

Discover a new world
of filming pleasure
with the

BOLEX 160

MACROZOOM



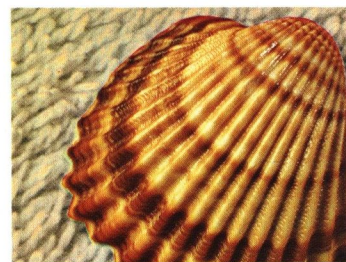
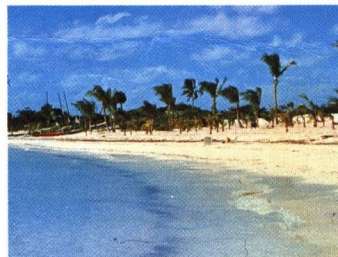
Unlimited picture possibilities!

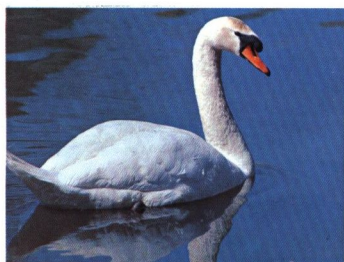
With the Bolex 160 Macrozoom, "difficult" shots just don't exist! Equipped with the most advanced technical features, this amazing camera offers new filming possibilities and provides more enjoyment in movie-making.

Macro-focusing, power-zooming, 3 filming speeds and

an exceptionally bright reflex viewfinder make everything magically easy to film: your children, their toys, the family pet, the distant landscape, or the tiny seashell on the beach. Focusing is continuous from infinity all the way down to one inch from the lens where the lens covers a field as small as $1" \times \frac{3}{4}"$ (24×18 mm), the size of an ordinary postage stamp! New horizons open up to the all-seeing eye of the Bolex 160 Macrozoom. Nothing is too small, or too close, to escape it. There's no "distance barrier", no need for optical accessories or difficult adjustments. Here's a camera that's usable in every

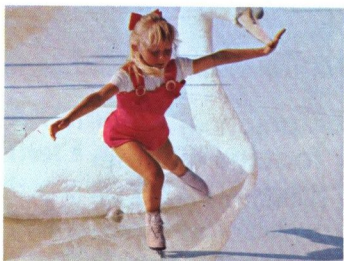
situation. A camera that offers more in magnification, provides better picture steadiness, and a more natural perspective. Film at distances, film close, film big, film small! Film whatever you like, automatically. The Bolex 160 Macrozoom is with you all the way.





Unusual effects

With a simple turn on the focusing knob, you can shift focus from foreground to background, thereby achieving a highly original and artistic transition. Use this focus effect to transform your girl friend into a lady-bird, your mother-in-law into a ferocious insect! The possibilities are endless! The Macrozoom lens performs fascinating tricks and gives your films a professional touch and

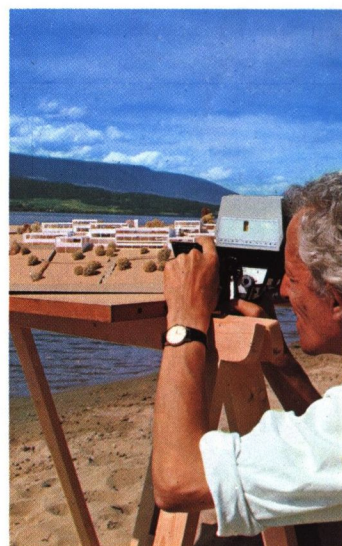


finish. The Multitrix, a mini-titrer supplied with the camera, makes it easy to achieve various other effects. Film a drawing, a section of a map, or a title drawn on a transparent acetate sheet or typed on a small piece of paper. They all can be incorporated into your film, right where they belong.

The Multitrix also comes with a holder for color transparencies so that you can film a 35 mm slide, automatically, even with a handheld camera. By filming titles, maps, folders, postcards, as you go along, there will be no need for subsequent time-consuming editing. The film is ready for projection when it comes back from processing. For complete, ready-made films, there's nothing like the Bolex 160 Macrozoom.

Professional applications

Its advanced optical and mechanical features make the 160 Macrozoom camera ideal for medical, industrial, educational, and research filming. Scientists, biologists, and analysts find it invaluable for studying details of laboratory processes, chemical or biological reactions. Advertising agencies, architects, artists, photographers, and sales executives use it to produce and test the efficiency of TV commercials, to show models, drawings and documents, in close-up. Its professional versatility is endless.



Design for convenience



A Camera that's appreciated because it's different

The modern, elegant shape of the 160 Macrozoom is not only for the sake of beauty but for maximum convenience while filming. Its design and perfect weight distribution provide complete freedom of movement, exceptional ease of carrying, and firm holding while filming, resulting in pleasant, steady pictures even when the lens is in the telephoto position.

Controls for easy filming

All controls on the 160 Macrozoom—speed selector, slow-motion button, power-zoom switch, manual focal length setting knob, and camera release—have been positioned for fast, fumble-free, fingertip convenience and efficiency. A knob replaces the inconvenient focusing ring on the lens of ordinary cameras.

A Prize-Winner for design

The bold new look of the 160 Macrozoom has earned the camera top awards in several design contests. Its pretty lines are not likely to be outdated soon.

The Bolex 160 Macrozoom is shown above in natural size.

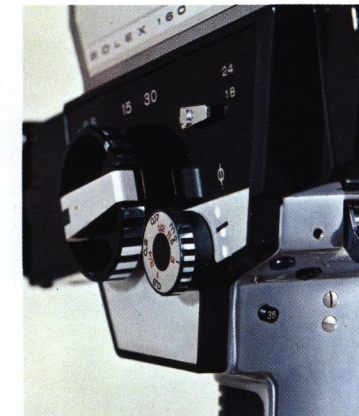
A Prize-Winner for convenience

The camera can be loaded with one hand, even when wearing gloves, because the magazine opens fully and cartridges are changed in a matter of seconds. Carried on the neckstrap like a small still camera, the 160 Macrozoom can be taken anywhere and is always at hand, ready for immediate action.



3 filming speeds

The filming speed can be changed from 18 to 24 f. p. s., or vice versa, while shooting. By simply pressing a button, also while shooting, the speed can be changed from 18 to 36, or from 24 to 36, f. p. s. for a definite slow-motion effect. In all cases the exposure meter immediately and automatically compensates for the difference in speed. For accelerated motion effects, a cable release, supplied with the camera, operates the built-in, single-frame mechanism.



Exceptional features

Outstandingly bright reflex viewfinder

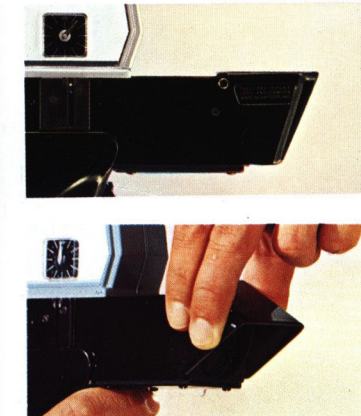
The new, patented coincident image rangefinder system of the 160 Macrozoom ensures extraordinary focusing accuracy. The view is sharp over the entire viewfinder field. The filmmaker can see the diaphragm opening, the battery condition, warning signals for insufficient light (red zone), excessive light



(yellow zone), when the film is fully exposed, or when there is no film in the camera, all while viewing through the camera's viewfinder.

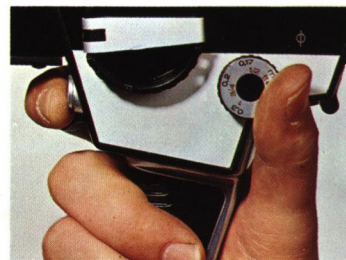
Multi-purpose shade

Folded upward, it is a protective lens shade. Folded forward, it makes an excellent lens cap which can never be lost or left at home. Lowered or raised gradually while filming, it can be used to produce a curtain fade-out or fade-in. For close filming it retracts, allowing the light to fall on the subject to be filmed.



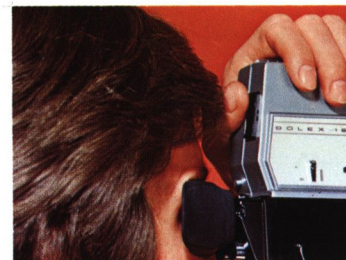
Thumb controlled focusing

One simple turn on the focusing knob is all one needs to do to film at distances from infinity down to one inch. This wide and wonderful focusing range lets you discover a new world of moviemaking and makes it possible to produce all kinds of exciting special effects (see page 5).



Power-Zoom

The power zoom control is conveniently located, for absolutely smooth zoom effects. In addition, a knob with lever can be used for rapid zooming or framing of the subject.



A practical 'footage' counter

The amount of film left in a cartridge can be seen instantly on the watchdial footage counter. One revolution of the needle corresponds to the filming time of one cartridge.

The dial is divided into 24 sections, each representing 8 seconds filming, the average length of a scene at 18 f. p. s.



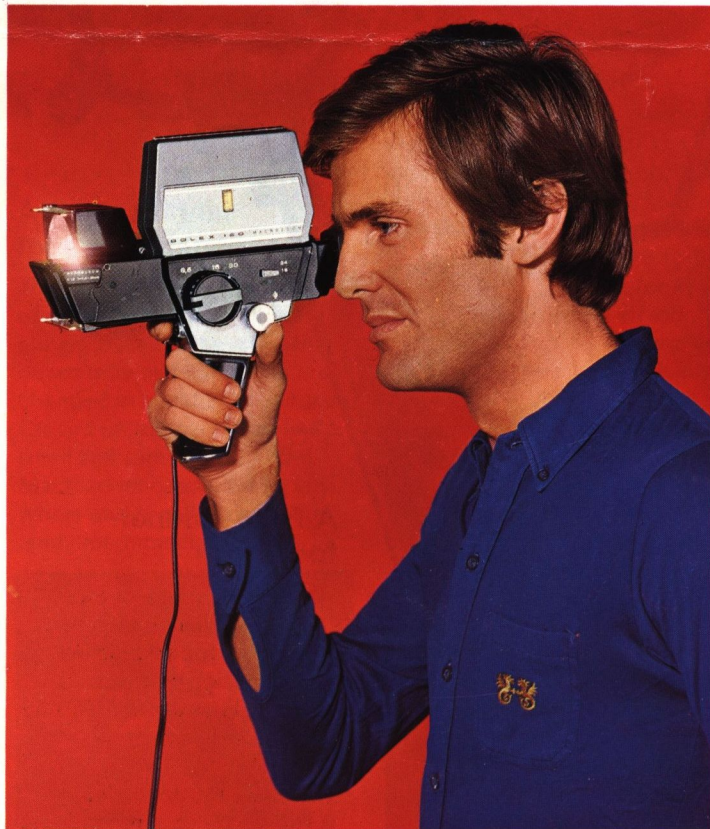
Reliable light meter

The light meter is shock-resistant. After assembly on the camera, it is exposed to rigorous tests, in order to ensure absolute reliability under all filming conditions.

A precision coupling to the different filming speeds eliminates possible differences in exposure when changing the speed. Light is measured through the lens by a photo resistance which measures an area equal to the filming field. Film sensitivity is automatically adjusted by notches in the film cartridge.

Indoor filming

The Bolex S2 Lite, fitted with a 650 W bulb, can be attached on the right side of the camera. It combines high light output with uniform distribution. Its switch automatically controls the position of the built-in conversion filter. A 13 ft cable permits its use in a large room. The light can also be used separately.



Quality and reliability

Bolex products are manufactured with the utmost care and subjected to rigorous tests. They therefore meet the highest standards of quality, precision, and reliability, for which the name of Bolex is world-renowned.

The international Bolex organization offers efficient after-sales service throughout the world. You can entrust your equipment to a Bolex distributor with complete confidence. He employs qualified technicians, usually trained in Switzerland.

Technical data

Bolex 8.5–30 mm f/1.9 Macro-zoom lens. Minimum filming distance: 1" (3 cm) from the lens (7" from film plane). Area coverage at minimum filming distance: 1" × ¾" (24 × 18 mm). Electric motor drive with indicator for correct film transport. Viewfinder image lifesize at 15 mm focal length. Eyepiece adjustable to individual eyesight (±5 diopters). Swivelling eyecup for right or left eye viewing, folds back for viewing with eyeglasses. Through-the-lens exposure meter powered by 2 Mallory PX-13 batteries, usable with all Super 8 films up to 200 ASA. Diaphragm can be locked, during or before filming, for manual setting or changing from automatic to manual while filming. 3 filming speeds and built-in single-frame release. Standard equipment supplied with the camera: Multitrix with slide mount, acetate sheets, grease pencil, filter mount and shoulder strap.

BOLEX
INTERNATIONAL S.A.
Sainte-Croix Switzerland

Paillard Incorporated
1900 Lower Road
Linden, N.J. 07036

Bolex Intl. S.A. reserves the right to modify, without prior notification, the design and features of the equipment described in this printed matter.