



PREMO

Lavonne Allen

PREMO
Cameras

1911

Manufactured by
Rochester Optical Division
Eastman Kodak Company
Rochester, N.Y.

FOR TOURISTS

Premo Cameras and Premo Film Packs may be obtained of practically every photographic dealer in this country. They may be had also in any part of the world in most photographic establishments, and always at the following agencies :

LONDON—Kodak, Limited, 57-61 Clerkenwell Road, E.C.; 60 Cheap-side, E. C.; 115 Oxford Street, W.; 171-173 Regent Street, W.; 59 Brompton Road, S. W.; 40 Strand, W. C.

LIVERPOOL—Kodak, Limited, 96 Bold Street.

BIRMINGHAM—Kodak, Limited, 3 Victoria Square.

NEWCASTLE—Kodak, Limited, 2 St. Nicholas Building.

DUBLIN—Kodak, Limited, 89 Grafton Street.

GLASGOW—Kodak, Limited, 72-74 Buchanan Street.

PARIS—Kodak, Société Anonyme Française, Avenue de l'Opera, 5; Place Vendôme, 4.

LYONS—Kodak, Société Anonyme Française, 26-28 Rue de la République.

LAUSANNE—Kodak Société Anonyme, 13 Avenue de Tribunal Federal.

NICE—Kodak, Société Anonyme Française, 34 Avenue de la Gare.

BERLIN—Kodak Gesellschaft m. b. H, Leipzigerstrasse, 114; Unter den Linden, 26.

BRUSSELS—Kodak, Limited, 36 Rue de l'Ecuyer; 59 Montagne de la Cour.

COPENHAGEN—Kodak Aktieselskab, Ostergade 1.

VIENNA—Kodak Gesellschaft, m. b. H., 29 Graben.

ST. PETERSBURG—Kodak, Limited, Bolschaia Konnuschenaia 19.

MOSCOW—Kodak, Limited, 15, 16 Petrovka.

MILAN—Kodak Societa Anonima, 34 Corso Vittorio Emanuele.

NAPLES—Kodak Societa Anonima, 288 Via Roma.

MELBOURNE—Australian Kodak, Limited, 284 Collins Street.

SYDNEY—Australian Kodak, Limited, 379 George Street.

BRISBANE—Australian Kodak, Limited, 78 Queen Street.

ADELAIDE—Australian Kodak, Limited, 37 Rundel Street.

WELLINGTON—Australian Kodak, Limited, 6 Mercer Street.

THE EASY WAY TO

SUCCESSFUL PHOTOGRAPHY

IT'S with a Premo and a film pack.

With a Premo every operation, from the loading of the camera to the development of the film or plate, is so easy that anyone, even without previous photographic experience, can make good pictures.

With every camera comes a book of directions. The merest novice has but to follow the simple instructions laid down to successfully operate any Premo, of which there are two distinct types. One loads with films exclusively. The other takes films or plates with equal facility.

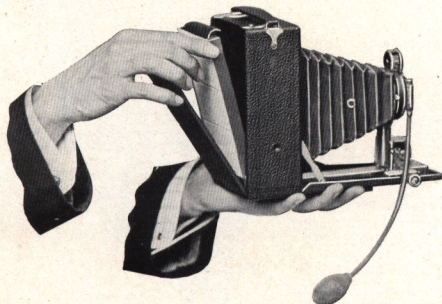


The Premo Film Pack

Film Premos and the Premo Film Pack

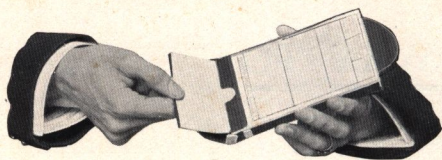
The purely Film Premos, described on pages 7 to 15, are for use exclusively with the Premo Film Pack, which being absolutely light-tight can be loaded and unloaded in broad daylight.

Just open back of camera—drop in film pack—close back—and the camera is loaded. This is by far the quickest and easiest method of loading any camera.



Loading is Easy

To prepare for the first exposure, simply pull out from the pack the paper tab marked "Safety Cover." Then to change each film for successive expo-



Remove one or more films for development at any time

removed in any light and a fresh one substituted. The entire operation of changing the twelve films can be done in as many seconds.

The easiest to load, the simplest to operate, the film pack has one other unique advantage—the fact that one or more films can be removed any time for tray or tank development.

You don't have to wait until the whole twelve films have been exposed, but whenever you wish, can take the pack to a dark room, open it at the bottom, take out the exposed film or films, close it up again and replace the pack for the remaining exposures. This operation can be repeated as often as desired until the pack is exhausted.

Tank Development

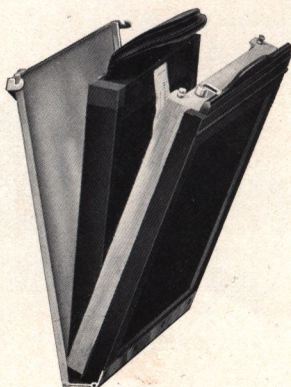
In development the beginner can be assured of as well developed Premo Film Pack negatives as the most experienced photographer. He needs no experience for it takes no skill. All he needs is a Premo Film Pack Tank. He can load the tank in two minutes and the tank automatically takes care of the development, delivering as well developed negatives from every pack put into it, as a skilled photographer could produce from the same pack.

Premo Plate Cameras and the Premo Film Pack Adapter

These cameras, designed primarily for plates, have been the leading plate cameras of the country for over twenty-five years.

And with the introduction of the Premo Film Pack it was found that a simple film pack holder or adapter, modeled upon the ordinary

asures, merely pull out successive tabs. Upon pulling out the twelfth tab the pack is rendered light-tight, so that it may be safely

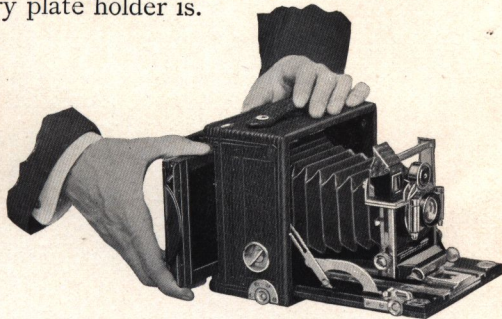


The Premo Film Pack Adapter

plate holder, would make it a simple matter to load any of these plate cameras with film packs. Pages 16 to 28.

The Premo Film Pack Adapter has the general size and appearance of a plate holder. But it has a hinged back which can be easily opened, the film pack dropped in place, back closed, and the adapter then loaded in the plate camera just as an ordinary plate holder is.

To make exposures the slide is withdrawn, the "safety cover" pulled out and the film pack operated for successive exposures just as in film cameras.



Then at any time the slide may be reinserted, the adapter removed and the subject sharply focused on the ground glass by precisely the same method you would follow in using glass plates.

Advantages of a Focusing Camera

In a focusing camera, as the ground glass is just the size of the negative and occupies exactly the same position when in use, the operator can actually see, before making the exposure, what the finished picture will contain.

He can move his lens back or forward until the picture appears absolutely sharp, he can determine just what location the various objects in the picture should take, for the best balanced picture, and he can see the exact size which every object will have in the finished result.

Ground glass focusing is an advantage which is often valuable in home portraiture, copying, architectural work, landscape photography, especially in composition—in fact in all branches of photography excepting instantaneous work.

Of course with a focusing Premo you do not have to use the ground glass, as each is fitted with a finder and focusing scale just like a purely film camera. But the point is that the ground glass is always there for your convenience when

you want it, and you can get it in Premo cameras that are as compact and simple to operate as purely film cameras.

Remember that films or plates can be used in these cameras with equal facility, and that this ground glass focusing advantage is instantly available with either.

Construction

The purchaser of a Premo secures an instrument which has over twenty-five years of camera-making experience and over fifty exclusive patents behind it.

Every camera is built to withstand hard and constant usage, while at the same time it is built upon correct lines, and finish and cabinet work are of the very highest order.

Above all, accurate tools, careful assembling and rigid inspection insure that every part of every Premo works easily and positively.

In this connection we want to point out especially two recent improvements in the Pony Premo series.

The first of these is the receding ground glass panel. This is constructed so that when pulled out to its limit it automatically catches and holds there, so that plate holder or film pack adapter can be easily inserted. Then slight pressure on the panel actuates the springs, which pulls it up tightly against holder or adapter, holding it firmly in place.

The second is the spring catch reversible back. In this construction the catches which hold in the back are fastened to the camera box by stout springs. To remove the back for reversing, it may be turned down on the catches to the point where it easily slips off, when the catches immediately spring back into place.

Go to the Dealer

The foregoing are the more important advantages of the Premo Cameras. Go to the dealer, who will gladly substantiate every one of them. Examine the goods yourself. You'll find that a Premo and a Film Pack mark the easy way to successful photography.

ROCHESTER OPTICAL DIVISION,
EASTMAN KODAK COMPANY, ROCHESTER, N. Y.

PREMO JUNIOR No. 0



THIS new addition to the Premo Junior line, while so simple that even a very young child can operate it, is not a toy, but a thoroughly practical, substantially built camera.

It makes time or snap shot exposures, loads in daylight and offers all the advantages and conveniences of the Premo Film Pack.

The size of the picture which it makes is very pleasing for amateur portraiture and general photography, and the negatives are of such quality that good size enlargements can be easily obtained from them.

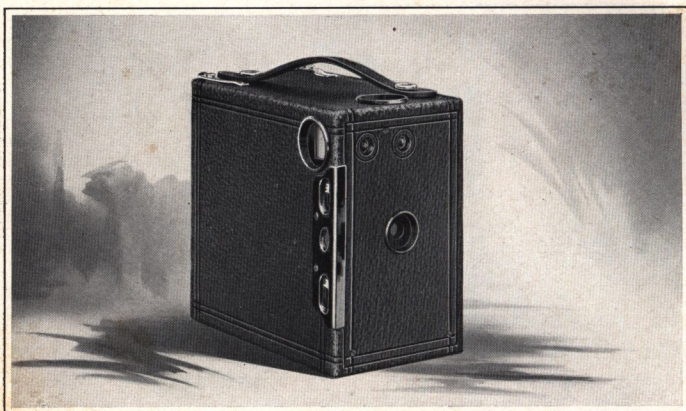
There is no more enjoyable nor educational recreation for the young people than photography, and this little instrument will provide any boy or girl with a practical, inexpensive, simple means of making good pictures.

PRICES AND SPECIFICATIONS

	1 3/4 x 2 3/8
Premo Jr. No. 0	\$1.50
Carrying Case60
Premo Film Pack, 12 exposures25

Capacity—12 films without reloading. *Size of Camera*—2 1/4 x 3 3/8 x 5 1/4 inches. *Weight*—7 ounces. *Shutter*—Automatic with diaphragm stops. *Lens*—Meniscus. *Finder*—Double, specially treated for brilliancy.

PREMO JRS. NOS 1, 1A, 3 & 4



THERE is nothing in the entire process of picture making with a Premo Junior which anybody cannot easily perform without previous knowledge of photography. No focusing, no estimating of distances is necessary.

Just set the shutter, locate and center the subject in the finder and press the shutter release. These cameras load in daylight, have automatic shutters for time or snap shot exposures, and are built to withstand hard usage.

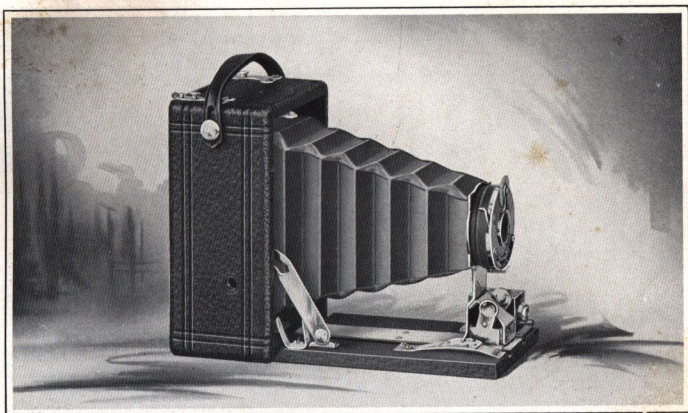
The Premo Juniors, of course, are not adapted for the wide range that the folding Premos are. But for all ordinary photography, such as home portraiture, snap shots in good light, average landscapes, they are very satisfactory.

PRICES AND SPECIFICATIONS

	No. 1 2¼ x 3¼	No. 1A 2½ x 4¼	No. 3 3¼ x 4¼	No. 4 4 x 5
Premo Junior	\$2.00	\$3.00	\$4.00	\$5.00
Carrying Case75	.85	1.10	1.25
Premo Film Pack (12 exposures)	.40	.50	.70	.90
Premo Portrait Attachment .	.50	.50	.50	.50

Capacity—12 exposures without reloading. *Size of Camera*—No. 1, 3¼ x 4½ x 5¾ in.; No. 1A, 3½ x 5½ x 5¾ in.; No. 3, 4 x 5½ x 5¾ in.; No. 4, 4¾ x 6¼ x 6½ in. *Weight*—No. 1, 12 ounces; No. 1A, 14 ounces; No. 3, 20 ounces; No. 4, 25 ounces. *Shutters*—Automatic with diaphragm stops. *Lens*—Single Achromatic. Two tripod sockets and two finders.

PREMOETTES Nos 1 & 1A



DIFFERING only in the size of the pictures which they make, these two little cameras have become wonderfully popular on account of their diminutive size, neat appearance and convenient operation.

They make splendid pictures—pictures which compare favorably with those made with the largest cameras, pictures of good size for snap shot work and amateur portraiture—of excellent quality for enlargement.

Premoettes have single lenses and Premoette automatic shutters working for time, bulb and instantaneous exposures.

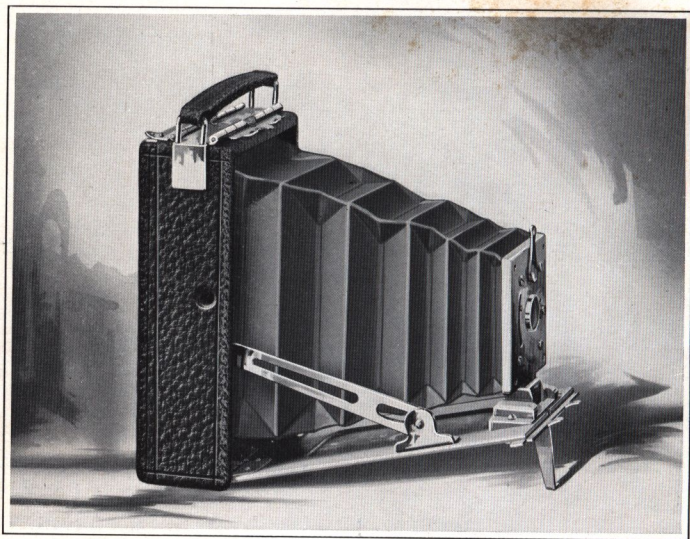
When fitted with Premo Portrait Attachment, these cameras make excellent bust pictures.

PRICES AND SPECIFICATIONS

	No. 1 2¼ x 3¼	No. 1A 2½ x 4¼
Premoette with Meniscus Lens and Premoette Shutter	\$5.00	\$6.00
Carrying Case75	.85
Premo Film Pack (12 exposures)40	.50
Premo Portrait Attachment50	.50

Capacity—12 film exposures. *Dimensions*—No 1, 1⅞ x 3⅜ x 4½ in.; No. 1A, 2½ x 3⅝ x 5½ in. *Weight*—No. 1, 11 ounces; No. 1A, 16 ounces. *Lens*—No. 1, Meniscus. No. 1A, Single Achromatic. *Shutter*—Premoette Automatic for time, bulb and instantaneous exposures. Two Tripod Sockets, Reversible Finder and Automatic Standard Clamp

PREMOETTE JR.



ONE of the most important advantages of the Premo Film Cameras has been their remarkably light weight and compact form, as compared with any other type of cameras. For instance, the regular Premoette, described on the preceding page, has hitherto been by far the smallest camera obtainable for $2\frac{1}{4} \times 3\frac{1}{4}$ pictures.

But in the Premoette Jr., we have even outdone our best previous efforts. You never saw such a diminutive, attractive little camera. You would hardly think it possible that so small a camera could make $2\frac{1}{4} \times 3\frac{1}{4}$ pictures.

The box of the camera is made entirely of aluminum, which not only makes for light weight and compactness, but strength as well.

The shutter is especially constructed with a view to saving all possible space, and the ordinary standard is dispensed with. When the camera is opened the front board can be instantly slipped into either of the two bed slots, which

PREMOETTE JR.

serve as the focusing scale, one for less than twenty-five and the other for over twenty-five feet.

The shutter works smoothly and positively for snap shot or time exposures and has four stop openings. The lens is the best single achromatic meniscus.

One of the special features of the Premoette Jr. is its direct view finder, a finder which hitherto has never been furnished on any but the highest priced cameras. This finder springs into place automatically, is brilliancy itself, and permits perfect composition.

Premoette Jr., of course, loads in daylight with the Premo Film Pack—which is sufficient evidence of its convenience and efficiency. It is excellent for home portraiture when fitted with the Premo Portrait Attachment.



The camera is covered with genuine grain leather, metal parts are nickered, and its neat appearance will excite the admiration of the most fastidious.

The small size and light weight of the Premoette Jr. make it an excellent camera for vacation and general tourist use. It can be carried in any pocket or in a lady's hand bag, unnoticed. The size of the picture which it actually makes is large enough for good, clear pictures, while larger ones can be had from any negative by simple process of enlargement.

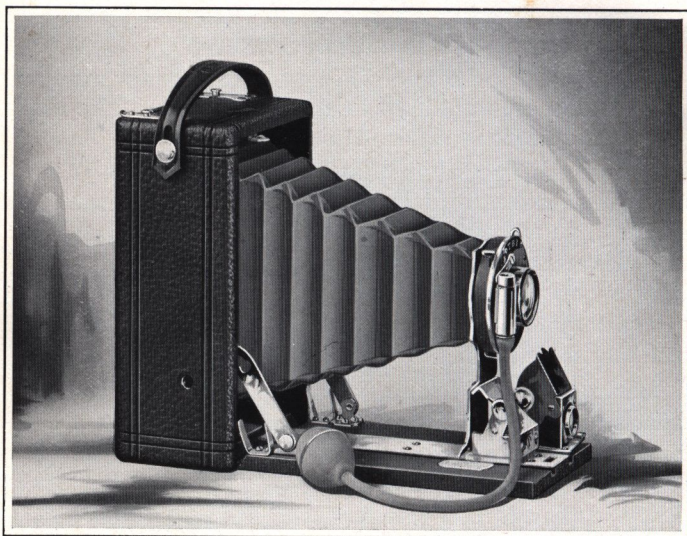
PRICES AND SPECIFICATIONS

Premoette Jr. with Achromatic Lens and Special Auto. Shutter	2¼ x 3¼	\$5.00
Carrying Case75
Premo Film Pack, 12 exposures40
Premo Portrait Attachment50

Capacity—12 film pack exposures without reloading. *Dimensions*—1¾ x 3¼ x 4½ in. *Weight*—10 ounces. *Lens*—Single Achromatic Meniscus. *Shutter*—Special Automatic for time and snap shot exposures. *Finder*—Direct view. *Tripod Socket*—One.



PREMOETTE SPECIAL



HERE'S one of the most popular models of our entire line, having been designed to meet the demand for a dainty, little instrument of the Premoette type but suitable for high grade lens and shutter equipments. It loads and unloads in daylight with that ease and convenience which characterize all Premos taking the Premo Film Pack.

To load, open back—drop in pack—close back and it's done. To expose merely pull out a black paper tab and press the bulb. It has the same advantages of light weight and compactness found in the regular Premoette, but instead of single lens and Premoette shutter, it is fitted with double rapid rectilinear lens and single valve automatic shutter.

And for those who desire the very finest equipment in so diminutive a camera, provision is made for fitting anastigmat lenses and high speed compound shutters, in which case the camera box is made just a trifle thicker. Such an equip-

PREMOETTE SPECIAL

ment permits an exceptionally wide latitude of work for so small a pocket camera, and it should be remembered that Premoette pictures can easily be enlarged up to almost any size. With this point in mind, many photographers prefer to use such a light, portable camera as the Premoette Special and then make enlargements from the particular negatives that they care about.

The finish and general equipment of the Premoette Special are fully in keeping with the high grade of work for which it is designed. The covering is of seal grain leather, the shutter and metal parts are highly nicked, and the bellows is of selected red leather.

An automatic clamp fastens the standard securely at any point of the bed where released. An accurate focusing scale is provided and a reversible, brilliant finder.

Like the regular Premoettes, these two models differ only in the size of pictures which they make. The films for the No. 1 may be developed in the No. 1 Premo Film Pack Tank while those for the No. 1A will be accommodated by the No. 2 Tank.

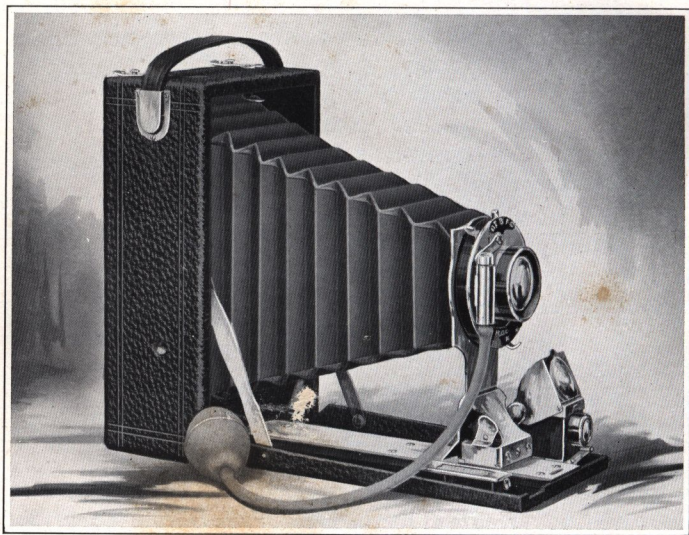
For home portraiture, either of these cameras, fitted with the Premo Portrait Attachment, makes an excellent outfit. The shape of the picture made by the 1A, $2\frac{1}{2} \times 4\frac{1}{4}$, is splendidly adapted for bust and full length portraits, for landscapes and marine views.

PRICES AND SPECIFICATIONS

	No. 1 $2\frac{3}{4} \times 3\frac{3}{4}$	No. 1A $2\frac{1}{2} \times 4\frac{1}{4}$
Premoette Special, R. R. Lens and S. V. Auto. Sh.	\$ 9.00	\$10.00
Premoette Special with Zeiss Kodak Anastigmat Lens <i>f</i> .6.3 and Compound Shutter	40.25	41.30
Premoette Special Carrying Case (sole leather) . .	1.00	1.25
Premo Film Pack (12 exposures)40	.50
Premo Portrait Attachment50	.50

Capacity—12 film exposures. *Dimensions*—No. 1 Special, $2\frac{3}{8} \times 3\frac{3}{8} \times 4\frac{3}{4}$ in.; No. 1A Special, $2\frac{1}{2} \times 3\frac{3}{8} \times 5\frac{1}{4}$ in. *Weight*—No. 1 Special, 11 ounces; No. 1A Special, 16 ounces. *Lens*—Rapid Rectilinear. *Shutter*—Single Valve Automatic (see page 36). *Finder*—Reversible, brilliant; No. 1A with hood, No. 1 without hood. Two tripod sockets and Automatic Standard Clamp.

F I L M P R E M O N o 1



THE most popular of all Premo Cameras, the sale of the Film Premo No. 1, in the half dozen years of its existence, has been enormous. And to one who desires a purely film camera, slight investigation will instantly reveal the reason for the great popularity of these models.

Take every important point which you look for in a film camera and apply them to Film Premo No. 1 in comparison with any other film camera, either at the dealer's or by catalogue specifications.

You will find that in size and weight Film Premos are much smaller and lighter than any other cameras for the most popular sizes of amateur pictures.

As regards optical equipment, these cameras are fitted with excellent rapid rectilinear lenses—each one carefully tested and amply efficient for all ordinary photographic purposes. Shutters are single valve automatic, working for time, bulb and instantaneous exposure by either bulb or

F I L M P R E M O N o 1

finger release. Lenses and shutters of this grade will be found on no other cameras at our price.

And then the whole process of taking pictures with a Film Premo is so simple that the merest beginner can make good pictures with one within ten minutes after getting the camera.

To load, just open back, drop in film pack—close back, and it is done. To expose, open camera, pull out a black paper, press the bulb, and the exposure is made. These two operations take even less time than it takes to tell of them.

After the exposures have been made the operator has the choice of developing his films either by the tray or the surer and more convenient tank system, for the Premo Film Pack Tank will develop every pack of film placed in it, as well as that pack could possibly be developed. (See description Premo Film Pack Tank, pages 38 and 39.)

The results which these cameras produce are excellent, and when fitted with the Premo Portrait Attachment, any of them will make good home portraits. The $3 \times 5\frac{1}{4}$ size is specially suitable for post card and artistic landscape composition.

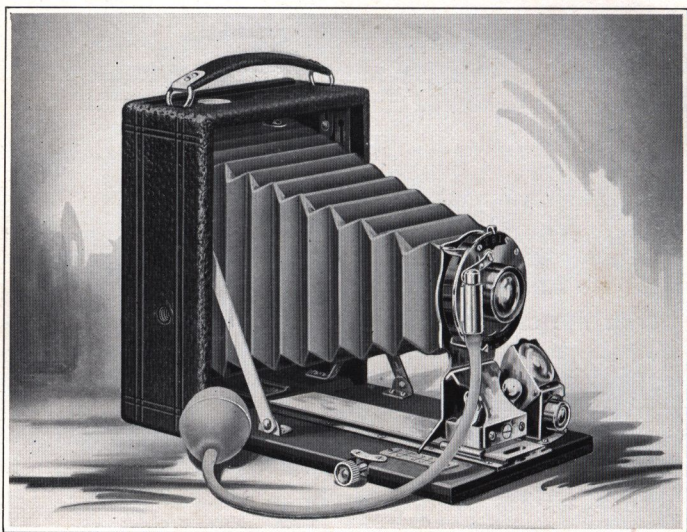
Film Premos No. 1 are very attractive in appearance; they are made of seasoned wood, with front and back panel of aluminum, covered with seal grain leather, and metal parts are beautifully nicked. Very substantially made, they will last a lifetime.

PRICES AND SPECIFICATIONS

Film Premo No. 1, with R. R. Lens and	$3\frac{1}{4} \times 4\frac{1}{4}$	$3 \times 5\frac{1}{4}$	4×5	5×7
Single Valve Auto. Shutter	\$10.00	\$12.50	\$12.50	\$16.00
Sole Leather Carrying Case	1.25	1.50	1.50	2.25
Premo Film Pack (12 exposures)70	.75	.90	1.60
Premo Portrait Attachment50	.50	.50	.50

Capacity—12 film exposures. *Box*—Mahogany. *Bed*—Aluminum. *Dimensions*— $3\frac{1}{4} \times 4\frac{1}{4}$, $2\frac{1}{8} \times 4 \times 5\frac{1}{2}$ in.; $3 \times 5\frac{1}{4}$, $2\frac{1}{4} \times 4 \times 6\frac{3}{4}$ in.; 4×5 , $2\frac{1}{4} \times 4\frac{3}{4} \times 6$ in.; 5×7 , $2\frac{1}{2} \times 5\frac{1}{4} \times 8\frac{1}{8}$ in. *Weight*— $3\frac{1}{4} \times 4\frac{1}{4}$, 18 ozs.; $3 \times 5\frac{1}{4}$, 20 ozs.; 4×5 , 20 ozs.; 5×7 , 46 ozs. *Lens*—Rapid Rectilinear. *Shutter*—Single Valve Automatic (see page 36). *Tripod Sockets*—Two. *Finder*—Reversible brilliant. Automatic Standard Clamp.

POCKET PREMOC



THE Pocket Premo C possesses two decided advantages. It can be loaded with plates by means of the ordinary double plate holder—or it can be just as easily loaded with films by means of the Premo Film Pack Adapter, as described on page 5.

Then it has a ground glass upon which each subject may be focused whether films or plates are used. The advantages in composition and accuracy of a focusing camera have already been explained on page 5. Now when it is considered that these important features are combined in the Pocket Premo C and that the camera itself is as light and compact as a purely film camera, the desirability of the instrument is at once apparent.

And the Pocket Premo C has still other excellent features. It has a rack and pinion attachment for convenient focusing when the ground glass is used. It has accurate focusing scale and reversible brilliant finder for use when the ground glass is not employed. An automatic standard clamp is

POCKET PREMO C

supplied, which holds the standard or lens support at any point where released. For use with tripod two tripod sockets are provided, the one for horizontal and the other for vertical pictures.

The shutter is single valve automatic, working with bulb or finger release for time, bulb or instantaneous exposures, and the lens is a rapid rectilinear of the finest quality obtainable—each one carefully tested before being sent out on the camera. It is supplied for two of the most popular sizes of amateur pictures and the $3 \times 5\frac{1}{4}$ size is especially suitable for post cards, full length and bust portraiture, and artistic landscape work.

The Premo Portrait Attachment or any of the lenses in the Premo Optical Outfit can be supplied with either size, and the ground glass focusing feature is especially valuable when these attachments are used. The camera is handsomely finished, covering is genuine leather and metal parts are highly nickeled.

With all these advantages the prices at which the cameras are supplied are very moderate and for one who wishes to get a very portable and reliable outfit which is suitable for all kinds of general amateur work, at a small outlay, this is an excellent value.

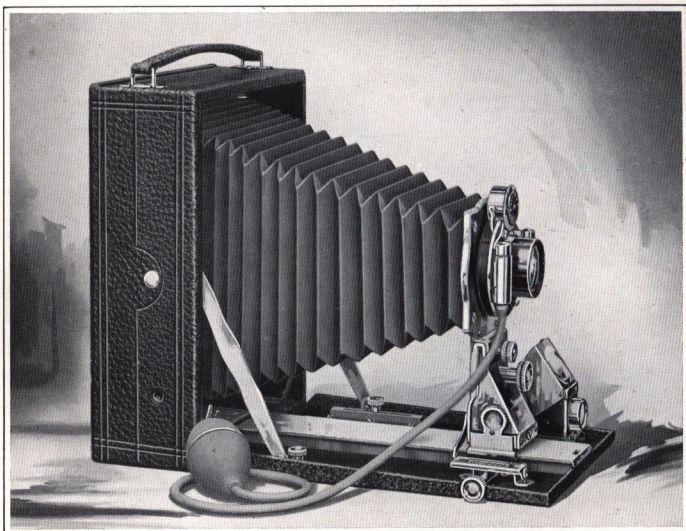
PRICES AND SPECIFICATIONS

Pocket Premo C with R. R. Lens and S. V. Auto.	$3\frac{3}{4} \times 4\frac{1}{4}$	$3 \times 5\frac{1}{4}$
Shutter and Plate Holder	\$12.00	\$15.00
Double Plate Holder80	1.00
Sole Leather Carrying Case	1.50	1.75
Premo Film Pack Adapter	1.00	1.50
Premo Film Pack (12 exposures)70	.75
Premo Portrait Attachment50	.50

NOTE—The $3 \times 5\frac{1}{4}$ size accommodates $3\frac{3}{4} \times 5\frac{1}{2}$ plate holders and dry plates.

Capacity—12 film or 2 plate exposures. *Box*—Mahogany. *Bed*—Mahogany with rack and pinion for focusing. *Finder*—Reversible, hooded brilliant. *Tripod Sockets*—Two. *Lens*—Rapid Rectilinear. *Shutter*—S. V. Automatic (see page 36). *Dimensions*— $3\frac{3}{4} \times 4\frac{1}{4}$, $2 \times 4 \times 5\frac{1}{4}$ in.; $3 \times 5\frac{1}{4}$, $2\frac{1}{4} \times 4\frac{1}{2} \times 6\frac{3}{4}$ in. *Weight*— $3\frac{3}{4} \times 4\frac{1}{4}$, 21 ounces; $3 \times 5\frac{1}{4}$, 27 ounces. Automatic Standard Clamp.

FILMPLATE PREMO



EQUIPPED to meet the most exacting requirements, as well as the average conditions which the amateur photographer will meet, this model is in many respects the most complete and satisfactory camera which can be had.

It is fitted with rising and sliding front and swing bed for use in increasing or decreasing foreground without distortion.

It is regularly supplied with the best lens obtainable outside of the anastigmats, fitted to double valve automatic shutter which works with bulb or finger release for time, bulb, instantaneous and retarded speed exposures.

With accurate focusing scale and brilliant finder, the Filmplate Premo is a splendid snap shot instrument. Whereas for particular work, the ground glass is instantly available for composition or focusing whether films or plates are being used. In a word, with all its other features it has those of the focusing camera, as described on page 5.

FILMPLATE PREMIO

And all these advantages are combined in a camera which can be carried around as easily as the most portable film camera, for the Filmplate Premo is fully as light and compact as the ordinary camera taking films exclusively.

The 3 x 5 1/4 size is especially suitable for post card work, for bust and full length portraiture and for artistic landscape compositions, while to those who like large size pictures the 5 x 7 is strongly recommended for its extreme lightness and compactness as compared with any other 5 x 7 camera on the market, designed exclusively for either plates or films.

We have given our best efforts to the general appearance of these splendid cameras. There is not a handsomer camera on the market. The box is made of thoroughly seasoned wood, front bed of aluminum, all covered with selected leather of beautiful seal grain. Particular attention is called to the special clamp supplied, which automatically fastens the standard to the bed wherever set, so there is no possibility of slipping forward or backward. All metal parts are highly nickered, which, in combination with the red bellows, gives the camera a strikingly rich appearance.

Fitted with Premo Portrait Attachment any Filmplate Premo, is excellent for home portraiture.

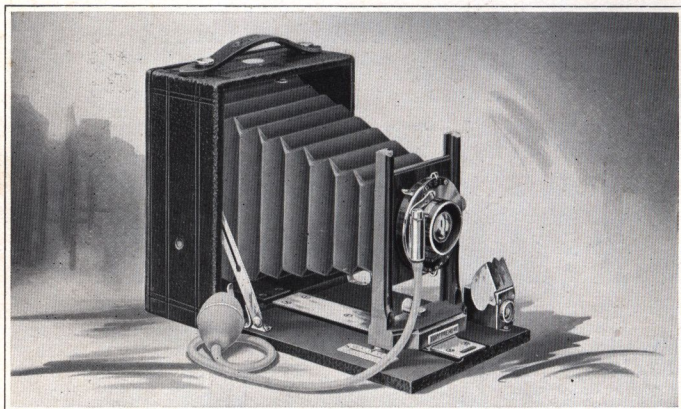
PRICES AND SPECIFICATIONS

Filmplate Premo with Planatograph Lens	3 1/4 x 4 1/4	3 x 5 1/4	4 x 5	5 x 7
and D. V. Auto. Shutter, Plate Holder				
and Film Pack Adapter	\$24.00	\$26.50	\$26.50	\$35.00
With Zeiss Kodak Anastigmat f.6.3 and				
D. V. Auto. Shutter	44.50	51.50	51.50	74.50
Ditto, with Compound Shutter	52.80	62.30	62.30	85.05
Sole Leather Carrying Case	1.75	2.00	2.00	2.50
Premo Film Pack (12 exposures)70	.75	.90	1.60
Premo Portrait Attachment50	.50	.50	.50

NOTE—The 3 x 5 1/4 size accommodates 3 1/4 x 5 1/2 plate holders and dry plates.

Capacity—12 film or 2 plate exposures. *Box*—Mahogany. *Bed*—Aluminum. Rack and pinion for fine focusing. *Front*—Rising and sliding. *Finder*—Reversible brilliant. *Tripod Sockets*—Two. *Lens*—Planatograph. *Shutter*—Double Valve Automatic (see page 36). *Dimensions*—3 1/4 x 4 1/4, 2 x 4 1/2 x 5 1/2 in.; 3 x 5 1/4, 2 x 4 1/2 x 6 1/2 in.; 4 x 5, 2 1/2 x 4 1/2 x 6 1/2 in.; 5 x 7, 2 1/2 x 6 x 8 3/4 in. *Weight*—3 1/4 x 4 1/4, 26 ozs.; 3 x 5 1/4, 30 ozs.; 4 x 5, 28 1/2 ozs.; 5 x 7, 48 ozs. Automatic Standard Clamp.

PONY PREMO No 1



A VERY moderate priced camera, taking films or plates with equal facility and offering the ground glass focusing advantage with either, as described on page 5.

While it does not have the special attachments of the higher priced Pony Premos, it is an excellent camera for the beginner or one who cares to make only a small outlay, for it will make good pictures under all ordinary conditions which the amateur will meet.

Pony Premo No. 1 is fitted with a fine R. R. lens and single valve shutter with both bulb and finger release.

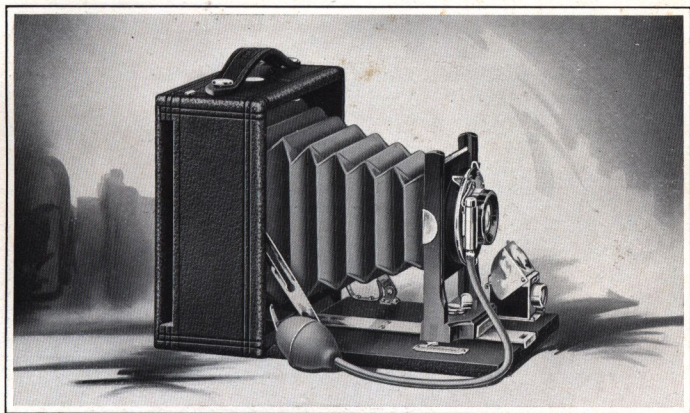
Covered with leather, metal parts nickerled.

PRICES AND SPECIFICATIONS

Pony Premo No. 1, with R. R. Lens and S. V. Auto. Shutter, Carrying Case and Plate Holder	4 x 5 \$12.00
Premo Film Pack Adapter	1.50
Premo Film Pack (12 exposures)90
Premo Portrait Attachment50

Capacity—12 film or 2 plate exposures. *Box*—Mahogany, leather covered. *Front*—Rising and falling. *Carrying Case*—Imitation leather with compartment for holders. *Finder*—Reversible, hooded brilliant. *Tripod Sockets*—Two. *Lens*—Rapid Rectilinear. *Shutter*—S. V. Automatic (see page 36). *Dimensions*—2½ x 5¼ x 6¼ in. *Weight*—24 ounces.

PONY PREMO No. 2



WITH the same type of lens and shutter, ground glass focusing feature and general characteristics of the preceding model, this camera has the additional advantage of our spring catch reversible back.

This back can be removed and reversed in an instant, thus making it a simple matter for the operator to make either horizontal or vertical exposures without changing the position of the camera proper.

The camera is substantially built, is covered with leather and metal parts are highly nickeled.

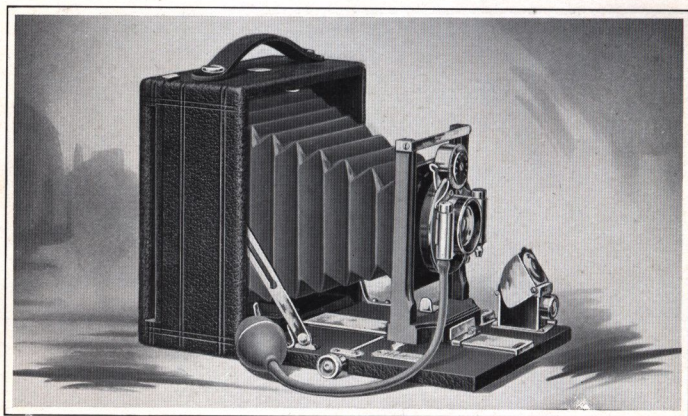
The Premo Portrait Attachment and the Premo Film Pack Adapter can be used with either size.

PRICES AND SPECIFICATIONS

Pony Premo No. 2, with R. R. Lens and S. V. Auto.	4 x 5	5 x 7
Shutter, Carrying Case and Plate Holder	\$14.00	\$18.50
Premo Film Pack Adapter	1.50	2.50
Premo Film Pack (12 exposures)90	1.60
Premo Portrait Attachment50	.50

Capacity—12 film or 2 plate exposures. *Box*—Mahogany, leather covered. *Back*—Spring catch, reversible. *Front*—Rising and falling. *Finder*—Hooded brilliant, reversible. *Tripod Socket*—One. *Lens*—Rapid Rectilinear. *Shutter*—Single Valve Automatic (see page 36). *Carrying Case*—Imitation leather with compartment for holders. *Dimensions*—4 x 5, 2½ x 6 x 6 in.; 5 x 7, 3¼ x 8¼ x 8¼ in. *Weight*—4 x 5, 28 ounces; 5 x 7, 50 ounces.

PONY PREMO No 3



PONY Premo No. 3 has all the advantages of its two predecessors and the additional ones of rack and pinion for easy, exact focusing, long bellows draw, and double valve automatic shutter which works for retarded speeds as well as the usual time, bulb and instantaneous exposures.

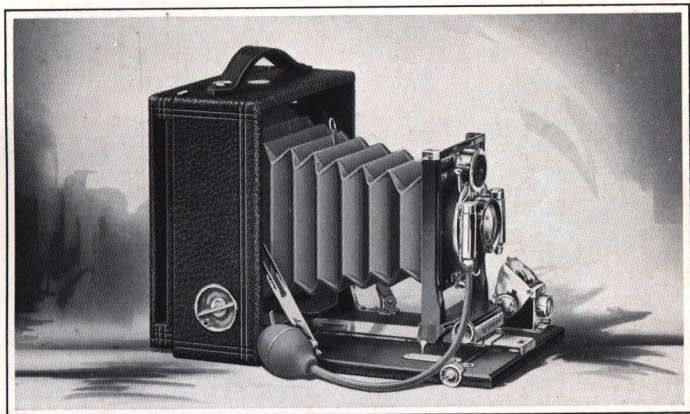
Pony Premo No. 3 may be loaded with films or plates and it offers the ground glass focusing feature with either. The instrument is handsomely finished, the shutter and all metal parts are highly nicked and the covering is grain leather. Wood parts of hand polished mahogany.

PRICES AND SPECIFICATIONS

Pony Premo No. 3, with R. R. Lens and D. V. Auto.	4x5	5x7
Shutter, Carrying Case and Plate Holder	\$20.00	\$26.00
Premo Film Pack Adapter	1.50	2.50
Premo Film Pack (12 exposures)90	1.60
Premo Portrait Attachment50	.50

Capacity—12 film or 2 plate exposures. *Box*—Mahogany, leather covered. *Bed*—Mahogany; rack and pinion attachment for fine focusing. *Back*—Spring catch, reversible. *Front*—Rising and falling. *Finder*—Hooded brilliant, reversible. *Tripod Socket*—One. *Lens*—Rapid Rectilinear. *Shutter*—Double Valve Automatic (see page 36). *Carrying Case*—Sole leather, with compartment for holders. *Dimensions*—4x5, 2½ x 6 x 6 in.; 5x7, 3¼ x 8¼ x 8¼ in. *Weight*—4x5, 33 ounces; 5x7, 56 ounces.

PONY PREMO No 4



A BEAUTIFULLY finished, thoroughly efficient outfit, suitable for expert or beginner. With all the good points of its three predecessors, it has additional equipment of self-centering swing back, automatic standard clamp and Planatograph lens.

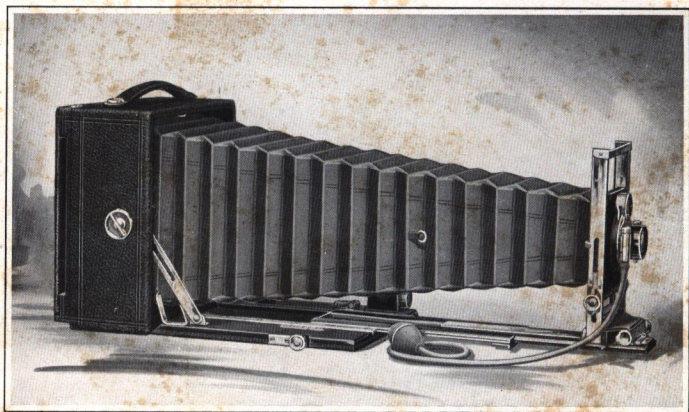
It has also sufficient bellows capacity to accommodate the single combination of the lens and is thus adapted for telephoto or long distance photography. Takes films or plates.

PRICES AND SPECIFICATIONS

Pony Premo No. 4, with Planatograph Lens and D. V.	4 x 5	5 x 7
Auto. Shutter, Carrying Case and Plate Holder	\$24.00	\$32.00
With Zeiss Kodak Lens <i>f</i> .6.3 and D. V. Auto. Shutter	49.00	71.50
Ditto, with Compound Shutter	59.80	82.05
Premo Film Pack Adapter	1.50	2.50
Premo Film Pack (12 exposures)90	1.60
Premo Portrait Attachment50	.50

Capacity—12 film or 2 plate exposures. *Box*—Mahogany, leather covered. *Bed*—Mahogany; rack and pinion for fine focusing. *Back*—Spring catch reversible. *Swing*—Vertical. *Front*—Rising and falling. *Finder*—Hooded, brilliant, reversible. *Tripod Socket*—One. *Lens*—Planatograph. *Shutter*—Double Valve Automatic (see page 36). *Carrying Case*—Sole leather with compartment for holders. *Bellows*—Red leather; draw 4 x 5, 11½ in.; 5 x 7, 15½ in. *Dimensions*—4 x 5, 2¾ x 6 x 6 in.; 5 x 7, 3¼ x 8¼ x 8¼ in. *Weight*—4 x 5, 36 ozs.; 5 x 7, 60 ozs. Automatic Standard Clamp.

PONY PREMO No. 6



ASIDE from the many special features which this camera offers to the advanced amateur, it meets a very large and a very important need in the business and technical world.

The Pony Premo No. 6 can be always depended upon for satisfactory results for all such purposes, not only because of its thorough equipment, but because it insures absolute accuracy of focus and composition in its ground glass focusing feature. And while lighter and more compact than any other reversible back camera of similar design, it takes films as well and as easily as plates. Thus, when special light weight and convenience are required, the camera may be loaded in daylight with the Premo Film Pack, and as a dozen films occupy about the same space as one double plate holder and are even lighter, the advantage of such an outfit in portability is readily appreciated.

The regular lens of this model—our Planatograph—is of such quality that either front or back combination may be used singly for telephoto work, and the bellows is of sufficient length to accommodate high power telephoto attachments of several magnifications. Furthermore, the instrument will be found efficient for copying, enlarging,

PONY PREMO No 6

scientific or other work necessitating long bellows draw. The standard is composed largely of metal, and the rising and falling front is actuated by pinion device, which is so constructed that it will lock firmly at any point, affording a safe support for the heaviest lenses. The lens board is firmly fastened to the standard automatically, but is easily removable at any time.

Although the bed is triple extension, it is actuated by but one pinion, which is also provided with locking device, permitting the extensions to be locked firmly at any point. The swing back is pivoted at the center, operated entirely from the outside and centers itself automatically.

The shutter and all metal parts are highly nicked. Wood is thoroughly seasoned, hand polished mahogany, and the covering is a genuine seal grain leather.

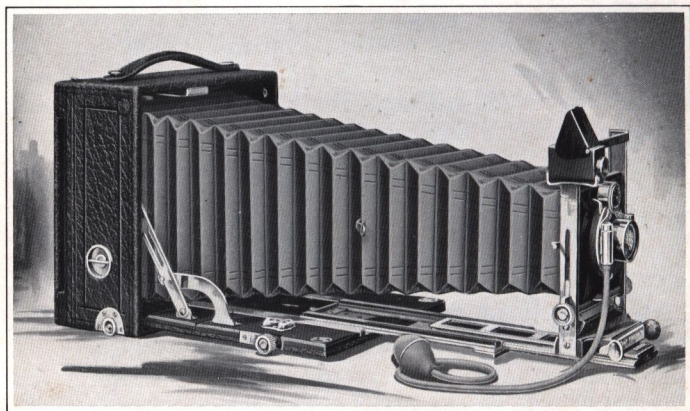
List price includes one plate holder and carrying case which is of the best sole leather, lined with red plush and having separate compartments for camera and plate holders.

PRICES AND SPECIFICATIONS

Pony Premo No. 6, with Planatograph Lens and	4 x 5	5 x 7	6½ x 8½
D. V. Auto. Shutter, Carrying Case and Plate			
Holder	\$37.00	\$47.00	\$62.00
With Zeiss Kodak Anastigmat f.6.3 and D. V.			
Auto. Shutter	62.00	86.50	111.50
Ditto, with Compound Shutter	72.80	97.05	124.20
With B. & L. Zeiss Protar VIIa, f.6.3 and D. V.			
Auto. Shutter	92.50	120.00	150.50
Ditto, with Compound Shutter	103.30	130.55	163.20
Premo Film Pack Adapter	1.50	2.50	
Premo Film Pack (12 exposures)90	1.60	

Capacity—12 film or 2 plate exposures. *Box*—Mahogany, leather covered. *Bed*—Triple extension; rack and pinion actuated. *Back*—Spring catch, reversible. *Swing*—Vertical. *Front*—Rising and falling; rack and pinion actuated. *Lens Board*—Removable; size, 4 x 5, 2½ x 2½ in.; 5 x 7, 3½ x 8½ in.; 6½ x 8½, 4½ x 4½ in. *Finder*—Hooded brilliant, reversible. *Tripod Sockets*—Two. *Case*—Sole leather, plush lined with compartment for holders. *Lens*—Planatograph. *Shutter*—Double Valve Automatic (see page 36). *Bellows*—Red leather; draw, 4 x 5, 14½ in.; 5 x 7, 19½ in.; 6½ x 8½, 24 in. *Dimensions*—4 x 5, 3½ x 6 x 6 in.; 5 x 7, 4 x 8¼ x 8¼ in.; 6½ x 8½, 5 x 10 x 10 in. *Weight*—4 x 5, 3¼ lbs.; 5 x 7, 5¼ lbs.; 6½ x 8½, 8½ lbs. Automatic Standard Clamp.

PONY PREMO No 7



THE finest hand camera manufactured, the complete equipment and superb finish of the Pony Premo No. 7 will at once appeal to him who wants the best outfit that money can buy.

Nothing has been forgotten or overlooked in its construction. Aside from every ordinary photographic use, it is suitable for copying, enlarging, telephotography, and provision is made for the use of lenses of the widest angle, so necessary in certain branches of photography.

For this latter purpose, it is necessary only to unclasp the two supplementary side arms, which drop the bed down on a hinge, removing it from the path of the shortest focus lens.

Then a short supplementary bed, carried conveniently at the top of the camera when not in use, is easily substituted for the regular bed, affording easy focusing facilities.

The movable extensions are constructed entirely of metal, are actuated by a single pinion and attached to the wooden bed by metal angle pieces, making the operation impervious to changing atmospheric conditions. The swing back is actuated by rack and pinion, with locking device,

PONY PREMOS No. 7

and the bellows is of such length that either of the Planatograph lens combinations can be used singly or high power telephoto attachments may be fitted.

The rising and falling front is operated by rack and pinion with locking device. The standard clamp is automatic. An accurate double spirit level is supplied; it has a hooded, reversible finder of the greatest brilliancy, and the back is our new spring catch reversible.

The finish and general workmanship of the instrument must be seen to be appreciated. The shutter and all metal parts are highly nicked and the covering is of the best leather, specially selected for its beautiful grain. The carrying case is of sole leather lined with the best red plush. Like all Pony Premos, it takes plates or the Premo Film Pack with all its conveniences.

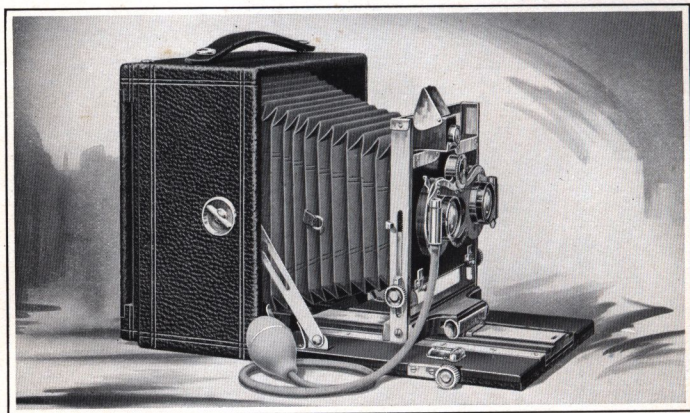
This camera can be fitted with focal plane shutter, and its adjustments and construction are such that it will make the most of every advantage of any anastigmat lens.

PRICES AND SPECIFICATIONS

Pony Premo No. 7, with Planatograph Lens	4 x 5	5 x 7	6½ x 8½
and D. V. Auto. Shutter, Carrying Case			
and Plate Holder	\$ 50.00	\$ 60.00	\$ 75.00
With Zeiss Kodak Anastigmat Lens f.6.3 and			
D. V. Auto. Shutter	75.00	99.50	124.50
Ditto, with Compound Shutter	85.80	110.05	137.20
With B. & L.-Zeiss Protar VIIa Lens f.6.3			
and D. V. Auto. Shutter	105.50	133.00	163.50
Ditto, with Compound Shutter	116.30	143.55	176.20
Premo Film Pack Adapter	1.50	2.50	
Premo Film Pack90	1.60	

Capacity—12 film or 2 plate exposures. *Box*—Mahogany, leather covered. *Bed*—Mahogany, with triple extension. *Back*—Spring catch, reversible. *Swing*—Vertical; rack and pinion actuated, with locking device. *Front*—Rising and falling; rack and pinion actuated, with locking device. *Lens Board*—Removable; size, 4 x 5, 2½ x 2½ in.; 5 x 7, 3½ x 3½ in.; 6½ x 8½, 4½ x 4½ in. *Finder*—Hooded brilliant, reversible. *Tripod Sockets*—Two. *Lens*—Planatograph. *Shutter*—Double Valve Automatic (see page 36). *Carrying Case*—Sole leather, plush lined, with compartment for holders. *Bellows*—Red leather; draw 4 x 5, 13¾ in.; 5 x 7, 19 in.; 6½ x 8½, 22 in. *Dimensions*—4 x 5, 3½ x 6¼ x 6¼ in.; 5 x 7, 4 x 8½ x 8½ in.; 6½ x 8½, 5 x 9¾ x 9¾ in. *Weight*—4 x 5, 3½ lbs.; 5 x 7, 5½ lbs.; 6½ x 8½, 8½ lbs. Automatic Standard Clamp.

STEREO PREMOS



FOR Stereo Cameras we have taken the three most complete Pony Premo models with all their various adjustments and added the best stereo automatic shutter obtainable and a carefully matched pair of Planatograph lenses to each. The result in each case is a stereo camera having all the special features of the corresponding single models and the assurance that any class of pictures obtainable with the regular camera can be as easily secured with the stereo. Furthermore, by using an extra lens board and purchasing a single lens and shutter, regular 5 x 7 pictures can be made, and films or plates may be used in either camera. List price includes camera with stereo shutter and Planatograph lenses, sole leather carrying case, double plate holder and one extra lens board.

PRICES AND SPECIFICATIONS

No. 4 Stereo Premo, complete	\$50.00
No. 6 Stereo Premo, complete	65.00
No. 7 Stereo Premo, complete	78.00

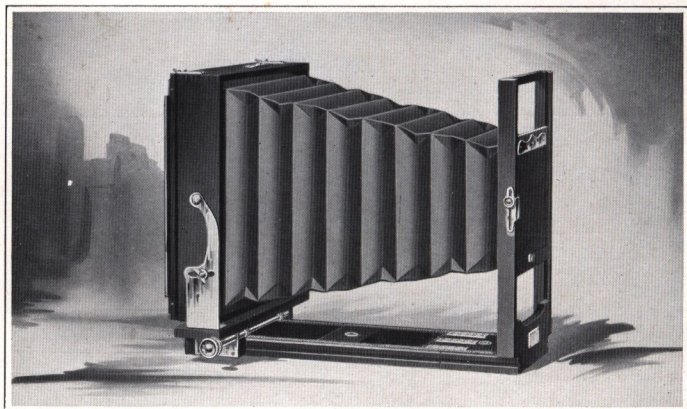
For prices on these cameras with Anastigmat Lenses, see page 29.

Specifications for these cameras are the same as those for the corresponding single models, excepting that they are made a trifle wider to accommodate the stereo equipment.

SPECIAL LENS AND SHUTTER EQUIPMENTS

STYLE OF CAMERA		Fitted with Zeiss Kodak Anastigmat, f.6.3 Lens				Fitted with B. & L.-Zeiss Tessar Lens, Series IIB, f.6.3				Fitted with B. & L.-Zeiss Protar Lens, Series VII A, f.6.3				Fitted with Cooke Lens, Series III, f.6.5			
		Compound Shutter		B. & L. Auto. Shutter		Compound Shutter		B. & L. Auto. Shutter		Compound Shutter		B. & L. Auto. Shutter		Compound Shutter		B. & L. Auto. Shutter	
		No.	Price	No.	Price	No.	Price	No.	Price	No.	Price	No.	Price	No.	Price	No.	Price
Filmplate Premo	3¼ x 4¼	2L.		2L.		4L.		4L.						3L.		3L.	
		0S.	\$ 52.80	1S.	\$ 44.50	0S.	\$ 65.30	1S.	\$ 57.00	0S.	\$ 65.80	1S.	\$ 57.50
	3 x 5¼	3L.		3L.		5L.		5L.						4L.		4L.	
		1S.	62.30	1S.	51.50	1S.	71.30	1S.	60.50	1S.	74.80	1S.	64.00
	4 x 5	3L.		3L.		5L.		5L.						4L.		4L.	
Pony Premo No. 4 . .	5 x 7	1S.	62.30	1S.	51.50	1S.	71.30	1S.	60.50	1S.	74.80	1S.	64.00
		5L.		5L.		5aL.		5aL.						6L.		6L.	
	4 x 5	2S.	85.05	2S.	74.50	2S.	95.55	2S.	85.00	2S.	98.05	2S.	87.50
		3L.		3L.		5L.		5L.		3L.		3L.		4L.		4L.	
	5 x 7	1S.	59.80	1S.	49.00	1S.	68.80	1S.	58.00	1S.	\$ 90.30	1S.	\$ 79.50	1S.	72.30	1S.	61.50
Pony Premo No. 6 . .	5 x 7	5L.		5L.		5aL.		5aL.		8L.		8L.		6L.		6L.	
		2S.	82.05	2S.	71.50	2S.	92.55	2S.	82.00	2S.	115.55	2S.	105.00	2S.	95.05	2S.	84.50
	4 x 5	3L.		3L.		5L.		5L.		3L.		3L.		4L.		4L.	
		1S.	72.80	1S.	62.00	1S.	81.80	1S.	71.00	1S.	103.30	1S.	92.50	1S.	85.30	1S.	74.50
	5 x 7	2S.	97.05	2S.	86.50	2S.	107.55	2S.	97.00	2S.	130.55	2S.	120.00	2S.	110.05	2S.	99.50
Pony Premo No. 7 . .	6½ x 8½	6L.		6L.		7L.		7L.		11L.		11L.		7L.		7L.	
		3S.	124.20	3S.	111.50	3S.	153.20	3S.	140.50	3S.	163.20	3S.	150.50	3S.	161.20	3S.	148.50
	4 x 5	3L.		3L.		5L.		5L.		3L.		3L.		4L.		4L.	
		1S.	85.80	1S.	75.00	1S.	94.80	1S.	84.00	1S.	116.30	1S.	105.50	1S.	98.30	1S.	87.50
	5 x 7	5L.		5L.		5aL.		5aL.		8L.		8L.		6L.		6L.	
Stereo Premo No. 4 . .	6½ x 8½	2S.	110.05	2S.	99.50	2S.	120.55	2S.	110.00	2S.	143.55	2S.	133.00	2S.	123.05	2S.	112.50
		6L.		6L.		7L.		7L.		11L.		11L.		7L.		7L.	
	2¼ x 3¼	3S.	137.20	3S.	124.50	3S.	166.20	3S.	153.50	3S.	176.20	3S.	163.50	3S.	174.20	3S.	161.50
		1L.				3L.											
	Premoeette No. 1 Special	2½ x 3¼	0S.	40.25			0S.	51.25		
Premoeette No. 1A Special	2½ x 4¼	2L.		2L.		4L.		4L.	
		0S.	41.30	1S.	35.50	0S.	53.80	1S.	48.00
Stereo Premo No. 4 . .	5 x 7	.	.	2L.	93.00	.	.	4L.	118.00	.	.	2L.	154.00	.	.	3L.	119.00
Stereo Premo No. 6	2L.	108.00	.	.	4L.	133.00	.	.	2L.	169.00	.	.	3L.	134.00
Stereo Premo No. 7	2L.	121.00	.	.	4L.	146.00	.	.	2L.	182.00	.	.	3L.	147.00

THE R. O. C. VIEW



THIS is the most efficient and reliable view camera ever offered to commercial photographers at such low prices. The front standard being firmly attached to the bed is extremely rigid and hence will accommodate the heaviest lenses. Focusing is from the back entirely, by rack and pinion adjustment. The camera has both vertical and horizontal swing, rising and falling front, and reversible back, equipped with supplementary light-trap.

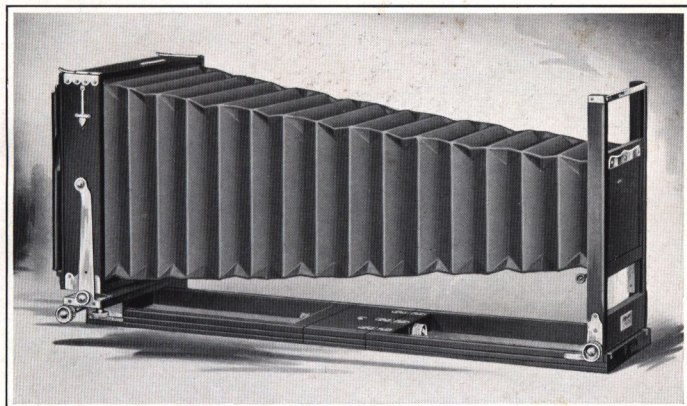
It is especially adapted for interior work as the back can be moved as close to the front as desired, so that lenses of extreme wide angle may be readily used. The outfit as listed comprises camera, one plate holder and carrying case.

PRICES AND SPECIFICATIONS

	5 x 7	6½ x 8½	8 x 10
R. O. C. View with Case and Holder . . .	\$15.00	\$16.00	\$17.00
Symmetrical Lens and D. V. Auto. Shut- ter (extra)	13.50	18.50	21.50
Extra Carrying Case	1.75	2.00	2.25

Bellows Draw—5 x 7, 14 in.; 6½ x 8½, 15½ in.; 8 x 10, 17 in. *Weight*—5 x 7, 4 lbs.; 6½ x 8½, 4¾ lbs.; 8 x 10, 5¾ lbs. *Size of Lens Board*—5 x 7, 3¾ x 3¾ in.; 6½ x 8½, 4¾ x 4¾ in.; 8 x 10, 5 x 5 in. *Carrying Case*—Square style canvas.

EMPIRE STATE VIEW



NO view camera has so withstood the test of time as has the Empire State. For over fifteen years it has been the favorite among commercial photographers for its peculiar adaptability for all such work.

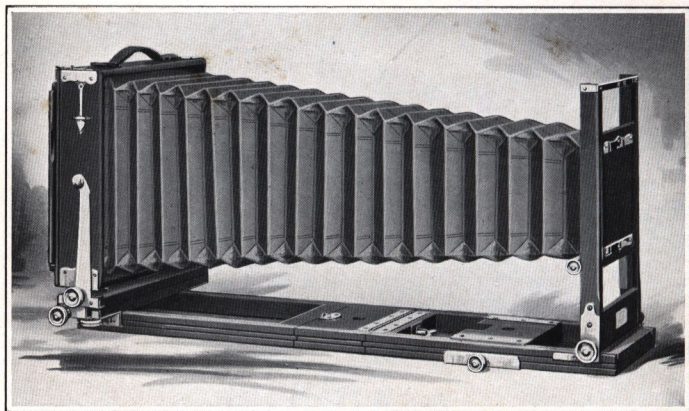
Has horizontal and vertical swings, reversible back with supplementary light-trap and rising and falling front, actuated by rack and pinion, and a very great focal capacity. Constructed of hand rubbed mahogany, with lacquered brass fittings and built to withstand rough usage. Price includes long style carrying case and one plate holder.

PRICES AND SPECIFICATIONS

	5 x 7	6½ x 8½	8 x 10	11 x 14	14 x 17
Empire State with Case and Holder	\$21.00	\$22.00	\$25.00	\$36.00	\$60.00
Symmetrical Lens and D. V. Auto.					
Shutter (extra)	13.50	18.50	21.50		
Extra Carrying Case	2.00	2.25	2.50	3.25	5.00

Bellows Draw—5 x 7, 22 in.; 6½ x 8½, 27 in.; 8 x 10, 30 in.; 11 x 14, 37 in.; 14 x 17, 48 in.
Weight—5 x 7, 6½ lbs.; 6½ x 8½, 7½ lbs.; 8 x 10, 9½ lbs.; 11 x 14, 16 lbs.; 14 x 17, 23¼ lbs.
Size of Lens Board—5 x 7, 3¾ x 3¾ in.; 6½ x 8½, 4¼ x 4¼ in.; 8 x 10, 5 x 5, in.; 11 x 14, 5¾ x 5¾ in.; 14 x 17, 7 x 7 in. *Carrying Case*—Long style canvas, with compartment for holders. Up to and including the 11 x 14 size, has both front and back focus; larger sizes are made with back focus only.

EMPIRE STATE N^o 2



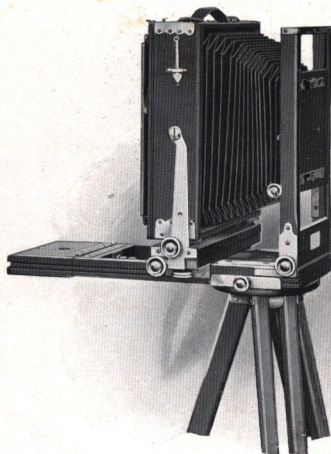
HAVING all the advantages of the original Empire State, this splendid instrument embodies additional features which make for even greater convenience and efficiency—features designed to meet every condition which may arise, so that the most particular photographer can wish for no convenience or adjustment which it does not possess. And these features are no mere talking points, but carefully thought out advantages which the photographer who has any use for a view camera will appreciate.

A noticeable improvement is the method of locking the extensions, not by the old-fashioned, long threaded screw, but by means of a specially constructed device which locks by merely being pushed in and given a quarter turn. The front extension is attached to the bed by a piano hinge, while the back extension, which is detachable, in addition to the above locking device is further strengthened by two clamp catches. These hold it absolutely rigid and at the same time permit it to be slipped on or off instantly.

A sliding tripod block is provided, which clamps securely at any point in the front extension, making it possible to always support the box directly above the tripod when short focus lenses are used. And no matter what focus of lens

EMPIRE STATE N^o 2

is used, the bellows is automatically kept up in place by a spring arrangement attached to the inside bellows frame. This requires no attention by the operator, as it folds automatically when the instrument is closed. This instrument is provided with both front and back focus, permitting the back to be racked up as close to the front as desired. The lens board is very large, will accommodate the heaviest lenses and is mounted in a strong, perfectly rigid standard. Back is reversible, with supplementary light-excluding device, and vertical and horizontal swings are provided; both actuated by rack and pinion. Rising and falling front is also actuated by rack and pinion, and the nuts which control all these adjustments are large and located on the right hand side of the camera; while the corresponding binding nuts are located on the left hand side, avoiding confusion between binding and operating parts. Empire State No. 2 is made of polished, kiln dried mahogany. Corners are dovetailed and reinforced by brass angle pieces.



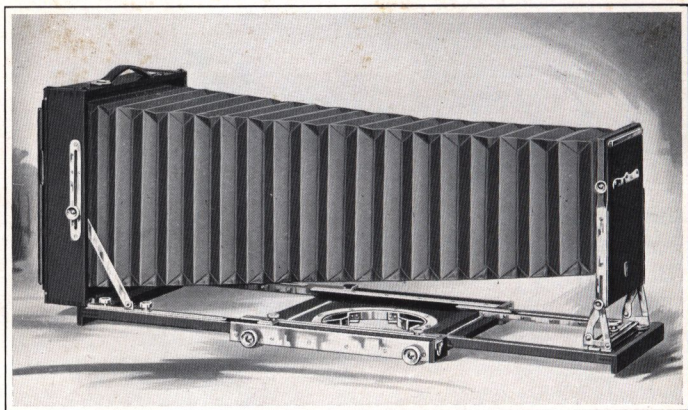
Tripod may be attached at any point

PRICES AND SPECIFICATIONS

	5 x 7	6½ x 8½	8 x 10
Empire State No. 2 with Case and Holder	\$23.00	\$25.00	\$28.00
Symmetrical Lens and D. V. Auto Shutter			
(extra)	13.50	18.50	21.50
Extra Carrying Case	2.00	2.25	2.50

Bellows Draw—5 x 7, 22 in.; 6½ x 8½, 27 in.; 8 x 10, 30 in. *Weight*—5 x 7, 7¼ lbs.; 6½ x 8½, 8¾ lbs.; 8 x 10, 11¼ lbs. *Size of Lens Board*—5 x 7, 3¾ x 3¾ in.; 6½ x 8½, 4¼ x 4¼ in.; 8 x 10, 5 x 5 in. *Carrying Case*—Canvas, long style, with compartment for holders.

PREMO VIEW CAMERA



THIS camera is made to combine a strikingly handsome appearance with the best possible equipment. It focuses from both front and rear, so that the extra long bellows may be readily used for telephoto or other work, or the body of the instrument brought forward, permitting the use of lenses of the widest angle, without "cutting off." It always balances on the tripod, has vertical and horizontal swing, and extreme rising front easily manipulated. Back is reversible; lens board removable and very large; standard support strong and rigid. The case is water proof with separate compartments for tripod, holders, extra lenses or other accessories. Price includes camera, tripod, plate holder and case.

PRICES AND SPECIFICATIONS

	6½ x 8½	8 x 10
Premo View Camera with Case and Holder and Combination Tripod	\$52.00	\$58.00
Symmetrical Lens and D. V. Auto. Shutter (extra)	18.50	21.50
Extra Carrying Case	4.00	5.00

Bellows Draw—6½ x 8½, 27 in.; 8 x 10, 30 in. *Weight*—6½ x 8½, 8 lbs.; 8 x 10, 9½ lbs. *Size of Lens Board*—6½ x 8½, 4 x 4 in.; 8 x 10, 4½ x 4½ in. *Carrying Case*—Trunk board with space for camera, holders, accessories and tripod.

PREMO LENSES

ALL Premo Cameras are regularly fitted with the best lenses obtainable, each in its particular grade. For special equipments see page 29.

We list below several lenses in barrel. Manufacturers' prices on any others will be supplied on demand.

ZEISS KODAK ANASTIGMAT LENS $f.6.3$

No.	Size of Plate Covered with Full Aperture	Equivalent Focus	Price
1	$2\frac{1}{4} \times 3\frac{1}{4}$	$4\frac{1}{2}$ inches	\$21.50
2	$3\frac{1}{4} \times 4\frac{1}{4}$	5 inches	22.00
3	4 x 5	$6\frac{1}{8}$ inches	27.00
5	5 x 7	$8\frac{1}{4}$ inches	40.00
6	$6\frac{1}{2} \times 8\frac{1}{2}$	10 inches	54.00

B. & L.-ZEISS PROTAR LENS—SERIES VIIA

No.	Size of Plate Covered with Full Aperture	Focus of Front Lens	Focus of Back Lens	Combined Focus	Speed	Price
2	$3\frac{1}{4} \times 4\frac{1}{4}$	$8\frac{3}{4}$ in.	$7\frac{3}{16}$ in.	$4\frac{1}{2}$ in.	$f: 7$	\$ 52.50
3	4 x 5	$11\frac{3}{16}$ in.	$7\frac{3}{16}$ in.	5 in.	$f: 7-7$	57.50
5	$4\frac{1}{4} \times 6\frac{1}{2}$	$11\frac{3}{16}$ in.	$8\frac{3}{4}$ in.	$5\frac{5}{8}$ in.	$f: 7$	61.50
8	5 x 7	$13\frac{3}{4}$ in.	$11\frac{3}{16}$ in.	7 in.	$f: 7$	73.50
9	5 x 8	$16\frac{1}{8}$ in.	$11\frac{3}{16}$ in.	$7\frac{1}{2}$ in.	$f: 7-7$	86.00
11	$6\frac{1}{2} \times 8\frac{1}{2}$	$16\frac{1}{8}$ in.	$13\frac{3}{4}$ in.	$8\frac{1}{2}$ in.	$f: 7$	93.00
12	$6\frac{1}{2} \times 8\frac{1}{2}$	$18\frac{7}{8}$ in.	$13\frac{3}{4}$ in.	$9\frac{1}{8}$ in.	$f: 7-7$	114.50
17	8 x 10	$23\frac{1}{8}$ in.	$18\frac{7}{8}$ in.	$11\frac{7}{8}$ in.	$f: 7$	169.00

B. & L.-ZEISS PROTAR LENS—SERIES V, $f:18$

The B. & L.-Zeiss Protar, Series V, is designed for extreme wide-angle work. This lens embraces a field of 110 degrees.

No.	Size	Equivalent Focus	Price
1	$4\frac{1}{4} \times 6\frac{1}{2}$	$3\frac{3}{8}$ inches	\$23.00
2	5 x 7	$4\frac{3}{8}$ inches	23.00
3	$6\frac{1}{2} \times 8\frac{1}{2}$	$5\frac{9}{16}$ inches	29.00
4	8 x 10	$7\frac{3}{16}$ inches	36.00

SYMMETRICAL WIDE-ANGLE LENS

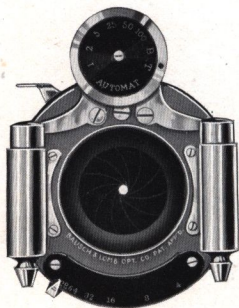
While not an anastigmat, this is an excellent wide-angle lens at a moderate price, having an angle of about 80 degrees.

No.	Size	Equivalent Focus	Price in Cells Only
1	4 x 5	$3\frac{1}{2}$ inches	\$ 5.00
2	5 x 7	5 inches	7.50
3	$6\frac{1}{2} \times 8\frac{1}{2}$	$6\frac{1}{2}$ inches	12.00
4	8 x 10	8 inches	15.00

SHUTTERS FOR PREMOS

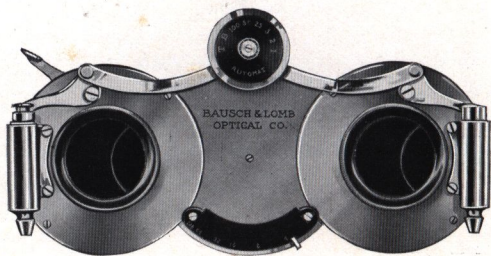
B. & L. AUTOMATIC SHUTTER

This shutter is automatic in action, working for time, bulb, instantaneous and retarded exposures without previous setting. The Automatic is operated by either bulb attachment or finger release. It is a very compact shutter and for exposures of 1, $\frac{1}{2}$, $\frac{1}{5}$, $\frac{1}{25}$, $\frac{1}{50}$, $\frac{1}{100}$ seconds, works with great accuracy. An Iris diaphragm is also supplied and the stops are graduated according to the universal system. This shutter is regularly supplied with the Filmplate Premos and Pony Premos Nos. 3, 4, 6 and 7.



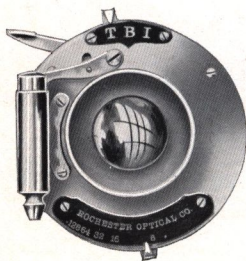
B. & L. STEREO AUTOMATIC SHUTTER

This shutter is in reality a double automatic, made up by a combination of two automatic shutters, both working in unison. Constructed so as to readily accommodate any desirable Stereo lens. Supplied with all Stereo Premos.



SINGLE VALVE AUTOMATIC SHUTTER

This is a first rate automatic shutter, and while it does not have the retarded speeds of the double valve shutter, it is fully as reliable for time, bulb and instantaneous exposures. Regularly supplied with Premoette Nos. 1 and 1A Special, Film Premo No. 1, Pony Premos Nos. 1 and 2, and Pocket Premo C.

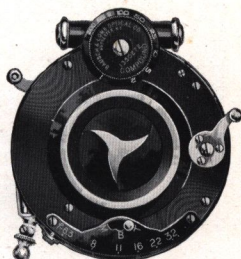


SHUTTERS FOR PREMOS

COMPOUND SHUTTER

The Compound Shutter is an automatic and setting shutter combined. Automatically, either time or bulb exposures may be made, while the shutter may be set for speeds up to $\frac{1}{150}$, $\frac{1}{200}$ or $\frac{1}{250}$ second according to size.

The shutter leaves are formed of segments opening in star shape, giving even illumination over the entire plate the instant the exposure is started, and an Iris diaphragm is provided. Supplied as a special equipment with Premo cameras that take anastigmat lenses.



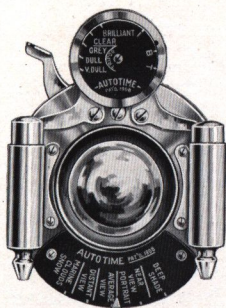
GRAFLEX FOCAL PLANE SHUTTER

To fit any Reversible Back Premo

Size	Price	Size	Price
4 x 5	\$22.00	6½ x 8½	\$27.00
5 x 7	24.00	8 x 10	31.00

KODAK AUTOTIME SCALE

The great majority of photographic failures are due to incorrect exposure—the uncertainty of just how shutter speed and diaphragm should be set for various subjects under various conditions of light.

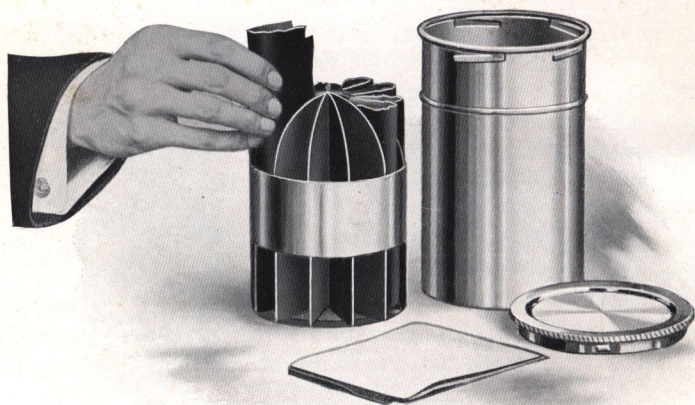


For outdoor subjects, there is no such uncertainty when a shutter is equipped with the Autotime Scale. Under every possible outdoor light condition, the scale shows at a glance just where to set diaphragm and speed lever to get a perfectly timed exposure.

The scale is easily attached to any of our shutters excepting the Premoette. Merely remove regular scales and replace them with the Autotime. Specify shutter when ordering.

Price, for S. V. and D. V. Auto Shutters	\$1.00
Price, for Compound Shutters	1.50

PREMO FILM PACK TANK



TANK Development is the greatest advance in photographic convenience of recent years. It is one of the most important discoveries which has ever been offered to the photographer. For tank development assures the veriest beginner that every pack of films placed in the tank, where the simple directions are implicitly followed, will come out developed as well or better than that pack could be developed in the tray by the most experienced photographer. It is simplicity itself. It requires no experience, no lengthy manipulation in a close dark-room. And we recommend the tank system to the most careful workers as being infinitely simpler than the older method and producing results superior to those which can be obtained by the most painstaking tray development.

The Premo Film Pack Tank consists of two pieces—a metal receiver or cage for the films, and a tank with cover for the developing fluid. The entire outfit is self contained and can be easily carried.

The cage is divided into twelve compartments—in the 5 x 7 size, six—each accommodating one film. As the film

PREMO FILM PACK TANK

is taken from the pack it is held between the thumb and fingers, slightly bent from top to bottom, and slipped into its respective compartment. When all the compartments are filled, the cage is placed in tank, which has been previously filled with developer, the top replaced and the films left to develop for a certain specified time. No further attention is necessary except to turn the tank, end for end, several times during the progress of development.

At the expiration of the full time, open the tank, take out the cage, remove films, place them in a tray of water for a moment, then transfer to the fixing bath. Development is completed. Rinse out cage and tank and set them aside.

The operation of removing films from the pack and loading the cage is done, of course, in a darkened room by the light of a ruby lamp. During the day any darkened closet will suffice, at night any dark room in which the shades are drawn will answer. To load the films in cage will take only two or three minutes, and as soon as the top is placed on tank it may be brought out into any light and left until development is completed.

If desired to develop less than a dozen films, one merely removes from his pack as many films as have been exposed, places them in a cage, and proceeds in the same manner as described above.

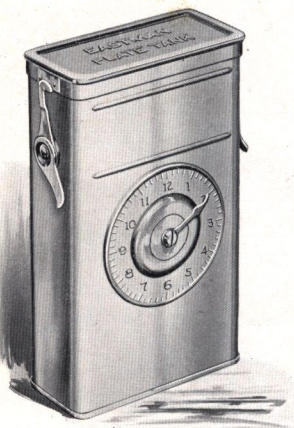
The cage of the No. 1 Tank is slightly different from that shown in the illustration, but the method of loading is the same and of course the results are just as dependable.

PRICES AND SPECIFICATIONS

Premo Film Pack Tank No. 1, for 12 2¼ x 3¼ films	\$1.25
Do, No. 2, for 12 2½ x 4¼, 3¼ x 4¼, 3 x 5¼ or 4 x 5 films	3.50
Do, No. 3, for 6 5 x 7 films	4.00
Premo Tank Developing Powders, in packages of 6, No. 120
Premo Tank Developing Powders, in packages of 6, No. 225
Premo Tank Developing Powders, in packages of 6, No. 335
Acid Fixing Powder, per 1 pound package25
Do, per ½ pound package15
Do, per ¼ pound package10

EASTMAN PLATE TANK

IN the Eastman Plate Tank, plates may be developed in the same manner and with the same assurance of excellent results as may films in the Premo Film Pack Tank. The theory of construction is precisely the same, with of course such differences as are necessary because of the physical difference between films and plates.



It consists of a metal solution cup, a cage for holding twelve or less plates and a loading block for loading plates into the cage. In the $3\frac{1}{4} \times 4\frac{1}{4}$, $3\frac{1}{4} \times 5\frac{1}{2}$ and 4×5 sizes, the cage of plates may be developed in a Premo Film Pack Tank, so that one using a Premo that takes films or plates and having a Premo Film Pack Tank needs only purchase the cage and loading

block of the plate tank for the tank development of his plates, an advantage in economy.

PRICES AND SPECIFICATIONS

Eastman Plate Tank, 4×5 or $3\frac{1}{4} \times 5\frac{1}{2}$, including Solution Cup, Plate Cage and Loading Block	\$ 3.50
Ditto, 5×7	4.50
Ditto, 8×10	10.00
Adjustable Kit for 4×5 or $3\frac{1}{4} \times 5\frac{1}{2}$ Tank, to take $3\frac{1}{4} \times 4\frac{1}{4}$ plates50
Kits for 5×7 Tank, to take $3\frac{1}{4} \times 5\frac{1}{2}$, $4\frac{1}{4} \times 6\frac{1}{2}$ or $4\frac{3}{4} \times 6\frac{1}{2}$ plates75
Extra Adjustable Kit for 8×10 plates	1.00
Plate Cage and Loading Block for 4×5 and $3\frac{1}{4} \times 5\frac{1}{2}$ plates (can be used in a 4×5 Premo Film Pack Tank)	1.75
Eastman Plate Tank Powders, for 4×5 tank, per package, $\frac{1}{2}$ dozen20
Ditto, for 5×7 tank, per package, $\frac{1}{2}$ dozen35
Ditto, for 8×10 tank, per package, $\frac{1}{2}$ dozen50
Kodak Acid Fixing Powder, per 1-pound package25

PREMO ACCESSORIES

THE PREMO PORTRAIT ATTACHMENT

This attachment simply fits on in front of the regular lens and in no way affects the operation of the camera, excepting to so change the focus as to permit working close to the subject, thereby giving good sized head and shoulder portraits with even the smallest Premo, while on the larger cameras bust portraits of any size desired, up to the limit of the film, may be secured. These attachments are supplied for all Premos, except Premo Jr. No. 0, up to and including the 5 x 7 size. Be sure to give exact designation of camera and shutter when ordering.



Price, any style \$.50

PREMO RAY SCREEN

By the use of this screen a more equal exposure can be obtained of sky, clouds and landscape, thus bringing out the detail of subject without losing cloud effect.

Size	Outside Diam.	Diam. of Lens	Price
No. 1	1½ in.	1¼ in.	\$.40
No. 2	2 in.	1¾ in.50
No. 2½	2⅞ in.	2 in.60
No. 3	3¼ in.	2⅞ in.75

PREMO OPTICAL OUTFIT

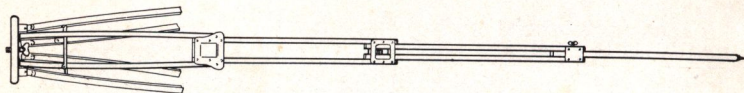
This outfit consists of a set of supplementary lenses, ray filter and duplicator. They slip over the regular lenses and are enclosed in a plush lined case, leather covered.

Outfit complete 4 x 5, for lenses 1⅝ in. diam. . . .	\$6.00
Outfit complete 5 x 7, for lenses 1⅝ in. diam. . . .	6.00
Enlarging and Copying Lens	1.25
Wide-Angle Lens	1.25
Tele-Photo Lens	1.25
Portrait Lens	1.25
Ray Filter	1.00
Duplicator40



PREMO ACCESSORIES

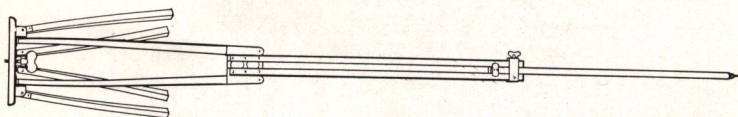
CROWN TRIPOD



Made in four sections. Very rigid.

Style	Folded	Extended	Weight	Price
No. 1 . . .	16 1/4 inches . . .	4 1/3 feet . . .	36 ozs. . .	\$5.50
No. 2 . . .	17 1/4 inches . . .	4 2/3 feet . . .	65 ozs. . .	6.00
No. 3 . . .	20 inches . . .	5 1/2 feet . . .	70 ozs. . .	7.50

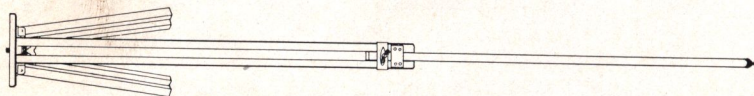
COMBINATION TRIPOD



This tripod is made on the sliding and folding principle. The wood parts are of ash and the finish is of the very best.

Style	Size of Camera	Weight	Price
No. 2 1/2 . . .	6 1/2 x 8 1/2 and smaller . . .	3 lbs. 2 ozs. . .	\$3.00
No. 3 . . .	8 x 10 and 10 x 12 . . .	4 lbs. 3 ozs. . .	3.50
No. 4 . . .	11 x 14 and 14 x 17 . . .	5 lbs.	4.50
No. 5 . . .	17 x 20 and 20 x 24 . . .	7 lbs.	6.00

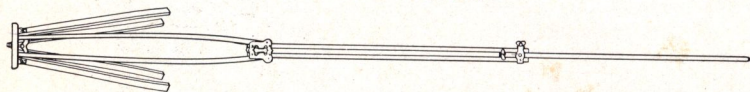
SLIDING TRIPOD



A perfectly rigid tripod for the heaviest cameras.

Style	Size of Camera	Weight	Price
No. 1 . . .	5 x 7 and smaller . . .	2 lbs.	\$2.00
No. 2 . . .	5 x 8 and 6 1/2 x 8 1/2 . . .	2 lbs. 8 ozs. . .	2.50
No. 3 . . .	8 x 10 and 10 x 12 . . .	4 lbs. 8 ozs. . .	3.00
No. 4 . . .	11 x 14 and 14 x 17 . . .	7 lbs. 3 ozs. . .	4.00

R. O. C. TRIPOD

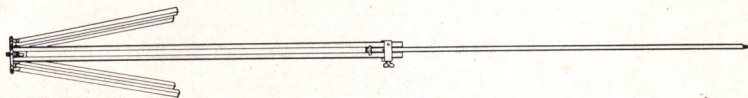


The R. O. C. Tripod is of the combination type and is for use with any camera up to and including the 5 x 7 size.

Weight, 32 ounces Length, 22 to 57 inches Price, \$1.70

PREMO ACCESSORIES

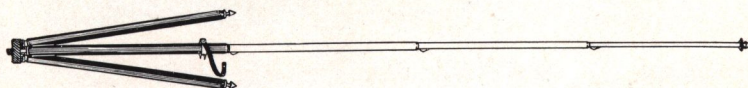
RAY SLIDING TRIPOD



For cameras up to and including the 5 x 7 size.

Weight, 16 ounces Length, 29 to 54 inches Price, 80 cents

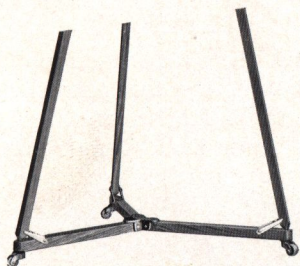
KODAK METAL TRIPOD



The strongest and most satisfactory of all metal tripods.

No. 1, 4 Sections Length, 15 to 48½ inches Price, \$2.50
 No. 2, 5 Sections Length, 13½ to 49½ inches Price, 3.25
 Leather Case, for either style, \$1.50

THE R. O. C. TRIPOD TRUCK



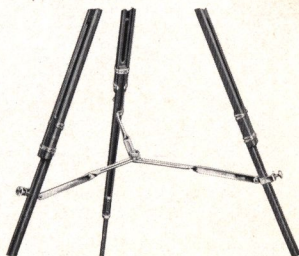
A most convenient accessory for all work where a tripod is employed indoors. Placed on this, the tripod legs are held firmly in position by quick acting spring catches, and there is no possibility of slipping or the tripod spikes marring floor or carpet. Folds compactly when not in use.

No. 1, for average tripods, \$1.00 No. 2, for very heavy tripods, \$1.25

EASTMAN TRIPOD BRACE

Easily attached to the three legs, the Eastman Tripod Brace will hold them always in the same position, even if the tripod be lifted. In other words, when this attachment is in place the tripod cannot collapse under any conditions. Made of metal.

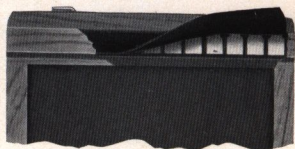
Price \$1.00



PREMO ACCESSORIES

PREMO PLATE HOLDER

Always the easiest of holders to load and unload, Premo holders are made absolutely light-tight by a fully patented light-lock. This device is shown in cut and is constructed of finely tempered, non-corrosive metal with independently operating spring fingers overlaid with a closely woven specially prepared fabric. The fingers bring this fabric into such close and immediate contact with the shutter cover that a slide can be inserted cornerwise without admitting light to the plate. Premo holders are always fitted with hard rubber slides.



$3\frac{1}{4} \times 4\frac{1}{4}$	\$1.00	5×7	\$1.25
$3\frac{1}{4} \times 5\frac{1}{2}$	1.00	$6\frac{1}{2} \times 8\frac{1}{2}$	1.75
4×5	1.00		

UNIVERSAL PLATE HOLDER

These holders up to and including the 8×10 size are of the same pattern as Premo holders excepting that they are heavier in construction and made to fit the Empire State and Premo View cameras. Sizes larger than 8×10 are made with bottom flap. Slides are pressboard unless otherwise specified.

5×7	\$1.00	11×14	\$4.00
$6\frac{1}{2} \times 8\frac{1}{2}$	1.10	14×17	5.00
8×10	1.25		

R. O. C. PLATE HOLDER

This holder is of good construction and is adapted for use in the R. O. C. View Camera only. It has pressboard slides.

5×7 . . .	\$1.00	$6\frac{1}{2} \times 8\frac{1}{2}$. . .	\$1.10	8×10 . . .	\$1.25
--------------------	--------	--	--------	---------------------	--------

HOLDER SLIDES

For any of our holders.

Size	Press-board	Price	Hard Rubber	Size	Press-board	Price	Hard Rubber
$3\frac{1}{4} \times 4\frac{1}{4}$. . .	\$.10 . . .		\$.20	$6\frac{1}{2} \times 8\frac{1}{2}$. . .	\$.25 . . .		\$.50
$3\frac{1}{4} \times 5\frac{1}{2}$1525	8×103565
4×51525	11×1450 . . .		
5×72035				

PREMO ACCESSORIES

HOLDER KITS

These are intended for holding small plates in large plate holders, and are made of well seasoned material.

Size Outside	Size of Opening for Plate		Price
4 x 5	3 1/4 x 4	3 1/4 x 4 1/4	\$.20
5 x 7	3 1/4 x 5 1/2	3 1/4 x 4 1/4 4 x 5 4 1/4 x 6 1/225
5 x 8	3 1/4 x 4 1/4	4 x 525
6 1/2 x 8 1/2	3 1/4 x 4 1/4 4 x 5 4 1/4 x 6 1/2 5 x 730
8 x 10	5 x 7 6 1/2 x 8 1/240
11 x 14	6 1/2 x 8 1/2 8 x 10 10 x 1250
14 x 17	10 x 12 11 x 1480

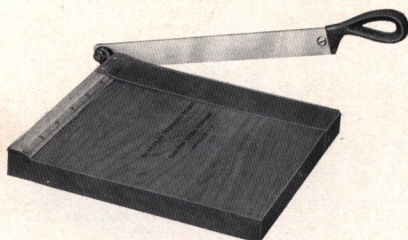
DARK ROOM LAMPS

The Kodak Candle Lamp. This lamp is well made, collapsible, of special tested ruby fabric, bound in metal frames.

No. 2 Kodak Dark Room Lamp. Oil burning, fitted with both orange and ruby glass.

Kodak Candle Lamp	\$.25
Extra Candles for same, per dozen30
No. 2 Kodak Dark Room Lamp	1.00

KODAK TRIMMING BOARD



A thoroughly reliable trimming board at a moderate price, constructed of hard wood with natural finish. The blade is of the best steel and a rule is fitted to the board.

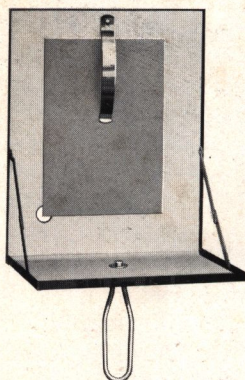
No. 1, 5 x 5 in.	\$.40
No. 2, 7 x 7 in.	.60
Transparent Trimming Gauge for either (extra)	.20

DEVELOPING TRAYS

Bulls-Eye Composition, 3 1/2 x 4 1/4	\$.12
Bulls-Eye Composition, 4 x 515
Bulls-Eye Composition, 5 x 725
Paper, 4 x 510
Paper, 5 x 715
Eastman Non-Breakable, 4 x 520
Eastman Non-Breakable, 5 x 725
Eastman Enameled, 4 3/8 x 5 3/825
Eastman Enameled, 5 1/4 x 7 3/850

PREMO ACCESSORIES

THE EASTMAN FLASH SHEET HOLDER



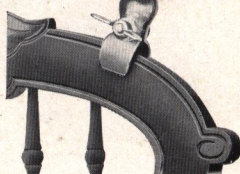
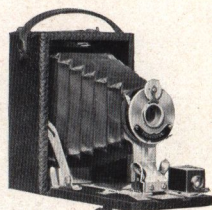
The safest and most convenient method of flash light photography is in the use of Eastman Flash Sheets with the Eastman Flash Sheet Holder.

The sheet is held in place by a spring finger, and the holder may be held always between the sheet and the operator, either with hand or on a tripod, a tripod socket being provided for this purpose. When all is ready the flash is set off by touching a match from the back to its lower corner, through a small aperture.

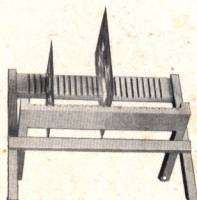
Eastman Flash Sheet Holder	\$1.00
Eastman Flash Sheets, No. 1, per pkg. $\frac{1}{2}$ doz. sheets, 3 x 4 .25	
Eastman Flash Sheets, No. 2, per pkg. $\frac{1}{2}$ doz. sheets, 4 x 5 .40	
Eastman Flash Sheets, No. 3, per pkg. $\frac{1}{2}$ doz. sheets, 5 x 7 .60	

THE UNIVERSAL CLAMP

The Universal Clamp is a small, convenient article which takes the place of a tripod, and which may be attached to any camera. It can be carried readily in the pocket, is very light, and may be attached to a chair, fence, the front board of an automobile, or other object which may be at hand. The clamp jaws are padded with felt. Price \$.75



PREMO NEGATIVE RACK



This rack accommodates negatives of all sizes. It folds flat when not in use.

No. 1, for 12 negatives	\$.20
No. 2, for 24 negatives25

PREMO ACCESSORIES

GLASS DRY PLATES

Seed, Standard or Stanley.

Size	Price per Dozen	Size	Price per Dozen
3 1/4 x 4 1/4	\$.45	5 x 7	\$1.10
3 1/4 x 5 1/265	5 x 8	1.25
4 x 565	6 1/2 x 8 1/2	1.65
4 1/4 x 6 1/290	8 x 10	2.40

VELOX PAPER

The very best developing paper for amateur use.

Size	SINGLE WEIGHT			DOUBLE WEIGHT		
	Doz.	1/2 Gross	Gross	Doz.	1/2 Gross	Gross
2 1/4 x 3 1/4	\$.15	\$.60	\$1.00	\$.20	\$.75	\$1.25
2 1/2 x 4 1/415	.70	1.25	.20	.90	1.55
3 1/4 x 4 1/415	.80	1.50	.20	1.00	1.90
3 1/4 x 5 1/215	.80	1.50	.20	1.00	1.90
4 x 525	1.10	2.00	.30	1.40	2.50
5 x 735	2.00	3.50	.45	2.50	4.40
Velox Post Cards20	1.10	2.00

CARD MOUNTS

BEVPLANE

Carbon Black and Scotch Gray

For Prints	Size Outside	Per 50	Per 100
2 1/4 x 3 1/4 . 4 x 5	\$.30	\$.60	
2 1/2 x 4 1/4 . 4 1/4 x 6	.40	.80	
3 1/4 x 4 1/4 . 5 x 6	.45	.85	
3 1/4 x 5 1/2 . 4 3/4 x 7	.45	.90	
4 x 5 . 5 1/2 x 6 1/2	.45	.90	
5 x 7 . 7 x 9	.85	1.70	

MARINE

London Brown and Ash Gray

For Prints	Size Outside	Per 50	Per 100
2 1/4 x 3 1/4 . 4 3/8 x 5 3/8	\$.50	\$.95	
2 1/2 x 4 1/4 . 4 1/2 x 6 1/4	.50	1.00	
3 1/4 x 4 1/4 . 5 1/8 x 6 1/8	.50	1.00	
3 1/4 x 5 1/2 . 5 3/8 x 8	.70	1.35	
4 x 5 . 6 x 7	.65	1.25	
5 x 7 . 8 x 10	1.05	2.10	

No orders accepted for less than fifty of one kind and size.

A. B. C. DEVELOPING AND PRINTING OUTFIT

For 4 x 5, 3 x 5 1/4,* or smaller pictures.

1 Kodak Candle Lamp, 25c.; 1 4x5 Printing Frame, 25c.; 1 4x5 Glass for Frame, 5c.; 1 4-ounce Graduate, 15c.; 1 Stirring Rod, 5c.; 4 Developing Trays, 40c.; 5 Tubes Eastman's Special Developer, 25c.; 1/2 pound Kodak Acid Fixing Powder, 15c.; 1 package Bromide Potassium, 5c.; 2 dozen Velox Paper, 50c.; 2 ounces Nepera Solution, for developing Velox, 10c.; Instruction Book, 10c. These articles if purchased separately would cost \$2.30. Price, complete, neatly packed, \$1.50.

*Specify when ordering this size.

MISCELLANEOUS

Bulbs and Tubes, No. 2 . . . \$.25	Printing Frame, $8\frac{1}{4} \times 4\frac{1}{4}$. . . \$.25
Bulbs and Tubes, No. 335	Printing Frame, $8\frac{1}{4} \times 5\frac{1}{2}$25
Focus Cloth, Rubber50	Printing Frame, 4×525
Photo Paste, 3 oz. tube15	Printing Frame, 5×735
Photo Paste, 5 oz. tube25	Reversible Backs:
Thermometer Stirring Rod . . .60	For View Cameras, 5×7 . . .7.50
R. O. C. Tumbler Graduates,	For View Cameras, $6\frac{1}{2} \times 8\frac{1}{2}$. . .9.00
moulded, 2 ounces10	For View Cameras, 8×10 . . .11.00
Do, 4 ounces15	For View Cameras, 11×14 . . .14.00
Do, 8 ounces20	Screws for Tripod Head:
Do, 16 ounces30	Nos. 1, 2 and 325
Print Roller, 2 x 6-inch rubber	Nos. 4 and 540
roller, nicked frame50	Screws for Tripod Leg:
Flexo Print Roller, 4-in. rubber	Nos. 1, 2 and 315
roller, black enameled frame .15	Nos. 4 and 525
Ground Glass Frames for View	Milled Head Screws for Cam-
Cameras:	eras:
5 x 775	$\frac{1}{2}$ inch and smaller15
$6\frac{1}{2} \times 8\frac{1}{2}$1.00	Larger than $\frac{1}{2}$ inch25
8 x 101.25	Shoulder Straps, Black:
Ground Glass:	$\frac{1}{2} \times 52$ inch with Snaps and
4 x 515	Buckles25
5 x 720	$\frac{5}{8} \times 52$ inch with Snaps and
$6\frac{1}{2} \times 8\frac{1}{2}$25	Buckles30
8 x 1030	$\frac{1}{2} \times 66$ inch, with Buckle . . .30
Lens Boards:	$\frac{5}{8} \times 74$ inch, with Buckle . . .35
For Premos, up to 5×7 . . .35	Tan Straps for View Cases,
For Premos, larger50	with Buckle. Specify style
For Stereo Cameras50	and size of camera when
For View Cameras, up to 8×10 .50	ordering:
For View Cameras, larger . .70	34, 40 and 44 inches25
Premo View Finder1.50	52, 60 and 66 inches30
Premo Spirit Level40	Tubing, per foot06

TERMS

Prices as listed in this catalogue are net, excepting to dealers.

When ordering, give shipping directions, whether by freight, express or otherwise. If not stated we use our discretion.

All orders for shipment C. O. D. must be accompanied with sufficient remittance to cover transportation both ways.

Mail orders must be accompanied with remittance for full amount of purchase, including postage, or we will ship by express.

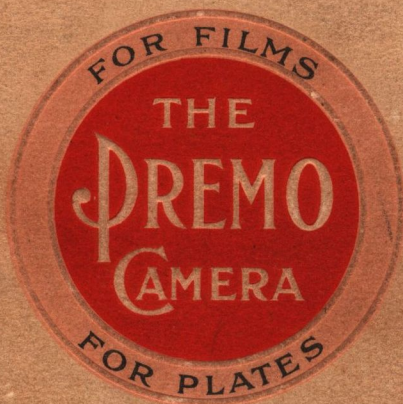
Under no circumstances are we responsible for loss of mail packages. We suggest for safety that all such packages be ordered registered.

All goods are carefully packed and we cannot be held responsible for any damage during transit.

Orders for special parts or for goods not listed in this catalogue will be filled on customer's responsibility only. Under no circumstances can we permit the return of such goods for credit.

All prices are F. O. B. at Rochester, N. Y.

ROCHESTER OPTICAL DIVISION,
EASTMAN KODAK CO. ROCHESTER, N. Y.



WILLIS-SHORES PHOTO SUPPLY CO.

9 WEST MARKET STREET

INDIANAPOLIS, IND.