

— Established 1756. —

THE BRITISH JOURNAL ALMANAC ADVERTISEMENTS.

1115



Photo by]

H. P. Hopkins, Esq.

“HAPPINESS”

always accompanies a *Voigtländer*

Celebrated Lenses and Cameras

Fully Illustrated Catalogue post free, on application.

Telephone—
6620 (2 lines) HOLBORN.



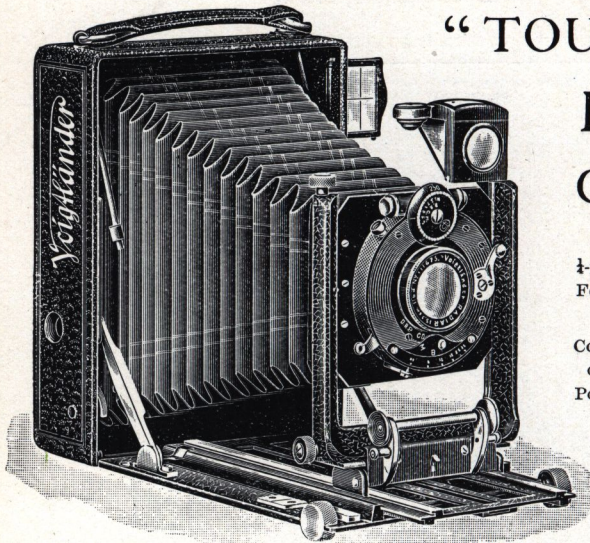
Telegrams—
BINOCLE, SMITH, LONDON.

Sole Agent for Great Britain & Colonies—F. G. PHILLIPS.

12, CHARTERHOUSE ST



HOLBORN CIRCUS, E. C.



“TOURIST”

Pocket Camera

$\frac{1}{2}$ -plate or 9×12 cm.
For Plates or Film
Pack.

Constructed entirely
of Light Metal.
Portable and Rigid.

Dimensions—
 $5\frac{1}{2} \times 4\frac{3}{8} \times 1\frac{1}{8}$ ins.
Weight— $1\frac{1}{2}$ lbs.

The “Tourist” Camera is an efficient pocket apparatus of superior construction, the double extension movement extends to 12 inches, enabling the back combination lens to be used alone. A special feature is the extreme rigidity of the front. The Apparatus is fitted with a direct vision Newton View Finder.

The Camera is made in three models.

- Model A.** Camera fitted with double extension and rising and cross front movement.
- Model B.** Similar to Model A, but with the advantage of an adjustable lowering baseboard, giving a swing back movement.
- Model C.** Similar to Model B, but is constructed so that the dark slide can be fitted into position without removing the focussing screen entirely from the back of Camera.

	Model A.	Model B.	Model C.
Camera complete with Voigtländer “Euryscope” Lens F 7.7, in Pronto Shutter, 3 Single Metal Dark Slides and Mechanical Release	£ s. d. 4 10 0	£ s. d. 4 19 0	—
Ditto, in Ibsco-Shutter	5 2 0	5 11 0	—
Ditto, with Voigtländer “Radiar” Double Anastigmat F 6.8, $5\frac{1}{8}$ in. focus, in Compound Shutter	6 5 0	6 14 0	7 6 0
Ditto, with Voigtländer Collinear III, F 6.8, $5\frac{1}{4}$ in. focus, in Compound Shutter	9 6 0	9 15 0	10 7 0
Ditto, with Voigtländer Collinear II, F 5.4, $5\frac{1}{8}$ in. focus, in Compound Shutter	10 15 0	—	—
Ditto, with Voigtländer “Heliar” F 4.5, 6 in. focus, in Compound Shutter	11 0 0	—	—

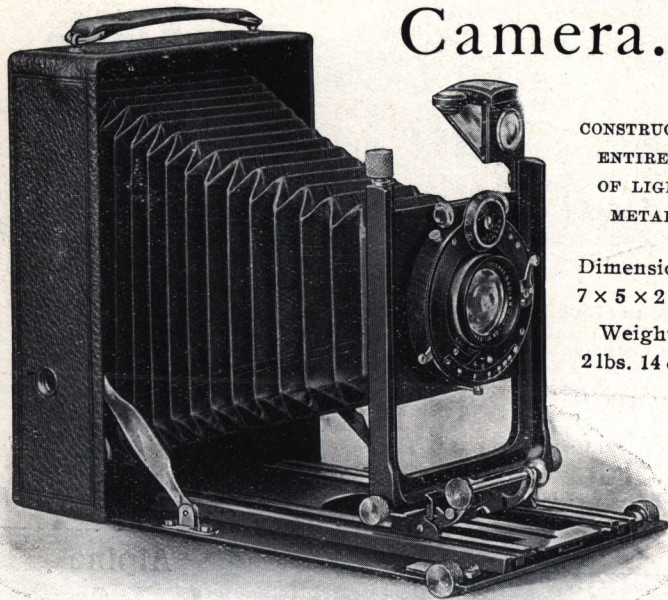
A Brilliant View Finder in addition to the Newton Finder can be supplied at an extra cost of 5/-.

Film Pack Holder, 7/6. Solid Leather Sling Case for Camera, 3 Slides, and Film Pack Holder, 13/-

Telescopic Tripod—Brass, 11/6; Aluminium, 18/-

Postcard size.
For Plates or Film Pack.
6 x 4 ins. 10 x 15 cm.

“Tourist” Camera.



CONSTRUCTED
ENTIRELY
OF LIGHT
METAL.

Dimensions :
7 x 5 x 2 ins.

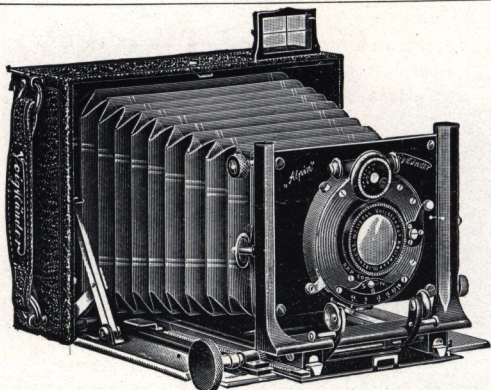
Weight :
2 lbs. 14 ozs.

The “Tourist” Camera, 6 x 4 in. 10 x 15 cm. size is similar to the $\frac{1}{2}$ -plate “Tourist” and can be thoroughly recommended where a compact Camera of the postcard size is required. It is supplied fitted with a Double Anastigmat “Radiar,” “Collinear” or “Heliar” Lens in a Compound Shutter, the double extension rackwork movement, which extends to 14 inches, enables the back combination of the “Radiar” or “Collinear” lens to be used alone as a long focus objective.

The Camera is fitted with a rackwork rising and cross front movement. The focussing screen has a folding hood cover, and the apparatus is provided with a Tripod bush for both horizontal and vertical positions.

	£	s.	d.
Camera complete with “Radiar” Double Anastigmat, F 6.8, 6½ ins. focus, in Compound Shutter, 3 Single Metal Dark Slides, and Mechanical Release ...	7	12	0
Ditto with “Collinear” III, F 6.8, 6½ ins. focus, in Compound Shutter ...	11	5	0
Ditto with “Collinear” II, F 5.4, 7 in. focus, in Compound Shutter ...	13	15	0
Ditto with “Heliar” F 4.5, 7½ in. focus, in Compound Shutter ...	14	0	0
Ditto with “Heliar” F 4.5, 8½ in. focus, in Compound Shutter ...	17	10	0
Film Pack Holder ...	12	0	0
Solid Leather Sling Case for Camera, 3 Slides and Film Pack Holder	16	0	0

Telescopic Tripod—Brass, 11/6; Aluminium, 18/-



The
Voigtländer
**Alpine
Camera,**

$\frac{1}{4}$ -Plate, or 9×12 cm.

6×4 ins.; 10×15 cm.
Postcard size.

For Plates or Film
Pack.

The perfect Hand Camera, suitable for use in all Climates.

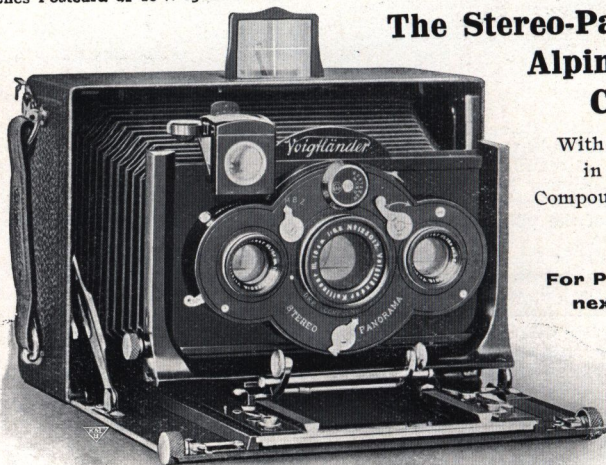
This Camera is entirely constructed of LIGHT METAL, and is fitted with a Voigtländer Lens, in Compound Shutter. It weighs 1 lb. 15 ozs. $\frac{1}{4}$ -Plate size, 3 lbs. 6 ozs. Postcard size.

In consequence of the very long triple extension, work can be done with the Back Combination of the Collinear Lens.

This Camera can be fitted with a telephoto attachment which has been especially designed to screw inside the camera. This form will be seen to be a great advantage for producing good telephoto work.

The Postcard size or 10×15 cm Camera can be supplied fitted for Panoramic or Stereoscopic work.

The measurements of the apparatus are $5\frac{1}{2} \times 4\frac{3}{8} \times 1\frac{1}{8}$ inches $\frac{1}{4}$ -Plate size, $7\frac{1}{2} \times 5 \times 2\frac{1}{8}$ inches Postcard or 10×15 cm size.



**The Stereo-Panoram
Alpine
Camera.**

With 3 Lenses
in Triple
Compound Shutter.



For Prices see
next page.

SEND FOR COMPLETE CATALOGUE TO

Voigtländer Alpine Camera.

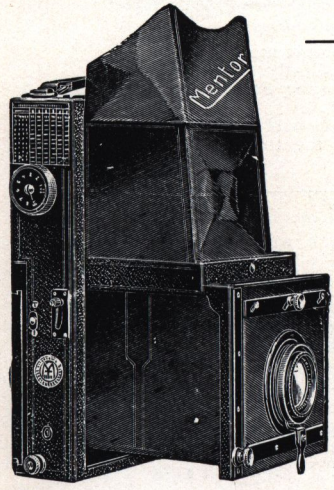
$\frac{1}{4}$ -Plate or 9 x 12 cm.

PRICES.

Postcard—6 x 4 ins.,
10 x 15 cm, or Stereoscopic.

	£	s.	d.
Camera with Collinear Lens Series III., 4 $\frac{3}{4}$ ins., in Compound Shutter, six Metal Dark Slides and Mechanical Release	11	10	0
Ditto, with Collinear III., 5 $\frac{1}{2}$ ins.	12	0	0
Ditto, with Dynar 4 $\frac{3}{4}$ ins.	10	5	0
Ditto, with Dynar 5 $\frac{3}{8}$ ins.	10	15	0
Telephoto Attachment, giving a magnification of 2 $\frac{1}{2}$ times	3	0	0
Film Pack Holder	7	6	
Contrast Filters, A, B, or Orange, each	17	6	
"Dukar" Autochrome Filter	12	0	
Solid Leather Sling Case for Alpine Camera and 6 Slides	13	6	

	£	s.	d.
Camera with Collinear Lens, Series III., 6 ins., in Compound Shutter, six Single Metal Dark Slides and Mechanical Release	15	5	0
Ditto, with 2 Collinear Lenses III., 4 ins. in Compound Shutter	19	5	0
Ditto, with 3 Objectives in Triple Compound Shutter	27	5	0
Telephoto Attachment for Collinear III., 6 ins., giving a magnification of 2 $\frac{1}{2}$ times	3	10	0
Film Pack Holder	12	0	
Contrast Filters, A, B, or Orange, each	17	6	
"Dukar" Autochrome Filter	15	0	
Contrast Filters for the Stereo Lenses per pair	1	15	0
"Dukar" Autochrome Filters for ditto per pair	1	4	0
Solid Leather Sling Case for Camera and 6 Slides	16	0	



New Folding Reflex Camera MENTOR

$\frac{1}{4}$ plate or 9 x 12 cm.

With "HELIAR" Lens F 4.5.

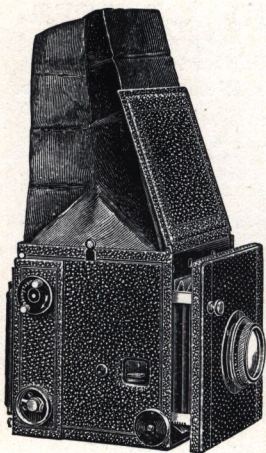
Dimensions 1 $\frac{3}{4}$ x 6 $\frac{1}{2}$ x 9 $\frac{1}{2}$ inches.

Weight 4 lbs. 5 ozs.

The body of Camera is made of wood covered with leather. Rising and sliding front, with lens in focussing mount, focal plane shutter which can be regulated from the outside.

	£	s.	d.
Price complete with 3 double dark slides and Heliar lens, 6 in. focus, in focussing mount	19	10	0
x $\frac{1}{4}$ Telephoto Attachment for same	3	10	0
Leather case for camera and 3 double slides	1	5	0
" " " " 6 slides	1	10	0

F. G. PHILLIPS, Sole Agent for Great Britain and Colonies.



Voigtländer

Metal Heliar-Reflex Camera "VIDA"

with Heliar Lens, F 4.5. $\frac{1}{2}$ -Plate or 9 x 12 cm.

The "Vida" is the most perfect of all Reflex Cameras, comprising

Efficiency, Compactness, and Durability.

It is of superior construction, and is fitted with a Rack and Pinion Movement working on all the four corners of the front, ensuring rigidity when extended. The Mirror is of Optically Worked Glass, silvered on the surface, and coated with a colourless preparation for preservation. The image reflected is therefore identical with that obtained upon the plate. This arrangement permits the photographer to observe the image up to the moment of exposure. The Camera is fitted with a Focal Plane Shutter, giving time and instantaneous exposures up to 1/1000th of a second; and is guaranteed to work without vibration. The Camera is also fitted with a reversible back.

It has the following advantages—

1. The Camera is constructed entirely of light metal.
2. The focussing hood erects itself automatically.
3. The Apparatus is fitted with a Self-Capping Focal Plane Shutter, which is released by gentle pressure.
4. The Mirror and Shutter are set simultaneously.
5. An Extension Adapter can be fitted to the front for using lenses up to 14 inches focus.

PRICES.

	£	s.	d.		Code Word.
Camera with 3 Double Dark Slides, Solid Form and Heliar Lens, $7\frac{1}{2}$ -in., F 4.5.	21	5	0		Festvida
Ditto, with 3 Double Dark Slides, Book Form	21	15	0		Buchvida
Ditto, with 3 Double Dark Slides, fitted with extractable Ebonite Shutters	21	15	0		Guvida
Ditto, without slides but with Magazine for 12 Plates	22	7	0		Wexvida
Telephoto Attachment giving a fixed magnification of $2\frac{1}{2}$ times	4	5	0		Vidatele
Film Pack Holder		12	0		Kleinpack
Adapter with Focussing Screen for using Single Metal Dark Slides	1	5	0		Vidadap
Single Metal Dark Slide		1	3		Alpinkas
Extension Adapter for using long Focus Lenses	3	0	0		Vidansatz
Solid Leather Sling Case for Camera and 3 Double Dark Slides	1	10	0		Vidatasch
Ditto for Camera and 6 Double Dark Slides	1	15	0		Vigrotasch

SEND FOR COMPLETE CATALOGUE TO

Voigtländer

HELIAR REFLEX CAMERA.

WOOD CONSTRUCTION.



This Camera is of superior workmanship, and is fitted with a rack and pinion movement, working on all the four corners of front, ensuring rigidity when extended. The Mirror is of Optically Worked Glass, silvered on the surface, and coated with a colourless preparation for preservation. The image reflected is therefore identical with that obtained upon the plate. This arrangement permits the photographer to observe the image up to the moment of exposure. The Camera is fitted with a self capping Focal Plane Shutter, giving time and instantaneous exposures to 1/1000th of a second; and is guaranteed to work without vibration. It is also fitted with a reversible back for taking horizontal or vertical pictures.

PRICES.

Size of Plate.	Dimensions of Camera.	Lens.	Camera with 3 Double Dark Slides with Vulcanite Shutters. Code Word.	Camera with Magazine for 12 Plates. Code Word.
2½ × 3½ ins. or 6½ × 9 cm.	5¼ × 5¼ × 6 ins.	Heliar 5¾ ins. F 4.5 Ditto with Telephoto attachment	£17 5 0 Kladrub £20 5 0 Kladina	£17 17 0 Sexwek £20 17 0 Sextespigl
6 × 4 ins. or 10 × 15 cm.	8¾ × 8 × 8½ ins.	Heliar 8½ ins. F 4.5 Ditto with Telephoto attachment	£27 0 0 Kleid £33 0 0 Kleber
½-Plate or 12 × 16½ cm.	10 × 10 × 8½ ins.	Heliar 9½ in. F 4.5 Ditto with Telephoto attachment	£30 0 0 Groguspigel £36 0 0 Grogutel	£31 10 0 Growespigl £37 10 0 Growetekel
Stereoscopic 2¾ × 5½ ins. or 6 × 13 cm.	4¾ × 5 × 7¾ ins.	2 Heliars 4¾ ins. F 4.5	£26 10 0 Kleist	£27 9 0 Kapwex

Cost of Mechanical Release, 5/- extra.

Solid Leather Sling	Case for Camera and three Double Dark Slides,	20/-	}	2½ × 3½ ins. or 6½ × 9 cm.	
"	"	22/6		}	Postcard size, 6 × 4 ins. or 10 × 15 cm. ½-Plate or 12 × 16½ cm. Stereoscopic 2¾ × 5½ ins. or 6 × 13 cm.
"	"	35/-			
"	"	40/-			
"	"	40/-			
"	"	45/-			
"	"	20/-			
"	"	22/6			

F. G. PHILLIPS, Sole Agent for Great Britain and Colonies.

Voigtländer "Stereoflectoscope"

New Stereo-Reflex Camera.

For Plates or Film Pack.

4½ x 1½ inches.

45 x 107 mm.



THE "Stereoflectoscope" is the smallest Stereoscopic Reflex Camera manufactured. It is constructed entirely of light metal. The full size picture is viewed on the top focussing screen up to the moment of and during exposure, the focussing adjustment of the lenses is done by rack and pinion movement; by this means objects can be focussed from infinity up to 6 feet. The apparatus is fitted with a rising front, the Iris diaphragm of the two lenses are adjusted simultaneously, and the Camera is fitted with a Sector Shutter with speeds from 3 seconds to 1/250th second.

The magazine changing box carries 12 plates which can be changed in any position and has an automatic counter showing the number of plates used.

The "Stereoflectoscope" is fitted with two "Heliar" Lens F4.5, and negatives produced with these lenses can be considerably enlarged without material loss of definition. For this purpose we recommend our special enlarging apparatus.

Prices. Code Word.

	£	s.	d.	
Voigtlander "Stereoflectoscope" with two "Heliar" Lenses F 4.5, magazine for 12 plates and mechanical release ..	22	10	0	Fobello
Extra magazine for 12 plates	4	0	0	Fotmagazin
Adapter for Single Nickel Dark Slides, with focussing Screen ..	10	0	0	Fotodapter
Six Single Nickel Dark Slides in case	17	0	0	Fotetui
Ditto, for Autochrome Plates.. .. .	19	0	0	Foantetin
Contrast Filters, A or B per pair	1	8	0	Fotalpha } A.
"Dukar" Autochrome Filters.. .. . per pair	1	5	0	Fotebeta } B
Film Pack Holder	1	5	0	Cromfilter
Stereoscope with Achromatic lenses for viewing the transparent "Stereoflectoscope" views	1	0	0	Fotpack
Reversing Frame for making the Stereoscopic Positive without cutting the Negative	1	0	0	Fostereo
	8	0	0	Stereram

Size of Stereoflectoscope complete, 6 x 4½ x 2½ ins. Weight, 2 lbs. 5 ozs.

SEND FOR COMPLETE CATALOGUE TO

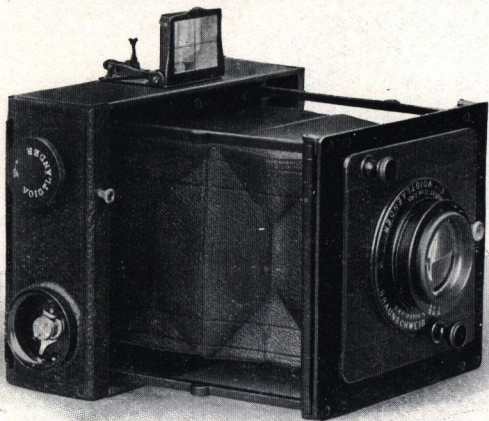
Metal Spring Camera

With Improved Patented Focal Plane Shutter (Self-Capping).

$\frac{1}{4}$ -Plate, or 9 x 12 cm.

$\frac{1}{2}$ -Plate, or 13 x 18 cm.

Press one lever and the Camera is ready for Exposure.



This Camera is the most perfect apparatus of the Focal Plane Type that has yet been manufactured; it has the advantage of being instantly brought into position for exposure by simply pressing the small lever to the right of the Finder, this releases the Finder and the Camera

front which spring into position. Another advantage is the Self-capping Focal Plane Shutter which is easily manipulated and can be set when the sheath of the dark slide has been drawn out.

	Fitted with Voigtländer Lens in Focussing Mount.	With 3 Double Dark Slides, Solid Form with folding Wood Shutters.	With 3 Double Dark Slides, Solid Form with extractable Vulcanite Shutters, or Book Form with folding Wood Shutters.	
	ins.	£ s. d.	£ s. d.	
$\frac{1}{4}$ -Plate or 9 x 12 cm size.	Dynar	5 $\frac{3}{8}$, F 6	13 10 0	14 0 0
	Collinear III.,	5 $\frac{3}{8}$, F 6.8	14 15 0	15 5 0
	Collinear II.,	5 $\frac{3}{8}$, F 5.4	15 10 0	16 0 0
	Heliar	6, F 4.5	15 10 0	16 0 0
$\frac{1}{2}$ -Plate or 13 x 18 cm size.	Dynar	7 $\frac{3}{8}$, F 6	..	16 15 0
	Collinear III.,	7 $\frac{3}{8}$, F 6.8	..	18 0 0
	.. II.,	8, F 5.4	..	20 0 0

Telephoto Attachment giving a fixed magnification of 2 $\frac{1}{2}$ times, for Objectives 5 $\frac{3}{8}$ ins., £3 0 0; 6 ins., £3 10 0; 7 $\frac{1}{8}$ or 8 ins., £4 5 0

Film Pack Holder, $\frac{1}{4}$ plate or 9 x 12 cm, 12/-

Solid Leather Sling Case for Camera and 3 Slides, $\frac{1}{4}$ plate or 9 x 12 c.m., £1; $\frac{1}{2}$ plate or 13 x 18 c.m., £1 3 0

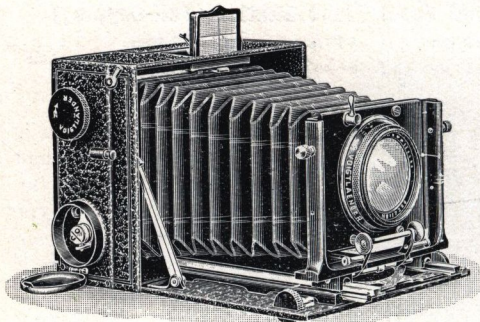
F. G. PHILLIPS, Sole Agent for Great Britain and Colonies.



Voigtländer Heliar Camera

With Improved Patented Focal Plane Shutter (Self-Capping).

$\frac{1}{4}$ -Plate, or 9×12 cm.



This Camera is constructed of Light Metal similar to the Voigtlander Metal Spring Camera, and for high-class workmanship and mechanical ingenuity is unsurpassable. The Heliar Camera is fitted with a Focal Plane Shutter of similar construction as in the Spring Camera. The Lens generally supplied with this Camera is a Heliar $7\frac{1}{8}$ ins. focus.

The Camera is fitted with Rack and Pinion Focussing movement with extension to 11 ins., enabling Lenses of various Focal lengths to be used

With Voigtländer Lens in Countersunk Mount.

Camera with 3 Double Dark Slides, Solid Form with Folding Wood Shutters.

Camera with 3 Double Dark Slides fitted with extractable Ebonite Shutters or Book Form with Folding Wood Shutters.

Heliar, $7\frac{1}{8}$ ins., F 4.5
Collinear II., 6 ins., F 5.4

£16 0 0
14 15 0

£16 10 0
15 5 0

Dimensions when closed, $6 \times 5 \times 2\frac{3}{8}$ ins. Weight, without Lens, 2lbs. 14 ozs.

Telephoto Attachment giving a fixed Magnification of $2\frac{1}{2}$ times, £4 5s.

Film Pack Holder, 12/- Leather Case for Camera and 3 Dark Slides, 20/-



Special Telephoto Attachment

FOR HAND CAMERAS,

giving a fixed magnification of $2\frac{1}{2}$ times.

This attachment is constructed to fit inside the Camera, an inner flange with thread being fitted to back of Lens enabling the Attachment to be easily put in position when required.

The Lens of the Camera is not interfered with in any way, and owing to the fitting of the Attachment inside, the rigidity of the Apparatus is not affected.

PRICES.

Attachment suitable for use with Anastigmats,

$4\frac{3}{8}$ and $5\frac{3}{8}$ ins. ... £3 0 0

Ditto, 6 ins. ... £3 10 0

SEND FOR COMPLETE CATALOGUE TO



Voigtländer

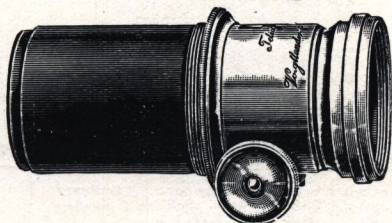
**Special Lenses for
Telephotography.**

Every degree of magnification may be obtained, according to the distance the Lens is placed from the plate. The image is from three to four times as large as that obtained by an ordinary Lens of the same focus as the Camera extension. An image ten to twelve times larger than that of the Positive Lens alone, can be obtained sharply defined.

The Telephotographic Lens is recognised as forming an essential part of the Photographer's outfit, as it gives him—within certain limits—a considerable range of foci to make the subject as large as he chooses.

PRICES.—The cost of complete Telephoto Lenses may be found by adding the cost of the Positive Lens selected to that of the Telephoto Attachment.

TELEPHOTO LENSES



TELEPHOTO ATTACHMENT.

No.	Price.
1	£4 5 0
2	4 5 0
3	4 15 0
4	5 5 0
5	6 0 0
6	7 10 0



CONTRAST FILTERS — IN CIRCULAR MOUNTS. —

Voigtländer Filters are toned by analyzing the various colouring substances for special purposes; no filter is permitted to leave our hands without having been carefully examined with the spectroscope. They are far superior in efficiency to the ordinary yellow glass screens coloured *en masse*, sold at nominal prices, which do not really act as filters, but only as dampers over the entire spectrum, for even the most dense of these is transparent to dark blue.

Contrast Filters serve completely to suppress blue. They are made in three different qualities; contrast A, contrast filter B and contrast filter Orange.

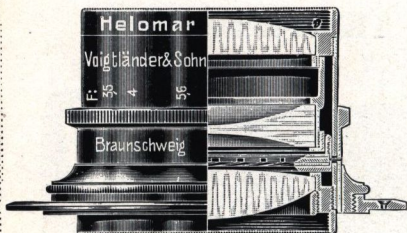
With a really good plate sensitive to colours the times of exposure when using contrast filter A is increased $\times 1\frac{1}{2}$, contrast filter B $\times 3$, contrast filter "Orange" $\times 5$, compared with an exposure made without filter.

No.	Diameter of Filter.		Price for A. B, or Orange Contrast Filter in Mount.		
	ins.	mm.	£	s.	d.
1	$1\frac{1}{4}$	28.5		17	6
2	$1\frac{3}{8}$	35		17	6
3	$1\frac{9}{16}$	40	1	0	0
4	$1\frac{5}{8}$	45	1	0	0
5	2	50	1	4	0
6	$2\frac{3}{16}$	55	1	4	0
7	$2\frac{9}{16}$	65	1	8	6
8	3	75	1	16	6
9	$3\frac{3}{4}$	95	2	0	0

Voigtländer **DUKAR**
FILTERS
FOR AUTOCHROME
PHOTOGRAPHY

PRICES UPON APPLICATION.

F. G. PHILLIPS, Sole Agent for Great Britain and Colonies.



Voigtländer "HELOMAR."

This objective is an Anastigmat with great power of illumination, excellent definition, and absolutely correct in lines.

This Lens is confidently recommended for work under the most unfavourable conditions of light.

For Cinematograph Photography, Focal Plane Shutter and Projection Work it is unrivalled.

Full Aperture up to 6 in. focus F 3.2.
7 1/4 and 9 1/4 ins. F 3.5. Angle of View, 40°

Equivalent Focus. ins.	Equivalent Focus. mm.	Size of Plate sharply covered. Full Aperture. ins.	Ordinary Mount.	Code Word.	Price for Lens in Focussing Mount.	Code Word.
4 3/4	120	2 1/2 x 3 1/2	£ s. d. 6 10 0	Dehles	£ s. d. 7 5 0	Diablo
6	150	3 1/4 x 4 1/4	9 0 0	Dehok	10 0 0	Diamar
7 1/2	180	3 3/4 x 4 3/4	10 10 0	Deinzer	11 10 0	Diander
9 1/2	240	4 1/4 x 6 1/4	14 10 0	Dejte	15 10 0	Dibamba

The cost of pairing two "Helomars" for Stereoscopic Work is 8/-.
Complete List of "Helomar" Lenses upon application.



"HELIAR" LENS

A brilliant Anastigmatic Objective, working at a full aperture of F 4.5 in all sizes.

Angle of View, 50°

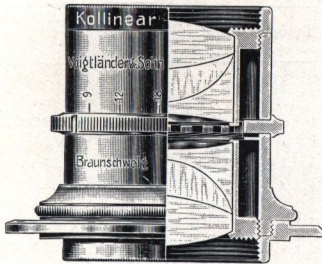
Specially recommended for Reflex Cameras and Press Photography.

Equivalent Focus. ins.	Diameter of Lens. cm.	Size of Plate sharply covered F 4.5. mm.	Ordinary Mount.	Code Word.	Counter-sunk Mount.	Code Word.	Focussing Mount.	Code Word.
2	5	2 x 1 1/8	£ s. d. 4 0 0	Fiasco	£ s. d.	£ s. d. 4 15 0	Fischer
2 1/2	6.2	2 x 1 1/2	4 5 0	Flakken	5 0 0	Finskog
2 3/4	7	2 x 1 3/4	4 10 0	Fialon	5 5 0	Finka
3 1/4	8.5	2 x 2	4 15 0	Fiber	5 0 0	Filz	5 10 0	Fischa
4	10	2 1/2 x 2	5 5 0	Flamme	5 10 0	Flatdal	6 0 0	Flavier
4 1/2	12.5	3 x 2 1/2	5 10 0	Fibrin	5 15 0	Fixage	6 5 0	Fiscos
5 1/2	13	3 1/4 x 3 1/4	6 0 0	Fibro	6 5 0	Fibrund	6 15 0	Fibrano
6	15	3 3/4 x 3 3/4	6 5 0	Fibrinosus	6 10 0	Fibroso	7 0 0	Filiorum
7 1/2	18	4 x 4	8 0 0	Figella	8 5 0	Filigran	8 15 0	Figurina
8 1/2	21	4 1/2 x 4	11 0 0	Fichte	11 10 0	Filter	12 0 0	Fittich
9 1/2	24	5 x 5	13 0 0	Finota	13 10 0	Finte	14 0 0	Finale
11 1/2	30	6 1/2 x 6 1/2	18 0 0	Firna	19 0 0	Fleming
14 1/2	36	8 x 8	24 0 0	Fisano
16 1/2	42	9 1/2 x 9 1/2	31 0 0	Fiscal
19	48	12 x 12	37 10 0	Fistel
24	60	16 x 16	75 0 0	Finger

The 2 and 3 1/4 inch "Heliars" are specially recommended for Cinematograph Photography.
The cost of pairing two "Heliars" for Stereoscopic Work is 8/-.

Voigtländer "Collinear" Lens.

"THE PERFECT LENS."



The "COLLINEAR" LENS may well be styled "The Perfect Lens," although one of our earliest and best known type of Anastigmat lenses, it is more popular in the photographic world of to-day than ever. It is peculiarly suited for both amateur and professional photographers, and there is no work for which the "Collinear" is unsuitable.

"Collinear" Lenses are symmetrical, the front and back combination being exactly the same focus, either can be used separately, and each in itself is a corrected achromatic anastigmat, giving searching definition. The detail in photographs taken with either or both combination of this lens is remarkable.

We supply "Collinears" to fit Kodak Hand Cameras so mounted that they can be fitted by the purchaser into the shutter of his camera. No alteration in the camera or shutter is necessary. A correctly marked diaphragm scale is supplied with each set

For No. 3 F.P. Kodak "Collinear" III, F 6.8 special focus $4\frac{1}{8}$ ins. ..	£5 5 0
" No. 3a " " " III, F 6.8 " " $6\frac{3}{8}$ ins. ..	£6 5 0
" No. 4a " " " III, F 6.8 " " $8\frac{1}{8}$ ins. ..	£8 15 0

When ordering specify which type of shutter your camera has

SERIES II.

Full Aperture, up to 8 ins. focus, F 5.4; 10 ins. to 24 ins.,
F 6.3. Angle of View, 80°.

Equivalent Focus.			Diameter of Lens.	Size of Plate sharply covered. At Full Aperture.	Ordinary Mount.	Code Word.	Countersunk Mount.		Focussing Mount.						
							Price.	Code Word.	Price.	Code Word.					
ins.	cm.	mm.	ins.	£	s.	d.	£	s.	d.	£	s.	d.			
2 $\frac{3}{4}$	6	11	2 × 2	4	10	0	Galen			
2 $\frac{1}{2}$	7	13	2 $\frac{1}{2}$ × 2 $\frac{3}{8}$	4	10	0	Galeotto			
3 $\frac{1}{2}$	9	17	3 $\frac{1}{2}$ × 2 $\frac{1}{2}$	5	0	0	Gandara	5	5	0	Gabes	5	15	0	Nager
4 $\frac{1}{2}$	12	23	4 $\frac{1}{2}$ × 3 $\frac{1}{2}$	5	15	0	Gaston	6	0	0	Gaflun	6	10	0	Narcose
5 $\frac{1}{2}$	13.5	26	4 $\frac{3}{4}$ × 3 $\frac{1}{2}$	6	5	0	Gatter	6	10	0	Galmei	7	0	0	Narcin
6	15	29	5 × 4	6	15	0	Gawein	7	0	0	Gambia	7	10	0	Nauders
7	17.5	33	6 × 4	7	15	0	Galeso	8	0	0	Gauchos	8	10	0	Nagaba
8	20	38	7 $\frac{1}{2}$ × 5	9	0	0	Gemma	9	8	0	Gaza	10	0	0	Negus
10	25	40	8 $\frac{1}{4}$ × 5	11	0	0	Georgia		
12	31	48	8 $\frac{1}{2}$ × 6 $\frac{1}{2}$	15	0	0	Ginster		
14 $\frac{1}{2}$	37	58	9 × 7	20	0	0	Gorgone		
17 $\frac{1}{2}$	44	70	10 × 8	27	0	0	Gudrum		
20 $\frac{1}{2}$	52	82	12 × 10	34	0	0	Guntram		
24	60	91	14 × 10	45	0	0	Gunter		

The cost of pairing two Collinears for Stereoscopic work is 8/-

Voigtländer "Collinear" SERIES III.

Full Aperture up to $7\frac{1}{2}$ in. F 6'8 ; 8 in. to 23 in.
F 7'7. Angle of View, 90°.

Equivalent Focus.			Diameter of Lens.		Size of Plate sharply covered.		Ordinary Mount.		Code Word.		Countersunk Mount.		Focussing Mount.	
											Price.	Code Word.	Price.	Code Word.
ins.	cm.	mm.	ins.	£	s.	d.	£	s.	d.	£	s.	£	s.	d.
$2\frac{3}{4}$	7	11	2 × 2	4	0	0	Hadramaut
$3\frac{1}{2}$	9	14	4 × 2 $\frac{3}{4}$	4	5	0	Hagar	4 10 0	Hebe	5 0 0	Narbo	5 0 0	Narbo	
4	10.5	16	4 × 2 $\frac{3}{4}$	4	10	0	Hasel	4 15 0	Herde	5 5 0	Nekro	5 5 0	Nekro	
$4\frac{1}{2}$	12	18	4 $\frac{1}{2}$ × 3 $\frac{1}{2}$	5	0	0	Hakon	5 5 0	Hedwig	5 15 0	Nathan	5 15 0	Nathan	
$5\frac{1}{2}$	13.5	20	5 × 4	5	10	0	Halde	5 15 0	Hegar	6 5 0	Natter	6 5 0	Natter	
6	15	23	6 $\frac{1}{2}$ × 4 $\frac{1}{2}$	6	0	0	Halma	6 5 0	Helga	6 15 0	Neckar	6 15 0	Neckar	
$7\frac{1}{8}$	18	28	7 $\frac{1}{2}$ × 5	7	5	0	Hassan	7 10 0	Helm	8 0 0	Nelda	8 0 0	Nelda	
8	20	27	8 $\frac{1}{2}$ × 6 $\frac{1}{2}$	8	0	0	Hatto	8 5 0	Heliodor	8 15 0	Nenner	8 15 0	Nenner	
10	25	34	9 × 7	10	0	0	Hella	
12	31	40	12 × 10	14	0	0	Hestia	
$14\frac{1}{2}$	37	47	14 × 10	18	0	0	Honduras	
$17\frac{1}{2}$	44	57	15 × 12	23	0	0	Horus	
$20\frac{1}{2}$	52	67	18 × 14	30	0	0	Hulda	
$23\frac{1}{2}$	58	76	20 × 16	42	0	0	Hutten	

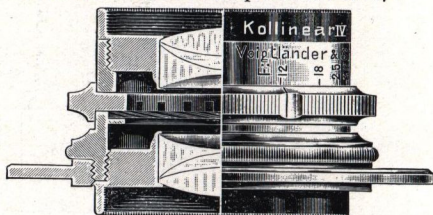
The cost of pairing two Collinears for Stereoscopic work is 8/-.

"Collinear" SERIES IV.

Full Aperture F 12'5.

Wide-Angle Anastigmat for Architectural, Process Work, and Landscapes.

The Wide-angle Collinears give, with full aperture, an angle of view of 100°.

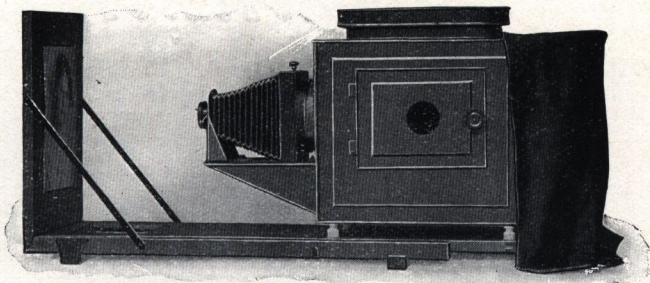


Equivalent Focus.			Diameter of Lens.		Size of Plate sharply covered.		Price.	Code Word.
					F 12'5.	Stopped Down.		
ins.	cm.	mm.	ins.	ins.	£	s.	d.	
4	10.5	8.8	4 $\frac{3}{4}$ × 3 $\frac{1}{2}$	6 $\frac{1}{2}$ × 4 $\frac{3}{4}$	3	10	0	Kabale
$4\frac{1}{2}$	12	10	6 $\frac{1}{4}$ × 4 $\frac{3}{4}$	8 × 6	4	5	0	Kabul
6	15	12	7 × 5	10 $\frac{1}{2}$ × 8 $\frac{1}{2}$	5	0	0	Kallias
$7\frac{1}{8}$	18	15	9 $\frac{1}{2}$ × 7 $\frac{1}{4}$	12 × 9 $\frac{1}{2}$	5	10	0	Komtur
8	20	16	10 $\frac{1}{2}$ × 8 $\frac{1}{2}$	12 × 10	6	0	0	Kandahar
10	25	21	12 × 10	15 × 12	8	0	0	Kaste
$12\frac{1}{2}$	32	26	15 × 12	22 × 18	9	10	0	Kondor
$17\frac{1}{2}$	44	35	22 × 18	27 $\frac{1}{2}$ × 23 $\frac{1}{2}$	13	0	0	Konon
23	58	46	27 $\frac{1}{2}$ × 23 $\frac{1}{2}$	31 $\frac{1}{2}$ × 27 $\frac{1}{2}$	20	0	0	Korfu
$31\frac{1}{2}$	80	65	31 $\frac{1}{2}$ × 27 $\frac{1}{2}$	39 $\frac{1}{4}$ × 31 $\frac{1}{2}$	32	10	0	Kuno
40	100	80	39 $\frac{1}{4}$ × 31 $\frac{1}{2}$	47 $\frac{1}{2}$ × 35 $\frac{1}{2}$	45	0	0	Kupol

SEND FOR COMPLETE CATALOGUE TO

Voigtländer

Enlarging and Projection Apparatus for Stereoflectoscope and other small Negatives.



The body of this Apparatus is constructed of Russian Iron; it is fitted with a 103 mm (4 in. diam.) condenser and an anastigmat objective, possessing very great luminosity. Negatives and Positives, up to the size $2\frac{1}{2}$ in. \times $3\frac{1}{2}$ in. ($6\frac{1}{2}$ \times 9 cm.) can be enlarged and projected.

The apparatus is mounted on a baseboard, to which is fitted an easel for holding the sensitive paper.

A negative carrier for enlarging one negative of the two stereoflectoscope pictures, and a lightning carrier for lantern slide projection is supplied with the instrument.

PRICE.

Enlarging Apparatus with objective, negative carrier and double slide carrier, without lamp, for Stereoflectoscope plates	£	s.	d.	Code Word.
			8	Cajetan.
			5	
			0	

For particulars of Illuminating Apparatus see General Catalogue.

Voigtländer

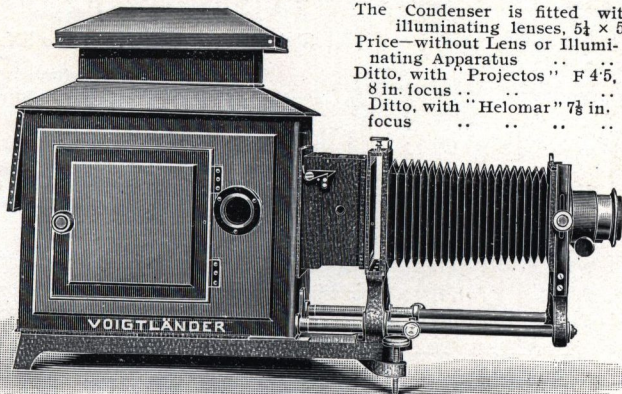
ENLARGING AND PROJECTION APPARATUS.

“SCHOLAST.”

Superior Apparatus constructed of Russian Iron, lined with Asbestos.
For Negatives or Lantern Slides $3\frac{1}{2}$ \times $3\frac{1}{2}$ ins., $3\frac{1}{2}$ \times $4\frac{1}{2}$ ins., and 9 \times 12 cm.

The Condenser is fitted with square illuminating lenses, $5\frac{1}{4}$ \times $5\frac{1}{4}$ ins.

Price—without Lens or Illuminating Apparatus	£8	10	0
Ditto, with "Projectos" F 4.5, 8 in. focus	£15	10	0
Ditto, with "Helomar" $7\frac{1}{8}$ in. focus	£20	0	0



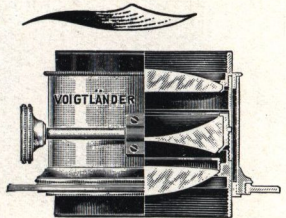
F. G. PHILLIPS, Sole Agent for Great Britain and Colonies.



Voigtländer



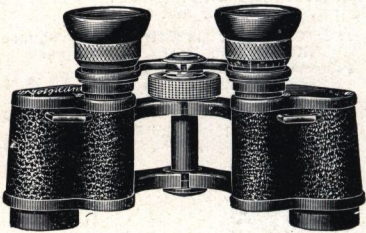
**LENSES FOR
Projection and
Cinematograph
Photography.**



THE increased popularity and advance in Cinematograph Photography and Optical Projection has created an increased demand for high-grade Lenses suitable for this work. Therefore we have produced, besides our well-known Objectives for Projection work, some new types with special qualifications.

Separate full and descriptive Catalogue of Cinematograph Lenses and Projection Apparatus free on application.

Voigtländer



Prism Binoculars.

Giving Enhanced Stereoscopic Effect.

Invaluable for Sporting, Racing, Aviation, Touring, Military and Naval purposes.

The Voigtländer Prism Binocular combines the highest optical and mechanical excellence, giving brilliant definition and exceptionally large field of view.

- × 6 Magnification - - - £4 - 15 - 0
- × 8 Magnification - - - £5 - 0 - 0

Complete in Leather Sling Case.

Fully Illustrated Catalogue post free on application.

Telephone—
6620 (2 Lines) HOLBORN.



Telegrams—
BINOCLE, SMITH, LONDON.