

The 'N. & G.' Reflex



“SIBYL,”
ROLL FILM “SIBYL,”
“BABY SIBYL,” &
“TRELIS” CAMERAS.

And all Photographic Sundries.

Our reputation of merit earned during a period of over 20 years has been voluntarily awarded by users of our apparatus, who have found complete satisfaction in the reliable and trustworthy apparatus we have had the pleasure of placing in their hands. Hundreds of testimonials can be shown in proof of this claim, many of which are from eminent workers in all parts of the world. “N. and G.” Cameras also were awarded the highest Diplomas in the Photographic sections, both of the Paris 1900, and Japan-British, 1910, Exhibitions.

We take the greatest pride in these facts, and our friends may rest assured that the future policy of “N. and G.” will be one of progress along the old lines of Reliability and Quality, and thus we feel we may look with assurance for a continued and increasing support among all descriptions of Photographers.

**NEWMAN & GUARDIA, Ltd., 17 & 18, Rathbone Place,
Oxford Street, London, W.**

NEWMAN & GUARDIA, Ltd.,

Manufacturers of

SCIENTIFIC INSTRUMENTS

— AND —

High-class Photographic Apparatus.

Telegraphic Address:
"GONIOMETER," LONDON.
Code 5th Ed. A.B.C.

Telephone:
No. 3525 Central.

OFFICES, SHOWROOMS AND WORKS—

17 & 18, Rathbone Place, Oxford Street,
LONDON, W.

TERMS.

Previous Catalogues, Price Lists, and Advertisements, differing from following quotations, are hereby cancelled.

The prices in this Catalogue are *STRICTLY NET*.

All goods must be paid for on, or before, delivery. Unless specially instructed, prepaid Foreign or Colonial orders are sent parcel post where possible, or if too heavy for post, by first steamer, and packed in tin-lined cases.

Foreign or Colonial orders not paid in advance or not paid in full, cannot be sent by post, but are shipped through a Bank or Agent for delivery on payment of account, or balance of invoice.

Packing and Carriage charged extra. *Empties not allowed for.*

Goods are packed with the utmost care, and we cannot hold ourselves answerable for any damage they may sustain in transit, either at home or abroad.

DEPOSIT ACCOUNTS.

For convenience of customers residing or travelling in the country or abroad, Regular Supplies of *Fresh Photographic Materials* can be sent. Deposit Accounts may be opened for this purpose, and, in order to avoid the expense of small remittances, for any desired amount.

CORRESPONDENCE.

In English, French, German, and Italian.

"N. & G." INSTRUMENTS ARE NOT SENT ON APPROVAL

NEWMAN & GUARDIA, Ltd., 17 & 18, Rathbone Place,
Oxford Street, London, W.

THE MOST COMPLETE MIRROR FOCUSING CAMERA MADE.

THE "N. & G." TWO-SHUTTER
"Reflex de Luxe."

THREE CAMERAS IN ONE.

TO BE USED AS:—

Standard Reflex Focal Plane Camera for high speed work.

Front Shutter Reflex Camera for slow exposures, Autochromes, Portraits, Studies, etc.

Stand or Field Camera, working **INDEPENDENTLY** of **Mirror**, and focussing on ground glass at back, for special work, badly lighted subjects, interiors, etc.

In a few words, the action of an "N. & G." Reflex Camera is as follows:—



Showing **DOUBLE EXTENSION** and **FRONT SHUTTER CONTROL**.

The image thrown by the Lens, instead of passing uninterruptedly to the plate at the back of Camera is intercepted by a Mirror inclined at an angle of 45° inside the Camera, and is reflected on to a Focussing Screen at the top of apparatus, where it is focussed. The Mirror on being raised by pressure of release, shuts off image from top screen, and releases shutter—exposing plate. The Reflex Camera shows *full size* image reflected on Ground, Glass, up to the moment of exposure, in the same degree of brilliancy and light as will be thrown by the Lens on to the plate on the raising of the Mirror.

The practical construction of a Reflex Camera, as shown by the foregoing requirements, involves many technical problems not easy to surmount, which in by far the largest proportion of Reflex Cameras on the market, cannot be said to be satisfactorily applied. They sound very simple in theory, but the practical construction of a thoroughly efficient and reliable Reflex Camera is an exceedingly difficult matter, and any who contemplate purchasing this type of instrument will do well to remember the importance of quality of workmanship, as an all-important feature, and also the design and type of the Focal Plane Shutter fitted.

The unique position enjoyed by the firm of Newman and Guardia for over 20 years past, as makers of the highest class apparatus only, during a large part of which time the closest attention and study to Reflex Camera principles and construction has been given, and modifications, improvements, or adaptations made to these Cameras where experience has shown them to be necessary, has resulted in the Cameras we now offer to our patrons, and which are described hereafter.

NEWMAN & GUARDIA, Ltd., 17 & 18, Rathbone Place, Oxford Street, London, W.

THE "N. & G." TWO SHUTTER REFLEX.—Continued.

"N. & G." FRONT SHUTTER, of new design. Between Lens type, speeds from 1 second to $\frac{1}{64}$ th second, Ball, Time, and Instantaneous movements. $\text{\textcircled{e}}$ "N. & G." Patent Pneumatic Control.

FOCAL PLANE SHUTTER. "N. & G." Standard Pattern and workmanship. NO TAPES, giving exposures from $\frac{1}{16}$ th second to $\frac{1}{800}$ th second.

THE PATENT "N. & G." SPLIT MIRROR is fitted to all models of "N. & G." Reflexes. By this exceedingly clever device the fitting of shorter focus lenses has been made possible, and no part of the picture is cut off, as happens when a mirror of too small size is employed.

FULL DOUBLE EXTENSION, available for use with either shutter working in conjunction with Mirror, and allowing full advantage possible for use of single combination of Zeiss Double Protar Lens fitted.

INTERLOCKING SYSTEM, effectually securing one Shutter whilst other is being used.

DETACHABLE FRONT SHUTTER BOX, permitting convenient use of Telephoto or large Aperture Lenses.

THE CAMERA IS FITTED WITH A THUMB HANDLE on left hand side, so placed that the fingers come immediately over the Shutter Release. The right hand is left free for focussing, which may be adjusted until the subject (if a moving one) is in the same size and position on Ground Glass as it is required on plate.

REVERSING FOCUSING HOOD can be fitted to order, enabling user to photograph left or right of direction in which he is facing without attracting undue attention.

AN IMPORTANT FEATURE! The Zeiss $f/4.5$ Tessar Lens can be fitted interchangeably with the $f/6.3$ Double Protar to Front Shutter, in quick change mounts. For general features see also specification of "Standard" model.

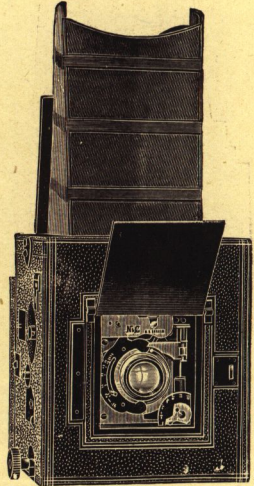
WITH ALL THESE ADDITIONS AND IMPROVEMENTS, THE CAMERA IS THE SAME SIZE AS THE "STANDARD" MODEL, AND THERE ARE NO PROJECTIONS.

PRICES.

(Made in $\frac{1}{4}$ plate and 5×4 sizes only.)

"N. & G." TWO SHUTTER "REFLEX DE LUXE," complete with three Double Dark Slides, Webb Sling, fitted with Zeiss Double Protar Lens, $f/6.3$, giving two foci. (The $f/4.5$ Zeiss Tessar Lens can be adapted to Front Shutter to order.)	$\frac{1}{4}$ plate	5×4
THE FRONT SHUTTER "REFLEX," complete with three Double Dark Slides and Webb Sling, and fitted with Zeiss $f/6.3$ Double Protar Lens, giving two Foci	£45	£50
	£35	£40

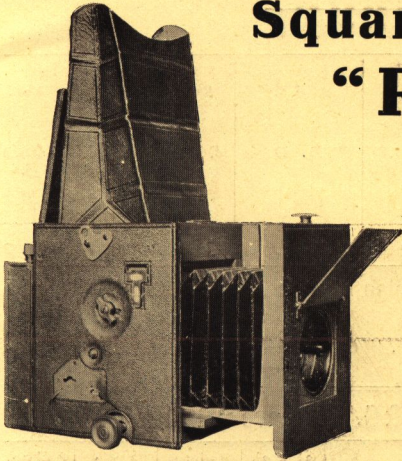
(For Sundries, see page 92.)



Showing FRONT SHUTTER.

NEWMAN & GUARDIA, Ltd., 17 & 18, Rathbone Place, Oxford Street, London, W.

The "N. & G." Standard Square Reflector "REFLEX" Camera.



S.R. CAMERA OPENED. SHOWING THE NEW FOLDING HOOD DRAWN UP, AND THE FRONT EXTENDED FOR COPYING FULL SIZE.

In the foregoing description of the Two Shutter "REFLEX DE LUXE" the remarks concerning the Focussing Hood, Focal Plane Shutter, Full Double Extension, Split Mirror, and fitting of $f/4.5$ Zeiss Tessar Lens apply also to this model. The following features of the "Standard Reflex" are given also on the "Reflex de Luxe":—

SELF ERECTING FOCUSSING HOOD, allowing full view of Image on Screen. Folding Eyepieces to suit any sight can be fitted, which fold neatly into hood.

FULL RISING FRONT, controlled by quick running screw.

REVERSING BACK, locking automatically into position.

TWO SEPARATE RELEASES fitted, one on left side of Camera, which allows right hand to be kept free for quick focussing; the right hand release is adapted for Ball and Tube Attachment, for Time and Instantaneous Exposures.

TWO HANDLES PROVIDED. Top one for carrying Camera, and left hand side thumb handle affords steady and comfortable balance of Camera when exposing.

On "Standard" model, the Lens is mounted in a Detachable Lens Cup. This can be quickly removed as required, for substitution of Supplementary Lenses, as Telephoto, Large Aperture Lenses, etc. A Special Quick Change Adapter may be fitted to order, so that one Lens Cup may be instantly removed and replaced by another.

NEWMAN & GUARDIA, Ltd., 17 & 18, Rathbone Place,
Oxford Street, London, W.

The "N. & G." Standard Square Reflector "REFLEX" Camera.—Continued.

PRICES.

"N. & G." Standard "REFLEX" Camera, complete with 3 Double Dark Slides, and Webb Sling, and fitted with Zeiss Double Protar f/6.3 Lens, giving 2 Foci ..	$3\frac{1}{2} \times 2\frac{1}{2}$ plate.	$\frac{1}{4}$ plate, $4\frac{1}{4} \times 3\frac{1}{4}$.	5 × 4, 9 × 12cm.	$\frac{1}{2}$ plate, $6\frac{1}{2} \times 4\frac{3}{4}$.
£30 0 0	£35 0 0	£40 0 0	£50 0 0	
"N. & G." Standard "REFLEX" Camera, complete with 3 Double Dark Slides, Webb Sling, but without Lens, and including cost of fitting any suitable Lens (from)				
25 0 0	27 10 0	32 0 0	40 0 0	

Lenses recommended : Zeiss Double Protar, Series VII.

No. 1.1. $3\frac{1}{2} \times 2\frac{1}{2}$ plate. $4\frac{1}{8}$ in. f/6.3 and 7 in. focus, f/12.5.	Special $\frac{1}{4}$ plate, $4\frac{1}{4} \times 3\frac{1}{4}$. $5\frac{1}{2}$ in. f/6.3 and $9\frac{1}{2}$ in. focus, f/12.5.	No. 3.3. 5 × 4, 9 × 12 cm. $6\frac{1}{2}$ in. f/6.3 and $11\frac{1}{2}$ in. focus, f/12.5.	No. 4.4. $\frac{1}{2}$ plate, $6\frac{1}{2} \times 4\frac{3}{4}$. 8 in. f/6.3 and 11 in. focus, f/12.5.
---	---	---	---

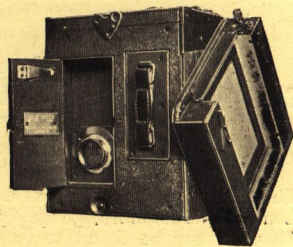
Prices of Sundries for "N. & G." Square "Reflex" Cameras

Strong Velvet-Lined Leather Cases, to hold Camera, Slides, and Sundries	$3\frac{1}{2} \times 2\frac{1}{2}$ plate.	$\frac{1}{4}$ plate, $4\frac{1}{4} \times 3\frac{1}{4}$.	5 × 4 plate.	$\frac{1}{2}$ plate, $6\frac{1}{2} \times 4\frac{3}{4}$.
"N. & G." Changing Boxes, for 12 Plates or Films, or 24 Cut Films	£1 10 0	£1 15 0	£2 0 0	£2 10 0
Special Film Pack Adapter, for Daylight Changing Premo Pack	2 15 0	3 0 0	3 10 0	4 15 0
Set of 6 "Sibyl" Single Metal Slides, with Adapter and Leather Case	1 10 0	1 15 0	2 15 0	2 15 0
"N. & G." "Reflex" Telephoto Attachment, including Adapter, and marking Degrees of Amplification	1 7 6	1 15 0	—	—
Supplementary Shutter for long Automatic Exposures, Fitting same, and Leather Case ..	5 15 0	5 15 0	5 15 0	6 12 6
Set of 3 "N. & G." Double Dark Slides and Adapter	1 5 0	1 5 0	1 10 0	1 15 0
	1 15 0	2 8 6	2 17 0	3 8 0

All Reflex woodwork carried out in old-seasoned mahogany, every board being clamped and cross-tongued. All joints screwed and guaranteed to withstand severest climatic conditions. All metal parts, wherever possible, magnalium for lightness, covered Hard Grain Black Morocco Leather.

We guarantee these Cameras to be made from start to finish in our own Factory.

First grade workmanship only, INSIDE & OUT



NEWMAN & GUARDIA, Ltd., 17 & 18, Rathbone Place, Oxford Street, London, W.

The "N. & G." Folding Pocket Sibyl Camera.

(PATENTED.)

Including the New and Ingenious
VEST POCKET "BABY" SIBYL.

Guaranteed Made and Finished by hand in
our own Workshops, by Expert Workmen.

The **British Journal** says:—"We have never handled a Camera which came near the 'Sibyl' in combination of practical efficiency and slim dimensions."

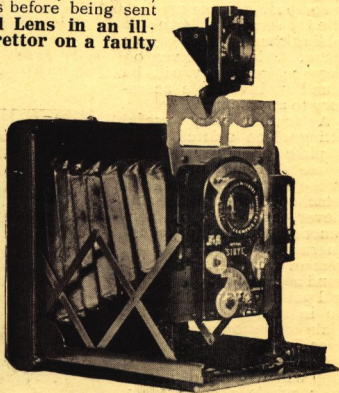


"SIBYL DE LUXE" MODEL No. 1.
($\frac{1}{4}$ Plate.)

Although so compact and portable, they contain every modern movement and improvement, while expert attention is given to construction and assembly in every detail, ensuring total reliability, constancy, and efficiency of all working parts.

We lay great stress on the care given by our works to the mounting of the Lenses fitted to these Cameras. This is necessary, and of the utmost importance if their perfect qualities are to be utilised and fully brought into use. Such points as Parallelism with Plate and the Centring of Lenses require scrupulous attention, and this we guarantee is individually given by expert workmen in the assembling of Sibyl Cameras, which are also subjected to severe final tests before being sent out with special testing appliances. **A good Lens in an ill-constructed Camera, is like a good Carburettor on a faulty Engine.**

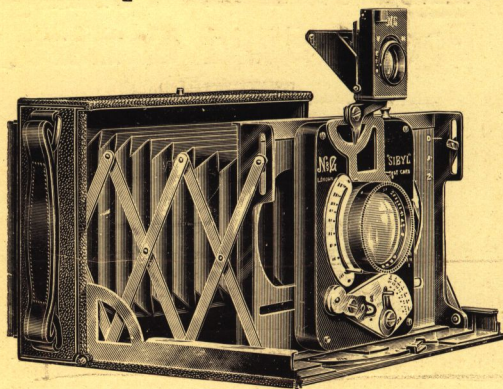
Sibyl Cameras being designed and constructed on highly scientific principles, are remarkably rigid when extended for use. The patent "N & G" Lazy Tongs, or Trellis Bars, are largely responsible for this fact; worked as they are in combination with the Side Runners of baseboard, and the back and front frames of Camera body, the Sibyl is almost equally rigid as the heavier form of Box Camera. This rigidity is for many obvious reasons of extreme importance to the general efficiency of a Camera. The Patent Trellis as fitted to the Sibyl is tied to four immovable points, two at the base of the back, and two correspondingly at base of Front Frames, the two former being connected by a riveted tie rod ensuring both sides of Trellis extending equally and together. The four top extremities are connected to the front and back frames by T-headed screws sliding in parallel slot guides as the Camera is opened or closed. The effectiveness of this fitting will be seen in relation to such precise particularities as constant parallelism of front with Plate, at all positions of



"IMPERIAL" SIBYL.
MODELS Nos. 8 and 9. ($\frac{1}{4}$ Plate.)

NEWMAN & GUARDIA, Ltd., 17 & 18, Rathbone Place,
Oxford Street, London, W.

"N. & G." SIBYL CAMERAS—(continued).



POSTCARD SIBYL.

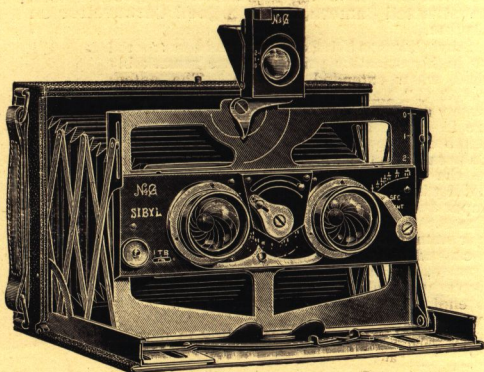
Rising Front, both vertically and horizontally, and more especially is this important when Camera is fitted with Large Aperture Lens.

Special notice is also drawn to the delicacy of releases fitted to all "Sibyl" models as a most important feature. In designing shutters we have always aimed at reducing risk of movement during exposure, to a minimum quantity, by installing them with a release which responds to the lightest touch compatible with safety. It is no exaggeration to say that with care hand exposures as long as $\frac{1}{4}$ or even $\frac{1}{2}$ second may be given with this Camera.

All models are fitted with the unique "N. & G." patent lever focussing device, which as it works from a fixed and excentric point, the full extent of its movement covers a large arc of a circle, and is the best form for accurate and critical focussing. The scale distances engraved on same are also able to be kept well separated and distinct. This Lever may be left set at any given distance, and the Camera will always open to the same focus until setting Lever is altered.

Certain models, according to price, are fitted with the ingenious "N. & G." Patent Folding Reflector Finder, which, besides being of the neatest form, gives a large reflected image, and has a sliding Lens, which shows precisely the amount of Rising Front necessary in composing a picture, as will be received on plate. These finders, by the way, may be fitted to various forms of folding Cameras not of our make. Prices are given on page 20, and they will be found an invaluable accessory to any Camera.

A further very useful fitting which is fitted on all $\frac{1}{4}$ plate or larger models (Plate or Roll Film Series) is the Depth of Field Scale attached to end of Focussing Lever, and used in conjunction with scale distances engraved. It shows at a glance what distance beyond and in front of the central point focussed upon will be in sharp focus on the plate or film by employing a specific aperture. Or, in other words, precisely which stop will give best definition over whole area of view, with the largest possible lens aperture.



STEREOSCOPIC SIBYL.

(For Prices see pages 99 and 100.)

NEWMAN & GUARDIA, Ltd., 17 & 18, Rathbone Place, Oxford Street, London, W.

THE "SIBYL" SHUTTERS

On every Model are encased in Dust-proof, Non-corrosive Metal Boxes.

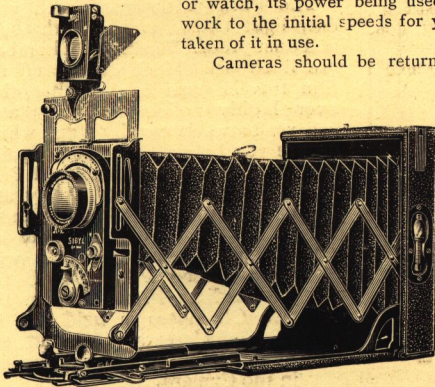
These Shutters are pneumatically controlled, of simple and therefore reliable construction and design. All the working components being of brass or German silver, they cannot easily get out of order, and are not affected by any change of climate.

Pneumatic control, as designed for our Shutter, is universally agreed to be the most constant and reliable form, and therefore all speeds marked on index may be counted absolutely correct.

We would emphasise here that all fractions marked on any "N. and G." Shutter Speed Index are engraved from actual readings taken through our Special Shutter Speed Testing Machine, and we unreservedly guarantee that this is done in the case of each and every Shutter turned out by our Works.

As the function of Shutter mechanism comes into the same category as that of a clock or watch, its power being used to overcome friction only, it will work to the initial speeds for years, providing reasonable care is taken of it in use.

Cameras should be returned, however, every two or three years to the makers for cleaning and re-adjusting.



MODEL No. 1 QUARTER-PLATE "SIBYL" DE LUXE DOUBLE EXTENSION.

All quarter plate models can be adapted to take suitable wide-angle Lenses. Supplementary Lenses, for use in conjunction with lens fitted, can be supplied for the purpose of photographing small objects near camera — Copying, Portraiture, etc.

All "Sibyl" models are admirably suited for Autochromes (Coloured Photography), special "N & G." Wooden Dark Slides being made which open from back. The Autochrome plate can therefore be dropped in

without damage to delicate surface. The Register of this Slide is adjusted to allow for the difference occasioned by having to use Autochrome plates with glass side towards Lens. No alteration to Focussing Screen being necessary. These Slides are fitted with a Spring Back (same size as plate) covered with Velvet, and this evenly distributes the necessary pressure to keep plate in register over its whole surface.

Several new models have recently been added to the "Sibyl" Series, and a brief description of their general features will be found below. Roll Film "Sibyl" Cameras are now obtainable for the benefit of travellers and those who prefer this type of apparatus.

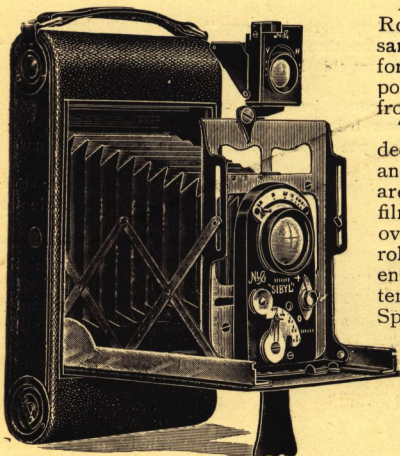
The new "Baby Sibyl" Camera is also bound to create wide interest, and is undoubtedly the cleverest and most complete type of Vest Pocket Instrument.

NEWMAN & GUARDIA, Ltd., 17 & 18, Rathbone Place, Oxford Street, London, W.

THE NEW "N. & G." ROLL FILM "SIBYL" CAMERA.

This model has been introduced for the convenience of Travellers, and in gratification of frequent requests by Amateurs to add it to our "Sibyl" series. It will eventually be obtainable in same sizes as plate models, including Vest Pocket.

The following are its leading features:—



ROLL FILM SIBYL.

In design, and all working parts, the Roll Film "Sibyl" is substantially the same as the plate models, and it is therefore unnecessary to enumerate these points here, as they may be obtained from preceding and following pages.

The Back is designed with very deep-light traps, and is both light and dust proof. The Spool Chambers are lined with black cloth, and the film travels from one to the other over highly polished silver plated rollers, between metal guides which ensure parallelism. A strong Spring tension prevents the unexposed Film Spool from unwinding too freely, and a Free Wheel Spool Winder (which allows of absolutely no backlash) being connected with the exposed Film Spool, the intermediate Film between the two Chambers is held flat by back of Camera, while in the position ready to receive exposure in the Camera.

The film is thus held absolutely taut, and no buckling trouble of any description need be feared.

The back is quickly removed by pressing two concealed Spring buttons in sides of case, when it instantly raises itself ready for easy detachment. There are no unsightly finger springs or plates attached to this Back which easily break and make an opening for the entry of dust to Film.

Every Roll Film "Sibyl" is fitted with the Patent Folding Reflector View Finder, which we guarantee shows exactly the same picture as is received on film, at any position of Rising Front.

The above facts, taken with foregoing particulars of "Sibyl" Camera fittings and adjustments, will readily convince everybody of the superiority of the "Sibyl" Roll Film Camera over any other make.

(For Prices see pages 99 and 100.)

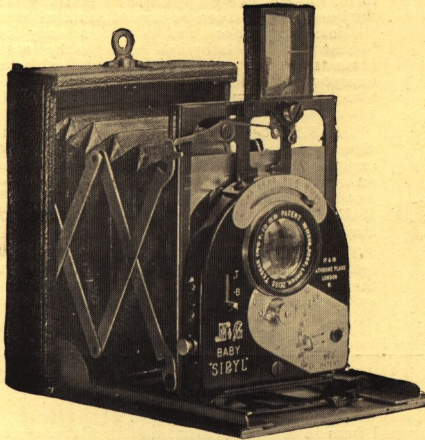
NEWMAN & GUARDIA, Ltd., 17 & 18, Rathbone Place,
Oxford Street, London, W.

THE NEW PATENT "N. & G." VEST POCKET "BABY" SIBYL CAMERA.

ROLL FILM OR PLATE MODELS.

This is a Camera of such dimensions that it may be constantly carried on the person without inconvenience or obtrusion. It will meet the requirements of the most fastidious in every essential. Small and light enough to be carried in the top pocket of a gentleman's waistcoat without incommodity, or concealed in a lady's attire without compromising her tailor's art in the very least, for which fact we have no doubt our lady patrons will be grateful. Its dimensions, in short, are not those of a pocket-case, or a purse.

Regardless of these facts, the little instrument is complete in every detail and furnished with the most improved movements, and it is capable of the highest class of work.



(For Prices see pages
99 and 100.)



BABY SIBYL CAMERA ($4\frac{1}{2} \times 6$ cm., or $2\frac{5}{16}'' \times 1\frac{3}{4}''$) HALF ACTUAL SIZE.

Three models only are made, fitted with either a Zeiss or Ross Zeiss $f/4.5$ Tessar Lens, or Cooke $f/5.6$, all of 3 in. focus, the excellent qualities of which are used to their full advantage. Negatives full of the sharpest detail are obtainable every exposure, and these are capable of enlargement to many times their diameter, with no appreciable falling off in definition.

The new Camera is constructed entirely on the lines of the older models, having the same movements throughout, with some additional improvements.

It has Horizontal and Vertical Rise (full $\frac{1}{4}$ of plate), which movement is obtained without swinging or straining the Trellis bars, in any way, and ensuring perfect parallelism at all positions of Rising Front.

An improved Shutter giving direct Time and Bulb movements in addition to Instantaneous Exposures, gives guaranteed speeds from $\frac{1}{2}$ sec. to $1/2000$ th sec.

Automatic Self-erecting, and Self-closing Direct Vision View Finder, and magnifying Sighting Lens, and a new and patented design of Trellis Bars.

The Camera is the same register for Dark Slides or Film Pack, and a Roll Film model is also obtainable, which only differs from Plate model by being fitted with Folding Reflector Finder (which gives exceptionally large picture), and, naturally, the Roll Film Body.

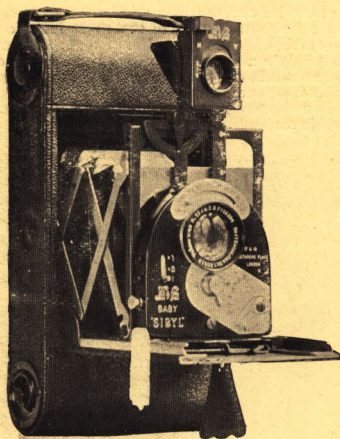
This Camera is of metal construction throughout, covered in hard grain morocco leather. Altogether self-contained and devoid of any projection, the lens being safely protected from damage or scratching by Tail-board of case.

The weight of Camera, complete with one slide in position, is only 8 oz., which is **half that of any other make of similar size.**

Highest class "N. & G." finish only, equal to that of other Cameras of our make.

NEWMAN & GUARDIA, Ltd., 17 & 18, Rathbone Place, Oxford Street, London, W.

The New (Patent) "N. & G." Vest Pocket Roll Film "BABY" SIBYL CAMERA



The Roll Film "Baby" Sibyl.

This new model opens a new interest to photographers using Roll Films, in the same way as its contemporary, the plate model (described on previous page), does to users of plates.

As its name denotes, it is a Camera of the smallest dimensions, and of a most convenient form. It has every adjustment necessary for the best work, and can be carried about without the least discomfort, and is always ready for instant use. The Baby Roll Film has the same fittings throughout as the plate model, with the exception of the body, this latter being constructed in the same way as the larger size Roll Film Models.

The Film negatives will enlarge very considerably, and give excellent definition. We expect this model will appeal strongly to ladies on account of its exceeding portability, but we would impress upon all, that the "Baby" Roll Film Camera is capable of really First Class work.

The Folding Finder is a very important feature of this model, being considerably larger than other makes, and giving identical picture as received by plate, at all positions of Rising Front.

(For prices see page 99.)

"N. & G." PLATES.

"N. & G." Plates are specially prepared from selected emulsion, rich in silver, of the finest grain, coated on special thin glasses. They will be found to produce bright clean negatives, of very full gradation. They are exceptionally free from fog, pinholes, or other plate blemishes. Large plate stocks are never carried, and we are therefore able to guarantee **ABSOLUTE FRESHNESS.**

PRICES.

	Speeds H. & D.	$4\frac{1}{2} \times 6$ cm Per doz.	$3\frac{3}{8} \times 2\frac{1}{4}$ Per doz.	$\frac{1}{2}$ -pl. Per doz.	5×4 Per doz.	$5\frac{1}{2} \times 3\frac{3}{8}$ Per doz.	$\frac{1}{4}$ -pl. Per doz.
"N. & G." Special (Fine Grain) ..	225	8d.	1/-	1/6	2/6	2/6	3/8
"N. & G." H.S. (High Speed) ..	350	8d.	1/-	1/6	2/6	2/6	3/8
"N. & G." S.R. (Special Rapid) ..	250	6d.	9d.	1/-	1/7	1/7	2/3
"N. & G." Ortho	170	6d.	9d.	1/-	1/7	1/7	2/3
"N. & G." Nydia (Fine Grain) ..	250	—	—	1/2 per pkt. of 8	—	—	—
Backed Plates (extra all makes)	2d.	3d.		3d.	4d.	4d.

All other makes of plates are stocked at standard prices.

NEWMAN & GUARDIA, Ltd., 17 & 18, Rathbone Place,
Oxford Street, London, W.

PRICE LIST OF "SIBYL" CAMERAS.

Plate Models complete with Six Single Metal Dark Slides in Leather Case.

Model No.	Name.	Size of Plate.	Lens.	Full Aper.	Price.
100	"Baby Sibyl" ..	4½ × 6 cm.	Zeiss Tessar ..	f/4.5	£ 11 11
101	do. ..		Ross-Zeiss Tessar	f/4.5	11 11
102	do. ..	2 ⁵ / ₁₆ " × 1 ³ / ₄ "	Cooke	f/5.6	11 0
103	do. Roll Film..	do.	Zeiss Tessar	f/4.5	13 13
104	do. do. ..	do.	Ross-Zeiss Tessar..	f/4.5	13 13
105	do. do. ..	do.	Cooke	f/5.6	13 0
1	"Sibyl De Luxe" ..	4 ¹ / ₄ " × 3 ¹ / ₄ "	Zeiss Double Protar	f/6.3	22 10
1A.	do. Roll Film..	do.	do.	f/6.3	25 10
2B.	Special "Sibyl" ..	do.	Zeiss Tessar	f/4.5	17 17
2C.	do. do. ..	do.	Ross-Zeiss Tessar..	f/4.5	17 17
17	do. Roll Film..	do.	Zeiss Tessar	f/4.5	18 18
2E.	do. do. ..	do.	Ross-Zeiss Tessar..	f/4.5	18 18
3	Ordinary "Sibyl" ..	do.	Zeiss Tessar	f/6.3	14 14
3A.	do.	do.	Ross-Zeiss Tessar..	f/6.3	14 14
3B.	do. Roll Film..	do.	Zeiss Tessar	f/6.3	15 15
3C.	do. do. ..	do.	Ross-Zeiss Tessar..	f/6.3	15 15
4	Ordinary "Sibyl" ..	do.	Cooke	f/6.5	14 14
4A.	do. Roll Film..	do.	do.	f/6.5	15 15
5	Ordinary "Sibyl" ..	3 ¹ / ₂ " × 2 ¹ / ₂ "	Zeiss Tessar	f/6.3	10 10
5A.	do.	do.	Ross-Zeiss Tessar..	f/6.3	10 10
16	do. Roll Film..	do.	Zeiss Tessar	f/6.3	11 11
16B.	do. do. ..	do.	Ross-Zeiss Tessar..	f/6.3	11 11
6	Ordinary "Sibyl" ..	do.	Cooke	f/6.5	10 10
16A.	do. Roll Film..	do.	do.	f/6.5	11 11
7	Special "Sibyl" ..	do.	Zeiss Tessar	f 4.5	13 13
7A.	do.	do.	Ross-Zeiss Tessar..	f/4.5	13 13
15	do. Roll Film..	do.	Zeiss Tessar	f/4.5	14 14
15A.	do. do. ..	do.	Ross-Zeiss Tessar..	f/4.5	14 14
8	Imperial "Sibyl" ..	4 ¹ / ₄ " × 3 ¹ / ₄ "	Zeiss Tessar	f/6.3	16 16
8A.	do.	do.	Ross-Zeiss Tessar..	f/6.3	16 16
14	do. Roll Film..	do.	Zeiss Tessar	f/6.3	17 17
14A.	do. do. ..	do.	Ross-Zeiss Tessar..	f/6.3	17 17
9	Imperial "Sibyl" ..	do.	Cooke	f/6.5	16 16
14B.	do. Roll Film..	do.	do.	f/6.5	17 17
10	Postcard "Sibyl" ..	5 ¹ / ₂ " × 3 ¹ / ₂ "	Zeiss Tessar	f/6.3	21 0
10A.	do.	do.	Ross-Zeiss Tessar..	f/6.3	21 0
10B.	do. Roll Film..	do.	Zeiss Tessar	f/6.3	24 10
10C.	do. do. ..	do.	Ross-Zeiss Tessar..	f/6.3	24 10
11	Postcard "Sibyl" ..	do.	Zeiss Tessar	f/4.5	22 10
11A.	do.	do.	Ross-Zeiss Tessar..	f/4.5	22 10
11B.	do. Roll Film..	do.	Zeiss Tessar	f/4.5	26 0
11C.	do. do. ..	do.	Ross-Zeiss Tessar..	f/4.5	26 0
12	Stereoscopic "Sibyl"	do.	Pair Zeiss Tessars..	f/4.5	27 10
12A.	do.	do.	Pair R-Zeiss Tessars	f/4.5	27 10
12B.	do. Roll Film..	do.	Pair Zeiss Tessars..	f/4.5	31 0
12C.	do. do. ..	do.	Pair R-Zeiss Tessars	f/4.5	31 0

PRICES OF "SIBYL" SUNDRIES.

	4½ × 6 cm.	3½" × 2½"	4¼" × 3¼"	5½" × 3½"
	£ s. d.	£ s. d.	£ s. d.	£ s. d.
Extra Single Metal Slides in best Leather case, Nos. 7-12, 13-18, or 19-24	0 11 6	0 11 6	0 15 0	1 1 0
Special Morocco covered Film Pack Adapter	0 12 6	1 5 0	1 7 6	1 5 0
Changing Boxes for 12 Plates ..	—	2 15 0	3 0 0	4 4 0
do. do. 8 do. ..	—	2 12 6	2 17 6	—
Extra Dark Slides.. .. .	0 1 6	0 1 6	0 1 6	0 2 9
Focussing Screens with Hoods ..	(Without Hood) 0 4 6	0 4 6	0 5 6	0 7 6
Antinous Release with "N. & G." Fitting	0 4 0	0 7 6	0 7 6	0 7 6
"N. & G." Light Filters in Holders with Pocket case ..	0 10 6	0 10 6	0 10 6	0 12 6
Tripod Boards for Stand	—	0 3 6	0 3 6	—
"N. & G." Aluminium Stand in Leather Case	1 10 0	1 10 0	1 10 0	1 10 0
"N. & G." Lens Hoods (collapsible)	0 10 0	0 10 0	0 10 0	0 10 0
Best Leather Case to carry Camera and Slides, or Camera and Film Pack Adapter, from..	0 10 6	0 12 6	0 12 6	0 15 0
Premo Film Packs (12 expos) ..	0 1 2	0 1 8	0 3 0	0 3 3
Plates, "N. & G." Special Fine Grain, Special Rapid	0 0 8	0 1 0	0 1 6	0 2 6
do. do. do. (Backed)..	0 0 10	0 1 3	0 1 9	0 2 10
Roll Film Spools, Ensign or Kodak (12 expos.)	0 1 2	0 1 9	0 3 0	0 3 0

"N. & G." Special Pyro Soda Developer, per set of two Bottles Concentrated Solution, 1/6 and 2/6. Postage and Packing Inland, 9d. extra.

NEWMAN & GUARDIA, Ltd., 17 & 18, Rathbone Place,
Oxford Street, London, W.

The "N. & G." "TRELLIS" CAMERA.

THIS apparatus is of the Hand or Stand type, designed to give the fullest range of movements likely to be required for any description of photography. It is light, conveniently compact, and the latitude of its movements will accommodate a whole series of Lenses, from that of the shortest focal length made (for architectural subjects) up to the lens of 16 ins. or

17 ins. focal length, on the quarter-plate model. Large Aperture Lenses are also equally readily adapted, as, for instance, $f/4.5$ Tessar, $f/4.5$ Homocentric, $f/4.5$ Cooke, and $f/3.1$ Glaukar.

Extreme rigidity and parallelism of front with plate are again assured to users of this model by means of the Trellis or Lazy-tongs supports, and this at any bellows extension. The maximum of Rising Front necessary is also obtainable, either by raising the Front as a whole, or by using the quick and smooth movement of merely raising the Lens, which is fixed to a Sliding Friction Panel. In cases of extreme necessity, also,

both movements may be requisitioned, and an abnormal amount of Rise obtained. For all general purposes, however, the ever-ready Sliding Adjustment will be found to be ample. Where a wide-angle Lens is

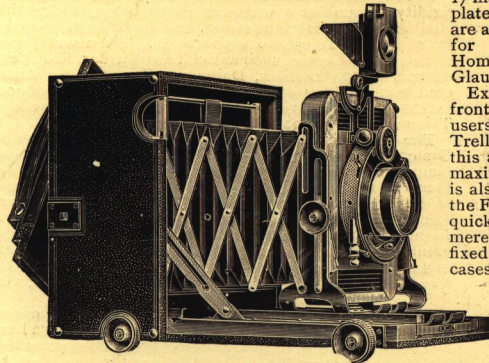


Fig. 1. EXTENDED FOR ORDINARY WORK.

being employed also, it will be found of immense advantage, because at this extension the folds of the bellows do not permit of the Front as a whole being raised.

These Cameras are supplied without Lens or Shutter, and any suitable form of Shutter can be fitted. A model is also made fitted with an "N. & G." Self-capping Focal Plane Shutter of new design, actuated on a gear principle, and in which no tapes are employed. The Shutter has Ball and Time movements also, and the Instantaneous speeds range from $\frac{1}{8}$ to $\frac{1}{500}$ sec. These speeds are regulated by width of slit in blind only, and not by variable tension, to which many objections are open. As this Shutter works very near the actual Focal Plane, the highest possible efficiency is obtained from it.

The form of revolving back employed is the same as that fitted to our Reflex Cameras, which a long experience has proved to be entirely satisfactory, and we can guarantee to be absolutely light-tight and of smooth action. It locks itself into the horizontal or vertical position by means of Spring Bolts.

Central Swing Front movement is given, which automatically re-centres itself into a position of parallelism with plate.

The Trellis Camera is eminently suitable for Autochrome work of any description, and, fitted with our Special Autochrome slide, it has no equal for this purpose. The Camera is also made to take Single, Double, or Mackenzie Wishart Slides, "N. & G." Changing Boxes (to hold eight or twelve plates), or a Film Pack Adapter, according to the requirements of individual clients.

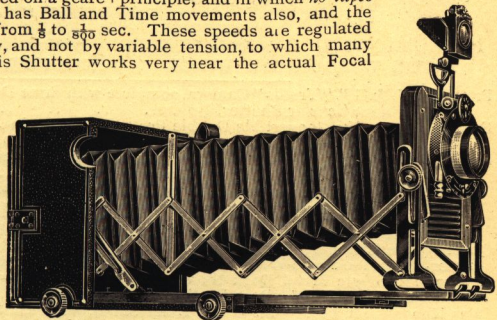


Fig. 2. SHOWING DOUBLE EXTENSION.

NEWMAN & GUARDIA, Ltd., 17 & 18, Rathbone Place, Oxford Street, London, W.

The "N. & G." "Trellis" Camera.—Continued.

The Patent "N. & G." Folding Reflector Finder is fitted, showing the actual rise of Front given on plate.

All scale markings are accurately engraved according to test distance readings taken through lens to be fitted, and may be confidently relied upon when not using focussing screen, or when the Camera is being used in the hand.

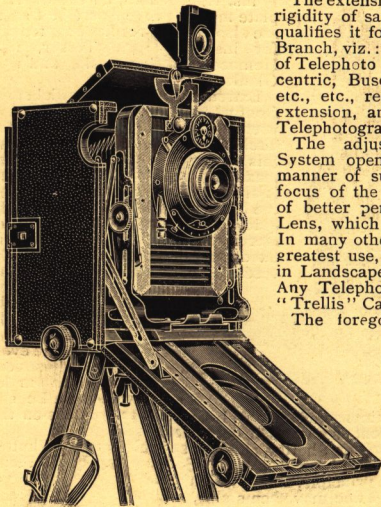


Fig. 1. SHOWING CAMERA OPENED FOR WIDE ANGLE WORK.

The extension available on this Camera, and the extreme rigidity of same as a whole, at all positions, thoroughly qualifies it for that interesting, and increasingly popular Branch, viz.: Telephotographic work. The newest forms of Telephoto Lenses, such as the Zeiss Magnar, Ross Telecentric, Busch Bistelar, Dallmeyer $f/4.5$, or $f/6.3$ Adon, etc., etc., require only a reasonable amount of camera extension, and work at large apertures, thus making Telephotography possible with a Hand Camera.

The adjustable focus of a complete Telephoto System opens a wide range of possibilities with all manner of subjects to the user. The Long Equivalent focus of the new Telephoto Lens results in a picture of better perspective than that given by the ordinary Lens, which is a feature of great value in Portraiture. In many other directions, also, these Lenses are of the greatest use, giving a magnified image of distant objects in Landscape, or distant Architectural Details, etc., etc. Any Telephoto system can be fitted to the "N. & G." "Trellis" Camera.

The foregoing facts clearly demonstrate the general utility of this perfect apparatus, and we have no hesitation in confidently recommending it as THE CAMERA for the best class of work among a very wide range of subjects. At the same time, although so serviceably equipped, its movements will be found entirely simple and direct in manipulation and such as can be easily mastered by all who elect to employ it.

The Photographer will find the "Trellis" contains EVERYTHING Necessary, and NOTHING Superfluous.

Price of "N. & G." "Trellis" Camera, complete with three Double Dark Slides, but without Lens or Shutter, $\frac{1}{4}$ -plate.	£	s.	d.
Extra for Zeiss $f/6.3$ Convertible Double Protar Lens of 5 ins. and $8\frac{3}{4}$ ins. focus, mounted in Compound Shutter, and including fitting to Camera	10	10	0
Extra for Zeiss $f/4.5$ Tessar Lens of $5\frac{1}{2}$ ins. focus, mounted in Compound Shutter, and including fitting to Camera	9	10	0
Or Camera can be fitted with customer's own Lens and Shutter.	7	10	0

SUNDRIES FOR "TRELLIS" CAMERA.

Quarter-plate Double Dark Slides, 15s. each; Quarter-plate Film Pack Adapter, 30s.; Quarter-plate Changing Box, 12 plates, £3; Quarter-plate Changing Box, 8 plates, £2 15s. Quarter-plate Mackenzie-Wishart Slides, complete with 12 Envelopes, 50s.; Quarter-plate Adapter for Single Metal Dark Slides, "Sibyl," 25s.; Extra for "N. & G." Self-capping Focal Plane Shutter, £5; Best Leather Cases for Camera Sats from £1 1s.; "N. & G." Lens Hoods from 10s.; "N. & G." Eiffel Stand, very rigid, complete with "N. & G." Screw and Waterproof Cover, No. 2A, £1 8s. 6d.; No. 2B, Heavier, £1 13s. 6d.

	£	s.	d.
Zeiss Magnar Telephoto Lens $f/10$	10	0	0
New Ross Telecentric Lens $f/5.4$	8	5	0 upwards.
New Ross Telecentric Lens $f/6.8$	6	0	0 upwards.
Staley-Wheeler Convertible Telephoto Lens	6	6	0
Busch Bis-Telar Telephoto Lens, $f/7$	3	0	0 upwards.
Dallmeyer Adon Telephoto Lens $f/6.4$	6	6	0
New Dallmeyer Adon Telephoto Lens $f/4.5$	9	9	0

NEWMAN & GUARDIA, Ltd., 17 & 18, Rathbone Place, Oxford Street, London, W.

The "N. & G." UNIVERSAL CAMERA

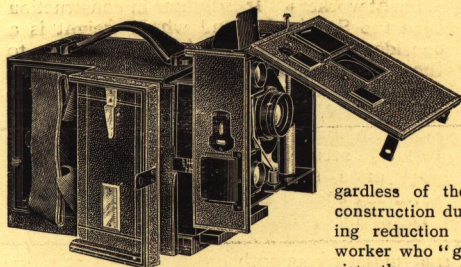
Special B. Pattern.

FOR HAND AND TRIPOD WORK.

This Camera enjoys an unique distinction!

It has retained the confidence and appreciation of its many users throughout a period of **TWENTY YEARS**, and re-

gardless of the many evolutions in cameral construction during that period, and the resulting reduction in size and weight, the ardent worker who "goes" for the ultimate result, consistently uses and recommends this pattern as the **Camera "Par excellence"** for general subjects. It is the ideal Camera for Travellers, and will withstand the roughest usage. A



OPENED, TO SHOW FITTINGS
AND MOVEMENTS.

favourite with Army and Navy men. Was the Camera used by Sir Ernest Shackleton and by Captain Scott in the Southern Polar Regions.

Fitted with the celebrated "N. & G." **Special B. Shutter**, giving speed from $\frac{1}{2}$ second, to 1-root part second, with the reliable Pneumatic Regulation control.

Accurately marked distance scale Indexes, for both combinations of Lens.

Changing Boxes, for 12 Glass Plates, or 12, or 24, Cut Films, detachable and interchangeable with Double Dark Slides.

Full Front Rise (quarter the length or width of plate).

Full Double Extension.

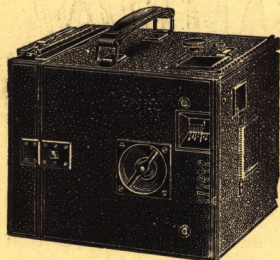
It is made from Start to Finish, under direct supervision, at our Works, and is unrivalled in excellence of Finish.

PRICES.

SPECIAL PATTERN B.

	$\frac{1}{4}$ Plate.	5×4 or 9×12 c.m.	$5\frac{1}{2} \times 3\frac{1}{2}$ Postcard.	$\frac{1}{2}$ Plate.
With Zeiss Series VII D.P. Lens, complete with Changing Box, for 12 plates or 24 films	£22 10 0	£26 0 0	£28 0 0	£32 0 0
Without Lens, but including cost of fitting suitable Lens, and complete with Changing Box and Focussing Screen.. ..	£15 5 0	£17 5 0	£19 15 0	£21 5 0
Double Dark Slides	£0 17 6	£1 1 0		
Set of 3 Slides and Adapter.	£1 5 0	£2 15 0		
Changing Boxes	£2 5 0	£2 15 0	£3 15 0	£3 15
Autochrome Dark Slides ..	£1 10 0	£1 10 0	£1 15 0	£2 0 0
Strong Velvet-Lined Leather Cases	from £1 1 0 upwards.			

The "N. & G." UNIVERSAL DE LUXE CAMERA.



Closed, as carried ready for work.

Changing Box, Single Metal Dark Slide, Double Dark Slide, or Film Pack Adapter.

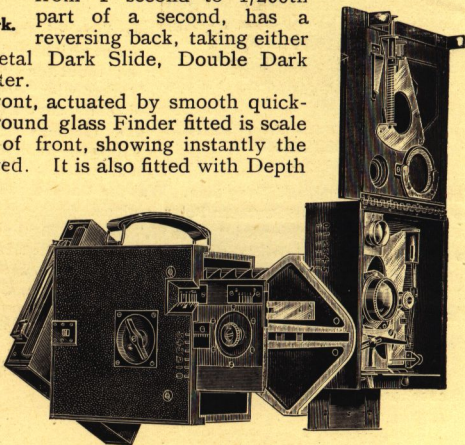
It has a great rise of front, actuated by smooth quick-running screw, and the ground glass Finder fitted is scale marked in relation to rise of front, showing instantly the exact amount of rise required. It is also fitted with Depth of Field Index.

The Lens recommended and fitted is the Zeiss Series VII. Double Protar, giving 2 foci, and allowing the greatest advantage of the long extension given. The instrument is further adaptable for telephoto and wide angle work.

An enviable apparatus, ever ready and simple to use, it is, to the expert and beginner alike, a medium to obtain the most sought-after results.

This instrument embodies many improvements and refinements on the regular Universal Special B. Pattern, and is highly appreciated and regularly used by many eminent workers. It is lighter in construction than the Special B., and where weight is a consideration offers special inducements to those who admire this type.

The "De Luxe" is fitted with the renowned "N. & G." High Precision Shutter, giving a range of speeds from 1 second to 1/200th part of a second, has a reversing back, taking either



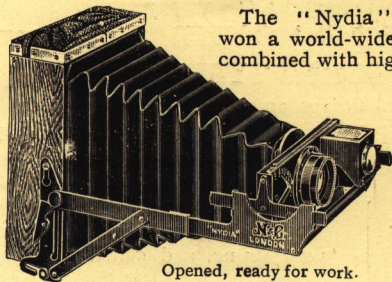
Opened, to show Fittings and Movements.

PRICES:

$\frac{1}{4}$ plate size, fitted with Zeiss Series VII. Double Protar Lens, giving 2 foci, Open Back Pattern , with any plate or film changing device	£30 0 0
$\frac{1}{4}$ plate size, fitted with Zeiss Series VII. Double Protar Lens, giving 2 foci, Closed Back Pattern , with either 8 or 12 plate Changing Box, and Focussing Screen	£32 0 0
Weight	Open Back Pattern. 2 lbs. 14 ozs. Closed Back Pattern. 4 $\frac{1}{2}$ lbs.
Measurements	6 $\frac{3}{4}$ x 5 $\frac{1}{4}$ x 5 $\frac{1}{4}$ ins. 8 $\frac{1}{4}$ x 5 $\frac{1}{4}$ x 5 $\frac{1}{4}$ ins.
Maximum Extension	11 ins. 11 ins.

NEWMAN & GUARDIA, Ltd., 17 & 18, Rathbone Place, Oxford Street, London, W.

The "NYDIA" FOLDING CAMERA



Opened, ready for work.

The "Nydia" is an old favourite which has won a world-wide reputation for extreme lightness combined with high efficiency.

It differs from all other folding Magazine Cameras, being neat and small without sacrificing either the quality of its parts or its general reliability as a whole.

The workmanship and finish in every detail is fully up to the "N. & G." standard, the low price for so complete an instrument being due to its

ever-increasing popularity.

The "Nydia" is the smallest Folding Magazine Camera obtainable.

Prices of "Nydia" Cameras.

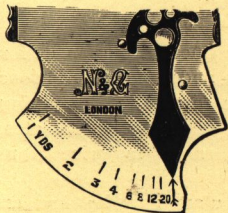
Complete with Changing Box and Leather Case.

- | | | |
|---|------------|------------|
| | 1/2-plate. | 1/2-plate. |
| 1. With Aldis <i>f</i> /7.7 Anastigmat Lens | £7 15 0 | — |
| 2. With Ross <i>f</i> /6.3 "Homocentric" Lens | £9 9 0 | £18 18 0 |
| 2S. With two accurately paired Ross <i>f</i> /6.3 "Homocentric" Lenses. | | |
| Stereoscopic | — | £19 19 0 |
- (Cases of Nos 2 and 2S Velvet-lined and fitted with Cycle Straps.)

Reduced Price.—No. 2 Camera has been reduced from £10 10 0.

Prices of "Nydia" Sundries.

- | | | |
|---|---------|----------------------------------|
| Changing Boxes, Form 1, for 8 Plates, or 8 Cut Films, or Form 2, for 12 Cut Films | £2 15 0 | Folded for carrying in its Case. |
| Changing Boxes, Form 1, for 12 Plates, or 12 Cut Films, or Form 2, for 24 Cut Films | £3 10 0 | |
| Special Film-Pack Adapter, for Daylight Loading | £1 10 0 | |
| Dark Slide Attachment, containing 3 Single Metal Slides for Plates, and Focusing Screen | £2 15 0 | |



THE "N. & G." TELEMETER OR DISTANCE FINDER.

This instrument will be found most useful for measuring the distance of objects from Camera up to infinity.

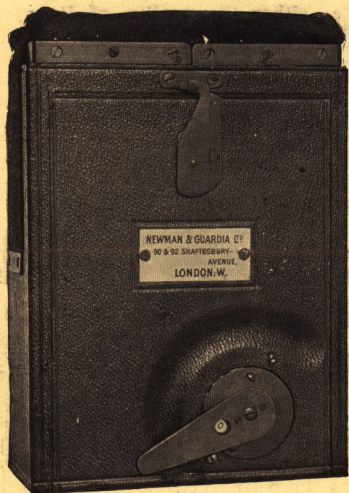
Price 1s. 6d. complete in leather pocket case.

NEWMAN & GUARDIA, Ltd., 17 & 18, Rathbone Place, Oxford Street, London, W.

“N. & G.” CHANGING BOXES

are made for ALL “N. & G.” CAMERAS, and can be FITTED TO MANY OTHER TYPES AS WELL.

These boxes are made in several fittings and sizes, the most popular of which is illustrated here. They are made of the best seasoned mahogany covered in hard grain Morocco Leather; all joints being tongued and grooved the boxes are very strong, and suited to every climate.



Anything of a complex nature in design has been studiously avoided, with the result that the Box is thoroughly dependable and satisfactory. This is undoubtedly the most convenient and expeditious method of changing at present in use. The plate is raised from the back of Box by lever, into Leather Bag at top, lifted over to front of Box, and pressed down into register ready for exposure. The Box as illustrated is the type as fitted to all “Sibyls,” “Reflexes,”

Universal de Luxe, and “Trellis” Cameras.

PRICES.

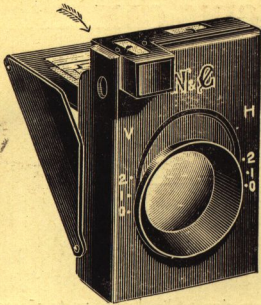
$3\frac{1}{2} \times 2\frac{1}{2}$ $\frac{1}{4}$ plate 5×4 $5\frac{1}{2} \times 3\frac{1}{2}$ $\frac{1}{2}$ plate
 £2 15 0 £3 0 0 £3 10 0 postcard £4 4 0 £4 15 0

FIELD GLASSES.

Zeiss or Ross Field Glasses always in stock. The finest glasses made for all uses, either in the mountains, open country, at sea, and for all descriptions of Sport or Sightseeing. These glasses are made in several models giving various magnifying powers, to suit the requirements of particular climates, and conditions of light, and atmosphere. They range in price from **£5 5s.** upwards.

The best advice on selecting and fullest particulars may be had on application.

NEWMAN & GUARDIA, Ltd., 17 & 18, Rathbone Place, Oxford Street, London, W.



The "N. & G." FOLDING REFLECTOR FINDER.

This Finder can be fitted to many types of Folding Cameras. By depressing the Ground Glass the Finder will fold into very compact space inside the Camera. It has a sliding Lens accurately marked horizontally and vertically to show the exact amount of Rising Front necessary, and as will be obtained on plate by raising Lens correspondingly.

Price complete in best leather pocket case :

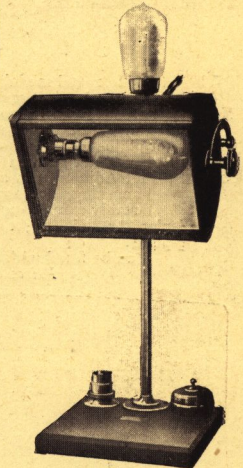
20/-

Cost of fitting to Camera extra.

The "N. & G." "SUPERB" ELECTRIC DARK ROOM LAMP.

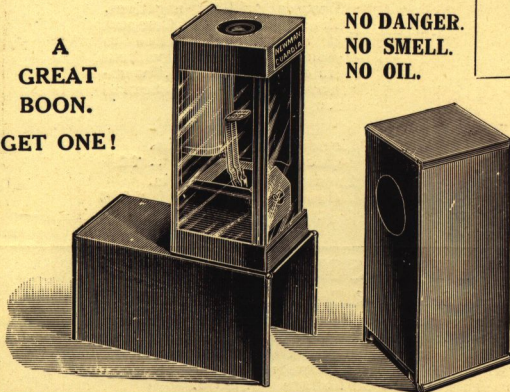
This Lamp, being designed to take any form of Safelight, gives the maximum amount of light without fear of fogged negatives, fitted with convenient adjustments, allowing light reflection to any desired angle—or height—from work in hand. It has a bothways switch. One contact illuminates Safelight and the other an outside white light, which is extremely useful for Bromide printing. It also makes an excellent Reading Lamp when Safelight is removed.

Price complete with one Safelight £1 15 0



The "N. & G." METAL FOLDING TRAVELLING LAMP.

A
GREAT
BOON.
GET ONE!



NO DANGER.
NO SMELL.
NO OIL.

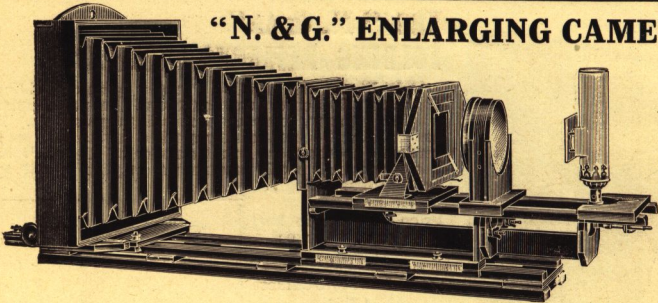
Burns solid paraffin wax. Is the most convenient and portable lamp obtainable for travellers.

Price complete with one packet of Paraffin tablets (50 hours) .. 10/-

Extra box Paraffin Tablets (100 hours), 1/6

NEWMAN & GUARDIA, Ltd., 17 & 18, Rathbone Place, Oxford Street, London, W.

"N. & G." ENLARGING CAMERAS.



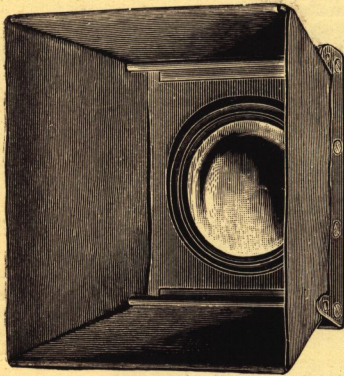
The latest improved model takes any negative up to $\frac{1}{2}$ -plate size, and enlarges up to 15×12 . Adjusted for enlarging any small portion of a negative up to full size when required. Negative may be swung to correct diverging lines.

Lateral and Vertical adjustment for centring negative. The Dark Slide is designed to take either plates (for enlarged negatives), or Bromide Papers.

Price of Enlarger complete, as above	£13 10 0
Special Adjustments allowing complete control of Negative, Light, Focussing, and arrangement of subject on Screen, to be comfortably carried out from Screen end of Camera extra	£7 10 0
$\frac{1}{4}$ -plate Artificial Light Attachment, Condenser, etc.	£4 4 0
$\frac{1}{2}$ -plate do. do. do. do.	£7 7 0

(Can be fitted with Nernst, Incandescent, or Spirit Lamps.)

Prices of Smaller Folding Types on Application.



(REGISTERED DESIGN.)

The "N. & G." FOLDING LENS HOOD.

Should be used by every
photographer.

Ensures brilliant negatives, with no signs of flare. Compact and efficient, and fitted to customers' own Lenses without extra charge. "N. & G." workmanship and material throughout.

Price.

Lenses up to $1\frac{1}{2}$ in. diameter	10/-
Lenses from $1\frac{1}{2}$ in. to $2\frac{1}{2}$ in. diameter	12/6

Special Sizes to Order.



CLOSED.

"N. & G." PYRO SODA DEVELOPER.

The Best for Hand Camera Exposures.

Made up to our own special Formula, produces negatives of a warm brown tone, which have the best printing qualities. It develops the best possible from High Speed exposures. Made up in two solutions it will retain its energy and keep indefinitely.

Price **1/6** (small), **2/6** (large) set of two rubber-stoppered bottles,

Packing and Inland Postage, 9d. extra.

NEWMAN & GUARDIA, Ltd., 17 & 18, Rathbone Place, Oxford Street, London, W.

"N. & G." Developing, Printing and Enlarging Department.

This Department is a speciality, and under the charge of an expert. Printing and Developing orders entrusted to our care will receive most careful treatment in order to obtain the best results.

Practical advice as to most suitable printing process for any negative may always be had, and also regarding mounting and framing.

Orders executed with greatest possible promptitude.

Owing to greater facilities and extension in this department, we have much pleasure in drawing attention to the following **REDUCED PRICES.**

PRICES.—Developing and Printing, <u>per Dozen.</u>						Prices <u>each.</u>			
Size.	Developing Plates, Films or Roll Films.	P. O. P.	Bromide and Gaslight Matt or Glossy.	Platinotype.	Mounted Best Sunk Mounts or Art Paper extra.	Bromide Enlargements from any size Negative.			
						Size.	Unmounted each.	Sepia Toned each.	Mounted best Sunk Mounts each extra.
4½ x 6 cm.	2/-	1/6	2/-	3/-	1/6	6½ x 4¾	1/-	1/4	1/-
3½ x 2½	2/6	2/-	2/6	3/-	1/6	8½ x 6½	1/6	2/-	1/-
4¼ x 3¼	3/-	2/6	3/-	4/6	2/-	10 x 8	2/-	2/8	2/-
5 x 4	3/6	3/-	4/-	5/6	2/6	12 x 7½	2/6	3/4	2/-
5½ x 3½	3/6	3/-	4/-	5/6	2/6	12 x 10	2/6	3/4	2/-
6½ x 4¾	4/6	4/6	5/-	7/-	4/6	15 x 12	3/-	4/-	2/-
7 x 5	4/6	5/-	5/6	7/6	6/-	17 x 10½	3/6	4/6	2/3
8 x 6½	6/-	8/-	9/-	11/-	7/6	18 x 15	4/-	5/4	2/6

AUTOCHROME PLATES AND SUNDRIES FOR LUMIERE NATURAL COLOUR PHOTOGRAPHY.

The process is quite a simple one, and there is no reason why it should not be practised by all. The transparencies obtained are very beautiful, and positively natural in colour.

PRICES. AUTOCHROME PLATES.

$3\frac{1}{4} \times 3\frac{1}{4}$, 2/6; $4\frac{1}{2} \times 3\frac{1}{4}$, 3/-; 5×4 , 4/6; $5\frac{1}{2} \times 3\frac{1}{2}$, 4/6; $6\frac{1}{2} \times 4\frac{3}{8}$, 7/6; $6\frac{3}{4} \times 3\frac{1}{4}$, 6/-; $8\frac{1}{2} \times 6\frac{1}{2}$, 14/-; $\times 12$ cm., 3/-; 13×18 cm., 7/6; 18×24 cm., 14/-; and 45×107 mm., 2/- per box of four plates.

TAKING SCREENS (absolutely necessary).

$1\frac{3}{16} \times 1\frac{3}{16}$, 3/-; $1\frac{3}{8} \times 1\frac{3}{8}$, 4/-; $2\frac{3}{8} \times 2\frac{3}{8}$, 5/-; $3\frac{3}{16} \times 3\frac{3}{16}$, 7/6; and $4\frac{3}{8} \times 4\frac{3}{8}$, 12/-.

All Chemicals necessary for this process kept in stock.

AUTOCHROME PLATE DEVELOPMENT.

Special care given to this work, also binding and finishing same.

Prices, any size up to half-plate, developing only, 1 6 each. Binding 6d. each extra.

SUNDRIES.

The **JOHNSON PATENT CRUSHMETER** for quickly dissolving Tabloid Preparations (Crystals, etc. It consists of four-ounce graduated measure and glass pestle or crusher. Price complete, 2/-.

"N. & G." "CLIMAX" CHANGING TENT.

Invaluable to all Photographers, and especially travellers. It is light, strong, and three-fold in thickness. Folds into very small space. Can be fitted with any form of safe-light. No. 1 size, weight three pounds, £1 1s. No. 2 size, weight four pounds, £1 5s.

"N. & G." **ECLIPSE CHANGING BAG**, very light and portable, will roll up into smallest space, and enables plate changing anywhere, without resort to dark room. Price, quarter-plate, 10/6; half-plate, 12/6.

FOCUSsing GLASSES, Indispensable for accurate focussing, examining negatives, etc. In brass mount, 5/6. In nickle mount, 6/6.

"N. & G." **SPIRIT LEVELS**, best quality, 3/6. "N. & G." Nydia Folding T-shaped levels with two bobbies, 4/6. Circular levels, 1/-.

"N. & G." **PHLATT MOUNTANT**, supplied in large collapsible metal tubes at 1/- each. Post free 1/2. No better mountant made, prints dry flat, and give no buckling trouble.

GL'SS MEASURES, and all Dark Room Accessories, Chemicals, etc., supplied at Standard prices.

SPECIAL "N. & G." TOURIST'S FABRIC DARK ROOM FOLDING LAMP
2s. 6d., complete with four Wax Lights.

NEWMAN & GUARDIA, Ltd., 17 & 18, Rathbone Place,
Oxford Street, London, W.