

The background of the entire page is a dense, light-colored speckle pattern. Scattered across this background are numerous dark green holly leaves and clusters of small red berries. The leaves are pointed and have serrated edges, while the berries are small and round, often appearing in groups of three or four.

KODAKS

For Christmas

Its Chiefest Charm

AMATEUR PHOTOGRAPHY means more than it once did. Each year the field broadens—each twelve months of development removes some limitation that has been a hindrance and an annoyance to the amateur. Picture-taking is now an all-the-year-round joy. Kodaking fits bleak November, the merry Christmas-tide and blustery midwinter as well as the softer summer season.

For out-door winter work the Kodak has special qualifications. It can be loaded for the day's outing in the warmth of the house, and all of the out-door work may be accomplished with heavily gloved hands. Kodak films, on account of their non-halation qualities, are particularly adapted to winter landscape work, giving clean-cut definition of naked tree limbs outlined against sky or snow, where, owing to the light reflected from its back, an ordinary glass plate would give a most disagreeable blur. Films are superior, too, in the rendering of cloud effects and in portraying the true color values of the landscape. An expert says of them: "They have markedly orthochromatic qualities."

For work at home—and therein lies the chiefest charm of Kodakery—the Kodak meets every requirement. Kodak film is particularly adapted to home portraiture. Glass plates are made to suit the conditions which prevail under the soft and

well regulated skylight in the professional photographer's gallery. Owing to their non-halation qualities, Kodak films are peculiarly adapted to work under the harsher light found in the improvised studio of the amateur. This quality helps to equalize the too abundant contrast between shadow and high light—makes better negatives than can be obtained with glass under similar conditions.

So much for film quality. As to film convenience? One can load his Kodak—in-daylight—with non-breakable film cartridges for two, four, six or twelve exposures in the $3\frac{1}{2} \times 3\frac{1}{2}$, $3\frac{1}{4} \times 4\frac{1}{4}$, 4×5 and 5×7 sizes. In the smaller sizes cartridges are not made for less than six exposures. Kodak cartridges weigh but ounces where plates weigh pounds, and they do away with all necessity for holders and dark slides.

Not only in the film quality and convenience are Kodaks particularly adapted to winter work, but in lens and shutter they meet every requirement. The Kodak Portrait Attachments for the small, fixed focus instruments give them a wonderful range in portraiture. These attachments are simply extra lenses which slip on over the regular lens and by means of which the Kodak may be used at a distance of only three and one-half feet from the subject, with the result that bust photos equaling in size those of an ordinary mantello photograph may be made with the small, fixed focus Kodaks. The larger Kodaks, those made for focusing, require, of course, no such attachment. All Kodak shutters (except the Panoram) are equally adapted to time and instantaneous exposures and have suitable diaphragms for regulating the size of the stop opening. All of the lenses used in our instruments are carefully tested by our inspector, thus insuring uniform excellence. In every

camera that we produce, the first aim is an instrument that will increase its owner's interest in and enthusiasm for photography. This end can only be obtained by perfection in every detail, and such perfection is, therefore, our only standard.

Explicit instructions, in good, plain English and fully illustrated, accompany each camera. Technical terms are avoided in these manuals, but they tell how to load, how to make snapshots, time exposures and flash-lights, and how to develop and print with an inexpensive outfit.

Thus, by simplifying the camera, by furnishing materials that are adapted to the use of the amateur, and by explaining the use of camera and materials in terms that anyone can understand, we extend the witchery of Kodakery until it covers the winter as well as the summer months. It is not a mere summer fancy, but, for those who once have felt its spell, is an all-the-year-round delight.

And for him who Kodaks, no days are more filled with interest than those of the merry Christmas-tide. The holiday house party ; the family Christmas tree, resplendent with the glittering tinsel that delights the younger hearts ; the sleighing parties ; the frozen lake, with the gay and swaying crowd of light-hearted skaters ; the bare-limbed trees, heavy laden with the last wet snow—in every one of these are pictures worthy of the camera, pictures which have an artistic side and are filled with a strong personal interest. The fortunate one who receives a Kodak as a Christmas gift needs not to wait for the summer season ere putting it to use. The witchery of Kodakery knows no season—in every month it now prevails.

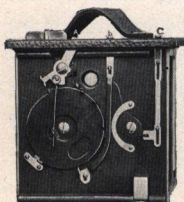
EASTMAN KODAK CO.

Rochester, N. Y.

SHUTTERS.



Three styles of shutters are used in the Kodaks of regular equipment. None of them are an experiment. All of them are made with the utmost care and each one is given a careful and practical test in actual operation.



Eastman's Rotary Shutter.

Used on the No. 2 and No. 4 Bulls-Eye, No. 2 Folding Bulls-Eye, No. 2 Bullet and No. 2 Flexo Kodaks, on the No. 2 Brownie Camera and (with one stop) on the No. 1 Brownie.

It is always set. Snap-shots are made by simply pushing the lever "A" alternately to the right or left, thus revolving the metal disc and making the exposure as the opening in disc passes the lens.

For time exposures pull up the slide "B" and then push the lever "A" in one direction to open and in the opposite direction to close the shutter. It will be seen that when the slide "B" is pulled out the shutter strikes as it passes the lens, stopping half way across with the opening over the lens.

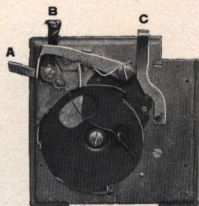
The lever "C" controls the stops, of which there are three. An ideal shutter for the hand camera.

The Eastman Automatic Shutter.

Used on all Folding Pocket Kodaks.

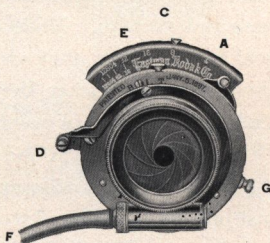
To make a snap-shot: Press down lever "B." To make a time exposure: Press down lever "A" once to open and again to close the shutter. That's all there is to operating the Eastman Automatic Shutter. It is always set. A simple and perfect shutter.

The lever "C" operates the stops, of which there are three.



Eastman Triple Action Shutter.

Fitted to the Cartridge Kodaks and Bullet and Bulls-Eye Special Kodaks. On the No. 2 Bullet Special and the Bulls-Eye Specials it is operated by lever only—not by bulb.



For snap-shots place lever "E" at point "I" and set shutter by turning lever "A" to left to limit of motion. Expose by pressing bulb attached to tube "F" or by touching release "D." There are three speeds for instantaneous exposures, which are regulated by moving the lever "G."

For time exposures place lever "E" at point "T" and set shutter by turning lever "A" to left to limit of motion. Press bulb (or release "D") once to open and again to close shutter.

For short time exposure place lever "E" at "B" and set shutter by moving "A" to left to limit of motion. Press bulb (or finger release D) to open shutter and release it to close shutter. The shutter remains open as long as the bulb remains under pressure and closes the instant it is released.

The stops are operated by moving lever "C" and range from U. S. 4 to U. S. 128.

FOLDING POCKET KODAKS.

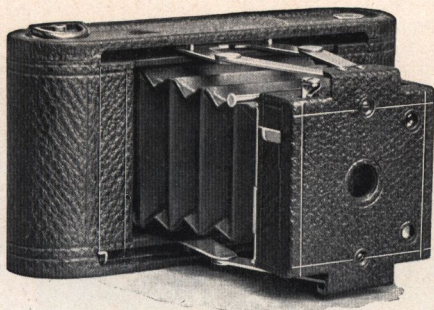


In the Folding Pocket Kodaks the film Cartridge system has been adapted to instruments of marvelous compactness, lightness and strength. Made of aluminum, and covered with fine, seal grain leather, they are practically weather-proof. Though they go in the pocket, they have the scope of cameras of triple their bulk, and are in every respect complete and perfect.

The No. 1, No. 1 A and No. 2 Folding Pocket Kodaks have the finest meniscus achromatic lenses with set focus. The No. 3 instruments have Rapid Rectilinear lenses equipped with focusing device. All of the lenses used in these instruments are perfectly adapted to the work for which they are intended, and each one is given a microscopic test by our own inspector before being accepted.

The Folding Pocket Kodaks are fitted with the Eastman Automatic Shutter, described on page 5. They have sets of three stops, brilliant finders and handsomely nickeled fittings. The Nos. 2 and 3 have socket for tripod screw

**Folding
Pocket
Kodaks
No. 1 and
No. 1 A.**



Folding Pocket Kodak No. 1.

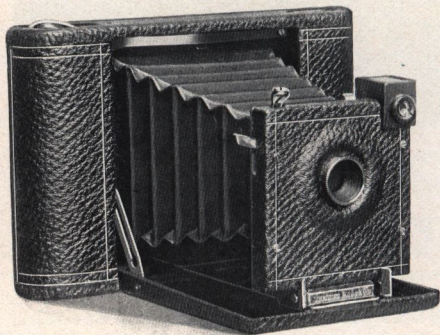
For rectangular pictures, $2\frac{1}{4} \times 3\frac{3}{4}$ inches; capacity, 12 exposures without reloading; size of Kodak, $1\frac{1}{8} \times 3\frac{1}{2} \times 6\frac{1}{4}$ inches; weight, 15 ounces; length of focus of lens, 4 inches.

No. 1 Folding Pocket Kodak, with achromatic lens, not loaded,	\$10.00
Transparent Film Cartridge, 12 exposures, $2\frac{1}{4} \times 3\frac{3}{4}$,	.40
Do., 6 exposures,	.20
Kodak Portrait Attachment,	.50
Black Sole Leather Carrying Case,	1.25

Folding Pocket Kodak No. 1 A.

For rectangular pictures, $2\frac{1}{2} \times 4\frac{1}{4}$ inches; capacity, 12 exposures without reloading; size of Kodak, $1\frac{3}{4} \times 3\frac{3}{8} \times 7\frac{7}{8}$ inches; weight, 18 ounces; length of focus of lens, 5 inches.

Folding Pocket Kodak No. 1 A, with achromatic lens, not loaded,	\$12.00
Transparent Film Cartridge, 12 exposures, $2\frac{1}{2} \times 4\frac{1}{4}$,	.50
Do., 6 exposures,	.25
Kodak Portrait Attachment,	.50
Black Sole Leather Carrying Case,	1.25

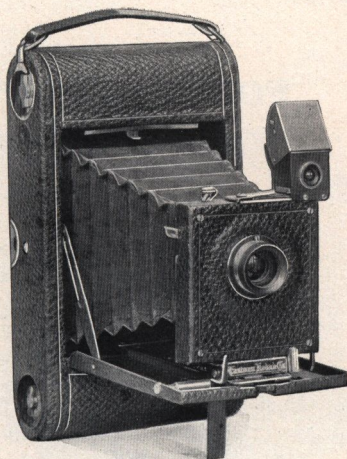


**No. 2
Folding
Pocket
Kodak.**

For square pictures, $3\frac{1}{2} \times 3\frac{1}{2}$ inches; capacity, 12 exposures without reloading; size of Kodak, $1\frac{1}{2} \times 4\frac{1}{2} \times 6\frac{3}{4}$ inches; weight, 17 ounces; length of focus of lens, $4\frac{1}{2}$ inches.

No. 2 Folding Pocket Kodak, with achromatic lens, not loaded,	.	.	.	\$15.00
Transparent Film Cartridge, 12 exposures, $3\frac{1}{2} \times 3\frac{1}{2}$,60
Do., 6 exposures,30
Do., "Double-Two" Cartridge (4 exposures),20
Kodak Portrait Attachment,50
Black Sole Leather Carrying Case,	.	.	.	1.25

No. 3 Folding Pocket Kodak



For rectangular pictures, $3\frac{1}{4} \times 4\frac{1}{4}$ inches; capacity, 12 exposures without reloading; size of camera, $1\frac{3}{8} \times 4\frac{1}{2} \times 7\frac{1}{2}$ inches: weight, 22 ounces; length of focus of lens, 5 inches.

*No. 3 Folding Pocket Kodak, with rapid rectilinear lens (not loaded),	\$17.50
Transparent Film Cartridge, 12 exposures, $3\frac{1}{4} \times 4\frac{1}{4}$,70
Do., 6 exposures,35
Do., "Double-Two" Cartridge (4 exposures),25
Kodak Portrait Attachment,50
Black Sole Leather Carrying Case, with shoulder strap,	1.25

*This Kodak can be furnished with a Bausch & Lomb Plastigmat lens and with Pneumatic shutter. See "Special Lens and Shutter Equipments," page 30. See also pages 10 and 11.

FOLDING POCKET KODAK DE LUXE NO. 3.



The perfect pocket camera—perfect in construction, in lens, in shutter and in finish, such is the No. 3 Folding Pocket Kodak de Luxe. In principle of construction these instruments are the same as the No. 3 Folding Pocket Kodaks described on pages 6 and 9. In finish and equipment they leave nothing to be desired.

Equipped with the famous Bausch and Lomb Plastigmat lenses, which are the very embodiment of optical perfection, these cameras have a power which permits of practical snapshot work under conditions which were once considered impossible. These lenses are the very highest product of the lens makers' science. Technically speaking, they have an equivalent focus of 5 inches, a speed of $f. 6.8$ and are strictly anastigmatic.

The B. & L. Automatic shutter with which these instruments are equipped is in perfect keeping with the superb quality of the lens. It is always set and is operated by a pressure of the bulb or by touching the trigger. It gives automatic exposures from $\frac{1}{100}$ of a second to one second; it has the "bulb" exposure by which the shutter opens when the bulb is pressed and closes when the pressure is released and has the time action, one pressure of the bulb opening and another pressure closing the shutter. It is fitted with iris diaphragm stops with scale for openings Nos. 3, 4, 8, 16, 32, 64 and 128.

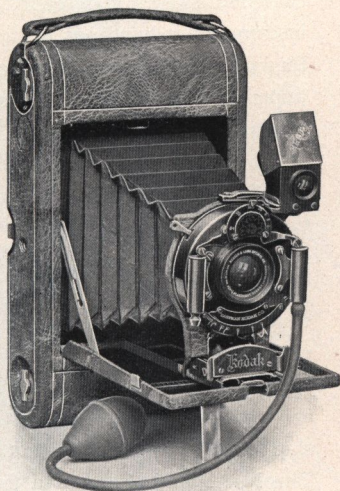
"Richness without gaudy display" best describes the finish of these instruments. Though removed from the conventional

black, their appearance is refined and inconspicuous. The covering is of selected Persian Morocco, a leather with a beautiful natural pattern in soft brown tints shading off into creamy yellow with here and there just a suggestion of sage green. The bellows are covered with brown silk and the exposed metal parts are of the finest nickel finish and brass and on each instrument is a solid silver name plate.

With each of these Kodaks we furnish also a hand sewed carrying case of Persian Morocco with silver trimmings.

No. 3 Folding Pocket Kodak de Luxe.

The Folding Pocket Kodak de Luxe combines the finest mechanical and optical qualities with a richness of design and finish that immediately distinguishes it as in every respect a superior instrument.



No. 3 Folding Pocket Kodak de Luxe, with No. 1 Plastigmat lens,			
B. & L. Automatic Shutter with Carrying Case, (not loaded),			\$75.00
Transparent Film Cartridge, 12 exposures, $3\frac{1}{4} \times 4\frac{1}{4}$,	.	.	.70
Do., 6 exposures,35
Do., "Double-Two" Cartridge (4 exposures),25

BULLS-EYE KODAKS.

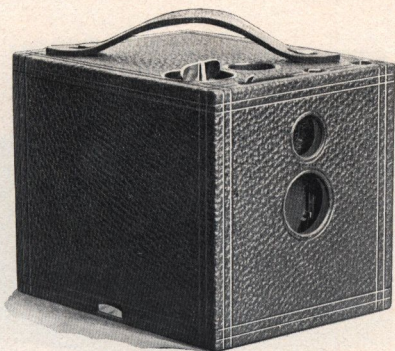


These were the original daylight loading Cartridge system cameras, and through their very simplicity are still the ideal instrument for hundreds of thousands of amateurs who prefer the box to the folding form of camera. Since the earlier models improvements have, of course, been steadily made, but the original idea—simplicity—has been maintained.

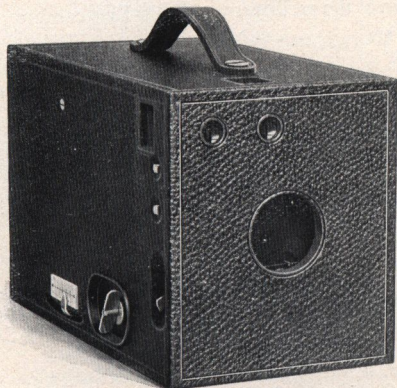
To the perfection of the Bulls-Eye lenses as well as to the simplicity of the camera is due in large measure the long continued popularity of these instruments. Our system of lens selection insures perfect optical qualities in every instrument. The Bulls-Eye Kodaks are equipped with the Eastman Rotary shutter described in detail on page 4, they have sets of three stops, sockets for tripod screws, brilliant finders, are covered with fine seal grain leather and have full nickel fittings. They are instantly ready for use, are perfect in design and workmanship and are in every respect reliable, high class instruments. The No. 2 Bulls-Eye has a fixed focus; the No. 4 has focusing device with index plate.

The No. 2 Bulls-Eye Kodak.

For square pictures,
3½ x 3½ inches;
capacity, 12 ex-
posures without
reloading; size of
camera, 4½ x 4½ x
5¾ inches; weight,
22 ounces; length
of focus of lens,
4½ inches.



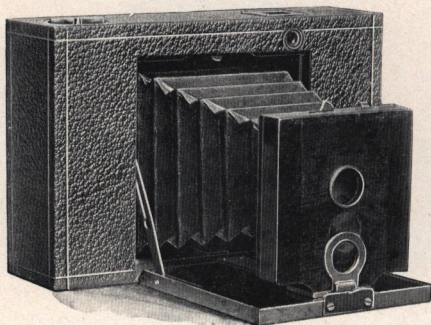
No. 2 Bulls-Eye Kodak, fitted with achromatic lens, not loaded,	\$ 8.00
Transparent Film Cartridge, 12 exposures, 3½ x 3½,	.60
Do., 6 exposures,	.30
Do., "Double-Two" Cartridge (4 exposures),	.20
Kodak Portrait Attachment,	.50
Black Sole Leather Carrying Case, with shoulder strap,	1.25



The No. 4 Bulls-Eye Kodak.

For rectangular
pictures, 4 x 5
inches; capa-
city, 12 expos-
ures without
reloading; size
of camera, 5 x
5½ x 9¼ inches;
weight, 2 lbs.,
10 ozs.; length
of focus of
lens, 6¼ ins.

No. 4 Bulls-Eye Kodak, fitted with achromatic lens, not loaded,	\$12.00
Transparent Film Cartridge, 12 exposures, 4 x 5,	.90
Do., 6 exposures,	.45
Do., "Double-Two" Cartridge (4 exposures),	.30
Black Sole Leather Carrying Case, with shoulder strap,	2.00



No. 2
Folding
Bulls-Eye
Kodak.

Being but $1\frac{3}{4}$ inches in thickness when closed is very convenient to carry. Will go in an ordinary overcoat pocket. This instrument is an adaptation of the well-known Bulls-Eye camera to the folding form, and though not quite so compact as the Folding Pocket Kodaks, it is in every way an efficient and reliable camera, capable of the highest grade of work. Fitted with fixed focus, achromatic lens, set of three stops, socket for tripod screw, square finder and improved Rotary shutter described on page 4. Handsomely finished with fine grain leather covering and nickel fittings.

For square pictures $3\frac{1}{2} \times 3\frac{1}{2}$ inches; capacity, 12 exposures without reloading; size of camera, closed, $1\frac{1}{4} \times 4\frac{5}{8} \times 7\frac{7}{8}$ inches; weight, 16 ounces; length of focus of lens, $4\frac{1}{2}$ inches.

No. 2 Folding Bulls-Eye Kodak, for $3\frac{1}{2} \times 3\frac{1}{2}$ pictures,	. . .	\$10.00
Transparent Film Cartridge, 12 exposures, $3\frac{1}{2} \times 3\frac{1}{2}$,60
Do., 6 exposures,30
Do., "Double-Two" Cartridge (4 exposures),20
Black Sole Leather Carrying Case, with strap,	. . .	1.25

No. 2
Flexo
Kodak.



The No. 2 Flexo is a well made instrument in every respect and is fitted with fixed focus achromatic lens, set of three stops, finder, socket for tripod screw and our improved Rotary shutter, described on page 4.

Well made, covered with grain leather and handsomely finished.

NOTE.—The prospective purchaser should bear in mind that the price of the Flexo Kodak includes every requisite for taking pictures except the film, whereas the price of most of the so-called five-dollar plate cameras includes only one plate holder, and a further expenditure of \$2 or \$3 is necessary if it is desired to make more than two exposures between each trip to the dark room.

For square pictures, $3\frac{1}{2} \times 3\frac{1}{2}$ inches; capacity, 12 exposures without reloading; size of camera, $4\frac{3}{8} \times 4\frac{3}{8} \times 5\frac{5}{8}$ inches; weight, 19 ounces; length of focus of lens, $4\frac{1}{2}$ inches.

No. 2 Flexo Kodak, with achromatic lens, not loaded,	.	.	.	\$ 5.00
Transparent Film Cartridge, 12 exposures, $3\frac{1}{2} \times 3\frac{1}{2}$,60
Do., 6 exposures,30
Do., "Double-Two" Cartridge (4 exposures),20
Kodak Portrait Attachment,50
Black Sole Leather Carrying Case, with shoulder strap,	.	.	.	1.25

THE BULLS-EYE SPECIAL KODAKS.



In these instruments the extreme simplicity of the original Bulls-Eyes is combined with the finest Rapid Rectilinear lenses and our triple action shutter. The shutters are arranged to work by levers instead of bulb, those for setting the shutter and making the exposure working from the outside of camera, so that the front need not be opened except to change the adjustment. The shutters are fitted with iris diaphragm stops, graduated for Nos. 4, 8, 16, 32, 64 and 128.

These Kodaks have square, brilliant finders, sockets for tripod screws, nicked fittings, are covered with fine black morocco and are superbly finished. The No. 2 has a fixed focus ; the No. 4 has focusing device with scale.



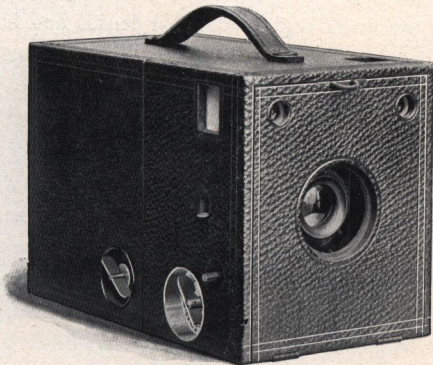
No. 2 Bulls-Eye Special Kodak.

For square pictures
3½ x 3½ inches;
capacity, 12 exposures without
reloading; size of
camera, 4½ x 4½ x
6¾ inches; weight,
28 ounces; length
of focus of lens,
5⅞ inches.

No. 2 Bulls-Eye Special Kodak, with rapid rectilinear lens, not loaded,	\$15.00
Transparent Film Cartridge, 12 exposures, 3½ x 3½,	.60
Do., 6 exposures,	.30
Do., "Double-Two" Cartridge, (4 exposures),	.20
Kodak Portrait Attachment,	.50
Black Sole Leather Carrying Case, with shoulder strap,	1.25

No. 4 Bulls-Eye Special Kodak.

For rectangular
pictures 4 x 5
inches; capacity,
12 exposures without
reloading; size
of camera, 5 x
5⅞ x 8⅞ inches;
weight, 2 lbs.,
12 ozs.; length
of focus of
lens, 6½ ins.



No. 4 Bulls-Eye Special Kodak, rapid rectilinear lens, Eastman triple action shutter, with iris diaphragm stops (not loaded),	\$20.00
Transparent Film Cartridge, 12 exposures, 4 x 5,	.90
Do., 6 exposures,	.45
Do., "Double-Two" Cartridge (4 exposures),	.30
Black Sole Leather Carrying Case, with strap,	2.00

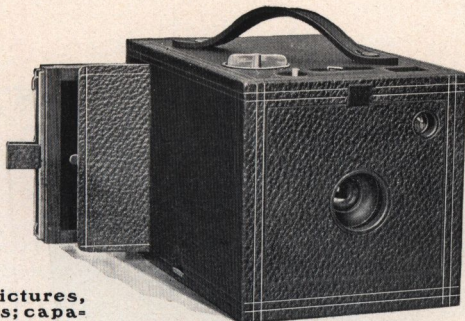
THE BULLET SPECIAL KODAKS.



These instruments are similar in design and construction to the Bulls-Eye Specials except that by the simple addition of the necessary plate holders to the outfit they may be used with plates as well as films (with plates the No. 2 makes $3\frac{1}{4} \times 3\frac{1}{2}$ pictures). They are rich and dainty in finish, are equipped with the finest rapid rectilinear lenses and have the Eastman triple action shutters with iris diaphragm stops, graduated for Nos. 4, 8, 16, 32, 64 and 128. See page 5. These shutters are arranged to work by levers, those for setting the shutter and making the exposure working from the outside of camera, so that the front need not be opened except to change the adjustment ; the No. 4, however, may be operated with bulb when desired. They have square, brilliant finders and sockets for tripod screws and take double plate holders. The No. 2 has a fixed focus, the No. 4 has focusing device with scale and when used with plates may be focused on the ground glass if desired.

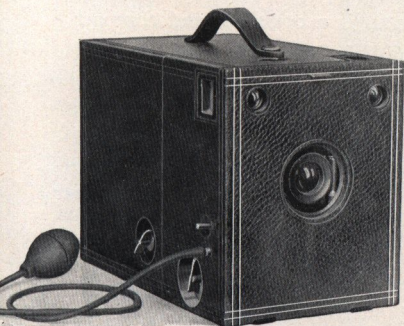
No. 2 Bullet Special Kodak.

Films and
Plates.



For square pictures,
3½ x 3½ inches; capacity,
12 exposures without reloading;
size of camera, 4¼ x 4¼ x 7½ inches; weight, 2 pounds,
2 ounces; length of focus of lens, 5⅝ inches.

No. 2 Bullet Special Kodak, with rapid rectilinear lens, not loaded,	\$18.00
Transparent Film Cartridge, 12 exposures, 3½ x 3½,60
Do., 6 exposures,30
Do., "Double-Two" Cartridge (4 exposures),20
Double Plate Holders, 3¼ x 3½, each,	1.00
Kodak Portrait Attachment,50
Black Sole Leather Carrying Case, with shoulder strap,	1.25



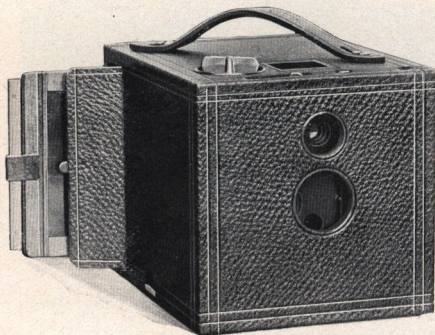
No. 4 Bullet Special Kodak.

Films and Plates.

For rectangular pictures, 4 x 5 inches;
capacity, 12 exposures without reloading;
size of camera, 5½ x 6¼ x 9¼ inches;
weight, 3 pounds, 12 ounces; length of focus
of lens, 6½ inches.

No. 4 Bullet Special Kodak, Model C, with rapid rectilinear lens, not loaded,	\$22.50
*Transparent Film Cartridge, 12 exposures, 4 x 5,90
*Do., 6 exposures,45
*Do., "Double-Two" Cartridge (4 exposures),30
*Double Plate Holders, 4 x 5, each,	1.00
*Black Sole Leather Carrying Case, with strap,	2.25

*Be sure and specify Model C when ordering.



No. 2 Bullet Kodak.

For Films
and Plates.

The Improved Bullet uses either roll films or glass plates (with plates the picture is $3\frac{1}{4} \times 3\frac{1}{2}$ inches) and whether used for Film Cartridges or glass plates is a complete and compact instrument of great capabilities. It is fitted with the finest fixed focus, meniscus achromatic lens, set of three stops, square, brilliant finder, socket for tripod screw, and has our improved Rotary shutter described on page 4. Handsome finish, nickel fittings, covered with finest seal grain leather.

For square pictures, $3\frac{1}{2} \times 3\frac{1}{2}$ inches; capacity, 12 exposures without reloading; size of camera, $4\frac{1}{4} \times 4\frac{7}{8} \times 6\frac{1}{2}$ inches; weight, 28 ounces; length of focus of lens, $4\frac{1}{2}$ inches.

No. 2 Bullet Kodak, fitted with achromatic lens (not loaded),	\$10.00
Transparent Film Cartridge, 12 exposures, $3\frac{1}{2} \times 3\frac{1}{2}$,60
Do., 6 exposures,30
Do., "Double-Two" Cartridge (4 exposures),20
Double Plate Holders, $3\frac{1}{4} \times 3\frac{1}{2}$, each,	1.00
Kodak Portrait Attachment,50
Black Sole Leather Carrying Case, with shoulder strap,	1.25

CARTRIDGE KODAKS.

Films and Plates.



In these instruments the Kodak idea is perfected.

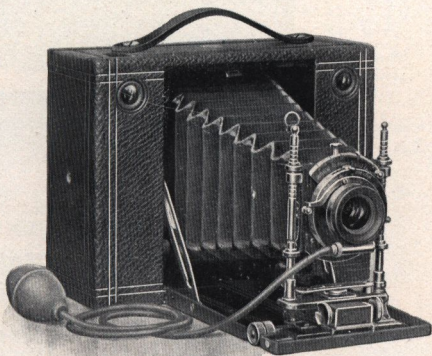
Strength and lightness are secured in the Cartridge Kodaks by a judicious combination of aluminum and hard wood—the latter being treated to a secret process of our own by which it resists atmospheric changes to a remarkable degree. No other camera of equal capabilities can so well withstand the rough usage of travel.

The lenses furnished in the regular equipment are strictly rectilinear and very rapid, having a working speed of $f. 8$. They do not, therefore, require the most favorable conditions but enable the operator to secure good instantaneous pictures under circumstances where such pictures would be impossible

with a less powerful lens. Our system of inspection insures a perfect lens with every instrument.

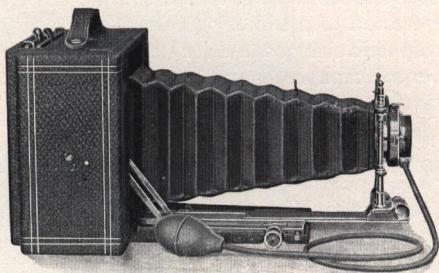
The Cartridge Kodaks have the Eastman Triple Action Shutters with iris diaphragm stops from No. 4 to No. 128. They are described in detail on page 5.

The new Cartridge Kodaks have an improved rising front which locks automatically and also an improved side slide



(rising when used for horizontal pictures) and have aluminum leather covered front boards of great strength, but which are nevertheless light and are very neat in appearance.

The glass plate attachments which are supplied (extra) for these instruments may be attached in a few seconds. With plates the instrument may be focused either on the ground glass or by the focusing scale.



**SHOWING BELLOWS EXTENDED AND PLATE
ADAPTER ATTACHED.**

An extra extension to bellows, operated by means of rack and pinion, permits the photographing of objects at a distance of only 18 inches from the lens and also permits of the advantageous use of a tele-photo attachment. With the extra extension the ground glass is, of course, to be employed in focusing.

The Cartridge Kodaks have brilliant finders and tripod sockets for both vertical and horizontal exposures, have our patent non-collapsing bellows and are covered with the finest seal grain leather. In design, construction and finish they leave nothing to be desired.

No. 3 Cartridge Kodak.

For rectangular pictures, $4\frac{1}{4} \times 3\frac{1}{4}$ inches; capacity, 12 exposures without reloading; size, closed, $3\frac{1}{4} \times 5\frac{1}{4} \times 7\frac{1}{2}$ inches; weight, 2 lbs., 12 ozs.; length of focus of lens, 6 inches.

*No. 3 Cartridge Kodak, rapid rectilinear lens, Eastman Triple Action

Pneumatic Shutter (not loaded),	\$20.00
Transparent Film Cartridge, 12 exposures, $4\frac{1}{4} \times 3\frac{1}{4}$,	.70
Do., 6 exposures,	.35
Do., "Double-Two" Cartridge, 4 exposures,	.25
Glass Plate Adapter, with ground glass,	2.00
Double Plate Holders, each,	1.00

No. 4 Cartridge Kodak.

For rectangular pictures, 5 x 4 inches; capacity, 12 exposures without reloading; size of camera, $3\frac{1}{4} \times 6\frac{3}{8} \times 8\frac{1}{4}$ inches; weight, 3 lbs., 2 ozs.; length of focus of lens, $6\frac{1}{2}$ inches.

*No. 4 Cartridge Kodak, with rapid rectilinear lens and Fastran

Triple Action Pneumatic Shutter (not loaded),	\$25.00
Transparent Film Cartridge, 12 exposures, 5 x 4,	.90
Do., 6 exposures,	.45
Do., "Double-Two" Cartridge, 4 exposures,	.30
Glass Plate Adapter, with ground glass,	2.50
Double Glass Plate Holders, each,	1.00

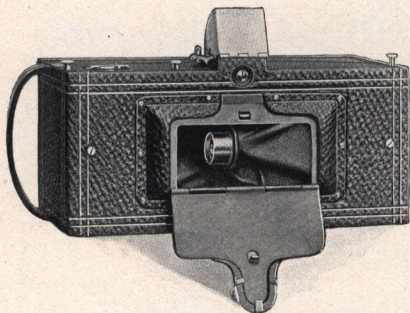
No. 5 Cartridge Kodak.

For rectangular pictures, 7 x 5 inches; capacity, 12 exposures without reloading; size of camera, $3\frac{3}{8} \times 8\frac{1}{2} \times 10$ inches; weight, 4 lbs., 8 ozs.; length of focus of lens, $8\frac{1}{2}$ inches.

*No. 5 Cartridge Kodak, with rapid rectilinear lens and Eastman

Triple Action Pneumatic Shutter (not loaded),	\$35.00
Transparent Film Cartridge, 12 exposures, 7 x 5,	1.60
Do., 6 exposures,	.80
Do., "Double-Two" Cartridge, 4 exposures,	.55
Glass Plate Adapter, with ground glass,	3.00
Double Glass Plate Holders, each,	1.25

*For special lenses and shutter equipment, see page 30.



The Panoram Kodaks.

A new and delightful phase of photography is offered to the amateur by the Panoram-Kodaks. Pictures of broad landscapes, river and marine views made with these instruments have a breadth and beauty not obtainable with the ordinary camera. Vertical pictures of high water falls and mountain peaks, as well as horizontal pictures, give most delightful effects, while the great speed of the swinging lens and shutter, combined with the wide scope of view, make them unequalled in the taking of out-door group pictures, the subjects in such cases being arranged in a semi-circle and all at an equal distance from the Kodak.

In the Panoram-Kodaks is found a new "witchery of Kodakery"—a most delightful field for the amateur.

These instruments have carefully tested lenses, improved two-speed shutters, spirit levels, brilliant finders which show the sky and foreground and by means of which the entire view may be examined by simply swinging the camera, before exposure, so as to take in the full scope of view as indicated by the V shaped lines on top of camera. The Panoram-Kodaks are covered with the finest black morocco, have nickeled fittings and are beautifully finished.

These instruments are, of course, not intended for taking timed exposures or interiors.

No. 1 Panoram-Kodak.

USES No. 1 FOLDING POCKET KODAK CARTRIDGES.

For pictures $2\frac{1}{4} \times 7$ inches; capacity, 6 exposures without reloading; size of camera, $3\frac{3}{8} \times 4\frac{1}{4} \times 7\frac{3}{8}$ inches; weight, 24 ounces; length of focus of lens, $3\frac{3}{6}$ inches; angle of view, 112° .

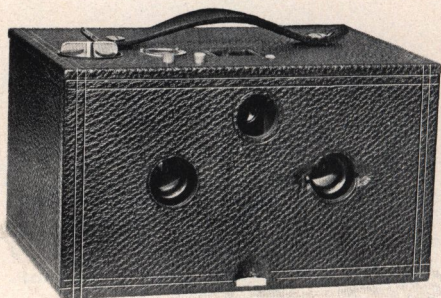
No. 1 Panoram-Kodak, (not loaded),	\$10.00
Transparent Film Cartridge, 6 exposures, $2\frac{1}{4} \times 7$ (regular No. 1 Folding Pocket Kodak Cartridge),40
Do., 3 exposures,20
Black Sole Leather Carrying Case, with shoulder strap,	1.75

No. 4 Panoram-Kodak.

USES No. 4 BULLS-EYE FILM CARTRIDGES.

For pictures $3\frac{1}{2} \times 12$ inches; capacity, 5 exposures without reloading; size of camera, $4\frac{1}{4} \times 5\frac{1}{2} \times 10\frac{1}{8}$ inches; weight, 2 pounds, 14 ounces; length of focus of lens, 5 inches; angle of view, 142° .

No. 4 Panoram-Kodak, not loaded,	\$20.00
Transparent Film Cartridge, 5 exposures, $3\frac{1}{2} \times 12$ (regular No. 4 Bulls-Eye Cartridges),90
Do., 2 exposures,45
Black Sole Leather Carrying Case,	2.00



**The
No. 2
Stereo
Kodak.**

Since its inception stereoscopic photography has had many enthusiastic devotees. That there is wonderful depth and beauty in *properly made pictures* viewed through the stereoscope cannot be gainsaid. The introduction of the Stereo Kodak puts into the hands of the amateur the means of making optically correct stereoscopic pictures, while the instruction book which will accompany each instrument covers not only the usual ground of manipulating the camera, developing, etc., but gives detailed instructions in properly printing and mounting stereo work.

These instruments may be said to resemble in model the well known Bulls-Eye cameras, but are equipped with twin Rapid Rectilinear lenses and a modification of our automatic shutter. They use the standard size No. 2 Kodak Cartridges which may be obtained the world over, and they may be loaded for one, two, three or six stereoscopic pictures. By a simple blind, which cuts off the light from one of the lenses, they may also be used for single exposures, in which case the pictures are

the same in size as those made with a No. 2 Bulls-Eye Kodak, $3\frac{1}{2} \times 3\frac{1}{2}$ inches.

The Stereo Kodaks have sets of three stops, square, brilliant finder, spirit level, socket for tripod screw, are covered with fine seal grain leather and have heavily nickeled fittings. They are simple and accurate; they give correct stereoscopic effects and are high grade in every particular.

Those who are familiar with stereoscopic work will readily appreciate the advantages of film over plates, especially where a large number of prints is to be made. With plates it is necessary to cut every pair of prints apart; trim and transpose them before mounting. With film the negatives may be cut apart and transposed and any number of prints then made from them on die cut paper—the trimming and transposing of prints being entirely done away with.

For standard size ($3\frac{1}{2} \times 6$ in.) stereoscopic pictures or single exposures $3\frac{1}{2} \times 3\frac{1}{2}$ inches; capacity, 6 stereoscopic or 12 single exposures without reloading; size of Kodak, $4\frac{1}{4} \times 6 \times 8\frac{1}{8}$ inches; weight, 2 lbs. 3 ozs.; length of focus of lenses, $4\frac{1}{4}$ inches.

No. 2 Stereo Kodak, fitted with pair of rapid rectilinear lenses, not loaded,	\$15.00
Transparent Film Cartridge, 6 stereo exposures (Regular No. 2 Bulls-Eye 12 ex. cart.),60
Do., 3 exposures, (No. 2 B. E. 6 ex. cart.),30
Do., 2 exposures, (No. 2 B. E. "Double Two" Cart.),20
Black Sole Leather Carrying Case with shoulder strap,	2.00

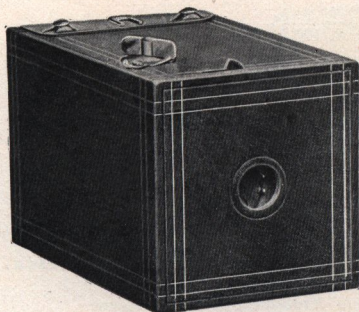
THE BROWNIE CAMERAS.



Simple to operate, small in cost, yet capable of wonderfully good photographic work, the Brownie Cameras appeal particularly to boys and girls of school age and to older people who wish to invest but little in photographic apparatus until they are sure that the art will appeal to them.

The Brownies have fine Meniscus lenses, which are amply rapid for ordinary snap-shot work and make clear, sharp pictures. They have our rotary shutters described on page 4, and load in daylight with Transparent Film Cartridges for six exposures. They are strongly made, have nickeled fittings and are covered with imitation leather. The No. 2 Brownies have also sets of three stops and two finders, one for vertical and one for horizontal exposures. The No. 1 Brownie may be fitted with the Detachable Brownie Finder, or the scope of view may be determined by the V shape lines on top of camera.

The marvelously good work which has been accomplished by school boys and girls with the No. 1 Brownie accounts for the fact that no camera has ever had so great a sale in the same length of time. The No. 2 Brownies being equally simple yet having two finders and sets of three stops and making a much larger picture are destined to become enormously popular.



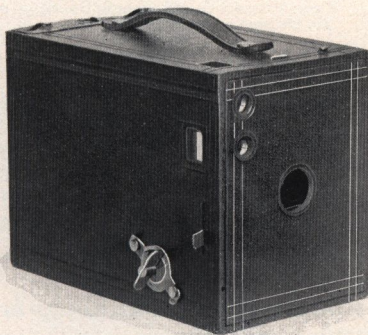
No. 1 Brownie Camera.

For square pictures,
2¼ x 2¼ in.; capa-
city, 6 exposures
without reloading;
size of camera, 3 x
3½ x 4½ in.; weight,
8 ozs.; length of
focus of lens, 3¼
in.

No. 1 Brownie Camera, for 2¼ x 2¼ pictures,	\$1.00
Transparent Film Cartridge, 6 exposures, 2¼ x 2¼,15
Brownie Finder, detachable,25
No. 1 Brownie Carrying Case, holds camera and finder,50
No. 1 Brownie Developing and Printing Outfit, including Dekko Paper for 24 prints,75

No. 2 Brownie Cameras.

For rectangular
pictures, 2¼ x
3¼ in.; capa-
city, 6 expos-
ures without
reloading; size
of camera, 3¼
x 4 x 5½ ins.;
weight, 13
ozs.; length of
focus of lens, 4½ inches.



No. 2 Brownie Camera, for 2¼ x 3¼ pictures,	\$2.00
Transparent Film Cartridge, for 6 exposures, 2¼ x 3¼,20
No. 2 Brownie Carrying Case,75
A B C Developing and Printing Outfit, see page 31,	1.50

Special Lens and Shutter Equipments.

In place of the excellent regular equipment with which we furnish the Cartridge Kodaks and the No. 3 Folding Pocket Kodaks these instruments can be equipped with the new Bausch & Lomb Plastigmat lenses if the customer so desires. We guarantee these lenses to be fully the equal of any Anastigmat lenses made by other manufacturers.

EXTRA PRICES FOR SPECIAL EQUIPMENTS.

The following prices are to be added to the list price of the Kodak with regular equipment.

No. 3 Folding Pocket Kodak, Rapid Rectilinear lens, Equivalent focus, 5 inches; Speed, f . 8, and Unicum shutter, EXTRA,	\$ 8.00
No. 3 Folding Pocket Kodak, Bausch & Lomb Plastigmat lens, No. 1, Equivalent focus, 5 inches; Speed, f . 6.8, and Unicum Shutter, EXTRA,	40.00
No. 3 Cartridge Kodak, Bausch & Lomb Plastigmat lens, No. 1, Equivalent focus, 5 inches; Speed, f . 6.8, and Unicum shutter, EXTRA,	35.00
No. 4 Cartridge Kodak, Bausch & Lomb Plastigmat Lens, No. 2, Equivalent focus, $6\frac{1}{4}$ inches; Speed, f . 6.8, and Bausch & Lomb Iris Diaphragm shutter, EXTRA,	47.50
No. 5 Cartridge Kodak, Bausch & Lomb Plastigmat lens, No. 3, Equivalent focus, $7\frac{1}{2}$ inches; Speed, f . 6.8, and Bausch & Lomb Iris Diaphragm shutter, EXTRA,	54.50

Kodak Portrait Attachments.

The Kodak Portrait Attachments greatly increase the value of the small fixed focus instruments by adapting them to the making of large bust pictures. By their use any one of the Kodaks named below will make head and shoulder pictures equaling in size an ordinary mantello photograph. These attachments are simply extra lenses which slip on over the lens hood or are inserted in the opening in the front board of camera, as the case may be.

Kodak Portrait Attachments are made for the following instruments :

No. 1 Folding Pocket Kodaks.	No. 2 Bulls-Eye Special Kodaks.
No. 1A Folding Pocket Kodaks.	No. 2 Bullet Kodaks.
No. 2 Folding Pocket Kodaks.	No. 2 Bullet Special Kodaks.
No. 3 Folding Pocket Kodaks.	No. 2 Flexo Kodaks.
No. 2 Bulls-Eye Kodaks.	

Price, 50 cents.

Be sure and give exact designation of instrument when ordering.

Developing and Printing Outfits.



Eastman's A B C Developing and Printing Outfit includes every requisite for developing, printing and finishing 24 4 x 5, 2½ x 4¼ or 3¼ x 4¼ or 48, 2¼ x 3¼ pictures.

IT CONTAINS:

1 Eastman Improved Candle Lamp,	\$0.25	½ lb. Hyposulphite Soda,	\$0.07
1 4 x 5 Printing Frame,25	½ oz. Bromide Potassium,10
1 " Glass for do.,05	2 doz. 4 x 5 Solio Paper,25
1 Glass Beaker,12	2 ozs. Solio Toning Solution,15
1 Stirring Rod,05	1 oz. Glycerine,05
4 4½ x 5½ Developing Trays,40	Instruction Book,10
½ doz. Developing Powders,25		
			<hr/> \$2.09

Price, complete, neatly packed, \$1.50.

Eastman's Bulls-Eye Developing and Printing Outfit complete for developing and printing 12 pictures, 3½ x 3½. Similar to above outfit, but including 1 doz. 3½ x 3½ Solio paper, instead of 2 doz. 4 x 5, and containing smaller quantities of chemicals.

Price, complete, neatly packed, \$1.00

Special 5 x 7 Developing and Printing Outfit complete for developing and printing 24 pictures, 5 x 7.

Price, complete, neatly packed, \$2.00

No. 1 Brownie Developing and Printing

Outfit, complete for developing 24 pictures, 2¼ x 2¼ and printing on Dekko Paper,75

NOTE.—These outfits cannot be shipped by mail.

OUR complete illustrated Kodak catalogue, listing not only the Kodaks, but the full line of Kodak supplies and photographic papers, may be had for the asking, of any photographic stock dealer, or by mail.

EASTMAN KODAK CO.

Rochester, N. Y.



JORDAN, MARSH & CO.
Boston, Mass.