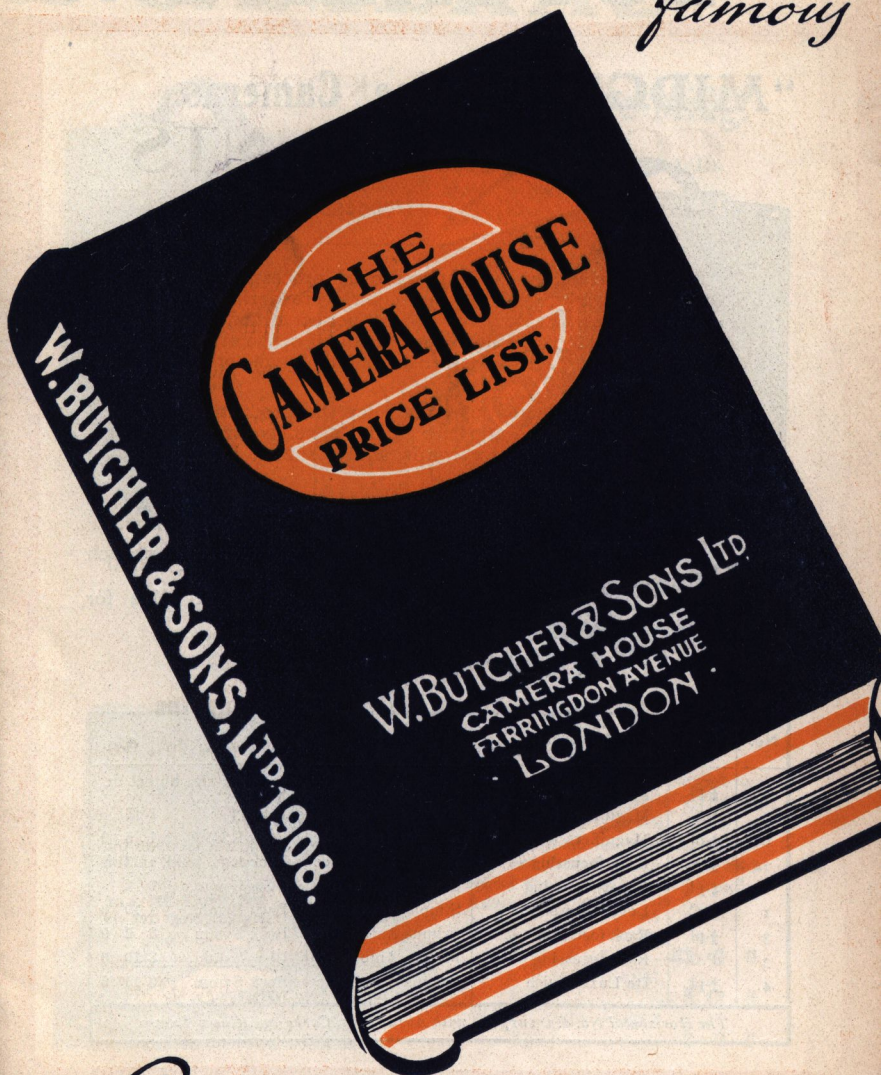


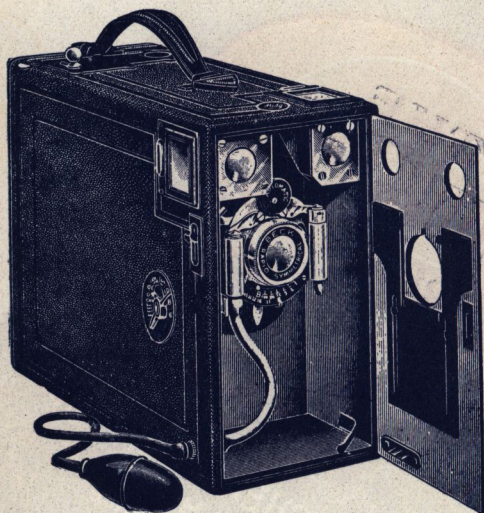
*Some Excerpts from a
famous*



Camera Catalogue

BUTCHER'S FAM

"MIDG" Magazine Cameras.



The striking value of this series of Cameras is now admitted throughout the whole world. They are suitable for all countries. No similar series of cameras offers such excellent value for money.

No.	Size.	Focussing.	Shutter.	Lens.	Price.
o	$\frac{1}{2}$ -pl.	Magnifiers	Everset 1 to $\frac{1}{100}$ sec.	R.R.	£1 1 0
o	P.C.	Magnifiers	Everset 1 to $\frac{1}{100}$ sec.	R.R.	1 15 0
oo	$\frac{1}{2}$ -pl.	Magnifiers	Everset 1 to $\frac{1}{100}$ sec.	Beck R.R.	1 5 0
1a	$\frac{1}{2}$ -pl.	Rack focussing	Everset 1 to $\frac{1}{100}$ sec.	Beck R.R.	1 11 6
1	$\frac{1}{2}$ -pl.	Lever focussing	Simple Automatic	Beck Symm.	2 2 0
1	P.C.	Lever focussing	Simple Automatic	Beck Symm.	2 10 0
3	$\frac{1}{2}$ -pl.	Rack focussing	Primus Automatic	Beck Symm.	3 0 0
3	P.C.	Rack focussing	Primus Automatic	Beck Symm.	3 10 0
4	$\frac{1}{2}$ -pl.	De Luxe Finish	Primus Automatic	Beck Symm.	3 10 0

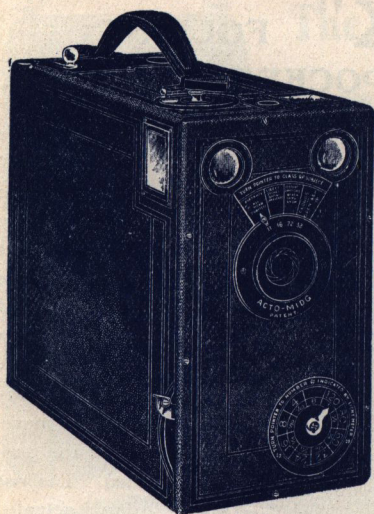
The Horizontal No. 4. is supplied with Aldis, Ross, Cooke and Goerz Lenses.

W. BUTCHER & SONS Ltd.

Camera Works: Blackheath.

SUPPLIED BY ALL

US CAMERAS



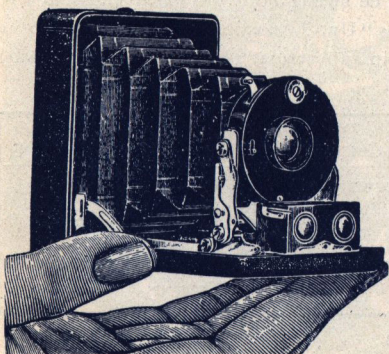
The Acto-Midg.

The Camera that tells you what exposure is necessary.

The "Acto-Midg" is the latest advance in hand camera construction, and with it is combined a light meter working in conjunction with the shutter, giving the correct speed under all conditions of lighting.

Prices complete for 12 $\frac{1}{4}$ -plates—
 Fitted with single Achro
 Lens, working at F/11 £2 2 0
 Fitted with Uno Aldis
 Anastigmat Lens,
 working at F/7.7 3 3 0

The Miniature Selfix.



A waistcoat pocket camera for pictures on plates $2\frac{5}{16} \times 1\frac{3}{4}$.

A dainty little camera, measuring when closed $3\frac{1}{4} \times 2\frac{1}{2} \times 1\frac{1}{2}$. Fitted with a front, which on pulling down the baseboard comes out and locks itself in position ready focussed.

With single Achro
 Lens, F/11 £2 2 0
 With Rapid Aplanat,
 F/8..... 2 12 0
 With Goerz Dagor,
 F/6.8 7 0 0

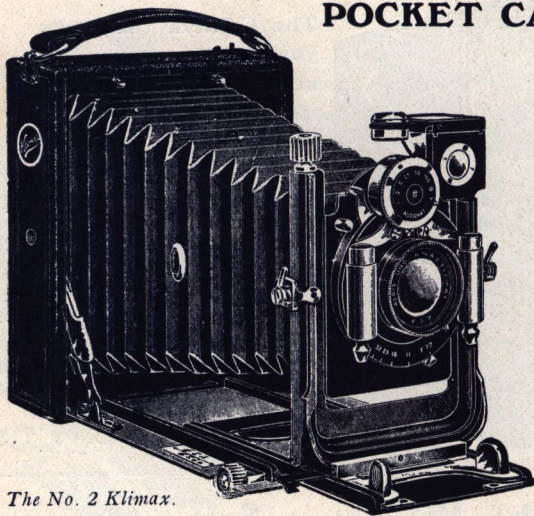
arrington Av., London, E.C.

TOGRAPHIC DEALERS.

Photo Mount Works: Copenhagen St.

BUTCHER'S FA

"KLIMAX" FOLDING POCKET CAMERAS.



The No. 2 Klimax.

One of the special 'Klimax' features is the extreme rigidity of the front. It is of remarkable strength and when in position is absolutely steady. Rising and cross movements are provided. The rise being actuated by a quick thread screw. The camera is made

of mahogany and the back can be swung both ways and locked at any angle. The lens is the new Aldis "Uno" Anastigmat $f/7.7$ —covering the plate well at open aperture—set in an Automat Shutter. Focussing is by rack and pinion.

Size.	Lens.	Model No. 1. Single Extension.	Model No. 2. Double Extension.
$\frac{1}{4}$ -plate	Aldis "Uno" Anastigmat	£3 15 0	£4 7 6
5×4	" " "	4 15 0	5 7 6
Post-card	" " "	4 15 0	5 7 6
$\frac{1}{2}$ -plate	" " "	5 15 0	6 7 6

Also fitted with Primar, Aldis, Cooke, Dallmeyer, Goerz & Ross Lenses.

Extra Dark Slides .. $\frac{1}{4}$ -pl. 1/6 5×4, 2/0 Post-card, 2/0 $\frac{1}{2}$ -pl., 2/6

W. BUTCHER & SONS Ltd

Camera Works: Blackheath, S.E.

SUPPLIED BY

US CAMERAS

The "Uno" Cameras

Fitted with Aldis 'Uno' Anastigmats F/7.7.

The Aldis "Uno" is an anastigmat, giving sharp and critical definition from corner to corner of the plate. The finest lens fitted on an inexpensive camera.

The "Uno-Carbine."

A roll film or plate camera of the best workmanship, having every movement. The "Uno" lens is fitted in an automat shutter.

$\frac{1}{4}$ -plate £3 12 6
Post-Card 4 12 6

The "Uno-Cameo."

A folding pocket plate camera made entirely of metal. It has every movement. A particularly rigid front is fitted. The shutter is a simplex automatic.

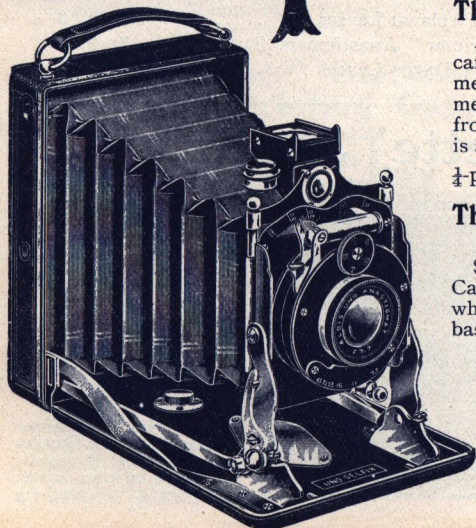
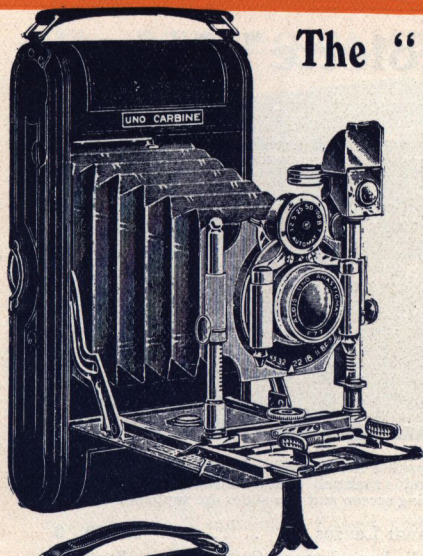
$\frac{1}{4}$ -plate £2 15 0

The "Uno-Selfix."

(As illustrated).

Similar to the "Uno" Cameo, but with a front which, on pulling down the baseboard comes out into position and locks itself ready focussed. A focussing movement is provided for near objects.

$\frac{1}{4}$ -plate £3 15 0



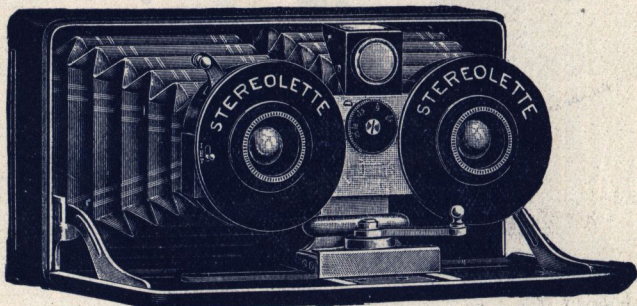
Photographic Dealers, Harrington Av., London, E.C.

Photo Mount Works: Copenhagen St.

BUTCHER'S FAM

The "Stereolette" Cameo

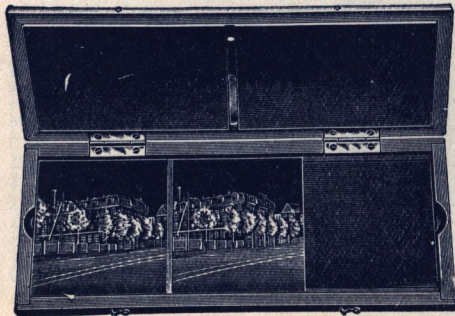
A dainty Camera taking Stereoscopic picture $4\frac{1}{4} \times 1\frac{3}{4}$ (45×107 c/m).



An exquisitely finished camera taking Stereoscopic pictures. It is made of metal, leather-covered, has a rising front and is rack and pinion focussing. The shutter is an everset automatic. A hooded focussing screen and two slides are supplied.

With a pair of Rapid Aplanat Lenses $f/8$	£3 10 0
With a pair of "Primar" Anastigmats $f/6.8$	8 0 0
With a pair of Goerz Dagor Lenses $f/6.8$	12 0 0

"Stereolette" Sundries.



"Primus" Transparency Printing Frame (as illustration).

For printing glass transparencies from Stereolette negatives.

PRICE .. 4/6

"Primus" Transparency Printer.

For making glass transparencies in one printing without transposing.

PRICE .. 15/-

The "Primus" Stereoscopic Printing Gauge.

For printing Stereolette negatives on to post-cards.

PRICE, Gauge & Masks, 1/3

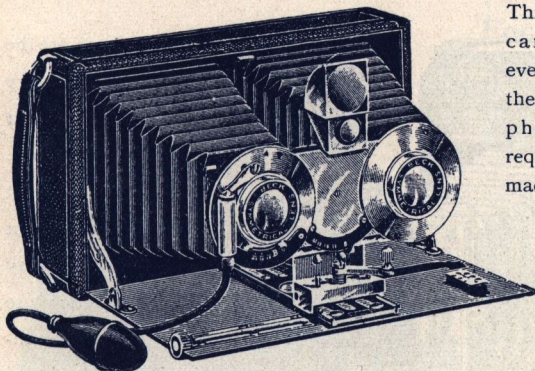
W. BUTCHER & SONS Ltd

Camera Works: Blackheath.

SUPPLIED BY

OUS CAMERAS

The STEREO-CAMEO FOLDING CAMERAS. Standard size $6\frac{1}{2} \times 3\frac{1}{4}$.

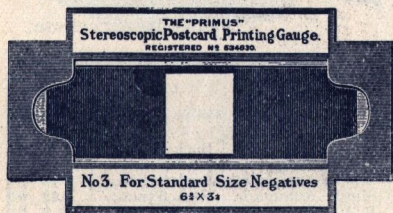


This series of cameras have every movement the stereoscopic photographer requires. Well-made, they fold

into a very small space, and can be carried in an ordinary jacket pocket.

No. 0.	Single Achromatic Lenses and Simplex Shutter	£2 15 0
No. 1.	Beck Symmetrical Lenses and Automatic Shutter, $\frac{1}{25}$, $\frac{1}{50}$, $\frac{1}{100}$	5 0 0
No. 2.	Beck Symmetrical Lenses and Primus Shutter, 1 to $\frac{1}{100}$ sec.	6 6 0

The "Primus" Stereoscopic Post-card Printing Gauge (Registered).



This gauge enables stereoscopic negatives to be printed with the greatest ease and accuracy on sensitized post-cards. With each gauge a supply of masks are supplied, as well as complete instructions for making.

		PRICES.	Gauge and Mask.	Gauge and Mask, with 1/4-plate Printing Frame and Glass.
No. 1.	For Stereolette size negatives ($4\frac{1}{2} \times 1\frac{3}{4}$)..	1/3	2/6
No. 2.	„ Post-card „ „ ($5\frac{1}{2} \times 3\frac{1}{2}$)..	1/3	2/6
No. 3.	„ Standard „ „ ($6\frac{1}{2} \times 3\frac{1}{4}$)..	1/6	2/9

Booklet "Stereoscopic Pictures and How to make them" free on application.

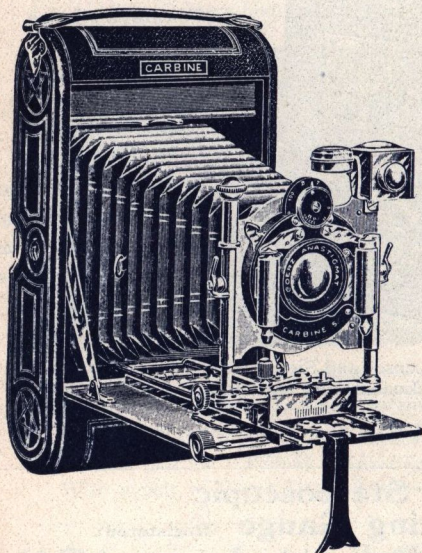
Farringdon Av., London, E.C.

PHOTOGRAPHIC DEALERS.

Photo Mount Works : Copenhagen Street.

BUTCHER'S FAM

"CARBINE" ROLL FILM and PLATE CAMERAS.



The "Carbines" are the most completely equipped roll film cameras on the market. This design is most carefully thought out and they have many features of practical use not found on other instruments. Designed primarily for roll films, they are so constructed that plates can also be used. They are provided with every movement of practical use.

No.	Size.	Extension.	Shutter.	Lens.	Price.
2	$\frac{1}{2}$ -pl.	Single	Simple Automatic	Beck R.R.	£2 5 0
2	P.C.	Single	Simple Automatic	Beck R.R.	3 3 0
3a	$\frac{1}{2}$ -pl.	Single	Simple Automatic	Beck Symm.	2 12 6
3a	P.C.	Single	Simple Automatic	Beck Symm.	3 10 0
3b	$\frac{1}{2}$ -pl.	Single	B. & L. Automat	Beck Symm.	3 3 0
3b	P.C.	Single	B. & L. Automat	Beck Symm.	4 0 0
4	$\frac{1}{2}$ -pl.	Single, rack focussing	Primus Automatic	Beck Symm.	3 12 6
4	P.C.	Single, rack focussing	Primus Automatic	Beck Symm.	4 12 6
4	$\frac{1}{2}$ -pl.	Single, rack focussing	Primus Automatic	Beck Symm.	6 6 0
5	$\frac{1}{2}$ -pl.	Double, rack focussing	Primus Automatic	Beck Symm.	4 10 0

Also with Aldis, Cooke, Goerz, Dallmeyer and Ross Lenses.

W. BUTCHER & SONS Ltd.

Camera Works Blackheath.

SUPPLIED BY AL

OUS CAMERAS

The "Pressman - Reflex."



Focal Plane.

Is in every respect an instrument of the higher order. It is remarkably free from unnecessary complications, but at the same time has every movement necessary for rapid and reliable working. The shutter is of the permanent slit variety, *i.e.*—with fixed apertures, and the desired opening can be instantly brought into position. The rotating back works in conjunction with a revolving mask under the focussing screen, showing the exact horizontal or vertical picture. The camera is made in the best possible manner and is not affected by climatic influences.

Price List.

$\frac{1}{4}$ plate Camera and 6 Single Metal Slides.
5×4 Camera and 3 Double Mahogany Slides.

Lens.	$\frac{1}{4}$ plate.	5×4
Camera and Slides only	£9 9 0	£14 14 0
Aldis Uno Anastigmat, <i>f</i> /7.7	10 14 0	—
Cooke Lens, Series III., <i>f</i> /6.5	14 6 0	20 17 0
Ross Zeiss Tessar, Series IIB., <i>f</i> /6.3	15 0 0	23 4 0
Goerz, Series IB., <i>f</i> /4.8	15 19 0	23 19 0
Goerz, Series III., <i>f</i> /6.8	15 14 0	23 9 0

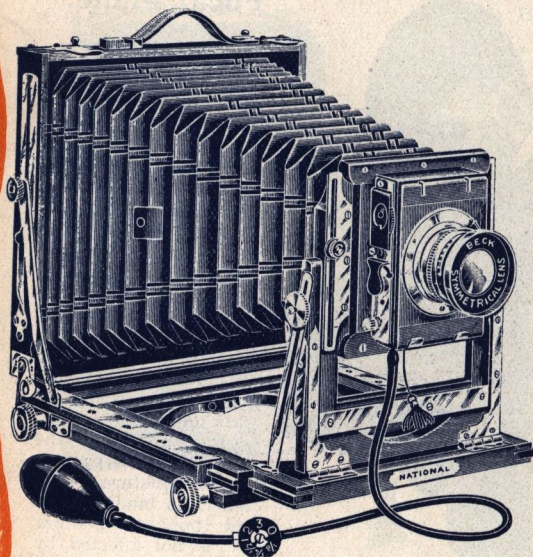
Farringdon Av., London, E.C.

PHOTOGRAPHIC DEALERS.

Photo Mount Works: Copenhagen St.

Butcher's FAMOUS CAMERAS.

The "NATIONAL" FIELD CAMERA OUTFITS.



This range of outfits is made throughout in the best possible manner, with substantial brass fittings. Every necessary movement is provided. Swing and reversing back, wide-angle movement and swing and rising front, roller blind shutters with time valves, giving a range of exposures from $\frac{1}{10}$ to 3 secs., the whole forming outfits of a most serviceable type at a remarkably low cost. Models in teak are now made, which will be greatly appreciated by those living in tropical climates.

No.	Size.	Extension, etc.	Shutter.	Lens.	Price.
4	$\frac{1}{4}$ -pl.	Double, revolving back	Swift R.B.	Beck Symm.	£2 17 6
4	$\frac{1}{2}$ -pl.	Triple, revolving back	Swift R.B.	Beck Symm.	3 15 0
4	$\frac{1}{1}$ -pl.	Triple, revolving back	Swift R.B.	Beck Symm.	5 17 6
8	$\frac{1}{2}$ -pl.	Teak, triple	Swift R.B.	Beck Symm.	4 15 0
8	$\frac{1}{1}$ -pl.	Teak, triple	Swift R.B.	Beck Symm.	7 7 6
9	$\frac{1}{2}$ -pl.	Teak, brass-bound	Swift R.B.	Beck Symm.	5 15 0
9	$\frac{1}{1}$ -pl.	Teak, brass-bound	Swift R.B.	Beck Symm.	8 12 6
5	$\frac{1}{2}$ -pl.	Triple, brass-bound	Swift R.B.	Beck Symm.	4 15 0
5	$\frac{1}{1}$ -pl.	Triple, brass-bound	Swift R.B.	Beck Symm.	7 2 6
5	10 x 8	Double, brass-bound	Swift R.B.	Rapid Rectil.	10 0 0
5	11 x 10	Double, brass-bound	Swift R.B.	Rapid Rectil.	11 10 0
5	15 x 12	Double, brass-bound	Swift R.B.	Rapid Rectil.	13 13 0

W. BUTCHER & SONS Ltd.,

Camera Works: Blackheath.

SUPPLIED BY ALI

Butcher's

POST-CARD PRINTER.

The "Klimax" Post-card Printers.

(Patent applied for.)

The 'Klimax' Post-Card Frame.

Can be used in the hand and exposed to the gas flame in the usual manner, or it can be screwed down to a table or box, with a hole in it and exposures made by means of the foot.

This Frame overcomes the following difficulties:—

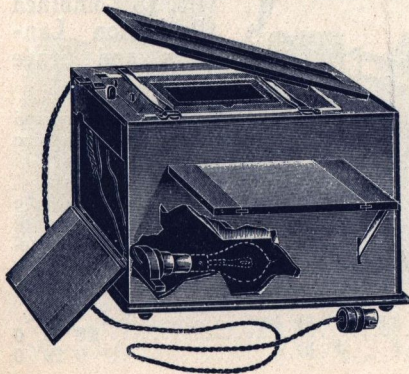
1. Of easily selecting the best portion of Negative.
2. Of holding the Negative and Mask securely.
3. Of printing Post-Cards from smaller negatives.
4. Of printing a small piece from a large negative.
5. Of printing with a very thin white margin.
6. Of combination printing.



PRICES.

Frame, including $\frac{1}{4}$ -plate and
 $\frac{1}{2}$ -plate Negative Carriers
 and three Masking Gauges
 ($\frac{1}{4}$ -plate, Post-card and
 $\frac{1}{2}$ -plate) 6/6

The 'Klimax' Printing Boxes.



Made of polished mahogany, and fitted with a patent 'Klimax' Printing Frame. The burner is fitted with a most ingenious bye-pass, and the act of bringing down the pressure board of the frame automatically gives the full supply of light. On releasing the pressure the light is cut off again.

For electric light . . £1 5 0
 For incandescent gas 1 10 0

Farringdon Av., London, E.C.

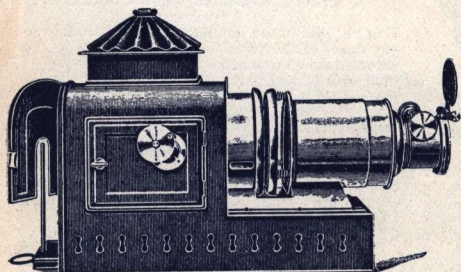
PHOTOGRAPHIC DEALERS.

Photo Mount Works: Copenhagen St.

BUTCHER'S FAM

Optical Lanterns.

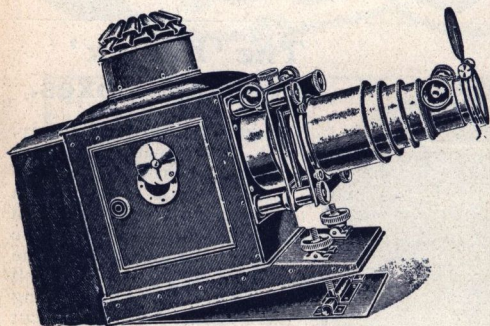
We make a very large and well assorted range of lanterns, particulars will be found in our booklet "Optical Lanterns and how to use them;" we invite you to write for a copy of this list.



The "Council."

is a first-rate lantern made of Russian Iron, with extra heavy brass front and draw-tubes. It has a 4" plano-convex condenser, a 2" diameter lens and a Russian Iron carrying case. Its great point—the maximum value at the minimum price.

No. 10d.	Fitted with tray and cowl	£2 14 0
" 10	" 3-wick lamp	2 16 0
" 10a	" 4-wick lamp	2 17 6
" 10c	" incandescent burner, support and reflector	2 19 6
" 10e	" Stocks' pattern lamp	3 10 6
" 10sl	" No. 0 Meta spirit lamp	3 2 6



The "Iron Duke" No. 18 Combined Projection Lan- tern and Stage Arc.

A well-constructed lantern of large size for use with arc lamps. It has a 5" condenser, and the front, which is of heavy build, is detachable, enabling the lantern to be used as a stage arc.

Fitted with 2-in cylinder lenses	£9 0 0
Fitted with 2½-in. cylinder lenses	9 12 0

W. BUTCHER & SONS Ltd.,

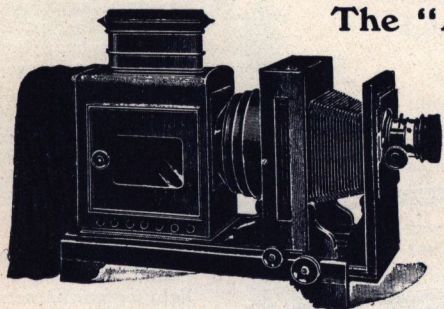
Camera Works: Blackheath.

SUPPLIED BY ALL

OUS LANTERNS

Enlarging Lanterns.

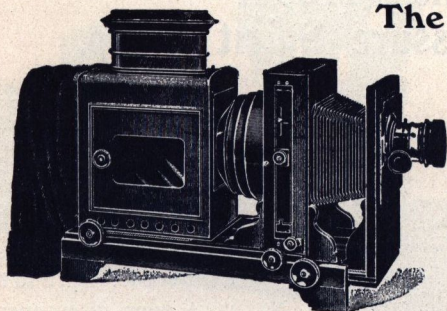
We are the leading manufacturers of enlarging apparatus, making a range of over 20 patterns of daylight and artificial light enlargers. Our handbook, "How Can I Enlarge?" contains full particulars of these and will be sent free on application.



The "Abbeydale."

An enlarger of original and practical design. Its principal feature is the Central swing carrier stage operated by a rack and pinion. Another noticeable point is the large roomy lantern body with collapsible back curtain. The woodwork is of polished oak.

	1/4-plate.	5x4 or Post-card.	1/2-plate.
Without Objective	£3 5 0	£4 0 0	£5 15 0
With Objective	4 0 0	5 0 0	7 0 0



The "Record."

The feature of this instrument is the separate rack and pinion systems provided to all movements. It has a carrier that swings, rises and tilts, actuated by racks, and rack adjustment to lantern body and lens board. It is made of selected walnut in an unusually heavy manner, and is the finest enlarger obtainable at the price.

	1/4-plate.	5x4 or Post-card.	1/2-plate.	1/2-plate.
Without Objective ..	£4 15 0	£5 15 0	£7 15 0	£13 5 0
With Objective	5 15 0	7 0 0	9 10 0	18 0 0

Farringdon Av., London, E.C.

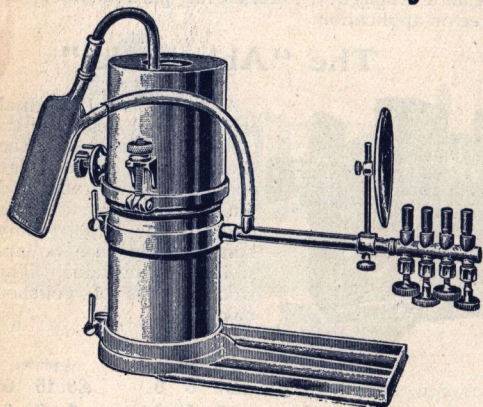
PHOTOGRAPHIC DEALERS.

Photo Mount Works: Copenhagen St.

Butcher's PORTABLE ILLUMINANTS.

The instruments illustrated herewith provide a simple means of obtaining a first-rate light at low cost and with the minimum of trouble.

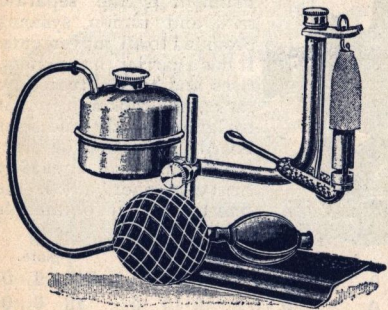
The "KLIMAX" Acetylene Generator.



This Generator has the great advantage of portability, packing into a small box for carrying. It gives a very fine light equal to 150 candle-power, and when once started requires little or no attention. Owing to its construction it is easily cleaned. Lump carbide is used, and one pound will supply light for four burners for two hours.

Price .. £2 0 0

The "META" High-Pressure Spirit Lamp.



As an illuminant this lamp is second only to the oxygen-hydrogen light. At a small cost an intense light, equal to 150 candle-power is obtained from methylated spirit. It is most simple to use, and is free from smell and smoke.

No. 0. As illustrated, made in polished brass..... 10/6

No. 1. A lamp of superior make and finish 15/0

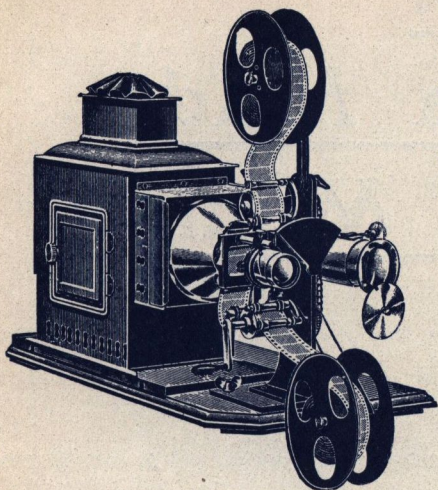
No. 1a. Similar to the No. 1, but holding 12 oz. spirit 18/0

W. BUTCHER & SONS Ltd.,

Camera Works : Blackheath, S.E.

SUPPLIED BY ALL F

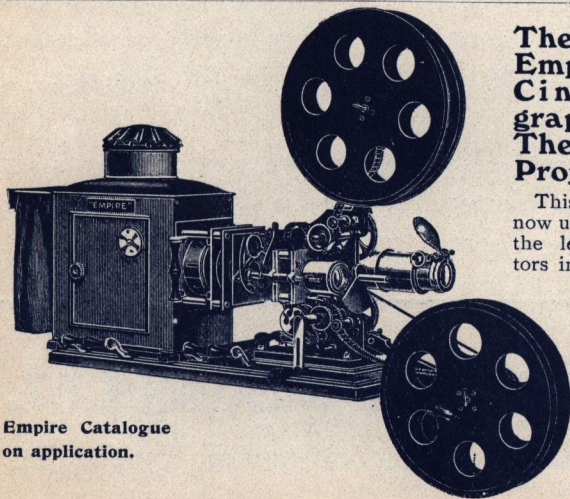
The "Empire" Cinematographs.



The No. 00 Empire Combination Cinematograph and Projection Lantern.

A first-rate living picture machine for home use, schools, bazaars, etc. It is an exact reproduction on a small scale of a regular machine for exhibition work. It takes the standard size films and can also be used as a magic lantern.

Complete, with cinematograph and lantern lenses,
£5 15 0



The No. 2 Empire Cinematograph. The Theatre Projector.

This machine is now used by most of the leading exhibitors in the country.

It embodies many novel features, principal among which is the new safety cut-off.

Price £35

Empire Catalogue
on application.

Farringdon Av., London, E.C.

PHOTOGRAPHIC DEALERS.

Photo Mount Works: Copenhagen St.

T. E. B.

British Made

Photo Mounts.

¶ We specially draw the attention of users of Photo Mounts to our unique facilities for their manufacture.



TRADE MARK.

¶ We have an immense range of patterns and styles, all our own exclusive design, suitable for every trade requirement. We can always deliver from stock.

¶ Professional Photographers are invited to write for samples, and compare our prices and quality with other makers. Remember our Mounts are all British made.

W. Butcher & Sons Ltd.

Camera House, Farringdon Avenue, London, E.C.

Mount Factory: King Cross, N.