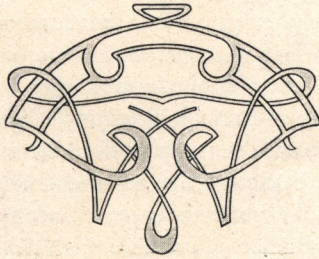




PREMO
CAMERAS

644-2938

THE PREMO CAMERA



ROCHESTER OPTICAL COMPANY
SUCCEEDED BY ROCHESTER OPTICAL AND CAMERA COMPANY
MANUFACTURERS, ROCHESTER, NEW YORK, U. S. A.

SUPREMACY OF PREMOS



PHOTOGRAPHIC perfection is realized in the Premo Camera, an instrument that is used successfully by novice and master of the art alike, for the every purpose of picture taking. The Premo Camera, of unequalled attainments, remarkable mechanical development, careful optical correction, embodies the perfect unity of all that is good in camera construction.

More than twenty-five years have elapsed since the world began saying "Premos produce perfect pictures." From those pioneer photographic days down to the present, each year Premo Cameras have held undisputed sway. Wherever photography is employed they are regarded as the standard cameras by which all other photographic instruments are judged. Perfect in design, perfect in construction, perfect in results, time has indeed raised them above competition. By common consent the supremacy of Premos is acknowledged.

Premos are made in many styles, all sizes, one quality. Designed for the beginner, the advanced amateur, the professional, they are all-around, ever-ready, adaptable instruments. From artistic portraiture to the highest tests of speed, they meet satisfactorily every condition. Premos excel because of their adjustments, skillful workmanship, and the best material.

In the construction of Premos each year has seen an apparent climax of perfection, in design, in equipment, and in finish. Succeeding years have witnessed these standards set aside and new ones established. Photographic possibilities unthought of have become successful realities. The added experience of another year has pointed the way to advancements of a substantial nature. Striking improvements calculated to increase the accuracy and capability of photographic instruments have been crystalized and perfected in Premo Cameras for 1903.

But it is the introduction of the Premo Film Pack, daylight loading, coupled with the pronounced success of R. O. C. The Rochester Dry Plate, which serve to emphasize still further the supremacy of Premos.

SUPREMACY OF PREMOS

The Premo Film Pack, a light-proof package, shaped very much like a plate holder, carries twelve films which may be successively presented for exposure by the simplest means. This Film Pack is for use in Premo Film Cameras, described in succeeding pages of this catalogue. Better than this, the Premo Film Pack converts plate cameras in which it is used into daylight-loading film cameras. In the operation of loading and unloading, and in the presenting of successive films for exposure, the Premo Film Pack is easily the simplest, quickest and most convenient device. It combines to a degree never equalled accuracy, ease of manipulation and speed. The Premo Film Pack means daylight photography with the perfect camera, the Premo.

The superiority of Premo Cameras long attested has been due to the fact that they were plate cameras. The convenience of daylight-loading film packages, however, has also been recognized. For the more serious and particular results the plate has always been preferred. For extended journeys and vacation trips the film has found great favor. When, however, there is added to the many advantages of the Premo the fact that the Premo Film Pack, daylight loading and containing twelve exposures, may be used with it just as a plate holder is used, then does the Premo become the ideal photographic instrument that modern science has sought to produce.

The universal recognition accorded R. O. C. The Rochester Dry Plate has also added to the supremacy of Premo Cameras. This plate has come to be recognized as the dry plate of general utility,—a product designed to best meet the average conditions that confront the amateur photographer. While the value of special plates for special purposes is fully realized, nevertheless in introducing R. O. C. The Rochester Dry Plate, we have presented a product that renders as closely as necessary the value of color, eliminates as nearly as possible the flare of halation, that gives the fullest depth, the most delicate definition, and yet is rapid enough for high-speed work.

Lenses of leading manufacture, carefully selected and rigidly

SUPREMACY OF PREMOS

tested, are fitted to Premos. Ross, Ltd., the oldest photographic opticians in England and the most progressive, manufacturers of photographic lenses of every character, have named this company as their exclusive representative in the United States. Hereafter the celebrated Ross lenses, and particularly the Homocentric lens—a product of unqualified merit—will be listed with Premo Cameras. This is but another evidence of Premo supremacy.

The several styles of Ross lenses are described briefly on subsequent pages of this catalogue. For those who are specially interested in the subject we have made a book which will be sent free upon application.

Premo Cameras are not sold without lenses and shutters. The reason for this is apparent at once. The Premo Camera, intended for the finer operations of photography, is a delicate instrument; before it leaves our factory, all parts that contribute to the efficiency of the apparatus have been brought into harmonious relation. We are unwilling to leave to other hands the fitting of the lens to the shutter or of lens and shutter to the camera, especially when our plant is most completely equipped for the purpose. Further than this, we are prepared ourselves to furnish all the lenses and shutters that are commonly used.

The prices listed in this catalogue are net except to regularly established dealers. The amateur and professional will save time and money by purchasing our goods of his local dealer. If the dealer should not have the style of Premo you desire to purchase, we will have pleasure in honoring your order, promptly, through him; or we will send the camera directly to you.

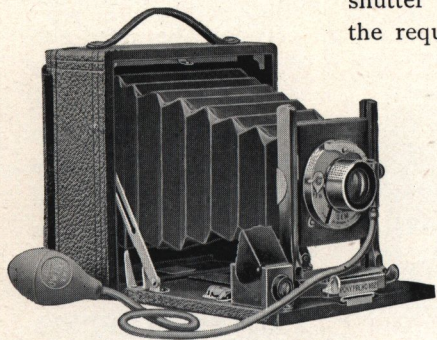
In ordering goods, always give shipping directions in full, unless you want us to use our discretion. Remittances should be made by draft on New York, post-office order, registered letter or express money order. Persons unknown to us and desiring to establish a line of credit will save delay by giving approved references.

PONY PREMO No. 2



PONY Premo No. 2, a most popular member of the celebrated Pony Premo Series, is a surpassingly dainty little instrument, substantial in construction and complete in every equipment.

It is preferred by the beginner because of its simplicity of manipulation, and on account of the variety of work it will do. Its equipment of lens and shutter is entirely adequate to the requirements of the operator.



The camera possesses all the essentials of a pleasure-giving photographic instrument.

It is made in two sizes, $3\frac{1}{4} \times 4\frac{1}{4}$ and 4×5 . The Premo Film Pack with proper adapter may be used in Pony Premo No. 2 and read-

ily converts this instrument into a daylight loading film camera carrying twelve exposures.

In symmetry, in compactness, as well as in all the necessities of equipment which go to make up the satisfactory photographic instrument Pony Premo No. 2 easily meets the average requirements. In all the wide range of camera building no photographic instrument presents more decided advantages when the price is considered.

SPECIFICATIONS: Dimensions, $5\frac{1}{4}$ " by $5\frac{1}{4}$ " by $2\frac{1}{2}$ " in the $3\frac{1}{4} \times 4\frac{1}{4}$ size, and 6 " by 6 " by $2\frac{1}{2}$ " in the 4×5 size. Draw, 7 " in the $3\frac{1}{4} \times 4\frac{1}{4}$ size, and $7\frac{1}{2}$ " in the 4×5 size. Box, mahogany, dovetailed, with piano hinge, covered with seal grain leather, and handle. Metal equipment, brass and nickel. Bellows, red Russia leather, lined. Front, rising and falling. Back, reversible, with aluminum panel, and ground glass screen. Finder, hooded, brilliant. Level, double spirit pattern. Tripod socket. Shutter, Gem, automatic, with bulb and hose attachment. Lens Rapid Rectilinear.

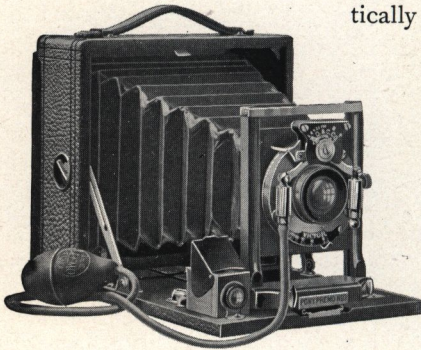
Outfit, including camera, one double Premo plate holder and carrying case:

$3\frac{1}{4} \times 4\frac{1}{4}$ size	\$13.00
4×5 size	13.00

PONY PREMO No. 3

THIS instrument corresponds closely to the model just described, except that it is equipped for a wider range of work. It meets the requirements of those desirous of a well equipped camera.

A feature of particular value to be noted is the vertical swing back, which may be easily adjusted at any angle and which is based on principles that are optically and mechanically correct.



It is to be noted also that this instrument has a distinctive reversible back, with an aluminum panel. This model is to be preferred on account of its rigidity, compactness and beauty of design.

Then, too, the Pony Premo No. 3 is fitted with the Victor shutter, which is capable of a wide range of work. The shutter, original in design, may be regulated for instantaneous, bulb or time exposure.

The Rapid Rectilinear lens, which forms a part of the equipment, will be found to be thoroughly satisfactory in every particular. The outfit, including the camera completely equipped, an artistic sole leather carrying case and one double plate holder, can not but appeal strongly to the amateur and professional alike. Its picture producing capabilities are responsible for the favor in which it is held. It is made in one size only, 4 x 5.

SPECIFICATIONS: Dimensions, 6" by 6" by 2½". Draw 7". Box, mahogany, dovetailed, with piano hinge, covered with seal grain leather, and handle. Metal equipment, nickel and brass. Bellows, red Russia leather, lined. Front, rising and falling. Back, reversible, with ground glass screen and aluminum panel. Swing back, vertical. Brilliant view finder. Level, double spirit pattern. Tripod socket. Lens, Rapid Rectilinear. Shutter, Victor with bulb and hose attachment. One double plate holder.

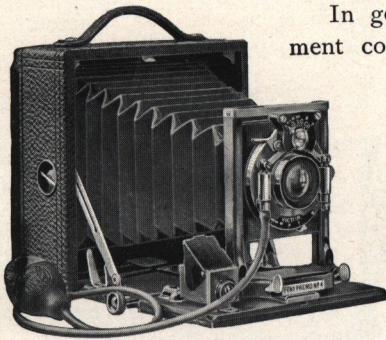
PRICE

4x5

Outfit Complete \$18.00

PONY PREMO No. 4

THIS instrument embraces desirable features, which appeal alike to the beginner and the advanced amateur. Besides possessing the points of advantage common to cameras of the Premo series already described, it is equipped with Victor shutter and the Symmetrical lens.



In general, the details of equipment conform to the specifications outlined for Pony Premo No. 3. The camera, however, presents additional adjustments and offers the opportunity for rare pleasure in picture taking to all who possess it.

The superior rack and pinion focusing adjustment, which admits of a wide latitude of work, especially commends this camera to the attention of the prospective purchaser. It is made in two sizes, 4x5 and 5x7. Outfit included in sole leather case, with extra compartment.

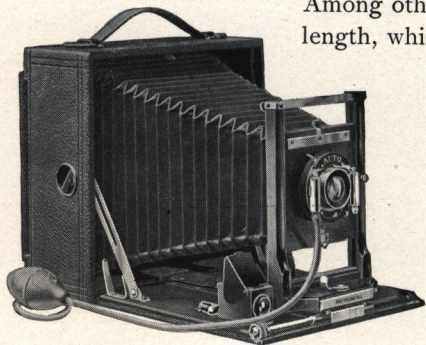
SPECIFICATIONS: Dimensions, 6" by 6" by 2 $\frac{3}{4}$ " in 4 x 5 size; 8 $\frac{1}{4}$ " by 8 $\frac{1}{4}$ " by 3 $\frac{1}{4}$ " in 5 x 7 size. Draw, 9" in 4 x 5 size; 13" in 5 x 7 size. Box, mahogany, dovetailed, with piano hinge. Back, reversible with aluminum panel. Metal work, brass and nickel. Bellows, Russia leather, lined. Rack and pinion focusing attachment. Front, rising and falling, with Auto clamp and Universal stop. Central swing. Lens, Symmetrical. Shutter, Victor. Finder, brilliant, hooded. Level, double spirit. One double plate holder.

	4 x 5	5 x 7
Camera complete, Victor shutter and Symmetrical lens	\$22.00	\$30.00
With Ross Homocentric lens, Series C, F: 6.3 No. 3 and 5	50.00	75.00
With Ross Homocentric lens, Series D, F: 8, No. 3 and 5	47.00	68.00
With B. & L. Plastigmat, F: 6.8, No. 2 and 3	58.00	72.00
With Goerz Dbl. Anastigmat, Ser. III, F: 6.8, No. 1 and 2	63.00	75.50
With Goerz Double Anastigmat, Series III, F: 6.8, No. 3	86.50
With Voigtlander Collinear, Ser. III, F: 6.8, No. 2a and 3a	53.00	74.00
With Turner-Reich, Series II, F: 7.5, No. 1 and 2	58.00	72.00
With Verastigmat, F: 6.8, No. 1 and 2	58.00	72.00
Wide Angle lens, extra	7.00	8.00
NOTE. —This camera is furnished with stereo equipment in 5 x 7 size:		
With B. & L. Stereo diaphragm shutter, R. R. lenses	56.00
With Automatic Stereo Shutter, R. R. lenses	54.00

PONY PREMO No. 5

THIS camera is more pretentious in design and in equipment than any of the Premo series already described, incorporating every feature necessary to meeting satisfactorily the average conditions that confront the photographer. It is in all respects a business camera, designed for the use of

professionals as well as amateurs. Among other things it has great focal length, which increases its value for the purposes of general photography. The draw is manipulated by a fine rack and pinion focusing attachment, insuring perfect adjustment.



The camera has, beside, a double extension bed and detachable lens board, features not in-

corporated in the members of this series already mentioned. The equipment, too, is different. The Auto self-setting shutter, involving entirely new principles, with the Planatograph lens, is fitted to Pony Premo No. 5.

The superiority of equipment, and especially in the matter of lens and shutter, has caused Pony Premo No. 5 to become widely popular with advanced amateurs. Where it is necessary to produce the most accurate record of events, this camera has found marked favor.

The Auto shutter, with which the camera is fitted, is an accredited production capable of a wide range of work. It is so perfect in construction as to eliminate the possibility of derangement and is absolutely guaranteed. It is, as the name implies, automatic in photographic exposure; that is, self-acting and ever ready for use, no setting device being required. The Auto not only combines the automatic feature, but the retarding device as well. Not the least important feature in connection with the Auto shutter is the fact that it is self-inclosed.

PONY PREMO No. 5

The Planatograph lens, which is regularly equipped with Pony Premo No. 5, is a pronounced optical success. It is adapted to landscape, architectural and instantaneous photography. It has unusual crispness of definition, great covering capacity and depth. The lens is of the double symmetrical type.

Pony Premo No. 5 is made in three sizes, 4 x 5, 5 x 7 and 6½ x 8½. The complete outfit is contained in a handsome, black sole-leather case, accommodating the camera in one end and the plate holders in the other. One Premo double plate holder is included.

SPECIFICATIONS: Dimensions, 6¼" by 6" by 2¾" in 4 x 5 size; 8½" by 8¼" by 3½" in 5 x 7 size; 10" by 10" by 4" in 6½ x 8½ size. Draw, 11" in 4 x 5 size; 15" in 5 x 7 size; 18" in 6½ x 8½ size. Box, mahogany, dove-tailed, with piano hinge, covered with seal grain leather, and handle. Metal equipment, brass and nickel. Bellows, red Russia leather, lined, with rings. Front, rising and falling, with Auto clamp; removable lens board; rack and pinion. Back, reversible, with ground glass screen and aluminum panel; central swing back. Finder, brilliant, hooded. Level, double spirit level. Tripod socket. Shutter, Auto, with bulb and tube. Lens, Planatograph. Carrying case. One double plate holder.

PRICES

	4 x 5	5 x 7	6½ x 8½
Camera complete, with Auto shutter and Planatograph lens	\$25.00	\$33.00	\$45.00
With Ross Homocentric lens, Series C, F: 6.3, No. 3, 5 and 6	52.00	77.50	105.00
With Ross Homocentric lens, Series D, F: 8, No. 3, 5 and 6	49.00	70.50	94.00
With Bausch & Lomb Plastigmat, F: 6.8, No. 2, 3 and 5	60.00	74.50	111.00
With Goerz Double Anastigmat, Series III, F: 6.8, No. 1, 2 and 4	65.00	78.00	111.50
With Goerz Double Anastigmat, Series III, F: 6.8, No. 3	..	89.00	..
With Voigtlander Collinear, Series III, F: 6.8, No. 2a, 3a and 5	55.00	77.00	108.50
With Turner-Reich, Series II, F: 7.5, No. 1, 2 and 4	60.00	75.00	111.00
With Verastigmat, F: 6.8, No. 1, 2 and 4	60.00	75.00	111.00
Wide Angle lens, extra	7.00	8.00	12.00
Volute shutter, in place of Auto, extra	10.00	12.00	15.00

NOTE.—This Camera is furnished with stereo equipment in the 5 x 7 size:

With Bausch & Lomb stereo diaphragm shutter, R. R. lenses
 60.00 | .. | .. |

With Automatic Stereo shutter, R. R. lenses
 57.00 | .. | .. |

PONY PREMO No. 6

IN finer adjustments, and in the greater number of them, is Pony Premo No. 6 distinguished from the preceding members of the Premo series. The camera is designed especially for particular work. It is to be preferred in landscape, interior and architectural photography. It represents the best product of human skill and selected material. In its construction nothing



has been spared to attain the pinnacle of perfection in camera making. It has an intrinsic value and an adaptability that stamp it as an instrument in a class by itself. This instrument affords an apt illustration of camera

building ingenuity. Designed for fast work under all conditions, it is a marvel of rigidity. Pony Premo No. 6 combines the important requisites of elegance and durability and is particularly easy of manipulation.

For copying or other work requiring the use of long focus lenses, the instrument is especially suited. It has an automatic double acting rack and pinion, together with double extension bed. One pinion only is used to rack out both beds, the top bed, or extension, locking itself to the bottom bed or extension automatically as the pinion is turned forward, and unlocking automatically as the camera front is racked back to position. A clever locking device for the rack and pinion on the bed, together with the universal stop, are prominent features. This instrument has a swing back, adjusted at centers, optically correct, and so arranged that a clamp at the side operates it.

It is supplied with a reversible back, for convenience in taking either horizontal or vertical views; rising front for regulating sky or foreground; an aluminum panel for focusing; brilliant hooded view finder, accurately showing the view as it

PONY PREMO No. 6

will appear on the finished print; double spirit level of unique design, and two sockets for use with the tripod. The Auto shutter, working on purely automatic principles, fitted with Iris diaphragm, finger and pneumatic release, hose and bulb attachment, for time, bulb and instantaneous exposures, forms a prominent part of the outfit.

We supply Pony Premo No. 6 regularly with the Planatograph lens. A black sole leather, velvet lined, carrying case, with handle, and one Premo plate holder comprise the outfit. This camera is made in three sizes, 4 x 5, 5 x 7, 6½ x 8½.

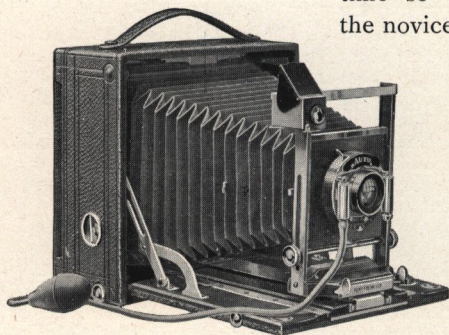
SPECIFICATIONS: Dimensions, 6¼" by 6" by 3½" in 4 x 5; 8¼" by 8½" by 4" in 5 x 7; 10" by 10" by 5" in 6½ x 8½. Draw, 15" in 4 x 5; 20" in 5 x 7; 24" in 6½ x 8½. Box, mahogany, dovetailed, piano hinge, covered with seal grain leather, with handle. Metal equipment, brass and nickel. Bellows, red Russia leather, lined, with rings. Front, rack and pinion adjustment, also rising and falling, with universal stop. Focusing adjustment, rack and pinion, double acting, automatic; back, reversible, with spring actuated ground glass screen. Aluminum panel. Central swing back. Finder, hooded, brilliant. Level, double spirit pattern. Removable lens board. Two tripod sockets. Shutter, Auto. Lens, Planatograph. Sole leather carrying case, velvet lined, and one plate holder.

PRICES

	4 x 5	5 x 7	6½ x 8½
Camera complete, Auto Shutter and Planatograph Lens	\$35.00	\$ 45.00	\$ 60.00
With Ross Homocentric lens, Series B, F: 5.6, No. 3, 5 and 6	72.00	98.00	135.00
With Ross Homocentric lens, Series C, F: 6.3, No. 3, 5 and 6	60.00	87.00	117.00
With Ross Homocentric lens, Series D, F: 8, No. 3, 5 and 6	57.00	80.00	106.00
With Bausch & Lomb Plastigmat, F: 6.8, No. 2, 3 and 5	68.00	84.00	123.00
With Bausch & Lomb Zeiss Series VIIa, F: 7, No. 3, 8 and 12	87.50	111.00	163.50
With Goerz Double Anastigmat, Series III, F: 6.8, No. 1, 2 and 4	73.00	87.50	123.50
With Goerz Double Anastigmat, Series III, F: 6.8, No. 3	98.50	..
With Voigtlaender Collinear, Series II, F: 5.6, No. 3, 4 and 6	74.00	98.00	155.00
With Turner-Reich, Series II, F: 7.5, No. 1, 2 and 4	68.00	84.00	123.00
With Verastigmat, F: 6.8, No. 1, 2 and 4	68.00	84.00	123.00
Wide Angle Lens, extra	7.00	8.00	12.00
Volute Shutter in place of Auto, extra	10.00	12.00	15.00
NOTE.—This Camera is furnished with stereo equipment in the 5 x 7 size:			
With Bausch & Lomb stereo diaphragm shutter, R. R. lenses	72.00	..
With Automatic stereo shut'r, R. R. lenses	68.00	..

PONY PREMO No. 7

IN design, in equipment and construction the Pony Premo No. 7 represents all that is best in camera making. A symposium of advanced mechanical ideas, it is an instrument embodying symmetry and strength, capable of producing photographic masterpieces in every field of effort, and at the same time so easy of manipulation that the novice cannot fail to understand



it. The distinguishing characteristics and special features of Pony Premo No. 7 command attention at once.

Applicable alike to the purposes of serious photography and vacation trips, it is a camera of unequalled photographic possibilities.

It is not only in the general design of the instrument, but in the marvelous ingenuity in which all details of equipment are made to harmonize and in the positive and perfect working of each part, the Pony Premo No. 7 excels. It is compact and self-contained in every particular.

Among its most noticeable and exclusive features are to be mentioned the triple extension bed, made entirely of metal, with automatic locking device. This bed is entirely independent of the wooden bed underneath, being supported on angle pieces, and is not affected by atmospheric conditions; a split and drop bed, based on entirely new principles, making it possible to use lenses of any angle with facility; an automatic bridge, making a perfect runway for the front of the camera; a universal stop attachment whereby the front on being drawn out comes to universal focus; and a rack and pinion swing back operated on a distinctly new principle.

With its superior equipment, its marvelous accuracy, its unlimited scope, Pony Premo No. 7 is indeed a masterpiece of

PONY PREMO No. 7

camera construction. Built along the most advanced mechanical lines, it is a camera of unlimited possibilities. Photographers of every degree of proficiency will find this instrument most gratifying and satisfactory for the every purpose of the art.

It is beyond the power of pen or picture to portray adequately the merits of this camera. It must be seen to be appreciated.

Pony Premo No. 7 is made in three sizes, 4 x 5, 5 x 7, 6½ x 8½. Outfit includes leather carrying case, velvet lined.

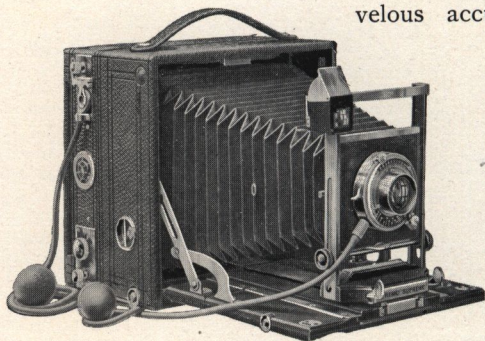
SPECIFICATIONS: Dimensions, 6¾" by 6½" by 3½" in 4 x 5; 8½" by 8½" by 4" in 5 x 7; 9¾" by 9¾" by 5" in 6½ x 8½. Draw, 14½" in 4 x 5; 19½" in 5 x 7; 22½" in 6½ x 8½. Box, mahogany, dovetailed, covered with Girard leather, with handle and piano hinge. Metal equipment, brass and nickel. Bellows, red Russia leather, lined, with rings. Front, metal, rack and pinion, rising and locking, with Auto clamping device and universal stop. Rack and pinion locking focusing adjustment. Bed, split, wood and metal, with hinge stand. Wide angle attachment and continuous runway. Back, reversible, with aluminum panel. Central swing back, operated by locking rack and pinion. Finder, brilliant, hooded. Level, double spirit pattern. Removable lens board. Two tripod sockets. Shutter, Auto. Lens, Planatograph. Case, sole leather, velvet lined.

PRICES

	4 x 5	5 x 7	6½ x 8½
Camera Complete, Auto Shutter and Planatograph lens	\$48.00	\$ 60.00	\$ 75.00
With Ross Homocentric lens, Series B, F: 5.6, No. 3, 5 and 6	83.00	110.00	147.00
With Ross Homocentric lens, Series C, F: 6.3, No. 3, 5 and 6	71.00	99.00	129.00
With Ross Homocentric lens, Series D, F: 8, No. 3, 5 and 6	68.00	92.00	118.00
With Bausch & Lomb Plastigmat, F: 6.8, No. 2, 3 and 5	79.00	96.00	135.00
With Bausch & Lomb Zeiss Series VIIa, F: 7 No. 3, 8 and 12	98.50	123.00	175.50
With Goerz Double Anastigmat, Series III, F: 6.8, No. 1, 2 and 4	84.00	99.50	135.50
With Goerz Double Anastigmat, Series III, F: 6.8, No. 3	110.50
With Voigtlander Collinear, Series II, F: 5.6, No. 3, 4 and 6	85.00	110.00	167.00
With Turner-Reich, Series II, F: 7.5, No. 1, 2 and 4	79.00	96.00	135.00
With Verastigmat, F: 6.8, No. 1, 2 and 4	79.00	96.00	135.00
Wide Angle lens, extra	7.00	8.00	12.00
Bausch & Lomb Zeiss Series V, Wide Angle lens, extra	22.50	22.50	28.00
Volute Shutter instead of Auto, extra	10.00	12.00	15.00

PREMO SUPREME

THE Premo Supreme is the most advanced type of camera the world has ever seen. In design, in construction and in equipment, it represents the utmost possibility of excellence, the supreme degree of quality. Designed for the finer operations of photography, it possesses the greatest refinement of delicate detail, of marvelous accuracy, of wonderful



adjustment. The best the world affords in metals, in leather, in lenses, in shutters, is combined in its make-up.

The Premo Supreme meets satisfactorily every photographic condition that confronts the amateur or professional. It is regularly equipped with the Ross Homocentric lens, Series C, fitted to the Volute shutter. The celebrated Thornton-Pickard Focal Plane shutter is incorporated as a part of the camera. This shutter is designed for high-speed work, and when not in use may be removed from the camera entirely.

In every detail of equipment and finish the Premo Supreme displays ingenuity, knowledge and experience in camera making. It possesses a wealth of exclusive features, which commend it at once to the attention of those desirous of obtaining an instrument of unlimited qualities and attainments.

Among the noticeable features of the Premo Supreme are to be mentioned the superior construction of its bed, which accommodates lenses of every angle with equal facility; a swing back of distinctive character; the automatic bridge, which allows the front to slide smoothly throughout the whole length of the draw; the metal bed, of peculiar and perfect mechanism; a removable lens board, large enough

PREMO SUPREME

to permit the fitting of any lens without the cutting down of the flange or injuring at all the appearance of the front.

Indeed, in the Premo Supreme has been crystallized every photographic idea that tends to increase the accuracy of a camera. It is the highest exponent of camera-making science. The camera is made in three sizes, 4 x 5, 5 x 7, and 6½ x 8½.

SPECIFICATIONS: Dimensions, 6¼" by 6¼" by 3½" in 4 x 5 size, 8½" by 8½" by 5½" in 5 x 7 size, 9¾" by 9¾" by 6¾" in 6½ x 8½ size. Draw, 14½" in 4 x 5, 19" in 5 x 7, 22½" in 6½ x 8½. Camera box, mahogany, dove-tailed, piano hinge, covered with genuine seal leather, with handle. Metal parts, Damasked nickel. Bellows, genuine black Persian Levant leather, lined, with rings. Front, rack and pinion, rising and falling and locking, with automatic locking clamp and universal stop. Back, reversible, with aluminum panel. Bed, split and drop, with piano hinge and detachable short-bed adjustment, with triple extension and bridge. Swing back, central, with rack and pinion, operating with a key-clamping device. Finder, iconoscope. Level, double spirit pattern. Lens board, removable, two tripod sockets. Shutters, Volute and Thornton-Pickard Focal plane. Lens, Ross Homocentric, Series C. Carrying case, Girard leather, velvet lined, re-enforced, with lock and key. Three double mahogany plate holders.

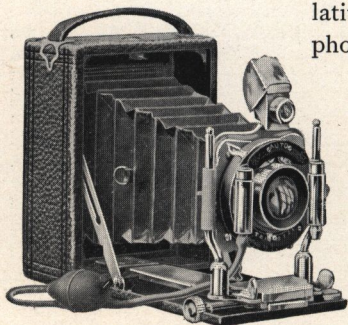
PRICES

Camera Complete, Volute Shutter, T.-P.	4 x 5	5 x 7	6½ x 8½
Focal Plane Shutter,			
With Ross Homocentric lens, Series C,			
F: 6.3, No. 3, 5 and 6	\$127.00	\$167.00	\$209.00
With Ross Homocentric lens, Series B,			
F: 5.6, No. 3, 5 and 6	139.00	178.00	227.00
With Ross Homocentric lens, Series D,			
F: 8, No. 3, 5 and 6	124.00	160.00	198.00
With Bausch & Lomb Plastigmat lens,			
F: 6.8, No. 2, 3 and 5	135.00	164.00	215.00
With Bausch & Lomb-Zeiss lens Series			
VIIa, F: 7, No. 3, 8 and 12	155.00	191.00	256.00
With Goerz Double Anastigmat lens,			
Series III, F: 6.8, No. 1, 2 and 4	140.00	168.00	216.00
With Goerz Double Anastigmat lens,			
Series III, F: 6.8, No. 3	179.00
With Voigtlander Collinear lens, Series			
II, F: 5.6, No. 3, 4 and 6	142.00	178.00	225.00*
With Turner-Reich lens, Series II, F: 7.5,			
No. 1, 2 and 4	135.00	164.00	215.00
With Verastigmat lens, F: 6.8, No. 1, 2 and 4	135.00	164.00	215.00
Bausch & Lomb-Zeiss, Series V, W. A. lens,			
extra	22.50	22.50	28.00

* Fitted with Auto Shutter.

POCKET PREMO

THE Pocket Premo is the latest of the famous Premo series and the most perfect pocket photographic instrument ever offered to the public. It is not merely a snapshot camera, but a thoroughly equipped instrument, allowing the operator the widest latitude in every branch of artistic photography.



The Pocket Premo possesses merits in construction that are the more appreciated by the camera owner the more he uses his camera. Mechanical ingenuity and careful study have combined in the Pocket Premo all the essentials of picture making.

The camera weighs but little, and may be carried readily in the pocket. It is at once the easiest and surest photographic instrument for exposing plates or films.

It has back of it the experience of twenty-five years of camera making and is designed and manufactured by the world's recognized experts in this line of effort. The Pocket Premo is at once compact, completely equipped, and capable of the widest range of work. It has come into being as the result of tireless effort, skill in manufacture and the best material. In its symmetry and simplicity it is unequalled. In its construction nothing has been sacrificed to compactness. Without doubt it is the most convenient instrument for universal use.

The Pocket Premo measures $5 \times 3\frac{3}{4} \times 2\frac{1}{8}$ inches, is equipped with the Planatograph lens and Auto shutter. It not only possesses every requisite for the making of perfect pictures with plates, but each instrument is equipped with a special adapter, which replaces the regular back and which adapts the camera to use with the Premo Film Pack.

The Pocket Premo is thus not only a daylight loading film

POCKET PREMO

camera, carrying within itself twelve film exposures, but at the same time is a perfect pocket plate camera, distinguished in every detail by the highest quality. Whatever is best in lens and shutter and adjustment has been incorporated in this instrument. Adapted as it is to a wide range of photographic effort, it remains, nevertheless, a pocket camera, combining lightness, strength, accuracy, with the ability to carry in the most compact form both plate and film exposures.

Portraiture, time and instantaneous exposures all come within its scope, while its manipulation when using films or plates is so easy that the novice cannot fail to understand the camera and its workings. In construction it is a happy combination of mahogany and aluminum, with an aluminum panel in the back for focusing. All the working parts of the camera are metal. As will be seen from the accompanying illustration, the instrument is remarkably handsome and clean cut in appearance. It has an exceptionally long draw considering the size of the camera, and a rack and pinion focusing attachment. Indeed, every equipment that could be fitted to a perfect pocket camera with pleasure and profit to the operator is to be found in the Pocket Premo. It is made in one size only, $3\frac{1}{4} \times 4\frac{1}{4}$.

SPECIFICATIONS: Dimensions, $5'' \times 3\frac{3}{4}''$ by $2\frac{1}{8}''$. Draw, $5\frac{3}{4}''$. Box, mahogany and aluminum, with aluminum bed and back and piano hinge, covered with Girard leather, and handle. Metal equipment, brass and nickel. Bellows, red Russia leather, lined. Front, metal, rising and falling, with Auto clamp and universal stop. Rack and pinion for focusing, with locking device. Back, removable, with ground glass and aluminum panel. Finder, brilliant, hooded. Tripod socket. Shutter, Auto. Lens, Planatograph. One single plate holder. One Premo film adapter.

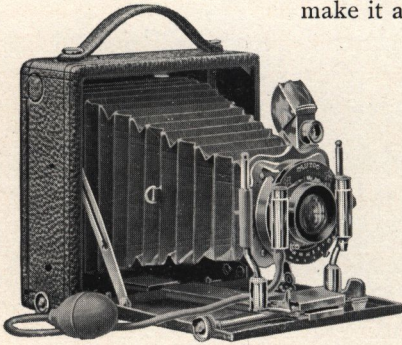
PRICES

	$3\frac{1}{4} \times 4\frac{1}{4}$
Camera complete, Auto Shutter and Planatograph lens	\$20.00
With Ross Homocentric lens, Series C, F: 6.3, No. 1	45.00
With Ross Homocentric lens, Series D, F: 8, No. 1	41.50
With Bausch & Lomb Plastigmat, F: 6.8, No. 1	50.00
With Bausch & Lomb Zeiss Series VIIa, F: 7, No. 2	70.50
With Verastigmat, No. 0, F: 6.8	50.00
With Goetz Double Anastigmat, Series III, F: 6.8, No. 0	53.50
With Voigtlander Collinear, Series III, F: 6.8, No. 2	48.50

STAR PREMO

THIS new Premo is essentially a tourists' camera, a model of compactness, mechanical excellence and perfect detail in finish and equipment. For automobile trips, for extended journeys, in short, for the perfect enjoyment of photography under all conditions, the Star Premo excels. The instrument is a distinct departure in camera construction.

It possesses characteristics which make it a notable addition to the celebrated Premo series. There is a wealth of theoretical knowledge, of practical experience in its make-up. It typifies progress in camera building. Its construction is such as to simplify the operations of photography, incorporating the greatest number of important features in the least



space. The Star Premo meets successfully the every requirement of photography. Its equipment is the most accurate, the most delicate.

Used as a plate camera it is at once the most complete and compact photographic instrument ever designed. With the addition of the Premo film adapter and the Premo film pack the Star Premo becomes a daylight loading film camera, carrying twelve film exposures, without increasing the bulk or weight of the instrument.

The fact that the Star Premo uses either film or glass plates cannot be too strongly emphasized. The change from one to the other is quickly and conveniently made. Again, when the Film Pack is used with the adapter, which is similar in size to the plate holder, it is possible at all times to focus with the ground glass. To the amateur who particularly wants to use films this is indeed an important consideration.

The description of the Star Premo is necessarily inade-

STAR PREMO

quate. The instrument has to be seen to be appreciated. Speaking generally, the fact that all working parts of the camera are metal, is one of its greatest points of excellence. The substantial character and lasting qualities of the camera, and its readiness for use under all conditions of atmosphere, must be apparent. A reversible back, possessing distinctive features, is also a feature of the Star Premo.

In operation each and every equipment of the Star Premo is positive and simple. The screw and pinion swing and rack and pinion focusing attachment are each locking, as is also the automatic bed clamp, by which the front is drawn out on the bed of the instrument. The bed itself is aluminum, as is also the focusing door in the back. The instrument is covered with a specially designed Girard leather and is a model of beauty, strength and accuracy.

This camera is made in two sizes, $3\frac{1}{4} \times 4\frac{1}{4}$ and 4×5 . Each outfit consists of the camera and one double plate holder, with velvet lined carrying case.

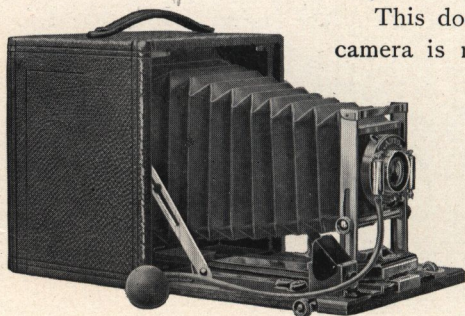
SPECIFICATIONS: Dimensions, $2\frac{1}{4}''$ by $5\frac{1}{4}''$ by $5\frac{1}{4}''$, in $3\frac{1}{4} \times 4\frac{1}{4}$ size, $2\frac{1}{2} \times 6\frac{1}{4} \times 6\frac{1}{4}$ in 4×5 size. Draw, $7''$ in $3\frac{1}{4} \times 4\frac{1}{4}''$, $8''$ in 4×5 size. Box, mahogany, covered with Girard leather, with handle. Metal equipment, nicked brass. Bellows, red Russia leather, lined. Front, metal, rising and falling, with Auto clamp and universal stop. Back, reversible, with ground glass screen and aluminum door for focusing. Pinion swing back, with automatic locking device. Rack and pinion focusing adjustment, with automatic locking device. Bed, covered aluminum; finder, brilliant, hooded. Lens, Planatograph. Shutter, Auto, full nicked. Carrying case, special grain sole leather, velvet lined.

PRICES

	$3\frac{1}{4} \times 4\frac{1}{4}$	4×5
Camera complete, Auto Shutter and Planatograph lens,	\$25.00	\$25.00
With Ross Homocentric lens, Series C, F: 6.3, No. 1 and 3	49.00	52.00
With Ross Homocentric lens, Series D, F: 8, No. 1 and 3	45.50	49.00
With Bausch & Lomb Plastigmat, F: 6.8, No. 1 and 2	54.00	60.00
With Bausch & Lomb-Zeiss, Series VIIa, F: 7, No. 2 and 3	74.50	79.50
With Turner-Reich Series II, F: 7.5, No. 1	60.00	60.00
With Verastigmat, F: 6.8, No. 0 and 1	54.00	60.00
With Goerz Double Anastigmat, Series III, F: 6.8, No. 0 and 1	57.50	65.00
With Voigtlander Collinear, Ser. III, F: 6.8, No. 2 and 2a	52.50	55.00

LONG FOCUS PREMO

AS its name indicates the Long Focus Premo is designed more especially for scientific photography and for copying. It has found great favor with advanced amateurs and professionals, and is adapted to the widest range of work of this nature. It is invaluable in surgery, biology and in chemistry as well as in the arts.



This does not mean that the camera is not available for the ordinary purposes of photography. Indeed, for the average amateur work it may be used with pronounced success with any of the regular lenses, while it is built es-

pecially for long focus and tele-photo work.

In the Long Focus Premo the extra draw bellows necessary to accommodate the proper lenses is obtained by means of a folding back. Thus the bellows may be drawn out in each direction. The draw is operated at the rear, as well as at the front, by a rack and pinion focusing attachment. There is also a rack and pinion double swing back attached to the camera, so constructed that the horizontal and vertical swings both oscillate at the center of the plate. These horizontal and vertical swings are peculiar to this instrument alone.

The Long Focus Premo is further distinguished by the fact that it has an exceptionally long draw. Its construction permits of the use of lenses of the very longest focus, as well as those ordinarily furnished. It is to be noted that the camera may be equipped with the Thornton-Pickard Focal Plane Shutter, the shutter becoming a component part of the instrument.

The automatic clamping device on the bed, together with piano hinges in the front and back, are notable features of excellence. The Long Focus Premo is equipped with the

LONG FOCUS PREMO

Tele-Photo three focus lens, which may be used in combinations or separately, producing a variety of desirable results.

In using one combination only of the Tele-photo three focus lens, the front lens may be removed and the rear lens employed alone. In effect, this practically doubles the length of focus and the corresponding view. The length of focus can be further increased by removing the rear lens and using the front lens in its place. The camera is made in three sizes, 5 x 7, 6½ x 8½ and 8 x 10.

SPECIFICATIONS: Dimensions, 10¾" by 10½" by 7" in 5 x 7 size. 11¾" by 12½" by 8½" in 6½ x 8½ size. 13¾" by 14" by 10" in 8 x 10 size. Draw, 3¼" in 5 x 7 size; 41" in 6½ x 8½ size; 47" in 8 x 10 size. Box, mahogany, dovetailed, covered with elephant grain leather, two piano hinges, and handle. Metal equipment, brass and nickel. Bellows, red Russia leather, lined. Front, rack and pinion rising and falling. Back, reversible; swing back, rack and pinion. Panel for focusing. Rack and pinion front and back extension. Clamping device, front and rear. Lens board removable. Rack and pinion, vertical swing, also horizontal swing. Drop bed for the use of wide angle lens. View finder, brilliant, hooded. Level, double spirit pattern. Shutter, Auto, bulb and hose attachment. Lens, Tele-photo three focus. One double plate holder.

PRICES

	5 x 7	6½ x 8½	8 x 10
Camera complete, Auto Shutter and Three-focus lens	\$ 55.00	\$ 70.00	\$ 90.00
With Ross Homocentric lens, Series B, F: 5.6, No. 5, 6 and 7	106.00	143.00	196.00
With Ross Homocentric lens, Series C, F: 6.3, No. 5, 6 and 7	95.00	125.00	163.00
With Ross Homocentric lens, Series D, F: 8, No. 5, 6 and 7	88.00	114.00	148.50
With Bausch & Lomb Plastigmat, F: 6.8, No. 3, 5 and 6	92.00	131.00	162.00
With Bausch & Lomb Zeiss Series VIIa, F: 7, No. 8, 12 and 17	119.00	171.50	239.50
With Goerz Double Anastigmat, Series III, F: 6.8 No. 2, 4 and 6	95.50	131.50	179.00
With Goerz Double Anastigmat, Series III, F: 6.8, No. 3	106.50
With Voigtlaender Collinear, Series II, F: 5.6 No. 4 and 6	106.00	163.00	..
With Turner-Reich, Series II, F: 7.5, No. 2, 4 and 5	92.00	131.00	162.00
With Verastigmat, F: 6.8, No. 2, 4 and 5	92.00	131.00	162.00
Wide Angle Lens, extra	8.00	12.00	16.00
Bausch & Lomb Zeiss, Series V, Wide Angle Lens, extra	22.50	28.00	35.00
Volute Shutter in place of Auto, extra	12.00	15.00	..

PREMO FILM CAMERAS

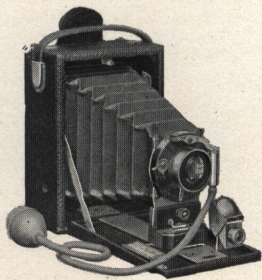
THESE dainty cameras are designed to accommodate the Premo Film Pack, daylight loading, which carries twelve film exposures. Beyond all question Premo Film Cameras are the quickest-loading film cameras on the market, as well as being the easiest to operate. At the back of each style of Premo Film Camera is a metal door, held in place by spring catches, which may be opened by pressure. Place the Film Pack in the camera and shut the door. The instrument is then ready for picture taking. The film exposures are presented successively by drawing out and tearing off, one by one, the back paper tabs. When the Pack is exhausted it may be removed from the camera in daylight.



The instrument illustrated here-with is the Premo Film Camera, box style. In equipment it corresponds closely to the Cyclone Jr., which is described on another page. The camera has a single Achromatic lens, with

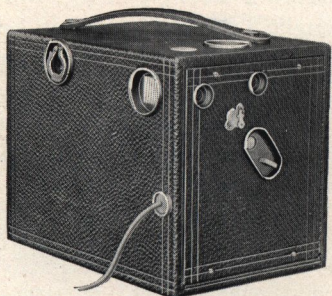
an Automatic shutter and brilliant view finder. It is made in $3\frac{1}{4} \times 4\frac{1}{4}$ size, price \$4.00. Other sizes in process of construction.

The Premo Folding Film Camera is a more pretentious instrument, designed for a wider range of photographic effort. As will be seen from the picture it is a very complete and compact little instrument. The back of the camera is identical with that of the box instrument just described, and the camera is loaded as easily with the Film Pack. The camera is made in $3\frac{1}{4} \times 4\frac{1}{4}$ size, price \$10.00, and is equipped with a Gem shutter and Rapid Rectilinear lens. Its adjustments are perfectly adequate to satisfactory picture making. Other sizes of this new instrument are in process of construction.



CYCLONE CAMERA

FOR more than a decade the Cyclone Magazine Camera has enjoyed the enviable reputation of being the only satisfactory fixed focus magazine camera on the market. So perfect in equipment, so simple in manipulation, is the Cyclone Magazine that the youngest amateur can use it with



marked success. The instrument is so constructed that it carries twelve plates or twelve cut films, enabling the operator to make twelve pictures without opening the camera to change the plate or film.

The Cyclone Magazine Camera is best described by referring to its operation. In taking a picture, but two simple move-

ments are required: pressing the bulb or button exposes the plate; turning the key presents a fresh plate for exposure. As will be seen by referring to the accompanying illustration, the instrument is devoid of complications; a camera easy to understand.

The Cyclone is equipped with an automatic shutter, a most satisfactory lens, and brilliant view finders. The construction of the instrument is such that the aluminum plate holders containing the exposed plates may be removed from the camera without injury to the plates unexposed.

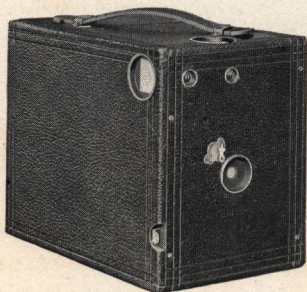
The Cyclone Magazine is very substantially made and is especially adapted to severe usage. It is a photographic instrument without limitations in the field which it covers. The camera is made in two sizes, $3\frac{1}{4} \times 4\frac{1}{4}$ and 4×5 .

The instrument is handsomely finished, being covered with black seal grain leather, with metal parts of nickel and black. A full complement of plate holders is furnished with each outfit together with full instructions.

	PRICES	
	$3\frac{1}{4} \times 4\frac{1}{4}$	4×5
Camera Complete	\$8.00	\$10.00
Aluminum Plate Holders10	.10
Aluminum Plate Holders, per doz.	.90	.90
Sole Leather Carrying Case	2.25	2.50

CYCLONE SERIES

BESIDES the Cyclone Magazine already described, we manufacture three other dainty, compact and thoroughly equipped Cyclones—the Cyclone Primer, the Cyclone Jr., and the Cyclone Sr. Considered as fixed focus instruments of the inexpensive type these cameras are incomparable.



They are strongly made, self-contained and the results to be obtained from their use are most gratifying. They will bear any amount of rough usage. The price of each outfit includes one double plate holder.

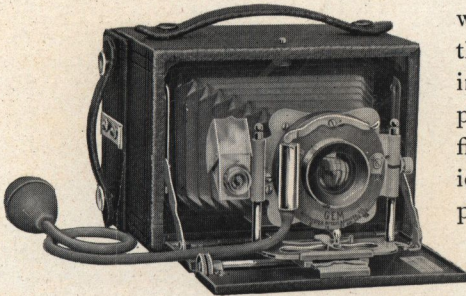
THE CYCLONE PRIMER, an eminently practical photographic instrument, possesses all the Cyclone advantages, and is extremely popular with the younger class of amateur photographers. The camera is an extremely light and convenient instrument. Just the thing for the beginner who wishes to perfect himself in the rudiments of photography. It takes a picture $2\frac{1}{2} \times 2\frac{1}{2}$. Price complete, \$2.50.

THE CYCLONE JR., built on the same lines as the Cyclone Primer, is widely used by amateurs and experts on excursions and outings, where a larger camera would perhaps be inconvenient. It will produce excellent portraits, landscapes, interiors or flashlights. The instrument weighs but fifteen ounces and accommodates three double plate holders, with a capacity of six dry plates. It takes a picture $3\frac{1}{2} \times 3\frac{1}{2}$. Price, complete, \$3.50.

THE CYCLONE SR. This last member of the series is distinguished for its ease of manipulation and its certainty of fine results. It is but a larger size of the cameras already described above. In common with them, the instrument possesses the view finder. It has an achromatic lens of wonderful depth and definition, and an automatic time and instantaneous shutter. This camera takes a picture 4×5 and may be used as a hand instrument or with a tripod. Price complete, \$4.00.

SNAPPA

FOR compactness, ease of reloading in daylight with an extra magazine, speed of operation, and general excellence, the Snappa Camera surpasses any magazine instrument ever called to the attention of the picture-taking public. It appeals to the advanced amateur, who desires to make



negatives for lantern slide work or enlargements; to the novice as well. The instrument carries twelve plates or twenty-four cut films, which are automatically presented for exposure. One motion does it all. Snappa is a folding camera. The magazine, which carries the

exposures, is a component part of the instrument. It is made in $3\frac{1}{4} \times 4\frac{1}{4}$ size only.

Snappa is made in two styles. They differ in but one particular. One has a ground glass attachment; the other has not.

SPECIFICATIONS: Dimensions, $5\frac{3}{8}$ " by 4 " by $3\frac{1}{2}$ ". Draw, 5 ". Box, mahogany and aluminum, covered with seal grain leather, with handle. Metal equipment, nickel, steel and brass. Bellows, red Russia leather, lined. Front, rising and falling and sliding. Rack and pinion focusing attachment. Finder, brilliant, hooded. Tripod sockets, two. Shutter, Gem. Lens, Rapid Rectilinear. Automatic registering dial.

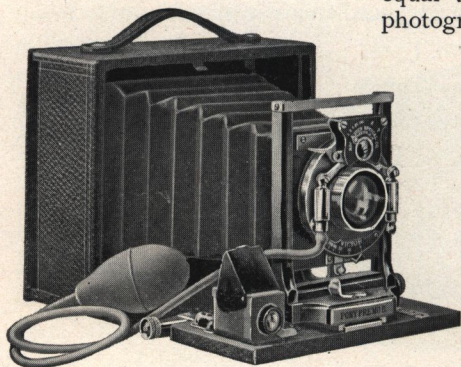
PRICES

	Plain	With Ground Glass
Camera complete, Gem Shutter and R. R. Lens	\$12.00	\$15.00
With Ross Homocentric lens, Series C, F: 6.3, No. 1	39.00	41.00
With Ross Homocentric lens, Series D, F: 8, No. 1	35.50	37.50
With B. & L. Plastigmat, F: 6.8, No. 1	44.00	46.00
With B. & L. Zeiss, Series VIIa, F: 7, No. 2	64.50	66.50
With Goerz Dbie. Anastigmat, Series III, F: 6.8, No. 0	47.50	49.50
With Voigtlander Collinear, Series III, F: 6.8, No. 2	42.50	44.50
With Verastigmat, F: 6.8, No. 0	44.00	46.00
Extra magazine	3.50	
Carriers (plate or film)10	
Carriers (plate or film), per dozen	1.00	

When any lens but the R. R. is used we recommend the Auto Shutter in place of the Gem, which is furnished at an additional cost of \$7.00.

PONY PREMO B

OWING to its simplicity, this instrument is especially popular with ladies. It is very compact in form dainty in appearance, and is readily adapted to the purposes of general photography. Its equipment is fully equal to the requirements of photography.



SPECIFICATIONS:

Dimensions, 6" by 3½" by 2½" in 4 x 5; 8½" by 6½" by 3" in 5 x 7. Draw, 6½" in 4 x 5; 8" in 5 x 7. Box, solid mahogany, highly polished and dovetailed, covered with best seal grain leather, and handle. Metal equipment, lacquered brass. Bellows, red Russia leather, lined with gossamer cloth. Front, rising and falling. Rack and pinion focusing attachment. Panel in rear

for focusing. Finder, hooded, brilliant view. Level, double spirit pattern. Removable lens board. Tripod socket. Shutter, Victor, with Iris diaphragm, bulb and hose attachment. Lens, Rapid Rectilinear. Carrying case. One plate holder.

	PRICES	4 x 5	5 x 7
Camera complete		\$16.00	\$21.00

PREMO A

THIS instrument typifies another and distinctive style of hand camera construction. It is substantially made and possesses the prominent features which characterize the Premo line in the matter of equipment, including a double swing back, rack and pinion focusing attachment, and detachable lens board. It is made in one size only, 4 x 5.

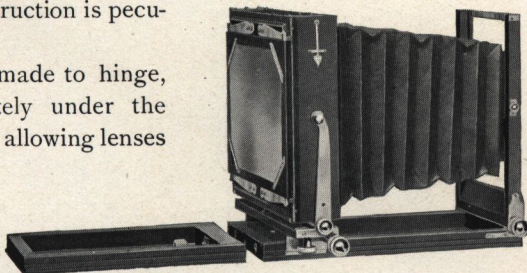
SPECIFICATIONS: Dimensions, 7" by 5" by 6". Draw, 10". Box, solid mahogany, covered with seal grain leather with handle. Metal equipment, brass and nickel. Bellows, red Russia leather, lined. Front, rising and sliding. Back, double swing, with panel for focusing. Rack and pinion focusing attachment. Finder, reversible brilliant view. Double spirit level. Removable lens board. Two tripod sockets. Shutter, Victor, with bulb and hose attachment. Lens, Rapid Rectilinear. One double plate holder.

	PRICES	4 x 5
Camera complete		\$15.00
Wide Angle Lens, extra		7.00

EMPIRE STATE

THE Empire State has come to be very generally used for purposes of enlarging and copying. It is, in fact, adapted to the widest range of photography. For scientific purposes, for manufacturing, or for newspaper work it is especially recommended. The Empire State is made of selected mahogany and the very best brass. Its construction is peculiar to itself.

The bed is made to hinge, folding completely under the instrument, thus allowing lenses of extremely short focus to be used. The front is operated by an



ingenious rack and pinion. The camera has a full brass bottom plate and is perfectly rigid in every position. Up to the 14 x 17 size the focus is adjusted by moving the front or back as preferred, both operating by rack and pinion. The 14 x 17 size is made with back focus only, and has a convenient focusing handle.

The Empire State has also a rack and pinion, rising and falling front, as well as a double swing, operating from the center. It has besides a reversible back. The instrument has proved invaluable for delicate and accurate work. Lenses of the widest angle can be used with facility.

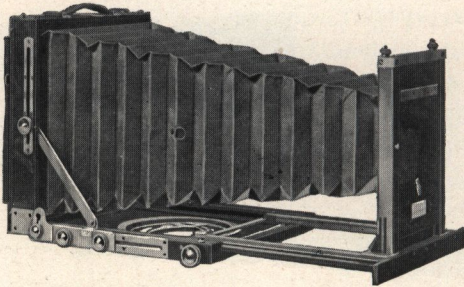
Price includes a substantial leather-bound canvas carrying case and one Perfection holder. With sizes above 11 x 14 English book holders are supplied. The carrying case contains the camera and three plate holders.

NOTE.— Upon special order, the Empire State is made in sizes larger than those stated herewith. Prices on application.

Size of View	Focal Capacity	Weight of Camera	Price
5 x 7	22 inches	5 lbs.	\$21.00
6½ x 8½	27 inches	5¾ lbs.	22.00
8 x 10	30 inches	7 lbs.	25.00
11 x 14	37 inches	11½ lbs.	36.00
14 x 17	48 inches	23¾ lbs.	60.00

CARLTON : UNIVERSAL

AMONG professionals and those amateurs who use a Camera for the purposes of view work and copying, the Carlton and the Universal have achieved lasting popularity on account of their many and exceptional characteristics. In design and construction they embody qualities of beauty, compactness and simplicity.



The box is made of first-grade mahogany and brass, and is superbly finished. The bed of the Carlton carries its own revolving tripod top or turn table, adapted for

use with the combination tripod. The Universal does not, and in this point their chief difference lies.

The length of draw of these instruments, together with their admirable construction, easily adapts them for use with all regular lenses now on the market, and especially wide angle lenses. They have reversible backs and swing backs of the most approved pattern as well as all other desirable adjustments.

The Carlton outfit includes, besides the camera, one mahogany Perfection plate holder with rubber slides, and one mahogany Combination tripod, all securely enclosed in a canvas case. The case accommodates the camera, the tripod, and six holders. In sizes up to and including $6\frac{1}{2} \times 8\frac{1}{2}$, there is a compartment for lenses in the case.

The Universal outfit includes a canvas carrying case, one Perfection plate holder and a Combination ash tripod. With sizes above 11×14 , the English book holder is furnished. The case accommodates the camera, six holders and the tripod.

Size of View	Focal Capacity	Price	
		Carlton	Universal
5 x 7	17 in.	\$40.00	\$34.00
$6\frac{1}{2} \times 8\frac{1}{2}$	$20\frac{1}{4}$ in.	46.00	38.00
8 x 10	24 in.	52.00	43.00
11 x 14	$30\frac{3}{4}$ in.	62.00	52.00

ACCESSORIES



ANNOUNCEMENT. Ross, Ltd., the oldest photographic opticians* in England, having been established in 1830, and manufacturers of leading photographic lenses of every character, have named this company as their exclusive representative in America.

THE HOMOCENTRIC LENS The latest product of Ross, Ltd., has been perfected after a series of experiments stretching through many years. It involves new principles in optics and is specially corrected for the errors that have been known to exist in anastigmats. As its name implies, the Homocentric lens signifies the lens of ideal definition, the lens through which all the rays of light from any point of an object are converged again in one point in the image.

The new Homocentric lens possesses this definition to a degree unattained, and hence the name given to the lens.

The Homocentric is symmetrical; of four single meniscus lenses, with sufficient space for between-lens shutters. It is made in series of different relative apertures to suit various purposes, as follows:

Series B, aperture F: 5-6, for hand camera work, extremely rapid exposures, in the studio or out of doors.

Series C, aperture F: 6-3, specially recommended for hand cameras. Though not so rapid as Series B, a large angle of view is embraced when required.

Series D, aperture F: 8, for ordinary hand camera work, landscapes, groups, interiors, and copying. With a medium size stop, lenses of this series may be used for wide angles and uniform covering obtained.

The single combinations of any of the various series of Homocentrics may be employed as long focus landscape lenses.



	No.	Equivalent Focus	Plate Covered at Full Aperture	Price
SERIES B, } F: 5-6 }	1	5 in.	3½ x 4½	\$ 36 50
	3	6 in.	4 x 5	44.00
	5	8½ in.	5 x 7	62.00
	6	10 in.	6½ x 8½	87.00
	7	12 in.	8 x 10	124.00
SERIES C, } F: 6-3 }	1	5 in.	3½ x 4½	29.00
	3	6 in.	4 x 5	32.00
	5	8½ in.	5 x 7	51.00
	6	10 in.	6½ x 8½	69.00
	7	12 in.	8 x 10	91.00
SERIES D, } F: 8 }	1	5 in.	3½ x 4½	25.50
	3	6 in.	4 x 5	29.00
	5	8½ in.	5 x 7	44.00
	6	10 in.	6½ x 8½	58.00
	7	12 in.	8 x 10	76 50

ACCESSORIES

B. & L. PLASTIGMAT LENS F: 6-8 This lens is a recent creation of leading makers and is especially recommended for hand camera work. The Plastigmat excels in speed. It has excellent covering power and good anastigmatic correction, besides being a lens of great brilliancy. The two combinations of this lens are similar, being composed of four single lenses each. The foci chosen for the various sizes of the series are longer than has been customary heretofore, and as a result in every case the plate is perfectly covered with the full opening of the lens, working at F:6-8.



No.	Size of Plate	Equivalent Focus	Diameter	Price
1	3 $\frac{1}{4}$ x 4 $\frac{1}{2}$	5 $\frac{1}{4}$ inches	1 $\frac{3}{8}$ inch	\$34.00
2	4 x 5	6 $\frac{1}{2}$ inches	1 $\frac{1}{2}$ inch	40.00
3	5 x 7	7 $\frac{1}{2}$ inches	1 inch	48.00
4	5 x 8	9 $\frac{1}{4}$ inches	1 inch	55.00
5	6 $\frac{1}{2}$ x 8 $\frac{1}{2}$	11 inches	1 inch	75.00
6	8 x 10	13 inches	1 inch	90.00

B. & L. - ZEISS CONVERTIBLE ANASTIGMAT LENS — Series VIIa

For use in hand cameras this lens is especially recommended, excelling not only in optical qualities but in its adaptability with the limited space allowed in these instruments for a lens.



Convertible Anastigmats are doublet lenses. They are made up of eight elementary lenses arranged in pairs, two pairs in each system. The covering and defining power of this lens is faultless. This lens is convertible into three lenses of different foci and angle where the two single anastigmats are of different foci, or into two lenses of different foci and angle where the two single anastigmats are of the same foci.

No.	Size of Plate Covered with Full Aperture	Focus of Front Lens	Focus of Back Lens	Combined Focus	Speed	Price
3	4 x 5 in.	11 $\frac{1}{2}$ in.	7 $\frac{1}{4}$ in.	5 in.	F: 7-7	\$ 59.50
5	4 $\frac{1}{2}$ x 6 $\frac{1}{2}$ in.	11 $\frac{1}{2}$ in.	9 in.	5 $\frac{3}{4}$ in.	F: 7	63.00
8	5 x 7 $\frac{1}{2}$ in.	14 in.	11 $\frac{1}{2}$ in.	7 in.	F: 7	75.00
9	5 x 8 $\frac{1}{2}$ in.	16 $\frac{1}{2}$ in.	11 $\frac{1}{2}$ in.	7 $\frac{1}{2}$ in.	F: 7-7	87.50
11	6 $\frac{1}{2}$ x 8 $\frac{1}{2}$ in.	16 $\frac{1}{2}$ in.	14 in.	8 $\frac{1}{2}$ in.	F: 7	94.50
12	6 $\frac{1}{2}$ x 8 $\frac{1}{2}$ in.	19 $\frac{1}{4}$ in.	14 in.	9 $\frac{1}{4}$ in.	F: 7-7	115 50
17	8 x 10 in.	23 $\frac{1}{2}$ in.	19 $\frac{1}{4}$ in.	12 in.	F: 7	167 50

ACCESSORIES

B. & L. -ZEISS ANASTIGMAT LENS—Series V,

1:18 The lenses of this series are designed for extreme wide angle work. They have a very great speed and covering power and an effective angle which equals or exceeds any other wide angle lens. The field of this lens embraces 110 degrees.

No.	Size of Plate covered with Stop F:36	Diag. of Largest Plate cov. with Sym. Stop 104° 110°	Free Diameter of Largest Lens.	Equivalent Focus	Price
1	4½ x 6½ in.	8½ in.	¾ inches	3⅜ in.	\$22.50
2	5 x 7 in.	11 in.	1 inches	4 in.	22.50
3	6½ x 8½ in.	14⅜ in.	1⅜ inches	5⅞ in.	28.00
4	8 x 10 in.	15½ in.	1⅞ inches	7⅞ in.	35.00

We also list the Rochester Symmetrical Wide Angle Lens, which has an angle of from 80 to 90 degrees.

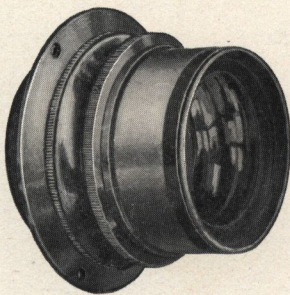
No.	Size	Focus	Price
1	4 x 5	3½ inches	\$10.00
2	5 x 7	5 inches	12.00
3	6½ x 8½	6½ inches	15.00
4	8 x 10	8 inches	18.00

COLLINEAR DOUBLE ANASTIGMAT LENS—

Series II The Collinear Lens is a new form of lens, made of Jena glass, and consists of two symmetrical anastigmat combinations, each of which is made up of three lenses.

The sharpness of the image yielded by the Collinear lens is remarkable. The finest definition is easily obtained over the entire plate, even when the lens is used with full aperture. The covering power, in relation to its focus, is surprisingly large.

In this lens the back combination may be used separately, and possesses double the focal length of the lens when used as a compound. Sizes 5 x 7 and under work at an aperture of F: 5.6; sizes 6½ x 8½ to 8 x 10 inclusive, at F: 6.3.

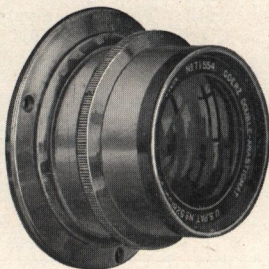


No.	Equivalent Focus	Size of Plate Sharply Covered			Price with Iris Diaphragm
		F: 5.6	F: 8	F: 32	
1	3½ in.	3½ x 3½ in.	3 x 4 in.	3½ x 4½ in.	\$ 35.00
2	4 in.	3½ x 4½ in.	4½ x 6½ in.	5 x 7 in.	40.00
3	5 in.	4 x 6½ in.	5 x 7 in.	6½ x 8½ in.	45.00
4	7 in.	5 x 7 in.	6½ x 8½ in.	8 x 10 in.	60.00
5	9 in.	6 x 8 in.	6½ x 8½ in.	9 x 11 in.	77.50
6	11⅞ in.	6½ x 8½ in.	8 x 10 in.	10 x 12 in.	105.00
7	14½ in.	8 x 10 in.	10 x 12 in.	12 x 15 in.	140.00

ACCESSORIES

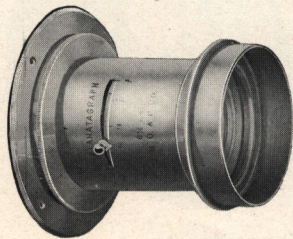
GOERZ DOUBLE ANASTIGMAT LENS F:6-8—

Series III Goerz lenses are universal in character. At full aperture they admit of instantaneous photographs embracing an angle of seventy degrees, even on dull days. As the image is perfectly sharp, even with small apertures, the definition, brilliancy, and depth of every point of the field are absolutely uniform, hence perfectly sharp wide-angle, instantaneous photographs may be taken. The back lens, the focus of which is about double that of the entire objective, may, by itself, be used as a landscape lens.



No.	Equiv. Focus	Free Aperture	Size of Plate Sharply Covered at			Price with Iris Diaphragm
			F: 6-8	F: 15-5	F: 6 2	
0	4 $\frac{3}{4}$ in.	5 $\frac{5}{8}$ in.	3 $\frac{1}{2}$ x 4 $\frac{1}{2}$ in.	4 x 5 in.	4 $\frac{3}{4}$ x 6 $\frac{1}{2}$ in.	\$ 37.50
1	6 in.	1 in.	4 x 5 in.	4 $\frac{3}{4}$ x 6 $\frac{1}{2}$ in.	5 x 8 in.	45.00
2	7 in.	1 in.	4 $\frac{3}{4}$ x 6 $\frac{1}{2}$ in.	5 x 8 in.	7 x 9 in.	51.50
3	8 $\frac{1}{4}$ in.	1 $\frac{1}{4}$ in.	5 x 8 in.	6 $\frac{1}{2}$ x 8 $\frac{1}{2}$ in.	8 x 10 in.	62.50
4	9 $\frac{1}{2}$ in.	1 $\frac{3}{8}$ in.	6 $\frac{1}{2}$ x 8 $\frac{1}{2}$ in.	7 x 9 in.	10 x 12 in.	75.50
6	12 in.	1 $\frac{5}{8}$ in.	8 x 10 in.	10 x 12 in.	16 x 18 in.	107.00

PLANATOGRAPH LENS This lens was designed and perfected by us and forms a part of the regular equipment for many of our cameras. It is especially suitable for portraits, groups, architecture, landscapes and instantaneous work.



The Planatograph is a lens of the double symmetrical type. The back combination used alone increases the image on the ground glass to twice the size obtained when the combinations are used together. The Planatograph is fully corrected, gives equal illumination of the field and covers the plate admirably. We also make the Rochester Symmetrical Lens, resembling generally the Planatograph, but listed

\$2.00 lower in each size.

Size	Diameter of Lens	Equivalent Focus	Back Focus	Price
3 $\frac{1}{4}$ x 4 $\frac{1}{4}$	1 inch	6 inch	5 $\frac{1}{2}$ inch	\$12.00
4 x 5	1 inch	6 $\frac{1}{4}$ inch	5 $\frac{3}{8}$ inch	12.00
5 x 7	1 $\frac{1}{4}$ inch	8 inch	7 inch	14.00
6 $\frac{1}{2}$ x 8 $\frac{1}{2}$	1 $\frac{3}{8}$ inch	11 inch	9 $\frac{1}{8}$ inch	17.00
8 x 10	1 $\frac{5}{8}$ inch	13 inch	11 $\frac{1}{8}$ inch	20.00

ACCESSORIES

TURNER-REICH ANASTIGMAT LENS F: 7-5

This anastigmat has an excellent record. The complete correction of astigmatism, flatness of field, remarkable defining power, great depth of focus, brilliancy and uniformity of illumination, the proper relation of focal length to size of plate, — these are the manufacturer's claims for the Turner-Reich. Experience has shown them to be well sustained. This lens is rated easily among the leading lens products of the world.

TURNER-REICH II.

No.	Size Plate	Equivalent Focus	Focus Back Lens	Focus Front Lens	Price Mounted in Barrel
1	4 x 5	6 in.	11 in.	14 in.	\$40.00
2	5 x 7	7½ in.	12 in.	18 in.	48.00
3	5 x 8	8½ in.	16 in.	18 in.	55.00
4	6½ x 8½	10½ in.	18 in.	24 in.	75.00
5	8 x 10	12 in.	21 in.	28 in.	90.00

VERASTIGMAT LENS F: 6-8 This objective of the convertible type has a speed of F: 6-8. Though but recently introduced, it has met with remarkable favor, since all that the manufacturers claim for it is confirmed by the severest tests. Needless to say, the Verastigmat is made of the famous Jena glass, wrought by the most improved scientific methods. The Verastigmat is worthy of most careful consideration on the part of advanced amateurs who seek particular results.

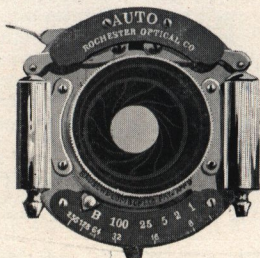
No.	Equiv. Focus	Focus Back Lens	Focus Front Lens	Plate Covered at F: 6-8	Plate Covered at F: 16	Price
0	4½ in.	8 in.	10 in.	3½ x 4¼	4½ x 6½	\$34.00
1	6 in.	11 in.	14 in.	4 x 5	5 x 7	40.00
2	7½ in.	12 in.	18 in.	5 x 7	8 x 10	48.00
3	8¾ in.	16 in.	18 in.	5 x 8	9 x 11	55.00
4	10½ in.	18 in.	24 in.	6½ x 8½	10 x 12	75.00
5	12½ in.	21 in.	28 in.	8 x 10	11 x 14	90.00

RAPID RECTILINEAR LENS As its name implies this lens is designed for fast work, in the field and in-doors as well. The Rapid Rectilinear lens is constructed of carefully selected glass and made from a formula under our own special direction. It is of double combinations, accurately corrected, and yields the most satisfactory results.

Size	Equivalent Focus	Prices in Cells
3¼ x 4¼	5¼ inches	\$5.00
4 x 5	6½ inches	6.00
5 x 7	8½ inches	8.00

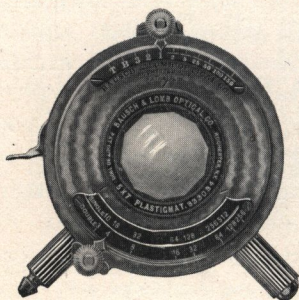
ACCESSORIES

THE AUTO SHUTTER The Auto Shutter, distinctively our own product, not only combines the automatic features, but the retarding device as well. As the name implies, it is automatic in photographic exposure; that is, self-acting, no setting device being required. Instantaneous exposures of from 1-100th of a second to one second or the intervening fractions thereof, may be made, or time and bulb exposures of any desired duration. The Auto Shutter is equipped with Iris Diaphragms, which are regulated by a small lever at the bottom of the shutter, the diaphragm opening being designated by plainly marked figures. The Auto Shutter is small, compact, self-enclosed and exceedingly simple in manipulation.



Size	Size of Largest Diaphragm	Fitted to Ross, Planatograph, Symmetrical, R. R., Plastigmat, Zeiss	Fitted to Lenses of Other Manufacture
4 x 5	$\frac{3}{4}$ in.	\$10.00	\$11.00
5 x 7	1 in.	11.00	12.00
$6\frac{1}{2}$ x $8\frac{1}{2}$	$1\frac{5}{16}$ in.	12.00	14.00
8 x 10	$1\frac{13}{32}$ in.	14.00	16.00

THE VOLUTE SHUTTER The Volute Shutter, a creation of the past year, possesses features worthy of the attention of operators desiring to make rapid exposures. It is especially adapted to such subjects as pole vaulting, runners, race horses, automobile races, and the like. In the Volute Shutter a speed of 1-150th of a second has been attained. The shutter is opened and closed with one lever. Whatever the duration of the exposure is to be, the Volute Shutter opens instantly, and closes instantly, after remaining open the desired length of time, thus giving the maximum exposure. At the same time all the advantages of the older construction have been retained, and in addition the entire mechanism rendered dust proof, all the parts being enclosed in the highly polished case.



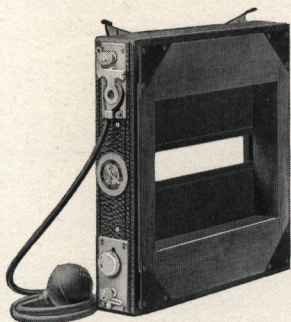
Size	Size of Largest Diaphragm	Fitted to Ross, Planatograph, Plastigmat or Zeiss	Fitted to Lenses of Other Manufacture
4 x 5	1 in.	\$17 00	\$18.00
5 x 7	1 in.	17.00	18.00
$6\frac{1}{2}$ x $8\frac{1}{2}$	$1\frac{1}{2}$ in.	18.50	20.00

ACCESSORIES

THORNTON-PICKARD NEW PATENT FOCAL PLANE SHUTTER

For high speed the superior advantages of the new Focal-Plane Shutter have come to be thoroughly appreciated.

It is capable of giving results that cannot be obtained by any other form of shutter.



The short exposures obtainable with the Focal Plane Shutter are due to the fact that only a part of the plate is exposed at once. The shutter consists of a roller blind working in front of and close to the plate. The blind has a narrow slit in it, which travels rapidly across the plate. The speed is regulated by means of a small knob that winds up the driving spring, and also by altering the width of the adjustable slit. The speed indicator is always fitted to this shutter unless otherwise ordered.

Prices: 4 x 5, \$22.00; 5 x 7, \$27.00; 6½ x 8½, \$32.00; 8 x 10, \$37.50.

THE VICTOR SHUTTER The new model Victor Shutter strongly appeals to the advanced amateur by reason of its simplicity and wide scope. It is noiseless and free from vibration. It permits of exposures of any length of time. Has Iris Diaphragms and bulb and hose attachment and wide range of exposure.

When fitted to Ross, Planatograph, Symmetrical, R. R., Plastigmat, or Zeiss Lens

Size	Size of Largest Diaphragm	Price
4 x 5	$\frac{3}{4}$ in.	\$ 7.00
5 x 7	1 in.	8.00
6½ x 8½	1 $\frac{5}{8}$ in.	9.00
8 x 10	1 $\frac{3}{4}$ in.	11.00

When fitted to Lenses of Other Manufacture, Leaving Barrel Intact

Size	Size of Largest Diaphragm	Price
4 x 5	$\frac{3}{4}$ in.	\$ 8.00
5 x 7	1 in.	9.00
6½ x 8½	1 $\frac{5}{8}$ in.	10.00
8 x 10	1 $\frac{3}{4}$ in.	12.00

THE GEM SHUTTER This shutter is self-setting and automatic in action. The release lever or bulb attachment controls the exposure. The Gem is fitted with Iris Diaphragms. It has an indicator to regulate time, instantaneous and bulb exposures. Price: \$4.00.

THE DROP SHUTTER This shutter is made of mahogany and has a cherry slide, which works by the aid of a rubber band. The drop shutter is made in three sizes, with openings 1¼, 2½ and 3¼ inches. Price: \$1.00.

WELLER WING SHUTTER This shutter may be used on any camera for time or instantaneous work. It works with a minimum jar, being practically noiseless. It has an extreme aperture in the small size of 1¼ inches and in the large size of 2¾ inches. Price: \$3.50.

ACCESSORIES

PREMO PLATE HOLDER

Amateurs and professionals the world over using Premo Cameras insist on having the Premo Plate Holder. Premo Holders are made for Premo Cameras. No other holders fit Premo Cameras as well. Their simplicity rests in their design; their excellence in their manufacture. The patented spring bar device for reloading the holder, together with the absolutely light tight character of the shutter, are notable points of advantage.



The Premo Holder is made in two styles to carry plates or cut films. The slides of the Premo Holder are made entirely of rubber. The flange in the ordinary holder is of wood, in the Premo it is a component

part of the holder. This does away with the danger of breaking, and further tends to increase the light tight character of the holder. All Premo Holders bear the name "Premo" embossed on the septum. No Holder is a Premo Holder unless it is so marked. Ordinary rubber or press board slides are furnished on request. Prices: $3\frac{1}{4} \times 4\frac{1}{4}$, \$1.00; 4×5 , \$1.00; 5×7 , \$1.25; $6\frac{1}{2} \times 8\frac{1}{2}$, \$1.75; 8×10 , \$2.00.

ROCHESTER PLATE HOLDER A serviceable cherry holder with press board slides, fits either Premo or Cyclone Cameras. Prices: $2\frac{1}{4} \times 2\frac{1}{4}$, 35 cts.; $3\frac{1}{2} \times 3\frac{1}{2}$, 75 cts.; $3\frac{1}{4} \times 4\frac{1}{4}$, 80 cts.; 4×5 , 80 cts.; 5×7 , \$1.00; $6\frac{1}{2} \times 8\frac{1}{2}$, \$1.50; 8×10 , \$1.75.

POCKET PREMO HOLDER A single holder for use in the Pocket Premo Camera. Resembles the book holder in construction, and is made of wood and aluminum. Price: $3\frac{1}{4} \times 4\frac{1}{4}$, 60 cts.

UNIVERSAL PLATE HOLDER Universal Plate Holders are made for View Cameras, and in construction resemble closely the Premo. They are the best holders for View Cameras. Prices: 5×7 , \$1.25; $6\frac{1}{2} \times 8\frac{1}{2}$, \$1.75; 8×10 , \$2.00; 11×14 , \$4.00.

WARNICA SELF-ADJUSTABLE PLATE HOLDER Fits all styles of Premo cameras, and at the same time successfully holds dry plates of smaller size than the holder without the necessity of a kit. It automatically centers any size plate in the holder used. Prices: 4×5 , \$1.25; 5×7 , \$1.50; $6\frac{1}{2} \times 8\frac{1}{2}$, \$1.85; 8×10 , \$2.25.

ENGLISH BOOK HOLDER This form of book holder is in general use abroad and is becoming popular in this country. The sides are hinged, opening like a book when placing or displacing plates. 11×14 , . . . With hard rubber slides, \$6.00 With press-board slides, \$5.00 14×17 , . . . With hard rubber slides, 7.50 With press-board slides, 6.50

HOLDER SLIDES Holder Slides are now made entirely of hard rubber, or of hard rubber with wooden shoulders, or press-board with wooden shoulders. They fit any style of regular dry plate holders. In ordering slides specify fully the holder for which they are intended.

	$3\frac{1}{4} \times 4\frac{1}{4}$	4×5	5×7	$6\frac{1}{2} \times 8\frac{1}{2}$	8×10	11×14
Hard rubber, wooden shoulder	\$.20	\$.25	\$.35	\$.50	\$.65	\$ 1.00
Press-board, wooden shoulder	.20	.25	.35	.50	.65	1.00
Hard rubber throughout	.30	.35	.50	.75		

ACCESSORIES

CARTRIDGE ROLL HOLDER Cartridge roll holders are furnished with any of our 4 x 5 or 5 x 7 cameras. They are interchangeable with plate holders. These roll holders load in daylight, are substantially made and covered with seal grain leather with nickel fittings. Prices: 4 x 5, \$5 00; 5 x 7, \$6.50.

HOLDER KITS We make Kits in two widely different styles, the ordinary wooden Kit with the opening for holding small plates in large plate holders; also the regular metal Kit, which automatically centers the plate and securely holds it in the regular plate holder. The wooden Kits are extremely simple and easy of manipulation. The metal Kits are equally simple, but more substantial. The full surface of the plate is available at all times when the metal Kit is used.

Size Outside	Size of Opening for Plates	Price Each in Metal or Wood
* 4 x 5	3 $\frac{1}{4}$ x 4 $\frac{1}{4}$	\$.20
* 5 x 7	3 $\frac{1}{4}$ x 4 $\frac{1}{4}$ or 4 x 5	.25
† 5 x 8	3 $\frac{1}{4}$ x 4 $\frac{1}{4}$ or 4 x 5 or 4 $\frac{1}{4}$ x 6 $\frac{1}{2}$.25
* 6 $\frac{1}{2}$ x 8 $\frac{1}{2}$	3 $\frac{1}{4}$ x 4 $\frac{1}{4}$ or 4 x 5 or 5 x 7	.30
* 8 x 10	4 x 5 or 5 x 7 or 6 $\frac{1}{2}$ x 8 $\frac{1}{2}$.40
† 11 x 14	8 x 10 or 10 x 12	.50
† 14 x 17	10 x 12 or 11 x 14	.80

Larger sizes on application.

* Metal or wood. † Wood only.

PREMO FILM KIT This clever device readily adapts any plate holder to the use of cut films. It is a substantial metal film carrier that slips readily into the plate holder just as the plate would. Prices: 3 $\frac{1}{4}$ x 4 $\frac{1}{4}$, 15 cts; 4 x 5, 15 cts.; 5 x 7, 20 cts.

PREMO CARRYING CASES Carrying cases for Premo Cameras are substantially made of the best black sole leather with heavy finished catches and trimmings. The style for the Pony Premo series carries the camera in one side and extra plate holders in the other. Cases for the Star Premo, Pony Premo Nos. 6 and 7 and Premo Supreme are lined with velvet and are highly ornamented.

Cameras	3 $\frac{1}{4}$ x 4 $\frac{1}{4}$	4 x 5	5 x 7	6 $\frac{1}{2}$ x 8 $\frac{1}{2}$	8 x 10
Pony Premo No. 2	\$ 1.50	\$ 1.50			
Pony Premo Nos. 3, 4, 5		4.00	\$ 5.00	\$ 6.50	
Pony Premo No. 6		5.00	6.00	8.00	
Pony Premo No. 7		6.00	8.00	12.00	
Star Premo	4.00	5.00			
Premo Supreme		15.00	20.00	25.00	
Long Focus Premo			6.00	8.00	\$10.00
Pocket Premo	2.25				
Snappa Camera alone	2.50				
Snappa, and extra magazine	3.50				
Premo Film Cameras, either style	1.75				

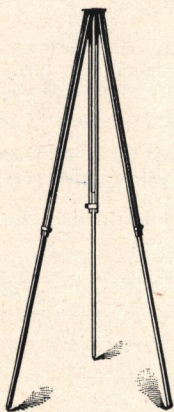
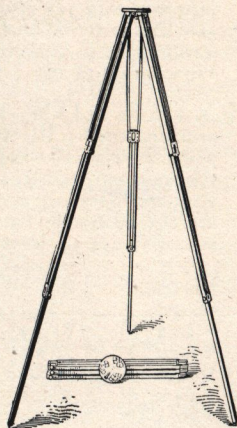
Camera	5 x 7	6 $\frac{1}{2}$ x 8 $\frac{1}{2}$	8 x 10	11 x 14	14 x 17
Carlton and Universal	\$3.00	\$3.50	\$4.00	\$5.00	\$6.50
Empire State	2.00	2.25	2.50	3.25	5.00

ACCESSORIES

COMBINATION TRIPOD In construction this tripod is made on the sliding and folding principle, being composed of three sections; the lowest section slides into



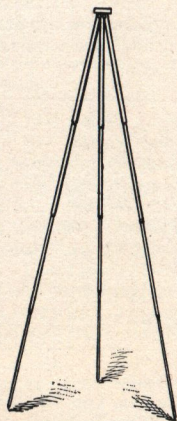
the second, while the first section folds back upon it. The wood is selected spruce or ash with brass trimmings. Its extended length is fifty-six inches, length closed twenty-two inches. Prices: No. 2 $\frac{1}{2}$, Spruce, \$3.00; No. 2 $\frac{1}{3}$, Ash, \$3.00; No. 3, Ash, \$3.50; No. 4, Ash, \$4.50; No. 5, Ash, \$6.00. We also make a Special Tripod in spruce with mahogany finish, or in ash, after this pattern. Price, Spruce, \$1.75; Ash, \$1.85.



RAY SLIDING TRIPOD An extremely light but at the same time very strong instrument is the Ray tripod. It is made in two sizes and is designed for cameras up to and including the 4 x 5 size. The Ray is composed of two sections. The lower section slides within the upper. It can be clamped at any desired length by manipulating the milled thumb screw. Prices: No. 1, 80c.; No. 2, \$1.00.

TWIST LOCK TRIPOD

This tripod is constructed of nicked steel tubing of very light gauge. No weight capable of being placed on the tripod when set up will cause it to give. The legs are made in four joints of diminishing size which telescope within one another. In manipulating the Twist Lock simply draw out each telescope and twist the whole to the right, the leg is then locked. When closed the tripod measures fourteen inches, and enclosed in a leather carrying case it weighs two pounds. Prices: Complete with leather carrying case, \$7.50; complete without leather carrying case, \$6.00.

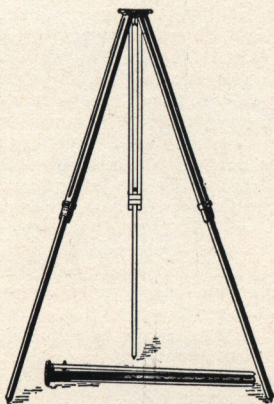
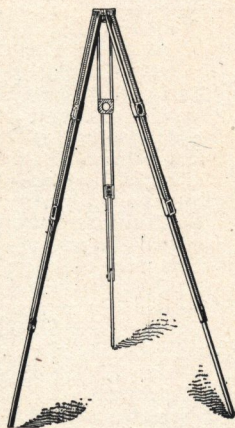


ACCESSORIES

PREMO TRIPOD Very light and compact as well as rigid. Perfect in design and especially adapted for use with hand cameras. This tripod is made in three joints, the lowest section sliding into the second, and these



two into the third. The upper section folds back upon the third. When closed this tripod measures but sixteen inches in length. No. 1 weighs fifteen ounces with aluminum top. Its length when extended is fifty-five inches. No. 2 weighs one pound and seven ounces. Prices: No. 1, for 4 x 5 camera, \$4.00; No. 2, for 5 x 7 camera, \$5.00; No. 4, for cameras larger than 5 x 7 size, \$7.00. Finish, No. 4, Flemish oak with stays.



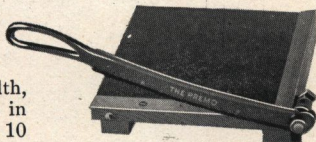
CARLTON SLIDING TRIPOD

One of the simplest and most approved tripods in use to-day. The legs are made in three pieces, rendering very firm support. The tripod top is of wood covered with cloth. It is very rigid. Prices: No. 1, Spruce, for cameras up to 5 x 7, weight 1 lb. 15 oz., \$2.00; No. 2, Spruce, for 5 x 8 and 6½ x 8½, weight 2 lbs. 12 ozs., \$2.50; No. 3, Ash, for 8 x 10 and 10 x 12, weight 4 lbs. 15 ozs., \$3.00; No. 4, Ash, for 11 x 14 and 14 x 17, weight 7 lbs. 3 ozs., \$4.00; No. 5, Ash, for 17 x 20 to 20 x 24, weight 11 lbs., \$5.00.

PREMO TRIMMING BOARD

This board merits the consideration of all desiring a high grade print trimmer. The movable blade is curved, giving a drawing cut, so important for smooth work.

The efficiency of the machine is increased by the combination of the curved movable blade and the peculiar construction of its pivotal spring joint, which allows the blade a slight lateral motion, and thus secures perfect contact of the two blades at every point. Prices: No. 1 will cut up to 6 inches in width, \$1.50; No. 2 will cut up to 8 inches in width, \$2.25; No. 3 will cut up to 10 inches in width, \$3.00.

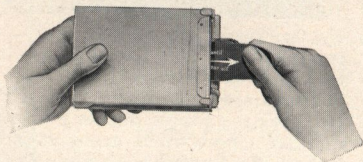


ACCESSORIES

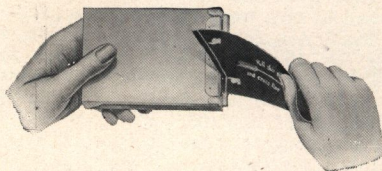
THE PREMO FILM PACK—DAYLIGHT LOADING

THE FILM USED IN THIS PACK IS MADE ESPECIALLY FOR THE PURPOSE BY THE EASTMAN KODAK COMPANY, ROCHESTER, N. Y.

This compact, light proof device for carrying film exposures is beyond question the most notable creation, photographically, of the past year. By its use it is possible to convert plate cameras into daylight loading film cameras, without the addition of any clumsy or cumbersome attachment; a special holder or adapter only is needed. Again, the Premo Film Pack may be used with the Premo film cameras, offering the most compact, lightest and most easily operated photographic apparatus on the market. The simplicity of the device, as well as its ease of operation, appeals to everyone upon inspection; a light tight sheath, made of black press board, with an opening in one side corresponding in size to the exposure, into which are folded thirteen strips of black, chemically pure paper, with the tabs protruding; each of twelve of these pieces of black paper has fastened to the inner side a sheet of film; the tabs which protrude from the sheath are numbered from one to twelve; the thirteenth strip of black paper is marked "Safety Cover," and does not carry any film, but is folded outside of "Safety Cover," and thus protecting it; such is the Film Pack.



In operation, the Film Pack, in its adapter, is placed in the plate camera, just as a plate holder. The marked black paper flaps protrude slightly. The operation of picture taking is confined to pulling out one by one the black paper flaps and tearing them off. Whether used in the Premo film camera, or in a plate camera, the operation is the same. Successive films are presented for exposure by pulling out one by one the numbered black paper flaps. When the exposures in the Film Pack have been exhausted, the pack is then rendered light tight, and may be taken from the camera in daylight to be replaced by a fresh one.



The extreme simplicity of the construction of the Film Pack is apparent by reference to the accompanying illustrations. Each black paper flap bearing an exposure is complete in itself and independent of the other film exposures. The mechanism of the interior of the Film Pack is in itself simple and effective.

Whether the Film Pack is used with a plate camera or with the Premo Film Camera, the operation of loading and presenting successive films for exposure is the simplest, quickest and most convenient ever devised.

The Premo Film Pack is not only the simplest, lightest, and most compact device for carrying films, but it is loaded with the very best sensitized product obtainable.

ACCESSORIES

There is one point of evident superiority in the Film Pack which cannot be too strongly emphasized. In using the Pack in a plate camera it is possible to focus on the ground glass between each exposure, and to enjoy the superior advantages of the ideal photographic outfit.

There can be no question as to the superiority of plate cameras. The world over they are the tools of the professional photographer. If they were not superior he would not use them. When it is possible to have the convenient advantages of a daylight loading film system coupled with the plate camera, without adding to the bulk or weight of the instrument, the ideal condition is realized. Thus the amateur is able to enjoy the superior privileges of his plate camera for serious work and at home, and at the same time to use his instrument with its high grade equipment of lens and shutter to record the passing views of a vacation trip or an extended journey. The Film Pack in its proper adapter means daylight photography with no extras, no attachments, no dark room. It is always ready for instant use.

Price in $3\frac{1}{2} \times 4\frac{1}{2}$ (1 dozen exposures): 70 cents.

Other sizes to be announced later.

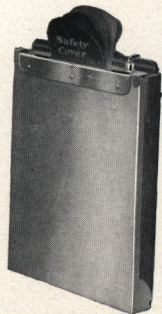
FILM PACK ADAPTER This device, which closely resembles the ordinary plate holder in appearance, is used exclusively to adapt the Premo Film Pack to plate cameras. It is made with a metal back and opens like an English book holder. Two metal fasteners hold the back and front together. The front has a slide and corresponds very closely in appearance and operation to the plate holder ordinarily used in the camera. In use the film pack and adapter are very easily manipulated. The pack is placed in the adapter, the back of which opens, and the adapter is then inserted in the camera exactly as a plate holder.

When exposures are to be made the slide is removed. The label on the face of the film pack is broken. The black tab marked safety cover is pulled out and torn off. The first film in the pack is then presented for exposure. Successive exposures may be made by repeating the operation and pulling out the black paper tabs one by one and tearing them off, and then manipulating the lens and shutter.

At any time the slide may be returned to the adapter and the adapter removed from the camera. The camera may then be most accurately focused by the use of the ground glass, and if it is desired dry plate exposures may be made, or the film pack may be returned to the camera and the film exposures continued. When all the twelve tabs have been pulled out and torn off, the film pack is exhausted. It is now rendered light tight and may be taken from the adapter in daylight and replaced by fresh one. The Film Pack Adapter is light, substantially built, and simple in operation.

Price: $3\frac{1}{2} \times 4\frac{1}{2}$, \$1.00.

Other sizes in process of construction.



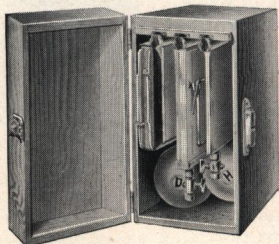
ACCESSORIES



PREMO DAYLIGHT DEVELOPER

Dry plates that have been exposed may be developed and fixed in daylight with the utmost convenience and the most perfect results by the use of the Premo Daylight Developer. Not only does it obviate the necessity of a dark room at home for developing, but it makes it possible for the operator to develop at once negatives made while on vacation trips or extended journeys. By the peculiar construction of the developing chamber it is possible to observe the development of the negative at all times while it is in the chamber, and thus to give to it just the proper treatment and just the right time.

As will be seen from the accompanying illustration, Premo Daylight Developer is simple in design and construction. The outfit consists of



a transfer box, which is made to accommodate plate holders of either the Premo or Poco variety. In operation the plate holder is slipped into this transfer box. The slide is withdrawn and the plate is made to drop from the holder. The developing chamber is constructed so as to engage this transfer box, and the plate is permitted to pass down from the transfer box into the developing chamber. The developer is forced into this chamber and withdrawn at will by means of a bulb and hose attachment. The developing

chamber has a ruby glass on each side, which is curtained and which permits the process of development to be observed.

The hypo chamber is so constructed as to engage the developing chamber, and the plate in turn is dropped into the hypo chamber, and treated in a manner similar to that already described. Every operation is performed without danger to the plate or fear of defacement, and no process of development, no matter how delicate, can excel that of which the Premo Daylight Developer is capable.

The outfit is enclosed in a handsome hard wood box. Each chamber is substantially made and finished in nickel. The whole is compact, complete, and light. The machine may be used with perfect comfort and safety in any apartment. It is made in the 4 x 5 size only. Price: \$6.50. Other sizes are in the process of construction.

ACCESSORIES

R. O. C. THE ROCHESTER DRY PLATE The introduction of R. O. C. The Rochester Dry Plate is one of the most significant facts photographically of the year just past. The new plate met with instant recognition and has achieved a marked success. Indeed, it has been with difficulty we have been able to supply the trade promptly with this product, so urgent have been the demands for the same.



R. O. C. The Rochester Dry Plate is a plate of general utility—a plate that may be used by the amateur and professional alike successfully under all conditions. It is a plate that renders as far as necessary the value of colors. It eliminates as nearly as possible the flare of halation; finally, it gives the finest details of gradation, the fullest depth, the most delicate definition, and is fast enough for high speed work.

The tendency has always been towards using a special plate for special purposes. We have succeeded in creating an emulsion whose chemical properties together with our method of coating are responsible for the general utility qualities already described. So it has come to be recognized that this new plate of ours is one of the most important advances recently made in the manufacture of photographic accessories.

R. O. C. The Rochester Dry Plate appeals to the photographer, either professional or amateur, very strongly. There is represented in it a unity of good qualities, and its adaptability and value for the every purpose of photography are easily understood. It is a dry plate of unlimited latitude and efficiency.

For outdoor work the value of R. O. C. The Rochester Dry Plate will be appreciated by the professional who understands the value of color, quality of light, and the degrees of speed; by the amateur who desires a result of uniform quality; finally, by every photographer who wishes to profit by this most important advance of the art.

R. O. C. The Rochester Dry Plate is on sale to-day in every state in the Union. The plates are made in all the popular sizes.

SIZE	PRICE	SIZE	PRICE
2½ x 2½, per dozen	\$.25	5 x 7, per dozen	\$1.10
3½ x 3½, per dozen40	5 x 8, per dozen	1.25
3½ x 4½, per dozen45	6½ x 8½, per dozen	1.65
4 x 5, per dozen65	8 x 10, per dozen	2.40
4½ x 6½, per dozen90	11 x 14, per dozen	6.00

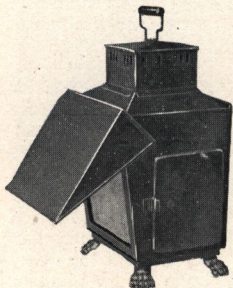
ROLL FILMS We are prepared to furnish Eastman Cartridge Roll Films, for use with roll holders in our Premo cameras. This product is too well known to need extended mention. Prices: 3½ x 4½, 12 exposures, 70 cts.; 4 x 5, 12 exposures, 90 cts.; 5 x 7, 12 exposures, \$1.60.

SNAPPA CUT FILMS Premo Cameras are so constructed as to carry cut films very advantageously, with the addition of a film kit or in a film holder. Experience has shown that Snappa Cut Films are to be depended upon for good results under all conditions. They are loaded and manipulated just like plates. They are made especially for us by the M. A. Seed Dry Plate Co. Prices: 3½ x 4½, per dozen, 70 cts.; 4 x 5, per dozen, 90 cts.

ACCESSORIES

RUBY CANDLE LAMP This is a new dark room lamp, compact in design and made of heavy tin. It is neatly lacquered and provided with a safety shield covering the opening to be occupied by the ruby glass slide. The lamp uses a large candle, enclosed in a substantial cup. Price of lamp complete: 30 cts.; candles per dozen, 40 cts.

UNIVERSAL DARK ROOM LAMP This is a popular and moderate-priced lamp we have been making for a number of years, and the demand for it increases each season. It has a combination ruby and orange glass for use singly or together as in the case of ortho plates. It has a broad wick, regulated from the outside, and an adjustable shield. Prices: Size No. 1, 80 cts.; size No. 2, \$1.00.

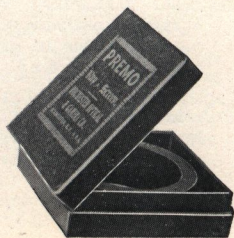


PREMIER LAMP This lamp has distinct features which make it popular with advanced amateurs who develop and print their own negatives. It affords three different forms of light. The front light is a soft 7 x 8 ruby light for developing. The door on the left side when opened will give a clear white light for use in printing developing papers, bromide papers or transparencies. The door on the right side when opened gives a soft white, opal light for examining negatives or transparencies. Price, \$3.75.

ROCHESTER NEGATIVE RACK This is a very neat and substantial rack, made of the best seasoned cherry, accommodating a negative of any size. It folds up flat when not in use and is available for holding negatives while drying, preventing all rubbing and scratching. Prices: No. 1, for 12 negatives, 20 cts.; No. 2, for 24 negatives, 25 cts.

ROCHESTER NEGATIVE SAFE This safe accommodates fifty negatives in the $3\frac{1}{4} \times 4\frac{1}{4}$, 4 x 5 or 5 x 7 size. They may be stored free from danger of breakage and are not exposed to the atmosphere or dust. The safe is substantially made and is covered with grained leather. It has a drop door in front with a memorandum tablet corresponding to the numbers of the shelves within. When the safe is filled with negatives reference to the memorandum table easily locates the desired negatives. Prices: $3\frac{1}{4} \times 4\frac{1}{4}$, \$3.00; 4 x 5, \$3.50; 5 x 7, \$4.00.

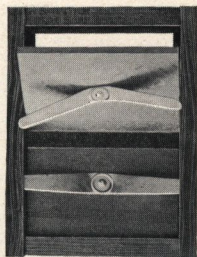
PREMO RAY SCREEN This screen is designed for cloud effects, etc., and is of great value in out-door photography, screening out the violet and blue rays of light, which act more strongly on the plate than any other color, and at the same time giving a more equal exposure to the sky, clouds, and landscape. Prices: No. 1, diameter, $1\frac{1}{2}$ ins., will fit lens of diameter $1\frac{1}{4}$ ins., 40 cts.; No. 2, diameter, 2 ins., will fit lens of diameter $1\frac{3}{4}$ ins., 50 cts.; No. 3, diameter, $3\frac{1}{4}$ ins., will fit lens of diameter $2\frac{3}{8}$ ins., 75 cts.



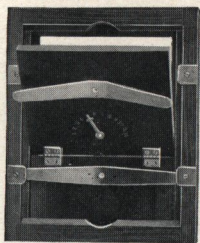
ACCESSORIES

AMATEUR PRINTING FRAME

This printing frame is light and strong; made of the best seasoned cherry, and with first quality spring brass mountings. It is in finish and construction, as well as durability, that the Amateur excels. Prices: $3\frac{1}{2} \times 3\frac{1}{2}$, 25 cts.; $3\frac{1}{2} \times 3\frac{1}{4}$, 25 cts.; 4×5 , 25 cts.; $4\frac{1}{4} \times 6\frac{1}{2}$, 35 cts.; 5×7 , 35 cts.



ROCHESTER PRINTING FRAME



Very heavy and substantial in construction. Made of seasoned cherry.

The springs are of the finest brass, riveted to the back. A tongue and groove at the back of the frame, where the two parts hinge, prevent the entrance of any light. At the back is a tally for recording the number of prints made. Prices: $4\frac{1}{4} \times 6\frac{1}{2}$, 42 cts.; 5×7 , 50 cts.; $6\frac{1}{2} \times 8\frac{1}{2}$, 60 cts.; 8×10 , 75 cts.; 11×14 , \$1.80; 14×17 , \$2.40; 16×20 , \$3.00; 20×24 , \$5.00.

CYCLONE PRINTING FRAME

This frame is made of japanned iron of the first quality, and will not warp or twist. It is non-breakable, light and convenient. The frame has an easel attachment, which permits it to be placed at any angle. It casts no shadow when printing. It prints to the size of the plate, and offers other advantages of the most important nature. Prices: $3\frac{1}{2} \times 3\frac{1}{2}$, 25 cts.; $3\frac{1}{4} \times 4\frac{1}{4}$, 25 cts.; 4×5 , 25 cts.



SIMPLEX PRINTING FRAME $2\frac{1}{2} \times 2\frac{1}{2}$, designed for the Cyclone Primer. Price: 15 cts.

CARD MOUNTS We are listing this year exclusive effects in card mounts, the stock used being of superior quality, confined to the prevailing colors of the season, Carbon Black and Scotch Gray. These mounts have been designed especially for us, and in style and finish are superior to any creations on the market to-day. Both have beveled edges.

Carbon Black or Scotch Gray, Plain				Carbon Black or Scotch Gray, Embossed and Printed Border			
No.	For Pictures	Per 100	Per 1000	No.	For Pictures	Per 100	Per 1000
601	$3\frac{1}{4} \times 4\frac{1}{4}$	\$1.25	\$ 9.50	701	$3\frac{1}{4} \times 4\frac{1}{4}$	\$1.60	\$12.00
602	4×5	1.75	11.00	702	4×5	2.00	15.00
603	5×7	2.15	14.00	703	5×7	3.00	22 00

ACCESSORIES

DEVELOPERS We present this year to the public a new line of developers, which in quality and excellence surpass any similar products on the market. Primarily calculated and compounded for our R. O. C. Dry Plates, their chemical composition is so well balanced that the very best results can be obtained with them on any other plate or film manufactured in this country. These developers are put up in glass vials.

PYRO SODA—Excellent for negative work, especially recommended for professional workers. Box containing 5 sets of powders, 50 cts.

METOL HYDROQUINONE—Recommended for general work (plates or films), daylight developing papers, bromide papers, negative papers, etc. Box containing 5 sets of powders, 50 cts.

HYDROQUINONE—Suitable for all kinds of negative work. Box containing 5 sets of powders, 50 cts.

R. O. C. GLYCIN—For studio and general amateur work it is simply perfection. Box containing 5 sets of powders, 75 cts.

ARISTO PRINTING-OUT PAPER A reliable photographic printing-out paper. It will print with brilliant high lights, giving silky half-tones and rich, transparent shadows.

Size	Dozen	Gross	Size	Dozen	Size
2 1/2 x 2 1/2	2 Doz., \$.20	\$1.00	5 x 7	1 Doz., \$.30	\$2.65
3 1/4 x 4 1/4	2 Doz., .20	1.15	5 x 8	1 Doz., .30	3.00
3 1/2 x 3	2 Doz., .20	1.15	6 1/2 x 8 1/2	1 Doz., .45	4.25
3 7/8 x 5 1/2	1 Doz., .20	1.35	8 x 10	1 Doz., .60	6.50
4 x 5	2 Doz., .25	1.25			

VELOX PAPER Can be both printed and developed by gas or lamp light, and a beautiful effect of both platinum and carbon is obtained.

Size	Dozen	Gross	Size	Dozen	Gross
2 1/2 x 2 1/2	1 Doz., \$.15	\$1.00	5 x 7	1 Doz., \$.35	\$3.50
3 x 3	1 Doz., .15	1.50	5 x 8	1 Doz., .40	4.00
3 1/4 x 4 1/4	1 Doz., .15	1.50	6 1/2 x 8 1/2	1 Doz., .60	6.00
3 5/8 x 5 1/2	1 Doz., .25	2.00	8 x 10	1 Doz., .80	9.00
4 x 5	1 Doz., .25	2.00			

DEVELOPING AND PRINTING We have exceptional facilities for finishing the plate or film negatives made by amateur photographers, who prefer to have this work done for them.

Size of Camera	Developing, Printing and Mounting	Developing Only	Printing and Mounting Only
3 1/4 x 4 1/4	10 cts. each	4 cts. each	6 cts. each
4 x 5	13 cts. each	5 cts. each	7 cts. each
5 x 7	20 cts. each	6 cts. each	10 cts. each
5 x 8	20 cts. each	6 cts. each	10 cts. each
6 1/2 x 8 1/2	30 cts. each	10 cts. each	20 cts. each
8 x 10	35 cts. each	12 cts. each	24 cts. each

ACCESSORIES

DEVELOPING AND PRINTING OUTFITS As a result of careful study we have prepared a series of developing and printing outfits, specially adapted to the use of the amateur. These are made in two sizes, $3\frac{1}{4} \times 4\frac{1}{4}$ and 4×5 .

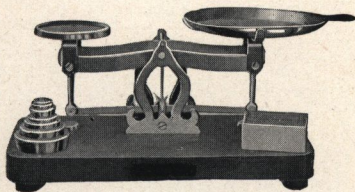
PREMO OUTFIT No. 1—3 fibre trays, 1 bottle of developer, 1 printing frame, 1 pound of hypo, 1 tube of paste, 1 ruby lamp, 1 measuring glass, 1 dozen printing paper, 1 tube developer, 1 book of instructions, 1 negative rack. Price: \$2.00.

SPECIAL R. O. C. OUTFIT—3 fibre trays, 1 bottle of developer, 1 ruby lamp, 1 printing frame, 1 pound hypo, 1 dozen printing paper, 1 negative rack, 1 tube M. Q. developer, 1 tube paste, 1 paste brush, 1 dozen card mounts, 1 print roller, 1 measuring glass, 1 book of directions. Price: \$3.00.

CYCLONE PRIMER OUTFIT—3 fibre trays, 1 bottle of developing powder, 1 printing frame, $\frac{1}{2}$ pound hypo, 1 ruby lamp, 1 measuring glass, 1 dozen printing paper, 1 book directions. Price: \$1.00.

THE R. O. C. SCALE

This scale has been especially constructed by us to cover the whole range of photographic work. It is supplied with a set of drachm, scruple and grain weights and a complete set of avoirdupois weights from one-sixteenth up to two ozs. Polished wooden base. It is well finished and reliable. Price: \$3.00.



PREMO OPTICAL OUTFIT The uses of this outfit are varied and it possesses advantages which the amateur who desires to fully realize the pleasures of photography will fully appreciate.



While the lenses included in this outfit are only supplementary, nevertheless they give the owner of a good objective lens the advantage of five different focal lengths. The Ray Filter, for cloud effects, and the Duplicator, by the use of which an object may be photographed in two positions on the same plate, are valuable additions to the outfit of any photographer. The Premo Optical

outfit is put up in a plush lined leather case and the price quoted below includes all the above instruments. Any one of them, however, may be purchased separately if desired.

- A-OUTFIT, diameter of lens frames $1\frac{5}{16}$, for 4×5 Premo, and all other makes with lens hoods less than $1\frac{5}{16}$ \$6.00
- B-OUTFIT, diameter with lens frames, $1\frac{5}{16}$ for 5×7 Premos, etc. 6.00

“THE AMATEUR PHOTOGRAPHER” 25TH EDITION.

ENLARGED AND REVISED. During the past year “The Amateur Photographer” has been revised and largely rewritten under the editorship and direction of Dr. John Nicol, who is regarded as being one of the leading photographic authorities of the day. The book gives a thorough exposition of every process of picture-taking, developing and printing. “The Amateur Photographer” has come to be regarded as an invaluable work, not alone to the beginner but to the advanced amateur as well. It tells how to secure the best results; gives definite formulas of value to every possessor of a camera. Price: 25 cts.

PHOTOGRAPHIC SUPPLIES

	PRICE \$.80		PRICE \$4.00
Absorbent Cotton, per pound20	Fronts, 8 x 10	5.00
Adhesive, 4 oz. jar35	Fronts, Stereo15
Adhesive, 8 oz. jar10	Glass Funnels, ½-pint30
Adhesive, 1 oz. tube15	Glass for No. 1 or No. 2 Universal Lamps, Orange or Ruby40
Adhesive, 2 oz. tube20	Graduated Glasses, 4 ounce50
Adhesive, 4 oz. tube25	Graduated Glasses, 8 ounce60
All Mill Head Nuts and Screws	2.00	Graduated Glass Frames, 4 x 5	1.00
Bellows for 4 x 5 Folding or Pony Premos	2.50	Graduated Glass Frames, 5 x 7	1.25
Bellows for 5 x 7 Folding or Pony Premos	3.00	Graduated Glass Frames, 6½ x 8½15
Bellows for 4 x 5 Pony Premo No. 6	4.00	Graduated Glass Frames, 8 x 1020
Bellows for 5 x 7 Pony Premo No. 6	5.00	Ground Glass, 4 x 525
Bellows for 6½ x 8½ Pony Premo No. 6	8.00	Ground Glass, 5 x 730
Bellows for 5 x 7 Long Focus Premo	10.00	Ground Glass, 6½ x 8½40
Bellows for 6½ x 8½ Long Focus Premo	12.00	Ground Glass, 8 x 1040
Bellows for 8 x 10 Long Focus Premo	4.00	Hypso-sulphite of Soda, 1 lb. box	5.00
Bellows for Carlton and Universal, 5 x 7	5.00	Iconoscope Finder, Size "A"	5.50
Bellows for Carlton and Universal, 6½ x 8½	6.00	Iconoscope Finder, Size "B"	6.00
Bellows for Carlton and Universal, 8 x 10	8.00	Iconoscope Finder, Size "C"25
Bellows for Carlton and Universal, 11 x 14	4.00	Lens Boards for Premo Cameras40
Bellows for Empire State, 5 x 7	4.00	Lens Boards for Stereo Cameras40
Bellows for Empire State, 6½ x 8½	5.00	Lens Boards for View Cameras, up to 8 x 1070
Bellows for Empire State, 8 x 10	6.00	Lens Boards for View Cameras, larger	1.05
Bellows for Empire State, 11 x 14	8.00	Magnesium Powder, pure, 2 oz. bot.15
Bellows for Empire State, 14 x 17	10.00	Measuring Glasses, 4 ounce60
Blotting Paper, 19 x 24, per dozen	1.00	Orange or Ruby Fabric, per square yard25
Brushes, Camel's Hair, 2 inches wide50	Orange or Ruby Fabric, per doz.14
Brushes, Camel's Hair, 3 inches wide80	Patent Fluted Funnel, 1 pint20
Brushes, Bristle, 1 inch15	Premo Flash Powder, (seven cart- ridges in box)25
Brushes, Bristle, 2 inches wide25	Premo View Finder	1.50
Brushes, Bristle, 3 inches wide40	Premo Spirit Level40
Bulbs and Tubes to fit any Shutter, 18 inches in length35	Print Roller, 4 inch20
Cycle Camera Carrier50	Print Roller, 6 inch30
Electrode Developing Trays, 3¼ x 4¼18	Reversible Backs for View Cameras, 5 x 7	7.50
Electrode Developing Trays, 4 x 520	Reversible Backs for View Cameras, 6½ x 8½	9.00
Electrode Developing Trays, 5 x 738	Reversible Backs for View Cameras, 8 x 10	11.00
Electrode Developing Trays, 5 x 840	Reversible Backs for View Cameras, 11 x 14	14.00
Electrode Developing Trays, 6½ x 8½55	Screws for Tripods Nos. 1, 2 and 325
Electrode Developing Trays, 8 x 1080	Screws for Tripods Nos. 4 and 540
Electrode Fixing Bath, 4 x 5	2.00	Shoulder Straps, 36, 42 and 48 inches25
Electrode Fixing Bath, 5 x 8	3.00	Shoulder Straps, 54, 56 and 60 inches30
Focusing Cloth, velvet	1.00	Shoulder Straps, 66 inches40
Focusing Cloth, Gossamer, plain or plaid50	Snappa Plate and Film Carriers10
Fronts, 4 x 5	2.50	Snappa Magazine	3.50
Fronts, 5 x 7	3.00	Tops for Tripod75
Fronts, 6½ x 8½	3.50	Tubing, per foot10

BAUSCH & LOMB RAY FILTER

Number	1	2	3	4	5	6	7	8	
Inside diameter in inches	1¾	2¼	2¾	3	3½	3¾	4¼	4¾	
Price	\$3.25	3.50	3.50	4.00	4.50	5.00	5.50	6.00	
Morocco Cap, extra70	.70	.75	.80	.90	1.00	1.10	1.20	
Price of Style 1 P									\$3.25

LENS FLANGES

Number	1	2	3	4	5	6	7	8	9	10	11
Diameter, inches	1½	1¾	2	2¼	2½	3	3½	4	5	5½	6
Price, each,	\$.50	.50	.75	1.00	1.00	1.25	1.50	1.75	2.00	2.50	3.00

LENS CAPS

Number	1	2	3	4	5	6	7	8	9	10	11	12
Diameter, inches	1½	1¾	1¾	2¼	2¾	2¾	3	3½	3¾	4¼	4¾	5¾
Price, each	\$.60	.60	.65	.70	.70	.75	.80	.90	1.00	1.10	1.20	1.25

