

# HAWK=EYES





OUR first step in designing a camera is to consider carefully just what it is expected to accomplish, study the conditions under which it must be used, and then construct such camera to meet those requirements. We have added a number of new designs to our list, and each Hawk-Eye has some special feature that will meet the requirements of the most exacting purchaser.

We invite a careful perusal of the following pages, where will be found a description of our entire line of Hawk-Eyes, and accessories, and we hope that such products may find a good representation in the stock of all dealers.

During the past year we have greatly improved our manufacturing facilities by adding labor-saving, up-to-date machinery, thus increasing our capacity of production and decreasing the cost of manufacture.

We solicit the correspondence of all dealers or consumers and will gladly extend to them any information we can that will be of assistance in making a selection.

Thanking our friends for the valued patronage with which we have been favored in the past and hoping our future relations may prove equally as pleasant, we remain,

Respectfully,

BLAIR CAMERA CO., Rochester, N. Y.





## THE CAMERA.



WHO does not at intervals love to shuffle off time and its concerns, forget the ache that pains him most, and seek pleasure pure and simple amid the haunts of nature. To him who holds a camera this old and weather-beaten earth becomes transformed. The much quoted words of the ancient proverb maker, who said there was no new thing under the sun, finds no response. With the first silver streak of the morning all things appear new, and with the golden light of each succeeding hour, grows more beautiful, wonderful, and absorbing. As long as sunbeam chases sunbeam across the brook-kissed meadow, and over the broad river rests the warm sunlight with kindly glow, and the shadows play their hide and seek along the majestic steeps of the grand and tranquil mountains, so long will man with cheerfulness in his heart and a camera in his hand go forth to search out the picturesque and make it his.

As the musician and the poet educate the sense of hearing, so the camera-man quite unconsciously increases his capacity for appreciating the beautiful and artistic.

Life is a series of pictures and many of them come our way but once. Memory at best is but a broken net from which escape the brightest impressions received along the way, while too often those of deeper shadows it holds tight within its folds.

If you are not a presser of the button and a squeezer of the bulb you are not getting the most out of life. You are cheating yourself of your recollections, which should be your treasure house.

A camera is a cheerful companion and a fascinating instructor. Through its eye the world looks young. A continuous sequence of

varied pleasure and infinite delight follows in its train. Its pictures make the home of the camerist more than attractive, peopling it with the groups of fancy and the society of remembrance.

And when the hot breath of summer blows in stifling gusts from the dusty street of the city, or the chilling wind and snow of winter hold you in their grasp, these pictures will transport you as if by enchantment to the fresh air and bright sun, to the murmur of leaves and water, and enable you, as in a pleasant dream, to cast off the cares and discomforts of life.

## STEREOGRAPHY.

But little attention has been given to this branch of photography in the past, which has been due to the general belief that the professional photographer only was capable of making Stereographs. Bulky outfits for this work have been offered to the public from time to time, but the cost has been so excessive and the mechanism so complicated that the making of such views has been beyond the reach of the average amateur.

The Stereo Weno Hawk-Eye, as described on page 25, which is now offered to the public, has revived this branch of photography and permits the making of Stereographs with a daylight loading pocket camera in such a simple manner that the beginner need not fear the undertaking of such work. Surely Stereographs of home scenes or familiar spots will prove more interesting than the views of foreign lands sold by the picture dealer.

But what is the difference between a photograph and a Stereograph? The regular photograph is made through a single lens opening and shows the object or view as seen with one eye closed; thus, what might be termed a one-eyed vision is obtained. Photographs recall many pleasant recollections and aid us to piece out our incomplete vision with the help of memory and comparison, guessing



at solidity on the hint of suggestive shadows here and there, and in spite of their one-eyed vision are wonderfully suggestive of the experience of direct vision.

The Stereograph is made with two lenses, the distance between them equalling the average distance between a person's eyes. Thus, the same impression is taken as in direct vision, and while the result from one lens seems a duplicate of the other, such is not the case. In order to combine the two impressions into one the use of a Stereoscope is necessary. A Stereoscope is composed of two obliquely set Stereoscopic lenses, which permits viewing the Stereograph through both eyes, thus experiencing the sensation of actually looking at the things themselves. Stereographs then give the very same visual impression that we should receive in the presence of the actual things. In fact, they allow seeing things as they are, thus producing perfect perspective.

## OUR CAMERAS.

All cameras of our manufacture are known as Hawk-Eyes. The first design was offered to the public in 1881 and was a bulky affair for use of plates only. Changes have been made from time to time, and the Hawk-Eye of to-day, while only a pocket edition compared with its predecessor, embodies improvements hitherto unattainable. Our latest models are fitted with double lenses, Iris diaphragm automatic shutters, load and unload in broad daylight, register the different exposures, count them automatically, and use either perforated or cartridge daylight loading film.

The advantage of using a camera adapted for both kinds of film will be fully appreciated, especially by the tourist, as this overcomes the difficulty of obtaining material when travelling, as all dealers in photo supplies always have in stock film that will fit the Hawk-Eye.

## HOW MADE.

Hawk-Eyes are built on the interchangeable plan, with everything made to fit. All parts are accurately made so that no extra fitting is required, and a part taken from one Hawk-Eye is interchangeable with a corresponding part from a similar camera.

The wood parts are made up of sectional pieces, which prevents all warping, shrinking or swelling. The best leather obtainable is used for covering and constructing the bellows. In fact, all material used is the best obtainable, as experience has taught us that quality should be considered before cost when making selection of stock for use in the process of manufacture.

## LENSES.

The road to photographic success leads directly through the lens. A good photograph can never be made with a poor lens. All lenses used in the Hawk-Eye are of the finest quality obtainable, strictly achromatic, and guaranteed to produce sharpness to the extreme corners. Realizing that the popularity of the Hawk-Eye is largely due to the superiority of the lens, we are not content with the test made by the inspector of the manufacturer, but before sending out, each lens is given the most rigid test by our inspector, and if the slightest defect is discovered such lens is rejected.

All Hawk-Eye lenses are of sufficient focal length to overcome distortion, and of rapidity which permits picture making at all seasons of the year under varying conditions. We feel that we can safely guarantee each lens as the very best in its class, whether it be a single or a double.

## SHUTTERS.

The Hawk-Eye shutter, as supplied with our moderate price cameras, is adapted for both time and instantaneous work. In mak-



ing snap shots the speed can be regulated in accordance with the strength of light, which permits properly timed negatives at all seasons of the year under varying conditions. When pressing the lever for instantaneous exposure there is no possibility of jarring the camera, as the slightest touch releases the shutter and makes the exposure. When making time exposures one pressure on the time button opens the shutter and another closes it.

Diaphragms for reducing or enlarging the size of the lens aperture are provided. There is no guess work, as the lever can be pushed but one way, which will make the exposure readily.

All folding Weno Hawk-Eyes are fitted with Bausch & Lomb automatic shutters with Iris diaphragm and bulb or finger release.

## INSTRUCTIONS.

Complicated mechanism is avoided in the construction of Hawk-Eyes, and the matter of making exposures is very simple and the beginners need but little information. We supply with each Hawk-Eye a book of directions which explains in a simple manner all about loading and unloading, making exposures—either instantaneous, time or flash light—and how to develop and finish the picture. By following such instructions mistakes will be avoided from the start and success can be expected by the beginner.

## PERFORATED DAYLIGHT LOADING FILM.

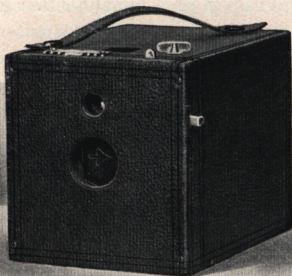
This film, which is manufactured for use in the Hawk-Eye only, is composed of a very sensitive emulsion coated upon a transparent material. This produces a thin rollable substance that will not break, is not heavy, and permits the storage of a number of exposures in a Hawk-Eye that can be carried in the ordinary coat pocket.

These films are put up in such a manner that it is impossible for the light to reach the sensitive surface of the material. Attached to each end of the film is a strip of black paper, which when wound upon the spool excludes the light and allows the loading and unloading of the Hawk-Eye in broad daylight.

Perforations are made in the film at regular intervals which engage a detent connected with an ingenious registering device upon the Hawk-Eye. This records the exposure, and, at the same time, moves an automatic tally which shows at a glance just the number of exposures made. In cutting up the film for development, it is impossible to make an error, as the perforations mark the division between each exposure.

When making exposures the back surface of the film comes in contact with the back cover of the Hawk-Eye, which is of a dead black finish and prevents all possibility of reflection, thus making halation impossible when using Perforated Daylight Loading Film. The old way of cartridge photography requires a black strip of paper running the entire length of the film. This, when wound upon the spool, necessitates a bulky roll besides the possibility of damaging the material owing to the impurities of the paper affecting the sensitive coating, and the imprint being visible upon the negative if kept any length of time before development. By adopting our system these difficulties are entirely overcome, as the paper does not touch the sensitive surface at all, and owing to the omission of paper, a roll containing a corresponding quantity is a trifle more than one-half of the usual size and weight. Perforated film is furnished in six and twelve exposures to the roll.





## Weno Hawk-Eye.

**Dimensions,  $4\frac{1}{4} \times 4\frac{1}{2} \times 5\frac{1}{2}$  inches.**

**Size of photo,  $3\frac{1}{2} \times 3\frac{1}{2}$  inches.**

**Weight, 20 ounces.**

**Capacity, 12 exposures.**

**Achromatic set focus lens with focal length of  $4\frac{1}{2}$  inches.**

### *PRICE LIST.*

Weno Hawk-Eye, not loaded . . . . .	\$5.00
Special Sunlight Film, 6 exposures, $3\frac{1}{2} \times 3\frac{1}{2}$ . . . . .	.30
Special Sunlight Film, 12 exposures, $3\frac{1}{2} \times 3\frac{1}{2}$ . . . . .	.60
Hawk-Eye Portrait Attachment . . . . .	.50
Black Sole Leather Carrying Case, with Shoulder Strap . . . . .	1.25

## Weno Hawk-Eye.

**T**HIS little Hawk-Eye is the most moderate priced camera which we offer, and although simple in construction it embodies many improvements not included with cameras that are furnished for twice this amount. Being in box form it is always ready for making an exposure, and many times a snap shot can be obtained under circumstances where it would be impossible to adjust a camera of folding type for making the exposure.

The lens is an achromatic set focus of sufficient length to avoid distortion. A set of three diaphragm stops for reducing or enlarging the lens aperture permits the regulation of the volume of light passing through the lens when making an exposure and allows making properly timed negatives under varying conditions.

When making snap shots the shutter can be set for a slow, medium, or rapid exposure, which enables the operator to make pictures of moving objects, landscapes or stationary subjects. For time exposures the shutter is set in the usual manner and one pressure on the time lever opens and another pressure closes it, thus permitting any length of exposure desired.

The covering is of morocco grain leather, and all metal parts of nickel finish. A square finder for centering the object, also a socket for tripod is provided. All parts are intact and when loading or unloading the possibility of losing a ratchet, rod or cover is avoided.

The film adapted for use in this Hawk-Eye is Perforated Day-light Loading, and registers the different exposures and counts them automatically and the register tally always shows just how many pictures have been taken. A ruby window is also fitted which permits the use of six-exposure Special Kodak film if desired.

**A complete camera at a small cost, very desirable for the beginner.**





## 4 x 5 Weno Hawk-Eye.

**Dimensions, 5 x 5 $\frac{1}{4}$  x 6 $\frac{1}{2}$  inches.**

**Size of photo, 4 x 5 inches.**

**Weight, 28 ounces.**

**Capacity, 12 exposures.**

**Achromatic Meniscus set focus lens with focal length of 5 inches.**

### *PRICE LIST.*

4 x 5 Weno Hawk-Eye, not loaded	\$8.00
Special Sunlight Film, 6 exposures	.45
Special Sunlight Film, 12 exposures	.90
Hawk-Eye Portrait Attachment	.50
Black Sole Leather Carrying Case, with Shoulder Strap	1.50

## 4 x 5 Weno Hawk-Eye.

**A**TTENTION is called to the fact that this Hawk-Eye is only about one-half the size of the ordinary 4 x 5 non-folding camera. In construction it resembles to a certain extent the Hawk-Eye as described on page 9.

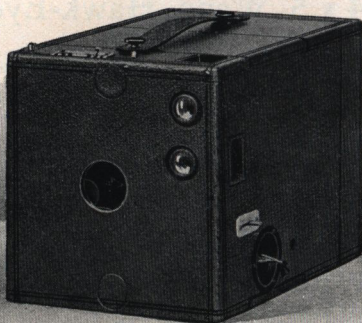
Manufacturers have in the past been unable to produce a lens of universal focus of covering capacity sufficient for this size, but through our efforts we have obtained a set focus Meniscus achromatic lens which we can guarantee to cover the field under any conditions and produce a 4 x 5 negative of wonderful sharpness, from eight feet to any distance required, at the same time obtaining great depth without distortion.

The shutter is of rotary design, evenly balanced, and works accurately when the camera is in a horizontal or vertical position; has variation of speed for snap shots and can also be set for time exposures of any length desired. Diaphragm stops with small, medium and large openings are provided. Both horizontal and vertical finders, showing the exact field covered by the lens, are placed in position for centering the object accurately. The vertical finder is of great advantage in making views of tall buildings, or any object of great height, while the horizontal will be found desirable for ordinary subjects or landscapes.

Sockets for attaching to tripod, in either position, are furnished. Nickel fittings, morocco grain covering and fine workmanship throughout make this a very desirable outfit for those who prefer a picture of rectangular form and of popular size. Fitted with automatic registering tally for Perforated Daylight Loading Film, also ruby window for six and twelve exposure No. 4 Bulls-Eye film.

**The most compact 4 x 5 non-folding film camera in existence.**





## 4 x 5 Hawk-Eye, Jr.

**Dimensions,  $5\frac{3}{4} \times 6\frac{1}{4} \times 9$  inches.**

**Size of photo, 4 x 5 inches.**

**Weight, 2 pounds 14 ounces.**

**Capacity, 12 exposures.**

**Achromatic lens with focal length of  $6\frac{1}{8}$  inches.**

### *PRICE LIST.*

4 x 5 Hawk-Eye Jr. not loaded . . . . .	\$8.00
Sunlight Film, 6 exposures, 4 x 5 . . . . .	.45
Sunlight Film, 12 exposures, 4 x 5 . . . . .	.90
Hawk-Eye Portrait Attachment . . . . .	.50
Black Sole Leather Carrying Case, with Shoulder Strap . . . . .	2.00
Double Glass Plate Holder . . . . .	.75

## 4 x 5 Hawk-Eye Jr.

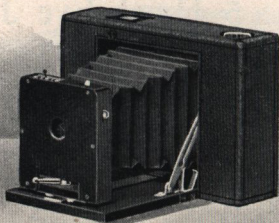
**T**HE construction of this Hawk-Eye allows the use of either film or glass plates. Necessarily the dimensions must be a trifle greater than when adapted for film only, but for those who indulge in photography mostly at home the advantage of making one or two exposures for immediate development should be considered. The lens is the very best obtainable in its class and is arranged with a lever for focusing accurately upon any object from eight feet upward. A graduated scale with figures representing the number of estimated feet that the object to be taken is from the camera, can be used in connection with the lever and always shows just where the lens is focused. Improved rotary shutter, time and instantaneous with variation of speed, tripod sockets, and view finders for both horizontal and vertical exposures, are provided. The metal parts are hand finished lacquered brass, and the covering morocco grain cowhide.

When used as a plate camera the metal rollers over which the film passes can be removed, which leaves a space sufficient for adjusting the plate holder, and by this arrangement the focus is the same when making exposure on plates as when using film. A ground glass which fits interchangeably with the plate holder will be found of great assistance for focusing and centering objects accurately, especially when making interiors or exposures in the open air with the Hawk-Eye attached to a tripod.

Perforated Daylight Loading Film of six or twelve exposures can be used in this camera and register automatically. A ruby window is fitted in the back which permits the use of No. 4 Bull's-Eye film of six and twelve exposures.

**A complete film and plate outfit of simple construction at a very small cost.**





## Tourist Hawk-Eye.

**Dimensions,  $1\frac{1}{2} \times 4\frac{1}{2} \times 6\frac{1}{2}$  inches.**

**Size of photo,  $3\frac{1}{2} \times 3\frac{1}{2}$  inches.**

**Weight, 15 ounces.**

**Capacity, 12 exposures.**

**Achromatic set focus lens with focal length of  $4\frac{3}{8}$  inches.**

### PRICE LIST.

Tourist Hawk-Eye, not loaded . . . . .	\$6.00
Special Sunlight Film, 6 exposures, $3\frac{1}{2} \times 3\frac{1}{2}$ . . . . .	.30
Special Sunlight Film, 12 exposures, $3\frac{1}{2} \times 3\frac{1}{2}$ . . . . .	.60
Black Sole Leather Carrying Case, with Shoulder Strap . . . . .	1.25
Plate Attachment, with Ground Glass and Holder . . . . .	2.00
DoubleGlass Plate Holder, $3\frac{1}{4} \times 3\frac{1}{4}$ . . . . .	.60

## Tourist Hawk-Eye.

**I**N constructing a camera of the folding type the cost is somewhat in excess of the box form, and a pocket outfit that loads in the daylight is rarely found listed at a moderate price. In constructing the Tourist Hawk-Eye we have tried to cheapen such parts as would not affect the general results obtained, while the working mechanism is equal to that of cameras offered at an advanced price. To those who travel and wish to invest but a limited amount this Hawk-Eye will surely fill all requirements, as it is capable of doing good work. The lens is an improved set focus achromatic and mounted in such manner that it can be removed and replaced without danger of altering the focus.

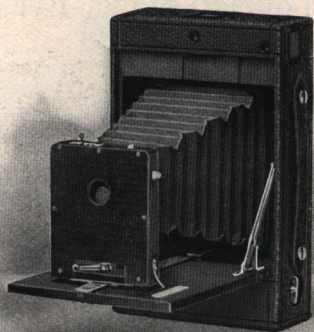
The speed of the shutter can be regulated in accordance with the strength of light when making snap shots, and one pressure on a small lever is all that is required. For a time exposure one pressure on another lever opens the shutter and a second pressure closes it. A set of three stops, accurately adjusted, view finder and a tripod socket are provided. The covering is morocco grain cowhide, and all metal parts are of brass, well finished and hand lacquered. The front bed and standard are mahogany and well polished.

When used as a plate camera the back cover is removed and the attachment replaces the back, thus adding but very little bulk. The plate attachment as listed includes a ground glass for fine focusing and one double dry plate holder.

The device for registering film exposures is fitted with automatic tally and six or twelve exposure rolls of Perforated Daylight Loading Film can be used. The back cover is also fitted with ruby window, which allows the use of Special Kodak film of six exposures.

**A pocket camera for film or plates, well adapted for the cyclist or tourist.**





## 4 x 5 Tourist Hawk-Eye.

**Dimensions, 2 x 5½ x 8¼ inches.**

**Size of photo, 4 x 5 inches.**

**Weight, 25 ounces.**

**Capacity, 12 exposures.**

**Achromatic lens with focal length of 6¼ inches.**

### *PRICE LIST.*

4 x 5 Tourist Hawk-Eye, not loaded	\$8.00
Special Sunlight Film, 6 exposures	.45
Special Sunlight Film, 12 exposures	.90
Black Sole Leather Carrying Case, with Shoulder Strap	1.50
Plate Attachment, with Ground Glass and Holder	2.50
Double Glass Plate Holder, 4 x 5	.75

## 4 x 5 Tourist Hawk-Eye.

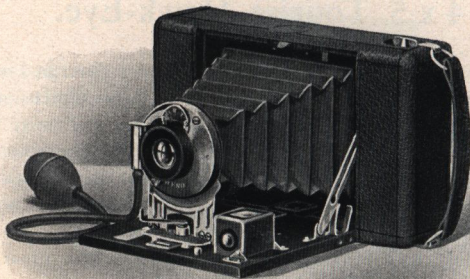
**F**OR those who prefer a camera similar to that described on page 15, but capable of making a picture of larger dimensions of a rectangular form, we recommend the 4 x 5 Tourist Hawk-Eye. While this Hawk-Eye is necessarily of larger dimensions than will permit carrying in the ordinary coat pocket, it is by no means cumbersome, and for a moderate priced camera no better selection can be made.

The lens is an achromatic of large diameter, with great depth, and will cover the field with large diaphragm under any condition. This lens is mounted to a standard which is fitted with diaphragm stops and allows focusing accurately by clamping in any position required. The shutter, which is of rotary design, has variation of speed for instantaneous exposures and can be set for any duration of time desired. Sockets for attaching tripod and finders for horizontal and vertical pictures are provided. The metal trimmings are of brass, well finished and hand lacquered. The standard and front bed are of mahogany and polished.

The method of loading is very simple and is accomplished by pressing a spring which releases the back cover and gives access to the film chambers, where the roll is placed at one end and the paper end attached to the winding reel; the cover is then replaced; all of which can be done safely in broad daylight. If found desirable to use glass plates, an attachment can be supplied which fits interchangeably with the back cover and permits focusing through a ground glass when used as a plate camera. Either Perforated Daylight Loading or No. 4 Bull's-Eye Cartridge film, in six or twelve exposure lengths, can be used in this Hawk-Eye.

**A moderate priced 4 x 5 folding camera for film or glass plates.**





## No. 3 Folding Weno Hawk-Eye.

**Dimensions,  $1\frac{5}{8} \times 4\frac{3}{8} \times 7\frac{1}{4}$  inches.**

**Size of photo,  $3\frac{1}{4} \times 4\frac{1}{4}$  inches.**

**Weight, 20 ounces.**

**Capacity, 12 exposures.**

**Double Rapid Rectilinear lens with focal length of 5 inches.**

### PRICE LIST.

No. 3 Folding Weno Hawk-Eye, with Double R. R. Lens, not loaded	\$15.00
No. 3 Folding Weno Hawk-Eye, with Single Set Focus Achromatic Lens, not loaded	13.50
Sunlight Film, 6 exposures	.35
Sunlight Film, 12 exposures	.70
Black Sole Leather Carrying Case, with Shoulder Strap	1.25
Portrait Lens Attachment	.50
Glass Plate Attachment, with Holder	3.00
Single Glass Plate Holder	.50

## No. 3 Folding Weno Hawk-Eye.

**T**HE No. 3 Folding Weno Hawk-Eye is the only pocket camera having a pneumatic release automatic shutter with Iris diaphragm stops for regular equipment. This shutter is always set and can be released by lever or bulb for instantaneous, bulb or time exposures. The Iris diaphragm stops enable the operator to guage the size of the opening according to the strength of light.

The lens supplied with the regular equipment is a double rapid rectilinear of great depth and covering capacity. For those who prefer a lens of universal focus that does not require the judgment of distances or the use of a focusing scale, we furnish a single achromatic Meniscus, which produces pictures of extreme sharpness of all objects over eight feet distant.

All folding Wenc Hawk-Eyes have brilliant reversible finders, mounted in mahogany, and carefully adjusted, covering the exact field of the lens, thus showing just what is included in the picture.

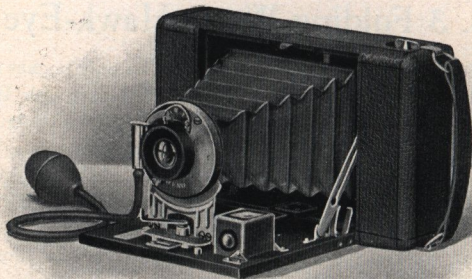
Tripod sockets for both horizontal and vertical time exposures are provided, which improvement is not embodied in any other pocket camera. A glass plate attachment is furnished extra which fits interchangeably with the back cover.

The method of adjusting and removing the film spools is extremely simple and can be accomplished safely in broad daylight. The regular film for this camera is Perforated Daylight Loading and furnished in six and twelve exposure rolls which register and count the exposures automatically. A ruby window fitted in the back allows the use of  $3\frac{1}{4}$  Special Kodak film of six exposures.

The mahogany polished front bed, the nickel fittings, morocco grain leather covering, lacquered brass shutter, and leather bellows of maroon shade, create a contrast that is most pleasing to the eye.

**An ideal outfit in pocket size, complete in every detail.**





## No. 3 Special Folding Weno Hawk-Eye.

**Dimensions, 2 x 4½ x 7⅞ inches.**

**Size of photo, 3¼ x 4¼ inches.**

**Weight, 22 ounces.**

**Capacity, 12 exposures.**

**Double Rapid Rectilinear lens with focal length of 5 inches.**

**Weno automatic shutter.**

### PRICE LIST.

No. 3 Special Folding Weno Hawk-Eye, with Double R.R. Lens, not loaded	\$15.00
No. 3 Special Folding Weno Hawk-Eye, with Single Set Focus Achromatic Meniscus Lens, not loaded	13.50
No. 3 Special Folding Weno Hawk-Eye, with B. & L. Automatic Shutter, Rising and Falling Front, and Extra Rapid Rectilinear Lens, not loaded	20.00
No. 3 Special Folding Weno Hawk-Eye, Rising and Falling Front, without lens or shutter	14.00
No. 3 Special Folding Weno Hawk-Eye, Rising and Falling Front, with B. & L. Automatic Shutter, no lens	18.00
No. 3 Special Folding Weno Hawk-Eye, with No. 1 B. & L. Plastigmat Lens, EXTRA	34.00
Sunlight Film, 6 exposures	.35
Sunlight Film, 12 exposures	.70
Portrait Lens Attachment	.50
Black Sole Leather Carrying Case, with Shoulder Strap	1.25
Glass Plate Attachment, with Plate Holder	3.00
Single Glass Plate Holder	.50

## No. 3 Special Folding Weno Hawk-Eye.

**I**N construction and finish the No. 3 Special Folding Weno Hawk-Eye is practically the same as the regular No. 3, as described on page 19. The dimensions, however, are a trifle larger in order to provide ample space for fitting all popular high-grade lenses and shutters, and also fitting special standard when desired. When furnished with regular equipment the Weno rapid rectilinear lens and automatic shutter are fitted.

As a special equipment for those who desire an outfit with the advantage of a rising and falling front, and extra rapid rectilinear lens fitted with latest improved Bausch & Lomb automatic shutter with retarding device, we can heartily recommend this Hawk-Eye.

Photography with pocket cameras has been seriously handicapped in the past owing to unsightly foreground figuring most conspicuously in the picture. By the use of the rising front, by rack and pinion, this difficulty is entirely overcome without pointing the camera upward, thus avoiding that ever common occurrence — distortion.

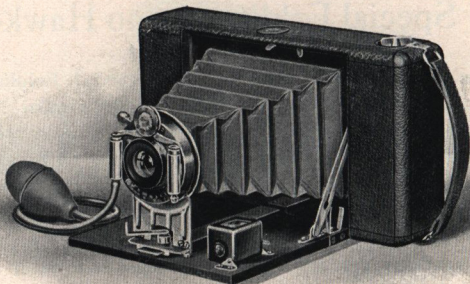
The extra rapid lens is of sufficient speed to obtain pictures of moving objects at a very short distance from the camera. Any of the standard high-grade lenses of  $3\frac{1}{4} \times 4\frac{1}{4}$  size can be readily fitted. We recommend the Bausch & Lomb Plagiot, which works at a speed of  $f/6.8$ , and has the greatest depth and covering capacity of any lens obtainable. Quotations will be given on other combinations when requested.

The back cover is fitted in such a manner that a glass plate attachment fits interchangeably.

Either Perforated Daylight Loading or No. 3 Folding Pocket Kodak film, of six or twelve exposures, fits this Hawk-Eye.

**A pocket camera, dainty in detail, possessing all the features of a professional outfit.**





## No. 4 Folding Weno Hawk-Eye.

**Dimensions, 2 x 5 x 8 $\frac{3}{4}$  inches.**

**Size of photo, 4 x 5 inches.**

**Weight, 27 ounces.**

**Capacity, 12 exposures.**

**Double Rapid Rectilinear lens with focal length of 5 $\frac{3}{4}$  inches.**

**Bausch & Lomb Automatic shutter with retarding device.**

### PRICE LIST.

No. 4 Folding Weno Hawk-Eye, with Double R. R. Lens, not loaded	\$22.50
No. 4 Folding Weno Hawk-Eye, with Single Set Focus Achromatic Meniscus Lens, not loaded	20.00
No. 4 Folding Weno Hawk-Eye, with Rising and Falling Front and Extra R. R. Lens	25.00
No. 4 Folding Weno Hawk-Eye, without lens or shutter	16.50
No. 4 Folding Weno Hawk-Eye, with B. & L. Automatic Shutter, no Lens	20.00
No. 4 Folding Weno Hawk-Eye, with No. 1 B. & L. Plastigmat Lens, EXTRA	34.00
Special Sunlight Film, 6 exposures	.45
Special Sunlight Film, 12 exposures	.90
Portrait Lens Attachment	.50
Black Sole Leather Carrying Case, with Shoulder Strap	1 50
Glass Plate Attachment, with Plate Holder	3.00
Single Glass Plate Holder	.50

## No. 4 Folding Weno Hawk-Eye.

**T**HE No. 4 Folding Weno Hawk Eye is about one-half the size and weight of other film cameras making a 4 x 5 picture.

The lens furnished with the regular equipment is strictly a high grade, rapid rectilinear, having a working speed of  $f/8$ , thus making it possible to obtain correct exposures when conditions are not favorable. Each lens has a most rigid test and is guaranteed uniform, and of great depth and covering capacity.

The shutter is the latest improved high-grade automatic, made by the Bausch & Lomb Optical Co. This shutter is always set and operates by bulb or finger release, has Iris diaphragm and works from  $\frac{1}{100}$  to 1 second, also time exposure of any duration desired.

The covering is morocco grain leather, and the wood parts of fine grain mahogany beautifully polished. The metal fittings are of nickel finish. Two tripod sockets and a reversible brilliant finder are provided.

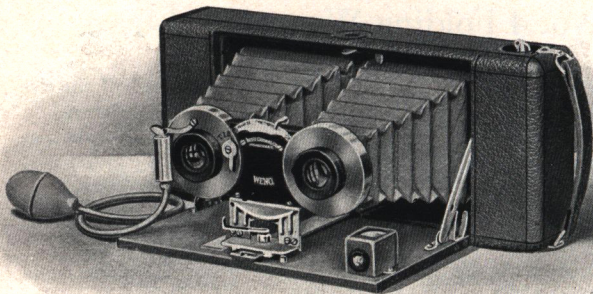
As a special equipment this Hawk-Eye is furnished with rising and falling front, the standard being entirely of metal and fitted with rack and pinion for raising and lowering the lens as required.

Lenses of the highest grade, also shutters of other design, can be fitted. We recommend the Bausch & Lomb Plastigmat lens with a working speed of  $f/6.8$ . Any standard lens of not over six inches focus can be furnished. The attachment which is supplied for those who desire to use glass plates has a spring actuating ground glass, is very compact, and fits interchangeably with the back cover.

Perforated Daylight Loading Film, in six or twelve exposure rolls, is the regular material for use in this Hawk-Eye. A ruby window allows the use of No. 4 Bull's-Eye Cartridge film.

**The ideal of simplicity and the height of perfection.**





## Stereo Weno Hawk-Eye.

**Dimensions,  $1\frac{7}{8} \times 4\frac{3}{8} \times 10\frac{1}{4}$  inches.**

**Size of photo, Standard Stereo.**

**Weight, 28 ounces.**

**Capacity, 6 exposures.**

**Double Rapid Rectilinear lenses with focal length of 5 inches.**

### *PRICE LIST.*

Stereo Weno Hawk-Eye, with Automatic Shutter and Double R. R. Lenses, not loaded	\$25.00
Stereo Weno Hawk-Eye, with Automatic Shutter, no lenses	21.00
Stereo Weno Hawk-Eye, with B. & L. No. 1 Plastigmat Lenses, EXTRA	68.00

## Stereo Weno Hawk-Eye.

**I**N the branch of photography for which this Hawk-Eye is designed realistic observation is produced by the use of two lenses, making two pictures at the same time, which, when transposed and viewed through a stereoscope, produces actual visual effects, thus giving the same impression as when looking at the things themselves.

The Stereo Weno Hawk-Eye is less than one-half the size of any other camera offered for making stereographs, and is the only camera making negatives of correct stereo size accurately matched.

The lenses are double rapid rectilinear of exactly the same focal length and speed, thus obtaining the same perspective, and consequently negatives of the same density corresponding in every detail.

The shutter is a double automatic with Iris diaphragm, is always set, and permits making instantaneous or time exposures with both lenses at the same time and of the same duration.

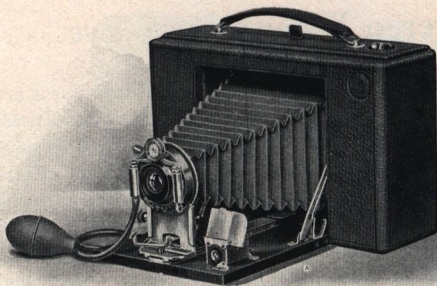
A lens cap is furnished which allows making regular photographs  $3\frac{1}{4} \times 3\frac{1}{4}$  inches. A socket for tripod and brilliant finder for centering the object are provided. The trimmings are nickel, the wood parts of polished mahogany, the covering of the best morocco grain leather, and the camera throughout is beautifully finished.

A ruby window which is fitted in the back allows the use of Cartridge film of twelve exposures,  $3\frac{1}{4} \times 4\frac{1}{4}$ , which is of sufficient length for six stereo negatives.

Any of the standard high-grade lenses with focal length of not over five inches can be fitted. The No. 1 B. & L. Plastigmat is of the highest type and especially adapted for this branch of photography.

**A Daylight Loading Stereo outfit complete, in pocket form, guaranteed to produce perfect perspectives.**





## No. 3 Focusing Weno Hawk-Eye.

**Dimensions,  $3\frac{1}{2} \times 5\frac{5}{8} \times 9\frac{5}{8}$  inches.**

**Size of photo,  $3\frac{1}{4} \times 4\frac{1}{4}$  inches.**

**Weight,  $3\frac{1}{2}$  pounds.**

**Capacity, 12 exposures.**

**Double Extra Rapid Rectilinear lens with focal length of 6 inches.**

### PRICE LIST.

No. 3 Focusing Weno Hawk-Eye, with B. & L. Automatic Shutter and Extra R. R. Lens, not loaded . . . . .	\$27.50
No. 3 Focusing Weno Hawk-Eye, without lens or shutter . . . . .	23 00
No. 3 Focusing Weno Hawk-Eye, with B & L. Automatic Shutter, no lens . . . . .	25.00
No. 3 Focusing Weno Hawk-Eye, with No. 1 B. & L. Plastigmat Lens, EXTRA . . . . .	34.00
Sunlight Film, 6 exposures . . . . .	.35
Sunlight Film, 12 exposures . . . . .	.70
Black Sole Leather Carrying Case, with Shoulder Strap . . . . .	2.25

## No. 4 Focusing Weno Hawk-Eye.

**Dimensions,  $3\frac{1}{2} \times 6\frac{1}{2} \times 10\frac{1}{4}$  inches.**

**Size of photo, 4 x 5 inches.**

**Weight, 4 pounds.**

**Capacity, 12 exposures.**

**Double Extra Rapid Rectilinear lens with focal length of  $6\frac{1}{2}$  inches.**

### PRICE LIST.

No. 4 Focusing Weno Hawk-Eye, with B. & L. Automatic Shutter and Extra R. R. Lens, not loaded . . . . .	\$30.00
No. 4 Focusing Weno Hawk-Eye, without lens or shutter . . . . .	23.00
No. 4 Focusing Weno Hawk-Eye, with B. & L. Automatic Shutter, no lens . . . . .	27.00
No. 4 Focusing Weno Hawk-Eye, with No. 2 B. & L. Plastigmat Lens, EXTRA . . . . .	40.00
Special Sunlight Film, 6 exposures . . . . .	.45
Special Sunlight Film, 12 exposures . . . . .	.90
Black Sole Leather Carrying Case, with Shoulder Strap . . . . .	2.50

## Nos. 3 and 4 Focusing Weno Hawk-Eye.

**T**HIS new design of Hawk-Eye construction will meet the demand of the advanced amateur, as they are so constructed as to use Daylight Loading Film and have the advantage of focusing the object of full size upon a ground glass.

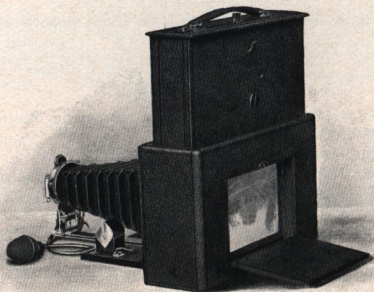
The section of the camera embodying the film chambers telescopes, and when drawn upward a spring actuating ground glass adjusts itself automatically in the same focal plane as the film, which allows focusing and centering the object accurately.

After focusing, the film section is pushed in position, and, at the same time, the ground glass moves backward to its original place.



This focusing improvement does not in any way hinder the use of this camera as a simple snap shot outfit, as focusing can be accomplished in the usual manner by use of the graduating scale.

The long focus rapid rectilinear lens works at a speed of  $f/8$ , and the extreme length of the bellows allows focusing on an object at only eighteen inches from the lens.



The front bed is fitted with a rack and pinion for fine focusing and the standard has a rising, falling and sliding adjustment.

The shutter is the latest improved B. & L. Automatic, with Retarding Device, making exposures from  $\frac{1}{100}$  to one second with great accuracy, also time exposures of any duration. The shutter being of standard opening permits the fitting of the famous B. & L. Plastigmat, or any high-grade lenses.

A brilliant reversible finder with hood, and sockets for attaching tripod for horizontal and vertical pictures, are provided. Adapted for Perforated Daylight Loading or No. 4 Bulls-Eye Cartridge film.

**A camera embodying all the best features of film and plate outfits, and can be readily termed "two in one."**

# Perforated Daylight Loading Film.

Attached to each end of the film is a strip of black paper, which excludes the light when wound upon the spool, and allows loading and unloading by daylight. Perforations at regular intervals engage a detent, which, connected with the register, records the exposures and counts them automatically.

2 x 2½, 12 exposures	. . . \$ .40	3¼ x 4¼, 12 exposures	. . . \$ .70
3½ x 3½, 6 "	. . . .30	4 x 5, 6 "	. . . .45
3½ x 3½, 12 "	. . . .60	4 x 5, 12 "	. . . .90
3¼ x 4¼, 6 "	. . . .35	5 x 7, 12 "	. . . 1.60

In ordering film always state the style of Hawk-Eye for which it is intended.

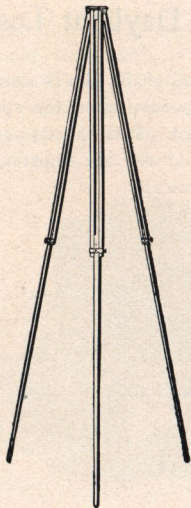
## Roll Film.

For former Model Cameras and Roll Holders.

3¼ in., 25 exposures, 3¼ x 4¼,	\$1.20	5 in., 25 exposures, 5 x 7,	\$3.00
3¼ " 50 " 3¼ x 4¼,	2.40	5 " 50 " 5 x 7,	6.00
3¾ " 25 " 3½ x 3½,	1.10	5¼ " 25 " 5 x 7,	3.00
3¾ " 50 " 3½ x 3½,	2.20	5¼ " 50 " 5 x 7,	6.00
4 " 25 " 4 x 5,	1.65	6½ " 25 " 6½ x 8½,	4.40
4 " 50 " 4 x 5,	3.30	6½ " 50 " 6½ x 8½,	8.80
4¼ " 25 " 4 x 5,	1.65	8½ " 25 " 8½ x 6½,	4.40
4¼ " 50 " 4 x 5,	3.30	8½ " 50 " 8½ x 6½,	8.80

When ordering film always state in what camera it is to be used.





## Weno Tripod.

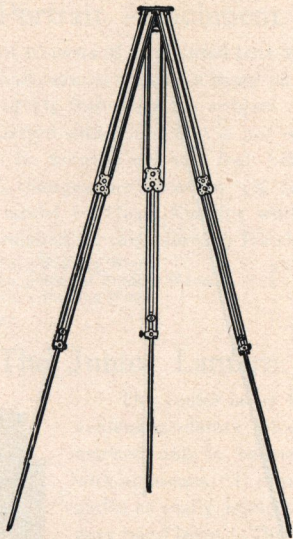
This tripod is designed for use with small cameras. The top is attached to the legs in such a manner that it is not necessary to remove when folding, which is an advantage, as the tripod is always ready for use.

The wood used is straight grain spruce with shellac finish, the trimmings of lacquered brass.

The weight complete, with head and screw, is but 17 ounces.

The length when extended can be made to vary from 34 to 54 inches. The length when folded is but 29½ inches.

Price . . . . . \$1.25



## Hawk-Eye Tripod.

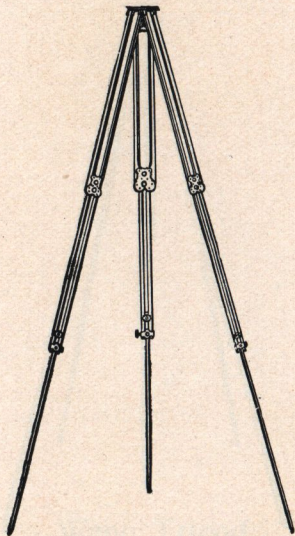
This tripod is three-fold and very compact. In its manufacture nothing but the best selected straight grain spruce is used, and all trimmings are of lacquered brass. A special feature is the metal head, which is made in one piece, which does away with brazing and avoids all possibility of being easily broken. The length when extended is 56 inches; when folded, 21 inches; weight, 20 ounces.

The construction is such that for the weight this is, without question, the most rigid in existence.

We recommend this tripod for use with any camera up to and including 5 x 7 in size.

Price . . . . . \$2.00





## Special Hawk-Eye Tripod.

The wood parts of this tripod are of maple and mahogany finished. In construction it is similar and in dimensions the same as the Hawk-Eye tripod described on preceding page. Furnished with metal or wooden head, as desired. This tripod is very rigid, and the beautiful finish makes it very desirable for use with high-grade outfits. Weight, 30 ounces.

Price . . . . . \$2.50

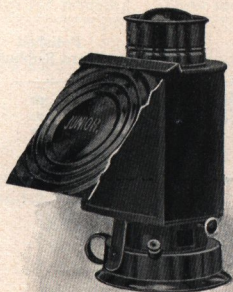
## Portrait Attachment.

This attachment consists of a mounted lens which fits in front of the regular lens and permits making a sharp picture with a fixed focus at a distance of  $3\frac{1}{2}$  feet from the subject. When using the attachment in connection with a lens that is not of universal focus, the camera should be focused on 100 feet before applying the portrait lens, which changes the focus to  $3\frac{1}{2}$  feet. In ordering, always specify the model of Hawk-Eye for which it is intended. These lenses are furnished for the following Hawk-Eyes :

$3\frac{1}{2} \times 3\frac{1}{2}$ Weno.	No. 3 Folding Weno.	$3\frac{1}{2} \times 3\frac{1}{2}$ Hawk-Eye, Jr.
$4 \times 5$ Weno.	No. 3 Special Folding Weno.	$4 \times 5$ Hawk-Eye, Jr.
	No. 4 Folding Weno.	

Price, complete . . . . . \$ .50

## The Junior Lantern.



The Junior is by far the most convenient moderate priced lantern on the market, and is becoming very popular with amateurs. It requires no more care and is as easily manipulated as an ordinary hand lamp. The flame is regulated from the outside and gives a clear, steady light, perfectly safe and efficient for the dark room. The cover lowers from the top, remaining in any position in which it is placed, and serves for a reflector as well as a shade for the eyes.

This lantern has space for both orange and ruby glass, which are included, but they can be replaced with other colors if required.

Price, . . . . . \$1.00



## Plate Holders.

In ordering plate holders it is always best to mention the camera in which they are to be used, so as to avoid the possibility of delay or error. All holders are made of selected cherry, and the slides can be furnished either of water-proof cardboard or hard rubber.

Size.	With Board Slides.	With Rubber Slides.	Size.	With Board Slides.	With Rubber Slides.
3 1/4 x 3 1/4	\$ .60	\$ .85	5 x 8	\$1.35	\$1.60
3 1/4 x 4 1/4	Single	.50	6 1/2 x 8 1/2	1.60	2.00
4 x 5	"	.50	8 x 10	1.85	2.40
4 x 5	.75	1.00	10 x 12		3.50
5 x 7	1.25	1.50	11 x 14		4 00

## Slides for Holders.

Size.	Board.	Polished Hard Rubber	Size.	Board.	Polished Hard Rubber
3 1/4 x 3 1/4	\$ .10	\$ .15	6 1/2 x 8 1/2	\$ .15	\$ .30
3 1/4 x 4 1/4	.10	.15	8 x 10	.15	.40
4 x 5	.10	.20	10 x 12	.20	.50
5 x 7	.10	.25	11 x 14	.25	.55
5 x 8	.10	.25			

## Printing Frames.

(Heavy Weight.)

4 1/4 x 5 1/2	\$ .40	10 x 12	\$1.00
5 x 8	.52	11 x 14	1.80

## Special Printing Frames.

(Extra Light Weight.)

3 1/4 x 3 1/4	\$ .25	3 1/2 x 3 1/2	\$ .25
---------------	--------	---------------	--------

## Hawk-Eye Developing Trays.

These trays are light in weight, tough and strong, and are not affected by the action of chemicals; are easily kept clean, have ridges on the bottom, and we recommend them for amateurs' use.

3¼ x 4¼ . . . . .	\$ .20	5 x 8 . . . . .	\$ .50
4 x 5 . . . . .	.25		

## Polished Rubber Trays.

The indentations permit the finger to be inserted freely under the plate without any danger of scratching.

4 x 5 . . . . .	\$ .35	6½ x 8½ . . . . .	\$ .85
5 x 8 . . . . .	.65	8 x 10 . . . . .	1.25

## Hard Rubber Developing Trays.

Of the best quality of hard rubber, with bound corners and a lip for pouring. They are a superior article.

4 x 5 . . . . .	\$ .55	8 x 10 . . . . .	\$ 1.25
5 x 8 . . . . .	.80	10 x 12 . . . . .	1.85
6½ x 8½ . . . . .	.95		

## Hawk-Eye Mounting Paste.

We furnish a paste especially prepared for mounting photographs that will not sour, discolor, mold, or separate. It will keep indefinitely.

½-pint jars . . . . .	\$ .25
-----------------------	--------

## Carrying Cases.

Made of black sole leather, including shoulder strap, and first-class in every way.

3½ x 3½ Weno Hawk-Eye . . . . .	\$ 1.25	No. 3 Spl Fldg. Weno Hawk-Eye	\$ 1.25
4 x 5 Weno Hawk-Eye . . . . .	1.50	No. 4 Folding Weno Hawk-Eye . . . . .	1.50
4 x 5 Hawk-Eye, Jr. . . . .	2.00	Stereo Weno Hawk-Eye . . . . .	1.50
3½ x 3½ Tourist Hawk-Eye . . . . .	1.25	No. 3 Focusing Weno Hawk-Eye	2.25
4 x 5 Tourist Hawk-Eye . . . . .	1.50	No. 4 Focusing Weno Hawk-Eye	2.50
No. 3 Folding Weno Hawk-Eye . . . . .	1.25		



## Azo.

An ideal amateur paper. Prints and develops quickly by artificial light.

$3\frac{1}{2} \times 3\frac{1}{2}$ ,	dozen \$ .15,	gross \$1.50	$5 \times 7$	dozen \$ .35,	gross \$3.50
$4 \times 5$ ,	" .25,	" 2.00	$5 \times 8$	" .40,	" 4.00

## Kloro Printing-Out Paper.

Brilliant high lights, silky half tones, rich, transparent shadows.

$3\frac{1}{2} \times 3\frac{1}{2}$ ,	2 dozen \$ .20,	gross \$1.15	$4 \times 5$	2 dozen \$ .25,	gross \$1.25
$3\frac{1}{4} \times 4\frac{1}{4}$ ,	2 " .20,	" 1.15	$5 \times 7$	1 " .30,	" 2.65

Quotations for other sizes on application.

## Blue Print Paper.

Quickly printed and easily handled. This paper possesses peculiar and characteristic properties found in no other brand.

$3\frac{1}{2} \times 3\frac{1}{2}$ ,	25 sheets per package \$ .16	$4 \times 5$ ,	25 sheets per package \$ .20
$3\frac{1}{4} \times 4\frac{1}{4}$ ,	25 " " " .16	$5 \times 7$ ,	25 " " " .35

## Glass Dry Plates.

Very rapid for instantaneous work.

$3\frac{1}{4} \times 3\frac{1}{4}$	. . . . . \$ .35	$4 \times 5$	. . . . . \$ .65
$3\frac{1}{2} \times 3\frac{1}{2}$	. . . . . .35	$5 \times 7$	. . . . . 1.10
$3\frac{3}{4} \times 4\frac{1}{4}$	. . . . . .35		

## Hub Developing Powders.

These powders are carefully compounded and those using them can feel assured of obtaining the best of results. We recommend them for the development of our film. Each package will make 4 ounces.

Price, per dozen	. . . . . \$ .50
------------------	------------------

## Toning Solution.

(Concentrated.)

12-ounce bottle	.	.	.	.	.	.	\$ .50
-----------------	---	---	---	---	---	---	--------

## Hardener.

12-ounce bottle	.	.	.	.	.	.	\$ .50
-----------------	---	---	---	---	---	---	--------

## Azo Developing Powders.

6 powders, sufficient for 24 ounces	.	.	.	.	\$ .25
12 " " " 48 "	.	.	.	.	50

Complete directions with each package.

## Hawk-Eye Print Roller.

Fitted with double rollers of the best rubber and very durable.

6-inch	.	.	.	.	.	.	.	\$ .50
--------	---	---	---	---	---	---	---	--------

## Hawk-Eye Albums.

These albums are the loose leaf, lace system, with plain gray leaves, and are of the latest design. The covers are of cloth in a delicate gray tint. These albums are intended for use as permanent books for preserving prints of interest.

No. 1, size of leaf, 5 x 6½ inches; capacity, 40, 4 x 5, 3¼ x 4¼, or 3½ x 3½ prints . . . . . \$1.00

No. 2, size of leaf, 9¼ x 6½ inches; capacity, 80, 4 x 5, 3¼ x 4¼, or	
3½ x 3½ prints	1.25



## Squeegees.

Of the best velvet rubber, for use with ferrotype plates.

6-inch	.	.	.	\$ .40	8-inch	.	.	.	\$ .50
--------	---	---	---	--------	--------	---	---	---	--------

## Ferrotype Plates.

Of the best quality that can be made, heavily coated, especially adapted for burnishing prints.

Size, 10 x 14 inches	.	.	.	.	.	.	\$ .15
----------------------	---	---	---	---	---	---	--------

## Card Mounts.

We do not carry a complete assortment of card stock, selecting only what we think most desirable for the amateur's use.

2 x 2½, embossed	.	.	.	per dozen, \$ .10,	per 100, \$ .45
3½ x 3½, "	.	.	.	" " .15,	" " .75
3¼ x 4¼, "	.	.	.	" " .15,	" " .75
4 x 5, "	.	.	.	" " .20,	" " 1.20
Stereo	.	.	.	" " .20,	" " 1.00

## Hub Magnesium Flashlight Powder.

This powder enables one to make exposures at night without the use of a flash lamp or other apparatus, and is supplied at a price within the reach of all. The method of using this powder is perfectly safe and the operator can join the group if desired. Packed in separate cartridges of one exposure each.

Package containing 7 cartridges	.	.	.	.	\$ .25
---------------------------------	---	---	---	---	--------

## Developing and Printing.

Size.	Developing, Printing, and Mounting— 12 Exposures.	Developing Only.	Printing and Mounting.	Developing, Printing, and Mounting.
2 x 2½	\$ .80	\$ .03	\$ .04	\$ .07
3½ x 3½	1.50	.06	.08	.12½
3¼ x 4¼	1.50	.06	.08	.12½
4 x 5	1.80	.08	.10	.15
5 x 7	2.40	.08	.12½	.20

## Outfits for Developing and Printing.

To save time and trouble in selecting the articles needed for developing and printing, we furnish outfits including everything necessary at far below the cost if purchased separately.

### 3½ x 3½ FOR FILM OR PLATES.

1 Candle Lamp . . . . .	\$ .25	¼ lb. Hyposulphite of Soda . . . . .	\$ .04
4 Developing Trays . . . . .	.40	1 dozen Sheets Printing Paper . . . . .	.15
1 Glass Beaker . . . . .	.12	1 Bottle Toning Solution . . . . .	.10
1 3½ x 3½ Printing Frame . . . . .	.25	1 Pkg. Bromide of Potassium . . . . .	.10
1 3½ x 3½ Glass . . . . .	.05	1 Bottle Glycerine . . . . .	.05
1 Stirring Rod . . . . .	.05	Directions . . . . .	.10
¼ dozen Developing Powders . . . . .	.15		
			<hr/> \$1.81

Price, complete . . . . . \$1.00

### 4 x 5 FOR FILM OR PLATES.

1 Candle Lamp . . . . .	\$ .25	½ lb. Hyposulphite of Soda . . . . .	\$ .07
1 4 x 5 Printing Frame . . . . .	.25	½ oz. Bromide Potassium . . . . .	.10
1 4 x 5 Glass . . . . .	.05	2 dozen 4 x 5 Printing Paper . . . . .	.25
1 Glass Beaker . . . . .	.12	2 ozs. Toning Solution . . . . .	.15
1 Stirring Rod . . . . .	.05	1 oz. Glycerine . . . . .	.05
4 4 x 5 Developing Trays . . . . .	.40	Directions . . . . .	.10
½ dozen Developing Powders . . . . .	.25		
			<hr/> \$2.09

Price, complete . . . . . \$1.50



## TERMS.



The prices as given are net except to dealers.

Remittance should be made by draft on New York, express order, postal order, or registered mail. Amounts less than one dollar may be remitted in stamps. We do not accept personal checks.

Parties unknown to us desiring shipment C. O. D. must remit one-third the estimated amount of invoice with the order.

Small parcels which do not contain glass in any form can be sent by mail at risk of the purchaser. We do not pay postage—remit when ordering.

All our goods are packed carefully, and we cannot be held responsible for any damage after a package leaves our hands.

No charge is made for packing, and prices are f. o. b., at Rochester.



BLAIR CAMERA COMPANY,  
ROCHESTER, N. Y.





# BLAIR CAMERA CO.

ROCHESTER, N. Y.

