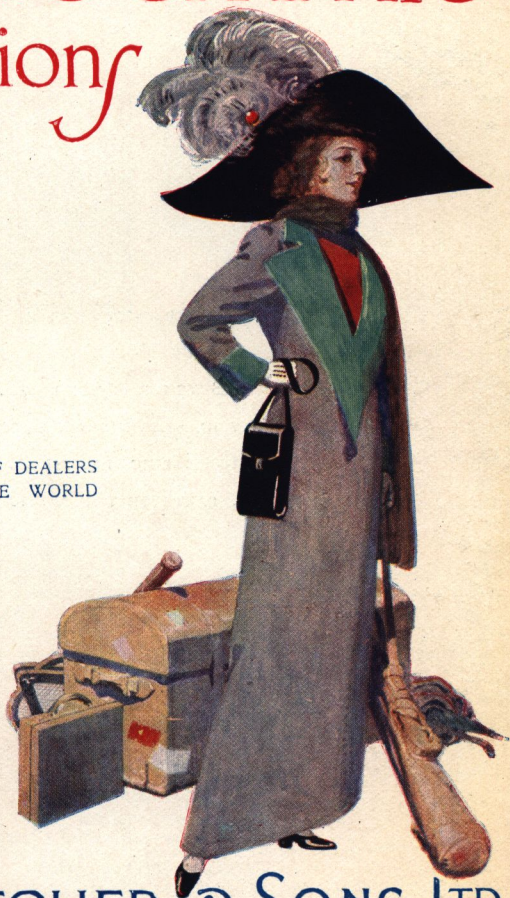


Butcher's PHOTOGRAPHIC Fashions

OBTAINABLE OF DEALERS
ALL OVER THE WORLD



W. BUTCHER & SONS LTD

CAMERA HOUSE, FARRINGDON AVENUE, LONDON, E.C.

THE PRODUCTIONS OF
THE HOUSE OF
W. BUTCHER & SONS LTD.
MAY BE OBTAINED THROUGH
PHOTOGRAPHIC DEALERS IN
ALL PARTS OF THE WORLD.

CLINCHERS and PILOTS.



The CLINCHER



The PILOT

¶ A series of magazine cameras eminently adapted to meet the requirements of the beginner. Simple in design and free from complication.

The bodies are made of well-seasoned wood covered in morocco leatherette and have solid leather carrying handles. The lens is a single achromatic with a set of revolving diaphragms. The shutter gives time and instantaneous exposures. The changing is most reliable. Two finders are provided, one for horizontal and one for vertical pictures.

¶ The Pilot Cameras are similar in every respect to the Clinchers, but have the additional advantages of revolving magnifiers for portraiture and a recorder fitted to the changing mechanism, showing the number of plates exposed.

The absence of complicated fittings and delicate pieces of mechanism is a feature that should appeal to all who require a camera of simple design at a reasonable price.

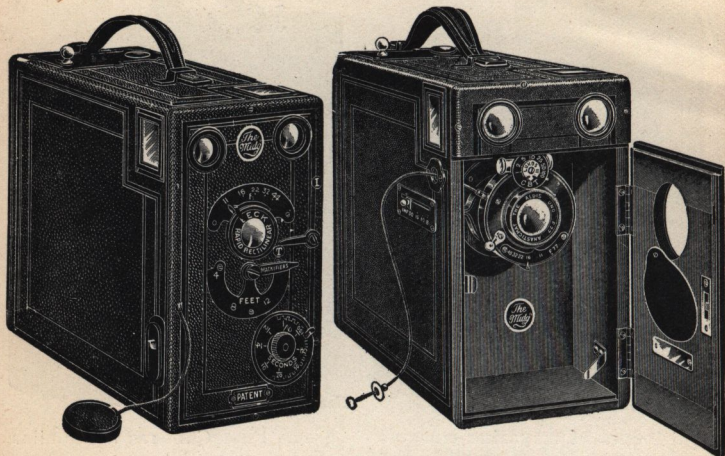
THE CLINCHER MODEL.

No.	Lens.	Specification.	Prices.
1	Single Achromatic	To take 6 plates $3\frac{1}{2} \times 2\frac{1}{2}$	5/6
2	" "	To take 6 plates $4\frac{1}{4} \times 3\frac{1}{4}$ ($\frac{1}{4}$ pl.)	7/6
3	" "	To take 12 plates $4\frac{1}{4} \times 3\frac{1}{4}$ ($\frac{1}{2}$ pl.)	10/6
4	Beck Rectilinear ..	To take 6 plates $3\frac{1}{2} \times 2\frac{1}{2}$	10/6

THE PILOT MODEL.

1	Single Achromatic	To take 6 plates $3\frac{1}{2} \times 2\frac{1}{2}$	7/6
2	" "	To take 6 plates $4\frac{1}{4} \times 3\frac{1}{4}$ ($\frac{1}{4}$ pl.)	10/6
3	" "	To take 12 plates $4\frac{1}{4} \times 3\frac{1}{4}$ ($\frac{1}{2}$ pl.)	12/6
4	Beck Rectilinear ..	To take 6 plates $3\frac{1}{2} \times 2\frac{1}{2}$	13/6

THE MIDG



Models 0 and 00.

¶ A very fine series of Magazine Cameras made of thoroughly well-seasoned wood, leatherette-covered and with the "Midg" patent auxiliary back door. Each camera takes 12 plates in patent sheaths, which record the number of the exposure on the edge of the plate, has two large brilliant view finders and is fitted with a Rapid Rectilinear lens and shutter with speed regulation.

No. 0 $\frac{1}{4}$ -pl. Rapid Rectilinear Lens. Magnifiers, Everset Shutter, speeds 1 to $\frac{1}{100}$ sec. .. **21/0**

No. 0 Post-card. Do., do. **35/0**

No. 00 $\frac{1}{4}$ -pl. Rapid Symmetrical Lens, Magnifiers, Everset Shutter, speeds 1 to $\frac{1}{100}$ sec. **25/-**

Models 1, 2 and 3.

¶ These patterns are made with an opening front door which protects the lens and shutter from dust and damage. It will be noticed that except in the Model 1., these cameras are fitted with the Aldis Uno Anastigmat, a very fine lens working at $f/7.7$. The shutters are self-contained, give a variety of speeds and are fitted with the patent Antinous release.

Midg cameras are sent out with clear concise instructions explaining the use of every fitting, etc.

No. 1 $\frac{1}{4}$ -pl. Opening front door. Symmetrical Lens, Lukos II. Shutter **35/0**

No. 1. Post-card Do., do. **47/6**

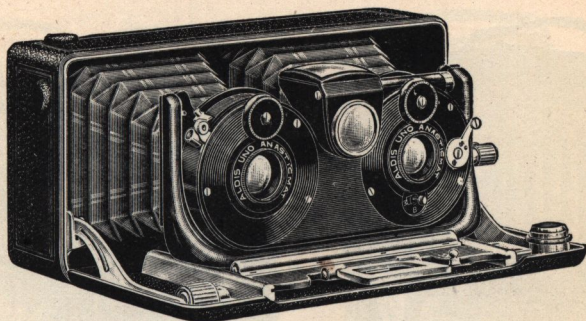
No. 2 $\frac{1}{4}$ -pl. Aldis Uno Anastigmat, $f/7.7$, Lukos Shutter, Antinous Release..... **45/0**

No. 2 Post-card. Do., do. **57/6**

No. 3 $\frac{1}{4}$ -pl. Aldis Uno Anastigmat, $f/7.7$, Lukos Sector Shutter, 1 to $\frac{1}{100}$ sec. **57/6**

No. 3 Post-card. Do., do. **70/0**

STEREO CAMEOS.



¶ Although taking stereoscopic plates, these cameras are not in any way bulky. The Stereo Cameos have long been famous for their small bulk, excellent design and smart appearance.

Every care is taken in the manufacture of these instruments, the lenses are carefully selected and accurately paired and the shutters work in unison, giving equal exposure to each half of the plate.

Particulars of Butcher's Stereoscopic Cameras are contained in their instruction booklet, "Stereoscopic Pictures and How to make them," free on application.

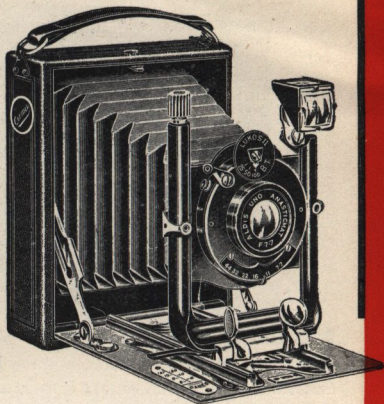
The **Stereolette**, a miniature stereoscopic camera taking pictures on plates $4\frac{1}{4} \times 1\frac{3}{4}$ ($45 \times 107^m/m$). All metal body, leather-covered, solid cast front, rack and pinion focussing.

No. 1.	Aldis "Uno" Anastigmats, f/7.7	£4 0 0
" 2.	" in Compound Sector Shutter	5 15 0
" 3.	Zeiss Tessars, f/6.3	12 15 0
" 4.	" f/4.5	13 15 0

The **Stereo Cameo Cameras** for the standard size plate, $6\frac{3}{4} \times 3\frac{1}{4}$.

No. 0.	With pair of Single achromatic lenses, everset shutter	£2 15 0
" 1.	With pair of Aldis "Uno" Anastigmats, f/7.7, and Antinous Release to shutter	4 4 0
" 2.	Leather-covered, rack and pinion focussing, Aldis "Uno" Anastigmat lenses f/7.7, Automatic Shutter, 1 to $\frac{1}{100}$ sec.	7 7 0

THE CAMEO.



MODELS 0, 00, 000 and 0000.

☞ A series of really serviceable and most practical cameras produced at low prices.

Made of well-seasoned wood, leatherette-covered with ebonized wood baseboard. The front is a solid U-shaped casting with rack and pinion rise and fall. Cross movement is also provided. The noticeable point about the front is its great strength and rigidity.

A large reversible brilliant finder is fitted and the focussing screen is provided with a deep hood.

No. 0 $\frac{1}{4}$ -pl. Single Achromatic lens, Everset shutter and 1 slide **21/0**

No. 00 $\frac{1}{4}$ -pl. Rapid Aplanat lens and Antinous release to shutter **25/0**

No. 000 $\frac{1}{4}$ -pl. Beck R.R. lens, Lukos II. shutter, speeds $\frac{1}{25}$, $\frac{1}{30}$ and $\frac{1}{100}$ sec., two slides.... **30/0**

No. 0000 $\frac{1}{4}$ -pl. Aldis Uno Anastigmat, f/7.7, Lukos speeded shutter **37/6**

MODEL I.

☞ This Cameo Camera embodies all the latest improvements in construction. The baseboard is of aluminium. The side struts are very solid and firmly fixed to the camera and baseboard, holding the whole rigidly in position.

The solid U front is fitted on a brass travelling carriage which has automatic locking arrangements and handy thumb-pieces for drawing out.

The shutter is the Lukos II., giving speeds $\frac{1}{25}$, $\frac{1}{30}$ and $\frac{1}{100}$ second, as well as Time and Bulb exposures. Antinous release is fitted.

C.D.V. ($3\frac{1}{2} \times 2\frac{1}{2}$), with two slides.

Beck R.R., f/11..... **£1 12 6**
Aldis Uno Anastigmat, f/7.7.. **2 0 0**
Beck Mutar, Series I., f/6.... **2 10 0**

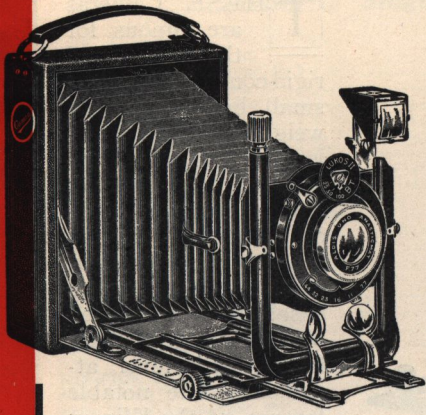
$\frac{1}{4}$ -plate ($4\frac{1}{4} \times 3\frac{1}{4}$), with two slides.

Beck R.R., f/11..... **£1 17 6**
Aldis Uno Anastigmat, f/7.7.. **2 7 6**
Beck Mutar, Series I., f/6.... **2 17 6**

Post-Card ($5\frac{1}{2} \times 3\frac{1}{2}$), with two slides.

Beck R.R., f/11..... **£2 15 0**
Aldis Uno Anastigmat, f/7.7.. **3 10 0**
Beck Mutar, Series I., f/6.... **4 2 6**

THE CAMEO.



MODEL II.

¶ This pattern has the advantage of a double extending baseboard and extra long bellows, so that the back half of the lens can be used. Focussing is by rack and pinion. When fully extended the front and baseboard are remarkably steady and free from any form of vibration.

The Beck Mutar lens supplied with this camera is a convertible three foci. The $\frac{1}{4}$ -plate can be used as a lens of either $4\frac{3}{4}$, $7\frac{1}{2}$ or $9\frac{3}{4}$ inches focus.

C.D.V. ($3\frac{1}{2} \times 3\frac{1}{2}$), with two slides.

Beck Symmetrical, f/8.....	£2 7 6
Aldis Uno Anastigmat, f/7.7..	2 12 6
Beck Mutar, Series II., f/6 ..	3 10 0

$\frac{1}{4}$ -plate ($4\frac{1}{4} \times 3\frac{1}{4}$), with two slides.

Beck Symmetrical, f/8.....	£2 15 0
Aldis Uno Anastigmat, f/7.7..	3 2 6
Beck Mutar, Series II., f/6 ..	4 5 0

Post-Card ($5\frac{1}{2} \times 3\frac{1}{2}$), with two slides.

Beck Symmetrical, f/8.....	£3 10 0
Aldis Uno Anastigmat, f/7.7..	4 0 0
Beck Mutar, Series II., f/6 ..	5 7 6

MODEL III.

¶ In this pattern is presented a camera of the smallest possible dimensions consistent with efficiency. The body and baseboard are made entirely of metal and rounded on all sides so that it fits the pocket comfortably. The covering is morocco leatherette.

The front is a solid cast aluminium U-shaped standard which is fitted to a large travelling carriage. It is most rigid and firm and provision is made for the usual rise, fall and cross movements.

The shutter is a Lukos II., gives speeds $\frac{1}{25}$, $\frac{1}{50}$ and $\frac{1}{100}$ second and is fitted with Antinous release.

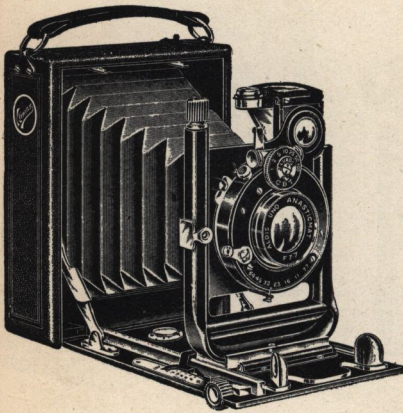
C.D.V. ($3\frac{1}{2} \times 3\frac{1}{2}$), with two slides.

With Aldis Uno Anastigmat,	
f/7.7	£2 5 0

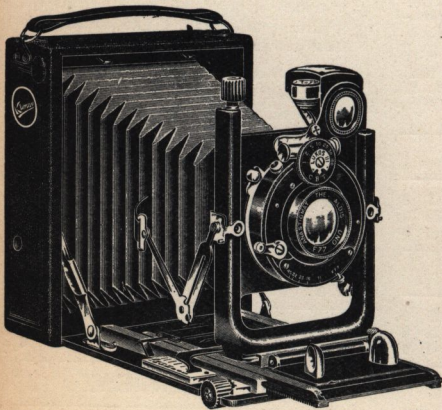
$\frac{1}{4}$ -plate ($4\frac{1}{4} \times 3\frac{1}{4}$), with two slides.

With Aldis Uno Anastigmat,	
f/7.7	£2 15 0

THE KLIMAX.



Model I.



Model II.

THESE Cameras are famous for their solid and rigid construction, their small bulk and light weight, and the excellence of the workmanship and materials used. The cameras are made of mahogany covered in morocco leather, have a folding metal baseboard, enamelled black and large brilliant finder, with level attached. The notable feature of the Klimax Camera is the solid U front mounted on a hinged travelling base, which makes this the most rigid pattern on the market and the most easy to operate. In addition to the usual rising and falling movements to the front operated by rack and pinion there is a swing back, which can be swung to any angle. The shutter is a Lukos Sector, giving speeds 1 to $\frac{1}{100}$ th sec. and having an antinuous release. Focussing is by rack and pinion. Two single metal slides and hooded focussing screen are supplied with each camera.

PRICES OF KLIMAX CAMERAS.

Model I. Single Extending.

	Lukos Sector Shutter.	Compound Sector Shutter.
Quarter-Plate, $4\frac{1}{2} \times 3\frac{1}{2}$ in.		
Aldis "Uno" Anastigmat, f/7.7	£3 15 0	£4 10 0
Beck Mutar Anastigmat, f/6	4 8 0	5 5 0
Aldis Anastigmat II., No. 2, f/6	4 15 0	5 15 0
Cooke Series III., f/6.5	7 5 0	8 0 0
Ross Homo III., f/6.3	7 5 0	8 0 0
Dallmeyer Stigmatic, II., No. 2, f/6	9 0 0	10 0 0
Goerz Dagor, III., No. 0, f/6.8	8 10 0	9 5 0
Zeiss Tessar, II.b, No. 4, f/6.3	8 0 0	8 15 0

Post-Card, $5\frac{1}{2} \times 3\frac{1}{2}$ in. and 5×4 inches.		
Aldis "Uno" Anastigmat, f/6	4 15 0	5 15 0
Beck Mutar Anastigmat, f/6	5 7 6	6 7 6
Aldis Anastigmat, II., No. 2a, f/6.3	6 2 6	7 2 6
Cooke Series III., f/6.5	8 12 6	9 12 6
Ross Homo III., No. 3, f/6.3	8 12 6	9 12 6
Dallmeyer Stigmatic, II., No. 3, f/6	10 17 6	12 0 0
Goerz Dagor, III., No. 1, f/6.8	10 7 6	11 7 6
Zeiss Tessar, II.b, No. 5, f/6.3	9 7 6	10 7 6

Half-Plate, $6\frac{1}{2} \times 4\frac{1}{2}$ in.		
Aldis "Uno" Anastigmat, f/7.7	5 15 0	6 17 6
Beck Mutar Anastigmat, f/6	—	7 17 6
Aldis Anastigmat, II., No. 3, f/6	—	9 5 0
Cooke Series III., f/6.5	—	11 15 0
Ross Homo, III., No. 4, f/6.3	—	11 15 0
Dallmeyer Stigmatic, II., No. 4, f/6	—	14 10 0
Goerz Dagor, III., No. 2, f/6.8	—	13 10 0
Zeiss Tessar, II.b, No. 5a, f/6.3	—	13 12 6

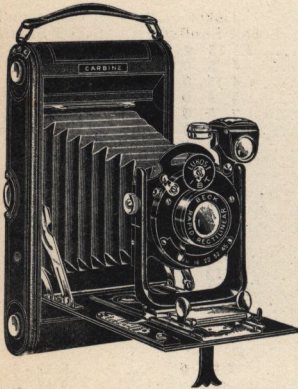
Model II. Double Extending.

	Lukos Sector Shutter.	Compound Sector Shutter.
Quarter-Plate, $4\frac{1}{2} \times 3\frac{1}{2}$ in.		
Aldis "Uno" Anastigmat, f/7.7	£4 7 6	£5 2 6
Beck Mutar Anastigmat, 3 foci, f/6	5 10 0	6 10 0
Aldis Anastigmat, II., No. 2, f/6.3	5 7 6	6 7 6
Cooke Series III., f/6.5	7 17 6	8 12 6
Ross Homo, III., No. 1, f/6.3	7 17 6	8 12 6
Dallmeyer Stigmatic, II., No. 2, f/6	9 12 6	10 12 6
Goerz Dagor, III., No. 0, f/6.8	9 2 6	9 17 6
Zeiss Amatar, I.x, f/6.8	9 2 6	9 17 6

Post-Card, $5\frac{1}{2} \times 3\frac{1}{2}$ in. and 5×4 inches.		
Aldis "Uno" Anastigmat, f/7.7	5 7 6	6 7 6
Beck Mutar Anastigmat, 3 foci, f/6	6 17 6	7 17 6
Aldis Anastigmat, II., No. 2a, f/6.3	6 15 0	7 15 0
Cooke Series III., f/6.5	9 5 0	10 5 0
Ross Homo, III., No. 3, f/6.3	9 5 0	10 5 0
Dallmeyer Stigmatic, II., f/6	11 10 0	12 12 6
Goerz Dagor, III., No. 1, f/6.8	11 0 0	12 0 0
Zeiss Amatar, I.x, f/6.8	11 5 0	12 5 0

Half-Plate, $6\frac{1}{2} \times 4\frac{1}{2}$ in.		
Aldis "Uno" Anastigmat, f/7.7	6 7	7 10 0
Beck Mutar Anastigmat, 3 foci, f/6	—	9 5 0
Aldis Anastigmat, II., No. 3, f/6	—	9 17 6
Cooke Series III., f/6.5	—	12 7 6
Ross Homo, III., No. 4, f/6.3	—	12 7 6
Dallmeyer Stigmatic, II., No. 4, f/6	—	15 2 6
Goerz Dagor, III., No. 2, f/6.8	—	14 2 6
Zeiss Amatar, I.x, f/6.8	—	14 10 0

THE CARBINE



MODELS 2 and 3a.

Well made, smartly covered and perfectly equipped, the "Carbine" Cameras offer value which cannot be equalled. Notable features of the "Carbine" design are the cast U front—the most rigid front made, the extra long baseboard, the perfect film-winding arrangements and the arrangements for the use of plates in dark slides. The lenses fitted are the best consistent with the price and the shutters are of the most reliable type.

Model 2 with Beck Rapid Rectilinear, $f/11$, and Lukos Everset Shutter.

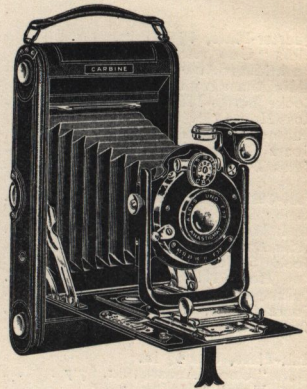
$3\frac{1}{2} \times 2\frac{1}{2}$	£2 7 6
$\frac{1}{4}$ -plate	2 10 0
Post-card	3 5 0

Model 3a, with Beck Symmetrical Lens and Lukos II. Shutter, $\frac{1}{25}$, $\frac{1}{50}$ and $\frac{1}{100}$ sec.

$3\frac{1}{2} \times 2\frac{1}{2}$	2 12 6
$\frac{1}{4}$ -plate	2 15 0
Post-card	3 10 0

Model 3a, with Aldis Uno Anastigmat, $f/7.7$.

$3\frac{1}{2} \times 2\frac{1}{2}$	2 17 6
$\frac{1}{4}$ -plate	3 2 6
Post-card	4 2 6



MODEL 3b.

A perfect combination of camera, lens and shutter. A critical examination of this model reveals the care exercised in its design. Everything is of the best quality, and the smooth and easy way in which the various parts work is a proof that only first-class workmen are employed in its manufacture.

$3\frac{1}{2} \times 2\frac{1}{2}$.

Aldis Uno Anastigmat, $f/7.7$ £3 3 0

Beck Mutar Anastigmat, $f/6$ 3 12 6

Goerz Dagor, $f/6.3$ 7 17 6

Zeiss Tessar, $f/6.3$ 7 7 6

$\frac{1}{4}$ -plate.

Aldis Uno Anastigmat, $f/7.7$ 3 7 6

Beck Mutar, $f/6$ 3 17 6

Ross Homo, $f/6.3$ 6 17 6

Zeiss Tessar, $f/6.3$ 7 12 6

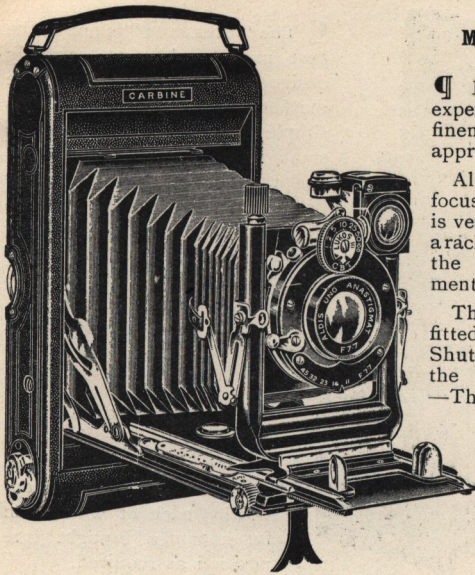
Post-card.

Aldis Uno Anastigmat, $f/7.7$ 4 7 6

Beck Mutar, $f/6$ 5 0 0

Zeiss Tessar, $f/6.3$ 8 15 0

THE CARBINE.



MODELS 4, 4a and 5.

In these cameras the expert will find all those refinements which he so much appreciates.

All are rack and pinion focussing and the front which is very substantially built has a rack and pinion for adjusting the rise and falling movement.

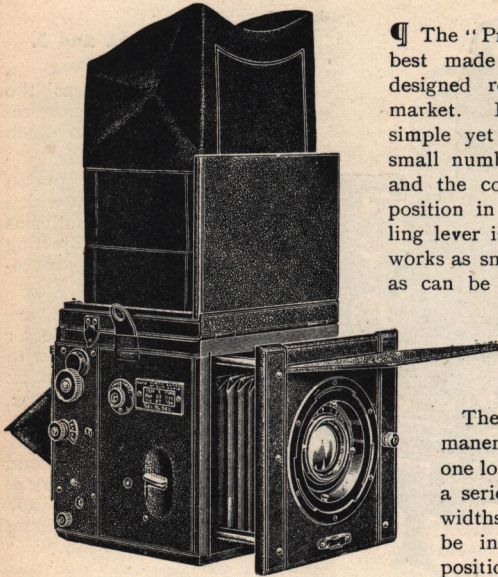
The Nos. 4a and 5 are fitted with the Lukos Sector Shutter. The No. 4 with the Lukos II. Automatic — The film is held in loose, rigid spool boxes.

The cameras are made of mahogany and covered in real morocco leather, and can be used with plates without alteration.

No.	Lens.	$\frac{1}{4}$ plate.	Post-card.
4	Aldis "Uno" Anastigmat, f/7.7 ...	£3 12 6	£4 12 6
	Beck Mutar I., f/6	4 2 6	5 5 0
	Ross Homo., Series III., f/6.3	7 2 6	8 10 0
	Dallmeyer Stigmatic, Series II., f/6	8 17 6	10 15 0
	Zeiss Tessar IIb., f/6.3	7 17 6	9 0 0
	Voigtländer Collinear, f/6.8	8 2 6	10 0 0
4a	Aldis "Uno" Anastigmat	4 0 0	5 0 0
	Beck Mutar, Series I., f/6	4 10 0	5 12 6
	Ross Homocentric	7 10 0	8 17 6
	Zeiss Tessar IIb., f/6.3	8 5 0	9 7 6
5	Aldis "Uno" Anastigmat, f/7.7 ..	4 12 6	5 15 0
	Beck Mutar II., 3 foci, f/6	5 15 0	7 5 0
	Aldis Series II., f/6	5 12 6	7 2 6
	Cooke Series III., f/6.5	8 2 6	9 12 6
	Ross Homo., f/6.3	8 2 6	9 12 6
	Zeiss Amatar IX, f/6.8	9 7 6	11 7 6
	Voigtländer Collinear, f/6.8	9 2 6	11 2 6

Almost any other makers' lenses can be fitted if desired.

THE "PRESSMAN."



¶ The "Pressman" is one of the best made and most carefully designed reflex cameras on the market. Its great point is its simple yet efficient design, the small number of working parts, and the convenient and handy position in which every controlling lever is placed. Everything works as smoothly and as sweetly as can be desired. When the shutter is released, the mirror rises without noise and vibration.

The shutter, of the permanent slit type, is really one long blind consisting of a series of slits of different widths, each of which can be instantly brought into position as required.

A variety of speeds can be obtained, from $1/25$ th to $1/1000$ th sec.

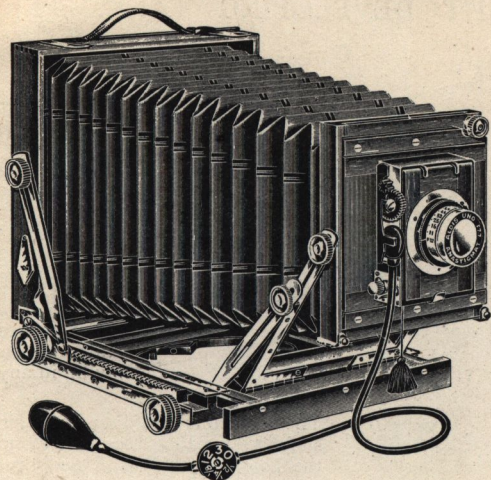
The front is fitted with a sky shade and is most rigid. When extended it is supported on four struts, into each of which are let racks controlled by one pinion head for focussing.

Other features of note are the revolving back and mask under the focussing screen, the sunk lens box, and the rack-rising movement to the front.

PRICES. $3\frac{1}{2} \times 2\frac{1}{2}$ and $\frac{1}{4}$ -plate Camera and 6 Single Metal Slides.
 5×4 and $\frac{1}{2}$ -plate Camera and 3 Double Dark Slides.

	$3\frac{1}{2} \times 2\frac{1}{2}$	$\frac{1}{4}$ -plate	5×4	$\frac{1}{2}$ -plate.
Camera and Slides only ..	£9 9 0	£9 9 0	£13 13 0	£19 19 0
Aldis Uno Anastigmat, f/7.7	10 10 0	10 14 0	—	—
Cooke Lens, Series II., f/4.5	15 6 0	15 15 0	21 5 0	—
Zeiss Tessar, f/6.3	14 6 0	14 10 0	20 15 0	31 10 0
Goerz Celor, f/4.5	15 0 0	16 0 0	21 5 0	33 10 0
Goerz Dagor, f/6.8	13 16 0	15 15 0	21 0 0	30 10 0
Voigtländer Heliar, f/4.5 ..	15 10 0	15 15 0	21 15 0	34 0 0

THE NATIONAL.



These outfits comprise a well-finished mahogany camera, double dark slide, lens, shutter and tripod.

The camera has every up-to-date movement, including universal swing front rack and pinion wide-angle movement, etc.

The front is built extra large and the bellows almost square, so that when the extreme rise of the front is used, there is little possibility of a cut-off.

MODEL 4a. Double-Extension.	$\frac{1}{4}$ -plate	$\frac{1}{2}$ -plate	$\frac{1}{1}$ -plate
With Aldis Uno Anastigmat, f/7.7 ..	£2 17 6	£3 10 0	£6 0 0
Primus Rapid Rectilinear, f/8	2 5 0	3 0 0	4 12 6
Beck Rapid Symmetrical, f/8	2 10 0	3 5 0	5 0 0
„ Mutar Anastigmat, Series II. f/6	4 2 6	5 7 6	—
Dallmeyer Stigmatic IV., f/6.3	5 0 0	6 15 0	—
Cooke Anastigmat III., f/6.5	6 2 6	8 5 0	14 10 0
Goerz Dagor III., f/6.8	7 5 0	10 0 0	14 10 0

MODEL 4. Triple-Extension.	$\frac{1}{2}$ -plate	$\frac{1}{1}$ -plate
Aldis "Uno" Anastigmat, f/7.7	£4 0 0	£6 17 6
"Primus" R.R. Lens.....	3 10 0	5 10 0
Beck Symmetrical, f/8	3 15 0	5 17 6
Beck Mutar, Series II., f/6	5 17 6	8 10 0
Goerz Anastigmat, III., f/6.8.....	10 10 0	15 7 6

MODEL 5. Brass-Bound.	$\frac{1}{2}$ -plate	$\frac{1}{1}$ -plate
Aldis "Uno" Anastigmat, f/7.7	£5 0 0	£8 2 6
"Primus" Rapid Rectilinear Lens.....	4 10 0	6 15 0
Beck Symmetrical, f/8	4 15 0	7 2 6
Beck Mutar, Series II., f/6.....	6 17 6	—
Goerz Anastigmat, Series III., f/6.8	11 10 0	16 12 6

THE KLIMAX

DAYLIGHT DEVELOPING TANK.



Beautifully made in nickel-plated brass and constructed to hold six plates, which can be developed, fixed and washed without removal from the tank or exposure to the light.

The Klimax tank is acknowledged the best developing machine on the market, and is distinguished by the following features:

1. It is constructed in two parts, the plate rack forming part of the lid.
2. The plate rack has a locking device which holds the plates securely in position and prevents them falling out or moving in any way.
3. The solutions are introduced in such a way that they rise from the bottom of the tank and thus prevent bubbles forming, etc.
4. The tank is reversible, and has tap at bottom for removing liquids.

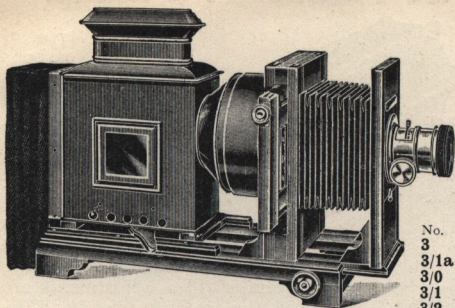
Write for free Booklet on the Klimax tank.

To take 6 plates.	Prices
Miniature Selfix, $2\frac{5}{16} \times 1\frac{3}{4}$	7/6
Stereolette, $4\frac{1}{4} \times 1\frac{3}{4}$ (45×107 m/m)	8/6
$3\frac{1}{2} \times 2\frac{1}{2}$	8/6
Quarter-plate	8/6
Post-card, $5\frac{1}{2} \times 3\frac{1}{2}$	10/6
5×4	10/6
Half-plate	13/6
Stereoscopic, $6\frac{3}{4} \times 3\frac{1}{4}$	12/6
Continental sizes— 6×9 c/m	8/6
" " 9×12	8/6
" " 6×13	10/0
" " 10×15	12/6
" " 13×18	15/0

The CAMEO. A cheaper form of tank, made of white metal, with loose plate rack and perfectly light-trapped outlet and inlet valve. Reversible.

Price, to take 6 $\frac{1}{4}$ -plates 5/0

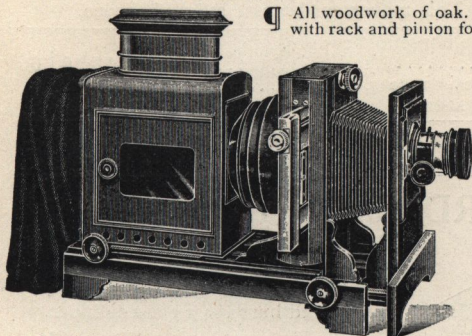
The CORONET Enlarger.



☞ Made of mahogany, well polished, with large Russian iron body, with light-proof back curtain. There is a lever for adjusting the lantern body, and a rack and pinion for focussing. The carrier has rising and falling movements, operated by rack and pinion, and is reversible. Slotted plates hold the negative in position.

No.	Con.	Size.	Without Objective.	With Objective.
3	5½ in.	½ plate	£2 10 0	£3 0 0
3/1a	6¼ "	9 × 12 cm.	3 0 0	3 15 0
3/0	6½ "	5 × 4	3 5 0	4 5 0
3/1	6½ "	Post-card	3 5 0	4 5 0
3/2	8½ "	½ plate	4 10 0	5 15 0

The ABBEYDALE Enlarger.

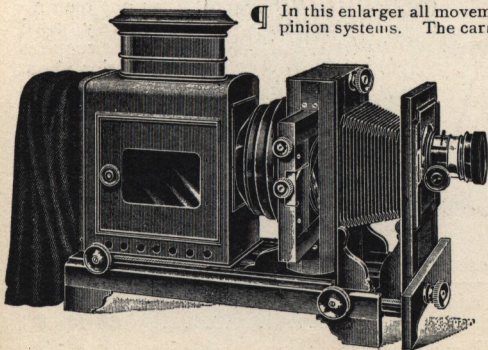


☞ All woodwork of oak. Extra large light-tight body, with rack and pinion for adjusting, with triple extending condenser cones, and rack and pinion focussing movement. The carrier stage can be swung by means of a fine adjustment screw. The negative carrier has rising and falling movements operated by a rack and pinion.

No.	Con.	Size.	Without Objective	With Objective
6/1	5½ in.	½ plate ..	£3 12 6	
6/2a	6¼ "	9 × 12 cm.	4 2 6	
6/0	6½ "	5 × 4 ..	4 7 6	
6/2	6½ "	Post-card	4 7 6	
6/3	8½ "	½ plate ..	6 0 0	

No.	Con.	Size.	With Objective
6/1	5½ in.	½ plate ..	£4 7 6
6/2a	6¼ "	9 × 12 cm.	4 17 6
6/0	6½ "	5 × 4 ..	5 7 6
6/2	6½ "	Post-card	5 7 6
6/3	8½ "	½ plate ..	7 5 0

The RECORD Enlarger.



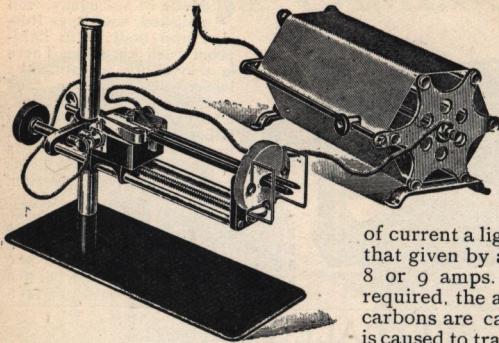
☞ In this enlarger all movements are operated by rack and pinion systems. The carrier stage can be swung either way. The carrier has rising, falling and rotating movements. All the woodwork is made of walnut, and in addition to the usual rack and pinion for focussing, there is a fine adjustment to the lens board for very fine focussing.

No.	Con.	Size.	Without Objective
7/1	5½ in.	½ plate ..	£4 15 0
7/2a	6¼ "	9 × 12 cm.	5 5 0
7/0	6½ "	5 × 4 ..	5 15 0
7/2	6½ "	Post-card	5 15 0
7/3	8½ "	½ plate ..	7 15 0

No.	Con.	Size.	With Objective
7/1	5½ in.	½ plate ..	£5 15 0
7/2a	6¼ "	9 × 12 cm.	6 5 0
7/0	6½ "	5 × 4 ..	7 0 0
7/2	6½ "	Post-card	7 0 0
7/3	8½ "	½ plate ..	9 10 0

Booklet "Picture Making by Enlarging," free on application.

The KLIMAX Parallel Arc Lamp.



¶ In this type of lamp the carbons are placed horizontal and parallel, so that they point direct into the condenser. This system possesses many distinct advantages. With only four ampères

of current a light is obtained equal to that given by a vertical lamp taking 8 or 9 amps. No adjustments are required, the arc burns steady. The carbons are carried in a chair, which is caused to travel forward by a milled

head operating a screw. This movement keeps the light in focus.

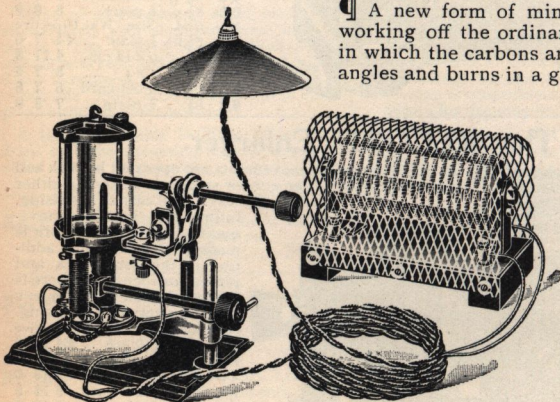
Model I. Works off the household supply.

Prices, lamp only	£2 10 0
Lamp, with 100 volt resistance	3 0 0
Lamp, with 200 volt resistance	3 10 0

Model II. Heavy patterns, carries up to 18 amps.

Lamp only	£3 10 0
-----------------	---------

The RECORD Enclosed Arc Lamp.



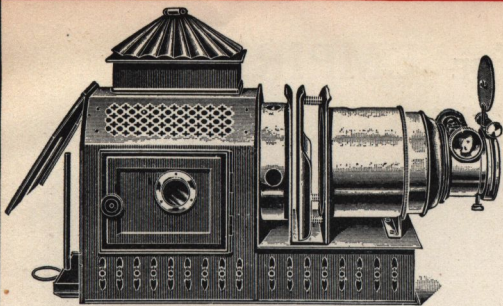
¶ A new form of miniature arc lamp, working off the ordinary house current, in which the carbons are placed at right angles and burns in a glass cylinder.

Excellent results are obtained and the arc burns steady and only requires attention about every 20 minutes.

The current consumption is very low, the lamp taking about 4.5 ampères. The

outfit comprises lamp resistance and 6 feet of flex and plug.

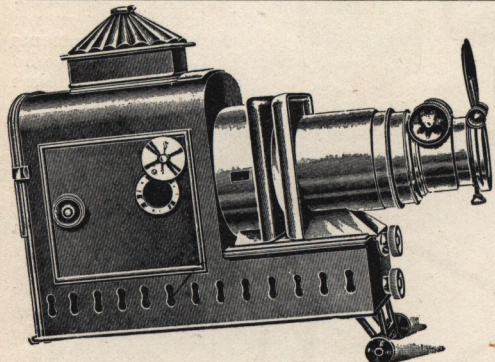
Price, with resistance and 2 yards of spare flexible wire 200 and 250 volt.....	£2 10 0
For 100 volt continuous.....	2 13 6
For 100 volt alternating, with special choking coil	3 5 0



The COMET.

¶ A very compact lantern made of Russian iron. The front and stage is of solid brass, the draw-tubes being accurately fitted, and perfectly rigid at full extension. The condenser sleeve is pierced with holes to correspond with those in the condenser giving perfect ventilation. The lens is a superior quality achromatic and the condenser a plano-convex; the outfit is complete in carrying case.

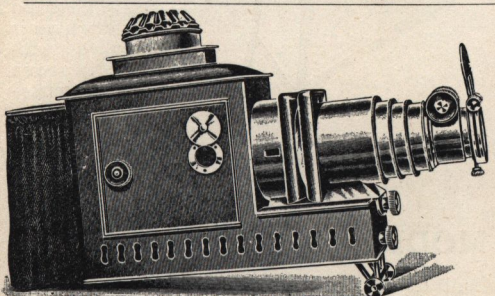
		Prices.	With 4" condenser.	With 4½" condenser and 2" diam. lens.
No. 9e	Fitted with Cowl and Tray	£2	2	0
" 9	" " 3-wick lamp	2	5	0
" 9a	" " 4-wick lamp	2	6	6
" 9d	" " Incandescent burner, upright ..	2	8	6
" 9sl	" " No. 0 Meta spirit lamp.....	2	10	0
No. 40	£2	17	6
" 40a	3	0	6
" 40b	3	2	0
" 40sl	3	6	0



The HARLAND.

¶ Very large Russian iron body with double extending brass draw-tubes and adjustable carrier stage, patent tilting movement giving a graduated use of 2½ inch. The condenser is the Empire patent and the lens is of the interchangeable tube form.

No. 12b	Fitted cowl and tray only	£4	15	0
" 12	Fitted 4-wick best quality lamp ..	5	8	6
" 12c	Fitted Stocks' pattern lamp....	5	12	0
" 12a	Fitted No. 1 "Primus" injector jet	6	0	0



The IRON DUKE.

¶ Stout Russian iron with very large lamp house and extra heavy and rigid brass draw-tubes. Perfectly ventilated and with curtain fitted at back. Every fitting about this lantern is of the finest quality. The carrier stage can be adjusted to any width, and the tilting arrangement gives very fine adjustment. The lens is of the interchangeable cylinder form. The condenser is the "Empire" patent compensating. The carrying case is of Russian iron.

Single Extension. Plano-Convex Condenser.		Triple Extension. Meniscus Condenser.		
No. 14b	With cowl and tray only ..	£5	0	0
" 14	" Stocks' pattern lamp	5	17	0
" 14a	" No. 1 "Primus" injector jet.....	6	5	0
No. 15b	With cowl and tray only ..	£6	0	0
" 15	" Stocks' pattern lamp	6	17	0
" 15a	" No. 1 "Primus" injector jet.....	7	5	0

THE EMPIRE CINEMATOGRAPHS

For the Home or use in Schools, etc.

MODEL 0.

Maltese Cross Movement.

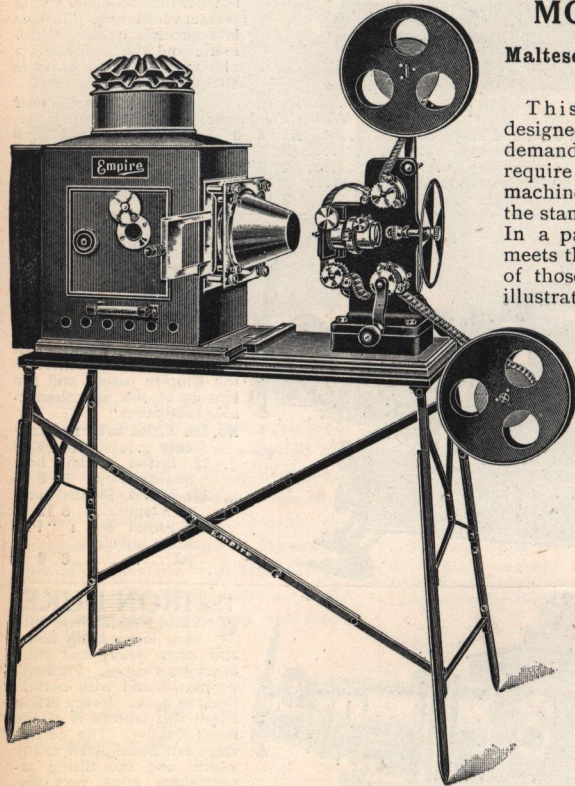
This machine is designed to meet the demands of those who require an inexpensive machine that will take the standard size films. In a particular way it meets the requirements of those lecturers who illustrate their subject with an occasional living picture. It projects both films and lantern slides.

It projects a clear and steady picture that is remarkably free from flicker. The spools hold 650 feet of films and the machine is supplied with both lantern and cinematograph lenses.

£7 15 0.

Stand as illustrated, extra

£2 5 0.



MODEL No. 00.

A cheaper machine built on the "dog" principle. It is not quite so heavily built as the No. 0, but at the same time is a really satisfactory machine. The spools hold 350 feet of film.

Price, complete with lantern and cinematograph lenses in travelling case, **£5 15 0.**

BUTCHERS' LIBRARY

OF FREE INSTRUCTION BOOKS



THE Specifications and Prices in these pages are of necessity very condensed. Any of the following booklets will be sent free to those interested. They fully explain our productions.

"THE PLEASURES OF PHOTOGRAPHY "

By F. J. MORTIMER, F.R.P.S.

Editor *The Amateur Photographer and Photographic News.*

"PHOTOGRAPHY AND SPORT "

By F. J. MORTIMER, F.R.P.S.

"POCKET-MONEY AND THE CAMERA "

By F. J. MORTIMER, F.R.P.S.

"PHOTOGRAPHY WITH A CAMEO "

By F. J. MORTIMER, F.R.P.S.

"PHOTOGRAPHY WITH A KLIMAX "

By F. J. MORTIMER, F.R.P.S.

"PHOTOGRAPHY WITH A CARBINE "

By F. J. MORTIMER, F.R.P.S.

"PICTURE MAKING BY ENLARGING "

By ALEC. J. JONES.

"OPTICAL LANTERNS AND HOW TO USE THEM "

By ALEC. J. JONES.

"STEREOSCOPIC PICTURES AND HOW TO MAKE THEM "

By ALEC. J. JONES.

"THE EMPIRE HOME CINEMATOGRAPH AND HOW TO USE IT "

By F. W. BAKER.



CAMERA WORKS—BLACKHEATH, S.E.
 MOUNT FACTORY—KING'S CROSS, N.
 CINEMATOGRAPH AND FILM STUDIO—LEE, KENT.

TELEGRAMS—"ENGLAND, FLEET, LONDON."
 CABLES—"ENGLAND, LONDON."
 CODE—A B C 5th Edition.
 TELEPHONE—5995 HOLBORN (4 Lines).