

C. P. GOERZ,

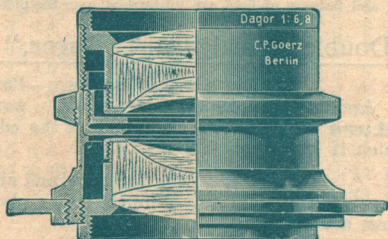
OPTICAL WORKS,

Nos. 1 to 6 Holborn Circus, London,

E.C.

Telegrams :

"PHOTOPSIA,
LONDON."



Telephone :

1696
HOLBORN.

Goerz Double Anastigmats

are unquestionably the best Photographic Lenses, and have been pronounced by authorities the very acme of perfection.

The Goerz Lenses are unrivalled for their **Perfect Corrections**, freedom from **Astigmatism**,

Flatness of Field,
Exquisite Definition, and
Extreme Covering Power.

The different Series (see following pages) provide for every requirement of the Photographer.

For Hand Camera work the lenses of shorter focus can be supplied fitted with the Goerz Sector Shutter (see page 328) or other Between-Lens Shutters.

The "Dagor," F/6.8 and F/7.7 will be found sufficiently rapid for instantaneous and other photography, and having greater covering power than either the "Celor" or "Syntor," can be used as a wide-angle lens on a plate larger than that it is listed to cover. It can therefore be recommended as the best universal lens either for the professional or amateur. The "Celor" and "Syntor" at open aperture cover the plates for which they are listed, and the rapidity of the former renders it the lens *par excellence* for extremely rapid hand camera exposures, or for studio use. The definition given by the "Syntor" is not inferior; to those desiring a high-class Anastigmat at a moderate cost, it is to be recommended.

Goerz Double Anastigmat

“DAGOR.” Series III.

F 6·8 up to No. 6. Higher Numbers F 7·7.

The finest Universal Lens is highly suitable for Portraits, Groups, Instantaneous Work, and Architecture. The “Dagor” permits the use of the largest stop without diminishing the sharpness of the image at the extreme margins of the plate up to an angle of 70°. By the use of a smaller stop an angle of 90° is covered. Definition, brilliancy, and flatness of field are uniform all over the picture.

Each Goerz Double Anastigmat, “Dagor,” supplies:—

1. **A RAPID LENS** for general purposes—Portraiture, Landscape, Architecture, Enlargements, etc., working at **full aperture** with extreme sharpness to the edges of the plate for which it is constructed.
2. **A WIDE ANGLE LENS** for Interiors and all views at short distances sharply covering a much larger plate when smaller apertures are employed.
3. **A LONG FOCUS LENS** for distant objects, when the back combination alone is used.

No.	Equivalent Focus	Size of Plate sharply covered at			Code Word.	Price with Iris Diaphragm.			Price in Special Focussing Mounts.*		
		F: 6·8	F: 15·5	F: 62		£	s.	d.	£	s.	d.
0000	1 $\frac{5}{8}$	1 $\frac{5}{8}$ × 1 $\frac{5}{8}$	2 × 2	2 × 2 $\frac{3}{4}$	Capo	4	15	0	—	—	—
000	2 $\frac{3}{8}$	2 $\frac{3}{8}$ × 2 $\frac{3}{8}$	2 $\frac{1}{2}$ × 3	2 $\frac{3}{4}$ × 3 $\frac{1}{2}$	Cardiff	4	15	0	—	—	—
00	3 $\frac{1}{2}$	3 $\frac{1}{4}$ × 3 $\frac{1}{4}$	3 $\frac{1}{4}$ × 4 $\frac{1}{4}$	4 × 5	Cadiz	5	0	0	5	15	0
0	5	3 $\frac{1}{2}$ × 4 $\frac{1}{4}$	4 × 5	4 $\frac{3}{4}$ × 6 $\frac{1}{2}$	Cæsar	5	5	0	6	0	0
1	6	4 × 5	4 $\frac{3}{4}$ × 6 $\frac{1}{2}$	5 × 8	Calderon	6	5	0	7	5	0
2	7	4 $\frac{1}{2}$ × 6 $\frac{1}{2}$	5 × 8	7 × 9	Calla	7	5	0	8	5	0
3	8 $\frac{1}{4}$	5 × 8	6 $\frac{1}{2}$ × 8 $\frac{1}{2}$	8 × 10	Calvin	8	15	0	9	15	0
4	9 $\frac{1}{2}$	6 $\frac{1}{2}$ × 8 $\frac{1}{2}$	7 × 9	10 × 12	Camerun	10	10	0	11	15	0
5	10 $\frac{3}{4}$	7 × 9	8 × 10	12 × 15	Camillus	12	15	0	—	—	—
6	12	8 × 10	10 × 12	16 × 18	Canada	15	5	0	—	—	—
7	14	10 × 12	12 × 15	18 × 22	Capet	19	15	0	—	—	—
7a	16 $\frac{1}{2}$	11 × 14	13 × 17	21 × 25	Caviar	26	0	0	—	—	—
8	19	12 × 15	16 × 18	22 × 25	Carlos	31	0	0	—	—	—
9	24	16 × 18	18 × 22	24 × 30	Census	46	0	0	—	—	—
10	30	18 × 22	22 × 25	28 × 36	City	76	5	0	—	—	—
11	35	22 × 25	24 × 30	34 × 44	Columbia	151	5	0	—	—	—

*If ordered by Telegram add “focussing” to code word.

For stereoscopic views the lenses are accurately paired at an extra charge of 8/.

C. P. GOERZ, 1 to 6 Holborn Circus, London, E.C.

Goerz Double Anastigmat. "Celor." Ser. I B. F/4.5 to 5.5.

No.	Equivalent Focus.	Plate Covered		Code Word.	Price with Iris Diaphragm.	Price in Special Focussing Mount.*
		at full aperture.	with smaller stops.			
000	$2\frac{3}{8}$	$2\frac{1}{4} \times 1\frac{1}{2}$	$2\frac{3}{4} \times 2$	Baal	£ s. d. 4 15 0	£ s. d. 5 10 0
00	$3\frac{1}{2}$	$3\frac{1}{2} \times 2\frac{1}{2}$	$4 \times 2\frac{3}{4}$	Babel	5 5 0	6 0 0
0	5	$4\frac{1}{4} \times 3\frac{1}{4}$	5×4	Bacca	5 10 0	6 5 0
1	6	5×4	$6\frac{1}{2} \times 4\frac{3}{4}$	Babuin	6 10 0	7 5 0
2	7	$6\frac{1}{2} \times 4\frac{3}{4}$	$8 \times 5\frac{1}{2}$	Bacchus	7 10 0	8 5 0
3	$8\frac{1}{4}$	7×5	$8\frac{1}{2} \times 6\frac{1}{2}$	Baco	9 5 0	10 5 0
4	$9\frac{1}{2}$	$8 \times 5\frac{1}{2}$	9×7	Bairam	12 10 0	13 10 0
5	$10\frac{3}{4}$	$8\frac{1}{2} \times 6\frac{1}{2}$	10×8	Bagdad	15 0 0	—
6	12	9×7	12×10	Bagger	17 10 0	—
7	14	10×8	14×11	Bagno	22 10 0	—
7a	$16\frac{1}{2}$	12×10	16×14	Bacillus	28 15 0	—
8	19	15×12	20×16	Bakul	33 15 0	—

This Series of Lenses is specially adapted for instantaneous work of any kind, and for the Shortest exposures ($\frac{1}{1000}$ th of a second or less), Portraiture in the Studio or ordinary room, Lantern and Cinematograph Projection, Enlargements, Reproductions, Three-Colour Work Telephotography, as well as for Landscapes and Architecture, and in all cases where an extremely wide angle is not required.

The apertures of the different lenses are as follows—No. 000, F/4.5; No. 00 to No. 4, F/4.8; No. 5, F/5; No. 6 to No. 8, F/5.5.

The **BACK COMBINATION** can be used with a small stop, and has about double the focus of the complete lens.

For Stereoscopic work the Lenses can be accurately paired at an extra charge of 8/-.

Goerz "Syntor" Double Anastigmat. F/6.8.

The "Syntor" F/6.8 is well corrected for chromatic and spherical aberration, and for astigmatism. The angle covered at F/6.8 is 64°; by the use of smaller stops this angle can be increased to 70°. A plate having a base line equal to the focal length of the "Syntor" used is excellently covered. Where a considerable displacement of the lens from the centre is desired the next longer focus is recommended.

The **Back Combination** when used with a small stop, becomes a serviceable single lens of about double the focus of the complete lens.

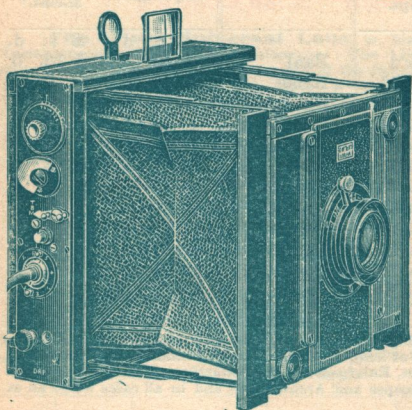
The Goerz "Syntor" F/6.8 will be seen, therefore, to have all the properties expected in a modern anastigmat, although less in price than some of the old type of rectilinear lenses.

No.	Eq. Focus Inches.	For Plates Inches.	Price in ordinary mount.	Code Word.	Price in Special Focussing mount.*
			£ s. d.		£ s. d.
0	5	$4\frac{1}{4} \times 3\frac{1}{4}$	3 5 0	Syntax	4 0 0
1	6	5×4	3 15 0	Synram	4 10 0
2	7	$6\frac{1}{2} \times 4\frac{3}{4}$	4 10 0	Syrius	5 5 0
3	$8\frac{1}{4}$	7×5	6 5 0	Sydow	7 0 0

* If ordering by telegram add "focussing" to code word.

C. P. GOERZ, 1 to 6 Holborn Circus, London, E.C.

GOERZ - ANSCHUTZ FOLDING CAMERA.



Slit altered, and all speeds adjusted from the outside.

The latest model of the Goerz-Anschutz Folding Camera is fitted with an improved form of **focal plane shutter**, giving speeds from $1/12000$ second to 5 seconds, all regulated from the outside.

The **shutter is self-capping**, so that the plate or film is not exposed during setting—a point of some importance when roll films are used. **Exposures can be altered before or after shutter is set.**

The camera can be fitted with Telephoto Lens and extension for use of Single Combination of Lens.

Special Model for the Tropics.

Price List.

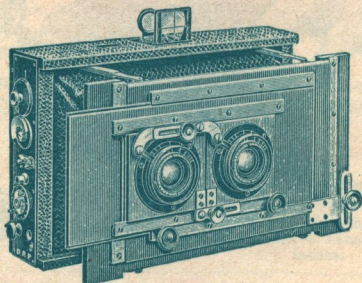
	$4\frac{1}{2} \times 3\frac{1}{2}$	5×4	$5\frac{1}{2} \times 3\frac{1}{2}$	$6\frac{1}{2} \times 4\frac{3}{4}$
Goerz-Anschutz Folding Camera, complete with Goerz "Celor" Lens F/4.8, 3 Double Dark Slides and Case ..	£ s. d. 13 19 0	£ s. d. 14 19 0	£ s. d. 15 14 0	£ s. d. 18 2 0
Do., do., with Goerz "Dagor" F/6.8, do.	13 14 0	14 19 0	15 14 0	18 2 0
Do., do., with Goerz "Syntor" F/6.8, do.	11 14 0	12 4 0	12 19 0	15 2 0
Double Dark Slides, each ..	0 12 0	0 12 0	0 14 0	0 16 0
Plate Changing Box for 12 Plates ..	1 10 0	1 10 0	1 15 0	1 18 0
Roll Holder ..	1 10 0	1 10 0	1 15 0	2 0 0
Film Pack Adapter ..	1 0 0	1 0 0	1 3 0	1 5 0

Complete List on Application.

C. P. GOERZ, 1 to 6 Holborn Circus, London, E.C.

GOERZ - ANSCHUTZ

STEREOSCOPIC CAMERA.



For Plates, Film
Packs, or Daylight
Loading Roll Films.

Camera adjusted for
Panoramic Pictures.

The stereoscopic model of the Goerz-Anschutz Folding Camera retains all the popular features of the latter camera, and has all the adjustments essential to an instrument being used for stereoscopic work.

The **separation of the lenses is variable**, so that the relief in the picture can be controlled, the division is removable, and the camera is adapted for panoramic or panel work.

Apart from its utility for rapid exposures, a **Focal Plane Shutter** as fitted to the Goerz-Anschutz Camera has **no small advantages for stereoscopic work**. The extra efficiency of this type of shutter enables the worker to use his lens at stops small enough to give required depth of focus, and yet to **make instantaneous exposures**. Moreover, both lenses receive exactly the same exposure.

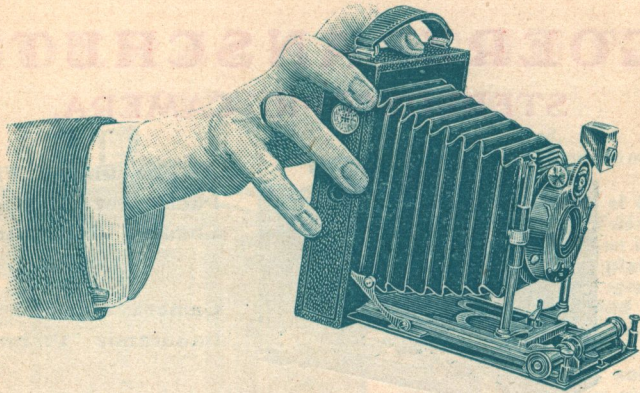
Price List.

Size of Plates.	$5\frac{1}{2} \times 3\frac{1}{2}$	$6\frac{3}{4} \times 3\frac{1}{2}$
Goerz-Anschutz Folding Camera with Goerz "Dagor" Lens F/6.3, 3 slides and Case	£ 21 17 0	£ 22 16 0
Extra Double Dark Slides, each	0 14 0	0 16 0
Plate Changing Box for 12 Plates	1 15 0	1 18 0
Roll Holder	1 15 0	2 0 0
Film Pack Adapter	1 3 0	—

Complete Catalogue on Application.

SPECIAL MODEL FOR TROPICS.

C. P. GOERZ, 1 to 6 Holborn Circus, London, E.C.



The Goerz "Tenax."

The Small, Practical Camera. No larger than the hand!

The Goerz "Tenax" is a new folding hand camera in which compactness has been especially studied, with the result that the size of the instrument has been brought to the irreducible minimum. Elegant in appearance and beautifully made, portability has been obtained without a sacrifice of efficiency. A smaller camera for the same sizes of plates cannot be made if the advantages of the "Tenax" are to be retained. The camera is fitted with a Goerz Lens, either the "Dagor" or "Syntor" series, and is provided with a special compound shutter giving exposures from 1 second to 1/250th of a second as well as time and bulb exposures. The double extension is sufficient to enable objects within a few feet of the camera to be focussed. A diagonal rack and pinion is provided for focussing, and the finder closes up in the camera. Fitting for tripod both ways. All these advantages are obtained in a camera no more than $1\frac{1}{4}$ inch in thickness in 5×4 size.

AUTOMATICALLY FOCUSED FOR INFINITY.

One press of a push button and the "Tenax" is ready for use.

Prices of "Tenax" Cameras and Accessories.

	$4\frac{1}{4} \times 3\frac{1}{4}$		5×4		Postcard, $5\frac{1}{2} \times 3\frac{1}{2}$ and 10×15 cm.	
	£	s. d.	£	s. d.	£	s. d.
Camera with Compound Shutter fitted with Goerz "Syntor" ..	8	0 0	9	0 0	9	10 0
Camera with Compound Shutter fitted with Goerz "Dagor" ..	10	0 0	11	0 0	12	0 0
Film Pack Adapter	0	8 0	0	10 0	0	10 0
Single Slides	0	1 6	0	2 0	0	3 0
Leather Case, holding camera and film pack adapter, or camera and three or six slides	0	7 6	0	7 6	0	7 6

C. P. GOERZ, 1 to 6 Holborn Circus, London, E.C.

Goerz Telephoto Lenses.

These lenses are of an entirely new construction, and have a definition and covering power unequalled by any other telephoto lens.

The Telephoto Lens is of the greatest service for photographing subjects inaccessible to the camera with its usual lens. The landscape worker, architectural photographer, and those interested in portraiture and natural history photography will find countless opportunities for the use of a telephoto attachment.

The telephoto attachment consists (A) of a positive lens, the one in ordinary use with the camera, (B) of the negative lens and tube.

Goerz Tele-Negative Lenses.

Prices without tubes.

No.	Focus of the Tele-Negative. inches.	Recommended for Combination with a Positive Lens of Focus. inches.	Tele-Negative in Aluminium Mount. PRICE.
1	$1\frac{3}{16}$	2 $\frac{1}{2}$ — 4 $\frac{1}{2}$	£ s. d. 1 10 0
2	$1\frac{1}{2}$	3 $\frac{1}{2}$ — 4 $\frac{1}{2}$	1 15 0
3	2 $\frac{1}{2}$	4 $\frac{1}{2}$ — 7	2 5 0
4	3	6 — 9 $\frac{1}{2}$	3 0 0
5	3 $\frac{1}{2}$	7 — 10 $\frac{1}{2}$	3 15 0
6	4 $\frac{1}{2}$	10 $\frac{1}{2}$ — 14	5 10 0
7	6	16 $\frac{1}{2}$ — 24	7 10 0

The Tubes for these Tele-Lenses are made of aluminium in two forms.

A.—Tubes for Hand Cameras.

These tubes are intended for cameras of a fixed bellows extension, similar to the Goerz-Anschutz Folding Camera, and, as in addition to long-distance telephotography, they are useful also for portraiture and copying, make the camera as efficient as a stand camera. The prices of these tubes range from £1 5s. to £4, according to diameter of negative and positive lenses in use.

With cameras having an extension equal to the infinity focus of the positive, a magnification of 3 to 3 $\frac{3}{4}$ diameters is obtained, and with the double extension the magnification is increased up to 6 $\frac{1}{2}$ diameters.

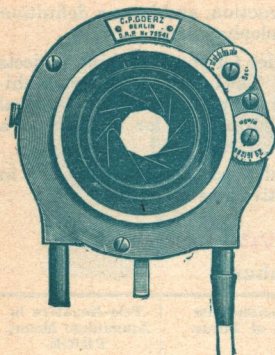
B.—Tubes for Bellows Cameras.

With these tubes the distance between negative and positive lenses is altered by a rack and pinion. Magnifications from 3 to 8 diameters can be made, and the amplifications are engraved upon the tube. Prices of tubes vary from £2 5s. to £6 10s.; for a half-plate camera, price would be £2 15s. to £3 5s.

Further information is obtainable in catalogue post free. A treatise on telephotography will be forwarded on receipt of 6d. in stamps.

C. P. GOERZ, 1 to 6 Holborn Circus, London, E.C.

The Goerz Sector Shutter.



Best and Most Reliable of Between-Lens Shutters.

Gives accurate automatic exposures from $\frac{1}{2}$ to $\frac{1}{150}$ th of a second. Time exposures of any duration can be given.

The shutter is simple in working, all moving parts are completely covered in and are consequently not susceptible to concussion, dust or moisture.

The shutter serves as a diaphragm and can be adjusted to any desired aperture.

The lenses of most makers can be fitted to it.

PRICES:

Small model, suited for any lens, the aperture of which does not exceed 24 mm. = 1 inch £3 10 0

Large model, for lenses with largest stop up to 32 mm. = $1\frac{1}{4}$ inch 4 10 0

Cost of fitting, 6/- to 15/- each, according to size.

The Shutter being fitted between the lenses it is necessary that it should be well-centred with them. We cannot guarantee faultless mounting unless the lens, whether of our make or any other, is sent to us for fitting.

Goerz Photo-Stereo-Binocular.

Camera for Single and Stereoscopic Views and Field Glass Combined.

Goerz Hypergon Double Anastigmat. F/22.

An extreme wide-angle lens, having an angle of 135° .

The diameter of the field of view, or in other words, the diagonal of the plate covered by the Hypergon Lens equals five times the focus, and the longer side of the plate equals four times the focus. See catalogue.

Goerz Double Anastigmat. Series IV. F/11.

A RAPID LENS for Process Work and Reproductions. See Catalogue.

Goerz Double Anastigmat. Series IVb. F/11.

"ALETHAR."

A Special Lens for Three-Colour Work and Reproductions. See Catalogue.

Complete Catalogue free on application to

C. P. GOERZ, 1 to 6 Holborn Circus,
LONDON, E.C.