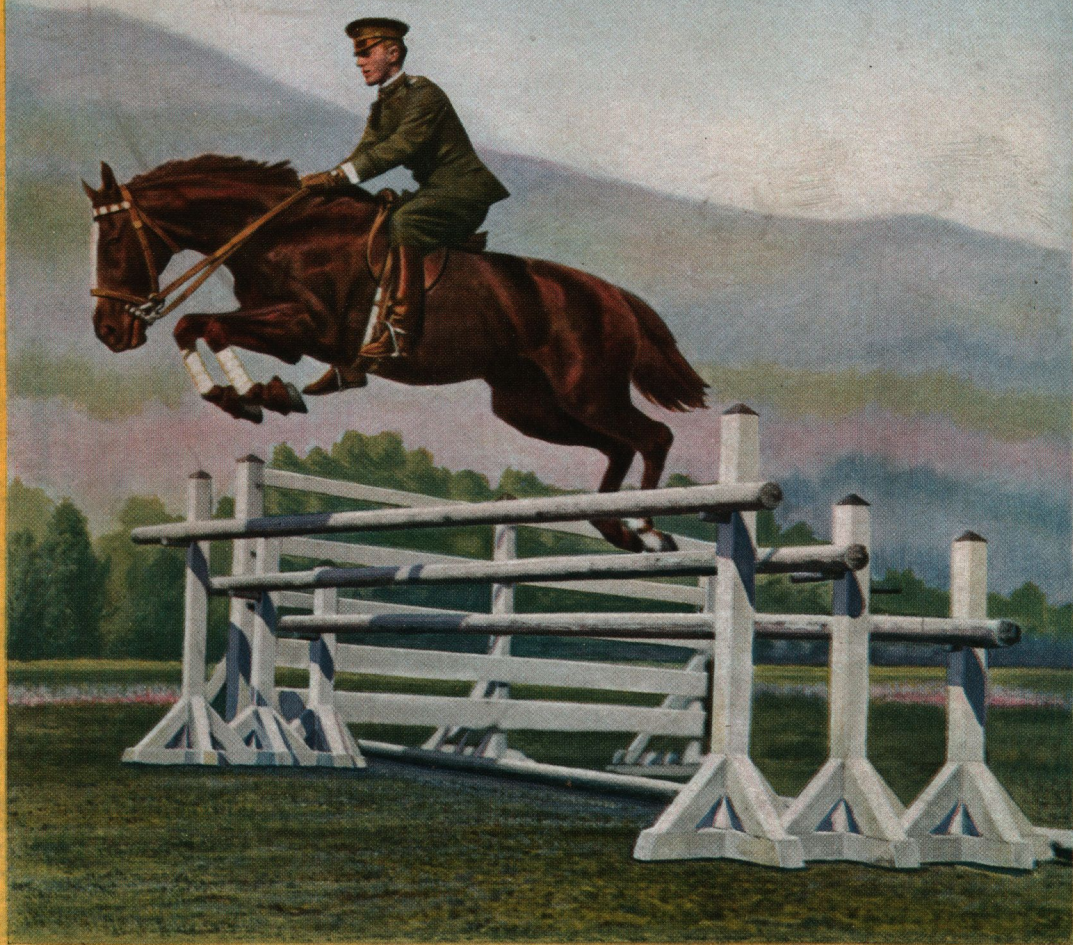


# GRAFLEX CAMERAS

1918





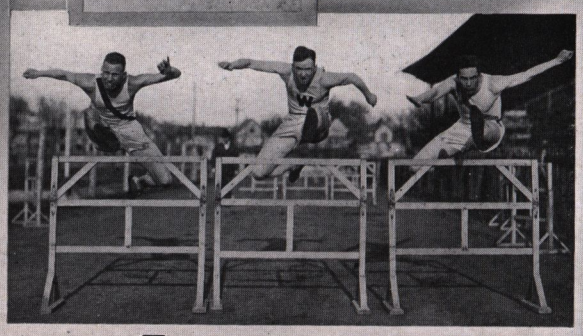
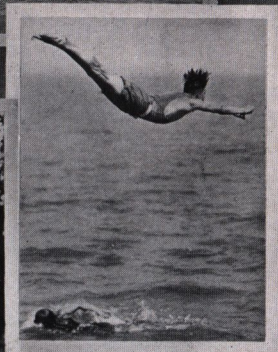
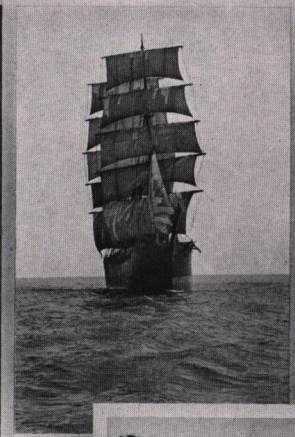
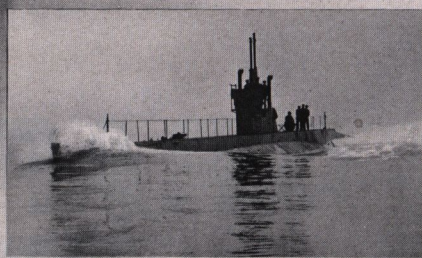
1910 Graflex

# GRAFLEX AND GRAPHIC CAMERAS 1918



FOLMER & SCHWING DEPARTMENT  
EASTMAN KODAK COMPANY  
ROCHESTER · N · Y ·









# THE GRAFLEX



THE practical advantages of Graflex construction awakens new interest in picture making because of its adaptability to an almost unlimited variety of subjects, and the elimination of many causes of non-success with other types of cameras. The user of a Graflex soon learns to appreciate the wide possibilities attending its use, and the certainty with which the required photographic result can be secured.

The most desired pictures are those which must frequently be made under adverse conditions of lighting—during the early or late hours when the sun is low; in the soft light of cloudy or rainy days; portraits in the shade, or within the home, and clear, distinct pictures of the children playing, or sharp records of subjects moving with great rapidity.

With the Graflex, fully exposed negatives of these interesting and unusual subjects may be made with surprising ease and accuracy of focus and composition.

The user of a Graflex finds it unnecessary to either estimate or measure the distance between the camera and his subject; nor is he obliged to go through the awkward process of focusing on the ground glass under the focusing cloth.

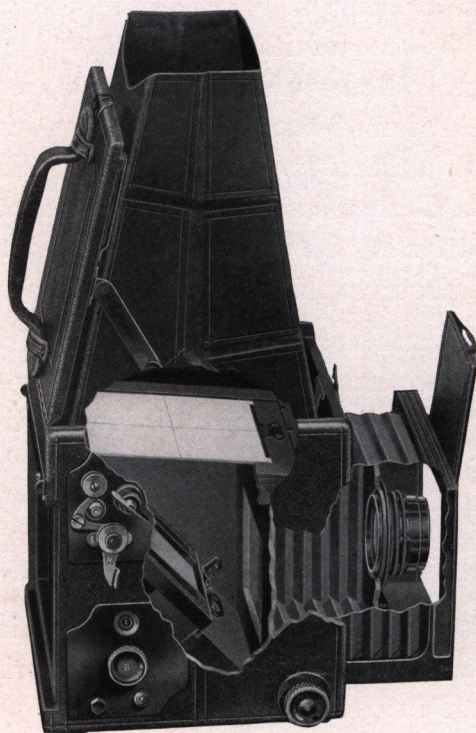
The Graflex, employing well known optical principles in a new way, completely eliminates uncertainty of focus. The Graflex shows the image right side up, the size it will appear in the negative up to the instant of exposure. This is accomplished by placing an optically perfect mirror in the body of the camera, at such an angle that the image







projected by the lens is reflected from the mirror to a fine ground glass screen in the top of the camera (see illustration). The operator, looking into the focusing hood, sees the picture right side up, exactly as it will be reproduced



Sectional Illustration, showing  
Graflex Principle

in the finished print. The distance between the subject and the camera is immaterial, as a slight turn of the focusing button instantly adjusts the focus as the subject approaches or recedes from the camera. This feature is of inestimable value to those who have been dependent upon the image as shown in the finder on account of the finder image being so small that com-

position and arrangement of the subject are next to impossible. Another feature that adds great uncertainty to the results obtained with cameras fitted with finders is the fact that no matter how badly out of focus the subject may be on the plate or film, the image in the finder is always sharp. This necessitates the use of a focusing scale, compelling the operator to estimate the distance between the camera and the subject. With the Graflex there is no guess work. A glance in the focusing hood shows in-



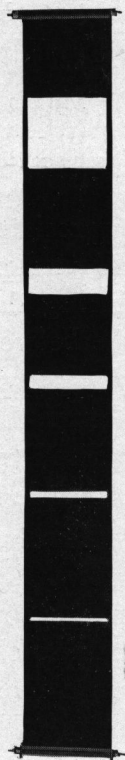




stantly whether, or not, the subject is in focus. The Graflex operator knows to a certainty that, with proper exposure, the finished print will be an exact reproduction of the image as seen on the focusing screen.

No less important than the reflecting principle is the fact that the Graflex Focal Plane Shutter, built into, and a part of every Graflex Camera, affords the highest illumination and uniformity of exposure. While the Graflex Focal Plane Shutter is so well known and extensively used that an extended description is unnecessary, there are still a few photographers who associate the term "Focal Plane" with exposures of extremely short duration,—overlooking the fact that the same optical principles that enable a shutter to secure a fully-timed negative in  $\frac{1}{1000}$  of a second, will also permit the making of perfect negatives under light conditions that with shutters of the usual type would result in badly underexposed negatives. For all kinds of photography indoors and out there is no shutter as efficient as the one supplied with the Graflex.

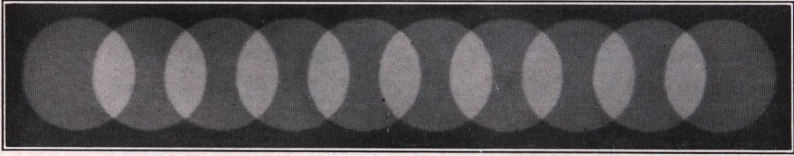
The Graflex Focal Plane Shutter consists of a long curtain with a number of fixed apertures, varying from full size of negative to an eighth of an inch in width. These openings being fixed insure at all times an absolutely uniform rectangular aperture. This curtain operates as closely as possible to the surface of the plate or film when in position for exposure, the duration of exposure being regulated by the size of the curtain aperture employed, and the rapidity with which it moves across the focal plane. The great advantage that a focal plane shutter has over those of the usual type will be instantly



Graflex Shutter  
Curtain







The illustrations above are reproduced from actual photographs made at the Kodak Research Laboratory of the light projected by a lens through a Graflex Focal Plane Shutter, and a between-lens shutter. The upper illustration shows that there is no diminishing of the volume of light due to the opening and closing of the shutter. With the Graflex Focal Plane Shutter the lens works at its full efficiency during the entire period of exposure. The lower cut shows how a between-lens shutter, when making short exposures, uses up most of the exposure period in opening and closing, allowing the lens to work at its full efficiency during but a small fraction of the exposure.

This is why the Graflex Focal Plane Shutter allows more light to reach the plate or film during the interval of exposure than any other shutter.

appreciated when it is considered that the Focal Plane Shutter permits the lens to work at its entire efficiency during the whole period of exposure. With shutters of the between lens type the lens is working at its full diaphragm opening during only a small fraction of the exposure, the remaining portion of the exposure period being utilized by the opening and closing of the shutter. The principle is shown in the two illustrations given above.

The shutter in every Graflex Camera is actuated to give automatic exposures from  $\frac{1}{10}$  to  $\frac{1}{1000}$  of a second, except in the Press Graflex where a speed of  $\frac{1}{1500}$  of a second may be obtained, and the Home Portrait Graflex, which has a maximum shutter speed of  $\frac{1}{800}$  of a second. A metal table shows instantly the speeds obtained with the different tensions on the curtain spring and various curtain apertures.



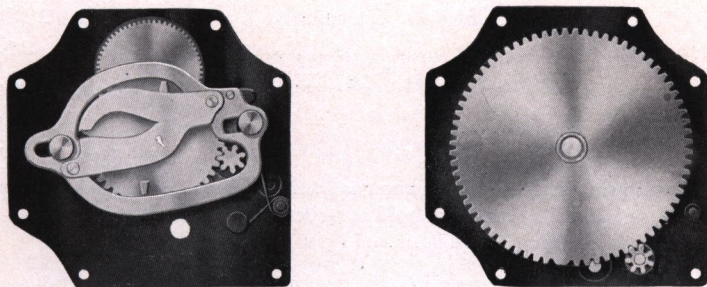




The operation of the Graflex is simple in the extreme. Focusing is done with a large milled head conveniently located at the right of the camera. Exposure is made by pressure on the lever at the left of the camera. This lever allows the mirror to swing up out of the cone of light, the mirror in turn tripping the shutter. As the mirror seats against an air cushion formed in the top of the camera, all vibration is effectually prevented. Another exclusive Graflex feature is the safety device which prevents the re-winding of the curtain when the mirror is up, thus preventing the fogging of the plate or film.

Every part of every Graflex is made and adjusted with the utmost precision and every Graflex is subjected to a rigid inspection and test before being placed on the market, insuring to the purchaser the greatest possible camera value.

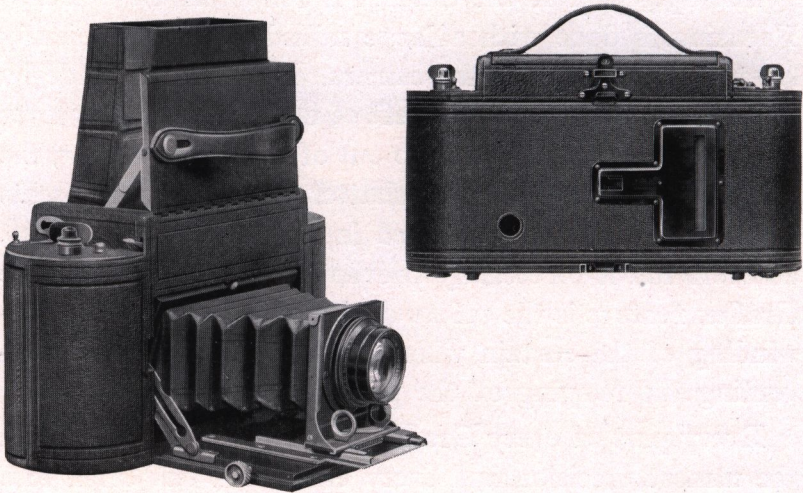
The rich appearance of the Graflex is fully in keeping with its mechanical excellence. The Graflex is constructed of mahogany covered with the finest grade of Persian Morocco leather, which harmonizes perfectly with the rich appearance given by the oxidized metal work and ebonized finish of all visible wood parts. Although it is rarely necessary to use a tripod with the Graflex, tripod plates are provided, permitting the use of a tripod for prolonged time exposures.



Auto Graflex Shutter Control Mechanism







## THE 1A GRAFLEX

*Autographic*

### SPECIFICATIONS

Outside dimensions, closed,  $9\frac{1}{2} \times 3 \times 5\frac{1}{4}$ ; focal capacity,  $6\frac{1}{2}$  in.; weight,  $3\frac{3}{4}$  lbs.; size of lens board,  $2\frac{1}{4} \times 2\frac{3}{8}$  in.; minimum focus of lenses accommodated,  $4\frac{3}{4}$  in. For Film only.

### THE PRICE

	$2\frac{1}{2} \times 4\frac{1}{4}$
1A Graflex without lens . . . . .	\$ 68.00
With Kodak Anastigmat Lens, <i>f</i> .4.5, No. 31 . . . . .	103.00
With B. & L. Kodak Anastigmat Lens, <i>f</i> .6.3, No. 2 . . . . .	91.50
With B. & L. Tessar Lens, Series Ic, <i>f</i> .4.5, No. 14 . . . . .	109.00
Leather Case for 1A Graflex . . . . .	6.50
Extra lens boards, each . . . . .	.40

To insure proper fitting we recommend that cameras be purchased complete with lenses as listed. We will not hold ourselves responsible for results with any of our cameras when lenses are not fitted by us.

Wide Angle Lenses cannot be used with Graflex Cameras.







## THE 1A GRAFLEX

Folmer's Patent, February 5, 1907, and April 21, 1908

**D**ESIGNED to meet the requirements of the tourist, or those who require a high grade reflecting camera, in compact form, embodying the advantages of film convenience and the effective Graflex principle, the 1A Graflex has become a popular model.

This camera takes the regular 1A Kodak Film of 6 or 12 exposures, and makes pictures of very pleasing proportions— $2\frac{1}{2} \times 4\frac{1}{4}$  inches. The Autographic feature, fitted to the camera back, enables the operator to write directly upon the Autographic Film, the date or other memorandum of every exposure at the time it is made, providing for the positive identification of any negative, at any time. This permanent record of the exact date, or title, upon the negative, is frequently of value aside from the satisfaction of knowing the facts relative to every negative when an occasion arises for their use.

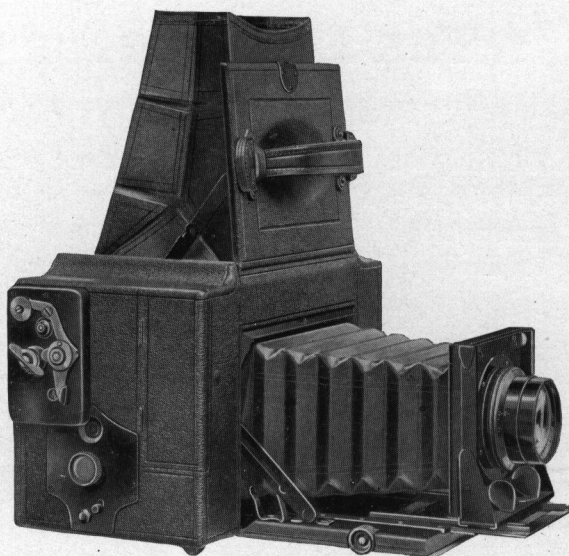
In order to make the camera as compact as possible, the Focusing Screen of the 1A Graflex is made a trifle narrower than the full width of the negative; this does not interfere in the slightest degree with accurate focusing.

As in the other Graflex models, this camera is equipped with the Focal Plane Shutter, affording variations in exposures from "time" to  $\frac{1}{1000}$  of a second. The shutter is fitted with a safety device which prevents the winding of the curtain when the mirror is up; this insures the setting of the mirror, and prevents fogging of the film.

The focusing hood folds compactly in the top of the camera, and when extended is held rigidly in position. The rack is milled from heavy brass, a stop being adjusted at a point indicating the "universal focus" of the lens, permitting the use of the camera for general fixed focus work, as well as photography in which focusing must be done with the utmost accuracy. When the camera is closed the lens, mirror and bellows all recede into the body of the camera, making it possible to reduce the size to an extent never before attained in a reflecting camera. A tripod socket is fitted in the base of the camera. Plate adapters can not be supplied for the 1A Graflex.







## THE 3A GRAFLEX

*Autographic*

### SPECIFICATIONS

Dimensions, 10 x 5 x 6 $\frac{3}{8}$ ; focal capacity, 10 in.; weight, 7 lbs.; size of lens board, 3 $\frac{1}{4}$  x 3 $\frac{1}{2}$  in.; minimum focus of lenses accommodated, 6 $\frac{1}{4}$  in. For Film only.

### THE PRICE

	3 $\frac{1}{4}$ x 5 $\frac{1}{2}$
3A Graflex without lens . . . . .	\$ 82.00
With Kodak Anastigmat Lens, <i>f</i> .4.5, No. 33 . . . . .	132.00
With B. & L. Kodak Anastigmat Lens, <i>f</i> .6.3, No. 4 . . . . .	112.00
With B. & L. Tessar Lens, Series Ic, <i>f</i> .4.5, No. 15a . . . . .	140.50
Leather Case for 3A Graflex . . . . .	9.00
Extra lens boards, each . . . . .	.50

To insure proper fitting we recommend that cameras be purchased complete with lenses as listed. We will not hold ourselves responsible for results with any of our cameras when lenses are not fitted by us.

Wide Angle Lenses cannot be used with Graflex Cameras.







## THE 3A GRAFLEX

Folmer's Patent, February 5, 1907, and April 21, 1908

THE many advantages of the Graflex principle of construction, combined with film convenience, in a camera that makes  $3\frac{1}{4} \times 5\frac{1}{2}$  pictures upon regular 3A Kodak Film, has resulted in a popular demand for the 3A Graflex.

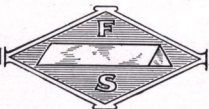
The Autographic Feature, fitted to the 3A Graflex, enables the operator to write the date or any other necessary record for future reference directly upon the film, at the time the picture is made. This permanent record affords a relief from uncertainty and disappointment when positive identification of negatives is required.

Built into, and part of the 3A Graflex, is the regular Graflex Focal Plane Shutter, giving instantaneous exposures from  $\frac{1}{10}$  to  $\frac{1}{10000}$  of a second, as well as time exposures of any duration. This shutter is fitted with the safety device which prevents winding the shutter before the mirror is set, thereby avoiding fogging of the film. The front of the camera is exceedingly rigid and large enough to accommodate Anastigmat lenses working at the highest speed; this front runs out on a platform fitted with a metal track running in guide-ways, which are accurately milled from heavy brass.

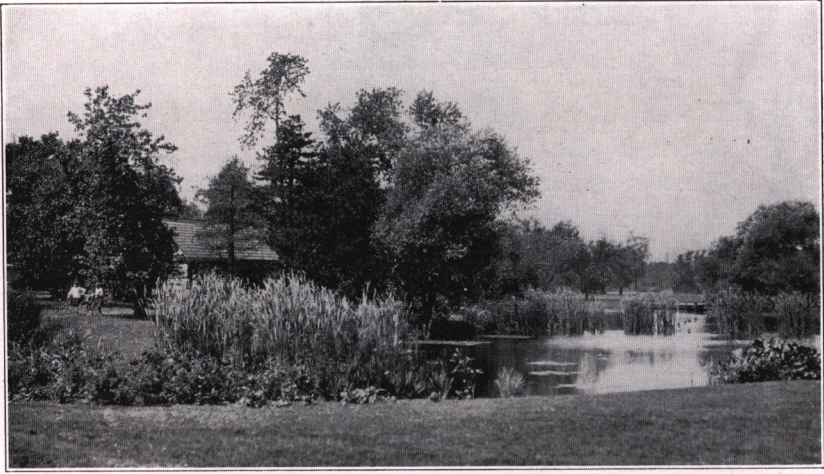
A metal stop is adjusted to the track at a point indicating the "infinity focus" of the lens and when the front is drawn out to this point, distant objects may be photographed without focusing. This is a valuable feature for general landscape work where none of the subjects are close to the camera.

The focusing hood, which opens automatically when the cover of the camera is raised, is amply large to enable the operator to focus perfectly. The focusing hood is detachable, allowing easy access to the ground glass screen when prolonged use makes cleaning necessary. The back of the camera is hinged, and when opened affords easy access to the film compartments.

The surplus space at each side of the camera is converted into film storage pockets, each carrying two rolls of film. This permits the operator to carry in the camera sufficient film for fifty exposures. The 3A Graflex is constructed for the use of roll film only and plate or other adapters cannot be fitted.







Size of picture made with  $2\frac{1}{2} \times 4\frac{1}{4}$  1A Graflex



Size of picture made with  $3\frac{1}{4} \times 5\frac{1}{2}$  3A Graflex





### 3A GRAFLEX—Continued



3A Graflex, Closed, Showing Autographic Feature

While it is rarely necessary to use a tripod with the Graflex, it is occasionally desirable to give prolonged time exposures with the camera on a tripod. For this purpose two tripod sockets are provided,—one in the base of the camera for horizontal, and another in the side for vertical negatives.

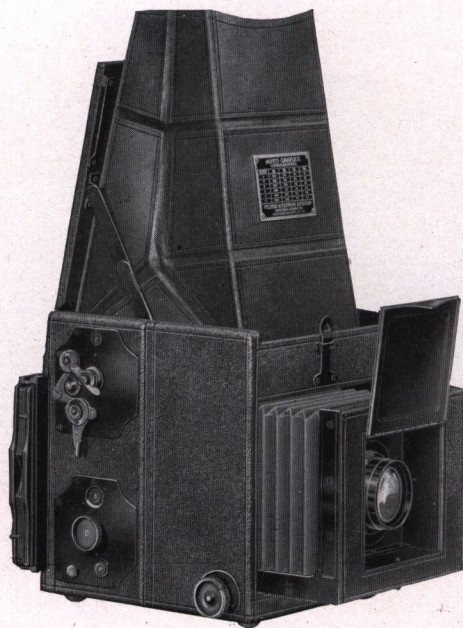
The body of the camera is made of selected mahogany, thoroughly kiln dried, lock-jointed and covered with the finest grade of Persian Morocco leather. All exposed wood parts are ebonized and harmonize perfectly with the brass parts, which are oxidized, giving a rich gun metal finish.

Any of the well known Anastigmat lenses may be fitted to the 3A Graflex, provided the lens is of suitable focal length. The fact that the 3A will accept lenses having a focus as short as  $6\frac{1}{4}$  inches as well as those of greater length, the camera having a bellows capacity of 10 inches, allows the operator of a 3A Graflex to make photographs of subjects close to the camera. Our experience has proved that the best results will be obtained with the lenses listed with the camera.

We urgently recommend the purchase of the 3A Graflex fitted with a lens working at  $f.4.5$ , as the full value of the camera can not be obtained unless lenses of sufficient speed are employed.







## THE AUTO GRAFLEX

Folmer's Patent, February 5, 1907

**P**RACTICAL simplicity in design and operation characterizes the construction of the Auto Graflex. This efficient camera is made in three sizes,  $3\frac{1}{4} \times 4\frac{1}{4}$ ,  $4 \times 5$  and  $5 \times 7$ , each of the models embodying the exclusive Graflex features. A slight movement of the Focusing Button causes the lens shield to automatically open. The new design of the Focusing Hood renders focusing particularly easy, and it is readily detachable for the purpose of cleaning the Ground Glass Screen.

The Auto Graflex takes the regular Graflex plate holder, and is constructed to take the Graflex Roll Holder, the Graflex Magazine Plate Holder, which may be loaded with twelve glass plates, and the Film Pack Adapter which takes the Film Pack.

Any of the well known Anastigmat lenses may be fitted to the Auto Graflex, although our experience has proved that the most satisfactory results will be obtained with the lenses listed with each model.

Wide-angle lenses cannot be used with Graflex Cameras.







Size of picture made with  $3\frac{1}{4} \times 4\frac{1}{4}$  Auto Graflex



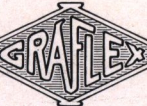
Size of picture made with  $4 \times 5$  Auto Graflex





Size of picture made with 5 x 7 Auto Graflex, 5 x 7 Compact Graflex, Home Portrait and Press Graflex

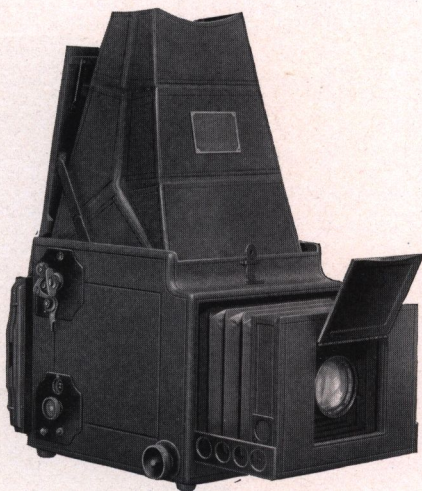




# AUTO GRAFLEX—Continued

The 5 x 7 Auto Graflex differs slightly in construction from the  $3\frac{1}{4} \times 4\frac{1}{4}$  and 4 x 5 sizes. On the 5 x 7 camera the front, as well as the lens cover, is hinged, affording easy access to the lens, and the construction of the camera body is slightly different from that of the smaller models, as will be noted in the illustration.

Wide angle and short focus lenses cannot be fitted to Graflex Cameras, as the lens must be far enough from the focal plane to provide room for the action of the mirror.



5 x 7 Auto Graflex

## SPECIFICATIONS

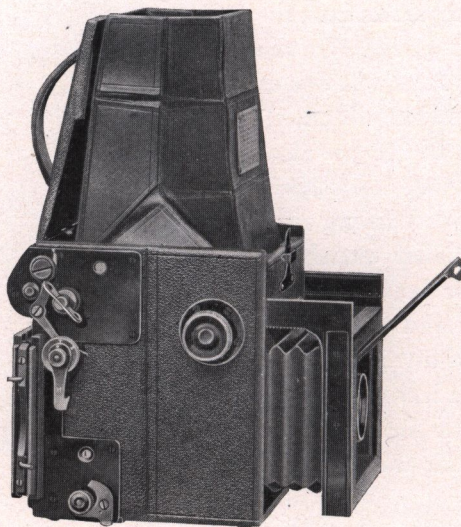
	$3\frac{1}{4} \times 4\frac{1}{4}$	4 x 5	5 x 7
Dimensions when closed . . .	$5\frac{3}{4} \times 5\frac{3}{8} \times 6\frac{1}{4}$	$6\frac{3}{4} \times 6\frac{1}{4} \times 7\frac{1}{4}$	$9\frac{1}{4} \times 8\frac{1}{4} \times 8\frac{3}{4}$
Focal capacity . . . . .	7 in.	$8\frac{1}{2}$ in.	12 in.
Weight . . . . .	3 lbs. 10 ozs.	5 lbs.	8 lbs.
Size of lens board . . . . .	$2\frac{3}{4} \times 2\frac{3}{4}$ in.	$3\frac{1}{4} \times 3\frac{1}{4}$ in.	4 x 4 in.
Minimum focus of lenses accommodated . . . . .	5 in.	6 in.	$7\frac{1}{2}$ in.

## THE PRICE

	$3\frac{1}{4} \times 4\frac{1}{4}$	4 x 5	5 x 7
Auto Graflex without lens, including one double holder. . .	\$55.00	\$ 65.00	\$ 80.00
With Kodak Anastigmat Lens, f.4.5 . . . . . No. 31	90.00	No. 32 105.50	No. 34 142.00
With B. & L. Kodak Lens, f.6.3 No. 2	78.50	No. 3 89.50	No. 5 121.50
With B. & L. Tessar, Series Ic, f.4.5 . . . . . No. 14	96.00	No. 15 113.00	No. 16 153.00
Graflex Roll Holder . . . . .	9.00	10.00	11.00
Graflex Magazine Plate Holder . . . . .	13.50	14.50	16.00
Film Pack Adapter, leather covered . . . . .	4.50	5.00	7.50
Leather case for camera and roll holder . . . . .	8.50	9.50	12.50
Leather case for camera and magazine plate holder . . . . .	9.25	10.25	13.25
Leather case to hold six plate holders . . . . .	5.25	5.75	6.25
Extra Graflex plate holders, each . . . . .	2.50	2.50	3.50
Extra lens boards, each . . . . .	.50	.50	.75
Ground glass panel, to interchange with plate holders . . . . .	2.25	2.75	3.75
Graflex Roll Holder Film, 6 exposures . . . . . No. 51	.35	No. 53 .45	No. 54 .80







## THE AUTO GRAFLEX JUNIOR

### SPECIFICATIONS

Dimensions closed,  $5 \times 4\frac{3}{8} \times 5$ ; focal capacity,  $5\frac{1}{2}$  in.; weight, 39 ozs.; minimum focus of lens accommodated, 4 in.

### THE PRICE

	$2\frac{1}{4} \times 3\frac{1}{4}$
Auto Graflex Junior without lens, including one double plate holder . . . . .	<b>\$38.00</b>
With Kodak Anastigmat Lens, <i>f</i> .4.5, No. 30 . . . . .	<b>69.00</b>
With B. & L. Kodak Anastigmat Lens, <i>f</i> .6.3, No. 1 . . . . .	<b>60.00</b>
With B. & L. Tessar, Series Ic, <i>f</i> .4.5, No. 13 . . . . .	<b>74.50</b>
Graflex Roll Holder . . . . .	<b>8.00</b>
Graflex Magazine Plate Holder, Model A . . . . .	<b>11.00</b>
Graflex Film Pack Adapter . . . . .	<b>3.50</b>
Ground glass panel, to interchange with plate holders . . . . .	<b>2.00</b>
Leather case for camera and plate holder or roll holder . . . . .	<b>6.00</b>
Leather case for six plate holders . . . . .	<b>3.90</b>
Leather case for camera and magazine plate holder . . . . .	<b>7.50</b>
Extra Graflex plate holders, each . . . . .	<b>1.50</b>
Graflex Roll Holder Film, No. 50, 6 exposures . . . . .	<b>.20</b>





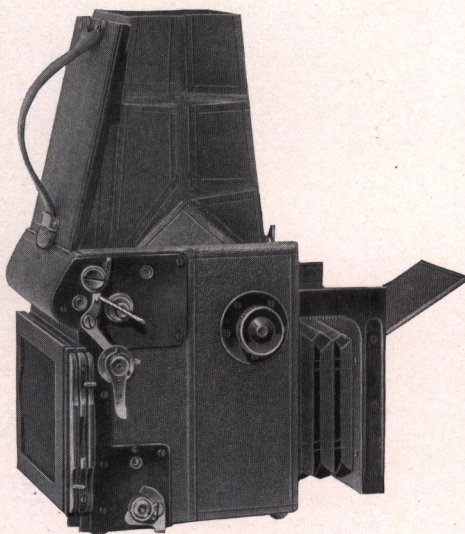
## THE AUTO GRAFLEX JUNIOR

**A** SMALL, compact camera of the reflecting type, embodying all the advantages of Graflex construction.

The short focal length of the speedy Anastigmat Lenses, recommended for use with this camera, and the available range in shutter speeds—from time exposures to  $\frac{1}{1000}$  of a second—insure a wide latitude of photographic work, and great depth of definition with lens stops of high illumination.

The  $2\frac{1}{4} \times 3\frac{1}{4}$  negatives, produced by this camera, show remarkable definition, and enlargements several times the original size may be readily made.

The front is of exceptional rigidity, as the focusing racks and front standards are stamped from one piece of heavy brass. This insures absolute parallelism of the front and focal plane, and also gives the front a permanent rigidity.



Auto Graflex Junior

The focusing hood is readily detachable, allowing easy access to the ground glass focusing screen. The focusing hood is automatic in its action, and is finished with a square top, making it exceptionally easy to secure vertical pictures with the camera held on its side.

The focusing pinion is adjusted through a split washer, which affords sufficient tension to hold the front at any point when focusing, irrespective of the position of the camera.

The Auto Graflex Junior is supplied with a depressed cupped metal front for carrying the lens. The metal front is threaded to accept the B. & L. Tessar No. 13 Series Ic Lens and B. & L. Kodak Anastigmat No. 1 Lens.

The Auto Graflex Junior is fitted with one tripod screw plate in the bottom of the camera.





## THE REVOLVING BACK GRAFLEX JUNIOR

**T**HE construction of this camera is similar to that of the Auto Graflex Junior. It makes a picture  $2\frac{1}{4} \times 3\frac{1}{4}$  inches and is equipped with a revolving back, which permits the operator to turn the back from a vertical to a horizontal position without removing the back from the camera, a particularly valuable feature for those who wish to make vertical negatives without turning the camera on its side. The revolving back may be changed from horizontal to vertical—or any intermediate—position without danger of fogging the plate or film when the slide is withdrawn. In order to intercept the rays of light for vertical as well as horizontal negatives, it is necessary to make the reflecting mirror a trifle longer than that supplied with the Auto Graflex Junior. This slightly increases the length of the camera body, requiring the use of a lens having a greater focal length.



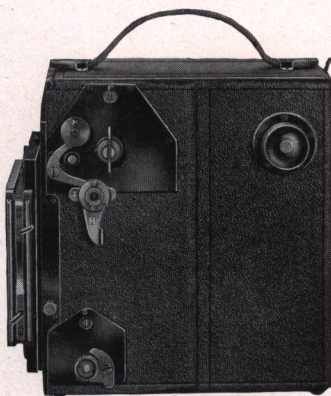




## REVOLVING BACK GRAFLEX JUNIOR—Continued

The shutter is the same as that supplied with other Graflex Cameras, having five fixed apertures permitting exposures of any duration from "time" to  $\frac{1}{1000}$  of a second. A safety device is provided which prevents the winding of the shutter curtain till the mirror is locked in focusing position, preventing the fogging of plate or film.

The front is of the same rigid construction as that on the Auto Graflex Junior, and the detachable focusing hood gives easy access to the focusing screen.



R. B. Graflex Junior Closed

The Revolving Back Graflex Junior is supplied with depressed cupped metal front for carrying the lens. This metal front is threaded to accept the B. & L. Tessar Lens, Series Ic, No. 15, and the B. & L. Kodak Anastigmat Lens No. 3. The Revolving Back Graflex Junior is fitted with one tripod socket in the bottom of the camera.

### SPECIFICATIONS

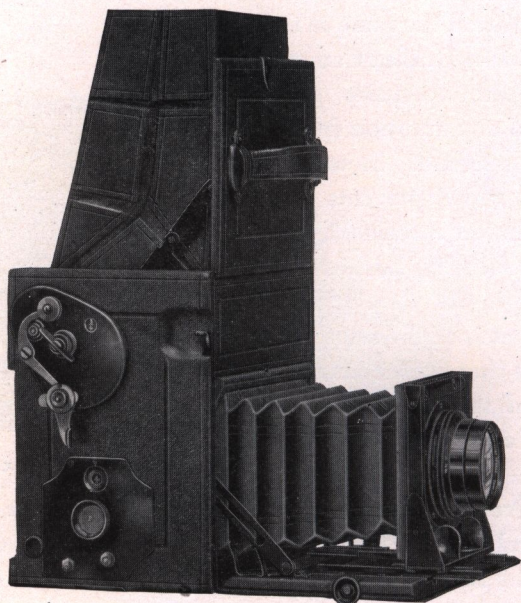
Dimensions when closed . . . . .	$2\frac{1}{4} \times 3\frac{1}{4}$ $6 \times 4\frac{1}{2} \times 6\frac{1}{2}$
Focal capacity . . . . .	$7\frac{1}{4}$ in.
Weight . . . . .	$3\frac{1}{4}$ lbs.
Minimum focus of lens accommodated . . . . .	$5\frac{1}{4}$ in.

### THE PRICE

Revolving Back Graflex Junior, without lens, including one double plate holder . . . . .	$2\frac{1}{4} \times 3\frac{1}{4}$ \$ 68.00
With Kodak Anastigmat Lens, <i>f</i> .4.5, No. 32 . . . . .	108.50
With B. & L. Kodak Anastigmat Lens, <i>f</i> .6.3, No. 3 . . . . .	92.50
With B. & L. Tessar Lens, Series Ic, <i>f</i> .4.5, No. 15 . . . . .	116.00
Graflex Roll Holder . . . . .	8.00
Graflex Magazine Plate Holder, Model A . . . . .	11.00
Graflex Film Pack Adapter . . . . .	3.50
Ground glass panel, to interchange with plate holders . . . . .	2.00
Leather case for camera and plate holder or roll holder . . . . .	6.50
Leather case for six plate holders . . . . .	3.90
Leather case for camera and magazine plate holder . . . . .	8.25
Extra Graflex plate holders, each . . . . .	1.50
Graflex Roll Holder Film, No. 50, 6 exposures . . . . .	.20







## THE COMPACT GRAFLEX

**T**HIS camera embodies many new structural features in addition to the advantage afforded in the interchangeable use of Plates, Graflex Roll Film and Film Packs. Particular attention is directed to the new automatic safety curtain which is actuated by the swinging mirror frame protecting the Plate or Film when the mirror is set in focusing position. As soon as the release lever is pressed, the swinging mirror causes the safety curtain to drop, and allows the Focal Plane Shutter to make the exposure in the usual way. The mirror frame in this camera is constructed of aluminum, which reduces the weight of the instrument, and as the mirror frame seats against an air cushion in the top of the camera, it eliminates all danger of vibration—a valuable feature when making slow exposures while holding the camera in the hand.

The Compact Graflex is not only small in size, but is built with the accuracy and rigidity necessary in a  $3\frac{1}{4} \times 5\frac{1}{2}$  and  $5 \times 7$  reflecting camera.

The focusing hood is made amply large to afford full view of the focusing screen when making exposures with the camera held in position for making either horizontal or vertical negatives. This





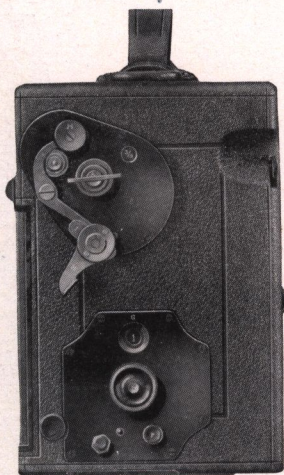


## COMPACT GRAFLEX —Continued

hood is made so that it is detachable, affording easy access to the focusing screen when cleaning is required. The lens board support is made of metal, and is fitted with spring actuated clamp which firmly grips the track at any desired point.

The Compact Graflex is fitted with the regular Graflex Focal Plane Shutter, permitting exposures of any duration from "time" to  $\frac{1}{1000}$  of a second. The back of the camera is constructed to take the Graflex Plate Holder, Graflex Film Pack Adapter, Graflex Magazine Plate Holder or the improved Graflex Roll Film Holder.

Two tripod sockets are provided, one in the base of the camera for horizontal, and another in the left side for vertical negatives.



The Compact Graflex  
Closed

### SPECIFICATIONS

	3¼ x 5½	5 x 7
Dimensions when closed . . . . .	7 x 4½ x 7	9½ x 7 x 9½
Focal capacity. . . . .	10 in.	12½ in.
Weight . . . . .	5½ lbs.	8½ lbs.
Size of lens board . . . . .	3¼ x 3¼ in.	4 x 4 in.
Minimum focus of lens accommodated . . . . .	6 in.	7½ in.

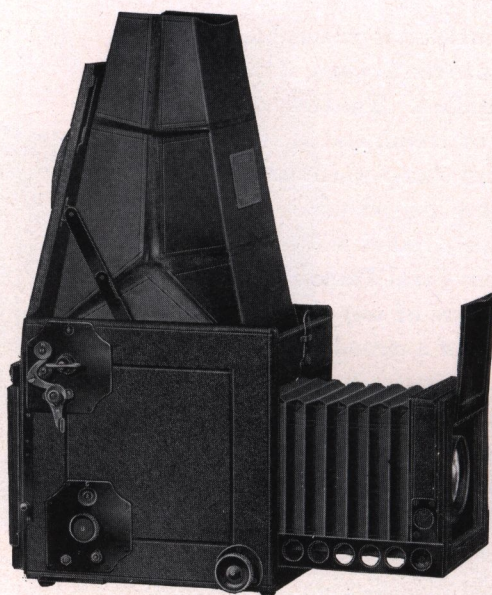
### THE PRICE

	3¼ x 5½	5 x 7
Compact Graflex without lens, including one double plate holder . . . . .	\$ 75.00	\$ 96.00
With Kodak Anastigmat Lens, f.4.5 . . . . . No. 33	125.00	No. 34 158.00
With B. & L. Kodak Anastigmat Lens . . . . . No. 4	105.00	No. 5 137.50
With B. & L. Tessar, Series Ic . . . . . No. 15a	133.50	No. 16 169.00
Graflex Roll Holder . . . . .	10.00	11.00
Graflex Magazine Plate Holder, Model A . . . . .	15.00	16.00
Graflex Film Pack Adapter, leather covered . . . . .	5.50	7.50
Ground glass panels, to interchange with plate holders . . . . .	2.75	3.75
Leather Carrying Case for camera and plate holder or roll holder . . . . .	8.50	10.50
Sole Leather Case for camera and magazine plate holder . . . . .	9.50	12.50
Extra Case for six plate holders . . . . .	5.75	6.25
Extra Graflex Plate Holders . . . . .	2.50	3.50
Extra lens boards, each . . . . .	.50	.75
Graflex Roll Holder Film, 6 exposures . . . . . No. 52	.40	No. 54 .80

Wide Angle Lenses can not be used with Graflex Cameras.







## THE TELESCOPIC REVOLVING BACK GRAFLEX

### SPECIFICATIONS

	3¼ x 4¼	4 x 5
Dimensions when closed . . . . .	6¼ x 5½ x 6⅞	8⅝ x 6⅝ x 7⅞
Focal capacity . . . . .	8½ in.	12 in.
Weight . . . . .	4½ lbs.	6¼ lbs.
Size of lens board . . . . .	3¼ x 3¼ in.	3¼ x 3¼ in.
Minimum focus of lens accommodated . . . . .	5¼ in.	7⅞ in.

### THE PRICE

	3¼ x 4¼	4 x 5
Telescopic R. B. Graflex without lens, including one double plate holder and focusing panel . . . . .	\$ 90.00	\$100.00
With Kodak Anastigmat Lens, <i>f</i> .4.5 . . . . . No. 32	130.50	No. 33 150.00
With B. & L. Kodak Anastigmat Lens, <i>f</i> .6.3 . . . . . No. 3	114.50	No. 5 141.50
With B. & L. Tessar, Series Ic, <i>f</i> .4.5 . . . . . No. 15	138.00	No. 16 173.00
Graflex Roll Holder . . . . .	9.00	10.00
Graflex Magazine Plate Holder . . . . .	13.50	14.50
Film Pack Adapter, leather covered . . . . .	4.50	5.00
Leather case for camera and roll holder, with lock and key . . . . .	9.75	11.50
Leather case for camera and magazine plate holder . . . . .	10.50	12.50
Leather case for six plate holders . . . . .	5.25	5.75
Extra Graflex plate holders, each . . . . .	2.50	2.50
Extra lens boards, each . . . . .	.50	.70







## THE TELESCOPIC REVOLVING BACK GRAFLEX

**T**HE turn-table back provided with this camera, enables the operator to make either vertical or horizontal negatives without turning the camera on its side.



Telescopic R. B. Graflex Closed

The camera can be brought into position for action quickly and easily. Pressure on a release, located near the handle, opens the camera and brings the hood into position for focusing, while the lens cover opens automatically the instant the front is racked out. An exceptionally large front board permits the use of the most rapid Anastigmat Lenses, and sufficient bellows capacity is provided for lenses of long enough focus to give excellent pictorial effect.

The regular Graflex Focal Plane Shutter and Reflecting Mirror, as described on pages 5, 6 and 7, are a part of this camera. The shutter is actuated to give automatic exposures from  $\frac{1}{10}$  to  $\frac{1}{1000}$  of a second, as well as time exposures of any duration.

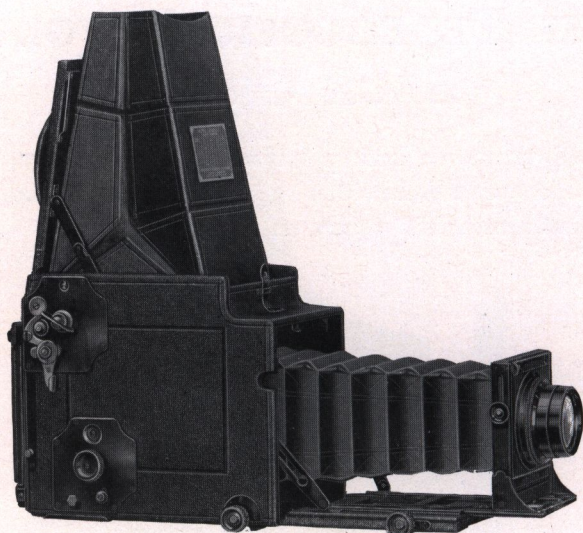
The large, roomy focusing hood is attached in such a manner that it may be readily detached from the camera, rendering the focusing screen easily accessible for cleaning or replacing.

The side arms to which the front of the camera is attached on the  $3\frac{1}{4} \times 4\frac{1}{4}$  Telescopic Revolving Back Graflex, are not perforated, as shown in the illustration.





GRAFLEX



## REVOLVING BACK AUTO GRAFLEX

Folmer's Patent, February 5, 1907, and June 8, 1908

### SPECIFICATIONS

	3¼ x 4¼	4 x 5
Dimensions when closed . . . . .	8½ x 5½ x 7	10 x 6½ x 8
Focal capacity . . . . .	15½ in.	18½ in.
Weight . . . . .	5¾ lbs.	7½ lbs.
Size of lens board . . . . .	3¼ x 3¼ in.	3¾ x 3¾ in.
Minimum focus of lenses accommodated . . . . .	7½ in.	8⅝ in.

### THE PRICE

	3¼ x 4¼	4 x 5
Revolving Back Auto Graflex, without lens, including one double plate holder and focusing panel . . . . .	<b>\$100.00</b>	<b>\$115.00</b>
With Kodak Anastigmat Lens, f.4.5 . . . . . No. 33	<b>150.00</b>	No. 34 <b>177.00</b>
With B. & L. Kodak Anastigmat Lens . . . . . No. 5	<b>141.50</b>	No. 6 <b>171.00</b>
With B. & L. Protar Lens, Series VIIa . . . . . No. 10	<b>182.00</b>	—
With B. & L. Tessar Lens, Series Ic . . . . . No. 15a	<b>158.50</b>	No. 17 <b>232.00</b>
Graflex Roll Holder . . . . .	<b>9.00</b>	<b>10.00</b>
Graflex Magazine Plate Holder, Model A . . . . .	<b>13.50</b>	<b>14.50</b>
Film Pack Adapter, leather covered . . . . .	<b>4.50</b>	<b>5.00</b>
Leather case for camera and roll holder, with lock and key . . . . .	<b>10.50</b>	<b>12.50</b>
Leather case for camera and magazine plate holder . . . . .	<b>11.50</b>	<b>13.50</b>
Leather case for six plate holders . . . . .	<b>5.25</b>	<b>5.75</b>
Extra Graflex plate holders, each . . . . .	<b>2.50</b>	<b>2.50</b>
Extra lens boards . . . . .	<b>.50</b>	<b>.70</b>

F

S

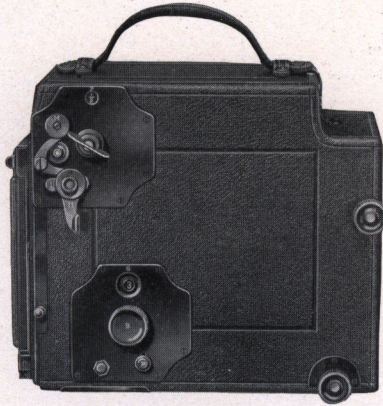




## REVOLVING BACK AUTO GRAFLEX

**T**HE special feature of the Revolving Back Auto Graflex is the great bellows capacity provided, enabling the operator to make full size reproductions of small objects in very close proximity to the camera, with the regular lens equipment, and to obtain a large image of objects at a considerable distance with a lens of great focal length.

The revolving or turn-table back may be changed from horizontal to vertical, or any intermediate position, without danger of fogging the plate or film when the slide is drawn.



Revolving Back Auto Graflex Closed

When opening the camera by pressing the release catch near the handle, the focusing hood automatically comes into position. The hood is of ample size to permit accurate focusing for either horizontal or vertical pictures. The hood is detachable, allowing easy access to the focusing screen.

The front bed is fitted with a telescopic rack with exceptional rigidity, which may be drawn out beyond the edge of the platform, permitting the great bellows extension required when making full size copies, and also accommodates lenses of long focus on the single combination of convertible lenses.

The front of the camera is racked out beyond the bed by using the forward focusing pinion.





REVOLVING BACK AUTO  
GRAFLEX—Continued

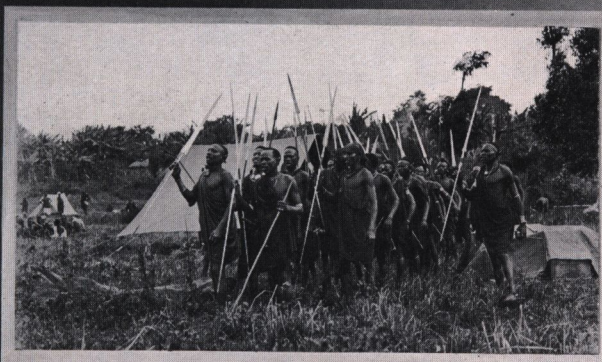
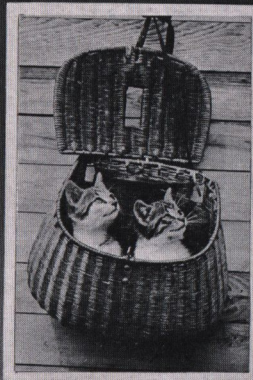


Size of picture made with 4 x 5 Revolving Back Auto Graflex

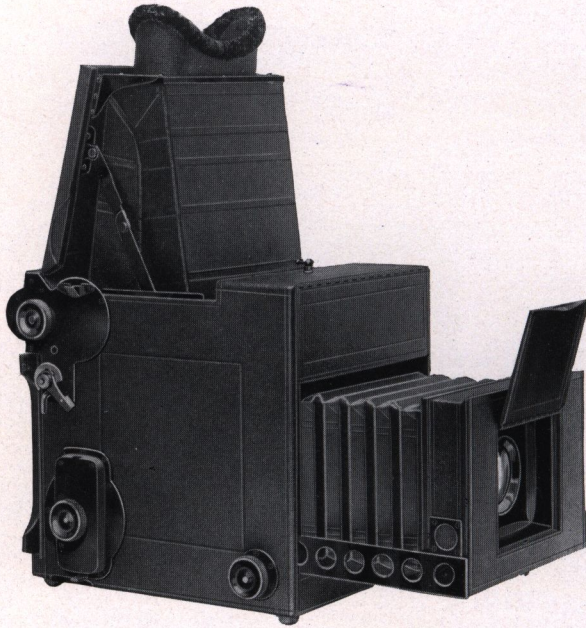
The Revolving Back Auto Graflex is fitted with a specially designed rising and falling front which permits full movement of the front regardless of the position of the bellows, as when the front is racked out the entire bellows will rise, the front and rear bellows frames sliding in grooves.

The regular Graflex Focal Plane Shutter, actuated to give exposures from "time" to  $\frac{1}{1000}$  of a second, is part of this camera.









## THE PRESS GRAFLEX

Folmer's Patent, February 5, 1907, and June 8, 1909

### SPECIFICATIONS

Dimensions, 11 x 8½ x 9¾ in.; focal capacity, 14 in.; weight, 11½ lbs.; size of lens board, 4 x 4 in.; minimum focus of lens accommodated, 8 in.

### THE PRICE

	5 x 7
Press Graflex without lens, including one double plate holder . . .	\$118.00
With Kodak Anastigmat Lens, <i>f</i> .4.5, No. 34 . . . . .	180.00
With B. & L. Kodak Anastigmat Lens, <i>f</i> .6.3, No. 5 . . . . .	159.50
With B. & L. Tessar Lens, Series Ic, <i>f</i> .4.5, No. 16 . . . . .	191.00
Graflex Roll Holder . . . . .	11.00
Graflex Magazine Plate Holder, Model A . . . . .	16.00
Film Pack Adapter, leather covered . . . . .	7.50
Leather case for camera and plate holder or roll holder, with lock and key . . . . .	15.50
Leather case for camera and magazine plate holder, with lock and key . . . . .	16.75
Leather case for six plate holders . . . . .	6.25
Extra Graflex holders, each . . . . .	3.50
Extra lens boards, each . . . . .	.75
Graflex Roll Holder Film, No. 54, 6 exposures . . . . .	.80







## THE PRESS GRAFLEX

**T**HIS camera meets the most exacting requirements of newspaper or commercial photographers supplying pictures for publication, and the speed with which the camera can be brought into action especially commends it to those engaged in this class of work.

The Press Graflex is constructed to withstand very strenuous usage without injury to the mechanism, or throwing out of alignment the most delicate adjustments, and the shutter is speeded up to give exposures as brief as  $\frac{1}{1500}$  of a second, as well as time exposures of any duration.

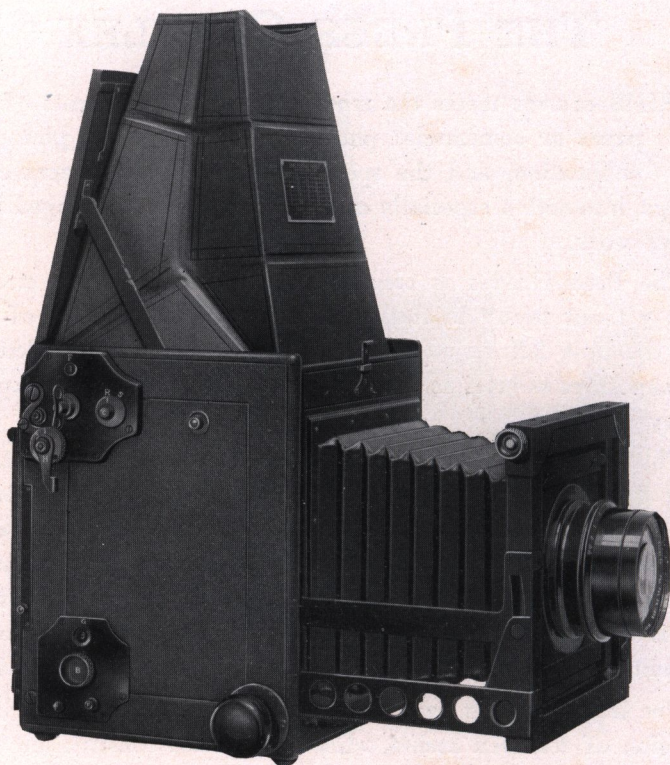
This camera is always instantly accessible for focusing, the top being opened by pressing a lever conveniently located near the handle; this automatically brings the focusing hood into position and the lens cover opens the instant the front is racked out, permitting the negative to be made with the least possible loss of time. This is a feature of great value to the newspaper photographer, who frequently has little or no time to prepare for making a negative.

The telescopic side arms are of sufficient length to give a bellows extension of fourteen inches, while the special construction of this camera will permit the use of lenses having a focal length as short as eight inches. The shutter curtain is wound by one complete turn of a large milled head, and the number indicating the size of the exposing aperture is reflected upward by a small wide angle prism. This, together with the fact that the tension apertures are plainly visible when the camera is in its normal position, makes it unnecessary to turn the camera on its side to see either its aperture or tension index.

The focusing hood is large and spacious, giving a full, unobstructed view of the field, while the eye-shield closely fits the contour of the face, effectually excluding outside light. A detachable, spring actuated ground glass panel holds the plate holder in place; this panel may be detached when using the Magazine Plate Holder or Graflex Roll Holder, or may be used for focusing when the camera is on a tripod in an elevated position. The Press Graflex is fitted with two tripod plates for either vertical or horizontal negatives. The Press Graflex is made in the 5 x 7 size only.







## THE HOME PORTRAIT GRAFLEX

### SPECIFICATIONS

Dimensions,  $9\frac{3}{4} \times 9 \times 10\frac{1}{2}$  in.; focal capacity, 15 in.; weight,  $11\frac{1}{2}$  lbs.; size of lens board,  $5 \times 5$  in.; minimum focus of lens accommodated,  $9\frac{1}{8}$  in.

### THE PRICE

Home Portrait Graflex without lens, including one double plate holder and focusing panel . . . . .	5 x 7	\$130.00
With B. & L. Tessar, Ic, f.4.5, No. 17 . . . . .		247.00
With B. & L. Tessar, Ic, f.4.5, No. 18 . . . . .		295.00
Graflex Roll Holder . . . . .		11.00
Graflex Magazine Plate Holder, Model A . . . . .		16.00
Film Pack Adapter, leather covered . . . . .		7.50
Leather case for camera and roll holder, with lock and key . . . . .		16.50
Leather case for camera and magazine plate holder, with lock and key . . . . .		18.00
Leather case for six plate holders . . . . .		6.25
Extra Graflex plate holders, each . . . . .		3.50
Extra lens boards, each . . . . .		.80
Graflex Roll Holder Film, No. 54, 6 exposures . . . . .		.80



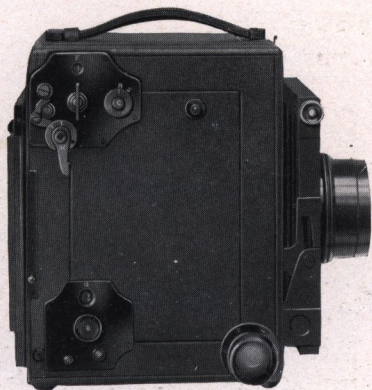




## THE HOME PORTRAIT GRAFLEX

**A**S its name implies, this camera is designed to meet the requirements of those making portraits in the home.

Although this camera is primarily intended for portrait work, it is equally efficient in all other branches of photography where excessive shutter speed is not essential. The Home Portrait Graflex is fitted with a special Focal Plane Shutter which will give



Home Portrait Graflex Closed

automatic exposures as long as one second, or instantaneous exposures of any duration up to  $\frac{1}{500}$  of a second. By a unique adjustment increased illumination may be secured with automatic exposures, by adding one or more of the exposing apertures to the full curtain opening. This adjustment consists of an escapement, which permits the curtain to travel its full length, utilizing all apertures. As an example, the curtain may be set for the full 7-inch and the next smaller, 2-inch, opening, this would give the effect of a 9-inch curtain aperture, or the curtain may be adjusted to give the 7-inch, 2-inch and the 1-inch opening. The shutter is adjusted to give time exposures of any duration.

One of the special features of this camera that makes it exceptionally efficient in portrait work is the swinging front movement. By a slight turn of a quick acting screw, the front may be tipped either up or down to correct the false perspective frequently obtained in sitting figures or in groups where some of the figures are placed



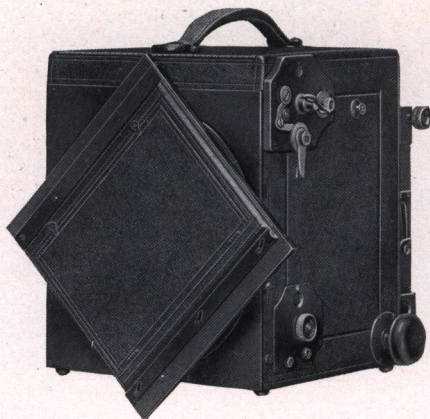




**HOME PORTRAIT GRAFLEX**  
—Continued

in front of others. By means of this device it is also possible to obtain just the diffusion required in the draperies. The fact that the image remains brilliantly visible while the adjustments are being made eliminates all uncertainty in regard to the effect secured.

This tilting adjustment can also be employed in a manner similar to a rising and falling front, as when the lens is tilted the front describes an arc, moving up or down according to the way the tilting screw is turned. When the lens is centered, the front board and the focal plane are parallel.



**Home Portrait Graflex, Showing Revolving Back**

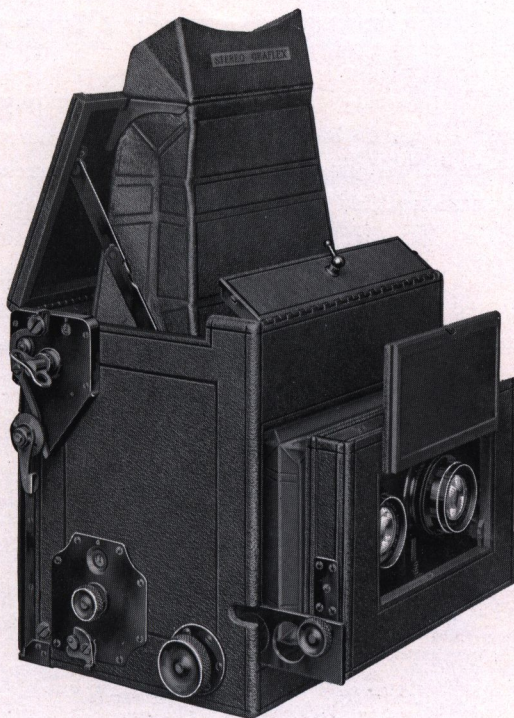
The Revolving Back with which this camera is equipped will permit the making of either vertical or horizontal negatives without tipping the camera on its side. When changing the back from one position to another, it is not necessary to remove it from the camera. A slight pressure on the release allows the back to revolve from a vertical to horizontal, or any intermediate, position.

The Home Portrait Graflex takes the regular 5 x 7 Graflex Plate Holder, Magazine Plate Holder or Film Pack Adapter. For those who prefer roll film we supply the Graflex Roll Holder, which takes 5 x 7 Eastman Graflex film. A tripod socket is provided that the camera may be used on a tripod for prolonged exposures.

Two buttons, one on each side of the camera, are provided to enable the operator to use a shoulder strap for supporting the camera.







# THE STEREO AUTO GRAFLEX

Folmer's Patent, February 5, 1907

## SPECIFICATIONS

Dimensions when closed,  $8\frac{1}{4} \times 9 \times 8\frac{3}{4}$  in.; focal capacity, 8 in.; weight, 8 lbs.; size of lens board,  $3 \times 5\frac{3}{4}$  in.; minimum focus of lenses accommodated,  $6\frac{1}{4}$  in.

## THE PRICE

	5 x 7
Stereo Auto Graflex without lenses, including one double plate holder and focusing panel . . . . .	\$150.00
With matched pair B. & L. Kodak Anastigmat Lenses, f.6.3, No. 3 . . . . .	199.00
Graflex Roll Holder . . . . .	11.00
Graflex Magazine Plate Holder, Model A . . . . .	16.00
Film Pack Adapter, leather covered . . . . .	7.50
Leather case for camera and roll holder, with lock and key . . . . .	11.50
Leather case for camera and magazine plate holder, with lock and key . . . . .	12.50
Extra Graflex plate holders, each . . . . .	3.50
Extra lens boards, each . . . . .	2.00
Graflex Roll Holder Film, No. 54, 6 exposures . . . . .	.80

To insure proper fitting we recommend that cameras be purchased complete with lenses as listed. We will not hold ourselves responsible for results with any of our cameras when lenses are not fitted by us.

When customers already own Anastigmat lenses of suitable focal length, and send them to us for fitting, a nominal charge will be made for the work.







## THE STEREO AUTO GRAFLEX

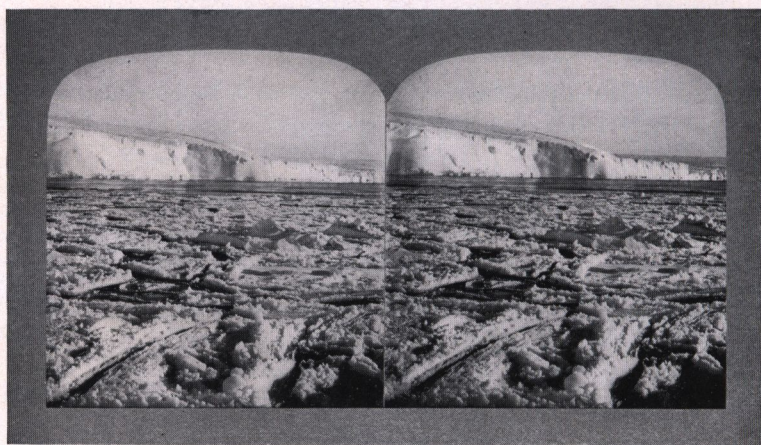
**T**HERE is probably no branch of photography that affords greater pleasure than the making of stereoscopic pictures, and the steadily increasing number of purchasers of the Stereo Graflex indicates that stereo photography is growing in popularity.

The Stereo Auto Graflex Camera is a counterpart of the regular Graflex, in stereo form. This camera is constructed with a wide front to carry a matched pair of lenses for the production of stereoscopic pictures.

It differs entirely from any other form of stereo camera, not only in its unique design and perfect adjustment, but in the method of focusing. The hood at the top is practically a stereoscope, as it contains a pair of stereo prisms. These prisms are arranged to give the stereoscopic effect when focusing, as the operator sees but one image on the ground glass screen—right side up—not inverted. The object is viewed just as one would see the finished stereogram through a stereoscope.

A rising front operated by a rack and pinion enables the operator to cut off the foreground when desired. The stereo partition is a part of the camera and is not removable.

The Stereo Graflex is fitted with the regular Graflex Focal Plane Shutter with safety device, giving exposures of any duration from time to  $\frac{1}{1000}$  of a second.







## THE NO. 0 GRAPHIC CAMERA

Folmer's Patent, February 5, 1907, and April 21, 1908

**T**HIS little camera is especially suitable where the advantages of the high grade Anastigmat Lens and Focal Plane Shutter are required in a camera of the most compact construction.

The extreme simplicity of operation, and the fact that the lens is always in focus, makes it possible for the merest novice in photography to secure a very large percentage of perfect results. With the lens working at its full aperture of  $f.6.3$ , everything up to within twelve feet of the camera is in focus, and by using a smaller diaphragm this distance can be greatly decreased.

The body of the No. 0 Graphic is made of selected mahogany and aluminum, covered with the best quality of Morocco leather.

The lens is the B. & L. Kodak Anastigmat  $f.6.3$ , having a focal length of three inches. The diaphragm is controlled from the outside of the camera by a unique mechanical device, the lens opening being plainly shown on a dial on the top of the instrument.

The Graflex Focal Plane Shutter with which the No. 0 Graphic is equipped has three apertures for instantaneous exposures— $\frac{1}{4}$ ,  $\frac{3}{4}$  and  $1\frac{1}{2}$  inches, giving a range of instantaneous exposures from  $\frac{1}{10}$  to  $\frac{1}{500}$  of a second, and one full opening for time exposures of any duration. An automatic sky-shade prevents the strong sky rays from creating flare and serves the purpose of an automatic cap, which closes, blocking the light while the curtain is being re-set. When it is necessary to give time exposures the shade may be locked open.







No. 0 GRAPHIC CAMERA  
—Continued

A specially constructed folding sight finder is provided, recording approximately the field covered by the lens when the camera is held on a level with the eyes at normal reading distance. Fitted to this finder is a small metal bound mirror which, when swung into position, converts the instrument into a deceptive angle camera, permitting the making of photographs at right angles to the line of vision.

The No. 0 Graphic takes the regular No. 0 F. P. Kodak Film for pictures  $1\frac{5}{8} \times 2\frac{1}{2}$  inches.



Size of picture made with No. 0 Graphic Camera

A valuable feature of the No. 0 Graphic is that the negatives made with this camera show such microscopic definition, and exceptional depth, that enlargements of any size up to  $8 \times 10$ , which retain all the brilliancy of a contact print, can be easily made.

The No. 0 Graphic Enlarging Camera, shown on page 40, is provided as a means for making enlargements  $6\frac{1}{2} \times 8\frac{1}{2}$ , or smaller, from No. 0 Graphic negatives.

**SPECIFICATIONS**

Dimensions,  $5 \times 3\frac{1}{2} \times 3\frac{1}{4}$  in.; weight, 25 oz.

**THE PRICE**

No. 0 Graphic Camera with B. & L. Kodak Anastigmat Lens, <i>f</i> .6.3	$1\frac{5}{8} \times 2\frac{1}{2}$ \$40.00
Sole leather carrying case . . . . .	4.00







## F. & S. FINGER PRINT CAMERA



**T**HE F. & S. Finger Print Camera affords not only a thoroughly efficient means for securing photographically accurate records of finger prints, but is readily adapted to other uses where accurate photographic records are desired. There is often occasion for quickly obtaining a picture of a small pattern, signature, formula, label, photograph, or a portion of some printed or written matter. Its small size makes it most convenient for general use, especially in locations inaccessible to ordinary apparatus.

The camera is equipped with four miniature lamps operated by batteries contained in the camera. These lamps are located behind the front aperture and serve to illuminate the finger prints, or other subjects when the photographic record is made. The lens is an *f.6.3* Kodak Anastigmat which is unalterably fixed in the camera at a point that renders a *full sized* image of the finger print with extreme definition.

### SPECIFICATIONS

Dimensions,  $11\frac{3}{4} \times 6 \times 6$  inches; weight, with batteries, 5 lbs. 8 ozs.

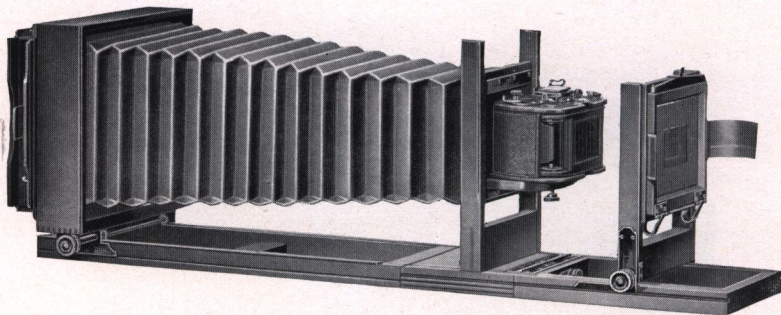
### THE PRICE

F. & S. Finger-Print Camera complete with lens, shutter, two batteries, ten lamps and one double plate holder, $2\frac{1}{4} \times 3\frac{1}{4}$	\$33.00
Graflex Roll Holder (for 6-exposure Graflex Roll Film)	8.00
Graflex Film Pack Adapter (for 12-exposure Premo Film Pack, $2\frac{1}{4} \times 3\frac{1}{4}$ )	3.50
Graflex Magazine Plate Holder (for 12 glass plates, $2\frac{1}{4} \times 3\frac{1}{4}$ )	11.00
Graflex Plate Holder, $2\frac{1}{4} \times 3\frac{1}{4}$	1.50
Leather Case for Camera	11.50
Extra batteries No. 789, each	.65
Extra Mazda Miniature Lamps, each	.20
Extra Mazda Miniature Lamps, per carton of ten	2.00
Seed Process Plates, $2\frac{1}{4} \times 3\frac{1}{4}$ , per dozen	.35
Graflex Roll Holder Film, No. 50, 6 exposures, $2\frac{1}{4} \times 3\frac{1}{4}$ , per roll	.20
Premo Film Pack, 12 exposures, $2\frac{1}{4} \times 3\frac{1}{4}$ , per pack	.40





GRATEX



## THE NO. 0 GRAPHIC ENLARGING CAMERA

**W**ITH this camera enlargements of any size up to  $6\frac{1}{2} \times 8\frac{1}{2}$  may be made on Bromide or developing out paper, from  $4 \times 5$  or smaller negatives, with either daylight or artificial light, the resulting enlargement having all the brilliancy of a contact print. This camera is extremely easy to operate, and the making of enlargements with it is no more complicated than the making of prints in the usual way. The negative to be enlarged is placed in the carrier while the No. 0 Graphic is placed in position with the back removed and the lens shade elevated; the camera is then pointed towards the light and the image focused on the ground glass. After focusing a scribe line may be marked on the scale so that refocusing will not be necessary when making subsequent enlargements of the same size. The holder, containing a sheet of Bromide or developing paper, is then placed in position, the slide drawn and the exposure made. As the same lens used for making the negative is used for enlarging, all the brilliancy and detail are retained in the enlargement.

The No. 0 Graphic Enlarging Camera is furnished with mats for making 3A ( $3\frac{1}{4} \times 5\frac{1}{2}$ ) enlargements only.

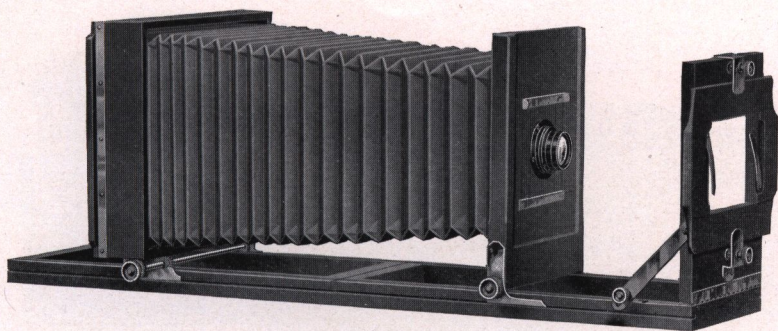
### THE PRICE

No. 0 Graphic Enlarging Camera, including holder . . . . .	$6\frac{1}{2} \times 8\frac{1}{2}$ \$27.00
Do., with R. R. Lens, $6\frac{1}{2}$ -inch, and Automatic Shutter . . . . .	37.00

F

S





## THE GRAFLEX ENLARGING CAMERA

**T**HE Graflex Enlarging Camera is constructed to make enlargements 8 x 10 and smaller from negatives of any size up to 4 x 5 or  $3\frac{1}{4} \times 5\frac{1}{2}$  inches.

The negative carrier is fitted so that it may be adjusted to any position, vertical, horizontal and oscillating movements being afforded. The frame to which the negative carrier is attached is also adjustable so that it may be tilted either towards or away from the lens, allowing the operator to correct any distortion in negatives where the lines are not parallel.

We regularly list the camera with the No. 3 Kodak Anastigmat Lens, but the camera will give perfect results with any lens up to  $7\frac{1}{2}$  inch focus with which Graflex Cameras are equipped. With this instrument enlargements may be made on Bromide or developing paper, either by daylight or artificial light, and it is a valuable addition to the equipment of any photographer wishing to make enlargements without incurring the expense of elaborate enlarging apparatus.

### SPECIFICATIONS

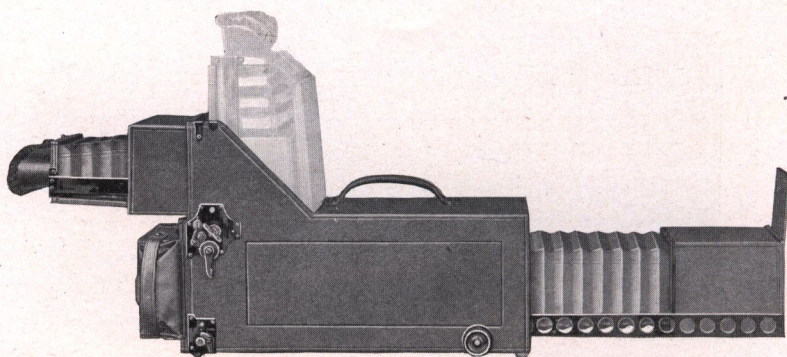
Bellows capacity . . . . .	28 in.
Length of bed . . . . .	36 in.
Size of lens board . . . . .	$4\frac{1}{4} \times 4\frac{1}{4}$ in.
Weight . . . . .	$8\frac{3}{4}$ lbs.

### THE PRICE

Graflex Enlarging Camera, 8 x 10, including one Bromide Paper Holder . . . . .	\$30.00
B. & L. Kodak Anastigmat Lens, f.6.3, No. 3, in barrel with Iris Diaphragm . . . . .	24.50
Extra lens board . . . . .	.40







## THE NATURALISTS' GRAFLEX

Folmer's Patent, February 5, 1907, and April 21, 1908

**T**HE Naturalists' Graflex Camera is designed especially for naturalists' work in photographing birds, wild animals, or similar subjects where long focus or tele-photo lenses are required. The camera in general design and construction is similar to the regular Auto Graflex, but the increased length of camera accommodates much longer side arms. The arms are made of heavy brass, giving a liberal extension, yet maintaining absolute rigidity. The focus is obtained by reflection on the upper mirror, and enables the operator to conceal himself behind a stone or log and focus from the rear of the camera without exposing too much of his person, as would be the case in using cameras of the usual construction.

The focusing hood is hinged so that it will swing up, permitting the operator to view the image in the same way as with the Press Graflex.

The Naturalists' Graflex will not accommodate lenses shorter than  $12\frac{3}{4}$  inches.

### SPECIFICATIONS

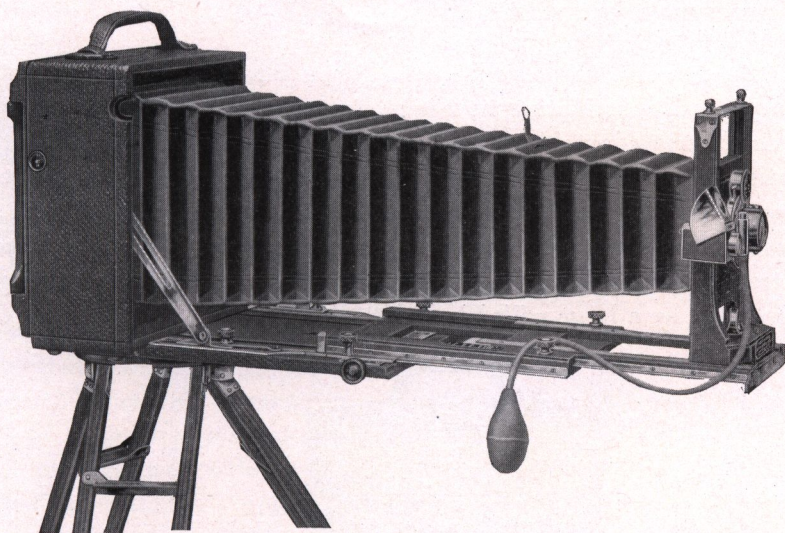
Dimensions,  $19 \times 6\frac{1}{4} \times 9\frac{3}{4}$  in.; focal capacity, 26 in.; weight,  $7\frac{1}{2}$  lbs.; size of lens board,  $4 \times 4$  in.; minimum focus of lenses accommodated,  $12\frac{3}{4}$  in.

### THE PRICE

Naturalists' Graflex, $4 \times 5$ , without lens, including one double plate holder . . . . .	$4 \times 5$ \$150.00
With Turner-Reich Convertible Anastigmat Lens, Series II, No. 6	300.00
Graflex Magazine Plate or Cut Film Holder, Model A . . . . .	14.50
Film Pack Adapter, leather covered . . . . .	5.00
Extra Graflex holders, each . . . . .	2.50
Graflex Roll Holder . . . . .	10.00
Leather case for camera and roll holder or magazine plate holder . .	21.50







## REVOLVING BACK CYCLE GRAPHIC

**F**OR many years the Graphic Camera has held the reputation of being the foremost camera of its type, which accounts for its extensive use by an increasing number of photographers—both professional and amateur. For the technical worker the Revolving Back Graphic is particularly valuable, as its rigid construction and accurate adjustment make it indispensable for those engaged in scientific research, involving the application of photography.

Lenses working at a large aperture are necessarily much larger than those having a slower speed. Graphic Cameras are constructed with a view to accommodating lenses of this type, an especially large and rigid front being provided to accept high speed Anastigmats.

The rigidity of the Graphic—due to the most careful, accurate and thorough construction ever incorporated in photographic apparatus—is still a Graphic feature which will bear particular emphasis, and is one of the features which has given the Graphic its prestige with scientific and advanced photographic workers.

To allow the use of long focus lenses, ample bellows capacity is provided. The front runs out on telescopic framed tracks, reinforced by angle brass guides with milled head binding screws, which lock the bed rigidly in place. The extension tracks being in the form of frames allow extra large lens space when closed. The construction

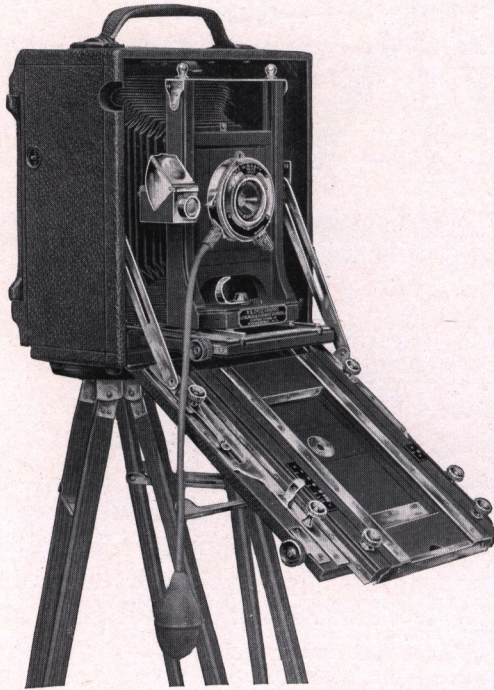






**REVOLVING BACK CYCLE  
GRAPHIC—Continued**

of these tracks affords a wider base for the lens support and prevents any lateral or oscillating movement, thus rendering the Cycle Graphic particularly adaptable for tele-photo and other extremely accurate work. Cycle Graphics will take, if desired, lenses two or more sizes larger than the plate really calls for. The front is clamped with a wide base block and heavy bolt, insuring the utmost rigidity and strength. There is also a fine rack and pinion for accurate focusing, operated by a large milled head button.



**R. B. Cycle Graphic with Supplementary Wide Angle Bed**

The swing back is secured by an adjustment of the side arms running in a slotted plate on the platform and locked by means of milled head binding screws.

The revolving back involves the same principle as that employed in the Revolving Back Graflex. By releasing a small catch at the right of the camera, the back may be revolved from the horizontal to a vertical position and the revolving back frame may be removed without the use of tools. The revolving back is fitted to all Graphic Cameras except the 8 x 10.







REVOLVING BACK CYCLE  
GRAPHIC—Continued

The new rising and falling front mechanism, by means of which the front may be raised or lowered to any desired position, is at the same time a lock in itself. No further locking device or binding screws are required.

The Cycle Graphic is constructed of the best quality selected stock, lock jointed, and covered with handsome black grained leather. The bellows are the finest quality red Russia leather.

A brilliant view finder, with hood, is attached to the front, moving with it while focusing. The lens board is removable. The Revolving Back Cycle Graphic is listed with the well known Anastigmat lenses, and to complete an outfit of this kind, the Graflex Focal Plane Shutter is quite indispensable, if it is desired to secure the very best results that can be had with a lens of this type. When the Graflex Shutter is ordered as a part of this outfit no extra charge is made for fitting, and a carrying case which will hold the camera with Focal Plane Shutter attached is supplied in place of the regular case without extra charge.

The regular Premo Film Pack Adapter is interchangeable with the Graphic Plate Holder in the 4 x 5 and 5 x 7 sizes.

SPECIFICATIONS

	4 x 5	5 x 7	6½ x 8½	8 x 10
Dimensions . . .	6⅞ x 4 x 7⅞	8¾ x 4¼ x 9¼	10⅝ x 4½ x 10⅝	12 x 5 x 12
Focal capacity . . .	17 in.	22½ in.	26 in.	30 in.
Weight . . . . *	3¾ lbs.	6¼ lbs.	7½ lbs.	10½ lbs.
Size of lens board .	2½ x 2½ in.	3½ x 3½ in.	4½ x 4½ in.	4½ x 4½ in.

THE PRICE

Including double plate holder and sole leather carrying case

	4 x 5	5 x 7	6½ x 8½	8 x 10*
Revolving Back Cycle Graphic with Graphic Rapid Rectilinear Lens and Automatic Shutter . . .	\$ 56.00	\$ 66.00	\$ 80.00	\$105.00
With B. & L. Kodak Anastigmat Lens, f.6.3, and Volute Shutter . . .	No. 3 94.80	No. 5 122.80	No. 6 145.70	—
With B. & L. Protar Lens, Series VIIa, and Volute Shutter . . .	No. 7 137.30	No. 10 163.30	—	—
Extra plate holders, each . . .	1.25	1.50	2.00	2.25
Graflex Focal Plane Shutter, leather covered to match, extra . . .	23.00	25.00	28.00	30.00
Supplementary bed for Wide Angle Lenses . . . . .	9.00	10.00	11.00	12.00
Extra lens boards, each . . . .	.35	.40	.45	.50

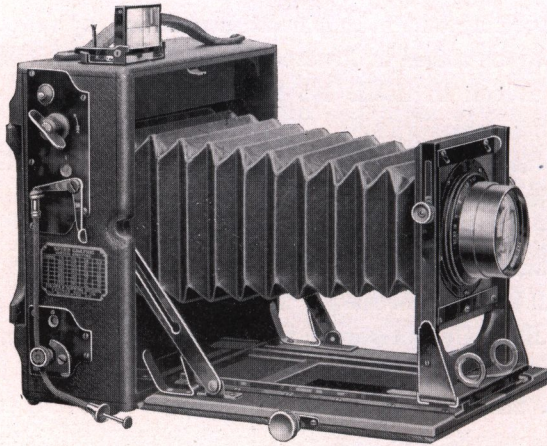
\*Furnished with reversible back only.

To insure proper fitting we recommend that cameras be purchased complete with lenses as listed. We will not hold ourselves responsible for results with any of our cameras when lenses are not fitted by us.

When customers already own Anastigmat lenses and send them to us for fitting, a nominal charge will be made for the work.







## THE SPEED GRAPHIC

### SPECIFICATIONS

	3¼ x 4¼	4 x 5	3¼ x 5½	5 x 7
Dimensions . . .	5¾ x 2¾ x 6¼	6½ x 4 x 6¾	7 x 3½ x 7½	8¾ x 3¾ x 9¾
Focal capacity . . .	10 in.	12 in.	12 in.	16 in.
Weight . . . . .	2½ lbs.	3½ lbs.	3¾ lbs.	5½ lbs.
Size of lens board . . .	2½ x 2½ in.	3¼ x 3¼ in.	3¼ x 3¼ in.	3¾ x 3¾ in.

### THE PRICE

Including one double plate holder

	3¼ x 4¼	4 x 5	3¼ x 5½	5 x 7
Speed Graphic without lens	\$48.00	\$49.00	\$50.00	\$ 62.00
With Kodak Anastigmat Lens	No. 31	No. 32	No. 33	No. 34
<i>f</i> .4.5 . . . . .	83.00	89.50	100.00	124.00
With B. & L. Kodak Anastigmat Lens, <i>f</i> .6.3 . . .	No. 2	No. 3	No. 4	No. 5
	71.50	73.50	80.00	103.50
With B. & L. Tessar, Series	No. 14	No. 15	No. 15a	No. 16
<i>Ic</i> , <i>f</i> .4.5 . . . . .	89.00	97.00	108.50	135.00
*Sole leather carrying case, with lock and key . . .	7.50	8.50	8.50	10.50
Extra lens board . . . . .	.35	.50	.50	.70
Extra plate holder. . . . .	1.25	1.25	1.25	1.50

\*Carrying cases for Speed Graphic Cameras hold the camera and plate holders as follows:  
3¼ x 4¼, 5 holders; 4 x 5, 6 holders; 3¼ x 5½, 5 holders; 5 x 7, 6 holders.



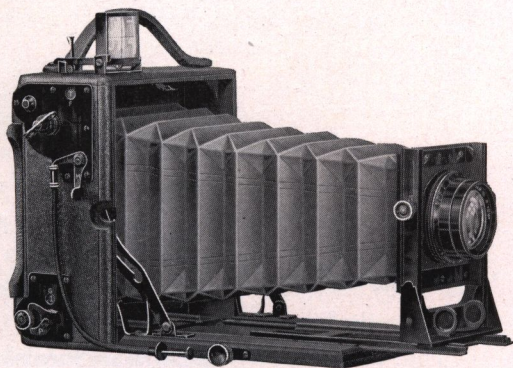




## THE SPEED GRAPHIC

**T**HE Speed Graphic Camera is designed to meet the requirements of those desiring Focal Plane Shutter efficiency in a compact folding camera.

The Graflex Focal Plane Shutter, described on page 53, is built into the body of the Speed Graphic Camera, which is made in four sizes,  $3\frac{1}{4} \times 4\frac{1}{4}$ ,  $4 \times 5$ ,  $3\frac{1}{4} \times 5\frac{1}{2}$  and  $5 \times 7$ . This shutter is actuated to give time exposures of any duration, and automatic exposures from  $\frac{1}{10}$  to  $\frac{1}{1000}$  of a second, excepting the shutter in the  $3\frac{1}{4} \times 4\frac{1}{4}$  model which differs from that of the larger sizes, in that it has but four instead of five exposing apertures and the exposure speeds are limited to  $\frac{1}{500}$  of a second, which is amply rapid for a camera using the short focus lenses fitted to the  $3\frac{1}{4} \times 4\frac{1}{4}$  Speed Graphic.



$3\frac{1}{4} \times 4\frac{1}{4}$  Speed Graphic

The front is large enough to accept the high speed Anastigmat lenses, and sufficiently firm to prevent vibration when the camera is used with the bellows extended to its full capacity. The camera is provided with a rising front, which affords angle movement to eliminate an objectionable foreground, or to allow the camera to be used for the photography of architectural subjects. A piano hinge extending the full width of the camera attaches the camera body to the folding platform, which is framed and paneled to insure a maximum of rigidity without excessive weight. The extension track is made in the form of a frame, which is not only extremely rigid, but allows the lens to rest between the tracks when the camera is closed.

The Speed Graphic is made of selected, kiln-dried mahogany especially treated to withstand climatic changes and covered with the best grade Morocco leather. The bellows is of ample length to accommodate the single combinations of convertible lenses, and is made of black leather. All exposed wood parts are ebonized and the metal work is oxidized, producing an instrument of attractive





SPEED GRAPHIC—Continued



Speed Graphic  
Closed

appearance. The Speed Graphic is supplied with a non-reversible back, and when making vertical negatives the camera is turned on its side, two tripod sockets being provided.

The  $3\frac{1}{4} \times 4\frac{1}{4}$  Speed Graphic is a particularly compact camera, as the curtain is adjusted to the camera to wind in a reverse manner to that on the other instruments of this type, allowing it to be stored in such a way as to decrease the size of the camera.

The spring actuated ground glass focusing panel on all Speed Graphic Cameras is fitted with a spring cover which is equipped with side shields; when this cover is released it effectively answers the purpose of a focusing cloth. The ground glass back will accept the Graphic Plate Holder or the Premo Film Pack Adapter. Focusing is done by rack and pinion, a large milled head for focusing being conveniently located at the right side of the drop bed.

The Speed Graphic Cameras are furnished with the folding Graphic Sight Finder. Horizontal and vertical centering lines engraved on the finder lens make it possible to exactly center the object by means of a sight bar at the back of the finder. When the finder frame is folded down, the sight bar automatically drops into position. These cameras are provided with a rising front, and the lens boards can be easily removed by shifting a sliding lock bar.

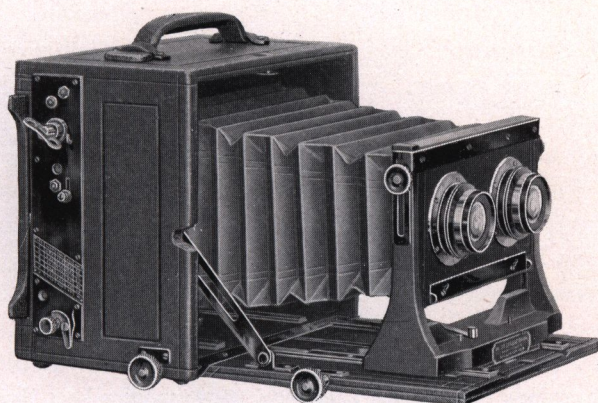
For those who wish to use Graflex attachments with Speed Graphic Cameras, we can alter the back of the camera to accept the Graflex Roll Rolder, Graflex Plate Holder, Magazine Holder, and the Graflex Film Pack Adapter.

Prices for altering the backs of Speed Graphic Cameras to accept Graflex Holders are as follows. The price includes focusing panel, but no plate or film holder.

$3\frac{1}{4} \times 4\frac{1}{4}$	$4 \times 5$	$3\frac{1}{4} \times 5\frac{1}{2}$	$5 \times 7$
\$7.50	\$8.00	\$8.00	\$9.00







# THE STEREOSCOPIC GRAPHIC

With Auto Graflex Shutter

Folmer's Patents, November 5, 1901, February 5, 1907

## SPECIFICATIONS

Dimensions when closed,  $8\frac{7}{8} \times 5\frac{1}{2} \times 7\frac{7}{8}$  in.; focal capacity,  $12\frac{3}{4}$  in.; weight, 6 lbs.; size of lens board,  $3\frac{1}{8} \times 6$  in.; minimum focus of lenses accommodated,  $3\frac{3}{4}$  in.

## THE PRICE

	5 x 7
Stereoscopic Graphic without lenses, including one double plate holder	\$ 90.00
Stereoscopic Graphic with matched B. & L. Kodak Anastigmat Lenses, No. 3, <i>f</i> .6.3	139.00
Stereoscopic Graphic with matched B. & L. Protar Lenses, Series V, No. 1	137.00
Extra for B. & L. Kodak Anastigmat Lens No. 5, <i>f</i> .6.3, for full size plate	41.50
Extra for B. & L. Protar Lens, Series VIIa, No. 10, <i>f</i> .6.3, for full size plate	82.00
Leather carrying case	11.00
Extra lens boards, each	.60
Graphic plate holders, each	1.50







## THE STEREOSCOPIC GRAPHIC

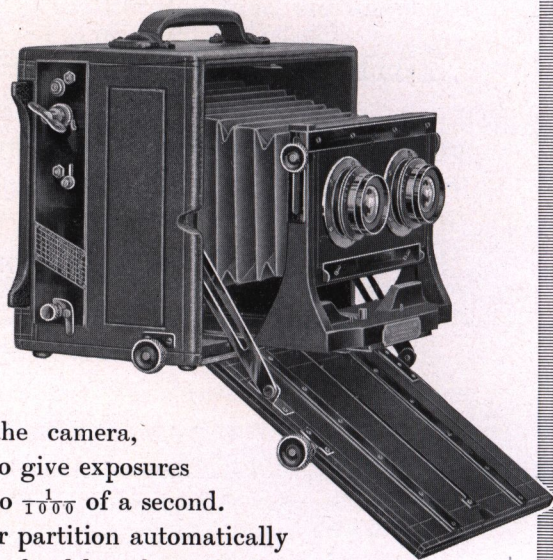
**T**HE Stereoscopic Graphic represents the highest type of folding stereo camera. It is constructed of selected, kiln-dried mahogany, highly finished and covered with the best quality black grained leather. All metal parts are oxidized in gun metal finish.

The front platform is attached to the body of the camera by a heavy piano hinge, extending the full width of the instrument, and the platform can be dropped out of the way, for use with lenses of short focus.

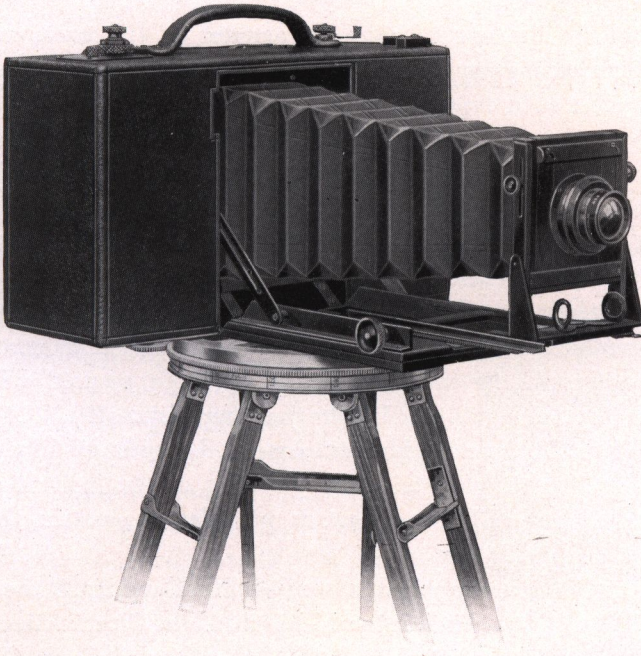
The front is securely fastened to a wide track of hard milled brass, preventing oscillation and side movement when the front is racked out. Focus is adjusted by rack and pinion.

An extra pinion is set in the body of the camera for use with wide angle lenses when the front platform is dropped. The front is provided with a raising and lowering adjustment, and the camera has a bellows extension of  $12\frac{3}{4}$  inches. The Graflex Focal Plane Shutter is built into the body of the camera, the shutter being actuated to give exposures of any duration from time to  $\frac{1}{1000}$  of a second.

Our special spring roller partition automatically adjusts itself to lenses of any focal length, as the front is racked in and out. A removable, spring actuated ground-glass focusing screen is fitted to the camera and a large hinged focusing panel, with side shields, gives full view of the screen. Any matched pair of standard Anastigmat lenses of suitable focal length may be fitted, but the best results will be secured by using the lenses listed with the camera on page 49. By removing the stereo partition and replacing the stereo lenses with a single lens, the camera can be used to excellent advantage for 5 x 7 work.







## CIRKUT CAMERAS AND OUTFITS

**T**HESE instruments make a continuous panoramic picture on Eastman daylight loading roll film. A motor driven mechanism revolves the camera on the tripod top, and at the same time draws the film across an exposure slot. This makes it possible to secure a picture embracing any angle of view and of any length within the capacity of the roll film used.

The Cirkut opens up innumerable opportunities for unusually pleasing pictorial effects, and there is probably no camera that has proved as great a source of profit to the photographer making outdoor views and groups.

Cirkut Cameras are made in three sizes, Nos. 5, 10 and 16, for film 5, 6, 8, 10, 12 and 16-inch widths. Any length of negative up to about 12 feet with the No. 10, and 18 feet with the No. 16, may be made, the length of the negative being determined by the focal length of the lens used and the distance the camera revolves on the tripod. A scale is provided by means of which the operator can determine the length of film required for any exposure, and a register on







CIRKUT CAMERAS AND  
OUTFITS—Continued

the top of the film box indicates the amount of film consumed and that still remaining unexposed. There is also a device for perforating the film after each exposure.

An entirely new Cirkut Camera has been provided for the amateur or professional photographer requiring a panoramic camera for pictures not exceeding 5 inches in width. This is the new No. 5 Cirkut Camera, which will make a negative 5 inches wide and of any length up to 42 inches.

This little instrument is constructed on the same principle and with the same careful attention to detail as the larger cameras, and will produce results equal in quality to those secured with the larger cameras and outfits. Unlike the other Cirkuts the No. 5 is self-contained; it has no extra film attachment, the mechanism for operating the camera being contained in the body of the instrument. A pocket at the side of the camera is provided to contain the gear wheels and winding key.

Cirkut Outfits are supplied in two sizes, No. 6 and No. 8, the former being the 5x7 Cycle Graphic to which is fitted the Cirkut Attachment, while the No. 8 is an attachment fitted to a 6½ x 8½ Cycle Graphic. The No. 6 Cirkut Outfit takes 6½-inch film and negatives up to 6 feet long may be made, and with the No. 8 Outfit a negative 8 inches wide and any length up to 8 feet may be made. By removing the Cirkut Attachments, the cameras supplied with the Nos. 6 and 8 Cirkut Outfits may be used with plates in the usual manner. Only Eastman Daylight-loading Film is used. The construction of the camera allows of the most careful focusing, as the image can be seen on the ground glass not alone full width but full length of the picture.

The Cycle Graphic Cameras as supplied with Cirkut Outfits Nos. 6 and 8 are fully described on pages 43 to 45.

THE PRICE

Including Sole Leather Carrying Case

Cirkut Cameras fitted with Turner-Reich Convertible Anastigmat Lens, Series II, and Shutter . . . . .	No. 10	\$310.00	No. 16	\$480.00
Cirkut Camera, complete, fitted with Special Convertible Lens . . . . .	No. 5	120.00		
Cirkut Panoramic Outfits, complete, with Lens and Shutter . . . . .	No. 6	132.50	No. 8	197.00

NOTE—A special Cirkut catalogue contains full information regarding Cirkut apparatus, copy of which will be mailed on request.



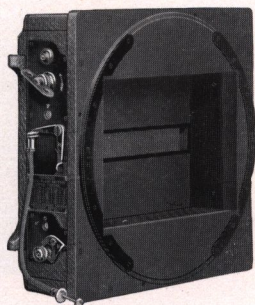




## THE GRAFLEX FOCAL PLANE SHUTTER

Folmer's Patent, February 5, 1907, and April 21, 1908

**F**OR ultra rapid photography, the Graflex Shutter presents numerous advantages over shutters working in front of, between or behind the lens. To secure successful negatives of rapidly moving objects, such as horse and automobile races, railroad trains, football games, base ball contests, etc., there is no style of shutter that can equal the Graflex. And while constructed primarily for high-speed work, it is also adapted for slow automatic exposures and time exposures of any duration. Its position immediately in front of the sensitive plate or film insures the distribution of light with equal intensity upon every portion of the sensitized surface. In addition, the principle upon which it is constructed not only gives the maximum of speed, but at the same time the plate receives a greater volume of light in a given time than with any other type of shutter.



In comparing the Focal Plane Shutter with the between-lens type of shutter, which is most commonly in use, particular stress should be laid upon the fact that with the Focal Plane Shutter there is absolutely no diminishing of the volume of light passing through the lens, in other words the full efficiency of the lens aperture used is maintained throughout the exposure.

### SPECIFICATIONS

	4 x 5	5 x 7	6½ x 8½	8 x 10
Dimensions . . . .	6¼ x 6¼ x 1¾	8¾ x 8¾ x 1¾	10 x 10 x 1¾	11½ x 11½ x 2
Weight . . . . .	16 oz.	26 oz.	32 oz.	40 oz.

### THE PRICE

Graflex Focal Plane Shutter, leather covered, to match Cycle Graphic Cameras . .	4 x 5	5 x 7	6½ x 8½	8 x 10
	\$23.00	\$25.00	\$28.00	\$30.00







## GRAFLEX ROLL HOLDER

### 1915 MODEL

**T**HE Graflex Roll Holder 1915 model takes the new Eastman Graflex Film, and will interchange with the Plate Holders on Graflex Cameras.

The Holder is substantially made and occupies the space of two Plate Holders. It can be easily loaded in daylight by raising the hinged back and removing the spool carrying mechanism, when the



black paper on the film spool is passed over the face of the carrier to the receiving spool. A retarding ratchet is provided whereby the film may be drawn absolutely flat after it is in position for exposure, affording a true recording plane. The Graflex Roll Holder is fitted with a dark slide, which permits the removal of the Holder from the camera before the entire roll has been exposed, without injuring the film.

Film for the Graflex Roll Holder is designated by a number which is stamped on the inside back cover of the Roll Holder, as well as on the carton containing the Film.

#### GRAFLEX ROLL HOLDERS

##### 1915 MODEL

2½ x 3½	For Graflex Roll Holder Film No. 50	\$ 8.00
3½ x 4½	For Graflex Roll Holder Film No. 51	9.00
3½ x 5½	For Graflex Roll Holder Film No. 52	10.00
4 x 5	For Graflex Roll Holder Film No. 53	10.00
5 x 7	For Graflex Roll Holder Film No. 54	11.00

Graflex Roll Holders will fit Graflex Cameras only.

#### EASTMAN GRAFLEX FILM

No. 50	3½ x 2½	6 Exposures	\$ .20
No. 51	4½ x 3½	6 Exposures	.35
No. 52	5½ x 3½	6 Exposures	.40
No. 53	5 x 4	6 Exposures	.45
No. 54	7 x 5	6 Exposures	.80

To avoid error order film by number.

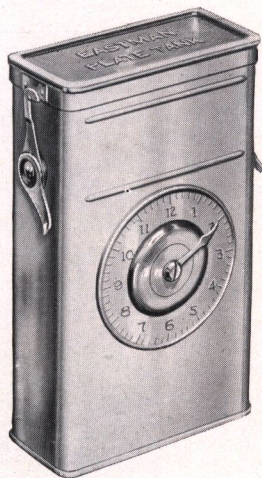






## EASTMAN PLATE TANK

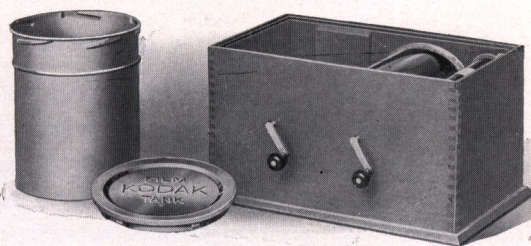
**T**O secure the best results, Graflex negatives on glass plates should be developed in the Eastman Plate Tank. This tank consists of a heavy metal solution cup with a tight-fitting cover, permitting the tank to be reversed during development, a cage for holding the plates, and a simple loading device. Eastman Plate Tanks are supplied to accept plates made with all Graflex Cameras for which plate holders are provided.



### THE PRICE

Eastman Plate Tank, 4 x 5, for 4 x 5, 3½ x 5½,  
3½ x 4½ and 2½ x 3½ plates . . . \$4.00  
Eastman Plate Tank, 5 x 7 . . . . . 5.00

## KODAK FILM TANK



**K**ODAK Film Tanks of standard sizes will accept the film spools for the Graflex Roll Holder, as well as those used by the 1A and 3A Graflex.

### THE PRICE

3½-inch Kodak Film Tank, for 3½ x 5½ 3A Film, 2½ x 4½ 1A Film and  
3½ x 2½ Eastman Graflex Film No. 50 . . . . . \$5.50  
5-inch Kodak Film Tank, for 4½ x 3½ Eastman Graflex Film No. 51 . . . . . 6.50  
7-inch Kodak Film Tank, for 5½ x 3½ Eastman Graflex Film No. 52,  
5 x 4 Eastman Graflex Film No. 53 and 7 x 5 Eastman Graflex Film  
No. 54 . . . . . 8.00



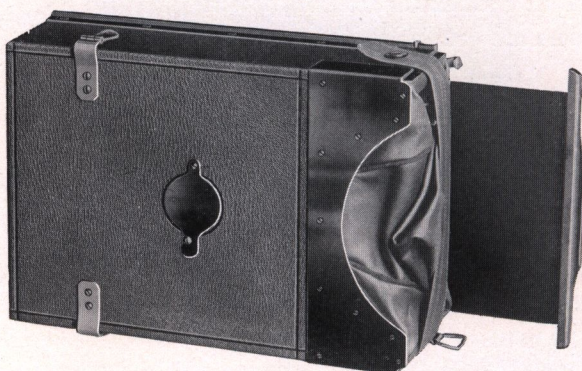




## THE GRAFLEX MAGAZINE PLATE HOLDER—MODEL A

WITH INDEPENDENT DARK SLIDE

**T**HE Graflex Magazine Plate Holder is designed to carry twelve glass plates or cut films, each in a separate metal septum. Each septum is numbered on the back, the number appearing at a ruby window in the back of the magazine as each exposure is made. When a plate is exposed the septum is drawn into a leather bag attached to the end of the magazine, by means of a brass rod, and re-inserted by hand into the rear of the magazine holder.



Each septum has a depression in the back which serves as a spring to force the plate forward into focus regardless of its thickness. The serial numbers are placed in these depressions. Springs at the back of the magazine force the septums forward, and bring the plate in position for exposure into exact register. It is not necessary to expose all the plates before development, as one or more plates can be removed at any time in the dark room. The Magazine Holder may be removed from the camera at any time, as the dark slide effectually prevents the light from reaching the plates or films.

### SPECIFICATIONS

	2¼ x 3¼	3¼ x 4¼	4 x 5	3¼ x 5½	5 x 7
Dimensions	5 x 3½ x 2½	6½ x 2½ x 4½	7½ x 2½ x 5	7½ x 2½ x 4½	9½ x 2½ x 6½
Weight	14 oz.	1½ lbs.	2 lbs.	2 lbs.	3½ lbs.

### THE PRICE

2¼ x 3¼, each	\$11.00
3¼ x 4¼, each	13.50
4 x 5, each	14.50
3¼ x 5½, each	15.00
5 x 7, each	16.00







## THE GRAFLEX PLATE HOLDER

Folmer's Patent, October 25, 1904

**T**HE Graflex Holder is simple, strong, practical and absolutely lightproof. It is constructed of well-seasoned, selected cherry, handsomely finished in black, and fitted with the new spring finger cut-off, which excludes all light and prevents fogging of plates when drawing or replacing slides. The holder is grooved instead of tongued, affording increased thickness and strength without increase of space occupied. The Graflex Holder is loaded by inserting one end of the plate under the rabbet when the slide is withdrawn, and placing the other end against the septum. With the thumb and forefinger draw the two sliding locks together. These locks hold the plate securely, and also do away with the side and end rabbets, allowing the full width and length of the plate to be exposed, with the exception of less than  $\frac{1}{16}$  of an inch at one end.



Graflex Plate Holder Showing Cut-off

Graflex Plate Holders are fitted with a new special slide that will not warp, buckle or collect dust like hard rubber.

### THE PRICE

2½ x 3½, each \$1.50 3½ x 4½, each \$2.50 4 x 5, each \$2.50  
3½ x 5½, each \$2.50 5 x 7, each \$3.50

## THE GRAPHIC PLATE HOLDER

Folmer's Patent, October 25, 1904

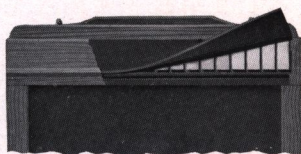
**G**RAPHIC Plate Holders are the most practical holders in the market. They are compact, yet strong, being made of selected, well-seasoned cherry and fitted with our new spring finger cut-off, which prevents the entrance of light and fogging of plates when drawing or replacing slides. Springs on either side of the septum keep the plates in *absolute register*.

To load the Graphic Holder one end of plate is inserted under the rabbet where the slide is withdrawn, and the other end placed against the septum, being held in place by the two sliding locks at opposite end of holder.

The locks do away with the side and end rabbets, allowing the full width and length of the plate to be exposed with the exception of less than  $\frac{1}{16}$  of an inch at one end.

Graphic Plate Holders are fitted with mat finish slides, of a special material, that will not warp, crack, buckle or collect dust like hard rubber.

**THE PRICE**—3½ x 4½, each \$1.25 4 x 5, each \$1.25 3½ x 5½, each \$1.25 5 x 7, each \$1.50  
6½ x 8½, each \$2.00 8 x 10, each \$2.25



Section of Graphic Plate Holder Showing Cut-off

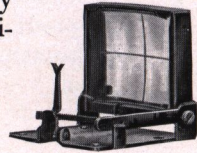






## GRAPHIC SIGHT FINDER

**T**HESE finders are so constructed that they may be readily attached to the camera. Horizontal and vertical centering lines, engraved on the lens, make it possible to exactly center the object by means of vertical sight bar at the back of the bed plate. When the lens frame on the finder is folded down, the bar automatically drops into position. This finder is thoroughly effective and occupies but little space.



### THE PRICE

3½ x 4½ . \$3.00    3½ x 5½ . \$3.50    4 x 5 . \$3.50    5 x 7 . \$4.75

## GRAFLEX COLOR PLATE HOLDER

**G**RAFLEX Color Plate Holders are designed especially for color photography. They can be used either for Autochrome Plates or with other color plates, which are made through a lined screen. When using Autochrome Plates a sheet of black cardboard one thirty-second of an inch in thickness should be placed in the holder in order that the sensitized surface of the plate will be brought into correct register. When making photographs on color plates, which are exposed through a lined screen, it is unnecessary to use the cardboard backing as the thickness of the glass on which the plates are coated brings the sensitized surface into the correct position. Receding springs compensate for glass of varying thickness, which makes this holder suitable for any kind of color plate. Graflex Color Plate Holders are indispensable to those engaged in color photography as they eliminate all uncertainty as to whether the subject is correctly focused. Graflex Color Plate Holders can be used only with Graflex Cameras to which the regular Graflex Plate Holders are adjustable. These holders are constructed of selected cherry, ebonized and finished in the same manner as the Graflex Holder.



### THE PRICE

2½ x 3½, each . . . . .	\$4.00	4 x 5, each . . . . .	\$5.00
3½ x 4 (Lantern Slide), each	4.25	3½ x 5½, each . . . . .	5.50
3½ x 4½, each . . . . .	4.50	5 x 7, each . . . . .	6.00



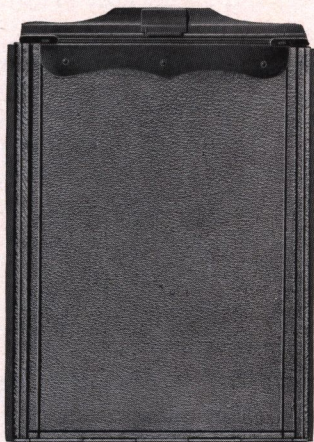




## GRAFLEX FILM PACK ADAPTER

### MODEL A—With Slide

**T**HE Graflex Film Pack Adapter is covered with the same fine grade of leather that is used on the Graflex, and can be used with all the Graflex Cameras except the 1A and 3A, which instruments use roll films exclusively. The Graflex Film Pack Adapter takes the standard Premo Film Pack, and on all the Graflex Cameras, except the Press, may be loaded without removing from the camera. On the Press Graflex the adapter is inserted in the same manner as a plate holder into a spring actuated back. The entire operation of loading and unloading is effected in broad daylight. Exposures are made with the film pack as usual, but the adapter slide may be inserted and the adapter removed in daylight at any time.



#### THE PRICE

Graflex Film Pack Adapter, 2¼ x 3¼	3¼ x 4¼	4 x 5	3¼ x 5½	5 x 7	
Model A . . . . .	\$3.50	\$4.50	\$5.00	\$5.50	\$7.50

## CARRYING CASE FOR CROWN TRIPODS

**F**OR convenience in carrying the Crown Tripod, we supply a solidly constructed carrying case with a long compartment for the tripod legs, and a smaller compartment attached to the side for the top. These cases are supplied in either sole leather or imitation walrus Fabrikoid.

#### THE PRICE

No. 1 Imitation Walrus Fabrikoid	\$4.00	No. 1 Sole Leather . .	\$5.25
No. 2 Imitation Walrus Fabrikoid	4.50	No. 2 Sole Leather . .	6.00
No. 3 Imitation Walrus Fabrikoid	5.00	No. 3 Sole Leather . .	7.25
No. 4 Imitation Walrus Fabrikoid	5.50	No. 4 Sole Leather . .	8.00







## THE CROWN TRIPOD

Folmer's Patent, June 23, 1903

**T**HE Crown is a four-section telescopic folding tripod, absolutely rigid, quickly set up and readily adjusted for height.

It is made of selected straight-grained cherry, soaked in an oil bath for ten days before being finished. The wood is then rubbed down and shellacked. This treatment renders it extremely tough and practically waterproof.

For carrying, the lower sections telescope into the third and the upper section folds back upon it, making it very compact.

All binding screws on lower sections of this tripod are "upset" and cannot be lost. Taper pins in the ear pieces of the head fit snugly into metal tipped sockets of the legs, preventing loose joints and side play.

Expansion brackets in the upper section make it impossible for the legs to be detached from the head until brackets are folded.

The No. 1, when closed, measures  $16\frac{1}{4}$  inches and weighs, with top, 36 ounces. When extended to its full capacity, it stands  $4\frac{1}{3}$  feet high.

The No. 2, closed, measures  $17\frac{1}{4}$  inches long and weighs, with top, 65 ounces. When extended, it has a height of  $4\frac{2}{3}$  feet.

The No. 3, closed, measures 20 inches long and weighs, with top, 70 ounces. When extended, it has a height of  $5\frac{1}{3}$  feet.

The No. 4, closed, measures  $19\frac{1}{2}$  inches long and weighs, with top, 84 ounces. When extended, it has a height of  $5\frac{1}{2}$  feet.

### THE PRICE

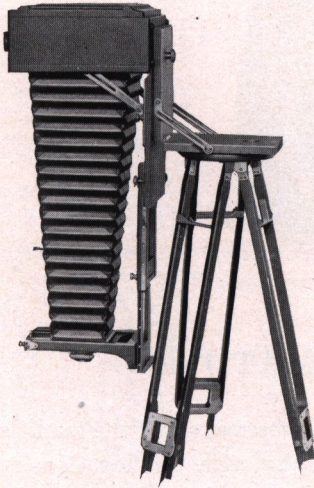
No. 1 Crown Tripod with 4-inch top . . . . .	\$7.00
No. 2 Crown Tripod with 6-inch top . . . . .	7.50
No. 3 Crown Tripod with 6-inch top . . . . .	9.00
No. 4 Crown Tripod with $6\frac{1}{2}$ -inch top . . . . .	9.50







## CROWN TILTING TRIPOD TOP



**T**HE Crown Tilting Tripod Top is designed for use with the Crown Tripods. By the aid of this attachment the camera may be tilted at any angle upward or downward, and also reversed for vertical pictures without changing the back or removing it from the tripod. Its portability and compactness will at once commend it to the photographer, especially for out-of-door use. The top is perfectly rigid, no matter what position it may occupy.

### THE PRICE

Crown Tilting Tripod Top No. 1 . .	\$2.50
Crown Tilting Tripod Top No. 2 . .	3.00
Crown Tilting Tripod Top No. 4 . .	3.75
Professional Tilting Tripod Top . .	7.50

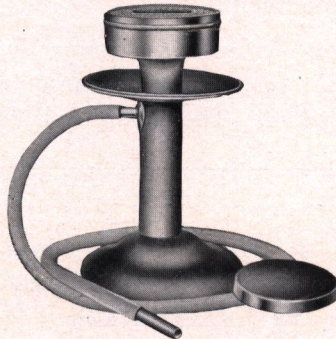
## CROWN FLASH LAMP

For Pure Magnesium Only

**T**HE Crown Flash Lamp is so constructed that the magnesium powder is stored in the body of the lamp and blown up through the center of flame, thoroughly consuming it and producing a powerful light. The head of the lamp is filled with lamp-wick, saturated with alcohol. This gives a large flame, which is very essential in a perfect flash lamp. The head of the lamp is removable in order to fill the magazine with magnesium powder. A safety disc is provided, to protect the hand when using the lamp. Tube and mouth pieces are also furnished.

The double spreader will not clog up and is more powerful than any other lamp of double its cost now on the market. Long or short flashes can be made.

The Crown is the perfection of flash lamps, being safe, economical and reliable. It is finished in polished nickel and presents a very handsome appearance. This lamp is intended for use with pure magnesium only, and explosive flash-powder of any kind must not be used with it.



**THE PRICE**—Crown Flash Lamp . . . . . \$1.50







## KODAK ANASTIGMAT *f*.4.5

**T**HE Kodak Anastigmat Lens *f*.4.5 possesses all of the qualities essential to high speed photography with Graflex Cameras or the Graflex Focal Plane Shutter, and is also especially suitable for home portraiture, groups, landscapes and other varied pictorial subjects.

The excellent definition and uniform illumination throughout the area of the perfectly flat field, obtainable with the full aperture *f*.4.5, fully meets the requirements of the amateur and professional photographer, who must frequently work under unfavorable light conditions.

The lenses are compactly mounted and provided with Iris Diaphragm, actuated by an outer ring bearing the numbers of the stop system. The mounting is finished throughout in black lacquer.

No.	Size of Plate covered with stop <i>f</i> .4.5. Inches	Equivalent Focus Inches	PRICE
			Lens in barrel with Iris Diaphragm
30	2½ x 3½	4½	\$31.00
31	3½ x 4½	5½	35.00
32	4 x 5	6½	40.50
33	3½ x 5½	7½	50.00
34	5 x 7	8¾	62.00

NOTE.—All the sizes of the Kodak Anastigmat Lens *f*.4.5 listed, will not be immediately available. The No. 30 (2½ x 3½) and No. 33 (3½ x 5½) will be the first sizes manufactured. The other lenses of the series will follow as quickly as the prevailing conditions will warrant.







## B. & L. KODAK ANASTIGMAT *f.6.3*

No.	Size of Plate covered with Stop <i>f.6.3</i> Inches	Equivalent Focus Inches	PRICE	
			Lens in Barrel	Lens in Volute Shutter
1	2½ x 4½	4½	\$22 00	\$42 00
2	3¼ x 4¼	5	23 50	43 50
3	4 x 5	6½	24 50	44 50
4	3¼ x 5½	6¾	30 00	50 00
5	5 x 7	8¼	41 50	63 00
6	6½ x 8½	10	56 00	77 50

## BAUSCH & LOMB TESSAR, *Series Ic, f.4.5*

No.	Size of Plate covered with Stop <i>f.4.5</i> Inches	Equivalent Focus Inches	PRICE	
			Lens in Barrel with Iris Diaphragm	Lens Fitted with Volute Shutter
13	2½ x 3½	4½	\$ 36 50	\$ 56 50
14	3¼ x 4¼	5½	41 00	61 00
15	4 x 5	6½	48 00	69 50
15a	5 x 7	7½	58 50	80 00
16	5 x 8	8½	73 00	96 00
17	6½ x 8½	9¾	117 00	140 00
18	8 x 10	11½	165 00	.....
18a	10 x 12	14½	212 00	.....
19	11 x 14	15¾	255 00	.....
20	14 x 17	19¼	365 00	.....

## BAUSCH & LOMB PROTAR, *Series VIIa*

No.	Size of Plate covered with Full Aperture Inches	Equivalent Focus of Single Protars, Ins.		Combined Equiva- lent Focus Inches	Speed <i>f</i>	PRICE	
		Front Lens	Back Lens			Lens in Barrel with Iris Diaphragm	Lens Fitted with Aluminum Volute Shutter
4	4 x 5	8¾	8¾	5½	6.3	\$ 57 00	\$ 77 00
5	4½ x 6½	11¾	8¾	5¾	7.	62 00	82 00
6	4½ x 6½	13¾	8¾	6½	7.7	70 00	91 50
7	4½ x 7½	11¾	11¾	6¾	6.3	67 00	87 00
8	5 x 7	13¾	11¾	7	7.	75 00	96 50
10	5 x 8	13¾	13¾	7½	6.3	82 00	103 50

## ON FITTING LENSES

While we list Graflex Cameras without lenses, we can not be responsible for any outfit leaving our factory incomplete. The best results cannot be secured unless the lens is accurately fitted, and so mounted that the flange is absolutely parallel to the sensitive plate or film. Therefore, in justice to ourselves, and for the purpose of avoiding errors, our guarantee only applies to cameras that are shipped from our factory complete with lenses attached.

Wide Angle Lenses cannot be used with Graflex Cameras.







## TERMS

**A**LL quotations are net and f. o. b. Rochester, but owing to present conditions prices are subject to change without notice. We make no charge for packing, and guarantee safe arrival when forwarded by express. Shipments by mail are always at the risk of the purchaser and postage must invariably be added to the cost.

Remittance can be made by draft on New York, postoffice or express money order, or registered letter. Personal checks from parties unknown to us will delay shipment of goods until check can be collected. Ten cents must be added to all personal checks to cover cost of exchange.

For the convenience of our customers, we suggest they purchase through regular dealer in photographic goods, as they can thus save time and transportation charges.

**FOLMER & SCHWING DEPARTMENT**

EASTMAN KODAK COMPANY

ROCHESTER, N. Y.







**Almer Coe & Company**  
**OPTICIANS**

THREE STORES

**105 N. Wabash Ave.**      **82 E. Jackson Blvd.**

**6 South La Salle St.**

**CHICAGO, ILL.**



# PRICE CHANGES

## Graflex Catalogue

EFFECTIVE JAN. 14, 1919

PRICES SUBJECT TO CHANGE WITHOUT NOTICE

### Page 8

1A Graflex without lens.....	\$72.00
With Kodak Anastigmat Lens, f.4.5, No. 31.....	107.00
With B. & L. Kodak Anastigmat Lens, f.6.3, No. 2.....	95.50
With B. & L. Tessar Lens, Series Ic, f.4.5, No. 14.....	113.00
Leather Case for 1A Graflex.....	7.50
Extra lens boards, each.....	.50

### Page 10

3A Graflex without lens.....	85.00
With Kodak Anastigmat Lens, f.4.5, No. 33.....	135.00
With B. & L. Kodak Anastigmat Lens, f.6.3, No. 4.....	115.00
With B. & L. Tessar Lens, Series Ic, f.4.5, No. 15a.....	143.50
Leather Case for 3A Graflex.....	9.50
Extra lens boards, each.....	.60

### Page 17

	3¼ x 4¼	4 x 5	5 x 7
Auto Graflex without lens.....	\$60.00	\$70.00	\$90.00
	No. 31	No. 32	No. 34
With Kodak Anastigmat Lens, f.4.5.....	95.00	110.50	152.00
	No. 2	No. 3	No. 5
With B. & L. Kodak Lens, f.6.3.....	83.50	94.50	131.50
	No. 14	No. 15	No. 16
With B. & L. Tessar, Series Ic, f.4.5.....	101.00	118.00	163.00
Leather case for camera and roll holder.....	8.50	10.00	14.50
Leather case for camera and magazine plate holder.....	9.50	11.00	15.50
Extra Lens board, each.....	.60	.60	.75

### Page 18

Auto Graflex Junior without lens.....	42.00
With Kodak Anastigmat Lens, f.4.5, No. 30.....	73.00
With B. & L. Kodak Anastigmat Lens, f.6.3, No. 1.....	64.00
With B. & L. Tessar, Series Ic, f.4.5, No. 13.....	78.50
Leather case for camera and plate holder or roll holder.....	7.00
Leather case for camera and magazine plate holder.....	8.50

### Page 21

Revolving Back Graflex Junior, without lens.....	70.00
With Kodak Anastigmat Lens, f.4.5, No. 32.....	110.50
With B. & L. Kodak Anastigmat Lens, f.6.3, No. 3.....	94.50
With B. & L. Tessar Lens, Series Ic, f.4.5, No. 15.....	118.00
Leather case for camera and plate holder or roll holder.....	7.50
Leather case for camera and magazine plate holder.....	9.00

### Page 23.

	3¼ x 5½	5 x 7
Compact Graflex without lens.....	\$80.00	\$105.00
	No. 33	No. 34
With Kodak Anastigmat Lens, f.4.5.....	130.00	167.00
	No. 4	No. 5
With B. & L. Kodak Anastigmat Lens.....	110.00	146.50
	No. 15a	No. 16
With B. & L. Tessar, Series Ic.....	138.50	178.00
Leather Case for camera and plate holder or roll holder....	9.50	13.50
Sole leather case for camera and magazine plate holder....	10.50	14.50
Extra lens boards, each.....	.60	.75



**Page 24**

	3¼ x 4¼	4 x 5
Telescopic R. B. Graflex without lens.....	\$95.00	\$105.00
With Kodak Anastigmat Lens, f.4.5.....	No. 32 135.50	No. 33 155.00
With B. & L. Kodak Anastigmat Lens, f.6.3.....	No. 3 119.50	No. 5 146.50
With B. & L. Tessar, Series Ic, f.4.5.....	No. 15 143.00	No. 16 178.00
Leather case for camera and roll holder.....	9.75	12.00
Leather case for camera and magazine plate holder.....	10.50	13.00
Extra lens boards, each.....	.60	.70

**Page 26**

	3¼ x 4¼	4 x 5
Revolving Back Auto Graflex, without lens.....	\$105.00	\$120.00
With Kodak Anastigmat Lens, f.4.5.....	No. 33 155.00	No. 34 182.00
With B. & L. Kodak Anastigmat Lens.....	No. 5 146.50	No. 6 176.00
With B. & L. Protar Lens, Series VIIa.....	No. 10 187.00	
With B. & L. Tessar Lens, Series Ic.....	No. 15a 163.50	No. 17 237.00
Leather case for camera and roll holder.....	11.00	13.50
Leather case for camera and magazine plate holder.....	12.00	14.50
Extra lens boards.....	.60	.70

**Page 30**

Press Graflex without lens.....	125.00
With Kodak Anastigmat Lens, f.4.5, No. 34.....	187.00
With B. & L. Kodak Anastigmat Lens, f.6.3, No. 5.....	166.50
With B. & L. Tessar Lens, Series Ic, f.4.5, No. 16.....	198.00
Leather case for camera and plate holder or roll holder.....	18.00
Leather case for camera and magazine plate holder.....	19.00
Extra lens boards, each.....	.75

**Page 32**

Home Portrait Graflex without lens.....	150.00
With B. & L. Tessar, Ic, f.4.5, No. 17.....	267.00
With B. & L. Tessar, Ic, f.4.5, No. 18.....	315.00
Leather case for camera and roll holder.....	18.00
Leather case for camera and magazine plate holder.....	20.00
Extra lens boards, each.....	.80

**Page 35**

Stereo Auto Graflex without lenses.....	160.00
With matched pair B. & L. Kodak Anastigmat Lenses, f.6.3, No. 3....	209.00
Leather case for camera and roll holder, with lock and key.....	12.50
Leather case for camera and magazine plate holder, with lock and key.....	13.50
Extra lens boards, each.....	2.00

**Page 38**

No. o Graphic Camera with B. & L. Kodak Anastigmat Lens, f.6.3..	45.00
Sole leather carrying case.....	5.00

**Page 39**

F. & S. Finger-Print Camera complete with lens, shutter, two batteries, ten lamps and one double plate holder, 2¼ x 3¼.....	38.00
Extra batteries No. 789, each.....	.90
Extra Mazda Miniature Lamps, each.....	.25
Extra Mazda Miniature Lamps, per carton of ten.....	2.50

**Page 41**

Graflex Enlarging Camera, 8 x 10, including one Bromide Paper Holder	34.00
Extra lens board.....	.40

**Page 42**

Naturalists' Graflex, 4 x 5, without lens.....	160.00
Leather case for camera and roll holder or magazine plate holder.....	24.00



Page 45

	4 x 5	5 x 7	6½ x 8½	8 x 10
Revolving Back Cycle Graphic with Rapid Rectilinear Lens.....	\$68.00	\$85.00	\$105.00	\$135.00
With B. & L. Kodak Anastigmat Lens, No. 3 f.6.3, and Volute Shutter.....	106.80	141.80	170.70	—
With B. & L. Protar Lens, Series VIIa, and Volute Shutter.....	149.30	182.30	—	—
Extra lens boards, each.....	.45	.50	.60	.60

Page 46

	3¼ x 4¾	4 x 5	3¼ x 5½	5 x 7
Speed Graphic without lens.....	\$55.00	\$58.00	\$60.00	\$70.00
With Kodak Anastigmat Lens, f.4.5.....	No. 31 90.00	No. 32 98.50	No. 33 110.00	No. 34 132.00
With B. & L. Kodak Anastigmat Lens, f.6.3 .....	No. 2 78.50	No. 3 82.50	No. 4 90.00	No. 5 111.50
With B. & L. Tessar, Series Ic, f.4.5.....	No. 14 96.00	No. 15 106.00	No. 15a 118.50	No. 16 143.00
Sole leather carrying case with lock and key .....	8.50	9.00	9.00	11.50
Extra lens board.....	.45	.60	.60	.70

Page 49

Stereoscopic Graphic without lenses.....	\$100.00
With matched B. & L. Kodak Anastigmat Lenses, No. 3, f.6.3.....	149.00
With matched B. & L. Protar Lenses, Series V, No. 2.....	147.00
Leather carrying case.....	12.00
Extra lens boards, each.....	.75

Page 52

No. 5 Cirkut Camera, complete.....	125.00
No. 10 Cirkut Camera, without lens.....	245.00
With Turner-Reich lens, Series II, No. 4.....	328.15
No. 16 Cirkut Camera, without lens.....	375.00
With Turner-Reich lens, Series II, Special.....	539.15
No. 6 Cirkut Outfit, with R. R. lens and shutter.....	175.00
With Turner-Reich lens, Series II, No. 2.....	222.80
No. 8 Cirkut Outfit, with R. R. lens and shutter.....	240.00
With Turner-Reich lens, Series II, No. 4.....	311.35

**CIRKUT PARTS WHEN SOLD SEPARATELY**  
**CIRKUT CAMERA PARTS**

	No. 5	No. 10	No. 16
Cirkut Camera with lens, but without Aluminum Tripod Top, Tripod or Carrying Case.....	\$93.00		
Cirkut Film Box, only.....		\$124.00	\$175.00
Cirkut Aluminum Tripod Head.....	12.00	21.00	25.00
Set No. 2 Crown Tripod Legs.....	6.00		
Set Professional Tripod Legs.....		13.50	13.50
Sole Leather Case for complete No. 5 Outfit....	13.50		
Sole Leather Case for Cirkut Camera only.....		15.00	18.00
Sole Leather Case for Cirkut Film Box.....			15.00
Keratol Case for Aluminum Tripod Top, Tripod Legs and Gear Box.....		10.00	12.00

**CIRKUT OUTFIT PARTS**

	No. 6	No. 8
Cirkut Attachment, only.....	\$60.00	\$100.00
Cirkut Aluminum Tripod Head.....	13.00	17.00
No. 4 Crown Tripod with 6½ in. top.....	10.50	10.50
Wooden Gear Box.....	1.50	1.50
Keratol Case for Cirkut Outfit to hold Attachment, Aluminum Tripod Head, Tripod and Gear Box.....	5.00	6.00



When customers have lenses of suitable focal length which they wish fitted to Cirkut Cameras or Outfits, it is necessary for us to have the cameras and lenses in our possession so that the fitting can be accurately done. A charge will be made for this work including the gears, focusing scales and photographic tests.

#### Page 53

	4 x 5	5 x 7	6½ x 8½	8 x 10
Graflex Focal Plane Shutter, leather covered, to match Cycle Graphic Cameras	\$25.00	\$27.00	\$30.00	\$32.00

#### Page 54

Graflex Roll Holder, No. 50, 3¼ x 2¼	9.50
" " " No. 51, 4¼ x 3¼	10.00
" " " No. 52, 5½ x 3¼	11.00
" " " No. 53, 5 x 4	11.00
" " " No. 54, 7 x 5	12.00

#### Page 56

Graflex Magazine Plate or Cut Film Holder, Model A, 2¼ x 3¼, each	12.00
" " " " " " " " " 3¼ x 4¼, each	14.00
" " " " " " " " " 4 x 5, each	15.00
" " " " " " " " " 3¼ x 5½, each	15.50
" " " " " " " " " 5 x 7, each	17.00

#### Page 57

Graphic Plate Holders, 3¼ x 4¼	1.75
" " " " " " " " " 3¼ x 5½	1.75
" " " or Cut Film Holders, 4 x 5	1.75
" " " " " " " " " 5 x 7	2.00
" " " " " " " " " 6½ x 8½	2.50
" " " " " " " " " 8 x 10	2.75
Graflex Plate Holders, 2¼ x 3¼	1.75
" " " " " " " " " 3¼ x 4¼	2.75
" " " " " " " " " 3¼ x 5½	2.75
" " " " " " " " " 4 x 5	2.75
" " " " " " " " " 5 x 7	3.75
" " " Cut Film Holders, 5 x 7	4.00

#### Page 59

Graflex Film Pack Adapter, Model A, 2¼ x 3¼	5.00
" " " " " " " " " 3¼ x 4¼	5.50
" " " " " " " " " 4 x 5	6.00
" " " " " " " " " 3¼ x 5½	6.00
" " " " " " " " " 5 x 7	8.00

#### Page 60

No. 1 Crown Tripod with 4-inch top	8.00
No. 2 " " " 6 " "	8.50
No. 3 " " " 6 " "	10.00
No. 4 " " " 6½ " "	10.50

### CARRYING CASE FOR CROWN TRIPODS

No. 1 Imitation Walrus Fabrikoid	\$4.50	No. 1 Sole Leather	6.00
No. 2 " " " " "	5.00	No. 2 " " "	6.50
No. 3 " " " " "	5.50	No. 3 " " "	8.00
No. 4 " " " " "	6.00	No. 4 " " "	9.00
Carrying Cases for 6 Graflex Holders, 2¼ x 3¼	5.00		
" " " " " " " " " 3¼ x 4¼	5.50		
" " " " " " " " " 3¼ x 5½	6.00		
" " " " " " " " " 4 x 5	6.00		
" " " " " " " " " 5 x 7	7.00		

## FOLMER & SCHWING DEPARTMENT

EASTMAN KODAK COMPANY

ROCHESTER, N. Y.