

PHOTOGRAPHY
by



ENSIGN

A. W. COX
228a BROADWAY
BEXLEYHEATH



ENSIGN
MIDGET
"LARGE"
PRINT



ENSIGN MIDGET
NEGATIVES ENLARGE
TO ALMOST ANY SIZE

Your Photography

MAKE IT SOMETHING WORTH WHILE

Why not make your photography something really worth while?—something that will do you credit—something more than half-a-dozen films exposed on your holiday.

There's a latent spark of creative instinct somewhere in every human being, and what better vehicle for its expression than really beautiful pictures of the places you visit, the friends who visit you, and the multitude of events that go to make your day. Beautiful, well balanced, and well composed snapshots are just as easy to take as poor ones—like everything else it's just a question of a little knowledge of the job.

Cameras were never more compact to carry, simple to handle or more certain in their results than they are to-day, nor has there ever been such a wonderful variety of films of varying emulsions to choose from.

THESE FEW HINTS may help you over the very low stile from slipshod, extravagant snapshotting to good economical and artistic picture making.

CHOOSING YOUR CAMERA.

The choice is wide and largely governed by the amount you wish to spend, but you will be well repaid if you buy the very best you can afford. Choose one you will be able to carry about with you often—you cannot expect to get really interesting pictures if your camera is lying at home most of the time.

MINIATURE CAMERAS—such as the ENSIGN MIDGET and the ENSIGN DOUBLE-8 can be carried everywhere unnoticed and therefore enable you to make pictures at any time. The negatives are printed in standard $2\frac{1}{4} \times 3\frac{1}{4}$ size, at no additional cost, and the results are practically indistinguishable from those secured with larger cameras. They are used extensively as accessory cameras by many experienced photographers who wish to be able to make a photographic record at any moment, but cannot obviously always carry a large camera for the purpose.

BOX CAMERAS. The simplest form of camera and useful for the beginner. They take first-class photographs of subjects within the range of the lens and shutter.

FOLDING CAMERAS. The large variety of this type provides a model for every purse and requirement. The ENSIGN SELFIX is the smallest and most compact, taking standard size $2\frac{1}{4} \times 3\frac{1}{4}$ film. The AUTORANGE has a range-finder coupled to the focussing mechanism which secures absolutely sharp pictures at all distances automatically. This camera is also available with a fast focal plane shutter for speed pictures.

REFLEX CAMERAS. The ideal camera for pictorial and speed work, enables you to compose your picture and see it full size up to the moment of exposure.

CHOICE OF LENS.

Select the widest aperture you can afford—the wider the aperture the more light passed to the film, and the more often you can use your camera in dull light—you can always “stop down” when necessary.

CHOICE OF SHUTTER.

Select the model with the longest range of speeds you can afford—you will often want the long speeds, which are more important than the fast ones.

CHOICE OF FILM.

Very considerable advances have been made during the past few years in the variety and types of film which the amateur may use. Recently “chrome” film, such as the Ensign Ultra-chrome has been made available in popular sizes and adds considerably to the quality of the results. Modern films stand a lot of abuse in the matter of exposure, are very fast and will give well exposed negatives in inferior light when used in conjunction with a large aperture lens. The grain in the emulsion of modern films is also much finer, with the result that granularity in enlargements is practically eliminated.

USEFUL ACCESSORIES

HELP YOU TO MAKE BETTER PICTURES.

COLOUR FILTERS. A Colour Filter used on appropriate subjects will improve your pictures enormously. Colours will be rendered faithfully in their exact relationship to each other, and the addition of clouds, not only to landscapes but also to ordinary snapshots, sometimes improve the pictures out of all recognition. (See page 28).

LENS HOODS. A Lens Hood clipped on to the front of the lens excluding all side light, frequently adds contrast, definition, and brilliance to the picture. (See page 28).

AUTOTIMERS. Possession of an Autotimer enables you to release your shutter automatically and thus include yourself in your picture, not only of groups but also in snapshots. (See page 31).

RANGE FINDERS. Enable you to measure accurately the exact distance of your subject from the camera, thus you will always focus absolutely correctly and obtain pin-point definition in your results. (See page 30).

EXPOSURE METERS. Enable you to obtain absolutely correct exposure in any conditions of light, and whilst as already stated, the “modern film” emulsion will stand considerable abuse in the matter of exposure, nevertheless many subjects are spoilt when exposure is not absolutely right. (See page 29).

TRIPODS. A tripod is a very useful accessory and will enable you to take a "time" or longer exposure and thus obtain a picture which otherwise might be impossible.

SOME SIMPLE RULES TO OBTAIN 100% GOOD RESULTS.

Attention to a few fundamental simple rules, adherence to which will become sub-conscious after a little practice, will considerably improve the quality of your pictures.

POINT OF VIEW. There is always a "best position" from which a subject can be photographed, and it is worth while to "stalk" your subject in order to find out which is the best point from which to take the picture.

BACKGROUNDS. More pictures are spoilt by unsuitable backgrounds than possibly for any other reason. Too often the checkered outline of a brick wall dominates the picture. As much attention should be given to the selection of suitable backgrounds as to the subject itself.

LIGHTING. The best position for the sun or main source of light is from the side, either right or left. If the sun is directly in front shining into the lens the picture will be spoilt altogether. If it is shining directly from the rear the picture will be very flat and lacking in contrast. Pleasing "against the light" pictures can be made by using a sky shade.

HOLDING THE CAMERA. Always hold your camera still, and to assist in eliminating "camera shake" use the fastest reasonable speed for the exposure to be given. If a speeded shutter is available for instance, use 1/50 in preference to 1/25—particularly is this desirable with miniature cameras.

LANDSCAPES. Do not imagine that you can only use your camera on days when the sun is shining. Some of the finest effects can be obtained when the light is not good, providing the right sort of subject is photographed from the right angle. Mist frequently provides a completely new set of subjects. Wet pavements and wet streets produce the most fascinating effects, and night time can be made to provide almost as many subjects as daylight.

PORTRAITS. Close-up portraits require slightly longer exposure. Do not worry your sitter unduly with posing—the best snapshots are always made when the features are animated.

DEVELOPING AND PRINTING TRY DOING IT YOURSELF.

Undoubtedly the most fascinating part of photography is the developing of the film and the production of the print. This is a much more simple matter than many people believe, and by means of one of the many excellent Daylight Developing Tanks and outfits now available, can be carried out in complete daylight. The various photographic processes are very fascinating, and can be a tremendous source of enjoyment.

DEPTH OF FOCUS TABLES

The following tables show the distances in feet between which objects will be sharp when the camera is focussed on various distances and set at various apertures.

FOR 2½×3½ CAMERAS. (Calculated for Ensar f/4.5 100 m/m focus lenses, and generally applicable to all 2½×3½ cameras).

Focus Set At	F 4.5		F 5.6		F 8		F 11		F 16	
	Near	Far	Near	Far	Near	Far	Near	Far	Near	Far
INF.	ft. ins.	ft. ins.	ft. ins.	ft. ins.	ft. ins.	ft. ins.	ft. ins.	ft. ins.	ft. ins.	ft. ins.
25 ft.	50-0	INF.	44-0	INF.	36-0	INF.	29-0	INF.	22-0	INF.
15 ft.	20-0	33-0	19-0	23-0	17-0	44-0	15-0	63-0	13-0	INF.
10 ft.	13-0	17-6	13-0	18-6	12-0	20-0	11-0	23-0	10-0	31-0
7 ft.	9-0	11-0	9-0	11-6	8-6	12-0	8-0	13-0	7-6	15-0
5 ft.	6-6	7-6	6-6	7-8	6-3	8-0	6-0	8-6	5-8	9-0
3.5 ft.	4-9	5-3	4-9	5-4	4-8	5-5	4-6	5-7	4-4	5-10
	3-5	3-8	3-5	3-8	3-4	3-8½	3-3	3-9	3-2	3-11

FOR MINIATURE CAMERAS.

INF.	54-0	INF.	43-0	INF.	30-0	INF.	22-0	INF.	15-0	INF.
35 ft.	21-0	99-0	19-0	180-0	16-3	INF.	13-6	INF.	10-7	INF.
15 ft.	11-9	20-0	11-0	22-0	10-0	29-0	9-0	46-0	7-6	INF.
10 ft.	8-6	12-3	8-3	13-0	7-6	14-9	7-0	18-0	6-0	23-0
7 ft.	6-3	8-0	6-0	8-4	5-9	9-0	5-4	10-0	4-9	12-9
5 ft.	4-7	5-6	4-6	5-7	4-4	6-0	4-1	6-5	3-10	7-4
4 ft.	3-9	4-4	3-8	4-5	3-6	4-7	3-4	4-10	3-2	5-4
3 ft.	2-10	3-2	2-11	3-3	2-9	3-4	2-8	3-5	2-6	3-7

EXPOSURE TABLE

The following table gives a rough idea of the exposures for various subjects and stops, with most popular fast films (not super speed) in mid-day sunshine in May, June and July.

Type of Subject	f/4.5	f/6.3	f/8	f/11	f/16
Average Objects in Foreground. Streets, Outdoor Figures ...	1/400	1/200	1/100	1/50	1/25
Landscapes with Light Foreground. River and Beach ...	1/800	1/400	1/200	1/100	1/50
Sea, Clouds and Sky ...	—	—	1/1000	1/600	1/300
Heavy Foregrounds, e.g., Dark Trees, Doorways, Groups ...	1/200	1/100	1/60	1/30	1/15
Under Trees, Woods ...	1/30	1/15	1/10	1/5	1/2
Portrait in Average Well-lighted Room ...	1/15	1/8	1/4	½	1

Note—Bear in mind that modern roll films, while of greater speed, also resist the effect of over-exposure. When in doubt, a longer exposure may therefore be given.

In weather other than bright sunshine the above exposures are multiplied as follows:—

Bright diffused light, the sun behind a cloud ...	×	1½
Light clouds over the whole sky, but light able to cast a visible shadow ...	×	2
Heavy clouds over the whole sky ...	×	3
Very dull. Whole sky covered heavy clouds ...	×	4

H. & D. & SCHEINER EMULSION SPEEDS

The following is an approximate guide as given in the 1935 British Journal Almanac.

H. & D.	240	507	803	1309	2700	3500	4400	5600
Scheiner	16	19	21	23	26	27	28	29

ENSIGN—101 YEARS IN THE SERVICE OF PHOTOGRAPHY AND OPTICS

*"You don't
notice it
in your
pocket"*



THE BASIC IDEA OF THE ENSIGN MIDGET

The ENSIGN MIDGET is not just an ordinary camera made small—it is something much more than that—it is the outcome of a great idea—and like all great ideas it is an extremely simple one. Briefly the idea was this—to design a camera so small and light and particularly so thin, that it could be carried always—as part of one's everyday wear—at the same time a camera at a reasonable price giving first-class results of reasonable size.

The ENSIGN MIDGET fulfils these requirements one hundred per cent.—it is small, thin, and completely unobtrusive in pocket or handbag—and it makes negatives which can easily be enlarged up to 15 × 12 inches and larger. The ENSIGN MIDGET is truly everybody's camera—whether or not they already possess one—no longer need the cry be heard, "If only I had had my camera "

**"A CAMERA TO BE
WORN ALWAYS"**



*"Always plenty
of room for an
ENSIGN
MIDGET in
your handbag."*

ENSIGN MIDGET CAMERAS

THE PERFECT MINIATURE CAMERA

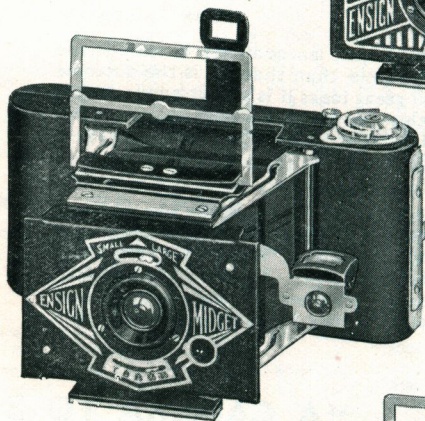
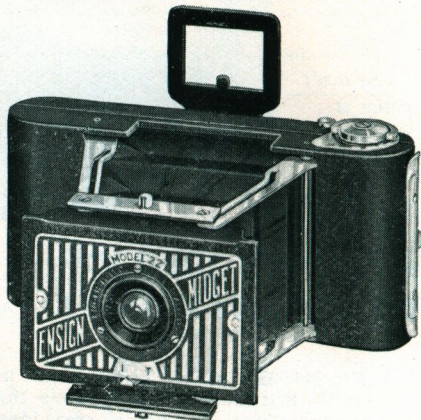
SIZE, $3\frac{1}{2} \times 1\frac{3}{4} \times \frac{11}{16}$ in.

WEIGHT, under 6 oz.

MODEL "22"

With All-Distance Lens
in single speed shutter.

Price ... 22/-



MODEL "33"

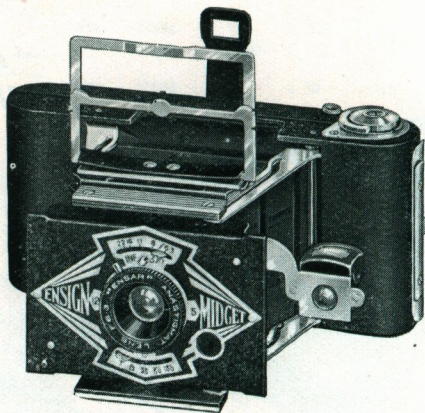
With All-Distance Lens
in 3-speed shutter.

Price ... 33/-

MODEL "55"

With ENSAR f/6.3 Anastigmat in 3-speed shutter.

Price ... 55/-



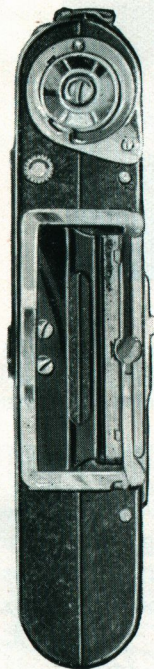
ENSIGN—101 YEARS IN THE SERVICE OF PHOTOGRAPHY AND OPTICS

ENSIGN MIDGET CAMERA

The Camera for everyday "wear."

The ENSIGN MIDGET is a miniature camera, so equipped optically and mechanically, that pictures can be taken with it of almost any subject, as well or better than with many much larger models, so beautifully and precisely made that its negatives will enlarge to almost any size, and in standard $2\frac{1}{4} \times 3\frac{1}{4}$ size are indistinguishable from contact prints.

The ENSIGN MIDGET is a positive delight to handle—a veritable gem of workmanship.



"No wider"
than a
Sixpence
(Actual Size)

MODEL "22"

Fitted with the famous All-Distance lens for pictures at all distances down to 4 ft., mounted in a self-setting shutter giving Time and Instantaneous speeds. Handsomely finished in black silk ripple enamel. Easy opening front, very rigid in its extended position. Close fitting back easily removed, and secured by a safety catch. Collapsible eye-level view finder. Easy loading with hinged spool covers to prevent edge fog. In leatherette slip case.

PRICE 22/-

MODEL "33"

Fitted with All-Distance lens (Pat. 271188), which gives wonderful depth of focus, and enables sharp pictures to be secured without focussing from 4 ft. upwards. Large stop for normal exposures, small for brilliant light. Mounted in 3-speed shutter type giving $1/25$, $1/50$, $1/100$ of a second, Time and Bulb. Handsomely finished in black silk ripple enamel. The back is fitted with film pressure springs. Collapsible eye-level and waist-level view finder for upright and landscape pictures. Easy loading with hinged spool holders fitted with safety flanges preventing edge fog. In leather slip case.

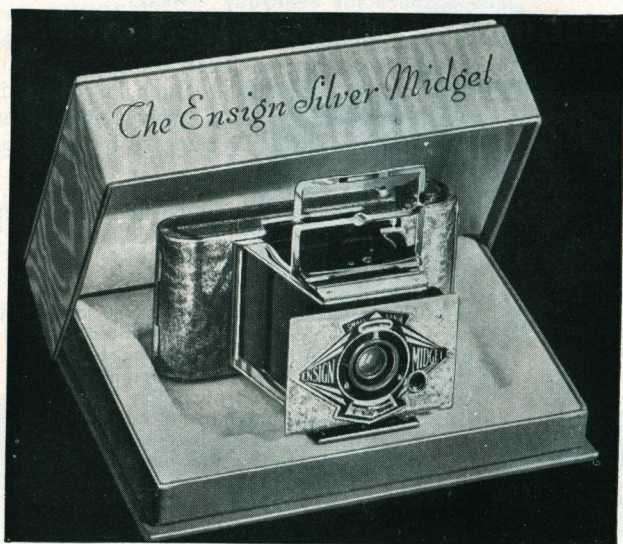
PRICE 33/-

MODEL "55"

This model is similar in design and construction to the Model "33," but is fitted with the famous Ensar Anastigmat $f/6.3$. A first-class anastigmat of adequate aperture for all purposes, focussing down to 3 ft., fully corrected and giving pin-point definition over the whole field. Complete in leather slip case.

PRICE 55/-

ENSIGN SILVER JUBILEE MIDGET



PRODUCED TO COMMEMORATE
THE SILVER JUBILEE OF THEIR
MAJESTIES THE KING AND QUEEN

Finished in silver ripple enamel the little Ensign Midget becomes a positively ravishing little piece of mechanism, dignified yet so dainty—a delight to handle and an ideal Silver Jubilee Commemoration Gift. Complete with grey leather slip-case in special gift box.

PRICES

S/33	All-Distance lens	33/-
S/55	Ensar Anastigmat f/6.3	55/-

ENSIGN—101 YEARS IN THE SERVICE OF PHOTOGRAPHY AND OPTICS

ENSIGN MIDGET TRAVELLER OUTFIT

A complete ENSIGN MIDGET equipment with accommodation for 4 spools (24 pictures)—also a colour filter. The whole outfit is contained in a handsome hand - sewn brown velvet lined leather wallet and is exceedingly convenient for holiday and travelling use. Including Ensign Midget camera "55" or "S55" in slip case.



PRICE (without films) ... £3 5 0
Filter only complete with mount in
case 7/6 Case only 5/-



ENSIGN MIDGET FILMS

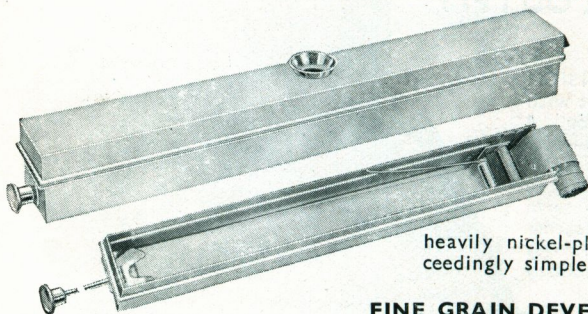
ENSIGN LUKOS No. E10
6 exp. ... 6d.

ENSIGN ULTRACHROME
No. EC10
6 exp. ... 7d.

SELO fine grain
PANCHROMATIC SFPI0
6 exp. ... 9d.

MIDGET CAMERA ACCESSORIES

DAYLIGHT DEVELOPING TANK



Enables the process of developing to be carried out completely in daylight without any difficulty and with the certainty of absolutely perfect results. The Tank is well made in hard brass heavily nickel-plated, and is exceedingly simple to use ... 12/6

FINE GRAIN DEVELOPER

A specially prepared developer to give the finest possible grain in ENSIGN MIDGET negatives, and each packet can be used for several films. Per packet 3d.

"DO-IT-YOURSELF" DEVELOPING AND PRINTING OUTFIT

Contains Daylight Developing Tank and all the necessary accessories for complete developing and printing. 18/6

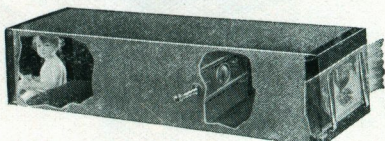


ELECTRIC CONTACT PRINTER

Prints contact prints from Ensign MIDGET strip negatives. Fitted with electric battery and accurately positioned bulb to give even illumination. Price, complete with bulb and battery ... 10/6

DAYLIGHT ENLARGING PRINTER

For making standard $3\frac{1}{4} \times 2\frac{1}{4}$ prints from Ensign MIDGET negatives. Exceedingly simple to handle, no more knowledge being required than by printing with an ordinary printing frame. Price ... 17/6



ENSIGN—101 YEARS IN THE SERVICE OF PHOTOGRAPHY AND OPTICS
10

HOURS OF ENTERTAINMENT FOR THE CHILDREN



EVERY BOY AND GIRL SHOULD KNOW—

HOW TO TAKE A
PHOTOGRAPH.

HOW TO DEVELOP
A FILM

HOW TO MAKE A
PRINT

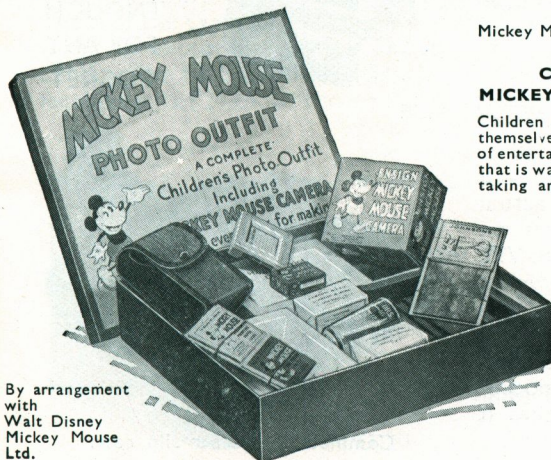
ENSIGN MICKEY MOUSE CAMERA

PRODUCED SPECIALLY TO ENABLE
CHILDREN TO LEARN SOMETHING
OF THE ART AND PRACTICE OF
PHOTOGRAPHY.

A new, strongly made little box camera giving a picture $1\frac{1}{8} \times 1\frac{1}{4}$ in. Covered with a very strong material and fitted with handle. Very simple to load. The shutter gives "Instantaneous" (snapshot) and Time exposures. The lens is of particularly fine quality and will give beautiful sharp pictures which will enlarge up to almost any size, even in the corners. The view-finder is of the wire eye-level type, very easy to use.

Price .. 6/6

Mickey Mouse Films, 6 exposures .. 6d.



By arrangement
with
Walt Disney
Mickey Mouse
Ltd.

COMPLETE ENSIGN MICKEY MOUSE PHOTO OUTFIT

Children always want to do the job for themselves and this outfit provides hours of entertainment. It contains everything that is wanted for doing the whole job of taking and producing a picture.

Contains Mickey Mouse Camera, 2 films, printing frame, 2 dishes, glass measure, gaslight and daylight printing paper, fixing salts, developer, album.

PRICE ... 10/6

Carrying Case ... 1/-

Daylight Printing Outfit 2/6

Daylight and Gaslight Printing Outfit ... 4/6

"Large Print" Maker 5/6

ENSIGN—101 YEARS IN THE SERVICE OF PHOTOGRAPHY AND OPTICS

ENSIGN DOUBLE-8

A NEW MINIATURE CAMERA

WITH
ENSAR f/4.5
ANASTIGMAT

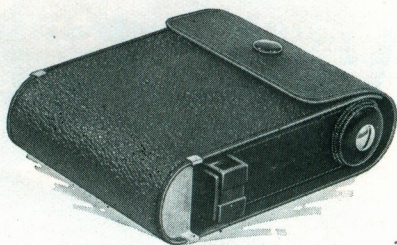
FOR 16
PICTURES
ON V.P.
(SIZE 27
FILM)
PICTURE
SIZE
 $1\frac{1}{8} \times 1\frac{1}{4}$ in.
(3×4 c.m.)

SLIM
ENOUGH
FOR ANY
POCKET



ACTUAL SIZE

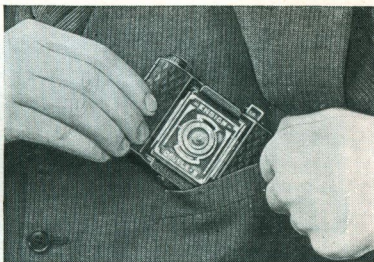
The Ensign Double - 8 Camera—illustrated actual size—takes 16 pictures on the standard 8-exposure V.P. (size 27) film and derives its name from that fact. It is the ideal all-purpose, “ever-present” camera; its slimness suits it to any pocket and its f/4.5 lens makes it suitable for all weathers.



Complete in leather slip case.

ENSIGN—101 YEARS IN THE SERVICE OF PHOTOGRAPHY AND OPTICS

THE NEW
F/4.5
MINIATURE
CAMERA



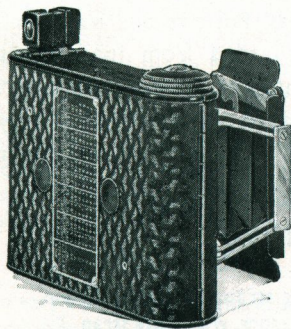
Goes in any pocket

BODY. All-metal, finished in ripple enamel and covered in specially selected hard wearing leather cloth finished in an attractive diced design. The back is hinged and opens conveniently for loading, the film being carried on spool pins. Silent winder. Tripod bush. A depth of focus scale is fitted to the back giving at a glance the areas in which objects will be sharp when the lens is focussed at its various positions.

SHUTTER forms the front—3-speed Everset gives Time, Bulb, 1/25, 1/50, and 1/100 second, the lever being very conveniently placed for releasing.

VIEW-FINDER. A special feature is the direct optical sighting viewfinder of the type used on the expensive types of miniature camera. Gives an exceptionally clear image.

LENS. The f/4.5 Ensar anastigmat is fully corrected and having a focal length of $2\frac{1}{2}$ in. will cover the full area to the corners. This lens gives a result in every respect comparable with that obtained with much more expensive models.



Depth of Focus Scale fitted to back

Camera size $3\frac{5}{8} \times 2\frac{3}{8} \times \frac{15}{16}$ in.

Film, size 27.

Picture size $1\frac{5}{8} \times 1\frac{1}{4}$ in.

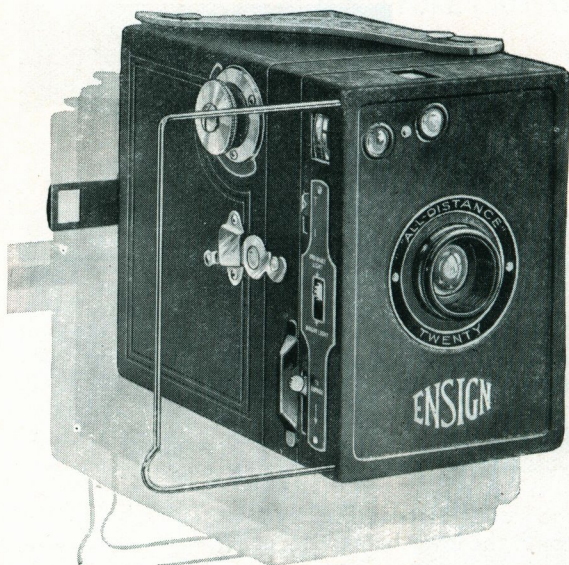
PRICE

including leather slip case

D/20 £3 12 6

ENSIGN—101 YEARS IN THE SERVICE OF PHOTOGRAPHY AND OPTICS

ENSIGN ALL-DISTANCE "TWENTY"



FOR PICTURES
 $2\frac{1}{4} \times 3\frac{1}{4}$ in.
(6×9 cm.)

THE
ARISTOCRAT
OF
BOX CAMERAS

The most outstanding introduction in simple cameras for many years. All-metal body, partially covered with first-class morocco grained leather cloth, front finished moiré ripple enamel. All-Distance lens (Patent No. 271186), eliminating focussing and enabling pin-point sharp definition to be made on subjects at any distance upwards of 3 ft. from the camera. Positive one-way Time and Instantaneous shutter with lever guarded from inadvertent release. Two stops for ordinary and bright light. Flat silent winder. Exceedingly simple loading. Film retained flat during exposure by two light springs. Upright and horizontal reflex finders, also direct vision. Size $3 \times 4\frac{1}{4} \times 4\frac{3}{4}$ in.

PRICE ... 13/6

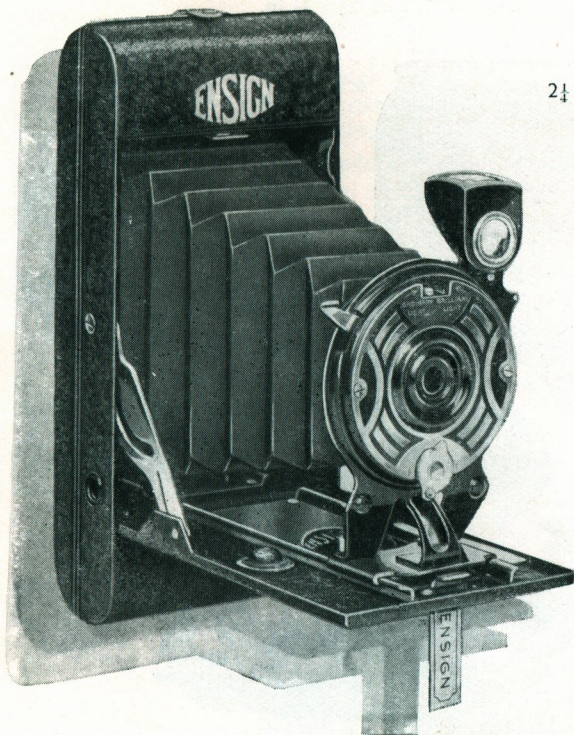
CASES: Tan mail, bound edges, with sling strap, 2/6. Silk Mohair, leather bound, with sling strap, 3/-. Solid leather, with sling strap, 7/6

ENSIGN—101 YEARS IN THE SERVICE OF PHOTOGRAPHY AND OPTICS

ENSIGN POCKET "TWENTY"

FOR PICTURES

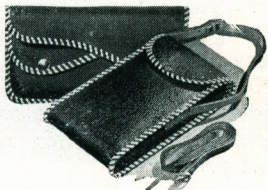
$2\frac{1}{4} \times 3\frac{1}{4}$ in. (6×9 cm.)



A beautiful little Folding Camera, handsomely finished in moiré ripple enamel. Simple loading. Patent silent, frictionless winding device. Well-made bellows. Time, Bulb, and Instantaneous shutter. Rapid meniscus lens, two stops for ordinary and brilliant light. Reflex finder giving particularly brilliant image, adjustable for horizontal and vertical positions. No focussing, the front has two positions only, for views and close-ups. Size $6\frac{3}{8} \times 3\frac{1}{4} \times 1\frac{1}{4}$ in.

PRICE £1 7 6

In very smart black leatherette case or ladies' pochette bound with black and white edging.

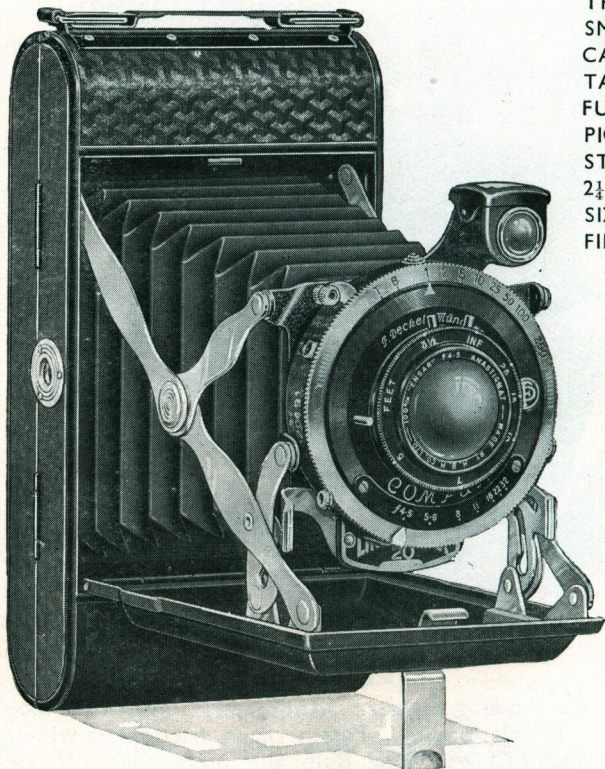


ENSIGN—101 YEARS IN THE SERVICE OF PHOTOGRAPHY AND OPTICS

ENSIGN SELFIX "TWENTY"

FOR PICTURES $2\frac{1}{4} \times 3\frac{1}{4}$ in.

THE
SMALLEST
CAMERA
TAKING A
FULL SIZE
PICTURE ON
STANDARD
 $2\frac{1}{4} \times 3\frac{1}{4}$
SIZE 20
FILMS

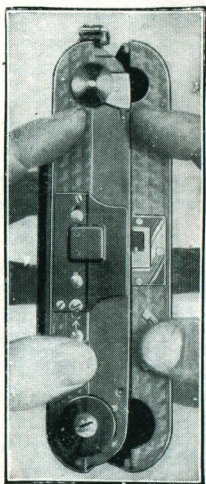


WITH TRICHRO, MULCHRO or COMPUR SHUTTER

Remarkable for its simplicity in operation, quicker **automatic** action, simpler opening and closing, easier loading and focussing. Every one of these points is incorporated in the ENSIGN SELFIX "20," yet the prices are amazingly low. The finest value in the medium-price class to-day. For optical equipment, handsome and novel finish, it has no competitor at anything approaching the same price.

ENSIGN—101 YEARS IN THE SERVICE OF PHOTOGRAPHY AND OPTICS
16

ENSIGN SELFIX "TWENTY"

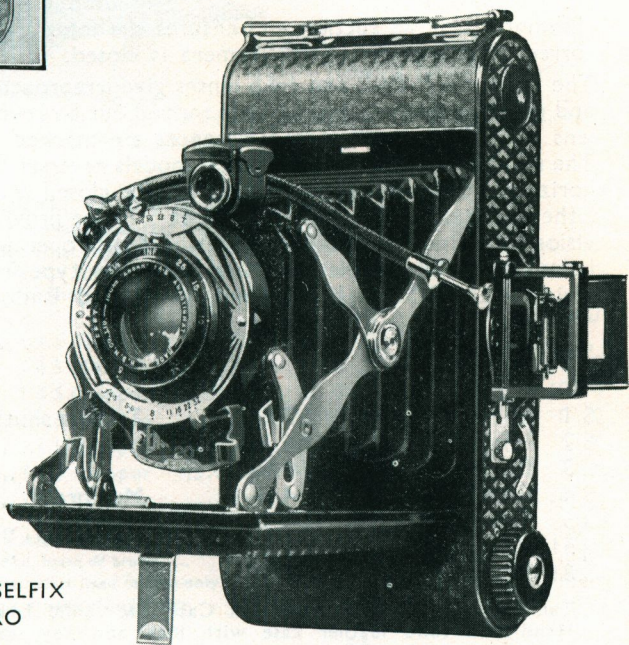


FOR PICTURES $2\frac{1}{4} \times 3\frac{1}{4}$ in.

The Ensign Selfix "20" is one of the smallest folding cameras made, taking the standard $2\frac{1}{4} \times 3\frac{1}{4}$ in. size "20" spool.

It is made throughout of light metal which, however, owing to the particularly ingenious design, is exceedingly strong.

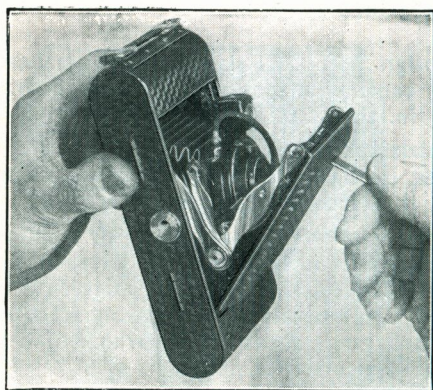
The body is covered externally with a handsome diced leather cloth of exceedingly durable quality, has beaded edges, well rounded corners, and neat carrying handle. It opens at the side as a book which makes loading particularly simple.



THE ENSIGN SELFIX
WITH TRICHRO
SHUTTER

ENSIGN—101 YEARS IN THE SERVICE OF PHOTOGRAPHY AND OPTICS

ENSIGN SELFIX "TWENTY"



The particularly rigid self-erecting mechanism is well triangulated with wide suspension points, giving ample support to the lens panel, which is rigidly held at points above and below the lens axis.

The specially designed bellows will stand up to the rapid erecting action without distress, and a generous number of folds obviates undue pull. A unique air venting system

eliminates bellows suction and ensures the folds returning to their correct formation when the camera is closed.

The Ensar f/7.7, f/6.3 and f/4.5 lenses give irreproachable definition and covering power. Focussing is carried out by revolving the front lens cell. Clear, well-spaced distances are marked down to $3\frac{1}{2}$ ft. The reflex view finder fitted to all models reverses for upright and horizontal pictures and the camera can be closed with the finder in either position. All models (except S/1) are provided with direct vision view finders and film registering device operated by the sight hole cover. All models are fitted with new type Trichro shutters giving 1/25, 1/50, 1/100 second, Time and Bulb, with Flexible releases.

Size : $5\frac{5}{8} \times 3 \times 1\frac{3}{8}$ in.

PRICES

S/1	Ensar Anastigmat	f/7.7	...	Trichro shutter	£2	2	6
S/2	Ensar	"	f/6.3	"	"	2	15 0
S/3	Ensar	"	f/4.5	"	"	3	15 0
S/4	Ensar	"	f/4.5	Mulchro	"	4	15 0
S/5	Ensar	"	f/4.5	Compur	"	6	15 0
S/51	Ross Xpres	"	f/4.5	"	"	10	10 0
S/81	Zeiss Tessar	"	f/4.5	"	"	10	10 0

Tan Mail Case 2/6. Mohair Silk Case 2/6. Solid Leather Case 4/6
Hand-sewn solid leather case with lock and key, velvet-lined 7/6



ENSIGN CARBINE No. 7

FOR PICTURES $2\frac{1}{4} \times 3\frac{1}{4}$ in.

A first-class all-purpose camera.

STANDARD MODEL, Leather Covered.

BODY: Brass, covered with the finest quality morocco grained leather. Specially flat winding key. Double hinged back. Strong leather handle. Two tripod bushes.

FILM REGISTERING DEVICE ensures absolute flatness of the film.

BELLOWS: Selected leather, linen lined.

FRONT: Elegant casting absolutely rigid with rising and cross movement.

RADIAL FOCUSING: Quick action, allowing focussing to within 4 ft.

VIEW FINDERS: Reflex reversible for upright and horizontal pictures, and direct vision with sighter plate for eye-level use.

SIZE: $7 \times 3\frac{1}{2} \times 1\frac{1}{2}$ in.

TROPICAL MODEL, Florentine Bronze Finish.

This model is not leather covered but is finished in Florentine Bronze. The bellows are made of triple-proofed Russia leather which is impervious to insects; the camera is therefore essentially one for use in the tropics and in regions where atmospheric conditions are difficult.

				Standard			Tropical		
Ensar Anastigmat f/4.5 Trichro shutter	7/20	£4	15	0	—	—	—	—	—
Ensar „ f/4.5 Mulchro „	7/21	5	15	0	T7/21	£7	5	0	0
Ensar „ f/4.5 Compur „	7/22	8	0	0	T7/22	9	10	0	0
Aldis Uno „ f/4.5 Mulchro „	7/10	6	10	0	T7/10	8	0	0	0
Aldis Uno „ f/4.5 Compur „	7/11	8	15	0	T7/11	10	5	0	0
Ross Xpres „ f/4.5 Compur „	7/51	11	17	6	T7/51	13	7	6	6
Zeiss Tessar „ f/4.5 Compur „	7/81	11	0	0	T7/81	12	10	0	0

CARRYING CASES AND ACCESSORIES

Solid leather, hand sewn, black or brown	6/6	6/6
Finest hide, hand sewn, velvet lined (brown only)	10/6	10/6
Model fitted with back to take plate holders	...	extra	15/-	15/-
Plate holders for same	2/6	3/6
Focussing screen	8/6	12/6

ENSIGN—101 YEARS IN THE SERVICE OF PHOTOGRAPHY AND OPTICS



ENSIGN AUTO - RANGE

With Automatic Focussing
Coupled Range Finder

FOR PICTURES
 $2\frac{1}{4} \times 3\frac{1}{4}$ in.

The automatic focussing camera
with :—

RIISING FRONT
CROSS FRONT
RADIAL FOCUSING
ADJUSTABLE EYEPIECE
CHOICE OF LENSES
AND SHUTTER

The ENSIGN AUTO - RANGE Camera is provided with a range-finder coupled with the lens focussing mechanism, and is operated from the usual radial focussing lever.

When sighted on the object, the lever is moved until two images seen in the range-finder coincide (see illustration).

The eye-piece is also adjustable for variations in eye-sight.

The range-finder is mounted on the side of the camera close to the eye-level view-finder, so that a minimum of movement is required to transfer the eye from the range-finder to the view-finder.

The high-speed "FOCAL-PLANE" model embodies simultaneous film winding and shutter setting thus enabling successive shots to be made with extreme rapidity.

ENSIGN AUTO-RANGE

With Automatic Focussing Coupled Range Finder

SPECIFICATION

BODY: Metal double-hinged back. Covered fine grain leather. Leather handle. Two tripod bushes. Flat closing catch.

FILM REGISTERING DEVICE: Exerts pressure on film during exposure—releases for winding.

LOADING: Exceptionally simple.

BELLOWS: Selected leather, linen lined.

FRONT: Exceptionally rigid casting.

RADIAL FOCUSING: Quick action, very easy in operation and allowing focussing to within 4 ft.

CROSS FRONT: Screw operated.

RISING FRONT: Operated by lever.

VIEW-FINDERS: Reversible reflex and direct vision with sighter plate for eye-level use.

"BETWEEN LENS" SHUTTERS

Mulchro: Speeds 1 sec., $\frac{1}{2}$, 1/5, 1/10, 1/25, 1/50, 1/100, Time and Bulb.

Compur: Speeds 1 sec., $\frac{1}{2}$, 1/5, 1/10, 1/25, 1/50, 1/100, 1/250, Time and Bulb.

FOCAL PLANE SHUTTER: Speeds, 1/15, 1/25, 1/50, 1/75, 1/100, 1/150, 1/250 and 1/500 of a second, and Time. One knob sets speeds and winds the film.

		"Between Lens" Shutter		Focal Plane Shutter
Ensar Anastigmat	f/4.5	AR/20 Trichro	£6 10 0	} FP/20 £11 15 0
Ensar	„ f/4.5	AR/21 Mulchro	7 10 0	
Ensar	„ f/4.5	AR/22 Compur	9 10 0	
Aldis Uno	„ f/4.5	AR/11 Compur	10 10 0	FP/10 13 10 0
Ross Xpres	„ f/4.5	AR/51 Compur	13 12 6	FP/51 18 10 0
Zeiss Tessar	„ f/4.5	AR/81 Compur	12 15 0	FP/81 20 0 0
Dallmeyer	„ f/3.5	—	—	FP/63 17 10 0
CASES:	Finest hide velvet-lined brown leather	11	6	... 15 0

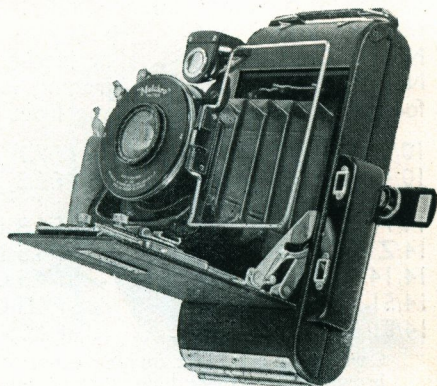
Choice of Shutters:—

MULCHRO, COMPUR or
FOCAL PLANE

STANDARD MODEL:—

WITH ENSAR f/4.5
ANASTIGMAT IN
MULCHRO SHUTTER

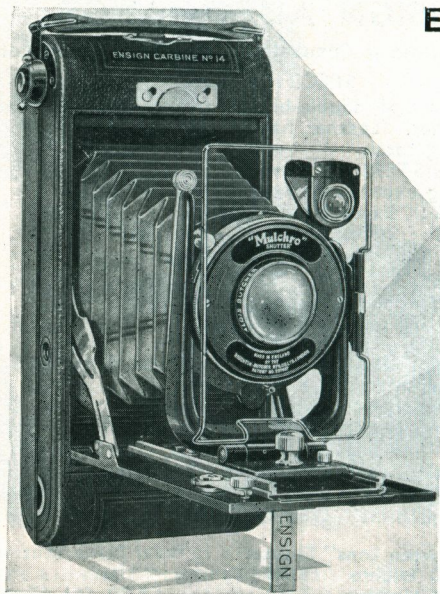
£7 10 0



ENSIGN—101 YEARS IN THE SERVICE OF PHOTOGRAPHY AND OPTICS

ENSIGN CARBINE

Nos. 10 & 14



FOR
PANEL SHAPE
PICTURES
 $2\frac{1}{2} \times 4\frac{1}{4}$ in.

A first-class camera with all the necessary movements for taking pictures of any type of subject. Wood body reinforced by metal end sections, metal back. Ensign film registering device. Simple loading. Selected leather bellows. Stamped "U" front providing absolute rigidity for lens and shutter. Brilliant view finders for upright and horizontal pictures. Silent winder. Two tripod bushes. Flexible release. Size, $7\frac{1}{4} \times 4\frac{1}{4} \times 1\frac{3}{4}$ in.

No. 10. Covered best quality leather cloth.

No. 14. Covered morocco grained leather and fitted with radial focussing, lever operated rising front and direct vision view finder.

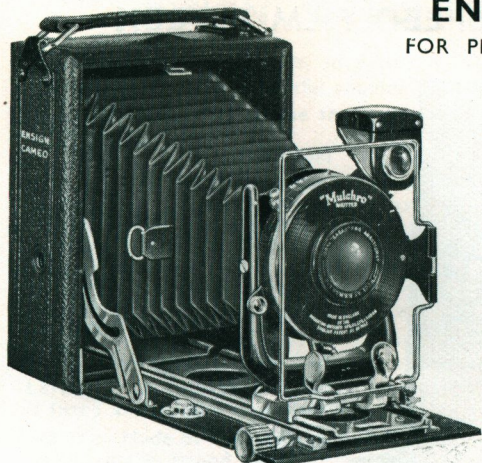
10/5	Aldis Uno Anastigmat	f/7.7 Trichro shutter	...	£3	5	0
10/4	Ensar	f/6.3 Trichro	..	3	15	0
14/7	Ensar	f/6.3 Mulchro	..	5	15	0
14/Z	Aldis-Butcher	f/4.5 Mulchro	..	7	15	0
14/14	Aldis-Butcher	f/4.5 Compur	..	10	0	0
14/51	Ross Xpres	f/4.5 Compur	..	12	2	6
14/81	Zeiss Tessar	f/4.5 Compur	..	12	0	0

Carrying Cases, best quality canvas, 2/9. Solid leather, black or brown, 8/6. Finest hide, brown, velvet-lined, lock and key. 12/6

ENSIGN—101 YEARS IN THE SERVICE OF PHOTOGRAPHY AND OPTICS

ENSIGN CAMEO

FOR PLATES OR FILM - PACKS



Well-seasoned wood body, covered with leather. Infinity catch, focussing scale, leather bellows. Aluminium cast front, rising front, cross movement. Reflex and direct vision view finders are fitted. Rack and pinion double extension, 2A, $8\frac{1}{2}$ in. ; 2B, $9\frac{1}{2}$ in.

Outfits include two single metal plate holders, flexible release, focussing screen

		Shutter	($3\frac{1}{2} \times 2\frac{1}{2}$)	($\frac{1}{2}$ -plate)
Aldis Uno Anastigmat f/7.7	3-speed	—	—	2B/5 £5 10 0
Ensar „ f/4.5	Mulchro	2A/21	£5 15 0	—
Aldis-Butcher „ f/4.5	Compur	—	—	2B/14 11 12 6
Dallmeyer „ f/4.5	Compur	—	—	2B/61 9 17 6
Ross Homocentric,, f/6.3	Compur	2A/50	10 10 0	2B/50 11 12 6
Ross Xpres „ f/4.5	Compur	2A/51	11 17 6	2B/51 14 10 0

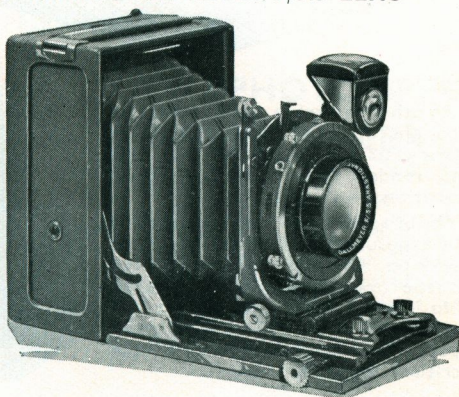
Extra single metal plate holders, 2/6. Film-pack adapter, 8/6. Roll film holder, 17/6. Leather Case, for camera, six slides and film-pack adapter (2A), 12/6. (2B), 15/-.

SUPER-SPEED CAMEO WITH DALLMEYER F/3.5 LENS

Cast body with leather-lined panels. Cast front. Rising and cross movement. Optical direct vision finder also reversible Reflex finder. Long double extension, rack and pinion focussing. Lens and shutter detachable by bayonet catch. Including two "Klip-on" dark slides. Compur Shutter speeded to 1/200 sec. Black and chromium or brown and florentine finish.

£15 15 0

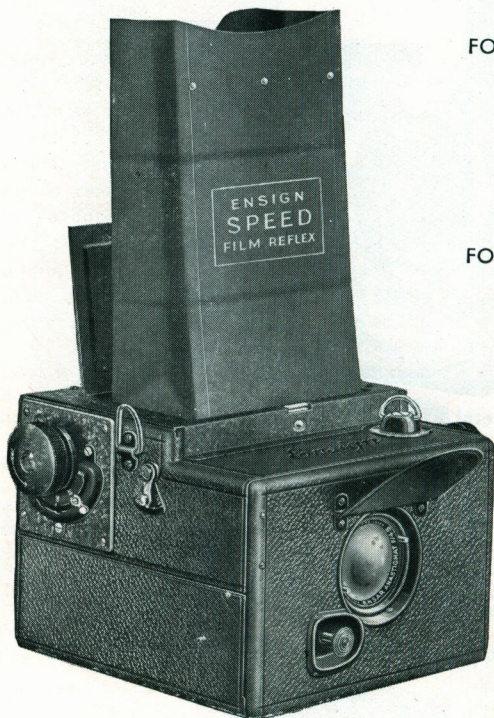
Leather case, velvet-lined, £1 5 0
"Klip-on" slides, 3/6. Film-pack adapter, 12/6. Roll-film holder, 17/6



ENSIGN SPEED FILM REFLEX

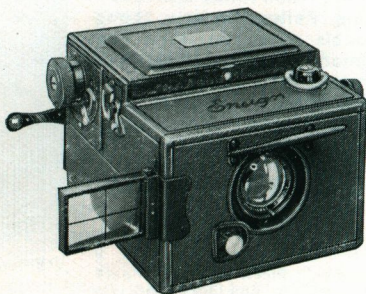
FOR PICTURES $2\frac{1}{4} \times 3\frac{1}{4}$ in.
(6 × 9 c.m.)

WITH
ENSAR f/4.5 LENS
&
FOCAL PLANE SHUTTER
£6 17 6



No other camera is quite so easy to handle, quite so capable of giving first-class results, or quite so able to render help in picture competition.

The image is seen up to the moment of exposure, full size, and the right way up, and this alone is half the battle towards first-class pictures. No matter what the subject the reflex will make it simple to compose, and easy to catch at the critical moment.



ENSIGN—101 YEARS IN THE SERVICE OF PHOTOGRAPHY AND OPTICS

ENSIGN SPEED FILM REFLEX

The ideal full-view camera, in which it is possible to see and focus the subject up to the moment of pressing the shutter release.

SPECIFICATION

SHUTTER: Focal plane type, exceedingly efficient in operation, passing maximum amount of light to the screen. Operates from 1/25 second to 1/500, the full range being 1/25, 1/40, 1/50, 1/75, 1/125, 1/250, 1/500, also Time. Very easy to operate, the same knob sets the shutter and changes the speed.

MIRROR: Surface silvered and coupled to the shutter mechanism; very easy to release and quite free from shock.

LENSES: A full range of lenses is available. The Ensar f/4.5 anastigmat is fitted as standard and gives beautiful definition over the whole field.

BODY: Made of selected mahogany, covered full grained morocco leather, spring handle, tripod bushes.

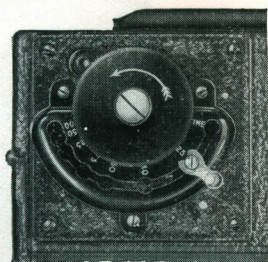
HOOD: Long deep hood effectively shielding the focussing screen.

R/20	ENSAR Anastigmat	f/4.5	£6 17 6
R/10	Aldis Uno	„	f/4.5	7 17 6
R/15	Aldis-Butcher	„	f/3.4	10 10 0
R/63	Dallmeyer Dalmac	f/3.5	12 10 0
R/51	Ross Xpres	„	f/4.5	13 10 0
R/81	Zeiss Tessar	„	f/4.5	15 0 0

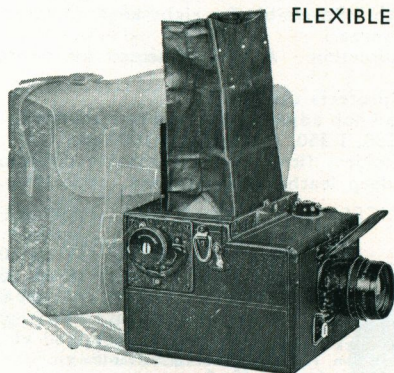
LEATHER CASE, best hide, velvet-lined, with lock and key ... 18/6

DIRECT VISION VIEW FINDER, as illustrated ... 25/-

FLEXIBLE RELEASE, for Time exposures 3/6



Speeds set by a knob.



TELEPHOTO SPEED FILM REFLEX

Enables large images to be obtained at long distances. Fitted with Ensar Anastigmat f/4.5 and Dallmeyer Telephoto f/6.5. Including set of colour filters, 2, 3 and 4 times, with spring mount, complete in leather case ... £15 15 0

ENSIGN SPECIAL REFLEX

With Self-Capping Focal-Plane
Shutter.

One turn of a knob sets the
shutter and alters the speed.



Mahogany Body. Covered in fine seal grain leather. Black enamelled and nickel-plated fittings. Black leather bellows with ample extension. By rack and pinion focussing.

Self-erecting hood with narrow mouth. Reversible for right angle pictures. Optically worked mirror, surface silvered.

Revolving back operates in either direction. A hooded screen for direct focussing.

Rising and falling front. Sky shade protects the lens.

Focal plane self-capping shutter. One knob adjusts blind and sets shutter :—
1/15, 1/20, 1/30, 1/50, 1/75, 1/100, 1/200, 1/350, 1/500, and 1/1000 sec.

Including three single metal plate holders fitted with detachable cut-film sheath, back focussing screen with deep leather-covered hood, neck strap.

PRICES

				$3\frac{1}{2} \times 2$ in.		$\frac{1}{4}$ -plate
SR/14	Aldis-Butcher	Anastig.	f/4.5	5 in.	£12 0 0	6 in. £12 15 0
SR/15	Aldis-Butcher	"	f/3.4	5 $\frac{1}{4}$ "	15 0 0	7 " 15 15 0
SR/51	Ross Xpres	"	f/4.5	5 $\frac{1}{2}$ "	15 10 0	6 " 17 0 0
SR/81	Zeiss Tessar	"	f/4.5	5 $\frac{1}{4}$ "	17 10 0	6 " 19 0 0

Single metal plate holders, 2/6. Film-pack adapter (leather covered), 12/6

Roll holder to take standard size 20-roll film, 17/6. Leather case, velvet-lined
($3\frac{1}{2} \times 2\frac{1}{2}$ in.), £1 10 0. ($\frac{1}{4}$ -plate), £1 15 0

ENSIGN—101 YEARS IN THE SERVICE OF PHOTOGRAPHY AND OPTICS



ENSIGN SUPER-QUALITY CAMERA CASES

LEATHER.

No Ensign leather case is made from dyed, buffed, or doped material of any kind. Guaranteed to be made of the finest British materials only. Solid hide, full-grained and hand curried, i.e., old-fashioned bridle leather.

For Cameras	Tan Mail, Bound edges		Silk Mohair, leather bound		Leather Black or Brown		Leather velvet-lined Brown only	
All-Distance Twenty	110	2/6	510	2/6	40	7/6	—	—
Pocket Twenty ...	103	2/6	503	2/6	—	—	—	—
Ensign Selfix ...	114	2/6	503A	2/6	29	4/6	33	7/6
Ensign Carbine No. 7	103B	2/6	—	—	30C	6/6	34	10/6
No. 10 and 14 ...	104	2/9	—	—	31	8/6	35	12/6
Brownie No. 2 ...	111	2/6	511	3/-	—	—	—	—
„ 2A ...	113	2/9	—	—	—	—	—	—
Ensign No. 3 ...	108	3/-	—	—	6	10/-	10	13/-
„ No. 3A ...	109	3/6	—	—	7	11/6	11	15/-
Speed Film Reflex ...	—	—	—	—	—	—	13	18/6
Special Reflex $3\frac{1}{2} \times 2\frac{1}{2}$	—	—	—	—	—	—	55	30/-
„ „ $\frac{1}{4}$ -plate	—	—	—	—	—	—	51	35/-

TAN MAIL AND SILK MOHAIR

All have double-turned binding, so that no raw edge whatever appears. Only best quality British materials are used and each is provided with long leather sling strap.



ENSIGN CAMERA ACCESSORIES

ENSIGN COLOUR FILTERS

Made in England from British Optical Glass

Absolutely fully corrected, being optically polished and of good even colour which will not fade. Can be used successfully with all lenses. Essential for landscape and pictorial work where the differences in tone of green, yellow, orange, and brown have to be accurately reproduced. Made in three densities increasing exposure by 2, 3 and 4 times.

No.	To fit lenses up to	Filter only	Spring mount only	Leather case	Set of 3 in case
3	1 1/4 in.	3/-	3/6	2/-	14/6
4	1 1/2 in.	4/6	4/-	2/6	20/-
5	2 in.	6/6	5/6	3/6	30/-



"OPTIGRAD" GRADUATED SKY FILTERS

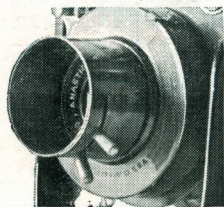
Optically ground glass, graduated to equalise the difference between sky and subject. The exposure on the sky portion is restrained to enable ground detail to receive ample exposure and at same time secure cloud effects.



No.	For lenses up to	Filter only	Spring Mount	Leather Case
No. 17.	For lenses up to 1 1/4 in. ...	7/6	3/6	2/-
No. 18.	For lenses up to 1 1/2 in. ...	10/-	4/-	2/6
No. 19.	For lenses up to 2 in. ...	15/-	5/6	3/6

ENSIGN SUPPLEMENTARY LENSES

Considerably increase the scope of work possible with hand cameras. For Portrait "close-ups," Wide Angle, Copying, and Telephoto Photography. To fit lenses up to 1 1/4 in. outside diameter. With Holder, each 6/6 Without Holder 3/6 Set of four lenses with Holder 16/-



"SHADIT" SPRING LENS HOOD

This all-metal lens hood grips the front cell firmly and enables good clear pictures to be taken even against the light. It is instantly attached and removed, and if desired will take standard light filter mounts. Made in 11 sizes.

For lens mounts, 3/8, 7/8, 1, 1 1/8, 1 1/4, 1 3/8, 1 1/2 in. dia. 2/-
For lens mounts 1 5/8, 1 3/4, 1 7/8, 2 in. dia. ... 2/6

ENSIGN VIEW-FINDER MAGNIFIER

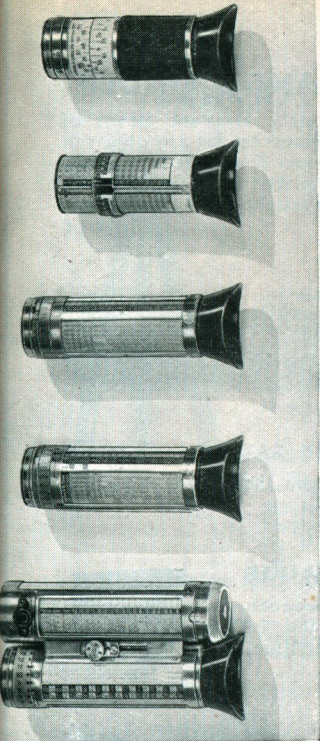
Fits on to the view-finder. The adjustable magnifying lens shows the picture in much greater detail and well shaded.

No. 0 for Ensign Selfix. ...	4/6
No. 1 " View-Finders 3/4 x 3/4. ...	4/6
No. 2 " " 1/2 x 1/2. ...	4/5
Shade only ...	9d.

ENSIGN LENS CLEANERS

Outfit containing special cleaning solution, brush and polishing cloth ... 2/6
Special polishing material, prevents condensation ... 9d.
Special tissue, per pad of 10 sheets ... 2d.





BEWI EXPOSURE METERS

WILLO CINEMETER. For users of amateur cine cameras.

£1 10 0

JUNIOR. Gives correct exposure without calculations.

£1 1 0

SENIOR. A comprehensive meter giving correct reading under all conditions, for all emulsions and all climates. Also movement speed chart and other useful data.

£1 16 0

LEICA. For use with Leica cameras.

£2 2 0

TELE. This instrument combines the senior Bewi with a range finder. In leather case.

£3 15 0

ELECTRO BEWI

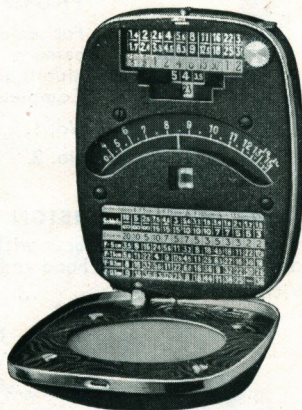
ELECTRO-BEWI, smallest, lightest and fastest of all electric exposure meters.

Can be carried in the waistcoat pocket without difficulty. Measures weak interior light by means of a

built-in optical meter. Shows at a glance diaphragms from $f/1.4$ to $f/36$, and from $1/3000$ sec. to 1 hour. No calculations have to be made. Suitable for all negative emulsions. Fitted with depth of focus scale.

PRICE ... £4 10 0

Soft leather Wallet with "Zip" fastener 5/-



OMBRUX AND BLENDUX ELECTRIC METERS

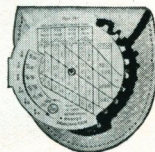
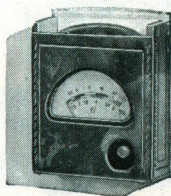
"Ombux" for still cameras or "Blendux" cine cameras in ever-ready case with supplementary scales.

£4 4 0

ENSIGN POSOMETER

Can be carried in the waistcoat pocket. For every subject, and every plate or film. In leather case with snap fastener.

1/6



ENSIGN—101 YEARS IN THE SERVICE OF PHOTOGRAPHY AND OPTICS



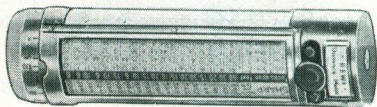
ENSIGN RANGE FINDER

Provides an absolutely accurate means of ascertaining exact distances for any object in any light at any time. The milled adjusting dial is conveniently placed for easy movement

whilst sighting. The eye-piece is adjustable for eyesight, and it measures only $3 \times 1 \times \frac{1}{2}$ in. Price, complete in leather case £1 12 6

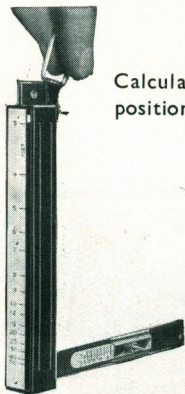
"BEWI" DISTANCE METER

This distance meter or range-finder measures distances accurately down to 3 ft. from infinity, with depth of focus table to ensure accurate focus on all distances. Price £1 16 0



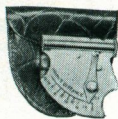
HOLBORN DISTANCE GAUGE

Calculates the distance an object is from the camera from any position. Very accurate. Scaled in feet 5/-



PRIMUS DISTANCE GAUGE

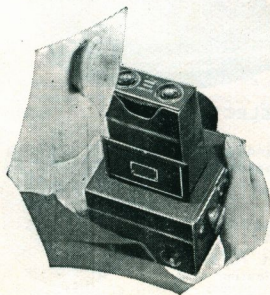
For calculating distances between camera and objects. Made in aluminium with silvered pendulum. Complete in leather case.



- | | | | | | |
|-------------------------|-----|-----|-----|-----|-----|
| No. 1. Scaled in feet | ... | ... | ... | ... | 2/- |
| No. 2. Scaled in metres | ... | ... | ... | ... | 2/- |

ENSIGN REFLEX MAGNIFIER

For obtaining critical focus with a reflex camera. Spring-operated sides grip the sides of any size of hood and at the correct focal length. Metal throughout. With leather case 18/6

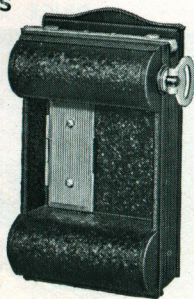


ROLL-FILM HOLDERS

Winds films in the normal direction. For use with Plate and Reflex Cameras. Takes the standard 8-exposure $3\frac{1}{4} \times 2\frac{1}{4}$ in. roll film. All-metal.

- No. 1. For $3\frac{1}{2} \times 2\frac{1}{2}$ in. cameras ... 17/6
 No. 2. For $\frac{1}{4}$ -plate cameras ($3\frac{1}{4} \times 2\frac{1}{4}$ in. film) ... 17/6

Specify camera when ordering



TRIPODS AND ACCESSORIES

METAL TELESCOPIC

Black enamelled, automatic closing, with nickel top.

No.	Sections	Height	Closed	Weight		
1	3	42 in.	17 in.	16 oz.	...	6/6
4	4	49 "	16 "	21 "	...	10/6
5	5	51 "	15 "	26 "	...	12/6
6	7	48 "	12 "	23 "	...	15/-

"HIP-POCKET FLAT"

Can easily be carried in the hip pocket. Black enamelled automatic closing. Polished tubes. Closed, 8 $\frac{3}{4}$ in. Open, 46 in. Weight, 21 oz. 7 sections.

No. 22. With leather case ... 25/-

Light weight model. Suitable for Leica, Contax and other miniature cameras.

No. 23. Closed, 7 $\frac{3}{4}$ in. Open, 46 in. Weight, 10 $\frac{1}{2}$ ozs.

10 sections ... 37/6

"FEATHERWEIGHT"

FLAT. In meta case. Extended, 42 in. Closed, 11 in. Weight, 17 oz. 7 sections.

No. 20 ... 22/6

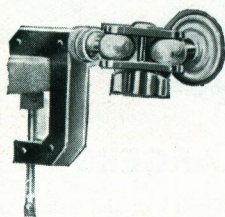
ROUND. A rigid tripod of light metal tubing highly polished. Weight, 12 oz. Extended, 48 in. Closed, 16 in. 4 sections.

No. 21 ... 17/6

UNIVERSAL BALL AND SOCKET HEAD

Enables a camera to be set at any angle. Also for using the tripod for supporting the camera in a vertical position for such work as photographing pages direct from books, small objects, coins, maps, and any object which comes within its range. For use with any camera ... 3/6

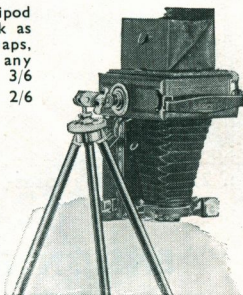
Midget pattern. Very compact ... 2/6



THE "MULTIPOD"

A pocket tripod. The clamp fitting allows the "Multi-pod" to be fitted almost anywhere always allowing the camera to be set absolutely level.

Nickel-plated .. 6/6

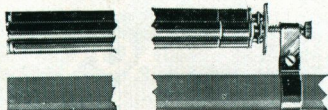


"AUTOTIMER" SHUTTER RELEASES

Releases the shutter 15 seconds after it is set in motion. Enables you to include yourself in group pictures.

Model 1, for instantaneous exposures, releases the shutter at whatever speed it is set, automatically, 15 seconds after it is set in action 7/6

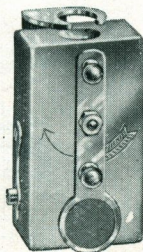
Model 2, for instantaneous exposures at shutter speeds, and time exposures of $\frac{1}{2}$ to 10 seconds, 15 seconds after it is set in action 12/6



ENSIGN CYCLIST TRIPOD CLIPS

Enables tripod to be carried on a bicycle as unobtrusively as an ordinary pump.

Price per set ... 2/6



ENSIGN MAGNAPRINT ENLARGERS

SUPER-SPEED CONDENSER MODELS

The "Magnaprint" gives you super speed, without the slightest loss of quality. This is mainly due to the perfect optical and illuminating system employed, whereby a light diffused at its source and requiring no adjustment is concentrated on the lens by a powerful condenser. All models fitted with ENSAR f/6.3 Enlarging Anastigmat.

PRICES (without lamps)

For Miniature Negatives and large portion of $2\frac{1}{4} \times 2\frac{1}{4}$. Enlarges up to 15×12 .

MV/0 Vertical model only ... £4 10 0

For $3\frac{1}{2} \times 2\frac{1}{4}$ and all Smaller Negatives, also large portion of $\frac{1}{4}$ -plate. Enlarges up to 15×10 .

H/1 Horizontal model ... £5 5 0

V/1 Vertical model ... 7 10 0

For $\frac{1}{4}$ -plate and all smaller sizes. Enlarges up to 20×16 in.

H/2 Horizontal model ... £7 10 0

V/2 Vertical model ... 10 10 0

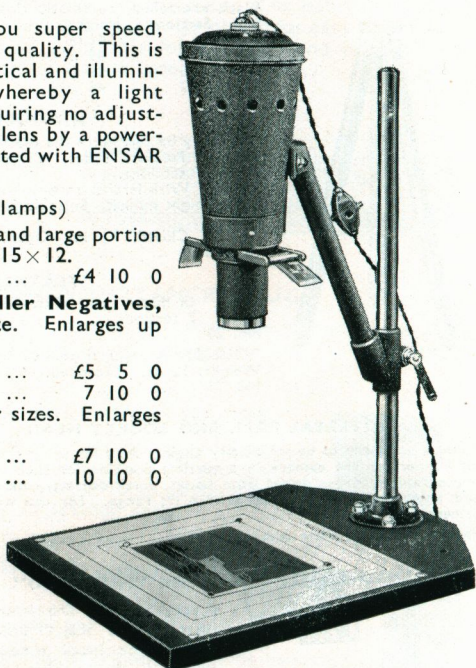
SILVALUX LAMPS :

100 watt ... 3/2

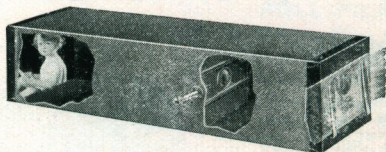
150 watt ... 5/9

ENLARGING EASELS:

No. 2, with tilting rotating movements 50/-



ENSIGN DAYLIGHT ENLARGERS



No more difficult to handle than an ordinary printing frame, and the results are incomparably more attractive. There is no focussing. Just put the negative at one end and the bromide paper at the other.

Made of seasoned wood, leatherette

covered. Holders for negative and bromide paper. Achromatic lens and metal shutter.

No. 1.	For post-card enlargements, from $2\frac{1}{2} \times 1\frac{1}{2}$ in.	negatives	15/-
No. 2.	" " " " " " $2\frac{1}{4} \times 3\frac{1}{4}$ in.	" " " "	17/6
No. 2M.	" $2\frac{1}{4} \times 3\frac{1}{4}$ in.	" Midget and $\frac{1}{2}$ V.P. "	17/6
No. 3.	For $\frac{1}{2}$ -plate enlargements from $3\frac{1}{4} \times 2\frac{1}{4}$ in.	negatives ..	27/6
No. 5.	" $1\frac{1}{4}$ -plate " " $4\frac{1}{4} \times 3\frac{1}{4}$ in.	" ..	32/6

ENSIGN—101 YEARS IN THE SERVICE OF PHOTOGRAPHY AND OPTICS

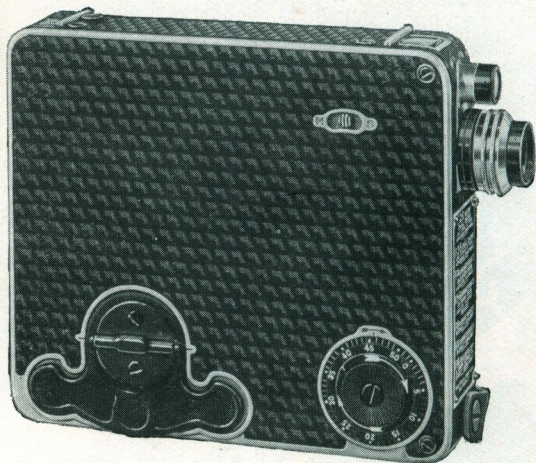
— ENSIGN —
SIMPLEX POCKETTE
16 M/M CINE CAMERA

SO EASY TO CARRY

SO SIMPLE TO LOAD



ENSIGN SIMPLEX POCKETTE CAMERA



A REAL
"MOVIE"
CAMERA FOR
POCKET OR
HANDBAG

THE ENSIGN
SIMPLEX -
POCKETTE is the
perfect response to
the demand for a
camera simple to
handle, light in
weight and easy to
carry. Loading is a
matter of seconds.
Weight 35 ozs.
Pocket size, $1\frac{1}{2} \times$
 $4\frac{3}{4} \times 5\frac{1}{2}$ in.

LOADING. Takes only 5 seconds. A 50 ft. charger is inserted and engages automatically with the mechanism. No threading. The film can be removed when partly exposed.

MOTOR. Runs 20 ft. at one winding. Flat winding key.

EXPOSURE TRIGGER. Gives continuous running; single frame exposures. SPEEDS. 16 and 12 frames per second.

FOOTAGE INDICATOR. With adjustment to stop automatically when a predetermined footage has been run.

LENSES. Ensar 1-in. f/3.5 fixed focus lens or Dallmeyer 1-in. f/2.9 lens in focussing mount. Interchangeable telephoto lenses.

VIEW FINDER. Folding direct vision and waist-level finders.

EXPOSURE GUIDE. Gives correct lens setting for all lighting conditions.

FINISH. Covered in black, diamond-patterned fabric. Leather carrying handle. Tripod bush

PRICES fitted with

ENSAR F/3.5 Anastigmat	£20	0	0
DALLMEYER F/2.9 in focussing mount	25	0	0

CASES

Type A fitted Travel Case for camera, Dallmeyer 2-in. f/2.9 and 3-in. f/3.5 Telephoto Lenses with masks, and 2X and 4X colour filters for each lens £2 10 0

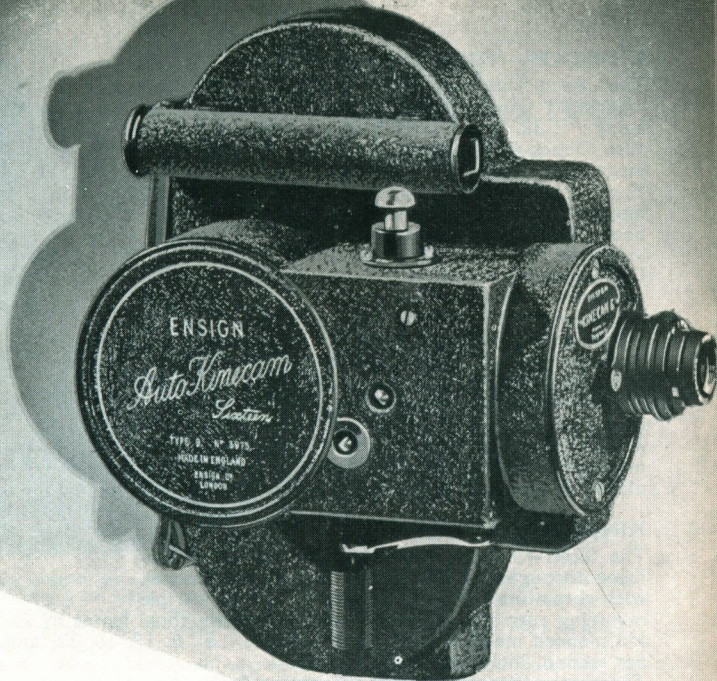
Type B. Brown Leather, velvet lined, for camera and one extra charger 15/-
Type C. Soft Brown Pigskin Purse 5/6

Telephoto Lenses. Interchangeable with the standard lenses with mask.
2-in., f/2.9 £8 13 0 3-in., f/3.5 £9 7 0

Colour Filters. In screw fitting mount. Two densities, 2X and 4X.
For Ensar 1-in. f/3.5, or Dallmeyer 1-in. f/2.9 10/-; 2-in. f/2.9 12/6; 3-in. f/3.5 12/6

3 ft. Portrait Attachment, for Ensar f/3.5 lens 12/6





ENSIGN KINECAM 16m.m. CINÉ CAMERAS

Good Ciné Pictures, steady on the screen and completely free from eye-straining flicker, are only possible with really well-made precision Cameras. Poorly made apparatus simply wastes film, whereas good apparatus need never waste a single foot.

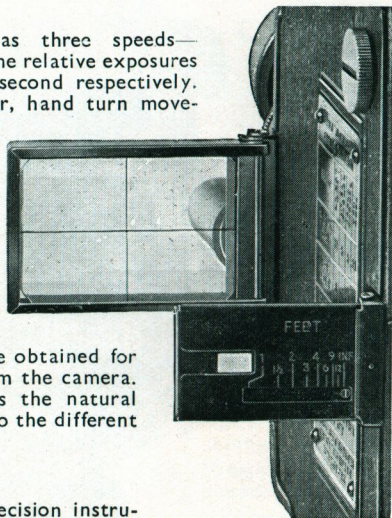
Ensign Kinecams are precision Cameras throughout, and are made and designed by engineers who have a whole life of experience in the design and manufacture of this type of apparatus. Only the best engineering methods of manufacture are employed, with the result that the mechanism of an Ensign Kinecam works so smoothly as to be hardly audible, never wears out, and is a constant pleasure to use, giving a maximum of perfect results with a minimum of trouble.

ENSIGN—101 YEARS IN THE SERVICE OF PHOTOGRAPHY AND OPTICS

KINECAM—MODEL 6

The Auto-Kinecam Model "6" has three speeds—"Normal," "Slow Motion," "Slow," the relative exposures being: $1/32$, $1/128$, and $1/16$ of a second respectively. Also Direct Vision View Tube Finder, hand turn movement for "dissolving" effects, and Taylor-Hobson Cinar $f/2.8$ or Dallmeyer Speed $f/1.5$ anastigmats, both 1-in. focus, in mounts focussing down to 1 ft. Also fitted with Dallmeyer $f/3.5$ 1-in. lens in fixed mount.

A feature of the Models 6 and 8 ($f/2.8$ and $f/1.5$) Kinecams is a direct vision axial finder placed on the lid in the direct axis of the lens, thus enabling accurate centring to be obtained for very close-up shots down to 1 ft. from the camera. A sliding scaled back sight corrects the natural misalignment at short distances due to the different planes of the lens and view finder.



KINECAM- MODEL 8

The Super-Kinecam Model 8 is a precision instrument throughout, finished in silk ripple enamel, with chromium-plated fittings. Fitted with a triple revolving turret head, capable of taking any three lenses of different focus. Multi-speed mechanism with five speeds, i.e., 8, 12, 16, 32, and 64 pictures per second, including "slow motion."

The patent tri-optic synchronising view finder, fitted with three separate lens combinations, enables a correct view to be obtained in the exact size in which it will appear in the film, whichever lens is being used on the turret.

Complete with hand-sewn leather cases, velvet lined (except Model 6 $f/3.5$) which has hand-sewn, unlined, leather case).

MODEL 6

Dallmeyer Anastigmat, $f/3.5$, 1-in. focus	£13 13 0
---	-----	-----	-----	----------

MODEL 6 with direct vision axial finder

Taylor-Hobson Cinar Anastigmat, $f/2.8$, 1-in.	18 18 0
---	-----	-----	-----	---------

Dallmeyer Speed Cinar $f/1.5$, 1-in.	25 0 0
---	-----	-----	-----	--------

MODEL 8 with direct vision axial finder

Taylor-Hobson Cinar Anastigmat $f/2.8$, 1-in.	45 0 0
--	-----	-----	-----	--------

Dallmeyer Speed Cinar Anastigmat $f/1.5$, 1-in.	50 0 0
--	-----	-----	-----	--------

The axial finder can be fitted to earlier Model Kinecams at an extra charge of £2 10s. 0d. In all cases the camera must be sent for fitting.

SECURE A COPY OF THE COMPLETE RANGE OF ENSIGN 16 mm.
CAMERAS, PROJECTORS AND ACCESSORIES.



ENSIGN SILENT-SIXTEEN PROJECTORS

A complete departure from conventional projector design. Embodies many new features which revolutionise the facility with which a projector may be handled. The whole operation being reduced to that simplicity associated with the operation of a portable gramophone.

NO "UNPACKING"
NO "FITTING UP"
NO "PUTTING AWAY"

The handsome case in which the mechanism is permanently fixed is strongly made, and is covered with the finest quality black leather cloth. The front opens and folds back for easy loading and manipulation, every part being very accessible.

By one movement both spool arms are brought up into position at the same time, and by a similar movement folded away again.

THE MECHANISM. Mounted in die-cast housings, and completely silent in operation. It embodies the positive claw, and patent flickerless barrel type shutter, thus retaining the well-known rock-steady screen picture associated with all Ensign Silent Sixteen projectors.

OPTICAL EQUIPMENT. Designed as one unit, and the special 2-in. f/1.8 Dallmeyer "Superlite" projection lens is the best the world produces for 16 mm. projectors. It is mounted in a hinged mount for easy threading, and has "quick thread" focussing.

THE FRAMING DEVICE. This most ingenious feature centres the picture on the screen by the simple movement of a lever, without requiring to alter the elevation of the machine.

MOTOR DRIVE AND COOLING SYSTEM. The driving unit is mounted in a separate section with the lamp, and embodies a powerful silent running fan, which provides scientifically conducted draught for both lamp and motor regulator, thus during operation they remain completely cool. The motor regulator is operated through the case, from the outside. The 300B model has an auxiliary fan mounted directly beneath the mechanism which cools the operating parts, gate, and film during operation.

ILLUMINATION is provided by a specially constructed double coiled 100-watt or 300-watt (according to model), 100-volt lamp, with powerful reflector designed to the filament of the lamp, and an auxiliary resistance is included for all voltages from 100 to 250. A "still" picture can be shown.

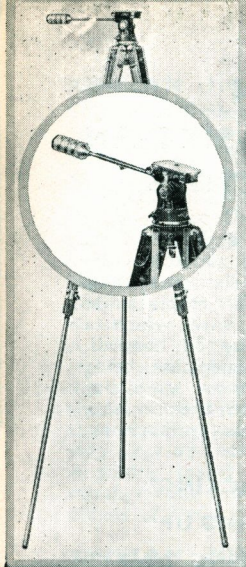
PRICES

Complete with all leads, 400-ft. reel, oil bottle, Dallmeyer 2-in. "Superlite" f/1.8 projection lens, "all-voltage" resistance, lamp, spare take-up spring, and driving belt.

Model 100B with 100-watt lamp	£17 10 0
Model 300B with 300-watt lamp	29 10 0

Hand-Drive Outfit (modified design).

Fitted with "Super" lens, for use on any ordinary house lighting voltage from 100 to 250, capable of taking full-length Library films; the outfit is complete and ready for use. In handsome case, and includes 100-ft. Mickey Mouse film £7 10 0



The top plate is hinged and the camera can be fixed at right angles for floor "shots."

The camera is fixed by a screw hidden in the head when closed.

The camera in position, panoramas a complete circle, and elevates to 150 degrees.

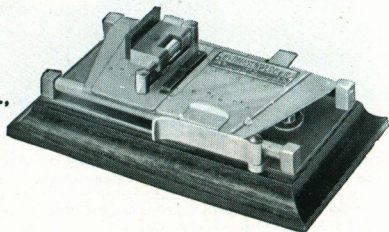
Top leg sections, fashioned oak, lower sections of steel tube, chromium-plated. Height fully extended, approximately 6 ft., closed 2 ft. 9 in. One of the steel legs accommodates a wire bracing arrangement, which prevents the tripod legs from being knocked apart.

The large lever grip holds adjusting spanners.

The lever control is permanently attached by a knuckle joint, and folds down when the tripod is closed.

One end of each leg is provided with a spike for use on rough ground. The other end of each leg has a rubber buffer for use on slippery floors.

PRICE ... £7 10 0



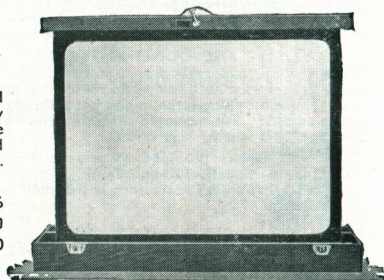
The ease with which a splice may be made, and the time taken, has been considerably improved upon by reducing the number of movements to a minimum. Fitted with an automatic dry scraper so constructed to prevent the excessive scraping of the base after the emulsion has been removed. The trimming of the ends and actual joining are carried out in one movement.

Complete with 1 oz. bottle of cement £2 15 0

Pat. No. 379781

A most practical type of screen. Can be erected in an instant by one hand only. Provides a very brilliant picture. The screen is lowered into the box by one movement. Oak box, polished, and fitted with strong carrying handle and clasps. Patent.

No. 11.	32 x 24 in.	£2 12 6
No. 12.	40 x 30 "	3 5 0
No. 13.	50 x 40 "	4 0 0



FILMS FOR SALE. A large selection of Ensign Films is available for purchase at prices varying according to length, including 36 MICKEY MOUSE and SILLY SYMPHONIES at 12/- each.

FILMS FOR HIRE. The ENSIGN FILM LIBRARY includes many films featuring well-known stars and a comprehensive catalogue is issued entitled Pleasure Hours, 128 pages. Price 1/-

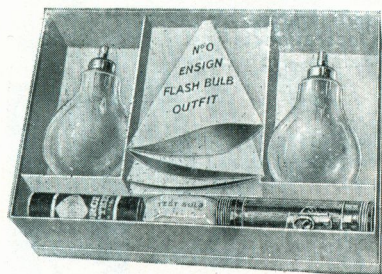
ENSIGN—101 YEARS IN THE SERVICE OF PHOTOGRAPHY AND OPTICS
38

EASY INDOOR PHOTOGRAPHY WITH ENSIGN PHOTO FLASH BULB OUTFITS

AND PHILIPS PHOTO-
FLUX BULBS

NO SMOKE!
NO NOISE!

JUST A SILENT FLASH



Snapshots can be made of people moving, playing, dancing, and generally enjoying themselves, such as have hitherto been quite impossible. It can be used in any room, any time, anywhere, and the subject need not even be aware of the photographer. Operates from an ordinary torch battery. Each bulb gives one flash.

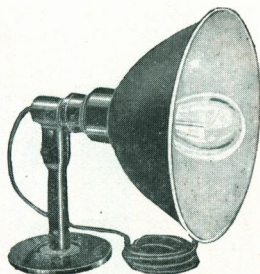
No. 0 Outfit with 2 flash-bulbs, Silverlite folding reflector, torch, battery, and test-bulb	5/6
No. 1 Outfit with 2 flash-bulbs, torch, battery, test bulb, and Multiray metal reflector	12/6
FLASH BULBS. Large for groups up to 40-50 people	1/6
Small for close-ups and groups of 4 or 5	1/-

PHOTO-FLOODLIGHT OUTFITS

Metal reflector on non-conducting material stand and metal base, with switch, 6-ft. flex with bayonet pin plug.

PRICES (without lamps)

For screw fitting lamps	12/6
For screw or bayonet lamps	15/-
Inexpensive high intensity lamps for indoor photography for amateurs, giving a highly actinic light.			
OSRAM, "Photoflood"	4/-



EASI-FLASH PHOTO KIT. A complete flashlight outfit containing metal flash-lamp, powder measure, 3 tapers and flash powder. In neat storage box with instructions ... 2/6
JOHNSON'S FLASH POWDER. Gives a brilliant, instantaneous flash with a minimum of smoke and dust. Small ... 1/- Large ... 1/9 1 oz. tins 2/6

ENSIGN—101 YEARS IN THE SERVICE OF PHOTOGRAPHY AND OPTICS

ENSIGN "DO IT YOURSELF" DAYLIGHT DEVELOPING TANKS

Doing your own developing is very interesting and involves no tedious hours in the dark room. A daylight tank will do it all for you, and if you use High Speed or Panchromatic Film is absolutely essential.

ENSIGN JUNIOR DAYLIGHT DEVELOPING TANK



For the beginner. Metal throughout, with aluminium finish outside, and special anti-sulphuric coating on the inside so as to render the dish impervious to chemical action.

For Size "20" $2\frac{1}{4} \times 3\frac{1}{4}$ roll-films 7/6
Developing Powders, packet of 6 1/-

ENSIGN CARBINE DAYLIGHT TANK

Suitable for all types of film—Every operation in full daylight—No "apron"—No messy container—No changing box required—Absolute simplicity.

PRICES

		Tank	Developing Powders Per packet	Box of 6
No. 1 for size 27 films	...	15/-	4d.	1/6
No. 2 " 20 "	...	21/-	5d.	2/-
No. 3 " 16 "	...	25/-	6d.	2/6
No. 4 " 18 "	...	30/-	6d.	2/6

ENSIGN KLIMAX TANK for Plates

All operations (except loading) can be carried out in daylight. Six plates may be developed at one time. Brass throughout, with exceptionally fine nickel-plating.

For $3\frac{1}{2} \times 2\frac{1}{2}$, 18/6. $4\frac{1}{4} \times 3\frac{1}{4}$, 20/-. $5\frac{1}{2} \times 3\frac{1}{2}$, 22/6

Developing Powders—box of 6 1/6

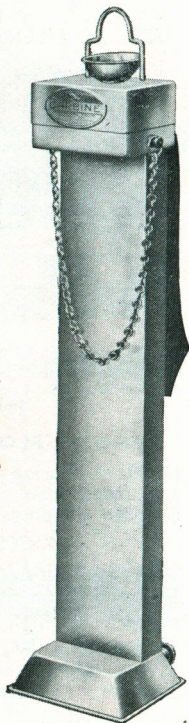


FILM PACK TANK

For the daylight development of a complete film pack. Every operation, except loading, done in daylight. Films loaded separately into carriers. Solid nickel, with loose rack for films.

$3\frac{1}{4} \times 2\frac{1}{4}$, 24/- $4\frac{1}{4} \times 3\frac{1}{4}$, 25/-
 $5\frac{1}{2} \times 3\frac{1}{4}$, 27/-

Developing Powders—packets of 6; No. 1, 1/6; No. 2, 2/3; No. 3, 3/-



ENSIGN—101 YEARS IN THE SERVICE OF PHOTOGRAPHY AND OPTICS

ENSIGN "DO IT YOURSELF" DEVELOPING AND PRINTING OUTFITS



CONTAIN EVERYTHING YOU
REQUIRE FOR FINISHING
YOUR OWN PICTURES.

Contents of Outfit :

- 1 oz. bottle "Azol" developer.
- 1 Bakelite developing dish.
- 1 Xylonite fixing dish.
- 1 Dark-room lamp with night light.
- 4 oz. Tumbler measure.
- 1 $3\frac{1}{2} \times 2\frac{1}{2}$ Printing Frame.
- Floating Thermometer.
- 4 oz. tin Acid Fixing Powder.
- 1 Tube Amidol developer.
- 3 Packets M.Q. developer.

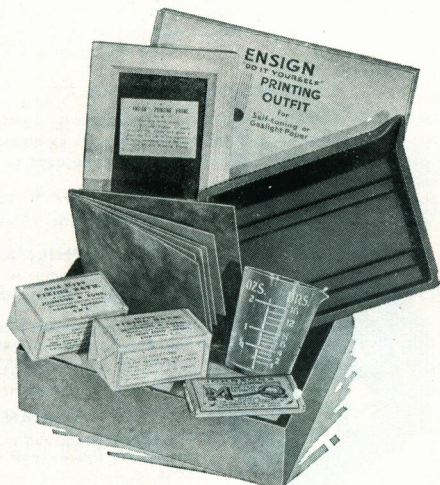
In cardboard box	8/6
In well-made wood cabinet for fixing to wall	15/-

PRINTING OUTFIT

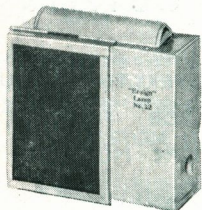
FOR $3\frac{1}{4} \times 2\frac{1}{4}$ SIZE

Containing all that is required for printing. Learn something of the photographic processes by starting with a simple printing outfit, before you proceed to the more intricate processes of developing and enlarging. Contains Printing Frame, Dish, Measure, Fixing Salts of Self-toning and Gaslight Paper and Developer.

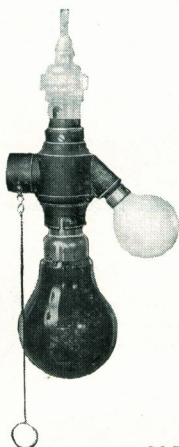
PRICE ... 3/9



ENSIGN—101 YEARS IN THE SERVICE OF PHOTOGRAPHY AND OPTICS



No. 12.



For Night Lights—Japanned metal, substantially made and well ventilated. Fitted with removable top, safe ruby glass and night-light.

No. 1. With glass front, $3\frac{1}{2} \times 2\frac{1}{2}$ in., 1/- Night lights, 3d.

For Oil Burning—Metal, enamelled and well ventilated. Removable top.

No. 5. With pick-up burner, and safe glass, $4 \times 2\frac{1}{2}$ in. ... 1/6

No. 6. With externally operated burner, cowl, adjustable shade and safe glass, $5 \times 4\frac{1}{2}$ in. ... 2/6

No. 12. Gives a safe, reflected light: painted white inside. With oil burner, ruby glass and orange fabric, $6 \times 4\frac{1}{2}$ in. ... 5/-

Ensign Burning Oil, 6-oz. tins 9d.

Makes any room a perfect "dark-room" at a moment's notice. For use on any electric point. For loading plates, making prints or developing.

Ruby or Orange. Small or Large each 4/6



An all-bakelite 2-arm Adapter, with an auxiliary 5-watt opal lamp. Fitted with a 3-way rotary chain switch which allows independent control of either normal or auxiliary light. For 200-250 volts only. (State voltage when ordering).

Adapter with 5-watt opal lamp ... 2/6

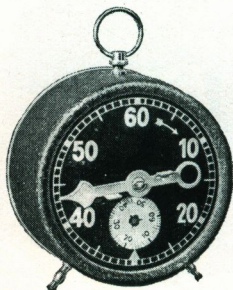
Operated by a flash-lamp battery. Provided with an orange ground glass and a ruby safelight filter so that its use is by no means limited. A plain glass provided enables the lamp to be used as an ordinary hand lamp ... 3/9



These 40-watt lamps will never develop heat. The light given cannot "fog" plates or films. For voltages 100/130 or 200/260. (State voltage).

Dark Red for orthochromatic material	2/9
Pale Red for Bromide papers	2/9
Amber for gaslight papers	2/6
Dark Green for panchromatic material	2/6

Indicates seconds and minutes on separate dials. Clearly defined hands and figures, easily readable in red light. Rings alarm at hour ... 15/9



ENSEN—101 YEARS IN THE SERVICE OF PHOTOGRAPHY AND OPTICS

MEASURES

Ensign Universal

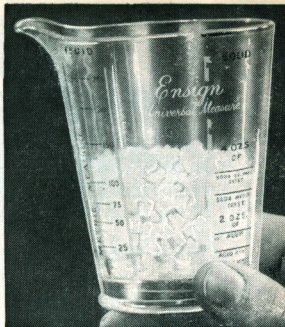
Tumbler shape moulded with foot and lip. With English and Metric fluid graduations, and for bulk chemicals

Tumbler. White enamelled graduations, glass.
 1 oz. 2 oz. 4 oz. 8 oz. 10 oz.
 — 10d. 1/- 1/4 1/6

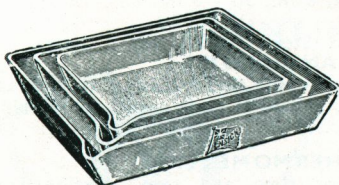
Everseen. Black Print markings, white top edges.

Conical ... 1/6 1/8 2/- — —
 Cylindrical — 1/8 2/- — 3/-

Engraved Letter. Conical or Cylindrical.
 1/3 1/6 1/8 2/3 2/6



DEVELOPING DISHES



ENAMELLED STEEL. Double coated
 White enamelled

$4\frac{1}{4} \times 3\frac{1}{4}$ in. 1/8 $5\frac{1}{2} \times 3\frac{1}{2}$ in. 2/-
 $6\frac{1}{2} \times 4\frac{1}{4}$ in. 2/6 $8\frac{1}{2} \times 6\frac{1}{2}$ in. 3/3

PORCELAIN. Finest quality
 Staffordshire Porcelain.

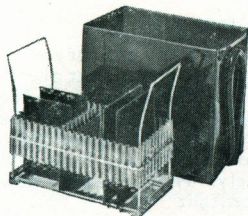
Semi-		Semi-	
In. deep	Deep	In. deep	Deep
$3\frac{1}{2} \times 2\frac{1}{2}$	1/2 1/3	$6\frac{1}{2} \times 4\frac{3}{4}$	2/6 2/9
$4\frac{1}{4} \times 3\frac{1}{4}$	1/6 1/9	$8\frac{1}{2} \times 6\frac{1}{2}$	4/- 4/6
$5\frac{1}{2} \times 3\frac{1}{2}$	1/9 2/-		

XYLONITE. With ribbed bottom and lip.

$4\frac{1}{4} \times 3\frac{1}{4}$ in. 7d. $6\frac{1}{2} \times 4\frac{3}{4}$ in. 1/-
 $5\frac{1}{2} \times 3\frac{1}{2}$ in. 8d. $8\frac{1}{2} \times 6\frac{1}{2}$ in. 1/4

BAKELITE. Light and practically unbreakable.

$3\frac{1}{2} \times 2\frac{1}{2}$ in. 1/- ;	$\frac{1}{4}$ -plate 1/3
Post-card 1/6 ;	$\frac{1}{2}$ -plate 2/6
	1/1-plate 3/9



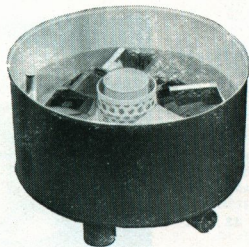
WASHERS

For Plates. No. 1.
 Japanned, with syphon and loose zinc rack for 12 plates. $3\frac{1}{2} \times 2\frac{1}{2}$, 2/3
 $4\frac{1}{4} \times 3\frac{1}{4}$, 2/6

For Prints. No. 7.
 Round, Japanned, white inside. $3\frac{1}{2} \times 2\frac{1}{2}$, 3/-
 $4\frac{1}{4} \times 3\frac{1}{4}$, 4/6



No. 7.



Speed Washer

ENSIGN AMATEUR SPEED WASHER

Automatic action. Complete change of water every three minutes. No great pressure of water is required to keep the prints or cards in motion. Connect to tap with hose pipe, turn on water and washer will automatically empty and refill continuously. Made in extra stout zinc, coated with special hard cellulose enamel.

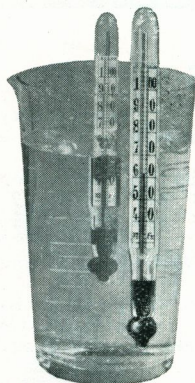
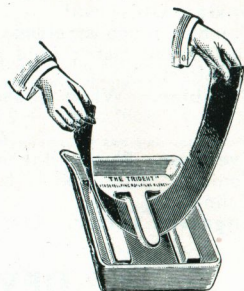
Hosepipe connection ... 10/6
 ... 3/6

DEVELOPING AND WASHING ACCESSORIES

TRIDENT DEVELOPING WEIGHT

Facilitates the development of roll films in lengths.
Made in porcelain.

- No. 1.
Takes films up to $3\frac{1}{4}$ in. wide (without dish) 2/6
- No. 2.
Takes films up to 5 in. wide (without dish) 3/-



Stirring Rods.

- Ebonite, 7d. Glass, 6 in., 3d. 8 in., 4d. 12 in., 5d.
Forceps. Ebonite ... $2\frac{3}{4}$ in., 6d. $5\frac{1}{4}$ in., 1/-
Stainless Steel Small, 6d. Large, 1/-

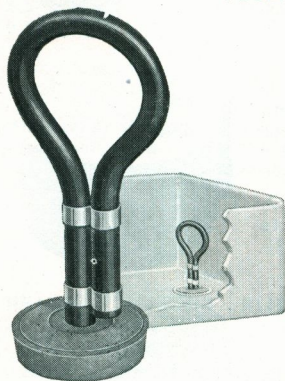
ANTI-SWIRL

A rubber attachment, easily fitted to any standard tap.
Prevents splashing, and so is most useful for washing
plates and prints 6d.

THERMOMETERS

Very important for time and tank development.
For testing temperature of solutions.

- No. 1. 5 in. nickel case. Opal scale to 190° Fahr. 2/-
No. 2. In nickel frame, engraved from 30° to 130°
Fahr. 2/6
FLOATING (as illustrated) 1/6



ENSIGN AUTO-SIPHON

By means of the Auto-siphon any ordinary wash
basin is readily converted into an efficient photo-
graphic washer for films, plates and papers. The
hypo-laden water, being the heavier, sinks to the
bottom and is removed by the Auto-siphon.
With the taps turned on slightly the basin will
fill and empty alternately. With a heavier flow
the level will remain constant.

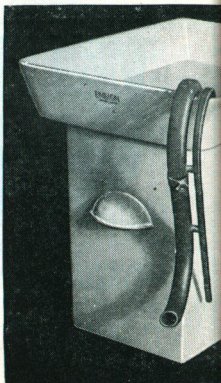
- 1 in., $1\frac{1}{8}$ in., $1\frac{1}{4}$ in., $1\frac{1}{2}$ in.,
 $\frac{1}{8}$
 $1\frac{1}{2}$ in., $1\frac{5}{8}$ in., $1\frac{3}{4}$ in., $1\frac{7}{8}$ in.,
2 in., $2\frac{1}{8}$ in., $2\frac{1}{4}$ in., 2/-

ENSIGN INTERMITTENT SYPHON

AUTOMATICALLY EMPTIES AND REFILLS TANKS
AND DISHES

Continues to fill and empty a dish or tank so long as the
water is allowed to run. Chromium-plated.

- No. 1. For use in dishes: 7/6
No. 2. For use in tanks: 8/6



ENSIGN PRINTING FRAMES

No. 4. Wood—for Films (with glass)

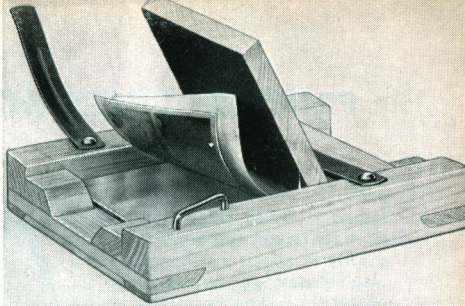
In.			In.		
$2\frac{1}{2} \times 1\frac{1}{8}$...	1/-	$4\frac{1}{2} \times 3\frac{1}{2}$...	1/3
$2\frac{1}{2} \times 2\frac{1}{2}$...	1/-	$4\frac{1}{2} \times 2\frac{1}{2}$...	1/3
3×2	...	1/-	$5\frac{1}{2} \times 3\frac{1}{2}$...	1/7
$3\frac{1}{2} \times 2\frac{1}{2}$...	1/-	5×4	...	2/3
$4\frac{1}{2} \times 2\frac{1}{2}$...	1/3			

No. 6. Wood—for Plates

In.			In.		
$2\frac{1}{8} \times 1\frac{3}{8}$...	11d.	$5\frac{1}{2} \times 3\frac{1}{2}$...	1/9
$3\frac{1}{2} \times 2\frac{1}{2}$...	11d.	5×4	...	2/3
$4\frac{1}{2} \times 3\frac{1}{2}$...	1/3	$6\frac{1}{2} \times 4\frac{3}{4}$...	2/3

Metal—for Plates or Films (with glass)

In.			In.		
$4\frac{1}{2} \times 3\frac{1}{2}$...	1/3	$5\frac{1}{2} \times 3\frac{1}{2}$...	1/6



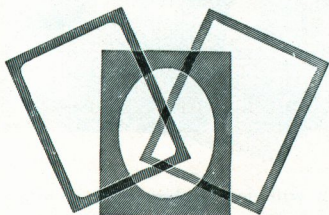
PRINTING MASKS

"SEE-THRU" PRINTING MASKS

Transparent orange celluloid giving crisp masking of prints. Rectangular, oval and rectangular with cushion corners.

Prices per packet of each size :

Up to and including $3\frac{1}{2} \times 2\frac{1}{2}$ in.	...	Set of 3	6d.
Up to and including $\frac{1}{2}$ -plate and $4\frac{1}{2} \times 2\frac{1}{2}$ in.	9d.
Up to and including Post-card and 5×4 in.	10d.
Up to and including $\frac{1}{2}$ -plate	1/6



OPAQUE MASKS

Clean cut, square, circular and oval openings. In packets of 25.

Up to 5×4 in., per packet of each size, 6d. $\frac{1}{2}$ -plate 1/-

VIGNETTES

For adding vignettes to snapshots. Delicately graduated. Fixed outside or inside frame. Flexible unbreakable material.

Sets of 3 oval or 3 pear openings.	$4\frac{1}{2} \times 3\frac{1}{2}$ in.	2/3	$5\frac{1}{2} \times 3\frac{1}{2}$ in.	3/-	$6\frac{1}{2} \times 4\frac{1}{2}$ in.	4/-			
Celluloid. Delicately graduated, pear or oval.									
$3\frac{1}{2} \times 2\frac{1}{2}$ in.	6d.	$4\frac{1}{2} \times 2\frac{1}{2}$ in.	9d.	$4\frac{1}{2} \times 3\frac{1}{2}$ in.	9d.	$5\frac{1}{2} \times 3\frac{1}{2}$ in.	1/-	$6\frac{1}{2} \times 4\frac{1}{2}$ in.	1/6

CELLULOID CLOUD NEGATIVES

Improves the appearance and pictorial value of prints. Assorted designs of clouds.

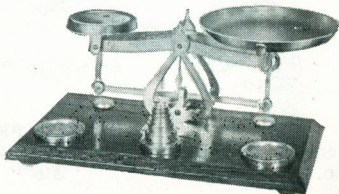
$3\frac{1}{2} \times 2\frac{1}{2}$ in.	...	1/-	$4\frac{1}{2} \times 3\frac{1}{2}$ in.	...	1/3	$5\frac{1}{2} \times 3\frac{1}{2}$ in.	...	1/6	$6\frac{1}{2} \times 4\frac{1}{2}$ in.	...	2/-
--	-----	-----	--	-----	-----	--	-----	-----	--	-----	-----

ENSIGN SCALES

No. 12a (illustrated). Nickel-plated, with large loose nickel pan and oak base, with set of weights for weighing up to 12 oz. ... 16/6

Accurately balanced. With grain and dram weights in box.

No.	Beam	Pans	
1	... 6 in.	... Brass	6/6
2	... 8 in.	... Brass	11/6
3	... 6 in.	... Glass	8/6
4	... 8 in.	... Glass	15/-
6	... Pillar pattern,		
	6 in.	... Brass	9/6
Set of Weights	1/6



PRINT DRYING AND GLAZING PRESS

Electrically heated by two ordinary 40 or 60 watt lamps. Dries semi-matt or matt paper quickly and evenly in about 5 minutes, also glossy on ferrotype plates. Takes about 10 minutes to heat up and the prints are held firmly in position by a strong fabric cover attached to a metal frame.

Made of metal; with flex, lamp-holders and ferrotype plate. Any ordinary house-hold lamps (not supplied) may be used.

Price 18/6



GLAZING PLATES.

Chromium. First-class plating, prints will not stick. With rounded corners and holes for hanging.

Size 14 × 10 in. each 5/3

Ferrotype.

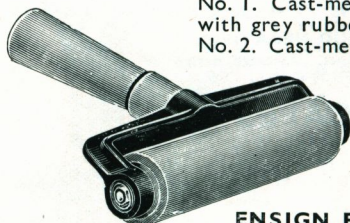
Imperial, 14 × 10 in. each 10d.

Thick each 11d.

ROLLER SQUEEGEES

No. 1. Cast-metal frame, polished wood handle and roller with grey rubber covering ... 4 in., 1/4; 6 in., 1/9

No. 2. Cast-metal frame, polished wood handle and rollers with non-perishable red rubber covering. 4 in., 2/-; 6 in., 2/9



FLAT SQUEEGEES

Stout grey rubber and wood handle. 4 in., 1/3. 6 in., 1/9. 8 in., 2/2. 12 in. 3/-

ENSIGN PRINT GLAZERS

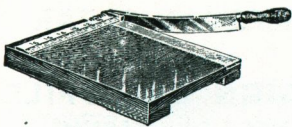
No. 1. 10 × 8 in. ... 1/- No. 2. 12 × 10 in. ... 1/6

KLITO PRINT GLAZERS

Require no preparation with chalk. Prints fall off when thoroughly dry.

No. 1. 10 × 8 in. ... 3/6 No. 2. 12 × 10 in. ... 4/6

ENSIGN—101 YEARS IN THE SERVICE OF PHOTOGRAPHY AND OPTICS



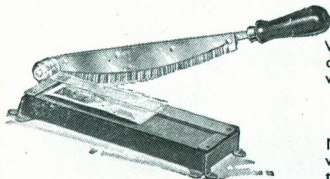
Wood

PRINT TRIMMERS

Wood

Polished hardwood, with graduated rule. Sheffield steel blade gives a clean-cut edge.

5 in. ... 6/6 7 in. ... 8/6 9 in. ... 12/-



Deckle

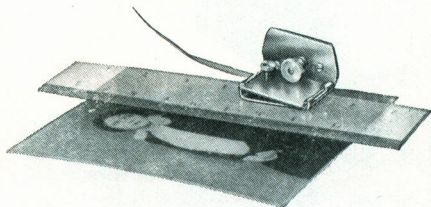
Metal

With a 6-in. cutting edge. The table has a transparent celluloid holding strip so that trimming prints with equal white margins becomes a simple matter ... 5/6

Deckle-Edge

Metal throughout. Cutting knife has serrated cast edge which produces the deckle edge on print. Fitted with transparent cutting gauge and polished wood handle.

5½ in. ... 8/6



Jay-Nay

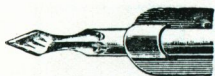
No. 2. A popular priced but efficient trimmer.

5 in. ... 3/6 7 in. ... 5/-

Holborn Exact

A useful means of utilising old Gillette type razor blades. The trimmer is laid upon a ruler, pressed down and drawn along, when a clean cut results ... 1/6

Exact



Pen Nib

Pen Nib

Used in holder supplied or any ordinary penholder.

20 with holder ... 1/6

Trimming Knives

No. 1. Single blade, polished handle 1/-

No. 2. Double-edge blade, turned handle ... 1/6

No. 3. Spear-edged blade, ebonised handle ... 2/-

No. 4. For cutting ovals or circles 2/-

Extra wheels ... each 6d.



No. 1

Mounting.

Stub. Stiff hog hair, short handle ... 5d.

No. 110, Black bristles, wood handle ... ½ in., 7d.; 1 in., 1/-; 1½ in., 1/3

Spotting 00 0 1 2 3 4 5 6

Ordinary quality ... 5d. 5d. 6d. 7d. 8d. 10d. 1/-

Best quality, Pure Sable 8d. 8d. 9d. 10d. 11d. 1/2 1/4 1/8

BRUSHES



DARK ROOM PINS

Per doz.

MASCOT. Glass heads and needle points ... 9d.

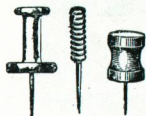
PRIMUS. Coiled wire heads and needle points 1/-

ENSIGN. Unbreakable Erinoid, small ... 1/-

Unbreakable Erinoid, large ... 1/3

HOLBORN. Aluminium top, needle points ... 1/-

In boxes of 72, assorted colours 6/-

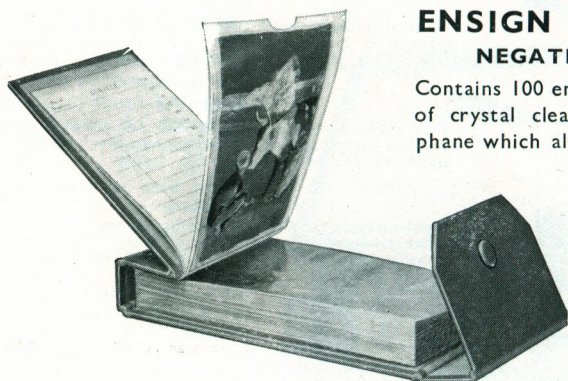


SEE YOUR NEGATIVES CRYSTAL CLEAR

stored in the

ENSIGN CELLOFILE NEGATIVE ALBUM

Contains 100 envelopes, each made of crystal clear untearable cellophane which allows every detail of the negative to be inspected with the greatest ease. An index is provided.



No. 20.	For $2\frac{1}{4} \times 3\frac{1}{4}$ negatives and smaller	3/-
No. 21.	„ $2\frac{1}{2} \times 4\frac{1}{4}$ „ „ „	3/6
No. 22.	„ $4\frac{1}{4} \times 3\frac{1}{4}$ „ „ „	3/6
No. 23.	„ $5\frac{1}{2} \times 3\frac{1}{4}$ (P.C.) „ „	5/-

ENSIGN FILM STORAGE ALBUMS

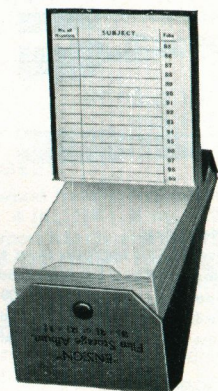
Contains 100 numbered transparent envelopes and index, bound by loose-leaf binder into stout art linen covers. Each envelope is interchangeable and removable. Negatives can be found instantly and moved without interference to others.

No. 15.	$3\frac{1}{4} \times 2\frac{1}{4}$ in. or V.P. negatives	...	2/6
No. 16.	$4\frac{1}{4} \times 2\frac{1}{2}$ in. negatives	...	3/-
No. 17.	$4\frac{1}{4} \times 3\frac{1}{4}$ in. ($\frac{1}{4}$ -plate) negatives	...	3/-
No. 18.	$5\frac{1}{2} \times 3\frac{1}{4}$ in. (Post-card) negatives	...	4/-

NEGATIVE PLATE BOXES

Made in polished pine with combed corners; 50 hardwood grooves and index.

$3\frac{1}{2} \times 2\frac{1}{2}$ in., 5/6; $4\frac{1}{4} \times 3\frac{1}{4}$ in., 6/-; $5\frac{1}{2} \times 3\frac{1}{2}$ in., 7/-;
 $6\frac{1}{2} \times 4\frac{3}{4}$ in., 8/-



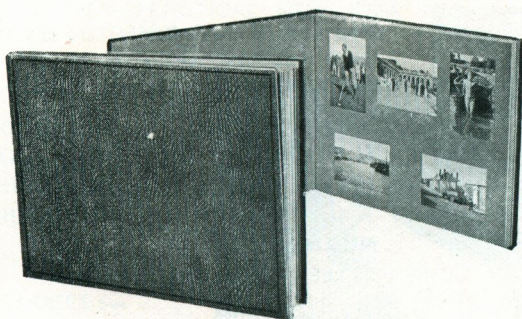
EXPRESS NEGATIVE BOXES

For plates or films, strong outer case covered grain paper with drawer, 50 printed envelopes and title index.

$3\frac{1}{2} \times 2\frac{1}{2}$ in., 3/-; $4\frac{1}{4} \times 3\frac{1}{4}$ in., 3/6; $5\frac{1}{2} \times 3\frac{1}{2}$ in., 4/-

ENSIGN—101 YEARS IN THE SERVICE OF PHOTOGRAPHY AND OPTICS

ENSIGN SLIP-IN ALBUMS



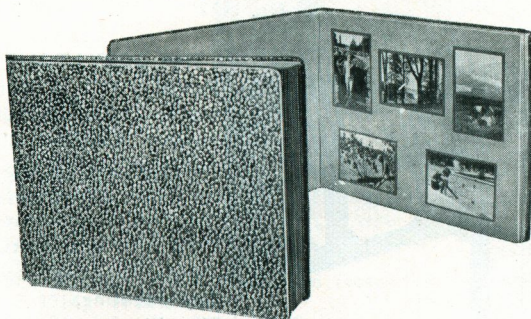
THE LUKOS

A large capacity Album. Embossed antique **leather cloth** cover. Slip-in openings. 5 on a page. For 90 $2\frac{1}{4} \times 3\frac{1}{4}$ prints.

Style I. Brown.

Style II. Grey.

No. 3020 ... 1/6



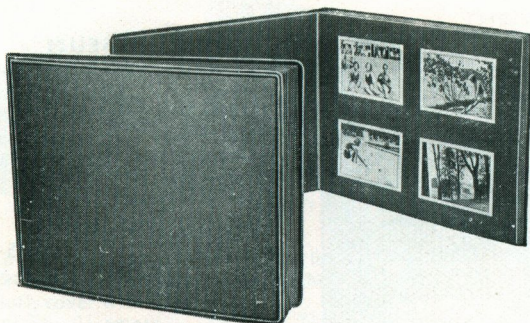
THE GRANITE

Granite marble-relief enamel cover. 8 leaves with up-right and oblong openings with art printed border. For 80 $2\frac{1}{4} \times 3\frac{1}{4}$ prints.

Style I. Brown leaves.

Style II. Grey leaves.

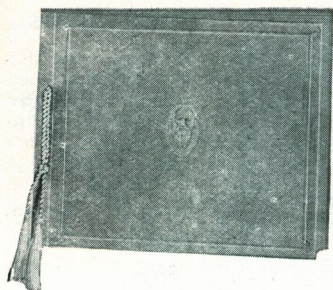
No. 3025 ... 2/6



THE ADEN

Binding of specially selected black cloth, full bound. Matt black art paper leaves with "cutter crushed" matt white surrounds. 4 on a page. For 72 $2\frac{1}{4} \times 3\frac{1}{4}$ prints.

No. 3030 ... 3/6

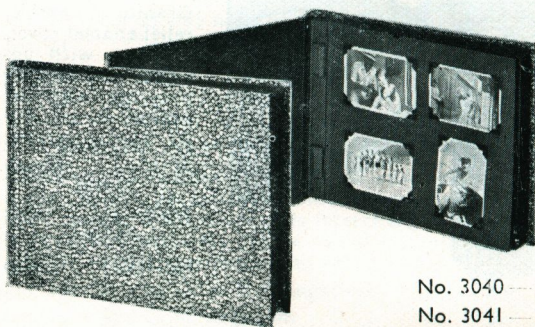


Fine quality stout flexible art covers with embossed device. 16 stout flexible hinged loose leaves to match, tied with silk cord.

STYLES—I Brown. II Grey.

STYLE—Fine quality Black.

Size of leaf	Elmhurst	Nubian		
$8 \times 6\frac{1}{2}$...	No. 492 ...	No. 1470 ...	1/3	
$9\frac{1}{2} \times 8$...	No. 493 ...	No. 1471 ...	1/6	
12×10 ...	No. 494 ...	No. 1472 ...	2/-	



Bound in granite marble - relief enamel cover. Contains 30 heavy art board leaves, very dark grey, blending with cover. Fastened with coin posts. Leaves removable for dry mounting.

No. 3040	$9\frac{3}{4} \times 7\frac{1}{2}$...	2/6
No. 3041	12×10	...	3/6



Rich brown cover of antique leather cloth, embossed in light Rococo style, lined with moiré cloth. 24 removable leaves carried on tubular pillars. $9\frac{3}{4} \times 7\frac{1}{2}$.

Style I. Brown leaves.

Style III. Black leaves.

No. 3000 ... 5/-

Extra leaves 9d. per doz..

ENSIGN POCKET ALBUMS

THE "PRINT-NEG"

A VERY PRACTICAL NEW IDEA FOR
STORING PICTURES AND
NEGATIVES TOGETHER

IDEAL FOR
ALL
MINIATURE
NEGATIVES

PRICES :—

BOOK BOXES
complete with 6
Albums.



6 Albums in a Book Box.



Negatives on the other side.

For miniature negatives.

Each Album takes 6 Prints and Negatives.

No. 3012. Prairie Card Cover ... 1/-

No. 3013. Leather-Cloth ,, ... 2/-

For $2\frac{1}{4} \times 3\frac{1}{4}$ size.

Each Album takes 8 Prints and Negatives.

No. 3014. Prairie Card Cover ... 2/-

No. 3015. Leather-Cloth ,, ... 3/-



Your Complete Collection.

THE POCLETTE

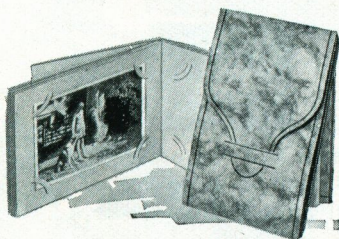
Dainty, yet sturdily made. Stout
slotted leaves, and leatherette cover
with slip tongue. Holds 24 prints.

Style I Brown leaves. II Grey leaves.

No. 2070 For $2\frac{1}{4} \times 1\frac{5}{8}$ (V.P.) Prints $2\frac{1}{2}$ d.

No. 2071 For $2\frac{1}{4} \times 3\frac{1}{4}$ Prints ... 3d.

No. 2072 For $4\frac{1}{4} \times 2\frac{1}{2}$ Prints ... 4d.

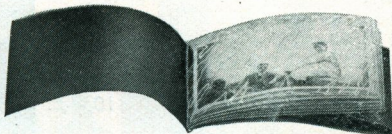


THE CELOPHOT

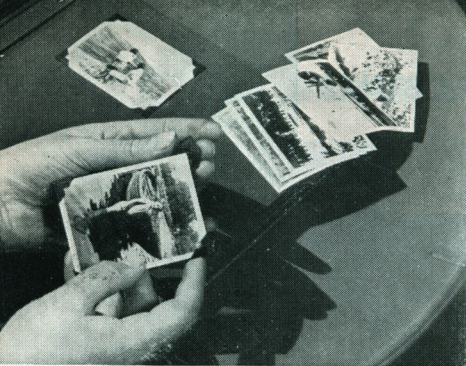
Contains 12 transparent pockets for
24 prints. Flexible black leather
cloth cover with flap.

For $3\frac{1}{2} \times 2\frac{1}{2}$ prints ... $7\frac{1}{2}$ d.

„ $4\frac{1}{4} \times 2\frac{1}{2}$ „ ... 9d.



ENSIGN—101 YEARS IN THE SERVICE OF PHOTOGRAPHY AND OPTICS



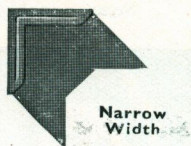
NUACE MOUNTING CORNERS

THE ORIGINAL AND BEST
MOUNTING CORNERS

A NUACE corner is secured to each corner of the print. You then moisten the four corners, gently press the print into album.

Narrow and Standard Widths for small prints. In Brown, Grey, White, Black, Silver, Gilt, Red, Green.

Per packet of 100 (gilt and silver 60 only) ... 6d.



Narrow Width



Standard Width

Overize Width for enlargements. White, Sepia, Black and Grey.

Per packet of 40 ... 6d.

Transparent. The whole surface of the picture mounted always at view. Suits any tone or colour of print or paper.

Per packet of 80 ... 6d.

ENSIGN MOUNTING STAMPS

A clean and quick method of print mounting. A stamp damped on one side is placed in each corner at back of print, then the other side of stamp is damped and pressed into contact of album or mount. The adhesive used will secure thin or thick paper or card perfectly flat.

Pad of 324 perforated stamps ... 3d.

"CLUB" PHOTOGRAPHER MOUNTINGS

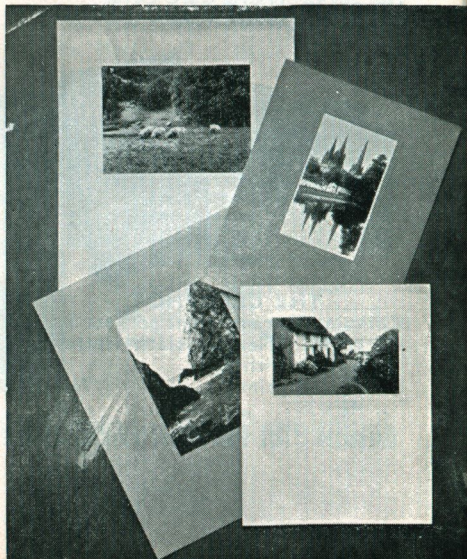
FOR ENLARGEMENTS AND
EXHIBITION PICTURES

Flexible linen-faced mounts in the standard sizes accepted by exhibition committees.

Style I.—
Front Back
Fawn-Cream.

Style II.—
Front Back
Grey-White.

Size				Per doz.
10 × 8	1/6
12 × 10	2/-
15 × 12	3/-
20 × 15½	5/6
24 × 19	10/-



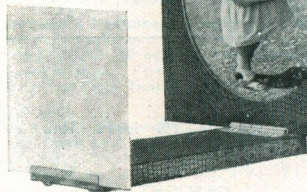
FRAME YOUR "MASTERPIECES" QUICKLY AND ARTISTICALLY IN ENSIGN ARTIST PASSE-PARTOUT FRAMES

The dustproof self-sealing back is a feature. All sizes are fitted with leather board strut and silk hanger.

Style I.—Black binding, white mount. Style III.—Oak binding, cream mount.

For Prints	No.	Glass Size	No.	Glass size	
$3\frac{1}{2} \times 2\frac{1}{2}$ in. ...	6326 upright	8×5 in.	6327 Oblong	8×6 in. ...	1/-
Post-card ...	6320	" 10×6 in.	6321	" 10×8 in. ...	1/6
$\frac{1}{2}$ -plate ...	6328	" 10×7 in.	6329	" 9×7 in. ...	1/6
1/1-plate ...	6330	" 10×8 in.	6331	" 11×9 in. ...	2/6

Ask to see other patterns of Ensign Passe-Partout Frames.



A NOVEL PICTURE VIEWER THE SNAPSCOPE

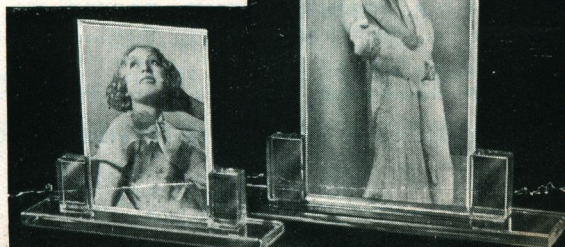
For viewing snapshots. Gives an enlarged and stereoscopic rendering. Wood base, with mirror and spring holder for prints ... 3/6

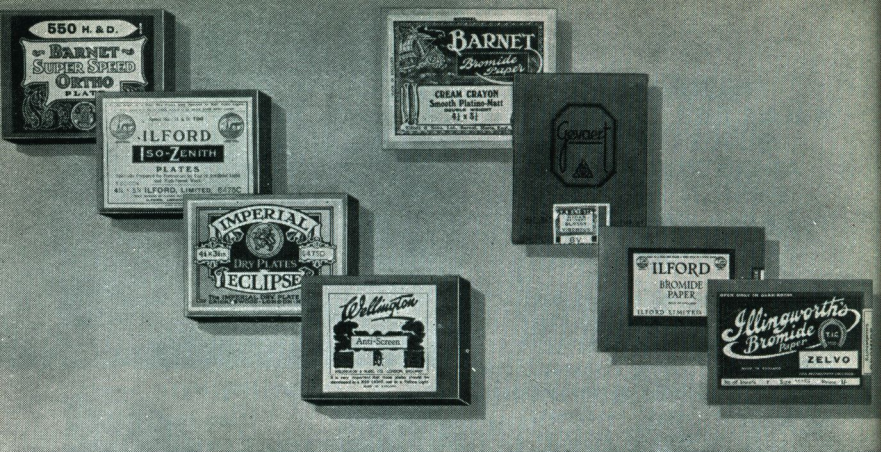
THE "VOGUE"

ALL GLASS FRAME—STRIKINGLY
MODERN—NO METAL PARTS
TO TARNISH

Made entirely of crystal clear glass, these most up-to-date frames consist of a solid glass base, carefully finished, into which are fitted the bevelled edge glass plates which hold the print perfectly flat.

$2\frac{1}{2} \times 3\frac{1}{2}$...	2/9
Post-card ...	4/-
$\frac{1}{2}$ -plate ...	6/6





DRY PLATES AND FLAT CUT FILMS

DRY PLATES :—Barnet, Ilford, Imperial. FLAT FILMS :—Barnet, Ilford, Agfa. All 12 exposures.

Size	Except Panchromatic		Panchromatic	Backing Extra	Flat Films	
					Ortho	Panchromatic and Hyper-Pan
Inches	$\frac{1}{2}$ -doz.	1 doz.	1 doz.	1 doz.	1 doz.	1 doz.
2 $\frac{1}{4}$ \times 1 $\frac{1}{2}$	—	1/4	1/6	4d.	1/4	1/6
3 $\frac{1}{2}$ \times 2 $\frac{1}{2}$	11d.	1/3	1/10	4d.	1/8	1/10
4 $\frac{1}{2}$ \times 3 $\frac{1}{2}$	1 4	2/6	2/9	4d.	2/6	2/9
5 \times 4	2 2	4/2	4/6	6d.
5 $\frac{1}{2}$ \times 3 $\frac{1}{2}$	2 2	4/2	4/6	6d.	4/2	4/6
6 $\frac{1}{2}$ \times 4 $\frac{1}{4}$	2 10	5/6	6/-	9d.	5/6	6/-

Prices of other sizes on application.

LANTERN PLATES

STANDARD. $3\frac{1}{2} \times 3\frac{1}{2}$ in. size : Barnet, Ilford, Imperial Doz. 2/3
 46 \times 107 mm. Size : Ilford, Imperial Thin 1/8 Extra Thin 2/-

GASLIGHT AND BROMIDE PAPERS

BROMIDE :—Barnet, Ilford, Illingworth.

GASLIGHT :—Bar-gas, Selo.

Inches	Sheets	Inches	Sheets	Inches	Sheets
2 \times 1	...	5 $\frac{1}{2}$ \times 3 $\frac{1}{2}$...	10 \times 8	...
3 $\frac{1}{2}$ \times 2	...	6 $\frac{1}{2}$ \times 4 $\frac{1}{2}$...	12 \times 10	...
4 $\frac{1}{2}$ \times 2	...	8 $\frac{1}{2}$ \times 6 $\frac{1}{2}$...	15 \times 12	...
4 $\frac{1}{2}$ \times 3	...				

SELF-TONING PAPERS

Seltona, Gevaert, Enitone. All sizes to $5\frac{1}{2} \times 3\frac{1}{2}$ in. In packets 6d. and 1/-

P.O.P. (PRINTING OUT) PAPERS

Barnet, Ilford. All sizes to $5\frac{1}{2} \times 3\frac{1}{2}$ in. In packets 6d. and 1/-

POST-CARDS $5\frac{1}{2} \times 3\frac{1}{2}$ in. size

Barnet, Ilford, Wellington.

Bromide and Gaslight (9 cards), Self-Toning (8 cards), and P.O.P. (10 cards) 1/-

ENSIGN—101 YEARS IN THE SERVICE OF PHOTOGRAPHY AND OPTICS



JOHNSON'S CHEMICALS

Johnson's Fine Grain Developer

For developing miniature films, where the utmost fineness of grain is required. Tins to make 20 ounces 1/-

Azol—The Correct Developer

A concentrated liquid. Has simple, accurate time and temperature tables. Requires the addition of water only.
3 oz. bottle to make 75 oz. 2/-
8 oz. 4/-

Johnson's Scaloids

Compressed Tablets. Easily dissolved.
Vedol, Amidol, Gaslight, Hydroquinone, Metol-Quinol, Metol, Pyro-Metol, or Pyro-Soda 1/6
Gold Toning and Fixing or Intensifier (re-develop) 2/-
Reducers, Hypo Fixing or Acid Fixing ... 1/-

Johnson's Developer

ONE SOLUTION, for Plates, Films, and Papers
4 oz. bottle to make 23 oz. 1/-
8 oz. bottle to make 56 oz. 1/6
TWO-SOLUTION. In bottles, Pyro-Soda, Metol-Quinol, Pyro-Metol, Hydroquinone.
In 2 oz. pairs making 1 pint 1/6
In 4 oz. pairs making 2 pints 2/6

Johnson's Gaslight Paper Developer

4 oz. bottle to make 10 to 20 oz. ... 10 1/2 d.
8 oz. bottle to make 20 to 40 oz. ... 1 1/3

Johnson's Packets, Developers, etc.

Amidol (4 to 10 oz.) 6 packets ... 2/-
Metol-Quinol (10 oz.), Hydroquinone (8 oz.)
Gaslight (6 oz.), Pyro-Metol (4 oz.), Pyro-Soda (8 oz.), or Gold Toning and Fixing (4 oz.)
6 packets 1/6

Johnson's Mountant

Free from acid and spreads evenly. Tubes each 6d.
Jars ... 4 oz., 1/-; 10 oz., 1/9; 24 oz., 3/-

Sundry Solutions

Gold Toning and Fixing ... 4 oz. 1/-; 10 oz. 2/-
Intensifier uranium ... 3 oz. 1/-; 6 oz. 2/-
Intensifier redeveloper ... Two 4 oz. bottles 2/-
Reducer ... 4 oz. 1/-; 8 oz. 2/-
Matt varnish ... 2 oz. 1/3; 4 oz. 2/6
Negative varnish ... 2 oz. 1/3; 4 oz. 2/6
Dead black ... 2 oz. 1/-; 4 oz. 2/-
White ink ... per bottle, 6d. and 1/-
Retouching medium ... 1 oz. 1/-
Spotting medium ... 1 oz. 1/-
Black waterproof titling ink ... 1 oz. 1/-
Griffith's anti-sulphuric enamel for coating dishes, etc. No. 6 Black 1/2 pint 2/6; 1 pint 4/6
Bate's Dead Black 1/-

Ensign Concentrated Tank Developing, see page 40

Metol-Johnson's*

Can be used as a single developer or with Hydroquinone or Pyro.
10 grammes, 1/3; 1 oz., 2/3; 4 oz., 5/3

Hydroquinone-Johnson's*

Splendid for lantern plates. With Metol-Johnson's, it makes developer for plates and papers.
1 oz. 1/3 4 oz. 3/-

Acid Pyrogallic Johnson's*

(Pure Crystals) 1 oz., 1/9; 4 oz., 4/6

Amidol-Johnson's*

The ideal developer for Bromide paper.
10 grammes, 1/-; 1 oz., 2/-; 4 oz., 5/-

Toning Pactums

Blue, Green, Red or Sepia ... per pkt. 6d.

Septon Toner

One solution, direct toning—no bleaching.
1 oz. bottle ... 1/6 10 oz. bottle ... 6/-

Sepia (Two Solution) Toner

For rich permanent browns, each 1/3 and 2/6

*Prices subject to market fluctuations.

Ensign Glazing Solution

Gives a brilliant gloss to prints without sticking.
10 oz. 1/3 20 oz. 2/-

Acid-Hypo Fixing

Rapid in its action and not excessively acid. For Plates, Films, and Papers, except Self-toning or P.O.P.
4 oz. ... 7d. 8 oz. ... 10d. 16 oz. ... 1/6

Soda Hyposulphate

Finest selected pea crystals, 1 lb. cartons 6d.

Snowheart Hypo Eliminator

(C. Winthrop Somerville's Formula). Eliminates hypo from negatives or prints in three minutes. Each packet is sufficient for 36 1/4-plates.
1 packet 3d. 12 packets ... 2/6

ENSIGN LUKOS and ULTRACHROME FILM

