

GUS HENSCHEN,  
50 West 125th St., New York City.

# KODAKS—1900.



**A** RAPID ADVANCE in the evolution of Kodak Photography has marked the past year. New and valuable additions to the line of pocket instruments have been made, a new Panoram-Kodak at a low price has been introduced, we have placed upon the market a new five dollar Kodak, the Flexo, which is a wonderfully capable instrument for the money and is giving splendid satisfaction, have added the popular  $3\frac{1}{4} \times 4\frac{1}{4}$  size to our line of Cartridge Kodaks, and have as usual made improvements in our established line wherever experience and observation have suggested them.

## Kodak Cartridges.

Decided advances have been made in the manufacture of Transparent Films. We have introduced our Paper-Films, which are low in price, yet give excellent results when used with the development papers, Dekko and Velox. Perhaps, however, there has been no advance which will be more appreciated by the amateur than the introduction of our cartridges for 2 and 6 exposures. That the *Kodak*, with its daylight loading film cartridges for 12 exposures, has always been the most convenient camera for out-

door use is beyond argument. The introduction of the two and six exposure cartridges make it more convenient than the plate camera for work at home. With a Kodak and Kodak Cartridges, no dark room is needed save for the purposes of development. The plate camerist must load his holders in the dark room, often at great inconvenience. The Kodaker can insert and take out cartridges for two, six or twelve exposures at any time and in any place, and can develop them himself at his convenience, or can leave it to another to "do the rest."

Transparent Film Kodak Cartridges for two, six or twelve exposures are furnished in the  $3\frac{1}{2} \times 3\frac{1}{2}$ ,  $3\frac{1}{4} \times 4\frac{1}{4}$ ,  $4 \times 5$  and  $5 \times 7$  sizes. The  $2\frac{1}{4} \times 3\frac{1}{4}$  and  $2\frac{1}{2} \times 4\frac{1}{4}$  sizes are furnished in either six or twelve exposures, the  $1\frac{1}{2} \times 2$  size is furnished in 12 exposures only.

Paper-Film Cartridges are furnished for six or for twelve exposures in all sizes, except the  $1\frac{1}{2} \times 2$ , which is put up in 12 exposure cartridges only.

### **Kodak Quality.**

Kodak lenses, Kodak shutters and Kodak construction are the best. Our system of inspection and of testing insures perfection in every part and absolute precision in adjustment. Kodak lenses are given the most rigid microscopic tests by our own experts, and any that fall short of the highest standard are unhesitatingly rejected. Kodak shutters are worked repeatedly for time and instantaneous exposures before the cameras pass the inspector so that the slightest defect is detected. Indeed it is the high standard of excellence which we demand, coupled with our careful system of inspection at every stage of the work which

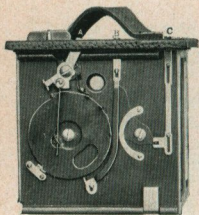
has made the Kodak the standard in hand camera values, the standard by which all other cameras are measured.

To make easy the path to successful photography we give with each Kodak a fully illustrated and carefully written instruction book containing not only full instructions for loading the instrument but comprehensive chapters on "Snap Shots," "Time Exposures," "Flash Lights," "Developing" and "Printing," thus removing the difficulties from the beginner's path, while to those who do not care to go further than making the exposures we say:

*"You press the button, we do the rest."*

EASTMAN KODAK COMPANY,  
Rochester, N. Y.





## Eastman's Improved Rotary Shutter.

The simplicity and absolute reliability of our Rotary Shutter was one of the features which gave to the original Bulls-Eye and to the Pocket Kodak their immense popularity. It is always set. Snap-shots are made by simply pushing the lever "A" alternately to the right or left, thus revolving the metal disc and making the exposure as the opening in disc passes the lens. If, by chance, the lever be pushed in the wrong direction, it will simply remain unmoved and no click will be heard.

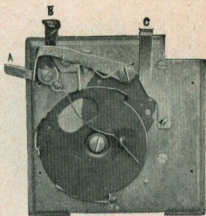
For time exposures the Kodaker simply pulls up the slide "B" and then pushes the lever "A" in one direction to open and in the opposite direction to close the shutter. It will be seen that when the slide "B" is pulled out the shutter strikes as it passes the lens, stopping half way across with the opening over the lens.

The lever "C" controls the stops, of which there are three.

Made with special machinery, by skilled mechanics, this simple mechanism makes an ideal shutter for the hand camera.

The Eastman Rotary Shutter is used on the Pocket Kodak, the No. 2 and No. 4 Bulls-Eye, No. 2 Folding Bulls-Eye, No. 2 and No. 4 Bullet and the No. 2 Flexo Kodaks.

# Eastman Automatic Shutter.

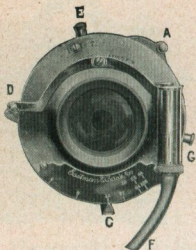


To make a snap-shot: Press down lever "B." To make a time exposure: Press down lever "A" once to open, and again to close the shutter. That's all there is to operating the Eastman Automatic Shutter. It is always set.

The lever "C" operates the stops, of which there are three.

Not only are these shutters made with the finest special machinery and with the utmost care, but they are given a thorough and practical test by experienced inspectors. In fact, all of our shutters are subjected to the most rigid inspection before shipment as a guarantee that every part is perfect and that no error of adjustment has been made in assembling.

The Eastman Automatic Shutter is used on the Folding Pocket Kodaks, No. 1, No. 1A, No. 2 and No. 3.



# Eastman Triple Action Shutter.

This is a shutter with a wide range of action, built with the accuracy of a watch, yet simple, strong, reliable and far more compact than any other shutter of similar capabilities.

For snap-shots place lever "E" at point "I" and set shutter by turning lever "A" to left to limit of motion. Expose by pressing bulb attached to tube "F" or by touching release "D." There are three speeds for instantaneous exposures which are regulated by moving the lever "G."

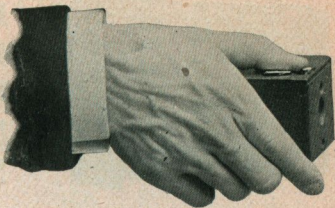
For time exposures place lever "E" at point "T" and set shutter by turning lever "A" to left to limit of motion. Press bulb (or release "D") once to open and again to close shutter.

For short time exposure place lever "E" at "B" and set shutter by moving "A" to left to limit of motion. Press bulb (or finger release D) to open shutter and release it to close shutter. The shutter remains open as long as the bulb remains under pressure and closes the instant it is released.

The stops are operated by moving lever "C" and range from U. S. 4 to U. S. 128.

As furnished with the No. 3, 4 and 5 Cartridge Kodaks this shutter is fitted with pneumatic release operated by bulb. With the No. 2 and No. 4 Bulls-Eye Special and the No. 2 and No. 4 Bullet Special Kodaks it is operated by levers, those for setting the shutter and making the exposure *working from the outside of camera*, so that the front does not have to be opened except to change the adjustment.

# The Pocket Kodak.



For rectangular pictures,  $1\frac{1}{2}$  x 2 inches ; capacity, 12 exposures without reloading ; size of camera,  $2\frac{3}{8}$  x  $2\frac{7}{8}$  x  $3\frac{7}{8}$  inches ; weight, 6 ounces ; length of focus of lens,  $2\frac{1}{2}$  inches.

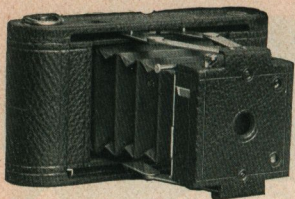
- This is the original daylight loading pocket instrument, improved, of course, since the earlier models, and though small in size, it is in every way a perfect camera. Indeed, in the quality of the work which they accomplish, the Pocket Kodaks equal the most expensive cameras and make negatives of such sharpness that enlargements of any size can be made from them.

Pocket Kodaks have carefully tested lenses with a fixed focus of sufficient length to avoid distortion, they have our Rotary shutter described on page 4, sets of three stops, square finder, are of perfect construction and are covered with fine seal grain leather.

Can be readily carried on the bicycle by use of our special cases.

Pocket Kodak covered with fine leather, with roll of film for 12 exposures,	-	-	-	\$5.00
Leather Hand Carrying Case (for Pocket Kodak and three extra spools of film.)	-	-	-	
Price of case only,	-	-	-	.75
Transparent Film Cartridge, 12 ex.,	-	-	-	.25
Paper-Film Cartridge, 12 ex.,	-	-	-	.20





## **Folding Pocket Kodaks No. 1 and No. 1 A.**

In the Folding Pocket Kodaks we have adapted the Film Cartridge system to instruments that have well been called "Photographic Pocket Pieces."

The lenses used in these instruments are specially ground, are meniscus achromatic and are carefully tested by an experienced inspector. They are in short the finest achromatic lenses that can be made, covering the plate clear and sharp to the very corners.

The shutters are the Eastman Automatic described on page 5, and are equipped with a set of three stops.

These Kodaks have two view finders, one for vertical and one for horizontal exposures. There are no loose parts to become lost or mislaid, and to load is simplicity itself. Made of aluminum, covered with the finest black morocco, with handsomely nickeled fittings. In short, they are instruments of the finest quality and workmanship, but of the smallest compass; and though practical pocket cameras, make pictures of good size and of artistic shape and so sharp that they can be enlarged to any size.

Can be readily carried on the bicycle by the use of the hand cases and our special clamps.

# Folding Pocket Kodak

## No. 1.

For rectangular pictures  $2\frac{1}{4} \times 3\frac{1}{4}$  inches ; capacity, 12 exposures without reloading ; size of Kodak,  $1\frac{5}{8} \times 3\frac{1}{2} \times 6\frac{1}{4}$  inches ; weight,  $14\frac{1}{2}$  ounces ; length of focus of lens, 4 inches.

### PRICE.

No. 1 Folding Pocket Kodak with achromatic lens, not loaded	\$10.00
Transparent Film Cartridge, 12 ex., $2\frac{1}{4} \times 3\frac{1}{4}$ ,	.40
Do., 6 ex.,	.20
Paper-Film Cartridge, 12 ex., $2\frac{1}{4} \times 3\frac{1}{4}$ ,	.30
Do., 6 ex.,	.15
Black Sole Leather Carrying Case,	1.25

---

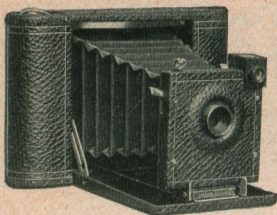
# Folding Pocket Kodak

## No. 1 A.

For rectangular pictures  $2\frac{1}{2} \times 4\frac{1}{4}$  inches ; capacity, 12 exposures without reloading ; size of Kodak,  $1\frac{3}{4} \times 3\frac{7}{8} \times 7\frac{3}{4}$  inches ; weight,  $17\frac{1}{2}$  ounces ; length of focus of lens, 5 inches.

### PRICE.

Folding Pocket Kodak No. 1 A, with achromatic lens, not loaded,	\$12.00
Transparent Film Cartridge, 12 ex., $2\frac{1}{2} \times 4\frac{1}{4}$ ,	.50
Do., 6 ex.,	.25
Paper-Film Cartridge, 12 ex., $2\frac{1}{2} \times 4\frac{1}{4}$ ,	.35
Do., 6 ex.,	.18
Black Sole Leather Carrying Case,	1.25



## No. 2 Folding Pocket Kodak.

For square pictures  $3\frac{1}{2} \times 3\frac{1}{2}$  inches; capacity, 12 exposures without reloading; size of Kodak,  $1\frac{1}{2} \times 4\frac{1}{2} \times 6\frac{3}{4}$  inches; weight,  $16\frac{1}{2}$  ounces, length of focus of lens,  $4\frac{1}{2}$  inches.

In the No. 2 Folding Pocket Kodak we have adapted the popular  $3\frac{1}{2} \times 3\frac{1}{2}$  size to a pocket instrument of extreme lightness and mechanical perfection. It slips readily into an ordinary coat pocket and being in every way equipped for the best photographic work it marks a distinct advance in Pocket Photography.

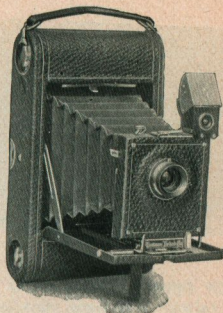
The lenses are the finest meniscus achromatic, having wonderful depth, definition and speed and cover fully with the largest stop opening and have a fixed focus of  $4\frac{1}{2}$  inches.

Fitted with Eastman Automatic shutter, described on page 5, with set of three stops, socket for tripod screw and square finder. Made of aluminum, covered with the finest black morocco, with handsomely nickeled fittings, it is at once strong, dainty and durable.

Can be readily carried on the bicycle by the use of the regular hand case and our special clamps.

No. 2 Folding Pocket Kodak with achromatic lens, not loaded,	-	-	\$15.00
Transparent Film Cartridge, 12 ex., $3\frac{1}{2} \times 3\frac{1}{2}$ ,	-	-	.60
Do., 6 ex.,	-	-	.30
Do., Box 2 Cartridges, 2 ex. each (4 ex.),	-	-	.25
Paper-Film Cartridge, 12 ex., $3\frac{1}{2} \times 3\frac{1}{2}$ ,	-	-	.40
Do., 6 ex.,	-	-	.20
Black Sole Leather Carrying Case,	-	-	1.25

# No. 3 Folding Pocket Kodak.



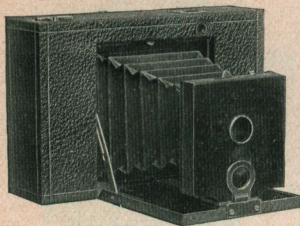
For rectangular pictures,  $3\frac{1}{4} \times 4\frac{1}{4}$  inches ; capacity, 12 exposures without reloading ; size of camera,  $1\frac{5}{8} \times 4\frac{3}{8} \times 7\frac{1}{4}$  in.; weight, 22 ozs.; length of focus of lens, 5 inches.

The No. 3 Folding Pocket Kodak marks the highest achievement in pocket photography. Although readily fitting the pocket this Kodak has the capabilities of cameras of triple the bulk. The lens is rapid rectilinear and carefully tested, the shutter is the Eastman Automatic, described on page 5, and is fitted with a set of three stops. Reversible finder with hood, index for focusing, tripod socket for horizontal exposures.

Made of aluminum and covered with the finest black morocco, with full nickel fittings, this instrument will prove the ideal camera for those who demand the highest excellence in camera construction, yet desire a pocket instrument. Can be readily carried on the bicycle by the use of our special cases.

No. 3 Folding Pocket Kodak, with rapid rectilinear lens (not loaded),	- \$17.50
Transparent Film Cartridges, 12 ex., $3\frac{1}{4} \times 4\frac{1}{4}$ inches,	- .70
Do., 6 ex.,	- .35
Do., Box 2 Cartridges, 2 ex. each (4 ex.),	- .30
Paper-Film Cartridge, 12 ex., $3\frac{1}{4} \times 4\frac{1}{4}$ ,	- .50
Do., 6 ex.,	- .25
Black Sole Leather Carrying Case, with shoulder strap,	- 1.25





## No. 2 Folding Bulls- Eye Kodak.

For square pictures  $3\frac{1}{2} \times 3\frac{1}{2}$  inches; capacity, 12 exposures without reloading; size of camera closed,  $1\frac{3}{4} \times 4\frac{5}{8} \times 7\frac{1}{8}$  inches; weight, 15 ounces; length of focus of lens,  $4\frac{1}{2}$  inches.

Being but  $1\frac{3}{4}$  inches in thickness when closed is very convenient to carry. Will go in an ordinary overcoat pocket. This instrument is an adaptation of the well-known Bulls-Eye camera to the folding form and though not quite so compact as the Folding Pocket Kodaks, it is in every way an efficient and reliable camera, capable of the highest grade of work. Fitted with fixed focus, achromatic lens, set of three stops, socket for tripod screw and improved Rotary shutter described on page 4. Handsomely finished with fine grain leather covering.

Can be readily carried on the bicycle by use of our special clamps and the regular hand case.

No. 2 Folding Bulls-Eye Kodak, for $3\frac{1}{2} \times 3\frac{1}{2}$ pictures,	-	\$10.00
Transparent Film Cartridge, 12 ex., $3\frac{1}{2} \times 3\frac{1}{2}$ ,	-	.60
Do., 6 ex.,	-	.30
Do., box 2 cartridges, 2 ex. each (4 ex.),	-	.25
Paper-Film Cartridge, 12 ex., $3\frac{1}{2} \times 3\frac{1}{2}$ ,	-	.40
Do., 6 ex.,	-	.20
Black Sole Leather Carrying Case with strap,	-	1.25

# No. 2

## Flexo

## Kodak.



For square pictures  $3\frac{1}{2} \times 3\frac{1}{2}$  inches; capacity, 12 exposures without reloading; size of camera,  $4\frac{3}{8} \times 4\frac{1}{2} \times 5\frac{7}{8}$  inches; weight, 19 ozs.; length of focus of lens,  $4\frac{1}{2}$  inches.

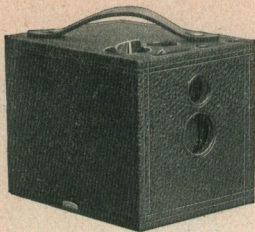
The No. 2 Flexo is a well-made instrument in every respect and is fitted with fixed focus achromatic lens, set of three stops, socket for tripod screw and our improved Rotary shutter, described on page 4.

Well made, covered with grain leather and handsomely finished.

Can be carried on bicycle by use of our special cases.

**NOTE**—The prospective purchaser should bear in mind that the price of the Flexo Kodak includes every requisite for taking pictures except the film, whereas the price of most of the so-called five-dollar plate cameras includes only one plate holder, and a further expenditure of \$2 or \$3 is necessary if it is desired to make more than two exposures between each trip to the dark room.

No. 2 Flexo Kodak, with achromatic lens, not loaded,	-	\$5.00
Transparent Film Cartridge, 12 ex., $3\frac{1}{2} \times 3\frac{1}{2}$ ,	-	.60
Do., 6 ex., - - - - -	-	.30
Do., Box 2 Cartridges, 2 ex. each (4 ex.), - - -	-	.25
Paper-Film Cartridge, 12 ex., $3\frac{1}{2} \times 3\frac{1}{2}$ , - - -	-	.40
Do., 6 ex., - - - - -	-	.20
Black Sole Leather Carrying Case with shoulder strap,	-	1.25



## No. 2 Bulls-Eye Kodak.

For square pictures,  $3\frac{1}{2} \times 3\frac{1}{2}$  inches; capacity, 12 exposures without reloading; size of camera,  $4\frac{1}{2} \times 4\frac{1}{2} \times 5\frac{3}{4}$  inches; weight, 24 ounces; length of focus of lens,  $4\frac{1}{2}$  inches.

Simple, practical and reliable, the Bulls-Eye is the prime favorite with hundreds of thousands of amateurs the world over. Though simple of manipulation, it is a high grade camera in every sense and capable of producing the very best results. Indeed, the No. 2 Bulls-Eye was the pioneer cartridge system camera, but by constant improvement it has been kept fully up-to-date and has more than retained its popularity.

Fitted with fixed focus, meniscus achromatic lens of the finest quality, set of three stops, socket for tripod screw, and improved Rotary shutter described on page 4. Handsomely finished, with fine seal grain leather covering and nickeled fittings. Can be carried on bicycle by use of our special cases.

No. 2 Bulls-Eye Kodak, fitted with achromatic lens, not loaded,	-	-	\$8.00
Transparent Film Cartridge, 12 exs., $3\frac{1}{2} \times 3\frac{1}{2}$ ,	-	-	.60
Do., 6 ex.,	-	-	.30
Do., Box 2 cartridges, 2 ex. each (4 ex.),	-	-	.25
Paper-Film Cartridge, 12 ex., $3\frac{1}{2} \times 3\frac{1}{2}$ ,	-	-	.40
Do., 6 ex.,	-	-	.20
Black Sole Leather Carrying Case, with shoulder strap,	-	-	1.25

# No. 2 Bulls-Eye Special Kodak.



For square pictures  $3\frac{1}{2} \times 3\frac{1}{2}$  inches; capacity, 12 exposures without reloading; size of camera,  $4\frac{1}{2} \times 4\frac{5}{8} \times 6\frac{3}{4}$  inches; weight, 28 ounces; length of focus of lens,  $5\frac{3}{8}$  inches.

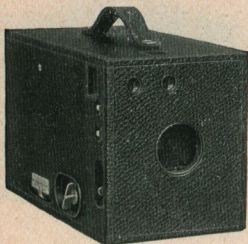
This instrument combines the extreme simplicity of the No. 2 Bulls-Eye with a shutter and lens of the finest quality.

It has the Eastman triple action shutter described on page 6, fitted with iris diaphragm stops graduated for Nos. 4 to 128, and no expense has been spared in fitting it with a lens of the finest quality. The lens has a fixed focus of  $5\frac{3}{8}$  inches, is strictly rectilinear and very rapid, with wonderful depth and definition. Every lens being carefully tested by our own expert, the highest quality will be maintained.

This Kodak has square finder, socket for tripod screw, nicked fittings, is covered with fine black morocco and beautifully finished. Can be carried on bicycle by use of our special cases.

No. 2 Bulls-Eye Special Kodak, with rapid rectilinear lens,			
not loaded,	-	-	\$15.00
Transparent Film Cartridge, 12 ex., $3\frac{1}{2} \times 3\frac{1}{2}$ ,	-	-	.60
Do., 6 ex.,	-	-	.30
Do., Box 2 cartridges, 2 ex. each (4 ex.),	-	-	.25
Paper-Film Cartridge, 12 ex., $3\frac{1}{2} \times 3\frac{1}{2}$ ,	-	-	.40
Do., 6 ex.,	-	-	.20
Black Sole Leather Carrying Case with shoulder strap,	-	-	1.25





# No. 4

## Bulls-Eye

## Kodak.

For rectangular pictures, 4 x 5 inches; capacity, 12 exposures without reloading. Size of camera, 5 x 5 $\frac{7}{8}$  x 9 $\frac{1}{4}$  inches; weight, 2 pounds, 10 ounces; length of focus of lens, 6 $\frac{1}{4}$  inches.

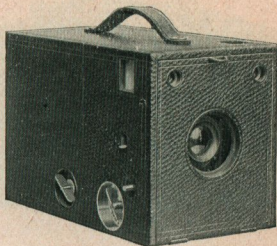
The No. 4 Bulls-Eye is fitted with an achromatic lens of superior quality, having a set of three stops; has two finders, one for vertical and one for horizontal exposures; and is also provided with two sockets for tripod screws, one for vertical and one for horizontal exposures. Fitted with our improved Rotary shutter, described on page 4, and has a carefully adjusted focusing scale. Handsome finish, nickel fittings, covered with fine seal grain leather.

In every way an efficient, convenient and reliable instrument and is capable of the best photographic work.

No. 4 Bulls-Eye Kodak, fitted with achromatic lens, not

loaded,	-	-	-	-	-	-	-	\$12.00
Transparent Film Cartridge, 12 ex., 4 x 5,	.	.	.	.	.	.	.	.90
Do., 6 ex., -	-	-	-	-	-	-	-	.45
Do., Box 2 cartridges, 2 ex. each (4 ex.),	-	-	-	-	-	-	-	.35
Paper-Film Cartridge, 12 ex., 4 x 5,	-	-	-	-	-	-	-	.60
Do., 6 ex., -	-	-	-	-	-	-	-	.30
Black Sole Leather Carrying Case, with shoulder strap,	-	-	-	-	-	-	-	2.00

# No. 4 Bulls- Eye Special Kodak.



For rectangular pictures, 4 x 5 inches; capacity, 12 exposures without reloading; size of camera, 5 x 5 $\frac{7}{8}$  x 8 $\frac{3}{4}$  inches; weight, 2 lbs., 12 ozs.; length of focus of lens, 6 $\frac{1}{2}$  inches.

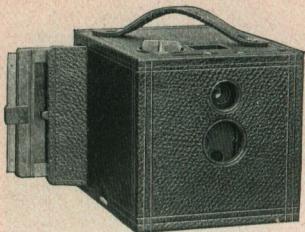
This instrument combines with the simplicity of the original No. 4 Bulls-Eye, a rapid rectilinear lens of superior quality and the Eastman triple action shutter, described on page 6.

Fitted with two finders, one for vertical and one for horizontal exposures, and two sockets for tripod screws and a carefully adjusted focusing scale.

The construction is of the strongest, the finish rich and elegant. The No. 4 Bulls-Eye Special is the most convenient of high-grade 4 x 5 cameras, and will be appreciated by those who demand the very best in camera construction, but prefer the box to the folding form. Covered with fine morocco with nickeled fittings

No. 4 Bulls-Eye Special Kodak, rapid rectilinear lens, Eastman triple action shutter, with iris diaphragm stops, not loaded,

Transparent Film Cartridge, 12 ex., 4 x 5,	-	-	-	\$20.00
Do., 6 ex.,	-	-	-	.90
Do., Box 2 cartridges, 2 ex. each (4 ex.),	-	-	-	.45
Paper-Film Cartridge, 12 ex.,	-	-	-	.35
Do., 6 ex.,	-	-	-	.60
Black Sole Leather Carrying Case,	-	-	-	.30
				2.00



# No. 2 Bullet Kodak.

**Films and  
Plates.**

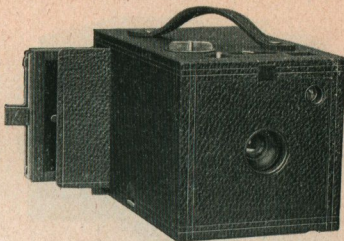
For square pictures,  $3\frac{1}{2} \times 3\frac{1}{2}$  inches; capacity, 12 exposures without reloading; size of camera,  $4\frac{5}{8} \times 4\frac{3}{4} \times 6\frac{1}{4}$  inches; weight, 26 ounces; length of focus of lens,  $4\frac{1}{2}$  inches.

The Improved Bullet uses either roll films or glass plates (with plates the picture is  $3\frac{1}{4} \times 3\frac{1}{2}$  inches), and whether used for Film Cartridges or glass plates is a complete and compact instrument of great capabilities. It is fitted with the finest fixed focus, meniscus achromatic lens, set of three stops, square finder, socket for tripod screw, and has our improved Rotary shutter described on page 4.

Handsome finish, nickel fittings, covered with the finest black grain leather. Can be carried on bicycle by use of our special cases.

No. 2 Bullet Kodak, fitted with achromatic lens (not loaded),				\$10.00
Transparent Film Cartridge, 12 ex., $3\frac{1}{2} \times 3\frac{1}{2}$ ,	-	-	-	.60
Do., 6 ex., - - - - -	-	-	-	.30
Do., box 2 cartridges, 2 ex. each (4 ex.),	-	-	-	.25
Paper-Film Cartridge, 12 ex., $3\frac{1}{2} \times 3\frac{1}{2}$ ,	-	-	-	.40
Do., 6 ex., - - - - -	-	-	-	.20
Single Plate Holders, $3\frac{1}{4} \times 3\frac{1}{2}$ , each,	-	-	-	.60
Black Sole Leather Carrying Case, with shoulder strap,	-	-	-	1.25

# No. 2 Bullet Special Kodak.



Films and  
Plates.

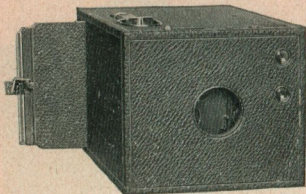
For square pictures,  $3\frac{1}{2} \times 3\frac{1}{2}$  inches; capacity, 12 exposures without reloading; size of camera,  $4\frac{3}{4} \times 4\frac{3}{4} \times 7\frac{1}{2}$  inches; weight, 2 lbs. 1 oz.; length of focus of lens,  $5\frac{3}{8}$  inches.

This instrument combines the extreme simplicity of the Cartridge System with a shutter and lens of the finest quality and can be used with film cartridges or glass plates. (With plates the picture is  $3\frac{1}{4} \times 3\frac{1}{2}$  inches.) The shutter is the Eastman triple action described on page 6, and is fitted with iris diaphragm stops, Nos. 4 to 128.

The lens has a fixed focus of  $5\frac{3}{8}$  inches, is strictly rectilinear and very rapid with wonderful depth and definition. Square finder, socket for tripod screw, covered with fine black morocco. Nickel fittings and beautiful finish. Can be carried on bicycle by use of our special cases.

No. 2 Bullet Special Kodak, with rapid rectilinear lens, (not loaded),	-	\$18.00
Transparent Film Cartridge, 12 ex., $3\frac{1}{2} \times 3\frac{1}{2}$ ,	-	.60
Do., 6 ex.,	-	.30
Do., box 2 cartridges, 2 ex. each (4 ex.),	-	.25
Paper-Film Cartridge, 12 ex., $3\frac{1}{2} \times 3\frac{1}{2}$ ,	-	.40
Do., 6 ex.,	-	.20
Double Plate Holders, $3\frac{1}{4} \times 3\frac{1}{2}$ each,	-	1.00
Black Sole Leather Carrying Case, with shoulder strap,	-	1.25





# No. 4 Bullet Kodak.

Films and  
Plates.

For rectangular pictures, 4 x 5 inches; capacity 12 exposures without reloading; size of camera,  $5\frac{1}{4}$  x 6 x  $9\frac{1}{4}$  inches; weight, 3 pounds; length of focus of lens,  $6\frac{1}{4}$  inches.

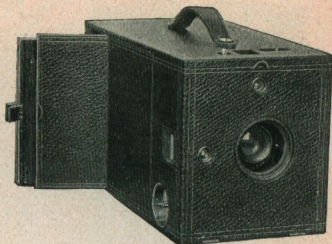
The No. 4 Bullet uses either roll films or glass plates, and it is fitted with an achromatic lens, set of three stops, two finders, one for vertical and one for horizontal exposures, focusing index, two sockets for tripod screw, and has our improved Rotary shutter, described on page 4.

Whether used for films or plates it is a most compact and convenient camera. When used with plates it may be focused either with the index or on the ground glass. Handsome finish, with nickel fittings, and covered with fine grain leather.

No. 4 Bullet Kodak, fitted with achromatic lens, not loaded,				\$15.00
Transparent Film Cartridge, 12 ex., 4 x 5,	-	-	-	.90
Do., 6 ex.,	-	-	-	.45
Do., Box 2 cartridges, 2 ex. each (4 ex.),	-	-	-	.35
Paper-Film Cartridge, 12 ex., 4 x 5,	-	-	-	.60
Do., 6 ex.,	-	-	-	.30
Single Plate Holders (4 x 5 inches,) each,	-	-	-	.75
Black Sole Leather Carrying Case, with shoulder strap,	-	-	-	2.00

# No. 4 Bullet Special Kodak.

Films and  
Plates.

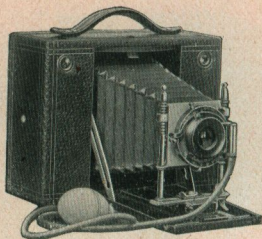


For rectangular pictures, 4 x 5 inches: capacity, 12 exposures without reloading; size of camera,  $5\frac{1}{2}$  x  $6\frac{1}{4}$  x  $10\frac{3}{4}$  inches; weight, including roll holder, 3 lbs., 12 ozs.; length of focus of lens,  $6\frac{1}{2}$  inches.

Adapted to either plates or film cartridges. Has the finest rapid rectilinear lenses, Eastman triple action shutter, described on page 6, fitted with iris diaphragm stops from No. 4 to No. 128. Unlike the other Kodaks the roll holder is detachable (the regular No. 4 Horizontal Cartridge Roll Holder), and being equipped with a dark slide is interchangeable with plate holders in the field and permits of focusing on the ground glass when using film.

Fitted with finders and tripod sockets for both vertical and horizontal exposures and has carefully adjusted focusing scale. Handsome leather covering, nickeled fittings.

No. 4 Bullet Special Kodak, for film or plates, including Cartridge Roll Holder, and one Double Plate Holder, (not loaded),	-	\$25.00
Do., with one Double Plate Holder, but without Roll Holder,	-	20.00
Cartridge Roll Holder for No. 4 Bullet Special,	-	5.00
4 inch Transparent Film Roll Holder Cartridge, 12 ex., 4 x 5,	-	.90
Double Plate Holders, 4 x 5 inches, each,	-	1.00
Black Sole Leather Carrying Case,	-	2.25



# No. 3 Cartridge Kodak.

**Films  
and Plates.**

For rectangular pictures,  $4\frac{1}{4} \times 3\frac{1}{4}$  inches; capacity, 12 exposures without reloading; size, closed,  $2\frac{3}{4} \times 5\frac{1}{4} \times 7\frac{1}{2}$  inches; weight, 2 lbs., 5 ozs.; length of focus of lens, 6 inches.

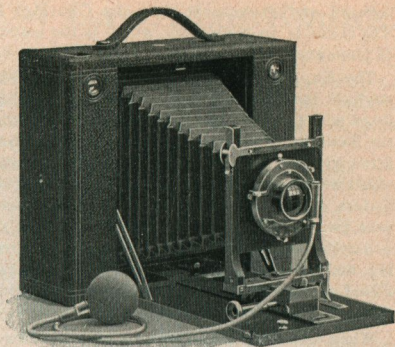
This Kodak will meet the demand for a small and compact instrument of the very highest type. The lens is a rapid rectilinear of great speed, the shutter the Eastman triple action described on page 6, with iris diaphragm stops from 4 to 128. Fitted with rising and sliding front, focusing scale, two brilliant finders and two tripod sockets. The bed is of aluminum, blackened, all other exposed metal parts are polished or nickered, and the covering is the finest black morocco, thus combining lightness and strength with elegance of finish.

Uses plates by the addition of adapter and plate holders.

Can be carried on a bicycle by the use of our special cases.

*No. 3 Cartridge Kodak, rapid rectilinear lens, Eastman triple action shutter, with iris diaphragm stops, not loaded,				\$20.00
Transparent Film Cartridge, 12 ex., $4\frac{1}{4} \times 3\frac{1}{4}$ ,	-	-	-	.70
Do., 6 ex.,	-	-	-	.35
Do., Box 2 cartridges, 2 ex. each, (4 ex.),	-	-	-	.30
Paper-Film Cartridge, 12 ex., $4\frac{1}{4} \times 3\frac{1}{4}$ ,	-	-	-	.50
Do., 6 ex.,	-	-	-	.25
Glass Plate Adapter, with ground glass,	-	-	-	2.00
Double Plate Holders, each,	-	-	-	1.00
Black Sole Leather Carrying Case, with shoulder strap,	-	-	-	1.50

\*This Kodak can be fitted with Unicum shutter and Bausch & Lomb Zeiss-Anastigmat lens No. 1, Series IIa, at an *extra charge* of \$31.00.



## Cartridge Kodaks, Nos. 4 and 5.

In the Cartridge Kodaks we have adapted the "Film Cartridge System" to Folding Kodaks of the finest quality and greatest capabilities. They are hardly more than half the thickness of other cameras which are adapted to both film and plates and are the only folding instruments capable of taking 4 x 5 and 5 x 7 pictures and having the daylight loading feature. We never place a camera upon the market until we have thoroughly tested its actual working qualities under all conditions and the finished product is always an improvement over the first model; but in our years of experience in camera making no instrument which we have introduced has been more carefully planned, more severely tested, or has been the subject of more



thought and experiment than the Cartridge Kodak. The result is an instrument which is the embodiment of photographic perfection.

The No. 4 and 5 Cartridge Kodaks use either our daylight loading Film Cartridges or glass plates, are fitted with carefully tested rapid rectilinear lenses and the Eastman triple action shutter described on page 6, fitted with iris diaphragm stops for Nos. 4 to 128. Provided with rising, sliding and falling fronts, two view finders, one for vertical and one for horizontal exposures, two sockets for tripod screws, Eastman's patent non-collapsing bellows, rack and pinion for fine focusing, and are equally perfect as hand or tripod cameras. Fitted with index for focusing and when used with plates may be focused on the ground glass if desired.

When used with film there are no projecting parts, no attachments to become lost, no extras to be mislaid. The plate adapter is simple and compact and can be put in place or removed in five seconds.

Both the No. 4 and No. 5 Cartridge Kodaks are perfectly adapted to use on the wheel and can be readily carried by the use of our special cases. Can be fitted with wide angle lenses, the cells of which fit the regular shutter.

Strength and reliability have not been sacrificed to mere lightness, nor efficiency to compactness. The finish is rich and beautiful. When closed for carrying the Cartridge Kodak is inconspicuous, there being no metal parts in sight, even the key, which is in the bottom of the camera, being recessed and entirely hidden from view. When open for use these instruments expose to view a bed and front board of highly polished mahogany with buffed brass fittings. In short, they have in a superlative degree, that rich and dainty finish which characterizes all our goods.

# No. 4 Cartridge Kodak.

## Films and Plates.

For rectangular pictures, 4 x 5 inches; capacity, 12 exposures without reloading; size of camera,  $3\frac{1}{8} \times 6\frac{3}{8} \times 8\frac{1}{4}$ ; weight, 3 pounds; length of focus of lens,  $6\frac{1}{2}$  inches.

\*No. 4 Cartridge Kodak with Rapid Rectilinear Lens and Eastman Triple Action Pneumatic Shutter (not loaded), \$25.00

Transparent Film Cartridge, 12 exposures, 5 x 4 inches,	.90
Do., 6 exposures, - - - - -	.45
Do., box 2 cartridges, 2 exposures each, (4 ex.), - - -	.35
Paper-Film Cartridge, 12 exposures, 5 x 4 inches, - - -	.60
Do., 6 exposures, - - - - -	.30
Glass plate adapter with ground glass, - - - - -	2.50
Double glass plate holders, each, - - - - -	1.00
Wide angle lens, - - - - -	5.00
Black Sole Leather Carrying Case, - - - - -	2.00

\*This Kodak can be fitted with Bausch & Lomb Iris diaphragm shutter and No. 2 Series II a, Zeiss Anastigmat lens at an *extra charge* of \$41.00.

# No. 5 Cartridge Kodak.

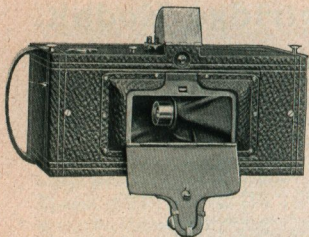
## Films and Plates.

For rectangular pictures, 7 x 5 inches; capacity, 12 exposures without reloading; size of camera,  $3\frac{1}{4} \times 8\frac{1}{2} \times 10\frac{1}{8}$ ; weight, 4 pounds, 4 ounces; length of focus of lens,  $8\frac{1}{2}$  inches.

\*No. 5 Cartridge Kodak, with Rapid Rectilinear lens and Eastman Triple Action Pneumatic Shutter (not loaded), \$35.00

Transparent Film Cartridge, 12 exposures, 7 x 5 inches,	1.60
Do., 6 exposures, - - - - -	.80
Do., box 2 cartridges, 2 exposures each, (4 ex.), - - -	.60
Paper-Film Cartridge, 12 exposures, 7 x 5, - - - - -	1.00
Do., 6 exposures, - - - - -	.50
Glass plate adapter with ground glass, - - - - -	3.00
Double glass plate holders, each, - - - - -	1.25
Wide angle lens, - - - - -	7.50
Black Sole Leather Carrying Case, - - - - -	2.50

\*This Kodak can be fitted with Bausch & Lomb Iris diaphragm shutter and No. 3 Series II a, Zeiss Anastigmat lens at an *extra charge* of \$50.50.



# No. 1 Panoram- Kodak.

## Uses No. 1 Folding Pocket Kodak Cartridges.

For pictures  $2\frac{1}{4} \times 7$  inches; capacity, six exposures without reloading; size of camera,  $3\frac{3}{4} \times 4\frac{1}{4} \times 7\frac{1}{2}$  inches; weight, 23 ozs.; length of focus of lens, 3 9-16 inches.

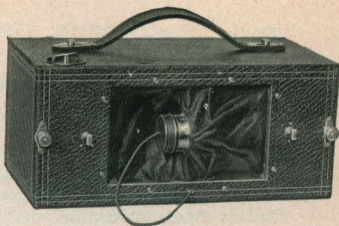
With a scope of view of  $112^\circ$ , the No. 1 Panoram-Kodak offers in compact and convenient form an instrument capable of taking panoramic views in all their breadth and beauty. It will perfectly fill this niche in the photographer's outfit, but of course is not intended for interiors or time exposures.

This instrument has a carefully tested lens, improved two-speed shutter, spirit level, a finder which shows the sky and foreground but which does not of course give the full scope of view, and is fitted with tripod socket. V shaped lines on top show the operator the scope of view. Has nicked fittings, is covered with the finest black morocco and is beautifully finished.

No. 1 Panoram-Kodak, not loaded,	-	-	-	-	\$10.00
Transparent Film Cartridge, 6 exposures, $2\frac{1}{4} \times 7$ (Regular	-	-	-	-	
No. 1 Folding Pocket Kodak Cartridge),	-	-	-	-	.40
Do., 3 exposures,	-	-	-	-	.20
Paper-Film Cartridge, 6 exposures, $2\frac{1}{4} \times 7$ ,	-	-	-	-	.30
Do., 3 exposures,	-	-	-	-	.15
Black Sole Leather Carrying Case with shoulder strap,	-	-	-	-	1.75

# No. 4

## Panoram= Kodak.



### Uses No. 4 Bulls-Eye Cartridges.

For pictures  $3\frac{1}{2} \times 12$  inches; capacity 5 exposures without reloading; size of camera,  $4\frac{1}{2} \times 5\frac{1}{2} \times 10\frac{1}{4}$  inches; weight, 2 lbs., 6 ozs.; length of focus of lens, 5 inches.

Broad landscapes, views of cities from high buildings, the intersections of wide streets, river and marine views—all offer to the photographer beautiful panoramic effects that are well worth preserving. It is to put into his hands an instrument capable of taking such views that we offer the Panoram-Kodak. It is not intended for interiors or time exposures.

The No. 4 Panoram-Kodak has a scope of view  $142^\circ$ , with a rapid rectilinear 5-inch focus lens, revolving through the arc of the circle and covering fully. Space in back provides for carrying two extra film cartridges. Fitted with tripod socket. Has nicked fittings, is covered with the finest black morocco and beautifully finished.

No. 4 Panoram-Kodak, rapid rectilinear lens, not loaded,	-	\$20.00
Transparent Film Cartridge, 5 exposures, $3\frac{1}{2} \times 12$ , (regular No. 4 Bulls-Eye Cartridges),	.	.90
Do., 2 exposures,	.	.45
Paper-Film Cartridge, 5 exposures, $3\frac{1}{2} \times 12$ , (regular No. 4 Bulls-Eye Cartridges),	.	.60
Do., 2 exposures,	.	.30
Black Sole Leather Carrying Case,	.	2.00



# Bicycle Carrying Cases.

---

## Pocket Kodak Cases.

The Pocket Kodak Bicycle Carrying Case is made of the best black sole leather, and will hold, beside the Kodak, three extra spools of film. It attaches to the frame in much the same manner as a tool bag and may be carried suspended from the top bar of the machine, either at the head or at the seat post.

Price of Pocket Kodak Bicycle Case, - - - - \$1.00

## Folding Pocket Kodak Combination Cases.

Carrying Case, with shoulder strap, for No. 1, No. 1 A or No. 2 Folding Pocket Kodak, (always specify in order whether for No. 1, No. 1 A or No. 2),	\$1.25
Clamp for carrying either of above cases on head of bicycle, (fits any tubing from $\frac{7}{8}$ to $1\frac{1}{4}$ ),	.50
Carrying Case, with shoulder strap, for No. 3 Folding Pocket Kodak, - - - -	1.25
Pair Clamps, for carrying above case on head of bicycle (fit any tubing from $\frac{7}{8}$ to $1\frac{1}{4}$ ), - - - -	1.00
No. 2 Folding Bulls-Eye Carrying Case with shoulder strap, Pair Clamps for carrying above case on head of bicycle, (fit any tubing from $\frac{7}{8}$ to $1\frac{1}{4}$ ), - - - -	1.25
	1.00

## Style A Bicycle Cases.

Made of wood, cloth lined, leather covered, fitted with clamps to attach to head of bicycle. Springs on inside take up vibration of wheel and prevent injury to Kodak.

Bicycle Carrying Case, Style A, for No. 2 Bullet, Bulls-Eye, Flexo, Bullet Special and Bulls-Eye Special Kodaks, -	\$2.00
Washers for holding Case in front of Brake Rod, - - -	1.00
Detachable Lamp Bracket, - - - -	.25

In ordering specify instrument to be used with.

## Style B Bicycle Cases.

Made of best black sole leather and fitted with straps which secure it firmly underneath saddle.

Price, Bicycle Carrying Case, Style B for No. 2 Bullet,  
 Bulls-Eye, Flexo, Bullet Special and Bulls-Eye Special  
 Kodaks, - - - - - \$1.50

In ordering specify instrument to be used with.

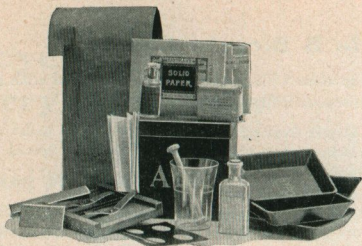
NOTE—This case is impracticable for very short riders as it requires a space of 6 inches in the clear between the mud guard and the saddle spring.

## Cartridge Kodak Bicycle Case.

This case is strongly made of wood, covered with fine grain leather, lined with cloth and fitted with springs on the inside which take up the vibration of the wheel and prevent injury to the camera. By means of two thumb screws which securely grasp the tubing, the case may be attached to the head of the machine or suspended from the top bar.

By means of a set of adjustable washers (extra) the case may be held far enough in front of the bicycle head to allow for the free passage of a brake rod. It may also be provided (extra) with a lamp bracket attachment. No wrench, screw driver or other tools are necessary in making the attachment.

No. 3 Cartridge Kodak Bicycle Case,	-	-	-	-	\$2.25
" 4 " " " " "	-	-	-	-	2.50
" 5 " " " " "	-	-	-	-	3.25
Washers for holding case in front of brake rod, per set,	-	-	-	-	1.00
Detachable Lamp Bracket,	-	-	-	-	.25



## Developing and Printing Outfits.

Eastman's A B C Developing and Printing Outfit includes every requisite for developing, printing and finishing 24 pictures 4 x 5, or 96 Pocket Kodak pictures, also the most economical outfit for  $2\frac{1}{2}$  x  $4\frac{1}{4}$  and  $3\frac{1}{4}$  x  $4\frac{1}{4}$  pictures.

### IT CONTAINS:

1 Eastman Improved Candle Lamp, -	\$.25	$\frac{1}{2}$ oz. Bromide Potassium, \$	.10
1 4 x 5 Printing Frame, -	.25	2 doz. 4 x 5 Solio Paper, -	.25
"    Glass for do., -	.05	2 ozs. Solio Toning Solution, -	.15
1 Glass Beaker, -	.12	1 oz. Glycerine, -	.05
1 Stirring Rod, -	.05	Mask for making Pocket Kodak Medallions, -	....
4 $4\frac{1}{2}$ x 5 $\frac{1}{2}$ Developing Trays, -	.40	Instruction Book, -	.10
$\frac{1}{2}$ doz. Developing Powders, -	.25		
$\frac{1}{2}$ lb. Hyposulphite Soda, .07			\$2.09

Price, complete, neatly packed, - - \$1.50.

Eastman's Bulls-Eye Developing and Printing Outfit, complete for developing and printing 12 pictures  $3\frac{1}{2}$  x  $3\frac{1}{2}$ . Similar to above outfit, but including 1 doz.  $3\frac{1}{2}$  x  $3\frac{1}{2}$  Solio paper, instead of 2 doz. 4 x 5, and containing smaller quantities of chemicals.

Price complete, neatly packed, - - \$1.00.

Eastman's Special 5 x 7 Developing and Printing Outfit complete for developing and printing 24 pictures 5 x 7. Similar to 4 x 5 outfit, but having 5 x 7 trays, paper, etc.

Price complete, neatly packed, - - \$2.00.

NOTE.—These outfits cannot be shipped by mail.

## TERMS.

The prices in this booklet are strictly net, except to regular dealers who carry our goods in stock.

All prices are f. o. b. at Rochester. We make no charge for packing.

For the convenience of our customers we recommend that they make their purchases from a dealer in photographic goods, as by so doing they can save both time and expressage, but where orders are sent direct, remittances must be by New York draft, express order, postal order, or currency (if currency, letter must be registered). Amounts less than one dollar may be remitted in postage stamps. We do not accept personal checks.

EASTMAN KODAK COMPANY,  
Rochester, N. Y.



**Interested? Just ask  
your dealer for "The  
Witchery of Kodakery,"  
our handsomely illus=  
trated, sixty-four page  
catalogue of Kodaks and  
Kodak Supplies. ∅ Free,  
at the dealers, or by mail.**

*"If it isn't an Eastman,  
it isn't a Kodak."*