



**HAWKEYE
CAMERAS**

HAWK-EYE CAMERAS & SUPPLIES



BLAIR CAMERA DIVISION
EASTMAN KODAK COMPANY
ROCHESTER, N.Y.



A Camera Diary



O run, to jump, to swim, to skate, to sit by the flowing brook, to look on orchards blossoming, to dream in the silence that lies amid the hills, to feel the solemn loneliness of deep woods, to learn to know as one knows a mother's face, every change that comes over the face of the heavens from the overpowering mystery of starlit sky to the tender human look with which the moon smiles upon the earth, to follow cattle as they crop the sweet-scented clover, to watch reapers at their work—all this is made doubly impressive and lasting when a Hawk-Eye camera is one's truest companion, recording faithfully each scene of ever-changing mother Nature.

As the memory-pictures grow dim, one will retain in a collection of prints, beloved scenes of childhood days with toys and pets; then youth with companions and games, and later, those mature years that pass all too quickly. The happiness of all the years can be lived over and over again with the pictures that are so easily taken in leisure hours or in vacation time with a Hawk-Eye Camera.

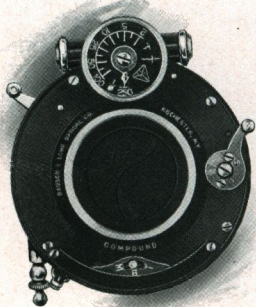


Who has not wondered how his parents spent their childhood—what games they played—what pleasures they had in those early days made mystic with their remembrances told on winter evenings by the fire-side, mayhap when the pop-corn and apples are being passed. How much more vivid their early life could be pictured to us by means of photographs, but at that time they did not have the opportunity we now possess—the pleasure of picture-making with a Hawk-Eye.



Shutter Equipment

B. & L. COMPOUND SHUTTER



AN automatic and setting shutter combined, neither adjustment interfering with the other.

Automatic for bulb and time while speeds from $\frac{1}{250}$ to one second are automatically given when the shutter is set.

The steel segments forming the shutter leaves are star-shaped, giving even illumination over the entire field from the instant the exposure is started.

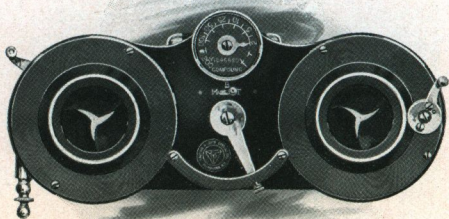
The shutter is made of aluminum, beautifully finished, accurate, compact, speedy and dust-proof, particularly well adapted for use on hand cameras.

B. & L. STEREO COMPOUND SHUTTER

THIS shutter is practically a combination of two regular shutters described above. To arrange for instantaneous speeds it is necessary to set the lever, while time and bulb exposures are made automatically, the various adjustments not interfering with each other on account of a safety locking device.

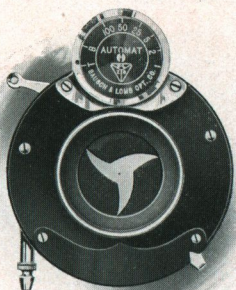
The steel segments of the shutter leaves form a star-shaped opening, giving even illumination during the whole exposure, while the iris diaphragms work in conjunction, giving exactly the same openings.

The mechanism is highly accurate and reliable.



Shutter Equipment

B. & L. AUTOMATIC SHUTTER



ALL the latest and best ideas are embodied in the B. & L. Automatic Shutter. It is of the highest grade, strictly automatic, perfectly balanced and accurately regulated as to the variation of speed, ranging from one second to $\frac{1}{100}$ of a second, also time and bulb. An Iris diaphragm allows the aperture to be

changed at will. We recommend this shutter for use with anastigmat lenses. Furnished as regular equipment on the following Hawk-Eyes:

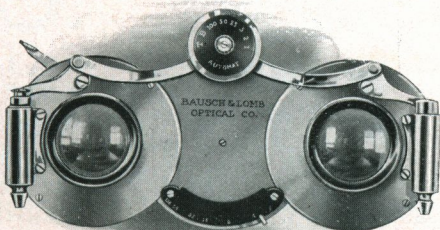
No. 3 Folding Hawk-Eye, Model 6
No. 3-A Folding Hawk-Eye, Model 4

No. 4 Folding Hawk-Eye, Model 3
No. 4 Folding Hawk-Eye, Model 4

B. & L. STEREO AUTOMATIC SHUTTER

THIS shutter is made up by a combination of two automatic shutters, both working in unison, adapted for stereoscopic exposures.

It is of the highest grade, strictly automatic, perfectly balanced and accurately regulated as to the variation of speed, ranging from $\frac{1}{100}$ to one second, also time and bulb. Fitted with Iris diaphragm which allows the aperture to be changed at will. It is handsomely finished, compact, durable and practically dust-proof. Furnished as regular equipment on Stereo Hawk-Eye Model 4.



Shutter Equipment

SHUTTER USED ON NOS. 1-A, 3 AND 3-A FOLDING HAWK-EYE

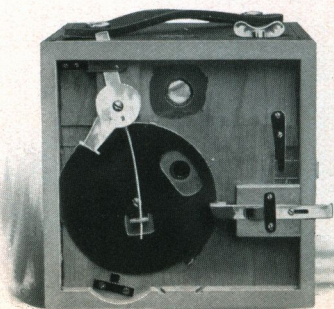
KODAK BALL-BEARING SHUTTER

THIS shutter embodies a new principle in shutter construction, operating with remarkable smoothness and precision. The leaves are made in five segments, mounted entirely on ball bearings, and open and close in the form of a star, admitting a much larger amount of light in the same space of time than any other type of shutter. The smooth, frictionless action of this shutter makes it possible to work it with a bulb of half the ordinary size. It has variable indicated speeds of $\frac{1}{25}$, $\frac{1}{50}$ and $\frac{1}{100}$ seconds, and operates for bulb or time exposures.

Is automatic in action and has iris diaphragm. Is also fitted with indicator for registering each exposure as made.



SHUTTER USED ON NOS. 2, 4, 5 AND 7 WENO HAWK-EYE



THE Hawk-Eye Rotary Shutter is used on the box style of cameras, and in connection with a single set focus Meniscus Lens, makes an ideal combination. Being rotary in design and evenly balanced, it works with the same speed and accuracy in either horizontal or vertical position. The exposures are made by pushing the release lever to the right or left or

vice versa, and it is easily changed from instantaneous to time by drawing out the time catch. The Hawk-Eye Rotary Shutter is thoroughly reliable and is one of the main features which make the Weno Hawk-Eye popular.

No. 2 Weno Hawk-Eye



THIS instrument makes a picture $3\frac{1}{2} \times 3\frac{1}{2}$ inches, which has been a very popular size for the past fourteen years. It is moderate in price, and while it is very simple in construction, yet it has many improvements not included in cameras at twice its cost.

While this camera was primarily designed for the beginner, yet it finds favor with the more advanced photographer who desires a compact box camera giving a sharp, clear picture without focusing.

The No. 2 Weno Hawk-Eye is so arranged that when a hidden button is pressed, the camera may be readily opened, allowing the spool of film to be taken out or placed in the camera. All parts are intact, so there is no danger of losing a ratchet, rod or cover in loading or unloading.

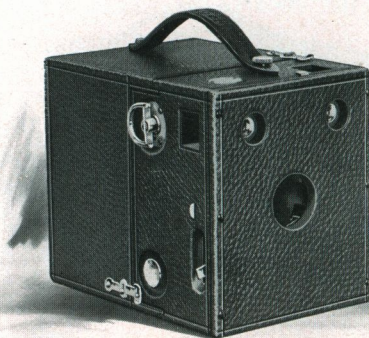
The film adapted for use in this Hawk-Eye is known as No. 2 Bulls-Eye, Blair or Eastman Non-Curling Film.

DETAILS: Made of selected whitewood and cherry, covered with seal grain morocco leather; trimmings of polished brass, nickel plated; pictures $3\frac{1}{2} \times 3\frac{1}{2}$ inches; capacity 12 exposures; size of camera $4\frac{1}{4} \times 4\frac{1}{2} \times 5\frac{1}{2}$ inches; weight 20 ounces; lens fixed focus Achromatic with rotary shutter and set of three stops; tripod socket and brilliant finder.

PRICE LIST

No. 2 Weno Hawk-Eye, not loaded	\$5.00
Blair Non-Curling Cartridge Film, 6 exposures, $3\frac{1}{2} \times 3\frac{1}{2}$30
Blair Non-Curling Cartridge Film, 12 exposures, $3\frac{1}{2} \times 3\frac{1}{2}$60
Weno Hawk-Eye Portrait Attachment50
Black Sole Leather Carrying Case, with shoulder strap	1.25

Nos. 4 and 5 Weno Hawk-Eye



FOR those who desire efficient instruments taking a picture 4 x 5 or 3½ x 4½ inches, we highly recommend these compact box cameras. The lenses are always in focus, all objects from 8 feet to any distance required are covered sharply.

The construction is exceedingly simple; the back section telescoping, which is easily removed by releasing the catches, thus giving access to the film chambers. There are no loose or unnecessary parts to these cameras, everything being well made.

These instruments undergo a rigid factory inspection which assures the user satisfactory pictures. Film for the No. 4 Weno is No. 4 Bulls-Eye; for the No. 5 Weno, No. 3 F. P. K. Blair or Eastman Non-Curling film.

DETAILS: Made of selected whitewood and cherry, covered with seal grain morocco leather; trimmings of polished brass, nickel plated; the No. 4 Weno takes pictures 4 x 5 inches; capacity 12 exposures; size of camera 5 x 5½ x 6½ inches; weight 28 ounces. The No. 5 Weno takes pictures 3¼ x 4¼ inches; capacity 12 exposures; size of camera 4½ x 5½ x 6½ inches; weight 27 ounces; lenses, fixed focus Achromatic Meniscus with rotary shutter and set of three stops; triod sockets and brilliant finders.

PRICE LIST

No. 4 Weno Hawk-Eye, Model 2, not loaded	\$8.00
No. 5 Weno Hawk-Eye, Model 2, not loaded	7.50
Blair Non-Curling Cartridge Film, 6 exposures, 4 x 5,	.45	;		12 exposures,		.90
Blair Non-Curling Cartridge Film, 6 exposures, 3¼ x 4¼	.35	;		12 exposures,		.70
Weno Hawk-Eye Portrait Attachment						.50
Black Sole Leather Carrying Case, with shoulder strap, No. 4 or No. 5 Weno						1.50

No. 7 Weno Hawk-Eye



THIS Hawk-Eye, without question, is one of the finest box form cameras manufactured—simple, compact and inexpensive, yet well made in every particular and splendidly equipped.

Built along similar lines and with the same care as our other box cameras, this instrument possesses an advantage in the size of picture $3\frac{1}{4} \times 5\frac{1}{2}$ (the post card size)—a shape which produces artistic landscapes when used horizontally, or with the addition of a Hawk-Eye portrait attachment, portraits of delicate softness when used in a vertical position.

The lenses in these instruments are very carefully selected and inspected so that they cover the field with extreme sharpness of distances ranging from 8 to 100 feet or more and making the No. 7 Weno Hawk-Eyes noted for their practical excellence. Film for this camera is known as No. 3-A F. P. K., Blair or Eastman Non-Curling film.

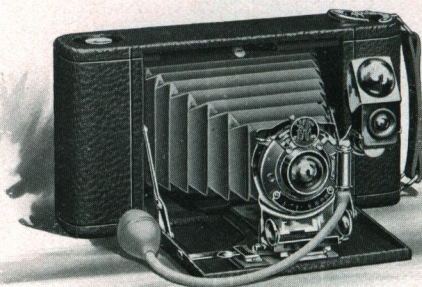
DETAILS: Made of selected whitewood and cherry, covered with seal grain morocco leather; trimmings of polished brass, nickel plated; pictures $3\frac{1}{4} \times 5\frac{1}{2}$ inches; capacity 10 exposures; size of camera $4\frac{3}{4} \times 6\frac{3}{8} \times 6\frac{7}{8}$ inches; weight 30 ounces; lens, fixed focus Achromatic Meniscus with rotary shutter and set of three stops, tripod sockets and brilliant finders.

PRICE LIST

No. 7 Weno Hawk-Eye, not loaded	\$8.00
Blair Non-Curling Cartridge Film, 6 exposures, $3\frac{1}{4} \times 5\frac{1}{2}$40
Blair Non-Curling Cartridge Film, 10 exposures, $3\frac{1}{4} \times 5\frac{1}{2}$70
Weno Hawk-Eye Portrait Attachment50
Black Sole Leather Carrying Case, with shoulder strap	1.50

No. 1-A Folding Hawk-Eye

MODEL 1



THE No. 1-A Folding Hawk-Eye camera possesses individuality and elegance; is devoid of all complications yet perfectly adapted for all-around work. It is the smallest camera fitted with Pneumatic Release shutter; strictly high-grade, handsomely designed and beautifully finished.

The lens furnished with regular equipment is a Rapid Rectilinear of excellent definition, brilliancy and depth, with splendid covering power.

A Single Achromatic Meniscus lens of fixed focus, when fitted to this camera, makes a desirable outfit which does not require any judgment of distances nor use of focusing scale, and produces negatives full of detail and depth.

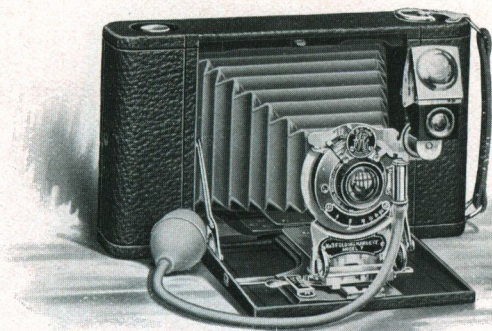
DETAILS: Made of aluminum; covered with seal grain leather; trimmings polished brass, nickel plated; pictures $2\frac{1}{2}$ x $4\frac{1}{4}$ inches; capacity 12 exposures; size of camera $1\frac{3}{4}$ x 4 x $7\frac{3}{4}$ inches; weight 24 ounces; No. 1 Kodak Ball Bearing shutter; Rapid Rectilinear lens; automatic focusing lock; tripod socket; brilliant reversible finder. Uses No. 1-A F. P. K. Blair or Eastman Non-Curling Film.

PRICE LIST

No. 1-A Folding Hawk-Eye, Auto-Focusing Lock, R. R. Lens, No. 1 Kodak Ball Bearing Shutter, not loaded	\$15.00
No. 1-A Folding Hawk-Eye, Single Lens and No. 1 Kodak Ball Bearing Shutter, not loaded	13.50
No. 1-A Folding Hawk-Eye, with No. 1 Zeiss Kodak Anastigmat Lens and No. 0 Compound Shutter, not loaded	43.40
No. 1-A Folding Hawk-Eye, with Series II-b No. 3 Tessar Lens and No. 0 Compound Shutter, not loaded	54.40
Blair Non-Curling Cartridge Film, 6 exposures, $2\frac{1}{2}$ x $4\frac{1}{4}$.25
Blair Non-Curling Cartridge Film, 12 exposures, $2\frac{1}{2}$ x $4\frac{1}{4}$.50
Hawk-Eye Portrait Attachment	.50
Black Sole Leather Carrying Case, with shoulder strap	1.25

No. 3 Folding Hawk-Eye

MODEL 7



THE No. 3 Folding Hawk-Eye, Model 7, is a perfectly appointed camera, extremely compact and convenient, possessing all the modern ideas in camera construction. Simplicity has been considered in its design, making it a particularly desirable instrument for the beginner.

The standard is clamped automatically to the front bed plate; the shutter having star-shaped opening with Iris diaphragm, is automatic and the Rapid Rectilinear lens with 5-inch equivalent focus gives proper perspective and excellent depth and definition.

The No. 3 is also furnished with a single Achromatic Meniscus lens which requires no judgment as to distances—all objects 8 feet or over being in sharp focus.

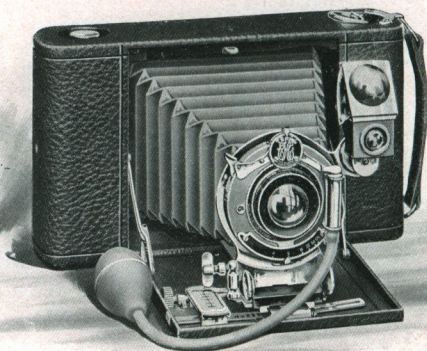
DETAILS: Made of aluminum, covered with seal grain leather; trimmings polished brass, nickel plated; pictures $3\frac{1}{4} \times 4\frac{1}{4}$ inches; capacity 12 exposures; size of camera $1\frac{7}{8} \times 4\frac{5}{8} \times 8$ inches; weight 25 ounces; No. 1 Kodak Ball Bearing shutter; Rapid Rectilinear lens; automatic focusing lock; two tripod sockets; brilliant reversible finder. Uses No. 3 F. P. K. Blair or Eastman Non-Curling film.

PRICE LIST

No. 3, Model 7, Auto. Focusing Lock, R. R. Lens, No. 1 B. B. Shutter, not loaded	\$16.00
No. 3, Model 7, Single Lens, No. 1 B. B. Shutter, not loaded	14.50
Blair Non-Curling Cartridge Film, 6 exposures, $3\frac{1}{4} \times 4\frac{1}{4}$.35
Blair Non-Curling Cartridge Film, 12 exposures, $3\frac{1}{4} \times 4\frac{1}{4}$.70
Hawk-Eye Portrait Attachment	.50
Glass Plate Adapter (only)	3.50
Black Sole Leather Carrying Case, with shoulder strap	1.25

No. 3 Folding Hawk-Eye

MODEL 6



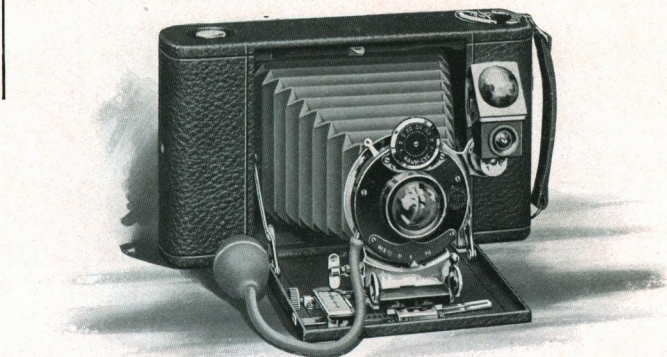
THE No. 3 Folding Hawk-Eye, Model 6, is designed in every way to meet the requirements of the advanced as well as the beginner under all conditions of amateur photography, and is therefore adapted for those who desire an outfit for a wider range of work than can be accomplished successfully with the Model 7.

The superiority of this instrument is in the splendid optical equipment, specially selected, the Rapid Rectilinear lens being larger than ordinarily used in a $3\frac{1}{4} \times 4\frac{1}{4}$ camera, having $5\frac{1}{2}$ inches equivalent focus, and working at a speed of f-8, thus giving clearer and sharper pictures at full opening of the diaphragm and allowing the photographer to make quicker exposures in dull light.

The shutter regularly furnished is the Kodak Ball Bearing, with star-shaped opening, the leaves being in five segments, allowing the passage of much more light in the same space of time than the ordinary type of iris diaphragm two-winged shutter. Another shutter equipment is the well and favorably known B. & L. No. 1 Automatic, having star-shaped opening, working for time, bulb and accurately graduated instantaneous speeds of $\frac{1}{100}$, $\frac{1}{50}$, $\frac{1}{25}$, $\frac{1}{15}$, $\frac{1}{10}$ and 1 second, the slower speeds being used to advantage when the light is not strong enough to secure a satisfactory photograph with a more rapid exposure.

No. 3 Folding Hawk-Eye

MODEL 6



TWO equipments not often found on a camera of this size are the rack and pinion for instant and accurate focusing, either with plates or films; and the rising front which is necessary when photographing tall buildings or when one wishes to decrease the amount of unsightly foreground in a picture.

This camera is light, compact, pleasing in appearance, perfect in construction, excellent in results, is handsomely finished throughout, and the size of picture is one of the most popular. Dry plates can be used by means of an adapter instantly interchangeable with the regular back.

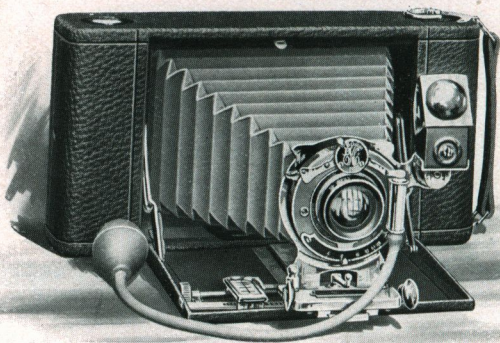
DETAILS: Made of aluminum; covered with seal grain leather; trimmings polished brass, nickel plated; pictures $3\frac{1}{4} \times 4\frac{1}{4}$ inches; capacity 12 exposures; size of camera $1\frac{7}{8} \times 4\frac{5}{8} \times 8$ inches; weight 30 ounces; No. 2 Kodak Ball Bearing or No. 1 B. & L. Automatic shutter; R. R. lens; rack and pinion; rising front; two tripod sockets; brilliant reversible finder. Uses No. 3 F. P. K. Blair or Eastman film.

PRICE LIST

No. 3 Model 6, No. 2 Kodak Ball Bearing Shutter, not loaded	\$18.00
No. 3 Model 6, B. & L. or Kodak Automatic Shutter, not loaded	22.00
No. 3 Model 6, with No. 2 Zeiss-Kodak Anastigmat Lens, Compound Shutter	48.60
No. 3 Model 6, with Ser. 11-b No. 4 Tessar Lens, Auto. Shutter	52.80
No. 3 Model 6, with Ser. 11-b No. 4 Tessar Lens, Compound Shutter	61.10
Blair Non-Curling Cartridge Film, 6 exposures, $3\frac{1}{4} \times 4\frac{1}{4}$.35
Blair Non-Curling Cartridge Film, 12 exposures, $3\frac{1}{4} \times 4\frac{1}{4}$.70
Hawk-Eye Portrait Attachment	.50
Glass Plate Adapter (only)	3.50
Single Glass Plate Holder for $3\frac{1}{4} \times 4\frac{1}{4}$ plates	.50
Black Sole Leather Carrying Case, with shoulder strap	1.25

No. 3-A Folding Hawk-Eye

MODEL 3



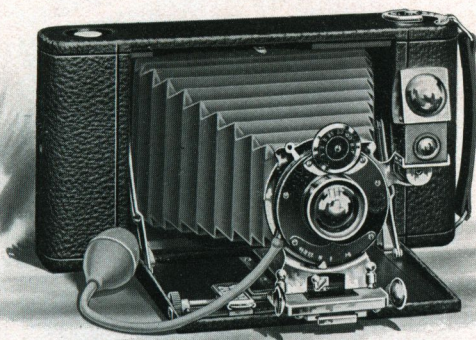
THE No. 3-A Folding Hawk-Eye is the highest attainment of what may be classed pocket camera construction, folding in such compact form that it may readily be carried in a top coat pocket. It has all the features and adjustments found on cameras of three times its bulk, and these coupled with its capacity of ten exposures $3\frac{1}{4} \times 5\frac{1}{2}$, commend it to the most advanced amateur. Like all Folding Hawk-Eyes, the No. 3-A opens horizontally, as most pictures are taken with the camera in this position.

A desirable feature embodied in the equipment of the No. 3-A is the rack and pinion for focusing, also the sliding front which is useful when photographing tall buildings or similar objects. The lenses furnished with the regular equipment are the highest grade of rectilinear type, and each one is carefully tested to insure uniformity. They have a focal length of $6\frac{1}{2}$ inches, which length overcomes all distortion, produces correct perspective, and work at a speed of f-8.

The No. 3-A Folding Hawk-Eye, Model 3, is fitted with the No. 2 Kodak Ball Bearing Shutter, illustrated and described on page 6. The Model 4 is equipped with the No. 1 Bausch & Lomb Automatic Shutter, having star-shaped opening and variable speeds ranging from 1 second to $\frac{1}{100}$ of a second, also time and bulb exposure.

No. 3-A Folding Hawk-Eye

MODEL 4

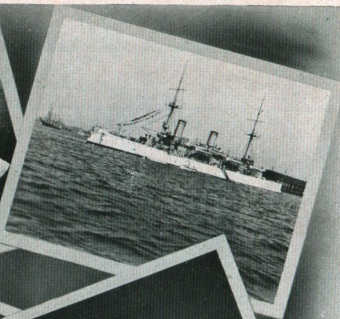
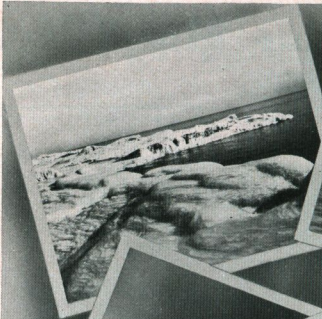


WITH this shutter the camera is capable of a wide range of work, the fractions of seconds being useful when one is working in weaker light; for instance, early in the morning or late in the afternoon. It is constructed so as to admit of adapting Anastigmat lenses, and when so equipped makes the highest possible grade of instrument which can be produced. It is compact, handsome and efficient.

DETAILS: Made of aluminum; covered with seal grain leather; trimmings polished brass, nickel plated; pictures $3\frac{1}{4} \times 5\frac{1}{2}$ inches; capacity 10 exposures; size of camera $2 \times 4\frac{3}{4} \times 9\frac{5}{8}$ inches; weight 33 ounces; Model 3, No. 2 Kodak Ball Bearing shutter; Model 4, No. 1 B. & L. Automatic shutter; Rapid Rectilinear lens; rack and pinion; sliding front; two tripod sockets; brilliant reversible finder. Uses No. 3-A F. P. K. Blair or Eastman Non-Curling film.

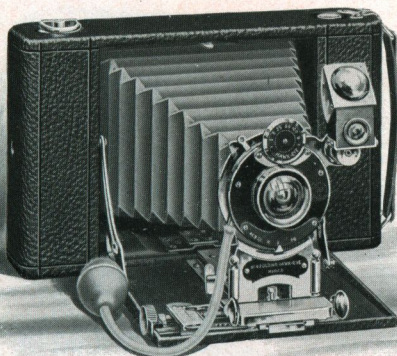
PRICE LIST

No. 3-A Folding Hawk-Eye, Model 3, with R. R. Lens and No. 2 Kodak Ball Bearing Shutter, not loaded	\$20 00
No. 3-A Folding Hawk-Eye, Model 4, with R. R. Lens and B. & L. or Kodak Automatic Shutter, not loaded	25.00
No. 3-A, Model 4, with No. 3 Zeiss Kodak Anastigmat Lens and Auto. Shutter	47.50
No. 3-A, Model 4, with No. 3 Zeiss Kodak Anastigmat Lens and Compound Shutter	58.30
No. 3-A, Model 4, with Ser. II-b No. 5 Tessar Lens and Auto. Shutter	56 50
No. 3-A, Model 4, with Series II-b No. 5 Tessar Lens and Compound Shutter	67.30
Blair Non-Curling Cartridge Film, 6 exposures, $3\frac{1}{4} \times 5\frac{1}{2}$.40
Blair Non-Curling Cartridge Film, 10 exposures, $3\frac{1}{4} \times 5\frac{1}{2}$.70
Hawk-Eye Portrait Attachment	.50
Glass Plate Adapter (only)	3.50
Double Glass Plate Holders for $3\frac{1}{4} \times 5\frac{1}{2}$ plates	1.00
Black Sole Leather Carrying Case, with shoulder strap	1.50



No. 4 Folding Hawk-Eye

MODEL 3



THIS camera is constructed to meet the approval of the most exacting purchaser. The design and details have been worked out on scientific principles and as a result a most compact, complete and efficient instrument has been produced.

The No. 4 Folding Hawk-Eye opens horizontally. Thus ninety per cent. of the pictures are made with camera and shutter in its true position to obtain the best results. The standard is automatically clamped to front bed plate and is adjustable—rising or to either side. The No. 4 Folding Hawk-Eye is light, strong, handsomely finished and uses No. 4 Screen Focus Blair or Eastman Non-Curling film.

DETAILS: Made of aluminum, covered with seal grain leather; trimmings of polished brass, nickel plated; pictures 4 x 5 inches; capacity 12 exposures; size of camera 2 x 5 x 9 1/8 inches; weight 35 ounces; B. & L. Auto Shutter; R. R. lens; rack and pinion for focusing; two tripod sockets and brilliant finder.

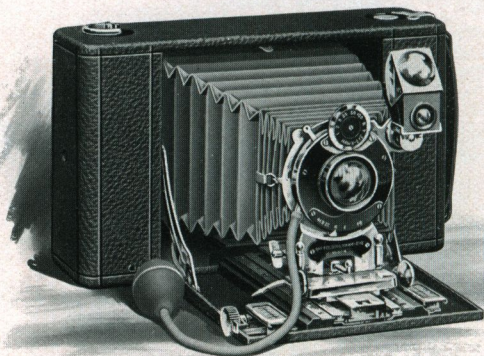
PRICE LIST

No. 4, Model 3, with B. & L. or Kodak Auto. Shutter, R. R. Lens, not loaded	\$25.00
No. 4, Model 3, with No. 2 Kodak Ball Bearing Shutter, R. R. Lens	20.00
No. 4, Model 3, No. 3 Zeiss Kodak Lens, Compound Shutter	58.30
No. 4, Model 3, Series II-b, No. 5 Tessar Lens, Auto. Shutter	56.50
*Blair Non-Curling Cartridge Film, 6 exposures, 4 x 5	.45
*Blair Non-Curling Cartridge Film, 12 exposures, 4 x 5	.90
Hawk-Eye Portrait Attachment	.50
Glass Plate Adapter (only)	3.50
Single Glass Plate Holder	.75
Black Sole Leather Carrying Case, with shoulder strap	1.50

—*In ordering Film specify Screen Focus.

No. 4 Folding Hawk-Eye

MODEL 4



THE No. 4 Folding Hawk-Eye, Model 4, while designed for a wide range of work, still has the simplicity embodied in all Hawk-Eyes. Compactness combined with the completeness of its equipment places it in a class by itself. The regular optical equipment is a Bausch & Lomb Rapid Symmetrical lens, working at a speed of U. S. 4. This, coupled with the improved B. & L. Automatic shutter, illustrated and described on page 5, enables the user to make pictures under conditions which are not favorable to photography, as the lens will cover sharp to the corners with the diaphragm 4.

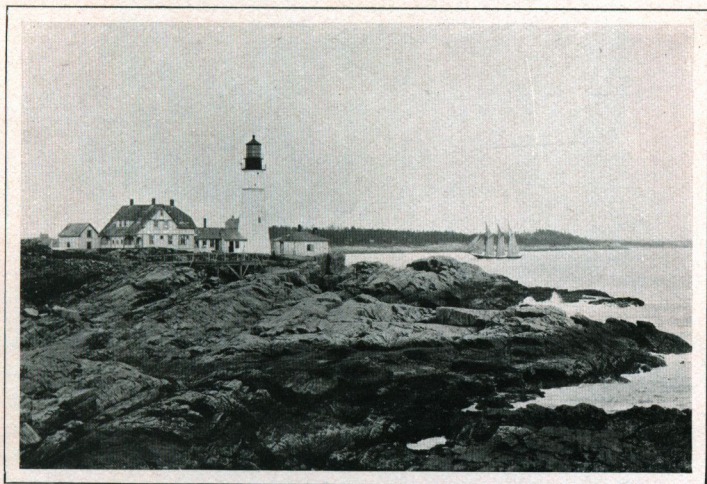
The bellows draw of $13\frac{3}{4}$ inches admits the use of the back combination of the lens alone—a great advantage in making distant views, as often an object is so far away that the effect when made with a doublet is too small.

By using the back combination of the lens, the subject in the picture will be twice the size of the same subject at the same distance, made with a doublet. The following illustrations demonstrate how a distant object may be brought at close range. In designing the No. 4 Folding Hawk-Eye, Model 4, nothing has been neglected. Every attachment of any value has been arranged for. It has an automatic standard clamp, rising, falling and sliding front, and rack and pinion for focusing. Two scales are provided, one

No. 4 Folding Hawk-Eye

MODEL 4

for use with doublet and the other for the back combination of the lens.



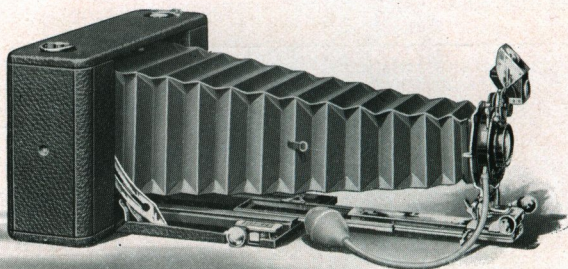
Made with Doublet—Distance 1,000 feet



Made with Back Combination—Distance 1,000 feet

No. 4 Folding Hawk-Eye

MODEL 4



WHEN used with the glass plate adapter the camera, on account of having a long bellows, makes an efficient copying and enlarging outfit, as well as being very useful for photographing small objects close to the camera and in taking large-sized portraits without a portrait attachment.

The No. 4 Folding Hawk-Eye, Model 4, is rigid, compact, efficient, beautifully finished, and will meet with the favor of those who desire the most complete and compact film camera made.

DETAILS: Made of aluminum; covered with seal grain leather; trimmings polished brass, nickel plated; pictures 4 x 5 inches; capacity 12 exposures; size of camera $2\frac{3}{4} \times 5\frac{1}{2} \times 9\frac{1}{8}$ inches; weight 45 ounces; No. 1 B. & L. Automatic shutter; Rapid Symmetrical lens; triple extension bed; $13\frac{1}{4}$ inches bellows draw; rack and pinion; rising front; two tripod sockets; brilliant reversible finder. Uses No. 4 Screen Focus Blair or Eastman Non-Curling film.

PRICE LIST

No. 4 Folding Hawk-Eye, Model 4, R. S. Lens, not loaded	\$30.00
No. 4 Folding Hawk-Eye, Model 4, with Series VII-a No. 7 Zeiss Lens and Automatic Shutter	91.50
No. 4 Folding Hawk-Eye, Model 4, with Series VII-a No. 7 Zeiss Lens and No. 1 Compound Shutter	102.30
*Blair Non-Curling Cartridge Film, 6 exposures, 4 x 5	.45
*Blair Non-Curling Cartridge Film, 12 exposures, 4 x 5	.90
Hawk-Eye Portrait Attachment	.50
Glass Plate Adapter (only)	3.50
Single Glass Plate Holder for 4 x 5 plates	.75
Black Sole Leather Carrying Case, with shoulder strap	1.75

—*In ordering Film specify Screen Focus.

Stereo Hawk-Eye

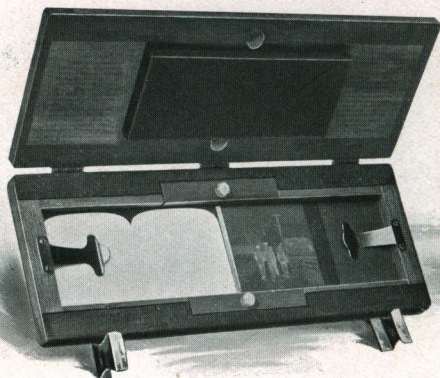
MODEL 3



IN the branch of photography for which this Hawk-Eye is designed, realistic observation is produced by making two negatives of the same subject at the same time, with two lenses of the same focal length, placed in the shutter with a separation of about $3\frac{1}{4}$ inches between centers. While the negatives look alike, yet they are not, because each is made from a different angle and thus more than half a circle is photographed. These two pictures, when viewed through a stereoscope, produce actual visual effects, showing pictures of things as our eyes see them, recreating the scenes or objects with depth, roundness, solidity, distance and perspective; or in other words, giving us the same impression as when viewing the things themselves.

In making Stereo prints it is necessary to transpose either the negatives before printing or the prints before mounting. The reason of this is that the lens throws the image on the film bottom side up, so when the negatives are viewed right side up, the one on the right is the negative made by the left lens in the camera. To correct this, the negatives or prints must be transposed; and to simplify this, the Stereo Hawk-Eye Self-Transposing Printing Frame should be used. This frame, illustrated and described on the following page, is for film negatives only, and is not adapted for glass plates.

Stereo Hawk-Eye Self-Transposing Printing Frame



THE use of the above illustrated frame makes Stereo printing as simple as any other, and the great drawback to making Stereographs is removed. No picture carries the weight as does the Stereograph, because the roundness and perfect perspective is lacking in all others.

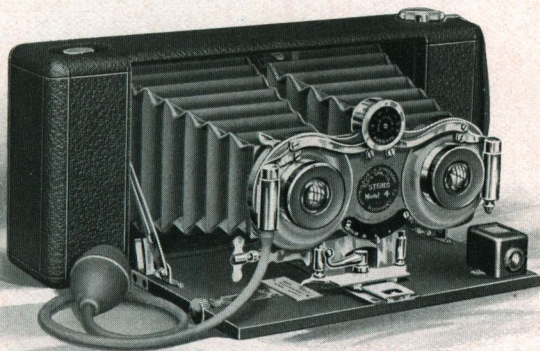
The Stereo Self-Transposing Printing Frame does away with the trimming of the negatives, so the prints made from them seem as one picture when viewed through the stereoscope, and with the use of die-cut paper, all trimming of the print is done away with.

Stereo Hawk-Eyes are made in two models. The Model No. 3 is fitted with B. & L. single valve Stereo shutter, having Iris diaphragm and time, bulb and instantaneous exposure. The Model No. 4 is equipped with B. & L. No. 1 Stereo Automatic shutter, having variable speeds accurately graduated from $\frac{1}{100}$ to one second, described on page 5.

The lenses in both models are of the highest grade of Rapid Rectilinear type, carefully tested and accurately matched, thus producing the same perspective, density and detail in each negative. They have an equivalent focus of 5 inches, great depth and covering power, and work at a speed of f-8. They become universal focus when the diaphragm is set at 16 and the standard clamped at 25 feet.

Stereo Hawk-Eye

MODEL 4



This is almost necessary in making Stereo pictures, as the subject in the foreground as well as the distance should be in sharp focus.

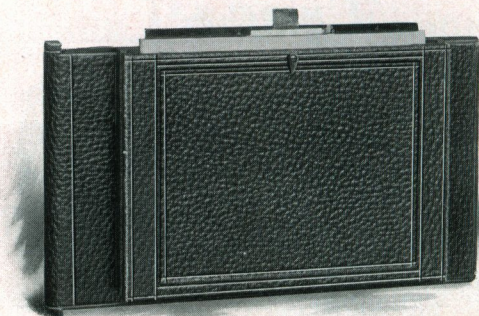
The highly polished nickel plated trimmings in contrast to the rich mahogany bed and the seal-grain leather covering, produce an appearance which is particularly pleasing.

DETAILS: Made of selected cherry and mahogany, all joints dovetailed; covered with seal grain leather; trimmings polished brass, nickel plated; pictures Standard Stereo size; capacity 6 Stereo exposures; size of camera $1\frac{7}{8} \times 4\frac{3}{8} \times 10\frac{1}{4}$ inches; weight 28 ounces; Model 3, single valve Stereo Automatic shutter; Model 4, double valve Stereo Automatic shutter; matched Rapid Rectilinear lenses; rising front; rack and pinion for focusing; tripod socket; brilliant finder. Uses No. 2 Bulls-Eye Blair or Eastman Non-Curling Film.

PRICE LIST

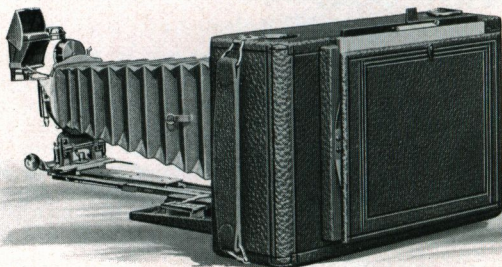
Stereo Hawk-Eye, Model 3, R. R. Lenses, not loaded	\$25.00
Stereo Hawk-Eye, Model 4, R. R. Lenses, not loaded	35.00
Stereo Hawk-Eye, Model 4, fitted with No. 2 Zeiss Kodak Anastigmat Lenses, Stereo Automatic Shutter	73.55
Stereo Hawk-Eye, Model 4, fitted with No. 2 Zeiss Kodak Anastigmat Lenses, No. 0 Stereo Compound Shutter	82.05
Stereo Hawk-Eye, Model 4, fitted with Series II-b No. 4 Tessar Lenses and Stereo Automatic Shutter	98.55
Stereo Hawk-Eye, Model 4, fitted with Series II-b No. 4 Tessar Lenses and No. 0 Stereo Compound Shutter	107.05
Blair Non-Curling Cartridge Film, 3 exposures, for Stereo, $3\frac{1}{2} \times 3\frac{1}{2}$.30
Blair Non-Curling Cartridge Film, 6 exposures, for Stereo, $3\frac{1}{2} \times 3\frac{1}{2}$.60
Stereo Hawk-Eye Self-Transposing Printing Frame	1.50
Glass Plate Adapter (only)	3.50
Single Glass Plate Holder for Stereo plates, $3\frac{1}{4} \times 6\frac{1}{2}$	1.00
Black Sole Leather Carrying Case, with shoulder strap	1.50

Plate Adapter



BY the use of the Plate Adapter, which fits interchangeably with the back cover, Folding Hawk-Eyes may be converted into efficient plate cameras.

These Adapters are fitted with spring actuating ground glass, and are made to fit No. 3, Models 5, 6 and 7; No. 3-A, Models 1, 2, 3 and 4; No. 4, Models 3 and 4; and Stereo, Models 3 and 4.



Folding Hawk-Eye Showing Bed Extended;
Fitted with Plate Adapter

PRICE LIST

Plate Adapter only, for No. 3 Folding Hawk-Eye, Models 5, 6 and 7, . . .	\$3.50
Plate Adapter only, for No. 3-A Folding Hawk-Eye, Models 1, 2, 3 and 4, . . .	3.50
Plate Adapter only, for No. 4 Folding Hawk-Eye, Models 3 and 4, . . .	3.50
Plate Adapter only, for Stereo Hawk-Eye, Models 3 and 4, . . .	3.50
Single Plate Holder, $3\frac{3}{4} \times 4\frac{1}{4}$,50
Single Plate Holder, 4×5 ,75
Double Plate Holder, $3\frac{3}{4} \times 5\frac{1}{2}$, . . .	1.00
Single Stereo Plate Holder, $3\frac{3}{4} \times 6\frac{1}{2}$, . . .	1.00

When ordering Plate Adapter specify model of camera.

Hawk-Eyes Fitted With Lenses of the Highest Grade

(The prices given in this table are net.)

FOLDING HAWK-EYES FITTED WITH No. 0 COMPOUND SHUTTER

No. 1-A Model 1 with No. 1 Zeiss Kodak Anastigmat lens	\$43.40
No. 1-A Model 1 with No. 3 Tessar lens, Series II-b	54.40
No. 3 Model 6 with No. 2 Zeiss Kodak Anastigmat lens	48.60
No. 3 Model 6 with No. 4 Tessar lens, Series II-b	61.10

FOLDING HAWK-EYES FITTED WITH No. 1 COMPOUND SHUTTER

No. 3-A Model 4 with No. 3 Zeiss Kodak Anastigmat lens	\$58.30
No. 3-A Model 4 with No. 5 Tessar lens, series II-b	67.30
No. 4 Model 3 with No. 3 Zeiss Kodak Anastigmat lens	58.30
No. 4 Model 3 with No. 5 Tessar lens, Series II-b	67.30
No. 4 Model 4 with No. 7 Zeiss Protar lens, Series VII-a	102.30

FOLDING HAWK-EYES FITTED WITH No. 1 AUTOMATIC SHUTTER

No. 3 Model 6 with No. 2 Zeiss Kodak Anastigmat lens	\$40.30
No. 3 Model 6 with No. 4 Tessar lens, Series II-b	52.80
No. 3-A Model 4 with No. 3 Zeiss Kodak Anastigmat lens	47.50
No. 3-A Model 4 with No. 5 Tessar lens, Series II-b	56.50
No. 4 Model 3 with No. 3 Zeiss Kodak Anastigmat lens	47.50
No. 4 Model 3 with No. 5 Tessar lens, Series II-b	56.50
No. 4 Model 4 with No. 7 Zeiss Protar lens, Series VII-a	91.50

FOLDING HAWK-EYES FITTED WITH No. 0 STEREO COMPOUND SHUTTER

Stereo Model 4 with No. 2 Zeiss Kodak Anastigmat lenses	\$82.05
Stereo Model 4 with No. 4 Tessar lenses, Series II-b	107.05

FOLDING HAWK-EYES FITTED WITH STEREO AUTOMATIC SHUTTER

Stereo Model 4 with No. 2 Zeiss Kodak Anastigmat lenses	\$73.55
Stereo Model 4 with No. 4 Tessar lenses, Series II-b	98.55

Hawk-Eye Accessories

Hawk-Eye Tripods

IN SPRUCE, MAPLE AND EBONY

THESE tripods are finely finished, compact and perfectly rigid, combining the advantages of both the folding and telescopic style of tripod. The top is so made that the legs, when adjusted, are practically locked, avoiding any possibility of their becoming detached by accident after the tripod is placed and ready for use.

The Spruce tripod is very light and compact, yet rigid when in use; is fitted with metal head made in one piece which avoids all possibility of being easily broken. The trimmings are of lacquered brass.

The Maple tripod is beautifully finished in natural color. In construction, it is similar to the Spruce tripod, except that the wood parts are of maple, with trimmings of lacquered brass. It is furnished with metal or wood head as desired.

The Ebony tripod is made of maple, finished dead-black to represent ebony. The trimmings being nickel produce a contrast which is very handsome. This tripod is absolutely rigid, quickly

set up and readily adjusted for height. The beautiful finish makes it very desirable for use with high-grade outfits.

When extended, these tripods measure 56 inches; when folded, 21 inches.

Weight of the Spruce tripod is 20 ounces, of the Maple or Ebony 30 ounces. They are adapted for any camera up to and including 5 x 7 in size.

Price of Spruce \$1.60, Maple \$1.70, Ebony \$2.00

Weno Tripod

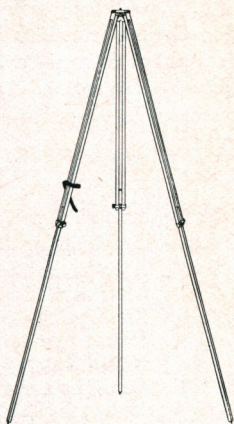
THIS tripod is designed for use with small cameras. The top is attached to the legs in such a manner that it is not necessary to remove when folding, which is an advantage, as the tripod is always ready for use.

The wood used is straight grain spruce, with shellac finish, the trimmings of lacquered brass.

The weight complete, with head and screw, is but 17 ounces.

The length when extended can be made to vary from 34 to 54 inches. The length when folded is but 29½ inches.

Price \$.90



The Kodak Metal Tripods



THESE tripods are made of carefully tempered brass tubing nickel-plated, except the upper section which is black enameled. Lightness is therefore combined with strength and rigidity, producing a very safe support.

The various sections of each leg of these tripods work on the telescopic plan; and as each one is drawn out, sets automatically until the entire tripod is extended. To close, it is only necessary to press the top button of each leg, when the various sections will all telescope, and the tripod cannot possibly close until this button is pressed.

Probably the most convenient feature is the nickeled revolving-head and screw that allows the camera to be set up solidly and turned to the right or left without moving the legs of the tripod. A neat leather strap holds the three legs tightly together when tripod is closed.

STYLE	SECTIONS	LENGTH CLOSED	EXTENDED	WEIGHT	PRICE
1	4	15 in.	48 ½ in.	24 ozs.	\$2.50
2	5	13 ½ "	49 ½ "	25 "	3.25

Film

NOTE—When ordering film, state whether you desire the Blair Non-Curling (numbers on back), or Perforated; if the latter, specify Sunlight or Special Sunlight; always state the style of Hawk-Eye for which it is intended. If in doubt as to style, give exact description of camera with measurements.

PERFORATED DAYLIGHT LOADING FILM

		6 Ex.	12 Ex.
2	x 2½ Sunlight for Baby Hawk-Eye	\$.30	\$.40
3½	x 3½ Sunlight for the Hawk-Eye Jr.30	.60
3½	x 3½ Special Sunlight for Weno or Tourist Hawk-Eye (small flange spool)30	.60
3¼	x 4¼ Sunlight for No. 3 Folding, No. 3 Focusing Hawk-Eye or No. 3 Combination Hawk-Eye (small flange spool)35	.70
4	x 5 Sunlight for 4 x 5 Hawk-Eye Jr. or '96 Model Mahogany Roll Holder45	.90
4	x 5 Special Sunlight for No. 4 Weno, No. 4 Folding, No. 4 Focusing or Tourist Hawk-Eye45	.90

All Perforated Film is especially prepared for use in the Kodak Film Tank.

BLAIR NON-CURLING CARTRIDGE FILM

		6 Ex.	12 Ex.
2¼	x 2¼ for No. 1 Brownie	\$.15	\$.20
2¼	x 3¼ for No. 2 Brownie, No. 2 Fldg. Pocket Brownie20	
2½	x 4¼ for No. 1-A Folding Hawk-Eye, Pocket Kodak, Pocket Kodak Special, No. 2-A Brownie, No. 2-A Folding Brownie25	.50
*3½	x 3½ for Hawk-Eye, Bulls-Eye, Bullet or Buck-Eye30	.60
3¼	x 4¼ for No. 3 Brownie, No. 3 Folding Brownie, No. 3 Bulls-Eye Kodak35	.70
*3¼	x 4¼ for No. 3 Weno Hawk-Eye, Stereo Hawk-Eye, Models Nos. 1 and 2, No. 3 Combination Hawk-Eye, or No. 3 Focusing Hawk-Eye, No. 3 Folding Hawk-Eye, Kodak or Buck-Eye35	.70
4	x 5 for No. 4 Folding Hawk-Eye, Models 3 and 4, No. 4 Screen Focus Kodak45	.90
4¼	x 3¼ for No. 3 Cartridge Kodak35	.70
5	x 4 for No. 4 Cartridge Kodak45	.90
7	x 5 for No. 5 Cartridge Kodak80	
3¼	x 5½ for No. 7 Weno, No. 3-A Folding Hawk-Eye and Pocket Kodak40	10 Ex. .70
3¼	x 5½ for No. 3-B Folding Hawk-Eye, No. 6 Weno Hawk-Eye, Stereo Brownie, No. 3-B Quick-Focus Kodak40	.70
4	x 5 for Hawk-Eye, Bulls-Eye, Bullet or Buck-Eye45	.75

—*3¼ x 4¼ and 3½ x 3½—6 exposure lengths supplied on regular size spools. Small flange spool supplied when specified.

Carrying Cases

Made of Black Sole Leather, including shoulder strap, and first-class in every way.

No. 2 Weno Hawk-Eye	\$1.25
No. 4 Weno Hawk-Eye	1.50
No. 4 Weno Hawk-Eye, Model No. 2	1.50
No. 5 Weno Hawk-Eye	1.50
No. 7 Weno Hawk-Eye	1.50
No. 1-A Folding Hawk-Eye, Model No. 1	1.25
No. 3 Folding Hawk-Eye, Models Nos. 3, 4, 5, 6 and 7	1.25
No. 3-A Folding Hawk-Eye, Models Nos. 1, 2, 3 and 4	1.50
No. 4 Folding Hawk-Eye, Model No. 3	1.50
No. 4 Folding Hawk-Eye, Model No. 4	1.75
Stereo Hawk-Eye, Models Nos. 1, 2, 3 and 4	1.50

(Prices given on application for old style and special cases.)

Plate Holders

In ordering plate holders, to avoid the possibility of delay or error, it is always best to mention the camera in which they are to be used, or give outside measurements with slides withdrawn.

All holders are made of selected cherry, and the slides can be furnished either of waterproof cardboard or hard rubber.

Used in Cameras Listed in Catalogue.			Used in Obsolete Cameras.		
SIZE	STYLE	With Rubber Slides	SIZE	With Board Slides	With Rubber Slides
3¼ x 4¼	Single	\$.50	3¼ x 3¼	\$.80	\$1.00
3¼ x 5½	Double	1.00	4 x 5	1.00	1.20
3¼ x 6½	Stereo	1.00	5 x 7	1.50	1.80
4 x 5	Single	.75	6½ x 8½	2.00	2.50
			8 x 10	2.35	2.95

SLIDES FOR HOLDERS.

SIZE	BOARD	Polished Hard Rubber	SIZE	BOARD	Polished Hard Rubber
3¼ x 3¼	\$.10	\$.20	4 x 5	\$.15	\$.25
3¼ x 4¼	.10	.20	5 x 7	.20	.35
3¼ x 5½	.15	.25	6½ x 8½	.25	.50
3¼ x 6½	.15	.25	8 x 10	.35	.65

Card Mounts

We do not carry a complete assortment of card stock, selecting only what we think most desirable for the amateur's use in Carbon Black or Scotch Gray only.

	PER 50	PER 100		PER 50	PER 100
2½ x 4¼	\$.40	\$.80	3¼ x 5½	\$.45	\$.90
3½ x 3½	.40	.80	4 x 5	.45	.90
3¼ x 4¼	.45	.85	Stereo	.50	1.00

Velox Developing-Out Paper

An ideal amateur paper. Prints and develops quickly by artificial light.

$3\frac{1}{2} \times 3\frac{1}{2}$	Dozen	Gross
$3\frac{1}{4} \times 5\frac{1}{2}$	\$.15	\$1.50
4×525	1.50
											2.00

Azo Developing-Out Paper

Die cut for Stereo prints	2 Dozen	Gross
										\$.25	\$1.10

Solio Printing-Out Paper

Brilliant high lights, silky half-tones, rich, transparent shadows.

$3\frac{1}{2} \times 3\frac{1}{2}$	2 Dozen	Gross
$3\frac{1}{4} \times 4\frac{1}{4}$	\$.20	\$1.15
$3\frac{1}{4} \times 5\frac{1}{2}$20	1.15
4×525	1.25
										.25	1.25

Eastman and Standard Dry Plates

Extra rapid for instantaneous work.

$3\frac{1}{4} \times 3\frac{1}{4}$	Dozen	
$3\frac{1}{2} \times 3\frac{1}{2}$	\$.40
$3\frac{1}{4} \times 4\frac{1}{4}$40
$3\frac{1}{4} \times 5\frac{1}{2}$45
$3\frac{1}{4} \times 6\frac{1}{2}$65
$3\frac{1}{4} \times 6\frac{1}{2}$ (Stereo)75
4×565

Hawk-Eye Developing Trays

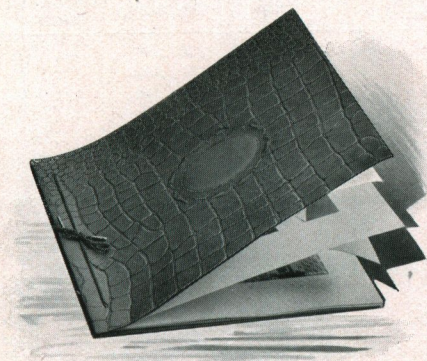
These trays are light in weight, tough and strong, and are not affected by the action of chemicals; are easily kept clean, and we recommend them for amateurs' use.

$3\frac{1}{4} \times 4\frac{1}{4}$	\$.12
4×515
5×725

Printing Frames

4×5	\$.25
5×735
Stereo		1.50

Hawk-Eye Album



THE new Hawk-Eye Album is on the loose leaf system with covers of fine alligator leather finish material. Tied with silk lacing. Panel in cover for lettering. Leaves of heavy stock, antique finish. Ribbed tissue paper bound between each leaf.

Made for both black and white, and sepia toned prints and for all sizes up to and including 5 x 7.

Extra leaves and tissues may be inserted when desired.

No. 1, Black leaves; No. 2, White leaves; No. 3, Sepia leaves, 5½ x 7, . . .	\$.20
Extra leaves, either color, complete with tissue, package of 5,07
No. 4, Black leaves; No. 5, White leaves; No. 6, Sepia leaves, 7 x 10,30
Extra leaves, either color, complete with tissues, package of 5,10

Outfits for Developing and Printing

To save time and trouble in selecting the articles needed for developing and printing, we furnish outfits including everything necessary at far below the cost if furnished separately.

3½ x 3½ FOR FILM OR PLATES

1 Candle Lamp,	\$.25
4 Developing Trays,40
1 4-oz. Graduate,10
1 3½ x 3½ Printing Frame,25
1 3½ x 3½ Glass,05
1 Stirring Rod,05
¼ doz. Developing Powders,15
¼ lb. Kodak Acid Fixing Powder,10
1 dozen Sheets Velox Paper,15
1 Bottle Nepera Developer,10
1 Package Bromide of Potassium,10
Directions,10
	\$1.80

Price, complete, \$1.25

4 x 5 FOR FILM OR PLATES

1 Candle Lamp,	\$.25
1 4 x 5 Printing Frame,25
1 4 x 5 Glass,05
1 4-oz. Graduate,10
1 Stirring Rod,05
4 Developing Trays, 4½ x 5½,40
5 Tubes Developer,25
½ lb. Kodak Acid Fixing Powder,15
½ oz. Bromide Potassium,10
2 dozen 4 x 5 Velox Paper,50
2 ozs. Nepera Developer,15
Directions,10
	\$2.35

Price, complete, \$1.50

Developing and Printing

SIZE	Developing, Printing and Mounting— 12 exposures	Developing Only	Printing and Mounting	Developing, Printing and Mounting
2 1/2 x 4 1/4	\$1.50	\$.06	\$.08	\$.12 1/2
3 1/2 x 3 1/2	1.50	.06	.08	.12 1/2
3 1/4 x 4 1/4	1.50	.06	.08	.12 1/2
3 1/4 x 5 1/2	1.50-(10 ex.)	.08	.10	.15
4 x 5	1.80	.08	.10	.15
5 x 7	1.20-(6 ex.)	.10	.12 1/2	.20
Stereo	2.40	.10	.15	.20

Chemicals

Solio Toning Solution, 8 oz. bottle,	\$.50
Solio Hardener, 8 oz. bottle,35
Hub Developing Powders for films, per dozen packages,50
M. Q. N. A. developing tubes, box 5 tubes,75
Acid-Hypo, for Films or Velox, per pound,25

Terms

THE prices are net except to dealers. Remittances should be made by draft on New York, express order, postal order, or registered mail. Amounts less than one dollar may be remitted in stamps. We do not accept personal checks.

Parties unknown to us desiring shipment C. O. D. must remit one-third the estimated amount of invoice with the order.

Small parcels which do not contain glass in any form can be sent by mail at risk of the purchaser. We do not pay postage—remit when ordering.

All our goods are packed carefully, and we cannot be held responsible for any damage after the package leaves our hands.

No charge is made for packing, and prices are f. o. b. Rochester.

BLAIR CAMERA DIVISION,
EASTMAN KODAK COMPANY,
Rochester, New York, U. S. A.

