

1909



PREMO

PREMO CAMERAS

AND ACCESSORIES

1909

MANUFACTURED BY
ROCHESTER OPTICAL DIVISION,
EASTMAN KODAK COMPANY,
ROCHESTER, N. Y.



These illustrations are reproductions from pictures made with Premograph No. 2. The exposure can always be made at the most favorable moment. See page 8.

“OH, FOR A CAMERA”

HOW many times have we heard the phrase, perhaps unconsciously, expressed.

It's bound up with the happiest moments of life—with the healthy enjoyment of the great outdoors—with the jolly companionships and merry escapades of vacation and camping-out times. The automobile tour, the fishing and hunting trip, yield many an odd type of locality—many a magnificent bit of scenery, which will bring the words to the lip—“Oh, for a Camera.” And more than all, in the everyday life of home. The laughing baby, clinching his chubby fists—the unconscious grace of romping childhood—the family gatherings of Sunday afternoons—a thousand old familiar home surroundings make their appeal to us at one time or another, for a camera—a camera to preserve, through the changing years, the happy times of life.

These are the kinds of pictures that make the camera worth while to all of us, and these are the kind of pictures for which we want you to remember **PREMO**—for Premos afford the simplest and surest means of picture making.

You do not have to be an expert, you need not become one of the great body of amateur enthusiasts, you do not need an expensive and elaborate outfit. But you would like pictures of this kind, and a Premo camera will get you splendid pictures of all the things you are interested in. It will get them in an easy, simple manner with practically no effort on your part.

Premo photography is photography at its simplest.

THE PREMO FILM PACK

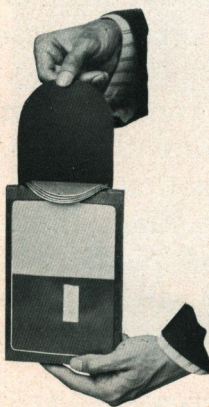
STANDING back of all Premo cameras, doubling the value of many, making possible the smallest cameras in the world, converting comparatively heavy plate cameras into convenient daylight loading film instruments, making amateur photography surer and easier : that's what the Premo Film Pack means.



The Pack.

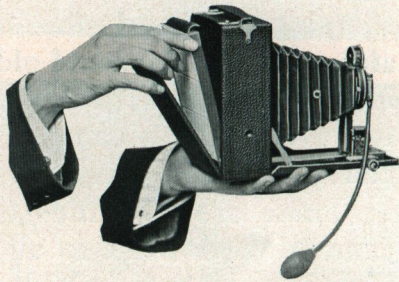
Eastman N. C. stock—the film with twenty years of experience behind it.

The Premo Film Pack is loaded in an exclusively film Premo camera, or an adapter for Premo plate camera, by merely opening the back, dropping pack in place, and then closing the back—the



Drawing out "Safety Cover."

easiest means of loading any sensitive photographic medium. It is light-tight and hence can be loaded and unloaded in broad daylight.



Loading is so easy.

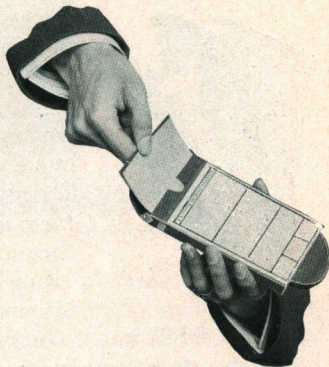
After loading, the first film is presented for exposure by drawing out from the top a black paper tab, which pulls the light-protecting "safety cover" from its position in front of the first film, around to the back of the pack. The twelve films are each attached individually to black papers corresponding to the "safety cover," the continuations of which are tabs at the top, numbered consecutively from 1 to 12.

So after the first exposure has been made, tab No. 1 is drawn out just as the "safety

THE PREMO FILM PACK

cover" was, and this pulls the exposed film No. 1 around to the back, uncovering film No. 2, which is now ready for exposure. So on for each successive exposure until the pack has been exhausted. The tabs themselves when pulled out being of no further use are torn off and thrown away.

One unique advantage of the Premo Film Pack is the fact that one or more films may be removed at any time for development, without waiting until the entire pack of twelve is exposed. *This feature makes it unnecessary for us to furnish a six exposure film pack.* Why? Because the purpose of six or less exposure film is to allow one to develop a small number of films without the necessity of exposing twelve. But with the film pack even one film can be removed and developed as soon as exposed, and the operation can be repeated as often as desired.



One or more films can easily be removed at any time for development.

Film Pack films may be developed by the tray or tank system as explained on page 34. And as the films are individual, any number of films from one to the full number can be developed in the tank.

Premo Film Packs, as well as Premo Cameras, may be obtained of practically every photographic dealer in this country. They may be had also in any part of the world in most photographic establishments, and always at the following agencies:

LONDON—Kodak, Limited, 57-61 Clerkenwell Road, E. C. ; 60 Cheapside, E. C. ; 115 Oxford

Street, W. ; 171-173 Regent Street, W. ; 59 Brompton Road, S. W. ; 40 Strand, W. C.

LIVERPOOL—Kodak, Limited, 96 Bold Street.

GLASGOW—Kodak, Limited, 72-74 Buchanan Street.

PARIS—Kodak, Société Anonyme Française, Avenue de l'Opéra, 5 ; Place Vendôme, 4.

LYONS—Kodak, Société Anonyme Française, 26-28 Rue de la République ; 11 Rue du Palais-Grillet.

NICE—Kodak, Société Anonyme Française, 34 Avenue de la Gare.

BERLIN—Kodak Gesellschaft, m. b. H., Markgrafen Strasse, 92-93 ; Kodak Galerie, Leipzigerstrasse, 114 ; Unter den Linden, 26.

BRUSSELS—Kodak, Limited, 36 Rue de Fosse aux Loups ; 59 Montagne c'e la Cour.

VIENNA—Kodak Gesellschaft, m. b. H. , 29 Graben.

ST. PETERSBURG—Kodak, Limited, Bolschaja Konjuschennaja 19.

MOSCOW—Kodak, Limited 15, 16 Petrovka.

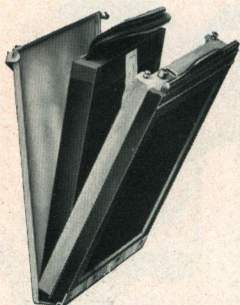
MILAN—Societa Kodak, 10 Via Vittore Pisani ; 34 Corso Vittorio Emanuele.

MELBOURNE, Baker & Rouse, Prop., Ltd., 284 Collins Street.

SYDNEY, Baker & Rouse, Prop., Ltd., 375 George Street.

FILM PACK ADAPTERS

THE use of the Film Pack in the Premo Plate cameras converts these fine instruments into light, compact, convenient daylight loading film cameras, and at the same time, retains that immense advantage which is always associated with plate cameras—ground glass focusing.

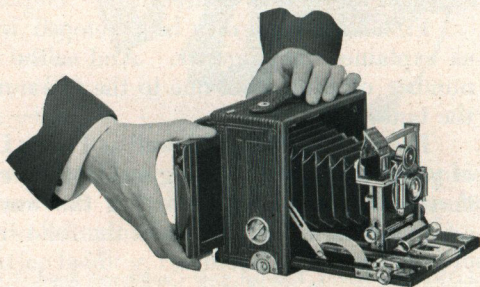


The Adapter.

For the use of contractors in determining the progress of work, for pictures which are to be reproduced for illustration by the half tone process, for the use of the particular amateur, for all work where perfect sharpness and correct composition is essential, the ground glass is considered indispensable. And the Premo Plate cameras used with the Premo Film Pack offer all these advantages, combined with the light weight, portability

and unbreakable qualities of films.

The Film Pack may be loaded in any Premo Plate camera up to and including the 5 x 7 size, by means of the Premo Film Pack Adapter, a device very similar in size and shape to an ordinary plate holder. In fact, the face is identically the same, but there is no middle septum and the back is hinged so that the pack may be dropped in place, the back closed and the adapter inserted in the camera just as the ordinary holder. The entire operation of loading and unloading is effected in broad daylight.



The Adapter is loaded in a Premo plate camera as easily as a plate holder.

Exposures are then made with the film pack as usual, but at any time the adapter slide may be inserted and the adapter removed in daylight. In this manner each image, before the exposure, may be sharply focused on the ground glass just as though plates were being used, and, of course, if desired, the adapter can be taken to the dark room at any time and as many exposures as have been made, removed for development.

PREMO JRS. No. 1, 1A, 3 & 4



THE original Premo Junior—the No. 1, introduced last year, was such a simple little camera and made such splendid pictures even in the hands of children, that many grown-up people have wished for a camera of the same type, but one with which larger pictures might be obtained. So we have added three new Premo Juniors, giving one the choice of four of the most popular of amateur sizes in these simple, inexpensive cameras.

Premo Juniors require no focusing, no estimating of distances, no previous knowledge of photography whatever. Just load the camera, point it at any object, press a lever and the exposure is made. And loading is very easy. Open back, drop in Premo Film Pack, close back, and it's all done in daylight. To change films for successive exposures merely pull out successive tabs.

Inexpensive, very compact, but strongly made to withstand the hardest knocks which the children are likely to give them, these cameras can be easily used by any boy or girl. And they will be found in the hands of thousands of adults, because they are not toys, but cameras; they make satisfactory pictures.

PRICES.

	No. 1 2¼ x 3¼	No. 1A 2½ x 4¼	No. 3 3¼ x 4¼	No. 4 4 x 5
Premo Junior	\$2.00	\$3.00	\$4.00	\$5.00
Carrying Case75	.85	1.10	1.25
Premo Film Pack (12 exposures)	.40	.50	.70	.90

CAPACITY—12 exposures without reloading. SIZE OF CAMERA—No. 1, 3¼ x 4¼ x 5¼ in.; No. 1A, 3½ x 5½ x 5½ in.; No. 3, 4 x 5½ x 5¼ in.; No. 4, 4¼ x 6¼ x 6½. WEIGHT—No. 1, 12 ounces; No. 1A, 14 ounces; No. 3, 20 ounces; No. 4, 25 ounces. SHUTTERS—Automatic with diaphragm stops. LENS—Meniscus Achromatic. Two tripod sockets and two finders.

PREMOGRAPH No. 2

THE Premograph place at the service of the average amateur photographer—of the merest beginner—the advantages of reflecting photography. The bugbear of price need no longer deter any photographer from availing himself of those conveniences offered in reflecting construction.

There have been other reflecting cameras; but they have been so very high priced as to be over the heads of all but the specialists in high speed work, and those to whom price is no object. But the Premograph is so inexpensive as to be within the easy reach of all—so light and compact, that it can be carried anywhere without inconvenience. As simple to operate as the simplest of ordinary hand cameras—and withal, offering all the advantages of any reflecting type, except very high speed photography. These advantages can be stated in a few words.



Premograph permits the operator to see, in advance, just what he is going to get in the finished picture. It shows him a reflection of each object to be photographed, right side up, in size and position, just as it will be in the finished result. It does away with guess-work—with dependence on a small view finder, with the possibility of getting too much or too little in the picture.

This facility of always seeing just how the picture is going to look, makes Premograph especially valuable for baby pictures and general amateur portraiture—every motion of the little ones—every expression of the face—can be watched on the ground glass, and exposure made at the most favorable moment.

Likewise, for street scenes, the hunting and fishing trips—ordinary instantaneous work, Premograph will do all that an ordinary camera of similar price will, and in addition, reduces the possibilities of mistake by showing, before the exposure is made, the picture in its full size and right side up.

PREMOGRAPH No. 2

Premograph construction is easily understood. There is no complex mechanism to get out of order—a child can operate one after reading the simple instructions which accompany each camera.

To operate for instantaneous exposures, one has but to touch a small lever, which automatically throws up the hood, set the mirror by turning a key in the side of the box (when the image may be seen on the ground glass, right side up and full size) focus sharply with rack and pinion attachment and make the exposure at the proper moment, by simply reversing the key. This throws up the mirror from the path of the lens and at the same time operates the shutter.

Time exposures are made in the same simple manner, a device being supplied which holds the shutter open until the proper time elapses, when a pressure of a button closes it. A retarded speed device is also furnished, which will make exposures of the following speeds: $\frac{1}{25}$, $\frac{1}{15}$ and $\frac{1}{10}$ seconds.

The focusing nut is always flush with the bed when not in use. When required, upon pressure of a small button it springs out automatically. The front is hinged and may be opened, affording access to the lens for regulating diaphragm, cleaning, etc.

A specially constructed lens cover is supplied, which opens automatically the moment the lens is racked out, closing again when the front is racked back. This is an assurance that the lens is always protected when the camera is closed.

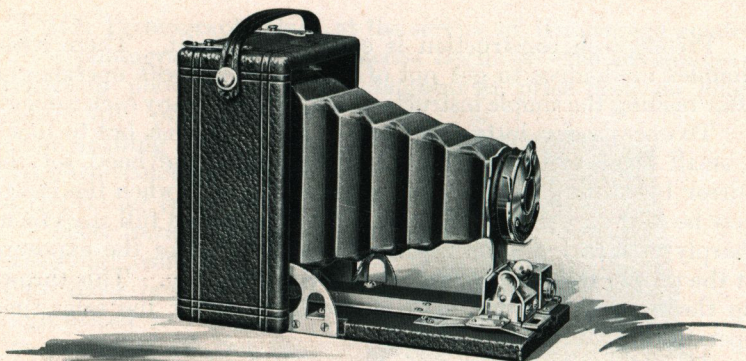
Premograph No. 2 is handsomely finished. It is covered with genuine seal grain leather and may be fitted with the best anastigmat lenses as listed. It loads in daylight with the Premo Film Pack, offering all the convenience of this simple film method.

PRICES.

Premograph No. 2 with R. R. Lens	3¼ x 4¼
Premograph No. 2 with Zeiss Tessar IIb, No. 4 Lens	\$20.00
Premograph No. 2 with Cooke Ser. III, No. 3½D Lens	51.00
Premograph No. 2 with Zeiss Kodak Anastigmat, f/6.3, No. 2 Lens	54.00
Premograph No. 2 Carrying Case (sole leather)	38.50
Premo Film Pack (12 exposures)	2.50
	.70

CAPACITY—12 exposures without reloading. SIZE OF CAMERA—4¼ x 5½ x 6½ inches. WEIGHT—44 ounces. LENS—Rapid Rectilinear in barrel with Iris diaphragm stops. SHUTTER—Premograph Reflecting. TRIPOD SOCKETS—Two. Rack and Pinion for focusing.

PREMOETTE No. 1 & No. 1A



THE remarkable compactness of the Premoettes, considering the good size pictures which they make, is astonishing to one who sees one of these dainty little models for the first time.

They are by far the smallest and lightest cameras made for pictures of practical size—so small that even a boy can easily carry one in his pocket. And the Premoettes make pictures of as good quality as ordinarily will be obtained with cameras of the largest sizes—pictures of good size for snap shot work and portraiture—of excellent quality for enlargement.

Then it's so easy to make pictures with these cameras. They load in daylight in the same simple way as the Premo Juniors, and they offer all the conveniences of Premo Film Pack operation. Exposures may be removed at any time for development, and the No. 2 Premo Film Pack Tank may be used for them, if desired.

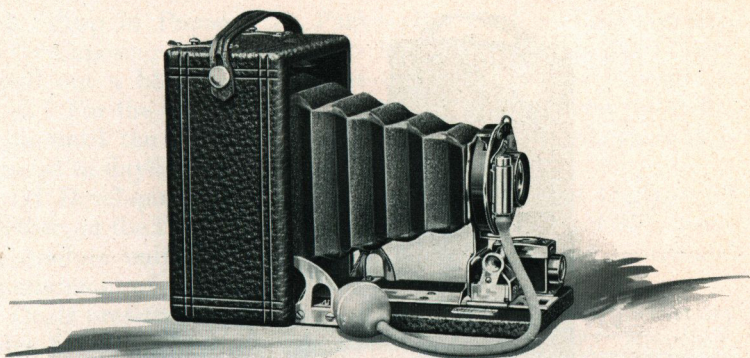
These two cameras differ only in the size of pictures which they make. They have substantial seal grain covering, all metal parts are nickeled and the general appearance of each camera is most attractive.

PRICES.

	No. 1 2¼ x 3¼	No. 1A 2½ x 4¼
Premoette, with Meniscus Lens and Premoette Shutter	\$5.00	\$6.00
Carrying Case	.75	.85
Premo Film Pack (12 exposures),40	.50

CAPACITY—12 film exposures. DIMENSIONS—No. 1, 1¼ x 3 3-16 x 4½ in.; No. 1A, 2½ x 3½ x 5½ in. WEIGHT—No. 1, 11 ounces; No. 1A, 16 ounces. LENS—Single Meniscus of the best quality. SHUTTER—Premoette automatic for time, bulb and instantaneous exposures. Tripod Sockets and Reversible Finder.

PREMOETTE SPECIAL



THESE cameras will meet the growing demand for dainty little instruments of the Premoette type, fitted with high grade equipments of lens and shutter.

Premoettes Nos. 1 and 1A Special possess all the advantages of compactness, light weight, daylight loading and film pack convenience of the regular models, but instead of single lenses and Premoette shutters, are fitted with double rapid rectilinear lenses and single valve automatic shutters. They can also be fitted with anastigmat lenses and compound shutters for those desiring the very finest possible equipment in so diminutive a camera.

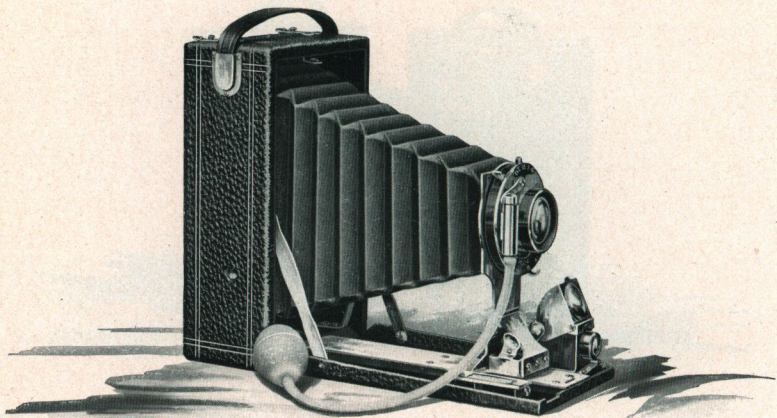
The finish of these cameras is very rich. The covering is of the finest seal grain leather, the metal parts are highly nickeled and the bellows is of selected red Russia leather. The shape of the pictures made by the Premoette No. 1A Special lends itself particularly well to full length portraiture and landscape subjects.

PRICES.

	No. 1 2½ x 3¼	No. 1A 2½ x 4¼
Premoette Special with R. R. Lens and S. V. Auto. Shutter	\$ 9.00	\$10.00
Premoette Special with Zeiss Kodak Anastigmat Lens f. 6.3 and Compound Shutter	40.25	41.30
Premoette Special Carrying Case (sole leather)	1.00	1.25
Premo Film Pack (12 exposures)	.40	.50

CAPACITY—12 film exposures. DIMENSIONS—No. 1 Special, 2½ x 3¼ x 4¼; No. 1A Special, 2½ x 3½ x 5½. WEIGHT—No. 1 Special, 11 ounces; No. 1A Special, 16 ounces. LENS—Rapid Rectilinear. SHUTTER—Single Valve Automatic. See page 39. TRIPOD socket, reversible finder, and automatic standard clamp.

FILM PREMOS No. 1



SIZE, Weight, Optical Equipment, Convenience, Results, Price—these are the half dozen features which will determine the desirability of any film camera to one who wishes the best and most satisfactory camera for his money. And the choice of a camera will be very much simplified, if the prospective purchaser will examine every camera which he considers, in reference to these six points.

Film Premos No. 1, continuing the advantages of the Premettes for larger size pictures, meet these requirements ideally, as the following facts will show—facts which any one can very easily verify at the dealers:

SIZE—Film Premos No. 1 are much smaller than any other cameras for pictures of corresponding sizes.

WEIGHT—Film Premos No. 1 are the lightest cameras on the market.

OPTICAL EQUIPMENT—Film Premos No. 1 are fitted with excellent rapid rectilinear lens made by the Bausch & Lomb Optical Co. They are amply efficient for all ordinary photographic purposes. Shutters are single valve automatic and absolutely reliable. Lenses and shutters of this grade will be found on no other cameras at our prices.

CONVENIENCE—The supreme test of every camera.

Of Loading—Film Premos are loaded in daylight with Premo Film Pack. (See pages 4 and 5.) **To load**—Open hinged

FILM PREMO No. 1

back—drop in Premo Film Pack—close back and all is ready.

Of Exposing—To expose with Film Premos, open the camera—pull out a black paper—press the bulb and the exposure is made. For the next, pull out another paper and press the bulb; so on until the entire pack of twelve is exhausted, when it is removed in daylight and a fresh one substituted.

Of Developing—Film Pack films are developed singly or all together, in the Premo Film Pack Tank (pages 34 and 35), insuring absolute uniformity of development, certainty of results and the minimum of care and labor.

Or, if preferred, they may be developed in the tray, just as dry plates, for each one is packed separate from the other. Recollect, too, one or more films can be removed at any time for development in either tank or tray—a unique and very desirable feature—and this without injury to the films which are as yet unexposed.

RESULTS—With the excellent lenses and shutters with which these cameras are fitted, results are assured if the film is right. And the film is right, for the film used in the Premo Film Pack is from the same stock as the Eastman N. C. film—the film with twenty years of experience behind it.

As for finish and workmanship, these cameras leave nothing to be desired. They are made of seasoned wood, with front and back panel of aluminum and coverings of fine grain leather.

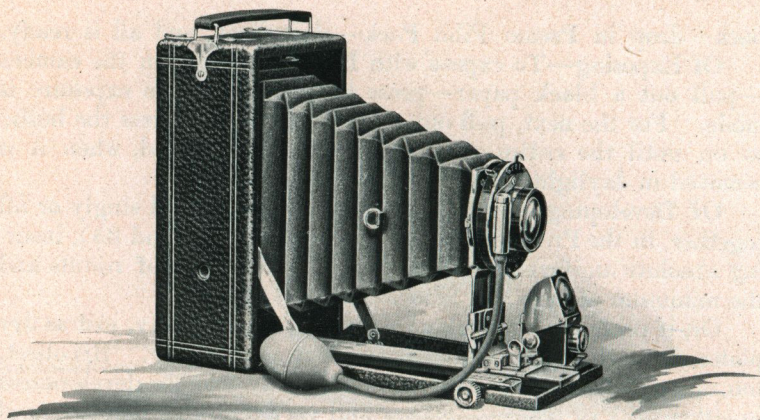
Special attention is called to the 5 x 7 Film Premo No. 1. For those amateurs who wish large size pictures, this camera is an exceptionally attractive proposition, both as regards its very moderate price and its remarkable compactness for such large size pictures. It differs slightly from the smaller cameras in that it has a specially constructed focusing lever, by means of which the camera can be focused for any distance in an instant.

PRICES.

	3¼ x 4¼	3¼ x 5½	4 x 5	5 x 7
Film Premo No. 1 with R. R. Lens and Single Valve Auto. Shutter . . .	\$10.00	\$12.50	\$12.50	\$20.00
Sole Leather Carrying Case . . .	1.25	1.50	1.50	2.25
Premo Film Pack (12 exposures)70	.80	.90	1.60

CAPACITY—12 film exposures. BOX—Mahogany. DIMENSIONS—3¼ x 4¼, 2½ x 4 x 5½ in.; 3¼ x 5½, 2¼ x 4 x 6½ in.; 4 x 5, 2¼ x 4¼ x 6 in.; 5 x 7, 2½ x 5¼ x 8½ in. WEIGHT—3¼ x 4¼, 18 ozs.; 3¼ x 5½, 20 ozs.; 4 x 5, 20 ozs.; 5 x 7, 46 ozs. LENS—Rapid rectilinear. SHUTTER—Single valve automatic. See page 39. TRIPOD SOCKETS—Two. FINDER—Reversible brilliant.

FILM PREMO No. 3



ALL that we have just said of Film Premo No. 1, as regards weight, compactness and convenience, is equally true of Film Premo No. 3. This fine model—the highest type of film cameras—is made along the same general lines as Film Premo No. 1, but incorporates special additional features which will appeal to him who wants the most complete film camera that money can buy.

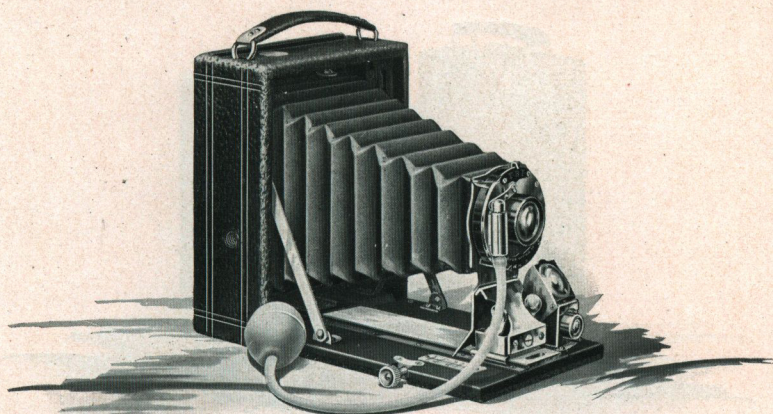
A rack and pinion for quick and accurate focusing is supplied, a rising and falling front for decreasing or augmenting foreground, and the construction of the instrument permits the fitting of all standard anastigmat lenses. The box is made of thoroughly seasoned ebonized wood, front bed and back panel of aluminum, and metal parts are highly nickeled. Compare the advantages of this model and its prices, with those of any other film cameras in existence.

PRICES.

Film Premo No. 3 with R. R. Lens and S. V. Auto. Shutter	$3\frac{1}{4} \times 4\frac{1}{4}$	$3\frac{1}{4} \times 5\frac{1}{2}$	4×5
With Planatograph Lens and D. V. Auto. Shutter	\$16.00	\$18.00	\$18.00
With Zeiss Kodak Anastigmat f -6.3 and D. V. Auto. Shutter	21.00	23.00	23.00
Ditto, with Compound Shutter	41.50	48.00	48.00
Sole Leather Carrying Case	47.30	55.90	55.90
Premo Film Pack (12 exposures)	1.25	1.50	1.50
	.70	.80	.50

CAPACITY—12 Film exposures. BOX—Mahogany, Bed and Back Aluminum. DIMENSIONS— $3\frac{1}{4} \times 4\frac{1}{4}$, 2 $\frac{1}{2}$ x 4 x 5 $\frac{1}{2}$; $3\frac{1}{4} \times 5\frac{1}{2}$, 2 $\frac{3}{8}$ x 4 x 6 $\frac{1}{4}$; 4 x 5, 2 $\frac{3}{8}$ x 4 $\frac{1}{4}$ x 6 $\frac{1}{4}$. WEIGHT— $3\frac{1}{4} \times 4\frac{1}{4}$, 24 ounces; $3\frac{1}{4} \times 5\frac{1}{2}$, 26 ounces; 4 x 5, 26 ounces. LENS—Rapid Rectilinear. SHUTTER—Single Valve Automatic. See page 39. TRIPOD SOCKETS—Two. FINDER—Reversible brilliant.

POCKET PREMO C.



HERE'S an inexpensive pocket camera of unusual efficiency, taking films or plates with equal facility. It's a real pocket camera too. So small that it can be readily carried in any ordinary coat pocket, and it has a ground glass upon which every subject may be sharply focused, whether films or plates are used.

When films are used, they are loaded in daylight, and developed singly or all together, by tray or tank system. For focusing, a rack and pinion is provided, also reversible, brilliant finder and an accurate focusing scale with universal stop for use in instantaneous or other work, when the ground glass is not available.

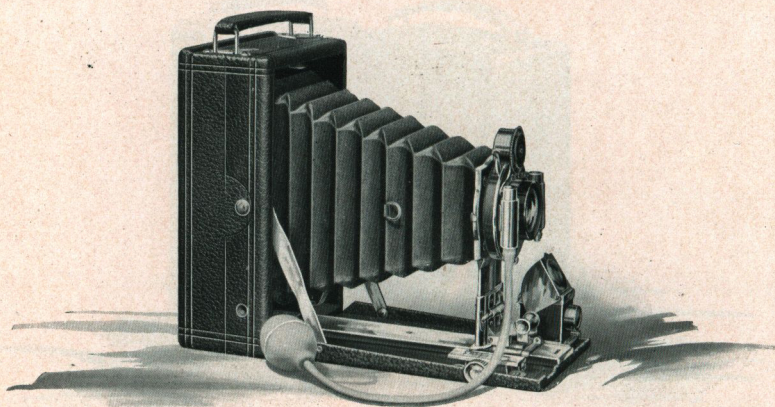
The demand for a postal card size of this model has been so insistent that we have added this year a $3\frac{1}{4} \times 5\frac{1}{2}$ Pocket Premo C, having all the advantages of the smaller model. The shape is particularly effective for landscape composition and full length portraiture. Metal parts are nicked, coverings are of selected seal grain leather and prices include one double plate holder.

PRICES.

	$3\frac{1}{4} \times 4\frac{1}{4}$	$3\frac{1}{4} \times 5\frac{1}{2}$
Pocket Premo C with R. R. Lens and S. V. Auto. Shutter	\$12.00	\$15.00
Double Plate Holder	.80	1.00
Sole Leather Carrying Case	1.50	1.75
Premo Film Pack Adapter	1.00	1.50
Premo Film Pack (12 exposures)	.70	.80

CAPACITY—12 film or 2 plate exposures. BOX—Mahogany. BED—Mahogany with rack and pinion for focusing. FINDER—Reversible, hooded brilliant. TRIPOD SOCKETS—Two. LENS—Rapid Rectilinear. SHUTTER—S. V. Automatic. See Page 39. DIMENSIONS— $3\frac{1}{4} \times 4\frac{1}{4}$, $2 \times 4 \times 5\frac{1}{2}$ in.; $3\frac{1}{4} \times 5\frac{1}{2}$, $2\frac{1}{4} \times 4\frac{1}{4} \times 6\frac{1}{4}$ in. WEIGHT— $3\frac{1}{4} \times 4\frac{1}{4}$, 21 ounces; $3\frac{1}{4} \times 5\frac{1}{2}$, 27 ounces.

FILMPLATE PREMO



AS light and compact as an ordinary film camera, the Filmplate Premo uses films or plates with equal facility. For plates, loads with regular Premo double plate holder. For films, loads in daylight with Premo Film Pack Adapter, in the same simple manner. Either plate holder or film pack adapter can be removed at any time for sharp focusing on ground glass.

When films are used, the Filmplate Premo, therefore, combines the advantages of ground glass focusing with daylight loading, tank development and other film conveniences. And all this at a moderate price without increasing weight or bulk, or the use of special adjustment of any kind.

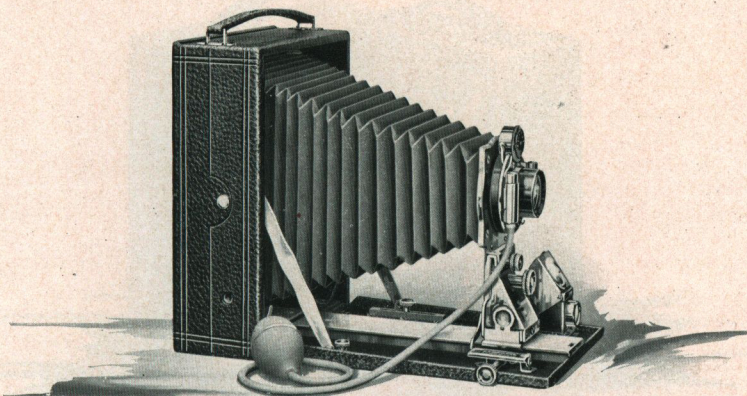
Has rack and pinion for fine focusing, rising and falling front, metal parts are handsomely nickeled, and covering is of fine seal grain leather. Price includes film pack adapter and plate holder.

PRICES.

Filmplate Premo with Planatograph Lens and	3¼ x 4¼	3¼ x 5½	4 x 5
D. V. Auto Shutter	\$24.00	\$26.50	\$26.50
With Zeiss Kodak Anastigmat <i>f</i> .6.3 Nos. 2, 3 and			
3, and Auto Shutter	44.50	51.50	51.50
Ditto with Compound Shutter	52.80	62.30	62.30
Sole Leather Carrying Case,	1.75	2.00	2.00
Premo Film Pack (12 exposures)70	.80	.90

CAPACITY—12 film or 2 plate exposures. BOX—Mahogany. BED—Aluminum. Rack and pinion for fine focusing. FRONT—Rising and falling, pinion actuated. FINDER—Reversible brilliant. TRIPOD SOCKETS—Two. LENS—Planatograph. SHUTTER—Double Valve Automatic. See page 38. DIMENSIONS—3¼ x 4¼, 2 x 4½ x 5¾ in.; 3¼ x 5½, 2 x 4½ x 6¾ in.; 4 x 5, 2½ x 4¾ x 6¾ in. WEIGHT—3¼ x 4¼, 26 ozs.; 3¼ x 5½, 30 ozs.; 4 x 5, 28½ ozs.

FILMPLATE PREMO 5 x 7



THOSE who wish 5 x 7 pictures are usually more particular as to correctness of composition, accuracy of focus and adaptability to different conditions; and a camera of such capabilities has heretofore been associated with comparatively heavy outfits which many have considered too bulky for general amateur use.

But the 5 x 7 Filmplate Premo places at the service of any photographer all these advantages combined in a camera which takes films or plates with equal facility, offering ground glass focusing with either, but which, when compared with any other instrument intended solely for either films or plates, is found to be very much smaller and very much lighter.

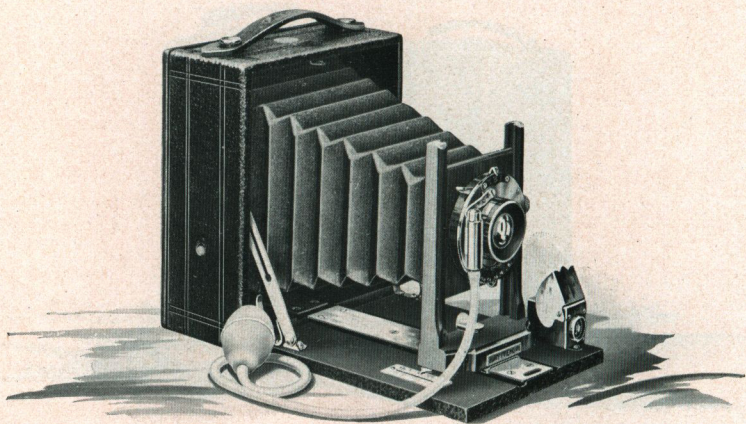
It has both rising and sliding front, swing bed, reversible brilliant finder and focusing scale. Price includes Premo Film Pack Adapter and one double plate holder.

PRICES.

	5 x 7.
Filmplate Premo with Planatograph Lens and D. V. Auto. Shutter	\$35.00
With Zeiss Kodak Anastigmat f. 6.3 No. 5, and Auto. Shutter	74.50
Ditto with Compound Shutter	85.05
Sole Leather Carrying Case	2.50
Premo Film Pack (12 exposures)	1.60

CAPACITY—12 Film or 2 plate exposures. BOX—Mahogany. BED—Aluminum, with rack and pinion for focusing. FRONT—Rising and sliding. FINDER—Reversible brilliant hooded. TRIPOD SOCKETS—Two. LENS—Planatograph. SHUTTER—Double Valve Automatic. See page 38. DIMENSIONS—2½ x 6 x 8½ in. WEIGHT—48 ounces.

PONY PREMO No. 1



THIS, the first of the Pony Premo series, while designed more particularly for beginners, and sold at a very modest price, possesses that one feature which practically doubles the value of every Pony Premo camera to the owner. That is, it offers the prime advantage of every plate camera—a ground glass for sharp focusing and accurate composition—with the use of either dry plates or the Premo Film Pack with all its convenience of daylight loading, light weight, simple operation and tank development.

The instrument itself is very simple in all its parts, yet thoroughly efficient for all ordinary work. A rising and falling front is supplied, also focusing scale and reversible, hooded brilliant finder for use when ground glass is not convenient. The operation of the Pony Premo No. 1 is so easy that anybody can make good pictures on either films or plates with it.

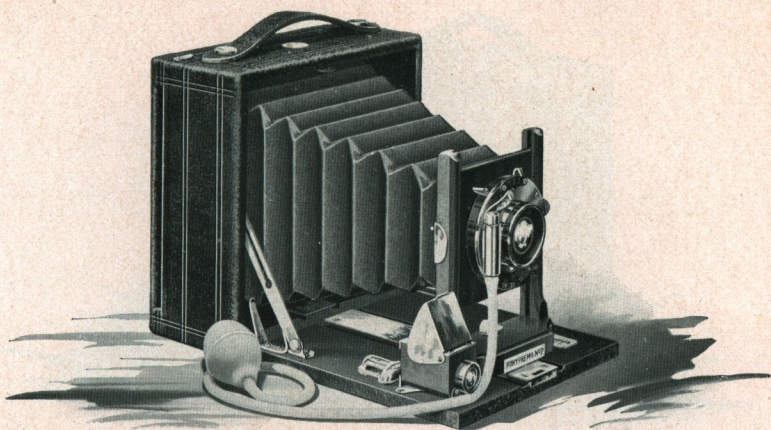
Metal parts are nickered, covering is seal grain and price includes carrying case and one double plate holder.

PRICE.

Pony Premo No. 1, with R. R. lens and S. V. Auto. Shutter	4 x 5
Premo Film Pack Adapter	\$12.00
Premo Film Pack (12 exposures)	1.50
	.90

CAPACITY—12 films or 2 plate exposures. BOX—Mahogany, leather covered. FRONT—Rising and falling. CARRYING CASE—Imitation leather with compartment for holders. FINDER—Reversible, hooded brilliant. TRIPOD SOCKETS—Two. LENS—Rapid Rectilinear. SHUTTER—Single Valve Automatic. See page 39. DIMENSIONS—2½ x 5¼ x 6¼ inches. WEIGHT—24 ounces.

PONY PREMO No. 2



WITH single valve automatic shutter and same general characteristics as the Pony Premo No. 1, this camera has the additional advantage of reversible back—an important consideration to many amateurs. The back can be instantly and easily reversed for horizontal or vertical pictures, so that it is not necessary to change the position of the camera itself, for either style.

Ground glass focusing, combined with the use of either films or plates, and the excellent equipment of this model for general work, make it an exceptional value at the price.

Supplied with Rapid Rectilinear Lens, single valve automatic shutter, hooded reversible finder, spirit level and rising and falling front. Covering is of grain leather and metal parts nickered.

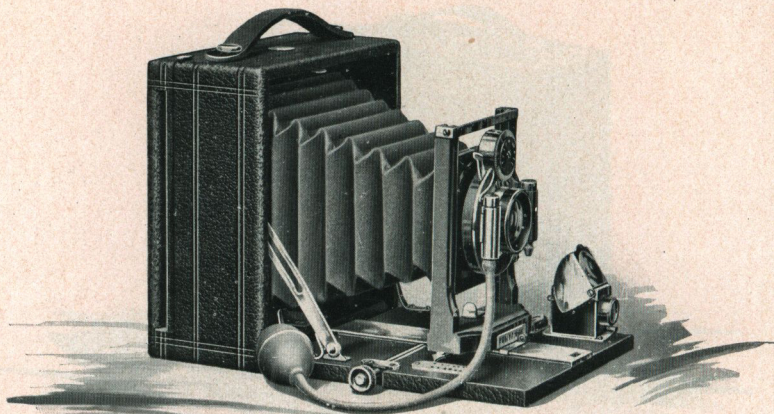
An accurate spirit level is attached to the bed and the price includes one double plate holder and a carrying case with a space for the camera and several holders. The wood used in the construction of this camera is kiln dried, hand polished mahogany.

PRICES.

	4 x 5	5 x 7
Pony Premo No. 2 with R. R. Lens and S. V. Auto. Sh.	\$14.00	18.50
Premo Film Pack Adapter	1.50	2.50
Premo Film Pack (12 exposures)	.90	1.60

CAPACITY—12 Film or 2 plate exposures. BOX—Mahogany. BACK—Reversible. FRONT—Rising and falling. FINDER—Hooded brilliant, reversible. TRIPOD SOCKET—One. LENS—Rapid Rectilinear. SHUTTER—Single Valve Automatic. See page 39. CARRYING CASE—Imitation leather with compartment for holders. DIMENSIONS—4 x 5, 2½ x 6 x 6 in.; 5 x 7, 3¼ x 8¼ x 8¼ in. WEIGHT—4 x 5, 28 ounces; 5 x 7, 50 ozs.

PONY PREMO No. 3



AT a very moderate price, this camera has all the advantages of the two preceding models, with the important additions of rack and pinion focusing attachment, longer bellows draw and Bausch & Lomb double valve automatic shutter.

When used with the supplementary lenses of the Premo Optical Outfit this camera will produce excellent results in copying, enlarging, telephoto work and portraiture. And it can be loaded for every purpose with either films or plates, as the operator may choose.

Pony Premo No. 3 is handsomely finished, the shutters and all metal parts are nicked, the covering is grain leather, and wood parts are thoroughly seasoned mahogany.

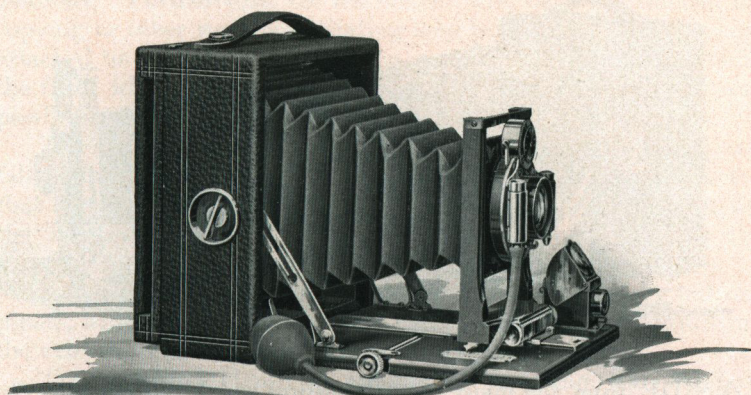
It has rising and falling front, reversible brilliant finder, spirit level and reversible back. The price includes one double plate holder and long style carrying case of genuine sole leather.

PRICES.

	4 x 5	5 x 7
Pony Premo No. 3, with R. R. Lens and D. V. Auto Shutter	\$20.00	\$26.00
Premio Film Pack Adapter	1.50	2.50
Premio Film Pack (12 exposures)	.90	1.60

CAPACITY—12 Film or 2 plate exposures. BOX—Mahogany, leather covered. BED—Mahogany; rack and pinion attachment for fine focusing. BACK—Reversible. FRONT—Rising and falling. FINDER—Hooded brilliant, reversible. TRIPOD SOCKET—One. LENS—Rapid Rectilinear. SHUTTER—Double Valve Automatic. See page 38. CARRYING CASE—Sole leather, with compartment for holders. DIMENSIONS—4 x 5, 2½ x 6 x 6 in.; 5 x 7, 3¼ x 8¼ x 8¼ in. WEIGHT—4 x 5, 33 ozs.; 5 x 7, 56 ozs.

PONY PREMO No. 4



DESIGNED for a wider range of work than its three predecessors in this series, Pony Premo No. 4 has all their good points, with additional equipment of swing back, Planatograph lens, new automatic standard clamp and sufficient bellows draw to accommodate the back combination of the lens, adapting the instrument for telephoto work.

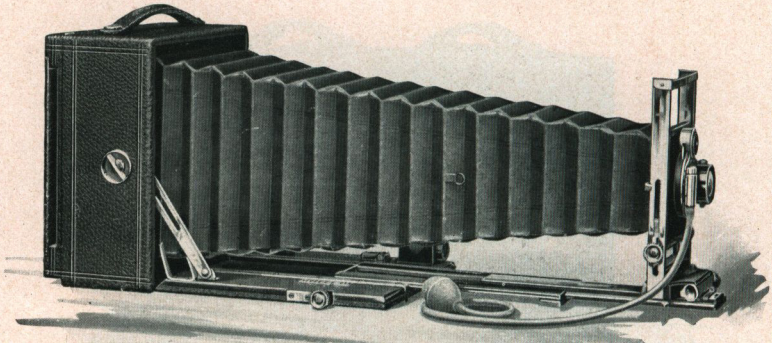
The swing back provides for the decreasing of unsightly foreground, the photographing of high structures and other such work, in which an ordinary camera would have to be tipped. For with Pony Premo No. 4, the back is easily swung to any reasonable angle and the pictures secured without the slightest distortion or leaning appearance. Films or plates may be used in this instrument with equal facility.

PRICES.

	4 x 5	5 x 7
Pony Premo No. 4, Planatograph Lens and Auto. Shutter	\$24.00	\$32.00
With Zeiss Kodak Anastigmat f. 6.3 and Auto. Shutter	49.00	71.50
Ditto, with Compound Shutter	59.80	82.05
Premo Film Pack Adapter	1.50	2.50
Premo Film Pack (12 exposures)	.90	1.60

CAPACITY—12 films or 2 plate exposures. BOX—Mahogany. BRD—Mahogany; rack and pinion for fine focusing. BACK—Reversible. SWING—Vertical. FRONT—Rising and falling. FINDER—Hooded brilliant, reversible. TRIPOD SOCKET—One. LENS—Planatograph. SHUTTER—Double Valve Automatic. See page 38. CARRYING CASE—Sole leather with compartment for holders. BELLOWS—Red leather; draw 4 x 5, 11½ in.; 5 x 7, 15½ in. DIMENSIONS—4 x 5, 2¼ x 6 x 6 in.; 5 x 7, 3¼ x 8¼ x 8¼ in. WEIGHT—4 x 5, 36 ozs.; 5 x 7, 60 ozs.

PONY PREMO No. 6



ASIDE from the many special features which this camera offers to the advanced amateur, it meets a very large and a very important need in the business and technical world.

The contractor has come to appreciate the advantage of photography in recording the progress of work and in the settlement of disputed points. The advertiser is recognizing it as one of the best aids in the selling of goods. The scientist, the horticulturist, the journalist and illustrator are using the camera continually.

The Pony Premo No. 6 can be always depended upon for satisfactory results for all such purposes, not only because of its thorough equipment, but because it insures absolute accuracy of focus and composition in its ground glass focusing feature. And while lighter and more compact than any other reversible back camera of similar design, it takes films as well and as easily as plates. Thus when special light weight and convenience are required, the camera may be loaded in daylight with the Premo Film Pack, and as a dozen films occupy about the same space as one double plate holder and are even lighter, the advantage of this camera in portability is readily appreciated.

Then, notwithstanding its wide range of work, every adjustment of this instrument is so very obvious that the most inexperienced person, by merely following the simple instructions, can at once make good pictures with it.

The regular lens of this model—our Planatograph—is of such quality that either front or back combination may be used singly for telephoto work, and the bellows is of sufficient length to accommodate high power telephoto attachments of several magni-

PONY PREMO No. 6

fications. Furthermore, the instrument will be found efficient for copying or other work necessitating long bellows draw. Rings are attached to the bellows so that the same can be drawn up taut to the front when short focus lenses are used, thus obviating any possibility of the bellows folds obstructing the rays of the lens.

The standard is composed largely of metal, and the rising and falling front is actuated by pinion device, which is so constructed that it will lock firmly at any point, affording a safe support for the heaviest lenses. The lens board is firmly fastened to the standard automatically, but is easily removable at any time.

Although the bed is triple extension, it is actuated by but one pinion, which is also provided with clever locking device, permitting the extensions to be locked firmly at any point.

The standard clamp is automatic, fastening the standard securely to the bed wherever released, and a universal bed stop is supplied so that the lens may be brought to universal focus instantly.

The swing back is pivoted at the center and operated entirely from the outside. An accurate spirit level is supplied and the camera is finished in the most careful manner.

The shutter and all metal parts are highly nicked. Wood is thoroughly seasoned hand polished mahogany, and the covering is a genuine seal grain leather.

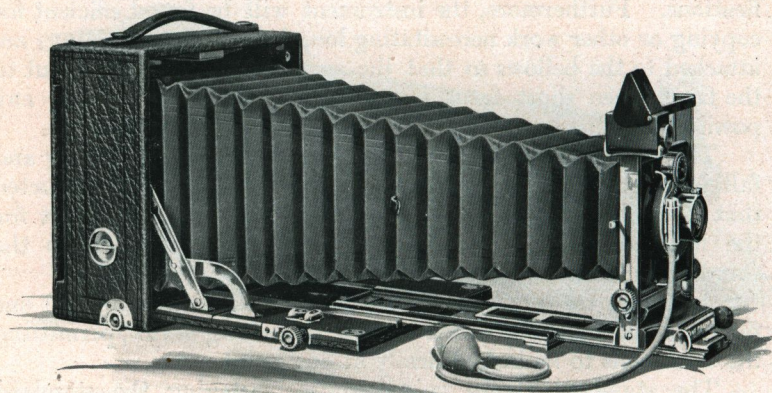
List price includes one plate holder and carrying case, which is of the best sole leather, lined with red plush and having separate compartments for camera and plate holders.

PRICES.

	4 x 5	5 x 7	6½ x 8½
Pony Premo No. 6, with Planatograph lens and D. V. Auto. Shutter	\$ 37.00	\$ 47.00	\$ 62.00
With Zeiss Kodak Anastigmat f. 6.3 Nos. 3, 5, 6 and D. V. Auto. Shutter	62.00	86.50	111.50
Ditto with Compound Shutter	72.80	97.05	124.20
With B. & L. Zeiss Protar VIIa, f. 6.3 Nos. 3, 8 and 11 and Auto. Shutter	92.50	120.00	150.50
Ditto with Compound Shutter	103.30	130.55	163.20
Premo Film Pack Adapter	1.50	2.50	
Premo Film Pack (12 exposures)90	1.60	

CAPACITY—12 film or 2 plate exposures. BOX—Mahogany. BED—Triple extension; rack and pinion actuated. BACK—Reversible. SWING—Vertical. FRONT—Rising and falling; rack and pinion actuated. LENS BOARD—Removable; size, 4 x 5, 2½ x 2½ in.; 5 x 7, 3½ x 3½ in.; 6½ x 8½, 4½ x 4½ in. FINDER—Hooded brilliant, reversible. TRIPOD SOCKETS—Two. CASE—Sole leather, plush lined with compartment for holders. LENS—Planatograph. SHUTTER—Double Valve Automatic. See page 38. BELLOWS—Red leather; draw 4 x 5, 14½ in.; 5 x 7, 19½ in.; 6½ x 8½, 24 in. DIMENSIONS—4 x 5, 3¼ x 6 x 6 in.; 5 x 7, 4 x 8¼ x 8¼ in.; 6½ x 8½, 5 x 10 x 10 in. WEIGHT—4 x 5, 3¼ lbs.; 5 x 7, 5¼ lbs.; 6½ x 8½, 8½ lbs.

PONY PREMO No. 7



THERE is no branch, no condition of amateur photography for which Pony Premo No. 7 is not admirably suited. In this model are found all the special advantages of Pony Premo No. 6, combined with those additional features which go to make the most complete hand camera manufactured for either amateur or business purposes.

Especial attention is called to the drop bed construction which permits the use of lenses of the widest angle. By unclasping the two supplementary side arms the bed can be dropped down, so as to remove it entirely from the path of the short focus lens, and a supplementary bed placed conveniently at the top of the camera when not in use, affords easy focusing facilities.

The movable extensions are constructed entirely of metal, are actuated by a single pinion and attached to the wooden bed by metal angle pieces. This construction obviates the possibility of difficulties caused by changing atmospheric conditions. The swing back is constructed on the most scientific principle and is actuated by rack and pinion, with locking device.

This camera is fitted regularly with B. & L. double valve automatic shutter of the very latest model. The lens is the Planatograph, and bellows is of such length that either of the combinations can be used singly, or high power telephoto attachments may be fitted.

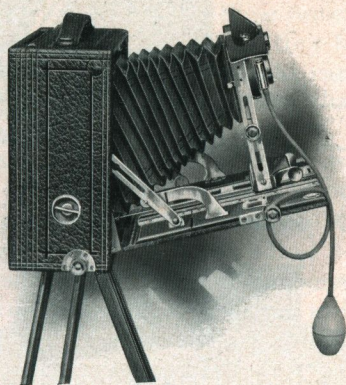
Every feature of this outfit is positive and thoroughly reliable. Nothing has been forgotten or overlooked in its construction.

PONY PREMO No. 7

The rising and falling front is operated by rack and pinion with locking device. The standard clamp is automatic, fastening firmly wherever released. An accurate double spirit level is supplied, hooded, reversible finder of the greatest brilliancy, and the back is reversible with the usual Premo simplicity and ease of operation.

The finish and general workmanship of the instrument must be seen to be appreciated. The shutter and all metal parts are highly nicked and the covering is of the best seal grain leather. The carrying case is made of leather, is lined with the best red plush and has separate compartments for the camera and six holders.

Just as all Pony Premo Cameras in 4 x 5 and 5 x 7 sizes, this model takes films or plates with equal facility, permitting ground glass focusing, daylight loading, tank development and other film conveniences when loaded with the Premo Film Pack. These advantages combined with its absolutely complete equipment make it an outfit unequalled in camera construction.

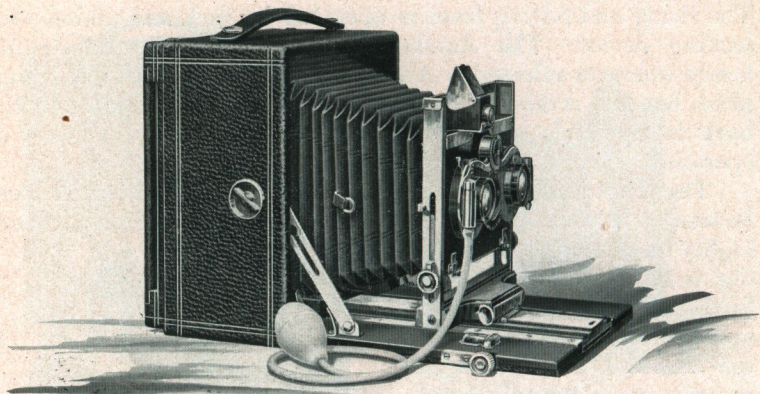


PRICES.

Pony Premo No. 7, with Planatograph Lens	4 x 5	5 x 7	6½ x 8½
and D. V. Auto Shutter	\$50.00	\$60.00	\$ 75.00
With Zeiss Kodak Anastigmat <i>f</i> .6.3 Nos. 3,			
5 and 6 and Auto Shutter	75.00	99.50	124.50
Ditto, with Compound Shutter	85.80	110.05	137.20
With B. & L. Zeiss Protar VIIa, <i>f</i> .6.3 Nos. 3,			
8 and 11 and Auto Shutter	105.50	133.00	163.50
Ditto, with Compound Shutter	116.30	143.55	176.20
Premo Film Pack Adapter	1.50	2.50	
Premo Film Pack90	1.60	

CAPACITY—12 film or two plate exposure. BOX—Mahogany. BED—Mahogany, with triple extension. BACK—Reversible. SWING—Vertical; rack and pinion actuated, with locking device. FRONT—Rising and falling; rack and pinion actuated, with locking device. LENS BOARD—Removable—Size, 4 x 5, 2½ x 2½ in.; 5 x 7, 3½ x 3½ in.; 6½ x 8½, 4½ x 4½ in. FINDER—Hooded brilliant, reversible. TRIPOD SOCKETS—Two. LENS—Planatograph. SHUTTER—Double Valve Automatic. See page 38. CARRYING CASE—Sole leather, plush lined, with compartment for holders. BELLOWS—Red leather; draw 4 x 5, 13¼ in.; 5 x 7, 19 in.; 6½ x 8½, 22 in. DIMENSIONS—4 x 5, 3½ x 6¼ x 6¼ in.; 5 x 7, 4 x 8½ x 8½ in.; 6½ x 8½, 5 x 9¼ x 9¼. WEIGHT—4 x 5, 3½ lbs.; 5 x 7, 5½ lbs.; 6½ x 8½, 8½ lbs.

STEREO PREMO



IN presenting the Stereo Premos to the public, attention is called to the fact that we have taken three of our most popular Pony Premo models and furnished them with complete Stereo equipments. Thus our Stereo cameras comprise all special features of the corresponding single models, so that there is no class of pictures obtainable with the regular camera, which cannot be made to equal advantage with the Stereo.

Furthermore, by merely using an extra lens board and single lens and shutter, regular 5 x 7 pictures are easily made. Hence the Stereo Premo is practically two cameras in one, or better, four cameras in one, as films or plates can be used with equal facility for either stereoscopic or single pictures.

No Stereo cameras of equal merit have ever been produced by any other manufacturer.

The regular equipment comprises B. & L. Automatic Stereo shutter and Planatograph lenses. The most desirable anastigmat lenses can, however, be easily fitted when desired. List price includes camera, double plate holder, sole leather carrying case and one extra lens board.

PRICES.

No. 4 Stereo Premo, Planatograph Lenses, <i>f</i> .8	\$50.00
No. 6 Stereo Premo, Planatograph Lenses, <i>f</i> .8	65.00
No. 7 Stereo Premo, Planatograph Lenses, <i>f</i> .8	78.00

For prices on these cameras with Anastigmat Lenses, see page 33.

THE VIEW CAMERAS

FOR commercial photographers and in all work of a semi-professional nature we offer remarkable values in view cameras. In compactness, range of work and efficiency, there are no view cameras on the market which will bear favorable comparison with our various models at equal prices.

We have always given particular attention to cameras of this class, and in the case of all three that we list, especial attention is called to the rigidity and strength obtained without sacrifice of compactness and easy manipulation of parts. Thus these cameras will withstand the hardest usage, while at the same time they fold up very compactly and are light in weight and easy to carry. The cameras are finely finished, all wooden parts are hand polished, and the metal trimmings are of lacquered brass.

Every adjustment of importance to the worker in this class of photography is provided. Each view camera is fitted with horizontal and vertical swing, reversible back, rising and falling front, rack and pinion focusing attachment, and they are all constructed so that lenses of extreme angle may be used.

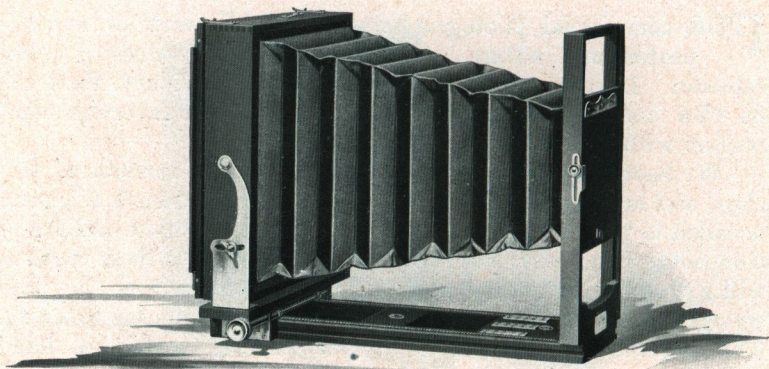
An exclusive feature offered this year, is the supplementary light-trap incorporated in the construction of all our view camera backs, and which in reality forms a double light-lock. See illustration.

This trap automatically closes the instant the slide is withdrawn and remains tightly closed over the slide opening until the slide is again inserted. This makes it impossible for any light to reach the plate, should the light-lock in the holder be defective in any manner, or should the slide be inserted cornerwise. It is the invention of one of the most prominent photographers in the country, and all who have ever used view cameras will appreciate its importance.

The list price of all view cameras includes a durable felt-lined canvas case and one plate holder. In each case separate compartments are provided for the camera and several plate holders, excepting for R. O. C. View. The regular case for this camera is of the square style without partition. Long case can, however, be supplied when desired, at a slight advance in price.



THE R. O. C. VIEW



THIS is the most efficient and reliable view camera ever offered to commercial photographers at such low prices. It is built on very strong lines and provided with those adjustments so necessary to the professional worker. The front standard being firmly attached to the bed is extremely rigid and hence will accommodate the heaviest lenses. Focusing is from the back entirely, a convenient rack and pinion attachment being furnished which moves the complete back to any point on the bed desired, where a clamping device fastens it firmly. The camera has both vertical and horizontal swing, rising and falling front, and reversible back, equipped with our new supplementary light trap.

It is especially adapted for interior work as the back can be moved as close to the front as desired, so that lenses of extreme wide angle may be readily used.

All wood parts of the R. O. C. View are of mahogany finish, the metal is lacquered brass and the camera folds up compactly.

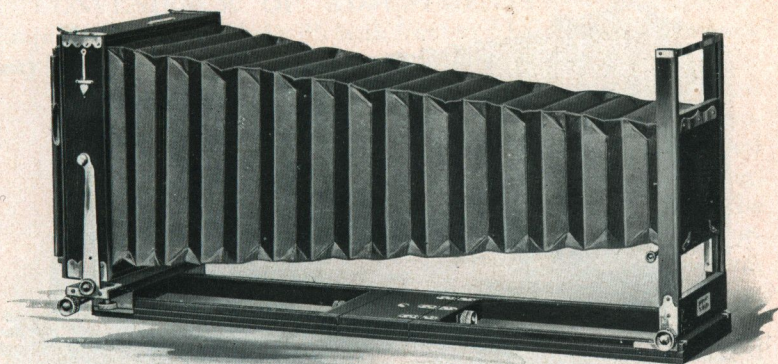
The outfit as listed comprises camera, one plate holder and carrying case. The case is of the square style without partition.

PRICES.

	5 x 7	6½ x 8½	8 x 10
R. O. C. View	\$15.00	\$16.00	\$17.00
Symmetrical Lens and Unicum Shutter (extra)	10.00	15.00	18.00
Symmetrical Lens and D. V. Auto. Shutter (extra)	13.50	18.50	21.50

BELLOWS DRAW—5 x 7, 14 in.; 6½ x 8½, 15½ in.; 8 x 10, 17 in. WEIGHT—5 x 7, 4 lbs.; 6½ x 8½, 4¼ lbs.; 8 x 10, 5¼ lbs. SIZE OF LENS BOARD—5 x 7, 3¼ x 3¼; 6½ x 8½, 4¼ x 4¼; 8 x 10, 5 x 5; Carrying Case, square style with compartment for holders.

EMPIRE STATE



THE Empire State for years has been a favorite among the most exacting commercial photographers and those who use an exclusively tripod outfit for scientific or other work. This camera has a very great focal capacity which fits it for copying, long distance, and telephoto work in general. Furthermore, it is provided in the more popular sizes with both front and back focus pinion actuated, so that the back may be racked up close to the front in such manner that the widest angle lenses may be used without cutting off. The 14 x 17 and larger sizes are made with back focus only. It also has both horizontal and vertical swing, reversible back, with new supplementary light trap, and rising front actuated by rack and pinion.

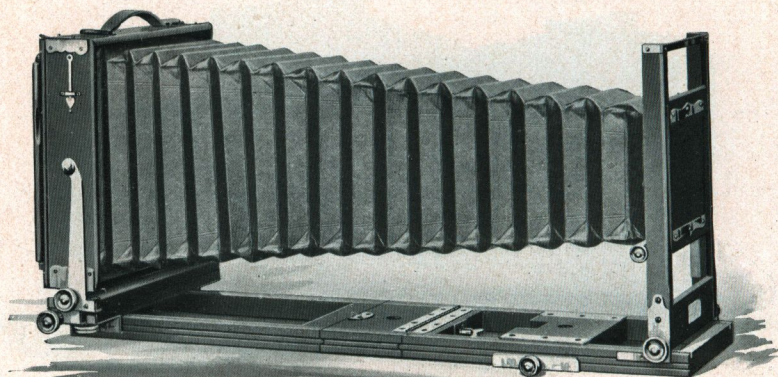
The Empire State is a very handsome model. All wood used in its construction is highly polished mahogany, and the metal parts are of the best lacquered brass. A carrying strap is attached to the top of the box. Price includes holder and carrying case. Prices for larger sizes on application.

PRICES.

	5 x 7	6½ x 8½	8 x 10	11 x 14	14 x 17
Empire State	\$21.00	\$22.00	\$25.00	36.00	\$60.00
Symmetrical Lens and Unicum					
Shutter (extra)	10.00	15.00	18.00		
Symmetrical Lens and D. V. Auto					
Shutter (extra)	13.50	18.50	21.50		

BELLOWS DRAW—5 x 7, 22 in.; 6½ x 8½, 27 in.; 8 x 10, 30 in.; 11 x 14, 37 in.; 14 x 17, 48 in.
 WEIGHT—5 x 7, 6½ lbs.; 6½ x 8½, 7½ lbs.; 8 x 10, 9½ lbs.; 11 x 14, 16 lbs.; 14 x 17, 23¼ lbs.
 SIZE OF LENS BOARD—5 x 7, 3¼ x 3¼ in.; 6½ x 8½, 4¼ x 4¼ in.; 8 x 10, 5 x 5 in.; 11 x 14, 5¾ x 5¾ in.; 14 x 17, 7 x 7 in. CARRYING CASE—long style cameras with compartment for holders.

THE EMPIRE STATE No. 2



THIS new camera is designed with the idea of producing, at a moderate price, a camera for commercial work, so complete, so convenient, and so reliable, that the most particular photographer under the most exacting conditions of commercial photography, can wish for no convenience or adjustment which it does not possess.

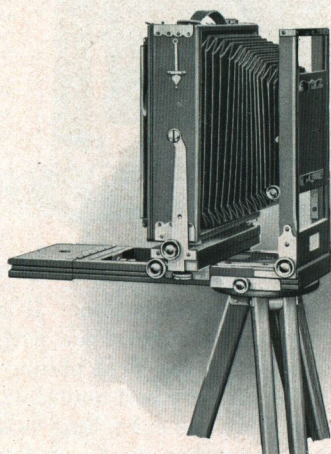
EASE OF SETTING UP—No other view camera can be set up as quickly as the Improved Empire State. It is removed from carrying case by strap handle; the front extension is piano hinged and drops into place upon release of automatic catch at top; and—here's a saving in time—the extension is clamped securely to the bed block, not by the old fashion long threaded thumb screw, but by means of a specially constructed locking device which locks by merely being pushed in and given a quarter turn. The back extension is detachable, but locks in exactly the same manner.

SLIDING TRIPOD BLOCK—This new device slides back and forward in the front extension, clamping rigidly at any point. A very important feature, as it makes it possible to always support the box of the camera directly above the tripod, when short focus lenses are used. It is an absolute preventive of that sagging of the front, noticeable where the tripod is always attached at the center.

BELLOWS SUPPORT—Negatives marred by bellows sagging are impossible with this instrument. A spring arrangement attached to the inside bellows frame automatically keeps the bellows up in place, no matter what focus of lens is used. When the camera is closed this device folds automatically.

THE EMPIRE STATE No. 2

CONVENIENCE OF ADJUSTMENTS—The Improved Empire State is provided with both front and back focus. The back may be racked up close to the front, accommodating lenses of the



Tripod may be attached at any point.

widest angle. The lens board is very large, will accommodate the heaviest lenses and is mounted in a strong, perfectly rigid standard. The back is reversible and incorporates our new supplementary light-excluding device. Vertical and horizontal swings are provided, both operated by rack and pinion movement. The rising and falling front has great latitude and is operated by rack and pinion. And the large nuts which control all these adjustments are located on the right hand side of the camera.

Whereas, the corresponding nuts for binding, are all located on the left hand side. This avoids both confusion between binding and operating parts and the tendency to tighten a part while manipulating it, as happens when using double milled heads.

STRENGTH AND STABILITY

—This instrument is made of hand polished mahogany, thoroughly kiln dried. The corners are dovetailed and reinforced by brass angle pieces. The outfit is very compact, by no means heavy, and price includes case and one double holder.



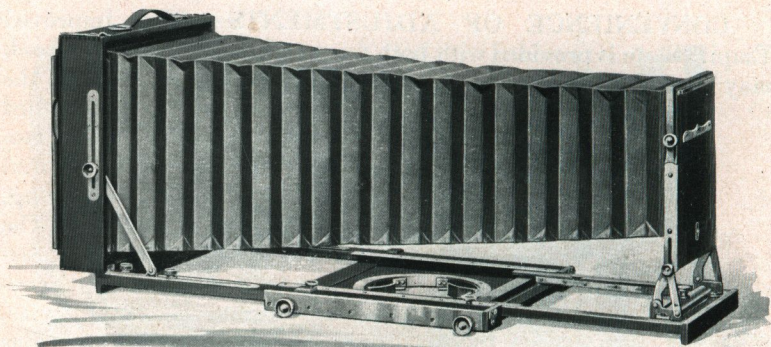
Automatic Bellows Support.

PRICES.

	5 x 7	6½ x 8½	8 x 10
Empire State No. 2	\$23.00	\$25.00	\$28.00
Symmetrical Lens and Unicum Shutter (extra)	10.00	15.00	18.00
Symmetrical Lens and D. V. Auto Shutter (extra)	13.50	18.50	21.50

BELLOWS DRAW—5 x 7, 22 in.; 6½ x 8½, 27 in.; 8 x 10, 30 in. **WEIGHT**, 5 x 7, 7¼ lbs.; 6½ x 8½, 8¾ lbs.; 8 x 10, 11¼ lbs. **SIZE OF LENS BOARD**—5 x 7, 3¼ x 3¼ in.; 6½ x 8½, 4¼ x 4¼ in.; 8 x 10, 5 x 5 in. **CARRYING CASE**—Canvas, long style, with compartment for holders.

PREMO VIEW CAMERA



THIS is the camera *de luxe* of view camera construction. It is made to combine a strikingly handsome appearance with equipment which will meet every condition that the field photographer will encounter. And it is made of the very best materials.

Focuses from both front and rear, so that the extra long bellows may be readily used for tele-photo or other work, or the body of the instrument brought forward, permitting the use of lenses of the widest angle, without "cutting off." The instrument always balances on the tripod, no matter what the position of the front and back; has vertical and horizontal swing, and extreme rising front easily manipulated. Back is reversible, with new supplementary light trap; lens board removable and very large; standard support strong and rigid.

The case is waterproof and is a decided novelty; a special tripod pocket being provided in the bottom, opening at the end so that the tripod may be removed at any time without disturbing the camera or plate holders. In addition, a separate compartment is provided for carrying extra lenses, focusing cloth or other accessories. Price includes camera, tripod, plate holder and case.

PRICES.

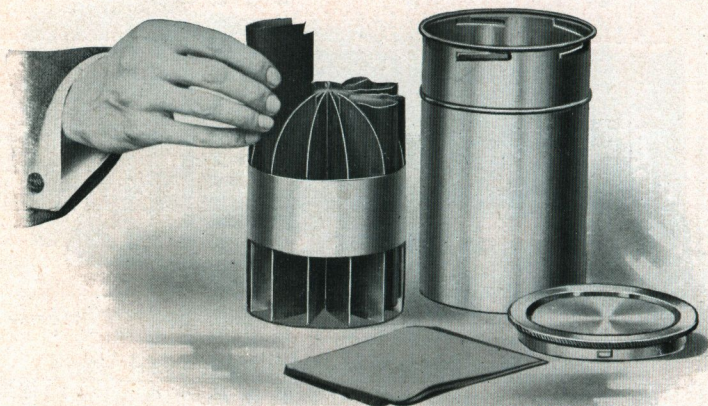
	6½ x 8½	8 x 10
Premo View Camera	\$52.00	\$58.00
Symmetrical Lens and Unicum Shutter (extra)	15.00	18.00
Symmetrical Lens and D. V. Auto Shutter (extra)	18 50	21.50

BELLOWS DRAW—6½ x 8½, 27 in.; 8 x 10 30 in; WEIGHT—6½ x 8½, 8 lbs.; 8 x 10, 9½ lbs. SIZE OF LENS BOARD—6½ x 8½, 4 x 4 in.; 8 x 10, 4½ x 4½ in. CARRYING CASE—Trunk board with space for camera holders, accessories and tripod.

SPECIAL EQUIPMENTS OF LENS AND SHUTTER.

STYLE OF CAMERA		Fitted with B. & L. Zeiss Tessar Lens, Series IIb, f. 6.3.			Fitted with B. & L. Zeiss Protar Lens, Series VIIA f. 6.3.			Fitted with Zeiss Kodak Anastigmat f. 6.3 Lens.			Fitted with Cooke Lens, Series III, f. 6.5.		
		Compound Shutter	Volute Shutter	B. & L. Auto Shutter	Compound Shutter	Volute Shutter	B. & L. Auto Shutter	Compound Shutter	Volute Shutter	B. & L. Auto Shutter	Compound Shutter	Volute Shutter	B. & L. Auto Shutter
		No. Price	No. Price	No. Price	No. Price	No. Price	No. Price	No. Price	No. Price	No. Price	No. Price	No. Price	No. Price
Film Premo No. 3	3 3/4 x 4 1/4	4L. 0S. \$59 80	4L. 1S. \$64 80	4L. 1S. \$54 00				2L. 0S. \$47 30	2L. 1S. \$52 30	2L. 1S. \$41 50	3L. 0S. \$60 80	3L. 1S. \$65 30	3L. 1S. \$51 50
		5L. 1S. 64 90	5L. 1S. 67 40	5L. 1S. 57 00				3L. 1S. 55 90	3L. 1S. 58 40	3L. 1S. 48 00	4L. 1S. 68 40	4L. 1S. 70 90	4L. 1S. 60 50
		4 x 5	1S. 64 90	1S. 67 40	1S. 57 00			3L. 1S. 55 90	3L. 1S. 58 40	3L. 1S. 48 00	4L. 1S. 68 40	4L. 1S. 70 90	4L. 1S. 60 50
	3 3/4 x 4 1/4	4L. 0S. 65 30	4L. 1S. 70 30	4L. 1S. 57 00				2L. 0S. 52 80	2L. 1S. 57 80	2L. 1S. 44 50	3L. 0S. 65 80	3L. 1S. 70 80	3L. 1S. 57 50
		5L. 1S. 71 30	5L. 1S. 73 80	5L. 1S. 60 50				3L. 1S. 62 30	3L. 1S. 64 80	3L. 1S. 51 50	4L. 1S. 74 80	4L. 1S. 77 30	4L. 1S. 64 00
Filmplate Premo	3 3/4 x 5 1/2	5L. 1S. 71 30	5L. 1S. 73 80	5L. 1S. 60 50				3L. 1S. 62 30	3L. 1S. 64 80	3L. 1S. 51 50	4L. 1S. 74 80	4L. 1S. 77 30	4L. 1S. 64 00
		4 x 5	1S. 71 30	1S. 73 80	1S. 60 50			5L. 1S. 62 30	5L. 1S. 64 80	5L. 1S. 51 50	6L. 1S. 74 80	6L. 1S. 77 30	6L. 1S. 64 00
		5aL. 2S. 95 55	5aL. 2S. 97 80	5aL. 2S. 85 00				5L. 2S. 85 05	5L. 2S. 87 30	5L. 2S. 74 50	6L. 2S. 98 05	6L. 2S. 100 30	6L. 2S. 87 50
	4 x 5	5L. 1S. 68 80	5L. 1S. 71 30	5L. 1S. 58 00	3L. 1S. \$ 90 30	3L. 1S. \$ 92 80	3L. 1S. \$ 79 50	3L. 1S. 59 80	3L. 1S. 62 30	3L. 1S. 49 00	4L. 1S. 72 30	4L. 1S. 74 80	4L. 1S. 61 50
		5aL. 2S. 92 55	5aL. 2S. 94 80	5aL. 2S. 82 00	5L. 2S. 115 55	5L. 2S. 116 30	5L. 2S. 105 00	5L. 2S. 82 05	5L. 2S. 84 30	5L. 2S. 71 50	6L. 2S. 95 05	6L. 2S. 97 30	6L. 2S. 84 50
Pony Premo No. 4	4 x 5	5L. 1S. 81 80	5L. 1S. 84 30	5L. 1S. 71 00	5L. 1S. 103 30	5L. 1S. 105 80	5L. 1S. 92 50	5L. 1S. 72 80	5L. 1S. 75 30	5L. 1S. 62 00	6L. 1S. 85 30	6L. 1S. 87 80	6L. 1S. 74 50
		5aL. 2S. 107 55	5aL. 2S. 109 80	5aL. 2S. 97 00	5L. 2S. 130 55	5L. 2S. 131 30	5L. 2S. 120 00	5L. 2S. 97 05	5L. 2S. 99 30	5L. 2S. 86 50	6L. 2S. 110 05	6L. 2S. 112 30	6L. 2S. 99 50
		7L. 3S. 153 20	7L. 3S. 151 70	7L. 3S. 140 50	7L. 3S. 163 20	7L. 3S. 161 70	7L. 3S. 150 50	7L. 3S. 124 20	7L. 3S. 122 70	7L. 3S. 111 50	8L. 3S. 161 20	8L. 3S. 159 70	8L. 3S. 148 50
	4 x 5	5L. 1S. 94 80	5L. 1S. 97 30	5L. 1S. 84 00	5L. 1S. 116 30	5L. 1S. 118 80	5L. 1S. 105 50	5L. 1S. 85 80	5L. 1S. 88 30	5L. 1S. 75 00	6L. 1S. 98 30	6L. 1S. 100 80	6L. 1S. 87 50
		5aL. 2S. 120 55	5aL. 2S. 122 80	5aL. 2S. 110 00	5L. 2S. 143 55	5L. 2S. 144 30	5L. 2S. 133 00	5L. 2S. 110 05	5L. 2S. 112 30	5L. 2S. 99 50	6L. 2S. 123 05	6L. 2S. 125 30	6L. 2S. 112 50
Pony Premo No. 6	6 1/2 x 8 1/2	7L. 3S. 166 20	7L. 3S. 164 70	7L. 3S. 153 50	7L. 3S. 176 20	7L. 3S. 174 70	7L. 3S. 163 50	7L. 3S. 137 20	7L. 3S. 135 70	7L. 3S. 124 50	8L. 3 1/2 d.L. 174 20	8L. 3 1/2 d.L. 172 70	8L. 3 1/2 d.L. 161 50
		4L. 51 00						2L. 38 50					
		3L. 0S. 51 25						1L. 0S. 40 25					
	2 1/4 x 3 1/4	4L. 0S. 53 80		4L. 1S. 48 00				2L. 0S. 41 30		2L. 1S. 35 50			
Premograph No. 2	2 1/2 x 4 1/4												
	5 x 7												
Premoette No. 1	5 x 7												
	5 x 7												
Premoette No. 1A	5 x 7												
	5 x 7												
Stereo Premo No. 4	5 x 7												
	5 x 7												
Stereo Premo No. 6	5 x 7												
	5 x 7												
Stereo Premo No. 7	5 x 7												
	5 x 7												

PREMO FILM PACK TANK



TANK Development is the greatest advance in photographic convenience, of recent years. It is one of the most important discoveries which has ever been offered to the photographer.

For Tank Development assures the veriest beginner that every pack of films placed in the tank, where the simple directions are implicitly followed, will come out developed as well or better than that pack could be developed in the tray by the most experienced photographer. It is simplicity itself. It requires no experience, no lengthy manipulation in a close dark-room. And we recommend the tank system to the most careful workers as being infinitely simpler than the older method and producing results superior to those which can be obtained by the most pains-taking tray development.

The Premo Film Pack Tank consists of two pieces—a metal receiver or frame for the films, and a tank with cover for the developing fluid.

The receiver is divided into twelve compartments—in the 5 x 7 size, six—each accommodating one film. As the film is taken from the pack, it is held between the thumb and fingers, slightly bent from top to bottom, and slipped into its respective compartment. When all the compartments are filled, the receiver is placed in tank, which has been previously filled with developer, the top replaced and the films left to develop for a certain specified time. No further attention is necessary but to turn the tank, end for end, several times during the progress of development.

PREMO FILM PACK TANK

At the expiration of the full time, open the tank, take out receiver, remove films, place them in a tray of water for a moment, then transfer to the fixing bath. Development is completed. Rinse out receiver and tank and set them aside.

The operation of removing films from the pack and loading the receiver is done, of course, in a darkened room by the light of a ruby lamp. During the day any darkened closet will suffice. To load the films in receiver, the operation will take only two or three minutes, and as soon as the top is placed on tank, it may be brought out into any light and left until development is completed.

But as the great majority of amateur photographers find their most convenient time for developing at night, and as films developed during the day are seldom ready for printing the same day, we suggest that developing be done, as far as possible, at night, when any room in which the shades are drawn will answer, and the films will be perfectly dry and ready for use the next morning.

If desired to develop less than a dozen films, one merely removes from his pack as many films as have been exposed, places them in the receiver, and proceeds in the same manner as described above.

Like all other Premo conveniences, the film pack tank is very compact. The entire outfit is self-contained and may be carried anywhere without any trouble at all.



PRICES.

Premo Film Pack Tank No. 2, for 12 $3\frac{1}{4} \times 4\frac{1}{4}$, $3\frac{1}{4} \times 5\frac{1}{2}$, or 4×5 films	\$3.50
Premo Film Pack Tank No. 3 for 6 5×7 films	4.00
Premo Tank Developing Powders in package of six, No. 2	.25
Premo Tank Developing Powders in package of six, No. 3	.35
Acid Fixing Powder, per 1 pound package	.25

EASTMAN PLATE TANK

AS so many Premos take films or plates with equal facility, we are glad to recommend to those amateurs using such Premos, the Eastman Plate Tank for the development of their plates.

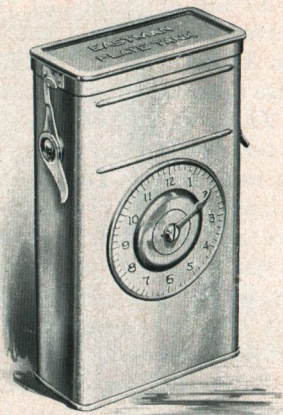
This is the latest tank success and consists of a metal solution cup with tightly fitting cover, a cage for holding twelve plates or less, and a loading block for loading the plates into the cage.

The exposed plates are loaded into the cage and placed in the tank in the dark room, and the tank cover fastened in place.

As soon as the plates have been lowered into the developer, the time is noted by watch or clock, and the hand on dial on front of tank set to indicate time when development will be complete. Development is allowed to continue for fifteen minutes, the tank being reversed several times. After development the developer is washed out of the plates, and the fixing bath poured into the tank. Fixing may be carried on in daylight.

In the $3\frac{1}{4} \times 4\frac{1}{4}$ and 4×5 sizes, the cage of plates can be developed in the regular 4×5 Premo Film Pack Tank, so that one having a 4×5 Premo Film Pack Tank needs only purchase the cage and loading block for the tank development of his plates.

Like the Premo Film Pack Tank, the loading takes only a few moments in the dark-room.



PRICES.

Eastman Plate Tank, 4×5 , including Solution Cup, Plate Cage and Loading Block	\$3.50
Ditto, 5×7	4.50
Ditto, 8×10	10.00
Kit for 4×5 Tank, to take $3\frac{3}{4} \times 4\frac{1}{4}$ plates	.50
Kit for 5×7 Tank, to take $4\frac{1}{4} \times 6\frac{1}{2}$ and $4\frac{3}{4} \times 6\frac{1}{2}$ plates	.75
Extra Adjustable Kit for 8×10	1.00
Plate Cage and Loading Block for 4×5 plates (can be used in 4×5 Premo Film Pack Tank)	1.75
Eastman Plate Tank Powders, for 4×5 tank, per package, $\frac{1}{2}$ doz.	.20
Ditto, for 5×7 tank, per package, $\frac{1}{2}$ dozen	.35
Ditto, for 8×10 tank, per package, $\frac{1}{2}$ dozen	.50
Kodak Acid Fixing Powder, per 1-pound package	.25

PREMO LENSES

ALL Premo Cameras are regularly fitted with the best lenses obtainable in its particular grade. The Meniscus, Rapid Rectilinear and Planatograph lenses which we regularly use are made for us by the Bausch & Lomb Optical Co., the largest and most completely equipped lens manufacturers in the world. Our Planatograph lens is absolutely the best obtainable outside of the anastigmats. As for anastigmats themselves, the Premo line offers a great variety of cameras suitable for any high grade equipment. See page 33.

We will gladly correspond with any one who has work requiring the superior definition and speed of the anastigmats, and we make a specialty of supplying such equipments for scientific and other special purpose. We list below several lenses in barrel. Manufacturers' prices on any others will be gladly supplied on demand.

ZEISS KODAK ANASTIGMAT LENS *f.* 6. 3

No.	Size of Plate Covered with Full Aperture.	Equivalent Focus.	Price.
1.....	2¼ x 3¼	4½ inches	\$21.50
2.....	3¼ x 4¼	5 inches	22.00
3.....	4 x 5	6½ inches	27.00
5.....	5 x 7	8¼ inches	40.00
6.....	6½ x 8½	10 inches	54.00

B. & L.-ZEISS PROTAR LENS—SERIES V, *f.* 18

The B. & L.-Zeiss Protar, Series V, is designed for extreme wide-angle work. This lens embraces a field of 110 degrees.

No.	Size.	Equivalent Focus.	Price.
1.....	4¼ x 6½	3¾ in.	\$23.00
2.....	5 x 7	4¾ in.	23.00
3.....	6½ x 8½	5⅞ in.	29.00
4.....	8 x 10	7⅞ in.	36.00

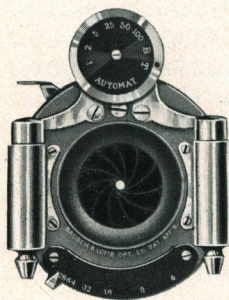
SYMMETRICAL WIDE-ANGLE LENS

While not an anastigmat, this is an excellent wide-angle lens at a moderate price, having an angle of about 80 degrees.

No.	Size.	Equivalent Focus.	Price In Cells Only.
1.....	4 x 5	3½ in.	\$ 5.00
2.....	5 x 7	5 in.	7.50
3.....	6½ x 8½	6½ in.	12.00
4.....	8 x 10	8 in.	15.00

SHUTTERS FOR PREMOS

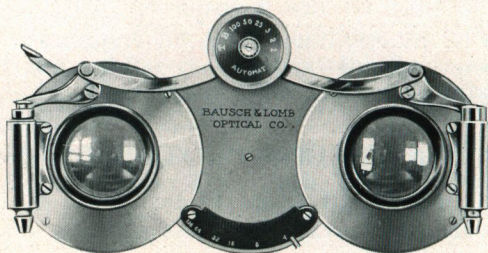
B. & L. AUTOMATIC SHUTTER



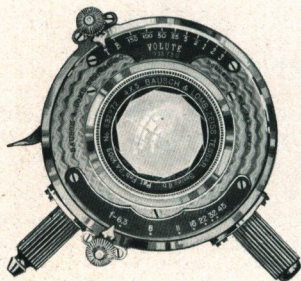
This shutter is perfectly automatic in action, working for time, instantaneous and retarded exposures without previous setting. The Automatic is operated by either bulb attachment or finger release. It is a very compact shutter and for exposures of 1, $\frac{1}{2}$, $\frac{1}{5}$, $\frac{1}{25}$, $\frac{1}{50}$, $\frac{1}{100}$ seconds, works with a constant accuracy hitherto unobtainable. An Iris diaphragm is also supplied and the stops are graduated according to the universal system. This shutter is regularly supplied with the Filmplate Premos and Pony Premos Nos. 3, 4, 6 and 7.

B. & L. STEREO AUTOMATIC SHUTTER

This shutter is in reality a double automatic, made up by a combination of two automatic shutters, both working in unison. It is constructed so as to readily accommodate any desirable Stereo lens. Supplied with all Stereo Premos.



B. & L. VOLUTE SHUTTER



The Volute is the highest type of the diaphragm shutter, and is especially desirable for use with anastigmat lenses. The No. 1 Volute is graduated for speeds from Time to $\frac{1}{150}$ second; the No. 2, from Time to $\frac{1}{100}$, and the No. 3, from Time to $\frac{1}{75}$. It has retarded speeds varying from $\frac{1}{50}$ to 1, 2 and 3 seconds, and may be fitted to any Premo which is adapted for anastigmat lenses.

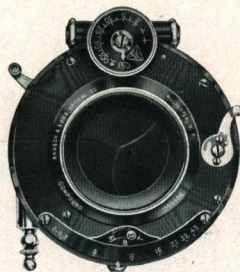
SHUTTERS FOR PREMOS

COMPOUND SHUTTER

THE Compound Shutter is an automatic and setting shutter combined. Automatically, either time or bulb exposures may be made, while the shutter may be set for speeds of from one second to $\frac{1}{250}$ second.

The shutter leaves are formed of segments opening in star shape, giving even illumination over the entire plate the instant the exposure is started, and an iris diaphragm is supplied.

Supplied as a special equipment with Premo cameras that take anastigmat lenses.



SINGLE VALVE AUTOMATIC SHUTTER

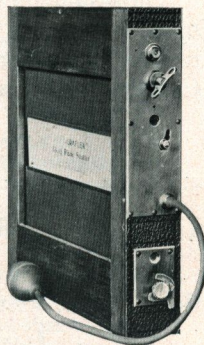


This is a first rate automatic shutter, and while it does not have the retarded speeds of the double valve shutter, it is fully as reliable for Time, Bulb and Instantaneous exposures. Regularly supplied with Premoette Nos. 1 and 1A Special, all Film Premos No. 1, Film Premos No. 3, Pony Premos Nos. 1 and 2, and Pocket Premo C.

GRAFLEX FOCAL PLANE SHUTTER

Any of the reversible back Premos adaptable for anastigmat lenses and all View Cameras up to the 8 x 10 size, become instruments for high speed photography by use of the Graflex Focal Plane shutter.

This is the most convenient and reliable focal plane shutter ever devised. The curtain, instead of being adjustable, is provided with a series of slots of varying widths and the mechanical control is entirely on the right hand side of the shutter. With this shutter, exposures up to $\frac{1}{1250}$ of a second may be obtained, also time exposures of any duration.



4 x 5,	\$22.00	6½ x 8½, . . .	\$27.00
5 x 7,	24.00	8 x 10,	31.00

PREMO ACCESSORIES

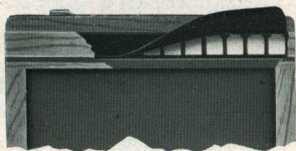
PREMO FILM PACK ADAPTER

Will convert any Premo plate camera into a daylight loading film camera. See description page 6.

$3\frac{1}{4} \times 4\frac{1}{4}$.	.	.	\$1.00	4×5	.	.	.	\$1.50
$3\frac{1}{4} \times 5\frac{1}{2}$.	.	.	1.50	5×7	.	.	.	2.50

PREMO PLATE HOLDER

For twenty years the superiority of the Premo Plate Holders has been conceded. In connection with the convenience of the spring bar device for loading and unloading, an additional improvement is now incorporated in their manufacture which consists of a very flexible and resilient light trap constructed of finely tempered non-corrosive metal with independently operating spring fingers overlaid with a closely woven specially prepared fabric. The fingers bring this fabric into such close and immediate contact with the shutter cover that a slide can be inserted cornerwise without admitting light to the plate.



Premo Holders are always fitted with hard rubber slides.

$3\frac{1}{4} \times 4\frac{1}{4}$.	.	.	\$1.00	5×7	.	.	.	\$1.25
$3\frac{1}{4} \times 5\frac{1}{2}$.	.	.	1.00	$6\frac{1}{2} \times 8\frac{1}{2}$.	.	.	1.75
4×5	.	.	.	1.00	8×10	.	.	.	2.00

UNIVERSAL PLATE HOLDER

These holders up to and including the 8×10 size are manufactured identically the same as Premos, except that they are heavier in construction and made to fit the Empire State and Premo View Cameras. Slides are press board unless otherwise specified.

5×7	.	.	.	\$1.00	11×14	.	.	.	\$4.00
$6\frac{1}{2} \times 8\frac{1}{2}$.	.	.	1.10	14×17	.	.	.	5.00
8×10	.	.	.	1.25					

R. O. C. PLATE HOLDER

This holder is of good construction and is adapted for use in the R. O. C. View Camera only. It has press board slides.

5×7	.	\$1.00	$6\frac{1}{2} \times 8\frac{1}{2}$.	\$1.10	8×10	.	\$1.25
--------------	---	--------	------------------------------------	---	--------	---------------	---	--------

PREMO ACCESSORIES

PREMO FILM PACKS.

Twelve films in each package. See pages 4 and 5.

Size	Price.	Size.	Price.
2¼ x 3¼ . . .	\$.40	3¼ x 5½ . . .	\$.80
2½ x 4¼50	4 x 590
3¼ x 4¼70	5 x 7 . . .	1.60

GLASS DRY PLATES.

We furnish either Seed, Standard or Stanley dry plates at these prices:

Size.	Price per Dozen.	Size.	Price per Dozen.
3¼ x 4¼ . . .	\$.45	5 x 8 . . .	\$1.25
3¼ x 5½65	6½ x 8½ . . .	1.65
4 x 565	8 x 10 . . .	2.40
4¼ x 6½90	10 x 12 . . .	4.20
5 x 7 . . .	1.10	11 x 14 . . .	6.00

VELOX PAPER.

The very best developing paper for amateur use.

Size	SINGLE WEIGHT			DOUBLE WEIGHT		
	Doz.	½ Gross.	Gross.	Doz.	½ Gross.	Gross.
2¼ x 3¼ . . .	\$.15	\$.60	\$1.00	\$.20	\$.75	\$1.25
2½ x 4¼15	.70	1.25	.20	.90	1.55
3½ x 3½15	.80	1.50	.20	1.00	1.90
3¼ x 4¼15	.80	1.50	.20	1.00	1.90
3¼ x 5½15	.80	1.50	.20	1.00	1.90
4 x 525	1.10	2.00	.30	1.40	2.50
4¼ x 6½30	1.65	2.80	.40	2.05	3.50
5 x 735	2.00	3.50	.45	2.50	4.40
Velox Post Cards20	1.10	2.00
Double Post Cards, 3½ x 11 inches				.40	2.20	4.00

CARD MOUNTS.

BEVPLANE

Carbon Black and Scotch Gray.

For Prints	Size	Outside	Per 50	Per 100
2¼ x 3¼	4	x 5	\$.30	\$.60
3¼ x 4¼	5	x 6	.45	.85
3¼ x 5½	4¼	x 7	.45	.90
4 x 5	5½	x 6½	.45	.90
5 x 7	7	x 9	.85	1.70

NAPLES

Queen Gray and Artist's Brown.

For Prints	Size	Outside	Per 50	Per 100
2¼ x 3¼	4	x 5	\$.45	\$.85
3¼ x 4¼	5	x 6	.50	.95
3¼ x 5½	5¼	x 7½	.65	1.25
4 x 5	5½	x 6½	.55	1.05
5 x 7	7	x 9	1.00	1.95

No orders accepted for less than fifty of one kind and size.

PREMO ACCESSORIES



A B C DEVELOPING AND PRINTING OUTFIT

The A B C Developing and Printing Outfit includes every requisite for developing, printing and finishing twenty-four 4 x 5, 2½ x 4½, or 3½ x 4½ pictures. The outfit contains:

1 Kodak Candle Lamp, \$.25; 1 4 x 5 Printing Frame, .25; 1 4 x 5 Glass for Frame, .05; 1 4-ounce Graduate, .10; 1 Stirring Rod, .05; 4 4½ x 5½ Developing Trays, .40; 5 Tubes Eastman's Special Developer, .25; ½ pound Kodak Acid Fixing Powder, .15; ½ ounce Bromide Potassium, .10; 2 dozen 4 x 5 Velox Paper, .50; 2 ounces Nepera Solution, for developing Velox, .15; Instruction Book, .10. These articles if purchased separately would cost \$2.35. Price complete, neatly packed, \$1.50.

PREMO OPTICAL OUTFIT

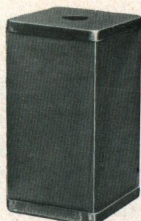
This outfit consists of a set of supplementary lenses, ray filter and duplicator, and is for use with 4 x 5 and 5 x 7 cameras whose lens barrels do not exceed 1 5/16 inches in diameter. These lenses slip over the regular lenses of the camera like a cap. They give the owner of one good objective lens the advantage of five different focal lengths. These combinations will be supplied separately when desired. The lenses are enclosed in a plush lined case, leather covered.

Outfit complete for 4 x 5, diam. of lens 1 5/16"	\$6.00
Outfit complete for 5 x 7, diam. of lens 1 5/8"	6.00
Enlarging and Copying lens	1.25
Wide-Angle lens	1.25
Tele-Photo lens	1.25
Portrait lens	1.25
Ray Filter	1.00
Duplicator	.40



PREMO ACCESSORIES

KODAK CANDLE LAMP

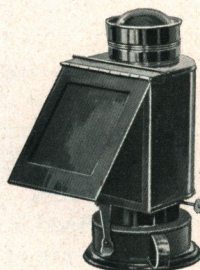


The Kodak Candle Lamp is of folding design and when not in use can be readily carried in the pocket. The top and bottom are made of metal, the sides of special fabric. It accommodates a large candle and illuminates from all sides, giving a strong, safe light for the dark room.

Kodak Candle Lamp	\$.25
Candles, per dozen30

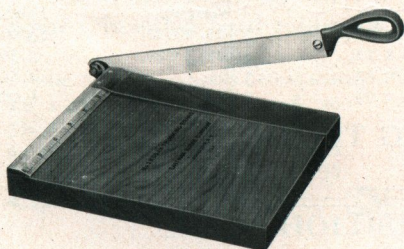
KODAK DARK ROOM LAMP

This is a very popular oil lamp and produces a clear, steady light, perfectly safe and efficient for the dark room. It has a combination orange and ruby glass which may be used singly or together. The broad wick is regulated from the outside and an adjustable shield prevents white light from escaping.



Price,	\$1.00
------------------	--------

KODAK TRIMMING BOARD



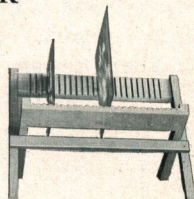
A thoroughly reliable trimming board at a moderate price, constructed of hard wood with natural finish. The blade is of the best steel and a rule is fitted to the board.

No. 1, 4 x 5 in.	\$.40
No. 2, 7 x 7 in.60

PREMO NEGATIVE RACK

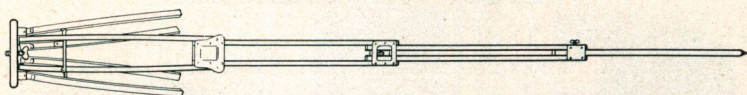
This is a very substantial article made of the best seasoned cherry, accommodating negatives of all sizes. It folds flat when not in use.

No. 1, for 12 negatives	\$.20
No. 2, for 24 negatives25



PREMO ACCESSORIES

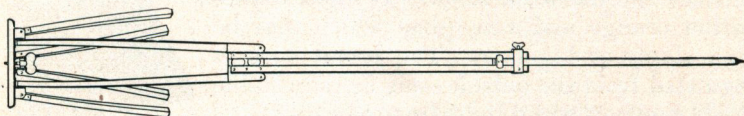
PREMO TRIPOD



The legs of this tripod are constructed in four sections, the first sliding into the second, these two into the third, while the upper section folds back upon the third. The length, when extended, varies according to size from fifty-six to fifty-eight inches; when folded, from sixteen and a half to seventeen and a half inches. Made of ash with Flemish oak finish.

Style.	Size of Camera.	Weight.	Price.
No. 2,	4 x 5 and 5 x 7,	1 lb. 13 ozs.	\$5.00
No. 3,	5 x 7 and 6½ x 8½,	2 lbs. 13 ozs.	6.00
No. 4,	6½ x 8½ and 8 x 10,	4 lbs. 1 oz.	7.00

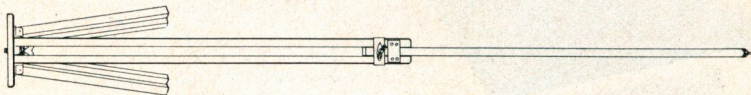
COMBINATION TRIPOD



This tripod is made on the sliding and folding principle. The wood parts are of ash and the finish is of the very best. Length, when extended, varies according to size from fifty-six to fifty-nine inches; folded, from twenty-two to twenty-three inches.

Style.	Size of Camera.	Weight.	Price.
No. 2½,	6½ x 8½ and smaller,	3 lbs. 2 ozs.	\$3.00
No. 3,	8 x 10 and 10 x 12,	4 lbs. 3 ozs.	3.50
No. 4,	11 x 14 and 14 x 17,	5 lbs.	4.50
No. 5,	17 x 20 and 20 x 24,	7 lbs.	6.00

SLIDING TRIPOD

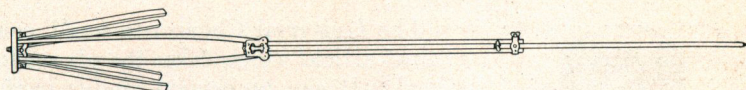


As a rigid tripod none will be found more satisfactory than the Sliding. The legs are made in two sections, producing a very firm support. The top is of wood covered with cloth. The two smaller sizes are made of spruce, the larger of ash. They are well finished and the metal parts are of lacquered brass.

Style.	Size of Camera.	Weight.	Price.
No. 1,	5 x 7 and smaller,	2 lbs.	\$2.00
No. 2,	5 x 8 and 6½ x 8½,	2 lbs. 8 ozs.	2.50
No. 3,	8 x 10 and 10 x 12,	4 lbs. 8 ozs.	3.00
No. 4,	11 x 14 and 14 x 17,	7 lbs. 3 ozs.	4.00

PREMO ACCESSORIES

R. O. C. TRIPOD



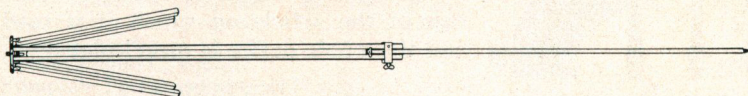
The R. O. C. Tripod is of the combination type. The wood parts are of maple, beautifully finished in natural color. The head is of metal with leather covered wooden top. A very desirable tripod for use with any camera up to and including the 5 x 7 size.

Weight, 32 ounces.

Length, 22 to 57 inches.

Price, \$1.70

RAY SLIDING TRIPOD



Although very light, this is an extremely rigid tripod, and is designed for cameras up to and including the 4 x 5 size.

Weight, 16 ounces.

Length, 29 to 54 inches.

Price, 80 cents.

HOLDER SLIDES

Extra slides for any of our holders will be supplied when desired, in either hard rubber or pressboard, at following prices:

Size	Price		Size	Price	
	Press-board.	Hard Rubber.		Press-board.	Hard Rubber.
3¼ x 4¼	\$.10	\$.20	6½ x 8½	\$.25	\$.50
3¼ x 5½	.15	.25	8 x 10	.35	.65
4 x 5	.15	.25	11 x 14	.50	1.00
5 x 7	.20	.35			

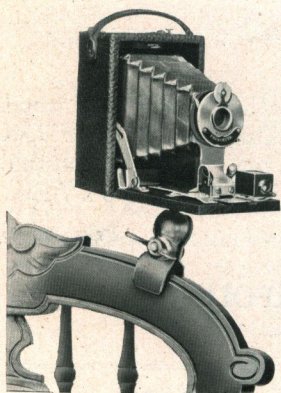
HOLDER KITS

These are intended for holding small plates in large plate holders, and are made of well seasoned material that will not warp.

Size Outside.		Size of Opening for Plate.				Price.
4 x 5	3¼ x 4	3¼ x 4¼				\$.20
5 x 7	3¼ x 5½	3¼ x 4¼	4 x 5	4¼ x 6½		.25
5 x 8		3¼ x 4¼	4 x 5			.25
6½ x 8½	3¼ x 4¼	4 x 5	4¼ x 6½	5 x 7		.30
8 x 10		5 x 7	6½ x 8½			.40
11 x 14		6½ x 8½	8 x 10	10 x 12		.50
14 x 17		10 x 12	11 x 14			.80

PREMO ACCESSORIES

THE UNIVERSAL CLAMP



The Universal Clamp is a small, convenient article which takes the place of a tripod. It can be carried readily in the pocket, is very light, and may be attached to a chair, fence, the front board of an automobile, or other object which may be at hand. The screw of this clamp is made in the Universal pattern, so that it may be used with any modern hand camera.

The clamp jaws are padded with felt, obviating any danger of marring the surface of the article on which it is used; and the whole device is nickel-plated.

Price, 75 cents.

AMATEUR PRINTING FRAME

This frame is light and strong; made of the best seasoned cherry and has reliable spring brass mountings.

Size		Price	Size	Price
3¼ x 4¼	\$.25	4 x 5 \$.25
3¼ x 5½30	5 x 735

PREMO RAY SCREEN



By the use of this screen a more equal exposure can be obtained of sky, clouds and landscape, thus bringing out the detail of subject without losing cloud effect.

Size	Outside Diam.	Diam. of lens	Price
No. 1 . . .	1½ in. . .	1¼ in. . .	\$.40
No. 2 . . .	2 in. . . .	1¾ in. . .	.50
No. 3 . . .	3¼ in. . . .	2⅞ in. . .	.75

DEVELOPING TRAYS

Bulls-Eye Composition, 3½ x 4¼	\$.12	Paper, 5 x 7 \$.15
Bulls-Eye Composition, 4 x 5	.15	Hard Rubber, 4 x 527
Bulls-Eye Composition, 5 x 7	.25	Hard Rubber, 5 x 756
Paper, 4 x 5	.10		

PREMO ACCESSORIES

PREMO CARRYING CASES

The best sole leather is used in the construction of all Premo Cases excepting those for box cameras and for Pony Premo No. 1 and No. 2; these are made of leather covered board. Cases for Pony Premos No. 6 and No. 7 are Velvet Lined and highly ornamented. View Camera Cases as listed are made of canvas, lined with felt, and have space for the camera and several holders.



Cameras	3¼ x 4¼	3¼ x 5½	4 x 5	5 x 7	6½ x 8½
Film Premo No. 1, square	\$1.25	\$1.50	\$1.50	\$2.25	\$
Film Premo No. 3, square	1.25	1.50	1.50		
Premograph No. 2, square	2.50				
Pocket Premo C, square	1.50	1.75			
Filmplate Premo, square	1.75	2.00	2.00	2.50	
Pony Premos 1 and 2, long			1.50	2.00	
Pony Premos 3 and 4, long			4.00	5.00	
Pony Premo No. 6, long			5.00	6.00	8.00
Pony Premo No. 7, long			6.00	8.00	12.00
		2¼ x 3¼	2½ x 4¼	3¼ x 4¼	4 x 5
Premo Junior Cases (imitation leather)		.75	.85	1.10	1.25
Premoette Cases (imitation leather)		.75	.85		
Premoette Special Cases (sole leather)		1.00	1.25		
View Cameras	5 x 7	6½ x 8½	8 x 10	11 x 14	14 x 17
R. O. C. View, square	\$1.75	\$2.00	\$2.25	\$	\$
Empire State, long	2.00	2.25	2.50	3.25	5.00
Empire State No. 2, long	2.00	2.25	2.50		
Premo View, long		4.00	5.00		

BELLOWS

Extra bellows will be supplied for cameras when desired, at following prices:

Cameras	3¼ x 4¼	3¼ x 5½	4 x 5	5 x 7	6½ x 8½
Film Premo No. 1	\$1.50	\$1.75	\$1.75	\$2.50	\$
Film Premo No. 3	1.75	2.00	2.00		
Pocket Premo C	1.75	2.00			
Filmplate Premo	1.75	2.00	2.00	2.50	
Pony Premos Nos. 1, 2, 3 and 4			2.00	2.50	
Pony Premos Nos. 6 and 7			3.00	4.00	5.00
View Cameras	5 x 7	6½ x 8½	8 x 10	11 x 14	14 x 17
R. O. C. View	\$3.00	\$4.00	\$5.00	\$	\$
Empire State	4.00	5.00	6.00	8.00	10.00
Empire State No. 2	4.00	5.00	6.00		
Premo View		7.00	8.00		

MISCELLANEOUS

Bulbs and Tubes	\$0.35	Premo Spirit Level	\$.40
Focusing Cloth, Gossamer50	Reversible Backs :	
Photo Paste, 3 oz. tube15	For View Cameras, 5 x 7 . . .	7.50
Photo Paste, 5 oz. tube25	For View Cameras, 6½ x 8½ . .	9.00
Thermometer50	For View Cameras, 8 x 10 . . .	11.00
Graduate, 4 ounces10	For View Cameras, 11 x 14 . . .	14.00
Graduate, 8 ounces15	Screws for Tripod Head :	
Graduate, 16 ounces20	Nos. 1, 2 and 325
Graduate, 24 ounces25	Nos. 4 and 540
Print Roller, 2 x 6-inch rubber		Screws for Tripod Leg :	
roller, nickeled frame50	Nos. 1, 2 and 315
Flexo Print Roller, 4-inch		Nos. 4 and 525
rubber roller, black enam-		Milled Head Screws for Cameras :	
eled frame,15	½ inch and smaller15
Ground Glass Frames for		Larger than ½ inch25
View Cameras :		Shoulder Straps, Black :	
5 x 775	½ x 52 in. with Snaps and	
6½ x 8½	1.00	Buckles25
8 x 10	1.25	¾ x 52 in. with Snaps and	
Ground Glass :		Buckles30
4 x 515	½ x 66 in. with Buckle30
5 x 720	¾ x 74 in. with Buckle35
6½ x 8½25	Tan Straps for View Cases, with	
8 x 1030	Buckle. Specify Style and	
Lens Boards :		Size of Camera when order-	
For Premos, up to 5 x 735	ing.	
For Premos, larger50	34, 40 and 44 in.25
For Stereo Cameras50	52, 60 and 66 in.30
For View Cameras, up to 8 x 10	.50	Tubing per foot05
For View Cameras, larger70		
Premo View Finder	1.50		

TERMS

Prices as listed in this catalogue are net excepting to dealers.

When ordering, give shipping directions, whether by freight, express or otherwise. If not stated we use our discretion.

All orders for shipment C. O. D. must be accompanied with sufficient remittance to cover transportation both ways.

Mail orders must be accompanied with remittance for full amount of purchase, including postage, or we will ship by express.

Under no circumstances are we responsible for loss of mail packages. We suggest for safety that all such packages be ordered registered.

All goods are carefully packed and we cannot be held responsible for any damage during transit.

Orders for special parts or for goods not listed in this catalogue will be filled on customer's responsibility only. Under no circumstances can we permit the return of such goods for credit.

All prices are F. O. B. at Rochester, N. Y.

ROCHESTER OPTICAL DIVISION,
EASTMAN KODAK CO. ROCHESTER, N. Y.

