

BETTER
PHOTOGRAPHY
The Ensign Way



An ENSIGN MIDGET Photograph

ARMY & NAVY STORES LTD.
PHOTOGRAPHIC DEPARTMENT
VICTORIA, S.W.1



Ensign

HELPS YOU

to BETTER

PHOTOGRAPHY

Like everything else in this world, photography ranges from the very best to the very worst—especially amateur photography where there is always an excuse available! But between these two extremes of good and bad, lies a gulf that separates the casual, unthinking effort and the photograph that was only taken after all the elements in it had been considered and carefully weighed. Life is rather like this—the more you put into it, the more you can take out. It especially applies that way with photography.

The main object of this book is to show you how to apply your interest in photography and what are its essential parts—so that, knowing all this, you can aim at better and better results; gain them through your own knowledge, rather than by pure luck. Then, later in the book, we can show you the means at your disposal—cameras first, then the films and accessories you will (or may) need. The fact that they are all British, from the largest camera-making Factory in the British Empire, is just a point you might bear in mind.

THERE ARE FOUR DISTINCT TYPES OF CAMERA

Over the course of photographic development, the amateur has gained access to four distinct classes of camera.

The Popular Folding Camera such as you will find on the pages dealing with the SELFIX and AUTORANGE, gives you orthodox photography with a camera that will give years of real service and satisfaction.

The Box Camera gives photography in its simplest form and all we need say of a camera such as the ENSIGN E.20 is that it embodies unique features making it a competitor (for all its cheapness) with the more elaborate and advanced types.

The Precision Miniature Camera is a development of the last few years. Small cameras (for the technical reason that the focal length is shorter) enable greater depth in focussing to be obtained—greater “areas of sharp definition” to exist. Then improvements in the grain of films and economies in enlarging costs, all help to perfect the final results. The precision miniature is the camera which every serious amateur should learn something about—The MULTEX, one of the finest precision miniatures made.

The Pure Midget Camera is the latest development in photography and represents an advance during only the last year or so. It raises a subject upon which justice cannot be done here except to say that the Ensign MIDGET fulfils three distinct and unique functions. First it can be carried **always** in the pocket like a watch or a cigarette case, for immediate availability. Then, it is a precision camera with extraordinary capacities. Lastly, you can have it quite distinct from your main camera, using it when that is not with you. It has the qualities of the miniature camera, referred to above.





THE FIRST KEY TO BETTER PHOTOGRAPHY

Always remember that, everything else being equal, results are obtained in accordance with:—

—the size of the lens aperture. This means no more than that the larger this aperture, the greater the amount of light that passes through to the film;

—the quality of the shutter. The better this is, the **slower** the exposures can be. Working downwards to 1/10th of a second, or even slower, you again give your films a better chance.

Talking of Films. There are, of course, special films for special purposes, but, generally speaking, you want to choose one of the best known films and, in working with it, gradually learn to be familiar with it. By this knowledge, a grasp of exposures needed is gradually gained. You are not changing the very foundations of photography, every time, if you settle on one make of film.

Naturally, Ensign Films have a special relationship to Ensign Cameras although they can be used in any camera. They are produced in England—Ortho, Ultrachrome and Fine Grain Panchromatic—and we should like you to try them.

Exposure Methods. These have developed tremendously of late; the photo-electric meter practically eliminating errors and false judgments as to the power of light available. We can recommend the BEWI and the PHOTOSCOP particularly.

In using a meter, calculate on the darker parts of the picture. Leave high lights to take care of themselves. Lengthen exposure for close-ups and shorten it for open scenes.

Lastly, use an exposure meter with intelligence—not as a machine. Having got the fundamental knowledge that it gives you, vary it if you think by doing so you will get a better effect.

THE DIFFERENCE BETWEEN A PHOTOGRAPH AND A PICTURE

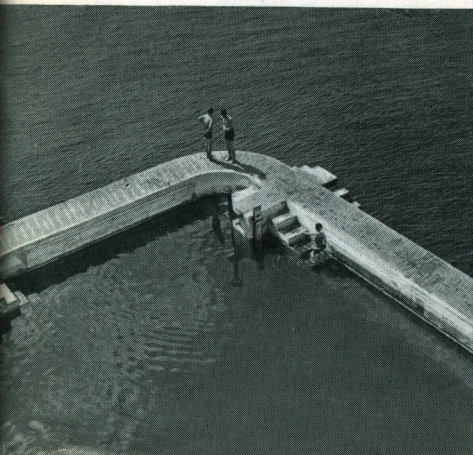
Photography is an art : the camera, to the artist, is what a brush, a palette, a crayon, or a pencil might be. There are soulless, inaccurate paintings and drawings—there are photographs that are just paper exposed before an object. There are paintings which become immortal—there are photographs of innumerable subjects—of drops of water on a piece of linen—of hands in a bowl of soapy water—that hold the imagination, never to be forgotten.

So the second key to good photography—everything else being as good as you can afford—is to compose and balance your picture, having first settled in your own mind, exactly where the emphasis is to be laid : which impression you are really trying to capture and record.

Here comes the essence of the whole subject of photography—the more you put into the creation of a picture—using your tools merely as a means to an end—the more you will get out of it in satisfaction, pleasure, experience, life.

Everything depends on the point of view. The unusual view of an ordinary subject—an ordinary view of an unusual subject, are frequently the most illuminating. Choose then with care, just remembering the subject of **light**. Always study how the light falls upon the subject. Try to keep the sun to left or to right of the camera and use a lens hood when in doubt. "Against the light" pictures, if properly managed, are often most effective. This requires that the exposure length is varied accordingly.

The Use of Colour Filters. This is all bound up with the study of light values and we would recommend any serious amateur giving it special attention. In briefest terms, colour filters ensure correct and relative tone-values to every subject in the picture.



For example, a belt of trees might appear to a camera, all of one tone. Through a colour filter, the variety of tones becomes visible, the brilliance of the general lighting not being allowed to dominate and destroy these delicacies.

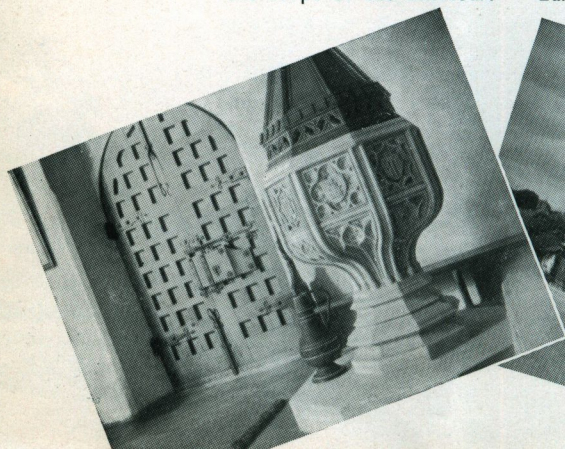
Graduated Sky Filters. These correct the probability of over-exposure in skies, causing the colours to be graduated from the yellows to the clear. By their agency, cloud effects are obtained and the value of these effects for adding depth, quality, interest, to landscapes and even to close-ups, is incalculable.

Outdoor Photography. Landscapes. First remember that **everything** depends upon the choice of view. Search for a picture—then bring your camera to bear upon it. Don't reverse this operation! Again, keep sun to left or to right. If there is no sun, do not be deterred. A mist can help to make a picture; wet streets and puddles are full of lovely lights and reflections.

General views. Take an interest in everything you see. There is a photograph in every human action; in every street; at every corner; in every room, if only you know where to look for it. Seek them as a musician seeks a melody; an artist a colour. Take it for granted that, used rightly, cameras and films are to-day so all-embracing that even the "atmosphere" of a cold, wet street at night, can be captured.

Portraiture. The nearer to nature—the truer the portrait. Keep this principle always in mind and, before taking a picture of a person or an animal, see that no sense of the artificial has crept into it. Think out all the factors before you even produce your camera: study your subject and relate him, or her, to the available light, its angle, the necessary exposure, the lens aperture, the background and how the light is falling upon it. Make your preparations unobtrusively—be ready almost to press the shutter release—then produce the camera and act quickly, before a feeling of what is going to happen conveys itself to the subject.

Indoor Picture Making. The wonderful strides in the technical problems of photography put successful indoor photography well within the scope of the amateur. Large aperture lenses at reasonable





prices, high speed films, good but inexpensive lighting equipment—in a word, the sort of apparatus that Ensign specialize more upon than any other manufacturers in the World—all lie at your disposal. More than this, the miniature form of camera (the MIDGET and MULTEX particularly) are ideal for this work. In result, photography becomes less and less a seasonable pastime dependent upon the whims of the weather.

Speed and Sporting Pictures. Even this sort of work is no longer reserved to the professional. Perfection in range-finding puts correct focussing in your hands, improvements in view-finding make it a simple matter to know **exactly** what the camera will record. Shutter speeds nowadays become more accurate on the cheaper cameras and high speed films complete the equipment. Given all these things, remember to select views that face the direction of movement, or swing the camera along the line of action as you snap.

D EVELOPING AND PRINTING

This section of photography becomes, each year, more simple and efficient. Daylight developing presents no difficulty and involves the worker in no trouble or mess—and in very little expense. Of course, there will always be a lot to say in favour of the real dark-room technique—to see a negative build itself up into that picture you took such care in composing, is a thrill of the first order.

As with developing, so with printing. The whole process nowadays can be carried through without reference to a dark-room if necessary. But here again, the adage rings true—the more you put into your hobby of photography, the more you will get out of it. For this reason alone, you would be wise to take your photography seriously—bear in mind all that has been said here—amplify your grasp of these subjects by further study; buy the very best equipment you can afford—Ensign for preference; design and build your own dark-room; take care and consideration with everything you do. Then you will be on the highroad to success in what can be the most fascinating, satisfying and fulfilling of hobbies—photography—in all its branches.

EXPOSURE TABLE.

The following table gives a rough idea of the exposures and stops for various subjects with most popular fast films (not super speed) from 10 a.m. until 2 p.m. with bright sunshine during May, June and July. For more detailed information, an exposure guide or meter is recommended.

Subject	f/4.5	f/6.3	f/8	f/11	f/16
Open Seascapes and Cloud Studies	1/800	1/400	1/200	1/100	1/50
Open Landscapes with Light Foreground. Beach Scenes ...	1/400	1/200	1/100	1/50	1/25
Average Landscapes with Objects in Foreground, Figures in open, River Scenes ...	1/200	1/100	1/50	1/25	1/10
Heavy Foreground, Buildings or Trees occupying greater portion of picture	1/100	1/50	1/25	1/10	1/5
Portraits or Groups taken out of doors, not too shut in by buildings	1/50	1/25	1/10	1/5	1/2
Portraits in well-lighted room, light surroundings, big window, white reflector ...	1/25	1/10	1/5	1/2	1

In weather other than bright sunshine, the above exposures are multiplied as follows:—

Bright diffused light, the sun behind a cloud	× 1½
Light clouds over the whole sky, but light able to cast a visible shadow	× 2
Heavy clouds over the whole sky	× 3
Very dull. Whole sky covered heavy clouds	× 4

Note—Bear in mind that modern roll films, while of greater speed, also resist the effect of over-exposure. When in doubt, a longer exposure should therefore be given.

H. & D. and SCHEINER EMULSION SPEEDS.

The following is an approximate comparative guide.

H. & D.	240	500	800	1300	2700	3500	4400	5600
Scheiner	16	19	21	23	26	27	28	29

DEPTH OF FOCUS TABLE.

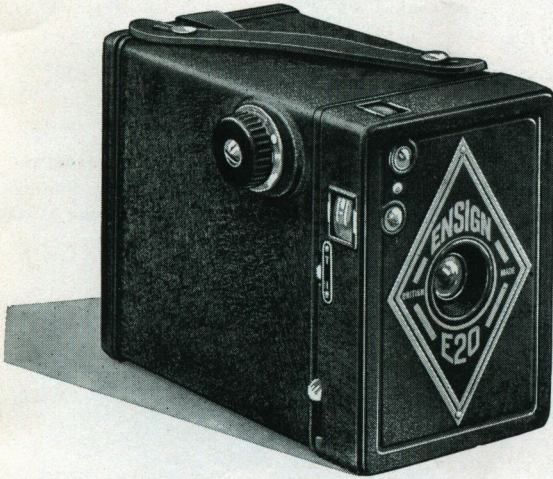
The following tables show the distances in feet between which objects will be sharp when the camera is focussed on various distances.

Focus Set at	f/4.5		f/5.6		f/8		f/11		f/16	
	Near	Far	Near	Far	Near	Far	Near	Far	Near	Far
INF.	ft. in.	ft. in.	ft. in.	ft. in.	ft. in.	ft. in.	ft. in.	ft. in.	ft. in.	ft. in.
35 ft.	54-0	INF.	43-0	INF.	30-0	INF.	22-0	INF.	15-0	INF.
15 ft.	21-0	99-0	19-0	180-0	16-3	INF.	13-6	INF.	10-7	INF.
10 ft.	11-9	20-0	11-0	22-0	10-0	29-0	9-0	46-0	7-6	INF.
7 ft.	8-6	12-3	8-3	13-0	7-6	14-9	7-0	18-0	6-0	28-0
5 ft.	6-3	8-0	6-0	8-4	5-9	9-0	5-4	10-0	4-9	12-9
4 ft.	4-7	5-6	4-6	5-7	4-4	6-0	4-1	6-5	3-10	7-4
3 ft.	3-9	4-4	3-8	4-5	3-6	4-7	3-4	4-10	3-2	5-4
3 ft.	2-10	3-2	2-11	3-2	2-9	3-4	2-8	3-5	2-6	3-7

ENSIGN - E 20

FOR 8 PICTURES $2\frac{1}{4} \times 3\frac{1}{8}$ in. (6×9 cm.)
OR 16 PICTURES $2\frac{1}{4} \times 1\frac{5}{8}$ in. (6×4.5 cm.)
ON STANDARD SIZE 20 FILM

A REMARKABLE NEW BOX CAMERA WITH DOUBLE EXPOSURE
PREVENTION DEVICE



BODY. Made throughout of metal, handsomely finished in black ripple enamel and fitted with a strong leather carrying handle. The back is hinged and is provided with two red windows and pressure plate.

TWO PICTURE SIZES. The film mask for the $2\frac{1}{4} \times 1\frac{5}{8}$ in. size picture is housed in the front of the cone and the inconvenience of having to carry it in

the pocket is therefore overcome. The view finder frames are outlined to show clearly the amount of picture included when the smaller size is being used. **DOUBLE EXPOSURE PREVENTION DEVICE AND SHUTTER.** The shutter is provided with "Time" and "Instantaneous" movement and the exposing lever is coupled to the winding knob so that a second exposure on the same film cannot be made until the film winder has been turned.

VIEW FINDERS. The vertical and horizontal view finders are of the "Brilliant" type and give an exceedingly clear picture.

LENS. The lens is the famous Ensign All-Distance in fixed mount and takes pictures at any distance from 6 ft. upwards without portrait attachment.

PRICE ... 8/6

CASES. Mohair dark brown 3/-; Tan Mail 3/-. Tripod Attachment 2/-

ENSIGN ALL-DISTANCE-20 No. 2

FOR PICTURES $2\frac{1}{4} \times 3\frac{1}{8}$ in. (6×9 cm.).

WITH "BUILT-IN" COLOUR FILTER and All-Distance Lens. A real de-luxe box camera, for quality pictures.

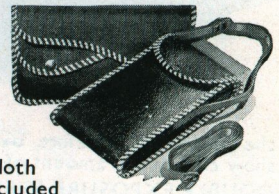
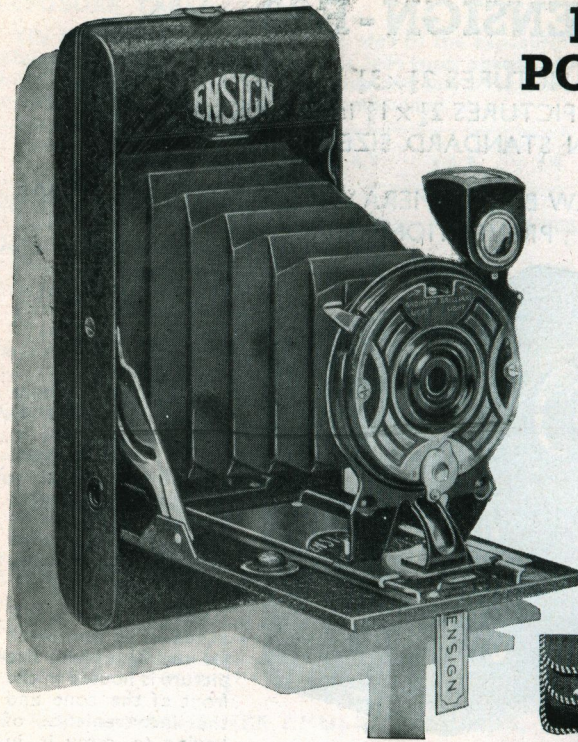
PRICE ... 15/-

CASES. Mohair dark brown 3/-; Tan Mail 3/-. Tripod Attachment 2/-

ENSIGN POCKET-20

FOR
PICTURES
 $2\frac{1}{4} \times 3\frac{1}{4}$ in.
(6×9 cm.)

A very substantially built folding camera of practical and efficient design



Leathercloth
Case is included

No. 1.

BODY: All metal, finished black ripple enamel strong folding baseboard with full length hinge. Patent silent frictionless film-winding device.

LENS: Special rapid meniscus with two stops for bright and brilliant light. There is no focussing, all distances being provided for by two positions of the lens.

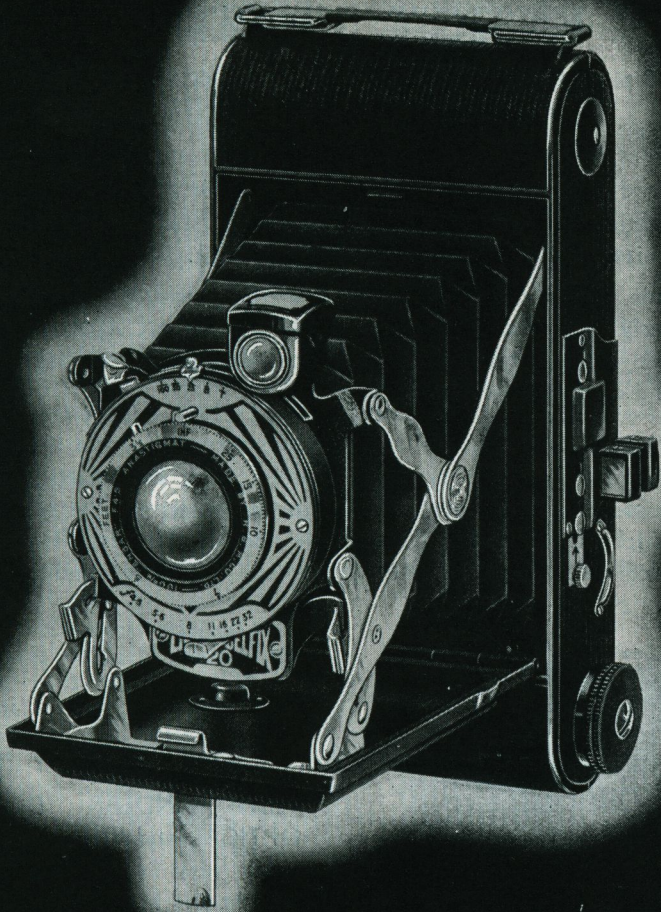
SHUTTER: Gives time, bulb and instantaneous speeds, everset and smooth in action.

VIEW FINDER: Gives brilliant image and is reversible for upright or horizontal positions.

No. 2.

As No. 1 but fitted with ENSAR Anastigmat f/8.5 in Trichro 3-speed shutter.

No. 1	RAPID MENISCUS LENS	£1 7 6
No. 2	ENSAR ANASTIGMAT f/8.5	1 17 6



ENSIGN
SELFIX

ENSIGN SELFIX-20

For 8 pictures $2\frac{1}{4} \times 3\frac{1}{4}$ in. (6×9 cm.) or 16 pictures $2\frac{1}{4} \times 1\frac{1}{8}$ in. (4.5×6 cm.)—on standard size 20 film.

In standard type cameras Selfix, illustrated on the preceding page, stands supreme and is one of the smallest folding cameras made, giving the full size picture on the standard $2\frac{1}{4} \times 3\frac{1}{4}$ in. size 20 film.

It is made throughout of light metal which, however, owing to the particularly ingenious design, is exceedingly strong. All models are now fitted with a film registering device, operated by the sight hole cover, and optical direct view finder.

BODY (Models S/1, S/2, S/3): Covered externally with a handsome and exceedingly durable synthetic leather, have beaded edges, well rounded corners, and neat carrying handle. Open at the side as a book, which makes loading particularly simple. Models S/4 and S/5 are covered with best quality Persian leather—full grained and specially selected.



ENCLOSED OPTICAL FINDER

VIEW FINDERS, DIRECT OPTICAL and REFLEX: The reflex view finder reverses for upright and horizontal pictures and the camera can be closed with the finder in either position. The direct vision optical finder gives an exceptionally brilliant and well defined image and is for use at eye level.

ENSGN SELFIX-20

ERECTING MECHANISM AND BELLOWS: The particularly rigid self-erecting mechanism is well triangulated with side suspension points, giving ample support to the lens panel, which is rigidly held above and below the lens axis. The specially designed bellows will stand up to the rapid erecting action without distress, and a generous number of folds obviates undue pull. A unique air venting system eliminates bellows suction and ensures the folds returning to their correct formation when the camera is closed.

LENSES

The ENSAR f/7.7, f/6.3 and f/4.5 lenses give first-class definition and covering power. Focussing is carried out by revolving the front lens cell. Clear, well-spaced distances are marked down to $3\frac{1}{2}$ ft.

ROSS XPRES and ZEISS TESSAR Lenses in Compur Shutters are also available.

SHUTTERS

TRICHRO: All metal everset Trichro shutters, giving range of 3 speeds, 1/25, 1/50, 1/100 sec., also T. and B.

MULCHRO (Everset): Having a full range of mechanically governed speeds, 1 sec., $\frac{1}{2}$, 1/5, 1/10, 1/25, 1/50, 1/100, T. and B.

PRONTOR (with delayed action):

Requires to be set before exposure.

Type I. is speeded 1/25, 1/50, 1/100, 1/125, T. and B. Type II. 1 sec., $\frac{1}{2}$, 1/5, 1/10, 1/25, 1/50, 1/100, 1/150, T. and B.

COMPUR (with delayed action):

Having range of speeds from 1 sec., $\frac{1}{2}$, 1/5, 1/10, 1/25, 1/50, 1/100, 1/250, T. and B.

SIZE OF CAMERA

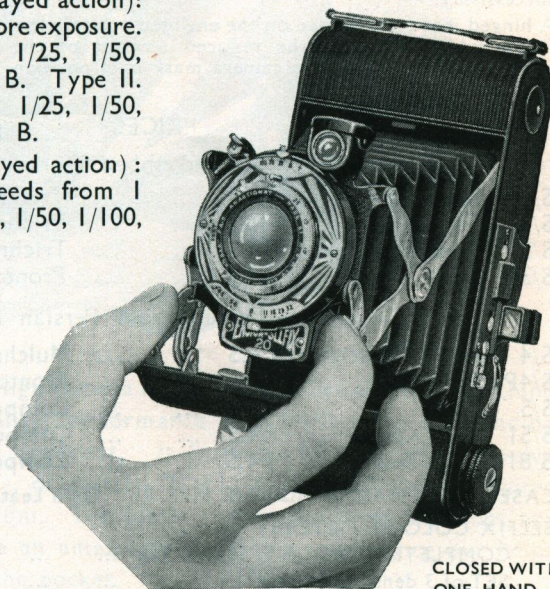
$5\frac{3}{8} \times 3 \times 1\frac{3}{8}$ inches.

SIZE OF PICTURE

8— $2\frac{1}{4} \times 3\frac{1}{4}$ in.

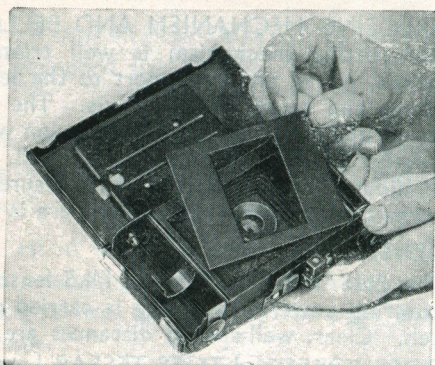
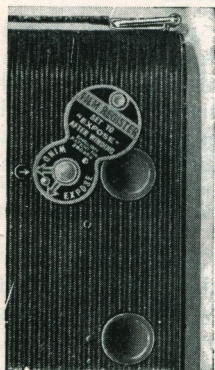
(6 × 9 cm.) or 16—

$2\frac{1}{4} \times 1\frac{5}{8}$ in. (6 × 4.5 cm.).



CLOSED WITH ONE HAND

ENSIGN SELFIX-20



THE TWO SIZES OF PICTURE

CAMERA MASK

By means of a detachable mask placed in the back of the camera, 16 half-size pictures may be made on the standard size 20 spool.

Two windows with sight hole covers are provided—the film being exposed with each number at each window successively.

A hinged mask is provided on the enclosed optical view finder which indicates the reduced amount of the subject included when the camera mask is in position for the smaller size.



PRICES

Covered with selected ribbed Synthetic Leather.

S/1	Ensar Anastigmat	f/7.7	Trichro-shutter	£2 5 0
S/2	Ensar	„ f/6.3	Trichro „	2 15 0
S/3	Ensar	„ f/4.5	Trichro „	3 15 0
S/3P	Ensar	„ f/4.5	Prontor I. „	4 10 0

Covered with full grain Persian Leather.

S/4	Ensar Anastigmat	f/4.5	Mulchro shutter	4 15 0
S/4P	Ensar	„ f/4.5	Prontor II „	5 15 0
S/5	Ensar	„ f/4.5	Compur „	6 15 0
S/5I	Ross Xpres	„ f/4.5	Compur „	10 10 0
S/8I	Zeiss Tessar	„ f/4.5	Compur „	10 10 0

CASES—TAN MAIL or MOHAIR SILK 3/-; Solid Leather 5/6; Ditto lined 7/6

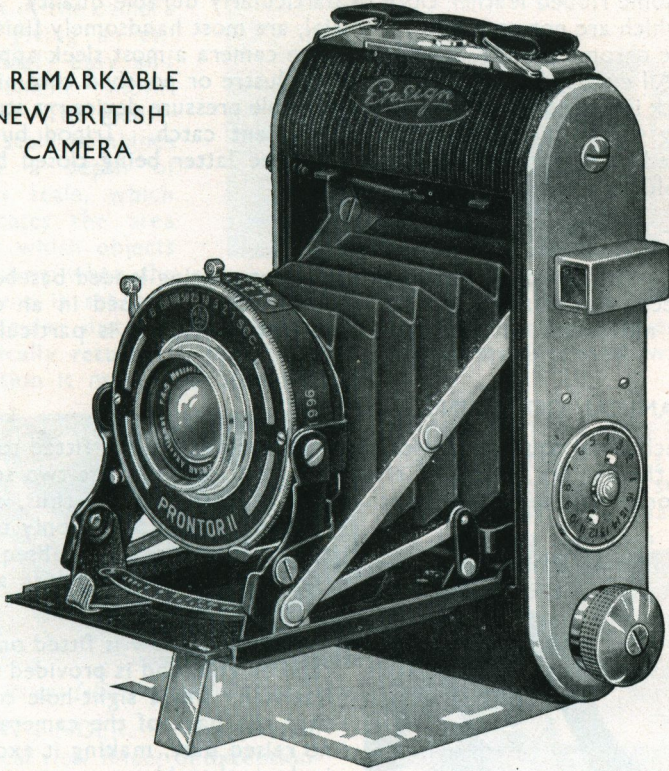
SELFIX COLOUR FILTERS—

COMPLETE IN MOUNT, 2x, 3x, 4x	6/6
SET OF 3 densities in case	14/6

ENSIGN SELFIX - 220

FOR 12 PICTURES $2\frac{1}{4} \times 2\frac{1}{4}$ in. (6×6 cm.)
or 16 PICTURES $2\frac{1}{4} \times 1\frac{5}{8}$ in. (6×4.5 cm.)
ON STANDARD SIZE 20 FILM

A REMARKABLE
NEW BRITISH
CAMERA



This beautiful new Ensign camera made in Great Britain leaves nothing to be desired in quality, performance and finish. Its outstanding value is immediately apparent. It is made to take either twelve $2\frac{1}{4} \times 2\frac{1}{4}$ in. (6×6 cm.), or sixteen $2\frac{1}{4} \times 1\frac{5}{8}$ in. (6×4.5 cm.), pictures on standard size 20 film. The lustre chrome finish to the sides not only gives the camera an amazingly handsome appearance but helps it to slip easily into the pocket.

ENSIGN SELFIX - 220

GENERAL CONSTRUCTION

BODY

The camera is made throughout in metal, the body being covered in a handsome ribbed leather cloth of particularly durable quality. The sides, which are not covered in material, are most handsomely finished in lustre chrome plating, which gives the camera a most sleek appearance. All external parts are finished in lustre or polished chromium. The back is hinged and is fitted with suitable pressure device; a strong carrying handle and exceedingly convenient catch. Tripod bushes are fitted on the body and baseboard, the latter being closed by a screw plug when not in use.

FRONT

The self-erecting front is mounted on a strong spring-loaded baseboard and erects immediately the baseboard catch is released in an even flowing movement without shock. In this position it is particularly rigid.

MECHANICAL COUNTING

The mechanical counting device of quite unique design is fitted to the side of the camera and is for either 12 or 16 pictures, the two scales being completely separate on each side of a reversible plate, thus, when loaded, the film needs only to be turned to No. 1, subsequent counting being recorded automatically on the scale.



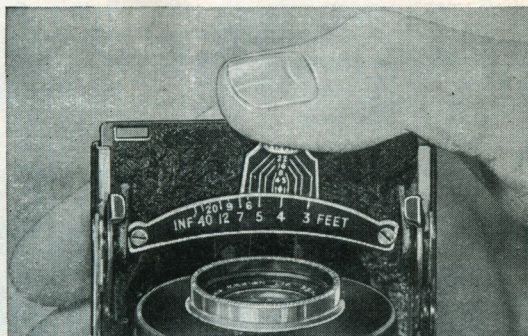
The ruby window is fitted on the tapered end, and is provided with internally fitted sight-hole cover, thus the back of the camera has no raised part, making it exceedingly pocketable.

Mechanical counter reversible scale plate for 12 or 16 pictures—sight-hole conveniently placed out of the way in the tapered end.

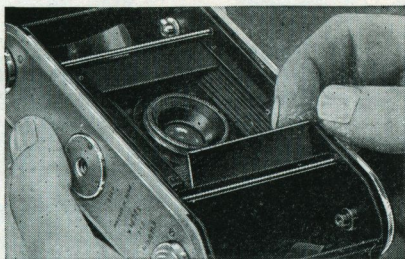
ENSIGN SELFIX - 220

COMBINED FOCUSING AND DEPTH OF FOCUS SCALE.

Focussing is carried out by a radial lever operating on the front of the camera and giving an exceedingly easy and convenient movement. The focussing scale combines with a depth of focus scale, which indicates the area over which objects are sharp when the camera is set any particular distance and lens aperture. The focussing lever automatically returns to infinity when the camera is closed, whatever position it may have been left in.



Combined focussing lever and depth of focus scale.

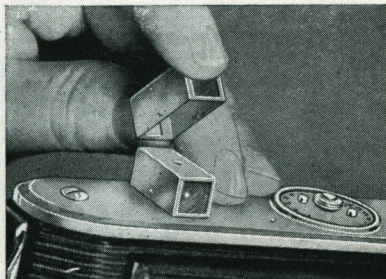


Patent folding masks for $2\frac{1}{4} \times 1\frac{5}{8}$ size.

VIEW FINDER. A direct vision optical view finder of exceptionally high quality is fitted conveniently to the side of the camera. It is provided with a detachable top which is reversible and thus provides masks for both sizes.

View finder with detachable reversible top for two sizes.

TWO PICTURE SIZES. The Selfix-220 takes $12\frac{1}{4} \times 2\frac{1}{4}$ or $16\frac{2}{4} \times 1\frac{5}{8}$ pictures on standard size 20 films. The smaller size is obtained by two folding masks pivoted at each end of the film rollers and mounted inside the camera, a great improvement on the supplementary masks hitherto used.



ENSIGN SELFIX - 220

LENSES. Ensign Ensar f/7.7, f/6.3 or f/4.5 lenses, Ensign Multar f/3.5 and Zeiss Tessar f/4.5, all being of 3-in. focus.

SHUTTERS. Trichro, Prontor I, Prontor II, or Compur shutters.

S/220/1	Ensar Anastigmat f/7.7	Trichro Shutter	£2 15 0
S/220/2	Ensar	f/6.3 Trichro	3 5 0
S/220/3	Ensar	f/4.5 Trichro	3 15 0
S/220/3P	Ensar	f/4.5 Prontor I	4 15 0
S/220/4P	Ensar	f/4.5 Prontor II	5 15 0
S/220/5	Ensar	f/4.5 Compur	6 15 0
S/220/8	Multar	f/3.5 Compur	7 15 0
S/220/8I	Zeiss Tessar	f/4.5 Compur	9 15 0

Ensign Selfix Accessories

LEATHER CASES

"A" quality have safe fastener and shoulder strap. Available in black or brown. "B" quality are velvet lined, have shoulder strap, lock and key. In brown only.

		"A" quality		"B" quality	
For Ensign Selfix-20	...	No. 29	5/6	No. 33	7/6
For Ensign Selfix-220	...	No. 28	5/6	No. 32	7/6

TAN MAIL AND MOHAIR SILK CASES

With leather sling strap.

		Tan Mail		Mohair Silk	
For Selfix-20	...	No. 114	3/-	No. 503A	3/-
For Selfix-220	...	No. 115	3/-		

ENSIGN SELFIX COLOUR FILTERS

Designed specially for use with Ensign Selfix cameras. The filter is easily inserted into the slot at the top of the holder, and is firmly held in place by a stout spring grip. It can be as easily removed. Strongly made and suitable for all types of Ensign Colour Filters. (1¼ in. diameter.)

Supplied complete with Green Filter 2X, 3X or 4X, in limp case.

FOR ENSIGN SELFIX-20.

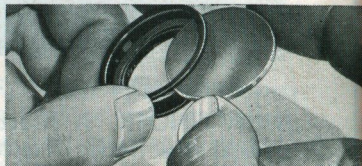
Type 20 (to fit 34.5 mm. diameter lens mount).	
Holder with single filter, in limp case	6/6
Holder with set of 3 filters, in leather case	14/6

FOR ENSIGN SELFIX-220.

Type 220 (to fit 28.5 mm. diameter lens mount).	
Holder with single filter, in limp case	6/6
Holder with set of 3 filters, in leather case	14/6

For other Filters to fit Selfix Holder see page 33.

(1¼ in. diameter.)



PORTRAIT ATTACHMENT

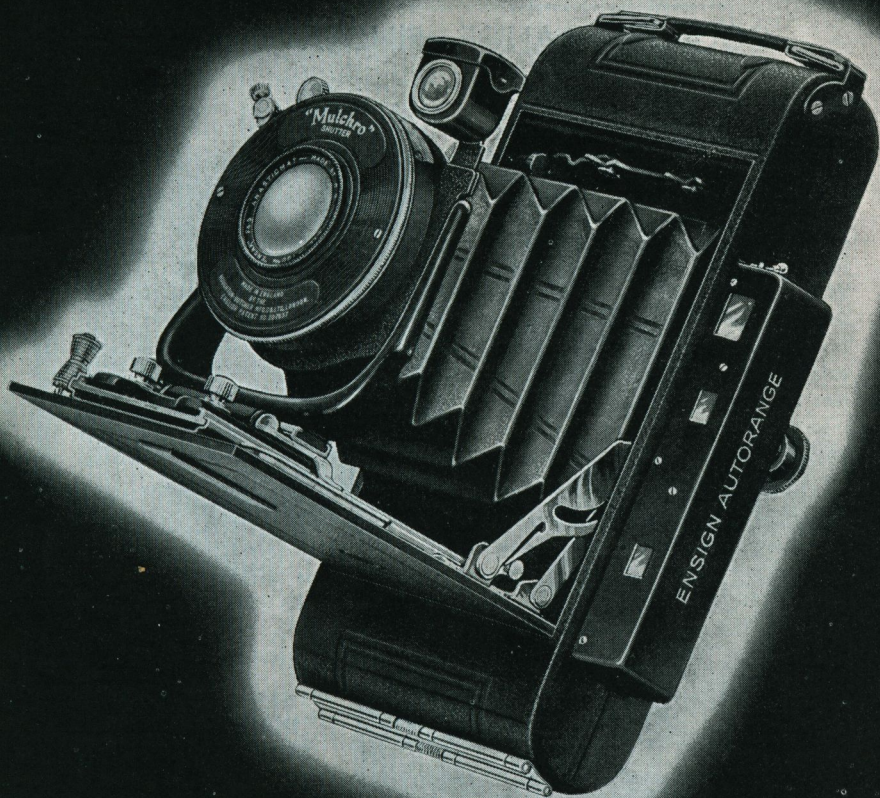
Supplementary lens in Selfix Interchangeable Holder described above. For all models with Ensar lenses. Suitable for portraits from 2 to 3 feet.

Type 20. For Ensign Selfix-20	...	6/6
Type 220. For Ensign Selfix-220	...	6/6

"SHADIT" SPRING LENS HOOD

This all-metal lens hood grips the front cell firmly and enables good clear pictures to be taken even against the light. Will take standard filter mounts.

1⅜ in. dia. For Ensign Selfix-20	...	2/-
1⅜ in. dia. For Ensign-Selfix-220	...	2/-



ENSIGN AUTORANGE

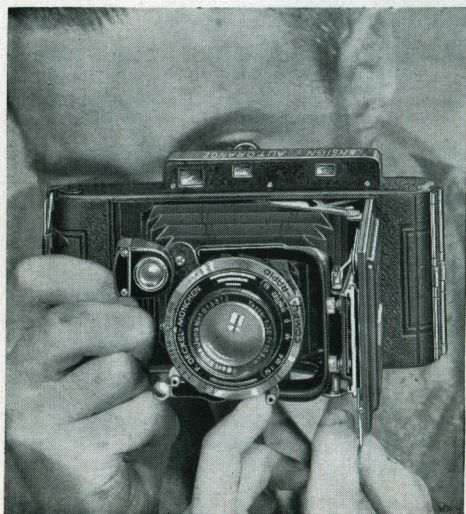
ENSIGN AUTORANGE-20

COUPLED RANGE - FINDER CAMERA

For 8 pictures $2\frac{1}{4} \times 3\frac{1}{4}$ in. (6×9 cm.)
or 16 pictures $2\frac{1}{4} \times 1\frac{5}{8}$ in. (6×4.5
cm.) on standard size 20 film.

The ENSIGN AUTORANGE Camera focusses the image absolutely, sharply and automatically. When sighted on the object, the focussing lever is moved until two images seen in the range finder coincide (see illustration). The lens is thus automatically brought into exact focus for any object at any distance from the camera.

The eye-piece is also adjustable for variations in eyesight, and can be set with absolute precision for any sight.



SIMULTANEOUS FOCUSING AND SHUTTER RELEASE

The new Autorange camera is fitted with a specially designed focussing knob which fits snugly between the thumb and forefinger and at the same time allows the second finger to locate itself correctly on the shutter release lever. Thus the exposure is made at the exact moment coincidence of the two images is secured in the range finder.

ENSIGN AUTORANGE-20



THE
TWO
PICTURE
SIZES



The Autorange camera is now fitted with masks to give 16 pictures size $2\frac{1}{4} \times 1\frac{5}{8}$ (half the standard size, $3\frac{1}{4} \times 2\frac{1}{4}$) on the usual Size 20 film.

A detachable mask is fitted in the back frame and two windows are provided in the back, an exposure being made with each number in each window.

The view finder is fitted internally with a mask operated by a lever, which reduces the amount of picture seen to the correct proportions when the smaller size is being used.

SPECIFICATION

BODY: All metal with double-hinged back for easy loading. Covered with best quality fine grain leather. Two tripod bushes and hinged foot. Special flat safety closing catch.

FILM REGISTERING DEVICE ensures absolute flatness of the film, so essential when large aperture lenses are being used.

LOADING: Films being carried on hinged pins, loading is exceptionally simple.

BELLOWS are made of specially selected leather, linen lined.

ENSIGN AUTORANGE-20

RADIAL FOCUSING : Quick action, very easy in operation and allowing focussing to within 4 ft. A specially designed knob enables the focussing lever to be operated right up to the moment of release. Thus by using the range finder as a view finder exposure may be made at the instant exact focus is secured.

RISING AND CROSS FRONT is worked by a screw. Operates as a rising front for landscape pictures. **RISING FRONT** operated by lever.

VIEW FINDERS. Brilliant reflex fitted to front, reversible for upright and horizontal pictures, and all enclosed optical direct type built into range finder casing (not in focal-plane model), and incorporating two on mask operated from outside by a lever.

SHUTTERS

The following choice of shutters is available:—

MULCHRO (self setting) : Speeds, 1 sec., $\frac{1}{2}$, 1/5, 1/10, 1/25, 1/50, 1/100. Time and bulb.

PRONTOR II (delayed action) : Speeds, 1 sec., $\frac{1}{2}$, 1/5, 1/10, 1/25, 1/50, 1/100, 1/150. Time and bulb.

COMPUR (delayed action) : Speeds, 1 sec., $\frac{1}{2}$, 1/5, 1/10, 1/25, 1/50, 1/100, 1/250 Time and bulb.

COMPUR RAPID (delayed action). As above but with 1/200 and 1/400 sec. instead of 1/250.

PRICES

AR/20	Ensar Anastigmat	f/4.5	Trichro shutter	£7 10 0
AR/21	Ensar	„	f/4.5 Mulchro	„	8 10 0
AR/21P	Ensar	„	f/4.5 Prontor II	„	9 10 0
						Compur	Compur Rapid
AR/22	Ensar	„	f/4.5	£10 10 0	£11 12 6
AR/51	Ross Xpres	„	f/4.5	14 7 6	15 10 0
AR/81	Zeiss Tessar	„	f/4.5	13 10 0	14 12 6
AR/82	Zeiss Tessar	„	f/3.8	—	19 15 0

Finest hide case, velvet lined, lock and key (brown only), No. 15 ... 12/6

“FOCAL-PLANE SHUTTER” MODEL

This model is fitted with a focal-plane type of shutter giving a range of speeds of 1/15, 1/25, 1/50, 1/75, 1/100, 1/150, 1/250, 1/500 sec., also Time. Being coupled to the film winding mechanism the shutter is set and the film wound at one and the same time, thus double exposures are impossible.

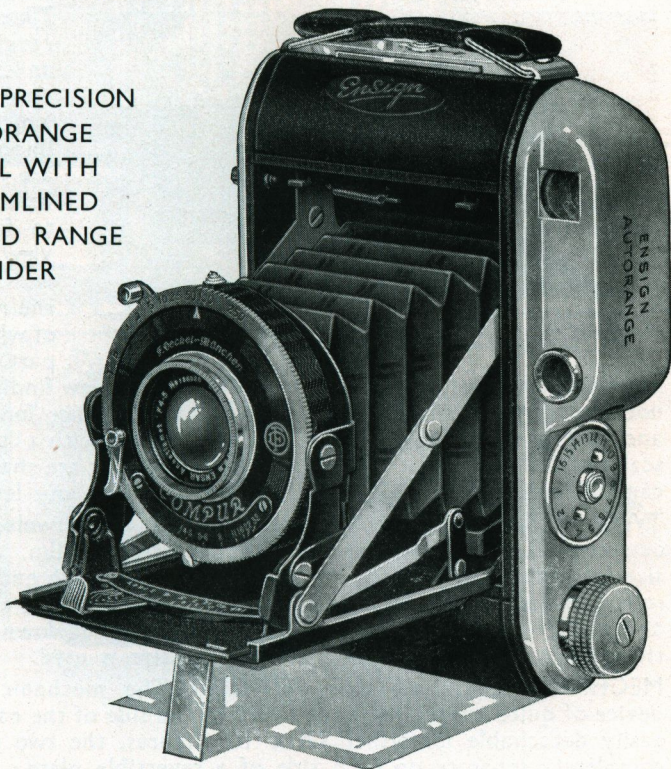
FP/20	Ensar Anastigmat	f/4.5	£8 15 0
FP/10	Aldis Uno Anastigmat	f/4.5	10 10 0
FP/15	Aldis-Butcher	„	...	f/3.4	12 15 0
FP/51	Ross Xpres	„	...	f/4.5	15 10 0
FP/81	Zeiss Tessar	„	...	f/4.5	15 15 0

Solid Leather Case, velvet lined, with lock and key ... 15/6

ENSIGN AUTORANGE - 220

FOR 12 PICTURES $2\frac{1}{4} \times 2\frac{1}{4}$ in. (6×9 cm.)
or 16 PICTURES $2\frac{1}{4} \times 1\frac{5}{8}$ in. (6×4.5 cm.)
ON STANDARD SIZE 20 FILM

A NEW PRECISION
AUTORANGE
MODEL WITH
STREAMLINED
COUPLED RANGE
FINDER



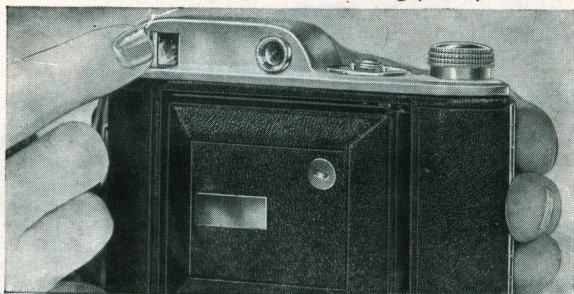
The Ensign Autorange-220 whilst embodying the beauty of design and remarkably practical features of the Selfix-220 has the great advantage of a coupled range finder operating in conjunction with the lens. The range finder in which the view finder is also combined is housed in the side of the camera which is streamlined to give maximum compactness and portability.

The camera is made throughout in metal, the body being covered in a handsome fine grain Persian leather. The sides, which are not covered in material, are most handsomely finished in lustre chrome plating, which gives the camera a most sleek appearance. The ruby window is fitted on the tapered end and is provided with a sight-hole cover; thus the back of the camera has no raised part, making it exceedingly pocketable.

ENSIGN AUTORANGE - 220

COUPLED RANGE FINDER FOCUSING

Focussing is carried out by a radial lever operating on the front of the camera and giving an exceedingly easy and convenient movement.



The combined view finder and coupled range finder housed in the streamlined side of the camera. The view finder masking frame for the smaller size slides across the opening on the inside.

The coupled range finder gives an exceptionally clear view, in which the super-imposing images are very clearly defined and easy to follow. The view finder itself is housed inside the range finder of which it forms part, and the

same eyepiece is used both for range finding and view finding, thus it is not necessary to remove the eye from one to the other for "focussing" and "taking." The focussing scale is combined with a depth of focus scale, which indicates the area over which objects are sharp when the camera is set at any particular distance and for any lens aperture.

TWO PICTURE SIZES. The Autorange-220 takes twelve $2\frac{1}{4} \times 2\frac{1}{4}$ in. or sixteen $2\frac{1}{4} \times 1\frac{5}{8}$ in. pictures on standard size 20 film. The smaller size is obtained by two folding masks pivoted at each end of the film rollers and mounted inside the camera. A sliding mask as illustrated above is fitted inside the view finder housing to cut down the view to the correct proportions when the smaller size is used.

MECHANICAL COUNTING DEVICE. The mechanical counting device of quite unique design is fitted to the side of the camera and is easily detachable for either 12 or 16 pictures, the two scales being completely separate on each side of a reversible plate; thus, when loaded, the film needs only to be turned to No. 1, subsequent counting being recorded automatically on the scale.

PRICES

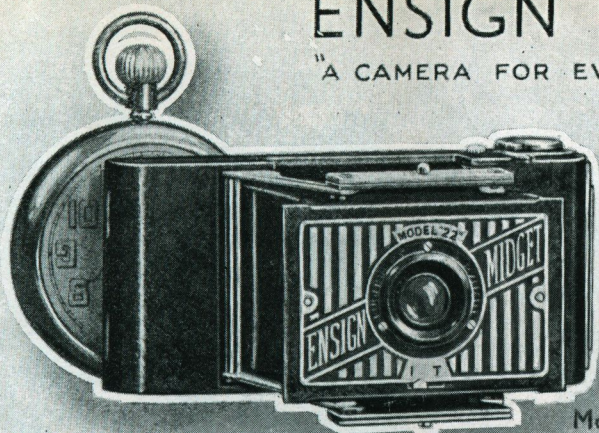
A/220/3P	Ensar Anastigmat	f/4.5	Prontor I	Shutter	...	£7 10 0
A/220/4P	Ensar	..	f/4.5	Prontor II	..	8 10 0
A/220/5	Ensar	..	f/4.5	Compur	..	9 10 0
A/220/8	Multar	..	f/3.5	Compur Rapid	Shutter	12 10 0
A/220/8I	Zeiss Tessar	f/4.5	Compur	12 10 0
A/220/84	Zeiss Tessar	f/2.8	Compur Rapid	17 10 0

Leather Case, velvet lined 12/6. Colour Filter, 2X, 3X or 4X, in holder, with limp case 6/6
Holder with set of 3 Filters, in leather case 14/6

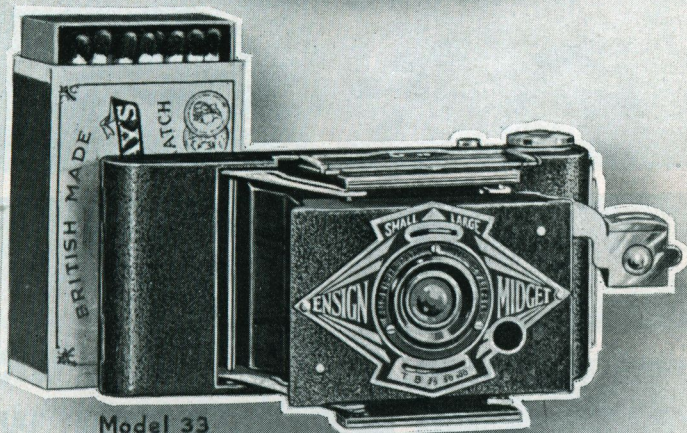
Delivery, June.

ENSIGN MIDGET

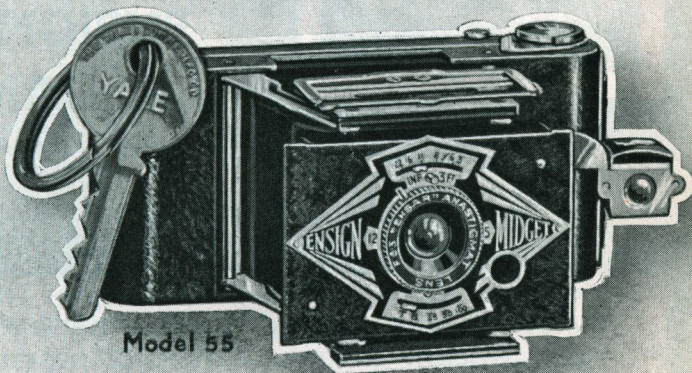
"A CAMERA FOR EVERYDAY WEAR"



Model 22



Model 33



Model 55



**PICTURE
TAKEN WITH
AN
ENSIGN MIDGET
CAMERA**



A GENUINE POCKET CAMERA—SMALL ENOUGH TO BE CARRIED UNNOTICED ALWAYS—STRONG ENOUGH TO STAND UP TO HARD WORK—EFFICIENT ENOUGH TO PRODUCE NEGATIVES CAPABLE OF ENLARGEMENT TO 15×12 INCHES OR LARGER.

ENSIGN MIDGET

For pictures $1\frac{5}{8} \times 1\frac{1}{4}$ in. (3×4 cm.)

SPECIFICATION

MODEL 22

For pictures at all distances down to 4 ft., mounted in a self-setting shutter giving Time and Instantaneous speeds. Handsomely finished in black silk ripple enamel. Easy opening front, very rigid in its extended position. Close fitting back easily removed, and secured by a safety catch. Collapsible eye-level view finder. Easy loading with hinged spool covers to prevent edge fog. Weight $5\frac{1}{2}$ ozs.

MODEL 33

Gives wonderful depth of focus and enables sharp pictures to be secured without focussing from 4 ft. upwards. Large stop for normal exposures, small for brilliant light. 3-speed shutter gives $1/25$, $1/50$, $1/100$ of a second. Time and Bulb. Handsomely finished in black silk ripple enamel. The back is fitted with film pressure springs. Collapsible eye-level and waist-level view finders for upright and landscape pictures. Easy loading with hinged spool holders fitted with safety flanges preventing edge fog. Weight 6 ozs.

SILVER PRESENTATION MODEL S/33

As standard "33" but finished in silver ripple enamel and complete in beautiful presentation packing.

MODEL 55

This model is similar in design and construction to the Model "33," but is fitted with the famous Ensar Anastigmat $f/6.3$, focussing down to 3 ft., and giving pin-point definition over the whole field. Weight 6 ozs.

PRICES

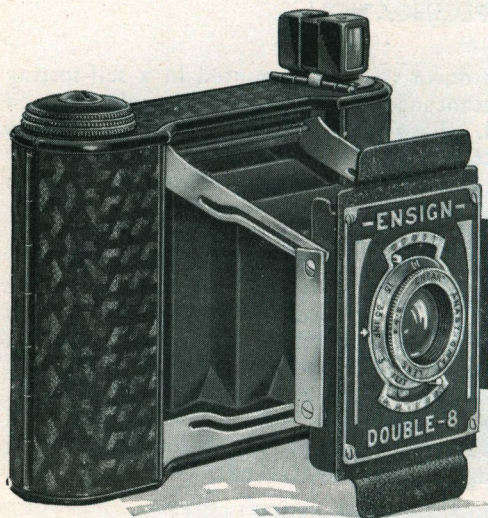
Model				
22	ALL-DISTANCE LENS	T.B.I. Shutter	...	22/-
33	ALL-DISTANCE "	3-speed Shutter	...	33/-
55	ENSAR ANASTIGMAT $f/6.3$	3-speed Shutter	...	55/-

Accessories

COLOUR FILTER complete with mount 2x (for model "55" only)	...	7/6
ENSIGN MIDGET RELEASE for "time" exposures	2/6
TRIPOD ATTACHMENT for fitting the Ensign "Midget" to a Tripod	...	2/6
ENSIGN MIDGET FILMS—6 exposures :—		
ENSIGN or SELO ORTHO 6d.; ENSIGN ULTRACHROME 7d.; ENSIGN or SELO FINE GRAIN PANCHRO 9d.		
DAYLIGHT DEVELOPING TANK	12/6
DAYLIGHT ENLARGER	17/6
COMPLETE DAYLIGHT DEVELOPING AND PRINTING OUTFIT	...	12/6

ENSIGN DOUBLE-8

FOR 16 $\frac{1}{2}$ -V.P. PICTURES ON STANDARD V.P. FILM



WITH
ENSAR F/4.5
ANASTIGMAT

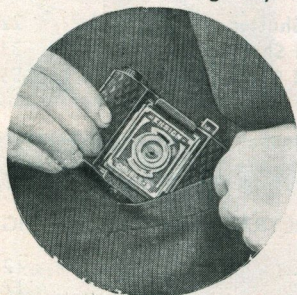
A POCKET
HIGH-SPEED
MINIATURE
CAMERA
FOR
EVERY PURPOSE

SPECIFICATION

BODY: An exceptionally sturdy little camera. Finished in ripple enamel and covered in selected hard wearing leather cloth. The back is hinged and opens conveniently for loading, the film being carried on spool pins. Flat unobtrusive winding knob. Silent wind. Tripod bush.

DEPTH OF FOCUS SCALE: A depth of focus scale is fitted to the back giving at a glance the areas in which objects will be sharp when the lens is focussed at its various positions.

SHUTTER: 3-speed Everset shutter gives Time, Bulb, 1/25, 1/50, and 1/100 second, the lever being very conveniently placed for releasing.



Slim enough for any pocket.

VIEW FINDER: A special feature is the direct optical sighting view finder. Gives an exceptionally clear image.

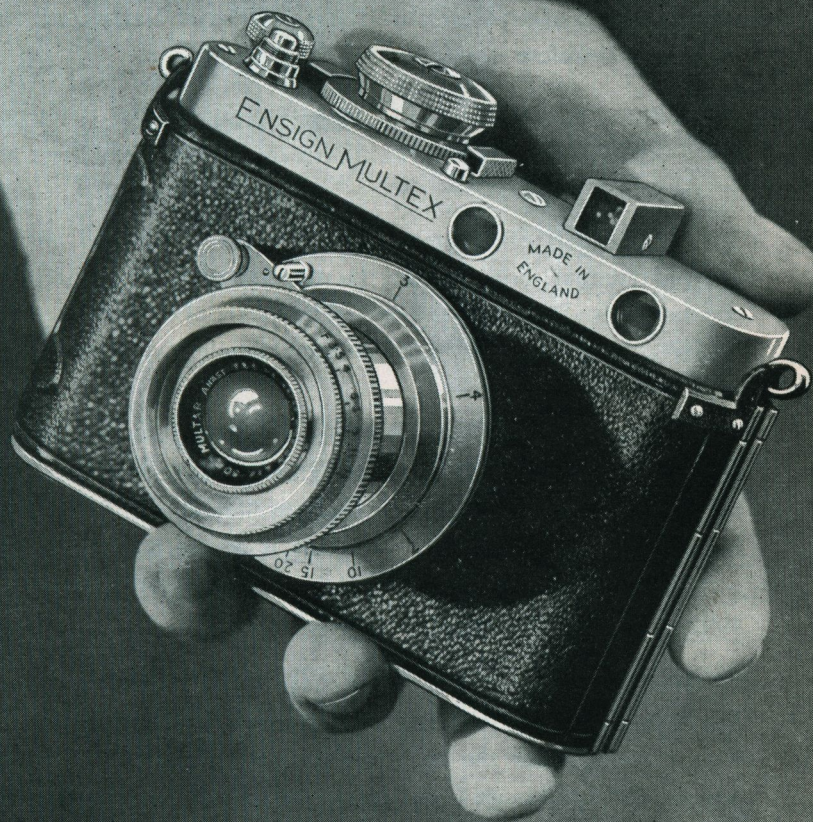
LENS: The f/4.5 Ensar Anastigmat is fully corrected and covers the full area to the corners, and gives exceptional brilliance and definition.

Size $3\frac{5}{8} \times 2\frac{3}{8} \times \frac{1}{8}$ in. Film size 27. Picture size $1\frac{5}{8} \times 1\frac{1}{4}$ in.

In morocco leather slip case.

£3 2 6

ENSIGN MULTEX



BRITISH PRECISION CAMERA

ENSIGN MULTEX II

BRITISH PRECISION MINIATURE CAMERA

TAKES 14 PICTURES $1\frac{1}{4} \times 1\frac{5}{8}$ in. (3×4 cm.)
ON STANDARD SIZE 27 OR 127 SPOOL (V.P.)

The ENSIGN MULTEX is a precision miniature camera of unrivalled merit, possessing all the vital features necessary in such a camera without the disadvantages of extreme long length of film, necessitating a large number of exposures being made before developing and complicated and therefore slow reloading.

The ENSIGN MULTEX takes 14 pictures size $1\frac{1}{4} \times 1\frac{5}{8}$ in. (3×4 cm.) on the standard size 27 film. The film is obtainable everywhere and in all emulsion speeds.

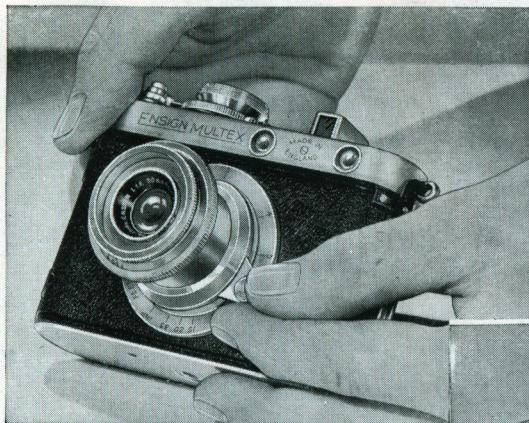
The greater part of the metalwork is made of selected aluminium and hiduminium alloys, making for extreme portability and lightness commensurate with great strength. The weight of the camera, embodying as it does a mechanism of unusual complexity, is no more than 23 ozs.

The main section is covered in best quality fine grain Persian leather, the base plate and mechanism housing being finished in lustre chrome. Mount and operating knobs are made in hiduminium finished in the natural colour of the metal. The back is double hinged, is provided with a strong closing catch and sight-hole with sliding cover. The body is fitted with brackets for neck strap.

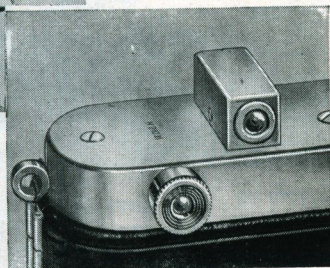
COUPLED RANGE FINDER. The range finder is coupled to the lens and is very easy to use in dull or bright light, the two images clearly superimposing when the camera is correctly focussed. A particular feature is that the range finder can be used down to a distance of 21 in. and is then exceedingly convenient for close-up scientific work on small objects, etc.

ENSIGN MULTEX II

BRITISH PRECISION MINIATURE CAMERA



The range finder is coupled to the lens and is operated by a lever. The eyepiece is adjustable for individual eyesight and is placed conveniently adjacent to the view finder.



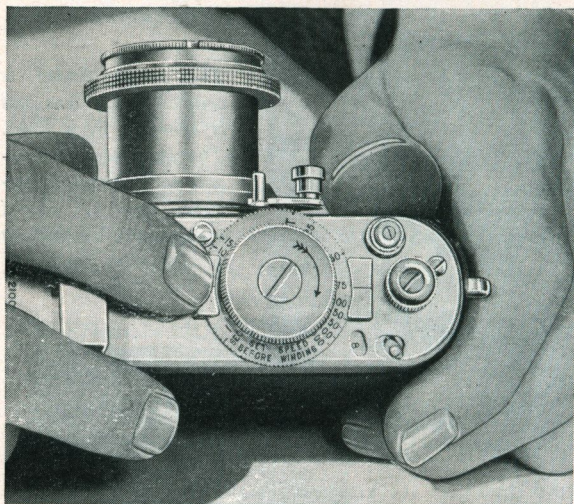
VIEW FINDER. The direct vision all-enclosed optical view finder gives an exceptionally clear image and is fitted centrally over the range finder.

AUTOMATIC FILM WINDING. The film winding mechanism is coupled to the shutter and the film is automatically wound before the shutter is set. No attention need be paid to the winding of the film after the camera is loaded and double exposure is impossible. The automatic counting device is automatically set to "zero" on removal of the film.

FILM FLATTENING DEVICE. A film pressure device automatically comes into operation after the shutter is set and is released when the film is wound.

ENSIGN MULTEX II

BRITISH PRECISION MINIATURE CAMERA



Multex has ranges of slow and fast speeds from 1 sec. to 1/1000, with coupled film winding, making double exposure impossible.

SHUTTER. The shutter is of the focal plane type having a full range of slow and fast speeds, as follows:—1 sec., $\frac{1}{2}$, 1/5, 1/10, 1/15, 1/25, 1/50, 1/75, 1/100, 1/150, 1/250, 1/500, 1/1000 and Time. The shutter release knob is conveniently placed on the top of the camera and the boss is threaded for flexible release when desired.

LENSES. The ENSIGN MULTAR f/3.5 lens of exceptionally high quality is mounted with easily adjustable diaphragm operated from the front cell. Ross and Zeiss lenses are also available. The flanges are scaled for distance measurement.

Size of camera: $5 \times 3\frac{1}{2} \times 2$ in. Weight: 23 oz.

PRICES

M/30	Ensign Multar Anastigmat	f/3.5	£19 10 0
M/54	Ross Xpres Anastigmat	f 2.9	25 0 0
M/56	Ross Xpres	„ f/1.9	32 10 0
M/84	Zeiss Tessar	„ f/2.8	29 10 0
M/85	Zeiss Sonnar	„ f/2	40 0 0
Ever-Ready	Leather Case	1 1 0
Cable Release	complete with fitting	3 6
Leather Sling Strap	complete with swivels	5 0
Colour Filters:—						
Single Filter	with mount	10 0
Sky Filter	complete with mount	12 6
Set of 4 in leather case—2X, 3X, 4X	and Graduated Sky Filter—each in separate mount	2 10 0

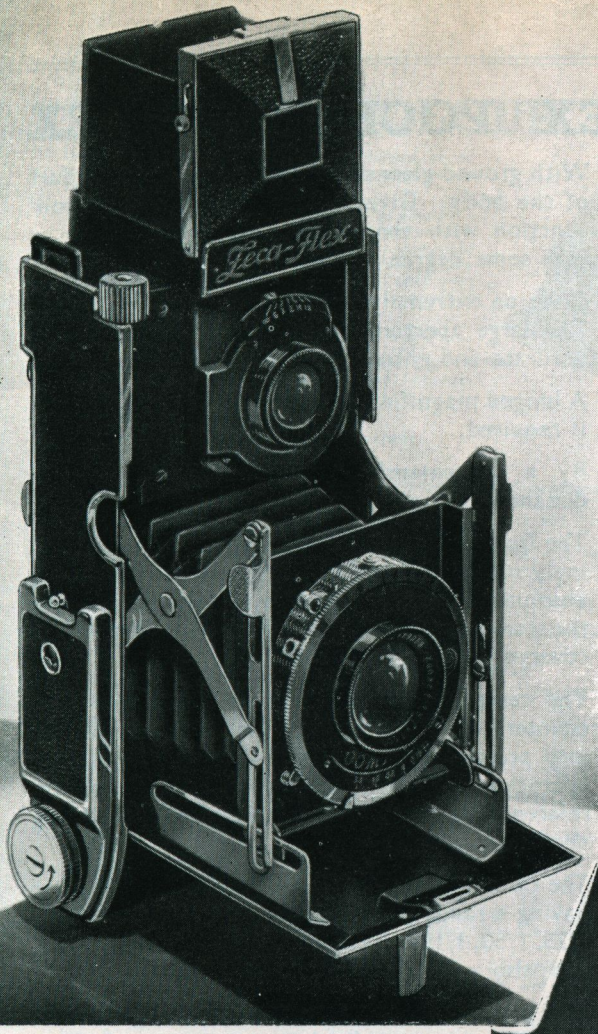
ZECA-FLEX

POCKET

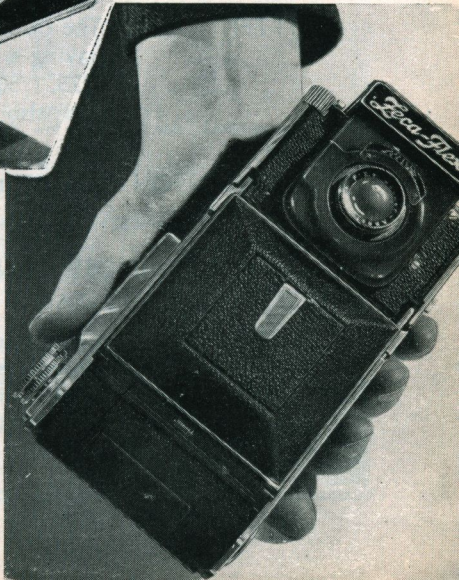
TWIN-LENS

REFLEX

The astonishing thing about the ZECA-FLEX camera is, that though it is no larger than an ordinary high-class folding camera, it has all the advantages of a Reflex and is yet built in such a sturdy and substantial manner, that it is as serviceable and effective as the more bulky box form type.



Its shape is such that it can be easily slung across the shoulder, or carried in a side pocket without inconvenience. It is exceedingly rapid in operation and can be opened for use in an instant—in fact a camera that is a joy to carry and use.



ZECA-FLEX POCKET REFLEX

- VIEW FINDER** With ground glass screen built as an integral part of the body. Gives pin-point definition in conjunction with the taking lens, and masked to give some degree of parallax compensation.
- THE F/2.9 VIEWING LENS** Gives an extremely brilliant image on the screen. The large aperture makes focussing exceedingly accurate and ensures pin-point definition.
- FINDER MAGNIFIER** A hinged magnifier can be brought into operation if required.
- MICROMETER FOCUSSING** By a conveniently placed knurled knob. A distance scale also provided on the viewing lens.
- THE FRONT** The front is secured at eight points on an exceedingly substantial and sturdy mechanism, ensuring absolute rigidity for the lens and shutter. When the camera is closed, the lens and shutter are covered by a metal shield.
- FILM COUNTER** The camera is provided with a mechanical film counter, which, after the film has been wound into position for the first exposure, comes into operation for all subsequent exposures, no reference to numbers on the film itself being necessary.
- SHUTTER** The camera is fitted with a Compur-Rapid shutter having a range of speeds from 1 sec., $\frac{1}{2}$, 1/5, 1/10, 1/25, 1/50, 1/100, 1/200 and 1/400, Time and Bulb, and also with delayed action.
- GENERAL CONSTRUCTION** The body of the camera is made of light metal casting and is exceedingly strong in construction.

PRICES, fitted with :—

No. Z/93.	SCHNEIDER XENAR F/3.5	£18	18	0
No. Z/83.	ZEISS TESSAR F/3.5	22	10	0
CASE.	Special leather case, velvet lined ; lock and key	17	6	
LIGHT FILTERS.	No. 3 complete in mount	6	6	
	Set of 3 densities in case	14	6	
SKY FILTER.	No. 17 complete in mount	10	6	
LENS HOOD.	Shadit pattern	2	0	

ENSIGN COLOUR FILTERS

Every photographer who takes his hobby at all seriously seeks to render correctly the colour values of the objects he is photographing.

The only way to make sure of this is to employ a filter. The Ensign range of filters cover every possible requirement, and enable the owner of any camera to get faithful results. They are absolutely fully corrected, being optically polished and of good even colour which will not fade. They can be successfully used with all lenses.

Made in various grades and densities, for every type of picture.

The following table sets out clearly the functions of the various types:—

COLOUR FILTERS

Colour	Purpose	For use with	Exposure multiplied
Light Green ..	General work	Ortho or Pan	2X
Medium Green ..	Landscapes, Snow Scenes	Pan	3X
Dark Green ..	Distant, Landscape, Portraits, and Reproductions ..	Pan	4X
Yellow ..	General work	Ortho	2X
Ultra Violet ..	Eliminates U.V. Rays; Sky, Distance and Mountain Scenes	Ortho Pan	Nil
Red	Distant scenes with haze, infra-red and night effects	Pan or Infra-Red	4X
Blue	Contrasts in Artificial Light	Pan	2X

SKY FILTERS

"Optigrad" .. Graduated for mountain and similar scenes with dark foreground and light sky

Nil

GLASSES ONLY

Size	Green	Optigrad	U.V.	Others
$\frac{3}{8}$ in. (19 mm.) ..	3/-	5/-	—	—
1 in. (25 mm.) ..	3/-	5/-	—	—
1 $\frac{1}{8}$ in. (31 mm.) ..	3/-	7/-	4/-	3/6
1 $\frac{3}{8}$ in. (39 mm.) ..	4/6	10/-	—	—
2 in. (51 mm.) ..	6/6	15/-	—	—

INTERCHANGEABLE SPRING MOUNT



Size	To fit Lenses up to	Takes Filter	Price Mount only
No. 1	$\frac{7}{8}$ in.	$\frac{3}{8}$ in.	3/-
No. 2	1 in.	1 in.	3/-
No. 3	1 $\frac{1}{8}$ in.	1 $\frac{1}{8}$ in.	3/6
No. 4	1 $\frac{3}{8}$ in.	1 $\frac{3}{8}$ in.	4/-
No. 5	2 in.	2 in.	5/6

LEATHER CASES

Solid bound best hide, velvet lined, to take filter in mount.

No. 1	2/-
No. 2	2/-
No. 3	2/-
No. 4	2/6
No. 5	3/6

COMPLETE SETS

Sets of 3 Green Filters 2X, 3X and 4X, with one interchangeable spring mount in solid leather case.

No. 8 to fit lenses up to $\frac{7}{8}$ in. ..	14/6	No. 11 to fit lenses up to 1 $\frac{1}{8}$ in. ..	20/-
No. 9 " " " 1 in. ..	14/6	No. 5 " " " 2 in. ..	30/-
No. 10 " " " 1 $\frac{1}{8}$ in. ..	14/6		

ENSIGN SUPPLEMENTARY LENSES

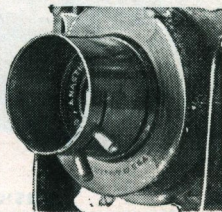
Considerably increase the scope of work possible with hand cameras. For Portrait "close-ups," Wide Angle, Copying, and Telephoto Photography. To fit lenses up to 1 $\frac{1}{8}$ in. outside diameter. With Holder, each 6/6 Without Holder 3/6

Set of four lenses with Holder 16/-

"SHADIT" SPRING LENS HOOD

This all-metal lens hood grips the front cell firmly and enables good clear pictures to be taken even against the light. It is instantly attached and removed, and if desired will take standard light filter mounts. Made in 11 sizes.

For lens mounts, $\frac{3}{8}$, $\frac{7}{8}$, 1, 1 $\frac{1}{8}$, 1 $\frac{3}{8}$, 1 $\frac{1}{2}$ in. dia. ..	2/-
For lens mounts, 1 $\frac{3}{8}$, 1 $\frac{1}{2}$, 2 in. dia. ..	2/6



ENSIGN Super Quality CAMERA CASES



LEATHER.

No Ensign leather case is made from dyed, buffed, or doped material of any kind. Guaranteed to be made of the finest British materials only. Solid hide, full grained, and hand curried, i.e., old-fashioned bridle leather.

TAN MAIL AND SILK MOHAIR

All have double-turned binding, so that no raw edge whatever appears. Only best quality British materials are used and each is provided with long leather sling strap.

For Cameras	Tan Mail, Bound edges		Silk Mohair, leather bound		Leather Black or Brown		Leather velvet-lined Brown only	
Ensign Midget ...	—	—	—	—	—	4/6	—	—
„ Double-8 ...	—	—	—	—	—	4/6	—	—
All-Distance Twenty ...	110	3/-	510	3/-	40	7/6	—	—
Box Ensign 2½B ...	101	3/-	—	—	—	—	—	—
„ „ 2½ ...	102	3/6	—	—	—	—	—	—
Ensign E.20 ...	112	3/-	510	3/-	40	7/6	—	—
Pocket Twenty ...	—	—	503	3/-	—	—	—	—
Ensign Selfix-20 ...	114	3/-	503A	3/-	29	5/6	33	7/6
„ Selfix-220 ...	115	3/-	—	—	28	5/6	32	7/6
„ Carbine No. 7 ...	103B	3/-	—	—	30C	7/6	34	10/6
„ Nos. 10 and 14 ...	104	3/6	—	—	31	8/6	35	12/6
Brownie No. 2 ...	111	3/-	511	3/-	—	—	—	—
„ 2A ...	113	3/6	—	—	—	—	—	—
Ensign No. 3 ...	108	4/-	—	—	6	10/-	10	13/-
„ No. 3A ...	109	4/6	—	—	7	11/6	11	15/-
Speed Film Reflex ...	—	—	—	—	—	—	13	18/6
Ensign Auto Range ...	—	—	—	—	—	—	15	12/6
do. (Focal Plane) ...	—	—	—	—	—	—	14a	15/6
Ensign Autorange-220 ...	—	—	—	—	—	—	17	12/6
„ Multex ...	—	—	—	—	—	—	18	21/-
Zeca-Flex ...	—	—	—	—	—	—	16	17/6

ENSIGN "CLIP-ON" DIRECT VISION VIEW FINDER

FOR "TWO-ON" AS WELL AS STANDARD SIZE PICTURES By means of the spring clip can be instantly attached to almost any folding camera, and will remain securely in position. The cover is provided with two mask sizes; at one end, the larger size, for 2½ × 3½ in.; at the other, the smaller size, for 2¼ × 1½ in.

The change from one to the other is effected simply by gripping the cover at both ends, lifting off, and reversing. The finder without mask is suitable for pictures 2¼ × 2¼ in. Chromium finder; black enamel cover 6/6

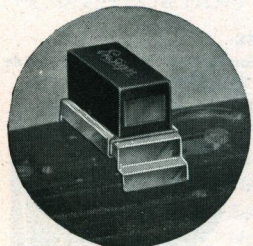
ENSIGN VIEW FINDER MAGNIFIER

Fits on to the view finder. The adjustable magnifying lens shows the picture in much greater detail and well shaded.

No. 0 for Ensign Selfix 4/6
 No. 2. for View Finders 1½ × 1½ 4/6
 Shade only 9d.

ENSIGN LENS CLEANERS

Special polishing material, prevents condensation. Box of 2 9d.
 Special tissue, per pad of 10 sheets 2d.
 Outfit containing special cleaning solution, brush and polishing cloth 1/3



EXPOSURE METERS

ELECTRO BEWI

NEW 1937 MODEL SUPER-BEWI Photo Electric Exposure Meter with extra-sensitive everlasting photo cell and combined optical meter for still or cine.

Can be carried in the waistcoat pocket without difficulty. Measures weak interior light by means of a built-in optical meter. Shows at a glance diaphragms from $f/1.4$ to $f/36$, and from $1/3000$ sec. to 1 hour. No calculations. Suitable for all negative emulsions. Fitted with depth of focus scale.

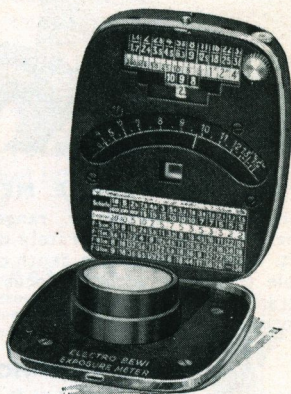
STANDARD MODEL £4 10 0

SUPER-BEWI 5 5 0

SPECIAL MODEL for use with LEICA

Cameras 4 10 0

Soft leather Wallet with "Zip" fastener 5/-



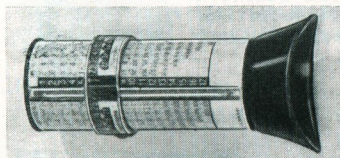
BEWI VISUAL METERS

JUNIOR. Gives correct exposure without calculations. £1 1 0

SENIOR. A comprehensive meter giving correct reading under all conditions, for all emulsions and all climates. Also movement speed chart and other useful data £1 16 0

LEICA. For use with Leica cameras 2 2 0

Leather Case for each 2/6



The New PHOTOSCOF

AUTOMATIC PHOTO-ELECTRIC METER

Scientifically designed for absolutely correct measurement of the light **actually on the subject**. Ingenious positioning of an inclined photo-cell (patent 348662) combined with a mirror, limits the angle of measurement to about 45° — 20° above the meter axis and 25° below. Top-light influence is eliminated.

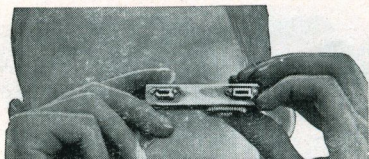
Gives direct "stop" readings. Clear, easily-read markings. The time scale covers from 30 secs. to $1/1000$ sec. Cine speeds 8 to 96 frames per second. A first-class precision instrument, beautifully made, and fitting easily in the pocket—size $2\frac{7}{8} \times 3 \times 1\frac{3}{16}$ in.

Complete in leather ever-ready case ... £3 10 0



ENSIGN CAMERA ACCESSORIES

ENSIGN RANGE FINDER



An absolutely accurate means of ascertaining exact distances for any object in any light at any time. Milled adjusting dial is conveniently placed for easy movement whilst sighting. Eyepiece is adjustable for eyesight. Measures only $3 \times 1 \times \frac{1}{2}$ inch.

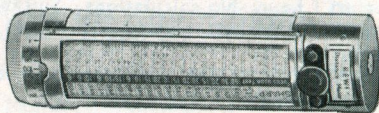
Complete in leather case ... £1 12 6

"BEWI" DISTANCE METER

This distance meter or range finder measures distances accurately down to 3 ft. from infinity, with depth of focus table to ensure accurate focus on all distances.

£1 16 0

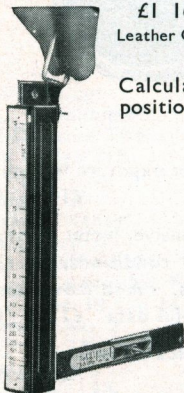
Leather Case 2/6



HOLBORN DISTANCE GAUGE

Calculates the distance an object is from the camera from any position. Very accurate. Scaled in feet 5/-

Leather Case 2/-

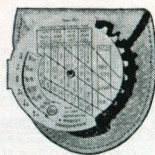


PRIMUS DISTANCE GAUGE

For calculating distances between camera and objects. Made in aluminium with silvered pendulum. Complete in leather case.

No. 1. Scaled in feet 2/-

No. 2. Scaled in metres 2/-



ENSIGN POSOMETER

A neat little exposure reckoner. Can be carried in the waistcoat pocket. For every subject, and every plate or film. In leather case with snap fastener.

1/6



HOLBORN ROLL-FILM HOLDER

Winds films in the normal direction. For use with Plate and Reflex Cameras. Takes the standard 8-exposure $3\frac{1}{2} \times 2\frac{1}{4}$ in. roll film. All-metal.

No. 1. For $3\frac{1}{2} \times 2\frac{1}{2}$ in. cameras 17/6

No. 2. For $\frac{1}{4}$ -pl. cameras ($3\frac{1}{2} \times 2\frac{1}{4}$ in. film) 17/6

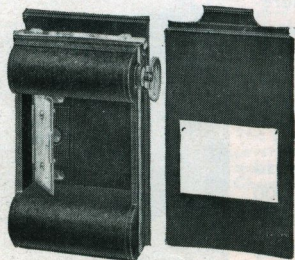
"TWO-ON" Model for whole or half-size pictures. Enables two exposures to be made on each film, if desired, by means of sliding mask and double sight-hole; as well as standard full size.

No. 7. For $3\frac{1}{2} \times 2\frac{1}{2}$ in. cameras 23/6

No. 7a. For $\frac{1}{4}$ -pl. cameras ($2\frac{1}{4} \times 3\frac{1}{4}$ in. film) 23/6

Specify camera when ordering.

"TWO-ON" VIEW-FINDER. A handy collapsible attachment for full and half-size pictures. Fits any camera .. 2/-



TRIPODS AND ACCESSORIES

METAL TELESCOPIC

Black enamelled, automatic closing, with nickel top.

No.	Sections	Height	Closed	Weight				
1	3	44 in.	17 in.	16 oz.	6/6
4	4	49 "	16 "	21 "	10/6
5	5	49 "	14 "	26 "	12/6
6	7	49 "	12 "	23 "	15/-

DE LUXE TELESCOPIC

Ribbed celluloid finish, polished tubes. Closes automatically.

No.	Sections	Height	Closed	Weight				
12	3	45 in.	17½ in.	18 oz.	10/6
16	7	49 "	12 "	24 "	17/6

"HIP POCKET-FLAT"

Can easily be carried in the hip pocket. Black enamelled automatic closing. Polished tubes. Closed, 8½ in. Open, 46 in. Weight, 21 oz. 7 sections. No. 22. With leather case 25/-

"FEATHERWEIGHT"

FLAT. In metal case. Extended, 42 in. Closed, 11 in. Weight, 17 oz. 7 sections. No. 20 22/6

HOLBORN UNIPOD

A single tripod leg—having 8 sections extending to 57 in.—closing to 9 in. A rigid support from which time exposures can easily be made. Well-finished, easy-working sections, automatically locking.

No. 1.	Smooth finish	7/6
No. 2.	Ribbed cellular finish	10/6



PEDICOS BODY TRIPOD

A miniature tripod which can be carried easily in the pocket. Braced against the chest, the camera can be held so firmly that exposures up to 1 sec., and even longer, can be made.

Ideal for miniature cameras. Has two extensions, and neck strap adjustable to any height. The top is quickly detachable and may remain on the camera. In leather case.

17/6

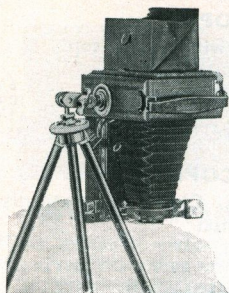
CAMSTEDI

An ingenious device for giving support to the arms and wrists. It enables the camera to be held quite rigid for time exposures, either at eye or waist-level. Made of strong webbing with velvet-lined hide wrist-pads. In black or brown.



ENSIGN CAMERA ACCESSORIES

UNIVERSAL BALL AND SOCKET HEAD



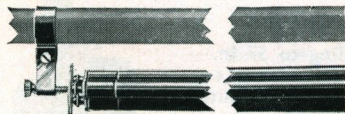
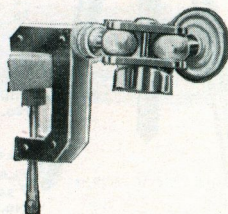
Enables a camera to be set at any angle. Also for using the tripod for supporting the camera in a vertical position for such work as photographing pages direct from books, small objects, coins, maps, and any object which comes within its range.

For use with any camera 3/6
Midget pattern. Very compact 2/6

THE "MULTIPOD"

A pocket tripod. The clamp fitting allows the "Multi-pod" to be fitted almost anywhere always allowing the camera to be set absolutely level.

Nickel-plated 7/6



CYCLIST TRIPOD CLIPS

Enables tripod to be carried on a bicycle as unobtrusively as an ordinary pump.

Per set 3/6

WIRE SHUTTER RELEASES

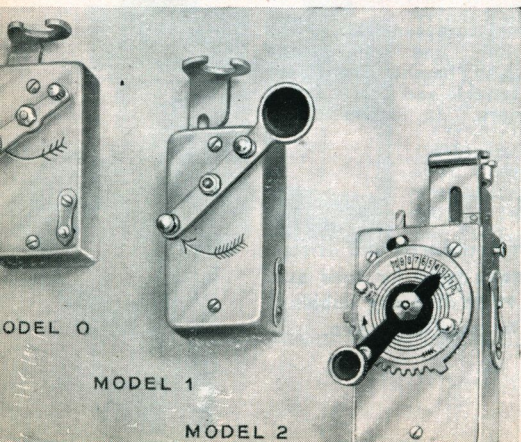
Can be fitted to most types of metal shutters. Made of metal with strong fabric covering and a flexible core of close wound steel wire. The plunger projecting beyond the outer casing operates the shutter by pressure.

In 3, 6, and 10 in. lengths each 1/3

"AUTOTIMER" SHUTTER RELEASE

Enables you to include yourself in your picture. Screws into the tripod bush (except No. 0) and operates the shutter release 15 seconds after it is set in motion. Reliable in action, and simple to use. Handsome nickel-plated finish.

Packed in leather case (except No. 0).



Model 0. A simple model for instantaneous exposures .. 4/6

Model 1. For instantaneous exposures, delays the opening of the shutter for 15 seconds at whatever speed it is set 7/6

Model 2. For time or instantaneous exposures. Makes instantaneous exposures at shutter speeds, and time exposures of $\frac{1}{2}$ to 10 seconds, 15 seconds after it is set in action 12/6

Model 3. Special Model for Leica cameras. For instantaneous exposures. Delays the opening of the shutter for 15 seconds at whatever speed it is set 15/-

ENSIGN INDOOR PHOTOGRAPHY



No. 1 Outfit

SYNCHRO-FLASH OUTFITS

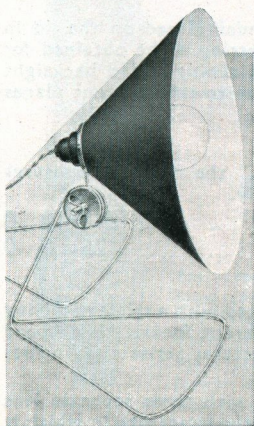
FOR SYNCHRONISED INDOOR SNAPSHOTS BY FLASH-BULB OR FLASH-POWDER.

A simple means of ensuring perfect flashlight pictures. Both the shutter of the camera and the flash-bulb are controlled by the camera-release. Easily fitted. For operation with flash-bulb or flash-powder.

Outfits for various types of shutter from 10/6 each. Always state shutter and camera when ordering.

MULTIFLOOD OUTFIT

A unique outfit capable of giving an intense light. The large 12-in. reflector mounted on a universal joint enables the light to be projected in any direction. The stand will stand anywhere, hang on the back of a chair or from a picture rail. Outfit includes reflector, with Bakelite lamp-holder, 6 ft. of flex and plug, and universal head stand. PRICE (without lamp) 6/-



Multiflood

HIGH INTENSITY FLOOD LAMPS

Osram, "Photo-flood" 2/6
 Nitrophot, 200 watts 7/6
 Standard Nitrophot, or Osram, 500 watts 20/-

AMATEUR FLASH-LAMP

Flash powder is fired by a cap. Strongly made of metal .. 5/-
 Flash Caps for use in above lamp. For igniting flash powder. Box of 50 1/-

"GEKA" FUMOSIN SMOKE-LESS FLASH POWDER

Smokeless and noiseless. Keeping qualities guaranteed.
 10 grm. .. 25 grm. .. 50 grm.
 1/6 .. 2/6 .. 4/3

JOHNSON'S FLASH POWDER

Small .. 1/- Large .. 1/9 1 oz. tins .. 2/6
Magnesium Ribbon in $\frac{1}{2}$, $\frac{1}{4}$ and 1 oz. coils per oz. 2/-
Flashmeters (Magnesium Ribbon) Pistol 9d.

PHOTO FLASH-STICKS

Can be held in the hand. Per box of 6 1/3

PHOTO FLASH-BULB OUTFITS

Snapshots can be made indoors, such as have hitherto been quite impossible, in any room, any time, anywhere, and the subject need not even be aware of the photographer. Operates from an ordinary torch battery. Each bulb gives one flash. No smoke! No noise!

No. 0 Outfit with 2 flash-bulbs, Silverlite folding reflector, torch, battery, and test-bulb .. 5/6

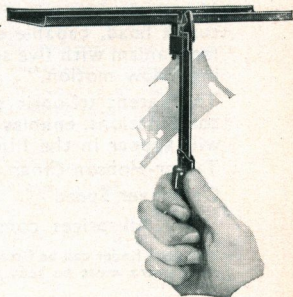
No. 1 Outfit with 2 flash-bulbs, Multiray metal reflector, torch, battery, and test-bulb .. 12/6

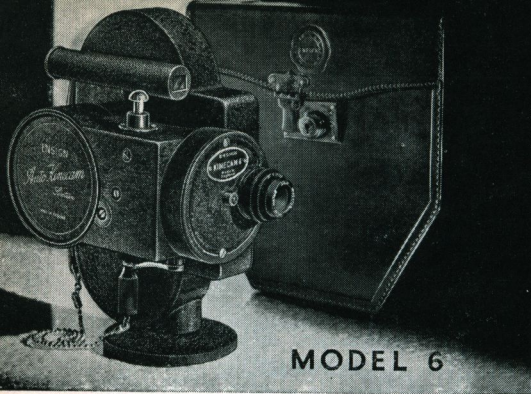
FLASH BULBS

Large, for groups up to 40-50. Sashalite 1/3
 Philips Photoflux 1/4
 Small, for close-ups and groups of 4-5. Sashalite 8d.
 Philips Photoflux 10d. Adapter necessary for small Sashalite .. 1/8



State Voltage when ordering.





ENSIGN KINECAM 16 mm. CINE CAMERAS

Ensign Kinecam 16 mm. cameras take 50 ft. or 100 ft. of film, have a precision silent-running mechanism, housed in an elegant die-cast body, and handsomely finished in silk ripple enamel.

The shape fits snugly to the face, which makes for steadiness when operating. It is fitted with a strong carrying handle, and an exposure table is fitted to the side. The camera is operated by a double spring clockwork, having ample reserve power, and taking 30 ft. of film without rewinding.

Loading may be carried out in full daylight.

A hand turn movement is also provided, which is reversible for "dissolving" effects, and the exposure knob can be locked in the operating position for continuous running, and by careful manipulation of this knob, single exposures can be made for trick titles, cartoons, etc.

The Direct-Vision Tube Finder gives an exceptionally brilliant image of the same size as the picture taken.

A feature of the Ensign Kinecams is a direct view finder placed on the lid in the direct axis of the lens, thus enabling accurate centring to be obtained for very close-up shots down to 1 ft. from the camera. A sliding scaled backsight corrects the natural misalignment at short distances due to the different planes of the lens and view finder.

MODEL 6

Has three speeds—"Normal," "Slow Motion," "Slow," the relative exposures being: 1/32, 1/128, and 1/16 of a second respectively.

Taylor-Hobson Cinar Anastigmat f/2.8, 1-in. focus	£18 18 0
Dallmeyer Speed , f/1.5, 1-in. ,,	25 0 0

MODEL 8

Has all the features of the Model 6, and in addition is fitted with a triple revolving turret head, capable of taking any three lenses of different focus. Multi-speed mechanism with five speeds, i.e., 8, 12, 16, 32, and 64 pictures per second, including "slow motion."

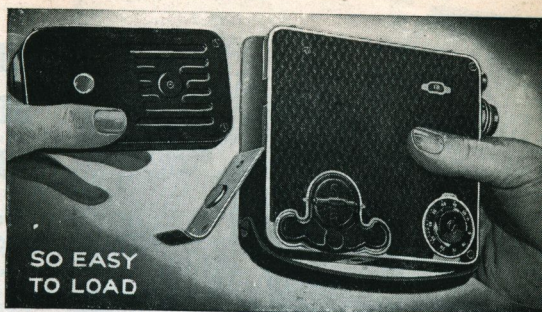
The patent tri-optic synchronising view finder; fitted with three separate lens combinations, enables a correct view to be obtained in the exact size in which it will appear in the film, whichever lens is being used on the turret.

Taylor-Hobson Cinar Anastigmat f/2.8, 1-in. focus	£45 0 0
Dallmeyer Speed ,, f/1.5, 1-in. ,,	50 0 0

All prices complete with hand-sewn leather cases, velvet-lined.

The axial finder can be fitted to earlier model Kinecams at an extra charge of £2 10s. 0d. In all cases the camera must be sent for fitting.

ENSIGN- SIMPLEX POCKETTE 18mm. CINE CAMERA



A marvellously compact camera which fits comfortably into the pocket or can be carried as easily as a book; the size is $1\frac{3}{8} \times 4\frac{1}{2} \times 5\frac{1}{2}$ in. and it only weighs 35 oz. Loading is a matter of seconds—a charger containing 50 ft. of film is inserted in the camera and engages automatically with the mechanism. No threading. The film can be removed when partly exposed, if desired.

The motor runs 25 ft. at one winding, and there is a footage indicator, with dial control, which stops the mechanism automatically when a predetermined footage has been run. Exposure trigger can be set to give continuous running or single frame exposures. Speeds of 16 and 12 frames a second.

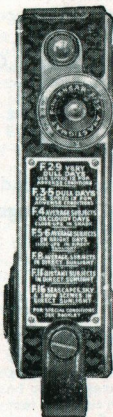
Folding direct vision and waist-level finders. Exposure guide fitted to camera. Covered in black diamond patterned fabric. Leather carrying handle. Tripod bush.

Ensar	f/3.5 1-in. fixed focus lens	...	£20	0	0
Dallmeyer	f/2.9 1-in. lens in focussing mount	...	25	0	0
Ross	f/1.9 1-in. lens, in focussing mount	...	27	10	0

FILM. Chargers loaded with 50 ft. of 16 mm. film :—

Panchromatic	16/-
Supersensitive Panchromatic	19/6
Kodachrome Colour Film	24/6

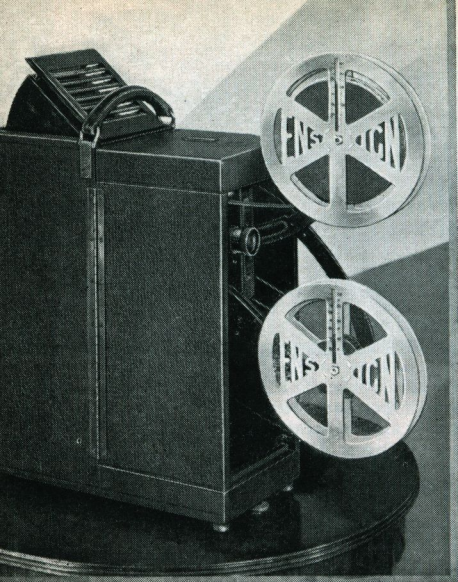
(Prices include processing).



ENSIGN-SIMPLEX POCKETTE TRAVEL OUTFITS

Any of the three Ensign-Simplex Pockette Cameras can be supplied in a specially fitted travel case of natural colour leather, hand-sewn, and velvet-lined, complete with Telephoto Lenses, colour filters for each lens, portrait attachment and masks for view finder. There is accommodation for two extra film chargers and a special drawer is provided with divisions for the telephoto lenses, filters, portrait attachment and masks. The drawer can be removed as required to allow for a third film charger. The carrying case is fitted with lock and key carrying handle and shoulder straps.

With Ensar f/3.5 Model and Dallmeyer 2-in. f/2.9 and 3-in. f/3.5 Telephoto Lens, with masks, 2X and 4X Colour Filters for each lens and portrait attachment	£44	17	6
With Dallmeyer f/2.9 Model and as above outfit but without portrait attachment	49	5	0
With Ross f/1.9 Model and as above but without portrait attachment	50	15	0



ENSIGN 16 mm. SILENT-SIXTEEN PROJECTORS

For all voltages, 100-250,
A.C. or D.C.

Ready for use at a moment's notice. No trouble to fit up or put away. The mechanism is permanently fixed in a strong but light case, which is covered with finest quality black leather cloth. By one movement both reel arms are brought into position. The mechanism is mounted in die-cast housings, and is silent in operation. Embodies positive claw and patent flickerless barrel-type shutter, ensuring rock-steady projection. Optical equipment is designed as

one unit, with special 2-in. f/1.8 Dallmeyer "Superlite" projection lens in hinged mount. "Quick-thread" focussing.

The framing device centres the picture on the screen by the movement of a lever. No need to move projector.

The driving unit is mounted in a separate section with the lamp, and embodies a powerful silent-running fan, which cools both lamp and motor regulator. (In the Model 300B, an auxiliary fan is mounted directly beneath the mechanism to cool operating parts, gate and film during working).

An auxiliary resistance is included for all voltages from 100 to 250 A.C. or D.C. A still picture can be shown.

MODEL 100B

With specially constructed 100-watt 100-volt lamp, and special reflector, all leads, 400-ft. reel, Dallmeyer "Superlite" 2-in. f/1.8 projection lens, "all-voltage" resistance, spare spring take-up, and driving belt.

£17 10 0

Spare Lamps 12/6

Hand-drive Model, with 6 or 12-volt, 72-watt lamp, for use from accumulator or car battery £15 0 0
Dual Model, with motor, for use from standard circuits or from accumulators with hand drive 18 15 0

MODEL 300B

With specially constructed 300-watt 100-volt lamp and special reflector, all leads, 400-ft. reel, oil bottle, Dallmeyer "Superlite" 2-in. f/1.8 projection lens, "all-voltage" resistance, spare spring take-up, and driving belt.

£29 10 0

Spare Lamps 26/-

Dual Model, with motor, for use from standard circuits or from accumulators with hand drive £30 15 0

ENSIGN CINE ACCESSORIES

CINE-PAN TRIPOD

The top plate is hinged and the camera can be fixed at right angles for floor "shots."

The camera is fixed by a screw hidden in the head when closed. Panorams a complete circle, and elevates to 150 degrees.

Top leg sections, fashioned oak, lower sections of steel tube, chromium-plated.

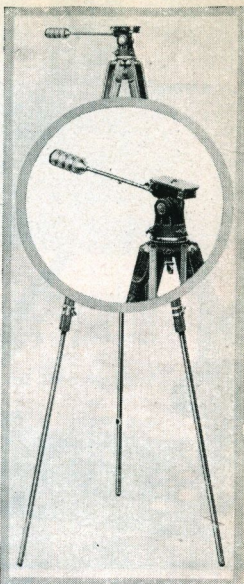
Height fully extended, approximately 6 ft., closed 2 ft. 9 in. One of the steel legs accommodates a wire bracing arrangement.

The large lever grip holds adjusting spanners.

The lever control is permanently attached by a knuckle joint, and folds down when the tripod is closed.

One end of each leg is provided with a spike for use on rough ground. The other end of each leg has a rubber buffer for use on slippery floors.

£7 15 0



"POPULAR" FILM SPLICER

Available in three models:
16 mm., 9.5 mm. and 8 mm.

Fitted with an accurately ground and hardened steel scraper, film shearing lever and an efficient pressure pad, makes joining a quick and simple operation.

Dull-nickel plated, and mounted on a polished wood base with rubber feet. Two holes are provided in the base for immediate and easy fitting to the "Popular" Editor. Complete with 1 oz. bottle of Ensign "Universal" Film Cement.

For 16 mm. films (silent or sound) 17/6
For 9.5 mm. films 17/6
For 8 mm. films 17/6

"POPULAR" FILM EDITOR

Two arms, each consisting of a hand crank, are geared 3—1, and fitted to a 20 in. long by 5 in. wide polished stained base, which has been designed with curved ends to avoid the film catching on the corners when stopped for examination. Complete with Ensign "Popular" Film Splicer, and 1 oz. bottle of Ensign "Universal" Film Cement:—

For 16 mm. reels £2 2 6
For 9.5 mm. reels 2 2 6
For 8 mm. reels 2 2 6

Any of the above Models can be supplied without Splicer 1 5 0

"UNIVERSAL" FILM SPLICER

for 16 mm. Silent and Sound, 9.5 mm. and 8 mm.

Fitted with an automatic dry scraper so constructed to prevent the excessive scraping of the base after the emulsion has been removed.

The trimming of the ends and actual jointing are carried out in one movement. A polished oak base fitted with rubber feet to prevent slipping is provided, and the splicer is held in position by means of special plugs which allow for removal from the block to the editor board without further fixing.

Complete with 1 oz. bottle of Ensign "Universal" Film Cement.

£2 17 6

"UNIVERSAL" FILM EDITOR

A highly polished oak base 32 in. long by 6 in. wide is fitted with two cast arms each consisting of a hand crank, geared 3—1 to a common spindle into which may be fitted any of the three interchangeable reel spindles required for the different sizes of film. Curved base.

Height of arms from the base allows for the use of 800 ft. 16 mm. reels. Complete with Ensign "Universal" Splicer and 1 oz. bottle of Ensign "Universal" Film Cement:—

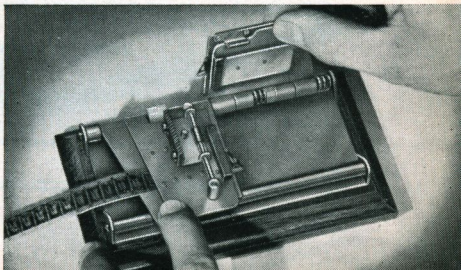
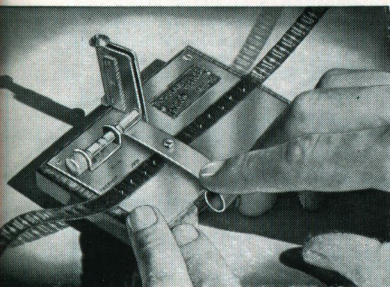
SINGLE

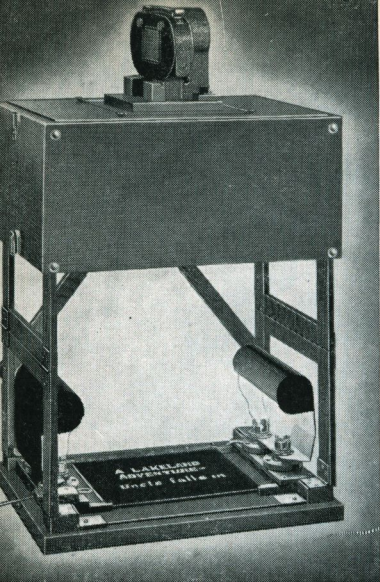
MODEL D For 16 mm. reels .. £5 7 6
.. E For 9.5 mm. reels .. 5 7 6
.. F For 8 mm. reels .. 5 7 6

DUAL

Consisting of a combination of spindles for two sizes of film. For reels

MODEL DE. 16 mm. and 9.5 mm. £5 12 6
MODEL DF. 16 mm. and 8 mm. 5 12 6
MODEL EF. 9.5 mm. and 8 mm. 5 12 6
Spare sets of spindles for 16 mm., 9.5 mm. or 8 mm. reels per pair 5 0





ENSIGN ANIMATOR AND TITLER

FOR TITLES AND CARTOONS IN BLACK AND WHITE OR FULL COLOUR.

Designed to give maximum ease and comfort whilst setting up and photographing titles, carrying out animation with figures and drawings, or photographing any suitable object within its range. A self-contained unit, folds away for easy transport and storage, is firm when erected, consistently accurate and simple to operate. The size of title background is 10x7½ inches, providing a satisfactory margin with the lens focussed at 2 ft. This also allows the use of art titles published in the periodicals.

The outfit includes complete set of CAPITALS and LOWER CASE white felt letters, reversible black/white flock lined title background, background cover glass, tweezers and set-square for alignment and setting of the letters, all of which are stored in a special detachable box.

PRICE COMPLETE (less lamps) £6 17 6

Interchangeable panels 12/6 each.

When the outfit is required for use with cameras other than Ensign Kinecam or Simplex the camera should always be sent for fitting.

ENSIGN PROJECTOR REELS

The end of the film is placed over the core of the reel, and a spring clip is brought down, holding it securely in place. Made of aluminium. Equipped with footage indicator.

400 ft.			200 ft.		
16 mm.	3/6		16 mm.	2/6	
9.5 mm.	3/6		9.5 mm.	2/6	
			8 mm.	2/6	

ENSIGN HUMITINS

With embossed rims, efficient air trap, easily removable lid, and with white title strip, complete with absorbent pad for damping.

400 ft.			200 ft.		
16 mm.	1/6		16 mm.	1/6	
9.5 mm.	1/6		9.5 mm.	1/6	
			8 mm.	1/6	

HUMITIN CARRYING BAGS

Made of grey canvas with leather bottom reinforced with wood. Edges and handle bound in leather. Zip fastener. Prices without Humitins:

TYPE "A"	
To hold 6 400-ft. 16 mm. Humitins or 7 400-ft. 9.5 mm. Humitins	11/6
TYPE "B"	
To hold 10 400-ft. 16 mm. Humitins or 12 400-ft. 9.5 mm. Humitins	15/-
TYPE "C"	
To hold 12 200-ft. 8 mm. Humitins	7/6

ENSIGN "UNIVERSAL" FILM CEMENT

Joins all makes 16 mm., 9.5 mm. and 8 mm. films. With non-corrosive metal-stemmed brush.

1-oz. bottle 1/-

ENSIGN "UNIVERSAL" FILM CLEANER

4-oz. bottle and two "Selvyts" 2/6



ENSIGN "UNIVERSAL" PROJECTOR SERVICE KIT

Includes One-drop Oil Can, bottle of Lubricating Oil, Gate Brush, bottle of Lens Cleaning Solution and one each "Selvyt" Gate and lens polishers. 4/6

ENSIGN RIGID SILVER SCREEN

No. 100 24x18 in. 22/- No. 101 32x24 in. 32/- No. 102 40x30 in. 42/-

FILMS FOR SALE. A large selection of Ensign Films (both 16 mm. and 8 mm.) is available for purchase at prices varying according to length, including MICKEY MOUSE and SILLY SYMPHONIES.

FILMS FOR HIRE. The ENSIGN FILM LIBRARY includes many films featuring well-known stars and a comprehensive catalogue is issued entitled "Pleasure Hours," 154 pages 1/6

ENSIGN MAGNAPRINT

SUPER-SPEED CONDENSER ENLARGERS

WITH CONDENSER-DIFFUSED LIGHTING SYSTEM.

Enlarging is the most fascinating of all photographic practices and everyone who wishes to enjoy the hobby to its fullest extent should invest in a Magnaprint Enlarger. It is all very simple.

Ensign Magnaprint Enlargers give you super-speed without loss of quality, due to the perfect system of illumination, whereby the light, diffused at its source and requiring no adjustment, is concentrated on the lens by a powerful double condenser.

By this means, every ray of light coming from the illuminating source is used for the purpose of exposure.

Grain, scratches and imperfections in the negative are reduced to a minimum and at the same time excessive contrast is controlled.

The great speed of "Magnaprint" Enlargers can best be realised by the fact that it takes no more than three seconds to make a $\frac{1}{2}$ -pl. enlargement from a $2\frac{1}{4} \times 3\frac{1}{4}$ negative of normal quality.

Ensign Magnaprint Enlargers are the perfect combination of light and speed.

MAGNAPRINTS FOR MINIATURE NEGATIVES

FOCUSING. The body slides freely on the supporting column and clamps in the required position. Fine focussing is then carried out by the helicoidal lens mount which is provided with a large knob which locks it firmly in position at the required point.

GENERAL CONSTRUCTION. The lamp body is constructed of light metal. It has a removable top fitted with a lamp-holder. Its tubular mounting is very rigid, free from vibration and provides ventilation to the condensers. The general finish is ripple enamel and nickel plate. The carrier is provided with masks for a variety of sizes. The baseboard is very substantial, supports the mechanism with great rigidity, and is provided with sizes chart and paper clamps. All models are wired complete with plug, flex and switch.

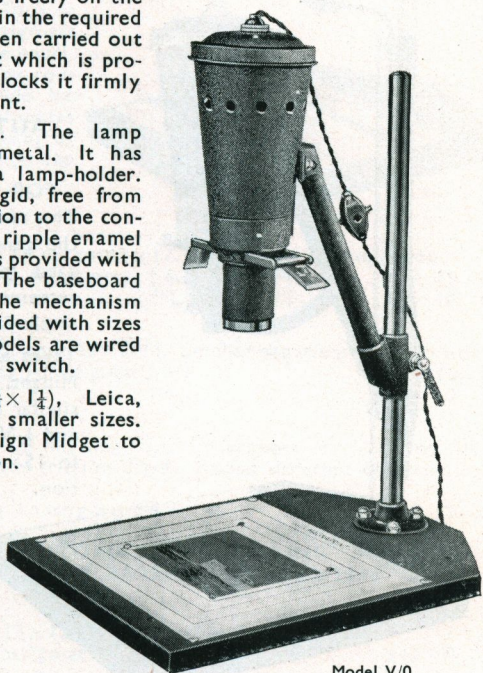
For half "vest-pocket" ($1\frac{1}{2} \times 1\frac{1}{4}$), Leica, Contax, Ensign Midget, and all smaller sizes. Enlarges to half V.P. and Ensign Midget to 15×12 , other sizes in proportion.

Model V/O With Ensar Enlarging Anastigmat f/6.3
£4 15 0

Model V/OM With Magnar Enlarging Anastigmat f/4.5
£6 10 0

Special carrier for Leica or Contax negatives in strip 10/6

Silvalux lamp, 100-watt .. 2/9



ENSIGN MAGNAPRINT

SUPER-SPEED CONDENSER ENLARGERS

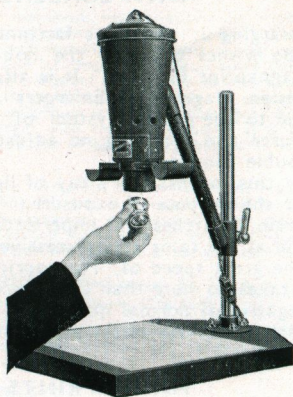
FOR USE WITH LEICA AND CONTAX LENSES

This Magnaprint is made specially to enable the Leica or Contax owner to use his lenses for enlarging purposes.

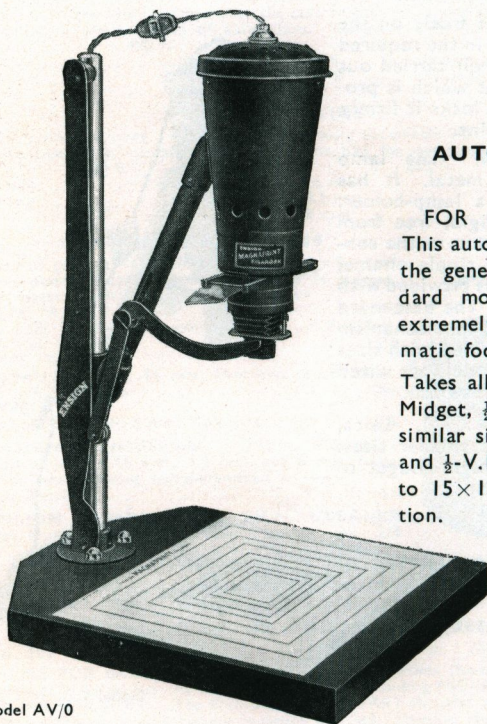
The front is provided with a helicoidal focussing device into which the lens screws. Fine focussing can then be carried out on the lens mount if desired. A suitable carrier for strip film is provided.

Model VO/L For use with Leica lenses (without lens) £5 5 0

Model VO/C For use with Contax lenses (without lens) £5 15 0



Model VO/L



Model AV/O

AUTOMATIC FOCUSING MODEL

FOR MINIATURE NEGATIVES

This automatic focussing model follows the general specification of the standard model, having in addition an extremely effective and simple automatic focussing device.

Takes all miniature negatives—Ensign Midget, $\frac{1}{2}$ -V.P., Leica and Contax and similar sizes. Enlarges Ensign Midget and $\frac{1}{2}$ -V.P. to all sizes from $2\frac{1}{4} \times 3\frac{1}{4}$ in. to 15×12 in.—other sizes in proportion.

Model AV/O with Dallmeyer Enlarging Anastigmat f/4.5 ... £8 15 0

Special carrier for Leica or Contax negatives in strip .. 10/6

Lamps for all above models—Silvalux Opal, 100-watt .. 2/9

ENSIGN MAGNAPRINT

SUPER-SPEED CONDENSER ENLARGERS

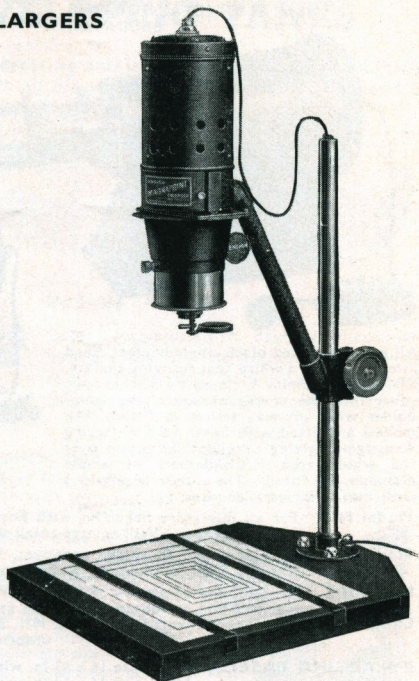
With FRICTION DRIVE RAISING MECHANISM

V/10 For $2\frac{1}{4} \times 2\frac{1}{4}$ (6 × 6 cm.) negatives and smaller.

V/11 For $2\frac{1}{4} \times 3\frac{1}{4}$ (6 × 9 cm.) negatives and smaller.

The body is moved up or down on the standard by a friction drive operated by a large white knob. Fine focussing is then carried out by the helicoidal lens mount which is provided with a large knob which locks it firmly in position at the required point. The scale ranges for $\frac{1}{4}$ -plate up to 15 × 12 size.

Fitted with either the ENSAR f/6.3 or MAGNAR f/4.5 Enlarging Anastigmats with iris diaphragm. Both give excellent definition. The plano convex condensers are mounted to provide for ample expansion, the individual lenses being easily removable for cleaning or replacement. A swivelling orange cap is fitted externally.



FOR $2\frac{1}{4} \times 2\frac{1}{4}$ in. (6 × 6 cm.).

Enlarges $2\frac{1}{4} \times 2\frac{1}{4}$ from $4\frac{1}{4} \times 3\frac{1}{4}$ up to 15 × 12, other sizes in proportion.

V/10 with ENSAR Enlarging Anastigmat f/6.3	£7 15 0
V/10M „ MAGNAR „	„	f/4.5	...	9 10 0

FOR $2\frac{1}{4} \times 3\frac{1}{4}$ in. (6 × 9 cm.).

Enlarges $2\frac{1}{4} \times 3\frac{1}{4}$ in. from P.C. up to 15 × 12 in. Smaller negatives in proportion.

V/11 with ENSAR Enlarging Anastigmat f/6.3	£8 10 0
V/11M „ MAGNAR „	„	„	f/4.5	10 0 0

FOR $3\frac{1}{4} \times 4\frac{1}{4}$ ($\frac{1}{4}$ -plate).

Enlarges $3\frac{1}{4} \times 4\frac{1}{4}$ up to 16 × 20 in., small sizes in proportion. With counter balance mechanism instead of friction drive. Rather different construction. 6-in. condenser.

V/2 with ENSAR Enlarging Anastigmat f/6.3	£12 12 0
---	-----	-----	-----	----------

MODEL AV/11 AUTOMATIC FOCUSING WITH FRICTION DRIVE RAISING MECHANISM

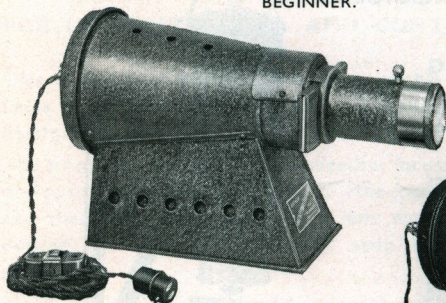
FOR $2\frac{1}{4} \times 3\frac{1}{4}$ (6 × 9 cm.).

Enlarges $2\frac{1}{4} \times 3\frac{1}{4}$ in. up to 15 × 12 in., other sizes in proportion.

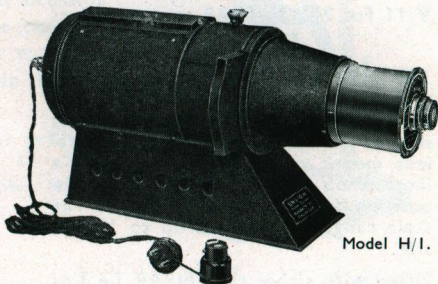
AV/11, with Dallmeyer Anastigmat f/4.5	£12 10 0
Silvalux lamps, 100-watt	2/9
150-watt (for V/2)	4/-

ENSIGN HORIZONTAL MAGNAPRINT

Model H/0. IDEAL FOR THE BEGINNER.



Ensign Horizontal Magnaprint Enlargers are exceptionally fine value, and are capable of giving absolutely first class results in all sizes. Model H/0 is for miniature negatives.



Model H/1.

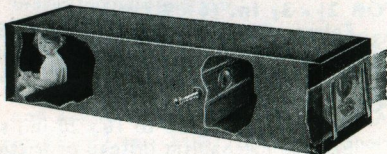
All metal, finished black ripple enamel, lined internally with a white heat resisting surface. The rear extremity is closed by a removable cover into the centre of which the lamp-holder with key-way switch is fitted. All models are fitted with Ensar f/6.3 Enlarging Anastigmat giving excellent definition over the whole area. Condensers of ample diameter are fitted. The carrier is provided with masks for smaller sizes.

- Model H/0.** For all miniature negatives with Ensar f/6.3 Enlarging Anastigmat and 3-in. condenser. Will enlarge to all sizes up to 15×12 £2 17 6
 - Model H/1.** For 3½×2½ and all smaller negatives. With Ensar f/6.3 Enlarging Anastigmat and 4½-in. condenser. Enlarges up to 15×10 5 15 0
 - Model H/2.** For ½-pl. and all smaller negatives. With Ensar f/6.3 Enlarging Anastigmat and 6-in. condenser. Enlarges up to 20×16 7 10 0
- Lamps.** Silvalux opal 100-watt for H/0 and H/1, 2/9; 150-watt for H/2, 4/- . State voltage when ordering.

ENLARGING EASELS.	No. 0 size 16×13 in. with 15×12 in. chart	7/6
	No. 1 size 16×13 in. with pivoted board and stand	12/6
	No. 2 size 16×13 in. with board pivoting on ball and socket head	17/5

ENSIGN DAYLIGHT ENLARGERS

No more difficult to handle than an ordinary printing frame, and the results are incomparably more attractive. There is no focussing. Just put the negative at one end and the bromide paper at the other. Made of seasoned wood, leatherette covered. Holders for negative and bromide paper. Achromatic lens and metal shutter.



No. 1.	For post card enlargements, from 2½ × 1½ in.	negatives	15/-
No. 1a	" " " " half-2½ × 3½ in.	"	15/-
No. 2.	" " " " from 2½ × 3½ in.	"	17/6
No. 3.	" ½-plate " " 3½ × 2½ in.	"	27/6
No. 5.	" 1/1-plate " " 4½ × 3½ in.	"	32/6

SPECIAL MODEL FOR MINIATURE NEGATIVES

A very well made model—perfect in every detail and of the accuracy necessary for the enlarging of miniature pictures. Making 2½×3½ pictures from ENSIGN MIDGET and HALF VEST POCKET is as easy as contact printing. No. 2M. 17/6

JUNIOR MIDGET ENLARGER

A simple Enlarger for making 3½×2½ enlargements from Midget and Half Vest Pocket negatives. Complete with mask 5/6

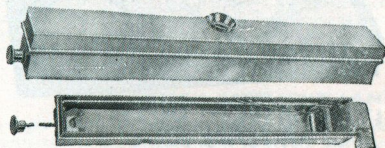
ENSIGN "DO IT YOURSELF" DAYLIGHT DEVELOPING TANKS

Doing your own developing is very interesting and involves no tedious hours in the dark-room. A daylight tank will do it all for you, and if you use High Speed or Panchromatic Film is absolutely essential.

ENSIGN JUNIOR

For the beginner. Metal throughout, with aluminium finish outside, and special anti-sulphuric coating on the inside so as to render the dish impervious to chemical action.

For Size "20" $2\frac{1}{2} \times 3\frac{1}{2}$ roll-films .. 8/6
Developing Powders, packet of 6 .. 1/-



ENSIGN MIDGET DAYLIGHT TANK

Operated completely in daylight without any difficulty and with the certainty of absolutely perfect results. Well made in hard brass heavily nickel-plated. Exceedingly simple to use.

12/6

ENSIGN MIDGET JUNIOR DEVELOPING DISH

Specially designed for the beginner. The Midget film is placed into the dish. The dish is filled with developer and after the daylight cover has been placed in position the work may be finished in the daylight.

Dish .. 1/9 Cover .. 2/9

ENSIGN MIDGET FINE GRAIN DEVELOPER

A specially prepared developer to give the finest possible grain in ENSIGN MIDGET negatives, and each packet can be used for several films Per packet, 3d.

ENSIGN CARBINE SUPER TANK

Enables paper to be removed from film while it is in the tank, and to be withdrawn without difficulty. Entire process in daylight. No risk of "fogging." Operations are automatic and simple to control. Made of nickel silver.

Model 20—for $2\frac{1}{2} \times 3\frac{1}{2}$ in. films 30/-

ENSIGN CARBINE DAYLIGHT TANK

Suitable for all types of film—Every operation in full daylight—No "apron"—No messy container—No changing box required—Absolute simplicity.

	Tank	Developing Powders
	Per pkt.	Box of 6
No. 1 for size 27 films ..	17/6	1/6
No. 2 .. 20 ..	23/6	2/-
No. 3 .. 16 ..	27/6	2/6
No. 4 .. 18 ..	32/6	2/6

ENSIGN KLIMAX TANK FOR PLATES

All operations (except loading) can be carried out in daylight. Six plates may be developed at one time. Brass throughout, with exceptionally fine nickel-plating.

$3\frac{1}{2} \times 2\frac{1}{2}$, 18/6 $4\frac{1}{2} \times 3\frac{1}{2}$, 20/- $5\frac{1}{2} \times 3\frac{1}{2}$, 22/6

Developing Powders—box of 6 1/6

FILM PACK TANK

For the daylight development of a complete film pack. Every operation, except loading, done in daylight. Films loaded separately into carriers. Solid nickel, with loose rack for films.

For $3\frac{1}{2} \times 2\frac{1}{2}$, 24/- $4\frac{1}{2} \times 3\frac{1}{2}$, 25/- $5\frac{1}{2} \times 3\frac{1}{2}$, 27/-
Film pack and print dryer 5/-
Developing Powders—packets of 6; No. 1 .. 1/6 No. 2 .. 2/3 No. 3 .. 3/-



Carbine Tank



Carbine Super Tank

ENSIGN "DO IT YOURSELF" DEVELOPING AND PRINTING OUTFITS

These outfits have been made up to enable the beginner to enjoy the pleasures of developing and printing. No need to look around the home for makeshift utensils. Everything that is needed to produce first-class prints is contained in these outfits.

"ALL-DAYLIGHT" OUTFIT

For $3\frac{1}{4} \times 2\frac{1}{4}$ prints.

Contents:—Ensign Junior Developing Dish, $\frac{1}{4}$ -plate Xylonite Dish, 4 oz. Glass Tumbler Measure, No. 4 C.D.V. Printing Frame, Thermometer, 2 packets Acid Hypo, 4 packets Developer, C.D.V. Negative Print Album. In cardboard box 13/6



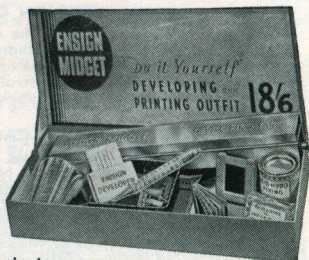
"DO-IT-YOURSELF" OUTFIT

For $3\frac{1}{4} \times 2\frac{1}{4}$ prints.

Contents:—1 oz. bottle "Azol" Developer, Bakelite Developing Dish, Xylonite Fixing Dish, Dark-room Lamp with night light, 4 oz. Tumbler Measure, $3\frac{1}{2} \times 2\frac{1}{2}$ Printing Frame, Floating Thermometer, 4 oz. tin Acid Fixing Powder, Tube Amidol Developer, 3 packets M.Q. Developer. In cardboard box 8/6
In well-made wood cabinet for fixing to wall 15/-

ENSIGN MIDGET DAYLIGHT OUTFIT

For developing and printing Ensign Midget negatives. Contents:—Daylight Developing Tank, 2 Developing Dishes, Printing Frame, Glass Measure, Thermometer, Film Clip, Fine Grain Developer, M.Q. Developer, Hypo, Gaslight and Self-toning Papers, Album and complete instructions 18/6



JUNIOR MIDGET OUTFIT

An outfit for the beginner in Midget photography. The developing dish is particularly simple to use. For developing and printing Midget films. Contents:—Celluloid Developing Dish, Dark-room Lamp, Bakelite Dish, Printing Frame, 4 oz. Measure, Thermometer, 1 packet Fixing, 1 packet M.Q. Developer, 1 packet Fine Grain Developer, Album No. 3012. In attractive storage box with full instructions 8/6

PRINTING OUTFIT

For $3\frac{1}{4} \times 2\frac{1}{4}$ prints.

All that is required for printing. Learn something of the photographic processes by starting with a simple printing outfit, before you proceed to the more intricate processes of developing and enlarging. Contains Printing Frame, Dish, Measure, Fixing Salts of Self-toning and Gaslight Paper and Developer 3/9



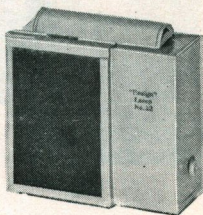
ENSIGN DARK-ROOM LAMPS

For Night Lights—Japanned metal, substantially made and well ventilated. Fitted with removable top, safe ruby glass and night-light.

- No. 1. With glass front, $3\frac{1}{2} \times 2\frac{1}{2}$ in. .. 1/6
 No. 3. With glass front, $5 \times 2\frac{1}{2}$ in. .. 1/9 Night lights, 3d.

For Oil Burning—Metal, enamelled and well ventilated. Removable top.

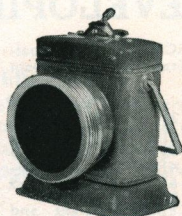
- No. 5. With pick-up burner, and safe glass, $4 \times 2\frac{1}{2}$ in. .. 1/9
 No. 6. With externally operated burner, cowl, adjustable shade and safe glass, $5 \times 4\frac{1}{2}$ in. .. 3/6
 No. 10. As No. 6, ruby glass, $5\frac{1}{2} \times 4\frac{1}{2}$ in., and orange fabric .. 5/-
 No. 12. Gives a safe, reflected light; painted white inside. With oil burner, ruby glass and orange fabric, $6 \times 4\frac{1}{2}$ in. .. 6/-
 Ensign Burning Oil, 6-oz. tins 9d.



No. 12.

SAFELIGHT "PORTABLE"

Operated by a flash-lamp battery. Provided with a ruby ground glass and an orange safelight filter so that its use is by no means limited. A plain glass provided enables the lamp to be used as an ordinary hand lamp 3/9



Safelight "Portable"

ENSIGN SAFELIGHT LAMPS

Strongly made of japanned metal, white enamelled inside and well ventilated. The reflected light is evenly distributed.

WITH 7×5 in. LIGHT FILTER

- No. 18. For gas 11/6
 No. 19. For paraffin oil 11/6
 No. 20. For electric light, with flex and adapter 15/-

WITH 10×8 in. LIGHT FILTER, and removable panels for access to burner.

- No. 21. For gas 27/6
 No. 22. For paraffin oil 27/6
 No. 23. For electric light, with flex and adapter 27/6

ENSIGN ELECTRIC LIGHT COVERS

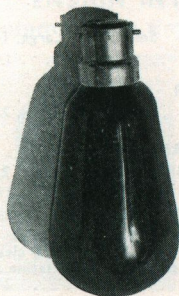
Makes any room a perfect "dark-room" at a moment's notice. For use on any electric point. For loading plates, making prints or developing. Ruby or orange. Small or Large, each 5/-



PHILIPS DARK-ROOM BULBS

These 40-watt lamps will never develop heat. The light given cannot "fog" plates or films. For voltages 100/130 or 200/260. (State voltage).

- Dark Red for orthochromatic material 2/9
 Pale Red for Bromide papers 2/9
 Amber for gaslight papers 2/6
 Dark Green for panchromatic material 2/6

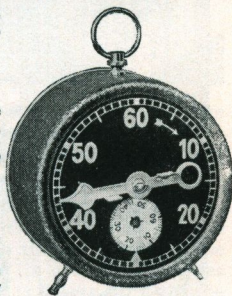


NUBIAN DARK-ROOM CLOCK

Indicates seconds and minutes on separate dials. Clearly defined hands and figures, easily readable in red light. Rings alarm at hour 15/9

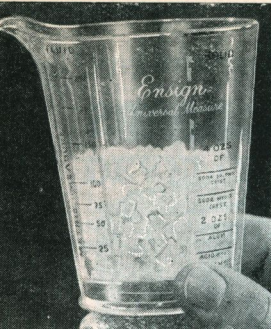
LANDELL DARK-ROOM CLOCK

Indicates seconds and minutes. Fitted with starting and stopping device. Alarm can be set to ring automatically at any given time from half-a-minute upwards. Grey enamelled case with bold clear hands and dial 25/-



Nubian

MEASURES



Ensign Universal

Tumbler shape moulded with foot and lip. With English and Metric fluid graduations, and for bulk chemicals. Holds 10 ozs. .. 2/6

Tumbler. White enamelled graduations, glass.

1 oz.	2 oz.	4 oz.	8 oz.	10 oz.
—	9d.	1/-	1/4	1/6

Everseen. Black Print markings, white top edges.

Conical ..	1/6	1/8	2/-	—
Cylindrical ..	—	1/8	2/-	3/-

Engraved Letter.

Conical ..	1/3	1/6	1/8	2/-	2/3
Cylindrical ..	1/3	1/6	1/8	2/-	2/3

Celluloid.

Tumbler shape	—	2/-	2/6	—	3/6
---------------	---	-----	-----	---	-----

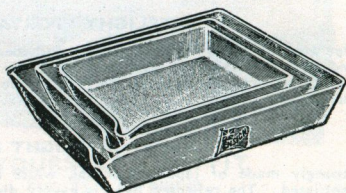
DEVELOPING DISHES

PORCELAIN. Finest quality Staffordshire Porcelain

In.	Semi-deep	Deep
3½ × 2½	1/4	1/5
4½ × 3½	1/8	1/11
5½ × 3½	2/-	2/3
6½ × 4½	2/9	3/-
8½ × 6½	4/3	4/9

XYLONITE. With ribbed bottom and lip.

In.	7d.
4½ × 3½	7d.
5½ × 3½	8d.
6½ × 4½	1/-
8½ × 6½	1/4



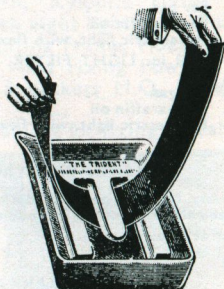
BAKELITE. Light and practically unbreakable. Black or red.

3½ × 2½ in.	..	1/-
½-plate	1/3
Post-card	1/6
¾-plate	2/3
1/1-plate	3/3

ENAMELLED STEEL. Double coated. White enamelled.

4½ × 3½ in.	..	1/8
5½ × 3½ in.	..	2/-
6½ × 4½ in.	..	2/6
8½ × 6½ in.	..	3/3

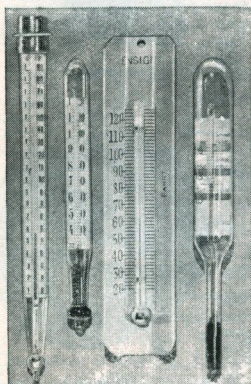
GLASS	
7 × 5 in. 4/6
9 × 7 in. 5/6



TRIDENT DEVELOPING WEIGHT

Facilitates the development of roll films in lengths. Made in porcelain.

- No. 1. Takes films up to 3½ in. wide (without dish) 2/6
 No. 2. Takes films up to 5 in. wide (without dish) 3/-



STIRRING RODS

Ebonite or Stainless Steel,	1/-
Glass	6 in., 3d.	8 in., 4d.	12 in., 5d.
Ebonite Stirring Rod and Tablet Crusher	1/-

FORCEPS

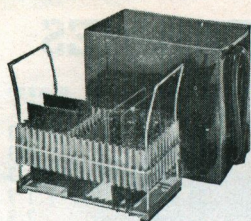
Ebonite or Stainless Steel	Small, 6d.	Large, 1/-
Ebonite Forceps with dish rest 1/9

PRINT LIFTER

Celluloid, Small, 1/-	Ebonite, 2/-
-----------------------	----	----	----	--------------

THERMOMETERS

- No. 1. 5 in. nickel case. Opal scale to 190° Fahr. .. 2/-
 No. 3. Weighted end. 3½ in. long. Up to 130° Fahr. .. 1/6
 No. 2. In nickel frame, engraved from 20° to 130° Fahr. .. 2/6
 No. 4. "Exax." Each temperature point is marked with a coloured strip. This, together with blue spirit, gives a very clear reading in daylight or dark-room. Danger point for gelatine is indicated. For developing and fixing 2/6



No. 1



No. 7



Speed Washer

WASHERS

For Plates. No. 1. Japanned, with syphon and loose zinc rack for 12 plates.
 $3\frac{1}{2} \times 2\frac{1}{2}$ 2/9 $4\frac{1}{4} \times 3\frac{1}{4}$ 3/-
For Prints. No. 7. Round, japanned, white inside.
 $3\frac{1}{2} \times 2\frac{1}{2}$ 6/- $4\frac{1}{4} \times 3\frac{1}{4}$ 7/-

ENSIGN AMATEUR SPEED WASHER

Automatic action. Complete change of water every three minutes. No great pressure of water is required to keep the prints or cards in motion. Connect to tap with hosepipe, turn on water and washer will automatically empty and refill continuously. Made in extra stout zinc, coated with special hard cellulose enamel 12/6
 Hosepipe connection 3/6

AUTO-SPEED PRINT AND POST CARD WASHER

To meet the demands for a washer that will wash large prints in a confined space. Complete change of water every three minutes, therefore a print can be perfectly washed in fifteen minutes.

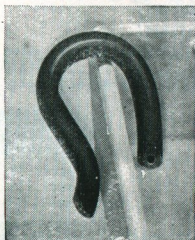
For prints up to 12×10	£1 5 0
" " " 15×12	1 15 0
" " " 20×16	2 0 0
" " " 24×20	2 10 0
Hosepipe connection	4 0

ANTI-SWIRL

A rubber attachment, easily fitted to any standard tap. Prevents splashing, and so is most useful for washing plates and prints 6d.

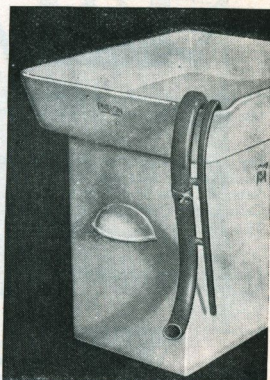
ENSIGN INTERMITTENT SYPHON

Automatically Empties and Refills Tanks and Dishes



Continues to fill and empty a dish or tank so long as the water is allowed to run. Chromium-plated.

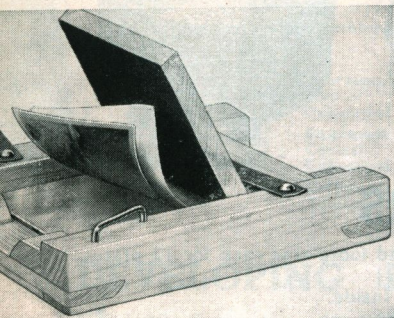
No. 1. For use in dishes 7/6 No. 2. For use in tanks 8/6



ENSIGN SYPHON

Simply hangs over the side of the dish. After priming the water will flow until its level sinks to the small holes. The flow will continue when the water in the dish reaches normal level. The Hypo laden water is drawn off from the bottom. Made of ebonite 6d.

ENSIGN PRINTING FRAMES



No. 4. Wood—for Films (with glass)

In.	(Midget)	In.	In.
$1\frac{5}{8} \times 1\frac{1}{4}$	1/-	$4\frac{1}{4} \times 2\frac{1}{2}$	1/3
$2\frac{1}{2} \times 1\frac{1}{2}$...	$4\frac{1}{4} \times 3\frac{1}{2}$	1/3
$2\frac{1}{4} \times 2\frac{1}{4}$...	$4\frac{7}{8} \times 2\frac{7}{8}$	1/3
3×2	...	$5\frac{1}{8} \times 3\frac{1}{4}$	1/9
$3\frac{1}{4} \times 2\frac{1}{4}$...	5×4	2/3

No. 6. Wood—for Plates

In.	In.	In.	In.
$3\frac{1}{2} \times 2\frac{1}{2}$...	11d.	$5\frac{1}{2} \times 3\frac{1}{2}$... 1/7
$4\frac{1}{4} \times 3\frac{1}{4}$...	1/3	5×4 ... 2/3
		$6\frac{1}{2} \times 4\frac{3}{4}$... 2/3

Metal—for Plates or Films (with glass)

In.	In.	In.	In.
$4\frac{1}{4} \times 3\frac{1}{4}$...	1/3	$5\frac{1}{2} \times 3\frac{1}{2}$... 1/6

PRINTING MASKS

"SEE-THRU" PRINTING MASKS

Transparent orange celluloid giving crisp masking of prints. Rectangular, oval and rectangular with cushion corners.

Prices per packet of each size:

Up to and including $3\frac{1}{2} \times 2\frac{1}{2}$ in.	..	Set of 3	6d.
Up to and including $\frac{1}{2}$ -plate and $4\frac{1}{2} \times 2\frac{1}{2}$ in.	9d.
Up to and including post card and 5×4 in.	10d.
Up to and including $\frac{1}{2}$ -plate	1/6

OPAQUE MASKS

Clean cut, square, circular and oval openings. In packets of 25.

Up to 5×4 in., per packet of each size, 6d. $\frac{1}{2}$ -plate 1/-

VIGNETTERS

For adding vignettes to snapshots. Delicately graduated. Fixed outside or inside frame. Flexible unbreakable material.

Sets of 3 oval or 3 pear openings.

Celluloid. Delicately graduated, pear or oval. Singles. $4\frac{1}{2} \times 3\frac{1}{2}$ in. 2/3 $5\frac{1}{2} \times 3\frac{1}{2}$ in. 3/- $6\frac{1}{2} \times 4\frac{3}{4}$ in. 4/-

$3\frac{1}{2} \times 2\frac{1}{2}$ in. 6d. $4\frac{1}{2} \times 2\frac{1}{2}$ in. 9d. $4\frac{1}{2} \times 3\frac{1}{2}$ in. 9d. $5\frac{1}{2} \times 3\frac{1}{2}$ in. 1/- $6\frac{1}{2} \times 4\frac{3}{4}$ in. 1/6

CELLULOID CLOUD NEGATIVES

Improves the appearance and pictorial value of prints. Assorted designs of clouds.

$3\frac{1}{2} \times 2\frac{1}{2}$ in. .. 1/- $4\frac{1}{2} \times 3\frac{1}{2}$ in. .. 1/3 $5\frac{1}{2} \times 3\frac{1}{2}$ in. .. 1/6 $6\frac{1}{2} \times 4\frac{3}{4}$ in. .. 2/-

HOLBORN CHEMICAL BALANCE

A strongly made balance, fitted with special deep pan, and clearly engraved scale.

No. 1. Up to 2 oz. 3/9

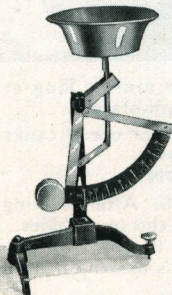
No. 2. Up to 4 oz. 5/6

ENSIGN SCALES

No. 12a. Nickel-plated, with large loose nickel pan and oak base, with set of weights for weighing up to 12 oz. 16/6

No.	Beam	Pans
1	6 in.	Brass 7/-
2	8 in.	Brass 12/-
3	6 in.	Glass 9/-
4	8 in.	Glass 15/-
6 .. Pillar pattern	6 in.	Brass 9/6

Set of grain and dram Weights 1/6





PRINT DRYING and GLAZING PRESS

Dries glossy, semi-matt and matt prints and enlargements. For glossy finish the prints are squeegeed on to Ferrotypes. For drying only, the prints are placed on to the non-rusting metal top which is curved to counteract the curling of the prints. A linen cover keeps the prints in position. Strongly made of metal. Complete with Ferrotype plate, flex and lamp holders (lamps extra). Two 60 watt ordinary lighting lamps may be used.

21/-

Ferrotype plates, 9×7 in.
Chromium plates, 9×7 in.

6d. each
3/- each

GLAZING PLATES

Chromium. First-class plating, prints will not stick. With rounded corners and holes for hanging. Size 14×10 in. ... each 5/3

Ferrotype. Imperial, 14×10 in. each 11d. Thick, each 1/-. A.I. quality, each 1/9

ENSIGN PRINT GLAZERS. No. 1, 10×8 in., 1/1- No. 2, 12×10 in., 1/6

KLITO PRINT GLAZERS

Require no preparation with chalk. Prints fall off when thoroughly dry.

No. 1, 10×8 in., 3/6 No. 2, 12×10 in., 4/6

ELECTRIC HANDIDRIER

A simple and economical method of drying films and prints. Placed on the floor or on a shelf; the films, prints, etc., are suspended above. The gentle heat causes sufficient warm air to rise to dry the films or prints without damage. The drier consumes very little current (approximately 1 unit) during 7 hours continuous use. Quite portable and can be put to many other uses. Complete with two yards of three-core cable.

8/3



FILM SQUEEGEE

To speed up the drying time of roll films. The chamois is soaked for a few minutes. The film is inserted between the two prongs and drawn through when the surplus water is removed. Soundly made of black ebonite

1/9



FLAT SQUEEGEES

Stout grey rubber and wood handle.

4 in., 1/3

6 in., 1/9

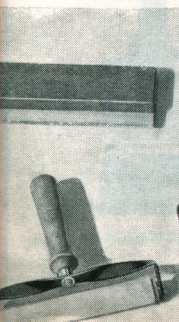
8 in., 2/2

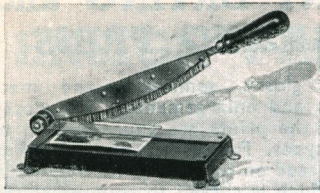
12 in., 3/-

ROLLER SQUEEGEES

No. 1. Cast-metal frame, polished wood handle and roller with grey rubber covering ... 4 in., 1/5; 6 in., 1/11

No. 2. Cast-metal frame, polished wood handle and rollers with non-perishable red rubber covering ... 4 in., 2/2; 6 in., 3/-





PRINT TRIMMERS

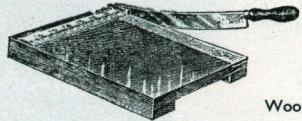
Deckle-Edge

Metal throughout. Cutting knife has serrated cast edge which produces the deckle edge on print. Fitted with transparent cutting gauge and polished wood handle. 5½ in. 9/6

Deckle

Wood

Polished hardwood, with graduated rule. Sheffield steel blade gives a clean-cut edge. 5 in. ... 6/6 7 in. ... 8/6 9 in. ... 12/-



Wood

Metal

With a 6-in. cutting edge. The table has a transparent celluloid holding strip so that trimming prints with equal white margins becomes a simple matter 5/6

Jay-Nay

No. 2. A popular priced but efficient trimmer. 5 in. ... 3/6 7 in. ... 5/-

ZIPPA



Zippa

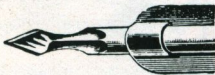
Print trimmer, mount cutter, erasing knife and scraper. Can be held at any angle by adjusting milled head screw. Uses standard Gillette pattern razor blades. Steel, oxidised finish, with detachable protector for blade ... 1/6



No. 1

TRIMMING KNIVES

No. 1.—Single blade, polished handle ... 1/-
 No. 2.—Spear-head, with double edge and turned handle ... 1/6
 No. 3.—Double-edge knife with spear-point and ebonised handle. A favourite ... 2/-
 No. 4.—Swivel cutter for ovals and circles 2/-
 Extra wheels ... each 6d.



Pen Nib

PEN NIB

For trimming or retouching. Used in holder supplied or any ordinary pen-holder. 20 with holder 1/6



No. 5 (actual size)

No. 5.—Pen nib trimmer and retouching blade (box of 12) ... 1/-

HOLBORN EXACT TRIMMER

A useful means of utilising old Gillette type razor blades. The trimmer is laid upon a ruler, pressed down and drawn along, when a clean cut results ... 1/6

Mounting.

Scub. Stiff hog hair, short handle

No. 110, Black bristles, wood handle, ½ in. 7d., 1 in. 1/-, 1½ in. 1/3

Spotting.

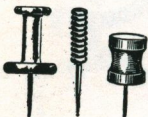
Ordinary quality	00	0	1	2	3	4	5	6
Best quality, Pure Sable	5d.	5d.	5d.	6d.	7d.	8d.	10d.	1/-
	8d.	8d.	9d.	10d.	11d.	1/2	1/4	1/8

BRUSHES

DARK ROOM PINS

Per doz.

MASCOT. Glass heads and needle points 9d.
 PRIMUS. Coiled wire heads and needle points ... 1/-
 ENSIGN. Unbreakable Erinoid, assorted colours small 1/-: large 1/3
 HOLBORN. Aluminium top, needle points 1/-
 In boxes of 72, assorted colours ... 6/-



SEE YOUR NEGATIVES CRYSTAL CLEAR

stored in the

ENSIGN CELLOFILE NEGATIVE ALBUM



Enables the negatives to be distinguished and examined in detail without the least difficulty—as if there were no covering whatever to them. In stout cover with snap-button fastener, and secured by two easily removable metal binding pillars. Numbered index. Holds 100 negatives.

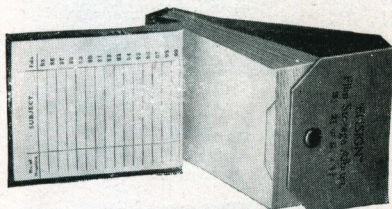
No. 20. For $2\frac{1}{2} \times 3\frac{1}{4}$ negatives 3/-
No. 21. „ $2\frac{1}{2} \times 4\frac{1}{4}$ „ 3/6

No. 22. For $4\frac{1}{4} \times 3\frac{1}{4}$ negatives 3/6
No. 23. „ $5\frac{1}{2} \times 3\frac{1}{2}$ (P.C.) 5/-

ENSIGN FILM STORAGE ALBUMS

Contains 100 numbered transparent envelopes and index, bound by loose-leaf binder into stout art linen covers. Each envelope is interchangeable and removable.

No. 15. For $3\frac{1}{4} \times 2\frac{1}{4}$ in. or V.P. negs. 2/6.



NEGATIVE PLATE BOXES

Made in polished pine with combed corners; 50 hardwood grooves and index.

$3\frac{1}{2} \times 2\frac{1}{2}$, 5/6. $4\frac{1}{4} \times 3\frac{1}{4}$, 6/-. $6\frac{1}{2} \times 4\frac{3}{4}$, 8/-

EXPRESS NEGATIVE BOXES

For plates or films, strong outer case covered grain paper with drawer, 50 printed envelopes.

$3\frac{1}{2} \times 2\frac{1}{2}$ in., 3/- $4\frac{1}{4} \times 3\frac{1}{4}$ in., 3/6

ENSIGN PRINT CLIPS

“SPIKIT” Film Clip

Two prongs pierce the film, which is held away from the clip by the conical prong in a recessed hole. The ends of the film are completely exposed on both sides, and dry as quickly as the rest of the film.

SINGLE. Standard hard brass plated ... 8d.
Incorrodible Monel metal 1/-

“SPIKIT” Weight Clip ... 10d.



“Spike”

FILM and PRINT Clip

Nickelled metal. 1 in., 2d. $2\frac{1}{2}$ in., 6d. 4 in., 10d.

WOOD CLIP

Hardwood, with metal spring ... per doz. $4\frac{1}{2}$ d.

HOOK CLIP

For films or prints. Practically rustproof ... 3d.

LOCKLIP CLIP

Metal. Grips tightly and releases easily ... 2d.

PHOTO-PRINT CLIP

A neat little metal clip for hanging films, prints, etc. Box of 12, 1/-

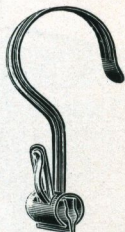


Photo-Print
Actual size

ENSIGN

"Paste-on" ALBUMS

THE ELMHURST

Fine quality stout flexible art covers. 16 stout flexible hinged loose leaves to match, tied with silk cord.

Style I. Brown.

Style II. Grey.

THE NUBIAN

As Elmhurst, but black leaves and cover.

Elmhurst	Numbian	Size	
No. 492.	No. 1470	8 × 6½	1/3
No. 493.	No. 1471	9½ × 8	1/6
No. 494.	No. 1472	12 × 10	2/-

THE VELNAP

Covered with the new Dunlop Alanap, a velvet rubber material closely resembling suede. 18 leaves securely bound in, and open perfectly flat.

Style I. Brown. Style II. Grey.
No. 3090. Page size 9½ × 8 in. ... 2/6

THE SELFIX

The leaves are "wired-in" in an entirely novel way, which ensures that the album will lie perfectly flat when open. 20 stout rich black art leaves. Covers are extra stout and are faced with bright black reeded rexine.

No. 3088. Size 10 × 8 in. ... 3/6
No. 3089. Size 12 × 10 in. ... 5/-

THE GARRICK

Choice of 5 colours. Most luxurious in appearance. Full bound, with padded covers of extra stout material. 25 detachable grey leaves mounted on to coin posts with heavy deep flanges so that nothing protrudes on the cover. Colours—GREY, BROWN, GREEN, BLUE, RED.

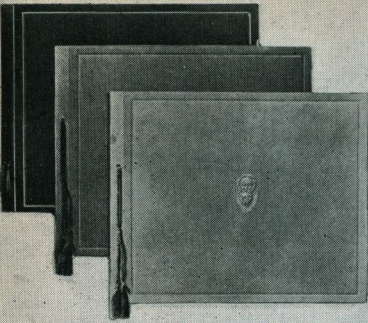
No. 3098. Size 10 × 8 in. ... 5/-
No. 3099. Size 12 × 10 in. ... 7/6

Complete with coloured gift box.

THE GLENAVON

Stout hard-wearing covers. Binding of black art cloth, full bound. Dark grey leaves built into covers on nickelled coin posts to hold 60 leaves. Will expand to add 36 additional leaves. No. 3065. Size 10 × 7½, 60 leaves ... 6/6

Extra leaves, per dozen, 9d.



ELMHURST AND NUBIAN



VELNAP



SELFIX



GARRICK

ENSIGN

"Slip-in" ALBUMS

THE GLENJO

A PATENT ALBUM MADE ON AN ENTIRELY NEW PRINCIPLE

The prints slide easily into specially constructed grooved slits on the top of the leaves, and yet are securely held in place. Can be converted into a paste-on album, if desired. Contains 20 double-over pages, each for four $3\frac{1}{2} \times 2\frac{1}{2}$ prints. Stout silver granular cover, bound with silk cord and tassels.

No. 3096. For 80 $3\frac{1}{2} \times 2\frac{1}{2}$ prints ... 2/6

THE GRANITE

Strongly bound in granite marble-relief enamel cover. 8 leaves each with upright and oblong openings with an art printed picture border.

Style 1. Brown leaves. Style 2. Grey leaves.

No. 3025. For 80 $3\frac{1}{2} \times 2\frac{1}{2}$ prints ... 2/6

THE ADEN

Binding of specially selected black cloth, full bound. The leaves are of a matt black art paper, with cutter-crushed matt white surrounds to the openings. Four on a page.

No. 3030. For 72 $3\frac{1}{2} \times 2\frac{1}{2}$ prints ... 3/6

THE GOLIATH

A large capacity Album at a low price. Bound on stout boards covered in embossed antique leather cloth. Slip-in openings, spaced upright and oblong. Five on a page.

Style 1. Brown. Style 2. Grey.

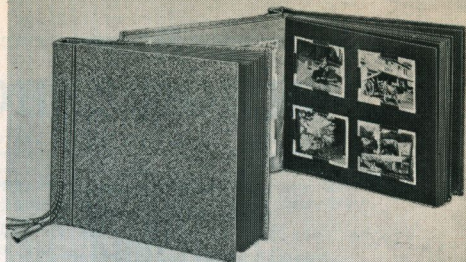
No. 3050. For 200 $3\frac{1}{2} \times 2\frac{1}{2}$ prints ... 3/6

THE GLENCOE

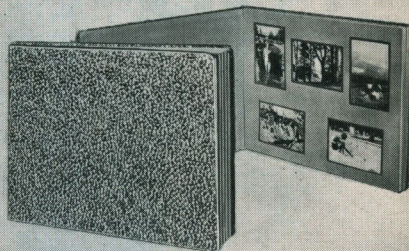
Black art cloth full bound. Dark grey leaves. Five openings on page for upright and oblong photographs. Is of expanding type built into cover on nickel coin posts and holds 14 leaves, expanding to add 6 additional leaves if desired.

No. 3060. For 140 $3\frac{1}{2} \times 2\frac{1}{2}$ prints ... 6/6

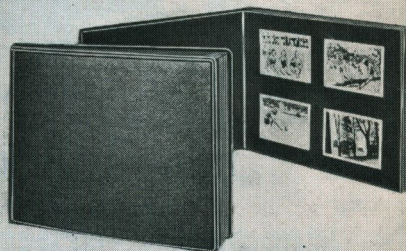
Extra leaves per dozen 3/9



GLENJO



GRANITE



ADEN



GLENCOE

ENSIGN "PHOTO LIBRARY"

"For a place on your bookshelf!"

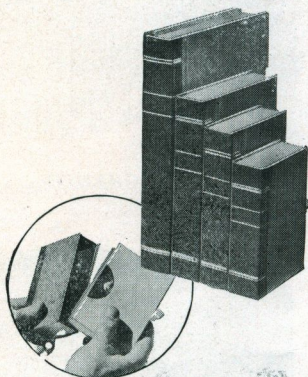
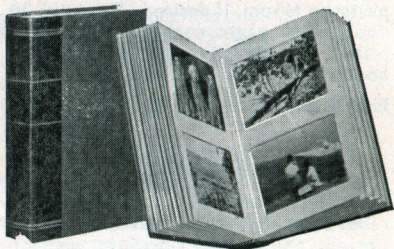


A NEW IDEA IN ALBUMS

A good photograph is comparable to a good book, and should be looked after accordingly. Strongly bound in tasteful brown, the "Photo-Library" Album resembles a book. It will stand on the bookshelf and not look out of place with the volumes already there.

SLIP-IN. For 100
3½ × 2¼ prints, two
on a page.
No. 3085 .. 2/6

PASTE-ON. 72
pages, for 3½ × 2¼
and all sizes up to
Post card.
No. 3086 .. 3/6



BOOK BOXES

Strongly bound in tasteful brown, they stand on the bookshelf and harmonise with the volumes already there. Each takes 100 pictures.

- | | | | |
|--------|----------------------|-----|-----|
| No. 0. | All sizes to 3¼ × 2¼ | ... | 1/- |
| No. 1. | Postcard 5½ × 3½ | ... | 1/3 |
| No. 2. | ½-Plate 6½ × 4¾ | ... | 1/6 |
| No. 3. | 1/1-Plate 8½ × 6½ | ... | 1/9 |

ENSIGN POCKET

THE GRIPSNAP

This neat album has 16 stub adhesive leaves, to which the prints are affixed. Thus, the prints can be shown with the greatest ease—simply by a flick of the finger. Blue Rexine cover, with glove-snap fastener. Takes all sizes up to 3½ × 2¼. No. 3097. For 16 prints 6d.

THE GREDNA

A slip-in Album. Takes 32 3¼ × 2¼ prints. Grey leaves, with slots for prints. Printed surround. Art cover.

No. 3075. For 32 3¼ × 2¼ prints 3d.

ALBUMS



THE GRAPHIC

A neat slip-in album, with leatherette cover. Takes 16 3¼ × 2¼ prints. Grey leaves finished off with printed surround.

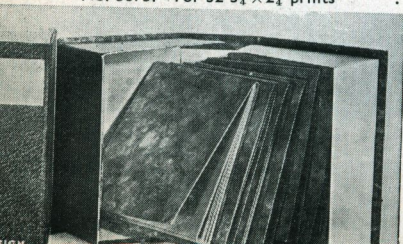
No. 3095. For 16 3¼ × 2¼ prints 6d.

ENSIGN PRINT-NEG ALBUM

A very practical idea for storing miniature pictures and negatives together. The negative is held in a pocket behind the print, and is easily located and preserved for further use.

For Ensign Midget, ½ V.P., Leica and all smaller negatives. Each Album takes 6 Prints and Negatives.

No. 3012. Book Box with 6 Prairie Card cover albums 1/-
No. 3013. Book Box with 6 Leatherette cover albums 2/-





NUACE

THE ORIGINAL AND BEST MOUNTING CORNERS

There are no slots or slits. A NUACE corner is secured to each corner of the print by turning the corners and damping them. You then moisten the four corners of print and gently press into album. **Standard Width.** In Sepia, Grey, White, Black, Silver, Gilt, Red, Green.

Packet of 100 corners (gilt and silver 60 only) 6d.

TRANSPARENT NUACE CORNERS

The whole surface of the picture mounted always at view. Can also be used for newspaper cuttings, postage stamps or Air Mail covers.

Per packet of 80 corners 6d.

ENSIGN MOUNTING STAMPS

A clean and quick method of print mounting. A stamp damped on one side is placed in each corner at back of print, then the other side of stamp is damped and pressed into contact of album or mount. The adhesive used will secure thin or thick paper or card perfectly flat.

Pad of 324 perforated stamps 3d.

"CLUB" PHOTOGRAPHER MOUNTINGS

FOR ENLARGEMENTS AND EXHIBITION PICTURES.

Flexible linen-faced mounts in the standard sizes accepted by exhibition committees.

Style I. Size	Front Fawn	Back Cream	Per pkt. of 12	Style II Size	Front Grey	Back White	Per pkt. of 12
10 x 8			1/6	20 x 15½			5/6
12 x 10			2/-	24 x 19			10/-
15 x 12			3/-				

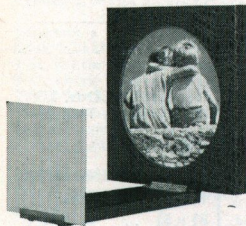
ENSIGN "ECONOMIC" FLEXIBLE MOUNTING PADS

A series of art boards made up into perforated pads—convenient for use and containing 12 assorted sheets (4 black, 4 cream, 4 white). Also available in cream or white only.

Style A—Assorted	Style B—Cream	Style C—White
No. 1. Size 10 x 8	1/-
No. 2. ,, 12 x 10	1/6
No. 3. ,, 15 x 12	2/-

THE SNAPSCOPE

For viewing snapshots. Gives an enlarged and stereoscopic rendering. Wood base, with mirror and spring holder for prints .. 3/6



FRAME YOUR PICTURES QUICKLY AND ARTISTICALLY WITH ENSIGN PASSE-PARTOUT FRAMES

THE ARTIST

The dustproof self-sealing back is a feature. All sizes are fitted with leather board strut and silk hanger. Style I.—Black binding, white mount. Style III.—Oak binding, cream mount.

For Prints	No.	No.	1/6
Post card	6320 upright	6321 oblong	1/6
½-plate	6328	6329	1/6
1/1-plate	6330	6331	2/6

A Strikingly Modern Frame— THE SILVER REGAL

Bound in artistic dull silver. Most luxurious appearance.

6720	Post card, upright	1/6
6721	Post card, oblong	1/6
6728	½-plate, upright	1/6
6729	½-plate, oblong	1/6

SILVER "KWICKMOUNT" SERIES

Bound in artistic dull silver. No. 6851, 3¼ x 2¼, 4½d. No. 6853, Postcard, 6½d. No. 6853a, ½-plate, 10½d.

Ask to see other patterns of Ensign Passe-Partout Frames



PLATES PAPER POST CARDS FLAT CUT FILMS



DRY PLATES AND FLAT CUT FILMS

DRY PLATES :—Barnet, Ilford, Imperial. FLAT FILMS :—Barnet, Ilford, Agfa. All 12 exposures.

Size	Except Panchromatic		Panchromatic	Backing Extra	Flat Films	
	1/2-dozen	1 doz.			Ortho	Panchromatic
Inches						
2 1/4 x 1 1/2	—	1/4	1/6	1 doz. 4d.	1 doz. 1/4	1/6
3 1/4 x 2 1/4	11d.	1/8	1/10	4d.	1/8	1/10
4 1/4 x 3 1/4	1/4	2/6	2/9	4d.	2/6	2/9
5 x 4	2/2	4/2	4/6	6d.	4/2	4/6
5 1/2 x 3 3/4	2/2	4/2	4/6	4/2	4/2	4/6
6 1/2 x 4 1/2	2/10	5/6	6/-	9d.	5/6	6/-

Prices of other sizes on application.

LANTERN PLATES

STANDARD. 3 1/2 x 3 1/2 in. size: Barnet, Ilford Doz. 2/3
 45 x 107 mm. size: Barnet, Ilford Thin 1/8 Extra Thin 2/-

GASLIGHT AND BROMIDE PAPERS

BROMIDE: Barnet, Ilford, Illingworth. GASLIGHT:—Bar-gas, Selo.

Inches	Sheets		Inches	Sheets		Inches	Sheets	
2 1/2 x 1 1/2	.. 22	6d.	4 1/2 x 3 1/2	.. 8	6d.	8 1/2 x 6 1/2	.. 6	1/4
3 1/2 x 2 1/2	.. 12	6d.		.. 17	1/-	10 x 8	.. 12	3/8
	.. 26	1/-	5 1/2 x 3 1/2	.. 12		12 x 10	.. 6	2/10
4 1/2 x 2 1/2	.. 8	6d.	6 1/2 x 4 1/2	.. 7	1/-	15 x 12	.. 6	4/3
	.. 17	1/-						

SELF-TONING PAPERS

Seltona, Gevaert, Enitone Up to 1/4-pl. 6d. and 1/- packets
 5 1/2 x 3 1/2 and over 1/- packets

P.O.P. (PRINTING OUT) PAPERS

Barnet, Ilford. Up to 1/4-pl. 6d. and 1/- packets. 5 1/2 x 3 1/2 and over, 1/- packets.

POST CARDS 5 1/2 x 3 1/2 in. size
 BROMIDE :—Barnet, Ilford, Illingworth, Gevaert (9 cards).

GASLIGHT :—Barnet, Selo, Gevaert (9 cards).

SELF-TONING :—Illingworth, Wellington, Gevaert (8 cards).

P.O.P. :—Barnet, Ilford, Gevaert (10 cards).

1/- per packet.



JOHNSON'S CHEMICALS

Johnson's Fine Grain Developer
For developing miniature films, where the utmost fineness of grain is required. Tins to make 20 oz. 1/-

Superfine Grain Developer
Contains Meritol, a new developer which possesses exceptional advantages for the production of negatives with the finest possible grain. In tins—2 oz. 2/- 4 oz. 3/6

Meritol
1 oz. bottle 4/6

M.Q. Developer
In tins 2/3

Azol—The Correct Developer
A concentrated liquid. Has simple, accurate time and temperature tables. Requires the addition of water only. 3 oz. bottle to make 75 oz. .. 2/-
8 oz. 4/-

Johnson's Scaloids
Compressed Tablets. Easily dissolved. Vedol, Amidol, Gaslight, Hydroquinone, Metol-Quinol, Metol, Pyro, Metol, or Pyro-Soda 1/6
Gold Toning and Fixing or Intensifier (re-developer) 2/-
Reducers, Hypo Fixing or Acid Fixing .. 1/-

Johnson's Developer
ONE SOLUTION, for Plates, Films, and Papers. 4 oz. bottle to make 28 oz. .. 1/-
8 oz. bottle to make 56 oz. .. 1/6
TWO-SOLUTION. In bottles, Pyro-Soda, Metol-Quinol, Pyro-Metol, Hydroquinone. In 2 oz. pairs making 1 pint .. 1/6
In 4 oz. pairs making 2 pints .. 2/6

"Contrast" Developer
Quick acting for brilliancy in negatives and prints. 8 oz. 1/6
20 oz. 3/-

Johnson's Gaslight Paper Developer
4 oz. bottle to make 10 to 20 oz. .. 10½d.
8 oz. bottle to make 20 to 40 oz. .. 1/3

Johnson's Packets, Developers, etc.
Amidol (4 to 10 oz.) 6 packets .. 2/-
Metol-Quinol (10 oz.), Hydroquinone (8 oz.), Gaslight (6 oz.), Pyro-Metol (4 oz.), Pyro-Soda (8 oz.), or Gold Toning and Fixing (4 oz.). 6 packets 1/6

Johnson's Mountant
Free from acid and spreads evenly. Tubes each 6d.
Jars .. 4 oz., 1/-; 10 oz., 1/9; 24 oz., 3/-

Sundry Solutions
Gold Toning and Fixing .. 4 oz. 1/-; 10 oz. 2/-
Intensifier uranium .. 3 oz. 1/-; 6 oz. 2/-
Intensifier redeveloper .. Two 4 oz. bottles 2/-
Reducer .. 4 oz. 1/-; 8 oz. 2/-
Matt varnish .. 2 oz. 1/3; 4 oz. 2/6
Negative varnish .. 2 oz. 1/3; 4 oz. 2/6
Dead black .. 2 oz. 1/-; 4 oz. 2/-



White ink per bottle, 6d. and 1/-
Retouching medium 1 oz. 1/-
Spotting medium 1 oz. 1/-
Black waterproof titling ink .. 1 oz. 1/-
Griffith's anti-sulphuric enamel for coating dishes, etc. No. 6 Black ½ pint 2/6; 1 pint 4/6
Bate's Dead Black 1/-

Ensign Concentrated Tank Developing, see page 49

Metol-Johnson's*
Can be used as a single developer or with Hydroquinone or Pyro. 10 gramme, 1/3; 1 oz., 2/3; 4 oz., 5/3

Hydroquinone-Johnson's*
Splendid for lantern plates. With Metol-Johnson's, it makes developer for plates and papers. 1 oz. .. 1/3 4 oz. .. 3/-

Acid Pyrogallic-Johnson's*
(Pure Crystals) .. 1 oz., 1/10; 4 oz., 4/6

Amidol-Johnson's*
The ideal developer for Bromide paper. 10 gramme, 1/-; 1 oz., 2/-; 4 oz., 5/-

Toning Pactums
Blue, Green, Red or Sepia .. per pkt. 6d.

Septon Toner
One solution, direct toning, no bleaching. 1 oz. bottle .. 1/6 10 oz. bottle .. 6/-

Sepia (Two Solution) Toner
For rich permanent browns, each 1/3 and 2/6

*Prices subject to market fluctuations.

Ensign Glazing Solution
Gives a brilliant gloss to prints without sticking. 10 oz. .. 1/3 20 oz. .. 2/-

Acid-Hypo Fixing
Rapid in its action and not excessively acid. For Plates, Films, and Papers, except Self-toning or P.O.P. 4 oz. .. 7d. 8 oz. .. 10d. 16 oz. .. 1/6

Soda Hyposulphate
Finest selected pea crystals, 1 lb. cartons, 6d.

Snowheart Hypo Eliminator
(C. Winthrope Somerville's Formula). Eliminates hypo from negatives or prints in three minutes. Each packet is sufficient for 36 ¼-plates. 1 packet .. 3d. 12 packets .. 2/9

INDEX

CAMERAS		Page	Page
All-Distance Twenty ..	7	Editors	43
Autorange-20 ..	17-20	Film Cement	44
Autorange-220 ..	21-22	Film Cleaner	44
Double-8	26	Films	44
E20	7	Humitins, etc. ..	44
Midget	23-25	Projector Service Kit ..	44
Multex II	27-30	Projectors	42
Pocket Twenty	8	Reels	44
Selfix 20	10-12	Screens	44
Selfix 220	13-16	Splicers	43
Zeca-Flex	31-32	Tripod	43
CAMERA ACCESSORIES		MAGNAPRINT ENLARGERS	
"Autotimer"	38	For Miniature Negatives ..	45
Ball and Socket Heads ..	38	For use with Leica and Contax Lenses ..	46
Camera Cases	34	Automatic Focussing Model for Miniature Negatives	46
Camera Steadiers	37	For 2½ × 2½ in. Negatives ..	47
Camera Supports	38	For 2½ × 3½ in. Negatives ..	47
Colour Filters	16, 33	Automatic Focussing Model for 2½ × 3½ in. Negatives	47
Distance Meters and Gauges	36	For 3½ × 4½ in. Negatives ..	47
Exposure Meters	35	Horizontal Enlargers	48
Exposure Reckoner	36	Daylight Enlargers	48
Lens Cleaners	34	"Midget" Enlargers	48
Lens Hoods	33	PHOTOGRAPHIC SUNDRIES	
"Multipod"	38	Albums	57-60
Range Finder	36	Balances	54
Roll Film Holders	36	Book Boxes	60
Shutter Releases	38	Bromide Paper	62
Sky Filters	33	Brushes	56
Supplementary Lens	33	Burning Oil	51
Tripod Cycle Clips	38	Chemicals	63
Tripods, etc.	37	Chromium Plates	55
Unipod	37	Clips	57
View Finders	34	Cloud Negatives	54
View Finder Magnifier ..	34	Cut Films	62
View Finder Shades	34	Dark Room Clocks	51
INDOOR PHOTOGRAPHY		Dark Room Lamps, etc. ..	51
Flashbulb Outfits	39	Dark Room Pins	56
Flashbulbs	39	Developers	63
Flashlamps	39	Developing and Printing Outfits	50
Flash Powder	39	Drying and Glazing Press	55
Flash Sticks	39	Developing Tanks, etc. ..	49
Floodlamps	39	Developing Dishes	52
Multiflood Outfits	39	Developing Weight	52
Synchro-Flash Outfits ..	39	Electric Light Covers ..	51
ENSIGN 16 mm. HOME CINES		Ferrotypes Plates	55
Accessories	43-44	Film Packs	57
Animator and Titler	44	Inside Back Cover	
Cameras	40-41	Film Storage Albums	57
		Films	57
		Inside Back Cover	
		Film Packs	62
		Forceps	52
		Frames	61
		Gaslight Paper	62
		Glazers	55
		Glazing Plates	55
		Glazing Press	55
		Handidrier	55
		Hypo, etc.	63
		Lantern Plates	62
		Masks	54
		Measures	52
		Mounting Corners	61
		Mounting Pads	61
		Mounting Stamps	61
		Mounts	61
		Negative Albums and Boxes	57
		NuAce Corners	61
		Papers	62
		Passé-Partout Frames, etc.	61
		Paste-on Albums	58
		Photo-Library Albums and Book Boxes	60
		Pins	56
		Plates	62
		Pocket Albums	60
		P.O.P.	62
		Post cards	62
		Print Clips	57
		Printing and Developing Outfits	50
		Print Drying and Glazing Press	55
		Print Glazers	55
		Print Lifter	52
		Print-Neg. Album	60
		Printing Frames	54
		Printing Masks	54
		Safelight Lamps	51
		Self-Toning Paper	62
		Scales	54
		Slip-in Albums	59
		Snapscope	61
		Solutions	63
		Squeegees	55
		Stirring Rods	52
		Syphons	53
		Tanks	49
		Thermometers	52
		Trimmers	56
		Viewer	61
		Vignettters	54
		Washers	53

ENSIGN FILMS

POPULAR SIZES (8 exposures)

For Cameras	Size of Picture Inches	Ensign Ortho. 27° Sch.		Ensign Ultrachrome 29° Sch.		Ensign Fine Grain Panchro. 29° Sch.	
		Film No.	Price	Film No.	Price	Film No.	Price
Ensign Midget ... (6 exp.)	1½ × 1½	E10	6j.	EC10	7d.	EFPI0	9d.
Ensign Multex, Double-8, Vest Pocket Brownie No. 0, Vest Pocket Kodak	1½ × 2½	E27	1/-	EC27	1/2	EFP27	1/6
All Ensigns 2½B; Ensign-E20; All- Distance; Pocket-20; Selfix-20 and 220; Autorange-20 and 220; Auto- speed; Film Reflex; J.B.; Cupid; Carbines 3, 4, 5, 6 and 7 Brownies, No. 2. Kodaks, No. 1	2½ × 3½	E20	1/-	EC20	1/2	EFP20	1/6
"620" Kodaks and Brownies ...	2½ × 3½	E62	1/-	EC62	1/2	EFP62	1/6
All Ensigns 2½ Ensign Carbine, Nos. 10, 12 and 14 Brownies, No. 2A—Kodaks, No. 1A	2½ × 4½	E16	1/3	EC16	1/6	EFPI6	1/9

OTHER SIZES (6 exposures)

Ensign "E29"	2 × 3	E29	10d.	EC/29	1/-	—
Ensignette No. 2 ...	—	—	—	—	—	—
Ensignette No. 1 ...	1½ × 2½	E28	10d.	—	—	—
Ensignette Junior 2½ ... (7 exp.)	2½ × 3½	—	1/-	—	—	—
Pocket Kodak ... (12 exp.)	1½ × 2	E02	1/3	—	—	—
F.P.K. No. 0 ...	1½ × 2½	E21	10d.	—	—	—
Box Ensign 2½A. Brownie No. 1	2½ × 2½	E17	10d.	—	—	—
F.P.K. No. 1 ...	2½ × 3½	E05	1/-	—	—	—
Ensign 2½, Brownies and Kodak No. 2C	2½ × 4½	E30	2/-	—	—	—
Ensign 3½, Kodak No. 3 ...	3½ × 4½	E18	2/-	—	—	—
Ensign 3½A, Kodak No. 3A ...	3½ × 5½	E22	2/6	—	—	—
Brownie No. 3 ...	3½ × 4½	E24	2/-	—	—	—
Bull's Eye No. 2 and F.P.K. No. 2	3½ × 3½	E01	1/6	—	—	—
Bull's Eye No. 4 ...	4 × 5	E03	2/6	—	—	—
F.P.K. No. 4 ...	4 × 5	E23	2/6	—	—	—
Cartridge Kodak No. 3 ...	4½ × 3½	E19	2/-	—	—	—
Kodak No. 4A ...	4½ × 6½	E26	3/6	—	—	—
Cartridge Kodak No. 4 ...	5 × 4	E04	2/6	—	—	—
Cartridge Kodak No. 5 ...	7 × 5	E15	4/-	—	—	—

FILM-PACKS (12 exposures only).

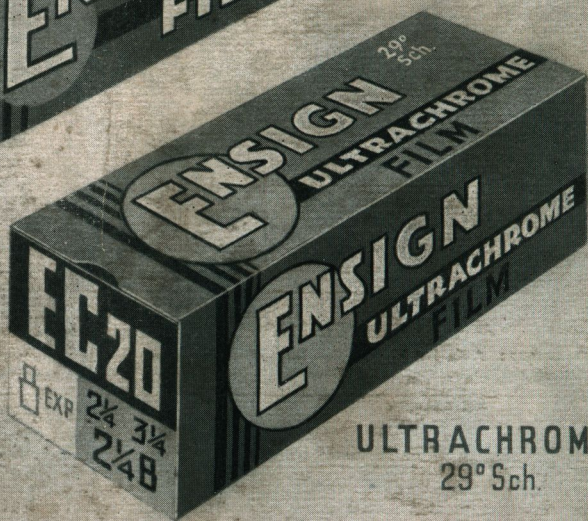
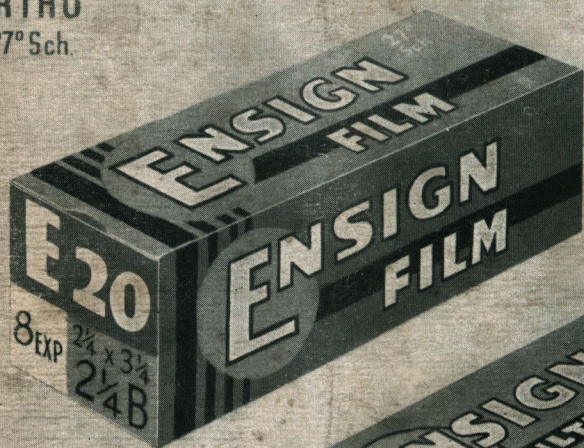
Ordinary: Agfa Isorapid, Zeiss Ikon and Gevaert. **Ortho:** Selochrome and Agfa Isochrom, Zeiss Ikon Pernox, Gevaert Superchrom. **Panchromatic:** Agfa and Selo Hypersensitive.

	ORDINARY			ORTHO.				PAN.		
	Agfa	Gevaert	Zeiss Ikon	Agfa Isochrom	Gevaert Superchrom	Selo-chrom	Zeiss Pernox	AGFA I.S.S.	SELO Iso-Hyperpan sensitive	SELO Hyperpan sensitive
2½ × 1½ ...	2/-	2/-	2/-	2/3	2/3	2/3	2/3	—	3/-	3/-
4½ × 6 cm. ...	—	—	—	—	—	—	—	—	—	—
3½ × 2½ ...	2/8	2/8	—	2/11	2/11	2/11	2/11	4/-	4/-	4/-
6 × 9 cm. ...	—	—	2/8	—	—	—	—	—	—	—
4½ × 2½ ...	—	—	—	—	3/6	—	—	—	—	—
4½ × 3½ ...	4/6	4/6	—	5/-	5/-	5/-	5/-	6/3	—	6/3
8 × 10½ cm. ...	—	—	4/6	—	—	—	—	—	—	—
4.5 × 10.7 cm. ...	—	—	—	3/-	—	—	—	—	—	—
6 × 13 cm. ...	—	3/-	—	3/4	—	—	—	—	—	—
9 × 12 cm. ...	5/3	5/3	—	5/9	5/9	5/9	5/9	7/3	—	7/3
4½ × 3½ ...	—	—	5/3	—	—	—	—	—	—	—
5½ × 3 ...	—	—	—	—	6/-	—	—	—	—	—
5½ × 3½ ...	—	—	—	6/4	6/4	—	—	—	—	—
5 × 4 ...	—	—	—	—	6/4	—	—	—	—	—
10 × 15 cm. ...	7/-	7/-	—	7/9	7/9	7/9	—	—	—	—
6½ × 4½ ...	—	—	—	10/-	10/-	—	—	—	—	9/6
7 × 5 ...	—	—	—	11/-	—	—	—	—	—	—

ENSIGN FILM

For Better Snaps!

ORTHO
27° Sch.



ULTRACHROME
29° Sch.

Just try it!

MADE IN GREAT BRITAIN