



Kodak

CATALOGUE



KODAK CATALOGUE ★ 1937

KODAK LIMITED KODAK HOUSE KINGSWAY LONDON WC2



RETAIL BRANCHES IN GREAT BRITAIN AND IRISH FREE STATE

London

61-65 KINGSWAY WC2 184-186 REGENT STREET W1
96 VICTORIA STREET SW1 59 BROMPTON ROAD SW3
91 BISHOPSGATE EC2

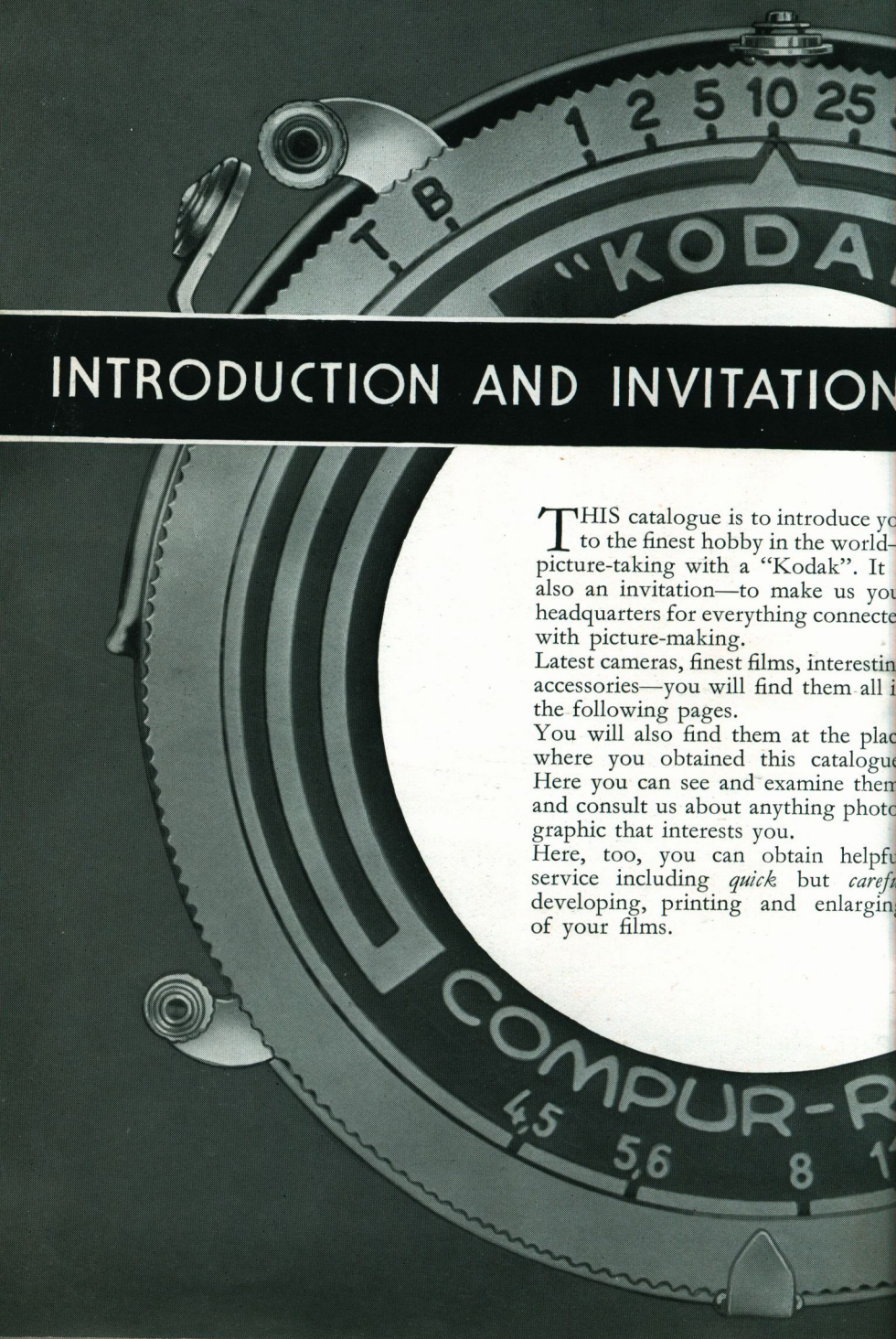
Birmingham 45 CORPORATION STREET 2 *Liverpool* 70 LORD STREET 2

Newcastle-on-Tyne 110 GRAINGER STREET 1

Glasgow 46 BUCHANAN STREET C2 *Dublin* 89 GRAFTON STREET C3



Prices, descriptions and illustrations of the goods in this catalogue are correct at the time of going to press, but are subject to variation without notice



INTRODUCTION AND INVITATION

THIS catalogue is to introduce you to the finest hobby in the world—picture-taking with a “Kodak”. It is also an invitation—to make us your headquarters for everything connected with picture-making.

Latest cameras, finest films, interesting accessories—you will find them all in the following pages.

You will also find them at the place where you obtained this catalogue. Here you can see and examine them and consult us about anything photographic that interests you.

Here, too, you can obtain helpful service including *quick* but *careful* developing, printing and enlarging of your films.

100 200 400
PID
22 32



CHOOSING YOUR CAMERA

What size of picture do you prefer?

ACTUAL-SIZE reproductions of pictures taken by some of the most popular "Brownies" and "Kodaks" are shown on the following pages. First decide which size appeals to you most; that will then help you to select your camera.

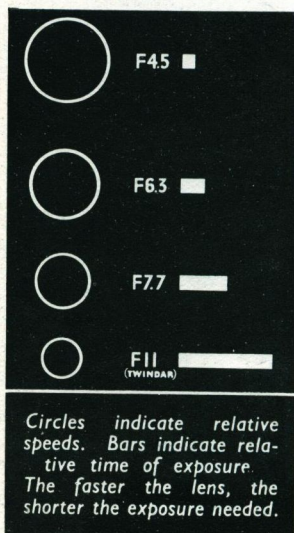
Whichever size of picture you choose, you will find here cameras of extreme compactness; there are slim folding cameras and light handy box "Brownies" which can be taken about with you anywhere, easily, conveniently.

What kind of pictures do you want to take?

Excellent "holiday snaps"—groups, views, etc. in fair weather—can be taken by the simplest cameras ("Brownies"—pages 7-14).

But the more scope your camera gives you, the more fun you'll get out of picture-taking. Snaps on dull days, indoors, at night, "action" shots of fast-moving subjects—sooner or later most people want to try these. Then a camera with somewhat more advanced equipment is necessary.

Here, for the benefit of beginners, are a few words of explanation about lenses and shutters, because it is the lens and shutter that decide what a camera can, and what it can't, do.



How lenses differ

Pictures are made by the light that the lens lets through during the fraction of a second that the shutter clicks open and shut.

The more light a lens can admit in this instant the "faster" it is said to be, and the more independent it makes you of lighting conditions.

On a bright summer day, any Kodak lens will take perfectly exposed pictures. On dull days, or earlier or later in the day, the fast lens has the advantage, because it can still let in enough light to make good pictures, even with snapshot exposures.

How to tell the speed of a lens

The speed of a lens is reckoned by the size of its largest stop. These stops, or "f" numbers*, are always marked round the lower half of the shutter on folding cameras—see pictures on opposite page. The *smaller* the "f" number the *faster* the lens. For example, an $f6.3$ lens (that is, one whose largest stop is $f6.3$) is faster than an $f8$ lens. $f4.5$ is faster than $f6.3$, and so on.

The best kind of lens is known as an "Anastigmat".

* The "f" rating of a lens is the figure arrived at by dividing the focal length by the diameter. The speed varies as the "square" of the "f" number; e.g. $f4.5$ is approximately twice as fast as $f6.3$.

A word about shutters

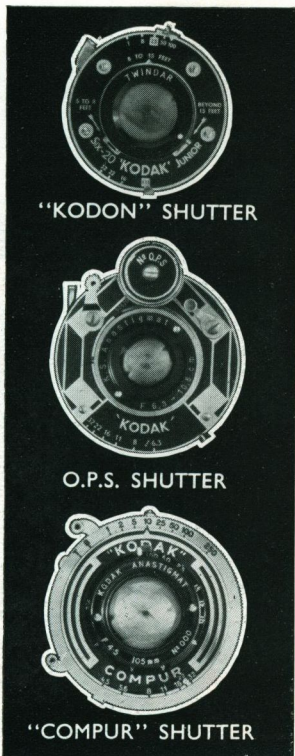
The Shutter controls the length of *time* during which light passes through the lens to make a picture, just as the lens itself controls the *amount* of light. The quicker the shutter the more rapidly the subject can move without the picture being blurred.

On nearly all folding "Kodaks" the shutters provide you with a range of speeds; normal for views, portraits, and groups, faster ones for restless subjects such as children at play, and animals. More advanced amateurs will appreciate the very wide range of automatic speeds provided by the famous "Compur" Shutter, which is fitted to all the highest-grade fast-lens "Kodaks". Split-second speeds up to $1/250$ th, and in some cases up to $1/400$ th or $1/500$ th second, according to the model, enable you to get sharp pictures of quickly moving sports subjects, etc.

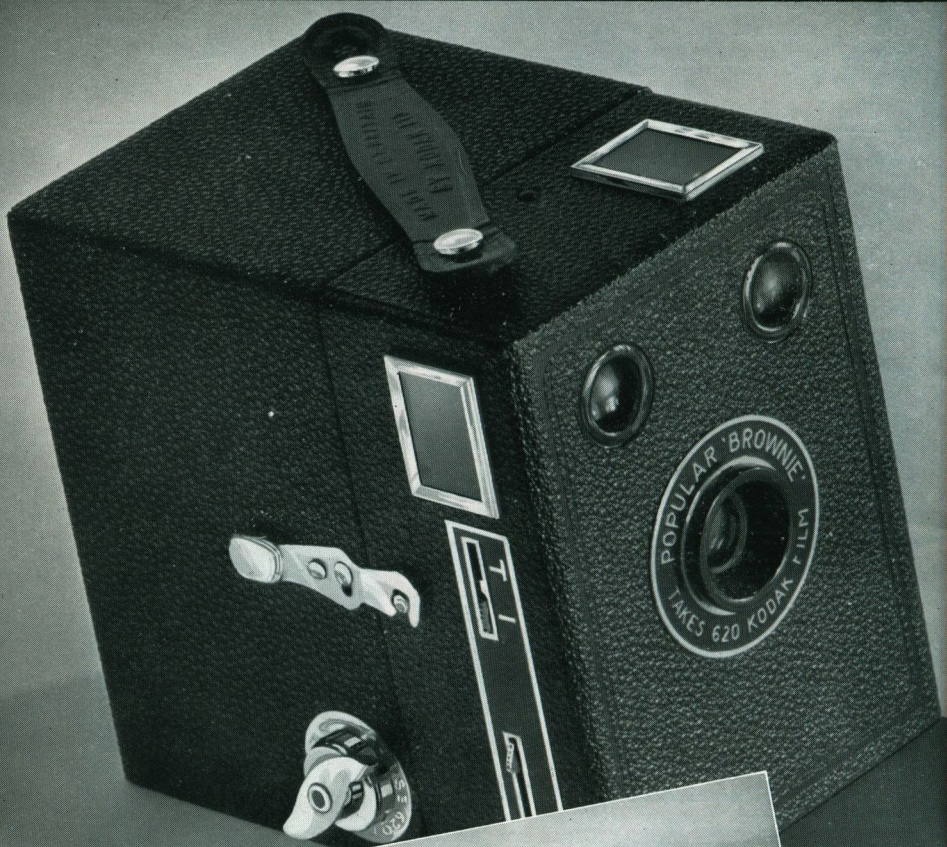
Photographing yourself

An ingenious Delayed Action device is built into certain O.P.S. and "Compur" shutters. This enables you, after setting the shutter, to get into position in front of the camera before the exposure is made—a decided advantage if there is no one else to take your picture or if you want to include yourself in a group.

Bearing in mind these points about lenses and shutters, you will be able to choose the camera that exactly suits your purse and purpose from the models shown in the following pages.



KODAK MADE; takes full-size $3\frac{1}{4}$ " x $2\frac{1}{4}$ " pictures, costs only 5/



ACTUAL SIZE OF
PICTURE TAKEN BY
POPULAR "BROWNIE"

POPULAR "BROWNIE"

Taking up snapsbotting for the first time?

Anxious to cut initial outlay to rock-bottom?

Looking for something really reliable—

a camera you can be absolutely sure won't let you down?

Here it is! 1937's latest—the Popular "Brownie"

THIS is a handy little box-type camera taking clear, crisp, full-size snaps $3\frac{1}{4} \times 2\frac{1}{4}$ inches. It uses the popular Kodak Film No. 620, obtainable from Kodak dealers everywhere.

The Popular "Brownie" is as easy to use as a camera could be; just sight your subject in one of the two large ground-glass viewfinders (one for upright and one for landscape-shaped pictures), press the lever, and the picture's yours.

And you can take "Time" exposures, too, by means of a very simple adjustment, so that you can get successful pictures on dull days and indoors. A Kodak-made lens is fitted.

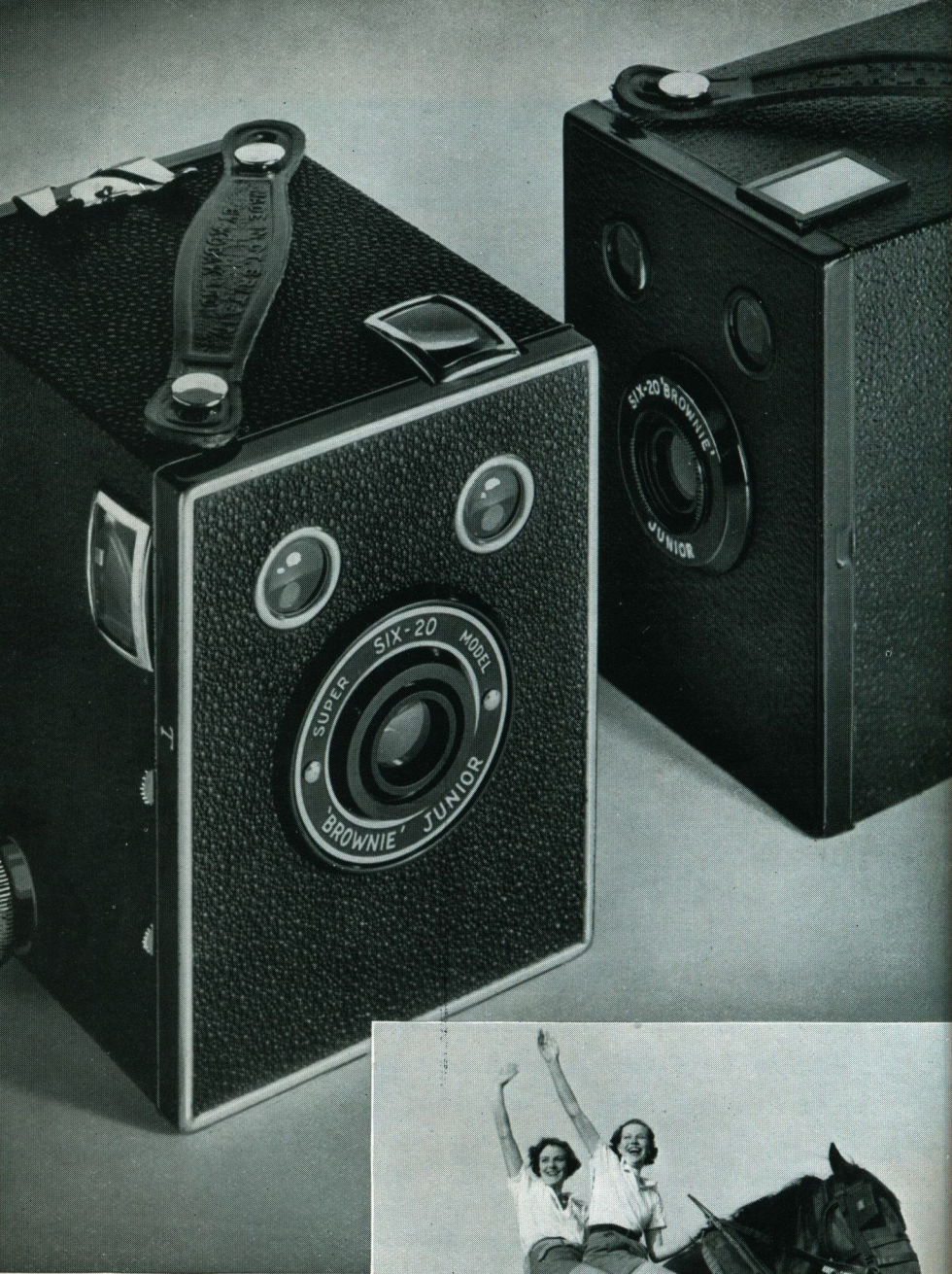
Neat black-grained leatherette finishes off the camera; metal parts are nickel plated or enamelled in glossy black.

The Popular "Brownie" is sold at a really popular price— $5/6$. Astonishingly cheap when you consider that this is no inferior camera of unknown make, but *Kodak*-make and *Kodak*-tested.

May we show you one?

Popular "Brownie" 5/6

For Kodak Film see pages 34-38 Carrying Cases page 45



ACTUAL SIZE OF PICTURE TAKEN
BY SIX-20 "BROWNIES" JUNIOR



Two more low-priced easy-to-use models taking $3\frac{1}{4} \times 2\frac{1}{4}$ inch pictures

SIX-20 "BROWNIE" JUNIOR

THERE is no better eight-and-sixpence-worth in photography than the Six-20 "Brownie" Junior. No focussing to bother with; nothing to complicate or confuse. Two extra-large reflecting viewfinders, one for upright, one for horizontal pictures. Hinged back for quick, easy loading. Shutter gives time exposures as well as snapshots. Strong all-metal body; very compact. Tested Kodak lens.

Six-20 "Brownie" Junior 8/6

SIX-20 "BROWNIE" JUNIOR SUPER MODEL

NAMED "Super" because of certain refinements of equipment and finish that every snapshotter will appreciate. Two large convex viewfinders, for example, give specially clear, brilliant images of the subject and make it very easy for you to see exactly what you are taking. And there is a handy milled-edge winding disc for winding on the film, extra easy for the fingers to get hold of and turn. Tested Kodak lens; reliable shutter for snapshots and 'Time' exposures. Hinged back, super smart finish in pebble grained leatherette and polished nickel.

Six-20 "Brownie" Junior (Super Model) 12/6

For Kodak Film see pages 34-38 Carrying Cases page 45

Views and 'close-ups'—you get both with these versatile "Brownies"

SIX-20 PORTRAIT "BROWNIE"

NO need to 'keep your distance' with the Six-20 Portrait "Brownie"; you can go right up to within 4 ft. or so of your subject and get head-and-shoulder 'close-ups'—intimate pictures that record people's features clearly and distinctly. And you can take 'close-ups' of animals and flowers just as easily.

You haven't got to bother with any extra lens attachment. Just pull out the special Portrait lever shown in the left-hand illustration opposite—it's clearly marked 'Pull for Portraits'; push it back for all subjects further than 6 ft. away. Nothing could be simpler.

Shutter for snapshots and 'Time' exposures. Two brilliant easy-to-see viewfinders. Smart black enamel and nickel finish. Picture size— $3\frac{1}{4} \times 2\frac{1}{4}$ inches.

Six-20 Portrait "Brownie" **17/6**

SIX-20 "BROWNIE"

AS versatile as a folding model, as easy to use as a box 'Brownie'—that is the kind of camera thousands of people want", said the Kodak designers. They met the demand by devising the Six-20 "Brownie".

Here is a "Brownie" with a difference. First of all it takes Landscapes and Groups and 'Close-ups', without any extra attachments. Then it tells you which lens stop to use under different kinds of conditions. (In spite of its versatility there's no going wrong with the Six-20 "Brownie"). There is a tested Kodak lens with an aperture of $f11$; a shutter for snapshots and 'Time' exposures; a smooth-working shutter release; and a fitting to take a cable release if required. There are no loose parts when you open the camera for loading and unloading. Finally, the Six-20 "Brownie" has an unusually striking front finished in brilliant stainless metal with black enamelled striped design. There's nothing finer in box-type cameras.

Six-20 "Brownie" **21/-**

For Kodak Film see pages 34-38 Carrying Cases page 45



ACTUAL SIZE OF PICTURE TAKEN
BY SIX-20 "BROWNIES"



MODERN
MOULDED MODELS

—box and folding—taking
Vest Pocket size pictures,
2½ inches x 1⅝ inches.

A FEW years ago it would have been impossible to produce a camera anything like so well made, or so handsomely finished,

at anything like the prices of the Baby "Brownie" or Jiffy "Kodak" V.P.

The recent invention of new moulded substances and materials has been seized upon by Kodak engineers and utilised in building still better and cheaper cameras, with the result that it is now possible to make, not toys, but sound reliable Kodak picture-takers such as the Baby "Brownie" and Jiffy "Kodak" V.P., which sell for as little as 5/- and 25/- respectively.

BABY "BROWNIE"

THE Baby "Brownie" has up-to-the-minute features—an eye-level viewfinder which folds down flush with the camera when not in use, a disc-type milled edge winding key for turning on the film, and a handsome glossy black 'streamline' finish.

Reliable shutter for snapshot exposures; no focussing—the Baby "Brownie" takes sharp pictures at all distances down to as close as 5 ft.

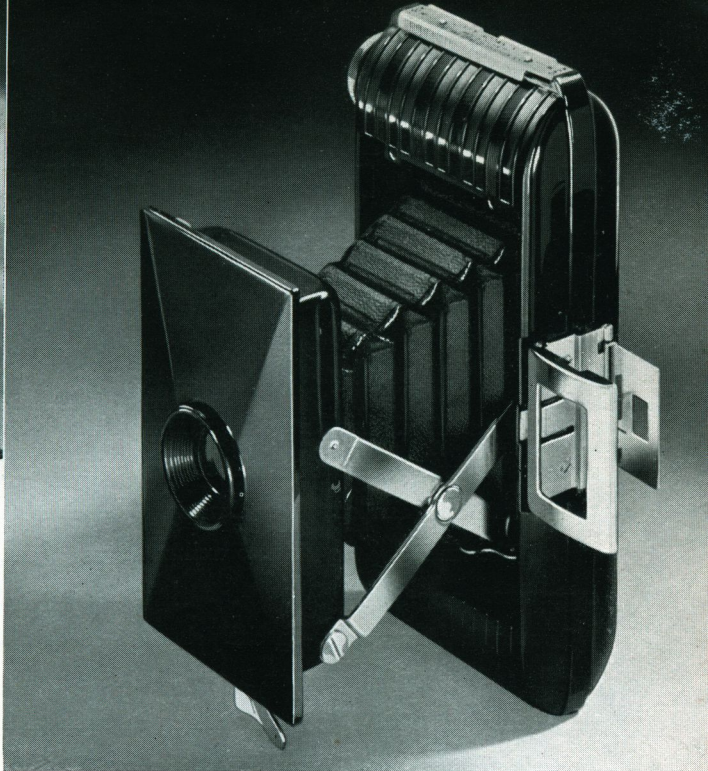
Absolutely the simplest, absolutely the lowest priced of all Kodak cameras.

Baby "Brownie" 5/-

For Kodak Film see pages 34-38 Carrying Cases page 45



ACTUAL SIZE OF PICTURE
TAKEN BY BABY "BROWNIE"
AND JIFFY "KODAK" V.P.



JIFFY "KODAK" V.P.

JIFFY by name and Jiffy 'by nature', this camera really does pop open in a jiffy at the touch of a button, instantly ready for snaps without any further adjustments.

It gives you all the advantages of the Baby "Brownie" described opposite—entire simplicity, no focussing, eye-level viewfinder, 'streamline' glossy black finish—and the added advantage of extreme compactness. V.P. stands for Vest Pocket; the smooth rounded edges of this splendid little picture-taker enable it to slip into pocket or handbag with ease.

Jiffy "Kodak" V.P. 25/-

For Kodak Film see pages 34-38 Carrying Cases page 45

The camera thousands have been waiting for

SIX-20 FOLDING "BROWNIE"

Takes standard-size pictures— $3\frac{1}{4}'' \times 2\frac{1}{4}''$

AS simple as a box "Brownie", with the added advantage of folding camera compactness.

It opens in a flash; a light pull on the locking latch and the bellows are fully extended, lens and shutter in position, all ready for pictures. It shuts up as swiftly; a single touch on a convenient button does the trick.

The tested Kodak lens gives clear snaps; there is no focussing to bother about. The shutter gives Time as well as the usual Instantaneous (snapshot) exposures.

Loading has been made especially simple. Lift the catch under the carrying handle and the back opens on hinges—no loose parts. The spool chamber where the new film is inserted swings right up clear of the camera—no fumbling in a confined space. Inside the back is a spring pressure plate to hold the film dead flat during exposures (and so help to ensure sharp pictures).

The winding key is of the latest disc type, with milled edge. The viewfinder, through which the subject is sighted, is a 'direct vision' finder; you hold it up to eye-level, and see your picture clearly framed in it before you snap.

Neat finish—grained leatherette, black 'crystalline', and polished nickel.

The Six-20 Folding "Brownie" comes to you complete in a handy Carrying Case that you can wear over your shoulder, keeping the camera out of harm's way and out of yours. No extra charge is made for this case.

Six-20 Folding "Brownie" complete with Carrying Case **2716**

For Kodak Film see pages 34-38



The most popular of all 3¼" × 2¼" folding cameras

SIX-20 "KODAKS" JUNIOR

WH**Y** are these models first favourites with the snapshotting public? Because they are exactly the kind of cameras that the average snapshotter wants; easy to use, well able to tackle the vast majority of subjects he is interested in getting, and popularly priced.

They're delightfully quick off the mark—snap open in a single movement, snap shut as quickly. There are three lenses to choose from, all Kodak tested—the Twindar (f_{11}), the faster Kodak Anastigmat $f_{7.7}$, and the still faster Kodak Anastigmat $f_{6.3}$. Each increase in lens speed means an increase in picture-taking opportunities, but whichever equipment you choose you can be sure of getting clear first-class pictures. Each lens can be focussed by a slight turn of the lens mount left or right, from 5 feet (for portraits) to 'infinity' (distant subjects).

The "Kodon" Shutter—simple, reliable—gives three useful snapshot speeds, $1/25$, $1/50$, and $1/100$ th second, and "Time" and "Brief Time" exposures.

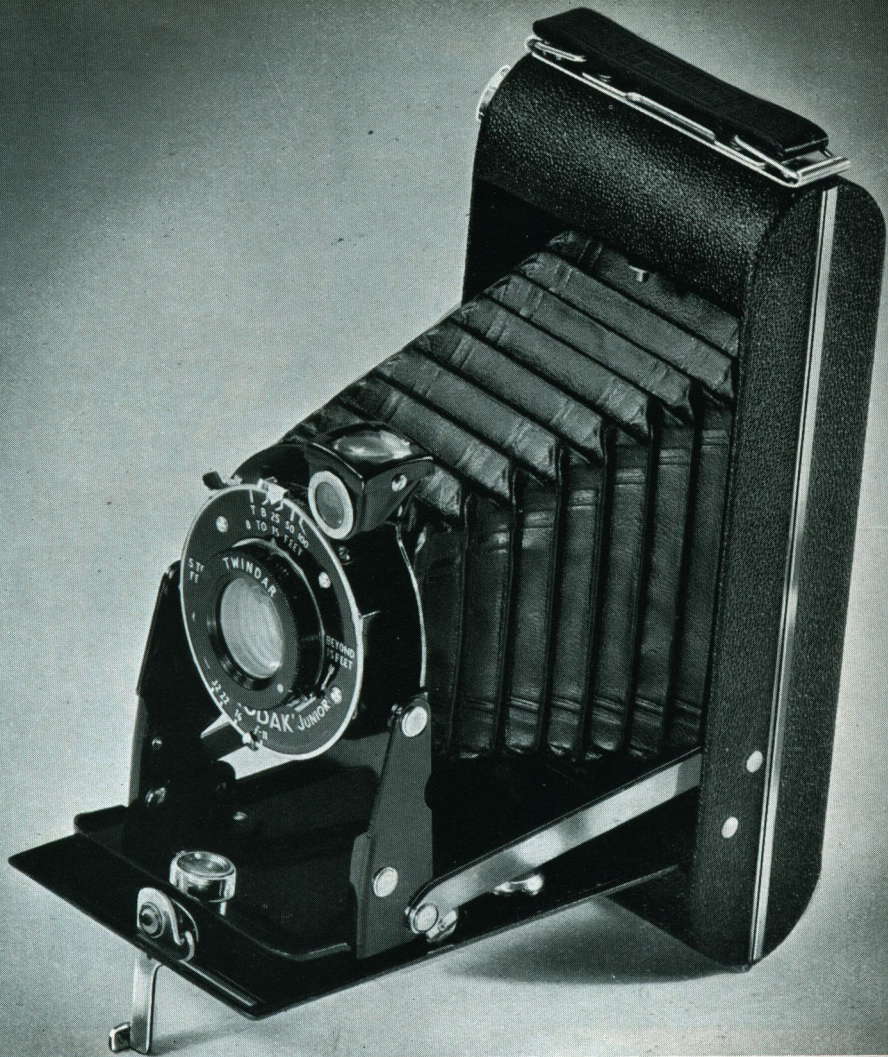
There is a reflecting viewfinder for use at waist-level; this is reversible for horizontal pictures. Two tripod sockets are provided. Other convenient features are—hinged back; lift-up spool chamber for easy loading; safety cover over red window so that fast panchromatic films can be used without fear of fogging.

De luxe models of the Six-20 "Kodak" Junior are also available—see page 19.

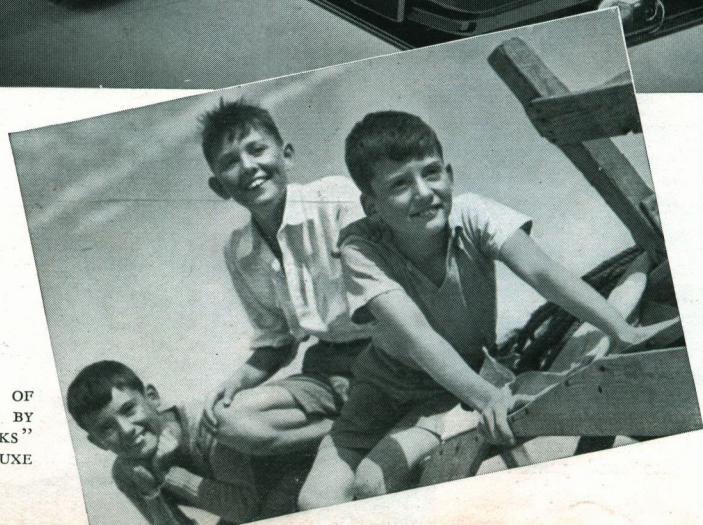
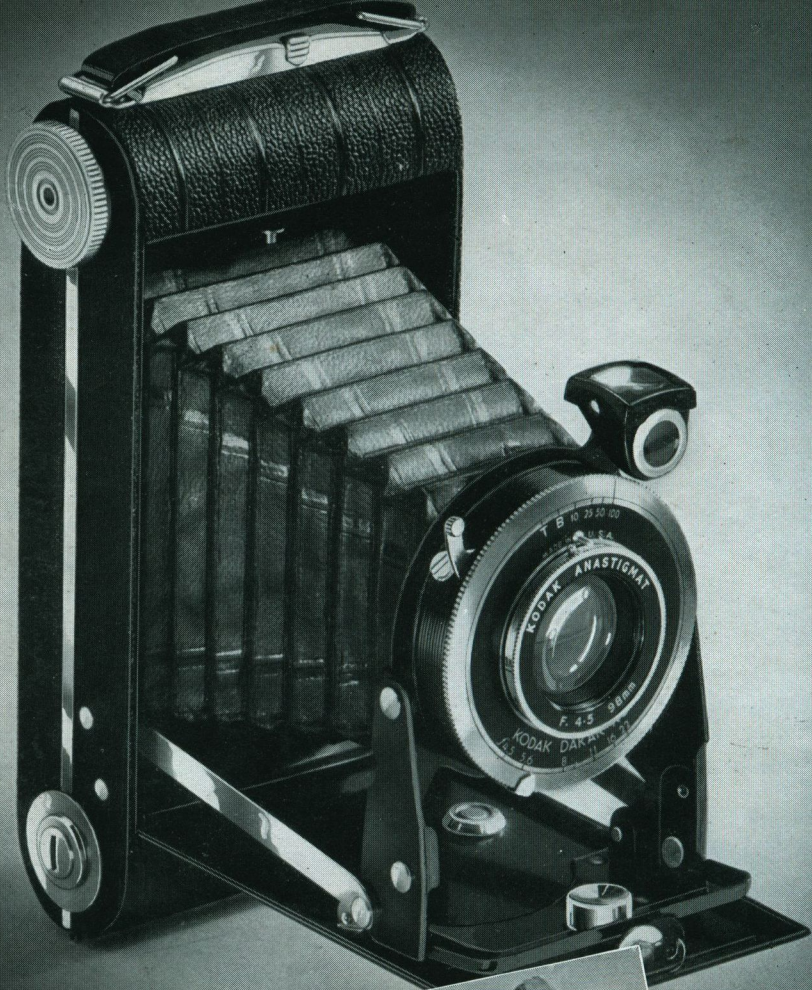
SIX-20 "KODAK" JUNIOR

With 3-speed "Kodon" Shutter and:—"Twindar" Lens	£1 19 6
Kodak Anastigmat $f_{7.7}$ Lens	£2 5 0
Kodak Anastigmat $f_{6.3}$ Lens	£2 15 0

For Kodak Film see pages 34-38 Carrying Cases page 45



ACTUAL SIZE OF PICTURE TAKEN BY SIX-20 "KODAKS" JUNIOR



ACTUAL SIZE OF
PICTURE TAKEN BY
SIX-20 "KODAKS"
JUNIOR DE LUXE

'Something better'—popularly priced

SIX-20 "KODAK" JUNIOR DE LUXE

(Available June 1st 1937)

HERE is a $3\frac{1}{4} \times 2\frac{1}{4}$ -inch folding camera that stands out because of two things: super equipment—low price.

There are two splendid lenses to choose from; the fast Kodak Anastigmat $f6.3$ or the considerably faster Kodak Anastigmat $f4.5$. All that an $f4.5$ lens means in extra opportunities for successful pictures, outdoors and in, in all weathers, you can now experience for yourself at extremely reasonable cost. This is the first time an $f4.5$ lens has been available on a standard size "Kodak" costing less than £5 os. od.

The $f6.3$ lens is fitted with a three-speed "Kodon" shutter giving $1/25$, $1/50$, $1/100$ th second, "Time" and "Brief Time" exposures. The $f4.5$ lens has the four-speed "Dakar" shutter, which gives, in addition to the speeds just mentioned, an extra one of $1/10$ th second. This 'slow snapshot' action is very useful for getting fully exposed negatives in poor light.

The camera has the same quick, smooth opening movement as the Six-20 "Kodaks" Junior described on the previous page. You are saved the trouble of pulling the lens and shutter out; the camera does that for you in half-a-second as you draw down the baseboard. And it closes just as easily.

Another refinement—the Six-20 "Kodak" Junior De Luxe has two viewfinders; a reflecting one (reversible for upright or horizontal pictures) for use at waist-level, and a finder of the direct vision type for use at eye-level.

Other points to note—finger-tip focussing (down to 5 ft. with the $f6.3$ lens, $3\frac{1}{2}$ ft. with the $f4.5$ lens); hinged back; swing-up spool-holder (makes loading easier); two tripod sockets; and a fine finish in black-grained figured leatherette and polished nickel—looks smart, keeps smart.

With Kodak Anastigmat $f6.3$ Lens and 3-speed "Kodon" Shutter . . .	£3 5 0
With Kodak Anastigmat $f4.5$ Lens and 4-speed "Dakar" Shutter . . .	£4 15 0

For Kodak Film see pages 34-38 Carrying Cases page 45

Finest and fastest 3¼" × 2¼" roll film models

SIX-20 "KODAKS"

THE Six-20 "Kodak" is made for the ambitious snapshotter who wants a really good all-round roll film camera; something simple, not overburdened with gadgets, but having a fast lens, a multi-speed shutter, and capable of taking first-class pictures under a wide range of conditions.

The unusually large variety of lens-and-shutter combinations available on this camera (see list at foot) enables you to choose exactly the right model for your purse and purpose. The *f*6.3 Anastigmat lens is fast enough for successful indoor and dull-day photography; the *f*4.5 still further increases opportunities for getting unusual pictures at all times of day and all seasons of the year.

The *f*6.3 lens is fitted with reliable three-speed shutters (O.V. and O.P.S.); the faster *f*4.5 lens with a precision shutter suited to its more advanced capabilities—the eight-speed "Compur", with automatic speeds of from 1 to 1/250th second. The "Compur-Rapid" Shutter, with a top speed of 1/400th second is also available; this gives you exciting, clear-cut 'action' pictures of sports, racing, etc. All shutters except the O.V. have a 'delayed-action' device that enables you to take a picture and be in it yourself.

Focussing is simple; a turn of the lens mount sets the focus for any distance from 'infinity' (distant landscapes) to 3½ feet (head-and-shoulder close-ups).

The Six-20 "Kodak" opens in a flash; a single movement extends the bellows and brings lens and shutter into picture-taking position.

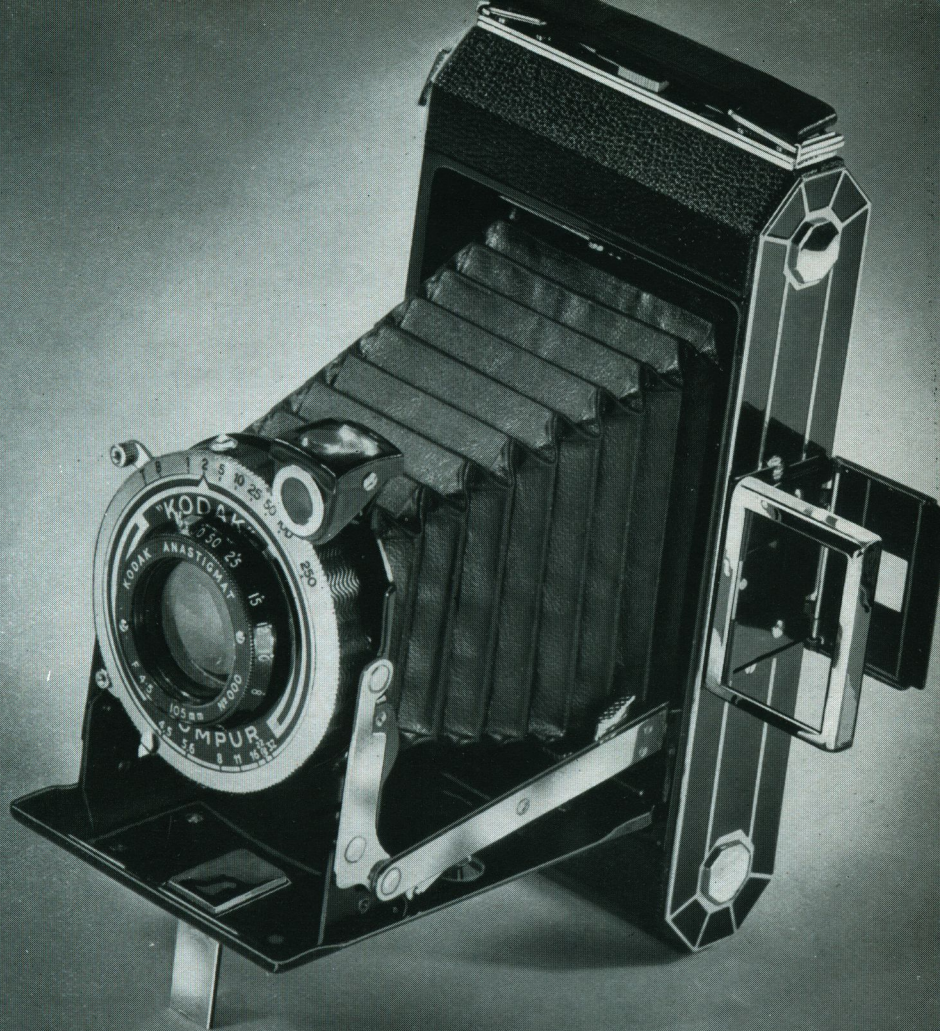
Other features you will find helpful—two viewfinders, reflecting (waist-level) and direct-vision (eye-level); hinged back; lift-up spoolholders (for easy loading); sliding safety cover over red window; two tripod sockets.

First-class finish in black pigskin-grained covering leather, black enamel, and chromium plate.

SIX-20 "KODAK"

LENS			SHUTTER			LENS			SHUTTER		
K.A. <i>f</i> 6.3	O.V.	£3 12 6	K.A. <i>f</i> 4.5	"Compur"	£7 7 0						
K.A. <i>f</i> 6.3	O.P.S.	£4 2 6	K.A. <i>f</i> 4.5	"Compur-Rapid"	£8 8 0						
K.A. <i>f</i> 4.5	O.P.S.	£5 5 0									

For Kodak Film see pages 34-38 Carrying Cases page 45

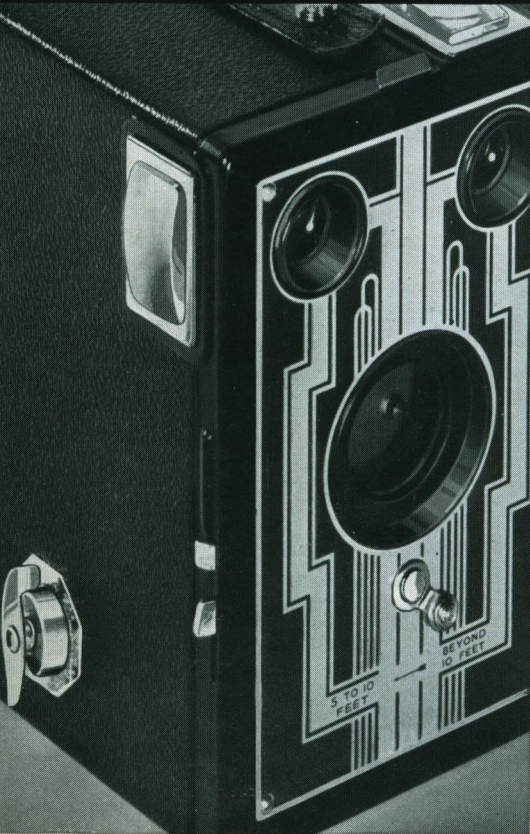


One of the many lens-shutter combinations available on the Six-20 "Kodak"
ACTUAL SIZE OF PICTURE TAKEN BY SIX-20 "KODAKS" (at right)



These cameras take BIGGER pictures

SIX-16 "BROWNIE" AND "KODAKS"



S MALL snapshots can always be enlarged up to make fine big pictures (especially those taken on Kodak "Panatomic" Film), but if you prefer a camera that gives large contact prints straight away, choose one of the following SIX-16 models. They take pictures measuring $4\frac{1}{4} \times 2\frac{1}{2}$ inches—really sizeable and nicely proportioned, for portraits, groups and views.

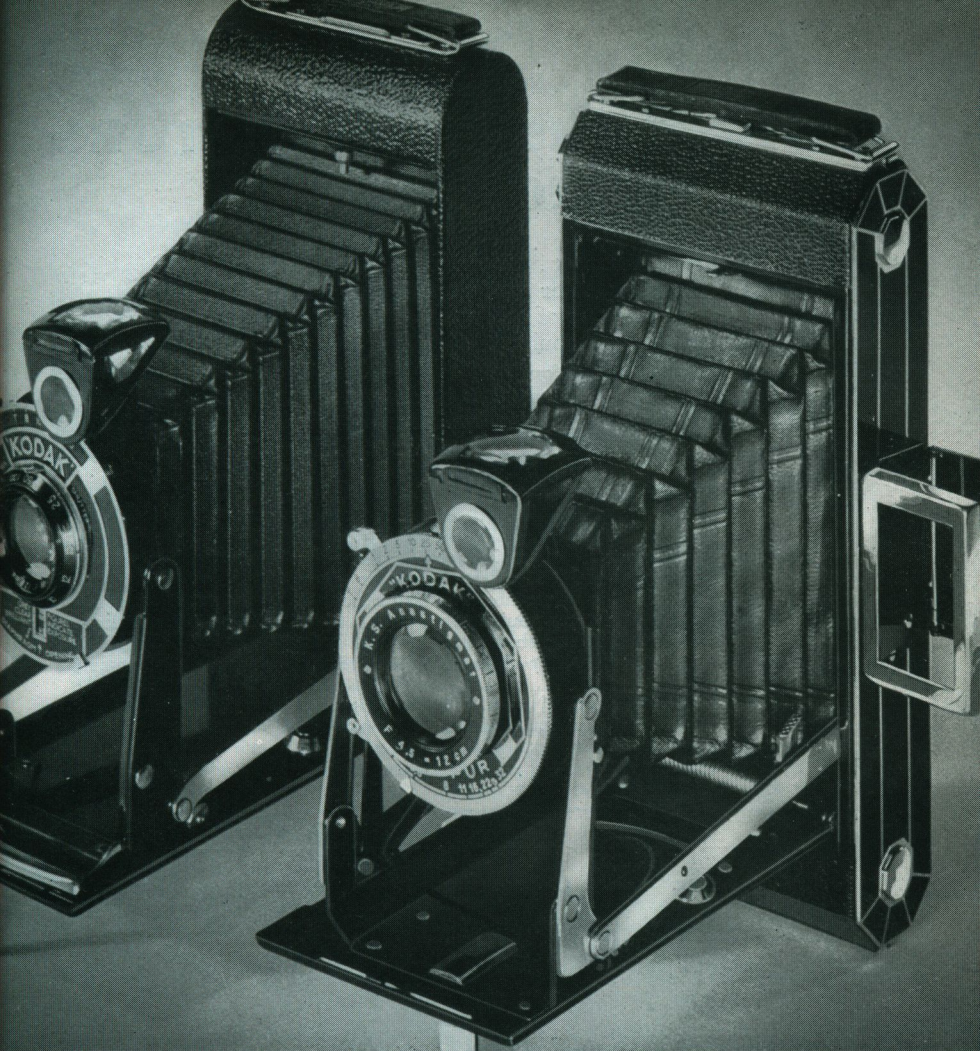
SIX-16 "BROWNIE"

Fitted with "Diway" Lens that enables you to take clear, sharp pictures of subjects near or far. Takes "Time" as well as snapshot exposures. Two lens stops. Two brilliant "Magna" viewfinders. Smart finish; black morocco grain covering; two-tone metal front; nickelled fittings **21/-**

SIX-16 "KODAKS" JUNIOR

Similar to SIX-20 "Kodaks" Junior described on page 16. The "Diodak" Shutter fitted to the $f6.3$ lens model has four speeds— $1/10$ th, $1/25$ th, $1/50$ th, and $1/100$ th second, "Time", and "Brief Time"—and it incorporates a built-in exposure guide.

- With "Twindar" Lens and "Kodon" Shutter **£2 7 6**
- With Kodak Anastigmat $f6.3$ Lens and "Diodak" Shutter **£3 3 0**



SIX-16 "KODAKS"

Similar to the SIX-20 "Kodaks" described on page 20.

LENS		SHUTTER		
K.A. f6-3	O.V.	.	.	£3 17 6
K.A. f6-3	O.P.S.	.	.	£4 7 6
K.A. f4-5	O.P.S.	.	.	£5 15 0
K.A. f4-5	Compur	.	.	£8 0 0
K.A. f4-5	Compur-Rapid	.	.	£9 0 0

For Kodak Film see pages 34-38 Carrying Cases page 45

HIGH-PRECISION MINIATURE "KODAKS"

"HOW beautifully compact!" is the first thing you say on seeing these models. And then, after you've examined them, "How beautifully made!" Which sums up two of the features that have made these miniature high-precision cameras so popular.

They have other advantages—extremely fast lenses which, in combination with multi-speed shutters, get pictures at all seasons, indoors and out; high exposure capacity; low cost per negative. Loaded with superfine-grain Kodak "Panatomic" Film they give clear, pin-sharp negatives that make splendid big enlargements.

THE "RETINA"

A true "miniature"—it measures only $4\frac{3}{4} \times 3 \times 1\frac{1}{2}$ inches—the "Retina" gives you true miniature-camera advantages—high-speed Schneider or Zeiss $f3.5$ lens in Compur or Compur-Rapid Shutter; holds 36 exposures at a single loading; has an exposure counter which tells you how many pictures you've taken, and a depth of focus scale indicating between what distances subjects are sharp at each focus and stop setting. Direct-vision optical viewfinder gives an extremely clear easy-to-see view of the subject. Lens-collar focussing down to $3\frac{1}{2}$ ft.

The "Retina" loads with Kodak 35-mm. Film (standard cine film size) in 36 exposure daylight loading cassettes; superfine-grain "Panatomic" and lightning-speed Super Sensitive Panchromatic grades are available. Picture size $1\frac{1}{2} \times 1$ inch (approx.).

The "Retina" is a camera especially suitable for travellers, tourists, and keen amateurs who want to get more out of their photography.

LENS	SHUTTER		LENS	SHUTTER	
Schneider Xenar $f3.5$	"Compur"	£10 10 0	Zeiss Tessar $f3.5$	"Compur"	£12 10 0
Schneider Xenar $f3.5$	"Compur-Rapid"	£12 0 0	Zeiss Tessar $f3.5$	"Compur-Rapid"	£14 0 0

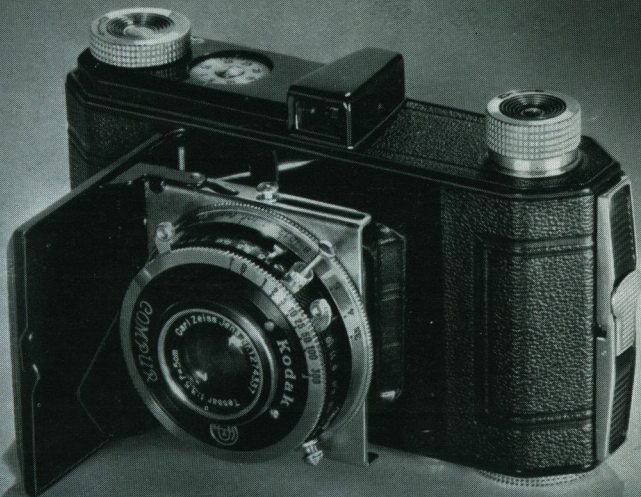
THE "PUPILLE"

Another brilliant "miniature", unusual in appearance and performance. Lens—super-fast $f3.5$, $f2.8$, or $f2$ —and 8-speed Compur Shutter are mounted direct on to lever-operated spiral thread built solidly into the camera body. No bellows—rock-steady operation. Lens-collar focussing down to as close as $2\frac{1}{2}$ ft. Optical eye-level viewfinder; depth of focus scale.

The "Pupille" uses Kodak Film No. 127—standard Vest Pocket size, but takes 16 pictures on each roll instead of the usual eight. Picture size $1\frac{3}{8} \times 1\frac{1}{4}$ inches.

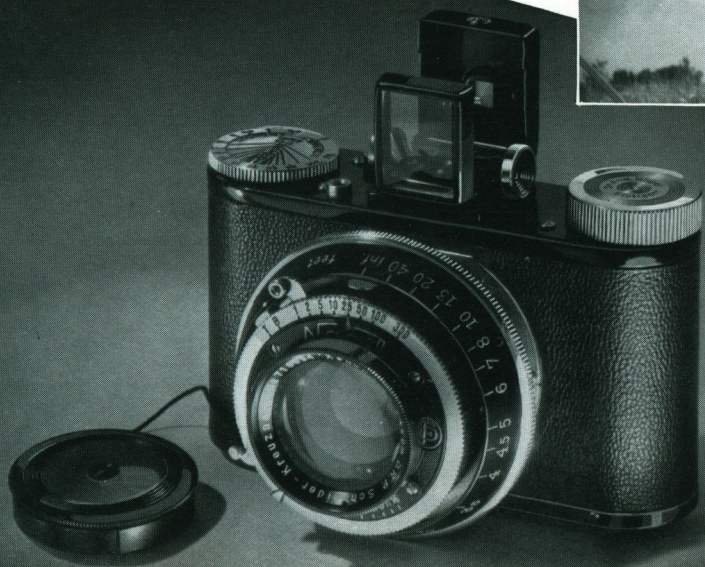
LENS	SHUTTER		LENS	SHUTTER	
Leitz Elmar $f3.5$	"Compur"	£15 15 0	Zeiss Tessar $f2.8$	"Compur"	£18 10 0
Zeiss Tessar $f3.5$	"Compur"	£15 15 0	Schneider Xenar $f2$	"Compur"	£21 10 0

For Kodak Film see pages 34-38 Carrying Cases page 45



ACTUAL SIZE OF *negative*
MADE IN THE "RETINA"
(can be enlarged as big as you wish)

ACTUAL SIZE OF PICTURE
TAKEN BY THE "PUPILLE"
(also makes splendid enlargements)



A high-grade 'large miniature'

SIX-20 DUO "KODAK"

THE Six-20 Duo "Kodak" makes the best of both photographic worlds; it has the compactness, precision equipment, and high exposure capacity of a 'miniature' camera, yet it gives quite large contact prints $2\frac{1}{4} \times 1\frac{3}{8}$ inches (only slightly under standard Vest Pocket size).

It uses the popular Kodak Film No. 620, but takes twice the normal number of pictures on it—16 instead of 8. All-weather equipment; fast $f4.5$ or $f3.5$ Anastigmat Lens; four-speed delayed-action Kodak Shutter, or eight-speed "Compur" Shutter. Lens-mount focussing $3\frac{1}{2}$ feet to 'infinity'. Optical direct-vision viewfinder. Handy built-in depth of focus scale shows at a glance the distances between which objects are in sharp focus at each lens stop.

LENS	SHUTTER		LENS	SHUTTER	
Kodak Anastigmat $f4.5$	Kodak	£7.10.0	Kodak Anastigmat $f3.5$	"Compur"	£10.10.0
Kodak Anastigmat $f4.5$		£6.0.0	Zeiss "Tessar" $f3.5$		£9.15.0
	"Compur"	£8.2.6		"Compur"	£12.5.0
£8.17.6			£13.10.0		

Prince of "Kodaks!" THE "REGENT"

DIRECTLY you look at the "Regent" you realise it's a super camera, a camera with a difference. For, to begin with, no other model has this de luxe streamline finish, unbroken by any projecting knobs or gadgets of any description. Nothing is built on to the "Regent"—everything's built-in. As a piece of modern camera designing it stands unique.

Then consider the superb equipment, and what it can do. A built-in coupled rangefinder entirely abolishes focussing guesswork. Turn a knob, get the subject clearly defined in the rangefinder, and you have automatically set the camera for the exact focus. You can be quite sure you'll never get an unsharp picture through faulty focussing.

The possession of a "Regent" is equivalent to owning two ordinary cameras, because the "Regent" gives you a choice of two picture sizes. It loads with Kodak Film No. 620 and takes either the usual eight $3\frac{1}{4} \times 2\frac{1}{4}$ -inch pictures, or, by the simple insertion of a couple of masks when loading, sixteen $2\frac{1}{4} \times 1\frac{3}{8}$ -inch pictures. So whether you like pictures big or small the "Regent" gives you exactly what you want. And, of course, excellent enlargements can be made from both sizes of negative.

Only a first-class lens and shutter would be good enough for a camera like this, so it is fitted with a Zeiss "Tessar" $f4.5$ Lens and "Compur"-Rapid Shutter with nine speeds up to $1/4000$ th second, and a delayed-action device for self-photography.

Hinged back; light-trapped red windows; swing-up spool-holders; one motion opening and closing; tripod socket—the equipment of the "Regent" is complete down to the last detail.

Even the carrying case has not been forgotten—a handsome case of real leather—for that, too, is included in the price of this masterly model.

With Zeiss "Tessar" $f4.5$ Lens and "Compur"-Rapid Shutter, including
Leather Carrying Case **£20 0 0**

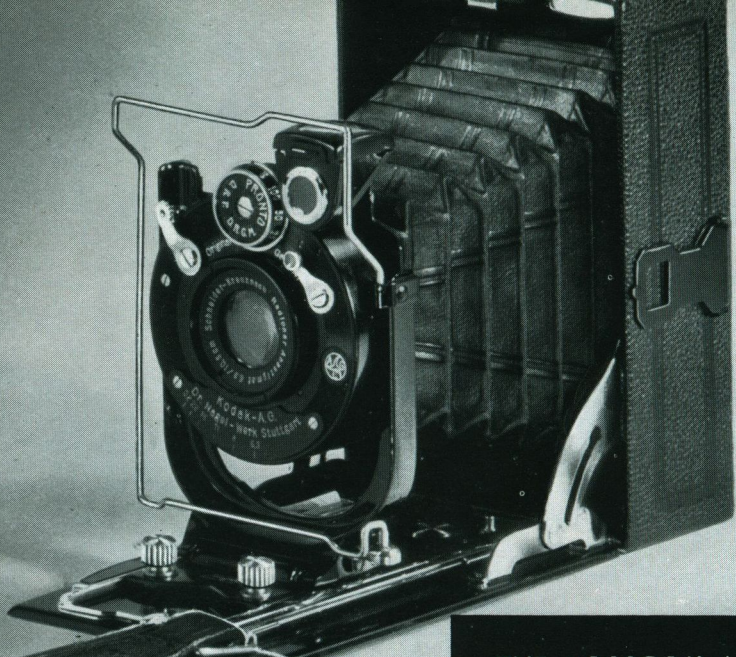
For Kodak Film see pages 34-38



SIX-20 DUO "KODAK"



The "REGENT"



THE "ANCA" (above)
and "RECOMAR"



Made specially for 'serious workers'

THE 'ANCA' AND 'RECOMAR'

TWO fine cameras specially equipped for keen club-men and specialists who prefer to use film packs or cut films as their sensitive material and who appreciate such refinements as ground glass focussing, rising and falling front, etc.

THE "ANCA"

Strongly built, versatile—and very moderately priced. Made in two sizes—No. 14 model for $3\frac{1}{2} \times 2\frac{1}{2}$ inch pictures. No. 28 model for 9×12 cm. or $4\frac{1}{4} \times 3\frac{1}{4}$ inch pictures. Rising and falling front; direct-vision and reflecting viewfinder; ground-glass focussing screen; spirit level (very useful for architectural studies). Focussing from 4 feet to 'infinity' (on No. 28 model 6 feet to 'infinity') by thumb-operated radial lever. Fast anastigmat $f6.3$ and $f4.5$ lenses, multi-speed shutters fitted with delayed-action device for self-photography.

	"ANCA" NO. 14	"ANCA" NO. 28
With Schneider "Radionar" $f6.3$ Lens in 4-speed "Pronto-S" Shutter	£5 5 0	£6 0 0
With Schneider "Xenar" $f4.5$ Lens in 8-speed "Compur-S" Shutter	£8 12 6	£10 10 0

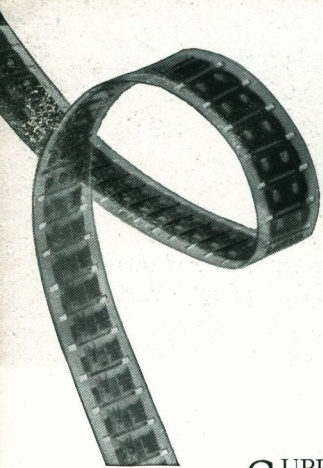
THE "RECOMAR"

The specialist will delight in this beautiful piece of advanced camera construction. The front has a good rise and fall as well as cross movements to left and right. Frame viewfinder for eye-level use and brilliant reversible reflecting viewfinder for use at waist-level. Pictures can, of course, also be sighted on the ground-glass focussing screen, which is well shielded from extraneous light by a spring-out hood. Spirit level; rack and pinion focussing, with locking action. Double extension allows use of long focus lenses or copying actual size. Two tripod sockets.

The "Recomar" is made in two sizes—No. 18 for $3\frac{1}{2} \times 2\frac{1}{2}$ -inch pictures; No. 33 for 9×12 cm. or $4\frac{1}{4} \times 3\frac{1}{4}$ -inch pictures. First-class lens and shutter equipment as follows—

	"RECOMAR" NO. 18	"RECOMAR" NO. 33
With "Compur-S" Shutter and Schneider "Xenar" $f3.8$ Lens	£11 17 6	£14 15 0
With "Compur-S" Shutter and Zeiss Tessar $f4.5$ Lens	£12 2 6	£14 7 6

For Kodak Film Packs and Cut Film see pages 38-39 Carrying Cases page 45



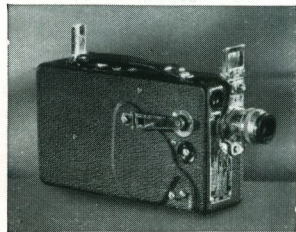
Photography
holds no greater thrill than
HOME MOVIES

SUPPOSE you had the power of bringing snapshots to life. Suppose you could suddenly 'unfreeze' the action—set the children playing again, start the waves rolling, the dog jumping. And suppose these moving pictures were not in ordinary black-and-white but in actual, living colour.

In short—*suppose you get a Ciné-“Kodak”*! For then you could work these miracles yourself.

What is a Ciné-“Kodak”? It is a small hand camera only a little larger than a box “Brownie”. You wind it up, point it at your subject, press a button, and it makes movies for you. Yes—it's just as simple as that.

When you've exposed all the film, you hand it to us or post it direct to Kodak Ltd., who 'process' it free of charge and send it back to you all ready for showing.



There are Ciné-“Kodaks” from as little as £9 17 6

That evening, you get out your “Kodascope” home projector, plug it into the ordinary electric circuit, thread up the film, then sit back and enjoy yourself—you and as many of your family and friends as you like.



“KODACHROME”—MOVIE MIRACLE

HOME movies have two tremendous advantages—in addition to giving you *movement* they can give you *colour*.

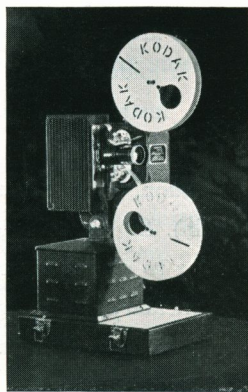
By slipping a spool of “Kodachrome” Film into your Ciné-“Kodak” you can make movies in full, rich, living colour—without bother, without special equipment, without filters. And you show them just as easily as black-and-white—again without any special equipment whatever. The colour is in the film.

“Kodachrome” is one of movie photography’s major miracles.

CHEAPER THAN YOU THINK

“**B**UT aren’t movies rather expensive?” some people ask. The answer is “No”—and here’s the proof.

Your own movie record, taken with a Ciné-“Kodak” Eight, of a complete little scene or episode such as Dinah doing a swallow dive off the top spring board, or father driving off the first tee (including preliminary swings) costs *less than 6d.* in black and white. You can get about 25–30 such scenes on a single roll of film. And you know exactly where you are with running expenses, because first costs are last costs too. Once you’ve bought a spool of Ciné-Kodak Film there’s nothing else to pay—the cost of finishing is included in the price of the film. In reality, therefore, you see that home movies can be enjoyed for quite a small cost; considering the immense and lasting pleasure it gives, filming is one of the least expensive of hobbies.



—and “Kodascopes” from
£9 9 0



No need to ask who they are! These famous M.G.M. stars are featured in the "Kodascope" library



The glamour of the East brought to your own fireside! A 'still' from a "Kodascope" library film

PROFESSIONALLY MADE FILMS AVAILABLE, TOO

POSSESSION of a "Kodascope" home projector opens the door to endless hours of entertainment. Not only your own personal films, whose charms will never fail, but hundreds of professionally-made pictures are waiting to flash upon your fireside movie screen, to amuse, instruct and enthrall you.

These films you can hire from the "Kodascope" Library (central-library in London, branches in Birmingham, Liverpool, Newcastle, Glasgow, and Dublin). Big 'stars' like Charlie Chaplin, cartoons, comedies, dramas, are waiting to entertain you whenever you wish. Travel pictures, fascinating 'documentary' films that you can't see anywhere else—real-life records of nature, customs, animals, etc.—they're all in the "Kodascope" Library! Descriptive catalogues and particulars of the moderate hire charges gladly supplied on request.



'How it's done'—a 'still' from one of the many fascinating documentary and instructional films in the "Kodascope" library



Movie records of great national and sporting events can be purchased outright for your own film library

BUILDING UP A PERMANENT FILM LIBRARY

JUST as there are certain books you want to buy and have with you always, so there are films of outstanding merit that you will want to keep in your own personal permanent film library.

These films are called Ciné "Kodagraphs"; their subjects include wonderful pictorial records of historic and national interest, such as the Jubilee of King George V, the launching of the *Queen Mary*, R.A.F. displays, and Trooping the Colour. And new, topical Ciné "Kodagraphs" are always being added.

So you see what the possession of a "Kodascope" alone can bring you in the way of brilliantly varied entertainment.

Used in conjunction with a Ciné-"Kodak", it is the perfect entertainer for every home.

GET THIS FREE DESCRIPTIVE LITERATURE

Here we have been able to do no more than hint at the wonderful new world that home movies opens up for everyone. No doubt there are still a lot of questions you would like to ask. We are here to answer them. We have some very interesting literature on the subject of home movies which we shall be very pleased to give you. And we should like also to arrange for a personal demonstration whenever you wish.

Home movies should be seen to be believed!

KODAK FILMS

*Two good reasons why it's best to use
Kodak Film—always*

Kodak Cameras are specially designed for use with *Kodak Film*. Photo-finishing methods throughout the country are specially suited to the particular characteristics of *Kodak Film*.

KODAK Film, the film that started the snapshot hobby fifty years ago, and the overwhelming choice of *amateur photographers from that day to this, is made in four 'grades'. All grades give excellent pictures; each had distinctive qualities that make it specially suitable for some particular *kinds* of pictures.

**And did you know that most of the big British and American film successes you see at the cinemas are shot on Kodak Film? It's the movie directors' choice, too.*

Kodak "Panatomic" Film gives wonderful enlargements (see page 36)



"Verichrome's" double coating captures detail in the shadows as well as in the highlights



For bright snaps in sun or shade use

KODAK "VERICHROME" FILM

THE SUPERIOR GENERAL-PURPOSE FILM

THIS is why "Verichrome" is such a very good film—

1—It is Double-coated. A slow coating of sensitive silver emulsion corrects over-exposure and prevents the effect shown in A (see picture at right); a fast coating guards against under-exposure and helps to prevent the black, sooty effect shown in B. The two coatings combined ensure proper exposure throughout the picture and give clear bright snapshots rich in detail (C—below).

2—"Verichrome" has enormous latitude. Even though you should accidentally over-expose to a very considerable extent, "Verichrome" still gives you a good picture.

3—"Verichrome" is more sensitive to greens and yellows than ordinary films. Therefore it gives more realistic, 'natural'-looking pictures, in black-and-white, of landscapes and all other subjects containing these commonly occurring colours.

4—"Verichrome" is faster—enables you to get pictures even in the shade or on dull days.

5—"Verichrome" is coated with an Anti-Halation Backing—gives clear, crisp rendering of brilliant lights, etc.—does away with objectionable 'blur'.



For grain-free prints and enlargements of superb quality use

KODAK "PANATOMIC" FILM THE FINEST FILM

ALL amateur photographers who appreciate 'quality' in a picture—pearly highlights, rich shadows, sparkling tones—should use "Panatomic". In particular, owners of small-negative cameras will find "Panatomic" exactly the film they need.

The reason is—"Panatomic" has a panchromatic emulsion of superfine grain. 'Panchromatic' means that it is sensitive to all colours, including red, and so gives true, rich, vivid renderings in black-and-white of all subjects. 'Superfine grain' refers to the tiny grains of which the silver emulsion is composed. These are *ultra*-small in "Panatomic", which makes this film tip-top for enlarging. The smallest "Panatomic" negative will yield the biggest enlargement without showing any signs of unpleasant graininess. (See illustration on page 34.)

In addition, "Panatomic" is Double-coated and Anti-Halation Backed, to get all possible detail and to render it crisply.

For quick-action subjects and all night-time photography use

KODAK SUPER SENSITIVE PANCHROMATIC FILM
THE FILM OF LIGHTNING SPEED

Super Sensitive—that is, of extremely high speed. *Panchromatic*—sensitive to all colours. This is the film for the photography of rapid motion—sports subjects, racing, etc. It is also the film for photography at night by artificial light, to which it is specially sensitive. Because of its extraordinary speed Kodak Super Sensitive Panchromatic Film revolutionised technique in the movie studios, and for the same reason it has now opened up the



Ordinary Film

Hat—red. Coat—green. Scarf—red, orange, green, brown. Skirt—dark blue. The Panchromatic Film, being sensitive to all colours, gives the better, more natural, black-and-white rendering.



Kodak Super-sensitive Panchromatic Film

fascinating new field of home photography after dark. (See page 56 for more about Night Photography.)

An Anti-Halation Backing ensures crisp rendering of tricky lightings; Double Coating gets fullest details.

Still unbeatable at its price

KODAK REGULAR FILM

Year-in year-out dependability made Kodak Regular Film first favourite with millions of snapshotters. It is still the standard 1/- ($3\frac{1}{4} \times 2\frac{1}{4}$ inch size) film, unbeatable for general snapshotting on sunny days (and Time exposures in any weather).

**ALL FOUR GRADES OF KODAK FILM ARE MADE
IN ROLL FILMS AND FILM PACKS**

PRICES OF THE MOST POPULAR SIZES ARE GIVEN ON THE NEXT PAGE

KODAK FILMS—PRICES

KODAK REGULAR AND "VERICHROME" ROLL FILM

For use in	Picture Size	Exposures	Verichrome		Regular	
			No.	Price	No.	Price
Jiffy "Kodak" V.P., Baby "Brownie" and Pupille*	2½ × 1⅞ in.	8	V127	1/2	127	1/-
Six-20 "Kodaks"*, Kodak "Regent", Six-20 "Brownies" (Box and Folding) and Popular "Brownie"	3¼ × 2¼ in.	8	V620	1/2	620	1/-
No. 1 "Kodaks" and No. 2 "Brownies"	3¼ × 2¼ in.	8	V120	1/2	120	1/-
Six-16 "Kodaks" and Six-16 "Brownies"	4¼ × 2½ in.	8	V616	1/6	616	1/3
No. 1A "Kodaks" and No. 2A "Brownies"	4¼ × 2½ in.	8	V116	1/6	116	1/3

KODAK SUPER SENSITIVE PANCHROMATIC AND "PANATOMIC" ROLL FILM

For use in	Picture Size	Exposures	Super Sensitive	"Panatomic"	Price
			Panchromatic No.	No.	
Jiffy "Kodak" V.P., Baby "Brownie" and Pupille*	2½ × 1⅞ in.	8	SS127	F127	1/6
Six-20 "Kodaks"*, Kodak "Regent", Six-20 "Brownies" (Box and Folding), and Popular "Brownie"	3¼ × 2¼ in.	8	SS620	F620	1/6
No. 1 "Kodaks" and No. 2 "Brownies"	3¼ × 2¼ in.	8	SS120	F120	1/6
Six-16 "Kodaks" and Six-16 "Brownies"	4¼ × 2½ in.	8	SS616	F616	1/9
No. 1A "Kodaks" and No. 2A "Brownies"	4¼ × 2½ in.	8	SS116	F116	1/9

KODAK FILM FOR 35 mm. (Miniature) CAMERAS

"Panatomic" and Super Sensitive Panchromatic Grades—

Daylight Loading and Unloading Cassette (36 exp.) for "Retina" and "Leica" 3/6

Daylight Loading and Unloading Spool (36 exp.) for "Contax" 3/6

Unspooled Length (36 exp.) for loading into "Leica" Film Cartridges 2/-

KODAK FILM PACKS

Kodak Regular, "Verichrome", Super Sensitive Panchromatic, and "Panatomic"

Each film pack consists of 12 films enclosed in a strong and rigid metal casing.

Size of Picture		"Verichrome"		Super Sensitive Panchromatic		"Panatomic"		Regular	
Inches	Centimetres	No.	Price	No.	Price	No.	Price	No.	Price
3¼ × 2¼	6 × 9	V520	2/11	SS520	4/-	F520	4/-	520	2/8
4¼ × 2½	6.5 × 11	V516	3/6
4¼ × 3¼	8 × 10.5	V518	5/-	SS518	6/3	F518	6/3	518	4/6
5¼ × 3	7.5 × 13.5	V542	6/-
5½ × 3¼	8 × 14	V522	6/4

Please ask us about prices of sizes not shown here

*For Pupille and Six-20 Duo "Kodak" read 16 exposures instead of 8 and picture-size half that stated

KODAK CUT FILMS

FOR USE IN "ANCA", "RECOMAR" AND OTHER CAMERAS

FOR the "Anca" and "Recomar" cameras described on page 29, and other non-roll-film models, Kodak Film is available in the form of flat cut films that can be loaded into ordinary plate-holders, by means of Kodak Cut Film Sheaths (see foot of page).

Kodak Cut Films have the twin advantages of being very much lighter than plates, and completely unbreakable. Added to these physical advantages they possess fine-quality sensitive emulsions that give beautiful negatives, as the widespread use of these films by professional photographers shows.

KODAK PORTRAIT FILM is made in three grades; Par Speed—suitable for average subjects; Super Speed Ortho—for use when extra speed is called for; and High Speed Ortho Anti-halo, Matt Back—for difficult subjects with contrasty lightings.

KODAK SUPER SENSITIVE PANCHROMATIC FILM AND KODAK "PANATOMIC" FILM, described on pages 36-37, are also available in cut film form.

Size Inches	Kodak Portrait Film	Kodak Super Sensitive Pan- chromatic and "Panatomic" Film
$3\frac{1}{4} \times 2\frac{1}{4}$ per dozen	1/8	1/10
$3\frac{1}{2} \times 2\frac{1}{2}$ "	1/8	1/10
$4\frac{1}{4} \times 3\frac{1}{4}$ "	2/6	2/9
$5\frac{1}{2} \times 3\frac{1}{2}$ "	4/2	4/6
5 × 4 "	4/2	4/6
$6\frac{1}{2} \times 4\frac{3}{4}$ "	5/6	6/-

For prices of other sizes please ask us

KODAK CUT FILM SHEATHS

Enable cut films to be used in ordinary plate-holders.

Size	Size
$3\frac{1}{4} \times 2\frac{1}{4}$ in. 6d	5 × 4 in. 9d
$3\frac{1}{2} \times 2\frac{1}{2}$ in. 6d	$5\frac{1}{2} \times 3\frac{1}{4}$ in. 9d
$4\frac{1}{4} \times 3\frac{1}{4}$ in. 6d	$6\frac{1}{2} \times 4\frac{3}{4}$ in. 1/-



“VELOX” *The name is on the back of every print*

LEADING photo-finishers all over the country make their customers' prints on “Velox”—the Kodak Quality Paper. Amateurs who prefer carrying out this interesting work for themselves can't do better than follow the experts' lead.

By providing no less than four grades for amateur use, “Velox” enables the best possible print to be “coaxed” out of every negative, even those which have departed from the normal in exposure or development. The four grades are—Soft, Medium, Vigorous, and Extra Contrast. A flat negative, for example, needs the Vigorous grade of “Velox”, while a hard negative is best printed on the Soft grade.

In the matter of surface, too—a question of personal taste—“Velox” offers you ample choice. All grades except Extra Contrast are available in an Art (satin), Glossy (highly glazed), or Carbon (dead matt) finish. Extra Contrast is made in Art and Glossy only.

Supplied in all popular sizes in **6d** and **1/-** packets.

For Kodak Bromide Papers see next page

Splendid for enlarging

KODAK BROMIDE PAPERS

“THE bigger the better” is nearly always true of snapshots, and they enlarge beautifully on Kodak Bromide Paper. There is a great variety of grades to choose from, so that you can suit any particular subject with your own choice of colour and texture of paper—rough cream for landscapes, glossy white for fine detail work, etc. Most grades are made in three or four degrees of contrast to suit every kind of negative.

Some leading grades—“Nikko” (glossy); Velvet (semi-matt); Kodak Tinted Royal (cream rough—extremely popular with exhibition workers); Kodak Fine Grained Tinted Royal.

For more advanced work there is Kodak Bromoil Paper and “Transfertype” Paper which enables you to transfer enlargements on to glass, tiles, metal, etc. Please ask for details.

Supplied in all popular sizes: single weight papers in 6d and 1/- packets, double weight papers in 8d and 1/3 packets.

An entirely new kind of paper

“BROMESKO”

A MATEURS who do their own printing and enlarging will know that up till now it has not been possible to get a paper as fast and easy-working as Bromide Paper that would give warm-black tones by direct development. Such a paper has long been wanted by all photographers, and now here it is—“Bromesko”. “Bromesko” is equally good for contact prints and enlargements; it can be developed with standard Bromide Developer (such as Kodak “Special”) and it yields straight away an image of a most attractively rich, warm tone, admirably distinctive for portraits and many kinds of landscape subjects.

“Bromesko” costs no more than ordinary Bromide Paper. Please ask us for full details of grades and surfaces, etc.

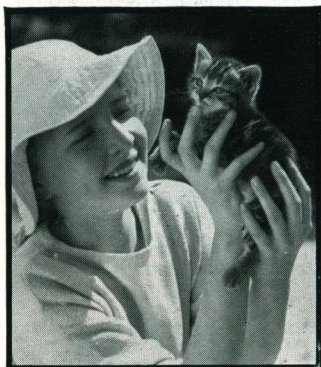
KODAK PRINTING-OUT PAPERS

“KODATONE” and “Self-toning Solio” enable prints to be made in the easiest possible way, in daylight. All you need is a printing frame and some Hypo. Full instructions enclosed in every packet.

In 6d and 1/- packets.

LENS ATTACHMENTS

that enable you to do new things with your Kodak Camera



KODAK PORTRAIT ATTACHMENT

HHEAD-AND-SHOULDER portraits of your friends, interesting "close-ups" of animals and flowers—pictures like these add interest and variety to your photography. And you can take them with all Kodak cameras. Those models that have a fixed focus lens or one focussing only to 5 feet simply need the addition of a Kodak Portrait Attachment. This is a little extra lens that slips over the ordinary lens and allows you to bring the camera right up close to any subject and still get sharp clear pictures of it. The Portrait Attachment makes no difference to the exposure necessary.



Just slip the Kodak Portrait Attachment over the lens of your camera

Kodak Portrait Attachments are made in a number of sizes to fit all types of Kodak lenses. See list on page 44.

Kodak Portrait Attachment (any size) 3/-

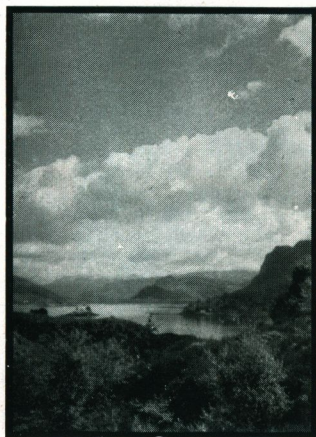
Some people prefer pictures that are not absolutely sharp in outline but artistically "diffused". For their benefit the **KODAK DIFFUSION PORTRAIT ATTACHMENT** (for "close-ups") and **KODAK PICTORIAL DIFFUSION DISK** (for views) are made in sizes to fit most Kodak models.

They are available from 7/6 each, according to size. (See list on page 44.)

KODAK COLOUR FILTER This is a yellow-tinted lens attachment which slips over the ordinary camera lens in the same way as the Kodak Portrait Attachment.

It gives added brilliance and truth to your pictures by ensuring that nature's colours are rendered more accurately into black-and-white and the shades of grey between. The yellow "holds back" the over-active blues and allows the yellow and greens in the subject time to record themselves properly on the film. It improves landscapes, too, by making the most of cloud detail in the sky.

The Kodak Colour Filter is best used with Kodak "Verichrome", "Panatomic", or Super Sensitive Panchromatic Film. It necessitates a rather longer exposure than normal.



Prices from **4/6**, according to size. (See list on page 44.)

KODAK SKY FILTER This resembles the Colour Filter in appearance, except that the upper half only is coloured yellow. When the Sky Filter is placed on the camera lens it restrains the blue light from the sky, allowing the clouds to register themselves on the film, but does not affect the foreground. The result is it brings out full cloud detail without demanding increased exposures.

Prices from **4/6**, according to size. (See list on page 44.)

KODAK OPTICAL OUTFIT A complete set of Kodak Lens Attachments—Portrait Attachment, Colour Filter and Sky Filter, in a neat velvet-lined case which can be slipped into the pocket. There is a compartment for each attachment with its name blocked in gilt above.

Prices from **14/-**, according to size.

Please give name of camera, and lens and shutter equipment, when ordering any of the above Kodak Lens Attachments



LENS ATTACHMENTS (continued)

For descriptions see previous two pages

PRICES

	Order by this No.	Portrait Attachment	Diffusion Portrait Attachment	Pictorial Diffusion Disks	Sky and Colour Filters
FOR "BROWNIE" CAMERAS					
Six-20 "Brownie"	13	12/6	6/6
Six-20 "Brownie" Junior	1J	3/-	4/6
Six-20 "Brownie" Junior Super Model	1J	3/-	4/6
Six-20 Portrait "Brownie"	1J	4/6
Baby "Brownie"	3	3/-	7/6	...	6/6
Popular "Brownie"	3	3/-	7/6	...	6/6
Six-20 Folding "Brownie"	1J	3/-	4/6
Six-16 "Brownie"	7A	3/-	7/6	17/6	6/6
FOR JIFFY "KODAK" V.P.	13	3/-	7/6	12/6	6/6
FOR SIX-20 "KODAKS"					
Kodak Anastigmat, f6.3	20	6/6
Kodak Anastigmat, f4.5	7A	17/6	6/6
FOR SIX-20 "KODAKS" JUNIOR (including De-Luxe Models)					
Kodak Anastigmat, f6.3, f7.7 or Doublet lens	13	3/-	7/6	12/6	6/6
"Twindar" lens	6A	3/-	7/6	17/6	6/6
Kodak Anastigmat, f4.5	5A	6/6
FOR SIX-16 "KODAKS"					
Kodak Anastigmat, f6.3	20	6/6
Kodak Anastigmat, f4.5	22	6/6
FOR SIX-16 "KODAKS" JUNIOR					
"Twindar"	7A	3/-	7/6	17/6	6/6
Kodak Anastigmat, f6.3	13	3/-	7/6	12/6	6/6
FOR KODAK "REGENT"					
Zeiss "Tessar", f4.5	5	...	7/6	17/6	6/6

For attachments for other models please consult us



SHUTTER RELEASES

KODAK CABLE SHUTTER RELEASES The advantage of using a cable release over pressing the trigger with the finger is that there is far less possibility of jarring the camera and so spoiling the picture. Kodak Cable Releases are strong and lasting, and can be used in all climates. They are made in different sizes to fit different cameras; please consult us for details.

Price each, all sizes 2/-

KODAK SELF TIMER Enables you to go in for self-photography with cameras not already fitted with a Delayed Action Device. Presses the trigger for you and so enables you to include yourself in the picture. Can be fitted to any "Kodak" with cable release.

Price 6/-

CARRYING CASES

FOR "KODAKS" AND "BROWNIES"

EVERY camera is worthy of a case. Slung by a strap over the shoulder it keeps the camera out of harm's way and out of yours, saves it from accidental knocks and protects it from dust.



KODAK LEATHER CASES Made of Black or Tan Hide. The colouring is fast and will not rub off on your clothes should the case get wet. Smart cut, velvet lined:

TO TAKE	
Jiffy "Kodak" V.P.	6/9
SIX-20 "Kodak"	9/-
SIX-20 "Kodak" Junior (all models)	9/-
SIX-16 "Kodak"	10/-
SIX-16 "Kodak" Junior	10/-
SIX-20 Duo "Kodak"	9/-

TO TAKE	
"Retina"	12/6
"Anca", 3 slides and film pack adapter—No. 14	12/6
No. 28	17/6
"Recomar", 3 slides and film pack adapter—No. 18	12/6
No. 33	17/6

LIMP LEATHER, MOROCCO FINISH

For Jiffy "Kodak" V.P.	each	3/-
For SIX-20 "Kodak" and SIX-20 "Kodak" Junior (all models)	"	3/-
For all SIX-20 "Brownies"	"	3/6

TAN MAIL WATERPROOF CANVAS CASES These inexpensive canvas cases are strong and durable. They are bound with leather and fitted with shoulder straps.

TO TAKE	
SIX-20 "Kodak" Junior	2/6
SIX-16 "Kodak" Junior	2/9
SIX-20 "Brownie"	2/6
SIX-20 "Brownie" Junior	2/6

TO TAKE	
SIX-20 "Brownie" Junior Super Model	2/6
SIX-20 Portrait "Brownie"	2/6
Popular "Brownie"	2/6
SIX-16 "Brownie"	2/9

CASES FOR BABY "BROWNIE"

PURSE CASE Black Cloth, with wrist strap	1/-
SLING TYPE Brown Imitation Pigskin, with adjustable shoulder strap	1/6
WATERPROOF OUTDOOR CASE For Hikers and Cyclists. Green Waterproof Cloth, with loop for attaching to belt. Special clip allows case to be fastened to handle-bars of cycle	2/6

You'll need one of these when you give "Time" exposures

KODAK TRIPODS AND POCKET TRIPODS

SOMETIMES you have to give "Time" exposures—for indoor pictures or shots of floodlit buildings, for instance—and a convenient resting place for the camera is not always handy. On these occasions you need a Kodak Tripod.

G55, G66, G77 Low-priced, light-weight, sturdy tripods with neat black enamel finish. No. G77 has the additional advantage of a swivelling ball-and-socket head, which enables the camera to be tilted through a wide angle—vertically downwards if need be. All three models telescope up compactly.

No.	Sections	Size Closed	Size Extended	Weight	Price
G55	3	15½ in.	41½ in.	12½ OZS.	6/6
G66	3	17½ in.	44½ in.	15½ OZS.	8/6
G77	3	19½ in.	46½ in.	18½ OZS.	12/6

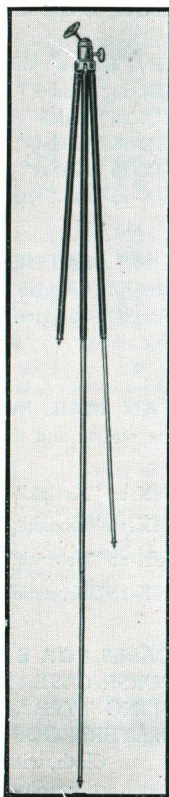
KODAK METAL TRIPODS rigid, strong, telescope up into exceptionally small space for carrying. Nos. 1 and 2 have revolving heads so that the camera can be swung round without moving the tripod; they are fitted with fastening straps. No. 0 has a fixed head and no straps.

No.	Sections	Size Closed	Size Extended	Weight	Price of Tripod	Price of Leather Case
0	3	15¼ in.	39½ in.	15 OZ.	13/6	9/-
1	4	15 in.	48½ in.	24¼ OZ.	21/-	9/-
2	5	13½ in.	49½ in.	25 OZ.	25/-	8/6

Rubber Tips for tripod feet, per set of 3 9d

THE "KODAPOD" is a "pocket tripod". It has toothed jaws at one end which will grip firmly on to tree or post; a clamping screw at the other holds the camera firmly in position during exposure. Price 8/6

THE "OPTIPOD" Another form of pocket tripod. The clamp is felt-lined so that it can be fixed on to a chair, table, etc. without risk of marking the surface. A ball-and-socket joint allows the camera to be adjusted to any angle. The "Optipod" can also be used on an ordinary tripod for tilting the camera in any direction to get unusual angle shots. Price 7/6



The easy way of developing your own films

KODAK FILM TANKS

DO you do your own developing? If so, do it the easy Kodak way. There's no rigging up a makeshift darkroom in the cellar; it's daylight all the way with the Kodak Film Tank. The film is first wound up in a light-proof "apron"; then the "apron", with the



film inside it, and safely shielded from light, is put into the developing solution for a standard time and afterwards fixed and washed. There's no skill required, you can't go wrong, and the whole operation can be carried out in the comfort of an ordinary room.

Kodak Film Tank No. 2 $\frac{1}{4}$, for all Kodak Films taking pictures 3 $\frac{1}{4}$ × 2 $\frac{1}{4}$ inches or less	£1 1 0
Kodak Film Tank No. 2 $\frac{1}{2}$, for all Kodak Films taking pictures 4 $\frac{1}{4}$ × 2 $\frac{1}{2}$ inches or less	£1 10 0
Kodak Film Tank No. 3 $\frac{1}{2}$, for all Kodak Films taking pictures 5 $\frac{1}{2}$ × 3 $\frac{1}{4}$ inches or less	£1 17 6

KODAK ADJUSTABLE FILM TANK



The advantage of this model is that the one Tank can be adjusted to accommodate all the most popular sizes of Kodak Film—Nos. 620, 120, 616, 116, 127, and 135 (Retina)—simply by shifting a flange from one notch to another. The film has to be loaded into the Tank in the darkroom; after that, all the operations of developing, fixing, etc. can be carried on in daylight. Made of stainless acid-resistant steel; cover of durable moulded material £1 10 0

For Developer Powders for use with these Tanks see page 57

DEVELOPING AND PRINTING AIDS

For the man who 'does his own'

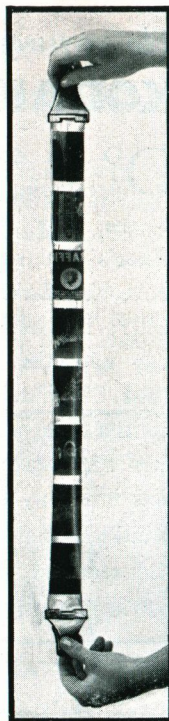
KODAK FILM PACK TANK Apart from the initial loading of the film into the Tank, which is done in the dark, all the convenience of daylight developing can be enjoyed by film pack users as well by means of the Kodak Film Pack Tank. It holds 12 films, so that all or part of a pack can be handled at once, and the negatives are of the high quality characteristic of the time and temperature method of development.

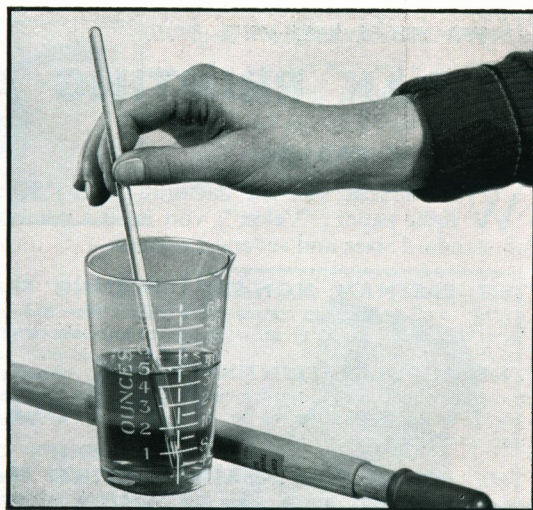
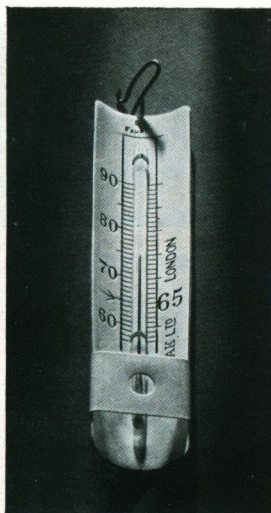
No. 1 for $3\frac{1}{2} \times 2\frac{1}{2}$ in. or $6\frac{1}{2} \times 9$ cm. films 8/6
 No. 2 for all sizes of films up to $5\frac{1}{2} \times 3\frac{1}{4}$ in. 15/-
 Developing Powders, per packet of 6:—
 for No. 1 Tank 1/-; for No. 2 Tank 1/6

KODAK FILM CLIPS are useful for holding the ends of the film during dish development and when it is hung up to dry.
 Kodak Film Clip with 2-inch jaws 1/6

KODAK JUNIOR FILM CLIP No. 1 A narrower clip suitable for narrow films such as Vest Pocket size 9d

Loading the Kodak Film Pack Tank





KODAK THERMOMETER Whether you develop by Tank or dish you need to know the temperature of your solutions accurately to get the best negatives. The Kodak Thermometer is made specially for photographic purposes; the degrees are boldly marked and widely spaced; they range from 60° to 90° F. Provided with a hook which allows it to be suspended inside a Tank. Price 3/—

KODAK THERMOMETER STIRRING ROD A combination of two darkroom necessities. Consists of a glass stirring rod $\frac{1}{4}$ inch in diameter and $9\frac{1}{2}$ inches long, enclosing a reliable tested thermometer. One end is flattened for the purpose of crushing chemicals. Invaluable as a time-saver; the temperature is taken while the chemicals are dissolving. Fahrenheit will be sent unless Centigrade specially ordered. In wooden box. . . . 5/6

DISHES Available in "Kodaloid" (assorted colours), Bakelite (black or mottled red) and Porcelain.

Sizes	"Kodaloid"	Bakelite	Porcelain
$3\frac{1}{2} \times 2\frac{1}{2}$ in.	5d	—	1/3
$4\frac{1}{4} \times 3\frac{1}{4}$ in.	7d	1/3	1/9
5 x 4 in.	8d	—	2/—
$5\frac{1}{2} \times 3\frac{1}{2}$ in.	8d	1/9	2/—
$6\frac{1}{2} \times 4\frac{1}{2}$ in.	1/—	2/3	2/9
$8\frac{1}{2} \times 6\frac{1}{2}$ in.	1/4	3/3	4/6



Prices of larger sizes on application

If you make your own prints

KODAK PRINTING AIDS

PRINTING FRAMES

WHETHER you use daylight paper ("Kodatone" or "Solio") or gas-light paper ("Velox") you need a printing frame. We have them in all standard sizes and several varieties—

THE EASTMAN NON-SLIP PRINTING FRAME

strong, well-finished in varnished wood. Price—1/3 in the Vest Pocket ($2\frac{1}{2}$ in. \times $1\frac{5}{8}$ in.) size; larger sizes also available.

THE POPULAR PRINTING FRAME, cheaper but thoroughly efficient. Complete with glass—11d in the Vest Pocket size; 1/- in the $3\frac{1}{4}$ in. \times $2\frac{1}{4}$ in. size. Larger sizes also available.

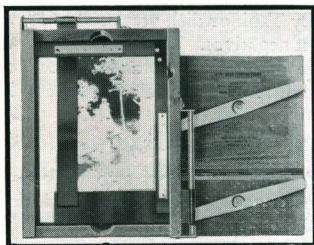
THE KODAK AUTO-MASK PRINTING FRAME

takes any negative up to 5 in. \times 4 in. or $5\frac{1}{2}$ in. \times $3\frac{1}{4}$ in. Has own set of masks which make it easy to get even, white borders on prints of any size. Price



Eastman Non-slip Printing Frame

8/6



Kodak Auto-mask Printing Frame

"KODALOID" PRINTING MASKS

A "Kodaloid" Mask is a sheet of transparent ruby material with an opening in the centre a little smaller than the negative from which you are printing. Although transparent the Mask is non-actinic (will not let photographically-active light through) so that by arranging a negative over the opening and placing the printing paper on the other side, you surround each picture with a neat white border. From 6d each according to size.

PRINT TRIMMERS

A print must be trimmed square and straight to look its best. And trimming often improves composition. With a Kodak Print Trimmer you can be sure of a straight, clean cut.

THE KODAK PRINT TRIMMING BOARD

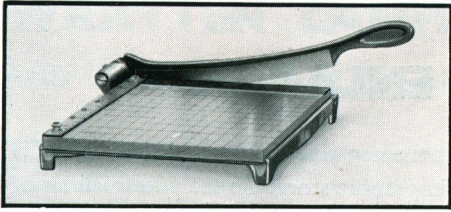
is fitted with a rule and fine quality steel blade. The blade can be detached for sharpening.

PRICES—

For prints up to 5 in. 4/6

For prints up to 7 in. 5/6





THE "EASTKO" TRIMMER

has a wooden rule and a substantial fine-quality knife; the bed is ruled off in half-inch squares. Will trim enlargements up to 10 in. **£1 15 0**

PRINTERS

For making numbers of prints you will find one of the Kodak Printers a great advantage over an ordinary printing frame. They are easy to handle, allow you to work speedily, and as the printing light and distance remain constant, enable you to standardise exposures.

THE "RAPID" ELECTRIC PRINTING BOX consists of wooden box with glass printing surface at the top covered by hinged lid. Inside the box are a red and a white electric light bulb. When the lid is opened the red light is switched on, giving sufficient safe light to enable you to adjust negative, mask and paper. When the lid is pressed down, the red light goes out and the printing light is automatically switched on to make the exposures. Works from an ordinary torch battery. Takes all negatives up to 6 x 4 in. Complete with bulbs and battery
PRICE 12/6



KODAK AMATEUR PRINTER

works on the same principle as the "Rapid" described above. Plugs into the ordinary electric light circuit and so allows a more powerful light to be used (40-watt pearl lamp advised). Masking device allows prints with white margins of any size from 2½ in. x 1⅜ in. up to 5 in. x 4 in or 5½ in. x 3¼ in. to be made.

PRICE—Complete with 5½ feet of flex and plug, but without lamps **£3 3 0**



Easy-to-use, low-cost

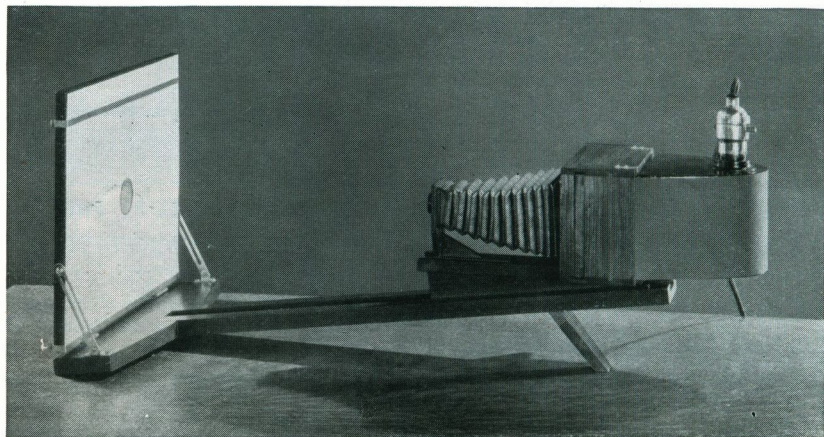
KODAK HOME ENLARGER

AN ordinary print, the same size as the negative from which it is made, is by no means the end of the photographic story. To see your pictures at their best you must see them as enlargements, and if you have a mind to do this work yourself there is no easier way than by using the Kodak Home Enlarger. It takes any size of negative from half Vest Pocket ($1\frac{3}{8} \times 1\frac{1}{4}$ in.) up to and including $4\frac{1}{4} \times 3\frac{1}{4}$ in. and 9×12 cm.—that is to say all the most popular sizes—and makes enlargements up to 14×11 in.

It consists of an easel, on which the Kodak Bromide Paper is pinned, and a camera portion, which contains the electric lamp and lens.

For focussing, the camera portion is slid to or from the screen along a grooved wooden support.

The whole Enlarger can be folded up compactly after use.



KODAK HOME ENLARGER, without lamp, but complete with "Kodak"

(98-mm.) Lens, negative holder, paper holder, and full instructions . . . **£5 12 6**

60-watt lamp advised—obtainable at any electrician's

WRATTEN LAMPS

AND OTHER DARKROOM EQUIPMENT

FOR enlarging work (and also for developing film if you do not use a Kodak Film Tank) you need a darkroom lamp to give you "safe" light that will not fog your sensitive material.

THE WRATTEN SAFELIGHT LAMP is made for use with electric light, gas, or oil. Any Safelight can be supplied, suitable for Kodak Bromide Papers, Kodak "Verichrome" Film, Kodak Super Sensitive Panchromatic Film, etc. Please ask for full details.

Wratten Safelight Lamps, complete with one Safelight from **£1 0 0**

THE "PROGRESS" DARKROOM LAMP An inexpensive little lamp for nightlight or oil.

Model 1, for nightlight **1/6**
 Model 3, for oil **2/3**

FERROTYPE PLATES Polished metal plates that enable you to give a high gloss to your pictures. The prints or enlargements are squeegeed down on to the plate while wet.

14 x 10 in. Standard Thickness . . . each **1/-**
 Extra Thick **1/6**

GLASS MEASURES Graduated vessels for measuring out solutions, etc. accurately. In all sizes from 1 drachm to 40 ozs. (1 quart).

PRICE from **9d** to **4/-**

EASTMAN PRINT PADDLE Enables you to manipulate prints in the fixing bath without getting hypo on your fingers. Made of hard rubber moulded round an aluminium core.

PRICE **2/6**



Sundries for the

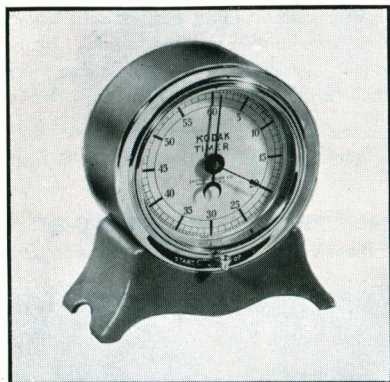
HOME DARKROOM

KODAK PUSH PINS For pinning up films and prints to dry.

Box of 12—With composite heads **1/3**
With aluminium heads **9d**

KODAK TIMER The Kodak Timer enables the photographer to time exposure and development with absolute accuracy. The dial is large and boldly marked. It has a second and a minute hand; both can be set quickly by the turn of a key, and the Timer can be instantly started or stopped. A heavy iron base safeguards the clock against accidental overturning.

PRICE **27/6**



KODAK PRINT ROLLER For squeegeeing prints and enlargements on to Ferrottype Plates (see page 53), and for quick, clean mounting. Two 6-inch rubber rollers suspended from nickelled handle give firm, even pressure.

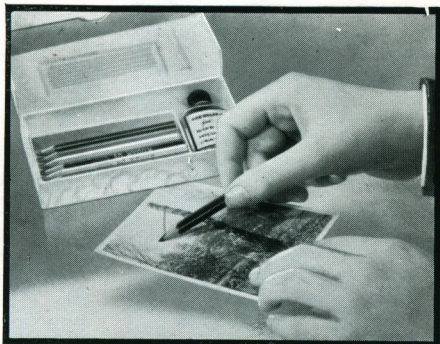
PRICE **7/6**



Making the most of your pictures

COLOURING—RETOUCHING

THERE'S endless fun in tinting snaps, and it is particularly easy to do with these Kodak Outfits. You haven't got to be an "artist"; the outlines of the black-and-white picture are there to guide you, and as the colours are transparent it is very easy to follow them and produce excellent coloured pictures.



"VELOX" TRANSPARENT WATER COLOUR STAMPS A "book" of 12 different coloured paper "leaves", each "leaf" being perforated into 26 small squares. These are detached and dissolved in water to make the actual tinting solutions. Also useful for tinting lantern slides. Full instructions enclosed. Price **2/6**

"VELOX" WATER COLOUR OUTFIT Complete colouring outfit—Book of "Velox" Water Colour Stamps (see above) and three brushes in box, the lid of which forms a mixing palette. Price **6/-**

KODAK SOLUBLE CRAYON OUTFIT Another simple colouring outfit—Seven $3\frac{1}{2}$ in. coloured pencils, bottle of medium, and roll of cotton wool. Complete with instructions. Price **2/6**

For retouching and "working up" negatives and prints—fascinating work for enthusiasts—there are—

KODAK RETOUCHING SET FOR NEGATIVES Pencil-holder, three refills, retouching medium, spotting medium, spotting brush . . . **3/6**

KODAK BROMIDE RETOUCHING SET For bromide enlargements. Four crayons—two black, one sepia, one white—in box **2/-**

KODAK SPOTTING PALETTE including eight colours and brush . . **1/3**

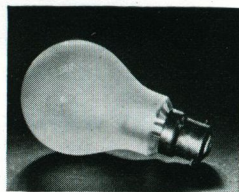
PICTURE-TAKING AT NIGHT



SUNSET is no longer "closing time" for your camera. Load it with Kodak Super Sensitive Panchromatic Film, which is especially sensitive to artificial light, switch on the brilliant "Photoflood" Lamps described below, and you can take an evening party, baby in his bath, a fireside group—unusual, intimate pictures—with quite short exposures. Or using the "Sashalite"—the clean modern flashlight—you can take *snapshots* indoors with any camera.

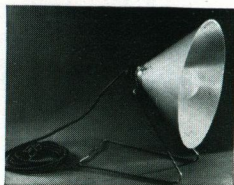
THE KODAK NIGHT PHOTOGRAPHY AIDS

"PHOTOFLOOD" LAMP Plugs into electric light socket just like an ordinary electric bulb; gives powerful continuous light sufficient for an immense number of pictures. Made in all standard voltages **2/6**



"KODAFLECTOR" REFLECTOR Specially designed aluminium reflector for "Photoflood". Increases efficiency of illumination at least $4\frac{1}{2}$ times, decreases necessary exposure times accordingly. Fits on to any standard lamp-holder **3/-**

"KODAFLECTOR" OUTFIT Consists of "Kodaflector" Reflector plus handy wire stand enabling "Kodaflector" to be stood on table or chair, suspended from picture-rail or shelf. Complete with 9 feet of flex, bayonet adapter to fit any electric socket, and bayonet lamp-holder for "Photoflood", but without "Photoflood" Lamp **7/6**



"KODAFLECTOR" TWO-UNIT FLOOR STAND Collapsible tubular stand, height fully extended, 6 ft. Fitted with two horizontal arms, each swivelling independently in any direction and each holding a "Kodaflector" Reflector and "Photoflood" Lamp. Complete with two "Kodaflectors" but without "Photofloods" **38/-**

BABY "SASHALITE" BULB The modern successor to flashlight. No smoke, no smell, no danger. Gives one brilliant flash; fired by pocket torch battery **8d**

"SASHALITE" AMATEUR OUTFIT Consists of two Baby "Sashalite" Bulbs, battery in holder, and collapsible reflector **7/6**

KODAK TESTED CHEMICALS

For developing, fixing, sepia toning, etc.

AS well as being Available for the photographer who does his own finishing work, many Kodak Tested Chemicals are used by Kodak Ltd themselves in the manufacture of Kodak products; a sufficient guarantee of rigorous purity and finest quality.



KODAK DEVELOPING POWDERS

KODAK SPECIAL DEVELOPER, HYDROQUINONE, ELON QUINOL, ELON, PYRO-ELON, PYRO-SODA, VELOX DEVELOPER. In packet form ready for mixing. Convenient, reliable, and economical. They are sold in boxes of 6 packets at 1/6 per box.

TANK DEVELOPER POWDERS

	<i>Per Pkt. of 6 Powders</i>
For Kodak Film Tank No. 1	-19
For Kodak Film Tank Nos. 2 and 2½	-19
For Kodak Film Tank Nos. 2½ and 3½	1/3
For Kodak Film Tank No. 5	1/6
Powders for "Brownie" Developing Box	-19

DEVELOPERS AND OTHER CHEMICALS IN SOLUTION As some amateurs prefer their developers, etc. already prepared for use on dilution, the following have been prepared—

Kodak Special Developer, 8-oz. bottle, making 16 to 32 oz. Developer	1/3
"Velox" Concentrated Developer, 8-oz. bottle, making 16 to 32 oz. Developer	1/3
Kodak Elon Quinol Developer, 8-oz. bottle, making 32 oz. Developer	1/3
"Kodol" Highly Concentrated Single Solution Developer (3 oz. make 75 oz. and upwards)	2/-
Potassium Bromide 10% Solution, per bottle	-19

FIXERS, TONERS, INTENSIFIER etc

Kodak Acid Fixing Salt, requires only dissolving in water to make an acid fixing bath. In tins—¼ lb, 7d; ½ lb, 10d; 1 lb.	1/6
Chromium Intensifier Cartridges, for intensifying weak negatives. In glass tubes, each tube making 8 oz. of Intensifier, per half dozen	2/6
Kodak "Hypo" (Sodium Thiosulphate) in clear pea crystals, per lb.	-16
Kodak Sepia Toner, for toning "Velox" or Bromide prints to rich sepias, per set	1/6 and 2/6
Kodak Liquid Hardener, for making Acid Fixing Bath with Hypo, 8-oz. bottle	1/3

Give your pictures a good home—in

KODAK ALBUMS

LOOSE in a packet, mislaid in a drawer—or neatly set out in an album, titled, ready to show your friends? No question which is the better way to keep snapshots! On this and the next three pages are shown some attractive albums and mounts that will do full justice to your finest snapshots, also some handy mounting aids that will enable you to fix those snapshots in position quickly, cleanly and neatly.

SLIP-IN ALBUMS

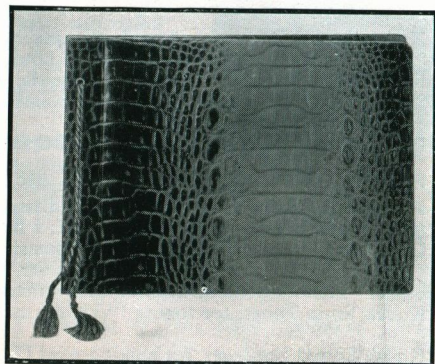
In these the leaves have openings the same size as the picture, under which the prints are slipped; no actual mounting is necessary.

THE "LYNTON" Brown or Grey covers of leather cloth with sheepskin grain. Leaves to match cover, secured by silk-finished tasselled cord. Holds 96 prints.

For $2\frac{1}{2} \times 1\frac{5}{8}$ in. prints	. . .	4/6
„ $3\frac{1}{4} \times 2\frac{1}{4}$ in. „	. . .	5/—
„ $4\frac{1}{4} \times 2\frac{1}{2}$ in. „	. . .	6/—

THE "OXFORD" Brown covers of polished leather cloth with crocodile finish. Tasselled cord. Holds 96 prints.

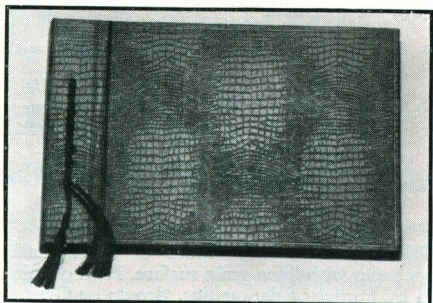
For $2\frac{1}{2} \times 1\frac{5}{8}$ in. prints	. . .	4/6
„ $3\frac{1}{4} \times 2\frac{1}{4}$ in. „	. . .	5/6
„ $4\frac{1}{4} \times 2\frac{1}{2}$ in. „	. . .	6/6





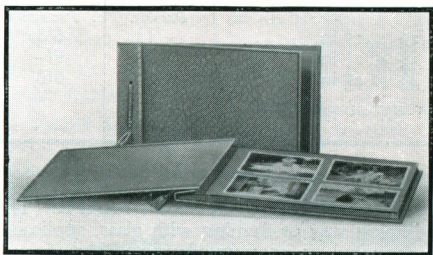
THE "ROAN" Inexpensive album bound in stout card with brown leather-grain finish. Holds 48 prints. ($2\frac{1}{2} \times 1\frac{5}{8}$ in. size, 36 prints).

For $2\frac{1}{2} \times 1\frac{5}{8}$ in. prints 9d
 ,, $3\frac{1}{4} \times 2\frac{1}{4}$ in. ,, 1/3
 ,, $4\frac{1}{4} \times 2\frac{1}{2}$ in. ,, 1/6



PASTE-ON ALBUMS

The paste-on type of album allows you to have more than one size of print in the same album, and you can make your own arrangement of prints on each page.



THE "ASTON" Leather-finished card covers of Antwerp blue; 12 light grey leaves held in place by silk-finished tasselled cord.

Size— $6 \times 4\frac{7}{8}$ in. 6d



THE "PURLEY" Stout light-grey grained card covers. Twelve leaves to match; silk-finished tasselled cord.

Size— $7\frac{5}{8} \times 6$ in. 1/-

THE "RHODES" Cover of embossed black book-cloth with word "Photographs" stamped in gilt. Fifty stout black paper leaves.

Size— 8×5 in. 3/-
 11×7 in. 4/6

This is a small selection only; we have many others to show you.

New ways of

MOUNTING YOUR PICTURES

Other attractive ways of mounting prints and enlargements are (1) on cards, (2) in folders, (3) in passe-partout frames. We recommend—



KODAK LINEN TEXTURE MOUNTS Stout art papers with linen grain surface, made in 13 different tints. Supplied in packets containing one colour only or in assorted colours. In each packet Adhesive Tints for dry mounting are included.

18 Mounts, 8 × 6 in., including 9 Adhesive Tints	} 1/- per packet
14 Mounts, 10 × 8 in., including 7 Adhesive Tints	
9 Mounts, 12 × 10 in., including 4 Adhesive Tints	

"FRIENDSHIP" FOLDER Made of good quality card, and art paper with linen grain surface. Print opening surrounded by border of darker tint. Brown or Grey.



	Per doz.	Per 100
For prints 2½ × 1⅝ in.	-1/1	6/3
„ „ 3¼ × 2¼ in.	1/3	9/-
„ „ 4¼ × 2½ in.	1/5	9/6

Larger sizes also available

KODAK METAL PASSE-PARTOUT FRAME The quickest, simplest way of framing with glass, applicable equally to mounted or unmounted prints. The glass is placed over the picture, the frame fitted round it, and the corners fixed by pushing metal tabs through the slots provided. The frame is provided with a reversible strut for standing it in upright or horizontal positions, and a metal hook for hanging it on the wall.

	5½ × 3½	6½ × 4¼	8½ × 6½	10 × 8
Black Finish	1/6	1/9	2/-	2/6
Brown Finish	1/6	1/9	2/-	2/6
Oxidised Finish	2/-	2/-	2/9	3/-
Bronze Finish	1/9	1/9	2/6	3/-

For mounting without mess

MOUNTING AIDS

EASTMAN DOUBLE-COATED MOUNTING TAPE Does away with all necessity for paste-pot and brush. The tape is simply moistened on one side and placed round back of print; the other side moistened and the print pressed down on mount. Quick, clean, simple.

Per roll of 50 feet **1/6** Per roll of 100 feet **2/-**

KODAK MOUNTING STAMPS Book of 24 sheets, each sheet perforated to make 24 stamps, gummed on both sides. Method of use similar to that of Eastman Double-coated Mounting Tape.

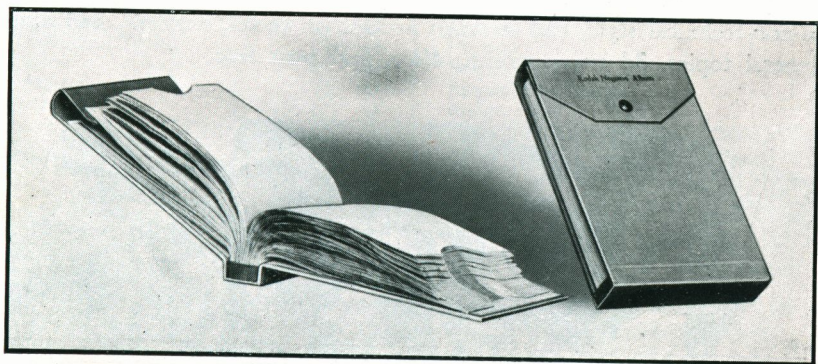
Per Book **3d**

Store your negatives safely in a

KODAK NEGATIVE ALBUM

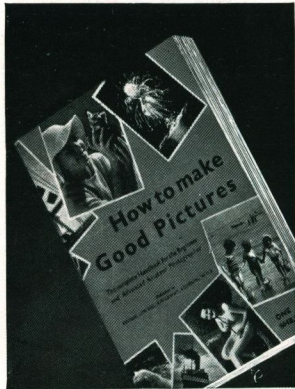
It is important to keep your negatives safe and accessible as well as your prints, and the Kodak Negative Album provides the best way of doing it. This is a "book" of 100 transparent envelopes numbered consecutively on the outside. An index at the front is similarly numbered, so that you can note down the subject of each negative as you file it away and be sure of turning any one up in an instant by a glance at your entries in the index. The negatives can be examined without removing them from their transparent envelopes. A stout cover with press button fastener completes this most useful Album.

Prices from **3/-** according to size.



Make yourself a better photographer by reading

“HOW TO MAKE GOOD PICTURES”



HOW to make good pictures? Every camera-owner wants to know, and the answer is—read this wonderful shilling book.

Here is good advice on exposure and composition; simple descriptions of the fundamentals of the photographic process; notes on indoor work, portraiture, colouring and many another photo topic—and there's a picture to nearly every one of the book's 176 pages. For compressed information, instruction and delight, "How to Make Good Pictures" stands alone. You must not miss it 1/-

“THE KODAK MAGAZINE”

The monthly journal for everyone who enjoys fine reproductions of fine photographs. In addition to its superb illustrations the Kodak Magazine tells you how to get more out of your camera, gives hints and technical tips in non-technical style, and contains articles on travel, customs, and other general topics. 3d every month, 4/6 a year post free.



"PHOTOGRAPHY"

By Dr C. E. K. Mees

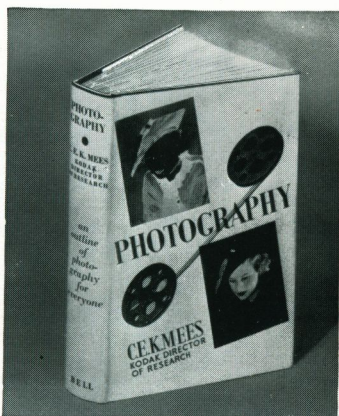
(KODAK DIRECTOR OF RESEARCH)

Based on the Royal Institution Christmas Lectures
1935-1936

"ALL ABOUT IT" by a world-famous authority. Photography as a hobby, a science, and an industry; its history from the early days of the wet-plate to the modern home movie camera; the mysteries of emulsion-making; current photographic practice; cinematography; colour photography—all dealt with in lively and lucid style.

First-class reading for beginners, advanced workers, everyone.

63 plates (3 in colour). Published by G. BELL & SONS LTD 716



INDEX

Albums	page 58-59	Library, "Kodascope"	page 32
Album, Negative	61	Measures	53
Attachment, Kodak Portrait	42	Miniature Cameras	24-26
"Bromesko" Paper	41	Mounts, etc.	60
Bromide Paper	41	"Optipod"	46
"Brownies"	7-12, 14	Outfits, Colouring	55
Camera Cases	45	Optical	43
Cameras—"Brownies"	7-12, 14	Paddle, Print	53
"Kodaks"	13, 16-29	"Photofood" Lamp	56
Chemicals, Kodak Tested	57	Pins, Push	54
Ciné "Kodagraphs"	33	Portrait Attachments	42
Clips, Film	48	Printing Papers	40-41
Developing Tanks	47-48	Printers	51
Dishes	49	Releases, Cable	44
Enlarger	52	Retouching Sundries	55
Ferrotypes	53	Roller, Print	54
Films, Kodak Cut	39	"Sashalite"	56
Films, Kodak Roll	34-38	Self-Timer	44
Filters, Sky and Colour	43	Sheaths, Cut Film	39
Frames, Printing	50	Shutters	5
Home Movies	30-33	"Solio", Self-Toning	41
"Kodaflector" Reflector	56	Tanks, Film	47-48
"Kodaks"	13, 16-29	Thermometer	49
"Kodapod"	46	Timer, Kodak	54
"Kodascope" Library	32	Trimmers, Print	50-51
"Kodatone"	41	Tripods	46
Lamps, Darkroom	53	"Velox" Paper	40
Lenses	4-5	"Velox" Colour Stamps	55

Kodak
Film
for
life-like
snaps

KODAK
"VERICHROME"

Film

Fast; double-coated; gets maximum detail in highlights and shadows; enormous latitude

KODAK
SUPER SENSITIVE
PANCHROMATIC

Film

*The film of lightning speed
For quick-action pictures and artificial light photography*

KODAK
"PANATOMIC"

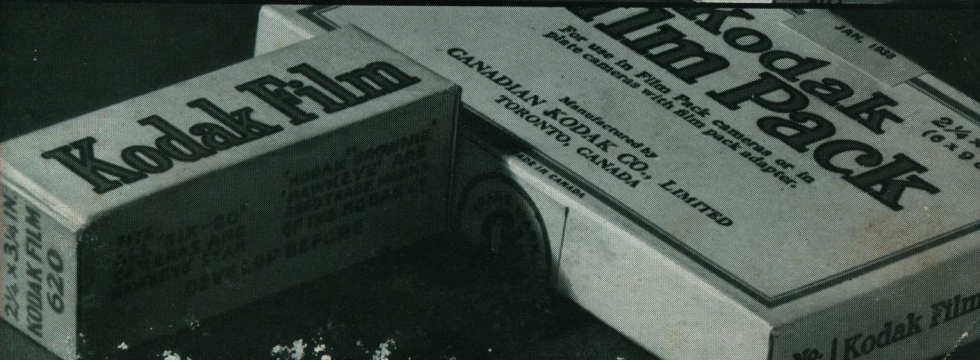
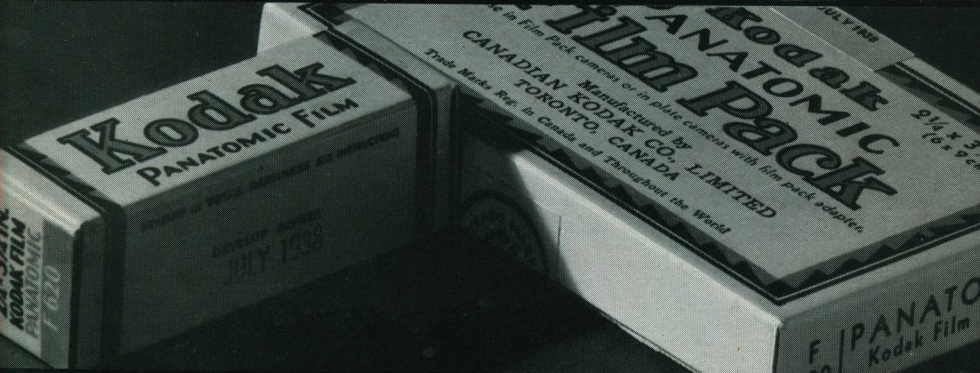
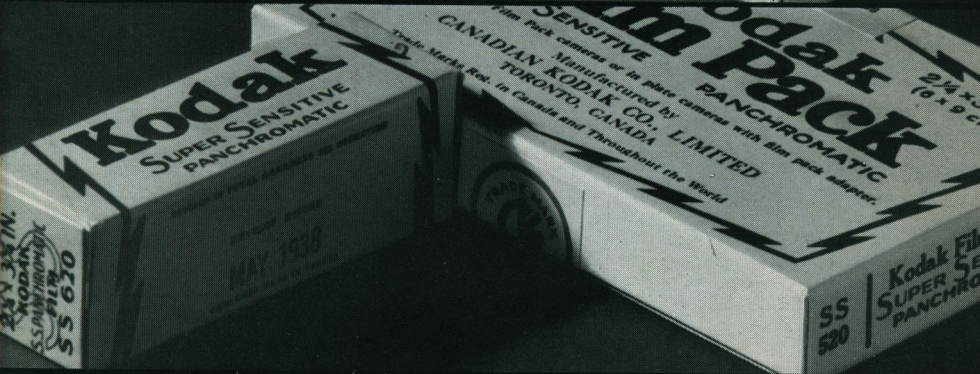
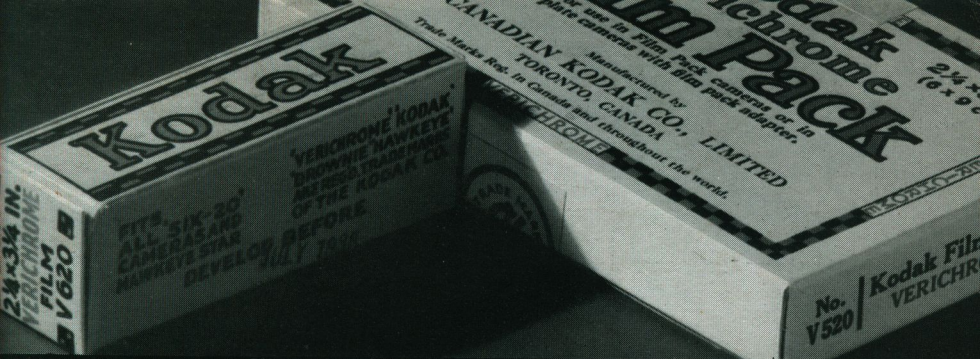
Film

*The panchromatic film of microscopically fine grain
Gives wonderful enlargements from small negatives*

KODAK
REGULAR

Film

*The original roll film, used by millions of snapshotters
Still unbeatable at the price*



KODAK

is the Trade Mark and
exclusive property of the
Kodak Company. The word
"Kodak" can lawfully be
used only in connection
with products made or
supplied by the Kodak
Company