

THE FAST CANDID

AND STUDIO CAMERA



$2\frac{1}{4} \times 3\frac{1}{4}$  in.  
6 × 9 cm

super  
TECHNIKA



# Linhof super TECHNIKA

2¼×3¼in. 6×9 cm

WITHOUT  
RANGEFINDER



WITH  
MULTIFOCUS  
RANGE- AND  
VIEWFINDER

The serious photographer, both amateur and professional, demands more from his camera than merely snapshots. He wants to use his camera for many different types of photography. The SUPER TECHNIKA is the perfect instrument to carry out the most diverse assignments. There is no field in photography which cannot be covered with great success by this camera. The engineer, architect, advertising man, scientist, journalist, these are only a few professions in which the camera helps greatly in every-day work. With the SUPER TECHNIKA camera you can take outstanding photographs not only within your profession, you can also use it for taking beautiful snapshots because you have a top-class camera which makes it so easy to take top-class pictures.

**LINHOFF CAMERAS ARE BUILT UP TO QUALITY NOT DOWN TO PRICE!**

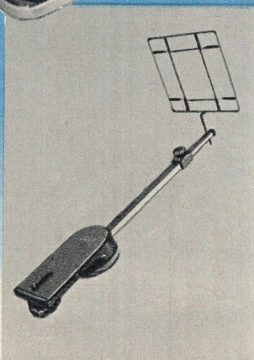
The step-up model **TECHNIKA 2¼×3¼"** without range-finder — in principle just as versatile — can, by later installation of a Multifocus range- and viewfinder be converted into a SUPER TECHNIKA 2¼×3¼". This simplified version of the famous SUPER TECHNIKA has all its other advantages and features: The triple extension bellows for close-up, macro- and telephoto work (no accessory bellows extension unit is required), the adjustments of the camera front and camera back, the famous swing back and the top-quality Technika lenses, which are interchangeable with one quick operation, the revolving camera back for vertical or horizontal composition, the new quick-change back for black-and-white and color in rapid interchange, and for snapshots, a precisely calibrated distance scale, and the wire frame finder with peep sight or a sportsfinder, both with parallax compensation.



## FOR EVERY SITUATION



The **LINHOFF** lenshood with slip-in filters for normal and telephoto lenses is extremely useful. It fits by means of step-down rings to different lens diameters. Slip-in filters for black-and-white photography are available in nine different colors and densities.

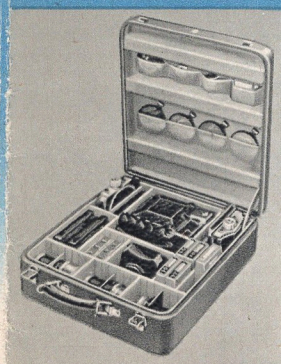


The **Close-up Focal Frame Finder** facilitates close-up photography of living objects as well as flowers, plants, etc. in an extremely simple and convenient manner. The reproduction ratios range from ½ to two times natural size.

## EASILY PORTABLE

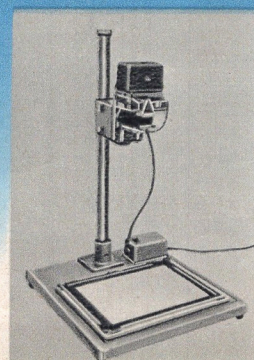


The handsome **Sports Case** holds the camera with three lenses, Rollex rollfilm adapter, lenshood and filters; it protects the equipment and allows comfortable carrying. The case is made of genuine cowhide with convenient partitions and velvet lining.

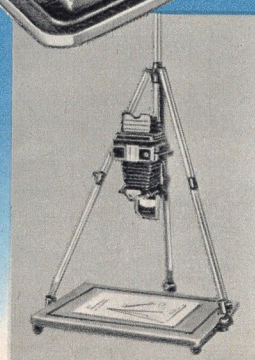


The **Attaché Case**, made of genuine cowhide or tropical-proof lightweight, is designed to hold a more comprehensive equipment. In its various partitions the equipment is arranged in such a way that each accessory can be removed instantly.

## THE TECHNIKA SYSTEM

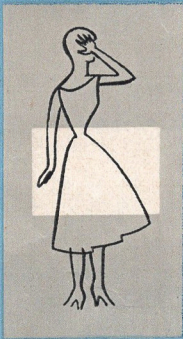
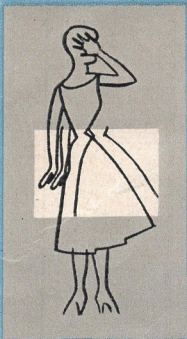


The **LINHOFF Universal Accessory Stand** for enlargements and reductions (with cold-light head); also for copying, photomicrography and macro-photography. Please ask for special brochure.



The **Accessory Enlarger Baseboard** in connection with a LINHOFF Combi Tripod is easily portable and economically priced. It is intended for reproductions, macro-photography and photomicrography as well as enlargements with the cold-light head.





**The coupled Multifocus Range- and Viewfinder for three and more lenses**

allows composition and focusing at the same time. It is of great importance in fast-action photography with the SUPER TECHNIKA  $2\frac{1}{4} \times 3\frac{1}{4}$ ". By means of the optional Anatomical Hand Grip the operation of this camera is very easy and convenient. Ease of operation is combined with elegant styling.



TAKING

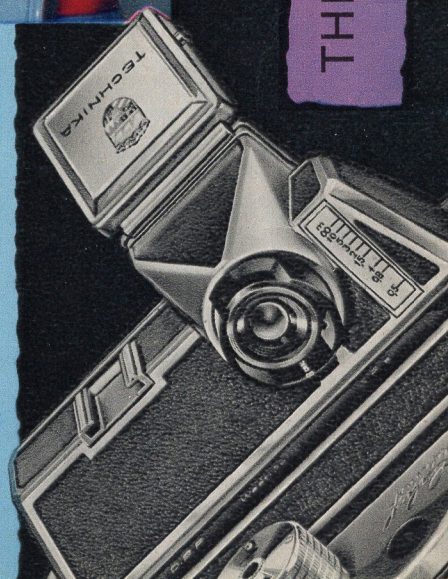
THE CAMERA FOR YEAR-ROUND PICTURE



**Combined Range- and Viewfinder and Anatomical Hand Grip**

are only a few of the many advantages offered in this truly universal hand camera with all possibilities of the adjustable view camera. Prominent photographers the world over use the SUPER TECHNIKA  $2\frac{1}{4} \times 3\frac{1}{4}$ ". You, too, will find the outstanding performance of this "Queen of Cameras" perfect for your picture taking!

Range- and viewfinder eyepiece and automatic distance scale



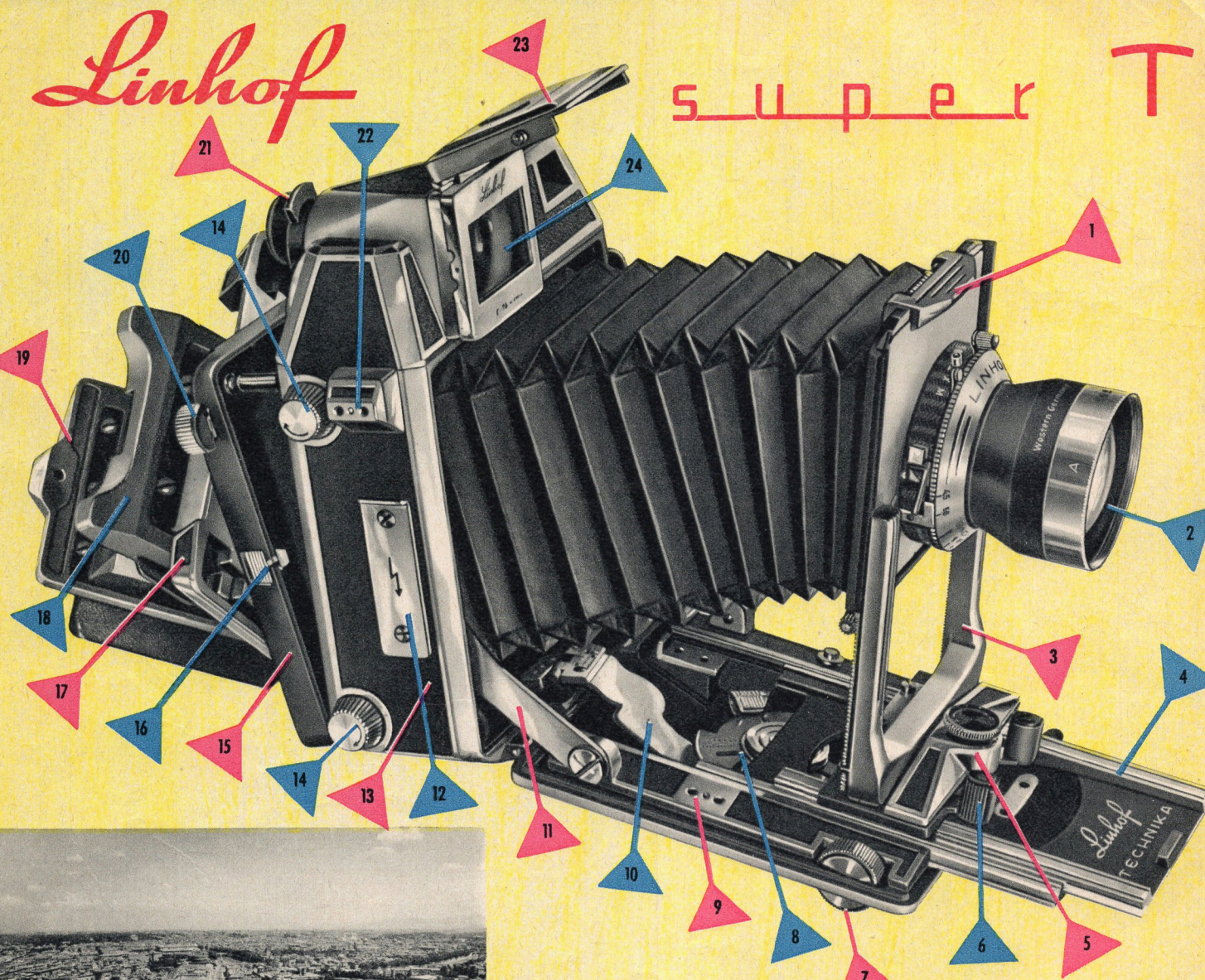


# Linhof super TECHNIKA IV

(Registered Trade-Mark)

2 1/4 x 3 1/4 in. 6 x 9 cm

1. Spring-loaded lock bar for interchangeable lensboards
2. High-quality lenses in Compur shutter (MX-synchronized; top speeds 1/400 and 1/500 sec.)
3. Solid adjustable lens standard for fast- and long-focus lenses
4. Focusing track with triple extension
5. Adjusting screw for lens standard tilt
6. Spring-loaded pull-out grips for lens standard
7. Focusing knob at left- and right-hand side of drop bed
8. Tri-cam disk for automatic rangefinder coupling of three lenses
9. Socket for two-pin cable release
10. Transfer arm of rangefinder mechanism
11. Spring-loaded bed struts for dropping bed to normal or wide angle position
12. Flash gun bracket
13. Camera body of light-metal alloy with satin-chrome finish
14. Lock screws for swing frame (one on each corner)
15. Swing frame, adjustable in any direction
16. Spring-loaded catch for swing frame
17. Revolving interchangeable camera back for horizontal or vertical composition
18. Spring-back ground glass frame
19. Hinged focusing hood
20. Flip-over lever of quick-change camera back mechanism
21. Finder eyepiece with parallax compensation
22. Two-pin socket for cable release (one on each side)
23. Protective cover of Multifocus range- and viewfinder
24. Large front lens of Multifocus range- and viewfinder for three or more lenses with format mask



## The exclusive Zeiss Lenses:

53 mm f/4.5 Technika **BIOGON**, famous wide-angle lens made by Carl Zeiss, Oberkochen (West Germany), in fully synchronized Compur shutter, 1/400 sec., for super wide-angle pictures; especially useful in crowded rooms, narrow streets as well as for panorama and wide-screen pictures.

## TOP-QUALITY PICTURES THROUGH TOP-QUALITY LENSES

100 mm f/2.8 Technika **PLANAR** in fully synchronized Compur shutter, 1/400 sec. A universal lens of normal focal length, especially designed for color transparencies of utmost crispness and definition. The unexcelled lens of superior quality for any type of photography with the SUPER TECHNIKA 2 1/4 x 3 1/4".

180 mm f/4.8 Technika **SONNAR** in fully synchronized Compur shutter, 1/400 sec. A true telephoto lens of superb characteristics, free from distortions, even when used fully open, for top results in architecture, portrait, commercial or technical photography, and extremely suitable for wild-life photography.

All high-class lenses of the entire German optical industry are available in various focal lengths from 47 mm super wide-angle to 360 mm telephoto lens. (See listing at right.)

## Unlimited Possibilities even for the Amateur

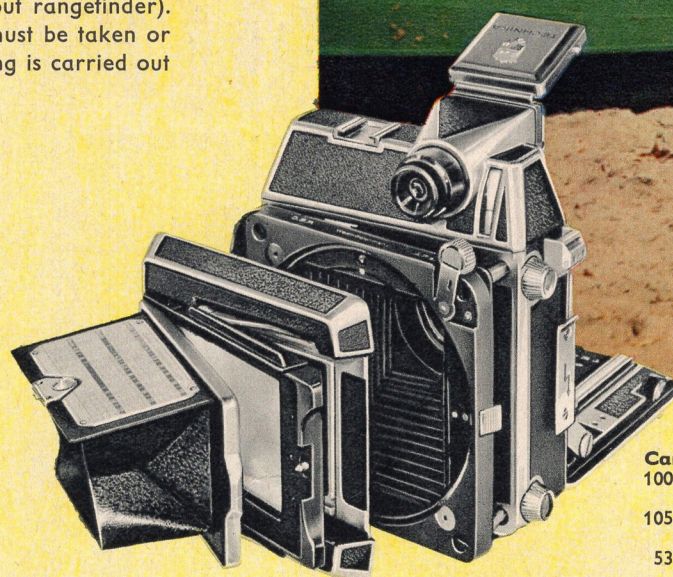
The SUPER TECHNIKA is a true universal camera in contrast to the rigid type of a camera. It really meets all requirements and, despite its many refinements, it is easy to operate. Even the novice photographer will be able to use this fine camera by following the very detailed operating instructions, because the camera is clearly designed and its refinements are absolutely logical.

A slight pressure on the lock slide of the camera bed: The solid drop bed which protects the lens and the interior parts of the camera opens and snaps in position. Now the lens standard is pulled out on the upper track by the two spring-loaded grips until it snaps into the infinity catch and the camera is ready for focusing and taking the picture. Distance and composition are indicated by the Multifocus range- and viewfinder (or by the frame finder of the TECHNIKA without rangefinder). For difficult photographs, for instance when extreme close-ups must be taken or when camera adjustments are necessary, composition and focusing is carried out on the large micrograin ground glass.

## Color Photography

— important today — is bound to gain in importance in the future. Results are determined by the original film size. Thus, the 2 1/4 x 3 1/4 format assures superior definition and color rendition. This is another reason why you should consider the SUPER TECHNIKA 2 1/4 x 3 1/4, which has thousands of enthusiastic friends the world over, as your own all-round camera.

For extreme wide-angle lenses you do not need a second camera. Without any difficulties or costly accessories you can use the superb 53 mm f/4.5 Technika Biogon or the 47 mm f/8 Technika Super-Angulon. The extreme angle effect of these lenses is really striking. The enormous depth of field permits, on the one hand, quick snapshots while, on the other hand, the lenses are ideally suited for pictorial photography especially in the field of architecture. For square projection slides a semi-automatic rollfilm adapter for 12 pictures in the size 2 1/4 x 2 1/4 is available.



The superior color quality of the 2 1/4 x 2 1/4 transparency is fully revealed in the projection.

## LENSES AND ACCESSORIES FOR SUPER TECHNIKA AND TECHNIKA 2 1/4 x 3 1/4" (6 x 9 cm)

**Carl Zeiss, Oberkochen**  
100 mm f/2.8 Technika Planar in Compur shutter 1/400 sec. UCKZ  
105 mm f/3.5 Technika Tessar in Compur shutter 1/500 sec. UCK  
53 mm f/4.5 Technika Biogon in Compur shutter 1/500 sec. UCAZ  
180 mm f/4.8 Technika Sonnar in Compur shutter 1/400 sec. UCUZ

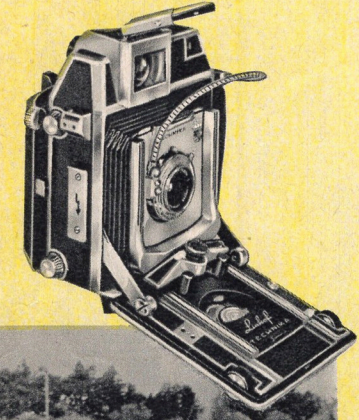
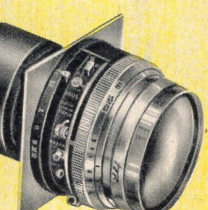
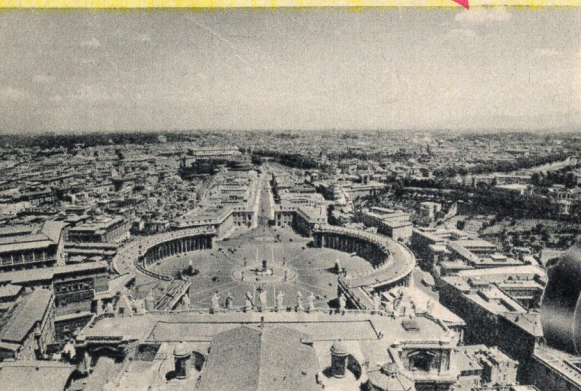
**Jos. Schneider & Co., Optical Works, Bad Kreuznach**  
105 mm f/2.8 Technika Xenotar in Compur shutter 1/400 sec. UCAS  
105 mm f/3.5 Technika Xenar in Compur shutter 1/500 sec. UCA  
105 mm f/5.6 Technika Symmar in Compur shutter 1/500 sec. UCY  
65 mm f/6.8 Technika Angulon in Compur shutter 1/500 sec. UCAG  
47 mm f/8 Technika Super-Angulon UCOG in Compur shutter 1/500 sec.

with wide-angle focusing attachment for SUPER TECHNIKA 2 1/4 x 3 1/4 (6 x 9) UCWA  
65 mm f/8 Technika Super-Angulon UCUW in compur shutter 1/500 sec.  
180 mm f/5.5 Technika Tele-Xenar in Compur shutter 1/500 sec. UCEG

180 mm f/5.5 Technika Tele-Arlon in Compur shutter 1/500 sec. UCEA  
240 mm f/5.5 Technika Tele-Arlon in Compur shutter 1/500 sec. UCIA  
360 mm f/5.5 Technika Tele-Xenar in Compound shutter 1/500 sec. BAPE  
Mounting tube for 360 mm Tele-Xenar for use with SUPER TECHNIKA 23 BZY  
**Voigtlander A.G., Braunschweig**  
105 mm f/4.5 Technika Apo-Lanthar in Compur shutter 1/500 sec. UCL  
180 mm f/5.5 Technika Telomar in Compur shutter 1/500 sec. UCUG  
240 mm f/5.5 Technika Telomar in Compur shutter 1/500 sec. UCIT

**G. Rodenstock, Optical Works, Munich**  
180 mm f/4.5 Technika Rotelar in Compur shutter 1/500 sec. UCAR  
All Compur shutters are fully synchronized for M and X delay.  
**Rollax Rollfilm Back** for 8 exposures VAB 2 1/4 x 3 1/4"  
**Rollax Rollfilm Back** for 12 exposures VABS 2 1/4 x 2 1/4"  
Double cutfilm and plate holder size 2 1/4 x 3 1/4" or 6.5 x 9 cm with ejector VAM or VAL

Graphic filmback adapter size 2 1/4 x 3 1/4" VAF  
Extra film holder for Rollax rollfilm back KILL  
Sportsfinder to fit accessory clip of SUPER TECHNIKA 2 1/4 x 3 1/4" SO  
Wire frame finder with peep sight for TECHNICA 2 1/4 x 3 1/4" without rangefinder SAID  
Plexiglas mask with field of telephoto lenses for use on wire frame finder SAIDZ  
Lenshoods in various sizes for all available lenses  
Filters for black-and-white photography fitting the LINHOF lenshood  
Slip-on spirit level WAS  
Lensboards for all lenses WEX  
Neck strap with anti-slip pad WEB  
Flash cable with elbow plug WER  
Close-up focal frame finder NAH  
**Anatomical Grip** adjustable and detachable with built-in cable release GRIF  
**Attache Case**, genuine cowhide, plush-lined, with compartments for complete outfit XABY  
**Shoulder Case**, genuine cowhide, with zipper and shoulder strap, for complete outfit XOX  
**Sports Case**, genuine cowhide, with zipper and shoulder strap, for camera, 3 lenses, Rollax, small accessories XIF



Wide-angle lenses are used when a large area must be covered at close range. (SUPER TECHNIKA in wide-angle position, drop bed inclined 15°, standard tilted back 15°, upper track in wide-angle position.)

## WIDE ANGLE



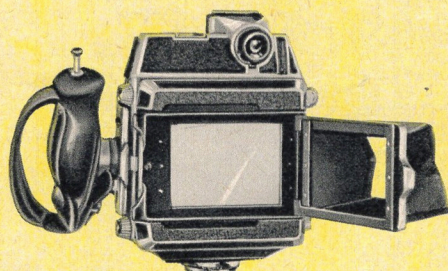
Perspective correction such as shown here can be achieved only by means of the elevation of the optical axis or by using the swing frame of the camera.

## PERSPECTIVE CORRECTION



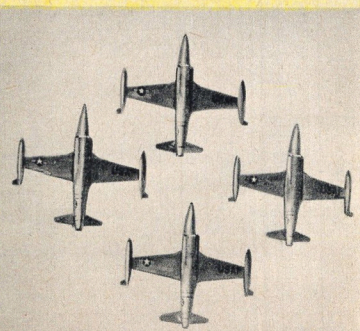
The triple extension bellows (12 in.) of the SUPER TECHNIKA 2 1/4 x 3 1/4" allows extreme close-ups and macro-photographs without accessories, either 1:1 or with magnification up to 3.5 times. (No accessory bellows required.)

## MACRO-PHOTOGRAPHY



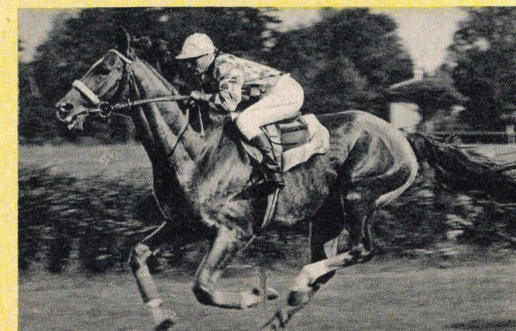
For portrait and commercial photographs a long-focus or telephoto lens is desirable. Composition can be carried out on the ground glass. (Illustration above shows focusing ground glass with hinged focusing hood in open position.)

## STUDIO PHOTOGRAPHY



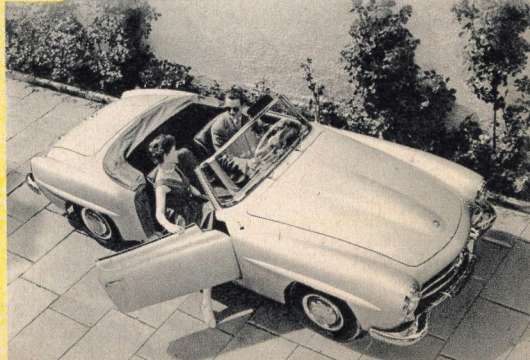
For all sorts of snapshots and action photography the fast shutter speeds of 1/400 sec. or 1/500 sec. are absolutely necessary.

## AERIAL PHOTOGRAPHY



Sports photographs (especially with telephoto lens) are a further field in which the SUPER TECHNIKA 2 1/4 x 3 1/4" with its Multifocus range- and viewfinder, anatomical grip and 1/400 sec. shutter is used with outstanding success.

## SPORTS PRESS ACTION



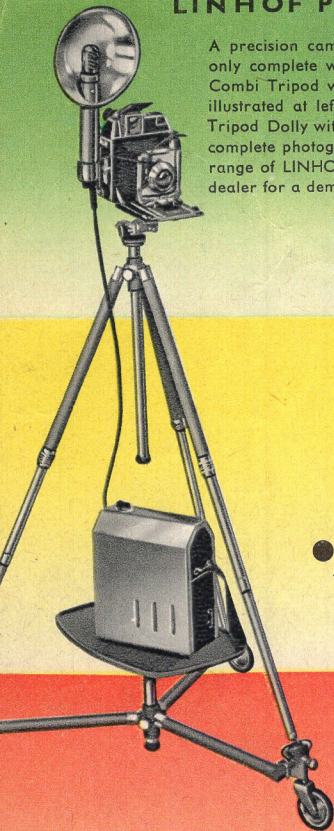
Photograph by Photo-Mechatronic, Paris, France





## LINHOF PRECISION TRIPODS

A precision camera, such as the SUPER TECHNIKA, is only complete with a solid tripod, such as the LINHOF Combi Tripod with Reporter Pan Head or Tilt Head as illustrated at left. For use in the studio the light-weight Tripod Dolly with Accessory Tray is an ideal addition to a complete photographic outfit. Special leaflets on the wide range of LINHOF tripods are available. Please ask your dealer for a demonstration!



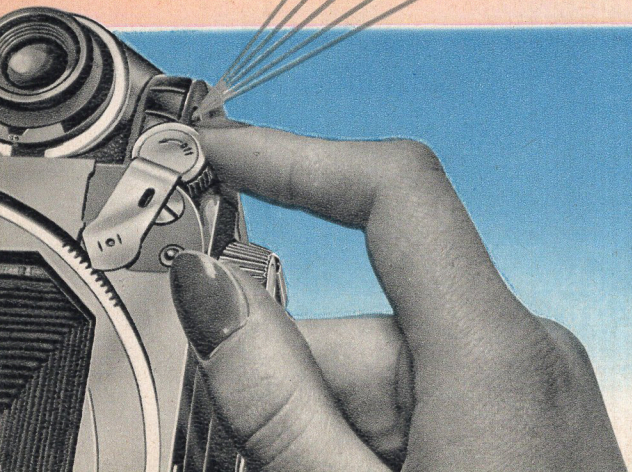
## RAPID INTERCHANGE IN SECONDS

- from  $2\frac{1}{4} \times 3\frac{1}{4}$ " to  $2\frac{1}{4} \times 2\frac{1}{4}$ "
- from cut film to glass plates
- from cut film to film pack
- from cut film to roll film
- from black-and-white to color negative or positive
- No second camera for color photographs required



A simple flip of the lever on the **Quick-Change Back** allows instant interchange of the ground glass back against the roll film back or of several roll film backs loaded with color and black-and-white film among each other.

The **LINHOF Cut Film Holder**, which slides into the Universal Spring Back, is particularly convenient when single photographs on cut film or plates  $2\frac{1}{4} \times 3\frac{1}{4}$ " are taken. This type of sensitized material allows individual development by inspection.



Ask your franchised LINHOF dealer for a demonstration: