

Honeywell Pentax

CAMERAS, LENSES AND ACCESSORIES








TABLE OF CONTENTS	PAGE
Honeywell Pentax Spotmatic II	2
Honeywell Pentax ES II	5
Honeywell Pentax Spotmatic IIa	6
Honeywell Pentax Spotmatic	8
Honeywell Pentax Data II	8
Honeywell Pentax SP 500	9
Honeywell Pentax Spotmatic II Motor Drive	10
Honeywell Pentax 6 x 7	11
The Anatomy of a Honeywell Pentax ..	12
Super-Multi-Coated Takumar Lenses ..	14
Exposure Meters	22
Filters, Lenshoods, Camera Cases	23
Close-Up Accessories	24
Miscellaneous Accessories	28

The Standard of Excellence

Honeywell Pentax SPOTMATIC II

If you expect top performance and great results — day in and day out in every situation — then the Spotmatic II is the camera for you. This classically compact Pentax design combines handling ease with the world's best metering system and a superior multiple-layer coated lens.

With any of 22 super-multi-coated lenses available for the Spotmatic II, you can shoot into the sun or take strongly backlit pictures without worrying about flare or ghost images. You'll get sharp, crisp pictures with truer color and more detail under conditions you wouldn't attempt with other cameras. (For more information on Super-Multi-Coated Takumar lenses, see page 14.) The full-format integrating metering system incorporated into this camera is easy to use and highly accurate under the vast majority of shooting conditions. Select perfect exposures as you compose. The stop-down system also gives you depth-of-field preview so you can choose exactly which portions of your photo you want in crisp focus.

Other features include built-in self-timer; automatic exposure counter reset; X, FP hot shot with shock-preventing safety switch; ASA range of 20 to 3200; 20 or 36-exposure reminder dial, and sure takeup loading spool.

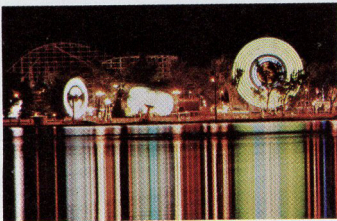
Cat. No. **7132** Satin chrome Honeywell Pentax Spotmatic II with 55mm f/1.8 Super-Multi-Coated Takumar lens\$349.50

Cat. No. **7136** Satin chrome Honeywell Pentax Spotmatic II with 50mm f/1.4 Super-Multi-Coated Takumar lens\$389.50

Cat. No. **7138** Satin black Honeywell Pentax Spotmatic II with 50mm f/1.4 Super-Multi-Coated Takumar lens\$399.50

Cat. No. **7140** Satin chrome Honeywell Pentax Spotmatic II camera body\$239.50

Cat. No. **7141** Satin black Honeywell Pentax Spotmatic II camera body\$249.50







For Photo Perfectionists

Honeywell Pentax ES II

Newest of the Honeywell Pentax cameras, the ES II is the world's first 35mm SLR with a fully automatic electronic shutter system.

You simply focus and shoot. The patented Pentax memory device computes and delivers an infinite number of precise exposures between 8 and 1/1000 second — automatically. If 1/555 second will give you the best possible exposure, that's exactly what you get.

No needles to match. No time-consuming computing of exposures when your subject moves from sunlight to shadow. So fast and foolproof even a beginner can take great pictures.

Because the automation is built into the body of this camera, no special lenses are needed. You can use any of the Takumars you already own or any of the 22 flare-taming Super-Multi-Coated Takumars now available. Extension tubes, microscopes and special macro lenses can also be used automatically.

And there are plenty of built-in creative options. For special effects, you can automatically program for under or over-exposure. Or you can override the automation completely by flipping the dial to manual.

Be assured the Pentax engineers didn't let automation compromise the classic Pentax styling and "feel." All electronic elements are tucked neatly into the camera's baseplate. As a result, the ES II is less than one-quarter inch taller and only six ounces heavier than the Spotmatic II.

Other fine features on the ES II include: Self-timer, FP or X sync; PC terminals; battery check; rapid rewind lever, X sync hot shoe, and a special screen that automatically closes off viewfinder during long exposures.

Another fully automatic electronic shutter system camera is the Honeywell Pentax ES. It includes all the fine features of the ES II except self-timer and special screen that closes off viewfinder during long exposures.

Cat. No. **7186** Satin black Honeywell Pentax ES II with 50mm f/1.4 Super-Multi-Coated Takumar lens ..\$649.50

Cat. No. **7187** Satin black Honeywell Pentax ES II with 55mm f/1.8 Super-Multi-Coated Takumar lens ..\$599.50

Cat No. **7188** Satin black Honeywell Pentax ES II body.\$489.50

Cat. No. **7182** Satin black Honeywell Pentax ES with 50mm f/1.4 Super-Multi-Coated Takumar lens ..\$624.50

Cat. No. **7185** Satin black Honeywell Pentax ES with 55mm f/1.8 Super-Multi-Coated Takumar lens ..\$574.50



A Unique System for Perfect Flash

Honeywell Pentax SPOTMATIC IIa

The Spotmatic IIa, with built-in Strobo-Eye light sensor, is the basic unit in the world's first and only completely automatic flash system. If you ever use electronic flash, this is the camera designed especially for you.

When you team the Spotmatic IIa with a 462, 772 or 882 Honeywell Auto/Strobonar, you get perfectly exposed flash pictures no matter how you aim the flash unit — on-camera, off-camera or bounce. The built-in Strobo-Eye sensor reads the light your subject receives from the flash unit. It measures exactly the correct amount of light for a good exposure and then automatically turns the flash unit off.



The Spotmatic IIa also allows you the creative freedom of depth-of-field control with flash. With any of the three special Auto/Strobonars, you have a choice of three f/stops and three operating ranges for each film speed. And this system is practically foolproof with a "Green Light" for pretest and verification of good exposure. To pretest, just aim the camera and flash as you intend to use them and fire the open flash button. If there's enough light for good exposure, the Strobo-Eye will activate the Green Light on the flash unit. This light will come on and stay on to verify good exposure. If the lighting is inadequate, the Green Light won't show. Make a change in aperture, distance or flash technique and test again.

The Spotmatic IIa has every fine feature of the Spotmatic II including: full-format through-the-lens metering system; flare-taming Super-Multi-Coated lens; built-in self-timer; automatic exposure counter reset; X, FP hot shoe with shock-preventing safety switch; ASA range of 20 to 3200; 20 or 36 exposure reminder dial, and sure takeup loading spool.

- Cat. No. **7137** Satin chrome Honeywell Pentax Spotmatic IIa with 50mm f/1.4 Super-Multi-Coated Takumar lens\$419.50
- Cat. No. **7139** Satin black Honeywell Pentax Spotmatic IIa with 50mm f/1.4 Super-Multi-Coated Takumar lens\$429.50
- Cat. No. **7142** Satin chrome Honeywell Pentax Spotmatic IIa camera body\$269.50
- Cat. No. **7143** Satin black Honeywell Pentax Spotmatic IIa camera body\$279.50



To complete the Strobe-Eye system, you have a choice of three unique Honeywell automatic electronic flash units. The smallest and most compact is the Auto/Strobonar 462. It's a hot shoe unit that can be charged for a 20-exposure roll of film in less than 15 minutes. Recycles in less than 9 seconds with freshly charged batteries.

The Auto/Strobonar 772 is a powerful unit that gives enough light for perfect exposures out to 40 feet away — automatically. It can be powered by battery, AC, or a combination of both. You get a minimum of 80 flashes per charge with rechargeable Ni-Cad batteries. Flash duration is from 1/1,000 to 1/70,000 second.

The Auto/Strobonar 882 has been designed for photographers who shoot a lot and need fast recycling. It gives up to 1,000 flashes per high voltage battery. Recycles in 2-4 seconds on battery; 10 seconds on AC.

Cat. No. **192** Auto/Strobonar 462 with 36" shutter cord, rapid charge\$129.95

Cat. No. **178** Auto/Strobonar 772 with 10' AC/Charger cord\$159.95

Cat. No. **169** Auto/Strobonar 882 with ProPak, power cord, 10' AC cord (less battery)\$189.95

The World's Best-Selling
Honeywell Pentax
SPOTMATIC



This is the world's best-selling fine camera. Its clean, classic design has become the model for many other quality SLR's.

The Spotmatic's full-format integrating metering system reads the in-focus image on the ground glass made by light passing through the taking aperture of the lens — precisely the same light the film sees. Regardless of the focal length of the lens, you're sure of properly exposed pictures every time. This means you're free to concentrate on composition and the truly creative aspects of fine photography.

Other features include; eye-level pentaprism finder with Fresnel lens; shutter speeds from 1 to 1/1,000 second, plus Bulb; 20 to 1600 ASA range; self-timer; auto-reset counter; ratchet film-advance lever; and X, FP flash terminals.

Cat. No. **884** Honeywell Pentax Spotmatic with 55mm f/1.8 Super-Takumar lens, satin chrome finish . . \$299.50

For the Record

Honeywell Pentax
DATA II

This unique camera lets you automatically record time, place and other information in the upper left-hand corner of your photo as you click the shutter. A detachable watch with second hand and a detachable memo plate are the extras here. Otherwise, the Data II is just like the Spotmatic II with full-format through-the-lens metering system; flare-taming Super-Multi-Coated lens; built-in self-timer; automatic exposure counter reset; X, FP hot shoe with shock-preventing safety switch; ASA range of 20 to 3200; 20 or 36-exposure reminder dial, and sure takeup loading spool.

Cat. No. **7144** Honeywell Pentax Data II body with watch and memo plate \$499.50

The Start of Something Big
Honeywell Pentax
SP 500



If you've got an eye for great results, but your budget is a bit on the slim side, then this is a camera you should consider.

It offers classic Pentax craftsmanship and design, plus most of the features of the Spotmatic — at a lower price. The world's best full-format through-the-lens metering system makes good exposures fast and easy. Trim styling, conveniently located controls, precise handling and the naturally good "feel" unmistakably identify this camera as a member of the Honeywell Pentax family.

The special SP 500 includes: eye-level pentaprism finder with Fresnel lens; 20 to 1600 ASA range; auto-reset counter; ratchet film-advance lever; X, FP flash terminals and 55mm f/2.0 Super-Takumar lens. Top shutter speed is 1/500 and there is no self-timer.

Cat. No. **7131** Special Honeywell Pentax SP 500 with 55mm f/2.0 Super-Takumar lens, satin chrome finish
\$275.50



Honeywell Pentax Data II



The Action Special

Honeywell Pentax SPOTMATIC II MOTOR DRIVE

When you need three frames a second — 180 photos a minute — you need this super-fast motorized Pentax. The compact motor drive unit will fit any Pentax Motor Drive camera. You can buy the camera alone for conventional use and add a drive later, if you prefer.

A cordless grip holds the rechargeable Ni-Cad battery. Basic Set 36 takes either 20 or 36-exposure rolls. Bulk film back that accommodates 250 exposures is also available. Without the motor drive unit, the camera is identical to the Spotmatic II with the same classic design, superb metering system and flare-taming Super-Multi-Coated Takumar lens. Other features include: shutter speeds from 1 to 1/1000 seconds, plus Bulb; 20 to 3200 ASA range; built-in self-timer; automatic exposure counter reset; X, FP hot shoe with shock-preventing safety switch; 20 or 36-exposure reminder dial, and sure takeup loading spool.

Cat. No. **7072** Honeywell Pentax Spotmatic II Motor Drive Camera with 50mm f/1.4 Super-Multi-Coated Takumar lens\$494.00

Cat. No. **7073** Honeywell Pentax Spotmatic II Motor Drive Set 36\$939.50





The Pro's Choice

Honeywell Pentax 6x7

Eye-level handling ease, plus 50 percent more useable negative is what you get with the 6 x 7 ideal format Pentax. Composing is done with the camera, not by time-consuming and expensive cropping.

It uses 120 or 220 roll film giving 10 or 21 exposures. An electronically-timed focal plane shutter assures you of accurate shutter speeds up to 1/1,000 second.

The 6 x 7 is a true systems camera providing the versatility of a dozen Super Takumars — this format's only Fish-Eye to a fast 1000mm. It handles beautifully on location, as well as in the studio.

Other features include: bright, fine-lined, double Fresnel screen that lets you zero in sharply even at the outer picture area; removable eyepiece for correction lenses; 120/220 reminder window that automatically tells you which pressure plate you're using; auto-reset counter; X, FP flash terminals; and dual bayonet lens mounts — inner bayonet for lenses up to 300mm; outer bayonet for longer.

- Cat. No. **7201** 6 x 7 Camera Body\$499.50
- Cat. No. **7210** Pentaprism\$170.00
- Cat. No. **7511** Folding Hood\$57.00
- Cat. No. **7223** 75mm f/4.5 Super-Multi-Coated Takumar 6 x 7\$310.00
- Cat. No. **7226** 105mm f/2.4 Super-Multi-Coated Takumar 6 x 7\$379.50



The Anatomy of a Honeywell Pentax

A detailed look at the Spotmatic II

Although controls and features differ somewhat from camera to camera, all Honeywell Pentax SLR's feature the classic design and clean styling of the Spotmatic II.

- 1 Warning Signal shows red when shutter/film speed settings are beyond meter's range.
- 2 Shutter Speed Dial Settings for Bulb, Electronic Flash, 1 to 1/1000 sec.
- 3 Film Speed Setting from ASA 20-3200
- 4 Ratchet-type Rewind Lever advances film and cocks shutter
- 5 Exposure Counter automatically resets when back is opened
- 6 Cocked Indicator shows red when shutter is cocked
- 7 Shutter Release Button threaded for use with cable release
- 8 Film type and 20 or 36-exposure reminder
- 9 Rapid Rewind Crank
- 10 Rewind Knob opens back automatically when raised
- 11 Hot Shoe Sync Selector



- 12 Preview Lever manually closes diaphragm for checking exact depth-of-field
- 13 Diaphragm Ring for selecting aperture settings from f/1.4 to f/16 (f/1.8 to f/16 on f/1.8 model)
- 14 Depth-of-field Scale
- 15 Diaphragm and Distance Index Mark
- 16 Distance Scale in feet and meters
- 17 Focusing Ring
- 18 Rapid Rewind Release Button
- 19 Hot Shoe receptacle with "hot" flash contact
- 20 Tripod Mounting Receptacle
- 21 Pentaprism Housing
- 22 D-Ring Lug
- 23 Self-Timer Release Button (under lever)
- 24 5-13 sec. Self-Timer Lever
- 25 X Flash Terminal for electronic flash synch. at 1/60 sec.
- 26 FP Flash Terminal for flash bulb synch. at all speeds
- 27 Film Cassette Chamber
- 28 Focal Plane Shutter Curtains of special rubberized silk
- 29 Extra Wide Film Rail for flat film travel
- 30 Film Pressure Plate
- 31 Film Sprockets
- 32 Sure-load takeup spool
- 33 Mercury Battery to power exposure system
- 34 Film retainer roller
- 35 Viewfinder, Frame accepts eyepiece accessories
- 36 Super-Multi-Coated lens
- 37 Meter Switch stops down for exposure reading and depth-of-field preview.

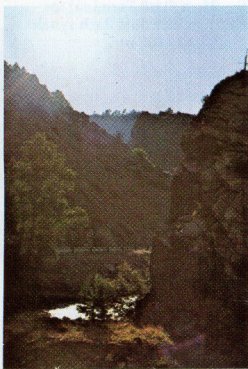
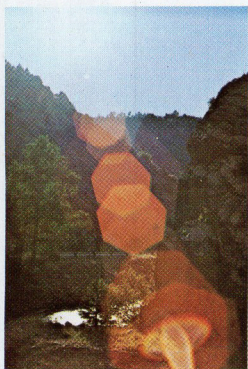


Super-Multi-Coating

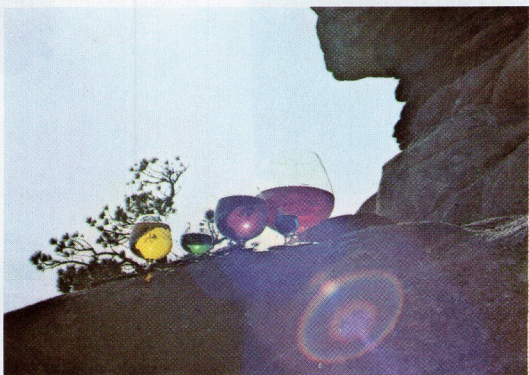
Why Takumar Lenses deliver the sharpest, brightest, most vibrant results

Each pair of unretouched photos below was shot by the same photographer, at the same location, at the same time. Photos on the left were shot with one of the finest conventionally coated lenses available. Photos on the right demonstrate the clearcut superiority of Super-Multi-Coated Takumar lenses.

This exclusive coating — developed for spacecraft windows and precision optical machines — reduces internal reflections to a low of 0.2% per air-to-glass surface. As a result, more light is transmitted to your film. Flare, fog



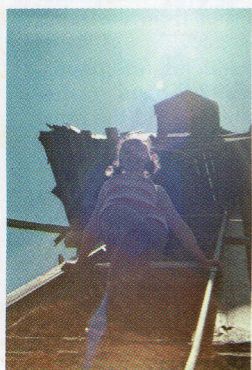
REDUCED FLARE AND GLARE



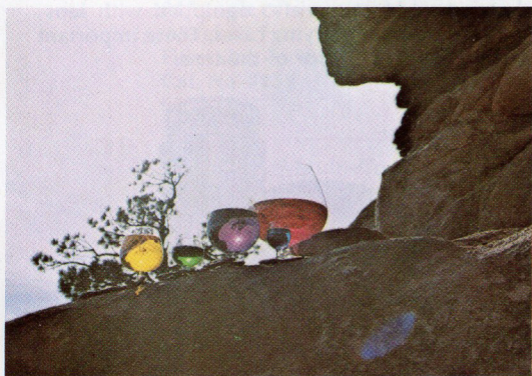
MORE VIBRANT

and ghost images are virtually eliminated. Image contrast is greatly improved, even in detail areas. Color balance is also improved since the visible light is distributed more evenly over the entire light spectrum.

No conventionally coated lens in the world can match the performance of a Super-Multi-Coated Takumar. Shoot toward the sun or reflective surfaces. Take strongly back-lit photos. Tackle the really tough lighting situations. If your lens is a Super-Multi-Coated Takumar, you'll always get crisp detail, sharp contrast, vibrant color results.



MUCH SHARPER DETAIL



VIBRANT COLOR



17mm



28mm



50/55mm



85mm

A Full System of Quality Lenses **22 interchangeable Super-Multi-Coated Takumars for every special effect**

There is virtually no limit to the photographic effects you can achieve with this full system of interchangeable lenses. The series of photographs above shows the relative angle of view of lenses in just a few of the many focal lengths available. All pictures were shot from the same location — only the lenses were changed.

Asahi Optical Company has been producing fine photographic lenses since 1932. Painstaking hand craftsmanship, the highest quality raw materials and the most advanced technological know-how are combined in the manufacture of each Super-Multi-Coated Takumar.

All mechanical components are precision machined to microscopic tolerances. Specially lubricated, wear-resistant metals assure consistently accurate apertures year after year. Screw mounts are the most precise method of holding a lens firmly in place. Perfectly matched threaded mountings on Super-Multi-Coated Takumar make changing lenses quick and easy — even in the dark.

To protect the fine optics, each lens is supplied with a front and rear cap. Most are also equipped with lens-hoods and rugged leather carrying cases. These important items are included in the price of the lens.

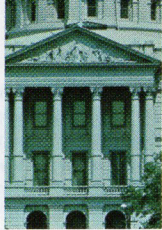




135mm



200mm



400mm



1000mm

17

17mm Super-Multi-Coated Takumar f/4.0;
Fully automatic; 11 elements;
Minimum aperture f/22;
Minimum focus 7.9 in.;
160° angle of view;
Weight 7.4 oz.; Length 1.25 in.;
UV, Y2, and 02 filters built-in; Case;
Cat. No. **7251**
\$319.50

20

20mm Super-Multi-Coated Takumar f/4.5;
Fully automatic; 11 elements;
Minimum aperture f/16;
Minimum focus 7.8 in.;
94° angle of view;
Weight 8.1 oz.; Length 1.75 in.;
Filter size — 77mm; case and lenshood;
Cat. No. **7252**
\$289.50

24

24mm Super-Multi-Coated Takumar f/3.5;
Fully automatic; 9 elements;
Minimum aperture f/16;
Minimum focus 10 in.;
84° angle of view;
Weight 8.7 oz.; Length 1.8 in.;
Filter size — 58mm; case and lenshood;
Cat. No. **7253**
\$259.50

28

28mm Super-Multi-Coated Takumar f/3.5;
Fully automatic; 7 elements;
Minimum aperture f/16;
Minimum focus 15.75 in.;
75° angle of view;
Weight 7.3 oz.; Length 1.7 in.;
Filter size — 49mm; case and lenshood;
Cat. No. **7254**
\$199.50

35

35mm Super-Multi-Coated Taumar f/2.0;
Fully automatic; 8 elements;
Minimum aperture f/16;
Minimum focus 15 in.;
63° angle of view;
Weight 8.5 oz.; Length 2.1 in.;
Filter size — 49mm; case and lenshood;
Cat. No. **7255**
\$259.50

35 35mm Super-Multi-Coated Takumar f/3.5;
Fully automatic; 5 elements;
Minimum aperture f/16;
Minimum focus 1.5 ft.;
63° angle of view;
Weight 5.3 oz.; Length 1.33 in.;
Filter size — 49mm; case;
Cat. No. **7256**
\$144.50

50 50mm Super-Multi-Coated Takumar f/1.4;
Fully automatic; 7 elements;
Minimum aperture f/16;
Minimum focus 1.5 ft.;
46° angle of view;
Weight 8.1 oz.; Length 1.5 in.;
Filter size — 49mm; no case;
(Standard lens for Spotmatic II and IIa)
Cat. No. **7249**
\$150.00

50 50mm Super-Multi-Coated
Macro-Takumar f/4.0;
Fully automatic; 4 elements;
Minimum aperture f/22;
Minimum focus 9.5 in. (.5 magnification);
46° angle of view;
Weight 8.2 oz.; Length 2.1 in.;
Filter size — 49mm; case;
Cat. No. **7258**
\$189.50

55 55mm Super-Takumar f/2.0;
Fully automatic; 6 elements;
Minimum aperture f/16;
Minimum focus 1.5 ft.;
43° angle of view;
Weight 7.1 oz.; Length 1.5 in.;
Filter size — 49mm; no case;
(Standard lens for SP 500)

55 55mm Super-Multi-Coated Takumar f/1.8;
Fully automatic; 6 elements;
Minimum aperture f/16;
Minimum focus 1.5 ft.;
43° angle of view;
Weight 7.1 oz.; Length 1.5 in.;
Filter size — 49mm; no case;
(Standard lens for Spotmatic II and IIa)
Cat. No. **7250**
\$110.00

85-210

85-210mm Super-Multi-Coated
Zoom-Takumar f/4.5;
Fully automatic; 11 elements;
Minimum aperture f/22;
Minimum focus without close-up
attachment lens 11.5 ft., with close-up
attachment lens 6.2 ft.;
28.5°-11.5° angle of view;
Weight 24.9 oz.; Length 8.7 in.;
Filter size — 58mm; case, lenshood,
Close-up attachment lens;
Cat. No. **7261**
\$519.50

85

85mm Super-Multi-Coated Takumar f/1.8
Fully automatic; 6 elements;
Minimum aperture f/16;
Minimum focus 2.75 ft.;
28.5° angle of view;
Weight 12.3 oz.; Length 2.3 in.;
Filter size — 58mm; case and lenshood;
Cat. No. **7248**
\$259.50

100

100mm Super-Multi-Coated
Bellows-Takumar f/4.0;
Preset; 5 elements;
Minimum aperture f/22;
Minimum focus 6 in. from lens rim with
Bellows II;
24.5° angle of view;
Weight 5 oz.; Length 1.4 in.;
Filter size — 49mm; case and lenshood;
Cat. No. **7264**
\$184.50

105

105mm Super-Multi-Coated Takumar f/2.8;
Fully automatic; 5 elements;
Minimum aperture f/22;
Minimum focus 4 ft.;
23° angle of view;
Weight 9.9 oz.; Length 2.5 in.;
Filter size — 49mm; case and lenshood;
Cat. No. **7265**
\$184.50

120

120mm Super-Multi-Coated Takumar f/2.8;
Fully automatic; 5 elements;
Minimum aperture f/22;
Minimum focus 5 ft.;
20° angle of view;
Weight 11.9 oz.; Length 2.9 in.;
Filter size — 49mm; case and lenshood;
Cat. No. **7262**
\$194.50

135

135mm Super-Multi-Coated Takumar f/3.5;
Fully automatic; 4 elements;
Minimum aperture f/22;
Minimum focus 4 ft.;
18° angle of view;
Weight 12.4 oz.; Length 3.5 in.;
Filter size — 49mm; case and lenshood;
Cat. No. **7266**
\$179.50

135

135mm Super-Multi-Coated Takumar f/2.5;
Fully automatic; 5 elements;
Minimum aperture f/22;
Minimum focus 5 ft.;
18° angle of view;
Weight 15.8 oz.; Length 3.2 in.;
Filter size — 58mm; case and lenshood;
Cat. No. **7267**
\$219.50

150

150mm Super-Multi-Coated Takumar f/4.0;
Fully automatic; 5 elements;
Minimum aperture f/22;
Minimum focus 6 ft.;
16.5° angle of view;
Weight 11.4 oz.; Length 3.75 in.;
Filter size — 49mm; case and lenshood;
Cat. No. **7268**
\$199.50

200

200mm Super-Multi-Coated Takumar f/4.0;
Fully automatic; 5 elements;
Minimum aperture f/22;
Minimum focus 8 ft.;
12.5° angle of view;
Weight 19.7 oz.; Length 5.4 in.;
Filter size — 58mm; case and lenshood;
Cat. No. **7269**
\$239.50

300

300mm Super-Multi-Coated Takumar f/4.0;
Fully automatic; 5 elements;
Minimum aperture f/22;
Minimum focus 18 ft.;
8° angle of view;
Weight 33.5 oz.; Length 7.25 in.;
Filter size — 77mm;
Case and built-in lenshood;
Cat. No. **7271**
\$429.50

400

400mm Super-Multi-Coated
Tele-Takumar f/5.6;
Click-stop diaphragm; 5 elements;
Minimum aperture f/45;
Minimum focus 27 ft.;
6° angle of view;
Weight 43 oz.; Length 10.8 in.;
Filter size — 77mm;
Case and built-in lenshood;
Cat. No. **7273**
\$449.50

500

500mm Super-Multi-Coated Takumar f/4.5;
Click-stop diaphragm; 4 elements;
Minimum aperture f/45;
Minimum focus 33 ft.;
5° angle of view;
Weight 7 lbs. 2 oz.; Length 15.2 in.;
Filter size — 49mm;
Case and built-in lenshood;
Cat. No. **7274**
\$659.50

1000

1000mm Super-Multi-Coated
Tele-Takumar f/8.0;
Click-stop diaphragm; 5 elements;
Rack and pinion focusing;
Minimum aperture f/45;
Minimum focus 98 ft.;
2.5° angle of view;
Weight 10 lbs.; Length 28.5 in.;
Filter size — 49mm;
Lenshood, tripod and metal case;
Cat. No. **7275**
\$1,495.50

85

85mm Ultra-Achromatic Takumar f/4.5;
Fully automatic; 5 elements;
Minimum aperture f/22;
Minimum focus 2 ft.;
29° angle of view;
Weight 8.7 oz.; Length 2.4 in.;
Filter size — 49mm; case and filters;
Cat. No. **7088**
\$1,400

300

300mm Ultra-Achromatic Takumar f/5.6;
Fully automatic; 5 elements;
Minimum aperture f/22;
Minimum focus 16 ft.;
8° angle of view;
Weight 29 oz.; Length 9 in.;
Filter size — 58mm;
Case and built-in lenshood;
Cat. No. **7089**
\$1,600

EXPOSURE METERS



1°/21° Meter

A highly versatile tool for the advanced amateur or professional, the 1°/21° Meter measures a hair-splitting 1° in the center of a 21° viewing field. It's unsurpassed for selectivity, giving you complete exposure control under any condition, and at any distance. The 1°/21° Meter features eye-level pentaprism viewing; high and low ranges; easy-to-read illuminated scales, and a wide range of shutter speed, aperture, and ASA settings. Complete with batteries and leather case.

Cat. No. **7098** Honeywell Pentax 1°/21° Exposure Meter\$204.50

Cat. No. **7001** "Guide to Good Exposure"\$ 2.00

Cat. No. **7099** Replacement Case for 1°/21° meter \$ 12.00

Clip-on Meters

These small, lightweight exposure meters attach easily to the pentaprism housing of Honeywell Pentax cameras, coupling directly to the shutter speed dial. CdS cell is highly sensitive, and the light acceptance angle is 30°, giving you excellent control over most lighting situations. ASA range is 6 to 1600. Clip-on Meters operate on one 1.3v mercury battery, and come with battery and leather case.

Cat. No. **7135** Clip-on Meter for "SL" cameras ...\$39.50

FILTERS

There are fourteen different Pentax filters to cover a wide variety of applications. Filter sizes range from 46mm to 77mm. All are precision ground, polished and coated for maximum picture quality. For black and white films there are U-V; Ghostless U-V; Y-1 (light yellow); Y-2 (medium yellow); O-2 (medium orange); Y-G (yellow-green) and R-2 (medium red). For color film, filters include: Skylight; Cloudy (81-A); Morning and Evening (82-A); Type A; Polarizing; Flash (80-C) and Flood (80-B). Prices range from \$12.00 to \$35.00.

LENSHOODS

Honeywell Pentax Lenshoods are strongly recommended for use whenever possible to guard against off-angle light which can cause flare in your pictures. Most Takumar lenses from 20mm to 1000mm are supplied with a lenshood. There are 3 different types of lenshoods depending upon lens type: normal, wide angle and tele.

CAMERA CASES

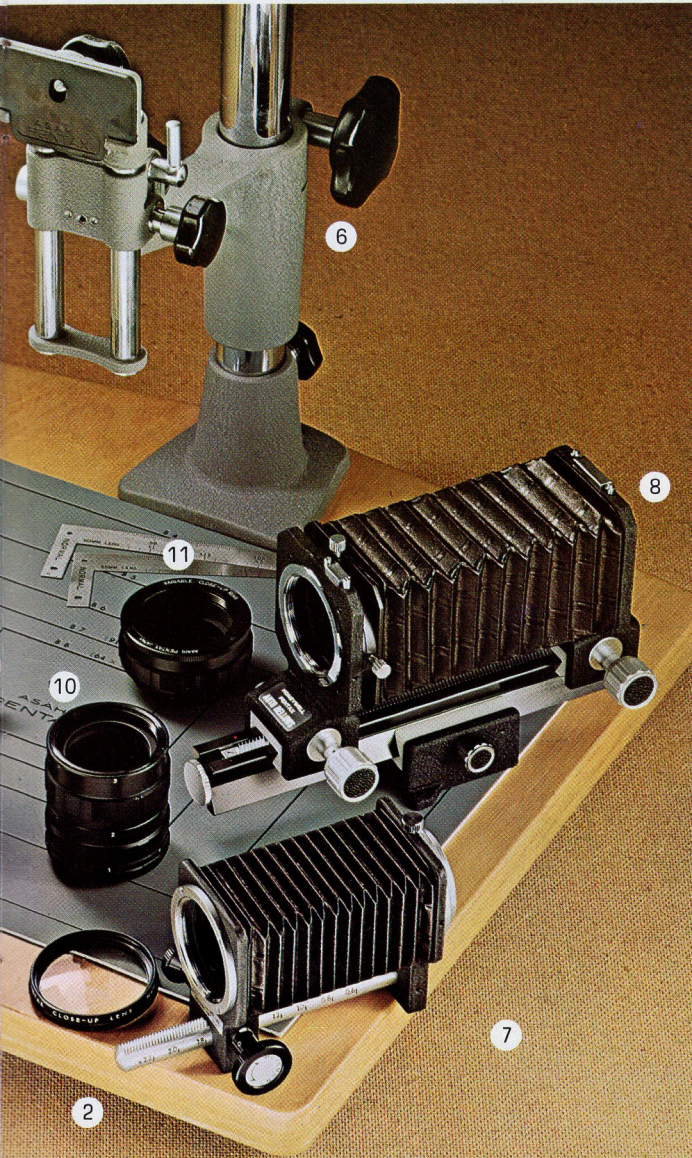
- Cat. No. **7134** Hard leather for all Spotmatic, SL and SP 500 \$26.00
Cat. No. **7122** Soft leather for all Spotmatic, SL and SP 500 \$26.00
Cat. No. **7121** Soft leather for ES \$28.00
Cat. No. **7029** Soft leather for Spotmatic II Motor Drive \$34.00
Cat. No. **751** Soft leather for H1a or H3v camera .. \$19.00
Cat. No. **740** Hard leather for Pentax H1a and H3v cameras \$23.00
Cat. No. **753** Soft leather case for H1a, H3v with Clip-on Meter attached \$20.00
Cat. No. **7093** Top half of above case for converting case no. 751 to accept Pentax with Clip-on Meter attached \$14.00
Cat. No. **7030** Top half cases 753, 751, 7121, 7122 for Takumar Telephoto lenses through 150 mm \$19.00



Close-up accessories for



your Honeywell Pentax



Zero in on the World

Discover the excitement of

Macrophotography and Photomicrography

There are many accessories in the Honeywell Pentax system that can bring you into macrophotography (extreme close-up) and photomicrography (photos taken through a microscope). Macrophotographs are pictures of moderate enlargement — usually .5 to 10 times life size. The camera lens itself is generally used. In shooting photomicrographs — objects magnified to 10 times life size or more — the microscope functions as the camera lens.

1. Macro lens 50mm Super-Multi-Coated Macro Takumar f/4.0; fully automatic; 4 elements; min. aperture f/22; min. focus 9.5"; 46° angle of view; weight 8.7 oz.; lens-hood not required as lens is recessed into mount.

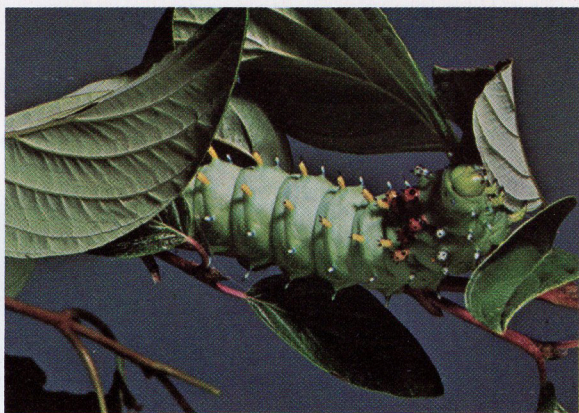
Cat. No. **7258**; filter size — 49mm \$189.50

2. Close-up lens Fits all Super Takumar lenses which accept 49mm filters. Thread mounts to front lens frame for really crisp photomacrography with a magnification of 0.32 to 0.15 at a subject to film plane range of 11" to 18½" with a 55mm lens.

Cat. No. **821** \$14.50



STATES



3. Microscope adapter Fits between the Pentax camera body and the microscope tube, using the microscope optics instead of the camera lens. Use with any 25mm microscope tube. Set includes adapter, main tube and light-sealing tube.

Cat. No. **7091**\$32.00

4. Right angle finder Attaches to the Pentax viewfinder frame for greater ease in low-angle photography, copying and photomicrography.

Cat. No. **788**\$38.00

5. Copipod Portable copy stand for all Pentax cameras. Lens board with adapter rings for 46mm and 49mm lenses, and 4 calibrated telescoping legs. With pouch case.

Cat. No. **717**\$32.00

6. Copy stand Deluxe Copy Stand II quickly and accurately aligns any Pentax for copying documents, specimens, art work.

Cat. No. **7101**\$132.00

7. Pentax Bellows I An extremely flexible accessory for close-up photography. Permits magnification from 0.62X to 2.45X with standard 55mm lens.

Cat. No. **786**\$37.50

8. Pentax auto bellows Front lens board can be reversed to mount lens in reverse position. Double cable release triggers camera shutter and lens automatic diaphragm.

Cat. No. **7095**\$149.00

9. Slide copier Precision slide copier attaches to front of Auto Bellows for quick, accurate slide duplication.

Cat. No. **7090**\$44.00

10. Auto extension tube set Consists of three rings of 9.5mm, 19.0mm and 28.5mm. Used singly or in combination. When three are used simultaneously, with standard 55mm lens, subject is enlarged on film to 1.17 life size.

Cat. No. **7094**\$28.00

11. Focusing extension tube Permits variable extension from 16.8mm to 30.6mm. With standard 55 mm lens, permits magnification from .3X to .71X.

Cat. No. **7105**\$37.50

MISCELLANEOUS ACCESSORIES

- Clip-on Magnifier.** All Pentax Models. Cat. No. **798** \$15.50
- Copipod Adapter Ring.** Use 49mm filters on 46mm lenses. Cat. No. **820**\$2.50
- Reverse Adapter.** Allows standard 50mm or 55mm lenses to be used on Bellows I, Bellows II or extension tubes in reverse position for better macro results. Cat. No. **755**\$4.00
- Cable Release.** Cat. No. **789**\$3.00
- Leica Adapters "A" & "B".** "A" for Leica lenses on Pentax; "B" for Takumar lenses on Leica. Cat. No. **791** (for close-up photography only)\$9.00
- Deluxe Cable Release 12"**, with rotating thread mount and spring-loaded locking collar. Cat. No. **7104** ...\$5.00
- Deluxe Accessory Clip** for shoe-mount accessories. Cat. No. **7092**\$6.50
- Rear Lens Cover.** Protects rear optic when not in use. Cat. No. **781**\$2.50
- Camera Body Cap.** Protects camera body without lens. Cat. No. **794**\$2.50
- Front Lens Cap.** Protects lens when not in use. For lenses using 49mm accessories. Cat. No. **757**\$2.50
- "D" Ring** for attaching camera straps to camera lugs. Cat. No. **7102**\$.15
- Leather Carrying Case** for Pentax camera, lenses and accessories. Cat. No. **7020**\$45.50
- Right Angle Mirror Adapter.** Fits telephoto lenses having 58mm filter diameters. Cat. No. **7096**\$118.00
- Canon Adapter "C"** for 500mm and 1000mm Takumar lenses on Canon. Cat. No. **7110**\$19.50
- Minolta Adapter "M"** for 500mm and 1000mm Takumar lenses on Minolta. Cat. No. **7111**\$19.50
- Konica Adapter "K"** for 500mm and 1000mm Takumar lenses on Konica. Cat. No. **7112**\$19.50
- Shoulder Pad.** Cat. No. **7113**\$1.00
- Rubber Eyecup.** Cat. No. **7117**\$2.00
- Corrective Lenses.** Available from +2.5 to -5 diopter. \$5.95 includes eyepiece.
- Film cassette** for bulk loading 20-36 exposure film. Cat. No. **795**\$7.00
- Replacement lens cases and caps.** See your Honeywell Pentax dealer for prices.
- Honeywell Pentax Books**
- "Pentax and Single Lens Photography"** by Robert Fuhring, 123 pages, illustrated. Cat. No. **749**\$3.95
- "The Pentax Way"** by Herbert Keppler, 352 pages, illustrated. Cat. No. **7000**\$12.95
- "Welcome to the Exciting World of Systems Photography,"** describes the complete Honeywell Pentax System, illustrated. Cat. No. **818**\$.50

Prices subject to change without notice.



Honeywell Pentax

MR. PIX CAMERA STORE
621 Main Street
Oregon City, Oregon 97045

