



PREMO
CAMERAS

PREMO CAMERAS



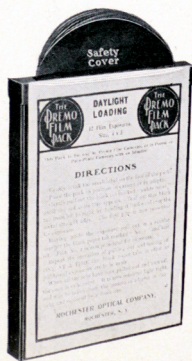
Manufactured by
Rochester Optical Co.
Rochester, New York
U. S. A.

Premo Cameras

FOR many years the word "Premo" has been identified with all that is best in camera construction. To-day it covers a broader field than ever before, as Premo Film Cameras have taken a place of importance in photography. All Premo Cameras are characterized by an excellence which is a by-word among those familiar with things photographic. Constant improvements keep them absolutely up to date. They are made in so many different styles and sizes that the most exacting purchaser can be suited. For film enthusiasts we offer a series of cameras using film exclusively, unequalled in convenience and unsurpassed in results. For those who favor plate cameras we have a most complete line, which in all sizes up to and including 5 x 7 can be converted into daylight loading film cameras by the use of an adapter which fits interchangeably with the plate holder, thus permitting the use of glass plates or film.

Film Pack Photography

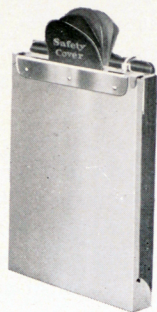
Premo Film Cameras are daylight loading for use with the Premo Film Pack, which consists of twelve flat cut films enclosed in a light proof paper case, the entire pack being smaller in size and of less weight than an ordinary plate holder, and containing material for twelve negatives instead of two. At one side there is an opening the exact size and shape of the film to be exposed. At the top thirteen black paper tabs protrude, one being marked "Safety Cover," which protects the entire pack from light. The others are marked from one to twelve, which represent the different sheets of film to which the paper is attached. The method of making exposures is very simple. The pack is placed in position in the camera, and the tab marked "Safety Cover" drawn out when film No. 1 is presented for exposure. After the exposure has been made, tab No. 1



Premo Film Pack

is drawn, which operation rolls film No. 1 around to the back of the pack, leaving film No. 2 presented for exposure. This exposure being made, tab No. 2 is pulled out, and so on. With the drawing of the last tab, the pack is rendered light tight and can be safely removed in broad daylight. As each tab is drawn it is not left attached, but being of no further use is torn off across the metal edge and thrown away.

The Premo Film Pack can also be used with Premo Plate Cameras up to and including the 5 x 7 size. In this case an adapter is required which takes the place of the plate holder. The pack is placed in the adapter, the adapter inserted the same as a plate holder, the slide removed and tabs drawn as explained above. When using the adapter focusing can be accomplished the same as when using glass plates, as the slide can be replaced, the adapter removed, the picture focused, the adapter inserted, the slide drawn and exposure made.



Adapter

Advantages of the Premo Film Pack

The many advantages over other methods of daylight photography should be carefully considered. The Film Pack method is the only one that permits removing any exposure for development without waiting until the entire pack has been exposed. This is accomplished by taking the camera or adapter to the dark room, removing the pack and breaking the two small red seals at the sides near the bottom, which will allow opening, thus giving access to the exposed film. After removing any exposure desired for immediate development, the pack can be replaced without sealing in the camera or adapter before leaving the dark room and everything is ready for additional exposures. The pack can be re-sealed if desired by moistening the inside of the corner flaps, when they may be stuck firmly to the sides, which allows the pack to be safely removed in daylight after the twelfth exposure has been made.

Another marked advantage is the fact that the film being flat, an even surface is always presented for exposure, while in development one film can be handled at a time.

The advantage of focusing the object at full size on a ground glass when using the Film Pack Adapter should not be overlooked.

The rapidity with which exposures can be made is wonderful, as it would be possible for the operator to make the whole twelve exposures in as many seconds if desired.

The film used in constructing the Premo Film Pack is made by the Eastman Kodak Co. Chemically, they are the same as the N. C. (Non-curling). They are non-halation; they will not curl in development; they are orthochromatic to a marked degree, being very sensitive to yellow, and are, in consequence, very rapid.

The Premo Film Pack, being unbreakable, may be handled by the amateur in development with no fear of breakage, or may be sent through the mail to be developed by a professional with the assurance that they will go safely. The film being in separate sheets can be developed singly, thus obtaining the true value of all exposures whether they be over or under-timed.

Premo Features

Premo Cameras have all improvements known to other cameras, besides many patented features of their own. We call especial attention to the following:

THE PREMO SWING BACK, which works from the center, optically correct, thus allowing successful use of the swing no matter what the subject may be.

THE PREMO TRIPLE EXTENSION BED, made entirely of metal, which overcomes the possibility of trouble on account of atmospheric changes. One pinion works the entire bed, and also serves to lock it rigidly at any point desired.

THE PREMO AUTOMATIC STANDARD CLAMP, which locks the standard firmly to the bed at any point desired.

THE PREMO AUTOMATIC BRIDGE, which provides a runway that connects the track of the front bed to the track of the camera proper when the bed is let down in preparation for an exposure.

THE UNIVERSAL BED STOP, attached to the runway of the camera bed, which allows a stop for the standard when at the point where the lens becomes of universal focus.

THE PREMO REVERSIBLE BACK FASTENER, that permits reversing the back of the camera without the possibility of jarring.

The construction of Premo Cameras is superior in every detail, no pains being spared to secure that perfection in every adjustment which the experienced camerist knows is all important in securing the best results.

New Premos

The enthusiasm with which the Premo Film Cameras have been received and the repeated requests for these cameras fitted with more rapid lenses and shutters of greater scope have led us to offer this year the No. 3 Folding Film Premos. These cameras are of the highest grade in every particular, having the finest finish and being equal to every requirement of the advanced amateur.

We also offer the R. O. C. View Cameras; a new line of moderate priced outfits that will appeal to all view photographers.

The Premo Reflecting Camera is a new instrument, which opens up a field of work never before reached. Photographs of objects moving rapidly can be made as readily as stationary subjects.

Owing to special machinery and the large quantities made, this outfit is furnished at about one-half the cost of cameras offered for similar work, while the improvements and workmanship have no comparison.

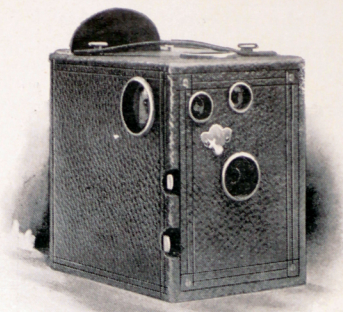
With this camera the operator can see the subject the full size and right side up on the reflecting mirror up to the instant of making the exposure. Our new focal plane shutter, which is incorporated as a part of this outfit, is capable of making exposures in $1/1200$ of a second.

The Premo Reflecting Camera may be supplied with any of the leading anastigmat lenses, and has all the features found in the best of cameras. It is unusually light and compact and is an ideal instrument for those who undertake high speed photography or illustrating work.

Full and complete description of the new models as referred to above will be found in the succeeding pages of this catalogue.



Premo Box Film Camera



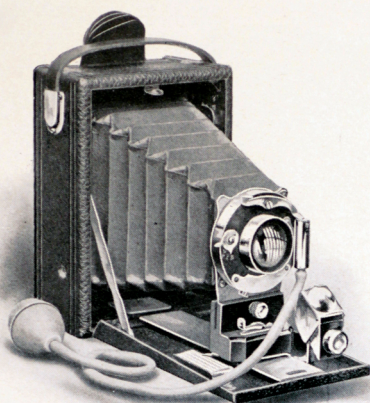
For $3\frac{1}{4} \times 4\frac{1}{4}$ and 4×5 Pictures

	$3\frac{1}{4} \times 4\frac{1}{4}$	4×5
Dimensions	$4 \times 5\frac{1}{2} \times 5\frac{3}{4}$ ins.	$4\frac{3}{4} \times 6\frac{1}{4} \times 6\frac{1}{2}$ ins.
Weight	20 ozs.	25 ozs.
Achromatic Lens, focal length	$5\frac{1}{8}$ ins.	$5\frac{3}{4}$ ins.
Capacity	12 exposures	12 exposures

THE Premo Box Film Camera is designed for the use of the Premo Film Pack, and is simple in every detail and easily operated by the inexperienced. The lens is achromatic, always in focus, and of sufficient length to avoid distortion. The shutter can be set for snap shots or time exposures, works automatically and sets itself for the next exposure. Brilliant finders, both vertical and horizontal, show the object just as it will appear in the picture. Sockets for tripod are also provided. The metal parts are nickel finished. With the advantage of the film pack, the automatic shutter, which is always set, the lens, which is always in focus, and the form of box being non-folding, exposures can be made in rapid succession. The method of loading is extremely simple, as the aluminum back cover hinges, is simply opened and the pack dropped in place, closed, and everything is ready for making pictures.

PRICES:	$3\frac{1}{4} \times 4\frac{1}{4}$	4×5
Premo Box Film Camera	\$5.00	\$6.50
Premo Film Pack, 12 exposures	.70	.90
Carrying Case	1.50	1.75

Premo Folding Film Camera No. 1



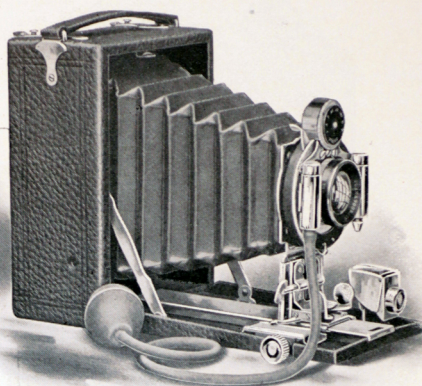
For $3\frac{1}{4} \times 4\frac{1}{4}$, $3\frac{1}{4} \times 5\frac{1}{2}$ and 4×5 Pictures

	$3\frac{1}{4} \times 4\frac{1}{4}$	$3\frac{1}{4} \times 5\frac{1}{2}$	4×5
Dimensions	$2\frac{1}{8} \times 4 \times 5\frac{1}{2}$ ins.	$2\frac{1}{4} \times 4 \times 6\frac{3}{4}$ ins.	$2\frac{1}{4} \times 4\frac{3}{4} \times 6$ ins.
Weight	18 ozs.	20 ozs.	20 ozs.
Double R. R. Lens, focal length	$5\frac{1}{8}$ ins.	$6\frac{1}{4}$ ins.	$6\frac{1}{4}$ ins.
Capacity	12 exposures	12 exposures	12 exposures

THE design of this Premo produces a very compact outfit that will appeal to the tourist, as the dimensions when folded are such that it can be carried in the ordinary coat pocket. The lens is a double rapid rectilinear; the shutter, automatic for making time or instantaneous exposures with bulb or finger release; tripod sockets for making vertical or horizontal pictures are provided. The standard is arranged with sliding movement. The finder is brilliant, mounted entirely with metal. The front bed and back cover are aluminum, which makes compactness, reduces weight and adds attractiveness to the camera. This Premo is wholly a film outfit for use of the Premo Film Pack, is of good construction and reliable in every way.

PRICES:	$3\frac{1}{4} \times 4\frac{1}{4}$	$3\frac{1}{4} \times 5\frac{1}{2}$	4×5
Premo Folding Film Camera	\$10.00	\$12.50	\$12.50
Premo Film Pack, 12 exposures	.70	.80	.90
Black Sole Leather Carrying Case	1.50	1.75	1.75

Premo Folding Film Camera No. 3



For $3\frac{1}{4} \times 4\frac{1}{4}$, $3\frac{1}{4} \times 5\frac{1}{2}$ and 4×5 Pictures

	$3\frac{1}{4} \times 4\frac{1}{4}$	$3\frac{1}{4} \times 5\frac{1}{2}$	4×5
Dimensions	$2\frac{1}{4} \times 4 \times 5\frac{1}{2}$ ins.	$2\frac{3}{8} \times 4 \times 6\frac{3}{4}$ ins.	$2\frac{3}{8} \times 4\frac{3}{4} \times 6$ ins.
Weight	24 ozs.	26 ozs.	26 ozs.
Planatograph Lens, focal length	$5\frac{1}{8}$ ins.	$6\frac{1}{4}$ ins.	$6\frac{1}{4}$ ins.

THE popularity and general satisfaction of the moderate priced film pack cameras, which sold in large quantities last season, has demonstrated that this simple, convenient and reliable method of photography has met with favor wherever introduced, and the many inquiries which have been made for a camera of better construction, fully equipped with all improvements and devices which the advanced amateur desires, has prompted us to offer a high-grade equipment which we believe will meet the requirements of all photographic critics.

The Premo Folding Film Camera No. 3 is a daylight loading camera of the highest type. It will appeal to those who desire the very best instrument that can be procured for daylight film photography. The Planatograph lens, which is a part of the regular equipment, has a working speed of $f: 8$, which insures sufficient exposure when conditions are not the most favorable.

The Bausch & Lomb automatic shutter has a double valve pneumatic release which overcomes all vibration when making

an exposure. This shutter works accurately for exposures from $1/100$ of a second to any length of time desired, is always set and has Iris diaphragm. A rising and falling standard front operated by rack and pinion, which can be used to advantage when making pictures of tall buildings or views where it is desirable to omit unsightly foreground, and a rack and pinion for fine focusing, are distinctive features.

The finder is extra brilliant, fitted with hood and attached to the bed by a device that allows reversing, which permits centering the object accurately either for a vertical or horizontal picture.

Sockets are provided for use with tripod when making exposures indoors or where the light will not permit snapshots.

The sides and ends are constructed of mahogany, the front and back cover of aluminum; all metal parts are nickel finished and the leather covering a beautiful grain cowhide.

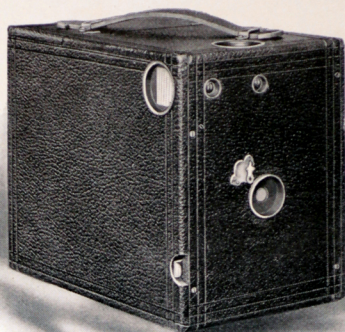
This construction permits fitting any of the leading anastigmat lenses. The standard being entirely of metal is very rigid and serves to give a correct mount for any lens or shutter selected. There is no jarring or vibration, thus giving the advantage of obtaining the full value of the lens.

This camera construction offers to the public a simple method of photography, with a high-grade equipment, that can give nothing but satisfaction to the user. The compactness will also appeal to the tourist, as the entire outfit, including material for making a number of exposures, can be readily carried in the pocket and takes but little space when carried in a travelling bag.

Throughout the workmanship is the best that skill can produce, and we recommend this as the most desirable outfit for those who wish simplicity, quality and convenience in a daylight loading film camera.

PRICES:	$3\frac{1}{4} \times 4\frac{1}{4}$	$3\frac{1}{4} \times 5\frac{1}{2}$	4×5
Premo Folding Film Camera, No. 3, as described above	\$18.00	\$20.00	\$20.00
With B. & L. Plastigmat Lens, $f: 6.8$, Nos. 1 and 2	50.00	58.00	58.00
With B. & L. Zeiss Protar Lens, Series VIIa, Nos. 2 and 3	70.50	77.50	77.50
With Goerz Lens, Series III, $f: 6.8$, Nos. 0 and 1	50.00	58.50	58.50
Extra charge for B. & L. Volute Shutter	14.30	14.30	14.30
Sole Leather Carrying Case	1.50	1.75	1.75
Premo Film Pack, 12 exposures	.70	.80	.90

Cyclone Junior and Senior



For $3\frac{1}{2} \times 3\frac{1}{2}$ and 4×5 Pictures

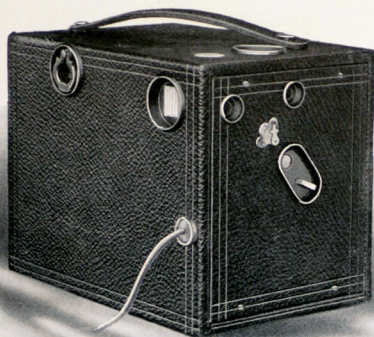
	Junior	Senior
Dimensions	$4\frac{3}{4} \times 5\frac{1}{4} \times 7\frac{1}{4}$ ins.	$5\frac{1}{4} \times 6\frac{3}{4} \times 8$ ins.
Weight	15 ozs.	22 ozs.
Achromatic Lens, focal length	$5\frac{1}{8}$ ins.	$5\frac{3}{4}$ ins.
Capacity	(3 Double Holders) 6 exposures	(3 Double Holders) 6 exposures

THE Cyclone Junior and Senior are constructed for use of glass plates only, and although the most moderate in price of any cameras listed, wonderful results are obtainable. The lenses used in these cameras are universal in focus and cover the plate to the extreme corners, procuring negatives of good detail at a distance of eight feet or more. The shutter is always set and one lever acts for both instantaneous and time exposures. Owing to the simplicity of this design it makes a very desirable outfit for the beginner, who can feel confident of obtaining satisfactory results without any great expense. Finders for centering the object and sockets for tripod allow use as a hand outfit or with a tripod. As furnished the price includes one double plate holder. The compartment at the rear end of the camera allows carrying two extra holders. Complete instructions are furnished with each camera.

PRICES:

Cyclone Junior	\$3.50
Cyclone Senior	4.00
Double Plate Holder (Junior)	.75
Double Plate Holder (Senior)	.80

Magazine Cyclone



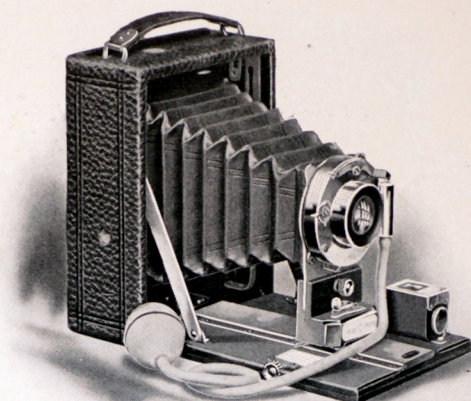
For $3\frac{1}{4} \times 4\frac{1}{4}$ and 4×5 Pictures

	$3\frac{1}{4} \times 4\frac{1}{4}$	4×5
Dimensions	$5 \times 6 \times 7\frac{1}{2}$ ins.	$5\frac{3}{4} \times 6\frac{3}{4} \times 8\frac{1}{4}$ ins.
Weight	37 ozs.	49 ozs.
Achromatic Lens, focal length	$5\frac{1}{8}$ ins.	$5\frac{7}{8}$ ins.
Capacity	12 exposures	12 exposures

THE Magazine Cyclone will be found the ideal outfit for those who prefer using glass plates or cut films, as with this construction twelve exposures can be made without opening the camera. In making an exposure but two simple movements are required—releasing the shutter, either by bulb or button, and turning the key which places a fresh plate in position for the next exposure. The Premo automatic shutter, equipped with bulb and hose, can be used for both time and instantaneous exposures. Brilliant view finders and a lens of the best, always in focus, and sockets for tripod, add to the value. The method of loading is very simple, the plates being placed in aluminum carriers, each one independent of the other, thus permitting the exposed plates to be removed without injury to the others. Prices include twelve carriers.

PRICES:	$3\frac{1}{4} \times 4\frac{1}{4}$	4×5
Magazine Cyclone	\$8.00	\$10.00
Aluminum Carrier	.10	.10
Sole Leather Carrying Case	2.25	2.50

Pocket Premo C



For $3\frac{1}{4} \times 4\frac{1}{4}$ Pictures

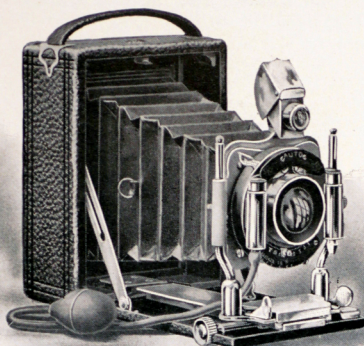
Dimensions	$2 \times 4 \times 5\frac{1}{4}$ ins.
Weight	12 ozs.
Double R. R. Lens, focal length	$5\frac{1}{8}$ ins.

THE Pocket Premo C is an ideal tourists' camera at a nominal cost. While in general appearance and workmanship it cannot compare with the regular Pocket Premo, it has all the adjustments and advantages, including rack and pinion for focusing, sliding front and brilliant reversible finder. The lens is a rapid rectilinear of good quality, and the shutter Gem automatic. The wood parts are of mahogany, handsomely polished, and the fittings nickel finished. The regular Pocket Premo aluminum plate holder fits this camera and the Pocket Premo Film Pack Adapter fits interchangeably, giving the advantage of focusing on the ground glass when using plates or film. Two sockets are provided, thus making a complete outfit for tripod work.

PRICES:

Pocket Premo C	\$12.00
Single Plate Holder	.60
Black Sole Leather Carrying Case	1.50
Premo Film Pack Adapter	1.00
Premo Film Pack, 12 exposures	.70

Pocket Premo



For $3\frac{1}{4} \times 4\frac{1}{4}$ Pictures

Dimensions	$2\frac{1}{8} \times 3\frac{7}{8} \times 5\frac{1}{4}$ ins.
Weight	27 oz.
Planatograph Lens, focal length	$5\frac{1}{8}$ in.

THE Pocket Premo is of the highest type, and can be used as a plate or film camera.

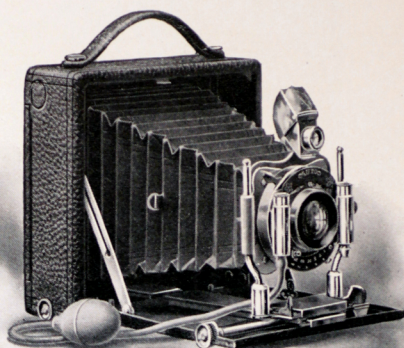
The Planatograph lens is of exceptional value, and works at $f: 8$. The shutter is a B. & L. automatic. Equipped with brilliant reversible finder, automatic standard clamp, universal bed stop, tripod sockets, rising and falling front, and rack and pinion focus, makes a desirable camera for the most difficult work.

As a film camera, there is none better than the Pocket Premo; a Film Pack Adapter fits interchangeably with the plate holder, which allows all the advantages of using film, and also the additional advantage of focusing upon a ground glass for each exposure if desired. As listed, one aluminum plate holder is included.

PRICES:

Pocket Premo, complete as described above	\$20.00
With B. & L. Plastigmat Lens, No. 1, $f: 6.8$	52.00
With B. & L. Zeiss Protar Lens, Series VIIa, No. 2, $f: 7$	72.50
With Goerz Lens, Series III, No. 0, $f: 6.8$	52.00
Extra for B. & L. Volute Shutter	14.30
Single Plate Holder	.60
Black Sole Leather Carrying Case with compartment for 6 holders	2.50
Premo Film Pack Adapter	1.00
Premo Film Pack, 12 exposures	.70

Star Premo



For $3\frac{1}{4} \times 4\frac{1}{4}$ and 4×5 Pictures

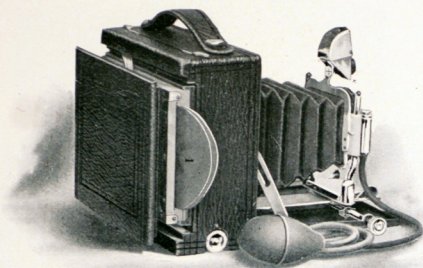
Dimensions	$2\frac{1}{4} \times 5\frac{1}{4} \times 5\frac{1}{4}$ ins.	$3\frac{1}{4} \times 4\frac{1}{4}$ ins.	$2\frac{1}{2} \times 6 \times 6$ ins.
Weight	33 ozs.		37 ozs.
Planatograph Lens, focal length	$5\frac{1}{8}$ ins.		$6\frac{1}{4}$ ins.

THE variety of work readily performed with the Star Premo is almost unlimited, as it possesses features that hitherto have been found only in bulky professional outfits. Be the work of professional or amateur nature, the correct exposure can be made under the existing circumstances.

As a camera for architectural work there is no equal, as it has rising and falling front and swing back that work from the center. The advanced photographer appreciates these adjustments, as with their use distortion can be avoided.

All other improvements known to high-grade cameras are furnished, including brilliant finder with hood, rack and pinion for fine focusing, and reversible back. This form of back is very desirable, as upright or oblong pictures can be made without changing the position of the camera proper. The lens is our celebrated Planatograph working at $f:8$; the shutter, an improved Bausch & Lomb automatic with Iris diaphragm.

This outfit as furnished includes a sole leather carrying case to match the camera, also one double plate holder. The case is velvet lined and has a compartment for carrying four holders.



As a Film Camera

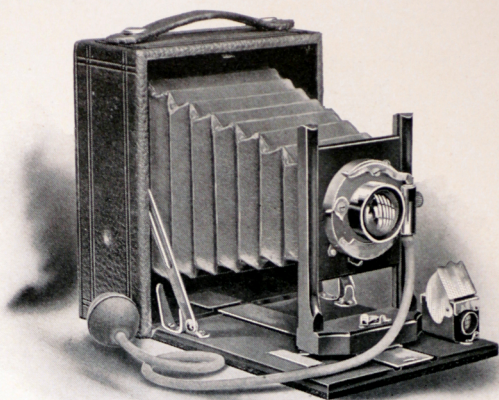
As a film camera for use of the Premo Film Pack no outfit will be found more desirable, as with the pack adapter, which fits interchangeably with the regular plate holder, every movement and advantage in using glass plates can be had, and the additional advantage of carrying twelve exposures in the same space as two plates.

Each and every part of the Star Premo is positive and simple. The rack and pinion focusing attachment, swing back, rising and falling front and the automatic bed clamp, are all locking, which overcomes the possibility of errors in exposure on account of any part moving after it has been once placed in position. The front bed and focusing panel are of aluminum.

The covering is of the best quality leather of beautiful design, and throughout the Star Premo is a model of beauty, strength and accuracy.

PRICES:	3¼ x 4¼	4 x 5
Star Premo, complete as described above	\$25.00	\$25.00
With B. & L. Plastigmat Lens, Nos. 1 and 2, <i>f</i> : 6.8	57.00	63.00
With B. & L. Zeiss Protar, Series VIIa, Nos. 2 and 3	77.50	82.50
With Goerz Lens, Series III, Nos. 0 and 1, <i>f</i> : 6.8	57.00	63.50
Extra for B. & L. Volute Shutter	14.30	14.30
Double Plate Holder	1.00	1.00
Premo Film Pack Adapter	1.00	1.50
Premo Film Pack, 12 exposures	.70	.90

Pony Premo No. 1



For 4 x 5 Pictures

Dimensions

2 1/2 x 5 1/4 x 6 1/4 ins.

Weight

24 ozs.

Double R. R. Lens, focal length

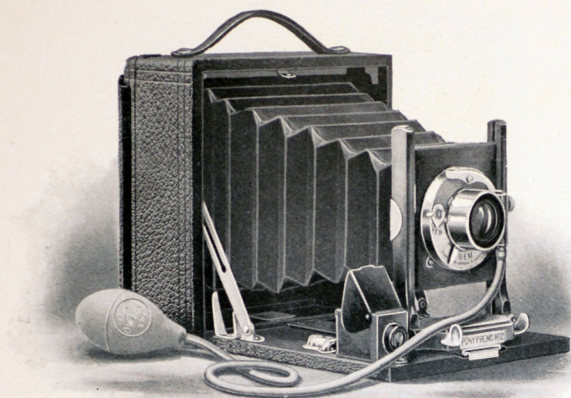
6 1/4 ins.

OWING to the simplicity of everything pertaining to this camera it will be found very essential for the beginner. Although complicated in no way, equipment is furnished for making exposures to advantage under ordinary circumstances. The lens is a rapid rectilinear of good quality, the shutter Gem automatic, which is always set and works with bulb or lever. The finder is brilliant and fitted with hood. Tripod sockets are also provided. All metal parts are nickel finished; the wood mahogany, handsomely polished, the covering morocco grain leather. The front has rising and falling adjustment and the bed is very rigid, having two braces which lock automatically. As furnished one double plate holder and carrying case are included. The case has a separate compartment for four holders and is covered with imitation leather.

PRICES:

Pony Premo No. 1	\$12.00
Double Plate Holder	1.00
Premo Film Pack Adapter	1.50
Premo Film Pack, 12 exposures	.90

Pony Premo No. 2



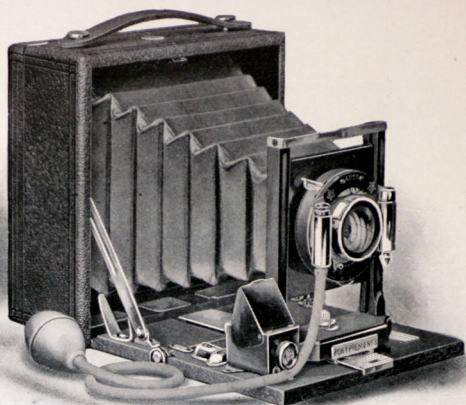
For $3\frac{1}{4} \times 4\frac{1}{4}$, 4×5 , and 5×7 Pictures

	$3\frac{1}{4} \times 4\frac{1}{4}$	4×5	5×7
Dimensions	$2\frac{1}{2} \times 5\frac{1}{4} \times 5\frac{1}{4}$ ins.	$2\frac{1}{2} \times 6 \times 6$ ins.	$3\frac{1}{4} \times 8\frac{1}{4} \times 8\frac{1}{4}$ ins.
Weight	24 ozs.	28 ozs.	50 ozs.
Double R. R. Lens, focal length	$5\frac{1}{4}$ ins.	$6\frac{1}{4}$ ins.	$8\frac{1}{4}$ ins.

THE Pony Premo No. 2 corresponds to the model No. 1, the lens and shutter being of the same quality. In addition it has the advantage of a reversible back which can be reversed in an instant and allows making pictures either of a horizontal or vertical form, without changing the position of the camera proper. This Premo is equipped with a spirit level attached to the front bed, which will be found of value in adjusting the position of the camera when preparing for an exposure. As furnished, carrying case and one double plate holder are included. The Premo Film Pack Adapter fits in place of plate holder, thus converting this outfit into a daylight loading film camera when desired.

PRICES:	$3\frac{1}{4} \times 4\frac{1}{4}$	4×5	5×7
Pony Premo No. 2	\$14.00	\$14.00	\$18.50
Double Plate Holder	1.00	1.00	1.25
Premo Film Pack Adapter	1.00	1.50	2.50
Premo Film Pack, 12 exposures	.70	.90	1.60

Pony Premo No. 3



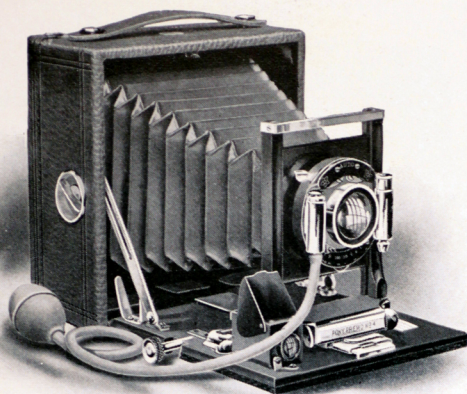
For 4x5 and 5x7 Pictures

	4 x 5	5 x 7
Dimensions	2 1/2 x 6 x 6 ins.	3 1/4 x 8 1/4 x 8 1/4 ins.
Weight	33 ozs.	56 ozs.
Double R. R. lens, focal length	6 1/4 ins.	8 1/4 ins.

THIS Premo corresponds closely to the model No. 2, described on the preceding page, except that it is designed for a wider range of work with regular equipment. The Rapid Rectilinear lens is of exceptional quality and will be found satisfactory in every particular. The shutter is the latest improved B. & L. automatic, which has Iris diaphragm and will expose from 1/100 to 1 second with great accuracy. A rack and pinion is supplied for adjusting the focus, which insures accurate focusing. The carrying case, which is a part of this outfit, is made of the best sole leather and has separate compartment for carrying four holders. The Premo Film Pack can be used to good advantage with this camera as the adapter fits interchangeably with the plate holder, thus making a daylight loading film and plate camera combined.

PRICES:	4 x 5	5 x 7
Pony Premo No. 3	\$20.00	\$26.00
Double Plate Holder	1.00	1.25
Premo Film Pack Adapter	1.50	2.50
Premo Film Pack, 12 exposures	.90	1.60

Pony Premo No. 4



For 4 x 5 and 5 x 7 Pictures

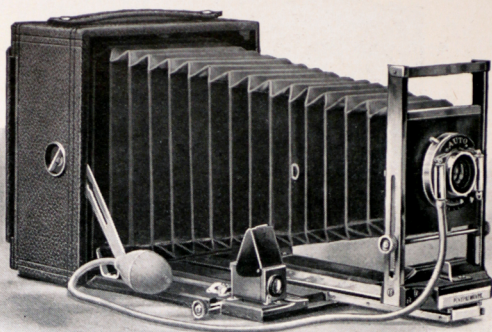
	4 x 5	5 x 7
Dimensions	2 ³ / ₄ x 6 x 6 ins.	3 ¹ / ₄ x 8 ¹ / ₄ x 8 ¹ / ₄ ins.
Weight	36 ozs.	60 ozs.
Planatograph Lens	6 ⁵ / ₈ ins.	8 ⁵ / ₈ ins.

*B*ESIDES possessing all the points of advantage of the series Nos. 1, 2 and 3, already described, this Premo is equipped with Planatograph lens, swing back and automatic bed clamp. The lens is of long focus, very rapid, and works at $f: 8$. The feature of the swing back is very desirable as it allows the back to be easily adjusted at any angle, and with both swing back and rising and falling front the most difficult objects can be photographed to the best advantage. This Premo can be used as a plate or film outfit. As listed, a black sole leather carrying case with separate compartment for four holders, also one double plate holder, are included. A wide angle lens can be furnished, which is interchangeable with the regular lens, and will be found of great value for interior work.

PRICES:

	4 x 5	5 x 7
Pony Premo No. 4, complete as described above	\$24.00	\$ 32.00
With B. & L. Plastigmat Lens, Nos. 2 and 3, $f: 6.8$	62.00	77.00
With B. & L. Zeiss Protar Lens, Series VIIa, Nos. 3 and 8	81.50	104.00
With Goerz Lens, Series III, Nos. 1 and 2, $f: 6.8$	62.50	76.00
Wide Angle Lens, extra	7.00	8.00
Extra for B. & L. Volute Shutter	14.30	14.30
Double Plate Holder	1.00	1.25
Premo Film Pack Adapter	1.50	2.50
Premo Film Pack, 12 exposures	.90	1.60

Pony Premo No. 6



For 4 x 5, 5 x 7 and 6½ x 8½ Pictures

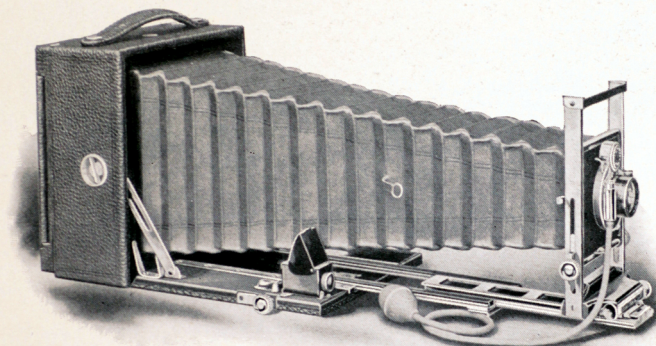
	4 x 5	5 x 7	6½ x 8½
Dimensions	3½ x 6 x 6 ins.	4 x 8¼ x 8¼ ins.	5 x 10 x 10 ins.
Weight	3¼ pounds	5¼ pounds	8½ pounds
Planatograph Lens, focal length	6⅝ ins.	8⅝ ins.	10 ins.

THE Pony Premo No. 6 is designed for a greater variety of work than the preceding members of the Premo series. In order to include this vast number of finer adjustments, it of course becomes necessary to add a trifle in bulk and weight, although in no way is this Premo cumbersome. For copying or any special work, where great length of bellows is required, this camera is especially suited. The shutter furnished with the regular equipment is a Bausch & Lomb automatic with a variation of speed from 1/100 to 1 second, also arranged for bulb or time exposure of any length desired. The lens being of exceptionally good quality, the back or front combination can be used separately and will be found perfectly satisfactory for telephoto work.

This camera is equipped with a number of our special patented adjustments, known only to Premos. The reversible back is attached by a special clamp that holds it rigid, and can be released in an instant. The standard allows the lens board to be removed and replaced apparently without the use of any fastener, everything being automatic. The rack and pinion

for raising or lowering the lens also has a clever locking device which prevents any movement after adjustment has been made.

The bed clamp works automatically and clamps the standard firmly at any point desired. A universal bed stop attached to the bed is also a prominent feature. The bed itself is triple extension, one pinion being used to rack out both beds, the extension locking itself to the bottom bed automatically as the pinion is turned forward, and unlocking in the same manner when racked back to position. The swing back is adjusted at centers and operates from the outside. The finder is the most brilliant obtainable, and a double spirit

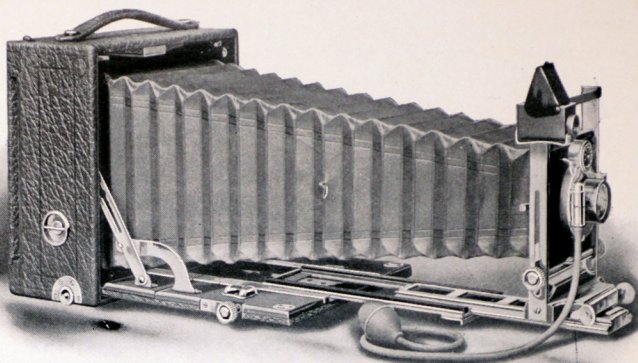


Showing Full Length of Extension

level and two sockets for tripod are provided. As furnished a black sole leather carrying case, plush lined, with two compartments, one for camera, the other for four holders, also one double holder, are included. The Premo Film Pack Adapter in the 4 x 5 and 5 x 7 sizes fits interchangeably with the plate holder, thus producing a daylight loading film Premo without sacrificing any of the advantages of the plate camera.

PRICES:	4 x 5	5 x 7	6½ x 8½
Pony Premo No. 6, complete as described above	\$37.00	\$ 47.00	\$ 62.00
With B. & L. Plastigmat Lens, Nos. 2, 3 and 5, <i>f</i> : 6.8	75.00	92.00	129.00
With B. & L. Zeiss Protar, Series VIIa, Nos. 3, 8 and 12	94.00	119.00	169.50
With Goerz Lens, Series III, Nos. 1, 2 and 4, <i>f</i> : 6.8	75.50	91.00	122.50
Wide Angle Lens, extra	7.00	8.00	12.00
Extra for B. & L. Volute Shutter	14.30	14.30	16.30
Double Plate Holder	1.00	1.25	1.75
Premo Film Pack Adapter	1.50	2.50	
Premo Film Pack, 12 exposures	.90	1.60	

Pony Premo No. 7



For 4 x 5, 5 x 7 and 6½ x 8½ Pictures

	4 x 5	5 x 7	6½ x 8½
Dimensions	3 ½ x 6 ¼ x 6 ¼ ins.	4 x 8 ½ x 8 ½ ins.	5 x 9 ¾ x 9 ¾ ins.
Weight	3 ½ pounds	5 ½ pounds	8 ½ pounds
Planatograph Lens	6 ⅝ ins.	8 ⅝ ins.	10 ins.

THE special features embodied in this Premo command particular attention, as it is a camera of unequaled photographic possibilities. While fully equipped with the many improvements as shown on the No. 6, there are many additional advantages that will be found of great assistance in making exposures under the most trying circumstances.

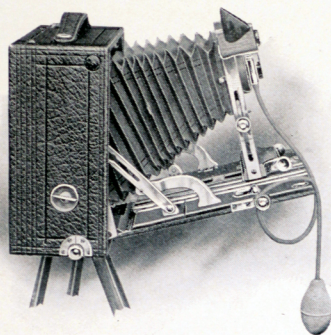
Attention is called to the triple extension bed, made entirely of metal, equipped with automatic locking device, also universal stop.

This bed is entirely independent of the wooden base beneath, being supported by angle pieces, and is not affected by atmospheric conditions.

The principle of dropping the bed permits the use of any extreme wide angle lens without difficulty. An automatic bridge connecting the bed to the camera proper, when the front is dropped in position, makes a perfect runway for the standard.

The swing back, which adjusts from the center, is optically perfect and works with rack and pinion which locks at any angle desired.

Not only in the general design, but in the wonderful ingenuity with which all details of equipment are made to harmonize and in the accurate working of each and every movement, the Pony Premo No. 7 excels.



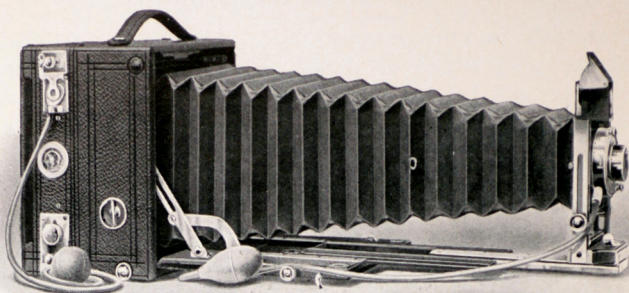
Showing center swing and rising and falling front

The carrying case, which is included, is of the best leather, of the same grain and finish of the camera, is velvet lined and has compartment for four holders.

The advantage, which applies to all Premos, of using the Premo Film Pack Adapter in the 4 x 5 and 5 x 7 sizes, in place of the plate holder, should not be overlooked.

PRICES:	4 x 5	5 x 7	6½ x 8½
Pony Premo No. 7, complete as described above	\$ 50.00	\$ 60.00	\$ 75.00
With B. & L. Plastigmat Lens, Nos. 2, 3 and 5, <i>f</i> : 6.8	88.00	105.00	142.00
With B. & L. Zeiss Protar, Series VIIa, Nos. 3, 8 and 12	107.50	132.00	182.50
With Goerz Lens, Series III, Nos. 1, 2 and 4, <i>f</i> : 6.8	88.50	104.00	135.50
Wide Angle Lens, extra	7.00	8.00	12.00
Extra for B. & L. Volute Shutter	14.30	14.30	16.30
Double Plate Holder	1.00	1.25	1.75
Premo Film Pack Adapter	1.50	2.50	
Premo Film Pack, 12 exposures	.90	1.60	

Premo Supreme



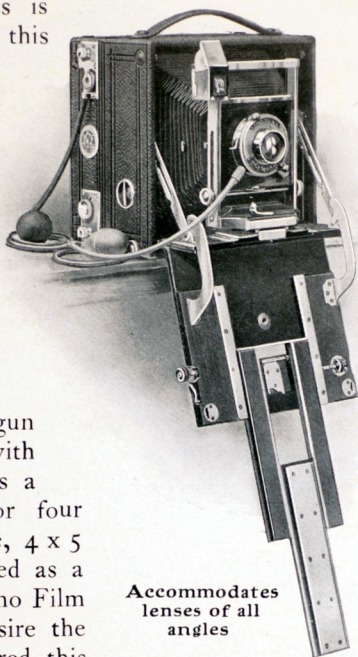
For 4 x 5, 5 x 7, and 6½ x 8½ Pictures

	4 x 5	5 x 7	6½ x 8½
Dimensions	3½ x 6¼ x 6¼ ins.	4 x 8½ x 8½ ins.	5 x 9¾ x 9¾ ins.
Weight	3½ lbs.	5½ lbs.	8½ lbs.
Planatograph Lens	6⅝ ins.	8⅝ ins.	10 ins.

*A*S the name implies, this Premo holds the highest place and is without question the most advanced type of camera ever offered to the public. It is designed for the most difficult branches of photography, and equipped with every movement and adjustment known to cameras. The material used in the process of manufacture is the best the world affords; seal leather bellows and covering, mahogany of the most beautiful grain that grows, metal of the highest grade and finish—all are combined in its make-up. In workmanship no camera equals, as the entire work is performed by men who have had years of experience in camera construction and are expert in this line. The features of the Premo Supreme are almost numberless. Among the most noticeable might be mentioned the superior construction of its bed, which accommodates lenses of all angles with equal facility; the automatic bridge which connects the bed to the camera proper, making a runway that permits the standard to slide smoothly the entire length of draw; the metal extension to bed, of perfect construction, with three sections which work with but one pinion and lock automatically by patented mechanism which insures rigidity; the standard, with rack and pinion rise and fall, self locking; the automatic bed clamp; the swing back, working from centers adjusted with

rack and pinion. In fact, everything that tends to increase the accuracy and add to the appearance and usefulness is incorporated as a part of this Premo.

The Premo Focal Plane Shutter is a part of this outfit, which for high speed advantages has no equal. The Planatograph Lens and B. & L. Iconoscope finder are a part of the regular equipment. The carrying case, of the best leather obtainable, has gun metal fittings, is supplied with lock, velvet lined, and has a separate compartment for four holders. Premo Supreme, 4 x 5 or 5 x 7 size, can be used as a film camera with the Premo Film Pack. To those who desire the best that can be procured this Premo will without question meet all requirements.



Accommodates
lenses of all
angles

PRICES:

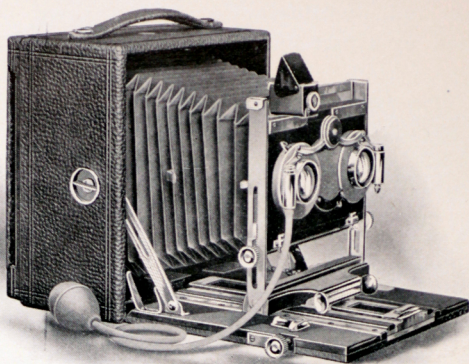
4 x 5

5 x 7

6½ x 8½

Premo Supreme, complete as described above	\$ 85.00	\$105.00	\$135.00
With B. & L. <u>Plastigmat</u> Lens, Nos. 2, 3 and 5, <i>f</i> :6.8	123.00	150.00	202.00
With B. & L. <u>Zeiss Protar</u> Lens, Series VIIa, Nos. 3, 8 and 12	142.50	177.00	242.50
With <u>Goerz</u> Lens, Series III, Nos. 1, 2 and 4, <i>f</i> :6.8	117.00	149.00	195.00
Wide Angle Lens extra	7.00	8.00	12.00
<u>Extra</u> for B. & L. <u>Volute Shutter</u>	14.30	14.30	16.30
Premo Double Plate Holder, mahogany	1.50	2.00	2.50
Premo Film Pack Adapter	1.50	2.50	
Premo Film Pack, 12 exposures	.90	1.60	

Stereo Premo



For Stereo Pictures

STEREOGRAPHY is a branch of photography by which realistic observation is obtained by the use of a matched pair of lenses making two pictures of the same object and at the same time. Pictures made in this way, when transposed and viewed through a stereoscope, give the same visual effects as when looking at the original subject.

The construction of Premo cameras in the 5 x 7 size permits the fitting of matched lenses, and we offer various equipments as listed below.

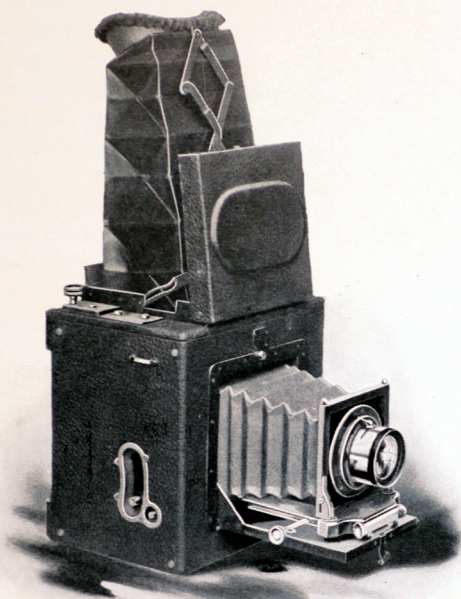
In making a selection of an outfit for this work we recommend good lenses, as this work is of a very artistic nature and wonderful results are obtained with the correct equipment.

The new automatic stereo shutter, which we furnish, is of construction which allows the fitting of all high grade lenses. The lens board and bellows partition are removable, which allows making 5 x 7 pictures with a lens attached to a duplicate lens board.

PRICES:

No. 4 Pony Premo, Planatograph Lenses $f: 8$	\$50.00
No. 6 Pony Premo, Planatograph Lenses $f: 8$	65.00
No. 7 Pony Premo, Planatograph Lenses $f: 8$	78.00
With Anastigmat Lenses, quotations when requested.	

Premo Reflecting Camera



For 4 x 5 Pictures

Dimensions
Weight
Focal capacity

$5\frac{5}{8} \times 7\frac{3}{4} \times 8\frac{1}{4}$ ins.
 $5\frac{1}{2}$ pounds
10 ins.

WE offer the Premo Reflecting Camera for making exposures where great rapidity is required. It will be found of great value for newspaper work or for photographing any moving object where it is essential for successful results that the object be centered and the exposure made at the same time. This rapidity is accomplished by the use of a reflecting focusing mirror, which shows the object just as it will appear in the picture, of the exact size, and allows focusing and centering the object at the same time. The pressure of a button throws the focusing mirror from the

path of the lens, and at the same time releases the shutter and makes the exposure.

Our new Focal Plane Shutter, which is incorporated as a part of this camera, attains a speed of $1/1200$ of a second, and can be set for less speed as the exposures may require. The opening of the shutter curtain can be regulated to any width for the different exposures. This shutter can also be set for time exposures, and when so set focusing can be accomplished by use of the ground glass which is fitted to the back of the camera. This shutter is very accurate, and at the same time its simplicity is wonderful. All adjustments are made from the outside, and the width of curtain opening and shutter speed is plainly shown by the indicator.

The focusing hood is of sufficient length to allow holding the camera conveniently when making an exposure, and the eye shield fits the face closely, thus excluding outside light and permits seeing the object plainly on the focusing screen.

The reversible back can be readily changed, which allows making upright or horizontal pictures.

The method of preparing for an exposure is such that

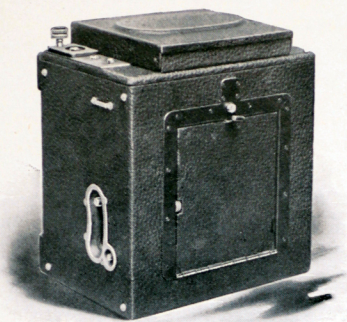


Made with Goerz Lens, I-b, Type B. Aperture $f: 6$.
Speed, $1/600$ second.

everything is in readiness almost instantly. Simply press the button and the standard drops in place.

The lens is focused accurately by rack and pinion movement. A rise and fall front is also provided, which can be used to advantage under various conditions. Sockets for tripod are also furnished.

A special feature of the Premo Reflecting Camera is its compactness, being only a trifle over half the size of other cameras offered for rapid photography.



This is due to our patented method of folding, which allows the lens to close below the reflecting mirror, thus making use of all space within the camera box. The focusing hood also folds snugly within the camera proper, thus making a neat box when closed without any of the different parts protruding.

The focusing screen and reflecting mirror are so arranged that the compression of air between the two prevents all possibility of jarring the camera at the instant of exposure.

The front bed of this camera is of mahogany, with the best finish obtainable. The metal parts are of nickel finish, and the covering of genuine morocco leather.

Owing to the rapidity of exposures it is necessary to use an anastigmat lens in order to make proper use of the advantages of this camera. Any of the leading anastigmats can be readily fitted, as the range of focus is six to ten inches.

As furnished, one double plate holder is included. The Premo Film Pack Adapter fits interchangeably with the plate holder, and makes a very valuable addition to this outfit, giving the advantage of daylight loading, as well as a method for rapid changing of material for different exposures. This adapter accommodates the regular Premo Film Pack of twelve exposures.

In constructing this camera complicated mechanism has been avoided, and considering the work that can be readily done with this outfit, its simplicity is wonderful. The work-

manship throughout is the best that skill can produce, and we offer it to the public as a strictly high grade camera.

While the cost of manufacture necessarily makes the selling price somewhat in advance of the ordinary camera, the many advantages over others must appeal to the prospective purchaser.

The most interesting subjects from a photographic standpoint are objects in rapid motion, and while with the regular camera good photographs of such subjects are beyond reach, with the Premo Reflecting Camera they are as easy to procure as though everything was stationary.

Not only does the wonderful speed of the shutter and lens used accomplish these results, but with the focusing mirror, the exposure can be made the instant that the rapidly moving objects reach the point where it is decided by the operator, they constitute the most interesting picture.

While the main superiority over other cameras is due to its capabilities in rapid photography, this camera can be used to equal advantage in making pictures of still life subjects.

We list below a few of the most desirable lenses which we carry in stock, and will fit without extra charge to the above described camera.

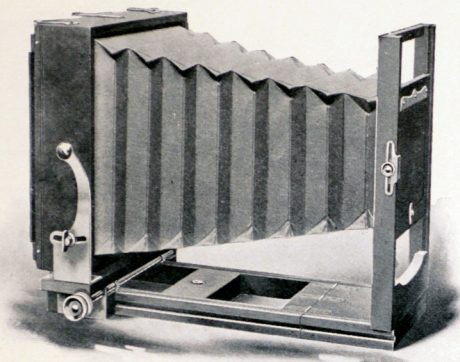
As we are in a position to furnish all leading lenses at the same rate as if purchased from the manufacturers, it will be found to the advantage of all purchasers to order the complete outfit fully equipped and adjusted ready for work, as in this way our guarantee is procured.

When lenses are fitted to this camera by others than ourselves, we cannot be responsible for the results.*

PRICES:

The Premo Reflecting Camera (without lens)	\$ 85.00
With B. & L. Zeiss Unar, Series I-b, <i>f</i> : 4.5, No. 5	127.00
With B. & L. Zeiss Tessar, Series II-b, <i>f</i> : 6.3, No. 5	125.00
With B. & L. Zeiss Convertible Protar, Series VIIa, <i>f</i> : 6.3, No. 7	153.00
With B. & L. Plastigmat, <i>f</i> : 6.8, No. 2	125.00
With Goerz Type B, Series I-b, <i>f</i> : 4.8, No. 1	127.50
With Goerz Series III, <i>f</i> : 6.8, No. 1	125.50
Sole Leather Carrying Case, with extra compartment for six plate holders	6.00
Extra Plate Holders	1.00
Premo Film Pack Adapter	1.50
Premo Film Pack	.90

R. O. C. View

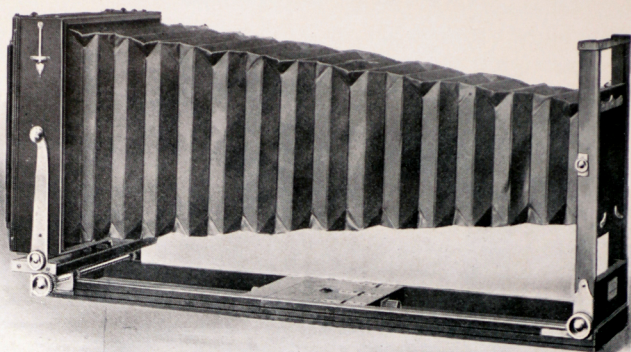


THIS outfit is designed for use with tripod only, and will appeal to those who desire a good rigid camera at a moderate price with all adjustments. It has a back focus which works by rack and pinion, with a set clamp connected that locks at any point desired. This camera is equipped with rising and falling front, double swing back which works from the center, and reversible back which can be changed readily without jarring the camera. The wood parts are mahogany finish, and all metal parts lacquer finished brass. The carrying case is covered with heavy canvas, has a handle, and is very serviceable.

For interior photography the R. O. C. View Camera is particularly desirable, as the method of back focusing allows the use of extreme wide angle lenses, with no possibility of trouble on account of the bed. The standard being stationary makes a very rigid outfit. This outfit complete as listed includes camera, plate holder and carrying case.

Size of View	Focal Capacity	Weight of Camera	Prices
5 x 7	14 in.	4 lbs.	\$15.00
6½ x 8½	15½ in.	4¾ lbs.	16.00
8 x 10	17 in.	5¾ lbs.	17.00

Empire State

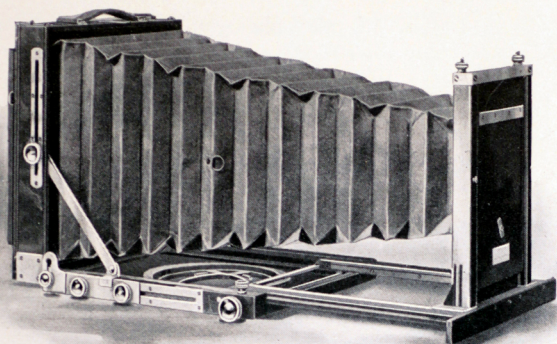


*T*HIS camera is of the type known as a tripod outfit and is not designed for hand use, but is adapted for a wide range of scientific work. In construction it is of the very best, the wood parts of mahogany highly polished, the metal parts of brass lacquered. The bed hinges, folding completely under the camera, thus allowing lenses of extremely short focus to be used. The front is extended by a rack and pinion which locks firmly at any point desired. Up to the 14 x 17 size the focus is adjusted by moving the front or back as preferred, both operating by rack and pinion. The 14 x 17 size is made with back focus only, and has a convenient focusing handle. The Empire State is also equipped with rising and falling front which works with rack and pinion, a double swing which works from the center, also a reversible back. As furnished a substantial leather bound canvas carrying case and one holder are included. The carrying case has capacity for camera and three holders. With sizes above 11 x 14 English book holders are supplied.

Size of View	Focal Capacity	Weight of Camera	Prices
5 x 7	22 in.	5 lbs.	\$21.00
6½ x 8½	27 in.	5¾ lbs.	22.00
8 x 10	30 in.	7¾ lbs.	25.00
11 x 14	37 in.	11½ lbs.	36.00
14 x 17	48 in.	23¾ lbs.	60.00

NOTE—Larger sizes than listed are furnished to order. Prices on application.

Carlton & Universal



*A*S high grade tripod cameras the Carlton and Universal have achieved lasting popularity on account of their many and exceptional characteristics. The finish throughout is superb and the design and construction accomplishes beauty, compactness and simplicity. The Carlton has a revolving tripod top incorporated as a part of the camera, adapted for use with the combination tripod. The Universal does not, and in this point their chief difference lies. The length of bellows draw, together with the various adjustments, permits the use of all lenses no matter what the angle may be. They have reversible backs, swing backs, rising and falling front, as well as all other desirable adjustments.

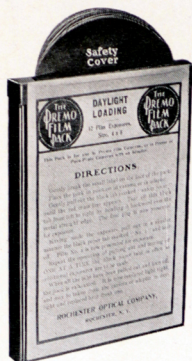
The complete outfit includes one Universal plate holder and a combination tripod, all enclosed in a canvas carrying case. The case has space for camera, tripod and six holders.

Size of View	Focal Capacity	Prices	
		Carlton	Universal
5 x 7	17 in.	\$40.00	\$34.00
6½ x 8½	20¼ in.	46.00	38.00
8 x 10	24 in.	52.00	43.00
11 x 14	30¾ in.	62.00	52.00

Accessories

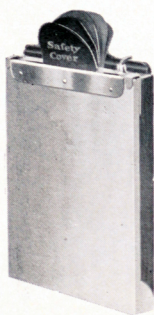
Premo Film Pack

The Premo Film Pack offers photographers a means of using film in the most convenient way and makes the ordinary plate camera a daylight loading film camera with the advantage of focusing on the ground glass the same as when using plates. This pack consists of twelve flat cut films packed together in a light proof paper case. Attached to each film is a paper tab, the end of which is numbered, thus showing the operator just which film is in position for exposure. The method of using this pack is extremely simple, as the only movement necessary in placing the film in position for the next exposure is to simply pull out a tab. The emulsion is extremely rapid; they will not curl in development, they are non-halation and orthochromatic to a marked degree. Full description and further information will be found on pages 2, 3 and 4.

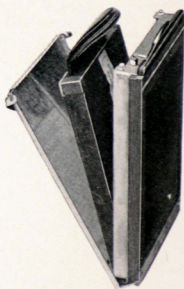


Prices :	3 1/4 x 4 1/4	Premo Film Pack, 12 exposures	\$.70
	3 1/4 x 5 1/2	Premo Film Pack, 12 exposures	.80
	4 x 5	Premo Film Pack, 12 exposures	.90
	5 x 7	Premo Film Pack, 12 exposures	1.60

Premo Film Pack Adapter



This adapter is similar in form to an ordinary plate holder. It is constructed for use with plate cameras, thereby converting them into daylight loading film cameras. This adapter can be removed and replaced the same as a plate holder, thus giving the advantage of focusing on the ground glass when using film. The back is of aluminum and the slide of hard rubber.



Prices :	3 1/4 x 4 1/4	\$1.00	4 x 5	\$1.50	5 x 7	\$2.50
----------	---------------	--------	-------	--------	-------	--------

Cartridge Roll Holder

For use of cartridge rollable film and are furnished for 4 x 5 and 5 x 7 Premos. They load in daylight, are covered with seal grain leather, and have nickel fittings.

Prices :	4 x 5	\$5.00	5 x 7	\$6.50
----------	-------	--------	-------	--------

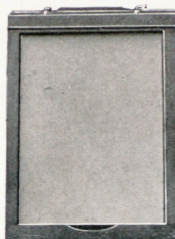
Premo Plate Holder

These holders are made for Premo Cameras only and have become the most popular of any in the world.

This is due to their simplicity in design and their excellence in manufacture.

Our patented spring bar device allows loading or unloading readily without danger of the plate breaking, or moving after once placed in position.

Premo holders are fitted with rubber slides and guaranteed absolutely light tight. The word "Premo" is embossed on the septum, and no holder is a Premo holder unless so marked.



Prices:	$3\frac{1}{4} \times 4\frac{1}{4}$	\$1.00	$6\frac{1}{2} \times 8\frac{1}{2}$	\$1.75
	4×5	1.00	8×10	2.00
	5×7	1.25		

Universal Plate Holder

This holder is for Empire State, Carlton and Universal cameras, and in construction resembles closely the Premo.

The slides are press-board.

Prices:	5×7	\$1.25	8×10	\$2.00
	$6\frac{1}{2} \times 8\frac{1}{2}$	1.75	11×14	4.00

Rochester Plate Holder

This holder is of good construction and adapted for use with Pony Premo and R. O. C. View Cameras.

They are made of cherry and have press-board slides.

Prices:	5×7	\$1.00	$6\frac{1}{2} \times 8\frac{1}{2}$	\$1.50	8×10	\$1.75
---------	--------------	--------	------------------------------------	--------	---------------	--------

English Book Holder

The sides of this holder are hinged and allow opening like a book. This form of holder is very desirable for large plates.

Size	Prices	
	Press-board Slides	Rubber Slides
11×14	\$5.00	\$6.00
14×17	6.50	7.50

Holder Slides

Size	Prices	
	Press-board	Hard Rubber
$3\frac{1}{4}$ x $4\frac{1}{4}$	\$.10	\$.20
4 x 5	.15	.25
5 x 7	.20	.35
$6\frac{1}{2}$ x $8\frac{1}{2}$.25	.50
8 x 10	.35	.65
11 x 14	.50	1.00

Holder Kits

(Wood)

For holding small plates in large plate holders, made of well seasoned material that will not warp. They are invaluable in many instances.

Size Outside	Size of Opening for Plate		Prices
4 x 5	$3\frac{1}{4}$ x $4\frac{1}{4}$		\$.20
5 x 7	$3\frac{1}{4}$ x $4\frac{1}{4}$	4 x 5	.25
5 x 8	$3\frac{1}{4}$ x $4\frac{1}{4}$	4 x 5	.25
$6\frac{1}{2}$ x $8\frac{1}{2}$	$3\frac{1}{4}$ x $4\frac{1}{4}$	$4\frac{1}{4}$ x $6\frac{1}{2}$.30
8 x 10	4 x 5	5 x 7	.40
11 x 14	8 x 10	$6\frac{1}{2}$ x $8\frac{1}{2}$.50
14 x 17	10 x 12	11 x 14	.80

Holder Kits

(Metal)

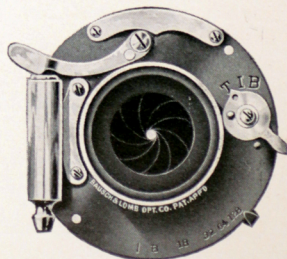
These kits are made entirely of metal and automatically center the plate and securely hold it in position. They are furnished in four sizes only.

Size Outside	Size of Opening for Plate		Prices
4 x 5	$3\frac{1}{4}$ x $4\frac{1}{4}$		\$.20
5 x 7	$3\frac{1}{4}$ x $4\frac{1}{4}$	4 x 5	.25
$6\frac{1}{2}$ x $8\frac{1}{2}$	$3\frac{1}{4}$ x $4\frac{1}{4}$	4 x 5	.30
8 x 10	4 x 5	5 x 7	.40
		$6\frac{1}{2}$ x $8\frac{1}{2}$	

Gem Automatic Shutter

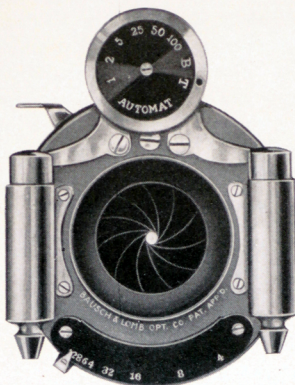
This is a simple and convenient little shutter and well adapted for hand camera work; fitted for time, bulb, or snap shots, and has an Iris diaphragm. It is always set and works automatically by bulb or finger release.

Price: \$4.00



B. & L. Automatic Shutter

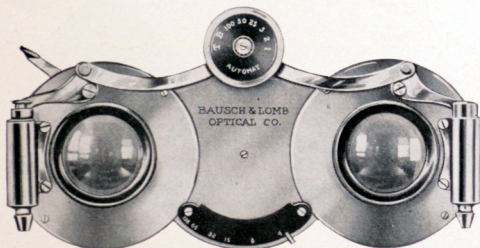
This shutter is strictly automatic and especially constructed to secure compactness, convenience in operation and the greatest range of speeds and apertures, together with accuracy of timing. For all except extremely rapid exposures it is all that is required, giving speeds of 1, 1/2, 1/5, 1/25 and 1/100 seconds. For time exposures, one pressure of the bulb the shutter remains open, closing when the second pressure is applied. For bulb exposure, the shutter remains open as long as pressure is applied to the bulb, closing when bulb is released. An Iris diaphragm regulates the size of the stop to be used.



Prices : No. 1 for $3\frac{1}{4} \times 4\frac{1}{4}$, 4×5 and 5×7
 No. 2 for $6\frac{1}{2} \times 8\frac{1}{2}$ and 8×10

\$10.00
 12.00

B. & L. Stereo Automatic Shutter

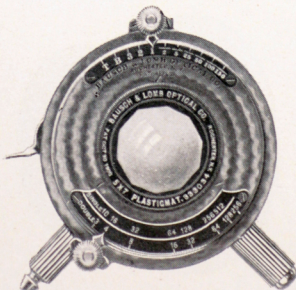


Price : \$20.00

This shutter is in reality a double automatic, made up by a combination of two automatic shutters, both working in unison. It is adapted for fitting all desirable lenses for stereo photography.

B. & L. Volute Shutter

The Volute represents the highest type of diaphragm shutter. The diaphragm can be varied from pin hole to any size desired. When the exposure is made the shutter opens instantly and remains open to the fullest extent until the exposure is completed, when it closes instantly, thus giving a correct exposure for all speeds. Exposure can be made by bulb or finger release. Speed limit, 1/150 second.



Prices : No. 1 for $3\frac{1}{4} \times 4\frac{1}{4}$, 4×5 and 5×7
 No. 2 for $6\frac{1}{2} \times 8\frac{1}{2}$ and 8×10

\$18.00
 20.00

Focal-Plane Shutter

For high speed the superior advantages of the new Focal-Plane Shutter have come to be thoroughly appreciated. It is capable of giving results that cannot be obtained by any other form of shutter.

The short exposures obtainable with the Focal-Plane Shutter are due to the fact that only a part of the plate is exposed at once. The shutter consists of a roller blind working in front of and close to the plate. The blind has a narrow slit in it, which travels rapidly across the plate. The speed is regulated by means of a small knob that winds up the driving spring, and also by altering the width of the adjustable slit. The speed indicator is always fitted to this shutter unless otherwise ordered.

Prices: 4 x 5, \$22.50 5 x 7, \$25.00 6 1/2 x 8 1/2, \$30.00 8 x 10, \$35.00

Premo Ray Screen

This screen is of great assistance in producing cloud effects in outdoor photography. By the use of this screen a more equal exposure can be obtained of sky, clouds and landscape, thus bringing out the detail of subject without losing cloud effect.

Size	Outside Diameter	Diameter of Lens	Prices
No. 1	1 1/2 in.	1 1/4 in.	\$.40
No. 2	2 in.	1 3/4 in.	.50
No. 3	3 1/4 in.	2 7/8 in.	.75



Lenses

There are many anastigmat lenses offered to the public by various manufacturers.



In making a selection it is important that the nature of work that you expect to do be carefully considered. We have made a careful study of high grade lenses and list below a few of the most desirable that we can highly recommend for use with Premo cameras.

Being in a position to supply all lenses at the same rate as offered by the makers it will be to the advantage of the purchaser to order the complete outfit from us. Lenses not listed in our catalogue will be furnished promptly when desired.

B. & L.-Zeiss Tessar Lens—Series II-b, $f:6.3$

The Tessar is an unsymmetrical doublet of four very thin lenses. The image possesses a sharpness not previously thought of in connection with such great aperture and rapidity. The corrections are perfect, the accuracy and precision of the image extending over a field of great angular area.

No.	Size of Plate	Equivalent Focus	Diameter	Price
4	$3\frac{1}{4} \times 4\frac{1}{4}$	$5\frac{3}{8}$ in.	$1\frac{5}{16}$ in.	\$ 33.50
5	4×5	$6\frac{1}{8}$ in.	$1\frac{1}{8}$ in.	40.00
6	5×7	$8\frac{1}{4}$ in.	$1\frac{7}{16}$ in.	59.50
8	$6\frac{1}{2} \times 8\frac{1}{2}$	12 in.	$2\frac{1}{8}$ in.	118.50
9	8×10	$14\frac{3}{8}$ in.	$2\frac{7}{16}$ in.	154.00

B. & L. Plastigmat Lens, $f:6.8$

The Plastigmat has excellent covering power and good anastigmatic correction, besides being a lens of great brilliancy. The two combinations of this lens are similar, being composed of four single lenses each. The foci chosen for the various sizes of the series are longer than has been customary heretofore, and as a result in every case the plate is perfectly covered with the full opening of the lens, working at $f:6.8$.

No.	Size of Plate	Equivalent Focus	Diameter	Prices
1	$3\frac{1}{4} \times 4\frac{1}{4}$	$5\frac{1}{4}$ in.	$1\frac{3}{16}$ in.	\$34.00
2	4×5	$6\frac{1}{4}$ in.	$\frac{7}{8}$ in.	40.00
3	5×7	$7\frac{1}{2}$ in.	1 in.	48.00
4	5×8	$9\frac{1}{4}$ in.	$1\frac{3}{8}$ in.	55.00
5	$6\frac{1}{2} \times 8\frac{1}{2}$	11 in.	$1\frac{5}{8}$ in.	75.00
6	8×10	13 in.	$1\frac{7}{8}$ in.	90.00

B. & L. Zeiss Convertible Protar Lens— Series VIIa

For use in hand cameras this lens is especially recommended, excellent not only in optical qualities but in its adaptability with the limited space allowed in these instruments for a lens. Convertible anastigmats are doublet lenses. They are made up of eight elementary lenses arranged in pairs, two pairs in each system. The covering and defining power of this lens is faultless. This lens is convertible into three lenses of different foci and angle.

No.	Size of Plate Covered with Full Aperture	Focus of Front Lens	Focus of Back Lens	Combined Focus	Speed	Prices
2	$3\frac{1}{4} \times 4\frac{1}{4}$ in.	9 in.	$7\frac{1}{4}$ in.	$4\frac{1}{2}$ in.	$f:7$	\$ 54.50
3	4×5 in.	$11\frac{1}{2}$ in.	$7\frac{1}{4}$ in.	5 in.	$f:7-7$	59.50
5	$4\frac{1}{4} \times 6\frac{1}{2}$ in.	$11\frac{1}{2}$ in.	9 in.	$5\frac{3}{4}$ in.	$f:7$	63.00
8	5×7 in.	14 in.	$11\frac{1}{2}$ in.	7 in.	$f:7$	75.00
9	5×8 in.	$16\frac{1}{2}$ in.	$11\frac{1}{2}$ in.	$7\frac{1}{2}$ in.	$f:7-7$	87.50
11	$6\frac{1}{2} \times 8\frac{1}{2}$ in.	$16\frac{1}{2}$ in.	14 in.	$8\frac{1}{2}$ in.	$f:7$	94.50
12	$6\frac{1}{2} \times 8\frac{1}{2}$ in.	$19\frac{1}{4}$ in.	14 in.	$9\frac{1}{4}$ in.	$f:7-7$	115.50
17	8×10 in.	$23\frac{1}{2}$ in.	$19\frac{1}{4}$ in.	12 in.	$f:7$	167.50

Goerz Double Anastigmat Lens

f: 6.8—Series III

Goerz lenses are universal in character. At full aperture they admit of instantaneous photographs embracing an angle of seventy degrees, even on dull days. As the image is perfectly sharp, even with small apertures, the definition, brilliancy, and depth of every point of the field are absolutely uniform, hence perfectly sharp wide angle, instantaneous photographs may be taken. The back lens, the focus of which is about double that of the entire objective, may, by itself, be used as a landscape lens.

No.	Size of Plate	Equivalent Focus	Prices
0	3 $\frac{1}{4}$ x 4 $\frac{1}{4}$ in.	4 $\frac{3}{4}$ in.	\$ 37.50
1	4 x 5 in.	6 in.	45.00
2	4 $\frac{3}{4}$ x 6 $\frac{1}{2}$ in.	7 in.	51.50
3	5 x 8 in.	8 $\frac{1}{4}$ in.	62.50
4	6 $\frac{1}{2}$ x 8 $\frac{1}{2}$ in.	9 $\frac{1}{2}$ in.	75.50
6	8 x 10 in.	12 in.	107.00

Planatograph Lens—*f*: 8

This lens was designed and perfected by us and forms a part of the regular equipment for many of our cameras. It is especially suitable for portraits, groups, architecture, landscapes and instantaneous work.

The Planatograph is a lens of the double symmetrical type. The back combination used alone increases the image on the ground glass to twice the size obtained when the combinations are used together. The Planatograph is fully corrected, gives equal illumination of the field and covers the plate admirably.

Size	Diameter of Lens	Equivalent Focus	Prices
3 $\frac{1}{4}$ x 4 $\frac{1}{4}$	1 in.	6 in.	\$12.00
4 x 5	1 in.	6 $\frac{1}{4}$ in.	12.00
5 x 7	1 $\frac{1}{8}$ in.	8 in.	14.00
6 $\frac{1}{2}$ x 8 $\frac{1}{2}$	1 $\frac{1}{2}$ in.	11 in.	17.00
8 x 10	1 $\frac{3}{4}$ in.	13 in.	20.00

B. & L. Zeiss Protar—Series V, *f*: 18

The lenses of this series are designed for extreme wide angle work. They have a very great speed and covering power and an effective angle which equals or exceeds any other wide angle lens. The field of this lens embraces 110 degrees.

No.	Size	Equivalent Focus	Prices
1	4 $\frac{1}{4}$ x 6 $\frac{1}{2}$ in.	3 $\frac{3}{8}$ in.	\$22.50
2	5 x 7 in.	4 $\frac{3}{8}$ in.	22.50
3	6 $\frac{1}{2}$ x 8 $\frac{1}{2}$ in.	5 $\frac{9}{16}$ in.	28.00
4	8 x 10 in.	7 $\frac{3}{16}$ in.	35.00

We also list the Rochester Symmetrical Wide Angle Lens, which has an angle of from 80 to 90 degrees.

No.	Size	Equivalent Focus	Prices
1	4 x 5 in.	3 1/2 in.	\$10.00
2	5 x 7 in.	5 in.	12.00
3	6 1/2 x 8 1/2 in.	6 1/2 in.	15.00
4	8 x 10 in.	8 in.	18.00

Lens Flanges

For attaching the lens to the front board.

Number	1	2	3	4	5	6	7	8	9	10	11
Diameter, ins.	1 1/2	1 3/4	2	2 1/4	2 1/2	3	3 1/2	4	5	5 1/2	6
Price, each	\$.50	.50	.75	1.00	1.00	1.25	1.50	1.75	2.00	2.50	3.00

LENS CAPS

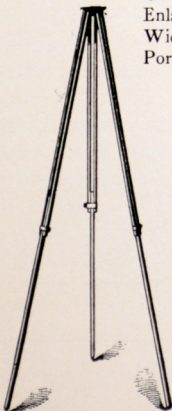
Number	1	2	3	4	5	6	7	8	9	10	11	12
Diameter, ins.	1 1/2	1 3/4	1 7/8	2 1/8	2 3/8	2 3/4	2 1/2	3 1/8	3 1/8	4 1/8	4 1/8	5 1/8
Price, each	\$.60	.60	.65	.70	.70	.75	.80	.90	1.00	1.10	1.20	1.25

Premo Optical Outfit

This outfit consists of a set of supplementary lenses, a ray filter and duplicator, and is for use with any camera with lens barrel that corresponds in size. These lenses slip over the regular lens of the camera like a cap. They give the owner of one good objective lens the advantage of five different focal lengths. These combinations will be supplied separately when desired. The six combinations are neatly enclosed in a plush lined case leather covered.



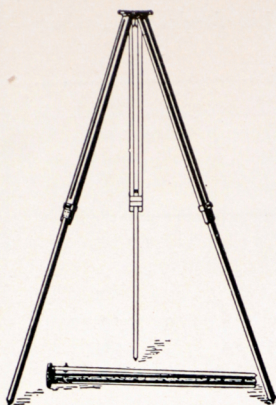
Prices:	Outfit complete for 4 x 5, diameter of lens 1 5/8 ins.	\$6.00
	Outfit complete for 5 x 7, diameter of lens 1 5/8 ins.	6.00
	Enlarging and Copying Lens \$1.25	Tele Photo Lens 1.25
	Wide Angle Lens 1.25	Ray Filter 1.00
	Portrait Lens 1.25	Duplicator .40



Ray Sliding Tripod

Although very light this is an extremely rigid tripod and is designed for cameras up to and including 4 x 5 size. The wood is straight grain spruce with shellac finish, the metal trimmings and head lacquered brass. The weight complete, including head and screw, is but 15 ounces. When extended for use the length can be made to vary from 30 to 54 inches.

Price: \$.80



Carlton Sliding Tripod

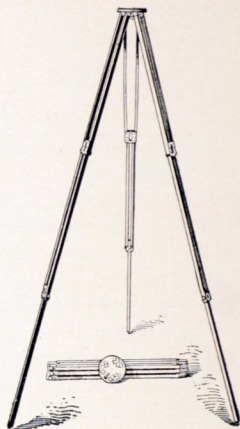
As a rigid tripod none will be found more satisfactory than the Carlton. The legs are made in three sections, rendering very firm support. The top is wood covered with cloth. The two smaller sizes are made of spruce, the larger of ash. They are of good finish and the metal parts are lacquered brass.

Style	Size of Camera	Weight	Prices
No. 1	5 x 7 and smaller	1 lb. 15 ozs.	\$2.00
No. 2	5 x 8 and 6 1/2 x 8 1/2	2 lbs. 12 ozs.	2.50
No. 3	8 x 10 and 10 x 12	4 lbs. 15 ozs.	3.00

Combination Tripod

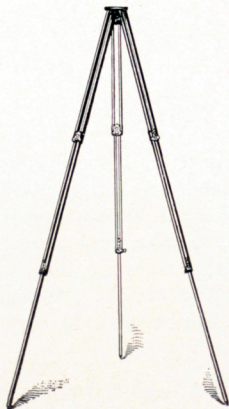
This tripod is made on the sliding and folding principle, which produces a very compact as well as a rigid support. The wood parts are ash and the finish is of the very best. The trimmings are of brass with lacquer finish. The length when fully extended is fifty-six inches, when folded twenty-two inches.

Style	Size of Camera	Weight	Prices
No. 2 1/2	6 1/2 x 8 1/2 and smaller	2 lbs. 3 ozs.	\$3.00
No. 3	8 x 10 and 10 x 12	4 lbs. 6 ozs.	3.50
No. 4	11 x 14 and 14 x 17	7 lbs. 1 oz.	4.50
No. 5	17 x 20 and 20 x 24	8 lbs. 8 ozs.	6.00



R. O. C. Tripod

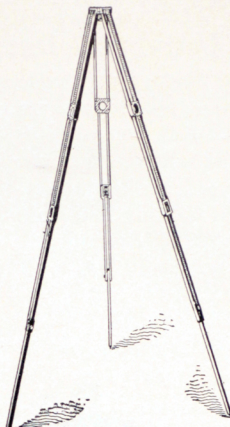
The R. O. C. tripod is of the combination type. The wood parts are maple, beautifully finished in natural color. The head is metal with wooden top, leather covered. The clamp bands are of new design, which permits clamping more readily than with milled head nuts as usually supplied. The metal parts are of brass well finished and lacquered. A very desirable tripod for use with any camera up to and including 5 x 7 size. Length extended fifty-six inches, when folded twenty-two inches.



Style	Weight	Price
R. O. C. Tripod	34 ounces	\$1.70

Premo Tripod

Very light and compact, as well as rigid, makes this a very popular tripod. The construction consists of four sections, the first sliding into the second, these two into the third, while the upper section folds back upon the third. A patent locking device, found only on Premo tripods, produces extreme rigidity. The length when extended is 55 inches, when folded 16 inches only. The Nos. 1 and 2 are constructed of spruce, natural finish, with buffed brass trimmings, lacquer finish and aluminum head. The Nos. 3 and 4 are ash with Flemish oak finish, with metal parts nickered and wooden head.



Style	Size of Camera	Weight	Prices
No. 1	3 1/4 x 4 1/4 and 4 x 5	15 ozs.	\$4.00
No. 2	4 x 5 and 5 x 7	1 lb. 7 ozs.	5.00
No. 3	5 x 7 and 6 1/2 x 8 1/2	2 lbs. 12 ozs.	6.00
No. 4	6 1/2 x 8 1/2 and 8 x 10	4 lbs. 2 ozs.	7.00

Rochester R. O. C. Dry Plate



Since the introduction of the R. O. C. dry plate the demand has steadily increased and at the present time a large number of leading photographers throughout the country, as well as many advanced amateurs, have selected this brand for their entire work. The R. O. C. is a plate of general utility, one that may be used successfully under all conditions. They are extremely rapid.

Size	Dozen in Case	Price per Dozen	Size	Dozen in Case	Price per Dozen
2 1/2 x 2 1/2	30	\$.25	5 x 8	20	\$1.25
3 1/2 x 3 1/2	30	.40	6 1/2 x 8 1/2	12	1.65
3 1/4 x 4 1/4	30	.45	8 x 10	10	2.40
4 x 5	30	.65	10 x 12	4	4.20
4 1/4 x 6 1/2	30	.90	11 x 14	4	6.00
5 x 7	20	1.10			

Premo Candle Lamp

This little candle lamp is of folding design and can be readily carried in the pocket. The top and bottom are made of metal, the sides of special fabric. It uses a large candle and illuminates from all sides, giving a strong, safe light for the dark room.

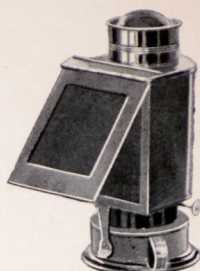
Prices :	Premo Candle Lamp	\$.25
	Candles, per dozen	.30
	Candles, per gross	3.00



Universal Dark Room Lamp

This is a very popular lamp and produces a clear, steady light, perfectly safe and efficient for the dark room. It has a combination orange and ruby glass for use, singly or together. The broad wick which is furnished regulates from the outside and an adjustable shield prevents white light escaping.

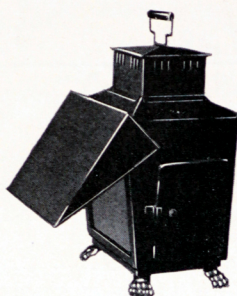
Prices : No. 1 \$.80 No. 2 \$1.00



Premier Lamp

This lamp has distinct features which make it popular with advanced amateurs who develop and print their own negatives. It affords three different forms of light. The front light is a soft ruby light for developing. The door on the left side when opened will give a clear white light for use in printing developing papers, bromide papers or transparencies. The door on the right side when opened gives a soft white, opal light for examining negatives or transparencies.

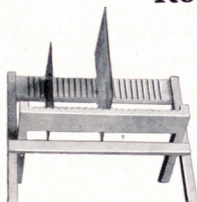
Price : \$3.75



Rochester Negative Rack

This is a very substantial article made of the best seasoned cherry, accommodating negatives of any size. It folds flat when not in use and prevents the possibility of scratching negatives while drying.

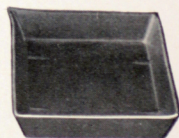
Prices : No. 1, for 12 Negatives \$.20
No. 2, for 24 Negatives .25



Developing Trays

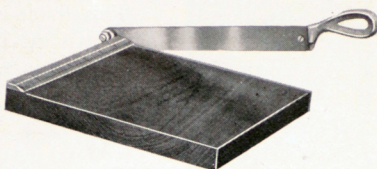
Electrose Trays are light in weight, not easily broken, and are not affected by the action of chemicals ; have ridges on the bottom and are a superior article.

Prices : $3\frac{1}{4} \times 4\frac{1}{4}$ \$.12 5 x 8 \$.25
4 x 5 .12 $6\frac{1}{2} \times 8\frac{1}{2}$.35
5 x 7 .20 8 x 10 .50



Premo Trimming Boards

This is a reliable trimming board at a moderate price, constructed of hard wood with natural finish. The blades are of the best steel, and a rule is fitted to the board for measuring prints.



No. 1, 4 x 5 in., \$.40

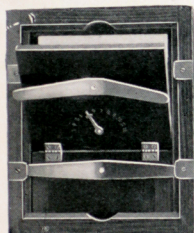
No. 2, 7 x 7 in., \$.60

Card Mounts

We do not list a great assortment of card mounts, selecting only what we consider the most desirable. They have beveled edges.

Carbon Black or Scotch Gray, Plain				Carbon Black or Scotch Gray, Embossed and Printed Border			
No.	For Pictures	Per 100	Per 1000	No.	For Pictures	Per 100	Per 1000
601	3 1/4 x 4 1/4	\$1.25	\$ 9.50	701	3 1/4 x 4 1/4	\$1.60	\$12.00
602	4 x 5	1.75	11.00	702	4 x 5	2.00	15.00
603	5 x 7	2.15	14.00	703	5 x 7	3.00	22.00

Rochester Printing Frame



The Rochester Printing Frame is very substantial, made of the best seasoned cherry. The springs are of the finest brass, riveted to the back. A tongue and groove in the back where the two parts hinge prevent the possibility of light reaching the print from the rear. At the back is a tally for recording the number of prints made. This frame is recommended for professional use as it will not wear out and can be used indefinitely.

Size	Prices	Size	Prices
4 1/4 x 6 1/2	\$.42	11 x 14	\$1.80
5 x 7	.50	14 x 17	2.40
6 1/2 x 8 1/2	.60	17 x 20	3.00
8 x 10	.75		

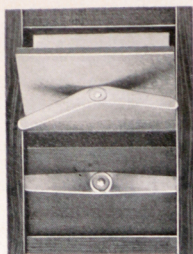
Cyclone Printing Frame

This frame is made of japanned iron and will not warp or twist. It is non-breakable, light and convenient. An easel attachment gives the advantage of placing the frame at any angle required. It casts no shadow and prints to the size of the plate and offers many advantages of importance. This frame is made in three sizes only: 3 1/2 x 3 1/2, 3 1/4 x 4 1/4 and 4 x 5.

Price: \$.25



Amateur Printing Frame

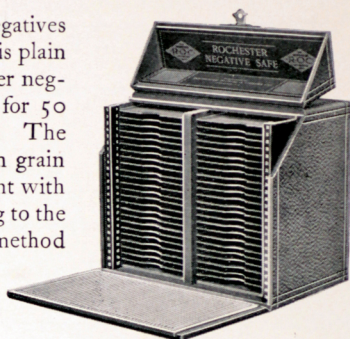


This frame is light and strong ; made of the best seasoned cherry and with reliable spring brass mountings. It is of good finish, durable and thoroughly reliable in every way.

Size	Prices	Size	Prices
$3\frac{1}{4} \times 4\frac{1}{4}$	\$.25	$4\frac{1}{4} \times 6\frac{1}{2}$	\$.35
4 x 5	.25	5 x 7	.35

Rochester Negative Safe

The advantage of keeping negatives where they may be located readily is plain to all camera users. The Rochester negative safe provides a safe receptacle for 50 $3\frac{1}{4} \times 4\frac{1}{4}$, 4 x 5 or 5 x 7 negatives. The safe is well made and covered with grain leather. It has a drop door in front with a memorandum tablet corresponding to the number of shelves within. This method easily locates the desired negative, which will always be found clean and free from dust.



Prices : $3\frac{1}{4} \times 4\frac{1}{4}$ \$3.00 4 x 5 \$3.50 5 x 7 \$4.00

Developing and Printing

Our facilities for developing and finishing plates and films all complete are the best. Our customers can feel assured of the best results.

Size	Developing only	Printing and Mounting only	Developing, Printing and Mounting
$3\frac{1}{4} \times 4\frac{1}{4}$	\$.04	\$.06	\$.08
4 x 5	.05	.07	.10
5 x 7	.06	.10	.15
$6\frac{1}{2} \times 8\frac{1}{2}$.10	.20	.25
8 x 10	.12	.24	.30

Print Rollers

A very inexpensive article for use in mounting prints. They consist of a piece of pure rubber tubing placed over an accurately turned dowel and mounted to a holder in a manner that permits using to advantage. Prices : 4-inch, \$.20 ; 6-inch, \$.30.

R. O. C. Developing Powders

These powders are prepared for the development of the Premo Film Pack. They are also very desirable for the development of roll film or glass plates. They are put up in powders sufficient for four ounces developer and a package contains twelve powders. Per package : \$.50.

Carrying Cases



Premo cases are made of the best sole leather, with the exception of those for cameras of box form, also Nos. 1 and 2 Pony, which are of board covered with leather. Cases for the Star Premo, Pony Premo 6 and 7 and Premo Supreme are lined with velvet and highly ornamented.

Camera	3¼ x 4¼	4 x 5	5 x 7	6½ x 8½
Premo Box Film Camera	\$ 1.50	\$ 1.75	\$	\$
Premo Folding Film Camera No. 1	1.50	1.75		
Premo Folding Film Camera No. 3	1.50	1.75		
Magazine Cyclone	2.25	2.50		
Pocket Premo	2.50			
Pocket Premo C	1.50			
Star Premo	4.00	5.00		
Pony Premo Nos. 1 and 2	1.50	1.50		
Pony Premo Nos. 3 and 4		4.00	5.00	6.00
Pony Premo No. 6		5.00	6.00	8.00
Pony Premo No. 7		6.00	8.00	12.00
Premo Supreme		15.00	20.00	25.00
Premo Reflecting Camera		6.00		

Camera	5 x 7	6½ x 8½	8 x 10	11 x 14	14 x 17
R. O. C. View	\$ 1.75	\$ 2.00	\$ 2.25	\$	\$
Carlton and Universal	3.00	3.50	4.00	5.00	6.50
Empire State	2.00	2.25	2.50	3.25	5.00

Bellows

Extra bellows will be supplied for cameras when desired, as follows:

Size	Camera	Price
3¼ x 4¼	Folding Film, Nos. 1 and 3	\$ 1.75
3¼ x 4¼	Pocket Premo C	1.75
3¼ x 4¼	Pocket Premo	1.75
3¼ x 5½	Folding Film, Nos. 1 and 3	2.00
4 x 5	Folding Film, Nos. 1 and 3	2.00
4 x 5	Star Premo	2.00
4 x 5	Pony Premos, Nos. 1, 2, 3 and 4	2.00
4 x 5	Pony Premos, Nos. 6 and 7	3.00
4 x 5	Premo Supreme	4.50
5 x 7	Pony Premos, Nos. 6 and 7, Empire State	4.00
5 x 7	Premo Supreme	6.00
5 x 7	R. O. C. View	3.00
6½ x 8½	Pony Premos, Nos. 6 and 7, Empire State	5.00
6½ x 8½	Premo Supreme	7.50
6½ x 8½	R. O. C. View	4.00
8 x 10	R. O. C. View	5.00
8 x 10	Empire State	6.00
11 x 14	Empire State	8.00
14 x 17	Empire State	10.00

Miscellaneous

Blotting Paper, 19 x 24, per doz.	\$1.00	Lens Boards :	
Brushes :		for Premos, larger	\$.40
Camel's Hair, 3 inch	.80	for Stereo Cameras	.40
Bristle, 1 inch	.15	For View Cameras, up to 8 x 10	.40
Bristle, 2 inch	.25	For View Cameras, larger	.70
Bristle, 3 inch	.40	Orange or Ruby Fabric, per sq. yd.	.60
Bulbs and Tubes	.35	Orange Paper, per dozen	.25
Focusing Cloth, Gossamer	.50	Premo View Finder	1.50
Glass Funnels, Plain, ½ Pint	.15	Premo Spirit Level	.40
Glass Funnels, Fluted, 1 Pint	.25	Paste for Mounting Prints :	
Glass for Univer. Ruby Lamp, each	.10	4 oz. jar	.20
Glass Graduates, 4 ounce	.30	8 oz. jar	.35
Glass Graduates, 8 ounce	.40	1 oz. tube	.10
Glass, Measuring, 4 ounce	.15	2 oz. tube	.15
Ground Glass Frames :		4 oz. tube	.20
4 x 5	.50	Reversible Backs :	
5 x 7	.60	for View Cameras, 5 x 7	7.50
6½ x 8½	1.00	for View Cameras, 6½ x 8½	9.00
8 x 10	1.25	for View Cameras, 8 x 10	11.00
Ground Glass :		for View Cameras, 11 x 14	14.00
4 x 5	.15	Screws for Tripods, 1, 2 and 3	.25
5 x 7	.20	Screws for Tripods, 4 and 5	.40
6½ x 8½	.25	Shoulder Straps :	
8 x 10	.30	36, 42 and 48 inches	.25
Hydrometers	.40	54, 56 and 60 inches	.30
Lens Boards :		66 inches	.40
for Premos, up to 5 x 7	.25	Tops for Tripod	.75
		Tubing per foot	.10

Terms

Prices as listed in this catalogue are net except to dealers.

When ordering always give shipping directions, whether by freight, express or otherwise. If not stated, we will use our discretion.

All orders for shipments C. O. D. must be accompanied with sufficient remittance to cover transportation both ways.

Orders for mail shipment must be accompanied with remittance for full amount of purchase, including postage, or shipment will be made by express.

Remit by draft on New York, post office order, registered letter or express money order.

Personal checks from parties unknown to us will be collected through our bank before shipment will be made.

All goods are carefully packed and delivered to transportation companies and we cannot be held responsible for any damage during transit.

All prices are f. o. b. at Rochester, N. Y.

Rochester Optical Co.
45 South Street, Rochester, N. Y.

