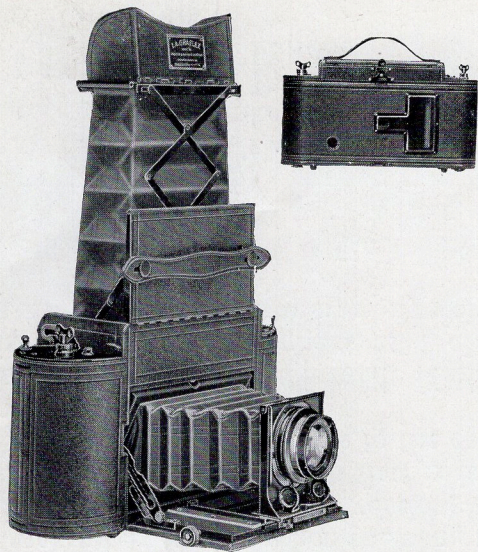


GRAFLEX AND GRAPHIC CAMERAS





The 1 A Graflex
Autographic

PRICES

	2½x4¾
1A Graflex without lens	\$60.00
With Zeiss Kodak Anastigmat Lens, f.6.3, No. 2	79.00
With B. & L.-Zeiss Tessar Lens, Series Ic, f.4.5, No. 14	95.00
With Cooke Lens, Series II, f.4.5, No. 20½	95.50
Leather Case for 1A Graflex, extra	5.00
Extra lens boards, each40

SPECIFICATIONS: Outside dimensions, closed, 9½ x 3 x 5¼; focal capacity, 6½ in.; weight, 4 lbs.; size of lens board, 2¼ x 2¾ in.; minimum focus of lenses accommodated, 4¾ in. For Film only.

The 1 A Graflex

THE 1A Graflex is an ideal camera for the automobilist, tourist, or anyone desiring a thoroughly efficient reflecting camera contained in the least possible space.

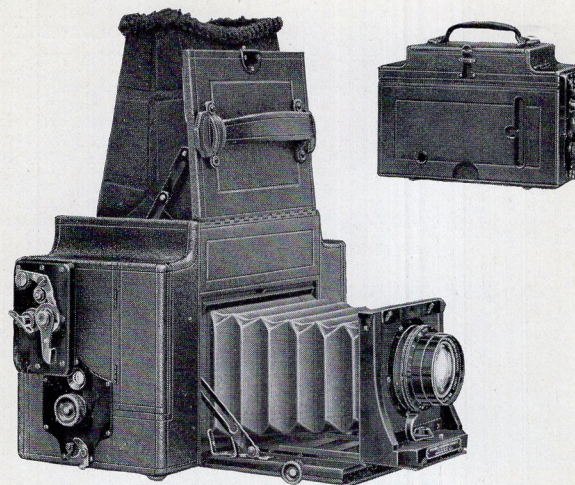
This camera takes regular 1A Autographic Kodak film and makes a picture of very pleasing proportions, 2½ x 4¼ inches. It is fitted with the new Autographic feature, which enables the operator to title or make a record on the negative when the picture is made. As in the other Graflex models, this camera is equipped with a focal plane shutter, giving exposures of any duration from time to 1/1000 of a second and the image may be seen the size it will appear in the negative, up to the instant of exposure, right side up.

The 3 A Graflex

ALL the advantages of a reflecting camera of the highest possible type, with film simplicity and convenience, combine to make the 3A the most popular of the Graflex models. The 3A Graflex makes pictures of the most pleasing proportions, 3¼ x 5½, on regular 3A Autographic Kodak film, which may be obtained wherever camera supplies are sold.

The 3A Graflex is fitted with the Autographic feature, which allows the operator to date and title the negatives permanently and almost instantly, at the time the picture is made.

Built into, and part of the 3A Graflex, is the regular Graflex Focal Plane Shutter, giving instantaneous exposures from 1/10 to 1/1000 of a second, as well as time exposures of any duration. This shutter is fitted with the safety device which prevents winding the shutter until the mirror is set.

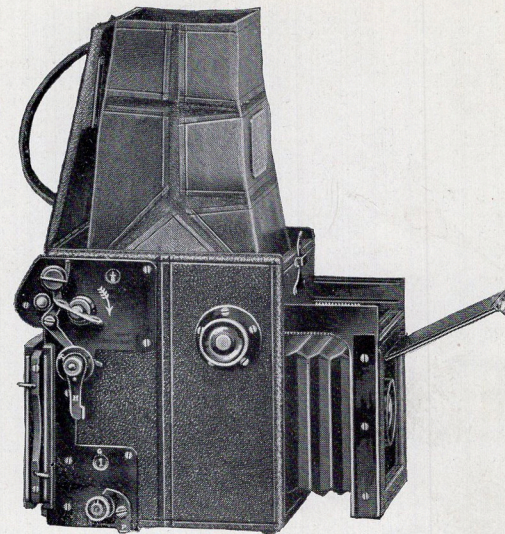


The 3 A Graflex
Autographic

PRICES

	3¼x5½
3A Graflex without lens	\$ 75.00
With Zeiss Kodak Lens, f.6.3, No. 4	101.25
With B. & L.-Zeiss Tessar Lens, Series Ic, f.4.5, No. 15a	125.00
With Cooke Lens, Series II, f.4.5, No. 21½	125.00
Leather Case for 3A Graflex, extra	7.00
Extra lens boards, each50

SPECIFICATIONS: Dimensions, 10¼ x 5 x 7; focal capacity, 10 in.; weight, 7 lbs.; size of lens board, 3¼ x 3¼ in.; minimum focus of lenses accommodated, 6¼ in. For Film only.



The Auto Graflex Junior

PRICES

	2¼x3¼
Auto Graflex Junior, 2¼ x 3¼, without lens, including one double plate holder	\$35.00
With Zeiss Kodak Anastigmat Lens No. 1	53.50
With B. & L.-Zeiss Tessar, Series Ic, f.4.5, No. 13	66.00
With Cooke Lens, Series II, f.4.5, No. 20	66.00
Graflex Roll Holder	6.00
Graflex Magazine Plate Holder, Model A, extra	10.00
Graflex Film Pack Adapter, extra	3.00
Leather case for camera and double plate holder, with lock and key	4.50
Leather case for six plate holders, with lock and key	2.50
Extra Graflex plate holders, each	1.50

SPECIFICATIONS: Dimensions closed, 5 x 4¾ x 5; focal capacity, 5½ in.; weight, 39 ozs.; minimum focus of lens accommodated, 4 in.

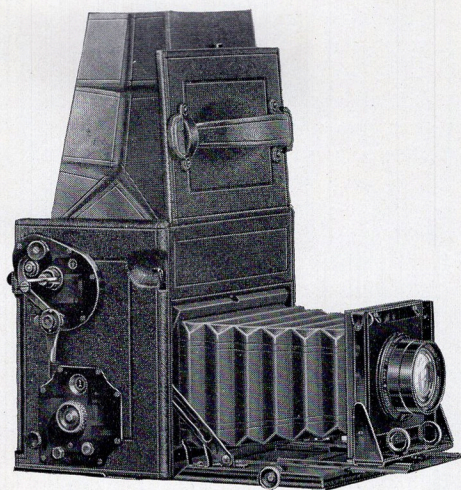
The Compact Graflex

THE Compact Graflex is the result of a well directed effort to supply a thoroughly efficient $3\frac{1}{4} \times 5\frac{1}{2}$ reflecting camera in the smallest possible size consistent with the accuracy and rigidity of construction necessary in a reflecting camera.

The focusing hood is made amply large to afford full view of the focusing screen when making exposures when the camera is held in position for making vertical negatives. This hood is made so that it is detachable, affording easy access to the focusing screen.

The lens board support is made of metal, and is fitted with spring actuated clamp which firmly grips the track at any desired point.

The Compact Graflex is fitted with the regular Graflex Focal Plane Shutter, permitting exposures of any duration from time to $1/1000$ of a second. The back of the camera is constructed to take the Graflex Plate Holder, Graflex Film Pack Adapter, Graflex Magazine Plate Holder or the new Graflex Roll Holder.

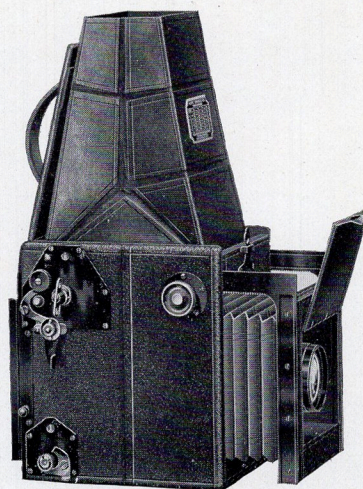


The Compact Graflex

PRICES

	$3\frac{1}{4} \times 5\frac{1}{2}$
Compact Graflex without lens, including one double plate holder	\$ 70.00
With Zeiss Kodak Anastigmat Lens, No. 4	96.25
With B. & L. Zeiss Tessar, Series Ic, No. 15a	120.00
With Cooke Lens, Series II, No. 21½	120.00
Graflex Roll Holder	8.00
Graflex Magazine Plate Holder, Model A	14.00
Graflex Film Pack Adapter, leather covered, extra	5.50
Leather Carrying Case for camera with plate holder or film pack adapter attached	6.00
Extra Graflex Plate Holders, $3\frac{1}{4} \times 5\frac{1}{2}$	2.50

SPECIFICATIONS: Dimensions when closed, $7 \times 4\frac{1}{2} \times 7$; focal capacity, 10 in.; weight, $5\frac{1}{2}$ lbs.; size of lens board, $3\frac{1}{4} \times 3\frac{1}{4}$; minimum focus of lens accommodated, 6 in.

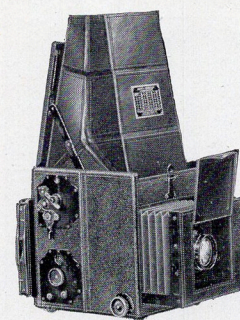


The Revolving Back Graflex Junior

PRICES

	$2\frac{1}{4} \times 3\frac{1}{4}$
Revolving Back Graflex Junior, without lens, including one double plate holder	\$ 65.00
With Zeiss Kodak Anastigmat Lens, f.6.3, No. 3	88.25
With B. & L. Zeiss Tessar Lens, Series Ic, f.4.5, No. 15	105.50
With Cooke Lens, Series II, f.4.5, No. 21	106.00
Graflex Roll Holder	6.00
Graflex Magazine Plate Holder, Model A	10.00
Graflex Film Pack Adapter	3.00
Leather case for camera and plate holder with lock and key	5.50
Extra Graflex plate holders, each	1.50

SPECIFICATIONS: Dimensions when closed, $6 \times 4\frac{1}{2} \times 6\frac{1}{4}$; focal capacity, $7\frac{1}{4}$ in.; weight, $3\frac{1}{4}$ lbs.; minimum focus of lens accommodated, $5\frac{1}{4}$ in.



The Auto Graflex

PRICES

	$3\frac{1}{4} \times 4\frac{1}{4}$	4x5	5x7
Auto Graflex without lens, including one double holder	\$50.00	\$ 60.00	\$75.00
No. 2	No. 3	No. 5	No. 5
With Zeiss Kodak Lens, f.6.3	69.00	83.25	109.50
With B. & L. Zeiss Tessar, Series Ic, f.4.5	No. 14	No. 15	No. 16
No. 20½	85.00	100.50	137.00
With Cooke, Series II, f.4.5	85.50	101.00	137.00
Graflex Roll Holder	7.00	8.00	9.00
Graflex Magazine Plate Holder, Model A, extra	12.50	13.50	15.00
Film Pack Adapter, leather covered, extra	4.50	5.00	7.50
Leather case for camera and Film Pack Adapter, with lock and key	6.00	7.00	9.00
Extra Graflex Plate Holders, each	2.50	2.50	3.50

SPECIFICATIONS

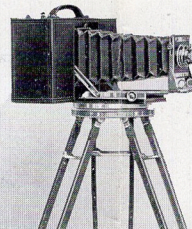
	$3\frac{1}{4} \times 4\frac{1}{4}$	4x5	5x7
Dimensions when closed	$5\frac{3}{4} \times 5\frac{3}{8} \times 6\frac{1}{4}$	$6\frac{3}{4} \times 6\frac{1}{4} \times 7\frac{1}{4}$	$9\frac{1}{4} \times 8\frac{1}{4} \times 8\frac{3}{4}$
Focal capacity	7 in.	8½ in.	12 in.
Weight	3 lbs. 10 ozs.	5 lbs.	8½ lbs.
Size of lens board	$2\frac{3}{4} \times 2\frac{3}{4}$ in.	3x3 in.	4x4 in.
Minimum focus of lenses accommodated	5 in.	6 in.	7½ in.

The No. 5 Cirkut Camera

This little camera effectively supplies the growing demand for a small, compact and thoroughly efficient panoramic camera.

A No. 5 Cirkut Camera will make a negative of any length up to 42 inches and uses Eastman Daylight Loading Cirkut Film in 5-inch rolls.

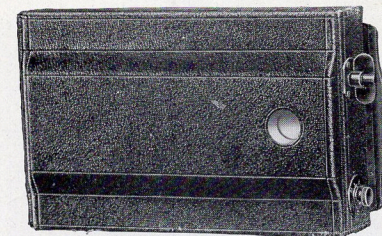
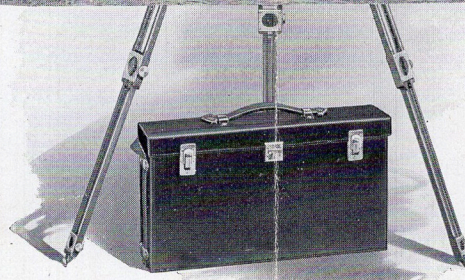
This instrument is constructed on the same principle and with the same careful attention to detail as the larger cameras.



A No. 5 Cirkut Camera complete weighs but 19 lbs. and the entire outfit is packed in one carrying case.

No. 5 Cirkut Camera complete, including Special Convertible Lens; $6\frac{1}{4}$, 11 and 14 inches, one No. 2 Crown Tripod, one Cirkut Tripod Top, gears, key, and carrying case to hold complete outfit.... \$100.00

NOTE—A Special Cirkut Catalogue containing full information about all Cirkuts will be mailed free on request.



Graflex Roll Holder 1915 Model

THE Graflex Roll Holder 1915 model takes the new Eastman Graflex Film, and will interchange with the Plate Holders on Graflex Cameras.

The Holder is substantially made and occupies the space of two Plate Holders. A retarding ratchet is provided whereby the film may be drawn absolutely flat after it is in position for exposure, affording a true recording plane.

GRAFLEX ROLL HOLDERS 1915 Model

$2\frac{1}{4} \times 3\frac{1}{4}$	For Graflex Roll Holder Film No. 50		\$6.00
$3\frac{1}{4} \times 4\frac{1}{4}$	For Graflex Roll Holder Film No. 51		7.00
$3\frac{1}{4} \times 5\frac{1}{2}$	For Graflex Roll Holder Film No. 52		8.00
4x5	For Graflex Roll Holder Film No. 53		8.00
5x7	For Graflex Roll Holder Film No. 54		9.00

Graflex Roll Holders will fit Graflex Cameras only

EASTMAN GRAFLEX FILM

No. 50	$3\frac{1}{4} \times 2\frac{1}{4}$	6 Exposures	\$.20
No. 51	$4\frac{1}{4} \times 3\frac{1}{4}$	6 Exposures	.35
No. 52	$5\frac{1}{2} \times 3\frac{1}{4}$	6 Exposures	.40
No. 53	5x4	6 Exposures	.45
No. 54	7x5	6 Exposures	.80

To avoid error order Film by number

The Telescopic Revolving Back Graflex

PRICES

	$3\frac{1}{4} \times 4\frac{1}{4}$	4x5
Telescopic R. B. Graflex without lens, including one double plate holder	\$ 90.00	\$100.00
With Zeiss Kodak Anastigmat, f.6.3	No. 3 113.25	No. 5 134.50
With B. & L. Zeiss Tessar, Ic, f.4.5	No. 15 130.50	No. 16 162.00
With Cooke Lens, Series II, f.4.5	No. 21 131.00	No. 21½ 150.00
Graflex Roll Holder	7.00	8.00
Graflex Magazine Plate Holder, Model A, extra	12.50	14.50
Film Pack Adapter, leather covered, extra	4.50	5.00
Leather case for camera and Film Pack Adapter, with lock and key	8.00	10.00
Extra Graflex Plate Holders, each	2.50	2.50

SPECIFICATIONS

	$3\frac{1}{4} \times 4\frac{1}{4}$	4x5
Dimensions when closed	$6\frac{3}{4} \times 5\frac{1}{2} \times 6\frac{3}{8}$	$8\frac{3}{8} \times 6\frac{3}{8} \times 7\frac{7}{8}$
Focal capacity	8½ in.	12 in.
Weight	4½ lbs.	6¾ lbs.
Size of lens board	$3\frac{1}{4} \times 4\frac{1}{4}$ in.	4x4 in.
Minimum focus of lens accommodated	5¾ in.	7¾ in.

DIN-2002

This circular contains a brief description of a few of the Graflex Cameras. Send for 64 page illustrated Graflex Catalogue.

Folmer & Schwing Division

EASTMAN KODAK COMPANY

Rochester, N. Y.

