

# ZEISS IKON CAMERAS AND ACCESSORIES

## CONFIDENTIAL Dealer Price List

Effective as of  
MAY 1st, 1961, this price list  
supersedes all previous price lists.

These prices are valid for dealers exclusively. According  
to the Federal Trade Commission, they must not be shown  
to the buying public.



CARL ZEISS, INC., 485 FIFTH AVENUE, NEW YORK 17, N. Y.  
Murray Hill 7-0260

*All prices, specifications and technical data subject to change without notice*

**SECTION A**  
**Contarex and**  
**Accessories**  
Page 1

**SECTION B**  
**Contax**  
**Accessories**  
Page 15

**SECTION C**  
**Contaflex and**  
**Accessories**  
Page 22

**SECTION D**  
**Tenax Automatic,**  
**Symbolica,**  
**Continette,**  
**Contessa,**  
**Contessa-matic,**  
**Contessa-matic E**  
**and Accessories**  
Page 29

**SECTION E**  
**Movilux 8A**  
**Projector,**  
**Moviscop Editors,**  
**Ikomat Slide**  
**Projector,**  
**Ikoscop Viewer**  
Page 35

**SECTION F**  
**Carl Zeiss. &**  
**Hensoldt**  
**Binoculars**  
Page 39



# NOTICE

Discounts and net prices are  
given in a separate "Discount and  
Price Schedule" (yellow cover).





# CONTAREX, CONTAREX SPECIAL CAMERAS AND ACCESSORIES

35mm



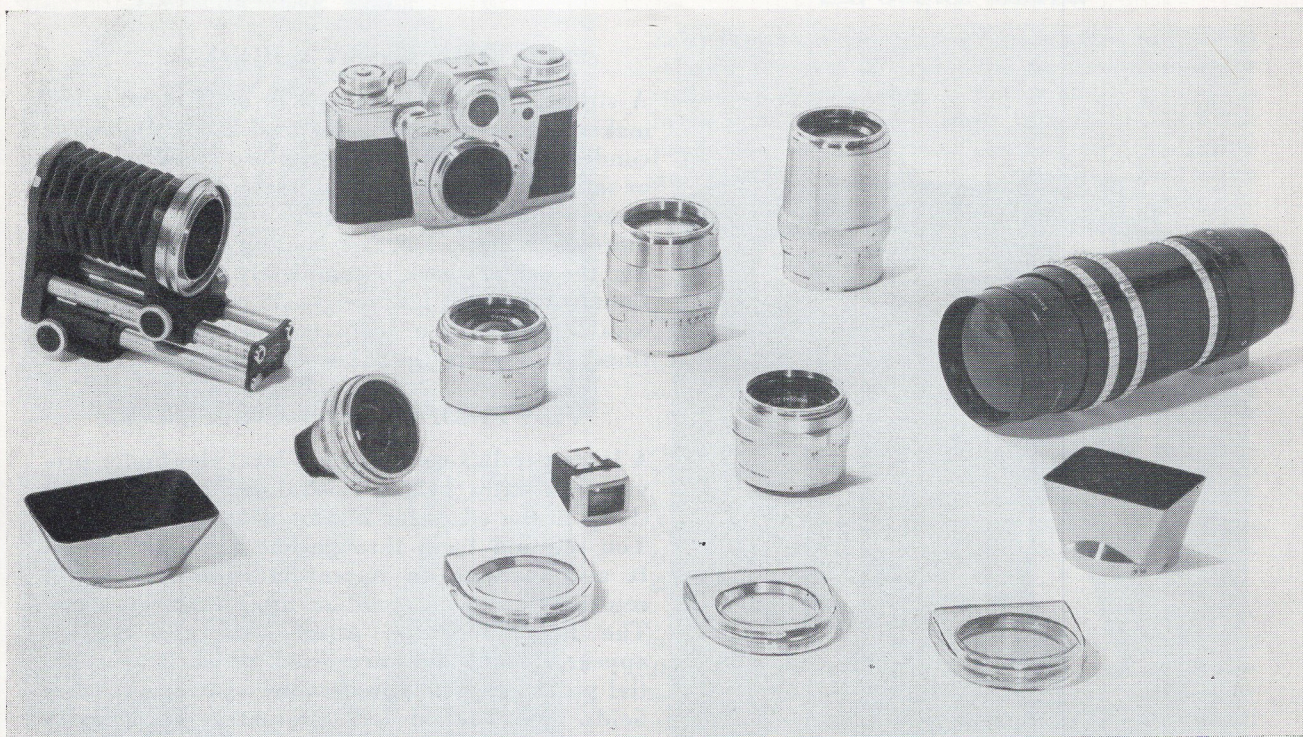


## THE CONTAREX CAMERA



The Contarex is the top-ranking Zeiss Ikon camera, a camera of distinction in performance as well as in appearance. It combines the features of two leading designs: the famous Contax with completely interchangeable lens mount and the unique Contaflex single-lens reflex camera. Needless to say, such a combination of two outstanding camera designs sets new standards in versatility, precision and convenience, and it lends prestige to its owner.



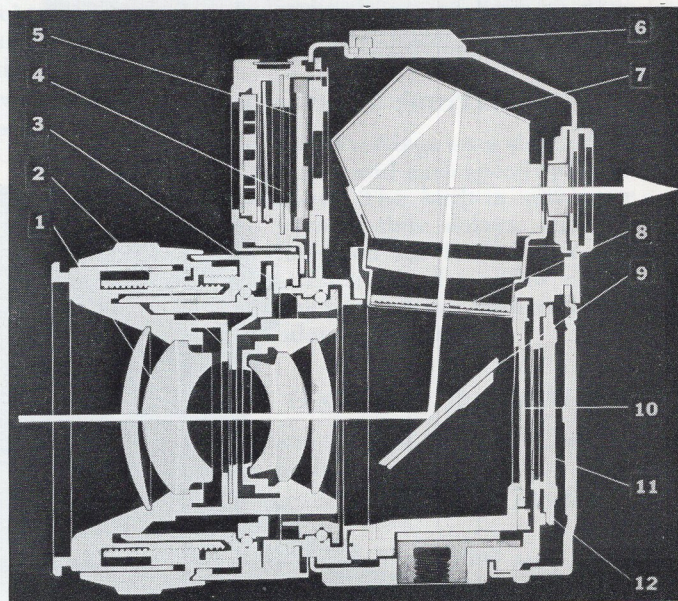


Contarex with major lenses and accessories

The Contarex camera is designed for the most rugged conditions, made of carefully selected materials and finished to utmost perfection. It is a piece of equipment you will admire for its workmanship and dependability. Its versatility makes it the ideal tool for the advanced and discriminating photographer. With a complete set of lenses, you cover anything from 90 degree wide-angle pictures to amazing telephoto shots. Photomicrography, macro photography and copy work can be done with a few inexpensive accessories. There are indeed numerous applications for the Contarex in medical, industrial, news, studio and sports photography.

#### The unique single-lens reflex principle

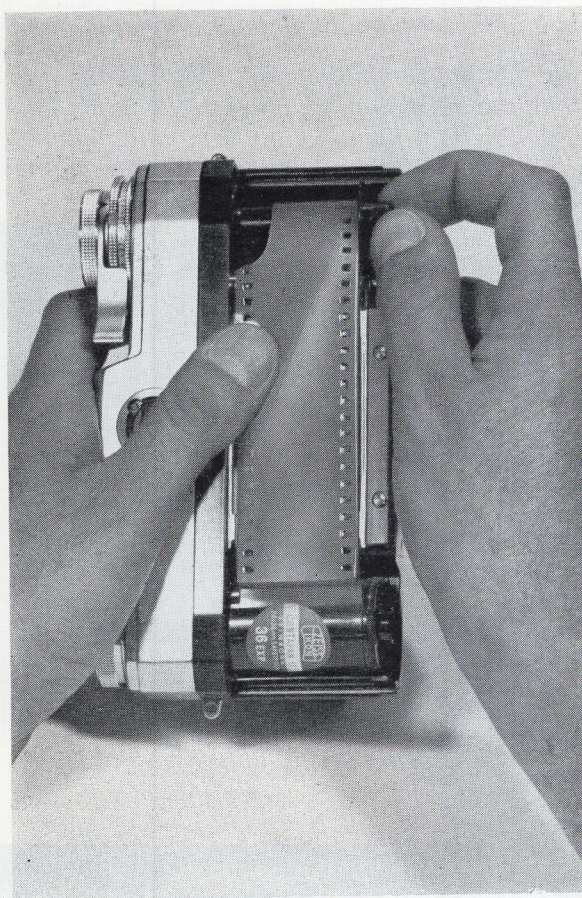
With a single-lens reflex camera you sight and focus through the camera lens, and it does not matter if it is a standard, wide-angle or telephoto lens. In addition, you can fit a supplementary close-up lens or any other attachments over the lens, and the viewfinder image will still be parallax corrected. You also retain the convenience of the built-in rangefinder, the most important advantage of the single-lens reflex camera over regular 35mm cameras. In the Contarex, this single-lens reflex principle has been brought to unsurpassed perfection.



CROSS SECTION OF CONTAREX

- |                              |   |
|------------------------------|---|
| 1. Planar f/2, 50mm lens.    | 8. Fresnel lens with ground glass ring and split-image rangefinder. |
| 2. Lens diaphragm.           | 9. Reflecting mirror.   |
| 3. Lens diaphragm coupling.  | 10. Focal plane shutter.  |
| 4. Exposure meter diaphragm. | 11. Film.   |
| 5. Photoelectric cell.       | 12. Protective capping plate.                                       |
| 6. Accessory shoe.           |   |
| 7. Penta Prism.              |   |





## THE CAMERA BODY

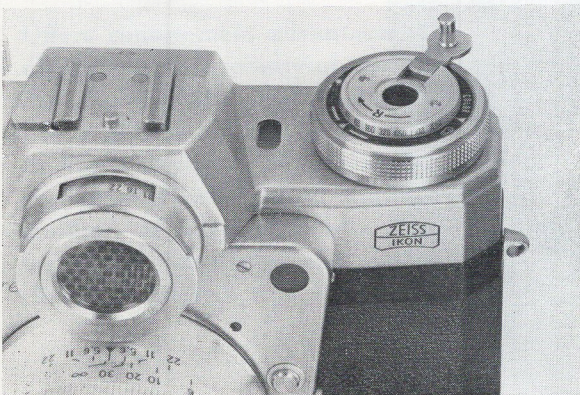
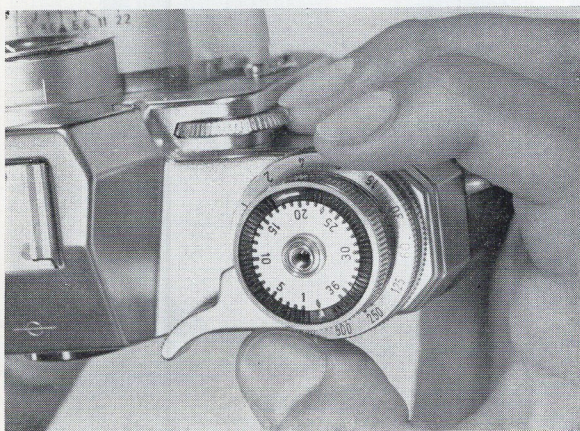
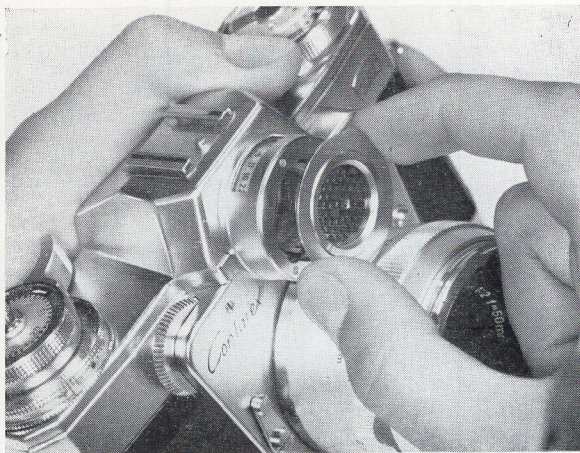
A strong, die-cast body, from a light metal alloy, makes Contarex impervious to all kinds of climatic conditions. Outside metal parts are black anodized or satin chrome finished for greater durability. The camera body is handsomely covered with fine morocco leather. For fast loading and easy cleaning, the camera back is completely removable. The Contarex without lens weighs 32 ounces and measures  $2\frac{1}{2} \times 4 \times 6$ ", a truly compact, well proportioned and perfectly balanced camera.

## VIEWFINDER AND RANGEFINDER

A large parallax-corrected eye-level viewfinder provides an extra bright natural-size image, always sharp to the edges for instantaneous compositions. You see and focus through the lens, wide open. It also features an instant-return mirror which returns to viewing position after each exposure. The Penta roof-type prism makes the subject appear upright and unreversed, which is an essential point in sports photography and various other fields. The Fresnel lens guarantees an amazing overall brightness which is a necessity for available light photography. Simultaneously with viewing the subject, you focus the lens on either the split-image field or the surrounding extra fine focusing screen. This combined view and range-finder is ideal for full-frame compositions of action shots. At the same time, you have complete control over the built-in exposure meter as the indicating needle is placed adjacent to the viewfinder image.







## EXPOSURE METER

Zeiss Ikon exposure meters have proved to be most reliable for over 25 years, and the Contarex meter is, indeed, outstanding in performance as well as in its special features. Built into the camera for protection and for greater convenience, this exposure meter couples to all interchangeable lenses with automatic preset diaphragms (35mm to 135mm). The ingenious interlock system gives the choice of pre-selecting either a shutter speed or a lens opening, and the other setting is then adjusted with the exposure meter. Most other single-lens reflex cameras do not provide this alternative, and with these designs, the shutter speed must be pre-selected at all times. The Contarex exposure meter also permits conventional shutter speed and f/stop settings for non-preset lenses (21mm and 250mm). Furthermore, the automatic interlock can be temporarily disengaged to use individual settings for deliberate under or over-exposures (green dot setting). There are provisions for reflected and incident light readings.

To increase the sensitivity of this exposure meter under poor lighting conditions, simply remove the light baffle in front of the photocell, and the exposure meter will be 16x more sensitive than under ordinary conditions. This is equivalent to four full lens stops (yellow dot setting). The exposure meter can be adjusted at waist level or eye level. The indicating needle is adjacent to the viewfinder image. The 35mm and 50mm lenses automatically compensate for the natural loss of light at near distances.

## THE FOCAL PLANE SHUTTER

There are 12 shutter speed settings on a single dial, including B, 1-1/1000 sec., and each speed operates with amazing smoothness. The built-in self-timer can be adjusted to various time delays, and the shutter is fully synchronized for flash bulbs and electronic flash units. Each speed is color coded and you adjust the synchronization automatically as you select a particular shutter speed.

## COLOR CODE FOR FLASH SYNCHRONIZATION

Black speeds (X-contact) 1-1/30 sec: Class M bulbs, electronic flash units  
 Yellow speed (X-contact) 1/60 sec: Electronic flash units only  
 Red speeds (M-contact) 1/125-1/1000 sec: Focal plane (FP) flash bulbs  
 All speeds from 1-1/1000 sec. operate with the built-in self-timer for flash exposures.

## RAPID FILM ADVANCE LEVER

One stroke with this lever advances film, cocks shutter, then opens lens diaphragm for viewing.

## RAPID REWIND CRANK

A collapsible crank permits fast rewinding of 20 or 36 exposure loads into the cartridge.



## PHOTOMICROGRAPHY

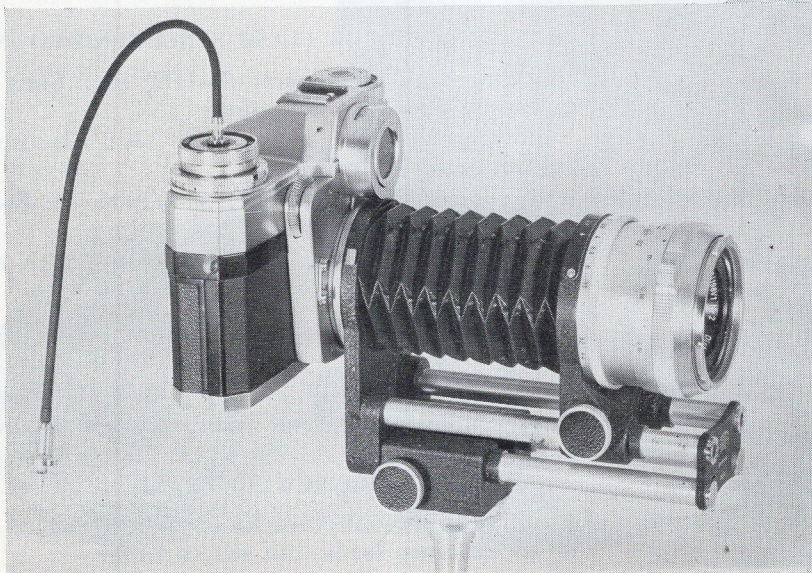
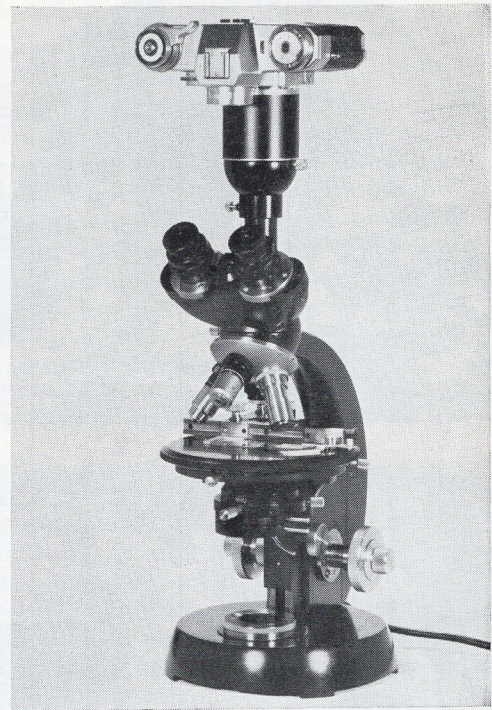
A few inexpensive adapters connect the Contarex without lens to standard microscopes with 25mm diameter eye-piece sleeve. The built-in viewfinder is parallax corrected for this purpose and the circular focusing screen indicates when the microscope is adjusted for maximum definition. As an additional accessory, we suggest the right-angle viewfinder.

## TABLE REPRODUCTION STAND

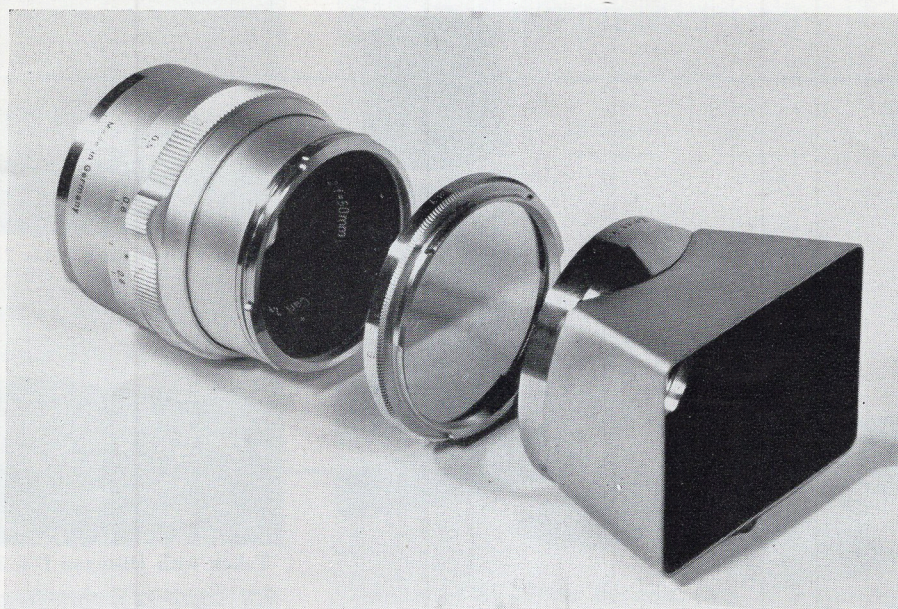
The table reproduction stand clamps to tables or drawing boards for all kinds of copy work and table-top photography. The camera can be aligned vertically and horizontally or at any intermediate position. The 24-inch pillar permits copy work of 10 x 15" documents or any smaller sizes. When copying material is larger than 10 x 15", swing the camera out and place the documents on an adjoining lower table or directly on the floor.

## FOCUSING BELLOWS ATTACHMENT

If the interchangeable Contarex lenses do not provide sufficient magnification at near distances, the focusing bellows attachment is recommended with its long bellows extension. This Contarex attachment covers minute objects in one sweep, and it is extremely flexible for medical and dental close-ups. The attachment can be used in conjunction with 35, 50, 85 and 135mm lenses. (Specifications are in price list.)

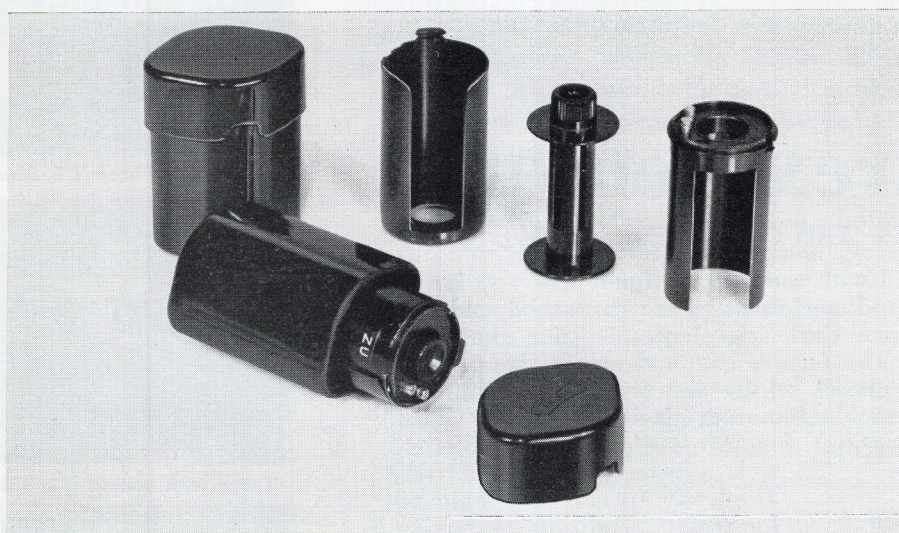






## FILTERS

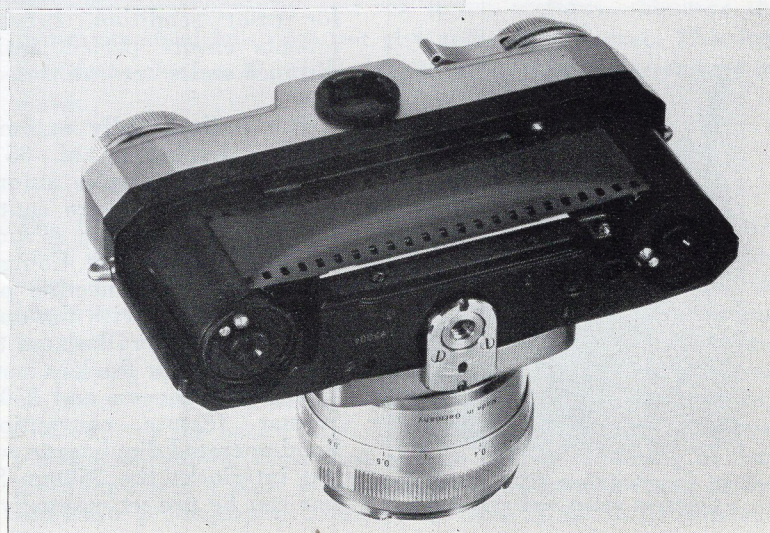
Filters and lens hoods are supplied in bayonet mounts for quick and convenient interchangeability. One size filter for all lenses from 21mm to 135mm focal length.



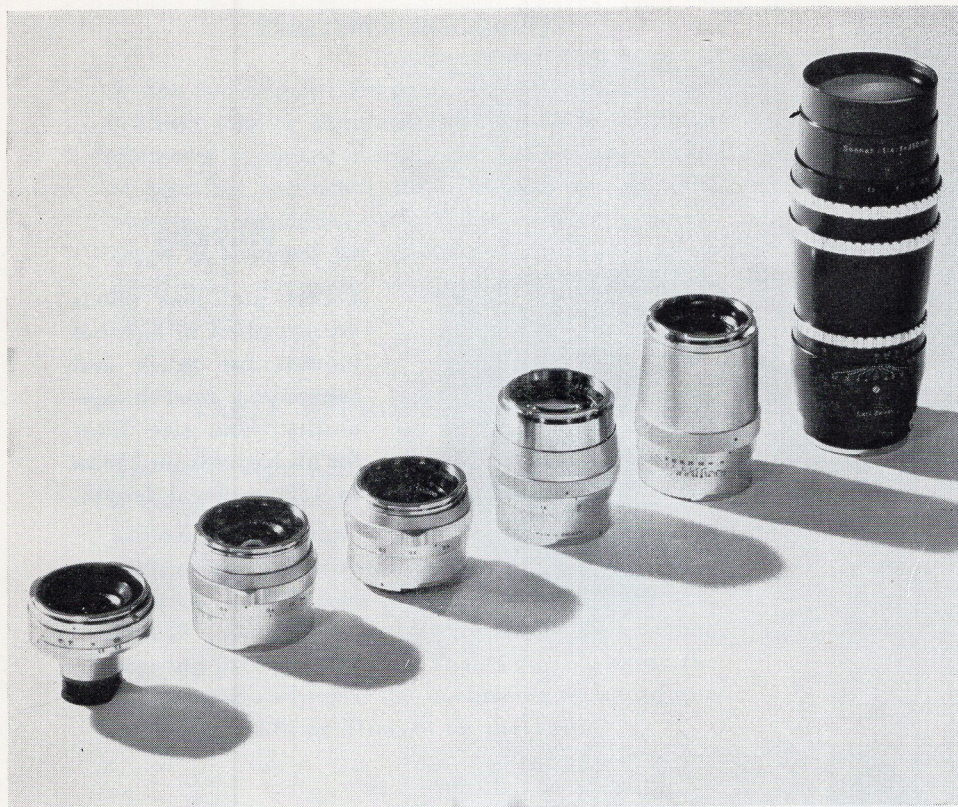
## CONTAREX CASSETTES

### Loading with two cassettes

Offers considerable advantages. It eliminates the necessity of rewinding exposed film, and partly exposed film can easily be removed in broad daylight. This facilitates exchange of one type of film for another, of black-and-white film for color, whenever such quick change is desired.







# Contarex Lenses

FOR CONTAREX AND CONTAREX SPECIAL

The Contarex is equipped with some of the finest lenses as far as workmanship, material and performance are concerned and the fact that they are genuine Carl Zeiss lenses is your guarantee of complete satisfaction. The factory cuts and grinds these lenses from carefully selected glasses which are products of constant research in the optical field. All air-to-glass surfaces are hard coated (anti-reflection coating) for increased light transmission and greater image contrast. The lenses are carefully matched for color rendition. Precision mounts ensure perfect fitting; distance scales are calibrated in feet.



Lens Carrying Case #20.7842 for three Contarex lenses and accessories.

The built-in fully automatic pre-set diaphragm of 35 to 135mm lenses couples automatically to the exposure controls of the camera as soon as such a lens is fitted to the Contarex. The necessary connecting parts cannot interfere with the operation of the camera because they are placed inside the lens mount. The 21mm Biogon and 250mm Sonnar feature conventional, hand-operated diaphragms without interlock; the 250mm Sonnar can be pre-set manually.



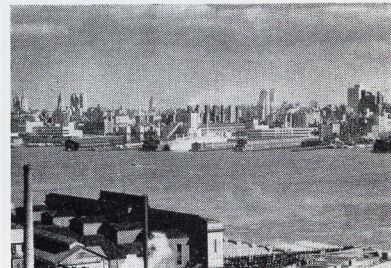
Taken with Biogon f/4.5, 21mm lens



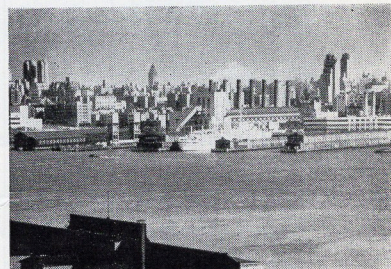
Taken with Distagon f/4, 35mm lens



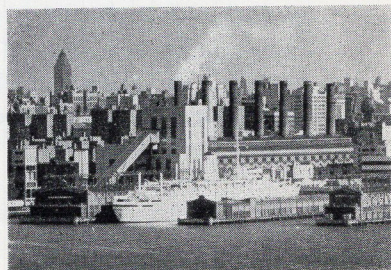
Taken with Planar f/2, 50mm lens



Taken with Sonnar f/2, 85mm lens



Taken with Sonnar f/4, 135mm lens



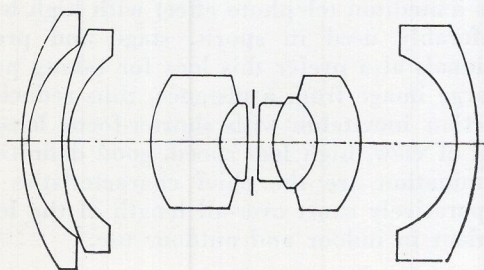
Taken with Sonnar f/4, 250mm lens



## LENS SPECIFICATIONS

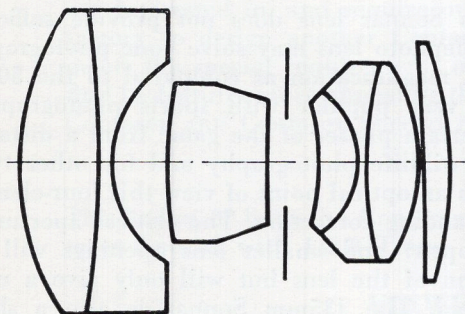
|                             | Angle of view | Elements | Smallest aperture | Closest distance | Approximate min. coverage |
|-----------------------------|---------------|----------|-------------------|------------------|---------------------------|
| Biogon f/4.5, 21mm (13/16") | 90°           | 8        | f/22              | 3 ft.            | 3' 1" x 4' 8"             |
| Distagon f/4, 35mm (1 3/8") | 63°           | 7        | f/22              | 8"               | 2 3/4" x 4"               |
| Planar f/2, 50mm (2")       | 45°           | 6        | f/22              | 12"              | 3 3/8" x 5 1/4"           |
| Tessar f/2.8, 50mm (2")     | 45°           | 4        | f/22              | 15"              | 4 1/2" x 6 3/4"           |
| Sonnar f/2, 85mm (3 3/8")   | 28°           | 7        | f/22              | 30"              | 7" x 10 1/2"              |
| Sonnar f/4, 135mm (5 3/8")  | 18°           | 4        | f/22              | 4'               | 7" x 10 1/2"              |
| Sonnar f/4, 250mm (10")     | 10°           | 4        | f/22              | 8'               | 8" x 11"                  |

## BIOGON f/4.5, 21mm



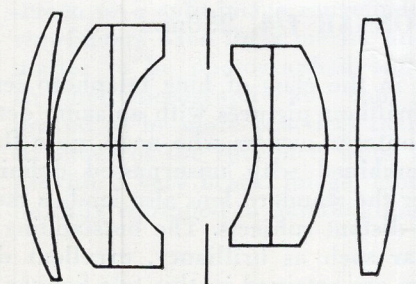
The 21mm Biogon, first 90 degree wide-angle lens in the 35mm field, is a completely new design based on a unique formula. It offers excellent definition over the entire negative area at full aperture (f/4.5), is free of distortion and provides outstanding illumination near the edges, which is a major problem with any wide-angle design. The tremendous depth-of-field (3' 6" to Infinity at f/4.5) makes it an excellent fixed-focus lens for instantaneous snapshots. It is also indispensable when photographing a large area at a comparatively short distance, for instance, charts, machines or testing equipment in small spaces. For the same reason photographers prefer the Biogon for architectural subjects and general indoor photography.

## DISTAGON f/4, 35mm



The Distagon is a universal wide-angle lens with crisp definition and excellent illumination over the entire field. It has an extremely long back focus to provide sufficient clearance for the mirror of single-lens reflex cameras. The Distagon is widely used in indoor photography and for scenic pictures whenever the 50mm standard lens does not give sufficient coverage. This lens focuses as close as 8", which is another interesting feature of its design.

## PLANAR f/2, 50mm

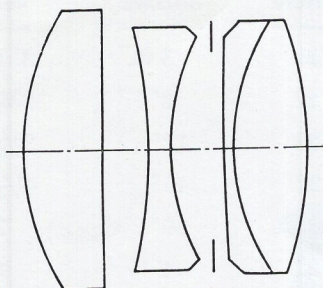


The Planar lens is based on a Carl Zeiss formula which dates back as far as the beginning of the century, and since that time it has undergone innumerable optical and mechanical improvements. Consequently the current f/2, 50mm Planar lens for the Contarex represents the ultimate in modern lens design.

Among other outstanding characteristics, the lens produces an exceptionally flat image with uniform and needle-sharp resolution over the entire field. The excellent correction of spherical and chromatic aberration and its proper rendering of contrasts, makes it a truly ideal standard lens for color and black-and-white photography. It focuses as close as 12" in its standard Contarex mount.

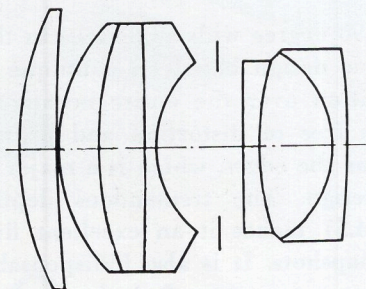


### TESSAR f/2.8, 50mm



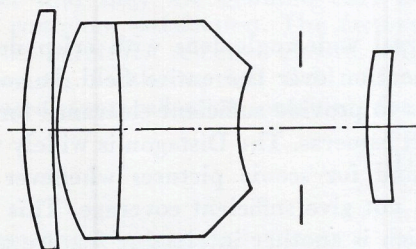
The Carl Zeiss Tessar, widely known the world over for more than 50 years, was included in the line of available Contarex lenses for several good reasons. Its needle-sharp definition and complete absence of distortion, for example, make it the ideal lens for architectural subjects, copy work of line patterns, and similar applications. Most photographers feel that the f/2.8 maximum opening provides sufficient speed with modern high-speed films. This lens is particularly recommended for the Contarex special.

### SONNAR f/2, 85mm



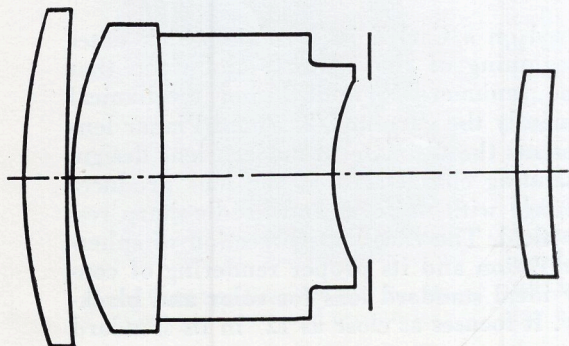
This Sonnar combines a medium telephoto effect with high lens speed and it is preferably used in sports, stage and press photography. Professionals also prefer this lens for taking portraits as it yields a large image from a distance, thus reducing the perspective distortion inevitable with shorter-focus lenses. From an optical point of view, high lens speed, good definition and outstanding illumination are the chief characteristics of this design. The comparatively short over-all length of the lens makes it very convenient in indoor and outdoor use.

### SONNAR f/4, 135mm



Whenever the 85mm Sonnar lens does not provide sufficient magnification, this telephoto lens may solve your photographic problems. With 2.7X magnification as compared to the 50mm standard lens, it is very popular with sports photographers who wish to cover certain phases of the game from a distance. It is also needed in wildlife photography and for other types of distant shots. From an optical point of view this four-element lens is of truly outstanding correction. The critical aperture is f/4.5 (almost wide open) and smaller lens openings will not increase the definition of the lens but will only give a more extended depth-of-field. The 135mm Sonnar is also a short-barrel lens, a special feature of the Sonnar type.

### SONNAR f/4, 250mm



This Sonnar belongs in the class of long telephoto lenses and produces extremely brilliant pictures with amazing detail. It is designed for those Contarex owners who need more than average magnification combined with unsurpassed definition. Its 5X magnification over the standard lens also lends a most interesting perspective to distant subjects. The outstanding features of the famous Sonnar such as brilliancy, excellent definition and even illumination are retained in this tele Sonnar lens.



# Contarex Special



*Contarex Special camera and interchangeable viewfinder components*

Although the Contarex is widely considered the most versatile 35mm camera on the market, there are certain groups of photographers, serving the professional and scientific fields, who are interested in, and require other, technical features. Their suggestions have prompted the factory to design another Contarex model which was named "Contarex Special." This model meets the special requirements of these photographers as well as amateur photographers who find its features more appealing than the regular model. There is, however, no difference between Contarex and Contarex Special regarding workmanship, material, precision and dependability.

## THE CAMERA BODY

The bodies of both the Contarex and Contarex Special are similar in basic design. The Contarex Special with f/2.8 Tessar lens weighs approximately 40 ounces.

## VIEWFINDER AND RANGEFINDER

The Contarex Special features a convertible viewfinder arrangement which permits the photographer to switch from eye-level viewing with penta prism attachment to waist-level viewing with collapsible focusing hood in seconds. He also has the choice of using a full ground-glass screen or a split-image rangefinder with circular focusing screen. Both eye-level and waist-level viewfinders have their merits, and the use of one or the other largely depends on the subject matter to be photographed and individual techniques in focusing and composing the picture. In photomicrography and copy work, the full ground-glass with waist-level viewfinder has proved to be more practical than the split-image rangefinder as it better reveals the minute structure of the specimen when focusing. Both viewfinder systems are parallax-corrected and provide a very bright image. Most photographers will discover that they need both systems to be fully equipped to handle all areas of complex technical and scientific photography.

## EXPOSURE METER

The Contarex Special is not equipped with a built-in exposure meter. We recommend the Zeiss Ikon Ikophot Rapid exposure meter for use with this camera.



## CONTAREX, CONTAREX SPECIAL INTERCHANGEABLE LENSES, ACCESSORIES

|  | catalog<br>number | PRICE  |
|--|-------------------|--------|
| CONTAREX, with Planar f/2, 50mm, case extra.....   | 10.2401           | 499.00 |
| CONTAREX, camera body only, case extra.....  | 10.2400           | 346.00 |
| Case, Eveready, for Contarex.....  | 20.7520           | 27.50  |
| CONTAREX SPECIAL, with Tessar f/2.8, 50mm, light hood attachment and full ground-glass insert, case extra..... | 10.2599           | 394.00 |
| CONTAREX SPECIAL, with Planar f/2, 50mm, light hood attachment and full ground-glass insert, case extra.....   | 10.2598           | 475.00 |
| CONTAREX SPECIAL, camera body only,† without view-finder components, case extra.....                           | 10.2500           | 288.00 |
| Case, Eveready, for Contarex Special.....  | 20.7520           | 27.50  |

†When ordering, please specify desired view-finder attachment and insert.

OPTIONAL VIEWFINDER COMPONENTS  
FOR CONTAREX SPECIAL:

|  |         |       |
|--|---------|-------|
| *Light hood attachment, collapsible, in case.....                      | 20.1561 | 26.00 |
| *Full ground-glass insert, in case.....                                | 20.1563 | 13.50 |
| Penta prism attachment, in case.....                                   | 20.1560 | 36.00 |
| Split-image rangefinder insert for 35mm to 135mm lenses, in case.....  | 20.1564 | 20.00 |
| Split-image rangefinder insert for 250mm lens, in case.....            | 20.1565 | 20.00 |
| Leather case for ground-glass or split-image rangefinder insert.....   | 20.7857 | 2.75  |
| Leather case for collapsible light hood or penta prism attachment..... | 20.7858 | 2.75  |

\*These items are included in the price of a complete Contarex Special with lens, except for the cases No. 20.7857 and No. 20.7858.

## INTERCHANGEABLE LENSES and LENS ACCESSORIES

|  |         |        |
|--|---------|--------|
| BIOGON f/4.5, 21mm.....  | 11.2402 | 229.00 |
| DISTAGON f/4, 35mm, automatic preset.....  | 11.2403 | 153.00 |
| PLANAR f/2, 50mm, automatic preset.....  | 11.2401 | 153.00 |
| TESSAR f/2.8, 50mm, automatic preset.....  | 11.2501 | 71.00  |
| SONNAR f/2, 85mm, automatic preset.....  | 11.2404 | 194.00 |
| SONNAR f/4, 135mm, automatic preset.....   | 11.2405 | 156.00 |
| SONNAR f/4, 250mm, manually preset, with lens shade.....   | 11.2406 | 378.00 |
| VIEWFINDER for 21mm Biogon.....  | 20.1500 | 27.00  |
| LENS CARRYING CASE for 3 Contarex lenses and accessories.....  | 20.7842 | 36.00  |
| Holds the 21mm Biogon, 135mm Sonnar and one additional lens (35mm, 50mm or 85mm) plus the 21mm viewfinder. There is space for either two 56mm filters or one filter and the Proxar close-up lens and two 56mm lens shades. |         |        |
| LENS CAP for FRONT of lens (21mm to 135mm).....  | 20.0609 | 1.00   |
| LENS CAP, rear, 35mm to 250mm lenses.....  | 20.0625 | 1.00   |
| LENS CAP, rear, 21mm lens.....   | 20.0626 | 1.00   |
| LEATHER CASES:   |         |        |
| for 21mm lens .....  | 20.7755 | 13.50  |
| for 35 and 50mm lenses .....   | 20.7756 | 10.50  |
| for 85mm lens .....  | 20.7757 | 11.50  |
| for 135mm lens .....   | 20.7758 | 11.50  |
| for 250mm lens .....   | 20.7759 | 17.00  |
| PLASTIC CONTAINERS:  |         |        |
| for 21mm lens .....  | 20.7001 | 3.00   |
| for 35mm and 50mm lenses.....  | 20.7002 | 3.00   |
| for 85mm lens .....  | 20.7008 | 3.00   |
| for 135mm lens .....   | 20.7003 | 3.00   |
| LENS SHADE, bayonet mount, 56mm for 21 and 35mm lenses.....  | 20.0710 | 6.50   |
| LENS SHADE, bayonet mount, 56mm for 50, 85 and 135mm lenses....  | 20.0712 | 6.50   |
| CASE, leather, for #20.0710 lens shade.....  | 20.7838 | 3.00   |
| CASE, leather, for #20.0712 lens shade.....  | 20.7837 | 3.00   |



MONOCULAR 8x30 B, f/16, 400mm tele attachment (for close-up lenses for Monocular see Binocular Section Page F-3).....  
CASE, leather, for Monocular.....  
ADAPTER RING to attach Monocular 8x30 B to Contarex.....  
FILTERS, BAYONET MOUNT, 56mm for 21, 35, 50, 85 and 135mm lenses:

Ultra Violet 1x }  
Yellow 2x }  
Yellow Green 3x } Zeiss Ikon Manufacture.....  
Orange 5x }  
Red 8x }  
1A Skylight for Kodachrome, Kodacolor, Ansochrome, Ektachrome, Super-Ansochrome. High Speed Ektachrome, all daylight }  
85C for Kodachrome and Ektachrome, Type F } Domestic manufacture in Zeiss Ikon Mount  
85B for Super-Ansochrome Tungsten, High Speed Ektachrome, Type B }

SCREW-IN MOUNT, 49mm, for 21\*, 35, 50, 85 and 135mm lenses:

Ultra Violet 1x }  
Yellow 2x }  
Yellow Green 2x } Zeiss Ikon Manufacture.....  
Orange 5x }  
Red 8x }

\*49mm filters should be used with the 21mm Biogon and the #20.0710 lens shade to avoid slight vignetting. Color conversion filters not available in 49mm mounts.

SCREW-IN MOUNT, 67mm for 250mm lens:

Ultra Violet 1x } Zeiss Ikon Manufacture.....  
Yellow 2x }  
1A Skylight for Kodachrome, Kodacolor, Ansochrome, Ektachrome, Super-Ansochrome. High Speed Ektachrome, all daylight }  
85C for Kodachrome and Ektachrome, Type F } Domestic manufacture in Zeiss Ikon Mount  
85B for Super-Ansochrome Tungsten, High Speed Ektachrome, Type B }

All Zeiss Ikon filters are dyed-in-the-mass, solid optical glass, plane-parallel finished to the highest degree. Mounted in chromium plated mounts. Color film conversion filters are domestically manufactured to our specifications.

CONTAPOL, polarizing filter in bayonet mount, 56mm.....

The Contapol subdues reflections on glass, water, and other non-metallic surfaces, darkens blue skies in color photography without changing subject colors. The filter factor is approx. 3X.

## CONTAREX AND CONTAREX SPECIAL ACCESSORIES FOR CLOSE-UP PHOTOGRAPHY

PROXAR CLOSE-UP LENS, bayonet mount, 56mm, 5x, f = 0.2m (for distances 4-8 in.).....

Approx. minimum coverage:  $1\frac{3}{4} \times 2\frac{1}{2}$ " }  
Approx. maximum coverage:  $3\frac{3}{8} \times 5\frac{1}{4}$ " } with 50mm lens

BELLOWS EXTENSION (double track) for 35 to 135mm lenses.....

Approx. permissible field sizes with:

35mm lens:  $\frac{1}{4} \times \frac{3}{8}$ " to  $1 \times 1\frac{1}{2}$ "

50mm lens:  $\frac{3}{8} \times \frac{3}{8}$ " to  $1\frac{3}{8} \times 2\frac{3}{8}$ "

85mm lens:  $\frac{3}{8} \times 1$ " to  $2\frac{7}{8} \times 3\frac{3}{4}$ "

135mm lens:  $1 \times 1\frac{1}{2}$ " to  $3\frac{1}{2} \times 5\frac{1}{4}$ "

TABLE REPRODUCTION STAND consisting of:

Table Clamp .....  
Pillar 2' long .....  
Connecting Arm .....  
Camera Adapter .....

LIGHTING UNIT FOR TABLE REPRODUCTION STAND:

1 T-Clamp.....  
1 Transverse Tube.....  
2 Clamps.....  
2 Tubes for carrying Reflector.....  
4 Clamps.....  
4 Reflectors with articulated tubes and U.S. adapter.....

RIGHT-ANGLE VIEWFINDER for viewing and focusing at waist-level and for copy work, photo-micrography. Mirror reflex viewfinder with adjustable eyepiece which is fitted to the eyepiece of the camera (cannot be used with Contarex Special and waist-level viewfinder).....

MICRO ATTACHMENT for 25mm Eyepiece Sleeve, consisting of:

1 Contarex Adapter .....  
1 Connecting Ring .....

| catalog number | PRICE    |
|----------------|----------|
| 20.1629        | 93.00    |
| 20.7812        | 10.50    |
| 20.1639        | 5.50     |
| 20.1012 UV     | 16.00    |
| 20.1012 G      | 16.00    |
| 20.1012 GR     | 16.00    |
| 20.1012 O      | 16.00    |
| 20.1012 R      | 16.00    |
| 20.1012-1A     | 16.00    |
| 20.1012-85C    | 16.00    |
| 20.1012-85B    | 16.00    |
| 20.1007 UV     | 11.00    |
| 20.1007 G      | 11.00    |
| 20.1007 GR     | 11.00    |
| 20.1007 O      | 11.00    |
| 20.1007 R      | 11.00    |
| 20.1017 UV     | 24.00    |
| 20.1017 G      | 24.00    |
| 20.1017-1A     | 24.00    |
| 20.1017-85C    | 24.00    |
| 23.1017-85B    | 24.00    |
| 20.1206        | 24.00    |
| 20.0840        | 12.50    |
| 20.1617        | 88.00    |
| 20.1826        | 11.50    |
| 20.1819        | 11.50    |
| 20.1828        | 12.50    |
| 20.1824        | 12.50    |
| 20.1810        | 10.00    |
| 20.1820        | 8.50     |
| 20.1811        | ea. 7.50 |
| 20.1808        | ea. 3.00 |
| 20.1812        | ea. 7.50 |
| 20.1813        | ea. 9.50 |
| 20.1634        | 21.00    |
| 20.1628        | 9.50     |
| 20.1616        | 12.50    |



## SUNDRY ACCESSORIES FOR CONTAREX AND CONTAREX SPECIAL

|   | catalog<br>number | PRICE |
|---|-------------------|-------|
| CABLE RELEASE, locking, 10-in. long, with special locking device<br>for long time exposure.....   | 20.0281 . . . . . | 1.60  |
| TAKE-UP SPOOL, made of plastic, with tooth for anchoring film.....  | 20.0001 . . . . . | .50   |
| NECK STRAP, black leather, adjustable to a length of 29-in. Equip-<br>ped with locking device.....  | 20.0211 . . . . . | 1.95  |
| EYE-CORRECTION LENS (spherical only) from $\pm 1$ to $\pm 5$ diopters<br>in steps of 0.5 diopters each, for Contarex and Contarex Special<br>with penta prism viewfinder attachment, special order only<br>together with prescription for eye used.....   | 20.0504 . . . . . | 3.00  |
| CASSETTE, complete .....  | 20.0300 . . . . . | 7.50  |
| CORE, Cassette .....  | 20.0301 . . . . . | .50   |
| For using "Bulk" film. By using a cassette at each end, films may<br>be interchanged with a minimum loss and film need not be re-<br>wound before unloading. This cassette is also used in the Contax<br>and Contaflex cameras. Complete cassette furnished in container<br>and with core (spool). Core supplied separately for replacement;<br>it is not identical with take-up spool. |                   |       |
| IKOBLITZ 4, BC flash unit for bayonet base flash bulbs #5, with<br>folding reflector, removable adapter for M5 and M25 bulbs. For<br>15-volt BC battery (battery not included).....   | 20.2214 . . . . . | 9.95  |
| IKOPHOT RAPID photo-electric exposure meter complying with ASA<br>specifications and calibrated for both linear shutter and cine<br>speeds, with light values, for reflected and incident light readings,<br>small compact design for instant one-hand operation, complete<br>with metal safety chain and leather case.....   | 20.2402 . . . . . | 19.95 |
| CONTAREX SYSTEM CASE, empty, holding Contarex or Contarex<br>Special with eveready case, all interchangeable lenses (21mm to<br>250mm). Bellows Extension attachment, Micro attachment, 2<br>filters, Contapol, Proxar and minor accessories.....   | 20.7883 . . . . . | 58.00 |
| BOOK: The Contarex Guide by W. D. Emanuel (95 pages).....   | — . . . . .       | 1.95  |



The Contarex System Case, filled



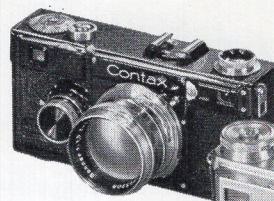


# **ACCESSORIES FOR** **CONTAX IIa, IIIa CAMERAS** **35mm**

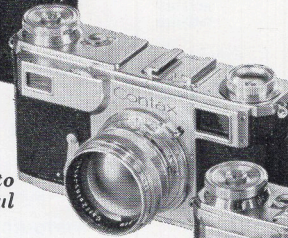


# CONTAX

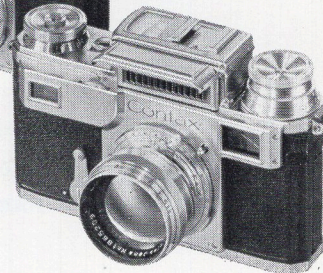
## IIa and IIIa



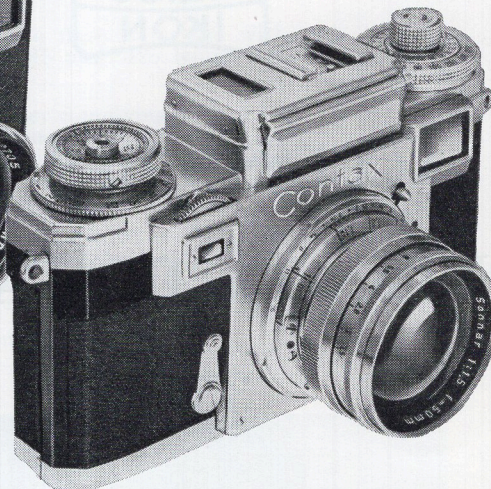
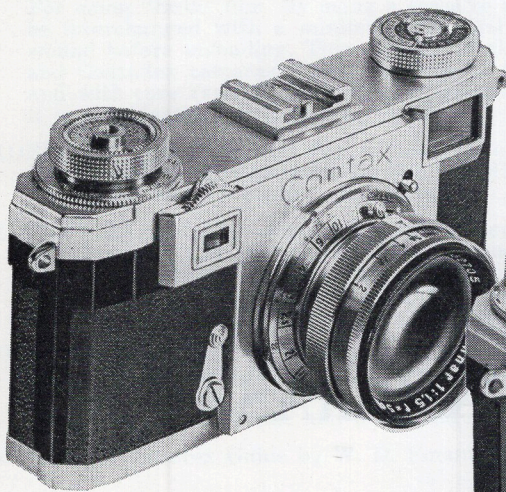
**1932 Model**  
*CONTAX I—first 35mm. camera with built-in coupled range-finder.*



**1936 Model**  
*CONTAX II—successor to the Model I—so successful the world over.*



**1936 Model**  
*CONTAX III—like CONTAX II, but with built-in photo-electric exposure meter.*



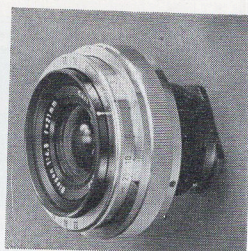
**1950-1961 Models**  
*CONTAX IIa and IIIa cameras reflect the optical and mechanical refinement of nearly a century of manufacturing skill.*

CONTAX cameras are now discontinued but, for the benefit of owners, we are still offering a limited stock in lenses and accessories subject to prior sale. Do not delay ordering necessary lenses and accessories.

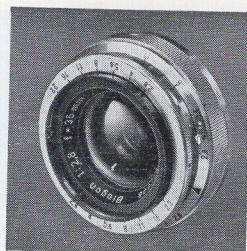
### CONTAX LENSES SPECIFICATIONS

| Lens   | Angle of View | Elements | Smallest Aperture | Closest Distance    | Approx. Min. Coverage |
|--|---------------|----------|-------------------|---------------------|-----------------------|
| Biogon f/4.5 21mm. (1 $\frac{3}{16}$ " )         | 90°           | 8        | f/22              | 3 ft.               | 3'1"x4'8"             |
| Biogon f/2.8 35mm. (1 $\frac{1}{8}$ " )          | 63°           | 7        | f/22              | 3 ft.               | 1'11"x2'10"           |
| Tessar f/3.5 50mm. (2" )                         | 45°           | 4        | f/22              | 3 ft.               | 1'3"x1'10"            |
| Sonnar f/2 50mm. (2" )                           | 45°           | 6        | f/22              | 3 ft.               | 1'3"x1'10"            |
| Sonnar f/1.5 50mm. (2" )                         | 45°           | 7        | f/16              | 3 ft.               | 1'3"x1'10"            |
| Triotar f/4 85mm. (3 $\frac{3}{8}$ " )           | 28°           | 3        | f/22              | 3 $\frac{1}{2}$ ft. | 0'11"x1'5"            |
| Sonnar f/2 85mm. (3 $\frac{3}{8}$ " )            | 28°           | 7        | f/22              | 3 $\frac{1}{2}$ ft. | 0'11"x1'5"            |
| Panflex Tessar f/3.5 115mm. (4 $\frac{1}{2}$ " ) | 21°           | 4        | f/22              | 3'9"                | 0'7"x0'11"            |
| Sonnar f/4 135mm. (5 $\frac{1}{8}$ " )           | 18°           | 4        | f/22              | 5 ft.               | 0'9"x1'1"             |





Biogon 21mm. f/4.5



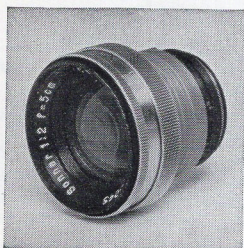
Biogon 35mm. f/2.8



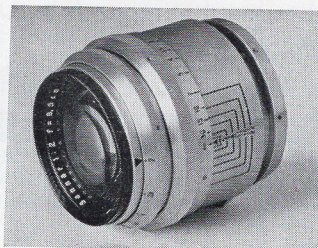
Tessar 50mm. f/3.5



Sonnar 50mm. f/1.5



Sonnar 50mm. f/2



Sonnar 85mm. f/2



Sonnar 135mm. f/4

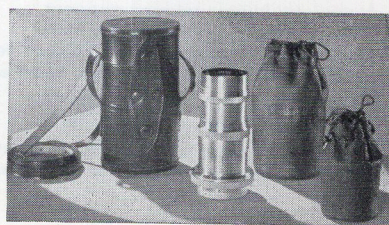
### LENSES IN BAYONET MOUNT FOR CONTAX IIa and IIIa

|  | catalog number                                   | PRICE   |
|--|--|---------|
| BIOGON f/4.5, 21mm. ....   | 11.1804  | 219.000 |
| BIOGON f/2.8, 35mm. ....   | 11.1806  | 174.00  |
| TESSAR f/3.5, 50mm. ....   | 11.1801  | 71.00   |
| SONNAR f/2, 50mm. ....   | 11.1802  | 125.00  |
| SONNAR f/1.5, 50mm. ....   | 11.1803  | 146.00  |
| TRIOTAR f/4, 85mm. ....  | 11.1807  | 111.00  |
| SONNAR f/2, 85mm. ....   | 11.1808  | 188.00  |
| SONNAR f/4, 135mm. ....  | 11.1809  | 153.00  |
| PANFLEX TESSAR f/3.5, 115mm., with automatic pre-set diaphragm, incl. special cable release to be used only in conjunction with the Panflex reflex housing | 11.1815 }<br>20.0280 }                           | 188.00  |
| LENS CAPS for FRONT of lenses:   |  |         |
| for 50mm. lenses, 85mm. Triotar and 135mm. Sonnar....  | 20.0622  | 1.00    |
| for all wide-angle lenses  | 20.0611  | 1.00    |
| for Sonnar 85mm. ....  | 20.0619  | 1.00    |
| LENS CAPS for REAR of lenses:  |  |         |
| for all wide-angle lenses  | 20.0618  | 1.00    |
| for 50mm. lenses only  | 20.0600  | 1.00    |
| for all 85mm. and 135mm. lenses  | 20.0610  | 1.00    |
| EVEREADY CASE, brown leather, cowhide, velvet lined, metal reinforcements, chrome trimmed, closes with 50mm. or 35mm. lens on camera, for IIa and IIIa     | 20.7500  | 19.00   |
| UNIVERSAL CASE, brown leather, cowhide, outside dimensions 4"x7"x9" with compartments for:   | 20.7950  | 47.00   |
| 1 CONTAX IIa or IIIa with 50mm. lens   | 4 Contax cassettes                               |         |
| 1 Sonnar 85mm. or 135mm. lens  | 2 filters  |         |
| 1 wide-angle lens  | 1 Ikophot exposure meter or 2 additional filters |         |
| 2 lens shades  | 2 view-finders                                   |         |
|  | other small accessories                          |         |
| SOFT POUCH CASES, with draw-string:  |  |         |
| For 50mm. lenses   | 20.7701  | 2.50    |
| For Sonnar 85mm. lens  | 20.7702  | 3.50    |
| For Triotar 85mm. and Sonnar 135mm. lenses   | 20.7703  | 3.50    |
| For Biogon 21mm., 35mm. lenses   | 20.7700  | 3.50    |
| LEATHER CASES:   |  |         |
| For Sonnar 85mm. lens  | 20.7750  | 10.50   |
| For Triotar 85mm. and Sonnar 135mm. lenses   | 20.7751  | 10.50   |
| For Biogon 21mm., 35mm. lenses   | 20.7754  | 9.00    |

These leather cases for Contax lenses are made of cowhide, and are velvet-lined. A separate space for one filter and lens shade is provided. Each case is furnished with carrying strap.

Eveready Carrying Case  
for Contax

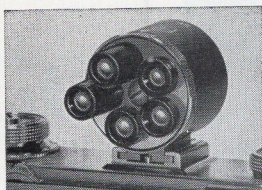
CAM-891-a (4614)



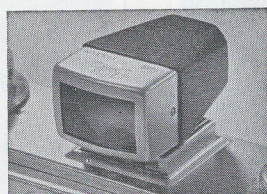
Hard and soft lens cases

Universal  
Carrying Case

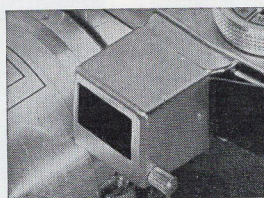




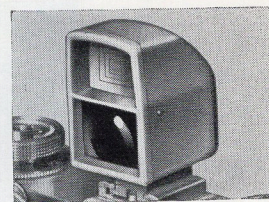
Universal turret type view-finder for 21, 35, 50, 85 and 135mm lenses.



Wide-angle view-finder for 35mm lens.



Finder attachment with parallax control for 85 and 135mm lenses.



Universal view-finder with luminous frames for 35, 50, 85 and 135mm lenses.

## VIEW-FINDERS

|   | catalog number | PRICE  |
|---|----------------|--------|
| UNIVERSAL turret type view-finder for 21, 35, 50, 85, 135mm. lenses, in leather case.....   | 20.1502        | 105.00 |
| The Universal View-Finder is of the revolving (turret) type, and slides into the accessory shoe of the Contax. It is adjustable for parallax compensation and shows the fields covered accurately and sharp to the edges. The field remains the same regardless of the focal length lens used. Built-in eye correction. |                |        |
| UNIVERSAL view-finder with luminous frames for 35, 50, 85, 135mm. lenses and stereo field, parallax adjustment, eyepiece threaded for eye-correction lens #20.0502, in leather case.....  | 20.1503        | 25.00  |
| Parallax correction ranges:<br>. = 3 to 6 ft., : = 6 to 13 ft., oo = 13 ft. to Infinity.  |                |        |
| WIDE-ANGLE view-finder for Biogon 21mm. lens.....   | 20.1500        | 27.00  |
| WIDE-ANGLE view-finder for Biogon and Planar 35mm. lenses.....  | 20.1501        | 8.50   |
| These clear glass optical finders slip into the accessory shoe of the Contax  |                |        |
| ATTACHMENT view-finder for 85 and 135mm. lenses.....  | 20.1504        | 13.50  |
| This finder slips over the view-finder window and eye-piece of the Contax, reducing the finder field for 85mm. and 135mm. lenses by means of metal masks, adjustable for parallax correction. CANNOT BE USED ON PRE-WAR CONTAX CAMERAS!   |                |        |

## LENS SHADES AND CASES

|   |         |      |
|---|---------|------|
| Screw-on mount, 40.5mm., for Sonnar and Tessar 50mm. lenses.....    | 20.0706 | 1.95 |
| Slip-on mount, 42mm., for Sonnar and Tessar 50mm. lenses.....       | 20.0711 | 1.95 |
| Screw-on mount, 49mm., for Sonnar 85mm. lens.....                   | 20.0707 | 1.95 |
| Screw-on mount, 40.5mm., for Sonnar 135mm. and Triotar 85mm. lenses | 20.0705 | 1.95 |
| Leather case for any of the above lens shades.....                  | 20.7820 | 2.50 |

The lens shades for Contax are made of a light-weight alloy material, precision turned to assure secure, accurate fit over lenses. The leather cases can be secured to the shoulder strap of the camera Eveready case for convenience.

## FILTERS

|  |             |       |
|--|-------------|-------|
| Screw-on mount, 40.5mm., for 21, 35, 50, 135 and Triotar 85mm. lenses and focusing head:                               |             |       |
| Ultra Violet 1x  | 20.1006-UV  | 6.50  |
| Yellow 2x  | 20.1006-G   | 6.50  |
| Yellow Green 2x  | 20.1006-GR  | 6.50  |
| Orange 5x  | 20.1006-O   | 6.50  |
| Red 8x   | 20.1006-R   | 6.50  |
| 1A Skylight for Kodachrome, Kodacolor, Anscochrome, Ektachrome, Super Anscochrome, High Speed Ektachrome, all daylight | 20.1006-1A  | 7.50  |
| 85C for Kodachrome & Ektachrome, Type F  | 20.1006-85C | 7.50  |
| 85B for Super Anscochrome-Tungsten and High Speed Ektachrome, Type B   | 20.1006-85B | 7.50  |
| 85 for Kodachrome Type A professional film   | 20.1006-85  | 7.50  |
| Screw-on mount, 49mm., for Sonnar 85mm. lens and Panflex Tessar 115mm.:  |             |       |
| Ultra Violet 1x  | 20.1007-UV  | 11.00 |
| Yellow 2x  | 20.1007-G   | 11.00 |
| Yellow Green 2x  | 20.1007-GR  | 11.00 |
| Orange 5x  | 20.1007-O   | 11.00 |
| Red 8x   | 20.1007-R   | 11.00 |

All Zeiss Ikon filters are dyed-in-the-mass, solid optical glass, plane-parallel finished to the highest degree. Mounted in metal screw-on or slip-on mounts and furnished in clear plastic boxes. Color film conversion filters are domestically manufactured to our specifications.

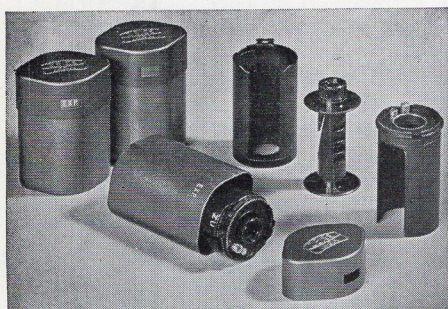
|   |         |       |
|---|---------|-------|
| POLARIZING FILTER, BERNOTAR, for lenses 42mm. outside diam. | 20.1204 | 17.50 |
| POLARIZING FILTER, BERNOTAR, for lenses 51mm. outside diam. | 20.1205 | 22.00 |

The Bernotars subdue reflections in glass, water and other non-metallic surfaces, darken blue skies in color photography, but have no influence upon color correction in natural color photography. The filter factor is approx. 3x.



## SUNDRY ACCESSORIES

|  | catalog<br>number | PRICE |
|--|-------------------|-------|
| CABLE RELEASE, locking .....<br>10-in. long, with special locking device for long time exposure.   | 20.0281           | 1.60  |
| DUST CAP for Contax without lens.....<br>A protective cover for the opening of the camera when lens is removed.<br>Slips over outer bayonet mounting. Made of alloy metal.   | 20.0601           | 1.00  |
| TAKE-UP SPOOL for Contax.....<br>Made of plastic, with tooth for anchoring film. No special cutting of film<br>required.   | 20.0001           | .50   |
| NECK STRAP for Contax.....<br>Black leather, adjustable to a length of 29-in. Equipped with swivel<br>locking hooks.   | 20.0211           | 1.95  |
| EYE-CORRECTION EYE-PIECE for view-finder without lens.....   | —                 | 1.80  |
| EYE-CORRECTION LENS (spherical only) in screw-on mount<br>from $\pm 0.5$ to $\pm 5$ diopters in steps of 0.5 diopters each, for<br>Contax, Contameter and Universal view-finder (special order only<br>together with prescription for eye used)..... | 20.0502           | 5.00  |
| CASSETTE for Contax, complete.....   | 20.0300           | 7.50  |
| CORE for Contax Cassette.....  | 20.0301           | .50   |



For using "bulk" film. By using a cassette at each end, films may be interchanged with a minimum loss and film need not be re-wound before unloading. This cassette is also used in the Contaflex cameras. Complete cassette furnished in container and with core (spool). Core supplied separately for replacement; it is not identical with take-up spool.

Contax Film Cassettes

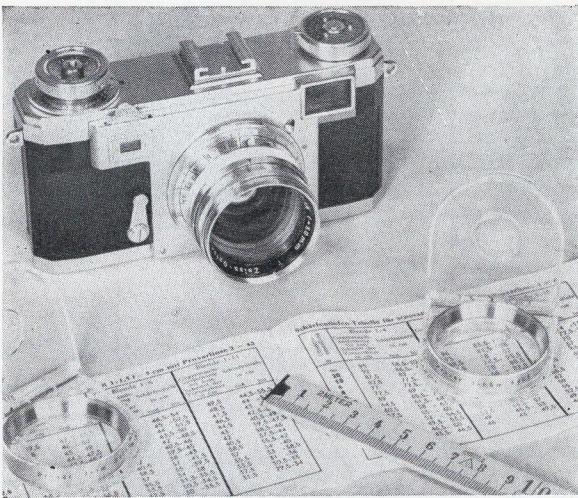
|  |         |       |
|--|---------|-------|
| IKOPHOT RAPID photo-electric exposure meter in leather case with<br>metal safety chain, for use with CONTAX IIa..... | 20.2402 | 19.95 |
|--|---------|-------|

Calibrated in accordance with ASA standards, with both linear and cine shutter speeds, light values, reflected and incident light readings. Direct readings (no calculations required), instant one-hand operation, small, compact size:  $\frac{3}{4}$ " x  $2\frac{1}{4}$ " x 3"; weight  $4\frac{1}{2}$  ozs.

Ikophot Rapid  
exposure meter

|  |         |      |
|--|---------|------|
| FLASH CORD, 4", with angular plug, for fully synchronized Contax<br>models .....<br>This cord attaches to all cords with standard European "PC" fitting.                     | 20.2210 | 1.40 |
| IKOBLITZ 4, BC flash unit for bayonet base #5 flash bulbs, with<br>folding reflector, removable adapter for M 5 and M25 bulbs.<br>For 15-volt BC battery (not included)..... | 20.2214 | 9.95 |
| BOOK: The Contax Way by H. Freytag, 280 pages.....   | —       | 4.50 |





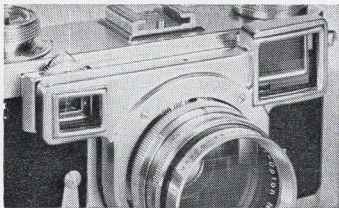
Proxar close-up lenses are easy to use

CONTAX ACCESSORIES FOR CLOSE-UP PHOTOGRAPHY

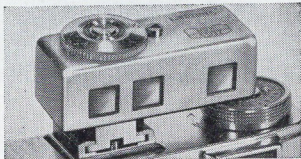
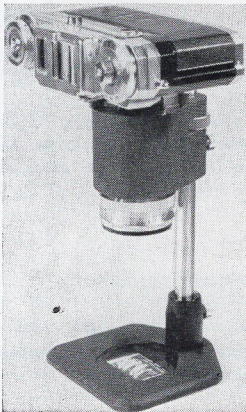
PROXAR CLOSE-UP LENSES, screw-on mount, 40.5mm., for all new style 50mm. lenses:  
1x, f = 1m (for distances 40 to 21 in.).....  
2x, f = 0.5m (for distances 20 to 12 in.).....

| catalog number | PRICE |
|----------------|-------|
| 20.0826        | 6.00  |
| 20.0827        | 6.00  |

Single Proxar close-up supplementary lenses to be used with chart furnished with each lens.  
1x approx. minimum coverage: 7 1/4" x 11" — Max. coverage: 1'6" x 2'3 1/2"  
2x approx. minimum coverage: 5 3/4" x 8 1/2" — Max. coverage: 9 1/2" x 1'2"



Contatest shown in use on a Contax IIa



Contameter on Contax IIa

Contakop copying device

CONTATEST, close-up focusing device, (range 40" to 20") in case.....  
A near focusing device, parallax-free viewing, continuous focusing from 20" to 40", attaches to outer bayonet mount of Contax IIa and IIIa body. Cannot be used with pre-war Contax models. Proxar 1x (#20.0826) furnished with Contatest. Approx. Max. coverage: 1'6" x 2'3 1/2". Min. Coverage: 7 1/4" x 11".

|         |       |
|---------|-------|
| 20.1601 | 30.50 |
|---------|-------|

CONTAMETER close-up focusing and viewing device, parallax compensation adjustment, complete with three lenses (for distances 8, 12, and 20 in.), screw-on mounts, 40.5mm., for 50mm. lenses, complete in case.....  
Equally suitable for Contax II, IIa and IIIa. Ideal for instantaneous close-ups hand-held at distances 8, 12 and 20 inches.

|         |       |
|---------|-------|
| 20.1602 | 85.00 |
|---------|-------|

| Approx. Coverage  | Distance | Reduction |
|-------------------|----------|-----------|
| 3 3/4" x 5 5/8"   | 8"       | 1:4       |
| 6" x 8"           | 12"      | 1:6.5     |
| 9 1/2" x 1'2 1/8" | 20"      | 1:10      |

SPECIAL COPYING DEVICE 1:1 "CONTAKOP".....  
Ideal set-up for copying color slides or negatives 1" x 1 1/2" (24x36), for photographing stamps, finger prints, textiles, coins, other small objects. Once the CONTAKOP is adjusted to a particular lens, it operates as a fix-focus unit. Correct framing insured by sturdy metal frame. Adapter holds any 50mm. CONTAX lens and CONTAX. Exposure factor 4x.

|         |       |
|---------|-------|
| 20.1603 | 42.00 |
|---------|-------|



CONTAPROX I close-up focusing device for use with tripod or Zeiss Ikon reproduction stands.....

Contaprox I consists of the following items:

|   |         |       |
|---|---------|-------|
| Focusing Head with built-in TESSAR f/3.5, 50mm. lens..... | 11.1814 | 92.00 |
| Ground Glass adapter.....                                 | 20.1608 | 7.50  |
| Focusing Magnifier, straight.....                         | 20.1610 | 13.50 |
| Extension Tube 1x.....                                    | 20.1816 | 12.50 |

Focusing head with helical mount focusing from 9" to Infinity, critical focusing on ground-glass with 5x magnifier; ground-glass adapter and Contax body conveniently interchangeable by means of standard bayonet mount.

| Extension Tube | Object Size                            | Ratio of Reproduction |
|----------------|--|-----------------------|
| —              | 1 $\frac{5}{8}$ " x 2 $\frac{7}{16}$ " | 1:1.8 reduction       |
| 1x             | 1 $\frac{3}{16}$ " x $\frac{7}{32}$ "  | 1:1.1 magnification   |

TABLE REPRODUCTION STAND, consisting of:

|   |         |       |
|---|---------|-------|
| Table Clamp.....                                | 20.1826 | 11.50 |
| Pillar, 24 in. high.....                        | 20.1819 | 11.50 |
| Connecting Arm.....                             | 20.1828 | 12.50 |
| Holding Bracket for Focusing Head or Helix..... | 20.1804 | 13.50 |

LIGHTING UNIT FOR TABLE REPRODUCTION STAND, consisting of:

|   |         |          |
|---|---------|----------|
| 1 T-Clamp.....  | 20.1810 | 10.00    |
| 1 Transverse Tube.....                                    | 20.1820 | 8.50     |
| 2 Lamps.....  | 20.1811 | ea. 7.50 |
| 2 Tubes for carrying Reflector.....                       | 20.1808 | ea. 3.00 |
| 4 Clamps.....   | 20.1812 | ea. 7.50 |
| 4 Reflectors with articulated tubes and U.S. Adapter..... | 20.1813 | ea. 9.50 |

FOCUSING MAGNIFIER, angular, for Contaprox.....

The Angular Focusing Magnifier may be used in place of the straight type #20.1610.

PANFLEX mirror reflex attachment without lens. It can be used with Panflex Tessar 115mm. from 3'9" to Infinity and with Contax 85mm. and 135mm. lenses only for close-ups. See charts under Panflex Tessar. Panflex especially suitable for medical and dental photography.....

PANFLEX TESSAR f/3.5, 115mm., with automatic pre-set diaphragm, with special cable release.....

The Panflex Attachment with Panflex Tessar f/3.5, 115mm. (4 $\frac{1}{2}$ ") lens focuses from 3'9" to Infinity. For close-ups Extension Tube 1x may be used.

| Extension Tube | Lens Setting | Object Size                             | Ratio of Reproduction |
|----------------|--------------|---|-----------------------|
| —              | 3'9"         | 7" x 11"                                | 1:7.9 reduction       |
| 1x             | oo           | 2 $\frac{13}{32}$ " x 3 $\frac{5}{8}$ " | 1:3.98 "              |

PANFLEX WITH SONNAR f/2, 85mm. or TRIOTAR f/4, 85mm.

|    |    |                                       |                       |
|----|----|---------------------------------------|-----------------------|
| —  | oo | 1 $\frac{1}{4}$ " x 1 $\frac{3}{4}$ " | 1:1.2 reduction       |
| 1x | oo | $\frac{3}{4}$ " x 1 $\frac{1}{4}$ "   | 1:1.5:1 magnification |

PANFLEX WITH SONNAR f/4, 135mm.

|    |    |                                       |               |
|----|----|---------------------------------------|---------------|
| —  | oo | 1 $\frac{3}{4}$ " x 2 $\frac{3}{4}$ " | 1:2 reduction |
| 1x | oo | 1 $\frac{1}{4}$ " x 2"                | 1:1.4 "       |

Request additional charts and any other information desired.

catalog  
number

PRICE



*The Panflex reflex attachment with Panflex Tessar and Contax*



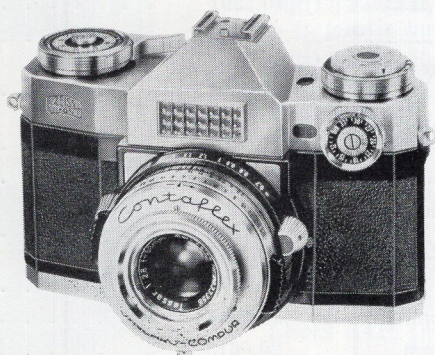


# CONTAFLEX PRIMA, SUPER CAMERAS AND ACCESSORIES 35mm

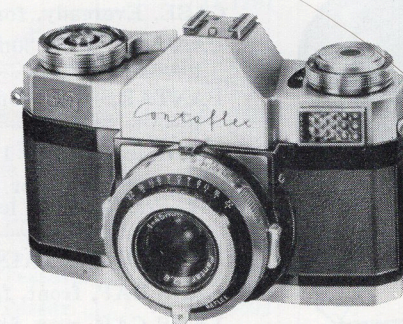


# CONTAFLEX

prima and super 35mm



*Contaflex super*



*Contaflex prima*

The Contaflex cameras are 35mm single lens reflex cameras of sturdy construction and unique design. The camera body is die-cast from a light metal alloy and covered with black morocco leather. Other outside metal parts are either black anodized or satin chrome finished for greater durability. The camera measures  $5 \times 3\frac{1}{2} \times 2\frac{3}{4}$ " and weighs 26 to 30 ozs. depending on the model. These proportions give the Contaflex an extremely compact design. The optical elements are manufactured and installed with utmost precision and the Contaflex has proven to be extremely dependable in all parts of the world.

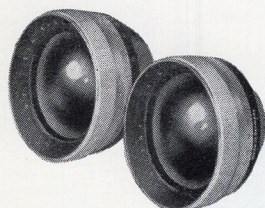
## SPECIAL FEATURES

1. Interchangeable front elements in sturdy bayonet mounts.
2. Built-in between-the-lens shutter with full flash synchronization (MXV). Shutter blades are permanently protected by rear elements.
3. Extra bright eye-level viewfinder with upright and unreversed image.
4. Penta Roof Prism incorporates both split-image rangefinder and extra fine focusing screening; automatic pre-set lens diaphragm and automatic frame counter.
5. Lenses factory coated (anti-reflection coating).
6. The Contaflex uses standard 35mm cartridges or bulk 36 exposure loads. Negative size:  $1 \times 1\frac{1}{2}$ " (24x36mm.)
7. Current models feature built-in photo-electric exposure meters complying with ASA specification and coupled to the diaphragm.
8. All current models are equipped with rapid-wind lever for quick sequence shots.

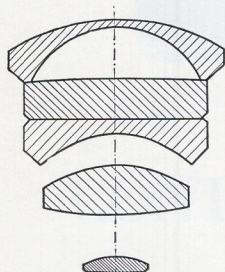


# Contaflex prima System

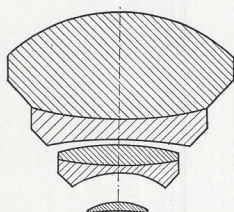
(Accessories Also for Alpha and Beta Models)



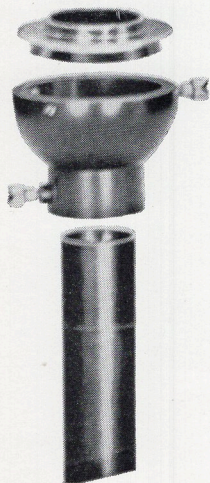
*Pantar f/4 30mm and  
Pantar f/4 75mm*



*Pantar f/4 30mm*



*Pantar f/4 75mm*



*Micro attachment for Contaflex  
alpha, beta, prima, III, IV,  
rapid and super*

CONTAFLEX prima, convertible Pantar, f/2.8, 45mm., Prontor Reflex with self-timer, built-in photo-electric exposure meter coupled to the diaphragm, case extra.....

CASE, Eveready, for Contaflex prima.....

PANTAR, f/4, 30mm., 60mm. diameter, in plastic case .....

PANTAR, f/4, 75mm., 60mm. diameter in plastic case .....

CASE, leather, for 1 Pantar lens.....

CASE, leather, for 2 Pantars, front element, 1 Proxar lens, lens shade 28.5mm. and 2 filters 60mm. ....

PLASTIC CONTAINER for one Pantar lens....

LENS CAP, front, for Pantar 30 and 75mm.....

LENS CAP, rear, for Pantar 30 and 75mm.....

FILTERS, screw-on mount, 60mm., for Pantar 30 and 75mm.:

## ZEISS IKON MANUFACTURE

Ultra Violet 1x.....

Yellow 2x .....

Yellow Green 2x.....

Orange 5x .....

Red 8x .....

## DOMESTIC MANUFACTURE IN ZEISS

1A Skylight for Kodachrome, Kodacolor, Anscochrome, Ektachrome, Super Anscochrome, High Speed Ektachrome, all daylight .....

85C for Kodachrome and Ektachrome Type F .....

85B for Super Anscochrome-Tungsten and High Speed Ektachrome Type B.....

LENS SHADE, screw-on mount, 60mm. for Pantar 75mm. ....

CASE, leather, for lens shade, 60mm.....

MICRO ATTACHMENT for 25mm. Eye-Piece Sleeve, consisting of:

1 Adapter ring.....

1 Connecting ring.....

(Ocular with high eyepoint RECOMMENDED).

catalog  
number

PRICE

10.1291 . . . . . 175.00

20.7512 . . . . . 18.50

11.0601 . . . . . 76.00

11.0602 . . . . . 79.00

20.7753 . . . . . 9.50

20.7810 } . . . . . 17.00

20.7811 } . . . . . 17.00

20.7000 . . . . . 3.00

20.0604 . . . . . 1.00

20.0613 . . . . . 1.00

20.1009-UV . . . . . 18.00

20.1009-G . . . . . 18.00

20.1009-GR . . . . . 18.00

20.1009-O . . . . . 18.00

20.1009-R . . . . . 18.00

## IKON MOUNT

20.1009-1A . . . . . 18.00

20.1009-85C . . . . . 18.00

20.1009-85B . . . . . 18.00

20.0709 . . . . . 3.95

20.7823 . . . . . 3.50

20.1620 . . . . . 3.00

20.1616 . . . . . 12.50



*Leather case for Pantar lenses, Proxar lens,  
lens shade and filters.*



*Eveready case for Contaflex camera*



# Contaflex super System

(accessories also for III, IV and rapid models)



Pro-Tessar f/4 35mm



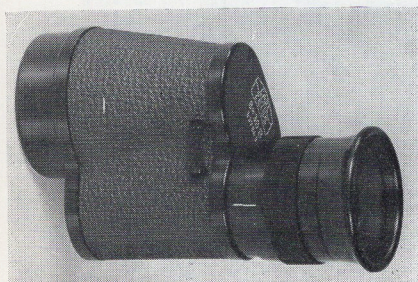
Pro-Tessar f/4 85mm



Pro-Tessar M 1:1



Leather case for Pro-Tessar lenses, Proxar lens, lens shade and filters



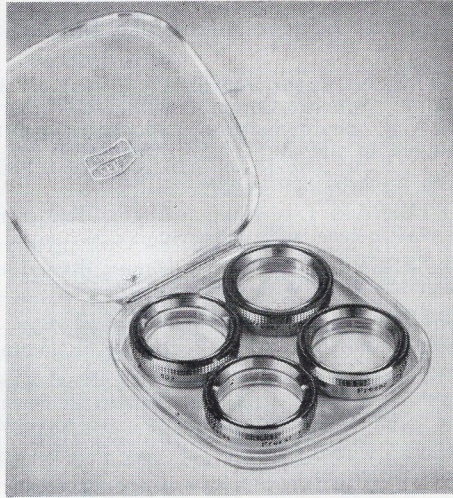
The Zeiss 8x30B Monocular with detachable eye cup fully extended for viewing

|  | catalog number                   | PRICE  |
|--|----------------------------------|--------|
| CONTAFLEX super, convertible Tessar f/2.8, 50mm., Synchro-Compur with self-timer, built-in photo-electric exposure meter coupled to the diaphragm, case extra..... | 10.1271 . . . . .                | 219.00 |
| CASE, Eveready for Contaflex super.....  | 20.7512 . . . . .                | 18.50  |
| PRO-TESSAR, f/4, 35mm., 49mm. diameter, in plastic case, with lens cap.....  | 11.1201 . . . . .                | 99.00  |
| PRO-TESSAR, f/4, 85mm., 60mm. diameter, in plastic case, with lens cap.....  | 11.1202 . . . . .                | 103.00 |
| PRO-TESSAR M 1:1, 3-elements.....  | 11.1204 . . . . .                | 57.00  |
| CASE, leather, for 1 Pro-Tessar 35 or 85mm.  | 20.7753 . . . . .                | 9.50   |
| CASE, leather, for 2 Pro-Tessars, front element, 1 Proxar lens, lens shade 28.5mm. and 2 filters 60mm.....   | 20.7810 } . . . . .<br>20.7811 } | 17.00  |
| PLASTIC CONTAINER for one Pro-Tessar lens (35mm. or 85mm.).....  | 20.7000 . . . . .                | 3.00   |
| LENS CAP, front, for 35mm. Pro-Tessar.....   | 20.0605 . . . . .                | 1.00   |
| LENS CAP, front, for 85mm. Pro-Tessar.....   | 20.0604 . . . . .                | 1.00   |
| LENS CAP, rear, for all Pro-Tessars.....   | 20.0613 . . . . .                | 1.00   |
| FILTERS, screw-on mount, 60mm. for Pro-Tessar 35mm. (step-up ring #20.1011 required) and Pro-Tessar 85mm.:   |                                  |        |
| ZEISS IKON MANUFACTURE   |                                  |        |
| Ultra Violet 1x.....   | 20.1009-UV . . . . .             | 18.00  |
| Yellow 2x .....  | 20.1009-G . . . . .              | 18.00  |
| Yellow Green 2x.....   | 20.1009-GR . . . . .             | 18.00  |
| Orange 5x .....  | 20.1009-O . . . . .              | 18.00  |
| Red 8x .....   | 20.1009-R . . . . .              | 18.00  |
| DOMESTIC MANUFACTURE IN ZEISS IKON MOUNT   |                                  |        |
| 1A Skylight for Kodachrome, Kodacolor, Anscochrome, Ektachrome, Super Anscochrome, High Speed Ektachrome, all daylight .....                                       | 20.1009-1A . . . . .             | 18.00  |
| 85C for Kodachrome and Ektachrome Type F .....   | 20.1009-85C . . . . .            | 18.00  |
| 85B for Super Anscochrome-Tungsten and High Speed Ektachrome, Type B .....   | 20.1009-85B . . . . .            | 18.00  |
| INTERMEDIATE RING for 35mm. Pro-Tessar (step-up ring from 49mm. to 60mm. for using standard 60mm. filters and lens shade) .....                                    | 20.1011 . . . . .                | 3.50   |
| FILTERS, screw-on mount, 49mm., for 35mm. Pro-Tessar only:   |                                  |        |
| ZEISS IKON MANUFACTURE   |                                  |        |
| Ultra Violet 1x.....   | 20.1007-UV . . . . .             | 11.00  |
| Yellow 2x .....  | 20.1007-G . . . . .              | 11.00  |
| Yellow Green 2x.....   | 20.1007-GR . . . . .             | 11.00  |
| Orange 5x .....  | 20.1007-O . . . . .              | 11.00  |
| Red 8x .....   | 20.1007-R . . . . .              | 11.00  |
| LENS SHADE, screw-on mount, 60mm., for 35mm. and 85mm. Pro-Tessar (35mm. Pro-Tessar requires step-up ring #20.1011).....   | 20.0709 . . . . .                | 3.95   |
| CASE, leather, for lens shade, 60mm....  | 20.7823 . . . . .                | 3.50   |
| MICRO ATTACHMENT for 25mm. Eye piece Sleeve, consisting of:  |                                  |        |
| 1 Adapter ring .....   | 20.1620 . . . . .                | 3.00   |
| 1 Connecting ring .....  | 20.1616 . . . . .                | 12.50  |
| (Ocular with high eyepoint RECOMMENDED).   |                                  |        |
| MONOCULAR 8x30 B, f/16, 400 mm. tele attachment (for close-up lenses for Monocular, see Binocular Price Sheet F-3).....  | 20.1629 . . . . .                | 93.00  |
| CASE, leather, for Monocular.....  | 20.7812 . . . . .                | 10.50  |





Leather case for lens shade and 3 filters



Proxar close-up lenses, slip-on mount, 28.5mm in plastic case (#20.7070)

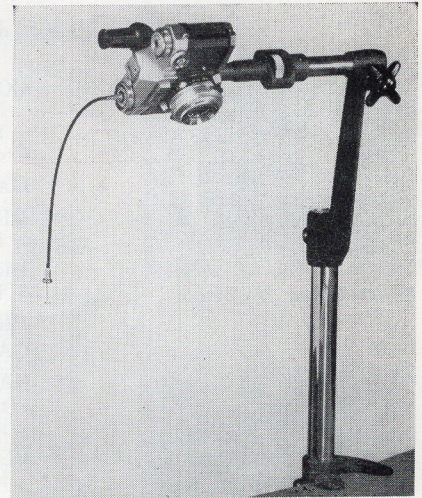
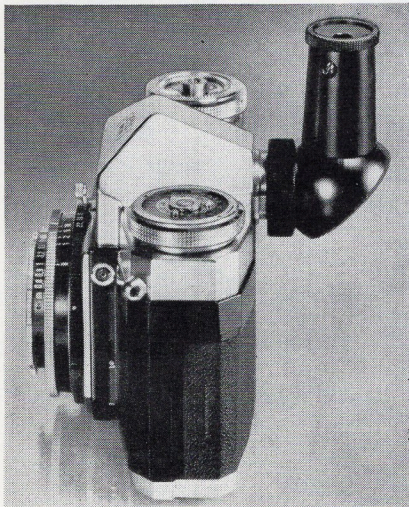


Table reproduction stand



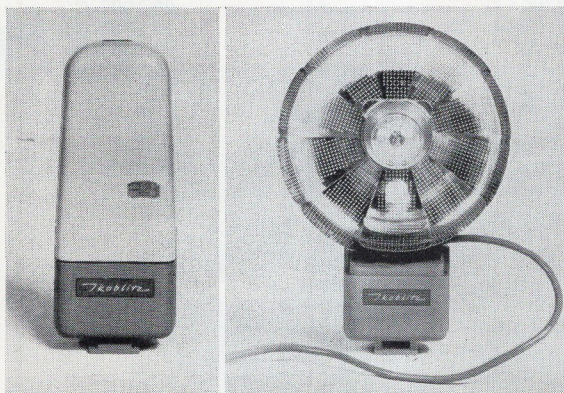
Right-angle view-finder



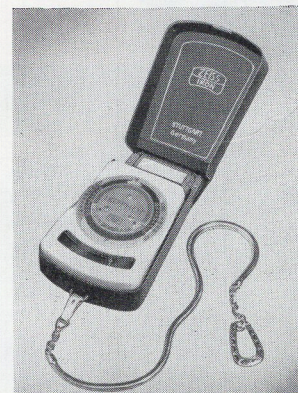
Cassettes



Eveready case



Ikoblitz 4 closed and open



Ikophot Rapid exposure meter



# Accessories for all Contaflex models

|   | catalog<br>number | Price    |
|---|-------------------|----------|
| ACCESSORY SHOE for flash attachment on top of Contaflex I, II, III, IV, alpha, beta.....  | 20.0210           | 3.60     |
| FILTERS, screw-on mount, 27mm., for Contaflex, Steritar D and Steritar B:   |                   |          |
| Ultra Violet 1x   | 20.1000-UV        | 6.00     |
| Yellow 2x   | 20.1000-G         | 6.00     |
| Yellow Green 2x   | 20.1000-GR        | 6.00     |
| Orange 5x   | 20.1000-O         | 6.00     |
| Red 8x  | 20.1000-R         | 6.00     |
| 1A Skylight for Kodachrome, Kodacolor, Anscochrome & Ektachrome Daylight  | 20.1000-1A        | 6.00     |
| 85C for Kodachrome & Ektachrome Type F  | 20.1000-85C       | 6.00     |
| 85B for Super Anscochrome-Tungsten and High Speed Ektachrome, Type B  | 20.1000-85B       | 6.00     |
| PLASTIC CASE for 4 filters, 27mm.....   | 20.7060           | 1.50     |
| CONTAPOL 3x, Polarizing filter.....   | 20.1200           | 12.50    |
| LENS CAP for front of 45mm. and 50mm. Tessar and Pantar.....  | 20.0602           | 1.00     |
| LENS SHADE, slip-on mount, 28.5mm.....  | 20.0700           | 1.95     |
| LENS SHADE, screw-in mount, 27mm., rubber.....  | 20.0713           | 1.95     |
| CASE, leather, for lens shade, 28.5mm.....  | 20.7821           | 1.75     |
| CASE, leather, for 1 lens shade 28.5mm. and 3 filters 27mm.....   | 20.7822           | 2.75     |
| PROXAR CLOSE-UP LENSES, slip-on mount, 28.5mm.:   |                   |          |
| 1x, f = 1m (for distances 40 to 18 in.).....  | 20.0800           | 6.00     |
| 2x, f = 0.5m (for distances 20 to 12 in.).....  | 20.0801           | 6.00     |
| 3x, f = 0.3m (for distances 12 to 8 in.).....   | 20.0802           | 6.00     |
| 4x, f = 0.2m (for distances 8 to 6 in.).....  | 20.0803           | 6.00     |
| SET OF 4 PROXAR LENSES in plastic case with depth of field indicator.....   | 20.7070           | 24.00    |
| 10x, f = 0.1m (for distances 3½ to 4¼ in.), screw-in mount, 27mm.....   | 20.0804           | 12.50    |
| TABLE REPRODUCTION STAND (specify camera model) consisting of:  |                   |          |
| Table Clamp.....  | 20.1826           | 11.50    |
| Pillar, 2 ft. high.....   | 20.1819           | 11.50    |
| Connecting Arm.....   | 20.1828           | 12.50    |
| Adapter with tripod screw for Contaflex I, II, III, IV, alpha, beta or  | 20.1823           | 14.50    |
| Adapter with tripod screw for Contaflex rapid, super, prima.....  | 20.1824           | 12.50    |
| LIGHTING UNIT FOR TABLE REPRODUCTION STAND:   |                   |          |
| 1 T-Clamp.....  | 20.1810           | 10.00    |
| 1 Transverse Tube.....  | 20.1820           | 8.50     |
| 2 Clamps.....   | 20.1811           | ea. 7.50 |
| 2 Tubes for carrying Reflector.....   | 20.1808           | ea. 3.00 |
| 4 Clamps.....   | 20.1812           | ea. 7.50 |
| 4 Reflectors with articulated tubes and U.S. adapter.....   | 20.1813           | ea. 9.50 |
| RIGHT-ANGLE VIEWFINDER for viewing and focusing at waist-level and for copying work, photo-micrography, etc.....  | 20.1614           | 20.00    |
| FLASH CORD (4-inch) with angular plug.....  | 20.2210           | 1.40     |
| CASSETTE, complete.....   | 20.0300           | 7.50     |
| TAKE-UP SPOOL.....  | 20.0001           | .50      |
| CORE FOR CASSETTE.....  | 20.0301           | .50      |
| CABLE RELEASE, locking.....   | 20.0281           | 1.60     |
| NECK STRAP for camera (with lock).....  | 20.0211           | 1.95     |
| EYE-CORRECTION LENSES (spherical only) from ± 1 to ± 5 diopters in steps of 0.5 diopters each (on special order only together with prescription for eye used).....  | 20.0504           | 3.00     |
| IKOPHOT RAPID photo-electric exposure meter complying with ASA specifications and calibrated for both linear shutter and cine speeds, with light values, for reflected and incident light readings, small compact design for instant one-hand operation, complete with metal safety chain and leather case..... | 20.2402           | 19.95    |



*Accessories for all Contaflex models—continued*

IKOBLITZ 4, BC flash unit for bayonet base flash bulbs No. 5, with folding reflector, removable adapter for M5 and M25 bulbs. For 15-volt BC battery (battery not included).....

| catalog<br>number | PRICE |
|-------------------|-------|
| 20.2214 . . . . . | 9.95  |

**BOOKS:** The Contaflex Way by H. Freytag, 310 pages.....  
 The Contaflex Manual by E. S. Bomback, 256 pages.....  
 The Contaflex Guide by W. D. Emanuel, 80 pages.....

|             |      |
|-------------|------|
| — . . . . . | 4.95 |
| — . . . . . | 7.95 |
| — . . . . . | 1.95 |





**TENAX AUTOMATIC, SYMBOLICA,  
CONTINETTE, CONTESSA,  
CONTESSA-MATIC,  
CONTESSA-MATIC E CAMERAS  
AND ACCESSORIES**

**35mm**



Tenax Automatic  
Symbolica  
Continette  
Contessa  
Contessa-matic  
Contessa-matic E

} D-2

## TENAX AUTOMATIC (35mm)

Fully automatic 35mm camera with Carl Zeiss Tessar f/2.8, 50mm lens in Prontomat-S shutter (1/30th to 1/500th second). Built-in exposure meter, automatically selects appropriate shutter speed and "f" stop. Lens settings identified by symbols: Portrait, Group, Landscape. Built-in "X" type synchronization at 1/30 of a second for flash bulbs and electronic flash units.

Socket for Ikoblitz 4  
Special BC flash unit



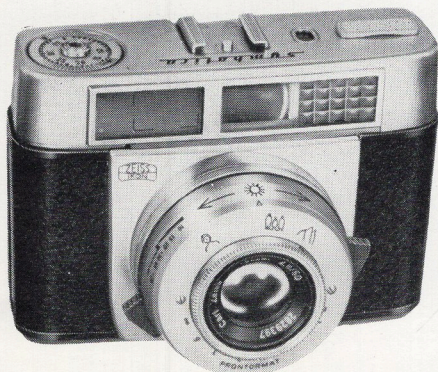
*The Tenax automatic camera*

## SYMBOLICA (35mm)

Automatic 35mm camera with Carl Zeiss f/2.8, 50mm lens in Prontomat shutter. Exposure meter interlocked with shutter, manually adjustable. Same lens symbols and same type of flash synchronization as Tenax.

## CONTINETTE (35mm)

Standard 35mm camera with conventional shutter speed and "f" stop settings. Equipped with Carl Zeiss Lucinar f/2.8, 50mm lens in Pronto shutter (4 shutter speeds and B), built-in self-timer. "X"-type synchronization at all available shutter speeds.



*The Symbolica camera*



*The Continette camera*



Tenax Automatic  
Symbolica  
Continette  
Contessa  
Contessa-matic  
Contessa-matic E

D-3

## CONTESSA-MATIC E (35mm)

Compact, automatic 35mm cameras with conventional shutter speeds and "f" stops, interlocked with built-in exposure meter. Equipped with Carl Zeiss Tessar f/2.8, 50mm lens in Prontor SLK special shutter (MXV), built-in range-finder. Exposure meter manually adjustable at waist and eye level.



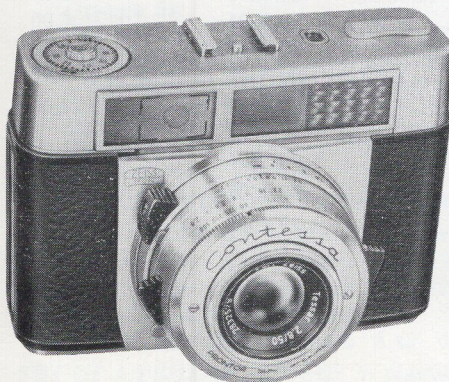
*The Contessa-matic E camera*

## CONTESSA-MATIC (35mm)

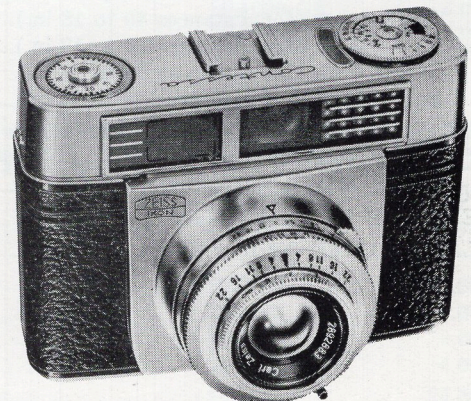
Same lens and shutter as CONTESSA-matic E. Built-in exposure meter adjustable at waist level.

## CONTESSA (35mm)

Standard 35mm camera with Carl Zeiss Tessar f/2.8, 50mm lens in Pronto shutter (1/30, 1/60, 1/125, 1/250 and B). Built-in self-timer, built-in — not coupled — exposure meter.



*The Contessa-matic camera*



*The Contessa camera*

CONTESSA-matic E, CONTESSA-matic and CONTESSA camera feature a bright line viewfinder with large eye piece. Conveniently-located rapid advance film lever which is flush with camera body and collapsible rewind crank.



Tenax Automatic  
Symbolica  
Continette  
Contessa  
Contessa-matic  
Contessa-matic E

D-4

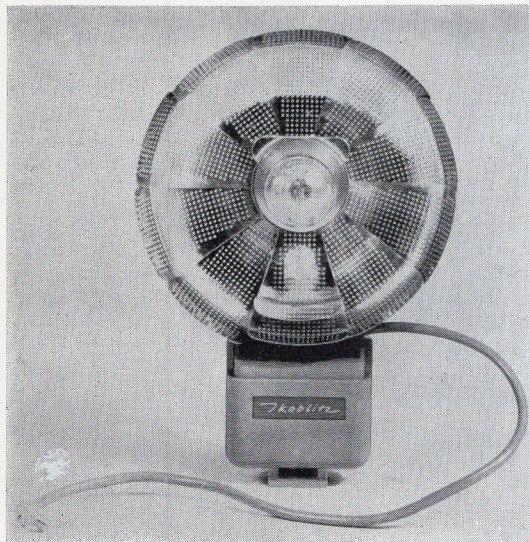
|   | Catalog Number | Price  |
|---|----------------|--------|
| TENAX automatic, Carl Zeiss Tessar f/2.8, 50mm, Prontomat-S shutter, case extra...  | 10.0651        | 108.00 |
| CASE, Eveready, leather, for Tenax.....   | 20.7524        | 12.50  |
| SYMBOLICA, Carl Zeiss Tessar f/2.8, 50mm, Prontomat shutter interlocked with built-in exposure meter, case extra.....                                 | 10.0635        | 94.00  |
| CASE, Eveready, leather, for Symbolica.....   | 20.7524        | 12.50  |
| CONTINETTE, Carl Zeiss Lucinar f/2.8, 45mm, Pronto shutter with self-timer, case extra .....  | 10.0625        | 44.00  |
| CASE, Eveready, leather, for Continette.....  | 20.7523        | 9.50   |
| CONTESSA, Carl Zeiss Tessar f/2.8, 50mm, Pronto shutter. Built-in, not coupled, exposure meter, case extra.....                                       | 10.0632        | 75.00  |
| CASE, Eveready, leather, for Contessa.....  | 20.7524        | 12.50  |
| CONTESSA-MATIC, Carl Zeiss Tessar f/2.8, 50mm, Prontor SLK shutter interlocked with built-in exposure meter, case extra.....                          | 10.0634        | 105.00 |
| CASE, Eveready, leather for Contessa-matic.....   | 20.7524        | 12.50  |
| CONTESSA-MATIC E, Carl Zeiss Tessar f/2.8, 50mm, built-in range-finder, Prontor SLK shutter interlocked with built-in exposure meter, case extra..... | 10.0645        | 125.00 |
| CASE, Eveready, leather, for Contessa-matic E.....  | 20.7524        | 12.50  |

**ACCESSORIES FOR TENAX AUTOMATIC, SYMBOLICA, CONTINETTE,  
CONTESSA, CONTESSA-MATIC and CONTESSA-MATIC E**

|  |  |                           |
|--|--|---------------------------|
| CABLE RELEASE, locking.....  | 20.0281                                  | 1.60                      |
| LENS SHADE, slip on mount, 28.5mm.....   | 20.0700                                  | 1.95                      |
| LENS SHADE, screw-in mount, 27mm, rubber.....  | 20.0713                                  | 1.95                      |
| LEATHER CASE, for lens shade, 28.5mm.....  | 20.7821                                  | 1.75                      |
| LEATHER CASE, for 1 lens shade, 28.5mm, and 3 filters, 27mm.....   | 20.7822                                  | 2.75                      |
| FILTERS, screw-on mount, 27mm  |  |                           |
| Ultra Violet 1x  | 20.1000-UV                               | 6.00                      |
| Yellow 2x  | 20.1000-G                                | 6.00                      |
| Yellow Green 2x  | 20.1000-GR                               | 6.00                      |
| Orange 5x  | 20.1000-O                                | 6.00                      |
| Red 8x   | 20.1000-R                                | 6.00                      |
| 1A Skylight for Kodachrome, Kodacolor, Anscochrome, Ektachrome, Super Anscochrome, High Speed Ektachrome, all daylight     | Domestic manufacture in Zeiss Ikon mount | 20.1000-1A<br>20.1000-85C |
| 85C for Kodachrome & Ektachrome, Type F  |  |                           |
| 85B for Super Anscochrome-Tungsten and High Speed  |  |                           |
| Ektachrome, Type B   |  |                           |
| POLARIZING FILTER CONTAPOL, 3x slip-on mount, 28.5mm.....  | 20.1201                                  | 11.50                     |
| PROXAR CLOSE-UP LENSES, slip-on mount, 28.5mm:   |  |                           |
| 1x, f = 1m (for distances 40 to 18 in.).....   | 20.0800                                  | 6.00                      |
| 2x, f = 0.5m (for distances 20 to 12 in.).....   | 20.0801                                  | 6.00                      |
| 3x, f = 0.3m (for distances 12 to 8 in.).....  | 20.0802                                  | 6.00                      |
| 4x, f = 0.2m (for distances 8 to 6 in.).....   | 20.0803                                  | 6.00                      |
| SET OF 4 PROXAR LENSES in plastic case with depth of field indicator.....  | 20.7070                                  | 24.00                     |
| CLOSE-UP VIEW-FINDER with measuring chain and Proxar lens 2x (for distances 12" and 20"), parallax-corrected, in case..... | 20.1506                                  | 20.00                     |
| LENS CAP for front of Lens.....  | 20.0602                                  | 1.00                      |
| PLASTIC CASE for four filters, 27mm.....   | 20.7060                                  | 1.50                      |



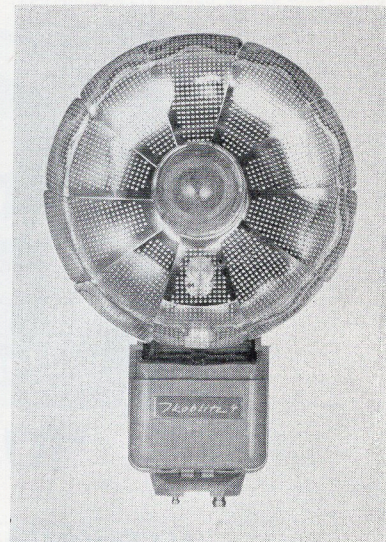
|   | Catalog Number | Price |
|---|----------------|-------|
| IKOBLITZ 4, BC flash unit for bayonet base flash bulbs No. 5 with folding reflector, removable adapter for M5 and M25 bulbs. For 15-volt battery (battery not included)   | 20.2214        | 9.95  |
| IKOBLITZ 4 SPECIAL, same as above but direct contact, "cord-less" type, for Symbolica, Tenax, Contessa-matic and Contessa-matic E.....  | 20.2217        | 9.95  |
| IKOPHOT RAPID photo-electric exposure meter complying with ASA Specifications and calibrated for both linear and cine shutter speeds, with light values, for reflected and incident light readings, small compact design for instant one-hand operation, complete with metal safety chain and leather case, for Continette..... | 20.2402        | 19.95 |



The Ikoblitz 4 open.



The Ikoblitz 4 closed.



The Ikoblitz 4 Special open.

#### ACCESSORIES FOR CONTINA I, CONTINA-matic II and III (discontinued cameras)

|  |  |       |
|--|--|-------|
| CABLE RELEASE, locking.....  | 20.0281                                  | 1.60  |
| LENS SHADE, slip on mount, 28.5 mm.....  | 20.0700                                  | 1.95  |
| LENS SHADE, screw-in mount, 27mm, rubber.....  | 20.0713                                  | 1.95  |
| LEATHER CASE, for lens shade, 28.5mm.....  | 20.7821                                  | 1.75  |
| LEATHER CASE, for 1 lens shade, 28.5mm, and 3 filters, 27mm.....   | 20.7822                                  | 2.75  |
| FILTERS, screw-on mount, 27mm  |  |       |
| Ultra Violet 1x  | 20.1000-UV                               | 6.00  |
| Yellow 2x  | 20.1000-G                                | 6.00  |
| Yellow Green 2x  | 20.1000-GR                               | 6.00  |
| Orange 5x  | 20.1000-O                                | 6.00  |
| Red 8x   | 20.1000-R                                | 6.00  |
| 1A Skylight for Kodachrome, Kodacolor, Anscochrome, Ektachrome, Super Anscochrome, High Speed Ektachrome, all daylight     | Domestic manufacture in Zeiss Ikon mount | 6.00  |
| 85C for Kodachrome & Ektachrome, Type F  |  |       |
| 85B for Super Anscochrome-Tungsten and High Speed Ektachrome, Type B   |  |       |
| 20.1000-85B  |  | 6.00  |
| POLARIZING FILTER CONTAPOL, 3x slip-on mount, 28.5mm.....  | 20.1201                                  | 11.50 |
| PROXAR CLOSE-UP LENSES, slip-on mount, 28.5mm:   |  |       |
| 1x, f = 1m (for distances 40 to 18 in.).....   | 20.0800                                  | 6.00  |
| 2x, f = 0.5m (for distances 20 to 12 in.).....   | 20.0801                                  | 6.00  |
| 3x, f = 0.3m (for distances 12 to 8 in.).....  | 20.0802                                  | 6.00  |
| 4x, f = 0.2m (for distances 8 to 6 in.).....   | 20.0803                                  | 6.00  |
| SET OF 4 PROXAR LENSES in plastic case with depth of field indicator.....  | 20.7070                                  | 24.00 |
| CLOSE-UP VIEW-FINDER with measuring chain and Proxar lens 2x (for distances 12" and 20"), parallax-corrected, in case..... | 20.1506                                  | 20.00 |
| LENS CAP for front of Lens.....  | 20.0602                                  | 1.00  |



Tenax Automatic  
Symbolica  
Continette  
Contessa  
Contessa-matic  
Contessa-matic E

D-6

IKOPHOT RAPID photo-electric exposure meter complying with ASA Specifications and calibrated for both linear shutter and cine speeds, with light values, for reflected and incident light readings, small compact design for instant one-hand operation, complete with metal safety chain and leather case, for Contina I.....

number  
catalog

PRICE

20.2402

19.95

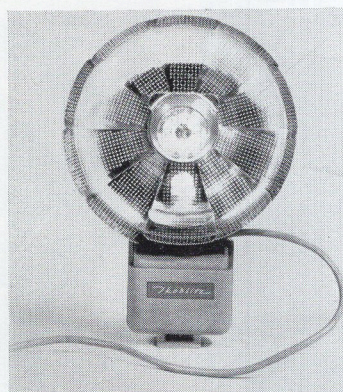
IKOBLITZ 4, BC flash unit for bayonet case flash bulbs No. 5, with folding reflector, removable adapter for M5 and M25 bulbs. For 15-volt battery (battery not included).....

20.2214

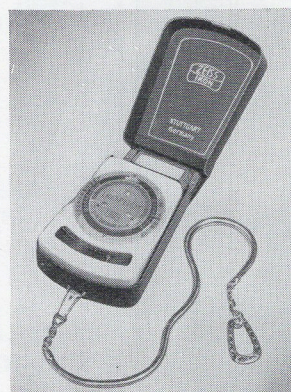
9.95

BOOK: The Contina Guide by W. D. Emanuel, 93 pages.....

1.95



*Ikoblitz 4 flash unit*



*Ikophot Rapid exposure meter*

### ACCESSORIES FOR CONTINA-matic III (discontinued camera)

|  | catalog<br>number | PRICE |
|--|-------------------|-------|
| PANTAR, f/4, 30mm., 60mm. diameter, in plastic case.....   | 11.0601           | 76.00 |
| PANTAR, f/4, 75mm., 60mm. diameter, in plastic case.....   | 11.0602           | 79.00 |
| WIDE ANGLE VIEW-FINDER for 30mm. Pantar in leather case.....   | 20.1507           | 10.50 |
| TELE RANGE & VIEW-FINDER for 75mm. Pantar in leather case  | 20.1509           | 18.00 |
| CLOSE-UP VIEW-FINDER with measuring chain and Proxar lens<br>2x (for distances 12" and 20"), parallax corrected, in case (also<br>for Contina I and II)..... | 20.1506           | 20.00 |
| FILTERS, screw-on mount, 60mm. for Pantar 30 and 75mm.:  |                   |       |
| Ultra Violet 1x  | 20.1009-UV        | 18.00 |
| Yellow 2x  | 20.1009-G         | 18.00 |
| Yellow Green 2x  | 20.1009-GR        | 18.00 |
| Orange 5x  | 20.1009-O         | 18.00 |
| Red 8x   | 20.1009-R         | 18.00 |
| 1A Skylight for Kodachrome, Kodacolor, Ansochrome & Ektachrome Daylight  | 20.1009-1A        | 18.00 |
| 85C for Kodachrome & Ektachrome Type F   | 20.1009-85C       | 18.00 |
| 85B for Super Ansochrome-Tungsten and High Speed Ektachrome, Type B  | 20.1009-85B       | 18.00 |
| CASE, leather, for one Pantar lens, 30 or 75mm.....  | 20.7753           | 9.50  |
| CASE, leather, for 2 Pantars, 2 view-finders and 2 filters.....  | 20.7810           | 16.00 |
| PLASTIC CONTAINER for one Pantar lens.....   | 20.7000           | 3.00  |
| LENS CAP, front, for Pantar 30 and 75mm.....   | 20.0604           | 1.00  |
| LENS CAP, rear, for Pantar 30 and 75mm.....  | 20.0613           | 1.00  |
| LENS SHADE, screw-on mount, 60mm. for Pantar 75mm.....   | 20.0709           | 3.95  |
| LEATHER CASE for lens shade, 60mm.....   | 20.7823           | 3.50  |





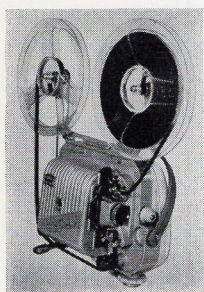
**MOVILUX 8a, MOVISCOP,  
 IKOMAT, IKOSCOPE  
 and ACCESSORIES**



## Movilux 8a (8mm Projector)

A new, modern 8mm Projector of beautiful streamlined shape and pleasant all-round appearance. Its small, compact design is unique in the 8mm movie field. The new low-voltage lamp with built-in mirror provides a surprisingly brilliant image with a marked absence of heat. The superior Carl Zeiss P-Sonnar f/1.3, 20mm lens assures pin-point sharpness on the screen. The Projector offers the possibility of using a sound synchronizer which plugs right into the Projector. Any tape recorder can be used for sound synchronization with this device.

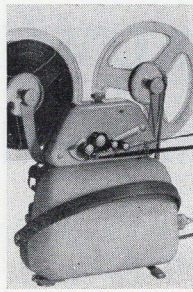
|  | catalog number | Price  |
|--|----------------|--------|
| MOVILUX 8a Projector, with Carl Zeiss P-Sonnar f/1.3, 20mm lens for 120-volt, 60-cycles, with lamp, cord and 400-ft. reel..... | 36.0032        | 178.00 |
| SOUND SYNCHRONIZER .....   | 36.3041        | 30.00  |
| REMOTE CONTROL, with speed adjustment.....   | 36.3042        | 20.00  |
| EXTRA 400-ft. REEL.....  | 36.5511        | 1.00   |
| EXTRA LOW-VOLTAGE LAMP.....  | 36.6001        | 8.50   |
| CASE, for Movilux 8a, Sound Synchronizer, Remote Control, Reels, Spare Lamps, and Cord.....                                    | 36.7701        | 22.00  |
| SPLICER, for 8mm and 16mm film.....  | 36.5600        | 10.50  |
| BASEBOARD, for Splicer (can be attached to Moviscop Baseboard)   | 36.5601        | 2.00   |



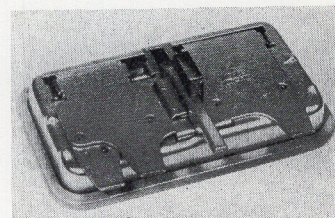
Movilux 8a (shell off) ready for use.



The streamlined design of the Movilux 8a projector.



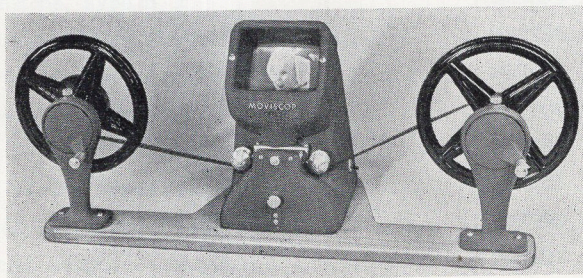
Sound Synchronizer fits atop Movilux 8a.



The Zeiss Ikon Splicer for both 8mm and 16mm film.

## Moviscop Editors

|  |         |        |
|--|---------|--------|
| MOVISCOP VIEWER and EDITOR for 8mm. film, with rewinds and baseboard (on special order only).....  | 36.2013 | 112.00 |
| MOVISCOP VIEWER and EDITOR for 16mm. film, with rewinds and baseboard (on special order only)..... | 36.2513 | 116.00 |
| MOVISCOP VIEWER and EDITOR for 16mm. film, without baseboard and without rewinds.....              | 36.2512 | 96.00  |
| SPARE LAMP for Moviscop.....   | 36.6002 | 2.25   |



Moviscop Editor

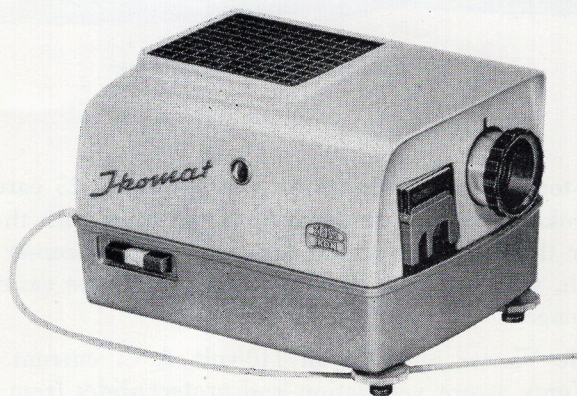


# IKOMAT AUTOMATIC 2 x 2 in. SLIDE PROJECTOR WITH REMOTE CONTROL

The Ikomat is a completely automatic projector for regular 35mm. color slides and "super slides." Its streamlined appearance, smart two-tone finish and traditional Zeiss Ikon workmanship make it the ideal projection equipment for the quality-minded photographer. With a 12-foot remote control cord, he runs the complete slide show while sitting with the audience. At the touch of three buttons, he feeds the slides through the projector — forwards or backwards — and simultaneously adjusts the focus of the lens. Other features are:

- 1) Smooth and virtually silent operation.
- 2) Protection of treasured slides against damage.
- 3) Slides are pre-conditioned to prevent "popping."
- 4) Perfect ventilation to keep projector cool.
- 5) Extra bright, sharp image with Zeiss Ikon Diatar f/2.5, 100mm. lens and built-in aspheric condenser system.

The IKOMAT can be used with the Diatakt tape recorder synchronizer, which synchronizes the commentary or music with the automatic change of slides at pre-selected intervals.



*The Ikomat Automatic Slide Projector*

OVERALL DIMENSIONS: 11½" x 8¼" x 7½"

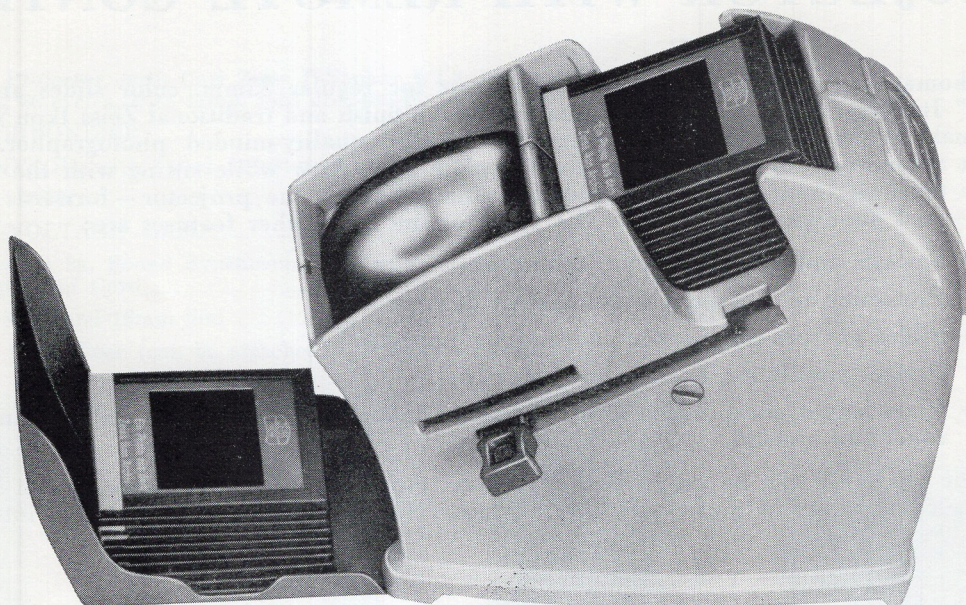
WEIGHT: 15 lbs.

LAMPS: 120-volt, 500-watt lamp (DAK) or 120-volt, 300-watt lamp (CWD).

|  | catalog number | PRICE    |
|--|----------------|----------|
| IKOMAT, automatic slide projector for 2 x 2" slides with three-way remote control, Diatar f/2.5, 100mm. lens, 500-watt projection lamp, connecting cord and one magazine ..... | 38.0946 .....  | \$179.00 |
| CARRYING CASE FOR IKOMAT .....   | 38.7701 .....  | 20.50    |
| 2 SLIDE MAGAZINES (holding 30 slides each) in plastic container .....  | 38.5542 .....  | 2.85     |
| DIATAKT tape recorder synchronizer .....   | 38.4002 .....  | 68.00    |



## THE ZEISS IKON IKOSCOPE TABLE SLIDE VIEWER



*The Ikoscop Table Slide Viewer*

This modern, two-tone plastic table viewer accepts up to 25 cardboard-mounted slides at a loading. A single stroke of the lever, which collapses flush with the casing when not in use, shifts each slide under the brilliant viewing lens and simultaneously drops the previous slide into a receptacle which, when not in use, swings flush with the casing to protect the viewing lens from dust and damage.

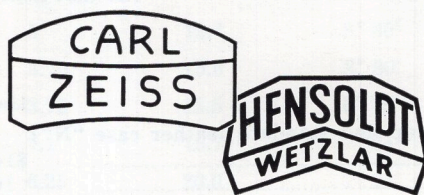
The Ikoscop Table Viewer operates on 110-volt A. C. current and uses a candelabra-based 15-watt lamp. Vents assure ventilation and protect slides from over-heating.

The Ikoscop measures 3 x 5 x 6 inches over all and weighs 14 ounces.

A Film Strip Holder is available as an accessory.

|   | catalog<br>number | PRICE   |
|---|-------------------|---------|
| IKOSCOPE TABLE VIEWER, complete with lamp and cord..... | 38.6304 .....     | \$13.95 |
| IKOSCOPE FILM STRIP HOLDER (optional accessory) .....   | 38.6400 .....     | 1.00    |
| SPARE LAMP, 15-W., 120-V., for IKOSCOPE.....            | 38.6017 .....     | .50     |





# BINOCULARS AND ACCESSORIES



# CARL ZEISS BINOCULARS



*The Carl Zeiss 8x30 central-focusing binocular and standard case "N"*



*The Carl Zeiss 15x60 central-focusing binocular*

|  | List Price | Retail<br>Excise Tax |
|--|------------|----------------------|
| <b>BINOCULARS</b> (Complete with neck-strap and standard leather case "N")                                       |            |                      |
| 6 x 30, central focusing.....  | \$144.00   | 10%                  |
| 8 x 30, central focusing.....  | 162.00     | 10%                  |
| 8 x 30B, central focusing, for wearers of eyeglasses.....  | 168.00     | 10%                  |
| 7 x 50, individual focusing.....   | 204.00     | 10%                  |
| 8 x 50B, central focusing.....   | 261.00     | 10%                  |
| 10 x 50, central focusing.....   | 291.00     | 10%                  |
| 15 x 60, central focusing.....   | 339.00     | 10%                  |
| <b>LEATHER CASES</b> (standard case "N" or sports case "S" for binoculars)                                       |            |                      |
| 6 x 30, 8 x 30 and 8 x 30B.....  | 15.60      | none                 |
| 7 x 50 and 8 x 50B.....  | 21.00      | none                 |
| 10 x 50.....   | 21.00      | none                 |
| 15 x 60.....   | 27.00      | none                 |
| <b>MONOCULARS</b> (without neck cord or case)  |            |                      |
| 8 x 30.....  | 78.00      | none                 |
| 8 x 30B, for eyeglass wearers.....   | 93.00      | none                 |
| 15 x 60, with tripod socket.....   | 180.00     | none                 |
| <b>LEATHER CASE</b> (standard case for monoculars)   |            |                      |
| 8 x 30 and 8 x 30B.....  | 10.50      | none                 |
| <b>BINOCULAR ACCESSORIES</b>   |            |                      |
| Neck strap for binoculars.....   | 1.35       | none                 |
| Neck cord for monoculars, 8 x 30 and 8 x 30B.....  | 1.80       | none                 |
| Shoulder strap for standard case "N".....  | 2.10       | none                 |
| Shoulder strap for sports case "S".....  | 1.80       | none                 |
| Shoulder pad (fits all straps for leather cases).....  | .75        | none                 |
| Rain guard (fits all Zeiss binoculars).....  | 2.40       | none                 |
| Button anchor strap.....   | .75        | none                 |
| Replacement eye-cups (except for 8 x 30B and 8 x 50B),<br>(specify inner diameter of eye-cup threads) each.....  | 1.00       | none                 |
| Flat rubber eye-cups for eyeglass wearers, all models, (specify<br>inner diameter of eye-cup threads), pair..... | 4.20       | none                 |
| Convertible soft rubber eye-cups for 8 x 30B and 8 x 50B, pair.....  | 4.20       | none                 |
| Umbral lenses (slip-on mounts), pair.....  | 10.50      | none                 |
| Anti-glare glasses (slip-on mounts), pair.....   | 10.50      | none                 |
| Solar observation glasses (slip-on mounts), pair.....  | 10.50      | none                 |
| Punktal eye-correction lenses (slip-on mounts), made to<br>prescription, each from.....                          | 6.90 up    | none                 |
| Rubber Guards for 7 x 50 binocular only, set.....  | 10.50      | none                 |
| Tripod adapter for binoculars.....   | 8.25       | none                 |
| Graticule F-1 or F-2 (installed on special order).....   | 15.60      | none                 |

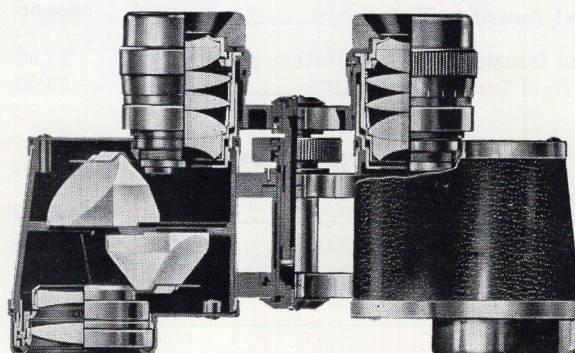


**CLOSE-UP LENSES** (for 6 x 30, 8 x 30 and 8 x 30B binoculars and 8 x 30 and 8 x 30B monoculars—usable only in front of monocular or one binocular lens)

|  | List Price | Retail<br>Excise Tax |
|--|------------|----------------------|
| 1 diopter, for observation at approximately 40 inches, each..  | \$ 13.50   | none                 |
| 2 diopters, for observation at approximately 20 inches, each.. | 15.00      | none                 |
| 3 diopters, for observation at approximately 13 inches, each.. | 15.90      | none                 |
| 5 diopters, for observation at approximately 8 inches, each..  | 36.00      | none                 |
| 8 diopters, for observation at approximately 5 inches, each..  | 26.10      | none                 |

### CARL ZEISS BINOCULARS — TECHNICAL DATA

| M O D E L          |   |                                       | F I E L D O F V I E W |   |                                 |                            |                           |
|--------------------|---|---------------------------------------|-----------------------|---|---------------------------------|----------------------------|---------------------------|
| Magnification<br>M |   | Clear objective<br>diameter<br>D (mm) | Exit<br>pupil<br>(mm) | Twilight<br>Performance<br>$\sqrt{M \cdot D}$ | Angular<br>measure<br>(degrees) | Yards at<br>1,000<br>yards | Weight<br>approx.<br>ozs. |
| BINOCULAR          |   |                                       |                       |   |                                 |                            |                           |
| 6                  | x | 30                                    | 5                     | 13.4  | 8° 30'                          | 150                        | 14½                       |
| 8                  | x | 30                                    | 3.75                  | 15.5  | 8° 30'                          | 150                        | 17                        |
| 8                  | x | 30B                                   | 3.75                  | 15.5  | 6° 18'                          | 110                        | 17                        |
| 7                  | x | 50                                    | 7.1                   | 18.7  | 7° 24'                          | 130                        | 32                        |
| 8                  | x | 50B                                   | 6.25                  | 20.0  | 7° 24'                          | 130                        | 37                        |
| 10                 | x | 50                                    | 5.0                   | 22.4  | 7° 24'                          | 130                        | 35                        |
| 15                 | x | 60                                    | 4.0                   | 30.0  | 4° 30'                          | 80                         | 45                        |
| MONOCULAR          |   |                                       |                       |   |                                 |                            |                           |
| 8                  | x | 30                                    | 3.75                  | 15.5  | 8° 30'                          | 150                        | 7                         |
| 8                  | x | 30B                                   | 3.75                  | 15.5  | 6° 18'                          | 110                        | 7                         |
| 15                 | x | 60                                    | 4.0                   | 30.0  | 4° 30'                          | 80                         | 22                        |

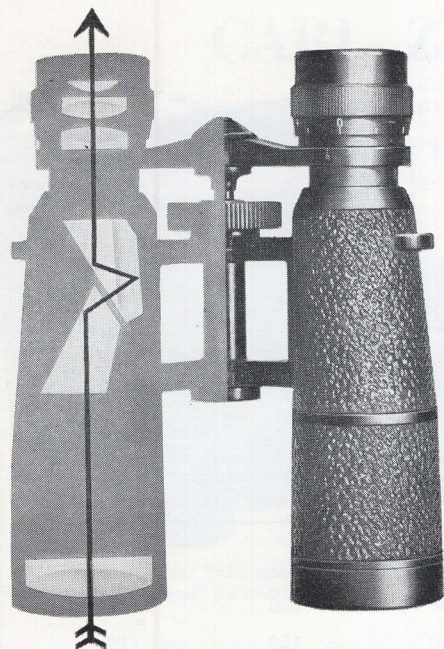


The smaller over-all dimensions of the new CARL ZEISS binocular came about through the introduction of an objective with air-spaces. Marginal sharpness is considerably improved by the use of oculars with six elements.

CARL ZEISS BINOCULARS ARE MADE IN WEST GERMANY

**CARL ZEISS, INC.**  
485 Fifth Avenue, New York 17, N. Y.



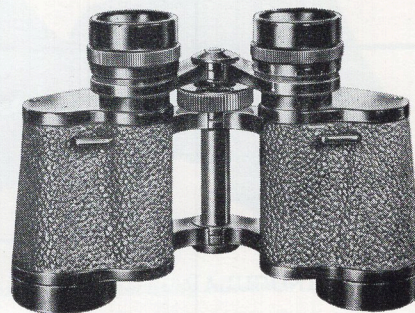


Roof-prism construction of  
Hensoldt Dialyt binocular

## HENSOLDT BINOCULARS



Hensoldt Diasport 8 x 20



Hensoldt Diagon 8 x 30

### PRISM BINOCULARS (complete with neck strap and leather case)

|           |  | List Price | Retail<br>Excise Tax |
|-----------|--|------------|----------------------|
| Dialyt,   | 8 x 32, central focusing.....                              | \$150.00   | 10%                  |
|           | 7 x 42, central focusing.....                              | 165.00     | 10%                  |
|           | 7 x 50, central focusing.....                              | 180.00     | 10%                  |
|           | 10 x 50, central focusing.....                             | 189.00     | 10%                  |
|           | 8 x 56, central focusing.....                              | 189.00     | 10%                  |
|           | 16 x 56, central focusing.....                             | 204.00     | 10%                  |
| Diagon,   | 6 x 30, central focusing.....                              | 111.00     | 10%                  |
|           | 8 x 30, central focusing.....                              | 117.00     | 10%                  |
|           | 7 x 50, central focusing.....                              | 156.00     | 10%                  |
|           | 10 x 50, central focusing.....                             | 168.00     | 10%                  |
| Diasport, | 8 x 20, central focusing, with soft leather pouch "T"..... | 87.00      | 10%                  |
|           | Same, with rigid Leather case "U".....                     | 90.00      | 10%                  |

### THEATRE GLASSES (complete with black luxury leather case "L")

|         |   |       |     |
|---------|---|-------|-----|
| Diadem, | 2½ x 30, central focusing, luxury model, black and gold ..... | 45.00 | 10% |
|---------|---|-------|-----|

### LEATHER CASES for Binoculars and Theatre Glasses

|           |                                   |       |      |
|-----------|-----------------------------------|-------|------|
| Dialyt,   | 8 x 32, case "N".....             | 12.60 | none |
|           | 7 x 42, case "N".....             | 12.60 | none |
|           | 7 x 50, case "N".....             | 15.00 | none |
|           | 10 x 50, case "N".....            | 15.00 | none |
|           | 8 x 56 and 16 x 56, case "N"..... | 15.00 | none |
|           |                                   |       |      |
| Diagon,   | 6 x 30 and 8 x 30, case "N".....  | 10.50 | none |
|           | 7 x 50, case "N".....             | 14.25 | none |
|           | 10 x 50, case "N".....            | 14.25 | none |
| Diasport, | Soft pouch "T".....               | 3.00  | none |
|           | Rigid case "U".....               | 6.00  | none |
| Diadem,   | Black zipper case "L".....        | 4.50  | none |



## BINOCULAR ACCESSORIES

|  | List Price | Retail<br>Excise Tax |
|--|------------|----------------------|
| Neck strap for Dialyt and Diagon, black.....   | .75        | none                 |
| Neck strap for Diasport.....   | .75        | none                 |
| Shoulder strap for Dialyt and Diagon case "N".....   | 1.50       | none                 |
| Shoulder strap for Diasport case "U".....  | 1.50       | none                 |
| Shoulder pad, brown (fits all Hensoldt case straps).....   | .50        | none                 |
| Leather rain guard.....  | 1.50       | none                 |
| Replacement eyecups, (specify inner diameter of eyecup threads) each.....  | 1.00       | none                 |
| Flat eyecups for eyeglass wearers, rubber protected, for Dialyt and Diagon models, (specify inner diameter of eyecup threads), pair..... | 2.00       | none                 |
| Flat eyecups for eyeglass wearers for Diasport models, pair.....   | 2.00       | none                 |
| Auxiliary slip-on rubber eyecups for sidelight protection for Dialyt and Diagon models, pair.....  | 2.00       | none                 |
| Yellow anti-glare glasses in slip-on mount for Dialyt and Diagon models, pair.....   | 3.00       | none                 |

## HENSOLDT BINOCULARS AND MONOCULARS — TECHNICAL DATA

| Model    | Linear magnification<br>M |   | Clear objective dia.<br>D<br>(mm) | Exit pupil<br>(mm) | Performance at twilight<br>$\sqrt{M \cdot D}$ | FIELD OF VIEW                |                         | Weight in<br>ozs. | Appr. overall length<br>(inches) |
|----------|---------------------------|---|-----------------------------------|--------------------|---|------------------------------|-------------------------|-------------------|----------------------------------|
|          |                           |   |                                   |                    |   | Angular measure<br>(degrees) | Yards at 1,000<br>yards |                   |                                  |
| DIALYT   | 8                         | x | 32                                | 4.0                | 16.0  | 8.6                          | 150                     | 20                | 6 $\frac{1}{8}$                  |
|          | 7                         | x | 42                                | 6.0                | 17.1  | 8.0                          | 140                     | 20 $\frac{1}{2}$  | 7 $\frac{1}{4}$                  |
|          | 7                         | x | 50                                | 7.14               | 18.7  | 7.1                          | 125                     | 24                | 8 $\frac{1}{8}$                  |
|          | 10                        | x | 50                                | 5.0                | 22.4  | 6.25                         | 110                     | 25                | 8 $\frac{3}{4}$                  |
|          | 8                         | x | 56                                | 7.0                | 21.2  | 6.25                         | 110                     | 25                | 8 $\frac{3}{4}$                  |
|          | 16                        | x | 56                                | 3.5                | 29.9  | 4.3                          | 75                      | 26 $\frac{1}{2}$  | 9 $\frac{3}{4}$                  |
| DIAGON   | 6                         | x | 30                                | 5.0                | 13.4  | 8.6                          | 150                     | 15 $\frac{3}{4}$  | 4 $\frac{3}{8}$                  |
|          | 8                         | x | 30                                | 3.75               | 15.5  | 8.6                          | 150                     | 16 $\frac{1}{2}$  | 4 $\frac{1}{2}$                  |
|          | 7                         | x | 50                                | 7.14               | 18.7  | 7.3                          | 128                     | 34 $\frac{1}{2}$  | 7                                |
|          | 10                        | x | 50                                | 5.0                | 22.4  | 6.9                          | 124                     | 35 $\frac{1}{2}$  | 6 $\frac{3}{4}$                  |
| DIASPORT | 8                         | x | 20                                | 2.5                | —   | 6.9                          | 120                     | 8 $\frac{3}{4}$   | 3                                |

Hensoldt Binoculars are made in West Germany

CARL ZEISS, INC.

485 Fifth Avenue, New York 17, N. Y.



Why it pays to feature

*Contaflex SUPER*



**SO MANY PEOPLE  
WANT IT**