

# Kodak for Cameras

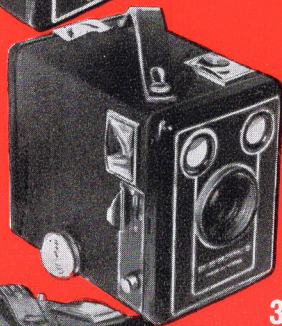




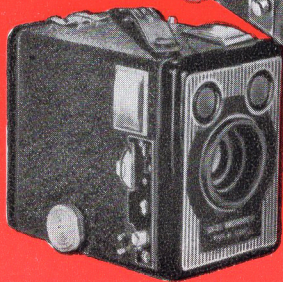
1



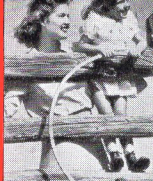
2



3



4



## *Baby Brownie* CAMERA

(1) — A delight to own and a pleasure to use is this modern and compact camera. It is all-moulded in a tough, durable plastic — very striking in its glossy black finish with metal fittings. Lens in front of shutter; direct-vision viewfinder. Provides for 8 exposures  $1\frac{3}{8} \times 2\frac{1}{2}$  ins. on Kodak V127 film.

## *Six-20 Brownie "C"*

(2) — Probably the most popular of the famous Brownie Family this model is the "ideal" for a beginner in photography — so easy and dependable is it to use. It has a sturdy all-metal body covered with black grained leatherette, a Kodak Meniscus lens and two brilliant viewfinders. It makes 8 exposures (snapshot or time) size  $2\frac{1}{4} \times 3\frac{1}{4}$  ins. on Kodak V620 film.

## *Six-20 Brownie "D"*

(3) — Yet another member of the famous Brownie Family, the Brownie "D" permits the making of pictures from three feet to infinity — a feature to place this model in a class of its own. In construction it is exactly the same as the Model "C" except for its built-in close-up attachment.

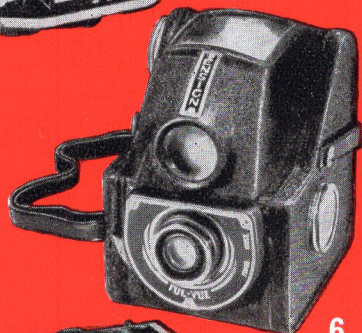
## *Six-20 Brownie "E"*

(4) — Here is Brownie simplicity and Kodak dependability combined. As well as incorporating all of the Model "C" 's features, the Model E includes: A built-in close-up lens to permit focusing down to 3 feet; a built-in colour filter to emphasise colour contrasts and cloud effects; standard tripod socket; screw socket to accommodate a cable release; flash contacts for use with the Kodak Flashholder.





5



6



7

## Brownie Reflex CAMERA

(5) — Picture-making with the Brownie Reflex is so amazingly simple that a child can do it — in its large brilliant viewfinder you see your subject exactly as it is in *actual* picture size. It has a fixed focus Meniscus lens, "T" and "1" exposure actions, push-button shutter release, tripod socket, all-moulded body and braided neck cord. On Kodak V127 film it makes 12 exposures  $1\frac{3}{8} \times 1\frac{1}{8}$  ins. Dimensions  $4\frac{3}{4} \times 3\frac{1}{2} \times 2\frac{1}{2}$  ins. Weight 15 ozs.

## Ensign Ful-Vue

(6) — Rapidly becoming popular amongst aspiring amateur photographers the Ful-Vue is versatility itself — its all-distance lens may be adjusted to take pictures from 3 ft. to infinity; its built-in shutter provides for time and snapshot exposures; and its large brilliant viewfinder gives an excellent image preview in almost actual size. It has an all-metal body complete with a carrying sling, and makes 12 pictures  $2\frac{1}{4} \times 2\frac{1}{4}$  in. on Kodak V120 film.

## Kodak Duaflex CAMERA

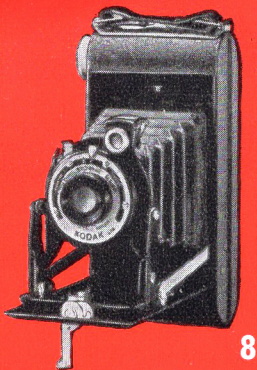
(7) — For modern smartness and simple efficiency this new and popular de-luxe reflex-type camera leads the field. Whether its owner be young or old, successful results are almost assured thanks to its Kodar f/8 focusing lens, large brilliant viewfinder, and double-exposure prevention device. Of robust construction and complete with carrying sling the Duaflex makes 12 pictures  $2\frac{1}{4} \times 2\frac{1}{4}$  ins. on Kodak V620 film.

## Kodak (Australasia) Pty. Ltd.

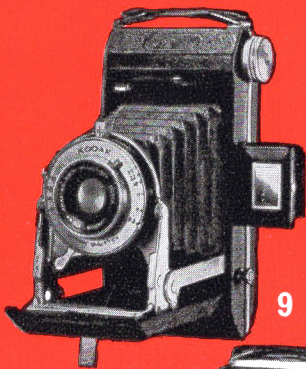
Sydney — Melbourne — Brisbane — Adelaide — Perth — Hobart —  
Launceston — Cairns — Townsville — Toowoomba — Rockhampton  
— Ballarat — Geelong — Newcastle — Katoomba



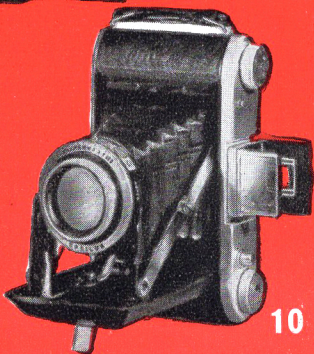




8



9



10

## *Six-20 Folding Brownie series*

(8) — Made in two models, the Folding Brownie is just the camera for the keen holiday-maker. The Meniscus lens model (illustrated) has a Kodette II Shutter to make either Time or Snapshot exposures. The Anaston f/6.3 lens model has a Dakon Shutter with speeds 1/50, 1/25, B. & T. and an eye-level viewfinder. Both models feature single movement opening and closing, pressed steel body (rustproof), morocco grain covering and hinged back.

## *Six-20 Kodak "A" CAMERAS*

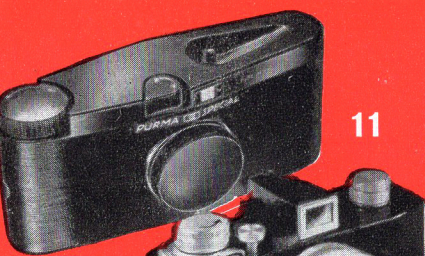
(9) — A versatile and efficient family of three. The Anastar f/6.3 lens model (illustrated) has a Dakon Shutter with speeds 1/50, 1/25, B. & T. It will stop down to f/32 and focus sharply from 4 ft. to infinity. The Anastar f/4.5 lens models have Epsilon shutters—four-speed (1/150, 1/100, 1/50, 1/25 sec.) and eight-speed (same, plus 1/10, 1/5, 1/2, 1 sec.) with B. & T. respectively, and focus down to 3½ ft. Metal body, leatherette covering, chrome fittings.

## *Ensign Selfix 820*

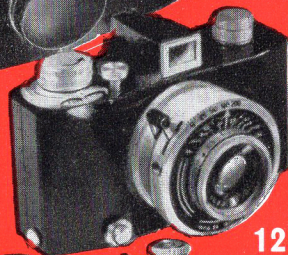
(10) — The ideal "first choice" for those who take their picture-making seriously — it combines the mechanical precision of Ensign and the optical supremacy of Ross. The Ensign Selfix 820 is fitted with a Ross Xpres 105mm f/3.8 lens set in an 8-speed Epsilon shutter (1 sec. to 1/250 sec. with "T" and "B"). If desired it can be adjusted to take 12 exposures (2¼ x 2¼ ins.). The mechanism incorporates a double-exposure prevention device, an Albada D/V optical viewfinder, a body shutter release and focusing from 5 ft. to infinity. Metal body, black leatherette covering, nickel and satin chrome fittings.

*All cameras on this page provide 8 exposures 2¼ x 3¼ ins. on Kodak film*

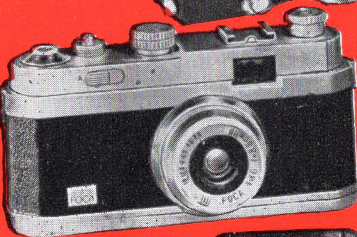




11



12



13



14



## Purma Special

(11) — Unique in design, performance and results — ideal for candid and fast action pictures. Beck f/6.3 lens, all-metal focal plane shutter (speeds of 1/25, 1/150, 1/450 sec.); gives 16 clear pictures  $1\frac{1}{4} \times 1\frac{1}{4}$  ins. on Kodak V127 film; fixed focus; direct vision optical viewfinder; strong all-moulded body; clamp-on lens cap.

## Lemm-Kim (24 x 36mm.) series

(12) — French made in two models — both very popular because of their high quality and low cost. Similar except for respective 4-speed and 8-speed shutters up to 1/200 sec. with "Bulb", both have Cross f/2.9 lens, automatic counter, optical viewfinder and safety-catch winding button. All-metal body, pigskin always-ready case.

## Foca (24 x 36mm.) series

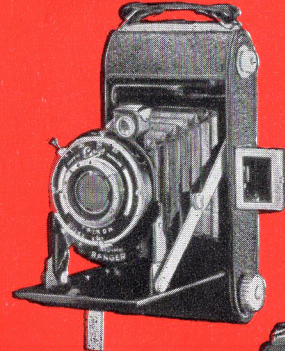
(13) — Four models — each with Oplar lens and focal plane shutter. All-metal body; satin chrome and nickel fittings; covered with black leatherette; complete with lens cap, always-ready case, and cable release. Model I (illustrated) with f/3.5 lens and shutter speeds 1/25 to 1/500 sec. Model II with f/3.5 lens, built-in optical rangefinder, shutter speeds 1/25 to 1/1000 sec. Model III similar to II but with f/1.9 lens. Universal model with f/2.8 coated lens, shutter speeds 1 to 1/1000 sec.

## Flexaret series

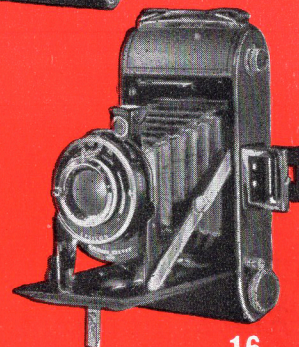
(14) — Two modern and popular reflex models — with f/4.5 and f/3.5 coated lenses. 8-speed Prontor II shutter (1 to 1/200 sec.); T. & B. exposures; focusing from 3 ft., direct vision finder; magnifying lens; strong light alloy body. Gives 12 pictures ( $2\frac{1}{4} \times 2\frac{1}{4}$ ) on Kodak V120 film. Always-ready case with f/3.5 model.

## Ensign Ranger series

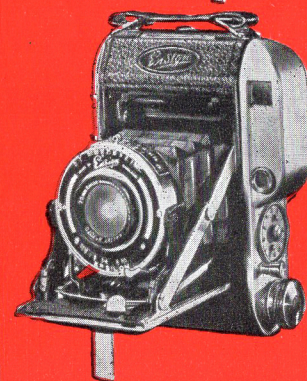
(15) — Carefully designed and sturdily built in two high quality models. The Model I features an Ensar f/6.3 focusing lens, 3-speed Trikon shutter (up to 1/100 sec.), D/V viewfinder. Model II possesses these features plus a coated lens, synchroflash contacts, and a sturdier and more attractive body. 8 exp. ( $2\frac{1}{4} \times 3\frac{1}{4}$  ins.) on V120 film.



15



16



17



## Ensign Pelfix 420 series

(16) — Two models — sturdy in construction, easy in action, reliable in performance — with either 4- or 8-speed Epsilon shutters up to 1/150 sec. Ensar f/4.5 lens. 12 ( $2\frac{1}{4} \times 2\frac{1}{4}$ ) or 8 ( $2\frac{1}{4} \times 3\frac{1}{4}$ ) exp. on V120 film.

## Ensign Auto-Range

(17) — Needle-sharp image with every exposure—thanks to its efficient double-image rangefinder. Fitted with Ensar f/3.5 lens, 8-speed Epsilon shutter (1 to 1/150 sec.) with B. & T. Gives either 12 ( $2\frac{1}{4} \times 2\frac{1}{4}$ ) or 16 ( $2\frac{1}{4} \times 1\frac{5}{8}$ ) exposures on Kodak V120 film. All-metal body, satin chrome fittings, leatherette covering, body shutter release.

## Retina I (24 x 36mm.)

(18) — An object of watch-like workmanship and precision! Is fitted with Xenar f/3.5 lens in 9-speed Compur-Rapid shutter (1 to 1/500 sec.) and "bulb". Body shutter release; optical eye-level finder; automatic counter; double-exposure prevention; sturdy die-cast body; satin-chrome fittings; and leatherette covering.

## Retina II (24 x 36mm.)

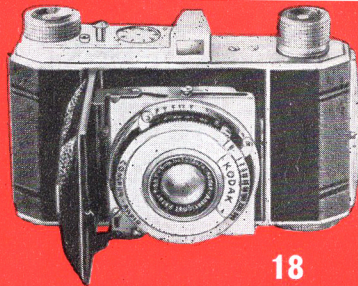
(19) — A handful of miniature camera perfection — ranks with finest of folding-type "miniatures". 50mm. Schneider Xenon f/2 lens in Compur-Rapid shutter. Incorporates features of Retina 1 plus coupled rangefinder of double image type — this operates with direct vision viewfinder.

## Ensign Commanda

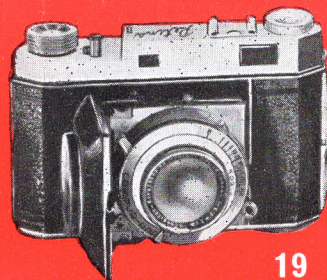
(20) — Outstanding in British dependability and Ensign craftsmanship. Has Ensar f/3.5 lens in 8-speed Epsilon shutter to 1/200 sec. Focal plane focusing; combined viewfinder and coupled rangefinder; automatic film wind. 12 ( $2\frac{1}{4} \times 2\frac{1}{4}$ ) or 16 ( $2\frac{1}{4} \times 1\frac{5}{8}$ ) exp. on Kodak V120 film.

For prices see current Camera Range Price List.

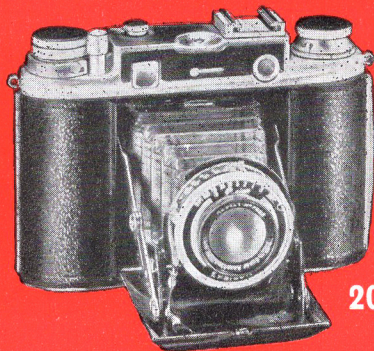
**KODAK DEALERS EVERYWHERE**



18



19



20