

KODAK

Catalogue







KODAK CATALOGUE 1938

CAMERAS • HOME MOVIE APPARATUS • FILMS • ACCESSORIES

Retail Branches of Kodak Ltd in Great Britain and Irish Free State

London

61-65 KINGSWAY WC2
96 VICTORIA STREET SW1
91 BISHOPSGATE EC2

184-186 REGENT STREET W1
59 BROMPTON ROAD SW3

Birmingham 45 CORPORATION STREET 2 *Liverpool* 70 LORD STREET 2

Newcastle-on-Tyne 110 GRAINGER STREET 1

Glasgow 46 BUCHANAN STREET C2 *Dublin* 89 GRAFTON STREET C3

Prices, descriptions and illustrations of the goods in this catalogue are correct at the time of going to press, but are subject to variation without notice

KODAK LTD KODAK HOUSE KINGSWAY LONDON WC2

TO READERS OF THIS CATALOGUE

The following pages tell you about the finest range of cameras, films and accessories in photography.

The goods themselves are here at our counter (or can be obtained for you speedily).

We shall be glad to help you choose a camera or any other piece of apparatus; our experience is entirely at your service in photographic matters.

★ ★ ★

After you have taken your pictures you will find we can be of service to you again, because we specialize in the production of sparkling prints and enlargements from amateurs' films.

★ ★ ★

Please keep this catalogue by you as a handy guide to everything you need for picture-taking and as a reminder of where you can obtain it.

On this and the opposite page are shown the actual sizes of pictures taken by some of the most popular 'Kodaks' and 'Brownies.'

*2½" x 1⅝". Pictures this size
taken by Six-20 Duo 'Kodak.'*





$2\frac{1}{2}" \times 1\frac{3}{4}"$. Pictures this size taken by Jiffy 'Kodak' V.P. and Baby 'Brownie'.

$3\frac{1}{4}" \times 2\frac{1}{4}"$. Pictures this size taken by Six-20 'Kodaks' and Six-20 'Brownies' (all models).



$4\frac{1}{4}" \times 2\frac{1}{2}"$. Pictures this size taken by Six-16 'Kodaks' and Six-16 'Brownies' (all models).



HOW TO CHOOSE A CAMERA

The main points to consider in making up your mind about a camera are—

The kind of photography you are chiefly interested in (e.g. holiday snaps, portraits, indoor work, flower studies, etc.)

Compactness and portability of camera.

Size of picture you prefer.

Price.

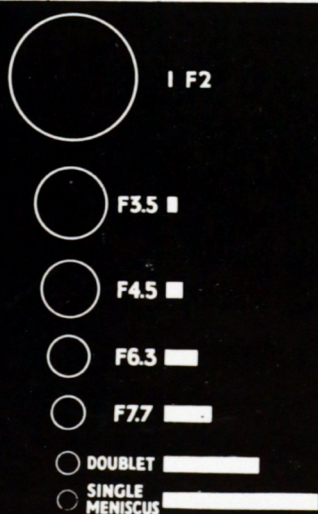
Every camera in this catalogue will give perfectly good, sharp, clear pictures. On a sunny summer day, the very simplest 'Brownie' is capable of taking perfectly good snaps. But you will probably want to take pictures also when conditions are not so favourable—when it's dull, say, or indoors—and then you will find the more advanced 'Kodaks' have the advantage. These are capable not only of taking pictures over a wider range of conditions but of taking more *kinds* of pictures—sharp snaps of quick-action sports subjects and head-and-shoulder close-ups without the aid of an attachment.

THE IMPORTANCE OF THE LENS

The main factor in deciding the versatility of a 'Kodak' or 'Brownie' is the lens—the most important part of any camera.

Pictures are made by the light that the lens lets through when the shutter opens and closes.

The more light a lens can admit in this time, the 'faster' it is said to be, and the more independent it makes you of lighting conditions.



Circles indicate relative speeds. Bars indicate relative time of exposure. The faster the lens, the shorter the exposure needed.

On a bright summer day, as we have seen, any Kodak lens will take perfectly exposed pictures. On dull days, or earlier or later in the day, or indoors, the fast lens has the advantage because it can still let in enough light to make good pictures with quick exposures.

LENS 'SPEED'

The amount of light that a lens lets through is controlled in the case of most 'Kodaks' by an adjustable 'diaphragm' or 'stop'. The speed of a lens is reckoned by the size of its largest stop. You will usually find these stops or '*f*' numbers marked round the shutter in folding 'Kodaks'. The *smaller* the '*f*' number the *faster* the lens. For example, a lens whose largest stop is $f4.5$ is faster than a lens whose largest stop is $f6.3$.

Note for the technically minded—The '*f*' rating of a lens is the figure arrived at by dividing the focal length by the diameter. The speed of a lens varies as the square of the '*f*' number, e.g. $f4.5$ is approximately twice as fast as $f6.3$.

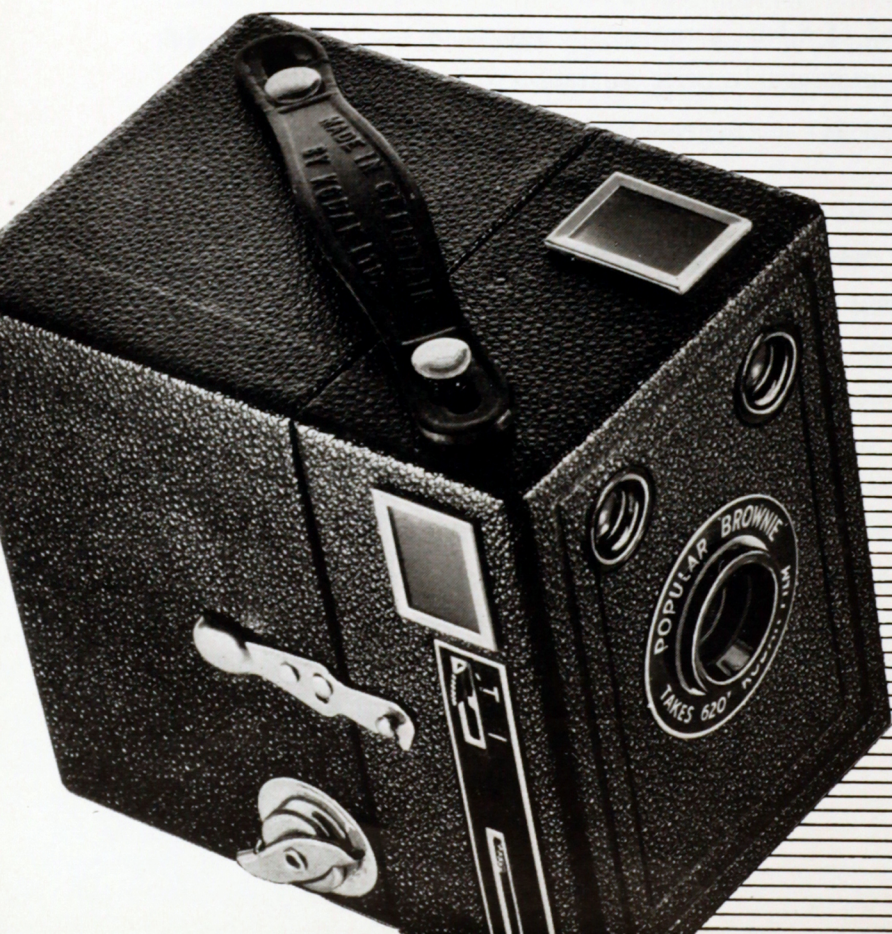
A good rule is—get the best lens you can afford.

A WORD ABOUT SHUTTERS

The shutter controls the length of *time* during which light passes through the lens to make a picture, just as the lens itself controls the *amount* of light. The quicker the shutter the more rapidly the subject can move without the picture being blurred.

On nearly all folding 'Kodaks' the shutter fitted provides you with a range of speeds; normal for views, portraits and groups; faster ones for restless subjects such as children at play and animals. More advanced amateurs will appreciate the very wide range of automatic speeds, from 1 second to $1/250$ th, $1/300$ th or even higher, provided by the 'Compur' Shutter fitted to many high-grade 'Kodaks'.

Size of picture taken with Popular 'Brownie'



A real full-size Kodak picture-taker for 6/-

POPULAR 'BROWNIE'

'How do they do it for the money?'

A natural question . . .

The answer is that only Kodak's immense manufacturing resources and the universal popularity of the camera itself make it possible to sell a genuine Kodak-made camera at such a remarkably low price.

'Nothing to remember, nothing to forget' has always been the 'Brownie' motto, and this one carries on the tradition. You just press a lever—that's all there is to it—and the picture's yours.

The Popular 'Brownie' takes pictures the popular size, $3\frac{1}{4}'' \times 2\frac{1}{4}''$, on Film No. 620 which you can get from Kodak dealers everywhere. Not only the usual snapshots but Time exposures also can be made, so that you can take pictures on bright days and dull ones, and indoors, too.

Two large viewfinders, one for upright pictures and one for horizontal ones, enable you to see your subject clearly and aim correctly before snapping.

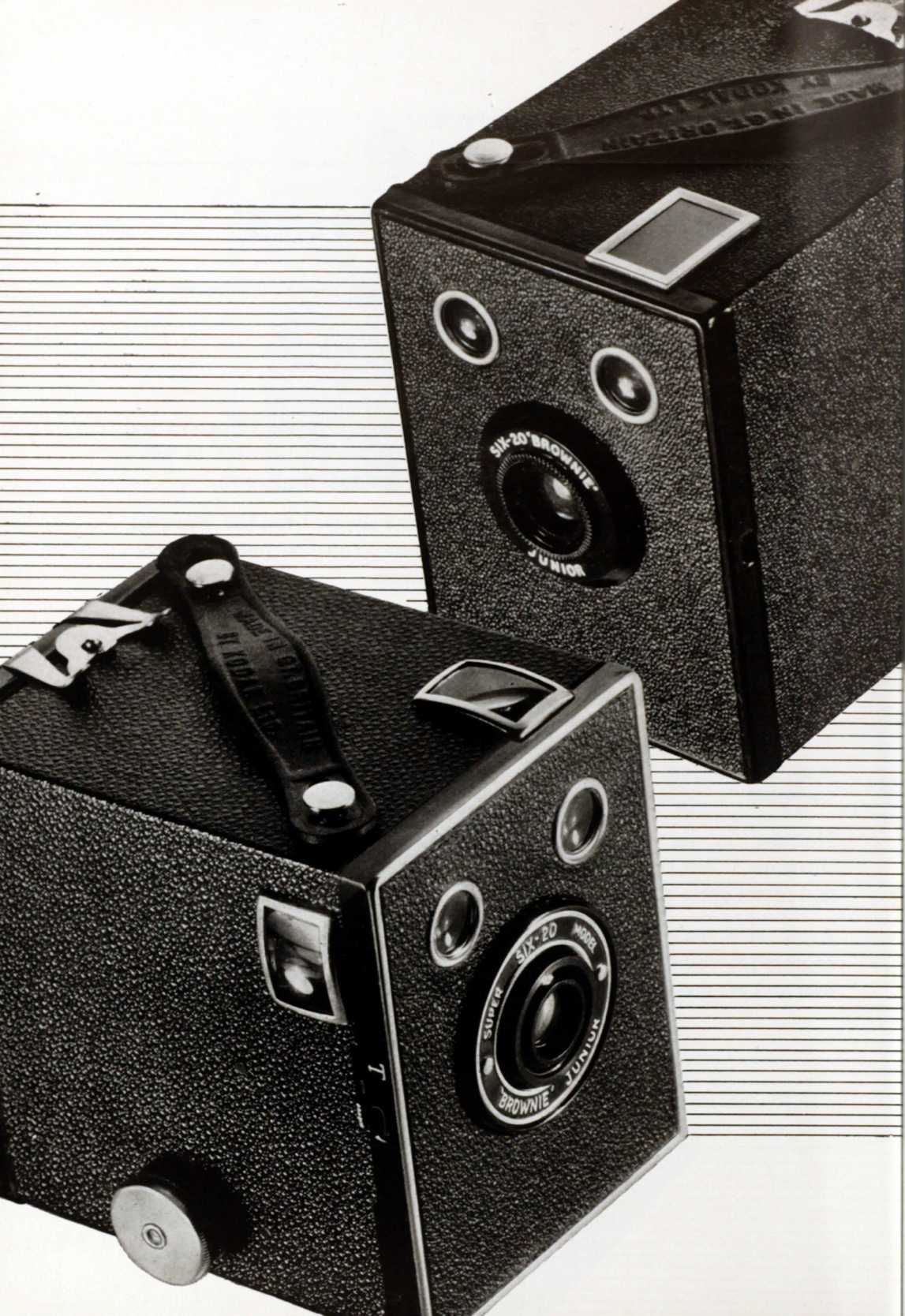
Nothing in its performance or appearance suggests the Popular 'Brownie's' low price; it is neatly covered with black grained leatherette and metal parts are nickel-plated or black enamelled.

After what we've said you will realise that this is a supremely good camera for youngsters, who can snap away with it to their heart's content and get good pictures from the start.

POPULAR 'BROWNIE' 6/-

For Kodak Film see pages 38-43

Carrying Cases see page 50



A matter of shillings will buy one of these genuine Kodak Cameras

There is such a wide selection of 'Brownies' at such closely graded price intervals that you can be sure of finding the exact model for your purpose at the price you want to pay. Here are two more that combine the utmost economy with real Kodak reliability.

SIX-20 'BROWNIE' JUNIOR

The Six-20 'Brownie' Junior has an all-metal body—a sturdy camera to take on holiday. The equipment includes two viewfinders; tested fixed focus Kodak lens; hinged back for speedy loading; shutter for snapshots and Time exposures. Picture size— $3\frac{1}{4}'' \times 2\frac{1}{4}''$.

SIX-20 'BROWNIE' JUNIOR **8/6**

SIX-20 'BROWNIE' JUNIOR Super Model

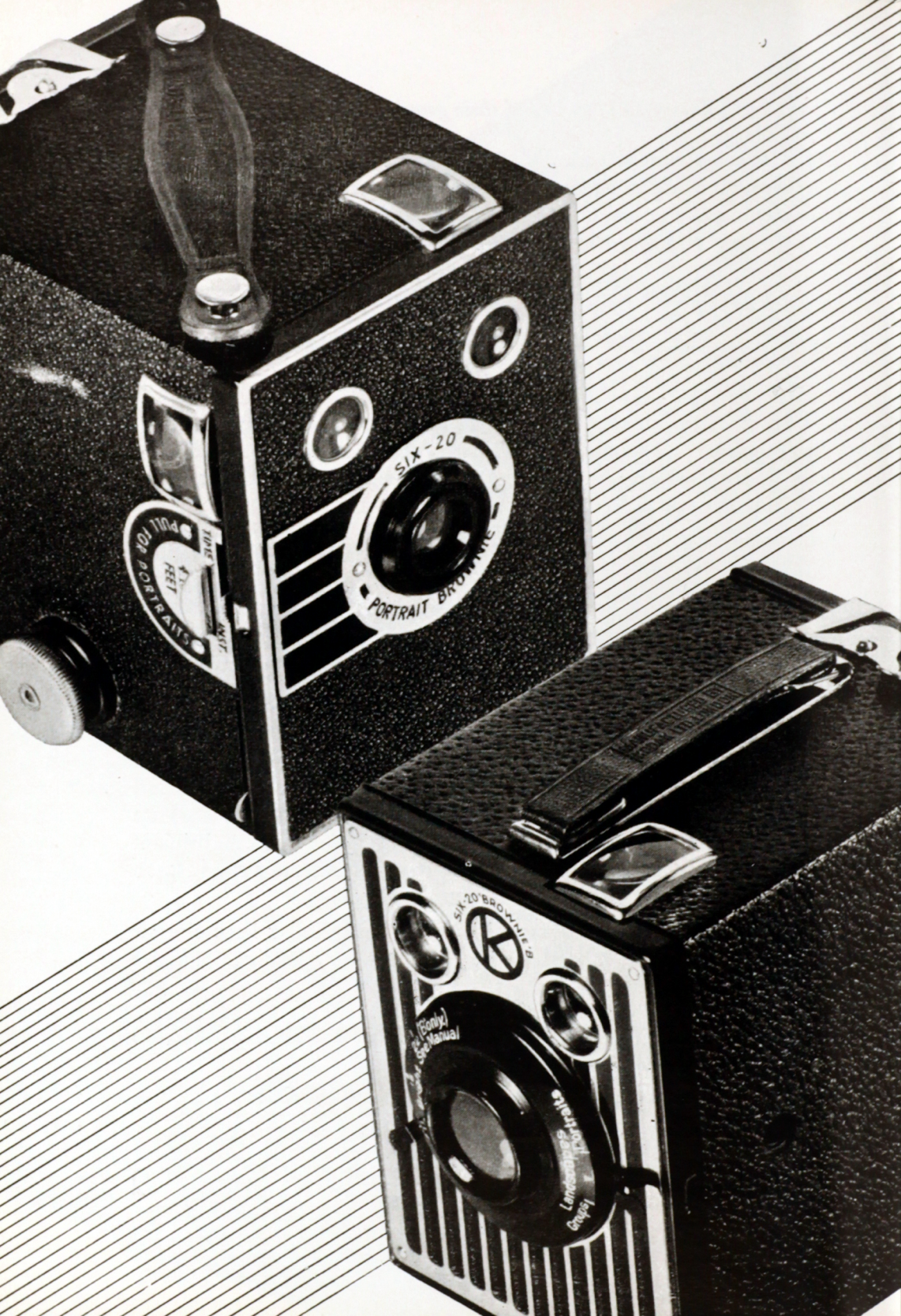
For a few shillings more you can treat yourself to this Super model. It looks smart, with its grained leatherette and polished nickel finish, and it incorporates some smart ideas, too. For example, the viewfinders are of a special convex type that give you an extra large, clear, brilliant image of what you are taking. The winding key consists of a round knob with a milled edge, extra easy for the fingers to grip.

All the usual 'Brownie' features, including tested Kodak lens, shutter for snaps and 'Time', hinged camera back for easy loading. Picture size— $3\frac{1}{4}'' \times 2\frac{1}{4}''$.

SIX-20 'BROWNIE' JUNIOR SUPER MODEL **12/6**

For Kodak Film see pages 38-43

Carrying Cases see page 50



Versatility! Simplicity!

SIX-20 PORTRAIT 'BROWNIE'

When you take snaps of people you naturally want their features to come out as clearly as possible. The best sort of portrait is a 'close-up', made with the camera only a few feet away from the subject. This kind of picture can be made with any 'Brownie' by using a supplementary Portrait Attachment. The Six-20 Portrait 'Brownie', however, makes it particularly easy to get this kind of picture.

The secret is a special built-in Portrait Lens. Pull a lever to bring this into operation—the camera is all set for close-ups. Push the lever back—you're instantly ready for ordinary groups and views.

Reliable shutter for snapshots and Time. Two brilliant viewfinders. And a smart finish in bright polished nickel, grained leatherette, and black glossy enamel. Picture size— $3\frac{1}{4}$ in. \times $2\frac{1}{4}$ in.

SIX-20 PORTRAIT 'BROWNIE' 17/6

SIX-20 'BROWNIE'

This is truly the King of the 'Brownies'; as versatile as many folding cameras, as easy to use as only a box 'Brownie' can be.

It will take close-ups at 4 feet, groups at 8 or 10 feet, landscapes at any distance, and get them all clear and sharp. You want to take a Portrait? Simply move a lever to the word 'Portrait' and snap. Similarly with the other kinds of subjects. The *f*11 lens has three 'stops' for different lighting conditions. It tells you on the camera which to use, and when.

The shutter gives snaps and Time exposures, and there are two brilliant viewfinders. As this out-of-the-ordinary camera clearly deserved something out-of-the-ordinary in the way of a finish, it has been given the bright, striped, smart looking front that you can see in the illustration on the opposite page. Picture size— $3\frac{1}{4}$ in. \times $2\frac{1}{4}$ in.

SIX-20 'BROWNIE' 21/-

For Kodak Film see pages 38-43

Carrying Cases see page 50

New-style cameras with a new-style finish



BABY 'BROWNIE'

There is just one lever on this camera; press that and you get your picture. Simplicity could hardly go further

There is a direct-vision viewfinder so that you can hold the camera up to the eye as you shoot, in the approved modern manner. This folds flat when not wanted. The tested Kodak Lens takes clear snaps all the way from 5 ft. to the horizon; no focussing. Latest type disc winding key with milled edge.

The finish is unusual (see picture). So is the price—a mere five shillings—which makes this the cheapest Kodak-made camera on the market.

BABY 'BROWNIE' 5/-

Kodak cameras march with the times. These two elegant little representatives of up-to-the-minute camera design are constructed of a recently invented moulded material which enables a modern and permanently smart finish to be given to a camera costing only a few shillings. They are absolutely simple, thoroughly efficient, and give crisp snaps the popular Vest Pocket size, $2\frac{1}{2} \times 1\frac{5}{8}$ in.

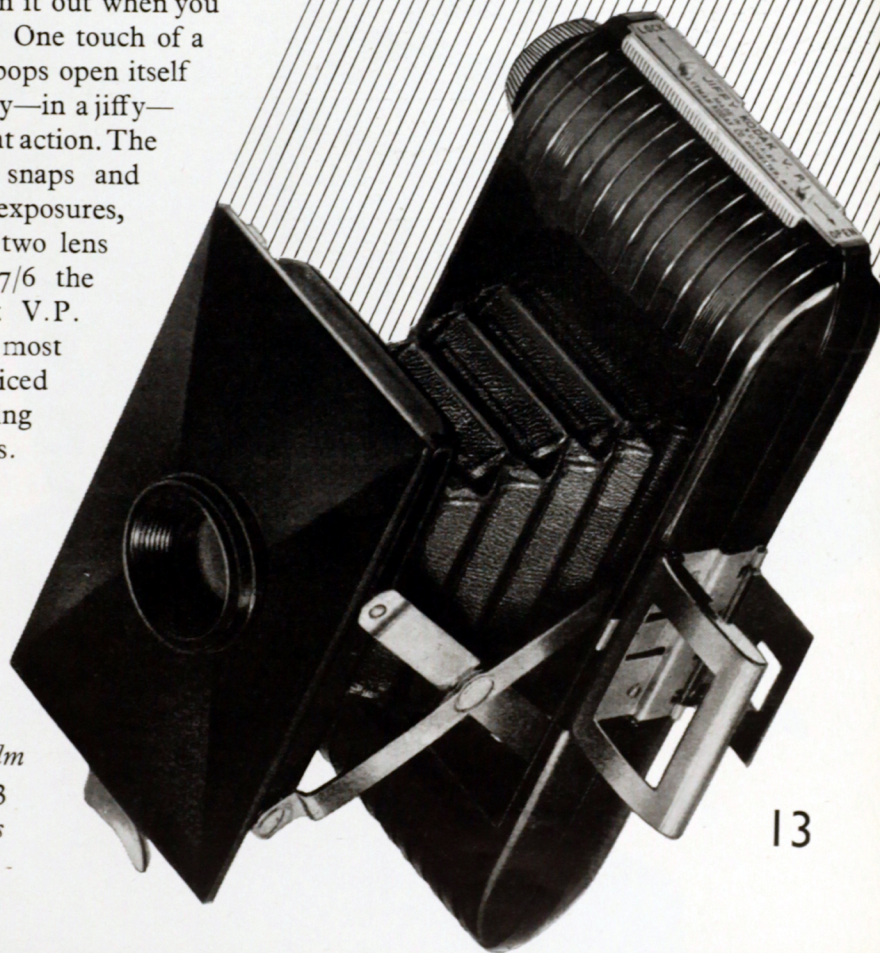
'JIFFY' KODAK V.P.

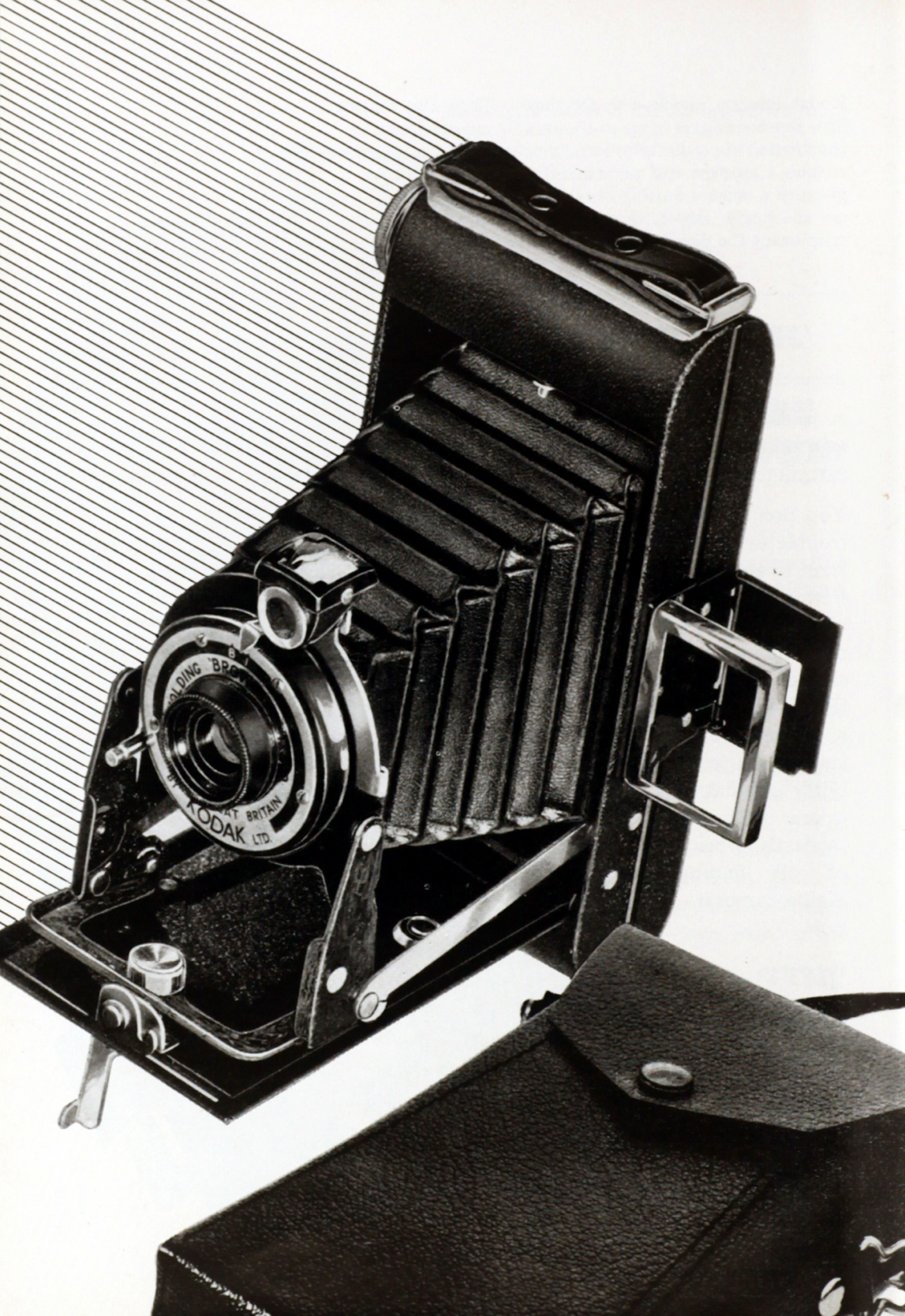
A folding camera, closing up neatly into a slim handful for convenience in carrying.

You don't even have to take the trouble to open it out when you want to snap. One touch of a button and it pops open itself—automatically—in a jiffy—ready for instant action. The shutter takes snaps and 'Brief Time' exposures, and there are two lens stops. At 27/6 the 'Jiffy' Kodak V.P. is one of the most modestly priced of all folding Kodak cameras.

'JIFFY'
KODAK
27/6

*For Kodak Film
see pages 38-43
Carrying Cases
see page 50*





SIX-20 FOLDING 'BROWNIE'

This is the model for everyone who wants—

- 1—A folding camera that's dead simple to use
- 2—That takes full size $3\frac{1}{4}'' \times 2\frac{1}{4}''$ snaps
- 3—That costs an absolute minimum
- 4—That has up-to-the-minute features

The Six-20 Folding 'Brownie' qualifies on all these counts.

It has a tested Kodak lens that gives sparkling pictures from 8 feet up to any distance (a Portrait Attachment—extra—is available for 'close-ups'). The shutter gives 'Brief Time' exposures as well as ordinary snaps.

There is no focussing—or indeed anything else—to puzzle the beginner. Even the simple operation of sighting the subject has been made extra easy by the provision of two viewfinders—a 'direct-vision' viewfinder for use at eye-level (handy in crowds or when there's some other obstruction), and a reflex viewfinder for use at waist-level (convenient when snapping small children, etc.). The camera can be obtained with the eye-level finder only, if desired.

Loading is easy. The back is hinged to the body of the camera, so that there are no loose parts, and the spoolholder swings up clear of its surroundings, which enables you to pop in a new film without any fumbling. When the camera is closed, a spring plate keeps the film flat and helps you to get pictures that are sharp and clear all over.

You'll like the swift, silent way the camera opens—a single movement does it; and the equally neat way it folds up again at a touch on a button.

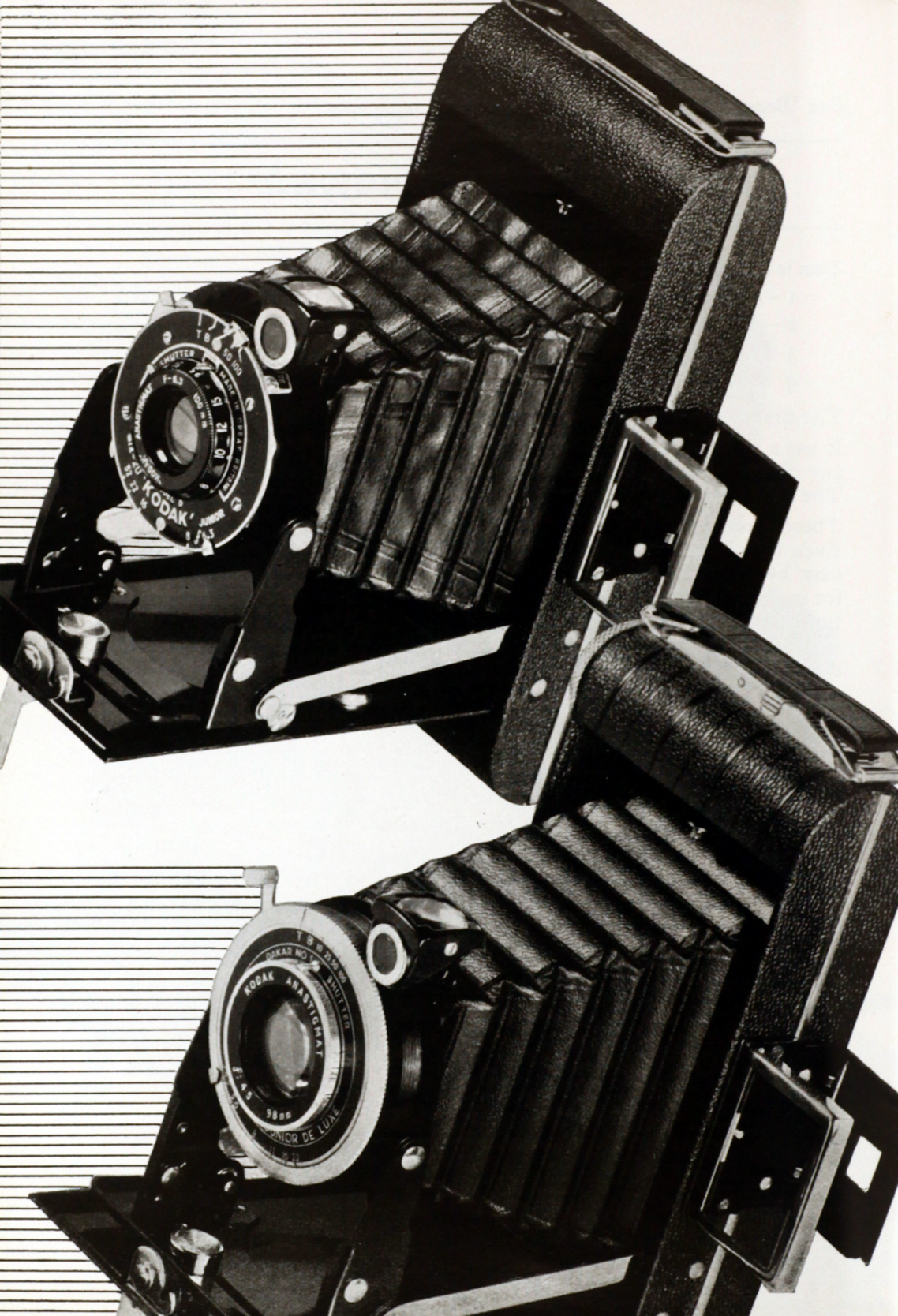
The Six-20 Folding Brownie is a sturdy job—all metal construction. It is a good-looker, too, with its grained leatherette, black crystalline and polished nickel finish.

At 27/6 or 30/- the Folding 'Brownie' is even more of a bargain than it sounds, because the price includes both camera and carrying case—a smart black grained case complete with shoulder strap.

SIX-20 FOLDING 'BROWNIE' with Carrying Case

With two viewfinders . 30/- With one viewfinder (eye-level type) . 27/6

For Kodak Film see pages 38-43



SIX-20 'KODAKS' JUNIOR

A good 'all-rounder' but not expensive, competent but not complicated—that is the sort of camera thousands of people want. Which is why we find so many of our customers plump for the Six-20 'Kodak' Junior.

Check over these features—

Swift opening and closing movements; hinged back and lift-up spool chamber for easy loading; reflecting viewfinder reversible for upright and horizontal snaps (eye-level viewfinder in addition on $f6\cdot3$ and $f4\cdot5$ models); sliding cover for red window so that the fastest panchromatic (red-sensitive) films can be used in safety. In short, every device that makes good pictures easy to come by.

A great feature of this series is the wide range of Kodak lenses available, from medium speed up to very fast; $f11$, $f7\cdot7$, $f6\cdot3$ and, on the De Luxe Model, $f4\cdot5$. (See pages 4 and 5 for explanation.) Any of these lenses will give you first-class snaps, clear, sharp, and brilliant, but as you go up the scale your picture-taking scope naturally gets bigger, until with the $f4\cdot5$ lens you can go on snapping freely through the seasons, take indoor subjects, pictures at night with shorter exposures, etc. All lenses focus down to 5 feet except the $f4\cdot5$, which focusses down to as close as $3\frac{1}{2}$ feet for head-and-shoulder close-ups.

The 'Kodon' Shutter gives three snapshot speeds— $1/25$ th, $1/50$ th, and $1/100$ th second, in addition to Time and Brief Time. The 'Dakar' Shutter has an extra 'slow-snapshot' speed of $1/10$ th second.

The Six-20 'Kodak' Junior *De Luxe* is a 'luxury' model at far below 'luxury' prices. In addition to having the advantage of fine, fast lenses, $f6\cdot3$ or $f4\cdot5$, it possesses a direct-vision viewfinder as well as one of the reflecting type, so that you can shoot from eye or waist level. And it has a super finish in grained and figured leatherette and polished nickel.

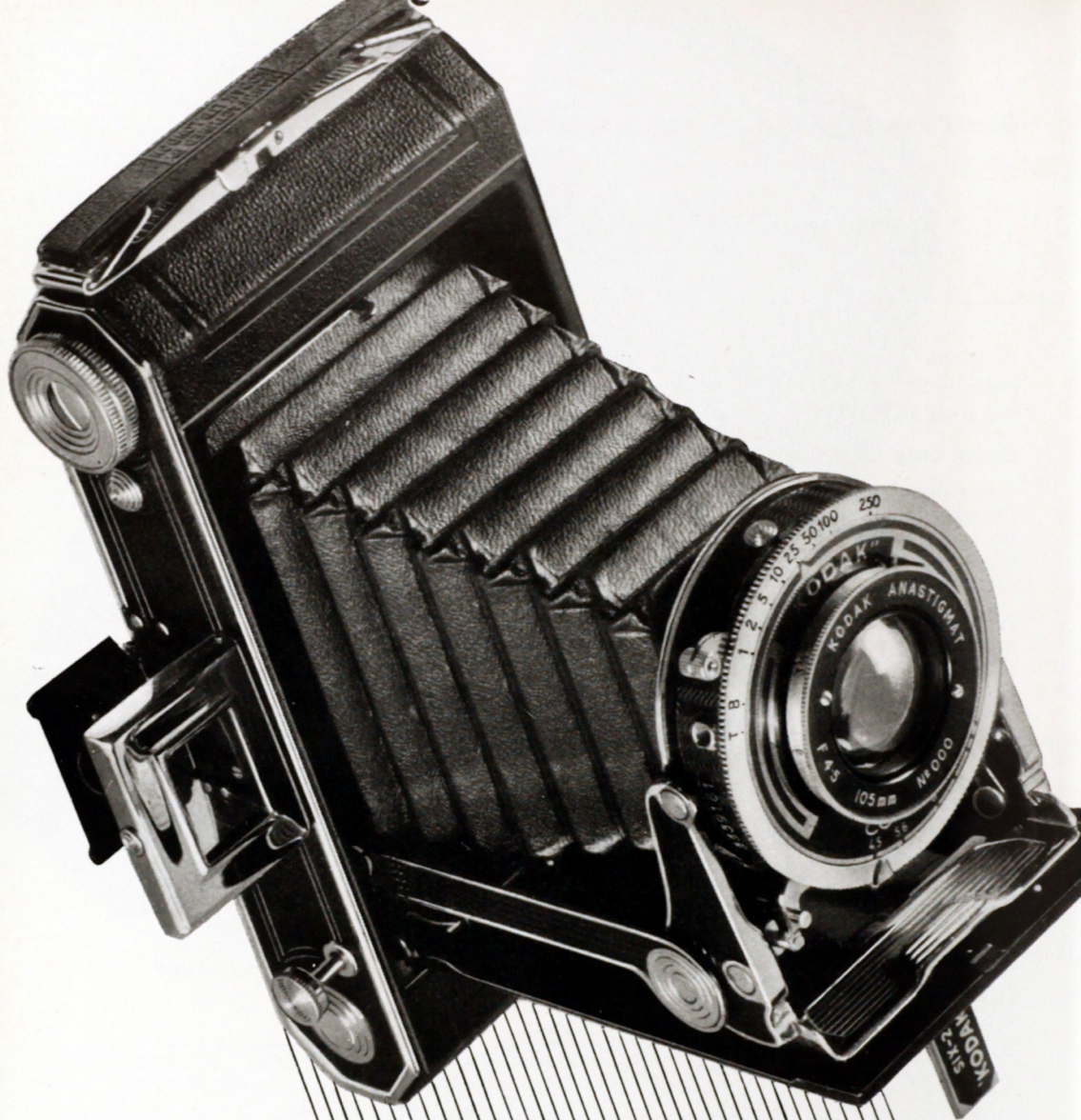
SIX-20 'KODAK' JUNIOR

With 3-speed 'Kodon' Shutter and 'Twindar' $f11$ Lens	£1 19 6
With 3-speed 'Kodon' Shutter and Kodak Anastigmat $f7\cdot7$ Lens	£2 5 0
With 3-speed 'Kodon' Shutter and Kodak Anastigmat $f6\cdot3$ Lens	£2 15 6

SIX-20 'KODAK' JUNIOR DE-LUXE

With 3-speed 'Kodon' Shutter and Kodak Anastigmat $f6\cdot3$ Lens	£3 5 0
With 4-speed 'Dakar' Shutter and Kodak Anastigmat $f4\cdot5$ Lens	£4 15 0

For Kodak Film see pages 38-43 Carrying Cases see page 50



SIX-20 'KODAK' B

Many recent, cunning devices for making good pictures easy to get have been incorporated in this splendid camera. For example—

Raise the camera up to your eye, ready to shoot, and you find that instead of the exposure button being in front, on the shutter, it comes most accommodately under your right forefinger on the body of the camera itself, where you can press it smoothly, easily, effortlessly, while holding the camera firmly in a two-handed grip.

Any of the four fast lens and shutter combinations (see below) are capable of tackling dull-day and quick-action shots. The O.P.S. and Compur shutters incorporate a delayed-action device so that you achieve the seemingly impossible by taking a picture and being in it yourself. Both lenses focus down to as close as $3\frac{1}{2}$ feet (for head-and-shoulder close-ups) by a simple turn to left or right.

The optical eye-level viewfinder flicks open at a touch; special lenses in the front and rear 'sights' give an exceptionally clear, well-defined view of your subject.

The locking catch under the carrying handle is made so that it cannot be brushed open accidentally. It secures the hinged camera back, which opens to reveal two spool-holders that lift up for the easy insertion of film.

Lens and shutter jump into position automatically in one movement as you open the front of the camera. They fold themselves away with the same unobtrusive alacrity at the touch of a thumb plate on the camera bed. A sliding safety cover over the red film window makes this camera safe for the fastest kind of Kodak Film, including Super Sensitive Panchromatic. Two tripod sockets are fitted.

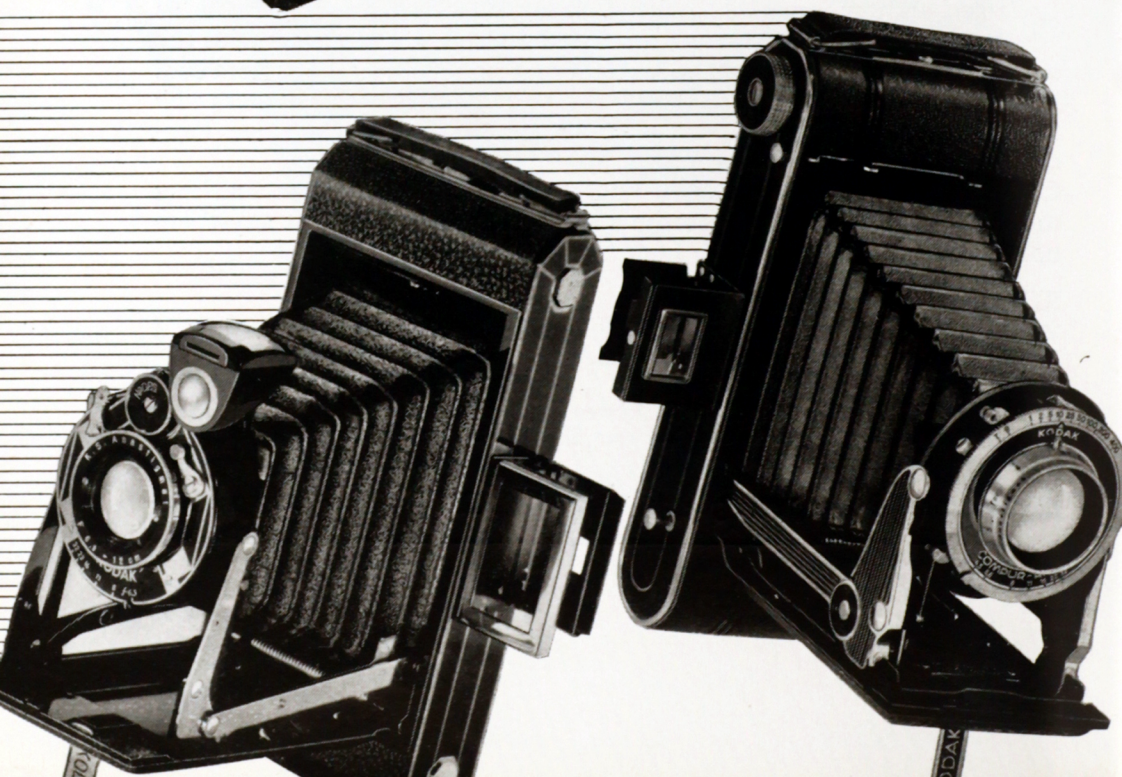
Chromium-plate, black enamel, and grained leather put the finishing touch to as smart and as versatile a camera as you can get at anywhere near the price.

SIX-20 'KODAK' B

With Kodak Anastigmat f6.3 Lens and O.V. Shutter (3-speed)	£4 17 6
With Kodak Anastigmat f6.3 Lens and O.P.S. Shutter (3-speed—delayed action)	£5 5 0
Kodak Anastigmat f4.5 Lens and O.P.S. Shutter (3-speed—delayed action)	£6 15 0
Kodak Anastigmat f4.5 Lens and Compur Shutter (8-speed—delayed action)	£7 17 6

For Kodak Film see pages 38-43

Carrying Cases see page 50



If you prefer BIG pictures—your camera is here

SIX-16 'BROWNIE' & 'KODAKS'

Ranging from a simple 'Brownie' to an advanced 'Kodak' Special, these cameras have one feature in common: they all take artistically proportioned panel-shaped pictures with the really sizeable dimensions of $4\frac{1}{4}$ in. \times $2\frac{1}{2}$ in.

SIX-16 'BROWNIE' (illustrated at top of opposite page)

Adjustable 'Diway' Lens gives clear pictures of subjects near or far. Snapshots and Time exposures. Two lens stops; two viewfinders. Unusually smart finish . 21/-

SIX-16 'KODAKS' JUNIOR

Similar to the Six-20 'Kodaks' Junior described on page 17, except that no eye-level viewfinder is fitted.

With 'Twindar' (f11) Lens and 3-speed 'Kodon' Shutter	£2 7 6
With Kodak Anastigmat f6.3 Lens and 4-speed 'Diodak' Shutter	£3 3 0

SIX-16 'KODAKS' (illustrated bottom left of opposite page)

Similar to the Six-20 'Kodaks' described on page 19, except that the Six-16 models have no built-in shutter release or optical eye-level viewfinder.

With Kodak Anastigmat f6.3 Lens and 3-speed O.V. Shutter	£4 5 0
With Kodak Anastigmat f6.3 Lens and 3-speed O.P.S. Shutter (delayed action)	£4 15 0
With Kodak Anastigmat f4.5 Lens and 3-speed O.P.S. Shutter (delayed action)	£5 15 0
With Kodak Anastigmat f4.5 Lens and 8-speed 'Compur' Shutter (delayed action)	£8 0 0

SIX-16 'KODAK' SENIOR

Offers the advantage of a built-in shutter release on side of camera, plus latest refinements, including optical eye-level viewfinder. Kodak Anastigmat f4.5 Lens, focussing $3\frac{1}{2}$ feet to infinity. 'Kodamatic' shutter has 5 speeds up to 1/200th second and delayed action device £9 9 0

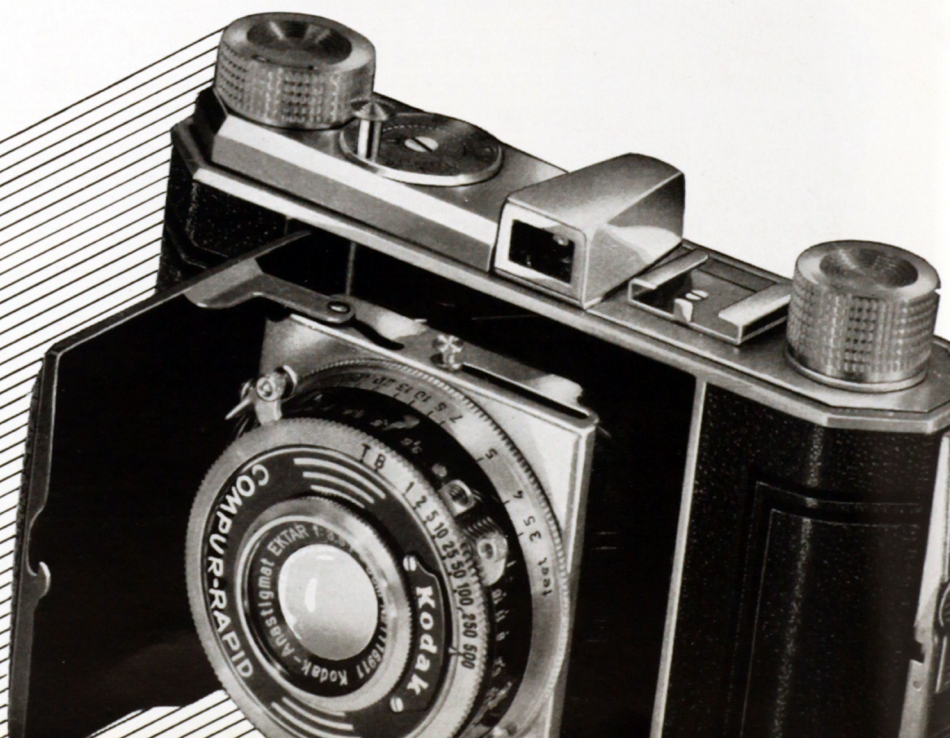
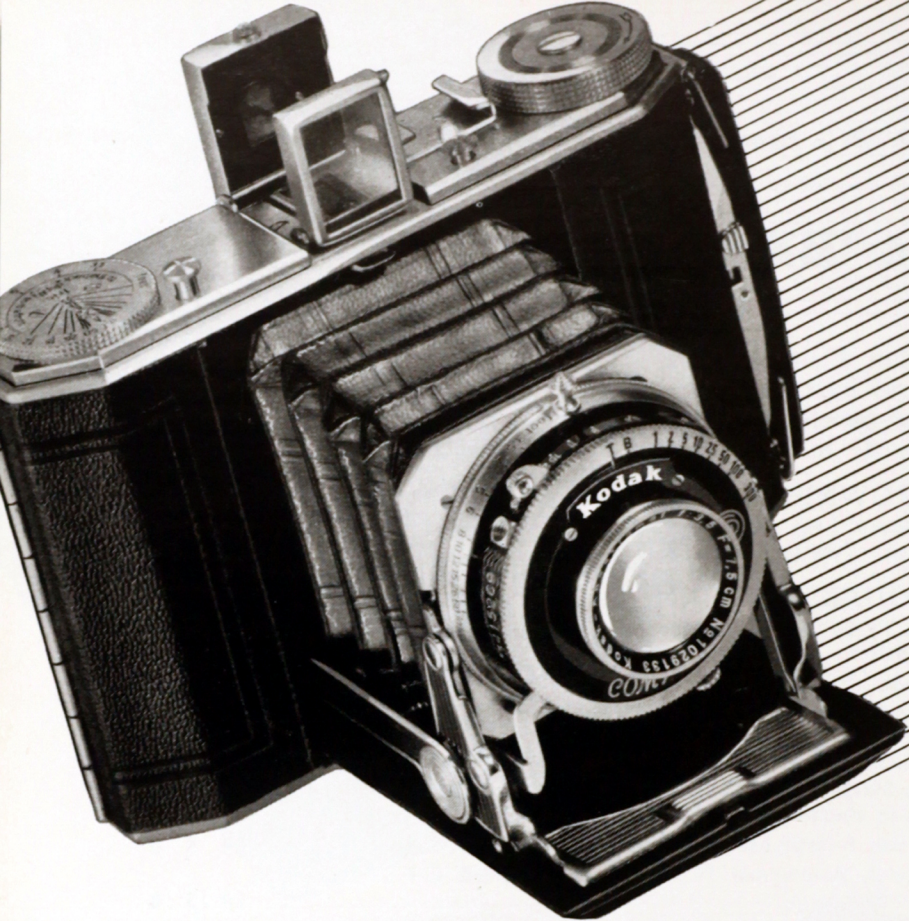
SIX-16 'KODAK' SPECIAL (illustrated bottom right of opposite page)

Finest of all these large-picture cameras, with all the most advanced picture-taking features, including built-in shutter release on camera body, optical eye-level viewfinder, Kodak Anastigmat f4.5 Lens, Compur-Rapid Shutter with 8 speeds up to 1/400th second.

Aluminium construction, pin-seal grain leather, and chromium and black lacquer finish £14 10 0

For Kodak Film see pages 38-43

Carrying Cases see page 50



SIX-20 DUO 'KODAK'

Compact, neat, the Six-20 Duo 'Kodak' gives album sized pictures, $2\frac{3}{4} \times 1\frac{5}{8}$ " (which can, of course, be enlarged up to any size). You can fire off sixteen pictures in succession before having to put in a new film—specially convenient for travellers and holiday-makers.

Choice of fast $f4.5$ or $f3.5$ Anastigmat Lenses in 4-speed Kodak shutter or 8-speed 'Compur' Shutter. Built-in shutter release on body of camera; optical eye-level viewfinder; depth of focus scale; built-in holder for Kodak Pocket Rangefinder. Camera opens in one movement—closes in one movement. Beautiful chromium finish.

Six-20 Duo 'Kodak' with

Kodak Anastigmat $f4.5$ lens and 4-speed Kodak Shutter	.	.	£7 10 0
Kodak Anastigmat $f4.5$ lens and Compur Shutter	.	.	£8 17 6
Kodak Anastigmat $f3.5$ lens and Compur Shutter	.	.	£10 10 0
Zeiss Tessar $f3.5$ lens and Compur Shutter	.	.	£13 10 0
Zeiss Tessar $f3.5$ lens and Compur Rapid Shutter	.	.	£14 10 0

'RETINA' I

In a mere $4\frac{3}{4} \times 3 \times 1\frac{1}{2}$ inches the 'Retina' manages to include a high-speed $f3.5$ Anastigmat lens, a Compur or Compur-Rapid shutter, with speeds up to $1/3000$ th or $1/500$ th respectively, a direct-vision optical viewfinder, an exposure counter, a depth of focus scale, and enough film for 36 exposures at a single loading. Its pictures ($1\frac{1}{2} \times 1$ ") are sharp and crisp, and enlarge up beautifully. Certain models have the extra convenience of a built-in shutter release on the body of the camera (see below).

The 'Retina' uses Kodak 35 mm. Film which is available in three grades for black-and-white pictures and two for colour (see pages 40-43 for details).

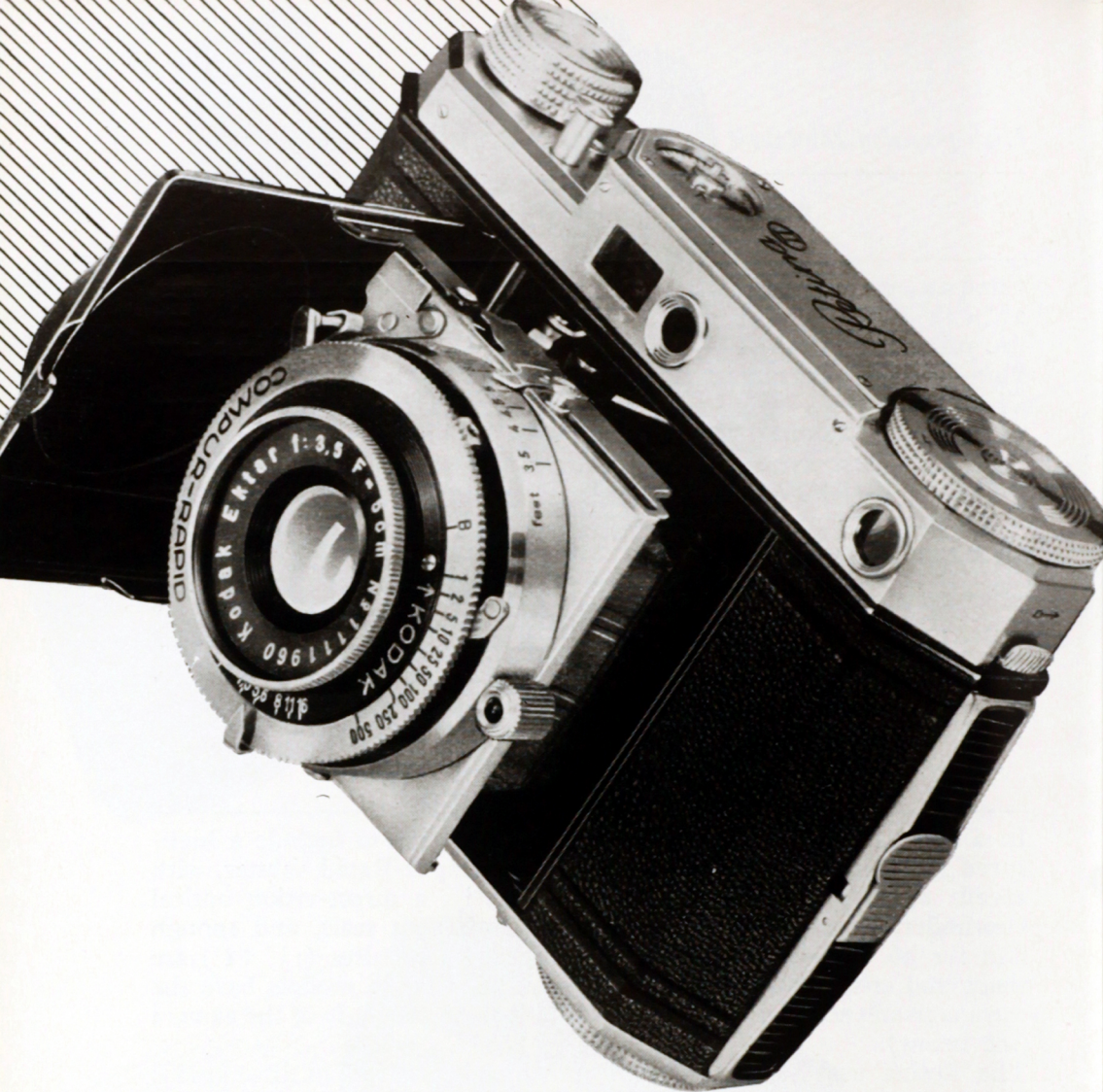
In short, the 'Retina' is the camera for enterprising amateurs who have to study economy.

'Retina' (chromium-finish model) complete with Ever-Ready Leather Case

Kodak 'Ektar' $f3.5$ lens and Compur-Rapid Shutter	.	.	£12 0 0
--	---	---	---------

With built-in shutter release

Kodak 'Ektar' $f3.5$ lens and Compur Shutter	.	.	£12 0 0
Kodak 'Ektar' $f3.5$ lens and Compur-Rapid Shutter	.	.	£13 0 0
Zeiss Tessar $f3.5$ lens and Compur-Rapid Shutter	.	.	£15 0 0



Kodak's finest 35 mm. camera

'RETINA' II

Kodak experts 'let themselves go' in designing this camera. The result, you may guess, is a super instrument: precision, power, convenience *plus . . .*

The 'Retina' II offers you the choice of three extremely fast lenses: $f3.5$, $f2.8$, $f2$. One of these, in conjunction with the 'Compur-Rapid' Shutter with its 9 automatically timed speeds from 1 second up to a flashing 500th, assures you easy command of the most difficult subjects. The shutter is released by pressing a small knob on the body of the camera itself, thus ensuring velvet smooth operation.

The 'Retina' II cuts the guesswork right out of focussing. A built-in rangefinder is coupled to the lens in such a way that you find the range of your subject and focus the camera simultaneously and automatically. (Focussing is adjustable from 'infinity' down to $3\frac{1}{2}$ feet).

The best of us sometimes forget whether we have wound on the film after the previous exposure. But the 'Retina' II remembers! Film winder and shutter are ingeniously connected so that it is impossible to make an exposure unless the film has first been wound on; moreover, when that has been done you cannot wind the film on *again* until an exposure *has* been made. In this way you are permanently safeguarded against the annoyance of 'double-exposures' and 'blanks'. Double-exposures for trick photography can, however, be made by using the release-trigger on the shutter itself, which is not locked by the automatic mechanism.

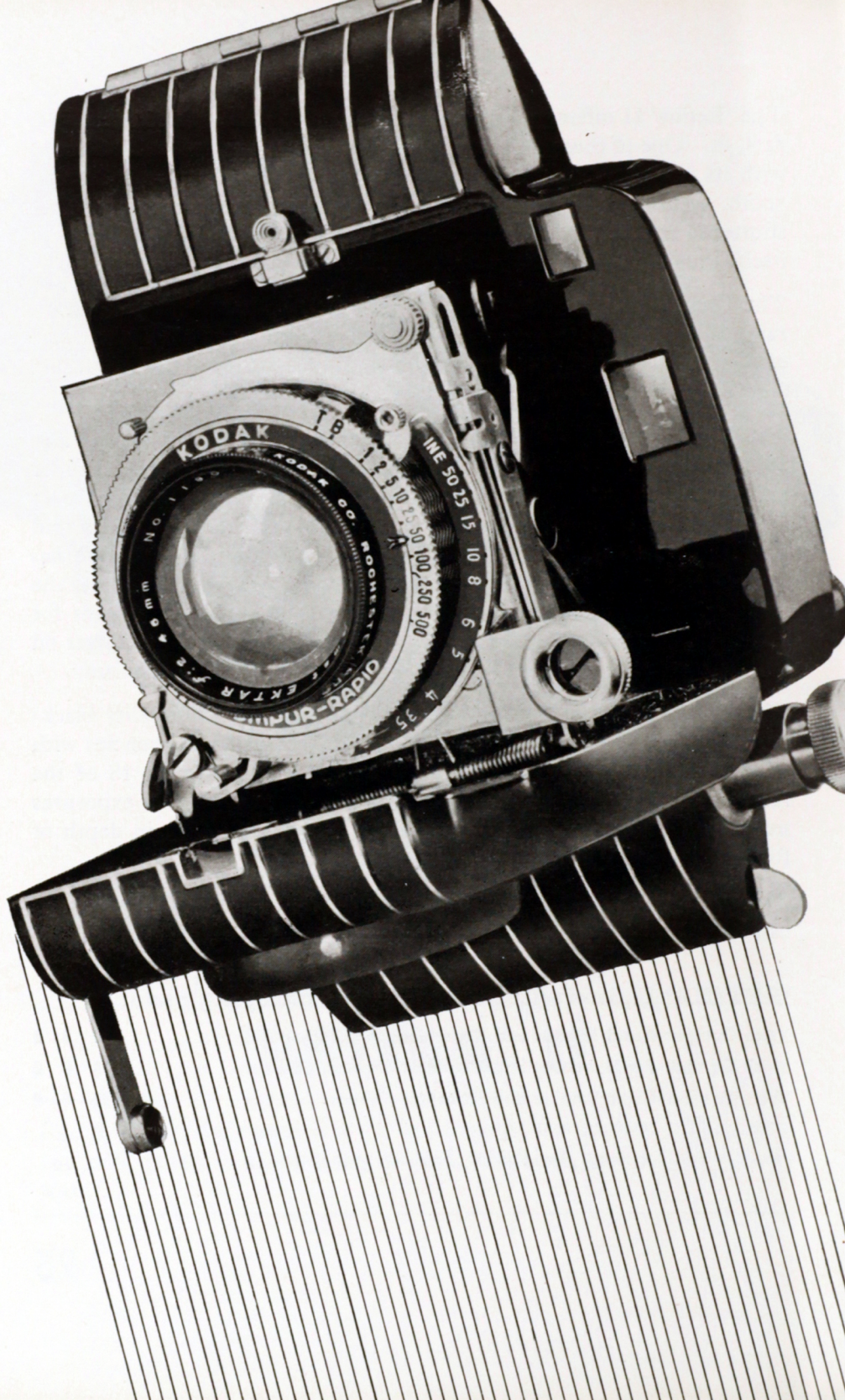
The 'Retina' II uses Kodak 35mm. Film, takes beautiful quality black-and-white pictures or glowing 'Kodachrome' colour transparencies with equal ease, and holds enough film for 36 of the former or 18 of the latter. An automatic counter keeps track of the number of exposures made. Other features: optical eye-level viewfinder; built-in depth of focus scale. Size of camera closed: $4\frac{3}{4}'' \times 3\frac{1}{4}'' \times 1\frac{5}{8}''$.

And we mustn't forget the elegance of the chromium finish, which we can only hint at in the illustration.

'RETINA' II, including Ever-Ready carrying case:

With Compur-Rapid Shutter and Kodak 'Ektar' $f3.5$ Lens . . .	£20 0 0
With Compur-Rapid Shutter and Schneider 'Xenon' $f2.8$ Lens . . .	£25 0 0
With Compur-Rapid Shutter and Schneider 'Xenon' $f2$ Lens . . .	£30 0 0

For Kodak Film see pages 40-43



Watch-like precision and super versatility distinguish 1938's most unusual camera

KODAK BANTAM SPECIAL

A new-style camera; so much is clear at a glance. And the Kodak Bantam Special does not belie its looks. Wherever exciting pictures lurk—in the sports field, on the racing track, in the theatre, by your own fire-side—this superbly equipped little instrument will get them with an ease that will astonish you.

To begin with, the Bantam Special has a six-element super-corrected Kodak 'Ektar' Lens with the formidable aperture of $f2$. This goes on getting brilliant pictures under lighting conditions that render all ordinary lenses helpless. These pictures, microscopically sharp, enlarge superbly.

Next in the array of super equipment comes a Compur-Rapid Shutter, 9 automatically timed speeds, from 1 second up to a lightning $1/5000$, co-operating ably with the super rapid lens in making difficult shots easy.

No need to guess how far off your subject is; the built-in rangefinder tells you. The lever that operates the rangefinder is coupled to the lens; as you bring the subject into range, from 'infinity' down to 3 feet, it automatically focusses the camera for you.

All this precision equipment is trimly housed in a die-cast glossy black aluminium body measuring only $4\frac{7}{8}'' \times 3\frac{1}{8}'' \times 1\frac{13}{16}''$ (less than the size of your hand), smoothly shaped for convenience in operating and carrying. When the camera is closed complete protection from dirt, dust and injury is afforded to all vital parts including the rangefinder.

The Kodak Bantam Special loads with a special 8 exposure spool of Kodak Film (No. 828)—a point of appeal for those who want a high-grade miniature camera of less than the usual 36-exposure capacity.

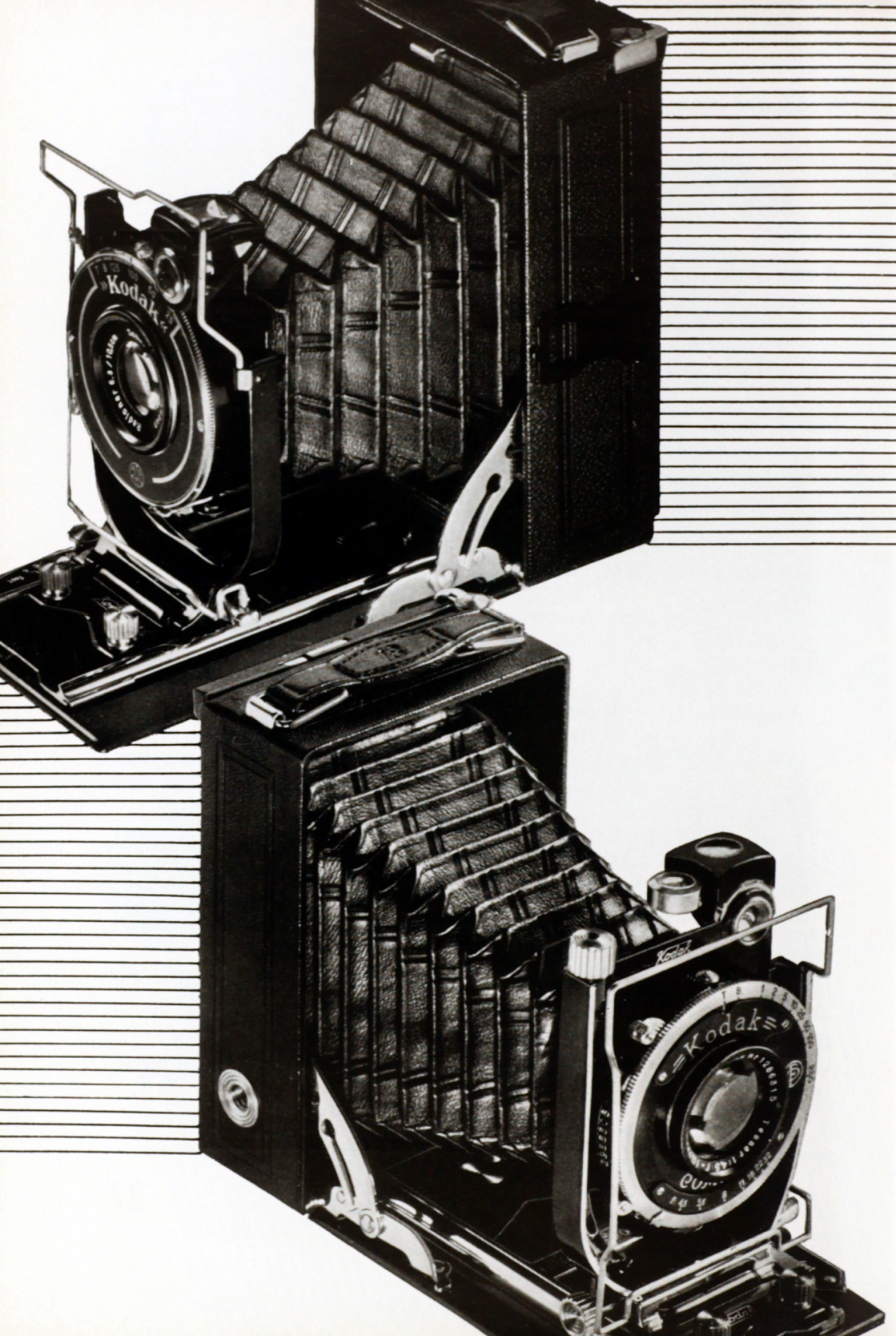
Not least of the Bantam Special's attractions is the fact that it takes gorgeous full-colour 'Kodachrome' transparencies by daylight or artificial light, as well as super quality black-and-white pictures.

Other features: film centering and locking device; flush-type sliding film window; hinged back and film pressure plate; tripod socket for horizontal position; new closing device prevents possible damage to lens.

KODAK BANTAM SPECIAL

With Kodak 'Ektar' $f2$ lens and 'Compur-Rapid' Shutter. Complete in special ever-ready carrying case £28 10 0

For Kodak Film see pages 40-43



Old hands say 'These are the cameras WE like!'

Able to use film packs or plates, and having such advantages as ground-glass focussing and rising and falling front movements, these two cameras are examples of traditional photographic craftsmanship at its best, and are widely popular with 'serious' workers.

The 'ANCA'

An all-round instrument at a very moderate price. Equipment includes rising and falling front; two viewfinders—a direct-vision wire frame finder and a reflecting finder for use at waist level; ground glass focussing screen; two tripod sockets; $f6.3$ or $f4.5$ anastigmat lens; 4-speed Pronto or 8-speed 'Compur' Shutter, both fitted with a delayed action device for self-photography. Focussing by thumb-operated radial lever down to four feet on No. 14 model, six feet on No. 28 model

	'Anca' No. 14	'Anca' No. 28
	$3\frac{1}{2}$ in. \times $2\frac{1}{2}$ in.	9×12 cm. or $4\frac{1}{4}$ in. \times $3\frac{1}{8}$ in.
With Schneider 'Radionar' $f6.3$ Lens and Pronto Shutter .	£5 15 0	£8 0 0
With Schneider 'Xenar' $f4.5$ Lens and 'Compur' Shutter .	£10 0 0	£12 0 0
Prices include 2 Universal Cut Film and Plate Holders		

The 'RECOMAR'

A camera to gladden the heart of the expert! Every feature and fitting for architectural, landscape and other advanced photography is here, including a rising, falling and swing front, worm-screw operated; frame viewfinder for eye-level use, reflecting viewfinder for waist-level use; spirit level attached to reflecting viewfinder; rigid U-shaped metal front; rack and pinion focussing with locking action; double extension bellows and baseboard, which allow of copying natural size; ground glass focussing screen shielded by spring-out hood; two tripod sockets. Powerful lens and shutter combination — Schneider $f3.8$ or Zeiss 'Tessar' $f4.5$ lens in 8-speed Compur shutter, 8 speeds up to $1/250$ th, and delayed action device. Handsome leather finish.

	'Recomar' No. 18	'Recomar' No. 33
	$3\frac{1}{2}$ in. \times $2\frac{1}{2}$ in.	9×12 cm. or $4\frac{1}{4}$ in. \times $3\frac{1}{8}$ in.
With Schneider 'Xenar' $f3.8$ Lens and Compur Shutter .	£11 17 6	£14 15 0
With Zeiss Tessar $f4.5$ Lens and Compur Shutter .	£12 2 6	£14 15 0
Prices include 3 Universal Cut Film and Plate Holders and Cable Release		

For Kodak Film Packs and Cut Films see page 44 . Carrying Cases 50



Life—Action—Colour. You get them all with

CINE-'KODAK'

The exciting fast-growing hobby that breaks new records for fun and thrills; as easy as snapshotting; need cost little more

To press a button and get a snap—that is one of those everyday marvels we take for granted.

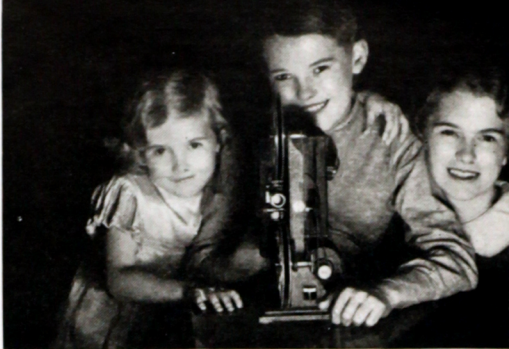
But to press a button and get a *movie*—not simply a single snap of your friend in this position or that but a living record of every smile and action and gesture just as you saw them—why, that is well on the way to being a first-class miracle. Happily it is a miracle which you can perform with amazing ease—with a Cine-'Kodak'.

Just as the 'Kodak' took the mystery and expense out of ordinary photography and made it plain sailing for the man in the street, so the CINE-'Kodak' brings you this grand new, brand new thrill of personal movies at low cost and with press-the-button ease.

The Cine-'Kodak' doesn't stop at movies in black-and-white, either. Simply by loading up with a special film called 'Kodachrome' you can enjoy the added excitement of making movies in gorgeous full colour—again, simply by pressing a button.

In this catalogue there is not room to include more than the briefest details of Cine-Kodak Apparatus (see the next six pages). We shall be glad to give you interesting descriptive literature on the subject—better still, to arrange for a personal demonstration. For we can promise you, if you've never seen Cine-Kodak home movies before, you've got a big treat coming.

How a remarkable film invention made Home Movies possible for YOU



Up to about 14 years ago, not much movie-making was done outside the big film studios. The expensive film and the large and cumbersome apparatus necessary put this hobby—fascinating as it obviously was—out of reach of all but a few wealthy enthusiasts.

Then Kodak had a brilliant idea. They devised an entirely new, economical kind of movie film—Cine-Kodak Film—only 16-mm. wide* (professional film is 35-mm. wide). They made it *safety* film so that it could be used anywhere without danger from fire. For use with this film they constructed correspondingly smaller cameras and projectors. But that was not all.

The professional cinematographer shoots on one film and prints the negative so obtained on another. Kodak devised a process by which the negative image obtained on Cine-Kodak Film could be 'reversed' by chemical means into a positive image, so that only one film is used for both taking and showing. That was the second big economy feature of Cine-Kodak Film.

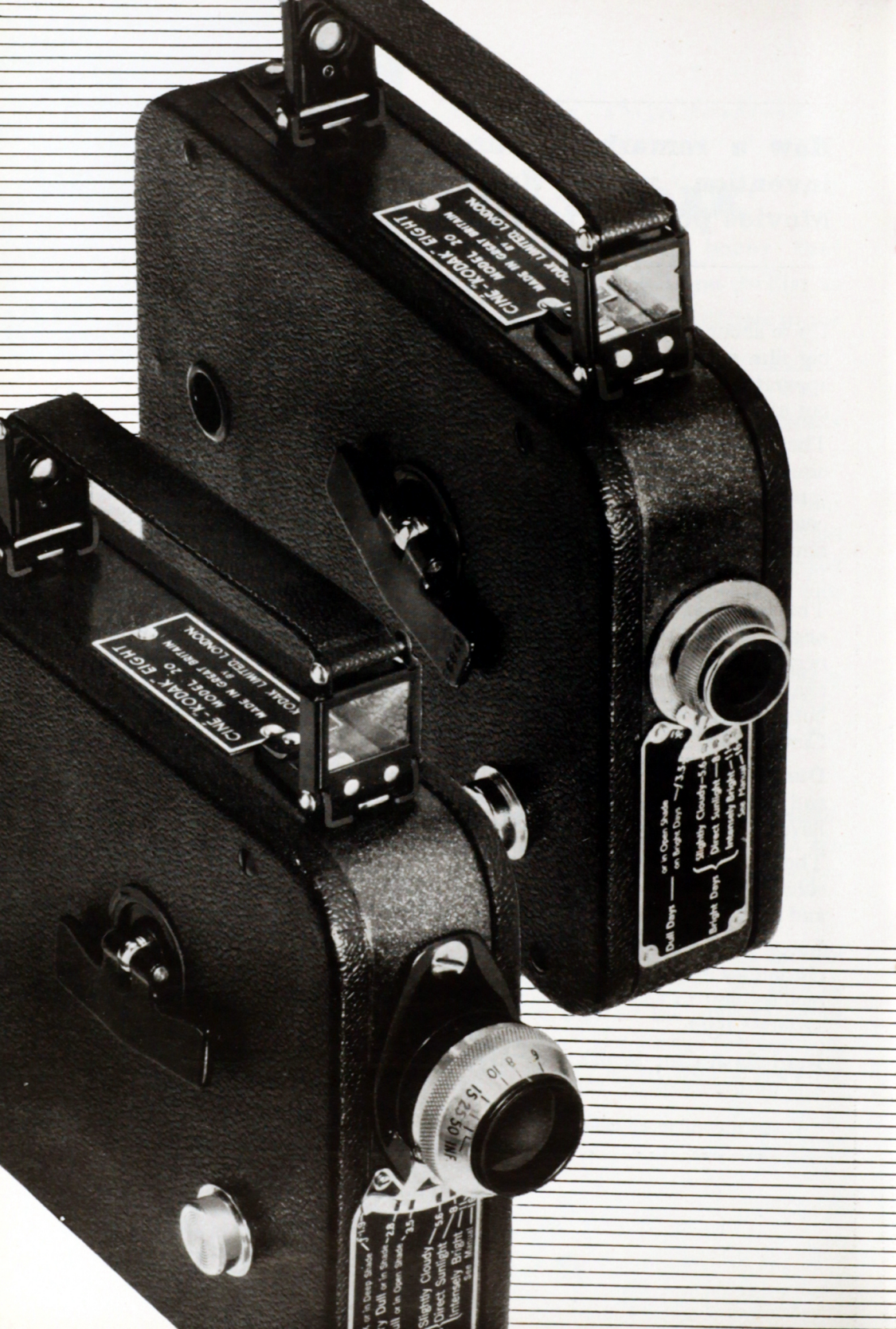
During this Cine-Kodak reversal process, an 'electric eye' scans the film and most ingeniously compensates for any exposure errors that may have been made during shooting.

The reversal process, too, offers the best assurance of clear sparkling screen pictures, because it removes the larger grains of silver emulsion and leaves the finer ones to make up the final image.

Latest and most brilliant of Cine-Kodak Film inventions is 'Kodachrome', a film which you load up and use like any other film but which enables you to shoot in magnificent full living colour, by daylight or artificial light.

Read about Cine-Kodak cameras and 'Kodascope' home movie projectors on the following pages.

* Later, the still more economical 'Eight' film was introduced; see page 33.



CINE-KODAK EIGHT
MODEL 50
MADE IN GREAT BRITAIN
KODAK LIMITED LONDON

CINE-KODAK EIGHT
MODEL 50
MADE IN GREAT BRITAIN
KODAK LIMITED LONDON

Dull Days — or in Open Shade — on Bright Days — $f/3.5$
Slightly Cloudy — $f/5.6$
Direct Sunlight — $f/8$
Bright Days — Intensely Bright — $f/16$
Sun Vertical

A or in Deep Shade $f/16$
Slightly Cloudy
Direct Sunlight
Intensely Bright
Sun Vertical

CINE-'KODAKS' EIGHT

'Home movies are such good fun that it's a thousand pities more people can't join in.' So, in effect, said the Kodak people a few years ago, and thereupon set to work to devise an entirely new 'economy outfit' for personal filming. The Cine-Kodak Eight, with its special 'Eight' film, was the result.

You can actually make brilliant black-and-white movies with this camera at the astonishingly low rate of 6d. a scene—or less. Cine-Kodak Eight Panchromatic Film costs 10/- per roll. There's nothing else to pay—Kodak finish it free. On one roll you can get at least 20 separate scenes—enough for a full week-end's filming—each scene as long as the average news-reel shot you see at the cinema. $10/- \div 20 = 6d.$!

And here's something that's hard to believe—until you see it. You can make movies in colour with the Cine-Kodak Eight—gorgeous, glowing colour—as easily as in black-and-white. Simply load up with a special film called 'Kodachrome'. No filters—no gadgets. The vivid beauty and extraordinary life-like results will bring 'Oh's' and 'Ah's' of admiration from your audience.

We haven't left much space in which to describe the wonder-working Cine-Kodak Eight itself. Fortunately it's so simple there's not much to say. You just wind up the spring motor, sight the subject, and press the button. That's all there is to it.

Choice of fast lenses: $f3.5$ (fixed focus) or ultra speed $f1.9$ (focussing 2 ft. to infinity)—you can film in all weathers and indoors. Each camera has a built-in exposure guide; footage indicator, optical viewfinder combined with carrying handle. Stout construction—metal body covered with black grained leatherette.

Cine-Kodak Eight Model 20

including sling-type leather case

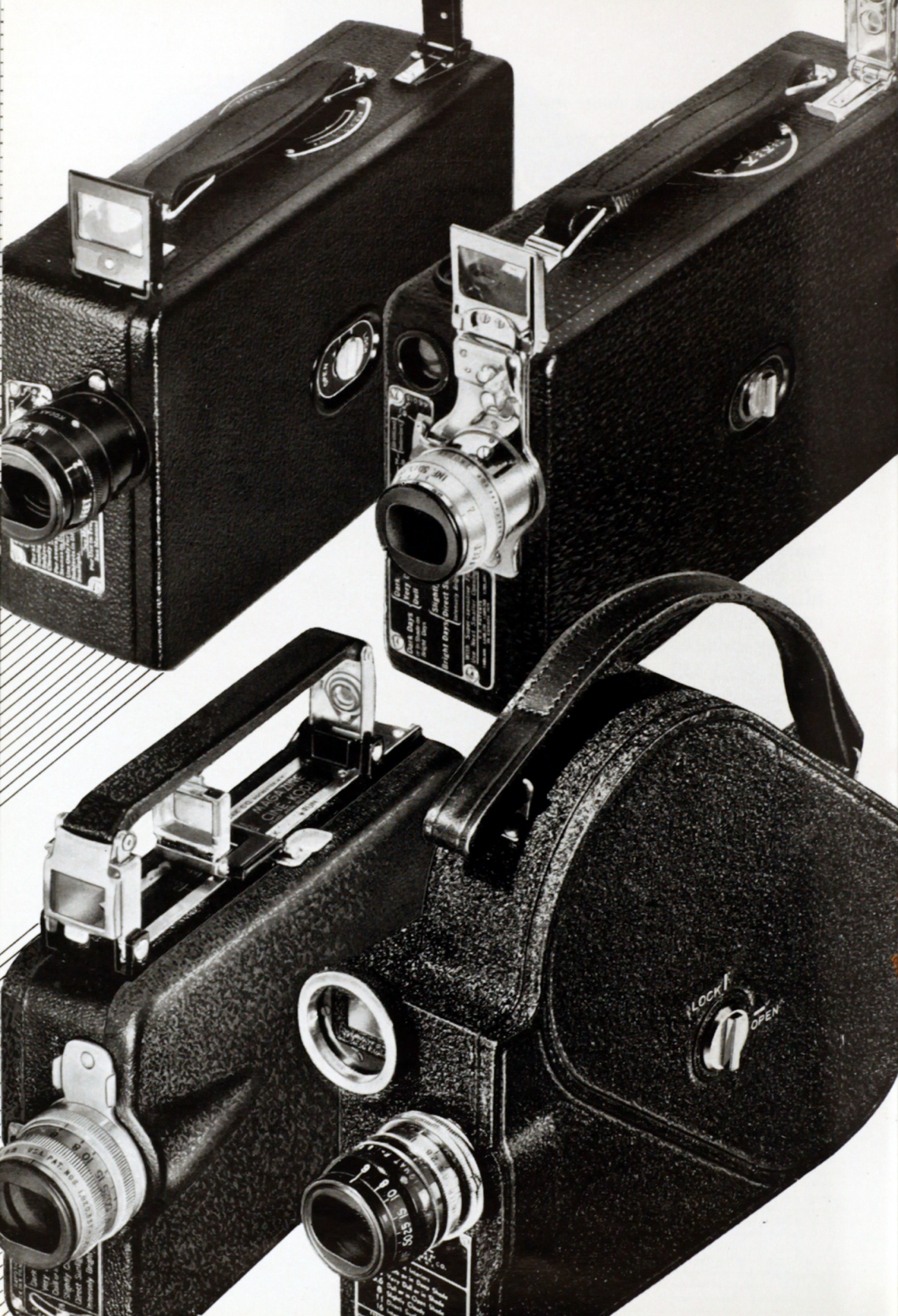
With $f3.5$ lens	£10 0 0
With $f1.9$ lens	£15 0 0

Cine-Kodak Eight Model 60

(de luxe model with interchangeable lens feature) including combination leather case.

With $f1.9$ lens	£25 0 0
----------------------------	----------------

Please ask for special Cine-Kodak Eight Booklet



CINE-'KODAKS' (SIXTEEN)

If you want movie apparatus that's up to all the latest tricks; if you want to do ambitious filming (slow-motion, telephoto, etc.); if you want to show your films on a big screen to large numbers of people at a time—we recommend you to adopt the 'senior' home-movie film gauge (16 mm.). The 'Sixteen' user has a wider range of cameras and projectors at his disposal; it is true that running costs are somewhat higher than with Cine-'Kodak' Eight apparatus, but against this must set off the advantages of greater versatility and power.

Following are the most popular 16 mm. Cine-'Kodaks'. All take 'Kodachrome' colour movies as well as black-and-white.

CINE-'KODAK' MODEL BB JUNIOR (top left)

Fixed focus $f3.5$ or focussing $f1.9$ Kodak Anastigmat Lens. Spring motor; direct-vision viewfinder; automatic footage indicator; built-in exposure guide. Holds 50 ft. 16 mm. Cine-Kodak Film. Price includes leather case.

With $f3.5$ lens	£15 0 0
With $f1.9$ lens	£20 0 0

CINE-'KODAK' MODEL K (top right)

Holds either 50 ft. or 100 ft. of 16 mm. Cine-Kodak Film. $f1.9$ Kodak Anastigmat Lens, interchangeable with 7 other lenses (extra) for telephoto and wide angle cinematography. Two speeds, normal (16 frames per second), and half (8 frames per second). Waist-level and eye-level viewfinder. Spring driven. Price includes leather case. £30 0 0

MAGAZINE CINE-'KODAK' (bottom left)

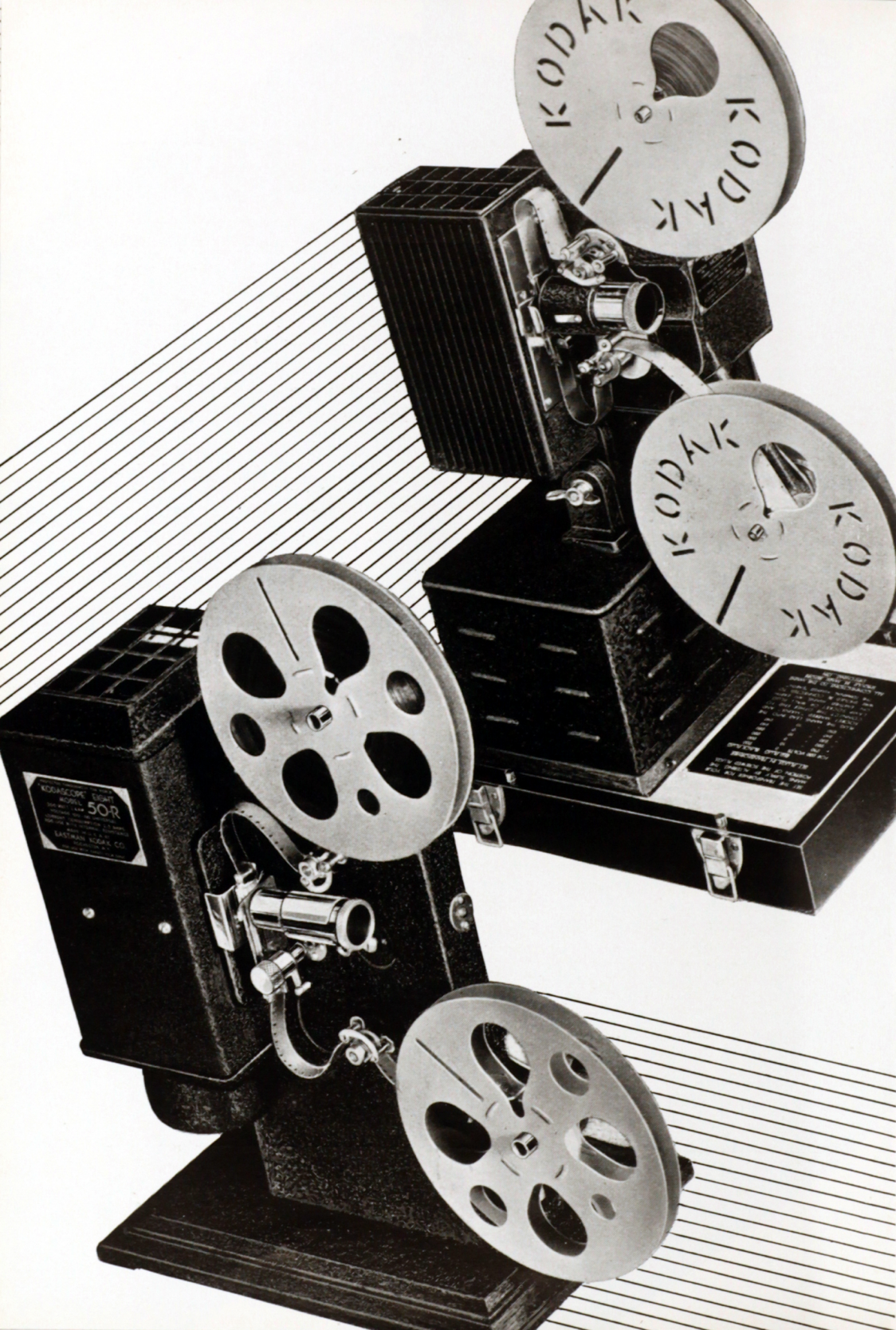
Last word in home-movie cameras. Automatic loading in 3 seconds—simply slip in film magazine and close door; no threading. Instant change-over from black-and-white to 'Kodachrome' or vice versa in mid-reel. Capacity 50 ft. Eight long-focus and wide angle lenses (extra) interchangeable with standard Kodak Anastigmat $f1.9$ lens. Eye-level viewfinder adjustable for all lenses. 3 film speeds, 16, 32 and 64 frames per second for normal and slow-motion work. Pulsing scene timer. Price of camera includes leather case £40 0 0

CINE-'KODAK' MODEL E (bottom right)

3 speeds—16, 32 and 64 frames per second; new type enclosed eye-level viewfinder shows the picture the camera will take, how much film is used to take it, how much film remains unexposed. Prices include combination leather case.

With $f3.5$ lens	£20 0 0
With $f1.9$ lens	£25 0 0

Please ask for 'Sixteen' Cine-Kodak booklet



The 'KODASCOPE'

The 'Kodascope' home projector plugs into the ordinary house electric mains. You have only to thread up the film and snap the switch to enjoy brilliant flickerless movies.

The 'Kodascope' will do more than project the films you have made with the Ciné-'Kodak'. It is a first-class entertainer in its own right! From the 'Kodascope' Library you can hire Comedies, Travel, Topical and Sports Films, Dramas, Cartoons, Documentaries—hundreds of subjects available at moderate rates for home showing through the 'Kodascope'.

Then there are films that you can buy outright, called Ciné-'Kodagraphs'. These cover all the above subjects and include in addition fascinating News-Reels issued every two months. Ciné-'Kodagraphs' enable you to put on a first class, varied, film show at a moment's notice, and with them you can build up a wonderful film library of your own.

Many people taking up home movies for the first time and wishing to economise, invest in a 'Kodascope' first, drawing on the 'Kodascope' Library and Ciné-'Kodagraphs' for entertainment, and follow up by getting a Ciné-'Kodak' later on for making their own films.

Following are the leading 'Kodascope' models

For use with 8 mm. film—

'KODASCOPE' EIGHT MODEL 50R (Illustrated). 200 watt lamp, throws 30 in. × 22 in. picture at 14 feet **£13 13 0**

'KODASCOPE' EIGHT MODEL 80 De luxe machine with brilliant 300 watt lamp and other refinements **£33 0 0**

For use with 16 mm. film—

'KODASCOPE' MODEL D 300 watt lamp, including supplementary resistance (A.C. or D.C.) or transformer (A.C. only) for use on 200–250 volts, and carrying case **£18 10 0**

'KODASCOPE' MODEL EE (Illustrated). 300 watt lamp; choice of 5 interchangeable lenses; carrying case, convertible into projection stand, included in price. Transformer or Universal Model: with 1½" f2 lens **£25 0 0**

'KODASCOPE' MODEL L Choice of 12 lens-lamp combinations makes this de luxe machine instantly adaptable to small room or large hall. Every refinement, including still-picture and reverse actions, and centralised oiling from **£67 10 0**

Please ask for separate 'Kodascope' Catalogue

KODAK FILM

- It was the invention of Kodak Film by George Eastman over 50 years ago that first made popular snapshot photography possible.
- From that day to this Kodak Film has been the universal preference of amateur photographers; millions more snapshots are made on Kodak Film each year than on any other. Kodak Film is made for use in practically every type and size of camera.
- It is also the choice of the world's leading film studios; the vast majority of the movies you see at the cinema are 'shot' on Kodak Film.
- Kodak Film is made by the largest photographic organisation in the world; unrivalled laboratory and manufacturing resources as well as unrivalled experience stand behind every spool you buy.
- Kodak Cameras are specially designed for, and give their best results with, Kodak Film.
- Photo finishing methods throughout the country are naturally adjusted to suit the most popular film—Kodak Film.



KODAK 'VERICHROME' FILM

Speed 28°

Description Double-coated; orthochromatic; anti-halation backed.

Chief characteristics Enormous latitude; high speed; high colour sensitivity—gives true black-and-white rendering of blues, greens, and yellows.

Recommended for Beginners and others who want a superior low-priced film for better-than-average snaps in sun or shade.

The beginner's chief difficulty is knowing what exposure to give. 'Verichrome' is extremely tolerant of exposure errors. Within astonishingly wide limits *over-exposure doesn't matter* with 'Verichrome'. Experiments have proved that 'Verichrome' will yield a printable negative even if over-exposed many hundreds of times.

This extraordinary latitude of 'Verichrome' is due to its two layers of sensitive silver emulsion. A slow coating records the detail in brilliant high-lights and so prevents over-exposure (effect shown in picture A); a fast emulsion records shadow detail that the slow emulsion alone would miss—helps to prevent the effect of under-exposure shown in picture B. Result—the two together give a perfectly balanced rendering of high-lights and shadows, rich in detail all over, as in picture C.

'Verichrome' is more sensitive to colours than ordinary films—yellows and greens, especially—which means that it gives a truer, more natural rendering in black-and-white of landscapes and other subjects where these colours occur. 'Verichrome' also guards against halation (light-spread round the edges of bright objects). A special backing of dyed gelatine absorbs light reflected back into the emulsion from the shiny film base—the cause of halation—and helps to ensure crisp sparkling snaps.

For sizes and prices see page 43



KODAK 'PANATOMIC' FILM

Speed 27°

Description Superfine-grain panchromatic; anti-halation backed; double-coated.

Chief characteristics Gives true monochrome rendering of all colours; yields big clear rich-quality enlargements from the smallest negatives.

Recommended for Miniature and other small-negative cameras, and all photography where pictures of the finest quality are the prime consideration.

'Panatomic' is a *panchromatic* film—sensitive to all colours, even red. Because it 'sees' all the colours that the eye sees, it is able to reproduce them in their true black-and-white relationships. In practice this means that pictures on 'Panatomic' are more natural looking, more vivid and sparkling, and rich in 'quality', as we say.

There are several panchromatic grades of Kodak Film besides 'Panatomic', but 'Panatomic's' special virtue is that in addition to being fully colour sensitive it has an emulsion of *superfine grain*. The granules of silver salts that make a film sensitive to light are in an extraordinarily fine state of division in the case of 'Panatomic' film. The result is that the smallest negative on 'Panatomic' will enlarge beautifully up to practically any size you please, and the enlargements will be amazingly clear and sharp. Owners of small-negative cameras, the majority of whose pictures need to be enlarged, are strongly urged to use 'Panatomic', which has precisely the qualities they need. These qualities make it no less ideal for contact prints, of course. All who, regardless of camera size, put 'quality first' in photography, will find that 'Panatomic' consistently gives them the superior pictures they covet.

For sizes and prices see page 43

KODAK SUPER SENSITIVE PANCHROMATIC FILM

Speed 30°

Description Lightning-fast panchromatic; anti-halation backed; double-coated.

Chief characteristics Very high sensitivity to daylight and artificial light; true tone rendering of colours.

Recommended for Photography in poor light; where fast shutter speeds are necessary, as for sports subjects, etc.; night photography, indoors and out, by artificial light.

All Kodak Films are fast. But sooner or later you will come across the

kind of subjects that make you wonder, 'Is there enough light for a good picture?' It is then you need that extra turn of speed that Kodak Super Sensitive Panchromatic Film possesses.

This film is very fast indeed both to daylight and artificial light. Because of its high speed it has the effect of extending your photographic day; it is the ideal film for snaps of rapid action—sports subjects, etc.—where very short shutter speeds are used. Kodak S. S. Pan. puts your photography on a 24-hour-day basis by throwing open to even the simplest cameras the fascinating new world of photography at night—pictures in your own home by the light of Photoflood lamps, striking records of floodlit buildings, etc. (See page 59 for more about simple, entertaining, inexpensive Night Photography.)

Being fully panchromatic, Kodak S. S. Pan. gets all colours right in terms of black-and-white. And an anti-halation backing ensures crisp recording of bright lights and high-lights.

For sizes and prices see page 43

140 m.p.h. ! R. Caracciola in 1937 German Grand Prix. Shot on Kodak S.S. Pan. Film



Still unbeatable at its price

KODAK REGULAR FILM

Speed 26°

The first of all roll films, improved and improved again since its introduction by George Eastman over 50 years ago. Year-in, year-out dependability made Kodak Regular first favourite with millions of snapshotters. It is still the standard 1/- film ($2\frac{1}{2}$ in. \times $1\frac{1}{8}$ in. and $3\frac{1}{4}$ in. \times $2\frac{1}{4}$ in. sizes), unbeatable for snapshotting on sunny days and Time exposures in any weather.

*Three special films for 'Retina'
and other 35-mm. camera users*

KODAK SUPER X PANCHROMATIC FILM Speed 31°

This film, first introduced by Kodak for the big professional film studios and to-day the almost universal choice of British and American movie directors, is now available for the 'candid camera wizard' who goes in for night-time action shots in theatres, restaurants, cabarets, and so on, and ultra-high-speed action photography on the race-track, etc. by day. Its speed is phenomenal—a full 30% greater than that of Kodak S.S. Pan. (itself no mean performer). Despite the increased speed there is no material difference in graininess.

The emulsion of Super X is coated on a special grey base which cuts out halation. Full colour sensitivity ensures pictures of rich panchromatic quality. To bring out its speed advantage to the full, Super X needs 25% longer developing.

E. F.

Speed 23°

Kodak E.F. Panchromatic Film is a special thinly-coated sensitive material of the finest grain and finest resolution possible. It yields giant enlargements of surpassing clarity. Fully panchromatic.

'KODACHROME'

Speed 22°

The amazing colour film. Simply expose in the normal way; no filters or other gadgets whatever required. Result—superlative transparencies in full natural colour. These can be viewed as they are by transmitted light or projected on to a screen up to any size for group showing. There is no grain in the finished pictures, which are built up of pure colour dyes only.

'Kodachrome' Type A is specially colour balanced for use with 'Photoflood' light.

For sizes and prices see opposite

KODAK FILMS—PRICES

KODAK REGULAR AND 'VERICHROME' ROLL FILM

For use in		Picture Size	Expos- ures	'Verichrome' No. Price		Regular No. Price	
Jiffy	'Kodak' V.P., Baby	2½ × 1⅝ in.	8	V127	1/2	127	1/-
	'Brownie'						
Six-20	'Kodaks'*, Six-20	3¼ × 2¼ in.	8	V620	1/2	620	1/-
	'Brownies' (Box and Folding) and Popular						
No. 1	'Kodaks' and No. 2	3¼ × 2¼ in.	8	V120	1/2	120	1/-
	'Brownies'						
Six-16	'Kodaks' and Six-16	4¼ × 2½ in.	8	V616	1/6	616	1/3
	'Brownies'						
No. 1A	'Kodaks' and No. 2A	4¼ × 2½ in.	8	V116	1/6	116	1/3
	'Brownies'						

KODAK SUPER SENSITIVE PANCHROMATIC AND 'PANATOMIC' ROLL FILM

For use in		Picture Size	Exposures	Super Sensitive Panchro- matic No.	'Pana- tomic' No.	Price
Jiffy	'Kodak' V.P., Baby 'Brownie'	2½ × 1⅝ in.	8	SS127	F127	1/6
Six-20	'Kodaks'*, Six-20 'Brownies' (Box and Folding), and Popular 'Brownie'	3¼ × 2¼ in.	8	SS620	F620	1/6
No. 1	'Kodaks' and No. 2 'Brownies'	3¼ × 2¼ in.	8	SS120	F120	1/6
Six-16	'Kodaks' and Six-16 'Brownies'	4¼ × 2½ in.	8	SS616	F616	1/9
No. 1A	'Kodaks' and No. 2A 'Brownies'	4¼ × 2½ in.	8	SS116	F116	1/9

KODAK FILM FOR MINIATURE CAMERAS (a) 35 mm. film (perforated) in daylight loading and unloading cassettes (cannot be re loaded)

No. of exposures	Code No.	For use in	'Panatomic'	Super-Sensitive Pan-chromatic	Super X Pan-chromatic	E.F.	'Koda-chrome' Regular and Type A
36	135	'Retina', 'Leica', and all other cameras using the 'Leica' cassette	3/6	3/6	4/-	3/6	—
18	135	ditto	—	—	—	—	12/6
36	235	'Contax' cameras	3/6	3/6	4/-	3/6	—
36	—	Unspooled lengths for loading into 'Leica' cartridges	2/-	2/-	2/6	2/-	—
(b) 28 × 40 mm. Roll Film							
8	828	Kodak Bantam	10d	—	1/-	—	—
8	828	Kodak Bantam Special	10d	—	1/-	—	7/-

PLEASE ASK US ABOUT SIZES NOT SHOWN HERE

*For Six-20 Duo 'Kodak' read 16 exposures instead of 8 and picture-size half that stated

KODAK FILM PACKS

Kodak Regular, 'Verichrome', Super Sensitive Panchromatic, and 'Panatomic'

Each film pack consists of 12 films enclosed in a strong and rigid metal casing.

Size of Picture		'Verichrome'		Super Sensitive Panchromatic		'Panatomic'		Regular	
Inches	Centimetres	No.	Price	No.	Price	No.	Price	No.	Price
$3\frac{1}{4} \times 2\frac{1}{4}$	6 × 9	V520	2/11	SS520	4/-	F520	4/-	520	2/8
$4\frac{1}{4} \times 2\frac{1}{2}$	6.5 × 11	V516	3/6
$4\frac{1}{4} \times 3\frac{1}{4}$	8 × 10.5	V518	5/-	SS518	6/3	F518	6/3	518	4/6
$5\frac{1}{4} \times 3$	7.5 × 13.5	V542	6/-
$5\frac{1}{4} \times 3\frac{1}{2}$	8 × 14	V522	6/4

KODAK CUT FILMS

For the 'Anca' and 'Recomar' cameras described on page 29, and other non-roll-film models, Kodak Film is available in the form of flat cut films that can be loaded into ordinary plate-holders, by means of Kodak Cut Film Sheaths (see foot of page). Kodak Cut Films have the twin advantages of being very much lighter than plates and completely unbreakable. Added to these physical advantages they possess fine-quality sensitive emulsions that give beautiful negatives, as the widespread use of these films by professional photographers shows.

KODAK PORTRAIT FILM is made in three grades; Par Speed—suitable for average subjects; Super Speed Ortho—for use when extra speed is called for; and High Speed Ortho Anti-halo, Matt Back—for difficult subjects with contrasty lightings.

KODAK SUPER SENSITIVE PANCHROMATIC FILM AND KODAK 'PANATOMIC' FILM described on pages 40-41 are also available in cut film form.

Size Inches	Kodak Portrait Film	Kodak Super Sensitive Panchrom- atic and Panatomic Film	Size Inches	Kodak Portrait Film	Kodak Super Sensitive Panchrom- atic and Panatomic Film
$3\frac{1}{4} \times 2\frac{1}{4}$ per dozen	1/8	1/10	$5\frac{1}{2} \times 3\frac{1}{2}$ per dozen	4/2	4/6
$3\frac{1}{2} \times 2\frac{1}{2}$ „	1/8	1/10	5×4 „	4/2	4/6
$4\frac{1}{4} \times 3\frac{1}{4}$ „	2/6	2/9	$6\frac{1}{2} \times 4\frac{3}{4}$ „	5/6	6/-

For prices of other sizes please ask us

KODAK CUT FILM SHEATHS

Enable cut films to be used in ordinary plate-holders.

Size	Size
$3\frac{1}{4} \times 2\frac{1}{4}$ in. . . . 6d	5×4 in. . . . 9d
$3\frac{1}{2} \times 2\frac{1}{2}$ in. . . . 6d	$5\frac{1}{2} \times 3\frac{1}{4}$ in. . . . 9d
$4\frac{1}{4} \times 3\frac{1}{4}$ in. . . . 6d	$6\frac{1}{2} \times 4\frac{3}{4}$ in. . . . 1/-

Whether you have them done for you or whether you do them yourself—see that all your prints are made on

'VELOX'

The famous Kodak Quality Paper that gets the best out of every negative



It's the *print* that counts in photography; the *print* that you look at, and show your friends, and stick in your album. The use of the right printing paper is therefore a most important factor in getting first-class pictures.

When you hand in your films for developing and printing, ask to have your prints made on 'Velox'. (Most good photo-finishers supply 'Velox' prints.) 'Velox' gives you pictures in lovely rich blue-black tones, full of delicate gradation, that do your negatives full justice.

'Velox' is made by Kodak specially for use with amateurs' negatives. Kodak know the wide range of conditions under which amateur pictures are taken, and the inevitable variations in negative quality that result. So 'Velox' is made in a number of different grades to compensate for this. There is *Soft* 'Velox' for hard negatives, *Medium* 'Velox' for normal negatives, *Vigorous* 'Velox' for soft negatives and *Extra Contrast* 'Velox' for extremely thin 'ghost' negatives. So long as a negative is printable at all, it will yield its best print on one or other of the 'Velox' grades.

'Velox' pleases all tastes, too, with its range of surfaces—Art (semi-matt), Glossy, and Carbon (dead-matt). (Extra Contrast grade in Art and Glossy only).

'Velox' is supplied in all popular sizes in handy 6d and 1/- packets for home printing.

Look for the name 'Velox' on the back of every print

World famous for Enlargements

KODAK BROMIDE PAPERS

All good snaps deserve enlargement. Kodak Bromide Paper, chosen by amateur and professional photographers as the dependable enlarging medium, offers no less than 14 different combinations of colour, texture and surface, to suit all subjects and please all tastes. Most grades are made in three or four degrees of contrast, on single and double weight base.

Some leading grades—

'NIKKO'—glossy. **VELVET**—semi-matt. **TINTED ROYAL**—cream rough—ideal for exhibition work. **FINE GRAIN TINTED ROYAL**—as above but with smoother surface.

For more advanced work—

KODAK BROMOIL PAPER. 'TRANSFEROTYPE'—paper which enables you to transfer enlargements on to glass, tiles, metal, etc. Details on request.

Supplied in all popular sizes: single weight papers in 6d and 1/- packets, double weight papers in 8d and 1/3 packets.

And a paper that stands on its own—

'BROMESKO'

'Bromesko' deserves a paragraph to itself because there is nothing in the realm of photographic papers quite like it. Briefly, 'Bromesko' is a Bromide paper which yields rich warm tones by direct development. Amateurs accustomed to doing their own enlarging will realise how much that means. Here at last a paper that is as fast as Bromide, as easy to handle, and as inexpensive, which nevertheless gives by the ordinary straightforward process of development those admired warm tones formerly obtainable only on the more expensive and somewhat 'trickier' chloro-bromide papers. Discriminating pictorialists welcome 'Bromesko'; it makes better pictures a lot easier to produce.

'BROMESKO' ASSORTED PACKETS provide best way of trying out 'Bromesko'. Twelve $8\frac{1}{2}'' \times 6\frac{1}{2}''$ sheets in packet, four sheets of each of three different grades. 3/- per packet.

Ask for special 'Bromesko' brochure

LENS ATTACHMENTS *that enable you to do new things with your Kodak Camera*

KODAK PORTRAIT ATTACHMENT

Head-and-shoulder portraits of your friends, interesting 'close-ups' of animals and flowers—pictures like these add interest and variety to your photography. And you can take them with all Kodak cameras. Those models that have a fixed focus lens or one focussing only to 5 feet simply need the addition of a Kodak Portrait Attachment. This is a little extra lens that slips over the ordinary lens and allows you to bring the camera right up close to any subject and still get sharp clear pictures of it. The Portrait Attachment makes no difference to the exposure necessary.

Kodak Portrait Attachments are made in a number of sizes to fit all types of Kodak lenses. See list on page 49.

Kodak Portrait Attachment (any listed size) 3/-



Some people prefer pictures that are not absolutely sharp in outline but artistically 'diffused'. For their benefit the **KODAK DIFFUSION PORTRAIT ATTACHMENT** (for 'close-ups') and **KODAK PICTORIAL DIFFUSION DISK** (for views) are made in sizes to fit most Kodak models. They are available from 7/6 each, according to size. (See list on page 49)

KODAK COLOUR FILTER This is a yellow-tinted lens attachment which slips over the ordinary camera lens.

It gives added brilliance and truth to your pictures by ensuring that nature's colours are rendered more accurately into black-and-white and the shades of grey between. The yellow 'holds back' the over-active blues and allows the yellow and greens in the subject time to record themselves properly on the film. It improves landscapes, too, by making the most of cloud detail in the sky.

The Kodak Colour Filter is best used with Kodak 'Verichrome', 'Panatomic', or Super Sensitive Panchromatic Film. It necessitates a rather longer exposure than normal.

Prices from 4/6, according to size. (See list on page 49).



Lens attachments *(continued)*

KODAK SKY FILTER This resembles the Colour Filter in appearance, except that the upper half only is coloured yellow. It brings out cloud detail without demanding increased exposures.

Prices from 4/6, according to size. (See list on page 49).

KODAK OPTICAL OUTFIT A complete set of Kodak Lens Attachments—Portrait Attachment, Colour Filter and Sky Filter, in a neat velvet-lined case. Prices from 14/-, according to size.

Please give name of camera, and lens and shutter equipment, when ordering any of the above Kodak Lens Attachments

WRATTEN FILTERS The famous Wratten Filters, widely used by commercial and professional photographers and process engravers, are also supplied for use with amateur cameras in metal cells to slip over the lens. A wide range is available—yellow, green, orange, etc.—so that any desired degree of colour correction or contrast can be obtained. Full details and prices on request.

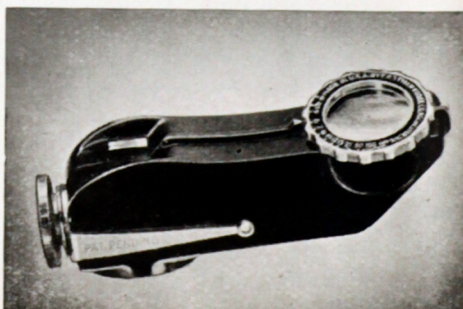
KODAK POLA-SCREENS The Kodak Pola-Screen is a new and valuable accessory which enables you to—

- (1) Photograph obliquely through glass and water.
- (2) Subdue bright oblique reflections to show surface texture (grained wood, etc.).
- (3) Control the rendering of the sky in landscape pictures.

The Pola-Screen fits over the lens like an ordinary filter.

Full details and prices on request.

KODAK POCKET RANGE FINDER Eliminates guesswork in focussing. Makes use of the 'split-field' principle; as the subject is brought into clear definition its distance can immediately be read on a translucent scale visible through the eye-piece. Duplicate scale on operating knob. Clip attached for easy carrying. 35/-



Lens attachments (continued)

For descriptions, see previous two pages

PRICES

	Order by this No.	Portrait Attach- ment	Diffusion Portrait Attach- ment	Pictorial Diffusion Disks	Sky and Colour Filters
FOR 'BROWNIE' CAMERAS					
Six-20 'Brownie'	13	12/6	6/6
Six-20 'Brownie' Junior	1J	3/1-	4/6
Six-20 'Brownie' Junior Super Model	1J	3/1-	4/6
Six-20 Portrait 'Brownie'	1J	4/6
Baby 'Brownie'	3	3/1-	7/6	...	6/6
Popular 'Brownie'	3	3/1-	7/6	...	6/6
Six-20 Folding 'Brownie'	1J	3/1-	4/6
Six-16 'Brownie'	7A	3/1-	7/6	17/6	6/6
FOR JIFFY 'KODAK' V.P.	13	3/1-	7/6	12/6	6/6
FOR SIX-20 'KODAKS' B					
Kodak Anastigmat, f6.3	5	...	7/6	17/6	6/6
Kodak Anastigmat, f4.5	22	6/6
FOR SIX-20 'KODAK' SPECIAL					
Kodak Anastigmat, f4.5	5	...	7/6	17/6	6/6
FOR SIX-20 'KODAKS' JUNIOR					
Kodak Anastigmat, f6.3, f7.7 or Doublet lens	13	3/1-	7/6	12/6	6/6
'Twindar' lens	6A	3/1-	7/6	17/6	6/6
Kodak Anastigmat, f4.5	5A	6/6
FOR SIX-16 'KODAKS'					
Kodak Anastigmat, f6.3	20	6/6
Kodak Anastigmat, f4.5	22	6/6
Kodak Anastigmat, f4.5 (Senior and Special Models)	7A	...	7/6	17/6	6/6
FOR SIX-16 'KODAKS' JUNIOR					
'Twindar'	7A	3/1-	7/6	17/6	6/6
Kodak Anastigmat, f6.3	13	3/1-	7/6	12/6	6/6
FOR 'KODAK' BANTAM SPECIAL					
Kodak Ektar, f2	5	...	7/6	17/6	6/6

For attachments for other models, please consult us

SHUTTER RELEASES

KODAK CABLE SHUTTER RELEASES Made in different sizes to fit different cameras; please consult us for details each 2/1-

KODAK SELF TIMER Presses the trigger for you and so enables you to include yourself in the picture. Can be fitted to any 'Kodak' with cable release 6/1-



You'll need one of these when you give 'Time' exposures

KODAK TRIPODS

Sometimes you have to give 'Time' exposures—for indoor pictures or shots of floodlit buildings, for instance—and a convenient resting-place for the camera is not always handy. On these occasions you need a Kodak Tripod.

G55, G66, G77 Low-priced, light-weight, sturdy tripods with neat black enamel finish. No. G77 has the additional advantage of a swivelling ball-and-socket head, which enables the camera to be tilted through a wide angle—vertically downwards if need be. All three models telescope up compactly.

No.	Sections	Size Closed	Size Extended	Weight	Price
G55	3	15½ in.	41½ in.	12½ OZS.	6/6
G66	3	17½ in.	44½ in.	15½ OZS.	8/6
G77	3	19½ in.	46½ in.	18½ OZS.	12/6

KODAK METAL TRIPODS rigid, strong, telescope up into exceptionally small space for carrying. Nos. 1 and 2 have revolving heads so that the camera can be swung round without moving the tripod; they are fitted with fastening straps. No. 0 has a fixed head and no straps.

No.	Sections	Size Closed	Size Extended	Weight	Price of Tripod	Price of Leather Case
0	3	15¼ in.	39½ in.	15 OZS.	13/6	9/-
1	4	15 in.	48½ in.	24¼ OZS.	21/-	9/-
2	5	13½ in.	49½ in.	25 OZS.	25/-	8/6

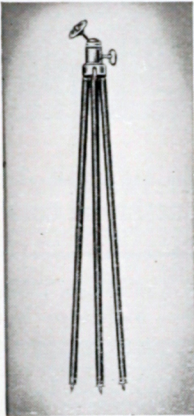
Rubber Tips for tripod feet, per set of 3 9d

THE 'KODAPOD' is a 'pocket tripod'. It has toothed jaws at one end which will grip firmly on to tree or post; a clamping screw at the other holds the camera firmly in position during exposure. Price 8/6

THE 'OPTIPOD' Another form of pocket tripod. The clamp is felt-lined so that it can be fixed on to a chair, table, etc., without risk of marking the surface. A ball-and-socket joint allows the camera to be adjusted to any angle. The 'Optipod' can also be used on an ordinary tripod for tilting the camera in any direction to get unusual angle shots. Price 7/6

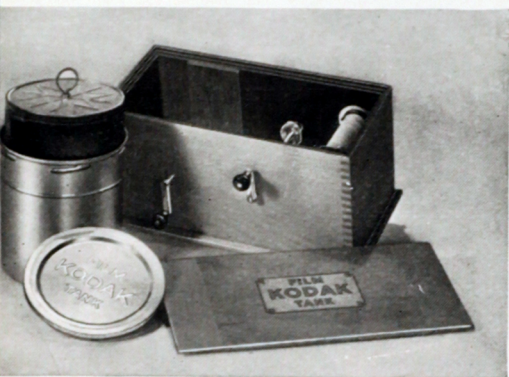
KODAK HAND AND NECK STRAPS Flexible braided loops of artificial leather attached to a swivelling milled knob which can be screwed into any standard tripod socket. They allow the camera to be carried 'at the ready', suspended from either the neck or wrist, while the hands remain free.

Kodak Hand Strap	2/-
Kodak Neck Strap	3/6



The easy way of developing your own films

KODAK FILM TANKS



Do you do your own developing? If so, do it the easy Kodak way. There's no rigging up a makeshift darkroom in the cellar; it's daylight all the way with the Kodak Film Tank. The film is first wound up in a light-proof 'apron'; then the 'apron', with the film inside it, and safely shielded from light, is put into the developing solution for a standard time and afterwards fixed and washed. There's no skill re-

quired, you can't go wrong, and the whole operation can be carried out in the comfort of an ordinary room.

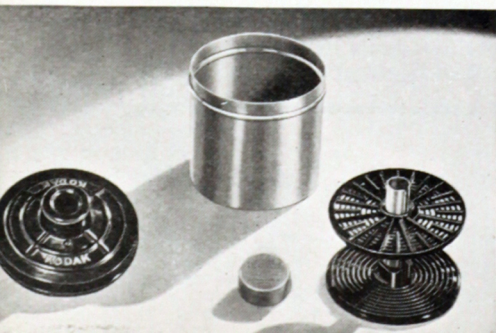
Kodak Film Tank No. 2 $\frac{1}{2}$, for all Kodak Films taking pictures 3 $\frac{1}{4}$ × 2 $\frac{1}{4}$ inches or less	£1 1 0
Kodak Film Tank No. 2 $\frac{1}{2}$, for all Kodak Films taking pictures 4 $\frac{1}{4}$ × 2 $\frac{1}{2}$ inches or less	£1 10 0
Kodak Film Tank No. 3 $\frac{1}{2}$, for all Kodak Films taking pictures 5 $\frac{1}{2}$ × 3 $\frac{1}{4}$ inches or less	£1 17 6

KODAK ADJUSTABLE FILM TANK

The advantage of this model is that the one Tank can be adjusted to accommodate all the most popular sizes of Kodak Film—Nos. 620, 120, 616, 116, 127, 828, 135, and 235—simply by shifting a flange from one notch to another. The film has to be loaded into the Tank in the darkroom; after that, all the operations of developing, fixing, etc. can be carried on in daylight. Made of stainless acid-resistant steel; cover of durable moulded material

£1 10 0

For Developer Powders for use with these Tanks see page 60



DEVELOPING AND PRINTING AIDS

for the man who 'does his own'

KODAK FILM PACK TANK Apart from the initial loading of the film into the Tank, which is done in the dark, all the convenience of daylight developing can be enjoyed by film pack users as well as by means of the Kodak Film Pack Tank. It holds 12 films, so that all or part of a pack can be handled at once.
No. 1 for 3½ × 2½ in. or 6½ × 9 cm. films 8/6
No. 2 for all sizes of films up to 5½ × 3¼ in. 15/–
Developing Powders, per packet of 6—for No. 1 Tank 1/–; for No. 2 Tank 1/6

KODAK FILM CLIPS are useful for holding the ends of the film during dish development and when it is hung up to dry.
Kodak Film Clip with 2-inch jaws 1/6

KODAK JUNIOR FILM CLIP No. 1 A narrower clip suitable for narrow films such as Vest Pocket size 9d

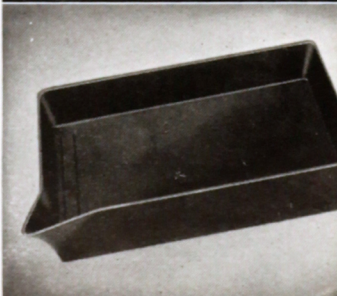
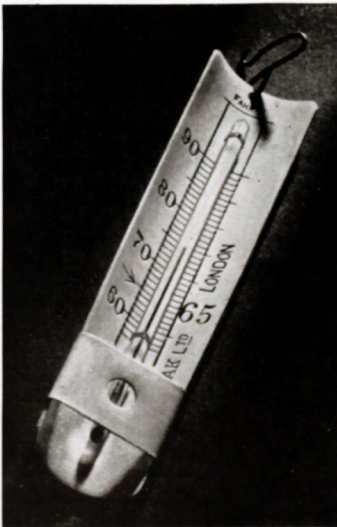
KODAK THERMOMETER Whether you develop by Tank or dish you need to know the temperature of your solutions accurately to get the best negatives. The Kodak Thermometer is made specially for photographic purposes; the degrees are boldly marked and widely spaced; they range from 60° to 90° F. Provided with a hook which allows it to be suspended inside a Tank. Price 3/–

KODAK THERMOMETER STIRRING ROD A combination of two darkroom necessities. Consists of a glass stirring rod ¼ inch in diameter and 9½ inches long, enclosing a reliable tested thermometer. One end is flattened for the purpose of crushing chemicals. Invaluable as a time-saver; the temperature is taken while the chemicals are dissolving. Fahrenheit will be sent unless Centigrade specially ordered. In wooden box 5/6

DISHES Available in 'Kodaloid' (assorted colours), Bakelite (black or mottled red) and Porcelain.

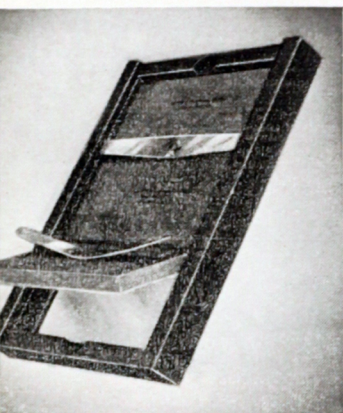
Sizes	'Kodaloid'	Bakelite	Porcelain
3½ × 2½ in.	5d	—	1/6
4½ × 3¼ in.	7d	1/3	2/–
5 × 4 in.	8d	—	2/3
5½ × 3½ in.	8d	1/9	2/3
6½ × 4¾ in.	1/–	2/9	3/–
8½ × 6½ in.	1/4	4/–	5/–

Prices of larger sizes on application

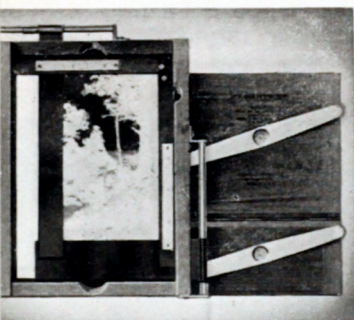


If you make your own prints

KODAK PRINTING AIDS



Eastman Non-slip Printing Frame



Kodak Auto-mask Printing Frame

PRINTING FRAMES

THE EASTMAN NON-SLIP PRINTING FRAME Strong, well-finished in varnished wood. Price—1/3 in the Vest Pocket ($2\frac{1}{2}$ in. \times $1\frac{5}{8}$ in.) size; larger sizes also available.

THE POPULAR PRINTING FRAME Cheaper but thoroughly efficient. Complete with glass—1/3 in the Vest Pocket and $3\frac{1}{4}$ in. \times $2\frac{1}{4}$ in. sizes. Larger sizes also available.

THE KODAK AUTO-MASK PRINTING FRAME Takes any negative up to 5 in. \times 4 in. or $5\frac{1}{2}$ in. \times $3\frac{1}{4}$ in. Has own set of masks which make it easy to get even, white borders on prints of any size. Price 8/6

'KODALOID' PRINTING MASKS A 'Kodaloid' Mask is a sheet of transparent ruby material with an opening in the centre a little smaller than the negative from which you are printing. Although transparent the Mask is non-actinic (will not let photographically-active light through) so that by arranging a negative over the opening and placing the printing paper on the other side, you surround each picture with a neat white border. From 6d each, according to size.

PRINT TRIMMERS

A print must be trimmed square and straight to look its best. And trimming often improves composition. With a Kodak Print Trimmer you can be sure of a straight, clean cut.

THE KODAK PRINT TRIMMING BOARD Is fitted with a rule and fine quality steel blade. The blade can be detached for sharpening.

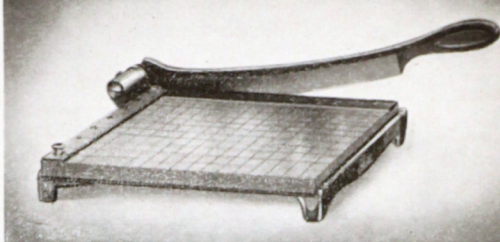
PRICES

For prints up to 5 in.	.	.	4/6
For prints up to 7 in.	.	.	5/6



THE 'EASTKO' TRIMMER

Has a wooden rule and a substantial fine-quality knife; the bed is ruled off in half-inch squares. Will trim enlargements up to 10 in. . . . £1 15 0



PRINTERS

For making numbers of prints you will find one of the Kodak Printers a great advantage over an ordinary printing frame. They are easy to handle, allow you to work speedily, and as the printing light and distance remain constant, enable you to standardise exposures.

THE 'RAPID' ELECTRIC PRINTING BOX

Consists of wooden box with glass printing surface at the top covered by hinged lid. Inside the box are a red and a white electric light bulb. When the lid is opened the red light is switched on, giving sufficient safe light to enable you to adjust negative, mask and paper. When the lid is pressed down, the red light goes out and the printing light is automatically switched on to make the exposures. Works from an ordinary torch battery. Takes all negatives up to 6 x 4 in. Complete with bulbs and battery

PRICE 12/6

KODAK AMATEUR PRINTER

Works on the same principle as the 'Rapid' described above. Plugs into the ordinary electric light circuit and so allows a more powerful light to be used (40-watt pearl lamp advised). Masking device allows prints with white margins of any size from 2½ in. x 1½ in. up to 5 in. x 4 in. or 5½ in. x 3¼ in. to be made.

PRICE—Complete with 5½ feet of flex and plug, but without lamps . £3 3 0



Easy-to-use, low-cost

KODAK HOME ENLARGER

An ordinary print, the same size as the negative from which it is made, is by no means the end of the photographic story. To see your pictures at their best you must see them as enlargements, and if you have a mind to do this work yourself there is no easier way than by using the Kodak Home Enlarger. It takes any size of negative from half Vest Pocket ($1\frac{5}{8}'' \times 1\frac{1}{4}''$) up to and including $4\frac{1}{4}'' \times 3\frac{1}{4}''$ and 9×12 cm.—that is to say all the most popular sizes—and makes enlargements up to $14'' \times 11''$.

It consists of an easel, on which the Kodak Bromide Paper is pinned, and a camera portion, which contains the electric lamp and lens.

For focussing, the camera portion is slid to or from the screen along a grooved wooden support.

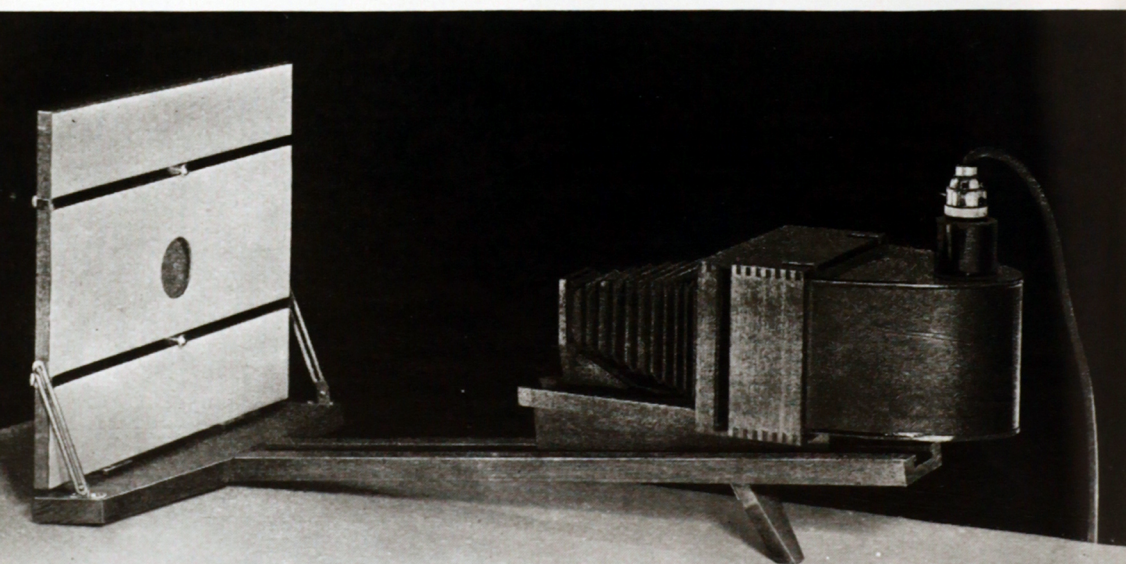
The whole Enlarger can be folded up compactly after use.

KODAK HOME ENLARGER

Without lamp, but complete with 'Kodar' (98 mm.) Lens, negative holder, paper holder, and full instructions **£5 12 6**

56

60-watt lamp advised—obtainable at any electrician's



WRATTEN LAMPS

AND OTHER DARKROOM EQUIPMENT

For enlarging work (and also for developing film if you do not use a Kodak Film Tank) you need a darkroom lamp to give you 'safe' light that will not fog your sensitive material.

THE WRATTEN SAFELIGHT LAMP

is made for use with electric light, gas, or oil. Any Safelight can be supplied, suitable for Kodak Bromide Papers, Kodak 'Verichrome' Film, Kodak Super Sensitive Panchromatic Film, etc. Please ask for full details.

Wratten Safelight Lamps, complete
 with one Safelight . 7 × 5 in. £1 0 0
 10 × 8 in. £1 10 0
 12 × 10 in. £2 0 0

THE 'PROGRESS' DARKROOM LAMP

An inexpensive little lamp for nightlight or oil.

Model 1, for nightlight 1/6
 Model 3, for oil 2/6

FERROTYPE PLATES Polished metal plates that enable you to give a high gloss to your pictures. The prints or enlargements are squeegeed down on to the plate while wet.

14 × 10 in. Standard Thickness . each 10d
 Extra Thick 1/6

GLASS MEASURES Graduated vessels for measuring out solutions, etc. accurately.

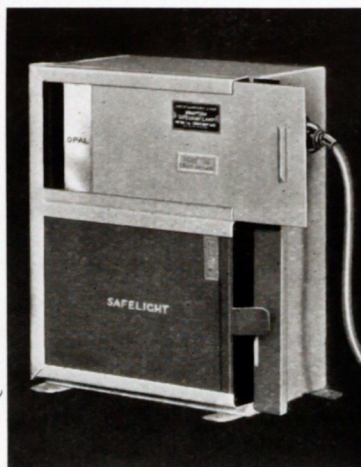
In all sizes from 1 drachm to 40 ozs. (1 quart).

PRICE from 9d to 4/-

EASTMAN PRINT PADDLE

Enables you to manipulate prints in the fixing bath without getting hypo on your fingers. Made of hard rubber moulded round an aluminium core.

PRICE 2/6





Sundries for the

HOME DARKROOM

KODAK PUSH PINS For pinning up films and prints to dry. Box of 12—With composite heads . 1/3 With aluminium heads . 1/-

KODAK TIMER Enables the photographer to time exposure and development with absolute accuracy. The dial is large and boldly marked. It has a second and a minute hand; both can be set quickly by the turn of a key, and the Timer can be instantly started or stopped 27/6

KODAK PRINT ROLLER For squeegeeing prints and enlargements on to Ferrotypes Plates (see page 57), and for quick, clean mounting. Two 6-inch rubber rollers suspended from nickelled handle give firm, even pressure 7/6

Making the most of your pictures

COLOURING—RETOUCHING

'VELOX' TRANSPARENT WATER COLOUR STAMPS

A "book" of 12 different coloured paper "leaves", each "leaf" being perforated into 26 small squares. These are detached and dissolved in water to make the actual tinting solutions. Also useful for tinting lantern slides 2/6

'VELOX' WATER COLOUR OUTFIT Complete colouring outfit—Book of 'Velox' Water Colour Stamps (see above) and three brushes in box, the lid of which forms a mixing palette 6/-

KODAK SOLUBLE CRAYON OUTFIT Another simple colouring outfit—Seven 3½ in. coloured pencils, bottle of medium, and roll of cotton wool. Complete with instructions 2/6

KODAK RETOUCHING SET FOR NEGATIVES Pencil-holder, three refills, retouching medium, spotting medium, spotting brush 3/6

KODAK BROMIDE RETOUCHING SET For bromide enlargements. Four crayons—two black, one sepia, one white—in box 2/-

KODAK SPOTTING PALETTE including eight colours and brush 1/3



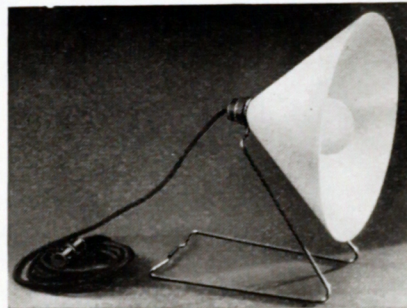
KODAK NIGHT PHOTOGRAPHY AIDS

There are twice as many picture subjects open to even the simplest camera as there were a few years ago. For you can now go on using your camera after dark, take pictures of baby in his bath, the family playing bridge, floodlit buildings, hundreds of other subjects off the beaten track. The secret is simple. Load up with one of the special high speed Kodak Films—Super Sensitive Panchromatic or Super X for black-and-white, 'Kodachrome' Type A for colour—and for home pictures use one of the following powerful but simple and inexpensive lighting aids.



'PHOTOFLOOD' LAMP Plugs into electric light socket just like an ordinary electric bulb; gives powerful continuous light sufficient for an immense number of pictures. Made in all standard voltages. **2/6**

'KODAFLECTOR' REFLECTOR Specially designed aluminium reflector for 'Photoflood'. Increases efficiency of illumination about $7\frac{1}{2}$ times, decreases necessary exposure times accordingly. Fits on to any standard lamp-holder **3/-**



'KODAFLECTOR' OUTFIT Consists of 'Kodaflector' Reflector plus handy wire stand enabling 'Kodaflector' to be stood on table or chair, suspended from picture-rail or shelf. Complete with 9 feet of flex, bayonet adapter to fit any electric socket, and bayonet lamp-holder for 'Photoflood', but without 'Photoflood' Lamp **7/6**

'KODAFLECTOR' TWO-UNIT FLOOR STAND Collapsible tubular stand, height fully extended, 6 ft. Fitted with two horizontal arms, each swivelling independently in any direction and each holding a 'Kodaflector' Reflector and 'Photoflood' Lamp. Complete with two 'Kodaflectors' but without 'Photofloods' **38/-**

BABY 'SASHALITE' BULB The modern successor to flashlight. No smoke, no smell, no danger. Gives one brilliant flash, fired by pocket torch battery **-/8**

'SASHALITE' AMATEUR OUTFIT Consists of two Baby 'Sashalite' Bulbs, battery in holder, and collapsible reflector **7/6**

KODAK TESTED CHEMICALS

*For developing, fixing, sepia toning,
etc.*

As well as being available for the photographer who does his own finishing work, many Kodak Tested Chemicals are used by Kodak Ltd themselves in the manufacture of Kodak products; a sufficient guarantee of rigorous purity and finest quality.



KODAK DEVELOPING POWDERS

KODAK SPECIAL DEVELOPER, HYDROQUINONE, ELON QUINOL, ELON, PYRO-ELON, PYRO-SODA, VELOX DEVELOPER In packet form ready for mixing. Convenient, reliable, and economical. They are sold in boxes of 6 packets at 1/6 per box.

TANK DEVELOPER POWDERS

For Kodak Film Tank Nos. 2 and 2 $\frac{1}{4}$	6 Powders	-19
For Kodak Film Tank Nos. 2 $\frac{1}{2}$ and 3 $\frac{1}{2}$		1/3

Per Packet of
6 Powders

'D76' DEVELOPER POWDERS

To make 14-oz. solution (for No. 2½ Kodak Film Tank) . . .	per Powder, -19
To make 20-oz. solution (for Leica Correx Film Tank) . . .	per Powder, 1/-

KODAK ULTRA FINE GRAIN DEVELOPER POWDERS

To make 14-oz. solution, per packet, 1/- To make 20-oz. solution, per packet, 1/3

DEVELOPERS AND OTHER CHEMICALS IN SOLUTION

Kodak Special Developer, 8-oz. bottle, making 16 to 32 oz. Developer	1/3
'Velox' Concentrated Developer, 8-oz. bottle, making 16 to 32 oz. Developer	1/3
Kodak Elon Quinol Developer, 8-oz. bottle, making 32 oz. Developer	1/3
'Kodol' Highly Concentrated Single Solution Developer (3 oz. make 75 oz. and upwards)	2/-
'Bromesko' Developer No. 1 (for maximum warmth of tone) or No. 2 (medium warmth) 8-oz. bottle to make 24-oz. solution	1/3
Potassium Bromide 10% Solution	per bottle -1/9

FIXERS, TONERS, INTENSIFIER etc

Kodak Acid Fixing Salt, requires only dissolving in water to make an acid fixing bath.	In tins— $\frac{1}{4}$ lb. 7d; $\frac{1}{2}$ lb. 10d; 1 lb.	1/6
Chromium Intensifier Cartridges, for intensifying weak negatives. In glass tubes, each tube making 8 oz. of Intensifier, per half dozen		2/6
Kodak 'Hypo' (Sodium Thiosulphate) in clear pea crystals . per lb.		-1/6
Kodak Sepia Toner, for toning 'Velox' or Bromide prints to rich sepias,	per set	1/6 and
Kodak Liquid Hardener, for making Acid Fixing Bath with Hypo, 8-oz. bottle		1/3

Give your pictures a good home—in

KODAK ALBUMS

SLIP-IN ALBUMS

THE 'LYNTON' Brown or Grey covers of leather cloth with sheepskin grain. Leaves to match cover, secured by silk-finished tasselled cord. Holds 96 prints.

For $2\frac{1}{2} \times 1\frac{5}{8}$ in. prints	4/6
„ $3\frac{1}{4} \times 2\frac{1}{4}$ in. „	5/-
„ $4\frac{1}{4} \times 2\frac{1}{2}$ in. „	6/-

THE 'OXFORD' Brown covers of polished leather cloth with crocodile finish. Tasselled cord. Holds 96 prints.

For $2\frac{1}{2} \times 1\frac{5}{8}$ in. prints	4/6
„ $3\frac{1}{4} \times 2\frac{1}{4}$ in. „	5/6
„ $4\frac{1}{4} \times 2\frac{1}{2}$ in. „	6/6

THE 'ROAN' Inexpensive album bound in stout card with brown leather-grain finish. Holds 48 prints. ($2\frac{1}{2} \times 1\frac{5}{8}$ in. size, 36 prints).

For $2\frac{1}{2} \times 1\frac{5}{8}$ in. prints	9d
„ $3\frac{1}{4} \times 2\frac{1}{4}$ in. „	1/3
„ $4\frac{1}{4} \times 2\frac{1}{2}$ in. „	1/6

PASTE-ON ALBUMS

THE 'ASTON' Leather-finished card covers of Antwerp blue; 12 light grey leaves held in place by silk-finished tasselled cord.

Size— $6 \times 4\frac{7}{8}$ in.	6d
-----------------------------------	----

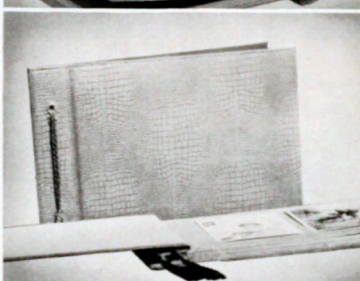
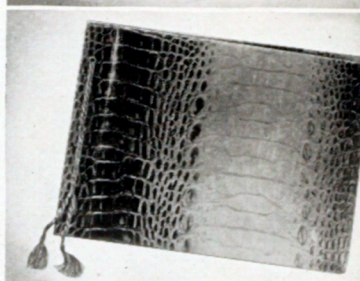
THE 'PURLEY' Stout light-grey grained card covers. Twelve leaves to match; silk-finished tasselled cord.

Size— $7\frac{5}{8} \times 6$ in.	1/-
-----------------------------------	-----

THE 'RHODES' Cover of embossed black book-cloth with word 'Photographs' stamped in gilt. Fifty stout black paper leaves.

Size— 8×5 in.	3/6
11 \times 7 in.	5/-

This is a small selection only; we have many others to show you.



New ways of

MOUNTING YOUR PICTURES



Other attractive ways of mounting prints and enlargements are (1) on cards, (2) in folders, (3) in passe-partout frames. We recommend—

KODAK LINEN TEXTURE MOUNTS

Stout art papers with linen grain surface, made in 13 different tints. Supplied in packets containing one colour only or in assorted colours. In each packet Adhesive Tints for dry mounting are included.

- 18 Mounts, 8×6 in., including 9 Adhesive Tints
per packet 1/-
- 14 Mounts, 10×8 in., including 7 Adhesive Tints
per packet 1/-
- 9 Mounts, 12×10 in., including 4 Adhesive Tints
per packet 1/-

'FRIENDSHIP' FOLDER Made of good quality card, and art paper with linen grain surface. Print opening surrounded by border of darker tint. Brown or Grey

	Per doz.	Per 100
For prints $2\frac{1}{2} \times 1\frac{5}{8}$ in. . . .	1/-	7/6
„ „ $3\frac{1}{4} \times 2\frac{1}{4}$ in. . . .	1/3	9/-
„ „ $4\frac{1}{4} \times 2\frac{1}{2}$ in. . . .	1/6	10/6
<i>Larger sizes also available</i>		



KODAK METAL PASSE-PARTOUT FRAME

The quickest, simplest way of framing with glass, applicable equally to mounted or unmounted prints. The glass is placed over the picture, the frame fitted round it, and the corners fixed by pushing metal tabs through the slots provided. The frame is provided with a reversible strut for standing it in upright or horizontal positions, and a metal hook for hanging it on the wall.

	$5\frac{1}{2} \times 3\frac{1}{2}$	$6\frac{1}{2} \times 4\frac{1}{4}$	$8\frac{1}{2} \times 6\frac{1}{2}$	10×8
Black Finish	1/6	1/9	2/-	2/6
Brown Finish	1/6	1/9	2/-	2/6
Oxidised Finish . . .	2/-	2/-	2/9	3/-
Bronze Finish	1/9	1/9	2/6	3/-

For mounting without mess

MOUNTING AIDS

EASTMAN DOUBLE-COATED MOUNTING TAPE Does away with all necessity for paste-pot and brush. The tape is simply moistened on one side and placed round back of print; the other side moistened and the print pressed down on mount. Quick, clean, simple.

Per roll of 50 feet 1/6 Per roll of 100 feet 2/-

KODAK MOUNTING STAMPS Book of 24 sheets, each sheet perforated to make 24 stamps, gummed on both sides. Method of use similar to that of Eastman Double-coated Mounting Tape.

Per Book 3d

Store your negatives safely in a

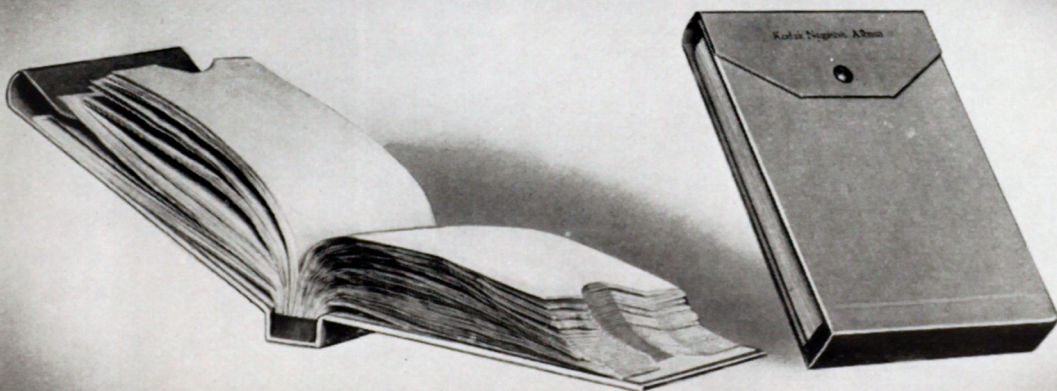
KODAK NEGATIVE ALBUM

It is important to keep your negatives safe and accessible as well as your prints, and the Kodak Negative Album provides the best way of doing it. This is a 'book' of 100 transparent envelopes numbered consecutively on the outside. An index at the front is similarly numbered, so that you can note down the subject of each negative as you file it away and be sure of turning any one up in an instant by a glance at your entries in the index. The negatives can be examined without removing them from their transparent envelopes. A stout cover with press button fastener completes this most useful Album.

Prices from 3/6 according to size.

KODAK MINIATURE NEGATIVE ALBUM Contains 50 leaves; each leaf holds one strip of 4 negatives, size $1\frac{3}{16}'' \times 1\frac{9}{16}''$ ('Retina', Leica, etc.) 6/6

63



Make yourself a better photographer by reading

'HOW TO MAKE GOOD PICTURES'

How to make good pictures? Every camera-owner wants to know, and the answer is—read this wonderful shilling book.

Here is good advice on exposure and composition; simple descriptions of the fundamentals of the photographic process; notes on indoor work, portraiture, colouring and many another photo topic—and there's a picture to nearly every one of the book's 176 pages. For compressed information, instruction and delight, "How to Make Good Pictures" stands alone. You must not miss it 1/-

THE 'KODAK MAGAZINE'

The monthly journal for everyone who enjoys fine pictures. In addition to its superb illustrations the Kodak Magazine tells you how to get more out of your camera, gives hints and technical tips in non-technical style, and contains articles on travel, customs, and other general topics. 3d every month, 4/6 a year post free.

64



PHOTOGRAPHY

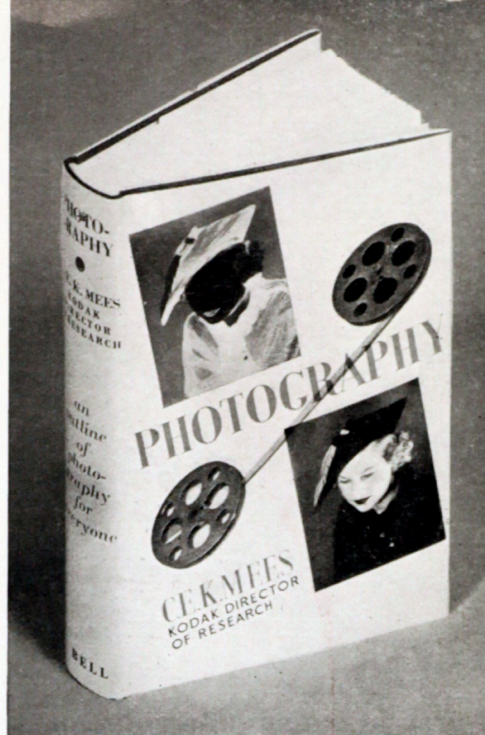
By *Dr C. E. K. MEES Hon. F.R.P.S.*

(KODAK DIRECTOR OF RESEARCH)

'All about it' by a world-famous authority. Photography as a hobby, a science, and an industry; its history from the early days of the wet-plate to the modern home movie camera; the mysteries of emulsion-making; current photographic practice; cinematography; colour photography—all dealt with in lively and lucid style. First-class reading for beginners, advanced workers, everyone.

63 plates (3 in colour)

Published by G. BELL & SONS LTD 7/6



INDEX

Albums	page 61	'Optipod'	page 51
Album, Negative	63	Outfits, Colouring	58
Attachments, Lens	47-49	Optical	48
'Bromesko' Paper	46	Paddle, Print	57
Bromide Paper	46	'Photoflood' Lamp	59
'Brownies'	7-12, 15	Pins, Push	58
Camera Cases	50	Pola-Screens	48
Cameras—'Brownies'	7-12, 15	Portrait Attachments	47-49
'Kodaks'	13, 17-29	Printers	55
Chemicals, Kodak Tested	60	Printing and Enlarging Papers	45-46
Cine 'Kodaks'	33-35	Publications	64 & Inside Back Cover
Clips, Film	53	Range-Finder, Pocket	48
Dishes	53	Releases, Cable	49
Enlarger	56	Retouching Sundries	58
Ferrotypes	57	Roller, Print	58
Films, Kodak	38-44	'Sashalite'	59
Filters, Sky and Colour	47-49	Self-Timer	49
Frames, Printing	54	Sheaths, Cut Film	44
'Kodaflector' Reflector	59	Tanks, Film	52-53
'Kodaks'	13, 17-29	Thermometer	53
'Kodapod'	51	Timer, Kodak	58
'Kodachrome'	42	Trimmers, Print	54-55
'Kodascopes'	37	Tripods	51
Lamps, Darkroom	57	'Velox' Paper	45
Measures	57	'Velox' Colour Stamps	58
Miniature Cameras	23-27	Wratten Filters	48
Mounts, etc	62	Wratten Lamps	57



Kodak

is the Trade Mark and exclusive property of
the Kodak Company. The word 'Kodak' can
lawfully be used only in connection with products
made or supplied by the Kodak Company