



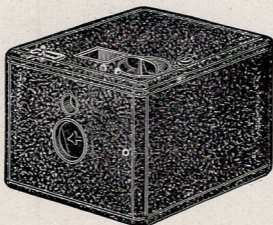
# HAWK-EYE CAMERAS.

---

FOR SALE BY

**Fred E. Munsey & Co.**  
**CAMERAS & PHOTO SUPPLIES**  
408 SOUTH BROADWAY  
[Chamber of Commerce Building]  
**LOS ANGELES, CAL.**

# The Baby Hawkeye.



Dimensions,  $2\frac{1}{2}$  x  $3\frac{1}{4}$  x 4 in.

Size of Photo., 2 x  $2\frac{1}{2}$  in.

Weight, 7 oz.

Capacity, 12 exposures.

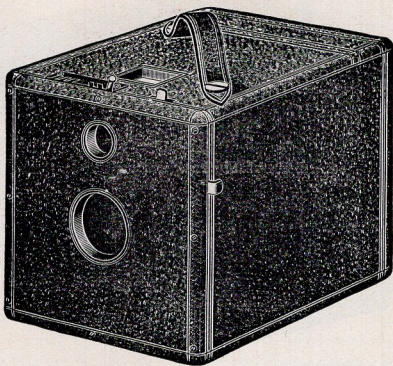
---

A high grade Camera on a small scale. Loads in broad daylight, is fitted with an achromatic lens, time and instantaneous shutter with different speeds, and a registering tally that shows at a glance the number of exposures made. The finder is shaped the same as the picture and shows just what will be produced.

## PRICE LIST.

The Baby Hawkeye with Film for 12 Exposures,	.	\$5.00
Leather Carrying-Case with Strap,	. . . . .	1.00
Developing Outfit . . . . .	. . . . .	.80
Printing Outfit . . . . .	. . . . .	.80
Sunlight Film, 12 Exposures . . . . .	. . . . .	.40

## The Hub Hawkeye.



Dimensions, 4 x 4½ x 6 inches.

Weight, 16 oz.

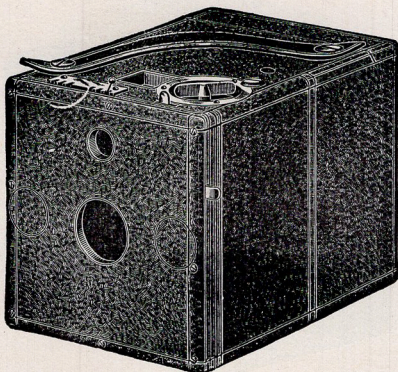
Size of Photo., 3¼ x 3¼ inches.

This Camera is designed for the use of glass plates only. The finish and general appearance is similar to the Hawkeye Junior, and the lens used of equal quality. By omitting the device for roll film a first-class outfit is furnished at a very small cost.

### PRICE LIST.

The Hub Hawkeye with Holder for plates, . . . . .	\$5.00
Extra Holders, each, . . . . .	.75
Leather Carrying-Case, . . . . .	1.50
Developing Outfit . . . . .	1.00
Printing Outfit . . . . .	1.00

# The Hawkeye Junior.



3½ x 3½.

Dimensions, 4½ x 4½ x 6 in.

Size of Photo., 3½ x 3½ in.

Weight, 20 oz.

Capacity, 25 Exposures.

4 x 5.

Dimensions, 5¾ x 6¼ x 9 in.

Size of Photo., 4 x 5 in.

Weight, 2 lbs. 14 oz.

Capacity, 18 Exposures.

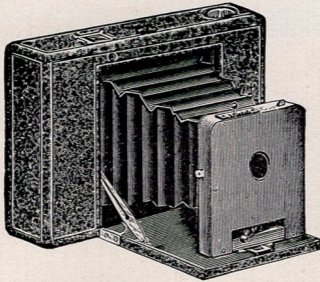
The advantage of using either roll film or glass plates must be considered when selecting a Camera, as it is often the case that one or two exposures are required for immediate development, and by using the holder with plates the expense of an entire roll of film is saved.

The Hawkeye Jrs. are so constructed that they can be used interchangeably without any attachment other than a plate holder.

## PRICE LIST.

	3½ x 3½.	4 x 5.
The Hawkeye Jr. Leather Covered, . . . . .	\$8.00	\$15.00
Double Holder for dry plates, . . . . .	.75	1.00
Leather Carrying-Case with Strap, . . . . .	1.50	2.50
Developing Outfit . . . . .	1.00	1.25
Printing Outfit . . . . .	1.00	1.25
Sunlight Film, 12 Exposures . . . . .	.60	.85

# The Tourist Hawkeye.



3½ x 3½.

Dimensions, 1⅝ x 4½ x 6½ in.

Size of Photo., 3½ x 3½ in.

Weight, 15 oz.

Capacity, 12 Exposures.

4 x 5.

Dimensions, 2 x 5½ x 8¾ in.

Size of Photo., 4 x 5 in.

Weight, 20 oz.

Capacity, 12 Exposures.

In constructing this Hawkeye, we have aimed to produce a Camera making a picture of good size, and still of small dimensions. The Lens used is a first quality achromatic that is guaranteed to cover the field under any conditions. The Shutter is a simple, reliable piece of mechanism, so constructed that any amount of jarring will not affect its working qualities. It can be regulated for different speed, which is the means of obtaining properly timed negatives under varying conditions. A set of three stops is also provided, and the Finder is extra brilliant, showing the object very plainly. Our new device for measuring Film makes it impossible for mistakes to occur, and the Registering Tally always shows the exact number of exposures made. The covering is of the finest morocco grain leather, and the workmanship throughout is of the very best.

We recommend this Camera for the cyclist, as it can be carried safely on the frame, the same as an ordinary tool-bag. It will also be found a convenient outfit for the traveller, as it loads in daylight, is very compact and never gets out of adjustment.

## PRICE LIST.

	3½ x 3½.	4 x 5.
The Tourist Hawkeye, not loaded . . . . .	\$9.00	\$15.00
Special Sunlight Film, 12 Exposures . . . . .	.60	.85
Leather Carrying-Case . . . . .	1.50	2.00
Developing Outfit . . . . .	1.00	1.25
Printing Outfit . . . . .	1.00	1.25
Plate Attachment . . . . .		2.50

### Tripods.

The Compact,	. . . . .	\$3.00
The Hub,	. . . . .	1.75
The English Folding,	. . . . .	1.50

### Lanterns.

The Baby,	. . . . .	\$ .60
The Junior,	. . . . .	1.00
The Triumph,	. . . . .	2.50

### Developing Trays.

Electrose. Indented Rubber.

3¼ x 4¼,	. . . . .	.18	
4 x 5,	. . . . .	.25	.28
5 x 8,	. . . . .		.56
6½ x 8½,	. . . . .		.72

### Printing Frames.

Special. Regular.

3¼ x 3¼,	. . . . .	.25	
3½ x 3½,	. . . . .	.25	
3¼ x 4¼,	. . . . .		.36
4 x 5,	. . . . .	.25	.38
5 x 7,	. . . . .		.50
5 x 8,	. . . . .		.52
6½ x 8½,	. . . . .		.60

### Embossed Card Mounts.

Per doz. Per 100.

2 x 2½,	. . . . .	.10	\$ .45
3½ x 3½,	. . . . .	.15	.75
4 x 5,	. . . . .	.20	1.20
5 x 7,	. . . . .	.25	1.90

### Hawkeye Albums.

2 x 2½,	. . . . .	96 prints,	\$1.25
3½ x 3½,	. . . . .	48 "	1.25
4 x 5,	. . . . .	48 "	1.25
5 x 7,	. . . . .	48 "	1.90

### Glass Trimming Forms.

2 x 2½,	. . . . .	.30
3½ x 3½,	. . . . .	.40
4 x 5,	. . . . .	.45
5 x 7,	. . . . .	.60

### The Hub Print Mounter.

6 inch, . . . . .	\$1.00
12 inch, . . . . .	1.50

### Aristotype Jr. Printing Paper.

	Dozen.	Gross.
2 x 2¼, (2 doz. in package) . . . . .	.15	
3½ x 3½, . . . . .	.15	\$1.00
4 x 5, . . . . .	.25	1.35
5 x 7, . . . . .	.40	3.50

### Hub Blue Print Paper.

	25 sheets.	Gross.
3½ x 3½, . . . . .	.16	.80
4 x 5, . . . . .	.20	\$1.00
5 x 7, . . . . .	.35	1.75

### Dry Plates.

	Dozen.
3¼ x 3¼, . . . . .	.35
3½ x 3½, . . . . .	.35
3¼ x 4¼, . . . . .	.45
4 x 5, . . . . .	.65

### Metol Developer.

4 oz., . . . . .	.20
8 oz., . . . . .	.30
16 oz., . . . . .	.60
Metol Powder, per oz., . . . . .	.75

### Hub Toning Solution.

4 oz., . . . . .	.30
8 oz., . . . . .	.50
16 oz., . . . . .	\$1.00

### Miscellaneous.

Flash Powder, 20 boxes with fuses, . . . . .	.50
Mounting Paste, ½ pint, . . . . .	.25
Sulphite Soda Crys., per lb., . . . . .	.30
Carbonate Soda, . . . . .	.20
Dry Racks, . . . . .	.40
Ferrotypes Plates, . . . . .	.15
Developing Powders, . . . . .	.10

The Hawkeye in all styles and sizes, and  
Photographic apparatus of every description,  
manufactured by

The BLAIR CAMERA CO.,

22 Randolph St.,

BOSTON.