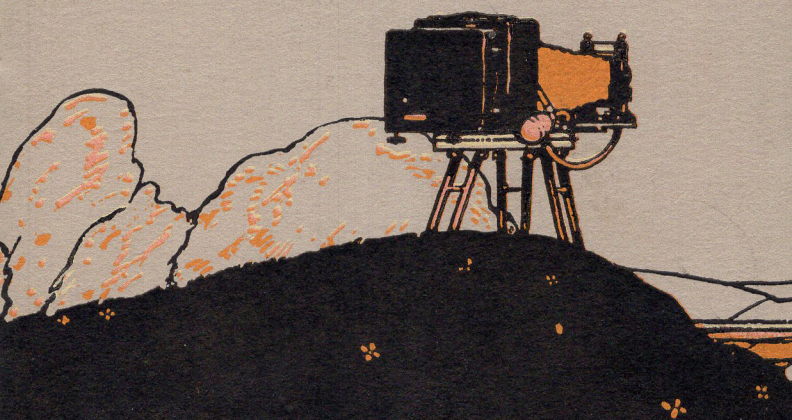


The
Cirkut
Method



Century Camera Division

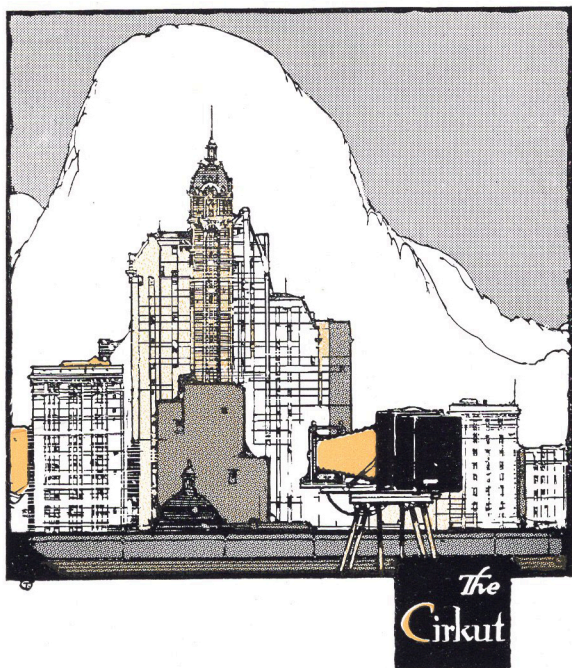
45

The
Cirkut
Method
and
Apparatus

Century
Camera
Division

Eastman Kodak Company
Rochester N.Y.

Cirkut
Photography



CIRKUT PHOTOGRAPHY is successful photography. The Professional photographer finds in the Cirkut a new and dignified means of greatly increasing his business without any of the disagreeable features that are sometimes associated with view work. There is no equipment that offers as many opportunities for original and unusual effects in outdoor composition.

Cirkut pictures are fast displacing the conventional 5 x 7, 6½ x 8½ and 8 x 10 "views" of groups, factory or landscape, and the owner of a Cirkut soon finds that his customers are willing to buy more, and—what is more important—pay more for pictures that are a departure from the old style view, the dimensions of which were suitable to very few of the subjects pictured. With the Cirkut the operator

can make his negative as long or as short as may be required to secure the best possible effect.

In every locality there are many opportunities for highly profitable Cirkut Photography—real estate development projects, real views of manufacturing plants that include everything required, without having to take the picture at such a distance that many important details are too small to be of value, and—most important of all—groups in which each person appears large enough to make everyone included, a prospective buyer. Large groups can be photographed without crowding the subjects together on precarious stands—unsatisfactory not only because of the difficulty in preparing the stand, but also on account of the fact that many in the group are behind those in the front rows. With a Cirkut everyone in the group can be photographed equally well.

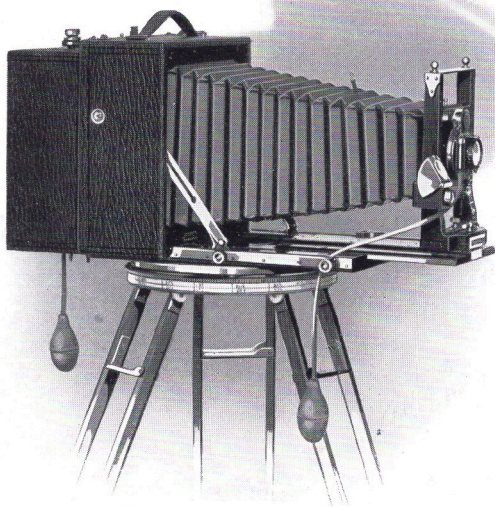
The Photographer who owns a Cirkut has an unlimited field in which to exercise his originality in creating new business—the Summer or Winter hotels want panoramic pictures to hang in other hotels; the railroads are always in the market for new and original pictures of some interesting feature on their line, and other similar work gives the photographer an exceptional opportunity to deal with big business people in a dignified and profitable way. The Cirkut means success.

Cirkuts are made in two styles and four sizes. The Cirkut Outfits Nos. 6 and 8 consist of a

high grade hand camera to which is fitted the film attachment. Either the No. 6 or No. 8 Cirkut Outfit can be used with Century Plate Holders for regular photographic work, and the Cirkut Film Attachment can be placed in position instantly without the use of tools.

The camera regularly furnished with the No. 6 Cirkut Outfit is the 5 x 7 Revolving Back Century Model 46, for 5 x 7 plates or 6½-inch Cirkut Outfit Film. The No. 8 Cirkut Outfit includes the 6½ x 8½ Revolving Back Century Model 46 for 6½ x 8½ plates or 8-inch Cirkut Outfit Film.

The Cirkut Cameras No. 10 and No. 16 differ from the Cirkut Outfits in that plates cannot be used. The No. 10 and No. 16 Cirkut Cameras take Cirkut Camera Film only, the No. 10 utilizing film 10 inches wide and the No. 16 taking film 16 inches wide.



No. 6 Cirkut Outfit

THE NO. 6 CIRKUT OUTFIT

SPECIFICATIONS

Width of Photograph.	6½ in.
Dimensions of Camera	8⅞x4⅛x8½ in.
Dimensions of Camera with Film Attachment.	8⅞x8x8½ in.
Weight of Camera	5⅜ lbs.
Weight of Camera with Film Attachment.	9 lbs.
Weight of Complete Outfit with Tripod, Top and Cases	26 lbs.
Length of Bellows	17 in.
Size of Lens Board.	2⅞x2¾ in.

PRICES

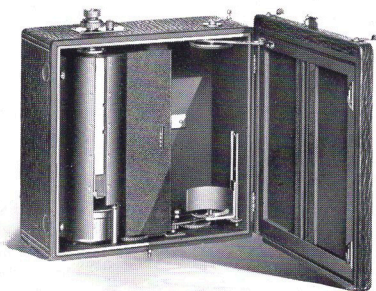
No. 6 Cirkut Outfit complete including Century Camera Model 46, 5 x 7, with Centar Lens in Automatic Shutter, one 5 x 7 double Plate Holder, one 6½-inch Cirkut Attachment, one Cirkut Tripod Top, one 6-inch Tripod Top, one No. 3 Crown Tripod, two Bulbs and Hose, Gears and two Carrying Cases to hold complete equipment	\$112.50
No. 6 Cirkut Outfit with Turner Reich Lens Series II No. 2.	157.30
No. 6 Cirkut Outfit with B. & L. Zeiss Protar Lens Series VIIa No. 9	196.00



Back of No. 6 Cirkut Outfit

THE No. 6 CIRKUT OUTFIT

The Camera supplied with this outfit is the 5 x 7 Century Model 46 with Revolving Back. This camera is constructed in the best possible manner of selected mahogany, and includes all necessary adjustments—swing back, rising and falling front, rack and pinion focusing device, as well as the double section brass bound telescopic bed which is absolutely rigid, even when the bellows is extended to its full capacity.



No. 6 Cirkut Film Box Open

The Attachment for making Cirkut negatives consists of a solidly constructed film box which contains the motor for revolving the camera on the tripod, and at the same time, winding the film from the spool to the receiving drum. On the top of the film box are located the lock nut for connecting the drum with the motor, an indicator to show how many inches of film have been used, and a rewinding handle to wind the film back to the spool. On the lower side of the film box is located a plate with openings for the shaft on the gear wheels, also an opening for the winding key. The speed of exposure is regulated by a governor contained within the film box, the speed of the governor being controlled by a dial attached to the back of the box. The speed of exposures that may be obtained with the No. 6 Cirkut Outfit are $\frac{1}{2}$, $\frac{1}{4}$, $\frac{1}{6}$, $\frac{1}{8}$, $\frac{1}{9}$, $\frac{1}{10}$ and $\frac{1}{12}$ of a second.

The starting of the motor automatically opens the exposure slot. In the back of the film box is located a concealed button which operates a perforating device to show where the film may be cut apart when more than one exposure is made on the same roll of film. The film attachment is covered with the same high grade of leather that is used on the camera.

The Lens regularly supplied is the Centar Lens in Automatic Shutter. This lens is not an Anastigmat but gives excellent results with the Cirkut as the exposure is made through a narrow slot. The rear lens cell may be removed and the front lens used alone, giving an image approximately twice the size at the same

distance as is obtained with the complete lens. The lens supplied with the No. 6 Cirkut Outfit has an equivalent focus of 8 inches.

For those who wish to obtain the best possible results we would recommend either of the Anastigmat Lenses listed.

The Cirkut Tripod Top is made of aluminum, on top of which is placed a felt covered circular platform running on small wheels which insure a smooth, easy movement to the camera. The aluminum top also carried a large circular rack which engages the gear wheel on the film box. A sliding scale marked in degrees and inches encircles the tripod top, showing at a glance exactly the length of film required for any subject. For instance, if it is necessary to include half of the complete circle or 180 degrees, and the lens employed has a focal length of 8 inches, a glance at the scale will show that $24\frac{3}{4}$ inches of film will be required.

The Tripod is the regular No. 3 Crown Tripod, an absolutely rigid four-section tripod with expansion brackets to keep the legs from becoming detached from the tripod head. This tripod when extended to its full capacity measures $5\frac{1}{2}$ feet, and the top measures 6 inches.

The Carrying Cases provide ample room for the entire outfit, one case having room for the camera, film or plate holder, and another to take the film box, tripod top and gears.

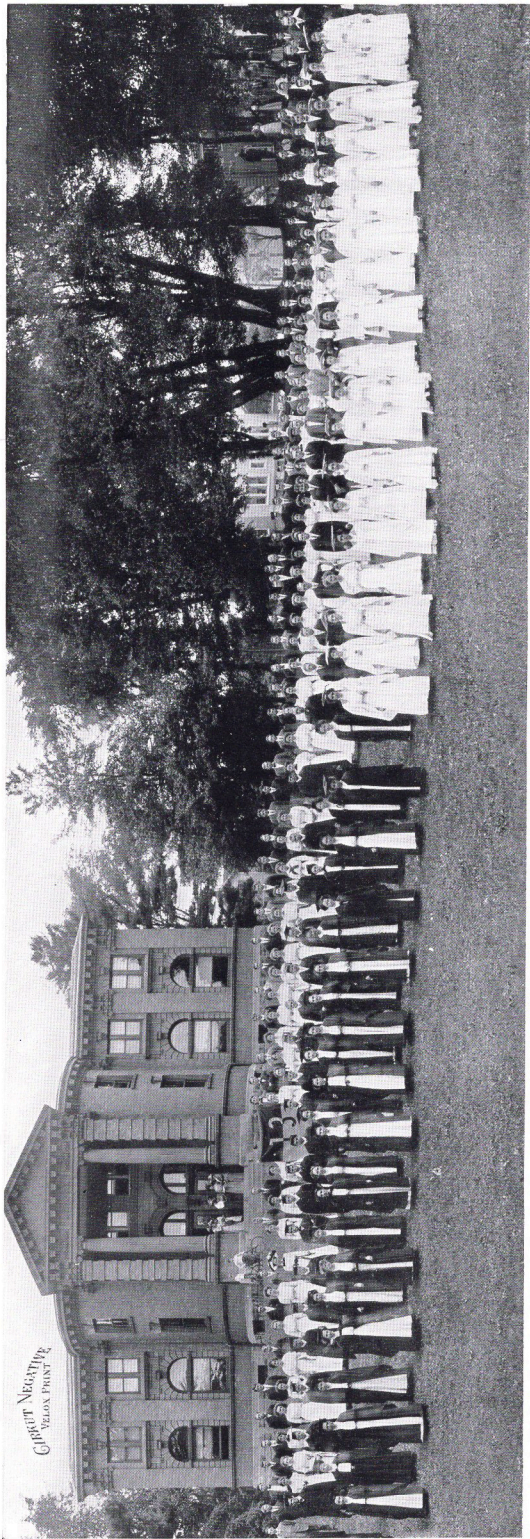
Exposure. The scale and index on the back of the film attachment show the durations of

exposure that can be given with the No. 6 Cirkut Outfit. These speeds are approximately $\frac{1}{2}$, $\frac{1}{4}$, $\frac{1}{6}$, $\frac{1}{8}$, $\frac{1}{9}$, $\frac{1}{10}$ and $\frac{1}{12}$ of a second, the duration of exposure being controlled by the rapidity with which the camera revolves on the tripod top. An accurately constructed governor contained within the film box regulates the speed.

The Cirkut can not be utilized for extremely rapid work, nor is it possible to give exposure of longer duration than one-half second.

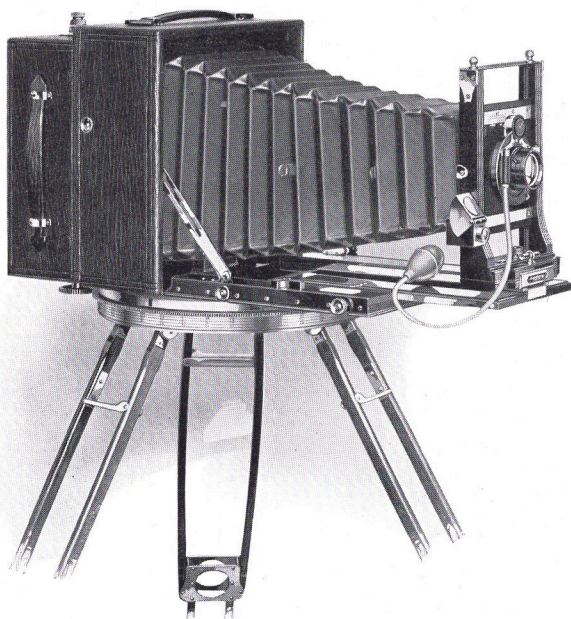
Length of Negative. Negatives of any length up to six feet may be made with the No. 6 Cirkut Outfit, the length of negative depending entirely on the distance the camera is permitted to revolve and the focal length of the lens used. It is inadvisable to attempt to make a 360 degree picture with the long front or rear single combination of the lens, on account of the possible slowing up of the motor, as well as unevenness of lighting.

For the photographer who desires an outfit for all around photographic work, the No. 6 Cirkut Outfit leaves little to be desired, as the revolving back camera supplied with this outfit can be utilized for 5x7 photographic work on plates. The revolving back which accepts a 5x7 plate holder can be instantly removed without the use of tools of any kind, and the film attachment placed in position, when the camera is ready for panoramic negatives on film.



Cirkut Negative
VELOX PRINT

Reproduced From Four-foot Negative Made With No. 10 Cirkut Camera



No. 8 Cirkut Outfit

THE NO. 8 CIRKUT OUTFIT

SPECIFICATIONS

Width of Photograph.	8 in.
Dimensions of Camera	10 $\frac{5}{8}$ x4 $\frac{3}{4}$ x10 $\frac{1}{2}$ in.
Dimensions of Camera with Film Attachment.	10 $\frac{5}{8}$ x8 $\frac{1}{4}$ x10 $\frac{1}{2}$ in.
Weight of Camera	8 $\frac{1}{2}$ lbs.
Weight of Camera with Film Attachment.	14 lbs.
Weight of Complete Outfit with Tripod, Top and Cases	38 lbs.
Length of Bellows	21 in.
Size of Lens Board.	3 $\frac{1}{2}$ x3 $\frac{5}{8}$ in.

PRICES

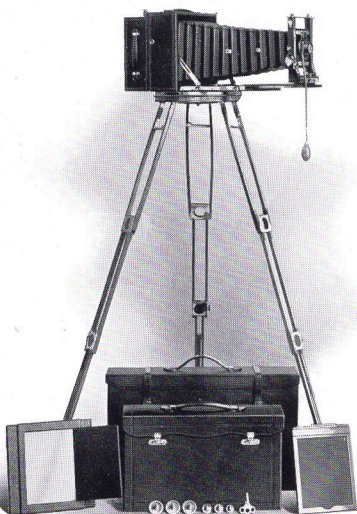
No. 8 Cirkut Outfit complete, including Century Camera Model 46, 6 $\frac{1}{2}$ x 8 $\frac{1}{2}$, with Centar Lens in Automatic Shutter, one 6 $\frac{1}{2}$ x 8 $\frac{1}{2}$ double Plate Holder, one 8-inch Cirkut Attachment, one Cirkut Tripod Top, one 6-inch Crown Tripod Top, one No. 3 Crown Tripod, one Bulb and Hose, Gears, and two Carrying Cases to hold complete equipment	\$175.00
No. 8 Cirkut Outfit with Turner Reich Lens Series II No. 4.	241.20
No. 8 Cirkut Outfit with B. & L. Zeiss Protar Series VIIa No. 12	283.00



Back of No. 8 Cirkut Outfit

THE No. 8 CIRKUT OUTFIT

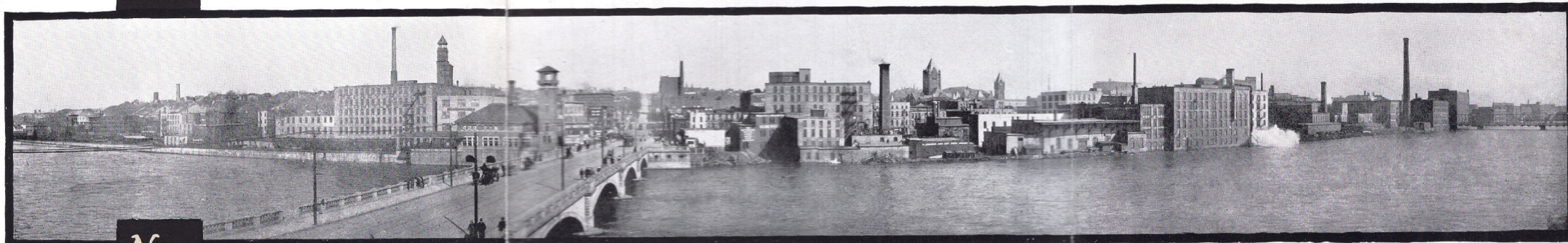
The Camera supplied with the No. 8 Cirkut Outfit is the Revolving Back Century Model 46 in the $6\frac{1}{2} \times 8\frac{1}{2}$ size. This camera is solidly constructed of selected mahogany and finished to give the best effect. Every necessary adjustment is included—rising, falling and sliding



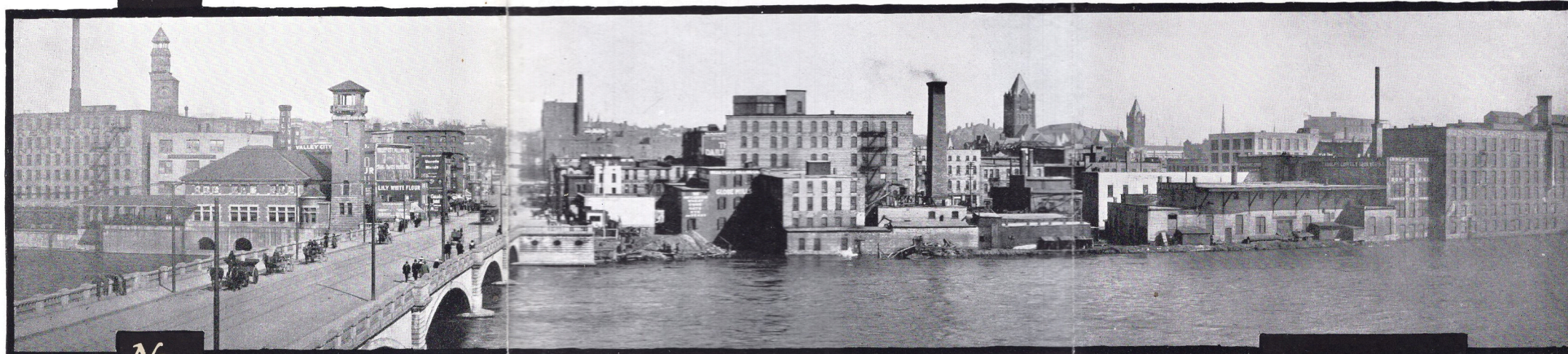
Complete No. 8 Cirkut Outfit



No. 1



No. 2



No. 3

REPRODUCTIONS above show the relative size of image obtained with the different lens combinations furnished with the No. 10 Cirkut. The top picture shows the effect when using the doublet, or complete lens. The larger image in the center picture is obtained at the same distance by using the back single element of the lens. A still larger image is secured by using the front single lens as indicated in the lower picture.

Cirkut
Negative

front, swing back and rack and pinion focusing device—nothing is sacrificed to produce a thoroughly efficient, rigid and attractive camera.

The Attachment is similar in construction to that supplied with the No. 6 except for size. The No. 8 Attachment will take Cirkut Outfit Film 8 inches wide, and will also take the 6½-inch Film supplied for the No. 6 Outfit. On top of the film box are located the rewinding handle and the lock nut for connecting the receiving drum with the motor, as well as the indicator showing the length of film used.

The speed of the motor is controlled by a small governor contained in the film box effectually performing this function, a dial upon being turned indicates the exposure of ½, ¼, ⅙, ⅛, ⅑, ⅒ and ⅓ of a second. To start the motor a key, which is sunk in the back panel of the film box, is turned in either direction; the action of turning the key automatically opens the exposure slot. A concealed button operates the perforating device to show where the film may be cut apart when more than one exposure is made on the same roll of film.

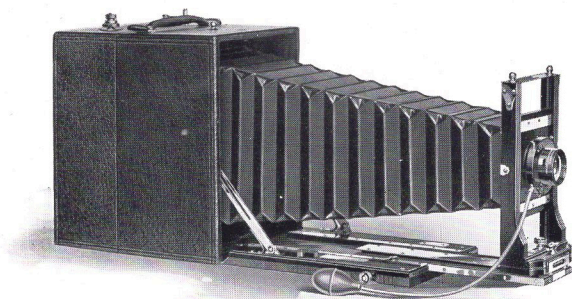
The Lens regularly furnished is the Centar Lens 6½ x 8½ in Automatic Shutter. While this lens is not an Anastigmat, it is a very excellent lens of its type, and will produce satisfactory results. The rear cell may be removed and the front element used alone, giving an image approximately twice the size of that obtained with the complete lens at the same

distance. The Centar Lens supplied with the No. 8 Cirkut Outfit has an equivalent focus of eleven inches.

The Cirkut Tripod Top is made of aluminum with a light aluminum platform traveling on small wheels to insure the smooth and easy operation of the camera. A sliding scale which encircles the tripod top is supplied with the No. 8 Cirkut Outfit. This enables the operator to determine instantly the amount of film required for negatives of different lengths with lenses of various foci. For instance, if the negative to be made includes an angle of 120 degrees and the single lens having a focus of 18 inches is used to make the picture, the scale will show that 36 inches of film will be required for the negative.

Length of Negative. The No. 8 Cirkut Outfit will make negatives of any length up to 8 feet, the length of the negative depending upon the distance the camera is permitted to revolve and the focal length of the lens used. It is inadvisable to make a negative including the complete circle with the long focus front or rear elements of the lens, not only on account of the possibility of the motor running slowly at the end of the exposure, but also on account of the uneven lighting.

The No. 8 Cirkut Outfit is particularly valuable to the Professional Photographer who wishes to utilize the outfit for $6\frac{1}{2} \times 8\frac{1}{2}$ work on plates as well as the making of panoramic negatives.



No. 10 Cirkut Camera

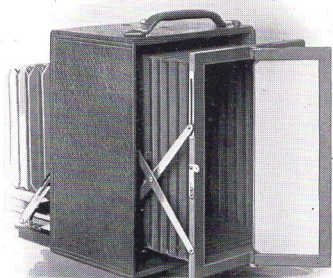
THE NO. 10 CIRKUT CAMERA

SPECIFICATIONS

Width of Photograph.	10 in.
Dimensions	9x12x12 in.
Weight of Complete Equipment	46 lbs.
Length of Bellows	27 in.
Size of Lens Board.	3½x3⅝ in.

PRICES

No. 10 Cirkut Camera complete, including Turner Reich Lens Series II in Double Valve Shutter, one F. & S. Professional Tripod, one Cirkut Tripod Top, one Bulb and Hose, Fans, Gears, and two Carrying Cases to hold complete equipment . . .	\$290.00
No. 10 Cirkut Camera without Lens and Shutter . . .	220.00



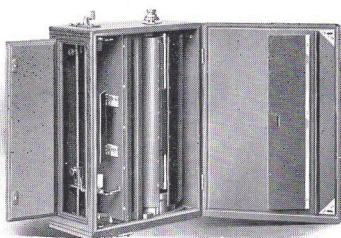
Showing focusing back of No. 10 Cirkut

THE No. 10 CIRKUT CAMERA

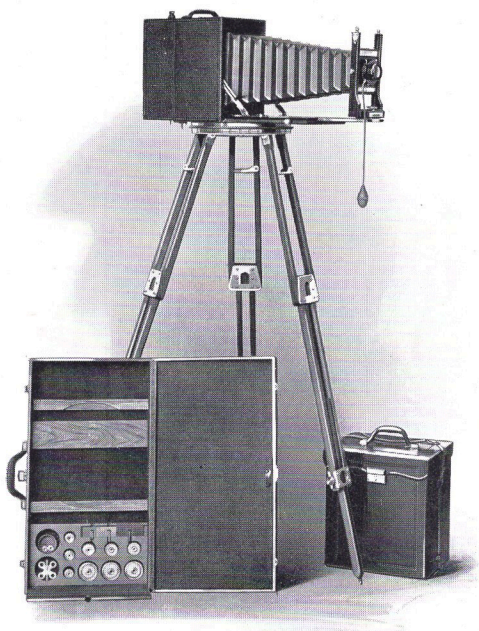
The No. 10 Cirkut Camera is constructed for Panoramic Photography only, and is not intended for use with plates.

The Camera is solidly constructed of the best mahogany and both the wood and metal parts are highly finished giving an unequalled richness of appearance. The heavy brass bound telescopic bed is operated by rack and pinion and can be locked in any desired position, the focusing pinion itself acting as a lock.

The Film Box containing the motor for driving the mechanism is covered with the same high grade of leather that is used on the camera, and constructed with the utmost accuracy to



No. 10 Cirkut Film Box open



No. 10 Cirkut complete

insure an even and constant motion of camera and receiving drum. On the top of the film box are located the lock nut, for engaging the receiving drum with the motor, and the handle for winding the film back on the spool after exposure.

The lower side of the film box carries the spindles for the gear wheels and fans, and the releasing device for starting and stopping the motor. A concealed button operates a device for perforating the film.

The Lens regularly supplied with the No. 10 Cirkut Camera is the Turner Reich Lens Series II, f. 7. 5, made especially for the Cirkut. This lens can be used complete, or either the front or rear lenses may be used singly. The complete lenses or doublet, have a focus of $10\frac{1}{2}$ inches, while the front and rear elements have foci of 24 inches and 18 inches respectively.

The relative size of image obtained with the doublet, front and rear lenses, are shown on pages 14 and 15.

The Tripod supplied with the No. 10 Cirkut is the F. & S. Professional Tripod having a total length, when extended, of 4 feet 10 inches, and when folded, 24 inches. It is constructed with the utmost rigidity, effectually eliminating the possibility of vibration. The Cirkut Tripod top is made of aluminum, the portion carrying the camera traveling on small wheels. A heavy brass rack extending around the top engages the pinion for driving the camera.

To determine the length of film required for exposures embracing any number of degrees, a scale marked in degrees and inches is attached to the tripod top.

Two Carrying Cases provide ample room for the entire equipment.

Exposures. Fans are provided for exposures $\frac{1}{3}$, $\frac{1}{5}$ and $\frac{1}{10}$ of a second.

Length of Negatives. Negatives of any length up to twelve feet may be made with the No. 10 Cirkut Camera. The length of negative depends on the distance the camera is permitted to revolve and the focal length of the lens employed.

The Film supplied for Cirkut Camera No. 10 is Eastman Daylight-loading Film in spools 10 inches wide. This instrument will also accept Cirkut Camera Film in rolls 6 inches and 8 inches wide, as listed on page 26. *Film for Cirkut Outfits No. 6 and No. 8 cannot be used in Cirkut Cameras No. 10 and No. 16.*

For the Professional Photographer whose business demands large panoramic photographs, the No. 10 Cirkut Camera answers every purpose. No. 10 Cirkut photographs printed with a 2-inch white margin present a very striking appearance.



No. 16 Cirkut Camera

THE No. 16 CIRKUT CAMERA

SPECIFICATIONS

Width of Photograph	16 in.
Dimensions	11 $\frac{1}{4}$ x14 $\frac{1}{4}$ x18 in.
Weight of Complete Equipment	90 lbs.
Length of Bellows.	39 in.
Size of Lens Board	5 x 5 in.

PRICES

No. 16 Cirkut Camera complete, including
 Turner Reich Lens Series II in Double
 Valve Shutter, one F. & S. Professional
 Tripod, one Cirkut Tripod Top, one Bulb
 and Hose, Fans, Gears, and three Carrying
 Cases to hold complete equipment . . . \$425.00

No. 16 Cirkut Camera, without Lens and Shutter 350.00

THE No. 16 CIRKUT CAMERA

The No. 16 Cirkut is the largest of the Cirkut Cameras. This instrument makes a negative 16 inches wide and of any length up to 20 feet. This camera is intended for big work and there are many large business concerns spending money for expensive lithographs who would rather have an actual photograph of their buildings, grounds, or docks, provided they could get the kind of photograph they want. The No. 16 Cirkut will make it. Business men are fast realizing that a photograph carries an impression of truth and sincerity that can never be conveyed by any wash drawing or mechanical process. The photographer with a Cirkut large enough for big work will find this a decidedly profitable part of his business.

The Camera is similar in construction to that supplied with the No. 10 Cirkut, and is intended for Panoramic Photography only. It is constructed with the utmost rigidity and is fitted with rising and falling front, tilting lens board, brass bound telescopic bed, and rack and pinion focusing device.

The Film Box contains a powerful motor for revolving the camera and at the same time driving the receiving drum. The top of the film box carries the rewinding handle and the lock nut for engaging the receiving drum with the motor. On the under side of the film box are located spindles for the fans, controlling the duration of exposure, and for the gears which rotate the camera on the tripod top. A concealed button in the back of the film box

operates a perforating device indicating where the film should be cut apart when more than one exposure is made on the same roll of film.

The Lens supplied with the No. 16 Cirkut is the Turner Reich Anastigmat Series II, f. 7. 5, which is made especially for this camera. The complete lens has a focal length of 15 inches, while the front and rear single elements have foci of 36 and 24 inches respectively.

The Tripod supplied with the No. 16 Cirkut is the F. & S. Professional Tripod described on page 21, and the Cirkut Tripod Top is constructed in the same manner as that furnished with the No. 10, with the exception that it is larger and heavier to carry the No. 16 Camera.

Three Carrying Cases are furnished to carry the entire outfit.

Exposures. Fans are provided for exposures $\frac{1}{3}$, $\frac{1}{5}$ and $\frac{1}{10}$ of a second.

Length of Negative. Negatives of any length up to 240 inches may be made with the No. 16 Cirkut Camera.

CIRKUT FILM

So important is the work ordinarily done with a Cirkut Camera, that in making pictures with such an outfit, perhaps more than in the case of any other type of camera, every factor which might affect the final result must be met to the end that every exposure made shall become a satisfactory negative.

The mechanical construction of the Cirkut Camera leaves nothing to be desired in opera-

tion and efficiency. There remains only the factor of the photographic medium on which the exposures are to be made.

This question is wholly and definitely settled by the Kodak N. C. Film, which is supplied for Cirkut Cameras and which is the only medium that can adequately meet the requirements of Cirkut Camera photography.

Those qualities that make Eastman N. C. the best film for general use, which have made it indispensable to 95 per cent. of the makers of motion pictures—probably the most severe test to which a film could be put—are the same qualities which make it necessary for the best results in Cirkut photography.

It is *properly* orthochromatized. The unexampled experience of the Eastman Kodak Co., with both plates and films enables them to make and maintain the most perfectly balanced film in the rendering of color values.

It has extreme speed or it could not be used by moving picture men, whose every exposure is, of course, a snap shot, often under poor light conditions.

It is free from halation and mechanical defects, and has a great latitude, taking care of all errors of judgment in exposure within reasonable bounds.

And above all, is its unvarying dependability, the certainty that you have that every roll you use has all these qualities in the same degree as every other roll. It is that dependability that makes Kodak film the invariable choice of those who gather the news of the world and those who cannot afford to fail.

Films of lengths not regularly listed are spooled to order, which always involves a delay in making shipment. Films of lengths not listed will be billed at the next higher regularly listed price and are not subject to return.

PRICES

Film for No. 6 Cirkut Outfit.

6½ in. x 3 ft.	Per Roll, \$0.80
6½ in. x 6 ft.	“ “ 1.60
6½ in. x 10 ft.	“ “ 2.60

For No. 8 Cirkut Outfit.

6½ in. x 3 ft.	Per Roll, \$0.80
6½ in. x 6 ft.	“ “ 1.60
6½ in. x 10 ft.	“ “ 2.60
8 in. x 4 ft.	“ “ 1.30
8 in. x 8 ft.	“ “ 2.60

For No. 10 Cirkut Camera.

6 in. x 5 ft.	Per Roll, \$1.20
6 in. x 10 ft.	“ “ 2.40
6 in. x 15 ft.	“ “ 3.60
8 in. x 10 ft.	“ “ 3.20
8 in. x 15 ft.	“ “ 4.80
8 in. x 20 ft.	“ “ 6.40
10 in. x 4 ft.	“ “ 1.60
10 in. x 6 ft.	“ “ 2.40
10 in. x 10 ft.	“ “ 4.00
10 in. x 15 ft.	“ “ 6.00
10 in. x 20 ft.	“ “ 8.00

For No. 16 Cirkut Camera.

8 in. x 10 ft.	Per Roll, \$3.20
8 in. x 15 ft.	“ “ 4.80
8 in. x 20 ft.	“ “ 6.40
10 in. x 4 ft.	“ “ 1.60
10 in. x 6 ft.	“ “ 2.40
10 in. x 10 ft.	“ “ 4.00
10 in. x 15 ft.	“ “ 6.00
10 in. x 20 ft.	“ “ 8.00
12 in. x 6 ft.	“ “ 2.90
12 in. x 10 ft.	“ “ 4.80
12 in. x 15 ft.	“ “ 7.20
16 in. x 6 ft.	“ “ 3.85
16 in. x 10 ft.	“ “ 6.40
16 in. x 20 ft.	“ “ 12.80

Film for Cirkut Outfits Nos. 6 and 8 cannot be used in Cirkut Cameras Nos. 10 and 16; nor can film for Cirkut Cameras Nos. 10 and 16 be used with Cirkut Outfits Nos. 6 and 8.

Film for Cirkut Outfits is wound differently from that supplied for Cirkut Cameras. *When ordering film it is always necessary to specify whether film is intended for use with Cirkut Cameras Nos. 10 or 16, or for the Cirkut Outfits Nos. 6 or 8.*

CIRKUTS WITHOUT LENSES

When customers have lenses of suitable focal length which they wish fitted to Cirkut Cameras or Outfits, it is necessary for us to have the lenses in our possession so that the fitting can be accurately done. This work involves the making of special gear wheels and scales, as well as actual photographic tests on film in the camera. When customers send us their lenses for fitting, we make a charge of two dollars per lens combination, which price includes the necessary gears and scales.

CIRKUT PRINTING FRAMES

Price, without Glass.

8 in. x 4 ft.	\$ 7.50
8 in. x 6 ft.	10.00
10 in. x 4 ft.	8.00
10 in. x 6 ft.	12.00
16 in. x 6 ft.	20.00
16 in. x 10 ft.	25.00

CENTURY 12-FOOT TRIPOD

Some subjects make it necessary to elevate the camera to a considerable distance to secure the best results. The Century 12-foot Tripod fully answers this purpose as it is high enough to answer all practical purposes, and is rigidly constructed to prevent excessive vibration. It is fitted with stays to prevent the legs from spreading, and when folded measures 53 inches.

PRICE

Century 12-ft. Tripod complete	\$18.00
Century 12-ft. Tripod without Top.	15.00

DEVELOPING AND PRINTING

To those who do not choose to do their own developing or printing we are prepared to offer the advantages of most unexcelled facilities for doing any of this work. Film sent to us for development or printing should be carefully packed and plainly marked with sender's name.

PRICES OF DEVELOPING

Length of Negative	6 in. wide	6½ in. wide	8 in. wide	10 in. wide	16 in. wide
24 in.	\$0.40	\$0.40	\$0.50	\$0.60	\$1.00
30 in.	.45	.50	.60	.75	1.20
36 in.	.55	.60	.75	.90	1.50
42 in.	.65	.70	.85	1.05	1.70
48 in.	.75	.80	1.00	1.20	2.00
54 in.	.85	.90	1.10	1.35	2.20
60 in.	.90	1.00	1.20	1.50	2.40
66 in.	1.00	1.10	1.35	1.65	2.70
72 in.	1.10	1.20	1.45	1.80	2.90

Larger sizes at proportionate prices.

PRICES OF PRINTING

Length of Print	6 in. wide	6½ in. wide	8 in. wide	10 in. wide	16 in. wide
24 in.	\$0.85	\$0.95	\$1.15	\$1.40	\$2.30
30 in.	1.05	1.15	1.40	1.75	2.80
36 in.	1.30	1.40	1.70	2.10	3.40
42 in.	1.50	1.60	2.00	2.45	4.00
48 in.	1.70	1.85	2.25	2.80	4.50
54 in.	1.90	2.05	2.55	3.15	5.10
60 in.	2.10	2.25	2.80	3.50	5.60
66 in.	2.35	2.50	3.10	3.85	6.20
72 in.	2.55	2.75	3.40	4.20	6.80

Some subjects such as landscapes, marines, etc., are particularly effective when printed on Artura Carbon Green. No extra charge is made for prints on this paper.

TERMS

All quotations are net except to dealers who carry our goods in stock. For the convenience of our customers we suggest they purchase from a dealer in photographic supplies, as by so doing they can effect a saving in both time and transportation charges.

CENTURY CAMERA DIVISION

Eastman Kodak Co.

ROCHESTER :: :: NEW YORK

The
Cirkut
camera



The
Cirkut
Method

