

The Pinnacle of Optical Perfection Canon FD Lenses

Canon
FD
LENSES

English Edition



Canon FD LENSES

Since their introduction in 1970, the Canon FD lenses have become recognized as the finest lenses in the world by leading professional and advanced amateur photographers. The current series of about 40 lenses, consisting of FD and FL lenses, range in focal length from 7.5mm to 5200mm. The FD lenses can be mounted not only on the Canon F-1 and Canon FTb cameras, but also on the new Canon TLb.

1. Canon Lens Fisheye 7.5mm F5.6 S.S.C.

An equidistant projection type of fisheye lens, which can be used to see a 180° field-of-view through the viewfinder without fixing the mirror upward.

2. Canon Lens Fisheye FD 15mm F2.8 S.S.C.

This is a fisheye lens for general photography with an angle-of-view of 180°. It is the smallest fisheye lens in the world.

3. Canon Lens FD 17mm F4 S.S.C.

An incomparable 17mm wide-angle lens, providing distortion-free, sharp images from corner to corner. A built-in Floating System eliminates curvature of field. Can be used for copy work.

4. Canon Lens FD 20mm F2.8 S.S.C.

Despite its short focal length of 20mm, this super-wide-angle lens has the world's fastest lens speed of F2.8.

5. Canon Lens FD 24mm F2.8 S.S.C.

Distortion- and flare-free, this lens delivers high contrast and high resolving power even at full-aperture opening f/stop.

6. Canon Lens FD 28mm F3.5 S.C.

Compact in size, lightweight, and delivering a sharp image. Easy-to-use, hand-held picture-taking.

7. Canon Lens FD 35mm F3.5 S.C.

An easy-to-use, and compact, wide-angle lens for snapshot shooting. It has a distance coupling pin for CAT matching needle-type automatic flash photography system.

8. Canon Lens FD 35mm F2 S.S.C.

The fastest lens in Canon's wide-angle lens series. Features minimized flare and superior color balance. It has a distance coupling pin to permit CAT system.

9. Canon Lens TS 35mm F2.8 S.S.C.

A special wide-angle lens, which makes it possible to control perspective and depth-of-field by tilting and shifting. An incomparable lens in which flare is completely eliminated at full aperture opening f/stop.

10. Macro Canon Lens FD 50mm F3.5 S.S.C.

An all-around lens, which covers the entire shooting range from ordinary photography to close-up and 1:1 size photography in copy work.

11. Bellows Lens FLM 100mm F4

Designed exclusively for use with a bellows. Its focal length delivers natural perspective.

12. Canon Lens FD 50mm F1.8 S.C.

A very reasonably priced standard lens. It is an all-around lens with high delineation power even during close distance photography. It has a distance coupling pin to permit the CAT system.

13. Canon Lens FD 50mm F1.4 S.S.C.

Provides clear images throughout the entire aperture range. It has a distance coupling pin to permit the CAT system.

14. Canon Lens FD 55mm F1.2 S.S.C.

A high quality, large aperture standard lens with the fastest lens speed in Canon FD lens series. It extends shooting range under low light level conditions.

15. Canon Lens FD 55mm F1.2 AL S.S.C.

The highest quality large aperture standard lens using an aspherical surface, which provides superior image delineation power even at full-aperture under low light-level conditions.





1



16



3



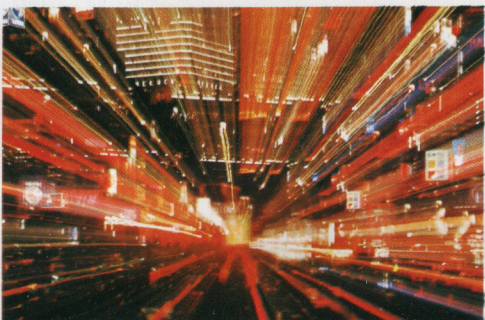
18



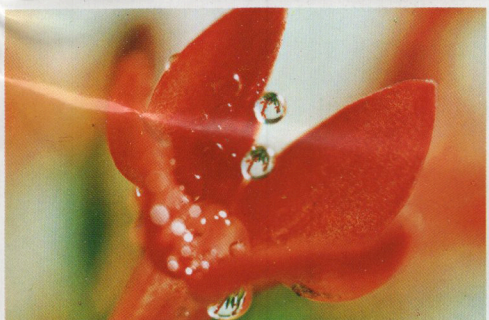
21



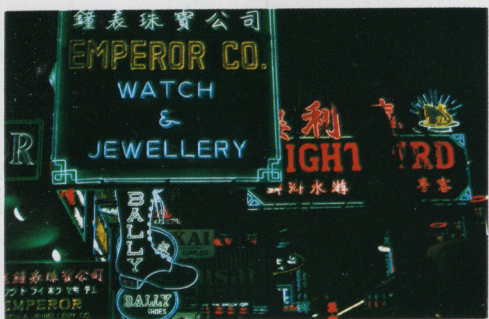
8



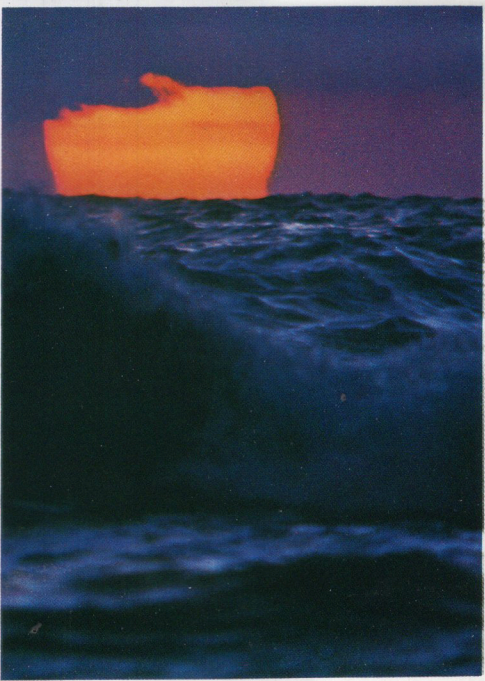
23



10



15



28

16. Canon Lens FD 100mm F2.8 S.S.C.

One of the easiest-to-use telephoto lenses, with the added advantages of being lightweight and compact. Its telephoto ratio of 1:0.93 makes possible an overall length of 57mm, the size of most standard lenses. Very sharp especially at close-focusing distances. Extremely suited for taking portraits.

17. Canon Lens FD 135mm F3.5 S.C.

A very compact and lightweight 135mm telephoto lens—a proven favorite with amateurs and professionals alike.

18. Canon Lens FD 135mm F2.5 S.C.

This lens is the fastest of all the FD telephoto lenses. It is very compactly designed, having a short telephoto ratio of 1:0.98. Suitable for indoor sports, theater and live stage performances.

19. Canon Lens FD 200mm F4 S.S.C.

The most compactly designed 200mm telephoto lens of all lenses in the 200mm class. Because of compensation of field curvature and other aberrations, high contrast and a sharp image are obtained throughout the entire focusing range.

20. Canon Lens FD 300mm F5.6 S.C.

A high performance, compact telephoto lens with a short telephoto ratio of 1:0.72. Has a rotating tripod attachment collar and a built-in lens hood. This lens also gives stabilized performance under temperature fluctuations down to -30°C .

21. 22. Canon Lenses FL-F 300mm F5.6 and FL-F 500mm F5.6

Unexcelled high quality super-telephoto lenses, using large size artificial fluorite crystals in their optical systems. This lens material makes it possible to completely eliminate secondary spectrum and curvature of field. These two Canon lenses are designed to be the most compact in size of all Canon's telephoto lens series.

23. Canon Lens FD 100-200mm F5.6 S.C.

A compact, and lightweight zoom lens. Its zoom ratio is adjusted to 2:1 to facilitate convenient operation. The built-in automatic aperture diaphragm mechanism further strengthens its snapshot shooting performance. Also suitable for shooting scenery and sports.

24. Canon Lens FL 85-300mm F5

A high performance zoom lens with a high zoom ratio of approximately 3.5, the fastest lens in this class of zoom lenses. Superior image delineation power is delivered through the entire focusing range, even in corner areas of the lens.

25. Canon Lens FL 55-135mm F3.5

A very convenient zoom lens, which can be used as either as a standard lens or telephoto lens. This lens is designed to satisfactorily compensate for variable aberrations at any focal length.

26. 27. 28. 29. Canon Lenses FL 400mm F5.6, FL 600mm F5.6, FL 800mm F8 and FL 1200mm F11 S.S.C.

Front convertible-type super-telephoto lenses. By simply changing the front component, the focal length can be adjusted to 400mm, 600mm, 800mm and 1200mm. The FL 800mm F8, in particular, is the world's shortest super-telephoto lens in its class. The rear components, automatic aperture diaphragm mechanism and focusing adjusting device are built into the optional **Canon Focusing Unit**.



Lens	Type	Angle of View	Aperture Diaphragm Control	Minimum Aperture	Distance Scale		Attachment		Hood	Length		Weight	
					In meters	In feet	Filter	Cap		(mm)	(in.)	(g)	(lb.-oz.)
Fisheye 7.5mm F5.6 S.S.C.	Special	180°	Manual	22	—	—	Built-in	Exclusive	—	67.8	2 $\frac{11}{16}$	390	13 $\frac{3}{4}$
***Fisheye FD15mm F2.8 S.S.C.	Special	180°	Automatic	16	3-0.3	10-1	Built-in	Exclusive	Built-in	60.5	2 $\frac{3}{8}$	500	1-2 $\frac{5}{8}$
FD 17mm F4 S.S.C.	Super-wide-angle	104°	Automatic	22	3-0.25	10-0.9	72	75	—	56.0	2 $\frac{3}{16}$	485	1-1
***FD 20mm F2.8 S.S.C.	Super-wide-angle	94°	Automatic	22	3-0.25	10-0.9	72	75	Exclusive	58.0	2 $\frac{1}{4}$	310	12 $\frac{11}{16}$
FD 24mm F2.8 S.S.C.	Super-wide-angle	83°	Automatic	16	3-0.3	10-1	55	C-55	†BW-55B	52.5	2 $\frac{1}{16}$	350	12 $\frac{3}{8}$
FD 28mm F3.5 S.S.C.	Super-wide-angle	75°	Automatic	16	3-0.4	10-1.5	55	C-55	†BW-55B	43.0	1 $\frac{15}{16}$	260	9
*FD 35mm F3.5 S.S.C.	Wide-angle	64°	Automatic	16	3-0.4	10-1.5	55	C-55	†BW-55A	49.0	1 $\frac{15}{16}$	295	10 $\frac{3}{8}$
***TS 35mm F2.8 S.S.C.	(Tilt & Shift)	62.6°/79°	Manual	22	3-0.3	10-1	58	C-58	Exclusive	72.0	2 $\frac{3}{16}$	590	1-4 $\frac{13}{16}$
*FD 35mm F2 S.S.C.	Wide-angle	64°	Automatic	16	3-0.3	10-1	55	C-55	†BW-55A	60.0	2 $\frac{3}{8}$	385	13 $\frac{1}{2}$
***FD 50mm F3.5 S.S.C.	Macro	46°	Automatic	22	3-23.2(cm)	10-9.1(in)	55	C-55	—	59.5	2 $\frac{3}{16}$	295	10 $\frac{3}{8}$
*FD 50mm F1.8 S.C.	Standard	46°	Automatic	16	10-0.6	30-2	55	C-55	†BS-55	44.5	1 $\frac{3}{4}$	300	10 $\frac{9}{16}$
*FD 50mm F1.4 S.S.C.	Standard	46°	Automatic	16	10-0.45	30-1.5	55	C-55	†BS-55	49.0	1 $\frac{15}{16}$	350	12 $\frac{3}{8}$
FD 55mm F1.2 S.S.C.	Standard	43°	Automatic	16	10-0.6	30-2	58	C-58	†BS-58	52.5	2 $\frac{1}{16}$	530	2 $\frac{11}{16}$
FD 55mm F1.2AL S.S.C.	Standard	43°	Automatic	16	10-0.6	30-2	58	C-58	†BS-58	55.0	2 $\frac{3}{16}$	575	1-4 $\frac{1}{4}$
***FD 85mm F1.8 S.S.C.	Long-focus	29°	Automatic	22	20-1	60-3.5	55	C-55	†BT-55	—	—	445	15 $\frac{11}{16}$
FLM 100mm F4	Macro	24°	Automatic	22	—	—	48	50	—	43	1 $\frac{11}{16}$	220	7 $\frac{3}{8}$
FD 100mm F2.8 S.S.C.	Telephoto	24°	Automatic	22	10-1	30-3.5	55	C-55	†BT-55	57.0	2 $\frac{1}{4}$	375	13 $\frac{1}{4}$
FD 135mm F3.5 S.C.	Telephoto	18°	Automatic	22	30-1.5	100-5	55	C-55	†BT-55	83.0	3 $\frac{1}{4}$	480	1-5 $\frac{1}{16}$
FD 135mm F2.5 S.C.	Telephoto	18°	Automatic	22	30-1.5	100-5	58	C-58	Built-in	91.0	3 $\frac{9}{16}$	650	1-6 $\frac{5}{16}$
FD 200mm F4 S.S.C.	Telephoto	12°	Automatic	22	30-2.5	100-8	55	C-55	Built-in	133.0	5 $\frac{1}{4}$	700	1-8 $\frac{1}{16}$
FD 300mm F5.6 S.C.	Telephoto	8°	Automatic	22	50-4	200-13	58	C-58	Built-in	173.0	6 $\frac{13}{16}$	1050	2-5
***FD 35-70mm F2.8-3.5 S.S.C.	Zoom	64°-31°	Automatic	22	10-1	30-3.5	58	Exclusive	Exclusive	114.5	4 $\frac{1}{2}$	600	1-5 $\frac{3}{16}$
FL 55-135mm F3.5	Zoom	43°-18°	Automatic	22	30-2	100-7	58	C-58	S-60	—	—	790	1-11 $\frac{1}{8}$
FD 100-200mm F5.6 S.C.	Zoom	24°-12°	Automatic	22	30-2.5	100-8	55	C-55	Built-in	173.0	6 $\frac{13}{16}$	805	1-12 $\frac{1}{4}$
FL 85-300mm F5	Zoom	29°-8°	Automatic	22	50-4	200-13	72	75	Built-in	273.5	10 $\frac{3}{4}$	1740	3-13 $\frac{3}{8}$
***FD 85-300mm F4.5 S.S.C.	Zoom	29°-8°	Automatic	22	30-2.5	100-8	Series IX	Exclusive	Built-in	247.5	9 $\frac{3}{4}$	1940	4-4 $\frac{7}{16}$
FL-F 300mm F5.6	Telephoto	8°	Automatic	22	50-4	200-13	58	60	Built-in	168.0	6 $\frac{11}{16}$	850	1-13 $\frac{5}{16}$
FL-F 500mm F5.6	Super-telephoto	5°	Automatic	22	200-10	600-33	95	106	Built-in	300.0	11 $\frac{13}{16}$	2700	5-15 $\frac{1}{4}$
**FL 400mm F5.6	Super-telephoto	6.2°	Automatic	32	30-4.5	100-15	††48	82	Exclusive	338.0	1'1 $\frac{15}{16}$	3890	8-9 $\frac{9}{16}$
**FL 600mm F5.6	Super-telephoto	4.1°	Automatic	32	100-10	300-35	††48	114	Built-in	448.0	1'5 $\frac{5}{8}$	5000	11-3 $\frac{3}{8}$
**FL 800mm F8	Super-telephoto	3.1°	Automatic	32	100-18	300-60	††48	114	Built-in	508.0	1'8	5360	11-13 $\frac{1}{16}$
**FL 1200mm F11 S.S.C.	Super-telephoto	2.1°	Manual	64	300-40	1000-130	††48	114	Built-in	748.0	2'9 $\frac{7}{16}$	—	—

* Equipped with a coupling pin to Canon Automatic Tuning System.

** Front component interchangeable type. Focusing adapter (2-element, 1-component, FL automatic diaphragm, with A-M ring).

*** Will be marketed in the near future.

■ The Canon Lens FL 5200mm F14 is available by special order.

† FD lens hoods are of bayonet mount.

†† Filter is of insertion type with holder.



Canon

CANON INC. 9-9, Ginza 5-chome, Chuo-ku, Tokyo 104, Japan

U.S.A. — CANON U.S.A., INC.
10 Nevada Drive, Lake Success, Long Island, N.Y. 11040, U.S.A.

MANHATTAN — CANON U.S.A., INC.
600 Third Avenue, New York, N.Y. 10016, U.S.A.

CHICAGO — CANON U.S.A., INC.
407 Fullerton Avenue, Elmhurst, Illinois 60126, U.S.A.

LOS ANGELES — CANON OPTICS & BUSINESS MACHINES CO., INC.
3113 Wilshire Blvd., Los Angeles, California 90010, U.S.A.

CANADA — CANON OPTICS & BUSINESS MACHINES CANADA LTD.
3245 American Drive, Mississauga, Ontario, Canada

EUROPE & AFRICA — CANON AMSTERDAM N.V.
Gebouw 70, Schiphol, Groot, Holland

CENTRAL & SOUTH AMERICA — CANON LATIN AMERICA, INC.
Apartado 7022, Panama 5, Panama

