



SUPER IKONTA

with
**ZEISS
TESSAR
LENSES**

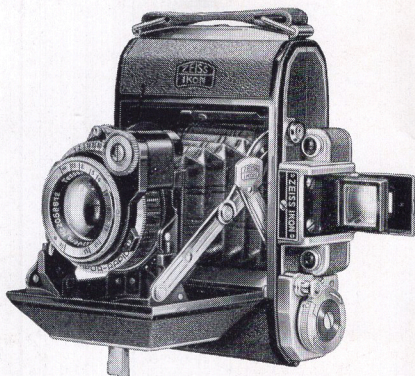
Auto-focusing
CAMERAS

Auto-Focusing

Super Ikonta

Models

A C & D



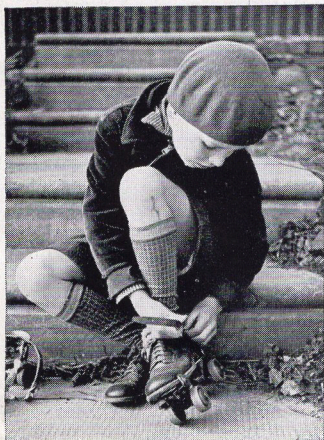
SUPER IKONTA A SPECIAL
1 $\frac{5}{8}$ " x 2 $\frac{1}{4}$ "
Description on page 8

Every feature needed to assure good pictures has been included in the Zeiss Ikon Super Ikonta A, C and D cameras, together with new devices that add ease and speed to their operation, and that guard against error and forgetfulness. In smoothness and convenience of handling, a new high point in the design and manufacture of precision rollfilm cameras has been attained.*

Ease of Operation

Operation is swift, quiet and unobtrusive. At a touch upon the locking button, both lens and finder slip smoothly into picture-taking position. Controls are conveniently centered under the fingertips on top of the camera, including the shutter release — a feature originally introduced with the Contax camera. Shutter speeds and aperture openings are clearly engraved and easily set. The cameras are well balanced and easily handled.

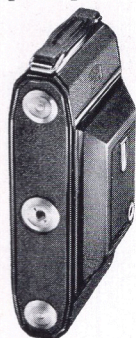
**Super Ikonta B is of different design.
Special catalog upon request.*



This shows the size of picture taken by Super Ikonta A; also the size taken by Super Ikonta C and C Special, when half-size insert mask is used.

All-Metal Body

The camera bodies are of all-metal construction, compact, sturdy, and light. The design is attractive but conservative. They are handsomely finished in black leather and chromium — cameras that will always be in good taste. The back is hinged, and film windows have substantial metal covers that give complete protection against fogging. The camera may be



Super Ikonta cameras are compact, strong, and handsomely finished.

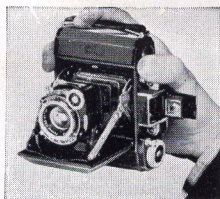
smoothly closed with the lens *at any focal setting* — even set for extreme close-ups — an important convenience. The tripod sockets have standard U. S. threads.

The Range-Finder

An optical range-finding (or auto-focusing) device, that is directly coupled to the lens, is an integral part of the Super Ikonta cameras. By means of a clearly visible superimposed image, even a beginner can readily focus exactly on any point from extreme close-up to infinity. So accurate is this device that the lens may be confidently used at full aperture when needed. Guesswork is eliminated — there are no “out-of-focus” misses. Construction is simple, rugged, and of extreme precision, and the whole is protected by metal housings. This device is both an outstanding convenience and an economy.



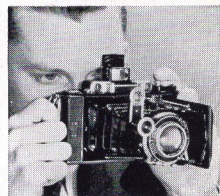
When the double image (left) is superimposed (right) the subject is in exact focus.



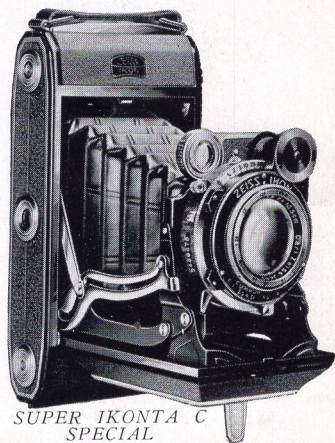
1 *Pressing button automatically opens camera and Albada view-finder.*



2 *Turn of a milled wheel automatically focuses range-finder and lens.*



3 *The scene is quickly framed in the Albada view-finder.*



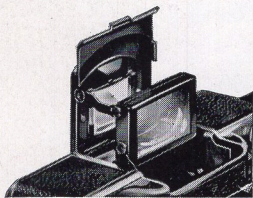
**SUPER IKONTA C
SPECIAL
2 1/4" x 3 1/4"**

Description on page 8





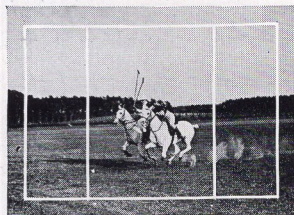
Super Ikonta C and Super Ikonta C Special take 8 pictures of this size; or (with mask) 16 pictures half this size. See lower left, page 2.



The Albada Direct View Optical Finder

lines. This is of especial value when photographing rapid motion, because the subject can be sighted and followed before it enters the picture, and the exposure made at just the proper instant. As the camera is held at eye-level for sighting, the picture is taken exactly as seen by the eye. The finder also shows the smaller field for use when the insert mask is used.

THE WHOLE: View as seen through an Albada Finder. OUTER RECTANGLE: The part that will be included in full size pictures. INNER RECTANGLE: The part that will be included when the half-size mask is in place.



The COMPUR Shutter

These cameras are equipped with the latest Compur Rapid Shutter — the shutter that has won world-wide recognition and widest use because of its accuracy, dependability and long life. Speeds range from 1 second to 1/500th second in different models, also time and bulb. The self-timing device* is useful in making slow automatic exposures, and, of course, for self-portraits.



* Not available on Super Ikonta A.

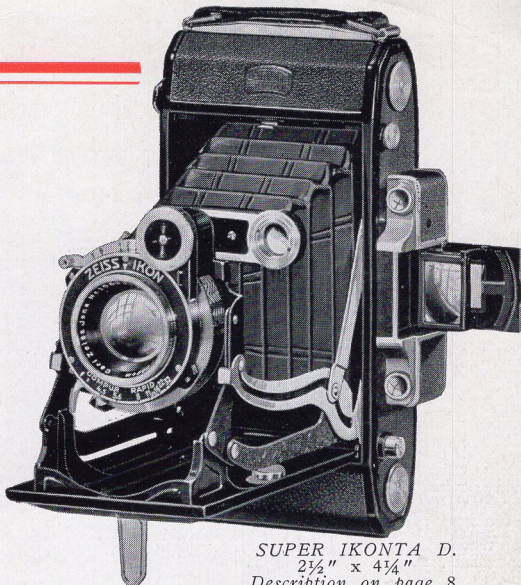
Showing construction of the famed ZEISS Tessar lens.

The ALBADA View-Finder

All Super Ikonta cameras are equipped with the Albada optical finder. This direct view-finder shows a large field of view, with the part that will be included in the picture neatly framed in white

The ZEISS Lens

Super Ikonta cameras are fitted with the Carl ZEISS Tessar lens. This lens, since its introduction 35 years ago, has become first choice for finest work among leading photographers everywhere — as shown by the lens data published in the world's photographic annuals. For simplicity of design, compactness, precision of manufacture, and the brilliant and clear definition of its negative, the ZEISS Tessar is unsurpassed.



*SUPER IKONTA D.
2½" x 4¼"
Description on page 8.*

Double Exposure Prevention

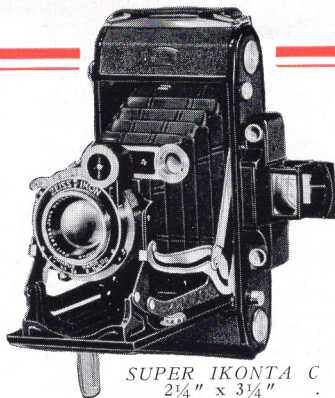
On Super Ikonta A and C Special, a new device locks the shutter release after each exposure, until the film has been wound, thus preventing the loss of *two* pictures through accidental double exposure. This is an exclusive feature, heretofore available only on the Contax and Super Ikonta B. A signal dot shows whether the camera is ready for the next exposure.

Full size picture taken by Super Ikonta D. Portion inside white lines shows half-size, 2" x 2¾" taken when insert mask is used.



Picture Sizes and Masking Device

Super Ikonta A takes 16 pictures $1\frac{5}{8} \times 2\frac{1}{4}$ " (lower left, page 2), on regular 8-exposure $2\frac{1}{4} \times 3\frac{1}{4}$ " rollfilm, thus cutting operating costs considerably. Both Super Ikonta Models C take 8 pictures $2\frac{1}{4} \times 3\frac{1}{4}$ " (upper left, page 4) on standard rollfilm. However, by slipping a light metal mask into place when loading, 16 half-size $1\frac{5}{8} \times 2\frac{1}{4}$ " (lower left, page 2) pictures may be made instead. Super Ikonta D takes 8 pictures $2\frac{1}{2} \times 4\frac{1}{4}$ " (lower right, page 5) or, with mask, 16 half-size $2 \times 2\frac{3}{8}$ ". The masking device effects a considerable economy, and is also useful when a limited field only is required.



SUPER IKONTA C
 $2\frac{1}{4} \times 3\frac{1}{4}$ "
Description on page 8

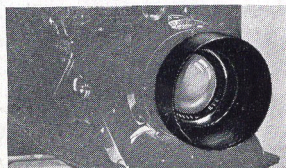
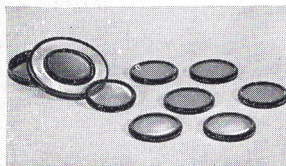
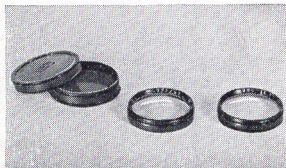
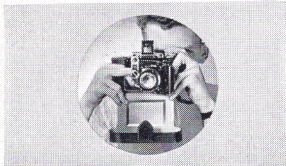
Accessories

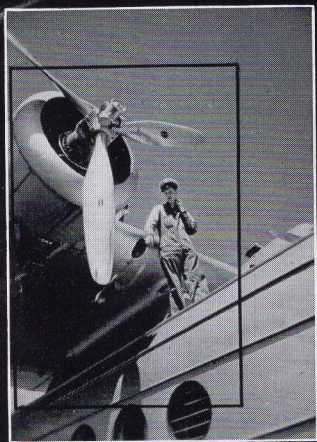
EVEREADY CARRYING CASE: This is so designed that the camera may be brought quickly into use while still securely fastened in its case. It need be removed only for loading and unloading. Thus speed and convenience are combined with constant protection for a finely built instrument.

SUPPLEMENTARY LENSES: Special supplementary lenses that shorten the focal length of the camera lens and permit taking pictures closer than the nearest distances provided by the range-finder, are available. Focusing is by measurement and use of a distance table given in the instruction book accompanying each camera.

FILTERS: A full assortment of light, medium and dark yellow, yellow-green, green, orange, ultra violet, blue and light red filters is available for all Super Ikonta cameras.

SUNSHADES: Sunshades often add surprisingly to the brilliance of the picture, and should be much more generally used. Zeiss sunshades may be used alone or with filters, on all Super Ikonta models.





*Illustrating Enlarging Qualities
of Super Ikonta Negatives*

Their substantial construction and ease of operation have won for ZEISS IKON the highest place among the World's fine cameras. They are manufactured by builders who, for 76 years, have specialized in producing precision photographic apparatus.



Description and Prices

SUPER IKONTA A:

Picture size: sixteen $1\frac{5}{8}'' \times 2\frac{1}{4}''$ pictures on standard $2\frac{1}{4}'' \times 3\frac{1}{4}''$ rollfilm. Lens: ZEISS Tessar, F/3.5, focal length, 3". Shutter: Compur Rapid, 1 to 1/500th sec., T & B, with lock to prevent double exposure. Weight: 19 oz. Dimensions: $4\frac{3}{4}'' \times 3\frac{3}{4}'' \times 1\frac{3}{4}''$. Price.....	\$110.00
Eveready Carrying Case.....	8.00
Leather Carrying Case.....	3.25
Filters, (see below)	
Supplementary close-focusing lens No. 995/17; 39" to 23", 32 mm.....	3.00

SUPER IKONTA C SPECIAL:

Picture size: eight $2\frac{1}{4}'' \times 3\frac{1}{4}''$, or (with mask) sixteen $1\frac{5}{8}'' \times 2\frac{1}{4}''$. Lens: ZEISS Tessar, F/3.5, focal length, $4\frac{1}{8}''$. Shutter: Compur Rapid, Self-Timing 1 to 1/400th sec., T & B; lock to prevent double exposure. Weight: 30 oz. Dimensions: $6\frac{1}{2}'' \times 3\frac{5}{8}'' \times 1\frac{5}{8}''$. Price.....	\$122.00
Eveready Carrying Case.....	9.00
Leather Carrying Case.....	3.75
Supplementary close-focusing lens No. 995/24; 59" to 30", 37 mm.....	4.00
Supplementary close-focusing lens No. 995/25; 30" to 20", 37 mm.....	4.00
Filters, 37 mm (see below)	

SUPER IKONTA C:

Picture size: eight $2\frac{1}{4}'' \times 3\frac{1}{4}''$, or (with mask) sixteen $1\frac{5}{8}'' \times 2\frac{1}{4}''$. Lens: ZEISS Tessar, F/4.5, focal length $4\frac{1}{8}''$. Shutter: Compur, Self-Timing, 1 to 1/250th sec., T & B. Weight: 28 oz. Dimensions: $6\frac{1}{2}'' \times 3\frac{5}{8}'' \times 1\frac{5}{8}''$. Price.....	\$ 86.00
Eveready Carrying Case.....	9.00
Leather Carrying Case.....	3.75
Filters, 37mm, (see below).	
Supplementary close-focusing lens No. 995/24; 59" to 30", 37 mm.....	4.00
Supplementary close-focusing lens No. 995/25; 30" to 20", 37 mm.....	4.00

SUPER IKONTA D:

Picture size: eight $2\frac{1}{2}'' \times 4\frac{1}{4}''$, or (with mask) sixteen $2'' \times 2\frac{3}{8}''$. Lens: ZEISS Tessar, /4.5, focal length, $4\frac{3}{4}''$. Shutter: Compur Rapid, Self-Timing, 1 to 1/400th sec., T & B. Weight, 33 oz. Dimensions: $7\frac{1}{8}'' \times 3\frac{7}{8}'' \times 1\frac{3}{4}''$. Price.....	\$ 94.00
Eveready Carrying Case.....	10.00
Leather Carrying Case.....	4.50
Filters, 37mm, (see below).	
Supplementary close-focusing lens No. 995/27; 79" to 38", 37 mm.....	4.00
Supplementary close-focusing lens No. 995/23; 38" to 26", 37 mm.....	4.00

FILTERS:

Zeiss Ikon slip-on, Ultra-Violet G0, Light Yellow G1, Medium Yellow G2, Dark Yellow G3. Price each, 32 mm or 37 mm.....	\$ 4.00
Zeiss Ikon slip-on, Blue B40, Yellow-Green GR55, Green GR50, Orange G4, Light Red R10. Price each, 32 mm or 37 mm.....	4.50
Carl Zeiss slip-on, Light Yellow L, Dark Yellow D, 32 mm or 37 mm, Price each.....	5.00
Bernotar (polarizing filter), 32 mm for Super Ikonta A.....	12.00
Bernotar, (polarizing filter), 37 mm for Super Ikonta C, C Special and D.....	13.00
(When ordering filters, specify 32mm diameter for Super Ikonta A; 37mm diameter for Super Ikonta C, C Special and D. Mention camera model).	

SUNSHADES:

32 mm slip-on for Super Ikonta A.....	\$ 2.00
37 mm slip-on for Super Ikonta C, C Special and D.....	2.25

C. R. SKINNER MFG. CO.



290 Turk St.

San Francisco

California

Phone ORdaway 6909

