



*Movies you
make yourself
with the new*

Ciné-Kodak

Model B

An Eastman-made motion picture camera in hand camera size and a motor driven projector—Kodascope, Model C.

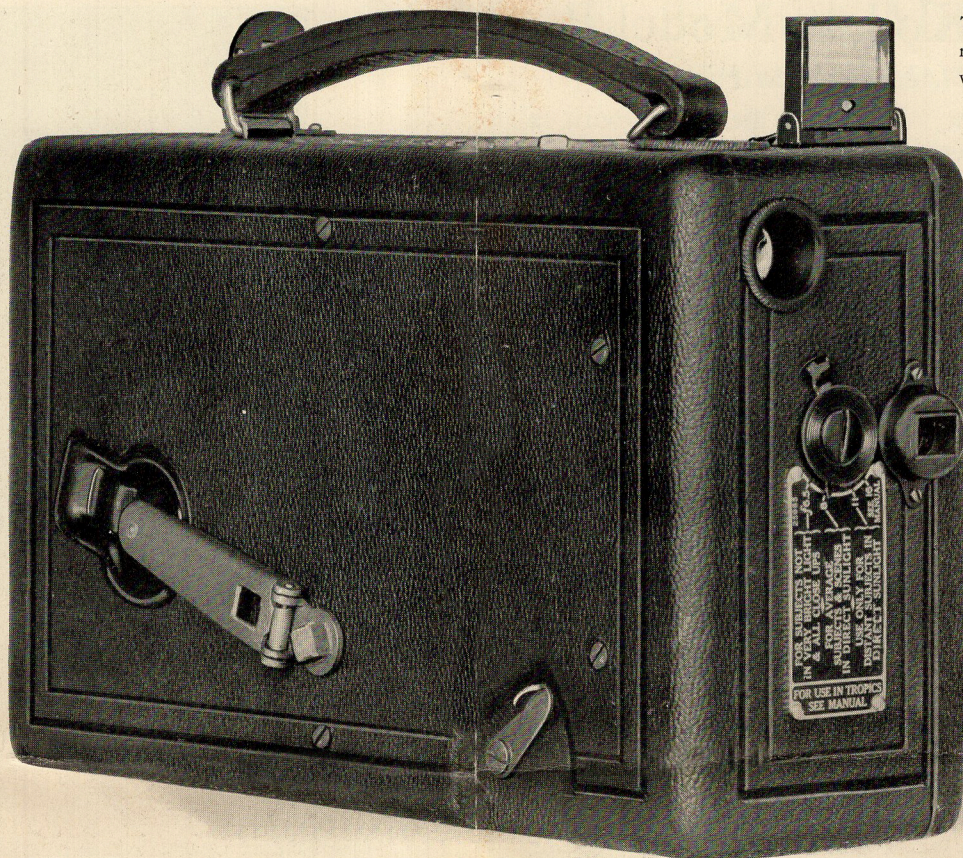
Complete equipment, including screen, \$140

EASTMAN KODAK COMPANY

ROCHESTER, N. Y.

The Kodak City

The crank which winds the spring-motor is hinged to the side of the camera and is folded flat when not in use.



The Sight Finder remains folded when not in use.

The New Ciné-Kodak, Model B

For Personal Motion Pictures

CINÉ-KODAK, Model B, gives you motion pictures just as easily as you now make snapshots.

It's a motion picture Kodak in size approximating the 3A Kodak closed. It weighs but five pounds loaded with 100 feet of Ciné-Kodak Film, and requires no tripod.

In simplicity of operation, Ciné-Kodak B rivals any "still" camera. It is automatically cranked by a spring-motor; the focus is fixed. When making the movie, the Ciné-Kodak is held either at waist height (the natural, steady position) or at eye level.

On the screen, the gratifying picture results which Ciné-Kodak produces are a marvel to the amateur and a delight to the expert.

Ciné-Kodak B is furnished with either of two lens equipments, $f.6.5$ or $f.3.5$. Both are specially made and carefully tested for motion picture work—the difference lies in the added speed of the Kodak Anastigmat $f.3.5$.

Prices

| | |
|--|----------|
| Ciné-Kodak, Model B, $f.6.5$ | \$ 70.00 |
| Ciné-Kodak, Model B, $f.3.5$ | 100.00 |
| Kodascope, Model C (motor driven)..... | 60.00 |
| Kodascope Screen No. 0 (22 x 30 inches).... | 10.00 |
| Kodascope Screen No. 1A (30 x 40 inches) .. | 15.00 |
| Ciné-Kodak Film, including processing, 100 ft. | 6.00 |
| Ciné-Kodak Film, including processing, 50 ft. | 4.00 |

Briefly told, that's the story, but more details are necessary to understand all that the Eastman Kodak Company has achieved.

Ciné-Kodak, Model B

For Making Motion Pictures

CINÉ-KODAK, *Model B*, performs with a smoothness and steadiness of action that assure the operator good pictures from the very start. Hand-cranking is dispensed with entirely; a spring-motor controls the cranking and timing as well.

Easy Operation. Loading the Ciné-Kodak with 16 mm. Ciné-Kodak Film is as easy as loading any Kodak. When the picture chance comes there is nothing to do but press the lever and the movie's in the making—instantly.

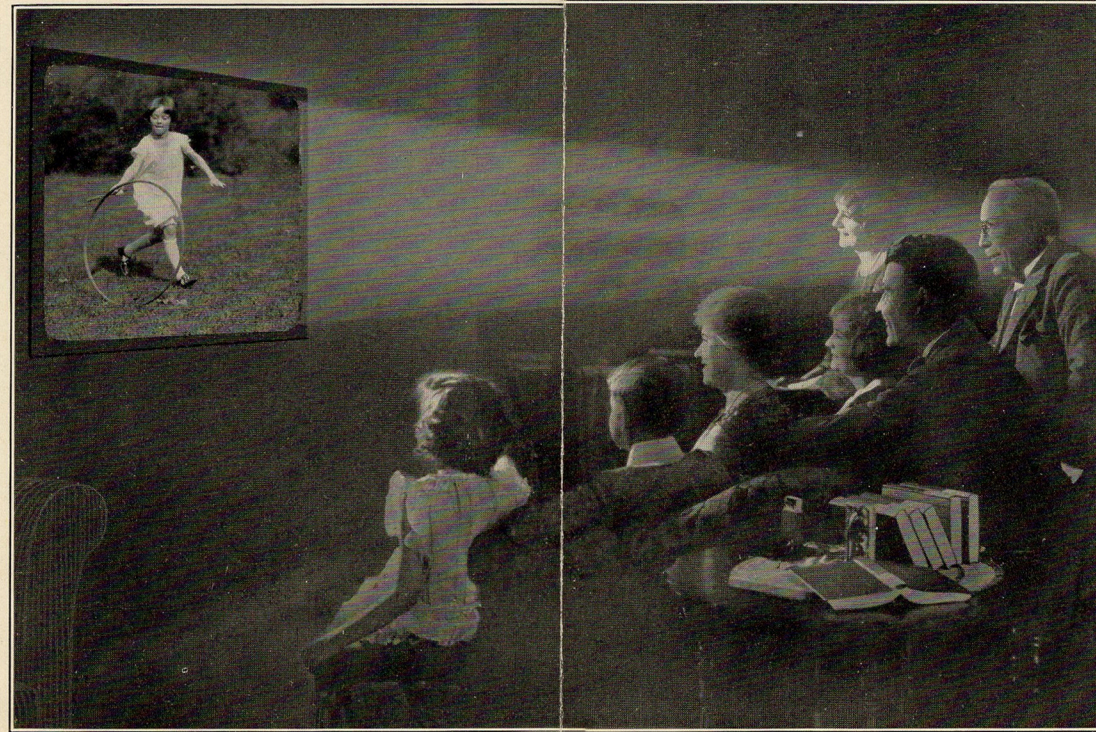
Proper exposure is easily arrived at. The diaphragm openings alone regulate this since shutter speed is a constant factor, nor is the selection of the correct diaphragm opening left to memory or guess work; a table attached to the front of the camera tells the opening to use for different light conditions, and a turn of a dial makes the adjustment.

Focusing requires no attention whatsoever, except that with the *f.3.5* equipment a mere turn of a disk brings a close-up attachment into position. Otherwise distant views follow close-ups, action follows action without thought for timing or focusing.

Ciné-Kodak, *Model B*, reduces cinematography to terms of surprising simplicity; complicated, bothering details are at once discarded; from beginning to end the operator feels himself a very part of the action, absorbed and fascinated by the thrill of making movies.



Two finders are provided so that the Ciné-Kodak can be held either at waist level or at eye level.



Economy of Operation

ECONOMY of operation is one of the outstanding features of motion pictures the Kodak way, and here Ciné-Kodak Film marks the key achievement. First, Ciné-Kodak Film is 16 millimeters wide (approximately $\frac{5}{8}$ of an inch) as against 35 millimeters ($1\frac{3}{8}$ inch) for professional film.

This, you see, makes a saving in *both* width and length. Not only is the film narrower than the standard but 400 feet of Ciné-Kodak Film has

the same number of pictures on it and gives the same time length of entertainment (16 minutes) as 1,000 feet of standard film.

Second, by a special processing method the film used for exposure is the identical film used for projection; and third, the initial film cost is the only cost. The laboratory finishing service entails no extra charge—all obvious savings that place amateur cinematography within everyone's reach.

Details of Ciné-Kodak, Model B

THE ILLUSTRATION below indicates the small size of the new Ciné-Kodak, *Model B*, as compared with the well-known 3A Kodak. *Actual dimensions:* 8 $\frac{13}{16}$ x 5 $\frac{9}{16}$ x 3 $\frac{1}{16}$ inches: distinctively a hand camera and weighing but 5 pounds, requiring no tripod. *Spring-motor driven:* One winding sufficient for exposing 20 feet of film. *Body:* Aluminum covered with



black genuine leather. *Daylight loading:* Length of film 50 or 100 feet. *Capacity* without reloading: Sufficient to photograph action for 4.2 minutes. *Lens:* Eastman-made, *f.3.5* or *f.6.5*. *Fixed focus.* *Two Finders:* mirror type for use at waist level and direct type for use at eye level. *Footage Indicator:* Automatically registers length of film unexposed. *Exposure Guide:* On the camera for ready reference.

Kodascope, Model C

For Projecting Motion Pictures

KODASCOPE, *Model C*, for showing your movies on the screen, is compactly constructed and light in weight. For ease of operation, it is a rival for the Ciné-Kodak, *Model B*.

Compactness. The reel arms fold and the removable lens barrel is fastened with a clip to the base of the projector when the outfit is not in use. By this means, the dimensions of the Kodascope, *Model C*, are reduced to 8 x 5 $\frac{1}{2}$ x 7 inches (the weight is slightly over 9 pounds), a convenient size for carrying when you want to show your pictures away from home.

Easy Operation. Threading is easily and quickly done and pictures are brought in focus by a turn of the lens barrel. "Framing" (lowering or raising the picture area to fit the gate aperture) is controlled by a lever.

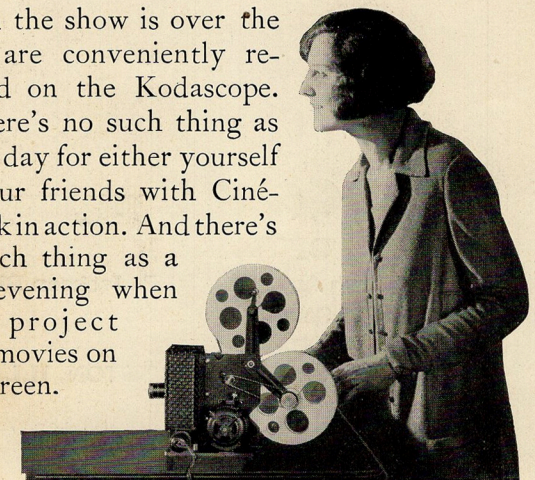
Kodascope, *Model C*, is operated by a small electric motor—just turn on the switch and the picture starts. During projection, the mechanism can be stopped at will and a single section of the film shown without motion.

It can be plugged in anywhere on any ordinary house circuit, 105 to 125 volts, alternating or direct current, and the operating cost will not exceed three cents per hour.

When ready for the entertainment just plug in, set the focus, then sit down to enjoy the picture. There is nothing further needed at the machine until the movie comes to an end.

When the show is over the reels are conveniently re-wound on the Kodascope.

There's no such thing as a dull day for either yourself or your friends with Ciné-Kodak in action. And there's no such thing as a dull evening when you project your movies on the screen.



*A Circulating Film Library
at your command*

IN USING the Kodascope equipment you are not limited to showing pictures made by yourself. Supplementing your own movie there are hundreds of well-known photoplays: comedies, dramas, travelogues, comic cartoons and educational films obtainable at small rentals from the Kodascope Libraries, Inc., represented in New York, Boston, Pittsburgh, Philadelphia, Chicago, San Francisco, and Los Angeles.

At your volition the Talmadge sisters, Jackie Coogan, Irene Rich, Douglas Fairbanks, Pola Negri, Charlie Chaplin, Norma Shearer and dozens of other well-known stars will entertain you and your guests at home on the screen.

*Let us show
you the CINÉ-KODAK
and
KODASCOPE*

*A demonstration at your
convenience*

Almer Coe & Company
OPTICIANS

105 N. Wabash Ave. 78 E. Jackson Blvd.
18 South La Salle St.
CHICAGO, ILL.
1645 Orrington Ave., EVANSTON, ILL.
