

**Century
Cameras**

Century Cameras

1905



CENTURY CAMERA COMPANY
ROCHESTER, N.Y., U. S. A.

J. M. WALMSLEY, *Pres.*

GILBERT E. MOSHER, *Secy.*

GEO. J. MACLAUGHLIN, *Treas.*



NEGATIVE BY W. S. K. BROWN, SAN FRANCISCO.

B. & L. PLASTIGMAT LENS, AS FITTED TO CENTURY GRAND SPECIAL.

EL CAPITAN YOSEMITE VALLEY, CALIFORNIA.

It's the Charm of Photography

and the fascination it possesses that holds the interest and attention of many thousand enthusiastic devotees. Nothing tells a story like a picture.

Who does not keep souvenirs to prize as the only visible recollections of memorable occasions? We cling to them as if they were the only connection between then and now; the link which, if lost, would let the occasion slip from our memory forever. Yet how much more would we treasure, not the objects which merely suggest, but photographs—actual scenes—of events that

have given more than usual color to our life; of friends who were once our daily companions;—of strange happenings or accidents of which we were the startled and awed spectators. With photographs the past is always with us.

We can barely recall in our mind's eye little more than the dim outlines of journeys and vacations taken in the past, all of which have been brimful of pleasant memories and incidents, but, when we take down the old scrapbooks begun years ago, and look at photograph after photograph, we live over again, not only vague recollections, but almost every detail or happening comes back as vivid and as fresh as if it took place yesterday.



A little book of my own making—that money could not replace, much less buy,—contains photographs of a laughing, sunny-haired, three-year-old miss, from the time she was five days old. I tried to photograph her the afternoon of the very day she came to board with us, and had my camera nicely arranged in front of a window, only to meet with a sweet nurse's very decided no.

But on the fifth day I won out, then again at twelve days, and so the photographs go—all the way through the long-clothes age; from the creeping stage through the scampering one; sitting beneath her Christmas trees with her dolls, and again beside her birthday cakes,—all she's ever had. All these are pictured there, and hardly a parent ever looks at my pictures but decides to begin at once a pictorial biography of their young hopefuls, and express regret for lost opportunities which they cannot now make up.

Therefore, if you would know what real, lasting enjoyment is—enjoyment that begins with the taking of a picture, and increases through the developing of the plates to the making of the prints or lantern slides, and still further increases through the delight your pictures are to others for years afterward, as well as a biographic history of your own good times, get a camera—don't wait—get one to-day. But be sure you get a "Century." I have several, so speak from experience.

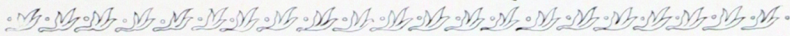
One Who Appreciates the
"Charm of Photography."

*"All passes. Pictures alone
Enduring, remain with us."*





The Title To Supremacy



secured by Century Cameras, immediately upon their introduction, is stronger to-day than ever before. It is a freely conceded fact that "Centurys" embody more improvements and meritorious features in general design and construction than any other plate Cameras of either domestic or foreign manufacture, without a single exception. They possess that exclusiveness and individuality which go to make the difference between Century Cameras and others—for when you see a Camera with the name plate "Century" on the front, you are looking at an instrument that has conscience in it—made on honor.

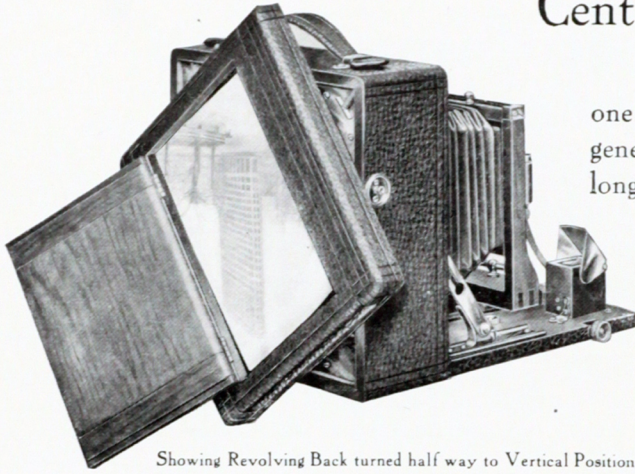
Centurys are constructed throughout of the best mahogany, kiln dried, and prepared long before it is actually required for use, to guard against any possibility of warping. In selecting the stock, we secure that which has the richest grain effect, and finish it so as to preserve both the beautiful grain and also the natural color of the wood. All corners are gracefully rounded, and every Century Camera, from the low priced to the most expensive, is not merely nailed together and then covered with leather—it is dovetailed. To dovetail is a more expensive way to manufacture,—but to maintain Century Quality nothing is unimportant.

Century Quality Results from 21 Years Experience.

Century Cameras contain the good points which twenty-one years of experience have developed and suggested, together with new features and exclusive ideas covered by letters patent, all of which make our entire line of cameras thoroughly distinctive.

Our new factory is equipped with brass and wood-working machinery of the latest type. The employment of skilled mechanics in every department—men trained by years of experience in camera making—the use of only such raw materials as are first-class in every respect—with facilities so superior, and the system of manufacture so thorough, we are enabled to attain in our finished product the nearest possible approach to absolute perfection.

Century Revolving Back.

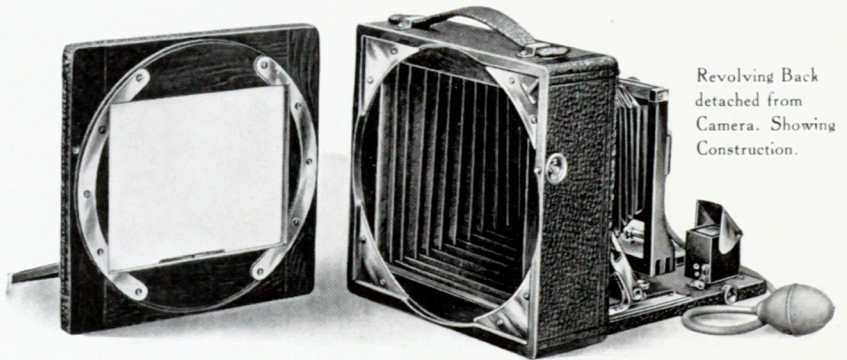


Showing Revolving Back turned half way to Vertical Position.

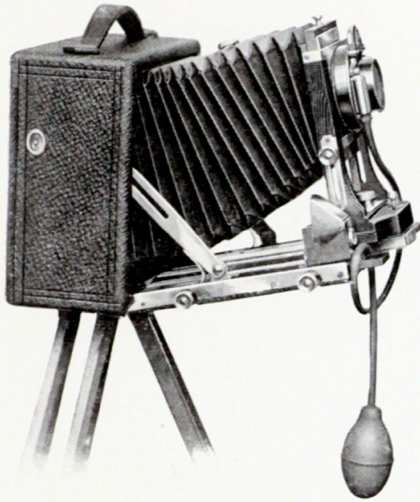
Photographic plates are usually longer one way than the other, and it has been the general custom to build cameras so that the long side of the plate will be horizontal with the view. When photographing high buildings, or when making portraits or, in fact, any perpendicular subject, the length of the picture should be up and down,—the short side acting as the base.

To make an upright picture with an ordinary camera, by which we mean one without reversible back, the entire instrument must be turned over on its side, and it is obvious that in such a position the various adjustments are not as readily manipulated. Even with the improved form of hand camera, made with a reversing back, it is necessary, in order to change the plate from a horizontal to a vertical position, to detach the entire back either by releasing springs or pressing buttons, then turn the back over and again adjust it to the camera in the reverse position.

The new Revolving Back enables the photographer to decide instantly, just how he wishes to make the picture, as the reflected image can be viewed with the ground glass focusing screen in either a vertical or horizontal position, without detaching the back. This is the most important and useful adjustment applied to hand cameras in recent years. The plate is changed from a horizontal to a vertical position by simply pressing a spring catch at the side and revolving the back; you do not disturb the position of the camera or any part of it.



Revolving Back detached from Camera. Showing Construction.



Century Grand, Showing Swing-Bed.

The Swing-Back—Its Use.

The purpose of a swing-back or swing bed is to keep the plate always perpendicular, or parallel with the object photographed. To include the top of a tall building or church spire, or to secure more of a subject than can be obtained with the camera level, it is often necessary to tilt it. Under such conditions, with a camera not having a swing-back, the lines in the photograph will converge at the top, because of the plate being at an angle with the subject instead of parallel to it. If the back of the Camera is made to "swing" independently, then, even though the Camera

is not level, the plate can be placed parallel with the subject, and straight lines secured.

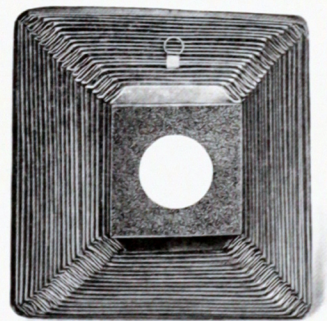
Advantages of the Century Swing-Bed.

To manipulate an ordinary Swing-Back, it is necessary, in order to keep the plate perpendicular, to adjust the tripod legs. But this is not always convenient,—in fact, impossible under certain conditions. We have perfected an adjustment which avoids the necessity of any change in the position of the tripod, and this feature is—the Century Swing-Bed.

It is easier than the old style swing-back to manipulate, and when you level the tripod top and attach the camera, the plate always remains perpendicular, whether the swing-bed is used or not.

All Century swings having rack and pinion movement are fitted with our new patent swing back attachment, which holds the back absolutely rigid in any desired position by simply pushing the milled head in flush with the bed—another exclusive Century idea.

As a rule, landscape pictures are made with a small diaphragm, or stop in the lens for the purpose of bringing into sharp focus both objects in the fore-



So perfect is every fold, that a 20 inch Bellows, when closed, measures only one inch in thickness.

ground as well as distant points. Under certain conditions, however, the use of a small diaphragm would require an exposure too long to prevent movement of the objects—swaying trees, etc. As there are usually no straight lines in a landscape, by tilting the swing-back you can bring both near and distant objects into focus while using a large stop.

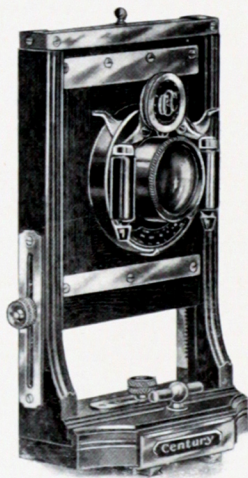
A swing is not absolutely necessary for hand work pure and simple, but this feature as applied to Century Cameras does not increase either the weight or bulk. It is an adjustment that will be found very convenient when making tripod exposures, and under certain conditions it is practically indispensable.

Value of a Rising and Sliding Front.

The lens when occupying its normal position on a Camera is exactly in the centre of the plate. The purpose of a Rising and Falling Front is to shift the lens above or below the centre, and thus vary the relative amount of sky and foreground, on which depends very largely the artistic effect of the picture. Moving the lens upward will give more sky, and when dropped below the centre the amount of foreground is increased.

All Century Cameras have Rising and Falling Front, and the maximum amount of movement is given. In Models 40 to 46 the adjustment is controlled by a milled head, while all the Century Grand Cameras have a fine rack and pinion movement with patent automatic lock, which holds the lens in any desired position without the usual binding screw—another original Century feature.

All Century Grand Cameras, also Model 46, and Petite No. 3, have the front arranged to move horizontally as well as vertically. This is called a Double Sliding Front. The horizontal movement permits adjusting the lens from side to side, thus changing the angle of view, or, if the camera is not made with a reversing back, this movement takes the place of regular rising and falling front when the instrument is reversed for vertical pictures.



Double Sliding Front,
with Rack and Pinion adjustment.



No danger of the front slipping, with a Century Automatic Clamp.

A Front Clamp that Never Slips.

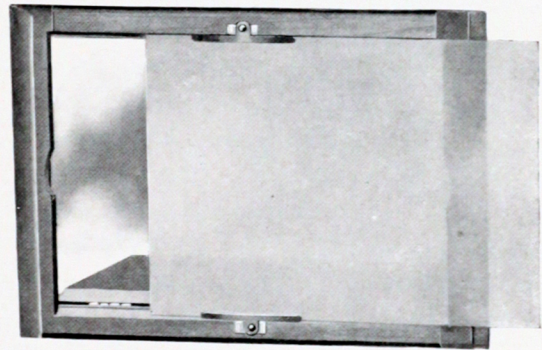
In place of the old style clamp hook for holding the front in position, after focusing, all Century Cameras are fitted with our new patent Automatic Clamp,—a novel device, which automatically clamps and securely holds at any desired point on the bed, the front with lens and shutter. There

is absolutely no chance of the front slipping after once adjusting the focus, as the "shoe" grips the brass bed plate its entire length.

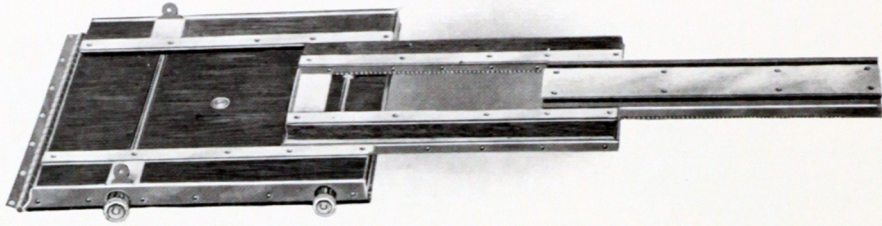
When the T shaped bar at the base of front is straight across the bed, or parallel with the name plate, the clamp is set, and the lens cannot possibly move. To release the clamp it is only necessary to turn the bar a trifle either to the right or left, when the front with lens can readily be moved forward or back. The instant you release the bar it clamps the front automatically, and clamps it securely,—no slipping or sliding to throw the picture all out of focus. This clamp is the most effective device ever invented for the purpose, but being an expensive part to manufacture, and an original idea, it is found only on Century Cameras. It is another of our exclusive and very practical features—another evidence of Century Quality.

A Focusing Screen that is Always in Register.

The method of fitting the ground glass focusing screen in Century Cameras is entirely new, as it provides for a variation in the thickness of the ground glass. If the original screen is ever broken, it can be replaced without a single tool in ten seconds, actual time, and no matter how thin or thick the glass, it will automatically register, and occupy the same plane as the sensitive plate. No other plate or film Camera has this feature. It is exclusive with the Century, and helps to make up Century Quality.



Method of removing and replacing Ground Glass.
Not a tool necessary.



Century Patent Triple Section Bed.

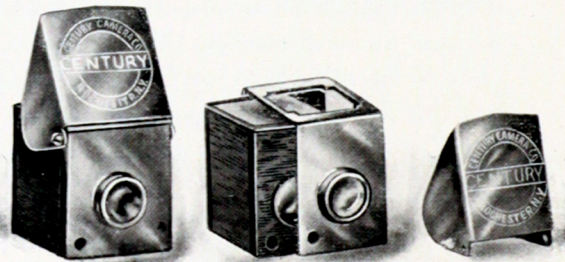
Extended by a Single Pinion.

Rigidity!—that's but one of the important points we have accomplished in the construction of our extension beds.

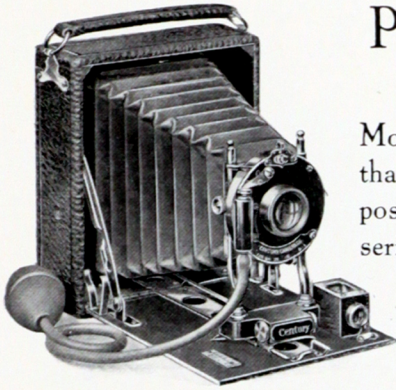
The Century double and triple Extension Beds are marvels of mechanical ingenuity. A single pinion at the side moves each section of the bed forward or back, and when pushed in acts as a lock, holding the bed absolutely firm and rigid whether it is fully or only partly racked out. By turning the milled head the section carrying lens and shutter moves first, and when this section is fully extended it locks automatically into the second section, and at the same time begins to carry it forward by means of a continuous rack. Our method of fitting the front section of the bed is entirely new, and an original Century idea. It gives an exceptionally easy and smooth movement, as the same amount of friction exists whether the front section is fully or only partly extended. Special construction of the wood and metal parts, makes the bed capable of resisting atmospheric changes to a remarkable degree. Each section is bound with metal to prevent any possibility of lost motion, and brass guides on the top of the bed insure strength and perfect rigidity.

Century Three Lens Brilliant Finders.

Century Finders are of a special design, far superior to the ordinary type, as three lenses are employed. In place of simply one lens at the top we use two, and by this combination secure an image which is most brilliant and perfect. For the purpose of cleaning the lenses and mirror, the Century Finder can readily be removed from the brass binding, and as easily put back into place,—a feature not possible with any other finder in the market. Century Quality again.



A "Century" finder can easily be taken apart for cleaning—others cannot.



Petite Century No. 1.

The original Petite Century—now known as Model No. 2—has met with such an extensive sale that we have designed several new styles, all of which possess features and adjustments that place the entire series of Petites in a class by themselves.

Those who prefer the non-reversible back type of camera will find the Petite Centurys wonderful little instruments in every respect—perfect in all adjustments and so easy to operate that even a novice can readily make good pictures.

The No. 1 Petite,—the “Baby” of the “Centurys,” is an exceedingly compact camera, the $3\frac{1}{4} \times 4\frac{1}{4}$ measuring $5\frac{1}{4} \times 4\frac{1}{4} \times 1\frac{1}{2}$ inches, and its weight is only 16 ounces, owing to the fact that the entire bed is made of aluminum. This in connection with the red bellows, black leather covering, dark shutter and nickel trimmings, gives the camera a most attractive appearance, to say nothing of its value as a picture taker.

The front adjusts for regulating sky and foreground, and a brilliant finder is attached to the bed. An automatic clamp holds the front in any position—no set screws necessary.

The Lens is a Century Rapid Rectilinear, of just the right focus to give the most pleasing perspective. It has a flat field, fine depth of focus and good covering power, and is fitted with the No. 3 Automatic shutter. A new feature this season is a separate lever for throwing back the shutter leaves when focusing. The shutter is described on page 42. A ground glass screen at the back allows the full size image to be seen for focusing when desired. The plate holder is a new model with spring bar, and holds two plates. The No. 1 Petite Century will also carry the film pack adapter.

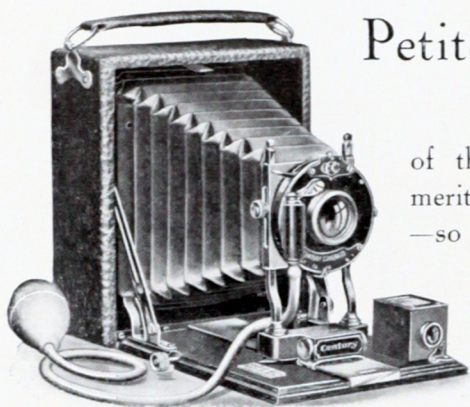
PRICE:

	$3\frac{1}{4} \times 4\frac{1}{4}$	4×5
Petite Century No. 1, with one Double Plate Holder,	\$10.50	\$13.00
Extra Double Plate Holders, each,	1.00	1.00



NEGATIVE BY R. T. JEFFCOTT, PHILADELPHIA.

“DOLLY VARDEN.”



Petite Century No. 2.

The Petite Century No. 2 is the original model of the Petite series, and its popularity attests its merits. It is a compact camera of standard quality—so dainty in design and so perfect in construction that it may readily be carried in the pocket.

The Petite Century No. 2 has all the good points found in Model 1, and in addition a rack and pinion for focusing. Cartridge roll film as well as the film pack and glass plates may be used with Model 2—a feature not possessed by any other camera of a similar type on the market, excepting our No. 3 Petite and Petite Grand. The film holder fits so neatly that it is practically a part of the camera, and perfectly interchangeable with the plate holder.

The front with automatic clamp is adjustable for sky and foreground. A brilliant finder for locating the image is attached to the bed. The Lens is a Century Rapid Rectilinear, having fine depth of focus, good definition, a flat field and possesses ample speed for rapid instantaneous exposures. The No. 3 Automatic shutter operates for time, instantaneous and bulb exposures. It also has a lever for throwing back the shutter leaves when focusing. Described in detail on page 42. A ground glass screen at the back permits the full sized image to be seen when focusing.

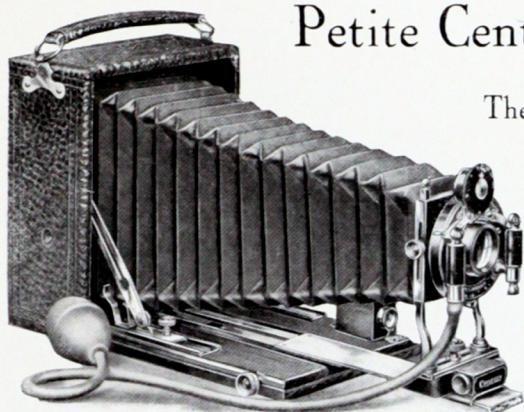
The Petite Century No. 2 is made throughout of fine mahogany, handsomely polished, the body being covered with genuine cowhide leather. The $3\frac{1}{4} \times 4\frac{1}{4}$ measures $4\frac{3}{8} \times 5\frac{1}{4} \times 1\frac{7}{8}$ inches. Weight, 17 ounces. The 4×5 measures $5\frac{1}{8} \times 6 \times 2\frac{1}{8}$ inches and weighs 24 ounces.

PRICE:

Petite Century No. 2, with one Double	$3\frac{1}{4} \times 4\frac{1}{4}$	4×5
Plate Holder,	\$12.50	\$15.00
Extra Double Plate Holders, each,	1.00	1.00



Petite Century No. 3.



The Petite Century No. 3 is not simply a "snap shot" camera limited in its field of work, but the scope it covers is a wide one. For instantaneous and time exposures, for landscape and interiors, for portraits and groups, for flashlight pictures,—for all these and more too, it is admirably adapted.

Real pictures do not result from simply making snap shots at random.

Many times you desire to see the full size image reflected on the ground glass for the purpose of composing and arranging the picture. This is possible with the Petite Century No. 3 whether using plates or film, and is a great advantage.

The No. 3 Petite has our automatic front clamp, rack and pinion for delicate focusing, brilliant finder—in fact every adjustment and advantage possessed by the preceding models, and in addition

- A Rapid Symmetrical Lens.
- A No. 1 Automatic Shutter (for description see page 42).
- A Double Sliding Front.
- A Swing Bed and Swing Back.
- A Bellows of sufficient length to use the back combination of Symmetrical Lens alone.
- A Self-Locking Pinion.

Never before has so compact a camera been made, containing the features enumerated above, at the same time being perfectly adapted for glass plates, the film pack and cartridge roll film.

The Petite No. 3 is covered with handsome seal grain leather. The bed is hand polished with lacquered metal trimmings.

It speaks for itself and will at once appeal to all desiring a camera for general work in the most compact form possible.

PRICE:

Petite Century No. 3, with one Double Plate Holder,	3¼ x 4¼ \$20.00	4 x 5 \$23.00
Extra Double Plate Holders, each,	1.00	1.00

Petite Century Grand.

No camera of the Long Focus type ever met with a more cordial reception than the regular Century Grand, and its remarkable sale among both amateur and professional photographers fully attests its merits. In the construction of the Petite Grand we embody those features which have made the Grand cameras so popular—the triple section telescopic bed operated by a single pinion, the double sliding front, both swing bed and swing back, pinion lock, automatic clamp, etc.

To apply all these adjustments, in a practical way, to so compact an instrument as the Petite Century has required the exercise of mechanical skill and ingenuity of the highest order. The result is a camera that will fully meet the existing demand for a long focus, yet very portable outfit—and an instrument which will add to our reputation for quality—"Century Quality." Just think of a $3\frac{1}{4} \times 4\frac{1}{4}$ folding camera with a focal capacity of 12 inches, measuring only $4\frac{1}{4} \times 2\frac{1}{8} \times 5\frac{1}{4}$ when closed, and made so that glass plates, the film pack and cartridge rolls of film may be used. Weight, 24 ounces. The 4 x 5 has a focal capacity of 14 inches, and measures $5 \times 2\frac{3}{8} \times 6$. Weight, 32 ounces.

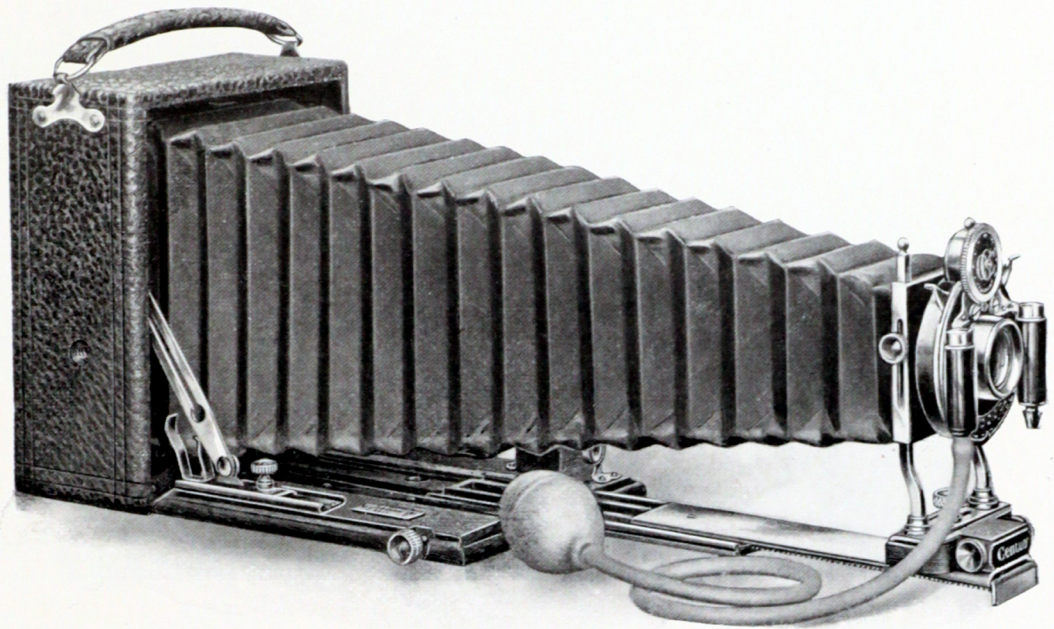
The telescopic bed is a very ingenious device, the two front sections being entirely of metal. The sections are extended by one pinion, which also serves as a lock, holding the bed in any position desired.

The front has both vertical and horizontal movements, and is held at any desired point on the bed by our new automatic clamp. Ample swing is given to both the back and bed.

All Petite Grands are fitted with the new Centar Lens Series II and No. 1 Automatic shutter. Lens and shutter described on pages 40 to 43.

A focusing screen is fitted to the back, protected by a wooden panel. Many times you will desire to see the full size image reflected on the ground glass, for the purpose of composing and arranging the picture. This is possible with a Petite Century Grand, whether using plates or film, and is a decided advantage, for the Petite Grand is not simply a snap shot camera, but owing to its perfect optical and mechanical qualities, it covers a wide field of work.

The Petite Grand is noticeably free from complicated parts, and its manipulation can readily be acquired by the amateur.



Petite Century Grand.

A brilliant finder, for locating the image, is attached to the bed. Three tripod sockets are fitted to properly balance the camera, when short or long focus lenses are employed.

We furnish handsome sole leather, velvet lined cases for Petite Grand Cameras. Prices are given on page 48.

Taken in its entirety, the Petite Grand is a wonderful little camera, and a winner for 1905.

PRICE:

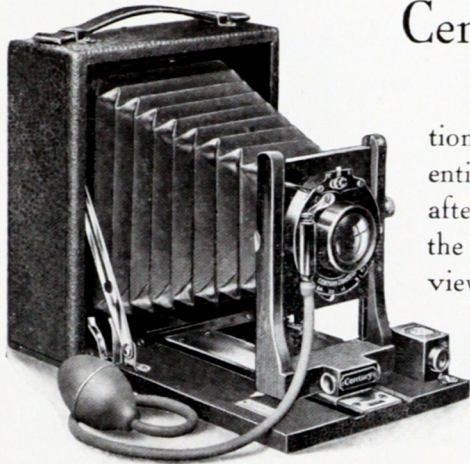
	3¼ x 4¼	4 x 5
Petite Century Grand, Centar Lens, Series II.,	\$28.00	\$33.00
Extra Double Plate Holders, each	1.00	1.00

Size of
Picture
made
with
 $3\frac{1}{4} \times 4\frac{1}{4}$
Century
Camera



Size of
Picture
made
with
 4×5
Century
Camera





Century Camera, Model 39.

Simplicity in design and ease of manipulation have always been noticeable features in the entire Century line. The less there is to look after when making a picture the more attention the amateur can give to selecting his point of view, and the possibility of error in manipulation is reduced to a minimum.

Century Model 39 is a thoroughly practical Camera in every respect,—and must not be classed as a toy. It is equipped with Rapid Rectilinear Lens, composed of two single achromatic combinations, possessing ample speed and definition,—consequently it is well adapted for general amateur work—indoors or outside.

The Shutter is our new No. 3 Automatic, adjustable for time, instantaneous and bulb exposures. It is fitted with separate lever at the side for instantly throwing back the leaves when focusing,—a new idea. Both lens and shutter are described on pages 40 to 43.

Century Model 39 has adjustable front for regulating amount of sky and foreground with automatic bed clamp. The bed is supported by two automatic side arms, making it perfectly rigid. Two tripod sockets are attached for time exposures. The finder is our three-lens Brilliant.

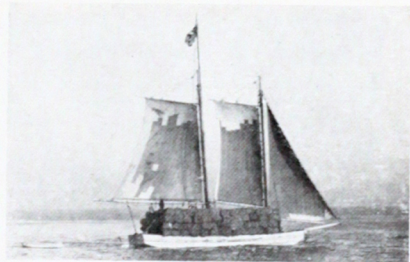
The box is mahogany, handsomely finished, with metal work of polished and lacquered brass. It is a beautiful little outfit in every way, to say nothing of its value and capabilities as a picture taker. Glass plates and film pack can both be used. Made only in 4 x 5 size.

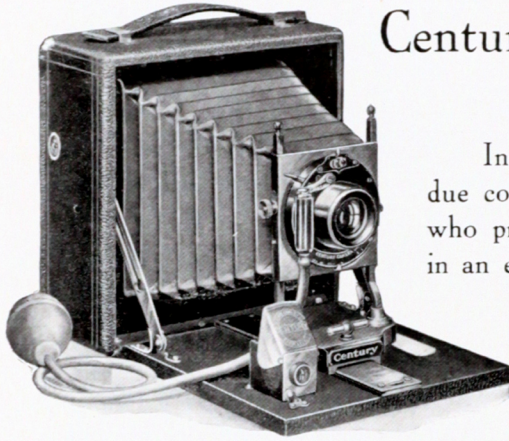
PRICE:

	4 x 5
Century Camera, Model 39,	\$12.00
Extra Double Plate Holders, each,	1.00

"My Century Camera arrived safely, and I find it a beautiful instrument—far superior to anything in this line I have ever seen before."

GEO. E. CRAGIN.





Century Camera, Model 40.

WITH REVOLVING BACK.

In designing Century Cameras for 1905 due consideration has been given the Amateur who prefers to invest only a moderate amount in an equipment, but nevertheless is anxious to possess a camera that can be depended on for the production of good pictures. Such a camera is Century Model 40.

Like the more expensive models, it is made throughout of mahogany, with

every corner dovetailed, and possesses adjustments which render it available for both hand and tripod work.

The Lens is our Century Rapid Rectilinear, a most excellent type, possessing plenty of speed, good covering power, and well adapted for general amateur work. It is fitted with our new No. 3 Automatic Shutter, operating for instantaneous, time and bulb exposures. A lever at the side when adjusted throws back the leaves for focusing,—a new and exclusive Century feature.

The Lens and Shutter are fully described on pages 40 to 43.

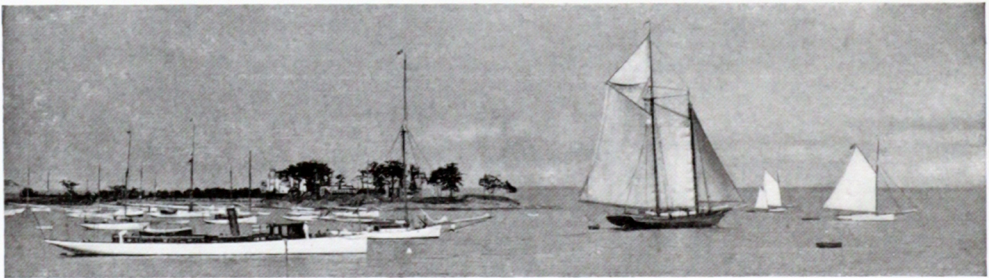
For the amateur who is just starting his photographic career, we can heartily recommend Model 40 as a camera that will fulfill every requirement.

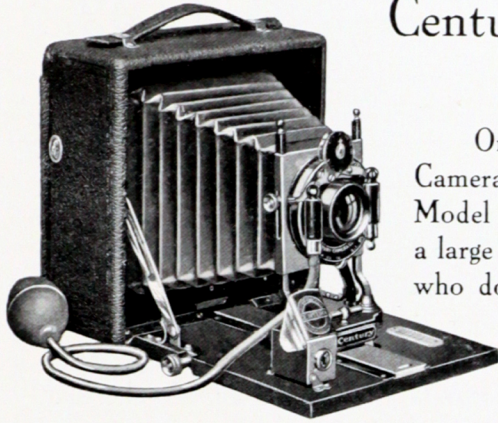
PRICE :

Including one Double Plate Holder and Carrying Case with handle.

	3¼ x 4¼	4 x 5	5 x 7
Century Camera, Model 40,	\$13.00*	\$15.00	\$20.00
Extra Double Plate Holders, each,	1.00	1.00	1.25

*Not furnished with Revolving Back, but has Reversible Back.





Century Camera, Model 41.

WITH REVOLVING BACK.

One of the most popular of moderate priced Cameras, and deservedly so, is the Century Model 41. It is a style that strongly appeals to a large number of Amateur Photographers—those who do not care for the more elaborate cameras, yet desire an outfit possessing such adjustments as will permit the varied field of work usually attempted by ambitious amateurs.

The general design of Century Model 41 is similar to Model 40, but it has in addition a fine rack and pinion, for accurate focusing, and a more expensive type of shutter—the No. 4 Double Valve being substituted for the No. 3. The shutter has triplicate movement, and in addition is fitted with a lever for throwing back the leaves, when focusing,—a new and exclusive Century feature. The Lens is our Century Rapid Rectilinear. Both lens and shutter are described on pages 40 to 43.

The back revolves for upright pictures (see page 6), the front adjusts for regulating sky and foreground and a brilliant finder with hood is attached to the bed. An Automatic clamp holds the front with lens at any desired point on the bed, an easier and more satisfactory method of adjustment than the old style clamp hook. The 5 x 7 is made with mahogany front in place of brass.

Century Camera, Model 41 A.

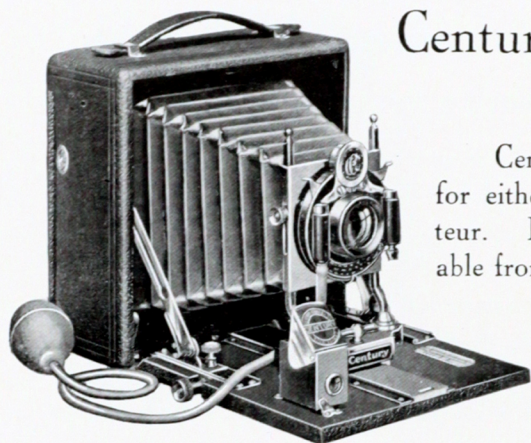
Model 41 A is the same in all respects as Model 41, excepting it has the No. 1 Automatic Shutter in place of No. 4 Regular Double Valve.

PRICE:

Including one Double Plate Holder and Sole Leather Carrying Case.

	3¼ x 4¼	4 x 5	5 x 7
Century Camera, Model 41,	\$17.00*	\$19.00	\$25.00
Century Camera, Model 41 A,	19.00	21.00	27.00
Extra Double Plate Holders, each,	1.00	1.00	1.25

*Not furnished with Revolving Back, but has Reversible Back.



Century Camera, Model 42.

WITH REVOLVING BACK.

Century Camera Model 42 is an ideal outfit for either the beginner or more advanced amateur. In addition to the rack and pinion, adjustable front, automatic clamp, revolving back (see pages 6 to 9), and other features possessed by Models 40 and 41, it has our new Swing Bed and Swing Back. This is a very useful adjustment, and a decided advantage when photograph-

ing tall buildings, church spires, and similar subjects which could not otherwise be included in the picture without distortion.

Model 42 is fitted with our Rapid Rectilinear Lens and No. 1 Automatic Shutter, operating for instantaneous, time and bulb exposures, with finger or pneumatic release. Though complete in every detail this camera is free from complicated parts, every adjustment being easily made. We recommend the Century Model 42 as a particularly desirable Camera at a moderate price—an instrument capable of producing the very best results. The 5 x 7 size has mahogany front in place of brass.

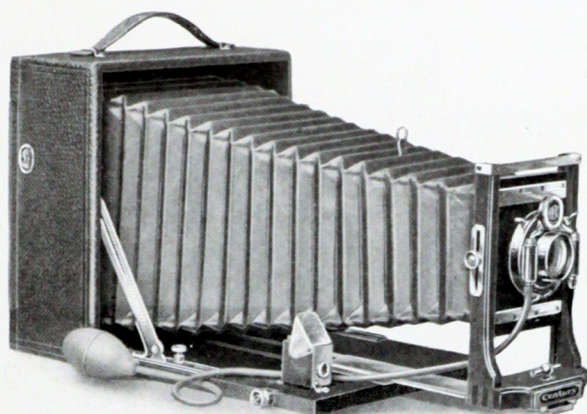
PRICE:

Including one Double Plate Holder and Sole Leather Carrying Case, with handle.

	3¼ x 4¼	4 x 5	5 x 7
Century Camera, Model 42,	\$22.00*	\$24.00	\$32.00
Extra Double Plate Holders, each,	1.00	1.00	1.25

*Not furnished with Revolving Back, but has Reversible Back.





Century Camera, Model 44.

WITH REVOLVING BACK.

We take pleasure in calling especial attention to Model 44 as being the most popular camera in the entire line of medium priced outfits. The wide field of work which can be accomplished with this instrument makes it a particularly attractive style for advanced amateur and professional photographers.

Model 44 contains every adjustment and all the meritorious features possessed by the less expensive types, including Revolving Back (see pages 6 to 9), swing back and swing bed, rising and falling front, automatic bed clamp, rack and pinion, etc. In addition, the camera is fitted with a Century Rapid Symmetrical Lens, and an extra long bellows of sufficient length so the rear combination of the lens can be used alone, for the purpose of making distant objects appear larger in the picture—a feature every experienced amateur will appreciate.

The Shutter is our highest type,—the No. 1 Century Automatic, operating for instantaneous, time and bulb exposures, with either finger or pneumatic release. By adjusting a lever at the side, the shutter leaves can be thrown aside for focusing. Both lens and shutter are fully described on pages 40 to 43.

PRICE:

Including one Double Plate Holder and Sole Leather Carrying Case, with handle.

	3½ x 4¼	4 x 5	5 x 7	6½ x 8½	8 x 10
Century Camera, Model 44,	\$25.00*	\$28.00	\$36.00	\$50.00	\$62.00*
Extra Double Plate Holders, each,	1.00	1.00	1.25	1.75	2.00

*Not furnished with Revolving Back, but has regular Reversible Back.

Century Camera, Model 46.

WITH REVOLVING BACK.

In originality of design, perfection of detail, mechanical construction, complete adjustments, and ease of manipulation, Century Model 46 stands pre-eminent.

It is the first camera of the series in which we introduce our:

- (a) Double section brass bound telescopic bed.
- (b) Patent Pinion Lock.
- (c) Swing Back and Bed, operated with rack and pinion.

Our method of constructing the bed insures a smooth movement for focusing and provides an absolutely rigid support for the lens, even when the bellows is extended to its full capacity. The focusing pinion, when pushed in flush with the bed, securely locks the second section in any desired position. The extra length of bellows admits of copying and other close work, such as large heads, etc.

Model 46 is fitted with the Centar Lens, Series II., described on page 41. The back combination, when used alone, forms a most excellent type of long focus single achromatic lens—of great value for photographing distant objects, mountain scenery, etc. Fitted to the lens is our highest grade shutter—the No. 1 Century Automatic, with triplicate movement and separate lever for throwing back the shutter leaves when focusing,—a new and exclusive Century feature. The shutter is illustrated and described on page 42.

Model 46 is a Camera representing in a high degree "Century Quality"—a quality that stands to-day without a peer—a claim fully justified by the popularity of our Cameras among the best amateur and professional photographers everywhere.

Our customers are the best advertisers we have. Unsolicited letters similar to the following reach us constantly from patrons whose experience and testimony show that we are warranted in the claims presented for the quality of our goods:

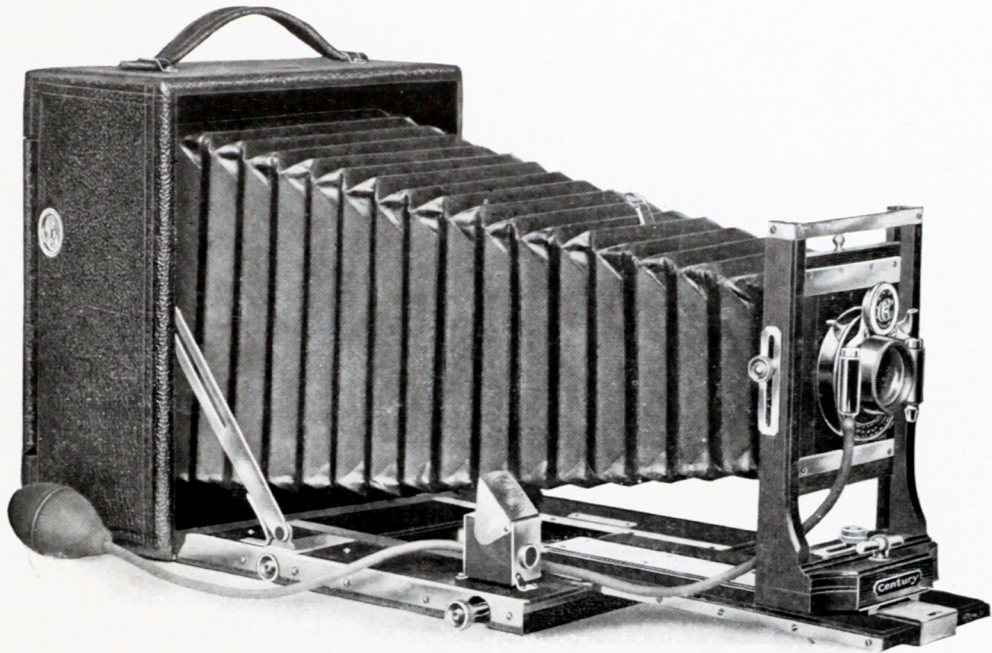


"I have just purchased from one of your New York dealers a Century Model 46, equipped with Goerz Lens. I am much pleased with it.

"I have owned many Cameras, but I believe I can safely state, without fear of contradiction, that I now have not only the best Camera that money can buy, but also the most handsome and complete instrument that modern science can produce."

Very respectfully,

F. W. HELLRIEGEL.



CENTURY CAMERA, MODEL 46, EXTENDED.
WITH REVOLVING BACK.

Century Model 46 is furnished with a handsome sole leather carrying case, having a compartment at one end to accommodate five extra plate holders—six in all. Our cases are made on a new plan, with solid corners—not stitched on all sides. Each has a substantial handle and clips for attaching a shoulder strap.

The film pack adapter and cartridge roll holder can both be adjusted to Model 46 without losing any of the advantages possessed by it as a plate camera. The roll holder is described on page 47.

PRICE:

Including one Double Plate Holder and Sole Leather Carrying Case with handle.

Century Camera, Model 46,	4 x 5	5 x 7
	\$32.00	\$40.00
Extra Double Plate Holders, each,	1.00	1.25

The Century Grand.

WITH REVOLVING BACK.

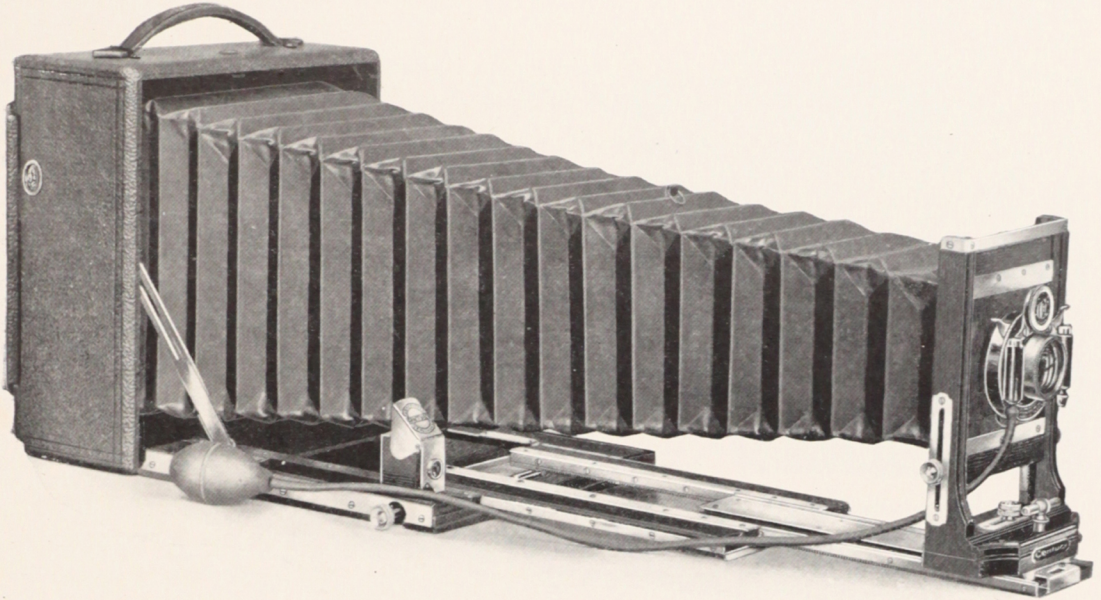
The 1905 Century Grand is a masterpiece of the Camera maker's art, and a worthy leader of the Century series. It is a superb instrument from every point of view, and results from careful study on the part of those who have been engaged in designing cameras of the best type for years. It contains more improvements and exclusive features than any other folding hand camera in the market. The general design, solid construction, rigidity of every part, portability, easy means of manipulating all adjustments, and fine finish of both wood and brass work are noticeable features.

The Century Grand is built throughout of mahogany—selected and kiln dried, with all joints dovetailed. The outside case is handsomely covered with fine black special grain cowhide, and has a padded handle for carrying. The metal work is polished and lacquered in a rich gold color. The bellows is made from red leather, lined with rubber cloth, and attached by rubber cement, insuring elasticity and rendering it absolutely light-proof.

The triple section telescopic bed is made on an entirely new principle, and so arranged that the different sections operate by a single pinion at the side. When pushed in this pinion acts as a lock, holding the different sections of the bed absolutely firm and rigid at any desired point. The section carrying lens and shutter moves first by turning the milled head, and when fully extended locks automatically into, and at the same time carries forward the second section by means of a continuous rack. An entirely new method is employed by us in fitting the first section of the bed, which gives an exceptionally easy and smooth movement when focusing, as the same amount of friction exists whether the first section of the bed is entirely or only partly extended.



Each of the three sections is bound with metal to prevent any possibility of lost motion, and brass guides on top of the bed serve to insure strength and perfect rigidity,—a feature which will appeal very strongly to all photographers. The bed is attached to the case by a brass piano hinge extending the full width, adding strength and beauty to the entire equipment.



THE CENTURY GRAND, FULLY EXTENDED.

The front has both vertical and horizontal movements, the former being adjusted by a fine rack and pinion. It is held securely at any desired point on the bed by an automatic clamp.

The Century Grand for 1905 is regularly fitted with our new Centar Lens, Series II. This lens is a convertible type, perfectly achromatic, rectilinear, and of superior covering power and definition. It is admirably adapted for portraits, groups, architectural subjects, marine views, landscapes, copying, flashlight pictures, etc.,—in fact, the Centar Lens is designed for general photography.

The front and back combinations may be used alone as long focus objectives. In this form they are particularly well adapted for distant views, mountain scenery, and all remote subjects, where extreme speed is not essential. The focal length of either the front or back lens when used alone is double that of the complete lens, and the size of the image is therefore about twice that given by the compound lens.



We furnish the Century Grand, if preferred, fitted with 1904 Planatic Lens, Series III., the front combination of which is longer focus than the back. Price is the same as quoted for the Centar, Series II.

The latest and best Shutter—our No. 1 Automatic—is fitted to the Century Grand. Its many attractive features and advantages will be appreciated by both amateur and professional photographers. The Automatic operates for instantaneous, time and bulb exposures. The mechanism is so constructed that in moving to terminate an exposure it will automatically set itself for the next exposure. There can be no question as to “whether the Shutter is set”—it is always ready for instant use, being released and set by simply pressing the bulb. The diaphragms are marked in accordance with the standard U. S. system. Both Lens and Shutter are fully described on pages 40 to 43.

The Century Grand is enclosed in a handsome sole leather carrying case, plush lined, having a compartment at one end to accommodate five extra plate holders. We have spared no expense to make the Century Grand absolutely the best camera in every detail of construction ever offered, and the success of our efforts is attested by the enviable reputation this instrument has made for itself among the foremost photographers in a short space of time. Read description of the Revolving Back, page 6, an exclusive Century feature.

Our claims for superiority in design, general construction and numerous exclusive features, are all justified—as an examination will prove. The Century Grand speaks for itself, and stands to-day as a representative Camera of the highest possible type.

Would you know the fundamental secret of Century superiority? It is because a partner in the business, with years of practical experience, heads every department, and to his work he gives the best that is in him. Years of quality—years of progress—are embodied in Century Cameras.

PRICE :

Including one Double Plate Holder and handsome Plush Lined Sole Leather Case.

	4 x 5	5 x 7	6½ x 8½
Century Grand, Centar Lens, Series II.,	\$40.00	\$50.00	\$67.00
Extra Double Plate Holders, each,	1.00	1.25	1.75

Century Grand Senior.

WITH REVOLVING BACK.

Patented March 29th, 1904.

Camera making, as a fine art, has never been more highly exemplified than by the product of the Century Camera Company—a fact conceded by experienced and critical photographers.

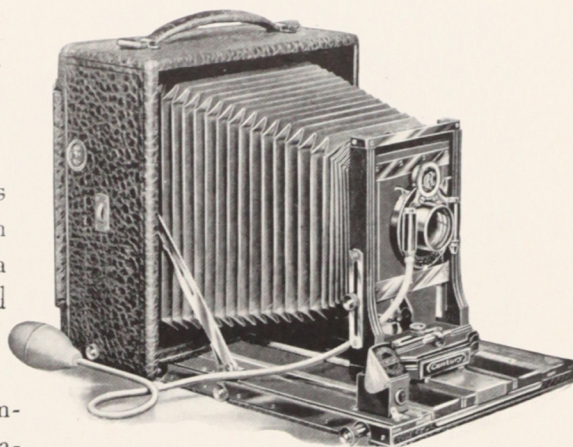
One of the latest additions to the Century line is the Grand Senior—a camera that will add materially to our reputation for progressiveness and originality,—a camera that no illustration or description can do justice to, or even portray in a small measure, the inventive genius—skill in designing, perfection and simplification of adjustments embodied in its manufacture,—culminating in the most complete and perfect camera ever placed on the market.

The Century Grand Senior, while differing in construction from the regular Grand, contains all the features which have made that camera so popular, and in addition has—

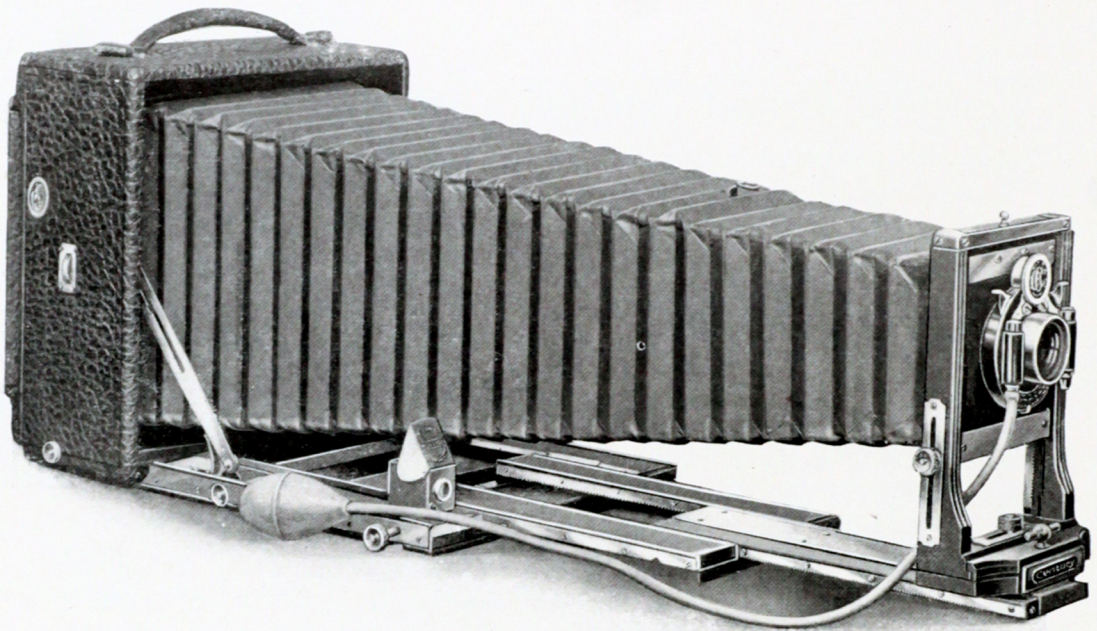
- (a) Detachable Side Arms, for dropping bed.
- (b) Supplementary Bed, for using extreme Wide Angle lens, Rack and Pinion movement.
- (c) Vertical Central Swing Back.
- (d) Horizontal Side Swing, for correcting violent perspective lines.

In connection with the Century Swing Bed, the vertical and horizontal Swing Backs give the greatest range and adjustment ever attained in a hand camera,—and, note this:—the Grand Senior is the only cycle type of camera having Double swing back and swing bed, free from all complicated parts and so neatly adapted as to add practically nothing to either the bulk or weight.

The telescopic bed is made in three sections, all operated by a single pinion, with the Century pinion lock. The same amount of friction exists whether the front section is fully or only partly extended, and by a peculiar arrangement of the wood and metal parts, the bed resists atmospheric changes to a remarkable degree.



Century Grand Senior, Partly Extended.



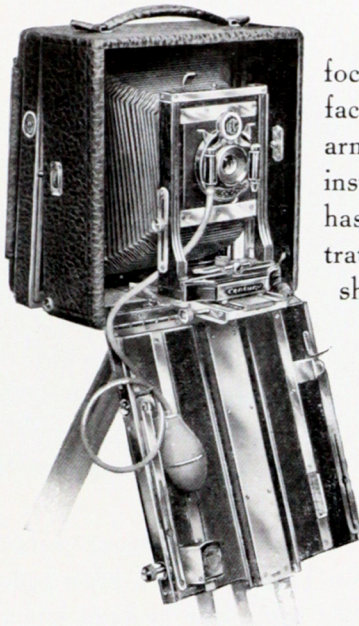
CENTURY GRAND SENIOR, FULLY EXTENDED.

The section carrying lens and shutter moves first by turning the milled head, and when fully extended locks automatically into, and at the same time carries forward the second section by means of a continuous rack. Each of the three sections is bound with metal to prevent any possibility of lost motion, and brass guides on top of the bed serve to insure strength and perfect rigidity,—a feature which will appeal very strongly to all photographers. The bed is attached to the case by a piano hinge extending the full width, adding strength and beauty to the entire equipment.

The front has both vertical and horizontal movements, the former being governed by a fine rack and self-locking pinion. It is held securely at any desired point on the bed by our new automatic clamp.

The Grand Senior is regularly fitted with our new Centar Lens, Series II. This is a lens of the convertible type, perfectly achromatic, rectilinear, and of superior covering power and definition. It is described on pages 40 and 41.

We also furnish the Century Grand Senior fitted with 1904 Planatic Lens, Series III.—three focus. Price is the same as quoted for the Centar, Series II.



Showing Supplementary Bed attached for Wide Angle Lens.

By means of a supplementary bed, very short focus or wide angle lenses can be used with equal facility. The main bed drops by detaching the side arms, and the supplementary bed, which can be instantly adjusted, supports the front. This bed also has rack and pinion for accurate focusing. The illustration on this page shows the Grand Senior with the short bed and wide angle lens attached.

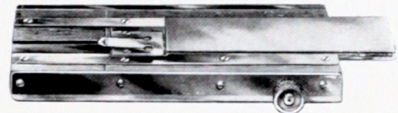
Our No. 1 Automatic shutter is fitted to the Century Grand Senior, and its many attractive features will be appreciated by both amateur and professional photographers. See page 42.

The small illustration at the right shows the supplementary bed, with rack and pinion movement, which takes the place of the main bed, supporting the front, when extreme wide angle lenses are employed. We do not believe in cutting or dividing the main bed to clear the field included by a short focus lens.

Such construction involves complicated fittings, and it is obvious that a cut or divided bed cannot be as strong or rigid as one remaining intact.

The Wide Angle Bed, when adjusted, locks automatically in place, and cannot become accidentally detached. The horizontal and vertical swings are available for both regular and wide angle lenses.

As previously stated, the Century Grand Senior must be seen to fully appreciate its many meritorious and exclusive features. Our claims for superiority—in design,—in construction,—in adjustments,—in finish,—in optical and mechanical excellence,—will be fully substantiated by a critical examination. The Century Grand Senior and regular Century Grand stand to-day as the typical representative high grade Cameras of the world.



Supplementary Bed for Wide Angle Lenses.

PRICE:

Including one Double Plate Holder and handsome Plush Lined Sole Leather Case.

	4 x 5	5 x 7	6½ x 8½
Century Grand Senior, Centar Lens, Series II.,	\$53.00	\$63.00	\$80.00
Extra Double Plate Holders, each,	1.00	1.25	1.75
Century Curtain Slide Shutter, fitted,	22.50	25.00	30.00

Long Focus Century Grand.

The Long Focus Grand, as indicated by its name, is designed for work requiring an exceptionally long bellows, and yet it is perfectly adapted for medium and short focus, wide angle lenses as well.

For the student in science, for universities, schools and colleges, the Long Focus Grand is especially desirable.

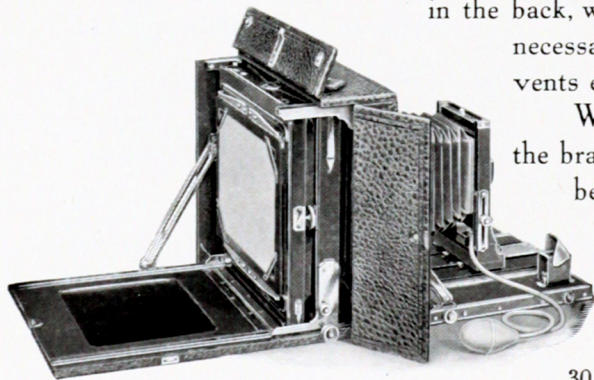
It is the most compact and portable instrument of its class in the market. An idea of the difference in size between the "Century" and others, can be obtained when we state that the 5 x 7 Long Focus Grand, closed, measures only $5\frac{1}{4} \times 9\frac{7}{8} \times 10$ inches, yet has a focal capacity of 28 inches. Adapted for every branch of photography, it can be truthfully designated a universal camera in the full sense of the word.

Fitted with reversible back, double swing, double sliding front, patent automatic bed clamp, rack and pinion with locks on both front and back beds, Planatic convertible lens, Century automatic shutter, triple lens brilliant finder, in fact all improvements that have made the "Century" famous.

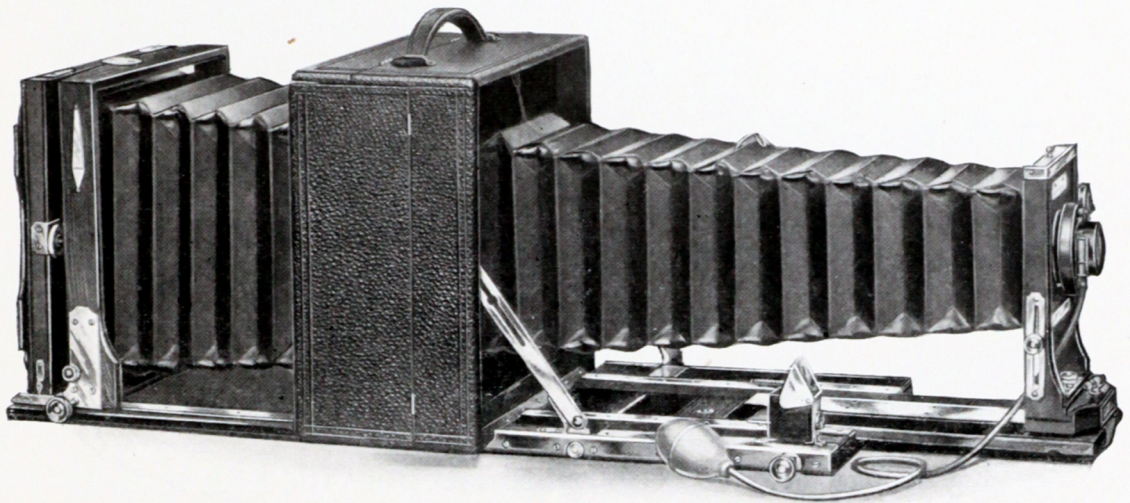
As shown by the illustration, page 31, both the front and back, when dropped in a horizontal position, make a rigid platform upon which the bellows can be fully extended when very long focus lenses are employed, or for copying, enlarging, and all other purposes requiring the maximum focal capacity. A rack and pinion is fitted to both the front and rear beds. When the proper focus is secured, the front bed can be locked by simply pushing in the focusing pinion. The back is securely held in place by turning a milled head.

The image can be focused on the ground glass by simply dropping a panel in the back, while with cameras of other make it is necessary to drop the entire back, which prevents easy manipulation.

When a Wide Angle lens is employed, the brass side arms are detached, and the front bed or platform dropped below the box. In this position the focus is adjusted by a fine rack and pinion on the rear bed. The pinion head is spring actuated, and automatically moves



Lid raised for reversing back, without extending rear bellows.



LONG FOCUS CENTURY GRAND, FULLY EXTENDED.

beyond the edge of the bed when the camera is opened, allowing the head to be easily grasped.

The front bed is telescopic and metal bound to prevent lost motion, and brass guides on top insure strength and perfect rigidity—even with the bellows fully extended. Both horizontal and vertical swings are fitted, the former being adjusted by a micrometer screw, the latter with rack and pinion.

We regularly furnish this camera with Planatic Lens Series III., and No. 1 Automatic shutter.

PRICE:

Including one Double Plate Holder.

	5 x 7	6½ x 8½
Long Focus Century Grand,	\$55.00	\$75.00
Extra Double Plate Holders, each,	1.25	1.75
Sole Leather Case, Plush Lined for Camera only,	6.00	7.50
Case for Camera and extra Holders,	7.00	8.50

Grand and Grand Senior Specials.

THE ACME OF PERFECTION.

The Century Grand Special and the Grand Senior Special are our regular Grand Cameras described on pages 24 to 29, substituting a Goerz Double Anastigmat Lens fitted with either No. 1 Century Automatic, or Bausch & Lomb Volute Shutter.

The characteristic qualities found in Goerz Double Anastigmat Lenses and which have made them famous the world over, are, extreme rapidity, minute definition, great covering power, and the utmost depth of focus.

They are adapted for every conceivable photographic purpose—portraiture, groups, animal life, architecture, interiors, and for copying.

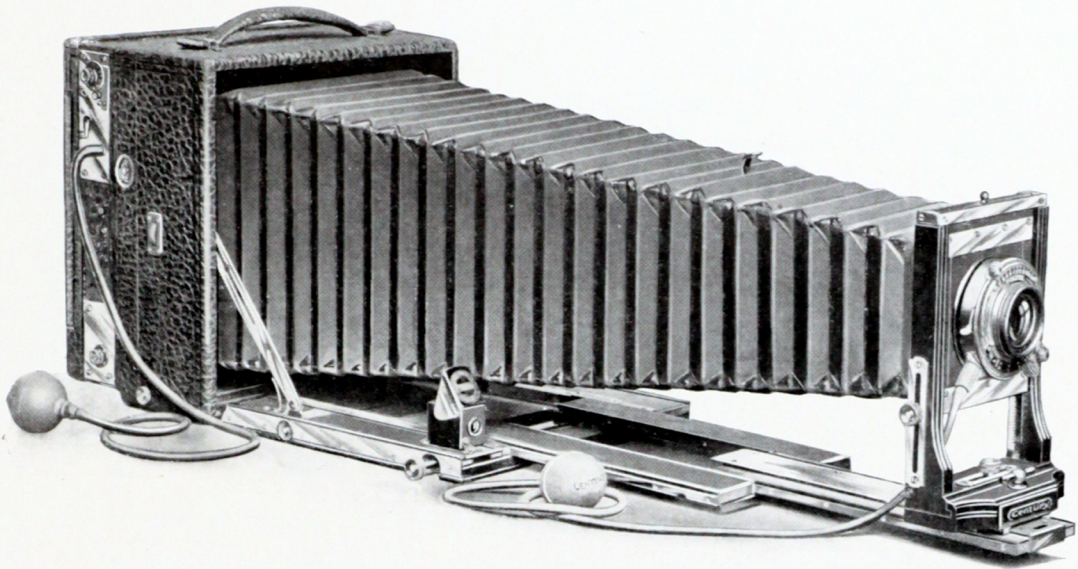
The speed of the Goerz Double Anastigmats, Series III., F:6.8, is actual, and combined with their even illumination insures the taking of instantaneous views at late hours or on dull days.

For portraiture, the Goerz Double Anastigmat is an ideal lens. It possesses every qualification of the old portrait lenses, and in reality surpasses them. It is possible to have all the softness and diffusion of the old type, and yet, if necessary, the depth of focus can be made use of. This latter quality is very essential for groups.

The definition obtained by the Goerz Double Anastigmat, Series III., is microscopically sharp, even to the very corners of the plate. The disturbing defects of chromatic aberration and distortion are entirely eliminated, and the astigmatism and curvature of field are absolutely corrected up to an angle of 72° when using the full aperture. As the image is perfectly sharp, even when using a large aperture, the definition, brilliancy and depth of every point of the field is uniform.

The front or back lens may be used as a long focus objective, suitable for all classes of work where extreme rapidity is not required. The focal length is about double that of the complete lens, and the size of the image is, therefore, about twice that given by the complete lens.

We also furnish the Grand and Grand Senior Specials with other lenses, as will be noted by reference to page 34. If any make of lens is desired that we do not list, price of the outfit will be cheerfully given upon request.



Grand and Grand Senior Specials.

The illustration shows the Grand Senior Special with Volute Shutter, and also the Century Curtain Slide Shutter for ultra rapid exposures. The Bausch & Lomb Volute represents the highest type of Diaphragm Shutter. It is made of aluminum,—very handsome in appearance, is rapid, compact, convenient, dust proof and durable. It operates for instantaneous, time and bulb exposures. The No. 1 size has speeds ranging from 1-150th of a second to 3 seconds, while the maximum speed of the No. 2 Shutter is 1-100th, and the No. 3, 1-75th.

When the exposure is made the shutter opens instantly and remains open to the full extent until the exposure is completed, when it closes instantly, thus giving the greatest possible exposure and the correct relative exposure for all speeds.

The Century Curtain Slide Shutter is a most valuable addition to the outfit for subjects requiring exceedingly short exposures, such as horse and bicycle races, foot ball games, railroad trains, outdoor sports, etc. For this class of work, no shutter approaches in speed the Curtain Slide type, operating in the focal plane or directly across the sensitive plate, and for this reason it is capable of giving results which cannot be obtained in any other way. The additional cost of the Curtain Shutter is given under the price of the Camera. A detailed description will be found on page 44.

Each Century Grand Special is enclosed in a handsome sole leather carrying case, velvet lined, with lock, key, and two snap catches. The case has a compartment for five extra plate holders.

The Century Grand and Century Grand Senior Specials comprise absolutely the best obtainable in camera, lens and shutter. Nothing has been omitted which could in any way enhance their value as strictly high grade equipments in the full sense of the word.

The fitting of shutters to Anastigmat Lenses is a delicate operation, as each lens must be centered and correctly mounted in order to obtain the best results. We have exceptional facilities for the accurate adjustment of lenses, and guarantee our work to be absolutely correct.

Prices of Century Grand Special and Grand Senior Special.

Including one Holder, Sole Leather Case, velvet lined, with lock and key.

	4 x 5	5 x 7	6½ x 8½
Century Grand Special, with Goerz Lens, Series III., and No. 1 Automatic Shutter,	No. 1 Lens, \$78.40	No. 2 Lens, \$ 93.60 No. 3 Lens, 103.50	No. 4 Lens, \$127.50
With Goerz Lens, Type B, Series 1B,	No. 1 Lens, \$80.20	No. 2 Lens, 96.30 No. 3 Lens, 107.60	(See Note below.)
With Bausch & Lomb Plastigmat Lens,	No. 2 Lens, 77.70	No. 3 Lens, 94.90	No. 5 Lens, 133.70
With Zeiss Convertible Protar Lens, Series VIIA,	No. 3 Lens, 97.20	No. 8 Lens, 121.90	No. 11 Lens, 153.20
Zeiss Wide Angle Protar Lens, Series V.,	22.50	22.50	28.00
B. & L. Volute Shutter, in place of No. 1 Automatic, extra,	*No. 1, 14.30	†No. 2, 16.30	‡No. 3, 16.70
Century Curtain Slide Shutter fitted, extra,	22.50	25.00	30.00

* The No. 1 Volute Shutter is fitted to Goerz Lenses, Series III., No. 1 and No. 2, Plastigmats No. 2 and No. 3, Zeiss Protar VIIA, No. 3 and No. 8.

† The No. 2 Volute Shutter is fitted to Goerz Lenses, Series III., No. 3 and No. 4, Type B, No. 1, Plastigmat No. 5, Zeiss Protar VIIA, No. 11.

‡ The No. 3 Volute Shutter is fitted to Goerz Lenses, Type B, No. 2 and No. 3.

NOTE.—The Type B, Series 1B, in 6½ x 8½ size, is too large to attach either No. 1 Automatic or B. & L. Volute Shutter.

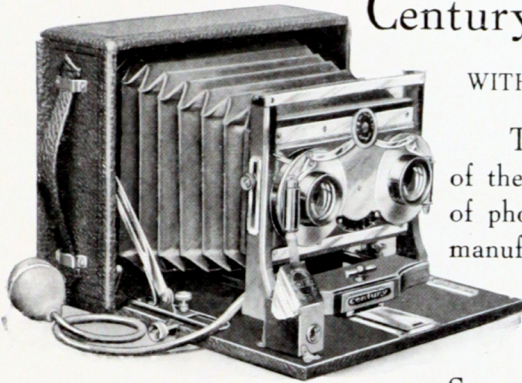
Price of Century Grand Senior Special.

For price of the Grand Senior Special, add to price of Grand Special as above,
4 x 5, 5 x 7, or 6½ x 8½,

\$13.00

Century Stereoscopic Cameras

WITH AUTOMATIC ROLLER DIVISION.



The making of stereoscopic pictures is one of the most attractive and fascinating branches of photography. For this class of work we manufacture a Special Stereo outfit, and also list Century Models 42, 44, 46 and the Century Grand, with a wide front and a matched pair of lenses. The Special

Stereoscopic Century contains every requisite adjustment,—including rack and pinion, swing back, swing bed, adjustable front, automatic bed clamp, No. 3 Automatic shutter, and a pair of Rapid Rectilinear Lenses. It is extremely portable, measuring only $2\frac{1}{2} \times 6\frac{1}{2} \times 8\frac{1}{2}$ inches, constructed throughout of mahogany, and covered with fine black cowhide leather.

The Stereoscopic Centurys, Models 42, 44, 46 and the Century Grand, all correspond with our regular models in general design and adjustments, but in place of one lens for full size 5 x 7 pictures, we fit a matched pair of lenses and our Automatic Double Valve Stereoscopic Shutter. Model 42 has Rapid Rectilinear Lenses, while Models 44, 46 and the Century Grand are fitted with Rapid Symmetrical Lenses. The regular lens and shutter for making full sized 5 x 7 pictures can be added to the outfit at any time.

Century Stereoscopic Cameras are all fitted with our new Automatic Roller Division—the best device for dividing the plate ever made.

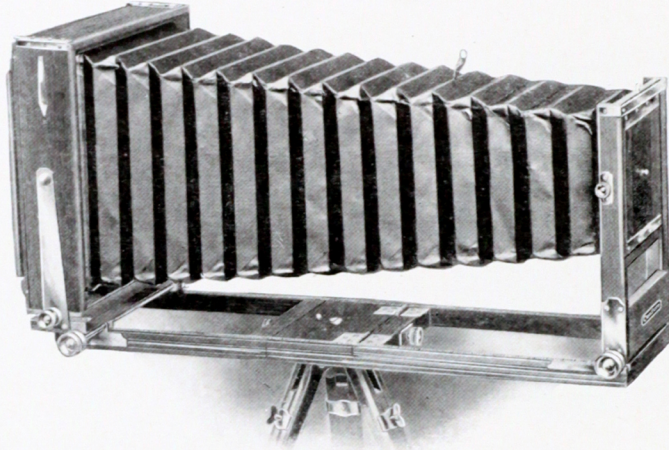
It works on the principle of a window shade—unwinding as the front of the Camera is extended, and automatically rolling up when Camera is closed.



PRICE :

Including Sole Leather Case, and one Double Plate Holder.

Special Stereoscopic Century,	\$35.00	Stereo Century, Model 46,	60.00
Stereo Century, Model 42,	48.00	Stereo Century Grand,	70.00
Stereo Century, Model 44,	56.00	Extra Plate Holders, each,	1.25



Century View Camera No. 1.

WITH DOUBLE GROOVED BED.

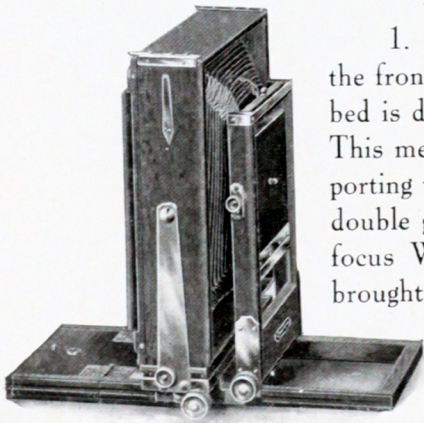
Patented July 15th, 1902.

The Century View Camera fully meets the demands for an instrument combining in the highest degree, convenience, strength, compactness, portability, ease of manipulation and adaptability for the wide range of work constantly coming before the professional, and which advanced amateurs often attempt with but little satisfaction, owing to the very limited field of work covered by many types of Cameras.

Special Features and Points of Excellence.

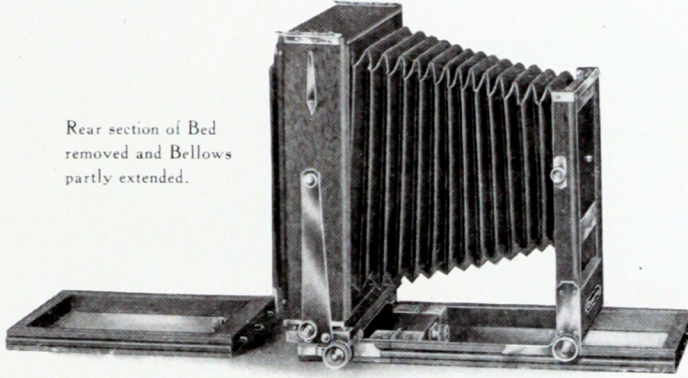
1. A Double Grooved Bed. The scheme of operating the front and back of the Camera in separate grooves on the bed is distinctly a "Century idea," covered by letters patent. This method permits the use of extra long side brackets supporting the front and back, insuring strength and solidity. A double grooved bed also provides for a very much shorter focus Wide Angle lens, as the front carrying lens can be brought closer to the ground glass than is possible with the ordinary type of view camera.

2. Perfect rigidity of every part in any position.



Camera arranged for extreme
Wide Angle Lens

Rear section of Bed removed and Bellows partly extended.



3. Extreme length of bellows for copying, enlarging, telephoto and other work requiring long focus lenses.

4. The focus may be adjusted by moving the front or back as preferred; both are operated by rack and pinion.

5. Three Section Bed. The second section is hinged, and arranged to fold close to the Camera, even when lens and shutter are attached. The third section adjusts at the back by means of a large thumb-screw, and two pins fitting in brass sockets, avoiding any lost motion.

6. Automatic lock, which prevents racking back beyond the edge of bed.

7. Adjustable sliding front of great range above and below the center.

8. Both horizontal and vertical swings operating at the center, with set screws at either side. Brass plumb indicator for adjusting swing back.

9. Reversible Back for horizontal and upright views.

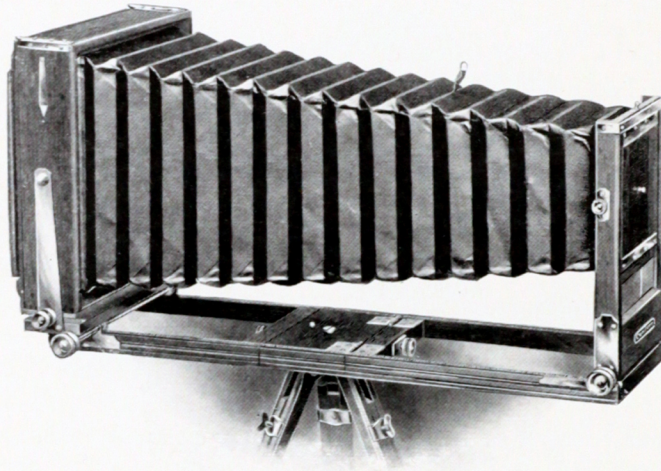
Focal Capacity or Length of Bellows.

5 x 7—22 inches. 6½ x 8½—27 inches. 8 x 10—30 inches. 11 x 14—37 inches.

PRICE:

Including one Plate Holder and Canvas Case with Space for Five Holders.

	5 x 7	6½ x 8½	8 x 10	11 x 14
Century View Camera, No. 1,	\$21.00	\$22.00	\$25.00	\$36.00
Complete with Rapid Symmetrical Lens and No. 4 Shutter,	31.00	37.00	43.00	
Complete with Rapid Symmetrical Lens and No. 1 Shutter,	34.50	40.50	46.50	
Extra Double Plate Holders, each,	1.25	1.75	2.00	4.50
Carrying Case, if made to hold tripod, extra,	.75	.75	.75	



Century View Camera No. 2.

The No. 2 Century View Camera possesses all the numerous advantages and special features applied to Model 1, and in addition has :

- An auxiliary base attachment, for balancing camera on tripod.
- Extra large front and lens-board for inside shutters.
- Lens-board and front adjustable by rack and pinion.
- Both swings operated by rack and pinion.

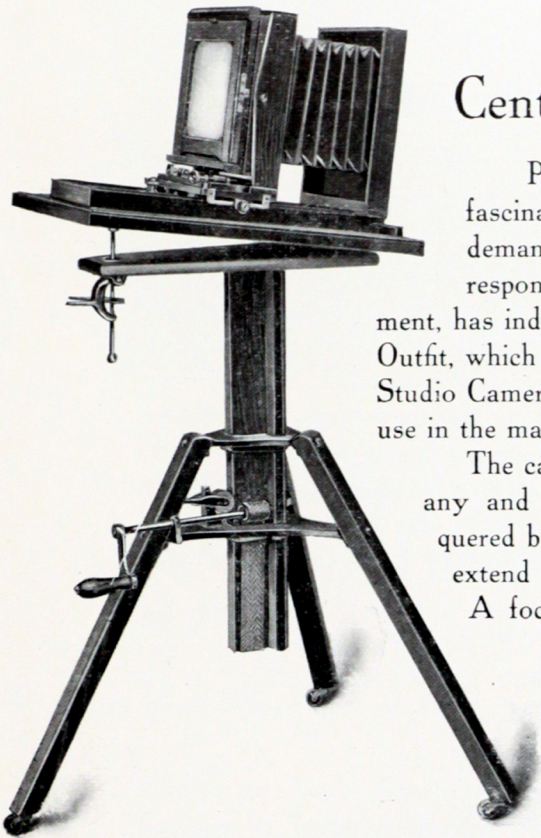
The auxiliary base (not shown in illustration) is in reality a supplementary bed on which the entire camera moves forward or back by rack and pinion, so that the weight is evenly distributed and the Camera always in perfect balance when on the tripod, no matter whether an extra long focus or a wide angle lens is employed. The advantage of this feature will at once appeal to both the professional and advanced amateur photographer. Made only in two sizes.

Length of Bellows, $6\frac{1}{2} \times 8\frac{1}{2}$, 27 inches; 8×10 , 30 inches.

PRICE :

Including one plate holder and canvas case with space for five holders.

	$6\frac{1}{2} \times 8\frac{1}{2}$	8×10
Century View Camera No. 2,	\$26.00	\$30.00
Complete with Rapid Symmetrical Lens and No. 4 Shutter,	41.00	48.00
Complete with Rapid Symmetrical Lens and No. 1 Shutter,	44.50	51.50
Extra Double Plate Holders, each,	1.75	2.00
Carrying Case, if made to hold tripod, extra,	.75	.75



Century Home Portrait Outfit

Portraiture is one of the most charming and fascinating branches of photography. The growing demand for a special amateur portrait camera, corresponding to the professional photographer's equipment, has induced us to present the Century Home Portrait Outfit, which in reality is a counterpart of our No. 1 regular Studio Camera—recognized as the best instrument for gallery use in the market.

The camera is made of selected, well seasoned mahogany and cherry, with metal parts of polished and lacquered brass. A knob on the bed is used to quickly extend the bellows, and a slight turn locks the back.

A focusing lever, for fine adjustment, is placed at the side, and automatically locks at any desired point. Both horizontal and vertical central swings are actuated by our new pivot rack and pinion movement. The lens board measures 7 inches square.

The Plate Holder is the regulation single holder, with non-detachable curtain slide, and made to receive the plate in either a vertical or horizontal position. By means of a sliding "cut off," two pictures can be made on a 5 x 7 plate. The regular Century double plate holder can be used with the Portrait Camera by means of an extra adapter.

The stand is adjustable and the crank handle is conveniently located. The patent tilting device for adjusting the rear of the camera is an entirely new design. A slight pressure of the thumb is all that is necessary when the top is to be lowered, while for tilting the camera forward you simply lift the rear of the top to the desired angle, and it will remain in position, being bound automatically. The top of the stand is covered with green felt. Made 5 x 7 size only.

PRICE:

Century Home Portrait Outfit, including		Home Portrait Stand only,	\$ 8.00
Camera, Curtain Holder and Stand,	\$30.00	Extra Curtain Holders, Reversible,	2.00
Camera and Curtain Slide Holder only,	25.00	Adapter to carry regular Double Holder,	5.00



Century Lenses.

Century Lenses are made in the largest and best equipped optical factory in the country, operated by Bausch & Lomb Optical Co., Rochester, N. Y.

In the construction of Century Lenses, every process from the selection of the raw material through the successive steps of grinding, polishing, cementing and mounting, are accurately controlled. Any error is detected in the particular step in which it occurs, so that our lenses, when ready for mounting, are correct,—both as to the material from which they are made, and the optical properties they possess. Every lens that does not reach the proper standard of quality to which all Century Lenses must conform, is rejected.

Our regular series of Lenses comprise:—

RAPID RECTILINEAR,
RAPID SYMMETRICAL,
CENTAR SERIES II.

The Century Rapid Rectilinear Lenses are composed of two achromatic combinations of equal focus. They are sufficiently rapid for general amateur work, and possess good covering power, depth and definition.

The Rapid Symmetrical is a higher type of lens than the Rectilinear, and possesses qualities not found in the ordinary double combination lenses of the Rectilinear form. They are made of superior glass and ground upon curves that insure increased covering power, ample speed for rapid instantaneous exposures, and a flat field.

The Centar Series II. is a convertible lens, perfectly achromatic, rectilinear and of superior covering power and definition. It is admirably adapted for portraits, groups, architectural subjects, marine views, landscapes, copying, etc., etc.

The front and back combinations may be used alone as long focus objectives. In this form they are particularly well adapted for distant views, mountain scenery, and all remote subjects, where extreme speed is not essential. The focal length of either front or back lens, when used alone, is double that of the complete lens, and the size of the image is, therefore, about twice that given by the complete lens.



Relative size of objects, using both Front and Back Combinations of Convertible Lens.



The same subject, made with Front or Back Combination of Convertible Lens.

Price List of Centar Lenses, Series II., With or Without Shutter.

No.	Sizes.	Equiv. Focus.	Focus of Back Lens.	With No. 1 Automatic Shutter.	With No. 4 Regular Shutter.	With Barrel and Iris Diaphragm. No Shutter.
1	3¼ x 4¼	6 in.	12 in.	\$21.00	\$17.00	\$12.00
2	4 x 5	6¾ in.	13½ in.	21.00	17.00	12.00
3	5 x 7	8¾ in.	17½ in.	23.00	19.00	14.00
4	6½ x 8½	10½ in.	21 in.	28.00	24.00	17.00
5	8 x 10	12 in.	24 in.	34.00	30.00	20.00

Wide Angle Lenses.

A Century Wide Angle Lens is a valuable addition to any outfit. It includes from twenty-five to thirty degrees wider field than the Rapid Rectilinear or Rapid Symmetrical Lenses, and is particularly valuable for confined situations—interiors and certain architectural subjects, for, being much shorter focus, it permits placing the camera closer to the object.

We mount Century Wide Angle Lenses to fit the same shutter and interchange with the regular Rectilinear, Rapid Symmetrical and Centar Lenses.

PRICE:

4 x 5, \$5.00

5 x 7, \$7.50

6½ x 8½, \$12.00

Century Portrait Attachment.

For making large portraits with short bellows cameras—like Models 40, 41 and 42. We can furnish this attachment for all makes of Cameras.

PRICE:

4 x 5, \$1.50

5 x 7, \$1.50

6½ x 8½, \$2.00

8 x 10, \$3.00

Century Shutters.

THREE NEW MODELS.



No. 1 Century Automatic.

Century Shutters are made especially for Century Cameras, and are exclusive in design and construction. They are beautifully finished, the bodies being a rich black with nickel fittings.

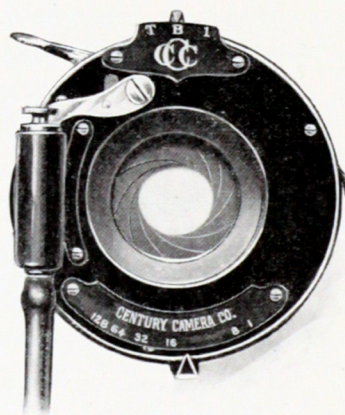
It is a fact worthy of consideration, that all screws, levers, cases and other working parts are measured, gauged and tested. The pneumatic retarding pistons upon which the accuracy of the various automatic exposures depends, are ground and fitted by hand, and carefully tested to a uniform standard. Even such minute details as the heads of screws used

to hold the parts together, receive individual attention, each screw being placed in a lathe and polished by hand with several grades of specially prepared polishing materials. The axis upon which leaves of the iris diaphragm move is accurately turned and carefully riveted in place by hand. The actuating springs, made of the finest tempered steel wire, are coiled by hand, securing the utmost uniformity and elasticity.

An Entirely New and Exclusive Feature

found in all regular Century shutters is a Separate Lever that throws back the shutter leaves when focusing. With all other iris diaphragm shutters it is necessary to set the dial for "time" exposures,—then press the bulb or trigger to open the lens. All setting and pressing is dispensed with in the Century Shutters this year, as it matters not how the indicator stands, when you wish to focus it is only necessary to adjust the focusing lever at the side. The shutter leaves will part,—giving full aperture of the lens.

All Century Shutters have triplicate movement,—operating for instantaneous, time and bulb exposures. The various speeds in fractional parts of seconds are governed by an indicator and dial at the top (excepting the No. 3 Automatic), while the iris



No. 3 Century Automatic.

diaphragms are regulated by a lever at the bottom of the shutter. The various apertures are marked on a scale in accordance with the U. S. system.

The first cut on page 42 shows our new No. 1 Automatic Double Valve Shutter.

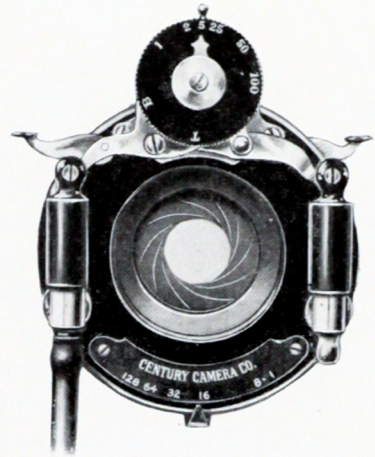
The mechanism is so arranged that after an exposure is completed the shutter automatically sets itself for the next picture. There can never be a question as to "whether the shutter is set,"—it is ready at all times, being released and set simultaneously by either the finger or the bulb.

The shutter blades are manufactured of a special material not affected by variation in temperature, and are shaped so as to give the most even illumination.

Our No. 3 Automatic Shutter, shown by cut No. 2, is the neatest and best moderate priced shutter on the market. It gives three different exposures, viz.: time, bulb and instantaneous. By moving the indicator at the top, the shutter is quickly adjusted for the desired exposure.

The No. 4 Regular Double Valve Shutter is one of the best types for general use yet devised. The ease of adjustment, perfect working of all parts, compactness and attractive design are noticeable features. The shutter is set by a lever at the top. Back of the shutter blades, which are shaped to give as even an illumination as possible, there is an Iris Diaphragm, operated by an index lever at the bottom by which any desired size of stop can be obtained.

On a dial at the top the various degrees of speed are indicated in fractional parts of seconds, and exposures of different lengths are secured by simply turning a milled head to the right or left. The speeds are controlled by a patent pneumatic device. All Century Shutters are supplied with Bulb and Tube.



No. 4 Century
Regular Double Valve.

Price List of Century Shutters.

	3¼ x 4¼	4 x 5	5 x 7	6½ x 8½	8 x 10
No. 1 Century Automatic Shutter,	\$10.00	\$10.00	\$10.00	\$12.00	\$14.00
No. 3 Century Automatic Shutter,	4.00	4.00			
No. 4 Century Regular Shutter,	6.00	6.00	6.00	8.00	10.00

When shutters are ordered for lenses other than the regular "Century," \$1.00 must be added to above prices to cover expense of fitting.

Century Curtain Shutter.

Patented June 14th, 1904. No. 762424.

THE MOST PRACTICAL SHUTTER FOR ULTRA RAPID EXPOSURES.

The special advantages of a Curtain Slide or Focal Plane form of Shutter are just beginning to be appreciated by amateur photographers. The ordinary style of shutter is perfectly satisfactory for subjects which do not require exceedingly short exposures, but to photograph rapidly moving objects without showing motion, such as horse and bicycle races, foot ball games, railroad trains, athletic sports, etc., there is no type of shutter which approaches in speed the Curtain Slide, and for this reason it is capable of giving results which cannot be obtained in any other manner. The principle upon which it is constructed not only gives the maximum in speed, but at the same time the plate receives a greater volume of light than with any other type of shutter.

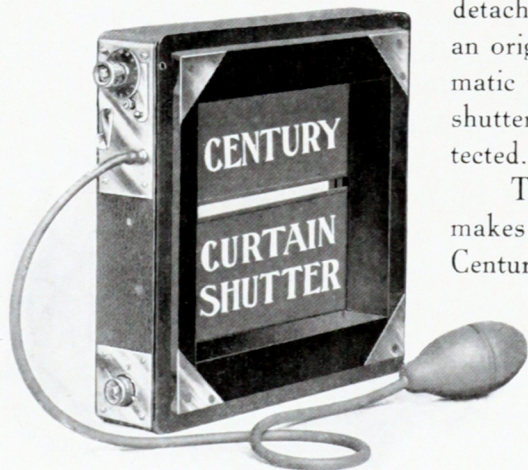
The idea of making an exposure by means of a curtain working in front of the plate is not new, but we have embodied in the Century Shutter a great many new features, not the least prominent of which is the method of adjusting the width of the curtain aperture from the outside. This is accomplished by simply turning the milled head used for setting the shutter, after throwing back a lever at the top. By adjusting a tension spring at the bottom, and varying the width of the curtain aperture, exposures may be made ranging from "time" to the 1-1200th part of a second. The different degrees of speed are shown by an indicator.

For focusing, the curtain can be dropped, which avoids any necessity of detaching the shutter. Another important point—an original Century idea—is the fact that the pneumatic release and all other working parts of the shutter are entirely inside, and thereby fully protected.

The Century Shutter can be adapted to all makes of folding plate cameras. It is fitted for Century cameras without additional charge, but when ordered for other cameras we add cost of adapting.

PRICE:

4 x 5	5 x 7	6½ x 8½	8 x 10
\$22.50	\$25.00	\$30.00	\$35.00



Speeds of Shutters.

When photographing objects in motion there is a minimum speed at which the shutter must work to obtain a negative perfectly sharp and free from blur. It is not wise to set the shutter at a speed faster than absolutely necessary, for the slower the speed the more chance of getting a fully timed plate. An over-exposed plate can be held back in developing—an under-timed plate is usually beyond hope.

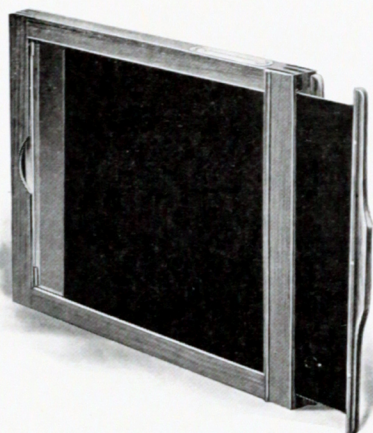
The fact should not be overlooked that the apparent speed of an object is considerably reduced according to the angle at which it approaches or recedes from the Camera. When that angle is sixty degrees, the apparent speed is about one-half the actual speed, consequently the exposure may be nearly twice as long, and yet a sharp image secured. A little experience will soon demonstrate what speed, under given conditions, will yield the best results.



COPYRIGHTED.

Made with a Curtain Shutter
1-1200 of a second.

NEGATIVE BY F. H. SMYTH, NEW YORK.



Century Plate Holders—New Model.

WITH PATENT SPRING BAR.

It is obvious that perfect pictures cannot be obtained from fogged plates. Fog results, many times, from the use of defective holders,—holders which are faulty in design and construction. We can only guarantee successful results when our own holders are used in Century Cameras.

Century Plate Holders are made throughout of hard wood, all joints dovetailed, and fitted with our light-excluding shutter—a perfect device—which

prevents light passing through the narrow opening when the slide is withdrawn. They are compact, light, and easy to load, and the plate can be inserted or removed without touching the sensitive surface. The holder is designed so as to allow the full width of the plate being exposed.

A celluloid tablet, on which may be written data concerning exposures, is attached to each holder, a feature that every photographer will appreciate,—“Century” Quality once more.

To fill the holder, it is only necessary to rest the plate on a wooden ledge or bar at one end, press the bar down and the plate falls into place.

Unless otherwise ordered, we fit all Century Holders with special black press-board slides—experience having demonstrated their superiority over hard rubber. We use a material for slides made to our order especially for Century Holders. It is cut and coated in our own factory. Century Holder Slides

Will not electrify and cause fog;

Will not collect dust;

Will not crack or split;—

Conditions which it is impossible to avoid with hard rubber.

However, we give an option on holder slides, and with holders up to and including 8 x 10, supply hard rubber if preferred, but we do not guarantee rubber slides against either breakage or the fogging of plates.

PRICE:

3¼ x 4¼, each, \$1.00

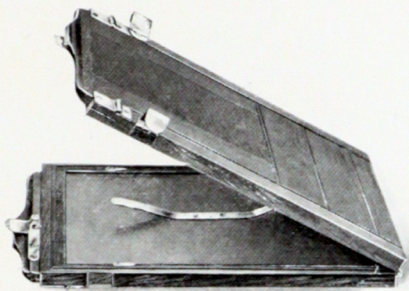
5 x 7 each, \$1.25

8 x 10, each, \$2.00

4 x 5 each, 1.00

6½ x 8½ each, 1.75

11 x 14, each, 4.50



Century Book Holder.

WITH NON-DETACHABLE MAHOGANY SLIDES.

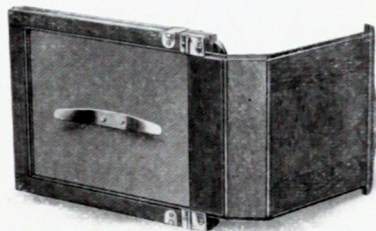
The book form of Plate Holder has long been a most popular model with European photographers. While more costly to manufacture than the ordinary type of holder, it possesses

advantages that strongly appeal to many advanced amateurs, compensating for the difference in price.

As shown by the illustration, the holder opens like a book for the purpose of loading. As every photographer knows, plates will vary more or less in thickness. To accommodate this variation, the Century Book Holder has a metal septum with spring attached, which is placed between the two plates, insuring absolute register, no matter how thick or thin the glass may be.

In place of the usual removable slides, all our book holders are fitted with polished mahogany, non-detachable slides, which avoid the possibility of "fogging" when making the exposure.

With all Century Grand and Grand Senior Cameras, we will substitute the book holder in place of regular, if desired, for the difference in price.



PRICE:

4 x 5, each, \$2.50

5 x 7, each, \$3.00

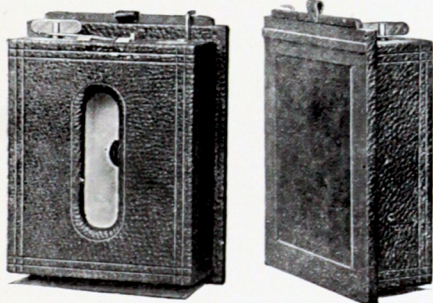
Daylight Roll Holders for Cartridge Film.

The Roll Holder is about the size of three double plate holders, and will hold Film Cartridges of twelve exposures. By means of the Cartridge Roll Holders those desiring to avail themselves of the advantages of film may do so at small outlay, as the Film Holder is adaptable to all Centurys excepting Model 39 and Petite No. 1.

The Cartridge Holder loads in daylight, and is interchangeable with regular plate holders in the field.

PRICE:

	3¼ x 4¼	4 x 5	5 x 7
Cartridge Roll Holder fitted to			
Century Camera,	\$5.00	\$5.00	\$6.50



Parts and Accessories.

Carrying Cases.

Century Cases are made of the best sole leather with solid corners—not stitched. The Camera is carried in one end and extra plate holders in the other. Cases for all Grand Cameras are velvet lined.

Style Camera.	3¼ x 4¼	4 x 5	5 x 7	6½ x 8½
Century Models 39 and 40, Keratol,	\$1.50	\$1.50	\$2.25	
Models 41, 42, 44, 46,	3.50	4.00	5.00	\$6.50
Century Grand and Grand Senior,		5.00	6.00	8.00
Long Focus Grand, Camera only,			6.00	8.00
Petite Century's,	2.25	2.50	SHOULDER STRAPS. 56 in., 30c; 66 in., 40c; 70 in., 55c	
Petite Century's, velvet lined,	3.00	3.50		

Canvas Covered Cases for View Cameras.

	5 x 7	6½ x 8½	8 x 10	11 x 14
Century View No. 1 and No. 2,	\$2.00	\$2.25	\$2.50	\$3.50
Extra if made to hold tripod,	.75	.75	.75	
Extra for lock and key,	.75	.75	.75	1.00

Tripods.

Century Compact, Three Fold.			
No. 1,	\$1.70	No. 3,	\$3.50
No. 2½,	3.00	No. 4,	4.50

Inside Kits.

To fit any Holder.			
4 x 5	any opening,		.20
5 x 7	" "		.25
6½ x 8½	" "		.30
8 x 10	" "		.35

Lens-Boards.

For Century's up to 5 x 7,	.25
For Century's above 5 x 7,	.40
For Stereo Century,	.50
For View up to 8 x 10,	.40
For Century View, 11 x 14,	.70

Tripod Screws.

For Leg,	.25
For top, up to 11 x 14,	.30
For 11 x 14 top,	.40

Fine Ground Glass.

Extra Quality, Satin Finish.			
3¼ x 4¼,	.12	5 x 8,	.20
4 x 5,	.15	6½ x 8½,	.20
5 x 7,	.18	8 x 10,	.30

Holder Slides.

Hard Rubber or Press Board.			
3¼ x 4¼,	.20	6½ x 8½,	.50
4 x 5,	.25	8 x 10,	.65
5 x 7,	.35	11 x 14,	\$1.00

Century Needle Hole Attachment.

For making pictures without a lens. A very interesting experiment. Can be used with any Camera having removable lens-board. Price for Century Cameras, \$2.00. For other cameras, when lens-board is sent us, \$2.50. Descriptive circular mailed on request.

Patent Circular Level.

Best Camera Level made. Each one tested under high pressure for leakage, and guaranteed for one year from date of sale. Price, \$1.00.

Our Terms.

All quotations are f. o. b. Rochester. We make no charge for packing, and guarantee safe arrival of goods when forwarded by express. Shipments by mail are always at the risk of purchaser, and postage must invariably be added to the cost.

We prefer that remittance be made by draft on New York, post-office or express money order or registered letter. Personal checks, when from parties unknown to us, unless certified by the bank on which they are drawn, will delay shipment of goods until check can be collected. Ten cents must be added for cost of exchange.

For the convenience of our customers, we suggest they purchase through a regular dealer in photographic goods, thus saving time and express charges.

CENTURY CAMERA CO.,

Rochester, New York.

