

MANIPULATION OF
THE
PREMIER
CAMERA.

MANUFACTURED BY
ROCHESTER OPTICAL COMPANY.
ROCHESTER, N.Y.

PUBLISHED BY
ROCHESTER OPTICAL COMPANY,
ROCHESTER, N. Y.

INSTRUCTIONS FOR USING

THE PREMIER CAMERA.

Load the Plate Holder

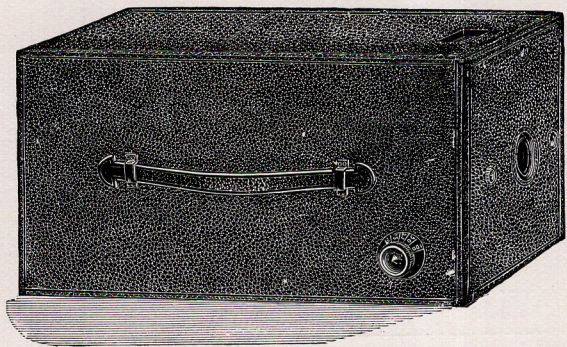
And place it in position between the ground glass frame and the rigid frame of the Camera.

Wind the Shutter

By turning the small knob on the front of Camera.

Draw the Slide

Of the Plate Holder, and all is ready for the exposure.



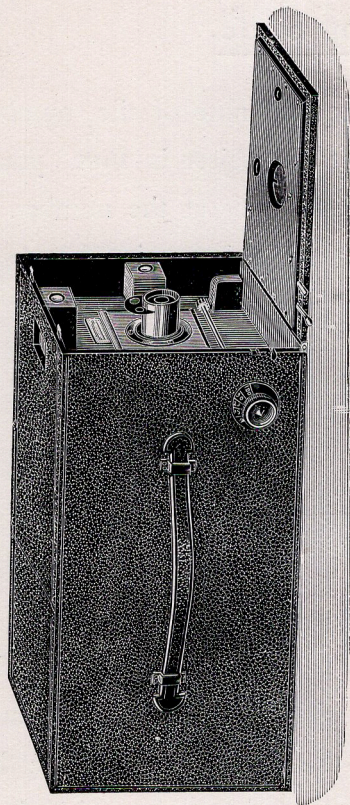
PREMIER, CLOSED.

Focusing Scale.

Make a mental note of the number of feet distant the object is from you and set the small point at the number. For instance, if the object to be photographed is about ten feet distant, place the point at the figure 10, and if fifty feet distant, set at the 50 ft. mark.

Hold the Camera Level,

And as still as possible, and press slightly on the press-button on the side of camera at the front, which releases the shutter and the picture is taken. Replace the slide in the holder; reverse the holder and draw the other slide, and all is ready for the second exposure.



PREMIER, WITH FRONT LOWERED.

View Finder.

As the same view is seen in the View Finder as is reflected on the ground glass, you will observe the Finder at the moment of exposure to see when the object is in range.

Time Exposure.

To make time exposures the Camera should be placed on a Tripod, or other support, as you will be unable to hold it still enough in your hands to avoid a slight blur.

Press downward on the small brass lever on the side of camera, and then by pressing on the press-button the Shutter will be held open; an upward pressure of the lever will close the Shutter.



FOCUSING, FOR TIME EXPOSURE.

If preferred, time exposures may be made with the cap, by lowering the front of Camera on its hinges.

Focusing.

There are three notches for the spring catch of the ground glass frame; one close to the rigid frame for focusing, one nearly an inch further back for Plate Holders and Film Holders, and one still further removed for using the Roll Holder, which is much thicker.

Raise the lid of the Camera, and place the ground glass frame in the notch nearest the rigid frame. Remove the panel from the rear end of Camera, and through the aperture you can see the ground glass while you focus by turning the milled head at the focusing scale.

Speed of Shutter.

The Shutter works quickest when fully wound up, while each succeeding exposure is slower than the preceding one.

If you desire several exposures to be of same rapidity, turn the winding-knob one-half way round after each exposure.

If the Shutter should be fully wound up, and you desire to make a slow exposure, simply work the shutter two or three times before you draw the slide.

Celluloid Films.

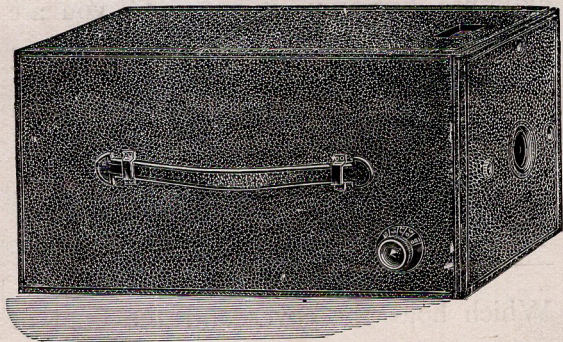
If cut films are used, the manipulation of the Camera is exactly the same as for plates.

Roll of Films.

If the Roll Holder is used, the manipulation is the same, except you do not require to replace the slide after each exposure, but leave it out until you are through for the day, and you will need only turn the key to wind a fresh film in position.

The Catches

Which hold the cover and the front of Camera are covered over with leather, but are easily seen, there being two for the front of Camera and one for the screen.



THE "PREMIER" CAMERA.