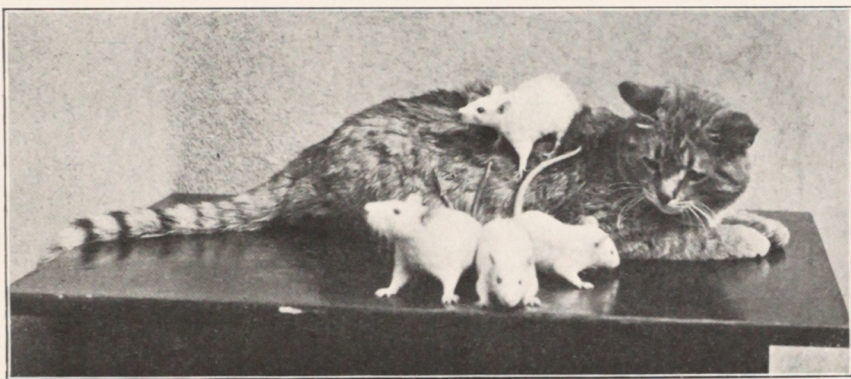


PREMO



PREMO CAMERAS



1908

MANUFACTURED BY
ROCHESTER OPTICAL DIVISION
EASTMAN KODAK COMPANY
ROCHESTER, N. Y.
U. S. A.



PREMO DEVELOPING TANK
For Tank Development of Premo Film Pack. See pages 40-41

"OH FOR A CAMERA"

Who has not heard the phrase an hundred times—aye, and used it, too?

Was it the sudden glimpse of some magnificent bit of landscape; a chance encounter by the wayside; a ludicrous escapade of jolly companionship, that brought the words to your lip? Or say, was it the unconscious grace of two tiny heads in joyous absorption of the pleasures of childhood; or the familiar sight of mother, sitting by the fireside in her low rocker, with the love and contentment of home reflected in her face, that kindled the thought in your heart?

"Oh for a Camera!" The wish is father to the deed.

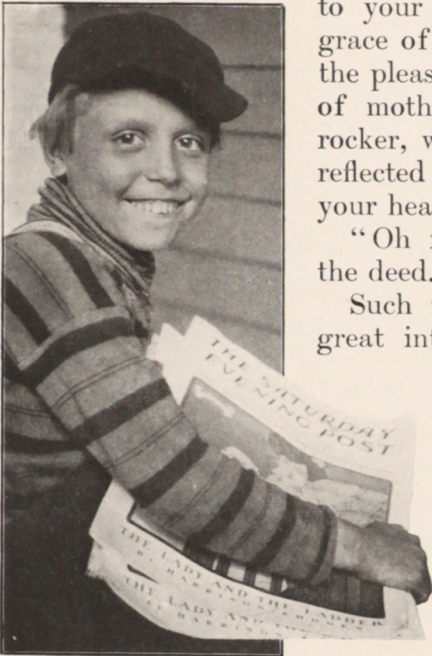
Such thoughts as these are reasons for the great interest in amateur photography, an interest which has been developed from year to year, by continued simplification of the process of making pictures.

Fifteen years ago the camerist was looked upon as something of a faddist—a good deal of a crank; to-day, the man with a camera is omnipresent. He is your next door neighbor. He or she is met with in the uttermost parts of the earth.

The dignified doctor of laws; the child posing his playmates in the streets; the radiant school girl with her dearest friends; the hard-headed business man—thousands of men and women in all walks of life are members of his clan.

In the business world alone the camera occupies a great field. It is indispensable for illustration; it is one of the greatest of selling forces, as exemplified by the modern catalogue; it is actually a necessity in many branches of scientific research. We are interested by pictures secured at the front or amid great dangers by intrepid correspondents; by the countless illustrations of topics of the hour, which fill the literature of the day.

But it is the personal element of our own existence that fascinates us in the real amateur photography. It is in the



everyday life of the home, that the camera finds its real value. It is as the handmaid of that foundation of human sentiment memory that it has endeared itself to the world.

Pictures of those that are dear to us in their natural everyday persons; of baby taking his first steps and his continued progress through the years. Pictures of our annual outings, of trophies of the hunt, of the automobile tour, of the multitudinous phases of our daily lives; these are the ones that overleap mere interest and fasten deep upon the affections.

For just such pictures as these, the Premo Camera is preferred by thousands of amateur photographers, and it is our aim in this catalogue to show you why this is so and why the Premo is the camera for you. And in this connection, we quote just a few of many expressions of appreciation which we have received from friends, from all over the world.

I have used Premos now for about five years and have had three of your different numbers during this time. I wish to express my great satisfaction with your instruments. This last tourist outfit, of course, required to be fitted to my special needs in several directions. It must needs take pictures and not just "snap shots," must be compact, must use my 5 x 7 lens, must, despite its compactness, possess a certain number of the most necessary adjustments. Permit me to say that after looking over the field most searchingly for several months now and comparing the Premo with all the best known makes in point of construction, finish and adaptability to my needs, I selected it from a list of twelve different manufactures.

Though but a business letter, I deem this statement deserved by your company. Thanking you again for the manner in which you filled my order, I am,

Respectfully,

W. M. ATWOOD,
Mount Vernon, Ia.



Have purchased one of your \$5.00 Premo cameras. I have found my camera everything and more than you claim it to be, and when graduated from the "amateur class" I shall certainly purchase the best "Premo" you turn out.

Very truly yours,

LEO J. NEUPERT,
Buffalo, N. Y.

424 Main St.

The Premoette is a little dandy. It was this little instrument that caused me to change my belief that all these little cameras were not much better than toys.

Respectfully,

F. BARTLEMAN,
Detroit, Mich.

205 Lafayette Ave.

To my notion the proof of good films is the large majority of good negatives one gets out of the number exposed. In my experience I have never had so large a proportion of good negatives. While in Venice I do not think I had one single failure.

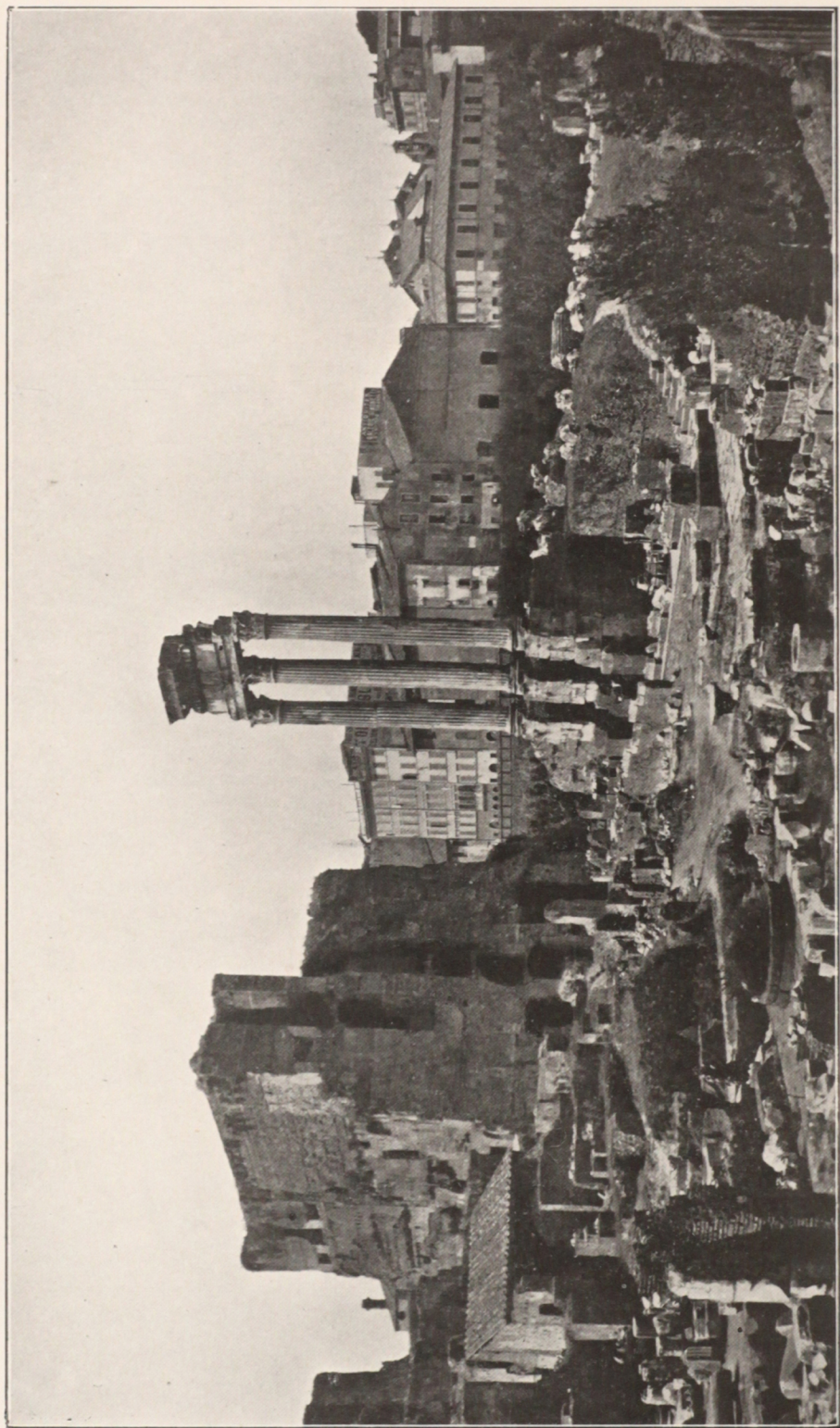
I had with me some American plates, but my best negatives were made on film.

I took a panorama in five negatives, from the Gorner Grat at Zermatt, Switzerland, and all the negatives were fine and my prints make a perfect panorama effect of the mountains from Monte Rosa to the Matterhorn.

JOHN W. HOUSTON,
Municipal Court of Chicago.

This latter gentleman took a Premo Film Pack outfit with him on a recent tour through Europe and secured some of the finest pictures of old world show places, which we have ever seen. With his permission, we reproduce several of these as illustrations in this catalogue.





Premo Film Pack Negative

THE ROMAN FORUM

By Judge J. W. Houston

NEW PREMOS FOR 1908

IN the twenty-five years of our experience as camera manufacturers, the longest of any camera maker, no year has passed without some addition to Premo construction, which has offered an easier way to some branch of photography. This year is no exception. We introduce, for 1908, the Premo Developing Tank and three new Premo cameras—Premo Junior, Premograph No. 2 and a 5 x 7 Film Premo No. 1, besides adding to the equipment of the popular Premoette.

PREMO DEVELOPING TANK—This simple device provides for the development of Premo Film Pack, with the minimum of care and labor and with the assurance of absolute uniformity of results. One or more films can be removed from the Premo Film Pack at any time, and with the Premo Developing Tank any number of films, up to twelve, can be easily developed. (Complete description, pages 40-41.)

PREMO JUNIOR—A two dollar Premo for the little folks, but highly efficient also for the grown-up amateur. A daylight loading Premo Film Pack camera, compact and light, with universal focus lens, for $2\frac{1}{4} \times 3\frac{1}{4}$ pictures. (Description, page 9.) Will be one of the most popular cameras of the year.

PREMOGRAPH No. 2—The simplest and cheapest reflecting camera in existence, fitted with anastigmat or double rectilinear lens. A logical result of the immense popularity of the Premograph and embodying the same simple construction. Has convenient focusing attachment and retarded time arrangement. (See page 18.)

5 x 7 FILM PREMO No. 1—Designed to meet the demand for a moderate priced film camera of efficiency, for 5 x 7 pictures. At once, the lightest, most compact and lowest priced 5 x 7 film camera on the market. (See pages 12-13.)

PREMOETTE WITH DOUBLE LENS—This little instrument has so struck the popular approval for its compactness and convenience of operation, that we have received many requests for Premoette with anastigmat lens. We, therefore, are offering it this year, with double rapid rectilinear lens, also with Bausch & Lomb Tessar lens, one of the very best of the anastigmats.

There is no other camera for $2\frac{1}{4} \times 3\frac{1}{4}$ pictures, on the market, with such high grade optical equipments as this. (See page 11.)

A TALK WITH THE READER

ABOUT FILM PREMOS—Convenience, ease of operation, compactness of form, certainty of results—these are the essential features of all film camera construction.

In purchasing an exclusively film camera, then, that instrument which shall best measure up to these four requirements is the camera which you will logically choose; and just as logically, your choice will be a Film Premo.



Because Film Premos are the easiest to load—Open back, drop Premo Film Pack in place, close back and the camera is loaded in daylight. They are the simplest to operate—Open camera, pull out tab, press the bulb and the picture is made. They are much lighter and smaller than any other instruments.

They permit the removal of one or more films for development at any time. They are being used by thousands of amateurs all over the world, who are making as good pictures as can be seen anywhere. Big claims are easy to make, you will say. We sub-

stantiate ours. We ask nothing better than a comparison of Film Premos and any others, by catalogue or at the dealer's. You'll find that every one of these claims is verified. Just take each point as we have named it and satisfy yourself.

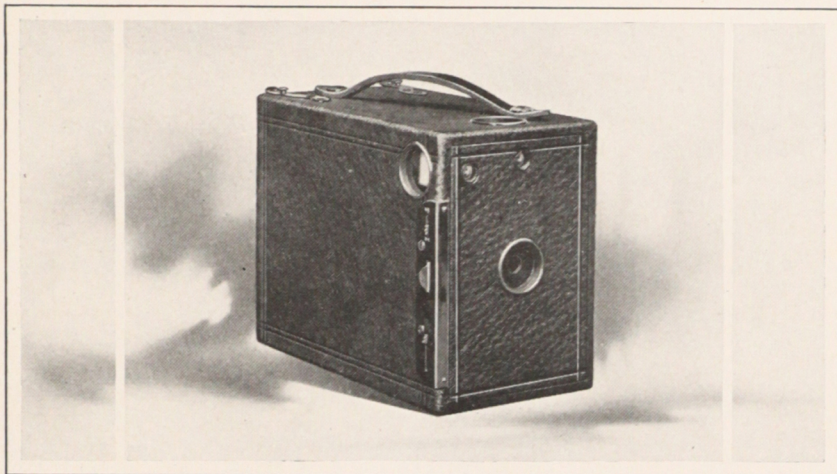
Then, Film Premos being so compact and simple, require less material and adjustment of parts in their construction. Hence, they are furnished at extremely moderate prices. And we use the best of material in their construction. Film Premos are made to last, and in workmanship are second to none.

I have always found your films absolutely reliable in quality and picture taking. . . . In my experience with them, I may say, that I find them so very *fast* that I have not yet been able to take them *too fast* in bright sunlight. . . . I have taken express train running 45 miles an hour, at 4:45 P. M., with films, on a September day, and got a *good negative* at $\frac{1}{100}$ sec. exposure. A field of sheep on the move, with the *back* lens alone at $\frac{1}{80}$ sec. and got a splendid negative.

Cordially yours,

F. P. Lotz, Watervliet, N. Y.

P R E M O J U N I O R



PICTURE making with the Premo Film Pack is so easy, that an inexpensive little film pack camera of the simplest type, for boys and girls, has become a necessity. And the Premo Junior is so easy to work—so moderate in price, that any youngster can have one and can make good pictures with it.

It's a compact little box, but strongly made of seasoned wood, with a view to withstanding the hardest knocks which the young folks are likely to give it. Has automatic shutter for time or snap shot pictures, two finders and two tripod sockets.

As for simplicity, we wish every boy and his parents could know just how easy it is to make good pictures with Premo Junior. To load: Open back, drop Premo Film Pack in place—close the back, and the camera is loaded in daylight. No focusing—just point the camera at any object—press a button and the exposure is made.

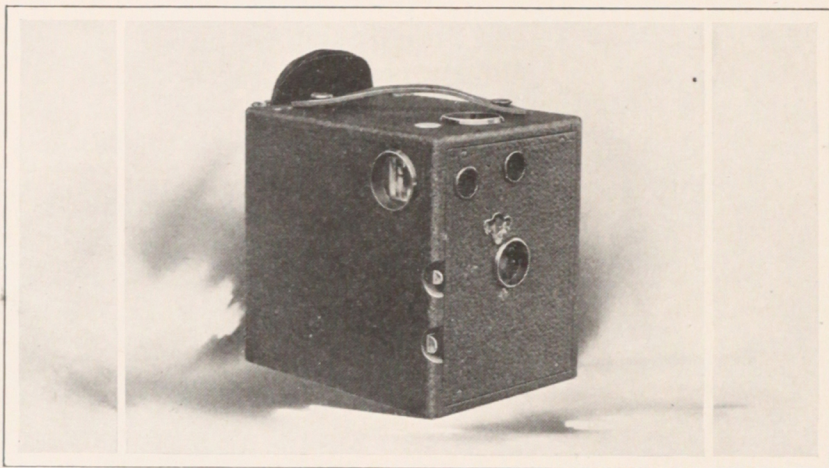
Twelve films in every pack; when one has been exposed, pull out a black paper and all is ready for the next picture.

While Premo Junior is designed primarily for the children, it is not a toy, and in the hands of the average grown-up amateur, will make as fine $2\frac{1}{4} \times 3\frac{1}{4}$ pictures as can be had.

DIMENSIONS— $3\frac{1}{8}$ x $4\frac{1}{2}$ x $5\frac{3}{4}$ inches. WEIGHT—12 ounces.

	PRICE	2¼ x 3¼
Premo Junior - - - - -		\$2 00
Carrying Case - - - - -		75
Premo Film Pack - - - - -		40

BOX FILM PREMO



THE simplest means of picture making is by use of a camera of the box type. There is no focusing or estimation of distances, the camera is always ready and the shutter operates from mere pressing of a button. Hence, these cameras are favorites with beginners in photography and with those amateurs who want good ordinary pictures, with the least expenditure of care and time.

The Box Film Premo, in addition to its simplicity of design, possesses features found in no other camera of this character.

It uses the Premo Film Pack exclusively; loads in daylight, and single exposures may be removed at any time for development in tray or tank.

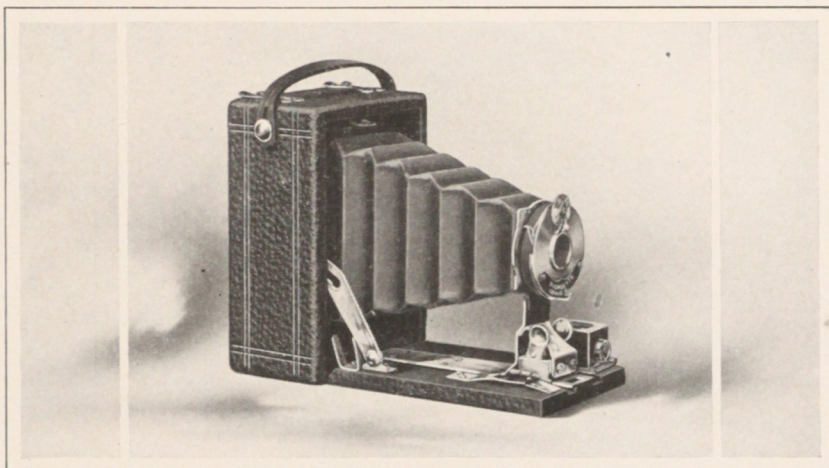
The lens is an excellent single achromatic, always in focus and producing a sharp, clear negative at all times. The shutter works for either time or snap shot exposures and is automatic in action, requiring no setting whatever.

Two brilliant finders and two tripod sockets are provided, adapting it for either vertical or horizontal pictures and the camera has a handsome seal grain covering.

DIMENSIONS— $3\frac{1}{4}$ x $4\frac{1}{4}$, 4 x $5\frac{1}{2}$ x $5\frac{3}{4}$ inches; 4 x 5 , $4\frac{3}{4}$ x $6\frac{1}{4}$ x $6\frac{1}{2}$. WEIGHT— $3\frac{1}{4}$ x $4\frac{1}{4}$, 20 ounces; 4 x 5 , 25 ounces.

	PRICES	$3\frac{1}{4}$ x $4\frac{1}{4}$	4 x 5
Box Film Premo	- - - - -	\$5 00	\$6 50
Carrying Case	- - - - -	1 50	1 75
Film Pack (12 exposures)	- - - - -	70	90

THE PREMOETTE



PREMOETTE is the smallest camera in the world for pictures of practical size—so small that it can be carried unnoticed even in a boy's pocket.

And compactness is not the only reason for its great popularity. It makes really fine $2\frac{1}{4} \times 3\frac{1}{4}$ pictures—pictures as good as will ordinarily be obtained with the largest sizes of amateur cameras—pictures which are of good size for snap shot work and portraiture—of excellent quality for enlargement.

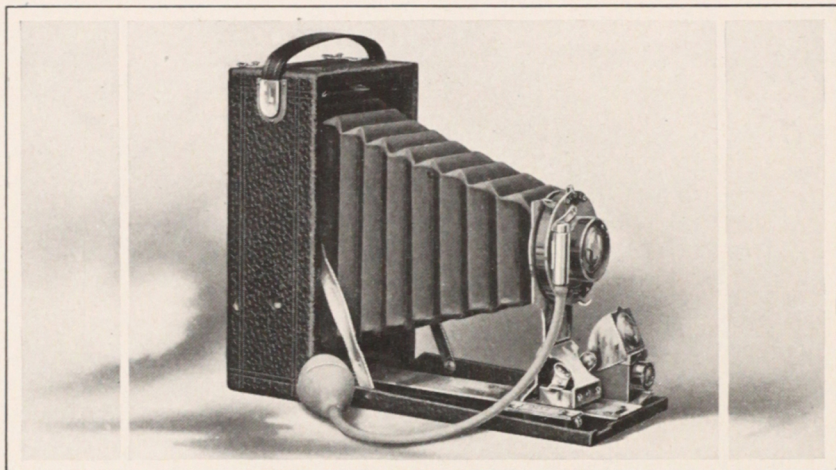
And then, it's so easy to make pictures with Premoette. Loads in daylight like all Film Premos—open back—drop in Premo Film Pack, close back and camera is loaded. To make the exposure, pull out a black paper, press the shutter release and it's completed.

The regular lens is a fine meniscus of practically universal focus, fitted to automatic shutter, with three variations of speed, made especially for Premoette. And, to meet the growing demand for this little model with double lens, we are offering it this year with rapid rectilinear or anastigmat lens.

DIMENSIONS— $1\frac{7}{8} \times 3\frac{3}{16} \times 4\frac{1}{2}$ in. WEIGHT—11 ounces. TRIPOD SOCKET—One. FINDER—Reversible. COVERING—Seal grain.

	PRICE	$2\frac{1}{4} \times 3\frac{1}{4}$
Premoette - - - - -	- - - - -	\$ 5 00
With Single Valve Auto. Shutter and Rapid Rectilinear Lens	- - - - -	9 00
With Double Valve Auto. Shutter and Tessar IIb No. 3 Lens	- - - - -	44 00
Carrying Case - - - - -	- - - - -	75
Film Pack (12 exposures) - - - - -	- - - - -	40

FILM PREMO NO. 1



AS a moderate priced camera for all-around photography, Film Premo No. 1 is absolutely the best proposition in the camera field. We would make this statement stronger if we could. It is not one of those glittering generalities, such as are seen in so many advertisements, but an actual fact which we can and will demonstrate to the open-minded purchaser who is seeking the best possible value for his money.

We ask nothing better than that you will compare this model with any other on the market, keeping in mind the following points, which are the essential features of all camera construction:

SIZE—Film Premos No. 1 are much smaller than any other cameras for pictures of corresponding size.

WEIGHT—Film Premos No. 1 are the lightest cameras on the market.

OPTICAL EQUIPMENT—Film Premos No. 1 are fitted with excellent rapid rectilinear lens made by the Bausch & Lomb Optical Co. They are amply efficient for all ordinary photographic purposes. Shutters are single valve automatic and absolutely reliable. Lenses and shutters of this grade will be found on no other cameras at our prices.

CONVENIENCE—The supreme test of every camera.

Of Loading—Film Premos are loaded in daylight with Premo Film Pack. (See pages 38 and 39.) To load—Open hinged back—drop in Premo Film Pack—close back and the camera is ready. Nothing could be simpler.

Of Exposing—To expose with Film Premos, open the camera—pull out a black paper—press the bulb and the exposure is made. For the next, pull out another paper and press the bulb; so on until the entire pack of twelve is exhausted, when it is removed in daylight and a fresh one substituted.

Of Developing—Film Pack films are developed singly or all together, in our new tank developing device (pages 40 and 41), insuring absolute uniformity of development, certainty of results and the minimum of care and labor.

Or, if preferred, they may be developed in the tray, just as dry plates, for each one is packed separate from the other. Recollect, too, one or more films can be removed at any time for development in either tank or tray—a unique and very desirable feature—and this without injury to the films which are as yet unexposed.

These are the facts upon which we base our claim for Film Premo No. 1, facts which you can easily verify at the dealer's.

As for finish and workmanship, these cameras leave nothing to be desired. They are made of seasoned wood, with front and back panel of aluminum. Have reversible brilliant finders, focusing scales and coverings of fine seal grain leather.

The popularity of the three smaller sizes has created a large demand for a camera of this character making 5 x 7 pictures, and we offer this year the 5 x 7 Film Premo No. 1. Those amateurs who prefer larger size pictures, will find this an especially attractive proposition, both as regards its very moderate price and its remarkable compactness as compared with any other 5 x 7 camera in existence.

It differs slightly from the smaller sizes, in that it has a specially constructed focusing lever, by means of which the camera can be focused for any distance in an instant.

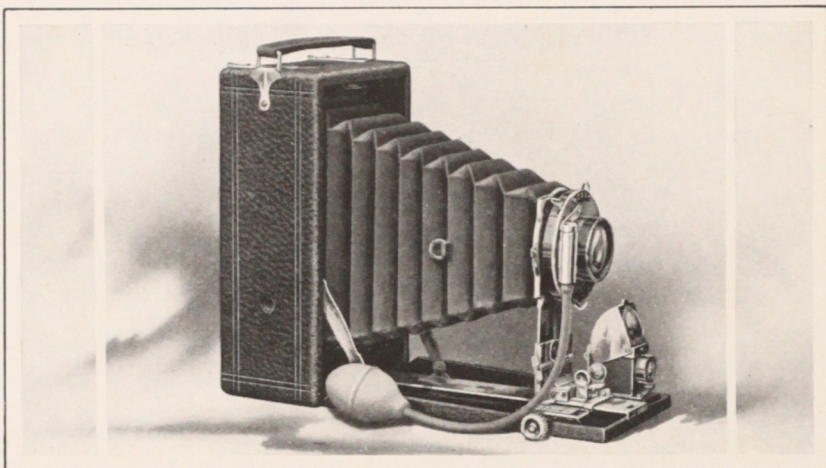
DIMENSIONS— $3\frac{3}{4} \times 4\frac{1}{4}$, $2\frac{1}{8} \times 4 \times 5\frac{1}{2}$ in.; $3\frac{3}{4} \times 5\frac{1}{2}$, $2\frac{1}{4} \times 4 \times 6\frac{3}{4}$ in.; 4×5 , $2\frac{1}{4} \times 4\frac{3}{4} \times 6$ in.; 5×7 , $2\frac{1}{2} \times 5\frac{3}{4} \times 8\frac{1}{8}$ in. WEIGHT— $3\frac{3}{4} \times 4\frac{1}{4}$, 18 ounces; $3\frac{3}{4} \times 5\frac{1}{2}$, 20 ounces; 4×5 , 20 ounces; 5×7 , 46 ounces. TRIPOD SOCKETS—Two. FINDER—Reversible brilliant.

PRICES

		$3\frac{3}{4} \times 4\frac{1}{4}$	$3\frac{3}{4} \times 5\frac{1}{2}$	4×5	5×7
Film Premo No. 1	- - - -	\$10 00	\$12 50	\$12 50	\$20 00
Carrying Case	- - - -	1 50	1 75	1 75	2 50
Film Pack (12 exposures)	- - - -	70	80	90	1 60

5 x 7 size is furnished with Planatograph lens and double valve automatic shutter for \$5.00 extra.

FILM PREMNO NO. 3



ALL that we have just said of Film Premno No. 1, as regards weight, compactness and convenience, is equally true of Film Premno No. 3. This fine model—the highest type of film cameras—is made along the same general lines as Film Premno No. 1, but incorporates special additional features which will appeal to him who wants the most complete film camera that money can buy.

A rack and pinion for quick and accurate focusing is supplied, a rising and falling front for decreasing or augmenting foreground, and the construction of the instrument permits the fitting of all standard anastigmat lenses with Volute or double valve automatic shutter. The box of this camera is made of thoroughly seasoned ebonized wood, the front bed and back panel of aluminum and all metal parts are highly nicked.

Compare the advantages of this model and its prices, with any equipment, with those of any other film cameras in existence.

DIMENSIONS— $3\frac{1}{4} \times 4\frac{1}{4}$, $2\frac{1}{4} \times 4 \times 5\frac{1}{2}$; $3\frac{1}{4} \times 5\frac{1}{2}$, $2\frac{3}{8} \times 4 \times 6\frac{3}{4}$; 4×5 , $2\frac{3}{8} \times 4\frac{3}{4} \times 6\frac{1}{8}$. WEIGHT— $3\frac{1}{4} \times 4\frac{1}{4}$, 24 ounces; $3\frac{1}{4} \times 5\frac{1}{2}$, 26 ounces; 4×5 , 26 ounces. TRIPOD SOCKETS—Two. FINDER—Reversible hooded brilliant.

PRICES

	$3\frac{1}{4} \times 4\frac{1}{4}$	$3\frac{1}{4} \times 5\frac{1}{2}$	4×5
Film Premno No. 3 with S. V. Auto. and R. R. Lens	\$16 00	\$18 00	\$18 00
With Planatograph Lens and Automatic Shutter	21 00	23 00	23 00
With Zeiss Tessar IIb Lens and Automatic Shutter	47 20	55 95	55 95
With Zeiss Tessar IIb Lens and Volute Shutter	61 50	70 25	70 25
Carrying Case	1 50	1 75	1 75
Film Pack (12 exposures)	70	80	90

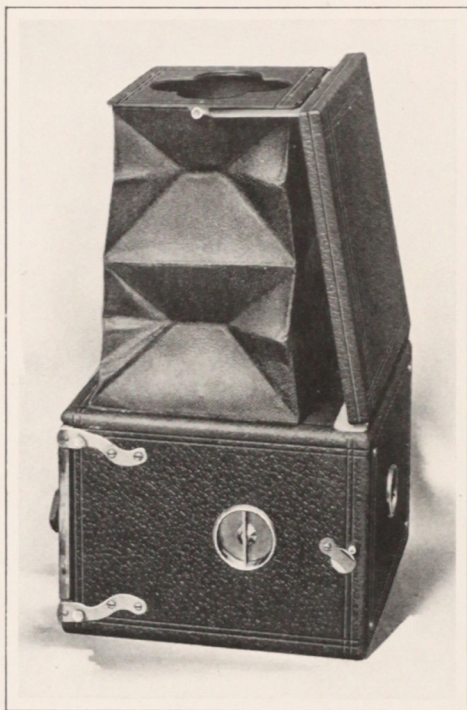


CANAL DEI GRECI AT VENICE

Premo Film Pack Negative

Judge J. W. Houston, Chicago, Ill.

THE PREMAGRAPH



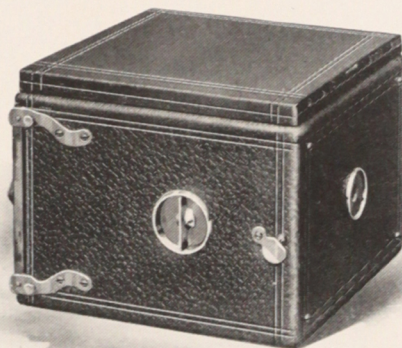
OUR 1907 catalogue contained the first announcement of the Premograph. Within ten days after distribution of those catalogues, we had orders in hand for all the Premographs then in process of construction; in fact, orders from all over the country came to us so fast that, throughout the summer, we were weeks behind in making deliveries. We cite the above as a striking evidence of the place in the camera world, which this model has filled. For the Premograph is an entirely new idea in camera construction.

It offers every amateur photographer the advantages of reflecting construction at a fractional cost of other cameras of this type which are sold at prices which the average amateur does not care to pay. And it offers these advantages in so simple a form, that a child can easily operate the Premograph. The prime feature of any reflecting camera is that it permits the operator to keep an image of the subject always in view, in the exact size and position which it will assume in the picture.

With the Premograph this is an easy matter. Looking through the hood, the operator sees an image of the subject, right side up and always in focus. He can watch it up to the very instant of exposure, when the turn of a key assures him a picture of the subject, just as he last saw it through the hood.

The Premograph is as compact and easy to carry as any ordinary $3\frac{1}{4} \times 4\frac{1}{4}$ box camera, but is fitted with a mirror, set at an angle of 45 degrees, which deflects the rays of the image coming through the lens, to a ground glass fitted in the top of

the box. This glass is the exact size of the $3\frac{1}{4} \times 4\frac{1}{4}$ picture for which the camera is intended and is enclosed by a frame to which is attached the protecting hood. In making an instantaneous or snap shot exposure, only three motions are necessary. One has but to touch a small lever, which automatically throws up the hood, set the mirror by turning the key in the side of the box (when the image may be viewed on the ground glass through this hood, right side up, just as it will appear in the picture), and make the exposure at the proper moment, by reversing the key, which releases the mirror and at the same time operates the shutter. For time exposure, procedure is as simple. The small metal keeper at the side of the key is turned so as to release a tiny nicked button; the mirror is set in the same manner; the position of the subject determined on the ground glass and the exposure key reversed, which releases the mirror and opens the shutter, but the shutter now remains open until the time of the exposure elapses, when a pressure of the tiny button, mentioned above, closes it, and the exposure is completed.



There is no complex mechanism to get out of order and the camera is loaded in daylight with Premo Film Pack.

The various uses of the Premograph are well nigh innumerable. It is especially desirable in portraiture, for the various expressions of the face can be watched on the ground glass and the picture made at the most favorable moment. For ordinary instantaneous pictures, street scenes, etc., the camera will be found equally efficient. There is no question of imperfect register or improper estimation of distance. The operator is assured of the result just as he sees it on his ground glass.

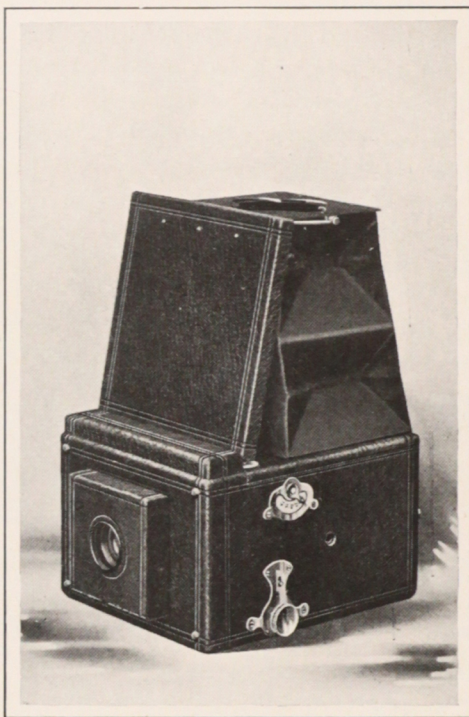
DIMENSIONS— $4\frac{3}{8} \times 5\frac{1}{2} \times 5\frac{1}{2}$. WEIGHT—29 ounces. LENS—Best single achromatic obtainable.

PRICE										
Premograph	-	-	-	-	-	-	-	-	-	$3\frac{3}{4} \times 4\frac{3}{4}$ \$10 00
Film Pack (12 exposures)	-	-	-	-	-	-	-	-	-	70
Carrying Case	-	-	-	-	-	-	-	-	-	1 75

PREMOGRAPH NO. 2

THE success of the Premograph model has brought us many requests for a focusing camera of the same character, adapted for a wider range of work than is the regular Premograph with single lens. Premograph No. 2 will meet fully all such requirements.

The operation of hood, shutter and mirror is exactly the same as that of Premograph just described, with one additional feature. Besides instantaneous and time exposures, the shutter works for retarded speeds of from $\frac{1}{50}$ to 1 second. The lens is protected from



dust or possible injury, by an ingenious lens cap, which opens automatically the instant the lens is racked out and closes when racked back again. The pinion nut for focusing is flush with the bed, when not in use. When required, slight pressure on a small button releases same and it springs into convenient position.

Premograph No. 2 is unique in the reflecting camera field. It is furnished with ordinary or anastigmat lens, at remarkably low prices; shutter operation is simplicity itself; loads in daylight with Premo Film Pack. It is the lightest and most compact of reflecting cameras. And yet, excepting for very high speed photography, it offers all the advantages of any reflecting type.

DIMENSIONS— $4\frac{1}{2}$ x $5\frac{5}{8}$ x $6\frac{5}{8}$. WEIGHT—44 ounces.

	PRICES	$3\frac{3}{4}$ x $4\frac{1}{4}$
Premograph No. 2 with Rapid Rectilinear Lens	- - -	\$20 00
With Zeiss Tessar IIb No. 4 Lens	- - -	50 00
With Cooke Series III No. $3\frac{1}{2}$ D Lens	- - -	54 00
Carrying Case	- - -	2 50
Film Pack (12 exposures)	- - -	70

ABOUT PREMO PLATE CAMERAS

GROUND glass focusing, the prime feature of every plate camera, and the use of plates or films with equal facility,—that's what every commonly called Premo Plate camera offers you.

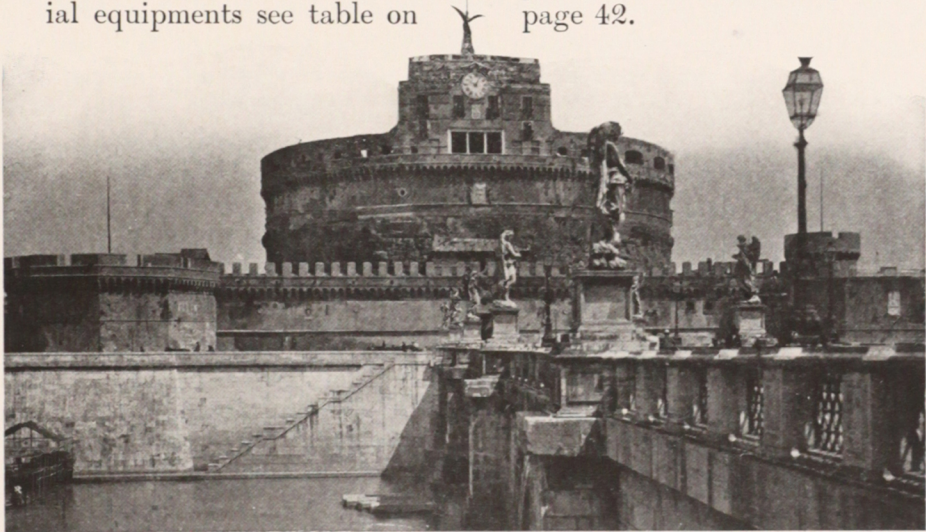
Thus, in purchasing a Premo Plate camera, one has the advantage of using the cheaper plates for pictures around the house and under all conditions, when bulk and weight do not count.

On the other hand, at vacation time, when traveling and on other occasions, when convenience and light weight are imperative, films can be as easily employed. And when films are used, they are loaded in daylight by means of the Premo Film Pack adapter, each subject may be sharply focused on the ground glass just as though plates were being used, and one or more films may be removed at any time for development by tray or tank system, as preferred. There's value for you.

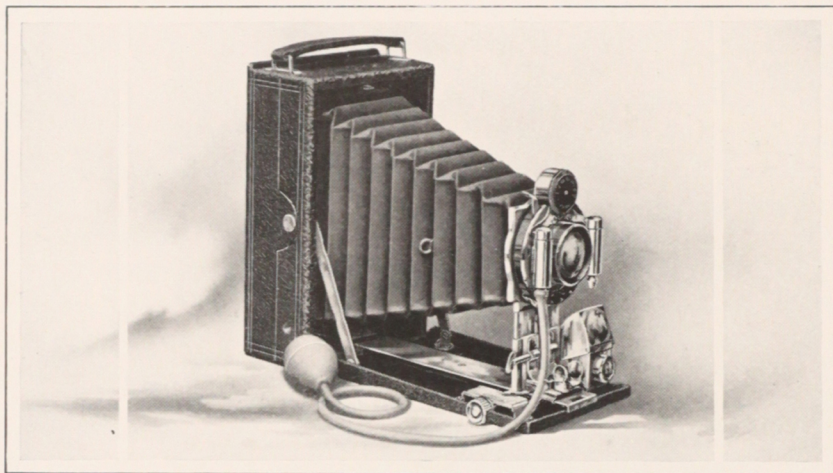
And although these cameras are constructed with special reference to the needs of the amateur, among them will be found Premos suited for the more serious side of photography.

Here are cameras with a variety of special adjustments, constructed to meet the increasing demand for Premos for business purposes—cameras adapted to the needs of the advertiser, the scientist, the horticulturist, the journalist; instruments of exceptional value in securing results for reproduction or half tone requirements. Many standard anastigmat lenses. For special equipments see table on

permit the use of all stand-prices with many such special page 42.



FILMPLATE PREMO



THE exceptional advantages of this model have made it, in the two years since its introduction, the most popular of all cameras of its class.

As light and compact as an ordinary film camera, it uses films or plates with equal facility. For plates, loads with regular Premo double plate holder. For films, loads in daylight with Premo Film Pack Adapter, in the same simple manner.

Either plate holder or film pack adapter can be removed at any time for sharp focusing on ground glass.

When films are used, the Filmplate Premo, therefore, combines the advantages of ground glass focusing with daylight loading, tank development and other film conveniences. And all this at a moderate price without increasing weight or bulk, or the use of special adjustment of any kind.

As for the character of work which this Premo will turn out, it is necessary only to glance at its equipment.

Is fitted with automatic shutter and Planatograph or anastigmat lens. Has rack and pinion for fine focusing, rising and falling front, and focusing scale with universal stop for snap shot work.

The front standard is extremely rigid, being made entirely of metal—an assurance that there is no possibility of leaning or bending—so that the lens is always in perfect register with the focal plane, producing a perfect picture at all times. Particular attention is called to the special clamp supplied, which

automatically fastens the standard to the bed wherever set, so there is no possibility of slipping forward or backward.

A specially constructed spring actuated back, found only on this camera, is a material saving in bulk. It is extended only when the film pack adapter or plate holder is in use. As soon as either is removed the back snaps into place and the camera assumes the appearance and size of the ordinary Film Premos.

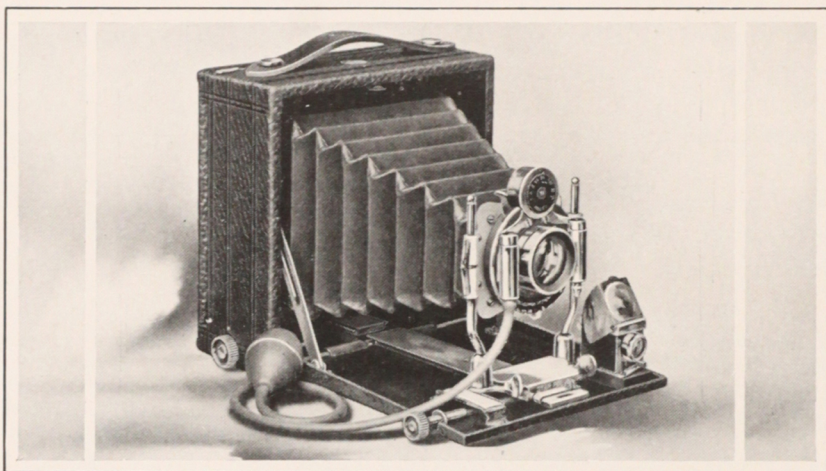
Metal parts are handsomely nickeled, covering is of fine seal grain leather, and the general appearance of the camera is most attractive. Price includes Film Pack Adapter and plate holder.

Box—Well seasoned mahogany. COVERING—Best quality leather of beautiful grain. BED—Aluminum. Rack and pinion for fine focusing. BACK—Receding spring actuated of new design. FRONT—Rising and falling, actuated by rack and pinion. FINDER—Reversible hooded brilliant. TRIPOD SOCKETS—Two. LENS—Planatograph. See page 55. SHUTTER—Double Valve Automatic. See page 52. BELLOWS—Red Morocco leather; draw $3\frac{1}{4} \times 4\frac{1}{4}$, $7\frac{3}{4}$ in.; $3\frac{1}{4} \times 5\frac{1}{2}$, 9 in.; 4×5 , $8\frac{1}{2}$ in. DIMENSIONS— $3\frac{1}{4} \times 4\frac{1}{4}$, $2 \times 4\frac{1}{8} \times 5\frac{3}{8}$ in.; $3\frac{1}{4} \times 5\frac{1}{2}$, $2 \times 4\frac{1}{8} \times 6\frac{5}{8}$ in.; 4×5 , $2\frac{1}{8} \times 4\frac{7}{8} \times 6\frac{1}{8}$ in. WEIGHT— $3\frac{1}{4} \times 4\frac{1}{4}$, 26 ozs.; $3\frac{1}{4} \times 5\frac{1}{2}$, 30 ozs.; 4×5 , $28\frac{1}{2}$ ozs.

	PRICES	$3\frac{1}{4} \times 4\frac{1}{4}$	$3\frac{1}{4} \times 5\frac{1}{2}$	4×5
Filmplate Premo Camera - - -	- - -	\$24 00	\$26 50	\$26 50
With B. & L.-Zeiss Tessar IIb Lens and Auto. - - -	- - -	55 20	64 45	64 45
With B. & L.-Zeiss Tessar IIb Lens and Volute - - -	- - -	69 50	78 75	78 75
Carrying Case - - -	- - -	2 00	2 25	2 25
Film Pack (12 exposures) - - -	- - -	70	80	90



STAR PREMIO



STAR Premio, made for the two smaller sizes of amateur pictures, possesses distinctive features which fit it for a broad scope of work in amateur photography. Features of considerable importance to the painstaking amateur and which are usually found only in larger and more expensive instruments.

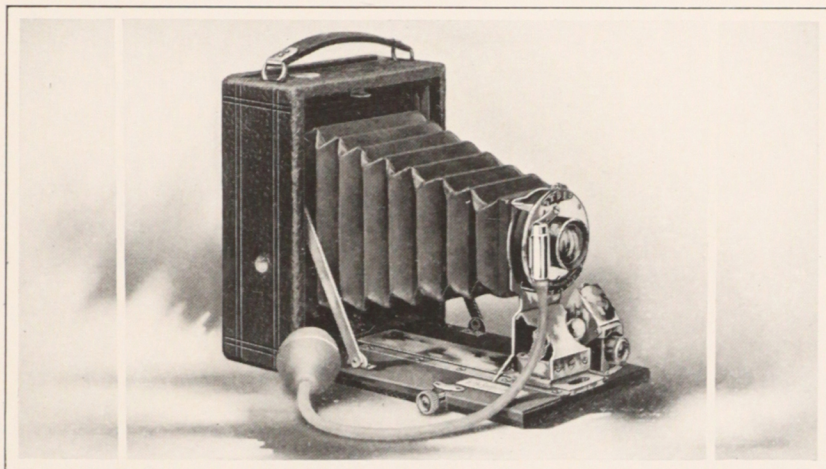
Thus, for decreasing unsightly foreground or the photographing of high structures, Star Premio is provided with a pinion actuated swing frame, securing such pictures without the slightest distortion or leaning appearance. A rising and falling front supplements the work of the swing, and the back is reversible.

Star Premio takes films or plates and has rack and pinion for sharp focusing, also focusing scale and reversible brilliant finder for use when the ground glass is not desirable. With all these advantages, the camera is very light and compact.

Box—Well seasoned mahogany. COVERING—Fine grain leather. BED—Aluminum. TRIPOD SOCKETS—Two. LENS—Planatograph. See page 55. SHUTTER—Double Valve Automatic. See page 52. BELLOWS—Red Morocco leather; draw $3\frac{1}{4} \times 4\frac{1}{4}$, $6\frac{7}{8}$ in.; 4×5 , $7\frac{3}{4}$ in. DIMENSIONS— $3\frac{1}{4} \times 4\frac{1}{4}$, $2\frac{1}{4} \times 5\frac{1}{4} \times 5\frac{1}{2}$ in.; 4×5 , $2\frac{1}{2} \times 6 \times 6$ in. WEIGHT— $3\frac{1}{4} \times 4\frac{1}{4}$, 33 ozs.; 4×5 , 37 ozs.

	PRICES	$3\frac{1}{4} \times 4\frac{1}{4}$	4×5
Star Premio Complete	- - - - -	\$22 50	\$25 00
With B. & L.-Zeiss Tessar IIb Lens in Auto. Shutter	- - - - -	53 70	62 95
With B. & L.-Zeiss Tessar IIb Lens in Volute Shutter	- - - - -	68 00	77 25
Film Pack Adapter	- - - - -	1 00	1 50
Film Pack (12 exposures)	- - - - -	70	90

POCKET PREMO C



HERE'S an inexpensive pocket camera of unusual efficiency, taking films or plates with equal facility. It's a real pocket camera, too. So small that it may be carried readily in any ordinary coat pocket, and the advantages which it offers to one seeking a reliable, moderate priced instrument for $3\frac{1}{4} \times 4\frac{1}{4}$ pictures, are worthy of special attention.

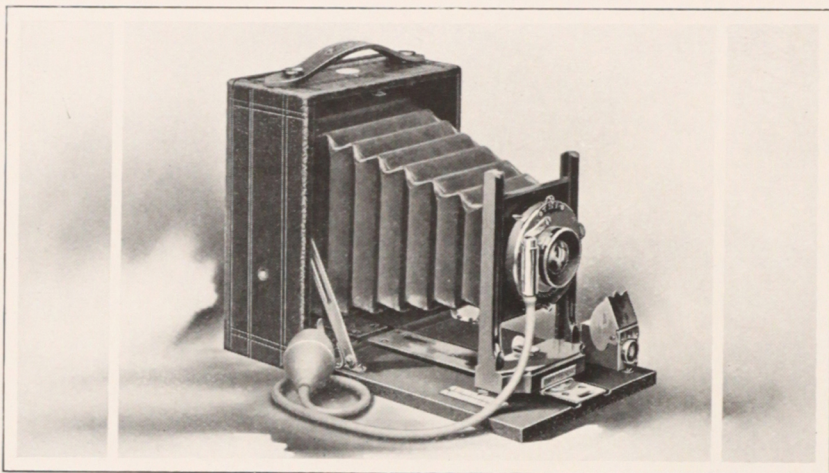
Pocket Premo C has a ground glass on which every subject can be sharply focused, whether films or plates are used. When films are to be used, they are loaded in daylight, and developed singly or altogether, by tray or tank system, as preferred.

For focusing, a rack and pinion is provided, also reversible brilliant finder and an accurate focusing scale with universal stop for use in instantaneous or other work, when the ground glass is not available. The lens of this model is a double rapid rectilinear of good quality, fitted to our single valve automatic shutter. Metal parts are nicked, the covering is selected seal grain leather and price includes one double plate holder.

Box—Mahogany, leather covered. FINDER—Reversible, hooded brilliant. TRIPOD SOCKETS—Two. BELLOWS—Red leather, draw $7\frac{1}{4}$ in. DIMENSIONS— $2 \times 4 \times 5\frac{1}{4}$ in. WEIGHT—12 ounces.

	PRICE	$3\frac{1}{4} \times 4\frac{1}{4}$
Pocket Premo C	- - - - -	\$12 00
Double Plate Holder	- - - - -	80
Black Sole Leather Carrying Case	- - - - -	1 50
Premo Film Pack Adapter	- - - - -	1 00
Premo Film Pack (12 exposures)	- - - - -	70

PONY PREMO NO. 1



THIS camera, the first of the Pony Premo series, is designed more particularly for beginners and those who wish a good camera for ordinary pictures, at a nominal price. Made primarily as a plate camera, the Premo Film Pack system has practically doubled its value to the owner, for a Film Pack Adapter will convert it into a daylight loading film camera, combining the advantages of ground glass focusing, with tank development and other film conveniences. When used with plates, it takes the regular double Premo plate holder.

The lens is our double rapid rectilinear, fitted to single valve automatic shutter. Focusing scale and finder are supplied.

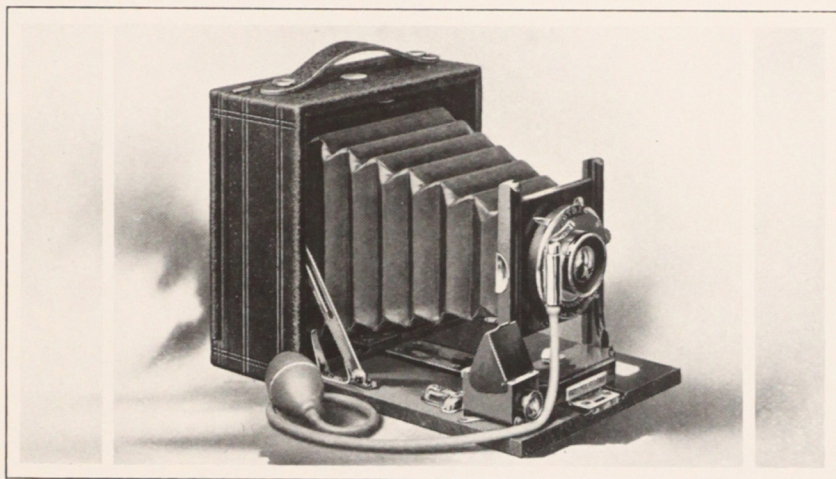
There are no complicated parts whatever. Construction is so simple, that anybody can make pictures on either films or plates with Pony Premo No. 1.

Metal parts are highly nicked, covering is seal grain and price includes carrying case and one double plate holder.

Box—Mahogany, leather covered. BACK—Receding spring actuated. FRONT—Rising and falling. FINDER—Reversible, hooded brilliant. TRIPOD SOCKETS—Two. BELLOWS—Red leather; draw $7\frac{1}{8}$ in. LENS—Rapid Rectilinear. SHUTTER—Single Valve Automatic. See page 53. DIMENSIONS— $2\frac{1}{2}$ x $5\frac{1}{4}$ x $6\frac{1}{4}$ inches. WEIGHT—24 ounces.

	PRICE	4 x 5
Pony Premo No. 1	- - - - -	\$12 00
Premo Film Pack Adapter	- - - - -	1 50
Premo Film Pack (12 exposures)	- - - - -	90

PONY PREMO NO. 2



WITH single valve automatic shutter and same general characteristics as the Pony Premo No. 1, this camera has the additional advantage of reversible back—an important consideration to many amateurs. The back can be instantly and easily reversed for horizontal or vertical pictures, so that it is not necessary to change the position of the camera itself, for either style of pictures.

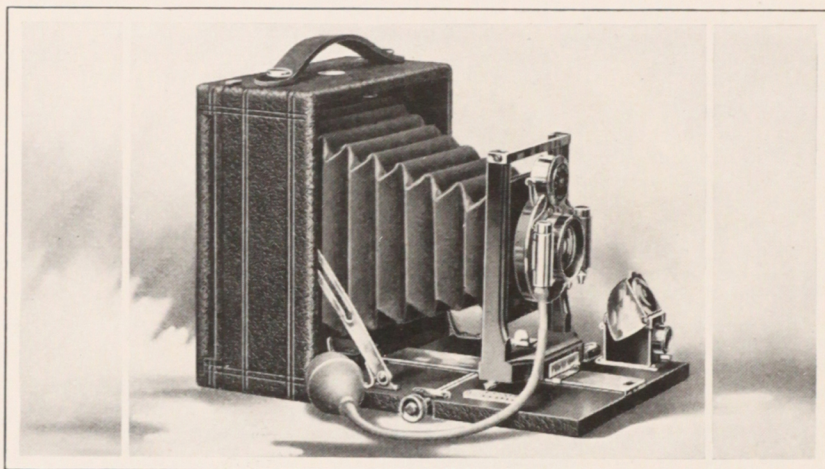
An accurate spirit level is also fitted to the bed and as the Film Pack Adapter may be readily used, this instrument has the double value of all Pony Premo cameras. Metal parts are nicked; two tripod sockets and reversible, brilliant finder are supplied. Pony Premo No. 2 is carefully constructed throughout and is a thoroughly efficient outfit for all ordinary amateur work.

Box—Mahogany, covered with fine grain leather. BACK—Reversible. FRONT—Rising and falling. FINDER—Hooded brilliant, reversible. TRIPOD SOCKET—One. LENS—Rapid Rectilinear. SHUTTER—Single Valve Automatic. See page 53. CARRYING CASE—Imitation leather. BELLOWS—Red leather; draw 4 x 5, 6 $\frac{7}{8}$ in.; 5 x 7, 9 $\frac{1}{2}$ in. DIMENSIONS—4 x 5, 2 $\frac{1}{2}$ x 6 x 6 in.; 5 x 7, 3 $\frac{1}{4}$ x 8 $\frac{1}{4}$ in. WEIGHT—4 x 5, 28 ozs.; 5 x 7, 50 ozs.

PRICES

	4 x 5	5 x 7
Pony Premo No. 2	\$14 00	\$18 50
Premo Film Pack Adapter	1 50	2 50
Film Pack (12 exposures)	90	1 60

PONY PREMO NO. 3



AMONG more ambitious amateurs Pony Premo No. 3 is the most popular camera ever offered at equal prices.

It has all the advantages of the two preceding models, with the addition of rack and pinion focusing attachment, longer bellows draw and double valve automatic shutter. These advantages, combined with the fact that plates or films may be used with equal facility, make the instrument a very desirable one for those amateurs wishing a camera with broad scope of work at a moderate price.

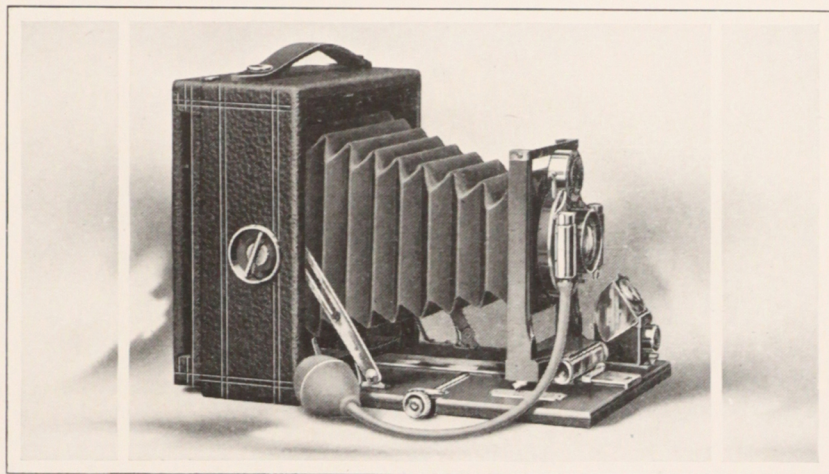
Pony Premo No. 3 is handsomely finished, the shutters and all metal parts are nickeled, the covering is grain leather, wood parts are thoroughly seasoned mahogany and the general appearance of the instrument is most striking.

Box—Mahogany, leather covered. BED—Mahogany; rack and pinion attachment for fine focusing. BACK—Reversible. FRONT—Rising and falling. FINDER—Hooded brilliant, reversible. TRIPOD SOCKET—One. LENS—Rapid Rectilinear. SHUTTER—Double Valve Automatic. See page 52. CARRYING CASE—Sole leather. BELLOWS—Red leather; draw 4 x 5, 8 $\frac{1}{4}$ in.; 5 x 7, 12 $\frac{3}{8}$ in. DIMENSIONS—4 x 5, 2 $\frac{1}{2}$ x 6 x 6 in.; 5 x 7, 3 $\frac{1}{4}$ x 8 $\frac{1}{4}$ x 8 $\frac{1}{4}$ in. WEIGHT—4 x 5, 33 ozs.; 5 x 7, 56 ozs.

PRICES

		4 x 5	5 x 7
Pony Premo No. 3	- - - - -	\$20 00	\$26 00
Premo Film Pack Adapter	- - - - -	1 50	2 50
Film Pack (12 exposures)	- - - - -	90	1 60

PONY PREMO NO. 4



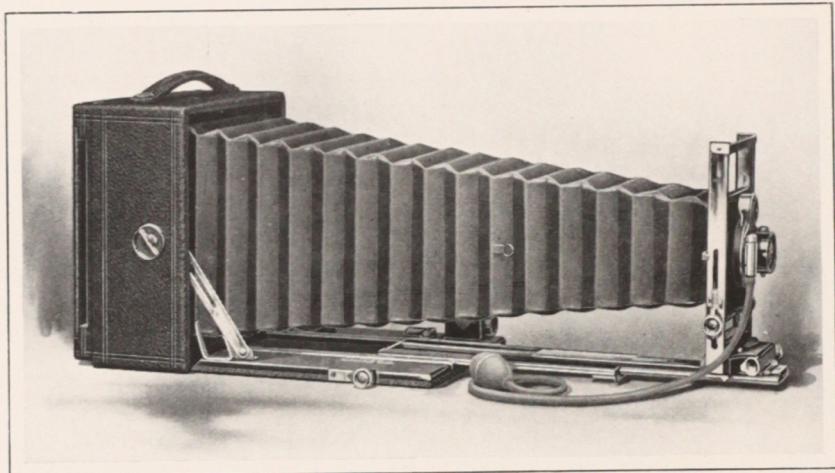
DESIGNED for a wider range of work than its three predecessors in this series, Pony Premo No. 4 has all their good points, with additional equipment of swing back, Planatograph lens and new automatic standard clamp. The swing back provides for the decreasing of unsightly foreground, the photographing of high structures and other such work, in which an ordinary camera would have to be tipped. For with Pony Premo No. 4, the back is easily swung to any reasonable angle and the pictures easily secured without the slightest distortion or leaning appearance.

The lens is the best obtainable outside of the anastigmats and the shutter is the B. & L. double valve automatic. Films or plates may be used in this instrument with equal facility.

Box—Mahogany, leather covered. BED—Mahogany; rack and pinion for fine focusing. BACK—Reversible. SWING—Vertical. FRONT—Rising and falling. FINDER—Hooded brilliant, reversible. TRIPOD SOCKET—One. LENS—Planatograph. See page 55. SHUTTER—Double Valve Automatic. CARRYING CASE—Sole leather. BELLOWS—Red leather; draw 4 x 5, 8½ in.; 5 x 7, 12⅝ in. DIMENSIONS—4 x 5, 2¾ x 6 x 6 in.; 5 x 7, 3¼ x 8¼ x 8¼ in. WEIGHT—4 x 5, 36 ozs.; 5 x 7, 60 ozs.

	PRICES				4 x 5	5 x 7
Pony Premo No. 4, complete	-	-	-	-	\$24 00	\$32 00
With B. & L.-Zeiss Tessar IIb in Auto.	-	-	-	-	61 95	78 30
With B. & L.-Zeiss Tessar IIb in Volute	-	-	-	-	76 25	94 60
Film Pack Adapter	-	-	-	-	1 50	2 50
Film Pack (12 exposures)	-	-	-	-	90	1 60

PONY PREMO NO. 6



PREMO superiority is well exemplified in this admirable camera. With its triple extension bed, great focal capacity and variety of special patented adjustments, it is an instrument peculiarly suited for the work of the scientist or of the advanced amateur. At the same time these special features are added in such a manner as to increase but little weight and bulk, so that Pony Premo No. 6 is one of the most desirable outfits for general amateur use ever manufactured.

The regular lens—our Planatograph—is of such quality that either front or back combination may be used singly for telephoto work, and the bellows is of sufficient length to accommodate high power telephoto attachments of several magnifications. Furthermore, the instrument will be found efficient for copying or other work necessitating long bellows draw. Rings are attached to the bellows so that the same can be drawn up taut to the front when short focus lenses are used, thus obviating any possibility of the bellows folds obstructing the rays of the lens.

The standard is composed largely of metal, and the rising and falling front is actuated by pinion device, which is so constructed that it will lock firmly at any point, affording a safe support for the heaviest lenses. The lens board is firmly fastened to the standard automatically, but is easily removable at any time.

Although the bed is triple extension, it is actuated by but one pinion, which is also provided with clever locking device, per-

mitting the extensions to be locked firmly at any point. The standard clamp is automatic, fastening the standard securely to the bed wherever released, and a universal bed stop is supplied so that the lens may be brought to universal focus instantly.

The swing back is pivoted at the center and operated entirely from the outside. An accurate spirit level is supplied and the camera is finished in the most careful manner.

The shutter and all metal parts are highly nickeled. Wood is thoroughly seasoned hand polished mahogany, and the covering is a genuine seal grain leather.

List price includes one plate holder and carrying case, which is of the best sole leather, lined with red plush and having separate compartments for camera and plate holders.

To the person requiring a camera for the most exacting scientific purpose as well as to the advanced amateur who wishes a compact, light outfit, but with great capabilities, we thoroughly recommend Pony Premo No. 6.

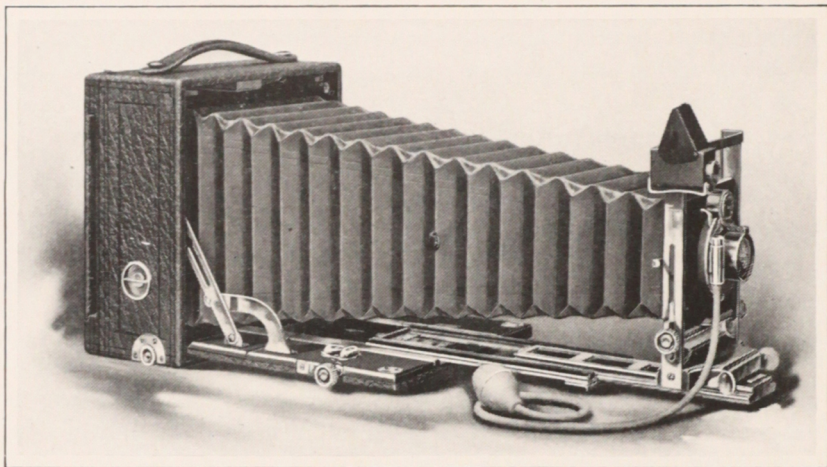
Also it should be remembered by one purchasing a camera for any such special purposes or for general amateur photography that this instrument, with its thorough equipment, in 4 x 5 and 5 x 7 sizes, can be instantly converted into a daylight loading film camera for use at vacation time or when traveling. One needs only secure a Premo Film Pack Adapter and he can load films in the camera as easily as plates, focus on the ground glass between each exposure and remove his films singly or altogether for tray or tank development as preferred.

Box—Mahogany, covered with seal grain leather. BED—Triple extension; rack and pinion actuated. BACK—Reversible. SWING—Vertical. FRONT—Rising and falling; rack and pinion actuated. LENS BOARD—Removable; size, 4 x 5, 2 $\frac{5}{8}$ x 2 $\frac{5}{8}$ in.; 5 x 7, 3 $\frac{1}{2}$ x 3 $\frac{1}{2}$ in.; 6 $\frac{1}{2}$ x 8 $\frac{1}{2}$, 4 $\frac{1}{2}$ x 4 $\frac{1}{2}$ in. FINDER—Hooded brilliant, reversible. TRIPOD SOCKETS—Two. CASE—Sole leather, plush lined. LENS—Planatograph. See page 55. SHUTTER—Double Valve Automatic. See page 52. BELLows—Red leather; draw 4 x 5, 14 $\frac{3}{8}$ in.; 5 x 7, 19 $\frac{1}{2}$ in.; 6 $\frac{1}{2}$ x 8 $\frac{1}{2}$, 24 in. DIMENSIONS—4 x 5, 3 $\frac{1}{2}$ x 6 x 6 in.; 5 x 7, 4 x 8 $\frac{1}{4}$ x 8 $\frac{1}{4}$ in.; 6 $\frac{1}{2}$ x 8 $\frac{1}{2}$, 5 x 10 x 10 in. WEIGHT—4 x 5, 3 $\frac{1}{4}$ lbs.; 5 x 7, 5 $\frac{1}{4}$ lbs.; 6 $\frac{1}{2}$ x 8 $\frac{1}{2}$, 8 $\frac{1}{2}$ lbs.

PRICE

	4 x 5	5 x 7	6 $\frac{1}{2}$ x 8 $\frac{1}{2}$
Pony Premo No. 6, complete	\$ 37 00	\$ 47 00	\$ 62 00
With B. & L.-Zeiss Tessar IIb in Auto.	74 95	93 30	135 40
With B. & L.-Zeiss Tessar IIb in Volute	89 25	109 60	151 70
With B. & L.-Zeiss Protar VIIa in Auto.	94 45	119 30	149 40
With B. & L.-Zeiss Protar VIIa in Volute	108 75	133 60	165 70
Film Pack Adapter	1 50	2 50	
Film Pack (12 exposures)	90	1 60	

PONY PREMO NO. 7



PONY Premo No. 7 is a remarkable achievement in camera construction. There is no branch, no condition of amateur photography for which it is not admirably suited. In this model are found all the special advantages of Pony Premo No. 6, combined with those additional features which go to make one of the most complete hand cameras ever manufactured.

Especial attention is called to the drop bed construction which permits the use of lenses of the widest angle. By unclasp- ing the two supplementary side arms the bed can be dropped down, so as to remove it entirely from the path of the short focus lens, and a supplementary bed placed conveniently at the top of the camera when not in use, affords easy focusing facilities.

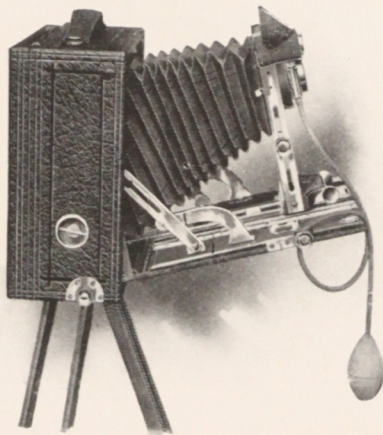
The movable extensions are constructed entirely of metal, are actuated by a single pinion and attached to the wooded bed by metal angle pieces. This construction obviates the possibility of difficulties caused by changing atmospheric conditions. The swing back is constructed on the most scientific principle and is actuated by rack and pinion, with locking device.

This camera is fitted regularly with B. & L. double valve automatic shutter of the very latest model. The lens is the B. & L. Planatograph, and bellows is of such length that either of the combinations can be used singly, or high power telephoto attachments may be fitted.

Every feature of this outfit is positive and thoroughly reliable.

Nothing has been forgotten or overlooked in its construction. The rising and falling front is operated by rack and pinion with locking device. The standard clamp is automatic, fastening firmly wherever released. An accurate double spirit level is supplied, hooded, reversible finder of the greatest brilliancy, and the back is reversible with the usual Premo simplicity and ease of operation.

The finish and general workmanship of this instrument must be seen to be appreciated. The shutter and all metal parts are highly nickeled and the covering is of the best seal grain leather. The carrying case is made of leather, is lined with the best red plush and has separate compartments for the camera and six holders.



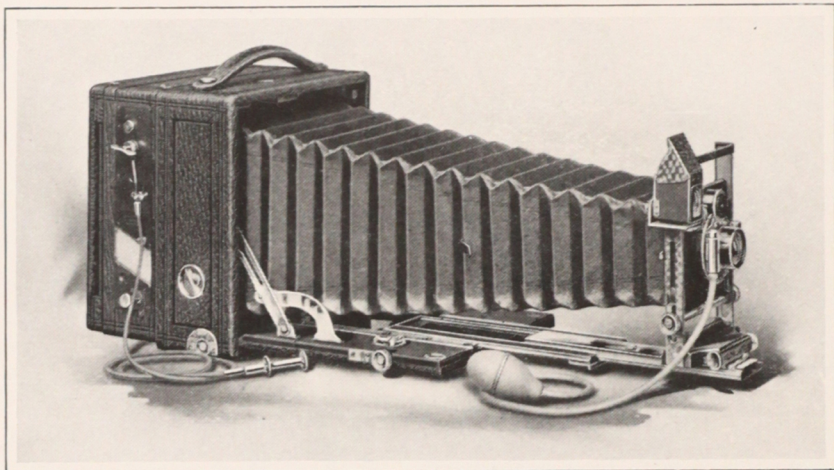
Just as all Pony Premo Cameras in 4 x 5 and 5 x 7 sizes, this model takes films or plates with equal facility, permitting ground glass focusing, daylight loading, tank development and other film conveniences when loaded with the Premo Film Pack. These advantages combined with its absolutely complete equipment make it an outfit equaled only by Premo Supreme.

Box—Mahogany, covered with leather of beautiful grain. BED—Mahogany, with triple extension. BACK—Reversible. SWING—Vertical; rack and pinion actuated, with locking device. FRONT—Rising and falling; rack and pinion actuated, with locking device. LENS BOARD—Removable. Dimensions, 4 x 5, 2 $\frac{5}{8}$ x 2 $\frac{5}{8}$ in.; 5 x 7, 3 $\frac{1}{2}$ x 3 $\frac{1}{2}$ in.; 6 $\frac{1}{2}$ x 8 $\frac{1}{2}$, 4 $\frac{1}{2}$ x 4 $\frac{1}{2}$ in. FINDER—Hooded brilliant, reversible. TRIPOD SOCKETS—Two. LENS—Planatograph. See page 55. SHUTTER—Double Valve Automatic. See page 52. CARRYING CASE—Sole leather, plush lined. BELLOWS—Red leather; draw 4 x 5, 13 $\frac{3}{4}$ in.; 5 x 7, 19 in.; 6 $\frac{1}{2}$ x 8 $\frac{1}{2}$, 22 in. DIMENSIONS—4 x 5, 3 $\frac{1}{2}$ x 6 $\frac{1}{4}$ x 6 $\frac{1}{4}$ in.; 5 x 7, 4 x 8 $\frac{1}{2}$ x 8 $\frac{1}{2}$ in.; 6 $\frac{1}{2}$ x 8 $\frac{1}{2}$, 5 x 9 $\frac{3}{4}$ x 9 $\frac{3}{4}$ in. WGT.—4 x 5, 3 $\frac{1}{2}$ lbs.; 5 x 7, 5 $\frac{1}{2}$ lbs.; 6 $\frac{1}{2}$ x 8 $\frac{1}{2}$, 8 $\frac{1}{2}$ lbs.

PRICES

	4 x 5	5 x 7	6 $\frac{1}{2}$ x 8 $\frac{1}{2}$
Pony Premo No. 7	\$ 50 00	\$ 60 00	\$ 75 00
With B. & L.-Zeiss Tessar IIb in Auto.	87 95	106 30	148 40
With B. & L.-Zeiss Tessar IIb in Volute	102 25	122 60	164 70
With B. & L.-Zeiss Protar VIIa in Auto.	107 45	132 30	162 40
With B. & L.-Zeiss Protar VIIa in Volute	121 75	146 60	178 70
Film Pack Adapter	1 50	2 50	
Film Pack	90	1 60	

PREMO SUPREME



A MAGNIFICENT camera superbly finished and combining all the distinctive Premo features in one instrument, the Premo Supreme stands without competition the finest and most efficient hand camera ever manufactured. It is, indeed, the supreme triumph of Premo construction. Its characteristics and detail of construction are exactly the same as those of the Pony Premo No. 7, in addition to which, its equipment includes the latest style automatic focal plane shutter, described on page 53, and the Bausch & Lomb Iconoscope finder.

Nothing to approach this superb camera in design and general finish has ever been shown by any other camera manufacturer.

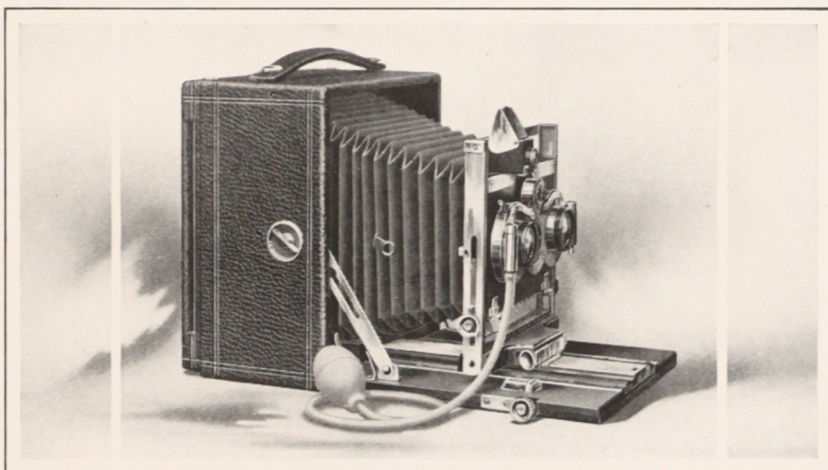
The metal work is damascened, the wood is highly polished and the covering genuine seal leather of beautiful grain.

List price of this outfit includes camera, double valve automatic shutter, Planatograph lens, plush lined carrying case of leather corresponding with that used on the camera, three plate holders and focal plane shutter.

PRICES

	4 x 5	5 x 7	6½ x 8½
Premo Supreme - - - - -	\$100 00	\$125 00	\$150 00
With B. & L.-Zeiss Tessar IIb in Auto.	137 95	171 30	223 40
With B. & L.-Zeiss Tessar IIb in Volute	152 25	187 60	239 70
With B. & L.-Zeiss Protar VIIa in Auto.	157 45	197 30	237 40
With B. & L.-Zeiss Protar VIIa in Volute	171 75	211 60	253 70
Film Pack Adapter - - - - -	1 50	2 50	
Film Pack (12 exposures) - - - - -	90	1 60	

STEREO PREMO



IN presenting the Stereo Premos to the public, attention is called to the fact that we have taken three of our most popular Pony Premo models and furnished them with complete Stereo equipments. Thus our Stereo cameras comprise all special features of the corresponding single models, so that there is no class of pictures obtainable with the regular camera, which cannot be made to equal advantage with the Stereo.

Furthermore, by merely using an extra lens board and single lens and shutter, regular 5 x 7 pictures are easily made. Hence the Stereo Premo is practically two cameras in one, or better four cameras in one, as films or plates can be used with equal facility for either stereoscopic or single pictures. No Stereo cameras of equal merit have ever been produced by any other manufacturer.

The regular equipment comprises B. & L. Automatic Stereo shutter and Planatograph lenses. The most desirable anastigmat lenses can, however, be easily fitted when desired. List price includes camera, double plate holder, sole leather carrying case and one extra lens board.

PRICES

No. 4 Stereo Premo, Planatograph Lenses, $f:8$	-	-	-	-	\$50 00
No. 6 Stereo Premo, Planatograph Lenses, $f:8$	-	-	-	-	65 00
No. 7 Stereo Premo, Planatograph Lenses, $f:8$	-	-	-	-	78 00

For prices on these cameras with Anastigmat Lenses, see page 42.

THE VIEW CAMERAS

FOR commercial photographers and in all work of a semi-professional nature we offer remarkable values in view cameras. In compactness, range of work and efficiency, there are no view cameras on the market which will bear favorable comparison with our various models at equal prices.

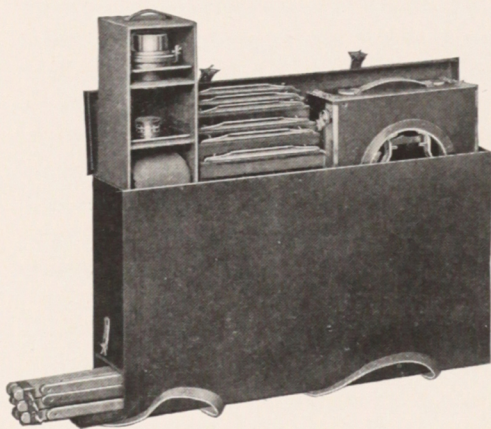
We have always given particular attention to cameras of this class, and in the case of all three that we list, especial attention is called to the rigidity and strength obtained without sacrifice of compactness and easy manipulation of parts. Thus these cameras will withstand the hardest usage, while at the same time they fold up very compactly and are remarkably light in weight and easy to carry.

The cameras are finished in the best possible manner, all wooden parts are hand polished, and the metal trimmings are of lacquered brass.

Every adjustment of importance to the worker in this class of photography is provided. Each view camera is fitted with

horizontal and vertical swing, reversible back, rising and falling front, rack and pinion focusing attachment, and they are all constructed so that lenses of extreme angle may be used.

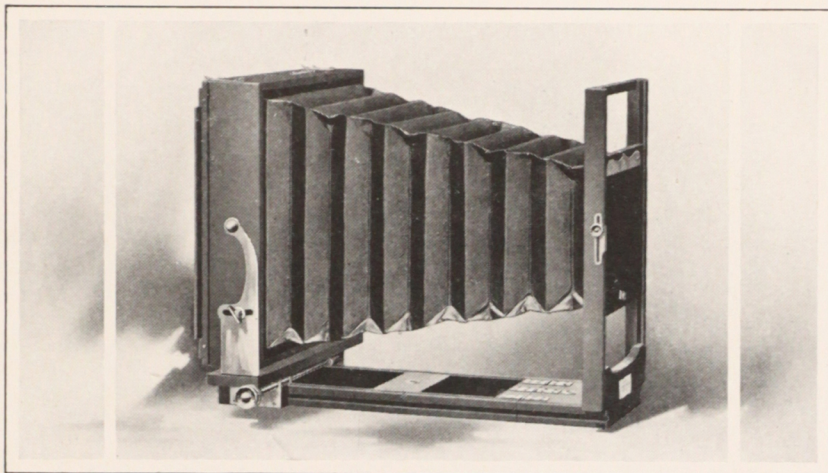
The photographer should bear in mind the fact that these cameras, from the cheapest to the most expensive, bear the stamp of Premo superiority, the difference in price being due to material used and the detail of equipment.



Case of Premo View Camera
(see page 37)

The list price of all view cameras includes a durable felt lined canvas case and one plate holder. In each case separate compartments are provided for the camera and several plate holders excepting for R. O. C. View. The regular case for this camera is of the square style without partition. Long case can, however, be supplied when desired, at a slight advance in price.

THE R. O. C. VIEW



THIS is the most efficient and reliable view camera ever offered to commercial photographers at such low prices.

It is built on very strong lines and provided with those adjustments so necessary to the professional worker. The front standard being firmly attached to the bed is extremely rigid and hence will accommodate the heaviest lenses. Focusing is from the back entirely, a convenient rack and pinion attachment being furnished which moves the complete back to any point on the bed desired, where a clamping device fastens it firmly. The camera has both vertical and horizontal swing, rising and falling front, and reversible back.

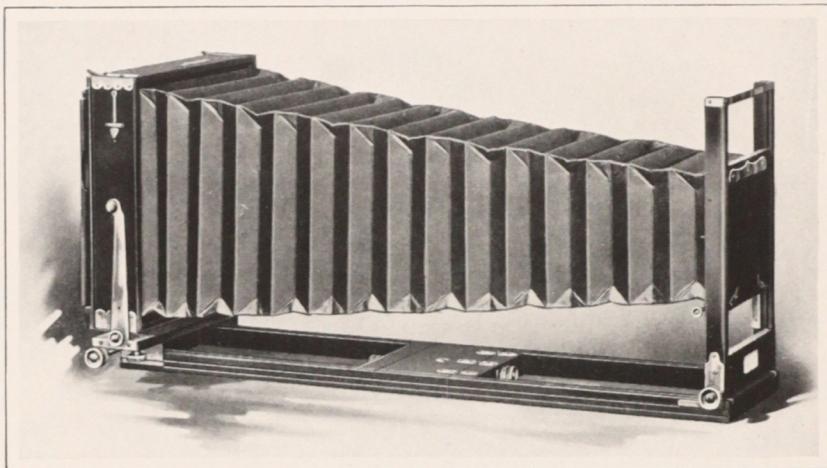
It is especially adapted for interior work as the back can be moved as close to the front as desired, so that lenses of extreme wide angle may be readily used.

All wood parts of the R. O. C. View are of mahogany finish, the metal is lacquered brass and the camera folds up compactly.

The outfit as listed comprises camera, one plate holder and carrying case. The case is of the square style without partition. Long style case will be furnished at following extra prices: 5 x 7, \$0.75; 6½ x 8½, \$0.75; 8 x 10, \$1.00.

Size	Bellows Draw	Weight	Size of Lens Board	Price
5 x 7	14 in.	4 lbs.	3¾ x 3¾	\$15 00
6½ x 8½	15½ in.	4¾ lbs.	4¼ x 4¼	16 00
8 x 10	17 in.	5¾ lbs.	5 x 5	17 00

EMPIRE STATE



THE Empire State for years has been a favorite among the most exacting commercial photographers and those persons who use an exclusively tripod outfit for scientific or other work. This camera has a very great focal capacity which fits it admirably for copying, long distance, and telephoto work in general. Furthermore, it is provided with both front and back focus pinion actuated, so that the back may be racked up close to the front in such manner that the widest angle lenses may be used without cutting off.

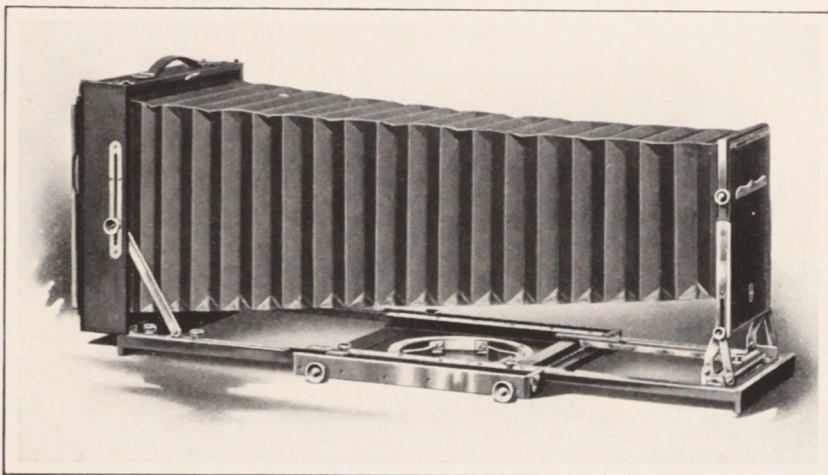
It also has both horizontal and vertical swing, reversible back and rising front actuated by rack and pinion. The focus is adjusted either from the front or back up to the 14 x 17 size. The 14 x 17 and larger sizes are made with back focus only.

The Empire State is a very handsome model. All wood used in its construction is highly polished mahogany, the metal parts are of the best lacquered brass, and it will withstand the hardest usage. A carrying strap is attached to the top of the box. List price includes one plate holder and canvas carrying case.

Size	Bellows Draw	Weight	Size of Lens Board	Price
5 x 7	22 in.	5 lbs.	3 $\frac{3}{4}$ x 3 $\frac{3}{4}$ in.	\$21 00
6 $\frac{1}{2}$ x 8 $\frac{1}{2}$	27 in.	5 $\frac{3}{4}$ lbs.	4 $\frac{1}{4}$ x 4 $\frac{1}{4}$ in.	22 00
8 x 10	30 in.	7 $\frac{3}{4}$ lbs.	5 x 5 in.	25 00
11 x 14	37 in.	11 $\frac{1}{2}$ lbs.	5 $\frac{3}{4}$ x 5 $\frac{3}{4}$ in.	36 00
14 x 17	48 in.	23 $\frac{3}{4}$ lbs.	7 x 7 in.	60 00

Prices on larger sizes will be furnished on application.

PREMO VIEW CAMERA



THIS outfit is the outcome of our long experience in view camera construction and of inquiries and suggestions from photographers, meeting unusual conditions in their outside work. It is the most complete view camera in existence.

Focuses from both front and rear, so that the extra long bellows may be readily used for tele-photo or other work, or the body of the instrument brought forward, permitting the use of lenses of the widest angle, without "cutting off." The instrument always balances on the tripod no matter what the position of the front and back; has vertical and horizontal swing, and extreme rising front easily manipulated. Back is reversible, lens board removable and very large; standard support so strong and rigid that the heaviest lenses may be used without difficulty.

The case is waterproof and is a decided novelty; a special tripod pocket being provided in the bottom, opening at the end so that the tripod may be removed at any time without disturbing the camera or plate holders. In addition, a separate compartment is provided for carrying extra lenses, focusing cloth or other accessories which may be needed. See illustration page 34. List price includes camera, tripod, plate holder and case.

Size	Bellows Draw	Weight	Size of Lens Board	Price
6½ x 8½	27 in.	8 lbs.	4 x 4 in.	\$52 00
8 x 10	30 in.	9½ lbs.	4½ x 4½ in.	58 00

PREMO FILM PACK SYSTEM

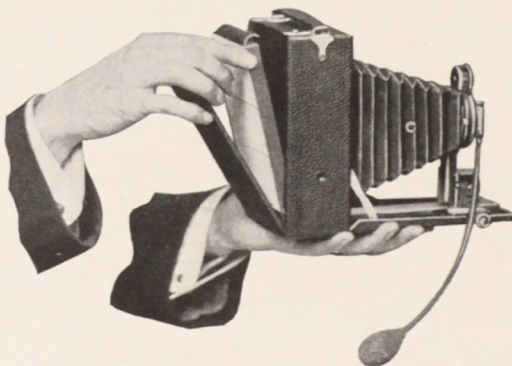
WE now come to a description of the Premo Film Pack System, that system which has done much to sustain interest in amateur photography. That system which has so popularized the Premo Film Cameras—which has im-



The Premo Film Pack

pelled thousands of amateurs to search out of the attic, old half forgotten plate cameras, to be converted into daylight loading film instruments, by the simple addition of a film pack holder, or as we call it, the Premo Film Pack Adapter. In reading over this description, we especially want you to note the simple construction of the pack and the ease of using it with either film or plate camera.

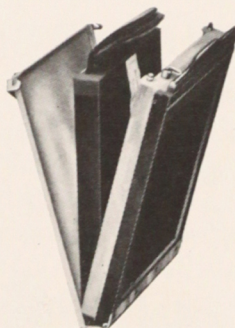
The Premo Film Pack consists of twelve films packed in a flat light-tight carton, on one side of which is left an opening the exact size and shape of the film to be exposed. At the top, thirteen black paper tabs protrude; the first marked "Safety Cover," the others numbered consecutively from one to twelve. The "Safety Cover" tab is the continuation of a black sheet of paper which fills up the above mentioned opening and protects the first film from the light. When the pack is loaded in the camera this tab is drawn out as far as it will come, which operation pulls the black paper from in front of the first film around to the back of the pack. The first exposure may now be made. Film No. 1 is attached to a similar piece of paper, the continuation of which is tab No. 1. After the exposure, this tab is drawn out, pulling Film No. 1 around to the back and uncovering Film No. 2 for exposure. In this manner successive tabs are withdrawn and exposures made until the pack is exhausted, when it may be removed in any light and a fresh one substituted. The tabs when pulled



Loading is so Easy

out, being of no further use, are torn off and thrown away.

During the above operation, at any time one or more films may be removed for development, as follows: The camera is taken to the dark room, the pack removed, the two red seals at each side cut, and the bottom flap pulled down. The exposed films may be easily removed, the flap reclosed and the pack replaced in the camera, ready for the remaining exposures. This operation may be repeated as often as desired, until the film pack is exhausted. Development may be by either tank or tray system, as preferred.

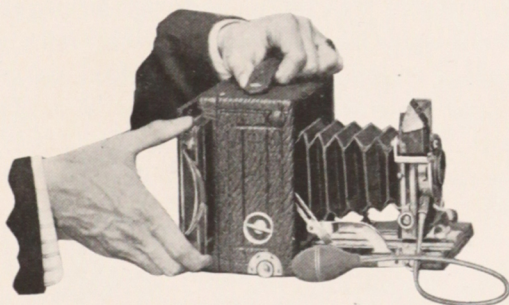


The Adapter

THE PREMO FILM PACK ADAPTER

The Premo Adapter provides for the use of the Premo Film Pack in any of our plate cameras, up to and including the 5 x 7 sizes. It is a device very similar in size and shape to an ordinary plate holder; in fact, the face is identically the same, but there is no middle septum and the back is hinged so that the pack may be dropped in place, the back closed and the adapter inserted in the camera just as the ordinary holder. The entire operation of loading and unloading is effected in broad daylight.

Exposures are then made with the film pack as usual, but at any time the adapter slide may be inserted and the adapter removed in daylight. In this manner each image, before the exposure, may be sharply focused on the ground glass just as though plates were being used, and, of course, if desired, the adapter can be taken to the dark room at any time and as many exposures as have been made, removed for development.



The Adapter is Loaded in a Plate Camera just like an Ordinary Plate Holder

PRICES

PREMO FILM PACK

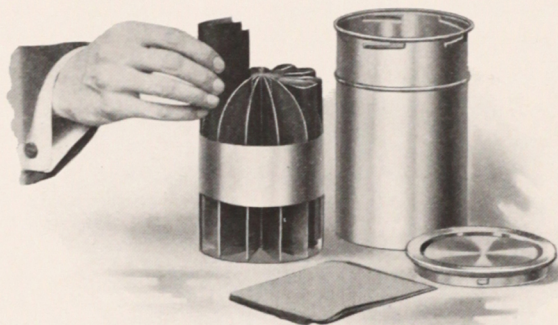
2 1/4 x 3 1/4	-	-	\$0 40
3 1/4 x 4 1/4	-	-	70
3 1/4 x 5 1/2	-	-	80
4 x 5	-	-	90
5 x 7	-	-	1 60

PREMO FILM PACK ADAPTER

3 1/4 x 4 1/4	-	-	\$1 00
3 1/4 x 5 1/2	-	-	1 50
4 x 5	-	-	1 50
5 x 7	-	-	2 50

THE PREMO DEVELOPING TANK

THE Premo Developing Tank provides for the development of Premo Film Pack films with the minimum of care and labor and with the assurance of absolute uniformity of results. Simple and inexpensive, it puts the veriest



Inserting Films in Receiver

beginner in photography on the same plane in the development of his pictures, as the most experienced amateur.

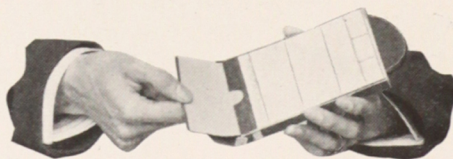
Do not understand us as reflecting upon the results which it is possible to secure by ordinary tray

development. Many amateurs will always insist upon the personal attention to their films which tray development affords, and for these, nothing could be better than the Premo Film Pack, as the films are all separate and are handled with the same ease in tray development as dry plates.

But Premo Tank Development is very much easier and very much surer. It is to those who dislike to give to their films the time and attention necessary for proper tray development, or to those who, from inexperience, do not always get the best out of their negatives, that the Premo Developing Tank will be invaluable. And we personally recommend it to even the most careful workers, as being infinitely simpler than the older method and producing results equal if not superior to those which they can get by the most painstaking tray development.

The Premo Developing Tank consists essentially of two pieces—a metal receiver or frame for the films, and a tank with cover for the developing fluid.

The receiver is divided into twelve compartments,—in the 5 x 7 size, six—each accommodating one film. As the film is taken from the pack, it is held



Removing Films from Pack for Development

between the thumb and fingers, slightly bent from top to bottom, and slipped into its respective compartment. When all the compartments are filled, the receiver is placed in tank, which has been previously filled with developer, the top replaced and the films left to develop for a certain specified time. No further attention is necessary, excepting to turn the tank, end for end, when half the time of development has elapsed.

At the expiration of the full time, open the tank, take out receiver, remove films, place them in a tray of water for a moment, then transfer to the fixing bath. Development is completed. Rinse out receiver and tank and set them aside to dry.

That's all there is to it. The films will be found perfectly even and uniform in development. Time and instantaneous exposures from the same pack, made under varying conditions, will be found to be developed to their full value.

The operation of removing films from the pack and loading the receiver is done, of course, in a darkened room by the light of a ruby lamp.

During the day any darkened closet will suffice. To load the films in receiver, the operation will take only two or three minutes, and as soon as the top is placed on tank, it may be brought out into any light and left until development is completed.

But as the great majority of amateur photographers find their most convenient time for developing, at night, and as films developed during the day can very seldom be got ready for printing during the same day, we suggest that developing be done, as far as possible, at night, when any room in which the shades are drawn will answer, and the films will be perfectly dry and ready for use the next morning.

If desired to develop less than a dozen films, one merely removes from his pack as many films as have been exposed and places them in the receiver in the same manner as described above.



Placing Receiver in Developing Tank

PRICES

PREMO DEVELOPING TANK

No. 2, for 12 $3\frac{1}{4} \times 4\frac{1}{4}$, $3\frac{1}{4} \times 5\frac{1}{2}$ or 4 x 5 Films	-	-	-	\$3 50
No. 3, for 6 5×7 Films	-	-	-	4 00

SPECIAL EQUIPMENTS

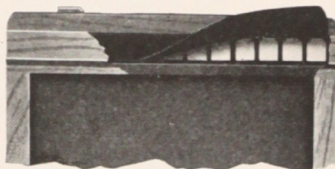
Style of Camera	Page	Size of Picture	B. & L. Plastigmat f : 6.8 and Auto Shutter		B. & L. Plastigmat f : 6.8 and Volute or XL Sector Shutter		C. P. Goerz Dagor Series III f : 6.8 and Auto Shutter		C.P. Goerz Dagor Series III f : 6.8 and Volute or XL Sector Shutter		T. T. & H. Cooke Series III f : 6.5 and Auto Shutter		T. T. & H. Cooke Ser. III f : 6.5 and Volute or XL Sector Shutter		Becks Isostigmat, Ser. II f : 6.3 Lens and Volute Shutter	
			No.	Price	No.	Price	No.	Price	No.	Price	No.	Price	No.	Price	No.	Price
Film Premo No. 3	14	$3\frac{1}{4} \times 4\frac{1}{4}$	1—	\$ 47 70	1—	\$ 62 00	0—	\$ 51 20	0—	\$ 65 50	3—	\$ 48 70	3—	\$ 63 00	3—	\$ 50 00
		$3\frac{1}{4} \times 5\frac{1}{2}$	2—	55 95	2—	70 25	1—	60 95	1—	75 25	4—	55 45	4—	69 75	4a—	58 75
		4×5	2—	55 95	2—	70 25	1—	60 95	1—	75 25	4—	55 45	4—	69 75	4—	57 25
Filmplate Premo	20	$3\frac{1}{4} \times 4\frac{1}{4}$	1—	55 70	1—	70 00	0—	59 20	0—	73 50	3—	56 70	3—	71 00	3—	58 00
		$3\frac{1}{4} \times 5\frac{1}{2}$	2—	64 45	2—	78 75	1—	69 45	1—	83 75	4—	63 95	4—	78 25	4a—	67 25
		4×5	2—	64 45	2—	78 75	1—	69 45	1—	83 75	4—	63 95	4—	78 25	4—	65 75
Star Premo	22	$3\frac{1}{4} \times 4\frac{1}{4}$	1—	54 20	1—	68 50	0—	57 70	0—	72 00	3—	55 20	3—	69 50	3—	56 50
		4×5	2—	62 95	2—	77 25	1—	67 95	1—	82 25	4—	62 45	4—	76 75	4—	64 25
Pony Premo No. 4	27	4×5	2—	61 95	2—	76 25	1—	66 95	1—	81 25	4—	61 45	4—	75 75	4—	63 25
		5×7	3—	77 30	3—	91 60	2—	80 80	2—	95 10	6—	82 30	6—	98 60	6—	85 60
Pony Premo No. 6	28	4×5	2—	74 95	2—	89 25	1—	79 95	1—	94 25	4—	74 45	4—	88 75	4—	76 25
		5×7	3—	92 30	3—	106 60	2—	95 80	2—	110 10	6—	97 30	6—	113 60	6—	100 60
		$6\frac{1}{2} \times 8\frac{1}{2}$	5—	129 90	5—	146 20	4—	130 40	4—	146 70	7—	145 90	7—	162 60		
Pony Premo No. 7	30	4×5	2—	87 95	2—	102 25	1—	92 95	1—	107 25	4—	87 45	4—	101 75	4—	89 25
		5×7	3—	105 30	3—	119 60	2—	108 80	2—	123 10	6—	110 30	6—	126 60	6—	113 60
		$6\frac{1}{2} \times 8\frac{1}{2}$	5—	142 90	5—	159 20	4—	143 40	4—	159 70	7—	158 90	7—	175 60		
Premo Supreme	32	4×5	2—	137 95	2—	152 25	1—	142 95	1—	157 25	4—	137 45	4—	151 75	4—	139 25
		5×7	3—	170 30	3—	184 60	2—	173 80	2—	188 10	6—	175 30	6—	191 60	6—	178 60
		$6\frac{1}{2} \times 8\frac{1}{2}$	5—	217 90	5—	234 20	4—	218 40	4—	234 70	7—	233 90	7—	250 60		
Stereo Premo No. 4	33			116 20				123 20				118 20				
Stereo Premo No. 6	33			131 20				138 20				133 20				
Stereo Premo No. 7	33			144 20				151 20				146 20				

The above lens can be fitted only with Volute Shutter.

PREMO ACCESSORIES

PREMO PLATE HOLDERS

For twenty years the superiority of the Premo Plate Holders has been universally recognized and conceded. In connection with the convenience of the spring bar device for loading and unloading, an additional improvement is now incorporated in their manufacture which consists of a very flexible and resilient light trap constructed of finely tempered non-corrosive metal with independently operating spring fingers overlaid with a closely woven and specially prepared fabric. The fingers bring this fabric into such close and immediate contact with the shutter cover that a slide can be inserted cornerwise without admitting light to the plate when such error is made.



This makes in all the most effective light trap ever devised.

The improvement is fully covered by United States patents and is not to be compared with the cheap imitations offered in competition, in which corrosive metal, wood, celluloid and other materials highly subject to atmospheric changes are used.

Premo Holders are entirely fitted with hard rubber slides.

$3\frac{1}{4}$ x $4\frac{1}{4}$	-	-	-	\$1 00	5 x 7	-	-	-	\$1 25
$3\frac{1}{4}$ x $5\frac{1}{2}$	-	-	-	1 00	$6\frac{1}{2}$ x $8\frac{1}{2}$	-	-	-	1 75
4 x 5	-	-	-	1 00	8 x 10	-	-	-	2 00

UNIVERSAL PLATE HOLDERS

These holders up to and including the 8 x 10 size are manufactured identically the same as Premos except that they are heavier in construction and made to fit the Empire State and Premo View Cameras. Slides are pressboard unless otherwise specified.

5 x 7	-	-	-	\$1 25	11 x 14	-	-	-	\$4 00
$6\frac{1}{2}$ x $8\frac{1}{2}$	-	-	-	1 75	14 x 17	-	-	-	5 00
8 x 10	-	-	-	2 00					

R. O. C. PLATE HOLDER

This holder is of good construction and is adapted for use in the R. O. C. View Camera, but cannot be used in Empire State or Premo View Cameras. It has pressboard slides.

5 x 7	-	\$1 00	$6\frac{1}{2}$ x $8\frac{1}{2}$	-	\$1 50	8 x 10	-	\$1 75
-------	---	--------	---------------------------------	---	--------	--------	---	--------

STANDARD DRY PLATES

The Standard Extra Dry Plate is a favorite among amateur photographers as it is a plate of general utility; one that will give satisfactory results under almost all conditions.

While not extremely rapid, it is preferred by many for portrait work owing to the brilliant quality of the negatives which it produces.

We recommend the Standard as the best medium priced, all-around, single coated plate on the market.

They are on sale by dealers throughout the country.

Size	Dozen in Case	Price per Dozen	Size	Dozen in Case	Price per Dozen
$3\frac{1}{4} \times 4\frac{1}{4}$	30	\$0 45	5 x 8	20	\$1 25
$3\frac{1}{4} \times 5\frac{1}{2}$	30	65	$6\frac{1}{2} \times 8\frac{1}{2}$	12	1 65
4 x 5	30	65	8 x 10	10	2 40
$4\frac{1}{4} \times 6\frac{1}{2}$	30	90	10 x 12	4	4 20
5 x 7	20	1 10	11 x 14	4	6 00

HOLDER SLIDES

Extra slides for any of our holders will be supplied when desired, in either hard rubber or pressboard, at following prices:

Size	Price		Size	Price	
	Press-board	Hard Rubber		Press-board	Hard Rubber
$3\frac{1}{4} \times 4\frac{1}{4}$	\$0 10	\$0 20	$6\frac{1}{2} \times 8\frac{1}{2}$	\$0 25	\$0 50
$3\frac{1}{4} \times 5\frac{1}{2}$	15	25	8 x 10	35	65
4 x 5	15	25	11 x 14	50	1 00
5 x 7	20	35			

HOLDER KITS

These are intended for holding small plates in large plate holders, and are made of well seasoned material that will not warp. They are invaluable in many instances.

Size Outside	Size of Opening for Plate				Price
4 x 5	$3\frac{1}{4} \times 4$	$3\frac{1}{4} \times 4\frac{1}{4}$			\$0 20
5 x 7	$3\frac{1}{4} \times 4$	$3\frac{1}{4} \times 4\frac{1}{4}$	4 x 5	$4\frac{1}{4} \times 6\frac{1}{2}$	25
5 x 8		$3\frac{1}{4} \times 4\frac{1}{4}$	4 x 5		25
$6\frac{1}{2} \times 8\frac{1}{2}$	$3\frac{1}{4} \times 4\frac{1}{4}$	4 x 5	$4\frac{1}{4} \times 6\frac{1}{2}$	5 x 7	30
8 x 10		5 x 7	$6\frac{1}{2} \times 8\frac{1}{2}$		40
11 x 14		$6\frac{1}{2} \times 8\frac{1}{2}$	8 x 10	10 x 12	50
14 x 17		10 x 12	11 x 14		80

THE PREMO DEVELOPING AND PRINTING OUTFIT



Everything necessary to the amateur for the development and printing of his pictures, is contained in this outfit. It comprises the following articles, which purchased separately, would cost considerably more than the price which we make on the complete outfit:

1 Premo Candle Lamp, 1 Printing Frame, 1 Printing Frame Glass, 1 4-oz. Graduate, 1 Stirring Rod, 4 Electrore Trays, $\frac{1}{2}$ lb. Acid Hypo, $\frac{1}{2}$ oz. Bromide Potassium, 4 oz. Solio Toning Solution, 2 doz. Solio Paper, 1 pkg. 5 Tubes Special Developer, 1 Instruction Book. Packed in a substantial wooden box.

NOTE—These outfits cannot be sent by mail.

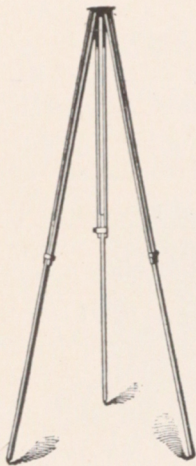
Price, 4 x 5 and smaller, \$2 00

PREMO OPTICAL OUTFIT

This outfit consists of a set of supplementary lenses, ray filter and duplicator, and is for use with 4 x 5 and 5 x 7 cameras whose lens barrels do not exceed $1\frac{5}{16}$ inches in diameter. These lenses slip over the regular lens of the camera like a cap. They give the owner of one good objective lens the advantage of five different focal lengths. These combinations will be supplied separately when desired. The six lenses are neatly enclosed in a plush lined case leather covered.



Outfit complete for 4 x 5, diam. of lens $1\frac{5}{16}$ "	\$6 00
Outfit complete for 5 x 7, diam. of lens $1\frac{5}{8}$ "	6 00
Enlarging & Copying lens \$1 25	Portrait lens 1 25
Wide-Angle lens - - 1 25	Ray Filter 1 00
Tele-Photo lens - - - 1 25	Duplicator 40



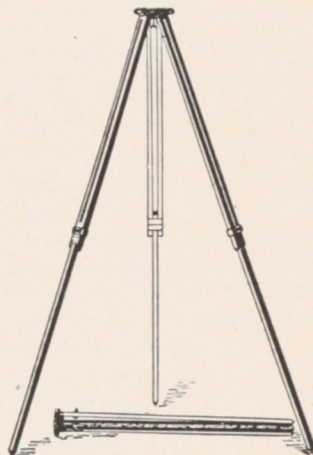
RAY SLIDING TRIPOD

Although very light this is an extremely rigid tripod, and is designed for cameras up to and including the 4 x 5 size. The wood is straight grain spruce with shellac finish, the metal trimmings and head are of lacquered brass. The weight complete, including head and screw, is but 16 ounces. When extended for use the length can be made to vary from twenty-nine to fifty-four inches.

Price, 80 cents

SLIDING TRIPOD

As a rigid tripod none will be found more satisfactory than the Sliding. The legs are made in two sections, producing a very firm support. The top is of wood covered with cloth. The two smaller sizes are made of spruce, the larger of ash. They are well finished and the metal parts are of lacquered brass.

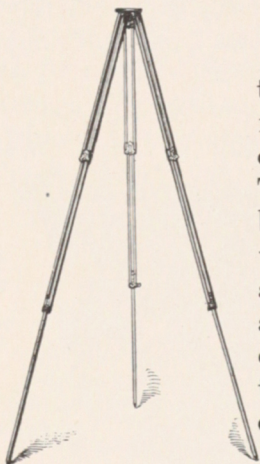


Style	Size of Camera	Weight	Price
No. 1	5 x 7 and smaller	2 lbs.	\$2 00
No. 2	5 x 8 and 6 1/2 x 8 1/2	2 lbs. 8 ozs.	2 50
No. 3	8 x 10 and 10 x 12	4 lbs. 8 ozs.	3 00
No. 4	11 x 14 and 14 x 17	7 lbs. 3 ozs.	4 00

R. O. C. TRIPOD

The R. O. C. Tripod is of the combination type. The wood parts are of maple, beautifully finished in natural color. The head is of metal with leather covered wooden top. The clamp bands are of new design, and may be readily set. The metal parts are of brass well finished and lacquered. A very desirable tripod for use with any camera up to and including the 5 x 7 size. Length when extended, fifty-seven inches; when folded, twenty-two inches. Weight, thirty-two ounces.

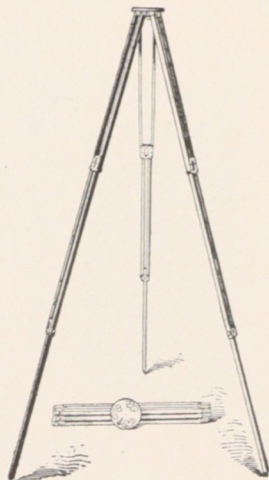
Price, \$1 70



COMBINATION TRIPOD

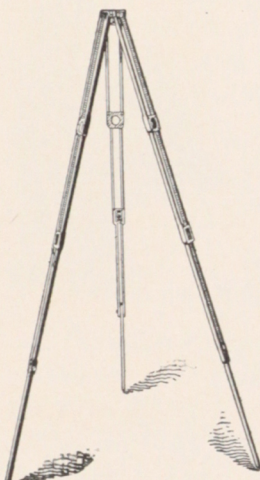
This tripod is made on the sliding and folding principle. The wood parts are of ash and the finish is of the very best. The trimmings are of brass with lacquer finish. The length when extended varies according to size from fifty-six to fifty-nine inches; when folded, from twenty-two to twenty-three inches.

Style	Size of Camera	Weight	Price
No. 2½	6½ x 8½ and smaller	3 lbs. 2 ozs.	\$3 00
No. 3	8 x 10 and 10 x 12	4 lbs. 3 ozs.	3 50
No. 4	11 x 14 and 14 x 17	5 lbs.	4 50
No. 5	17 x 20 and 20 x 24	7 lbs.	6 00



PREMO TRIPOD

The legs of this tripod are constructed in four sections, the first sliding into the second, these two into the third, while the upper section folds back upon the third. The length when extended varies according to size from fifty-six to fifty-eight inches; when folded, from sixteen and a half to seventeen and a half inches. Premo tripods are made of ash with Flemish oak finish.

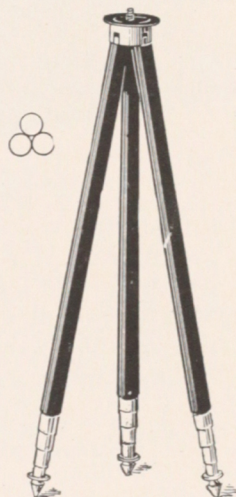


Style	Size of Camera	Weight	Price
No. 2	4 x 5 and 5 x 7	1 lb. 13 ozs.	\$5 00
No. 3	5 x 7 and 6½ x 8½	2 lbs. 13 ozs.	6 00
No. 4	6½ x 8½ and 8 x 10	4 lbs. 1 oz.	7 00

METAL TRIPOD

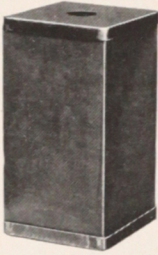
The various sections of each leg of this tripod work on the telescopic plan, and as each one is pulled out, sets automatically until the entire tripod is extended, producing a very rigid and safe support. To close the tripod it is only necessary to press the top button of each leg, when the various sections will all telescope, and the tripod cannot possibly close until this button is pressed.

Style	Sec.	Length clos'd	Length extend.	Weight	Price
No. 1	4	15½ ins.	48½ ins.	23 ozs.	\$3 50
No. 2	5	14½ ins.	49½ ins.	28 ozs.	4 50

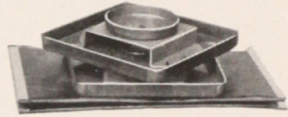


PREMO CANDLE LAMP

The Premo Candle Lamp is of folding design and when not in use can be readily carried in the pocket. The top and bottom are made of metal, the sides of special fabric. It accommodates a large candle and illuminates from all sides, giving a strong, safe light for the dark room.



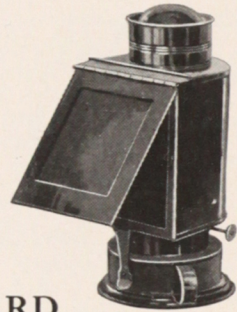
Premo Candle Lamp	-	\$ 25
Candles, per dozen	-	30
Candles, per gross	-	3 00



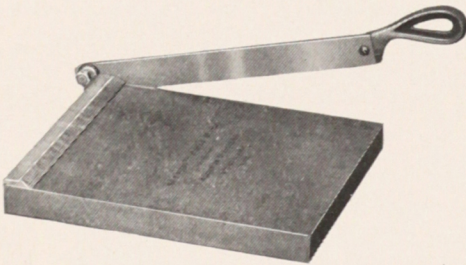
UNIVERSAL DARK ROOM LAMP

This is a very popular lamp and produces a clear, steady light, perfectly safe and efficient for the dark room. It has a combination orange and ruby glass which may be used singly or together. The broad wick supplied is regulated from the outside and an adjustable shield prevents white light from escaping.

Price, \$1 00



PREMO TRIMMING BOARD



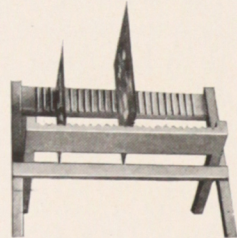
A thoroughly reliable trimming board at a moderate price, constructed of hard wood with natural finish. The blade is of the best steel, and a rule is fitted to the board for measuring prints.

No. 1, 4 x 5 in.	-	\$0 40
No. 2, 7 x 7 in.	- -	60

PREMO NEGATIVE RACK

This is a very substantial article made of the best seasoned cherry, accommodating negatives of all sizes. It folds flat when not in use and prevents the possibility of negatives being scratched while drying.

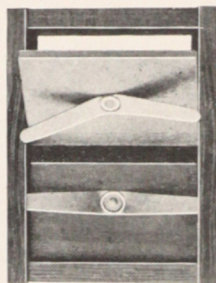
No. 1, for 12 negatives	- - - -	\$0 20
No. 2, for 24 negatives	- - - -	25



AMATEUR PRINTING FRAME

This frame is light and strong; made of the best seasoned cherry and has reliable spring brass mountings. It is well finished, durable and thoroughly reliable in every way.

Size	Price	Size	Price
3 $\frac{1}{4}$ x 4 $\frac{1}{4}$	\$0 25	4 x 5	\$0 25
3 $\frac{1}{4}$ x 5 $\frac{1}{2}$	30	5 x 7	35



PREMO RAY SCREEN

The Premo Ray Screen is of great assistance for producing cloud effects in outdoor photography. By the use of this screen a more equal exposure can be obtained of sky, clouds and landscape, thus bringing out the detail of subject without losing cloud effect.

Size	Outside Diam.	Diam. of Lens	Price
No. 1	1 $\frac{1}{2}$ in.	1 $\frac{1}{4}$ in.	\$0 40
No. 2	2 in.	1 $\frac{3}{4}$ in.	50
No. 3	3 $\frac{1}{4}$ in.	2 $\frac{7}{8}$ in.	75



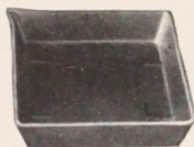
PREMO PRINT ROLLER

A very inexpensive roller for mounting prints. It consists of a piece of pure rubber tubing placed over an accurately turned dowel and mounted to an iron holder. This roller will last indefinitely.

Price, 4 inch, 20 cents

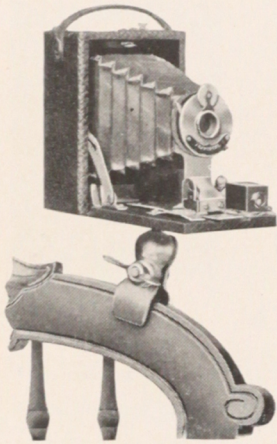
PREMO DEVELOPING TRAYS

Electrose Trays are light in weight, and are not affected by the action of chemicals. They have ridges on the bottom and are not easily broken.



Size	Price	Size	Price
3 $\frac{1}{4}$ x 4 $\frac{1}{4}$	\$0 12	5 x 8	\$0 30
4 x 5	15	6 $\frac{1}{2}$ x 8 $\frac{1}{2}$	40
5 x 7	25	8 x 10	55

THE UNIVERSAL CLAMP



The Universal Clamp is a small, convenient article which takes the place of a tripod. It can be carried readily in the pocket, is very light, and may be attached to a chair, fence, the front board of an automobile, or other object which may be at hand. The screw of this clamp is made in the Universal pattern, so that it may be used with any modern hand camera.

The clamp jaws are padded with felt, obviating any danger of marring the surface of the article on which it is used; and the whole device is nickel-plated.

Price, 75 cents

PREMO MOUNTS

BEVPLANE

NAPLES

Carbon Black and Scotch Gray				Queen Gray and Artist's Brown			
For Prints	Size Outside	Per 50	Per 100	For Prints	Size Outside	Per 50	Per 100
2 1/4 x 3 1/4	4 x 5	\$0 30	\$0 60	2 1/4 x 3 1/4	4 x 5	\$0 45	\$0 85
3 1/4 x 4 1/4	4 3/4 x 5 3/4	45	85	3 1/4 x 4 1/4	5 x 6	50	95
3 1/4 x 5 1/2	4 3/4 x 7	45	90	3 1/4 x 5 1/2	5 1/4 x 7 1/2	65	1 25
4 x 5	5 1/2 x 6 1/2	45	90	4 x 5	5 1/2 x 6 1/2	55	1 05
5 x 7	7 x 9	85	1 70	5 x 7	7 x 9	1 00	1 95

No orders accepted for less than fifty of one kind and size.

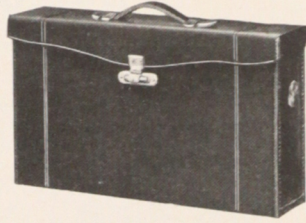
TWO COLOR BRISTOL BLANKS

A very desirable flexible stock mount, for Black and White and Sepia prints. Colors: Champagne and Golden Brown for sepias; Parisian Gray and Cream White for black and white.

Colors	For Prints	Size of Mount	Price per Dozen
White and Gray - - -	2 1/4 x 3 1/4	5 x 6	12 cents
Brown and Champagne - -	2 1/4 x 3 1/4	5 x 6	12 "
White and Gray - - -	3 1/4 x 4 1/4	5 3/4 x 6 3/4	15 "
Brown and Champagne - -	3 1/4 x 4 1/4	5 3/4 x 6 3/4	15 "
White and Gray - - -	3 1/4 x 5 1/2	6 1/4 x 8 1/2	20 "
Brown and Champagne - -	3 1/4 x 5 1/2	6 1/4 x 8 1/2	20 "
White and Gray - - -	4 x 5	6 3/4 x 8 3/4	20 "
Brown and Champagne - -	4 x 5	6 3/4 x 8 3/4	20 "
White and Gray - - -	5 x 7	8 x 10	25 "
Brown and Champagne - -	5 x 7	8 x 10	25 "

PREMO CARRYING CASES

The best sole leather is used in the construction of all Premo Cases excepting those for box cameras and for Pony Premo No. 1 and No. 2; these are made of leather covered board. Cases for Star Premo, Pony No. 6 and No. 7 are velvet lined and highly ornamented. View Camera Cases as listed are made of canvas, lined with felt, and have space for the camera and several holders.



Cameras	3¼ x 4¼	3¼ x 5½	4 x 5	5 x 7	6½ x 8½
Box Film Premo, square	\$1 50	\$	* \$1 75	\$	\$
Film Premo No. 1 “	1 50	1 75	1 75	2 50	
Film Premo No. 3 “	1 50	1 75	1 75		
Premograph “	1 75				
Premograph No. 2 “	2 50				
Pocket Premo C “	1 50				
Filmplate Premo, square	2 00	2 25	2 25		
Star Premo, long	4 00		5 00		
Pony Premos 1 and 2, long			1 50	2 00	
Pony Premos 3 and 4 “			4 00	5 00	
Pony Premo No. 6 “			5 00	6 00	8 00
Pony Premo No. 7 “			6 00	8 00	12 00
Premo Supreme “			15 00	20 00	25 00
View Cameras	5 x 7	6½ x 8½	8 x 10	11 x 14	14 x 17
R. O. C. View, square	\$1 75	\$2 00	\$2 25	\$	\$
Empire State, long	2 00	2 25	2 50	3 25	5 00
Premo View “		4 00	5 00		

BELLOWS

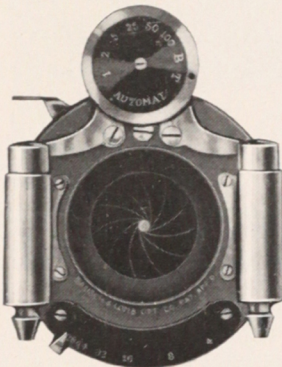
Extra bellows will be supplied for cameras when desired, at following prices:

Cameras	3¼ x 4¼	3¼ x 5½	4 x 5	5 x 7	6½ x 8½
Film Premo No. 1	\$1 50	\$1 75	\$1 75	\$2 50	\$
Film Premo No. 3	1 75	2 00	2 00		
Pocket Premo C	1 75				
Filmplate Premo	1 75	2 00	2 00		
Star Premo	1 75		2 00		
Pony Premos Nos. 1, 2, 3 and 4			2 00	2 50	
Pony Premos Nos. 6 and 7			3 00	4 00	5 00
Premo Supreme			4 50	6 00	7 50
View Cameras	5 x 7	6½ x 8½	8 x 10	11 x 14	14 x 17
R. O. C. View	\$3 00	\$4 00	\$5 00	\$	\$
Empire State	4 00	5 00	6 00	8 00	10 00
Premo View		7 00	8 00		

SHUTTERS AND LENSES

B. & L. AUTOMATIC SHUTTER

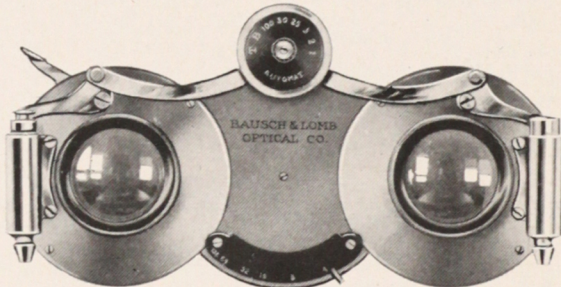
This shutter is perfectly automatic in action, working for time, instantaneous and retarded exposures without previous setting. The Automatic is operated by either bulb attachment or finger release. It is a very compact shutter and for exposures of 1 , $\frac{1}{2}$, $\frac{1}{5}$, $\frac{1}{25}$, $\frac{1}{50}$, $\frac{1}{100}$ seconds, works with a constant accuracy hitherto unobtainable. An Iris diaphragm is also supplied and the stops are graduated according to the universal system.



No. 1 for 5	x 7 and smaller	\$10 00
No. 2 for $6\frac{1}{2}$	x $8\frac{1}{2}$	12 00
No. 3 for 8	x 10	14 00

B. & L. STEREO AUTOMATIC SHUTTER

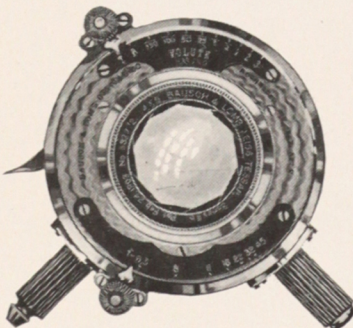
This shutter is in reality a double automatic, made up by a combination of two automatic shutters, both working in unison. It is constructed so as to readily accommodate any desirable Stereo lens.



Price, \$20 00

B. & L. VOLUTE SHUTTER

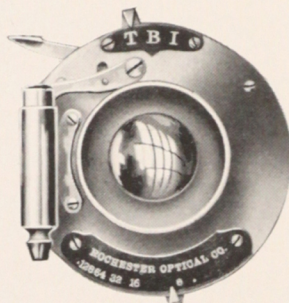
The Volute is the highest type of the diaphragm shutter, and for all around amateur work is the finest shutter made for hand camera use. The No. 1 Volute is graduated for speeds from Time to $\frac{1}{150}$ second; the No. 2, from Time to $\frac{1}{100}$, and the No. 3, from Time to $\frac{1}{75}$.



No. 1 for 5	x 7 and smaller	\$18 00
No. 2 for $6\frac{1}{2}$	x $8\frac{1}{2}$	20 00
No. 3 for 8	x 10	22 00

SINGLE VALVE AUTOMATIC SHUTTER

This is a first rate automatic shutter, made on similar lines and with the same care as the double valve automatic. While it does not have the retarded speeds of the double valve shutter, it is fully as accurate and reliable for Time, Bulb and Instantaneous exposures. This is a very handsome model, is operated by either bulb or finger release and has Iris diaphragm. It is exceedingly compact in form and may be fitted to the smallest boxes.



No. 1 for $3\frac{1}{4} \times 4\frac{1}{4}$	- - -	\$5 00
No. 2 for $3\frac{1}{4} \times 5\frac{1}{2}$, 4×5 and 5×7	- - -	6 00

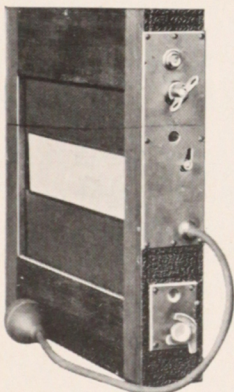
THE UNICUM SHUTTER

The Unicum is the most satisfactory "set" shutter ever manufactured. It is operated by either bulb or finger release and works with Bulb, Time and Instantaneous exposures, as well as retarded speeds of 1 , $\frac{1}{2}$, $\frac{1}{5}$, $\frac{1}{25}$ and $\frac{1}{50}$ seconds.

No. 1 for 5×7 and smaller	- - - - -	\$ 6 00
No. 2 for $6\frac{1}{2} \times 8\frac{1}{2}$	- - - - -	8 00
No. 3 for 8×10	- - - - -	10 00

FOCAL-PLANE SHUTTER

The Focal-Plane Shutter illustrated below is an entirely new type designed on correct scientific and mechanical principles. The curtain, instead of being adjustable, is provided with a series of slots of varying widths and the mechanical control is entirely on the right hand side of the shutter; a half turn of the key setting it for any exposure and the method of changing from largest to smallest aperture being very conveniently arranged. The construction obviates any possibility of a variation in the necessary aperture and indicates positively which aperture is set ready for release. In addition to this, the curtain has an aperture the full width of the exposure opening, so that time exposures can be made without the slightest jar. The shutter is also provided with either pneumatic bulb and tube or cable release.



4×5	-	\$22 00	$6\frac{1}{2} \times 8\frac{1}{2}$	-	\$27 00
5×7	-	24 00	8×10	-	31 00

B. & L.-ZEISS CONVERTIBLE PROTAR VII-A

For use in hand cameras this lens is especially recommended, excelling not only in optical qualities, but in its adaptability to the limited space for a lens allowed in such instruments. Convertible anastigmats are doublet lenses. They are made up of eight elementary lenses arranged in pairs, two pairs in each system, and their covering and defining powers are faultless. This lens is convertible into three lenses of different foci and angle.

No.	Size of Plate Covered with Full Aperture	Focus of Front Lens	Focus of Back Lens	Combined Focus	Speed	Price
2	3¼ x 4¼	8¾ in.	7 $\frac{3}{16}$ in.	4½ in.	<i>f</i> : 7	\$ 54 50
3	4 x 5	11 $\frac{3}{16}$ in.	7 $\frac{3}{16}$ in.	5 in.	<i>f</i> : 7-7	59 50
5	4¼ x 6½	11 $\frac{3}{16}$ in.	8¾ in.	5⅝ in.	<i>f</i> : 7	63 00
8	5 x 7	13¾ in.	11 $\frac{3}{16}$ in.	7 in.	<i>f</i> : 7	75 00
9	5 x 8	16 in.	11 $\frac{3}{16}$ in.	7½ in.	<i>f</i> : 7-7	87 50
11	6½ x 8½	16 in.	13¾ in.	8½ in.	<i>f</i> : 7	94 50
12	6½ x 8½	18⅞ in.	13¾ in.	9⅞ in.	<i>f</i> : 7-7	115 50
17	8 x 10	23⅞ in.	18⅞ in.	11⅞ in.	<i>f</i> : 7	167 50

B. & L.-ZEISS TESSAR LENS—SERIES II-B, *f*:6-3

The Tessar is an unsymmetrical doublet of four very thin lenses. The image which it produces possesses a sharpness hitherto unattainable with such great aperture and rapidity. The corrections are perfect, the accuracy and precision of the image extending over a field of great angular area.

No.	Size of Plate	Equivalent Focus	Diameter	Price
4	3¼ x 4¼	5⅜ in.	1 $\frac{5}{16}$ in.	\$ 33 50
5	4 x 5	6⅞ in.	1 $\frac{1}{16}$ in.	40 00
6	5 x 7	8¼ in.	1 $\frac{7}{16}$ in.	59 50
8	6½ x 8½	12 in.	2⅛ in.	118 50
9	8 x 10	14⅜ in.	2 $\frac{7}{16}$ in.	154 00

B. & L.-ZEISS PROTAR LENS—SERIES V, *f*:18

The B. & L.-Zeiss Protar, Series V, is designed for extreme wide-angle work. This lens embraces a field of 110 degrees.

No.	Size	Equivalent Focus	Price
1	4¼ x 6½	3⅜ in.	\$22 50
2	5 x 7	4⅜ in.	22 50
3	6½ x 8½	5 $\frac{9}{16}$ in.	28 00
4	8 x 10	7 $\frac{3}{16}$ in.	35 00

COOKE SERIES III, $f: 6.5$

No.	With Full Apertures to Cover Plates	Equivalent Focus	Price
1	$2\frac{1}{4}$ x $2\frac{1}{4}$	3 in.	\$ 27 50
2	$3\frac{1}{4}$ x $3\frac{1}{4}$	$4\frac{1}{4}$ in.	32 00
3	$3\frac{1}{4}$ x $4\frac{1}{4}$	5 in.	35 00
4	4 x 5	6 in.	39 50
5	5 x 7	$7\frac{1}{2}$ in.	48 50
6	5 x 8	$8\frac{1}{4}$ in.	53 00
7	$6\frac{1}{2}$ x $8\frac{1}{2}$	11 in.	91 00
8	8 x 10	13 in.	130 00

GOERZ SERIES III LENS, $f:6.8$

No.	Size of Plate	Equivalent Focus	Price
0	$3\frac{1}{4}$ x $4\frac{1}{4}$	$4\frac{3}{4}$ in.	\$ 37 50
1	4 x 5	6 in.	45 00
2	$4\frac{3}{4}$ x $6\frac{1}{2}$	7 in.	51 50
3	5 x 8	$8\frac{1}{4}$ in.	62 50
4	$6\frac{1}{2}$ x $8\frac{1}{2}$	$9\frac{1}{2}$ in.	75 50
6	8 x 10	12 in.	107 00

PLANATOGRAPH LENS— $f:8$

This lens forms a part of the regular equipment for many of our cameras. It is the best lens obtainable outside of the Anastigmat. This lens is furnished in cells only.

Size	Diameter of Lens	Equivalent Focus	Price
$3\frac{1}{4}$ x $4\frac{1}{4}$	1 in.	6 in.	\$12 00
4 x 5	1 in.	$6\frac{1}{4}$ in.	12 00
5 x 7	$1\frac{1}{8}$ in.	8 in.	14 00
$6\frac{1}{2}$ x $8\frac{1}{2}$	$1\frac{1}{2}$ in.	11 in.	17 00
8 x 10	$1\frac{3}{4}$ in.	13 in.	20 00

SYMMETRICAL WIDE-ANGLE LENS

This is an excellent wide-angle lens at a moderate price, having an angle of about 80 degrees.

No.	Size	Equivalent Focus	Price In Cells Only
1	4 x 5	$3\frac{1}{2}$ in.	\$ 5 00
2	5 x 7	5 in.	7 50
3	$6\frac{1}{2}$ x $8\frac{1}{2}$	$6\frac{1}{2}$ in.	12 00
4	8 x 10	8 in.	15 00

MISCELLANEOUS

Blotting Paper, 19x24, per doz.	\$1 00	Reversible Backs:	
Bulbs and Tubes	35	For View Cameras, 5 x 7	\$7 50
Developing Powders, R. O. C.		For View Cameras, 6 1/2 x 8 1/2	9 00
Per Package of 12 Powders	50	For View Cameras, 8 x 10	11 00
Focusing Cloth, Gossamer	50	For View Cameras, 11 x 14	14 00
Glass for Univer. Ruby Lamp, ea.	10	Screws for Tripod Head:	
Glass, Measuring, 4 ounce	15	Nos. 1, 2 and 3	25
Ground Glass Frames for View		Nos. 4 and 5	40
Cameras:		Screws for Tripod Leg:	
5 x 7	75	Nos. 1, 2 and 3	15
6 1/2 x 8 1/2	1 00	Nos. 4 and 5	25
8 x 10	1 25	Milled Head Screws for Cameras:	
Ground Glass:		1/2 inch and smaller	15
4 x 5	15	Larger than 1/2 inch	25
5 x 7	20	Shoulder Straps, Black:	
6 1/2 x 8 1/2	25	1/2 x 52 in. with Snaps and	
8 x 10	30	Buckles	25
Lens Boards:		5/8 x 52 in. with Snaps and	
For Premos, up to 5 x 7	35	Buckles	30
For Premos, larger	50	1/2 x 66 in. with Buckle	30
For Stereo Cameras	50	5/8 x 74 in. with Buckle	35
For View Cameras, up to 8x10	50	Tan Straps for View Cases, with	
For View Cameras, larger	70	Buckle. Specify Style and	
Orange or Ruby Fabric, per sq. yd.	60	Size of Camera when order-	
Orange Paper, per dozen	25	ing.	
Premo View Finder	1 50	34, 40 and 44 in.	25
Premo Spirit Level	40	52, 60 and 66 in.	30
Paste for Mounting Prints:		Tubing per foot	10
3 oz. tube	15		

TERMS

Prices as listed in this catalogue are net excepting to dealers.

When ordering give shipping directions, whether by freight, express or otherwise. If not stated we use our discretion.

All orders for shipments C. O. D. must be accompanied with sufficient remittance to cover transportation both ways.

Mail orders must be accompanied with remittance for full amount of purchase, including postage, or we will ship by express.

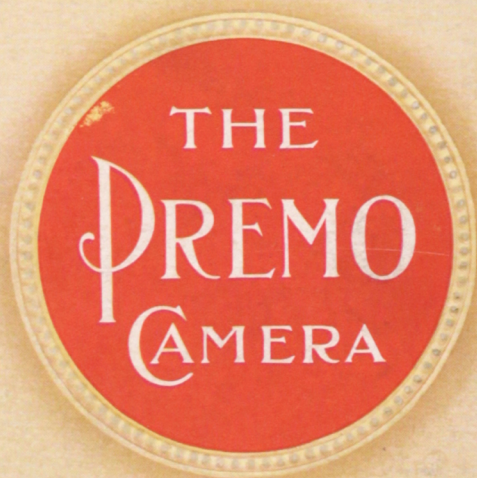
Under no circumstances are we responsible for loss of mail packages. We suggest for safety that all such packages be ordered registered.

All goods are carefully packed and we cannot be held responsible for any damage during transit.

Orders for special parts or for goods not listed in this catalogue will be filled on customer's responsibility only. Under no circumstances can we permit the return of such goods for credit.

All prices are F. O. B. at Rochester, N. Y.

ROCHESTER OPTICAL DIVISION, EASTMAN KODAK CO.
45 SOUTH STREET ROCHESTER, N. Y.



FILM
PLATES

OSGOOD PHOTO SUPPLY CO.

330 Main St.

Galesburg, Ill.