



PREMO

## *Keep a Record of the Summer's Pleasures with a Premo*

THERE are two systems of film photography—the roll and the Premo Film Pack. Each has its advantages, and it is the purpose of this little booklet to point out particularly the advantages of the Premo Cameras, all of which, in the most popular amateur sizes, take the Premo Film Pack.

The Film Premo Cameras are exceedingly simple to load and operate, and the film pack method of changing exposures makes it possible to make these cameras very light and compact.

The Premo Plate Cameras have been known as the very best in plate camera construction, for upwards of thirty years. The fact that these cameras can be easily loaded with the film pack, provides the amateur with a reliable instrument, having the important advantage of ground glass focusing and other plate camera features, in connection with the light weight and conveniences of film.

The removal of one or more films for development without the need of waiting until twelve are exposed, is another important convenience of the Premo Cameras, which will appeal to many.

All Premos are fitted with carefully tested lenses and reliable automatic shutters. Film Pack Films are from the same stock as the Eastman Non-Curling. These two features are assurances of good pictures.

ROCHESTER OPTICAL DIVISION  
EASTMAN KODAK COMPANY  
ROCHESTER, N. Y.

## The Premo Film Pack

THE purely Film Premos, pages 4 to 11, are loaded and unloaded in broad daylight with the Premo Film Pack.

Just open back of camera—drop in film pack—close back—and the camera is loaded.



To prepare for the first exposure, simply pull out from the pack the paper tab marked "Safety Cover." Then to change each film for successive exposures, merely pull out successive tabs. The entire operation of changing the twelve films can be done in as many seconds.

And with the film pack one or more films can be removed at any time for tray or tank development, for which purpose, of course, the pack must be taken to the dark room. Then open it at the bottom, take out the exposed film or films, close it up again and replace the pack for the remaining exposures.



## The Premo Film Pack Adapter

THE Premo Film Pack Adapter will convert any Premo plate camera into a daylight loading film camera. It has the general size and appearance of a plate holder, but has a hinged back which can be easily opened, the pack dropped in place, back closed, and the adapter then inserted in the plate camera just as an ordinary plate holder is.

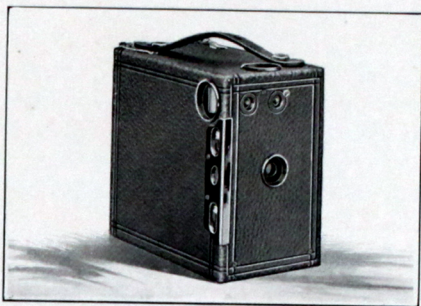


To make exposures the slide is withdrawn, the "safety cover" pulled out and the film pack operated for successive exposures just as in film cameras, by merely pulling out successive tabs.

Then at any time the slide may be reinserted, the adapter removed and the subject focused on the ground glass by precisely the same method you would follow in using glass plates.



## Premo Juniors



**T**HERE is no more enjoyable nor educational recreation for the young people than photography, and one of these little cameras will provide any boy or girl with a practical, inexpensive, simple means of making good pictures.

And these are no fragile toys, but substantially built cameras, which are being used by thousands of grown-up people, who prefer a camera of the fixed focus type—the simplest to use of all cameras.

As the following description will show, there is nothing in the entire process of picture-taking with a Premo Junior which anybody cannot easily perform without previous

knowledge of photography. No focusing, no estimating of distance is necessary.

To load, open back of camera, drop in Premo Film Pack, close the back, and all is ready. Set the shutter for time or instantaneous exposure as required by the subject. This is done by merely moving a lever up or down.

Then compose subject in finder, press a lever and the exposure is made. To change films for successive exposures, pull out successive film pack tabs. See page 2.

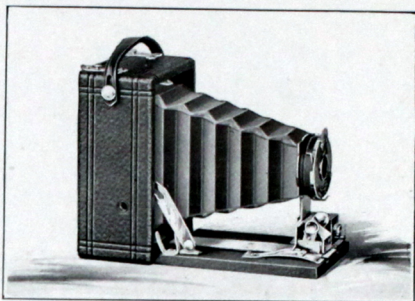
The Premo Jr. No. 0 is slightly different in appearance and construction from the others, but the principle is exactly the same, and the results are just as dependable.

#### PRICES AND SPECIFICATIONS

	No. 0 $1\frac{3}{4} \times 2\frac{3}{4}$	No. 1 $2\frac{1}{4} \times 3\frac{1}{4}$	No. 1A $2\frac{1}{2} \times 4\frac{1}{4}$	No. 3 $3\frac{1}{4} \times 4\frac{1}{4}$	No. 4 $4 \times 5$
Premo Junior . . .	<b>\$1.50</b>	<b>\$2.00</b>	<b>\$3.00</b>	<b>\$4.00</b>	<b>\$5.00</b>
Carrying Case . . .	.60	.75	.85	1.10	1.25
Premo Film Pack (12 exposures) . .	.25	.40	.50	.70	.90
Premo Portrait At- tachment . . . .		.50	.50	.50	.50

Capacity, 12 exposures without reloading. Size of Camera, No. 0,  $2\frac{1}{4} \times 3\frac{5}{8} \times 5\frac{1}{4}$  in.; No. 1,  $3\frac{1}{8} \times 4\frac{1}{2} \times 5\frac{3}{4}$  in.; No. 1A,  $3\frac{1}{2} \times 5\frac{1}{2} \times 5\frac{5}{8}$  in.; No. 3,  $4 \times 5\frac{1}{2} \times 5\frac{3}{4}$  in.; No. 4,  $4\frac{3}{4} \times 6\frac{1}{4} \times 6\frac{1}{2}$  in. Weight, No. 0, 7 ounces; No. 1, 12 ounces; No. 1A, 14 ounces; No. 3, 20 ounces; No. 4, 25 ounces. Shutters, Automatic with diaphragm stops. Lens, Single Achromatic. Two tripod sockets and two finders.

## Premoettes Nos. 1 & 1A



**H**ERE are two little cameras making pictures of good size, either of which one can easily carry around in the pocket without noticing it.

And they make splendid pictures—pictures which compare favorably with those made by the largest cameras, pictures of good size for snap shot work and amateur portraiture—of excellent quality for enlargement.

The Premoettes offer all that ease of loading and operation which characterize all Premos taking the Premo Film Pack. Just open the back in any light to load, drop in a Premo Film Pack, close the back



and it's done. Films are changed for successive exposures as described in the description of the film pack, and a special, inexpensive Premo Film Pack Tank is provided for the development of Premoette No. 1 film. The lens is a single meniscus fitted to automatic shutter working for time, bulb and instantaneous exposures, made especially for the Premoette.

The two models differ only in the size of pictures which they make, and both cameras are substantially constructed, have lasting seal grain coverings and nicked fittings.

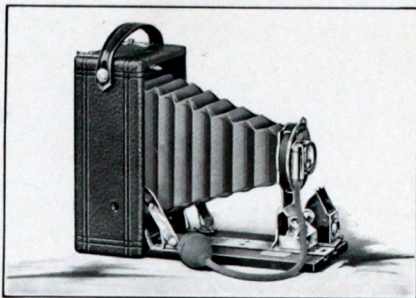
Premoettes are especially recommended for the use of the novice because of their dainty appearance, small size and simple operation.

#### PRICES AND SPECIFICATIONS

	No. 1	No. 1A
Premoette with Meniscus Lens and	$2\frac{1}{4} \times 3\frac{1}{4}$	$2\frac{1}{2} \times 4\frac{1}{4}$
Premoette Shutter . . . . .	<b>\$5.00</b>	<b>\$6.00</b>
Carrying Case . . . . .	.75	.85
Premo Film Pack (12 exposures)	.40	.50
Premo Portrait Attachment . . .	.50	.50

Capacity, 12 film exposures. Dimensions, No. 1,  $1\frac{7}{8} \times 3\frac{3}{8} \times 4\frac{1}{2}$  in.; No. 1A,  $2\frac{1}{8} \times 3\frac{3}{8} \times 5\frac{1}{2}$  in. Weight, No. 1, 11 ounces; No. 1A, 16 ounces. Lens, No. 1, Meniscus; No. 1A, Single Achromatic. Shutter, Premoette Automatic for time, bulb, and instantaneous exposures. Two tripod sockets, reversible finder, and automatic standard clamp.

## Premoette Special



**H**ERE'S one of the most popular models of our entire line, having been designed to meet the demand for a dainty, little instrument of the Premoette type but suitable for high grade lens and shutter equipments. It loads and unloads in daylight with that ease and convenience which characterize all Premos taking the Premo Film Pack.

And for those who desire the very finest equipment in so diminutive a camera, provision is made for fitting anastigmat lenses and high speed compound shutters, in which case the camera box is made just a trifle thicker. Such an equipment

permits an exceptionally wide latitude of work for so small a pocket camera, and it should be remembered that Premoette pictures can easily be enlarged up to almost any size.

The finish and general equipment of the Premoette Special are fully in keeping with the high grade of work for which it is designed. The covering is of seal grain leather, the shutter and metal parts are highly nicked, and the bellows is of selected red leather.

Like the regular Premoettes, these two models differ only in the size of pictures which they make. Films for the No. 1 may be developed in the No. 1 Premo Film Pack Tank, the No. 1A in the No. 2 Tank.

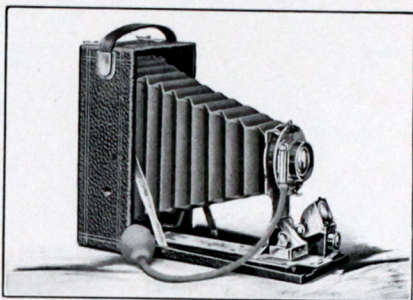
#### PRICES AND SPECIFICATIONS

	No. 1	No. 1A
Premoette Special with R. R. Lens and S. V. Auto. Shutter . . .	$2\frac{1}{4} \times 3\frac{1}{4}$ \$ 9.00	$2\frac{1}{2} \times 4\frac{1}{4}$ \$10.00
Premoette Special with Zeiss Kodak Anastigmat Lens <i>f</i> .6.3 and Compound Shutter . . .	40.25	41.30
Premoette Special Carrying Case, (sole leather) . . .	1.00	1.25
Premo Film Pack (12 exposures) .	.40	.50
Premo Portrait Attachment . . .	.50	.50

Capacity, 12 film exposures. Dimensions, No. 1 Special,  $2\frac{5}{8} \times 3\frac{1}{4} \times 4\frac{3}{4}$  in.; No. 1A Special,  $2\frac{1}{8} \times 3\frac{5}{8} \times 5\frac{1}{2}$  in. Weight, No. 1 Special, 11 ounces; No. 1A Special, 16 ounces. Lens, Rapid Rectilinear. Shutter, Single Valve Automatic. Two tripod sockets, reversible finder, and automatic standard clamp.



## Film Premo No. 1



**T**O one who desires a purely film camera, slight investigation will reveal the reason for the general popularity of these models.

In size and weight Film Premos are much smaller and lighter than any other cameras for the most popular sizes of amateur pictures.

They are fitted with excellent rapid rectilinear lenses—each one carefully tested and amply efficient for all ordinary photographic purposes. Shutters are single valve automatic, working for time, bulb, and instantaneous exposure by either bulb or finger release.

And then the whole process of taking pictures with a Film Premo

is so simple that the beginner can make good pictures from the start.

To load, just open back, drop in film pack—close back, and it is done. To expose, open camera, pull out a black paper, press the bulb and the exposure is made. These two operations take even less time than it takes to tell of them. After the exposures have been made, the operator has the choice of developing his films either by tray or the surer and more convenient tank system.

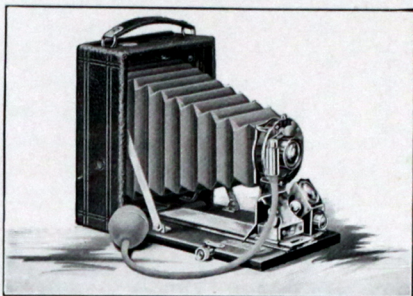
Film Premos No. 1 are very attractive in appearance; they are made of seasoned wood, with front and back panel of aluminum, covered with seal grain leather, and metal parts are beautifully nickered.

#### PRICES AND SPECIFICATIONS

Film Premo No. 1, with R. R. Lens and Single Valve Auto. Shutter	3½ x 4½	3 x 5½	4 x 5	5 x 7
Sole Leather Carrying Case	\$10.00	\$12.50	\$12.50	\$16.00
Premo Film Pack (12 exposures)	1.25	1.50	1.50	2.25
Premo Portrait Attachment	.70	.75	.90	1.60
	.50	.50	.50	.50

Capacity, 12 film exposures. Box, Mahogany. Bed, Aluminum. Dimensions, 3½ x 4½, 2½ x 4 x 5½ in.; 3 x 5½, 2½ x 4 x 6¾ in.; 4 x 5, 2½ x 4¾ x 6 in.; 5 x 7, 2½ x 5¾ x 8½ in. Weight, 3½ x 4½, 18 ozs.; 3 x 5½, 20 ozs.; 4 x 5, 20 ozs.; 5 x 7, 46 ozs. Lens, Rapid Rectilinear. Shutter, Single Valve Automatic. Tripod Sockets, two. Finder, reversible brilliant. Automatic Standard Clamp.

## Pocket Premo C



**T**HE Pocket Premo C possesses two decided advantages. It can be loaded with plates by means of the ordinary double plate holder — or it can be just as easily loaded with films by means of the Premo Film Pack Adapter, as described on page 3.

Then it has a ground glass upon which each subject may be focused whether films or plates are used, and these important features are combined in a camera as light and compact as a purely film camera.

And the Pocket Premo C has still other excellent features. It has a rack and pinion attachment for convenient focusing when the



ground glass is used. It has accurate focusing scale and reversible brilliant finder for use when the ground glass is not employed, and has two tripod sockets.

The shutter is single valve automatic, working with bulb or finger release, and the lens is a rapid rectilinear, each one carefully tested before being sent out.

The camera is handsomely finished, covering is genuine leather, and metal parts are highly nickeled.

With all these advantages the prices are very moderate, and for one who wishes to get a very portable and reliable outfit suitable for all kinds of general amateur work, it is an excellent value.

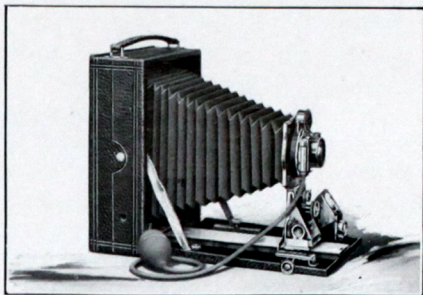
#### PRICES AND SPECIFICATIONS

Pocket Premo C with R. R. Lens and S. V. Auto. Shutter and Plate Holder . . . . .	3¼ x 4¼	3 x 5¼
	<b>\$12.00</b>	<b>\$15.00</b>
Double Plate Holder . . . . .	.80	1.00
Sole Leather Carrying Case . . . . .	1.50	1.75
Premo Film Pack Adapter . . . . .	1.00	1.50
Premo Film Pack (12 exposures) . . . . .	.70	.75
Premo Portrait Attachment . . . . .	.50	.50

NOTE—The 3 x 5¼ size accommodates 3¼ x 5½ plate holders and dry plates.

Capacity, 12 film or 2 plate exposures. Box, Mahogany. Bed, Mahogany, with rack and pinion for focusing. Finder, Reversible, hooded brilliant. Tripod Sockets, two. Lens, Rapid Rectilinear. Shutter, S. V. Automatic. Dimensions, 3¼ x 4¼, 2 x 4 x 5¼ in., 3 x 5¼, 2¼ x 4½ x 6¾ in. Weight, 3¼ x 4¼, 21 ounces; 3 x 5¼, 27 ounces. Automatic Standard Clamp.

# Filmplate Premo



**E**QUIPPED to meet the most exacting requirements, as well as the average conditions which the amateur photographer will meet, this model is in many respects the most complete and satisfactory camera which can be had.

It is fitted with rising and sliding front and swing bed and it is regularly supplied with the best lens obtainable outside of the anastigmats, fitted to double valve automatic shutter.

With accurate focusing scale and brilliant finder, the Filmplate Premo is a splendid snap shot instrument. Whereas, for particular work, the ground glass is instantly available

for composition or focusing whether films or plates are being used.

And all these advantages are combined in a camera which can be carried around as easily as the most portable film camera, for the Filmplate Premo is fully as light and compact as the ordinary camera taking films exclusively.

The box is made of thoroughly seasoned wood, front bed of aluminum, all covered with selected leather of beautiful seal grain. Metal parts are highly nickeled.

#### PRICES AND SPECIFICATIONS

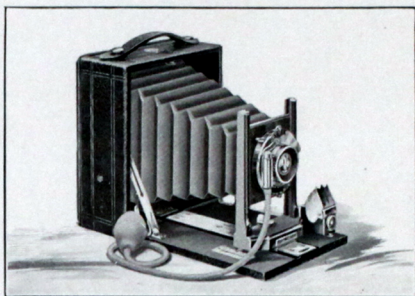
Filmplate Premo with Planatograph Lens and D.V. Auto. Shut- ter, Plate Holder and Film Pack Adapter	3 1/4 x 4 1/4	3 x 5 1/4	4 x 5	5 x 7
	\$24.00	\$26.50	\$26.50	\$35.00
With Zeiss Kodak An- astigmat f.6.3 and D. V. Auto. Shutter . . .	44.50	51.50	51.50	74.50
Ditto, with Compound Shutter . . . . .	52.80	62.30	62.30	85.05
Sole Leather Carrying Case . . . . .	1.75	2.00	2.00	2.50
Premo Film Pack (12 exposures) . . . . .	.70	.75	.90	1.60
Premo Portrait Attach- ment . . . . .	.50	.50	.50	.50

NOTE—The 3 x 5 1/4 size accommodates 3 1/4 x 5 1/2 plate holders and dry plates.

Capacity, 12 film or 2 plate exposures. Box, Mahogany. Bed, Aluminum. Rack and pinion for fine focusing. Front, rising and sliding. Finder, reversible brilliant. Tripod sockets, two. Lens, Planatograph. Shutter, Double Valve Automatic. Dimensions, 3 1/4 x 4 1/4, 2 x 4 1/8 x 5 3/8 in.; 3 x 5 1/4, 2 x 4 1/8 x 6 3/8 in.; 4 x 5, 2 1/8 x 4 7/8 x 6 1/8 in.; 5 x 7, 2 5/8 x 6 x 8 3/8 in. Weight, 3 1/4 x 4 1/4, 26 ozs.; 3 x 5 1/4, 30 ozs.; 4 x 5, 28 1/2 ozs.; 5 x 7, 48 ozs. Automatic Standard Clamp.



# Pony Premo No. 1



**A** VERY moderate priced camera, taking films or plates with equal facility and offering the ground glass focusing advantage with either.

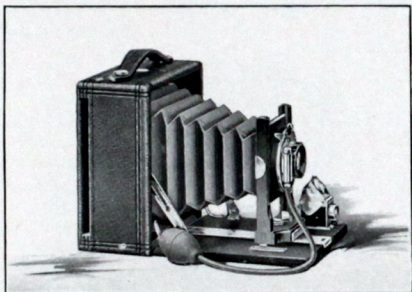
This is an excellent camera for the beginner, or one who cares to make only a small outlay, for it will make good pictures under all ordinary conditions which the amateur will meet.

## PRICES AND SPECIFICATIONS

Pony Premo No. 1, with R. R. Lens and S. V. Auto. Shutter, Carrying Case and Plate Holder . . . . .	4 x 5 \$12.00
Premo Film Pack Adapter . . . . .	1.50
Premo Film Pack (12 exposures) . . . . .	.90
Premo Portrait Attachment . . . . .	.50

Capacity, 12 film or 2 plate exposures. Box, Mahogany, leather covered. Front, rising and falling. Carrying Case, imitation leather with compartment for holders. Finder, reversible, hooded brilliant. Tripod Sockets, two. Lens, Rapid Rectilinear. Shutter, Single Valve Automatic. Dimensions,  $2\frac{1}{2} \times 5\frac{1}{4} \times 6\frac{1}{4}$  in. Weight, 24 ounces.

## Pony Premo No. 2



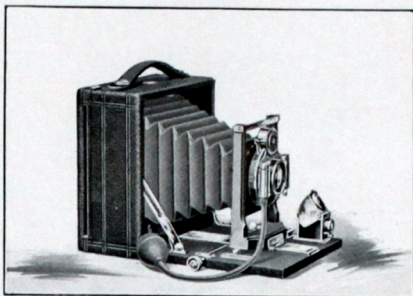
WITH the same type of lens and shutter, ground glass focusing feature and general characteristics of the preceding model, this camera has the additional advantage of our new spring catch reversible back, which can be removed and reversed in an instant.

### PRICES AND SPECIFICATIONS

Pony Premo No. 2, with R. R. Lens and S. V. Auto. Shutter, Carrying Case and Plate Holder . . . .	4 x 5	5 x 7
Premo Film Pack Adapter . . . .	1.50	2.50
Premo Film Pack (12 exposures) . . . .	.90	1.60
Premo Portrait Attachment . . . .	.50	.50

Capacity, 12 film or 2 plate exposures. Box, Mahogany, leather covered. Back, spring catch, reversible. Front, rising and falling Finder, hooded brilliant, reversible. Tripod Socket, one. Lens, Rapid Rectilinear. Shutter, Single Valve Automatic. Carrying Case, imitation leather with compartment for holders. Dimensions, 4 x 5, 2½ x 6 x 6 in.; 5 x 7, 3¼ x 8¼ x 8¼ in. Weight, 4 x 5, 28 ounces; 5 x 7, 50 ounces.

# Pony Premo No. 3



**P**ONY Premo No. 3 has all the advantages of its two predecessors and the additional ones of rack and pinion for easy, exact focusing, long bellows draw, and double valve automatic shutter. May be loaded with films or plates and offers the ground glass focusing feature with either.

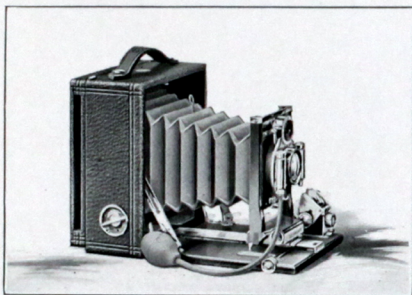
## PRICES AND SPECIFICATIONS

Pony Premo No. 3, with R. R. Lens	4 x 5	5 x 7
and D. V. Auto. Shutter, Carrying Case and Plate Holder . . . .	\$20.00	\$26.00
Premo Film Pack Adapter . . . .	1.50	2.50
Premo Film Pack (12 exposures) . .	.90	1.60
Premo Portrait Attachment . . . .	.50	.50

Capacity, 12 film or 2 plate exposures. Box, Mahogany, leather covered. Bed, Mahogany; rack and pinion attachment for fine focusing. Back, spring catch, reversible. Front, rising and falling. Finder, hooded brilliant, reversible. Tripod Socket, one. Lens, Rapid Rectilinear. Shutter, Double Valve Automatic. Carrying Case, sole leather, with compartment for holders. Dimensions, 4 x 5, 2½ x 6 x 6 in.; 5 x 7, 3¼ x 8¼ x 8¼ in. Weight, 4 x 5, 33 ounces; 5 x 7, 56 ounces.



# Pony Premo No. 4



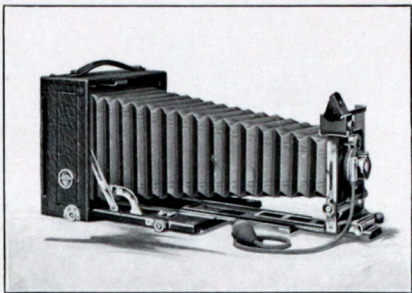
WITH all the good points of its three predecessors, this camera has additional equipment of swing back, automatic standard clamp, Planatograph lens and long bellows capacity.

## PRICES AND SPECIFICATIONS

Pony Premo No. 4, with Planatograph Lens and D. V. Auto. Shutter, Carrying Case and Plate Holder . .	4 x 5	5 x 7
With Zeiss Kodak Lens <i>f</i> .6.3 and D. V. Auto. Shutter . . . . .	\$24.00	\$32.00
Ditto, with Compound Shutter . . . . .	49.00	71.50
Premo Film Pack Adapter . . . . .	59.80	82.05
Premo Film Pack (12 exposures) . . . . .	1.50	2.50
Premo Portrait Attachment . . . . .	.90	1.60
	.50	.50

Capacity, 12 film or 2 plate exposures. Box, Mahogany, leather covered. Bed, Mahogany; rack and pinion for fine focusing. Back, spring catch, reversible. Swing, vertical. Front, rising and falling. Finder, hooded brilliant, reversible. Tripod Socket, one. Lens, Planatograph. Shutter, Double Valve Automatic. Carrying Case, sole leather, with compartment for holders. Bellows, red leather; draw, 4 x 5, 11½ in.; 5 x 7, 15½ in. Dimensions, 4 x 5, 2¾ x 6 x 6 in.; 5 x 7, 3¼ x 8¼ x 8¼ in. Weight, 4 x 5, 36 ounces; 5 x 7, 60 ounces. Automatic Standard Clamp.

## Pony Premos Nos. 6 & 7



**T**HE complete equipment, the long bellows draw, the variety of special patented features of these two Premos, suit them for photographic work of the most exacting character.

Yet there is no complication in operation. Beginners can easily make pictures with them, and the addition of a Premo Film Pack Adapter will convert either into a daylight loading film instrument while retaining the advantage of ground glass focusing.

The above illustration shows the No. 7. Price of each camera includes sole leather case and one double plate holder.

## PRICES AND SPECIFICATIONS

### Pony Premo No. 6

	4 x 5	5 x 7	6½ x 8½
Pony Premo No. 6, with Planatograph Lens and D. V. Auto. Shutter .	\$ 37.00	\$ 47.00	\$ 62.00
Do., with Zeiss Kodak Anastigmat Lens, f 6.3 .	62.00	86.50	111.50
Do., with Compound Sh.	72.80	97.05	124.20
Do., with B. & L. Zeiss Protar VIIa, and Auto. Shutter .	92.50	120.00	150.50
Do., with Compound Sh.	103.30	130.55	163.20
Premo Film Pack Adapter	1.50	2.50	
Premo Film Pack (12 ex.)	.90	1.60	

Capacity, 12 film or 2 plate exposures. Box, Mahogany. Bed, triple extension; rack and pinion actuated. Back, reversible. Swing, vertical. Front, rising and falling; rack and pinion actuated. Finder, hooded brilliant, reversible. Tripod Sockets, two. Case, sole leather, plush lined, with compartment for holders. Lens, Planatograph. Shutter, Double Valve Automatic. Bellows, red leather; draw 4 x 5, 14¾ in.; 5 x 7, 19½ in.; 6½ x 8½, 24 in. Dimensions, 4 x 5, 3½ x 6 x 6 in.; 5 x 7, 4 x 8¼ x 8¼ in.; 6½ x 8½, 5 x 10 x 10 in. Weight, 4 x 5, 3¼ lbs.; 5 x 7, 5¼ lbs.; 6½ x 8½, 8½ lbs.

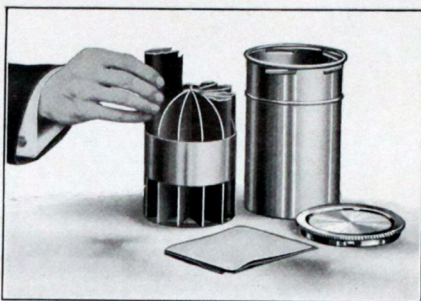
### Pony Premo No. 7

	4 x 5	5 x 7	6½ x 8½
Pony Premo No. 7, with Planatograph Lens and D. V. Auto. Shutter .	\$ 50.00	\$ 60.00	\$ 75.00
Do., with Zeiss Kodak Anastigmat Lens, f 6.3 .	75.00	99.50	124.50
Do., with Compound Sh.	85.80	110.05	137.20
Do., with B. & L. Zeiss Protar VIIa Lens and D. V. Auto. Shutter .	105.50	133.00	163.50
Do., with Compound Sh.	116.30	143.55	176.20
Premo Film Pack Adapter	1.50	2.50	
Premo Film Pack . . .	.90	1.60	

Capacity, 12 film or 2 plate exposures. Box, Mahogany. Bed, Mahogany, with triple extension. Back, reversible. Swing, vertical; rack and pinion actuated, with locking device. Front, rising and falling; rack and pinion actuated, with locking device. Finder, hooded brilliant, reversible. Tripod Sockets, two. Lens, Planatograph. Shutter, Double Valve Automatic. Carrying Case, sole leather, plush lined, with compartment for holders. Bellows, red leather; draw 4 x 5, 13¾ in.; 5 x 7, 19 in.; 6½ x 8½, 22 in. Dimensions, 4 x 5, 3½ x 6¼ x 6¼ in.; 5 x 7, 4 x 8½ x 8½ in.; 6½ x 8½, 5 x 9¾ x 9¾ in. Weight, 4 x 5, 3½ lbs.; 5 x 7, 5½ lbs.; 6½ x 8½, 8½ lbs.



# Premo Film Pack Tank



THE Premo Film Pack Tank assures the veriest beginner that every pack of films placed in the tank, where the simple directions are implicitly followed, will come out developed perfectly. No experience is required. It places the novice upon the same plane in development with the expert.

## PRICE

Premo Film Pack Tank No. 1, for 12 $1\frac{1}{4} \times 2\frac{3}{8}$ or $2\frac{1}{4} \times 3\frac{1}{4}$ films . . . . .	\$1.25
Do., No. 2, for 12 $2\frac{1}{2} \times 4\frac{1}{4}$ , $3\frac{1}{4} \times 4\frac{1}{4}$ , $3 \times 5\frac{1}{4}$ or $4 \times 5$ films . . . . .	3.50
Do., No. 3, for 6 $5 \times 7$ films . . . . .	4.00
Premo Tank Developing Powders, in packages of 6, No. 1 . . . . .	.20
In packages of 6, No. 2 . . . . .	.25
In packages of 6, No. 3 . . . . .	.35
Acid Fixing Powder, per 1 pound package . . . . .	.25
Do., per $\frac{1}{2}$ pound package . . . . .	.15
Do., per $\frac{1}{4}$ pound package . . . . .	.10

# Eastman Plate Tank

THIS produces the same good results as does the Premo Film Pack Tank, and consists of a metal solution cup with tightly fitting cover, a cage for holding twelve plates or less, and a loading block for loading the plates into the cage.



In the  $3\frac{1}{4} \times 4\frac{1}{4}$  and  $4 \times 5$  sizes, the cage of plates can be developed in the  $4 \times 5$  Premo Film Pack Tank.

## PRICE

Eastman Plate Tank, $4 \times 5$ or $3\frac{1}{4} \times 5\frac{1}{2}$ , including Solution Cup, Plate Cage and Loading Block	\$ 3.50
Ditto, $5 \times 7$	4.50
Ditto, $8 \times 10$	10.00
Kit for $4 \times 5$ Tank, to take $3\frac{1}{4} \times 4\frac{1}{4}$ plates	.50
Kit for $5 \times 7$ Tank, to take $4\frac{1}{4} \times 6\frac{1}{2}$ plates	.75
Ditto, for $4\frac{1}{4} \times 6\frac{1}{2}$ plates	.75
Extra Adjustable Kit for $8 \times 10$	1.00
Plate Cage and Loading Block for $4 \times 5$ and $3\frac{1}{4} \times 5\frac{1}{2}$ plates (can be used in $4 \times 5$ Premo Film Pack Tank)	1.75
Eastman Plate Tank Powders, for $4 \times 5$ tank, per package $\frac{1}{2}$ dozen	.20
Ditto, for $5 \times 7$ Tank, per package, $\frac{1}{2}$ dozen	.35
Ditto, for $8 \times 10$ Tank, per package, $\frac{1}{2}$ dozen	.50
Kodak Acid Fixing Powder, per 1 pound	.25

## The Kodak Metal Tripod

**A**N ideal hand camera tripod, combining rigidity with light weight and compactness. A revolving head with milled edges enables you to attach or tighten camera while the tripod is set up—an obvious advantage over the fixed head type.

The legs are made of brass tubing, each section telescoping into the section above it. The lower sections are nicked, the upper section is black enameled. A unique feature is that the construction permits the removing of any section for the replacing of a spring should one become inoperative through wear or accident.

When extended each section catches and holds firmly, but releases easily for closing. A permanently attached strap holds the legs in place when closed. Weight, 24 1/2 ounces.

	Open	Closed	Price
No. 1—Four sections	48 1/2 in.	15 in.	\$2.50
No. 2—Five sections	49 1/2 in.	13 1/2 in.	3.25

Leather carrying case for either style, \$1.50

## For More Information

The general Premo catalogue describes in more detail all goods listed in this little booklet, as well as other cameras, anastigmat lens equipments and accessories. We also have a special booklet, telling all about the Premo Film Pack System. Both are free at the dealer's or will be mailed postpaid to any address on request.

ROCHESTER OPTICAL DIVISION  
EASTMAN KODAK COMPANY  
ROCHESTER, N. Y.



H. B. BALTER  
HOOVERSVILLE, PA.