

A black and white photograph of a snowy mountain landscape. In the foreground, a wooden railing runs across the frame. The background features a steep, snow-covered mountain slope with a prominent, snow-laden evergreen tree in the center. The overall scene is serene and wintry.

*Leica*

**THE CAMERA  
OF MODERN TIMES**

**E. LEITZ, INC. NEW YORK, N.Y.**





*Cover picture:*  
—LEICAphoto by Dr. Paul Wolff —

Oskar Barnack, the man who created the LEICA.  
Self-portrait with f:4.5 135 mm. ELMAR;  
at 6 ft. distance,  $\frac{1}{2}$  sec. at full aperture.



# LEICA—

## THE CAMERA OF MODERN TIMES

### THE ORIGINAL AUTOFOCAL "CAT'S EYE" CANDID CAMERA

#### THE ULTRA-MODERN CAMERA

The little LEICA camera, which was designed and presented to the world shortly after the World War, is to-day Number One camera of our modern times. It was in its origin, and is still to-day, far ahead of the times, and therefore considered the Ultra-Modern photographic apparatus of to-day.

Many thousands of LEICAS are in active use in every part of the world and in the most diversified types of photographic activities. The LEICA is not merely a "camera"—it is far more than that, and this is proved by the acclaim it has been accorded since its introduction.

Because the LEICA is so unique, many LEICA Clubs are in existence all over the world. Note that these are not the usual "Camera Clubs", but LEICA Clubs, the members feeling that their cameras are quite out of the class of ordinary cameras—and right they are. For the first time in photography clubs have organized with names which represent an individual camera—the LEICA. Owners of other than LEICA cameras join Camera Clubs, but LEICA owners join LEICA Clubs.

Travelers, lecturers, news photographers, radio and screen stars, scientists, doctors, professors, engineers, and a host of other outstanding professional men and women select the LEICA as their personal camera not only for hobby purposes, but also for research and technical fields in which they are interested. Why?



Because the LEICA is the only camera which can perform successfully over such a wide range of activities. Indeed, there is good reason to consider the LEICA more than just a camera in the strict sense of the word.

Sooner or later YOU will own a LEICA—it will be your next camera, for as time goes on you will come to recognize its superior advantages over all similar existing cameras.

## FIRST IMPRESSIONS

Many people rely upon first impressions. This is not always conclusive, of course, but even under such a test the LEICA never fails to show its superiority. Its very appearance is that of a thoroughbred—beautifully streamlined body of smooth, satiny chrome or black lacquer, faced with a special rubberoid composition which withstands all wear and the elements indefinitely, and looks like leather. The knurled control knobs are conveniently situated for easy and speedy operation. Rounded corners make the camera fit snugly into the hands when in use. The noble-looking lens—a real aristocrat—mounted in a smart-looking chromium finished lens mount, completes the picture. But this is only a brief word-picture, and cannot even attempt to describe the true vision of the LEICA. It must be seen to be fully appreciated. You will be most favorably impressed with even your first glance.

While the first impression you get of the LEICA will be more than favorable, it will be interesting to know more about it. You will want to know, for example, that the model G LEICA boasts of an **extremely wide range of shutter speeds** from 1 full second to 1/1,000th of a second—speeds to more than accommodate every possible photographic condition which is likely to arise. The shutter, made of a special rubberized cloth material, withstands all climates, wears indefinitely, does not produce "flare" at the higher speeds, and is practically silent in operation. It is indeed a triumph of camera manufacture.



## POINTS TO REMEMBER ABOUT THE LEICA

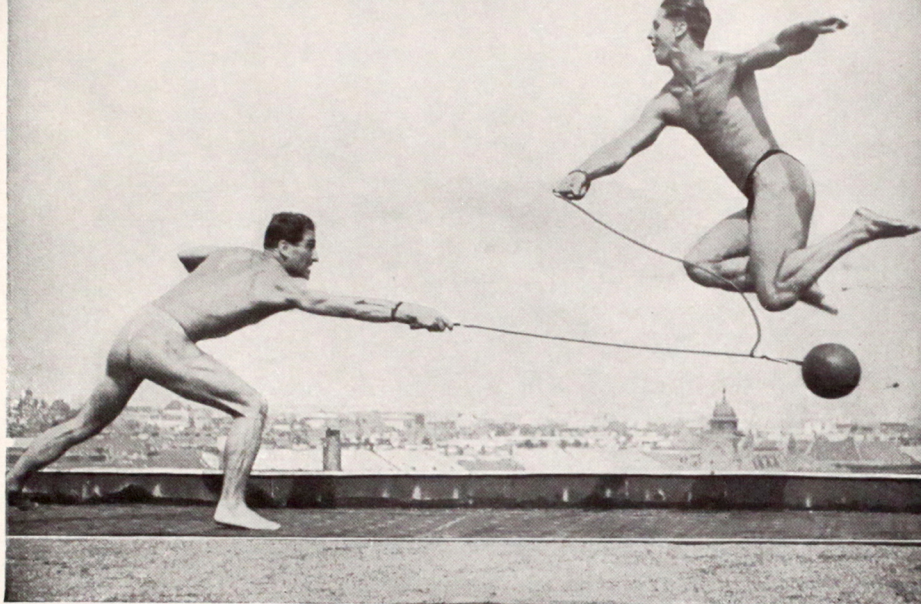
- • **The size** of the LEICA overall is:  $1\frac{1}{8} \times 2\frac{1}{8} \times 5\frac{1}{4}$  in. Small enough to be carried inconspicuously in the pocket or hand-bag.
- • **Weight**, complete: 18 oz.
- • **Shutter speeds**: controlled by only two dials, conveniently situated. Regular speed dial on top of camera indicates speeds from  $1/20$  to  $1/500$ th ( $1/1000$ th on model G) second. Slow speed dial on front of camera indicates speeds from 1 to  $1/20$ th second.
- • **All-metal construction** assures freedom from warping and breaking—a special alloy sees to it that the LEICA is as rugged as it is practical, yet as precision-made as the finest watch.
- • **Automatic focusing range finder**: The **Autofocal** feature of the automatic focusing range finder, which is built into the LEICA, means sharp, crispy-clear pictures every time. Each LEICA lens couples automatically with this device and assures freedom from fuzzy results.





- • **The interchangeability of lenses:** makes the LEICA instantly suitable for every kind of photography, is a highly-important feature. All lenses are standardized and screw into the LEICA lens mount interchangeably and positively. The screw-thread type of fitting was chosen after long consideration of bayonet and other types. Long-wear, positive action, and complete satisfaction are assured by the screw-thread mount, hence chosen for the LEICA. Two or three different cameras of conventional type would be required to do the work a single LEICA is capable of when equipped with a few interchangeable LEICA lenses. Besides, the LEICA operates far more economically.
  
- • **Simplicity:** the key-note of the LEICA. The design of the camera permits loading with the greatest of ease plus absolute assurity. You can't load the LEICA in any but the right way.
  
- • **The film material:** used in the LEICA is the standard 35mm cinema film stock, obtainable all over the world. The LEICA does not make movies, but individual negatives 1 x 1½ in. Up to thirty six exposures can be made with one loading. Standard 35mm film stock is to be had in a great variety of types of emulsion, hence opens up new avenues to LEICA owners, particularly those in specialized fields where special emulsions are demanded. Film material for the LEICA is put up in daylight loading and unloading cartridges, making it very easy for the LEICA owner to load and unload his camera. Film is likewise obtainable in bulk, viz. 30, 50, and 100-ft. rolls which can be cut into short sections for the LEICA in the darkroom. Because cinema film is so inexpensive, the LEICA owner can effect great economies.





—The LEICA “freezes” fast action—  
SUMMAR f:2, 50mm lens, stop 4.5, 1/1000 sec., Agfa  
Superpan Film.  
LEICAphoto by L. Ruebelt.

- • **Handling the LEICA:** a positive pleasure. The simplicity with which the controls work, plus their smooth, positive action are real treats, especially to those who have used other cameras and can therefore make comparisons. The shape of the camera proper permits the LEICA to nestle comfortably and steadily in the hands. Like lightning, pictures can be made almost as quickly as the mind conceives them, without removing the LEICA from its operating position in front of the eyes.
- • **Accessories:** play an important part, and it can easily be understood that the more than four-hundred accessories for the LEICA make it possible for it to be used in every photographic field. This does not mean that the LEICA owner will require all or even part of these many accessories, for a LEICA and one lens will be entirely satisfactory generally.



Additional equipment is essential, however, to all those who desire to delve into various photographic activities which require certain accessories. Sooner or later, the LEICA owner will find his work more enjoyable by the addition of a lens or two, several filters, a sunshade, exposure meter, developing tank, enlarger, etc. More about accessories will be found at the rear of this booklet.

## **INEXPENSIVE PHOTOGRAPHY**

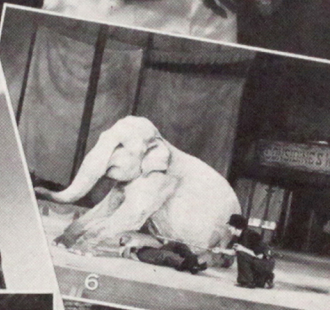
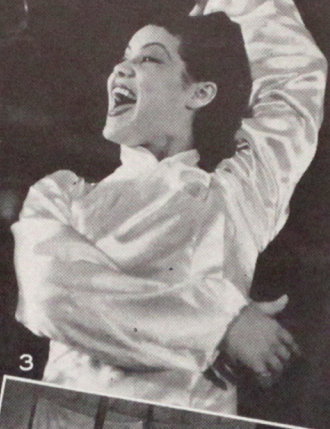
Everywhere in the world economy is an important factor, and this brings up a most interesting fact about the LEICA. LEICA photography is extremely inexpensive, for the small 35mm cinema film which is used costs but very little. Depending upon whether cartridges or bulk film is used, each negative costs only between  $\frac{1}{2}$  and 2 cents! Surely this is little enough to pay for a picture which may bring joy for years to come, or be a record of some monumental engineering or surgical task.

Some may point to the initial cost of the LEICA. But actually the initial cost is moderate when one considers the infinite workmanship and precision which goes into its manufacture. The LEICA is made by the world-famous Ernst Leitz Optical Works, makers of the finest microscopes and similar optical instruments. Surely quality here is never sacrificed for any consideration, and for this reason you get in the LEICA the most accurate, finest, and highly dependable photographic apparatus in the world. Once you own a LEICA, subsequent expenses cease. Operation costs are nothing as compared with those of the more conventional cameras. So it pays in the end to invest a little more on the camera in order to enjoy real economy in operation.

## **DIFFICULT PHOTOGRAPHY MADE EASY**

Certain types of photography are usually referred to as being "difficult". Pictures at night, of the stage show, the movie screen, in court-rooms, night clubs, photomicrography, stereo photography, aerial photography—these are usually conceded to be "difficult". They are—for the average camera, but not for the LEICA. The





1. Taking a bow—by June Berstad. . . . 2. Eleanor Powell in "Broadway Melody"—by Tom Evans, M. G. M. Studios. . . . 3. Radio Singer—by Rudolf H. Hoffmann. . . . 4. A scene from "Jumbo"—by Hans Kloss. . . . 5. Jack Benny at the microphone—by Tom Evans, M. G. M. Studios. . . . 6. Elephant trainer; scene from "Jumbo"—by Hans Kloss. . . . 7. Taken at "All the King's Horses"—by Lester-Pickett. . . . 8. Another study of Eleanor Powell in "Broadway Melody"—by Tom Evans, M. G. M. Studios. . . . 9. Chorus girls—by W. D. Morgan.







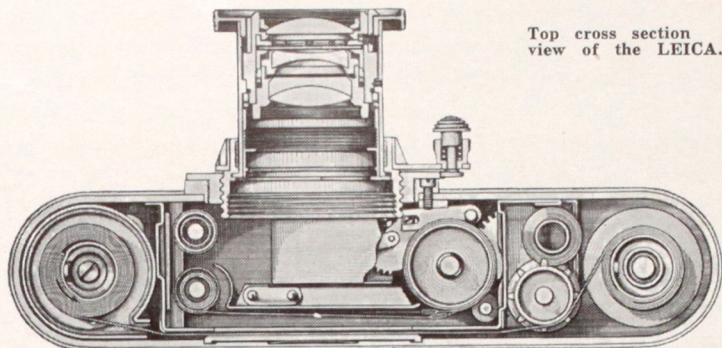
LEICA tackles the hardest job and accomplishes it not only with great success but the greatest of ease. That is another reason why the LEICA has become famous throughout the entire world—it is capable of doing things which are "difficult" with other cameras. With the LEICA, the word "difficult" is completely removed from all forms of photography.

Candid photography, admittedly one of the most thrilling and at the same time "tricky" forms of photography, is made simple by the use of a LEICA camera. In fact the LEICA'S superiority in this field has won for it the nick-name of "Cat's Eye LEICA". Many often refer to the LEICA as merely "the candid camera"—high praise indeed.

## EASE OF OPERATION

Who owns a LEICA for the first time is amazed at its simple operation. Because it is capable of such a wide variety of accomplishments, many seem to think that it necessarily follows that the camera must be difficult to handle and operate. Simplicity is the key-note of the LEICA, and by the very virtue of this simplicity, it is enabled to perform the wonders which have made it justly famous throughout the entire world. Even a child can learn to operate a LEICA successfully in a few minutes of instruction.

Because of the simplicity of the LEICA, it is capable of making many single exposures in rapid succession. News photographers are loud in their praise of this feature which permits them to make a series of sequence shots in a matter of seconds. News cameramen have covered an action assignment with several dozens of excellent negatives where their co-workers, equipped with the conventional news camera, have come back with only a few negatives. The advantage of being able to select from many pictures over only a few is so obvious that newspapers are rapidly equipping their photographic departments with LEICAS, in some cases exclusively.

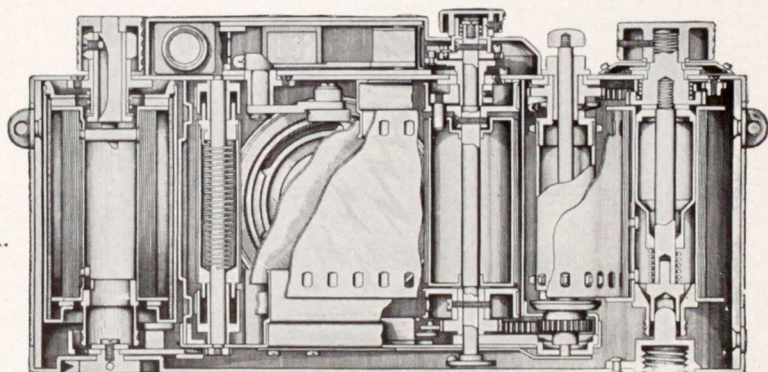


Top cross section  
view of the LEICA.

## MECHANISM OF THE LEICA

One need not be an engineer to appreciate the precision with which the parts of the LEICA are made and assembled. Each part is made of the best materials, carefully measured and fitted, resulting in a mechanism which is above reproach. Because such care is taken in the manufacture and assembly of the LEICA, it will last a life-time with only ordinary care.

In spite of the precision of the camera, it is designed to withstand rough usage. Its ruggedness is well-known to explorers and travelers who cannot always handle it with "kid gloves". Thus at one stroke precision and ruggedness, two most important features, are embodied in the LEICA.

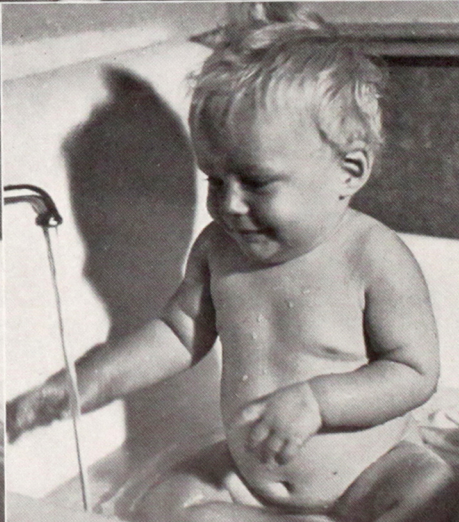
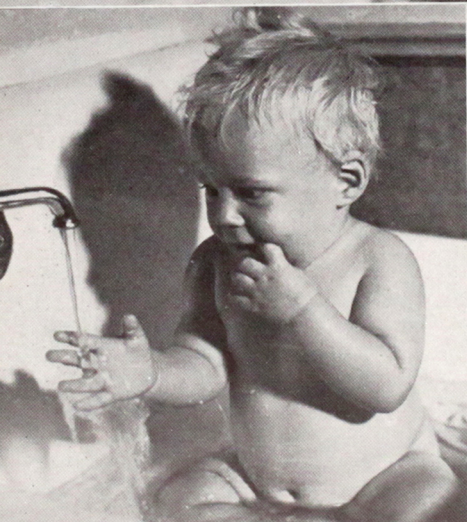
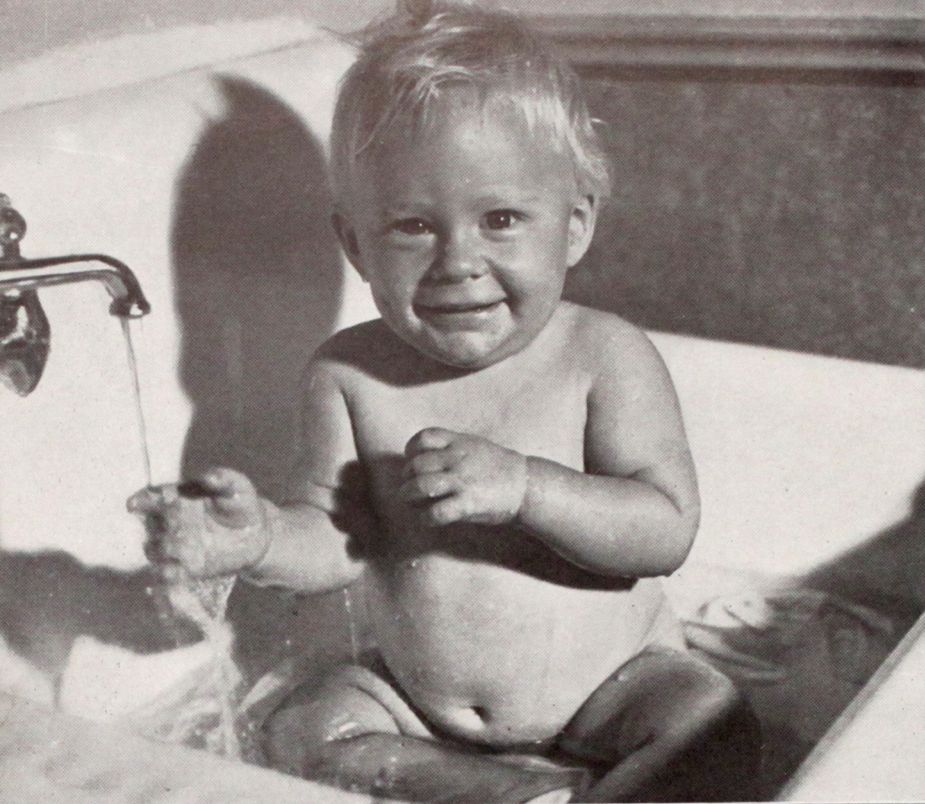


Back cross  
section  
view of  
the LEICA.



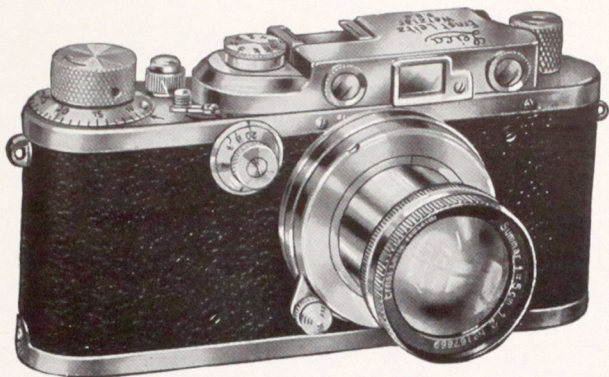








Model G LEICA  
with f:2, 50mm  
SUMMAR lens.



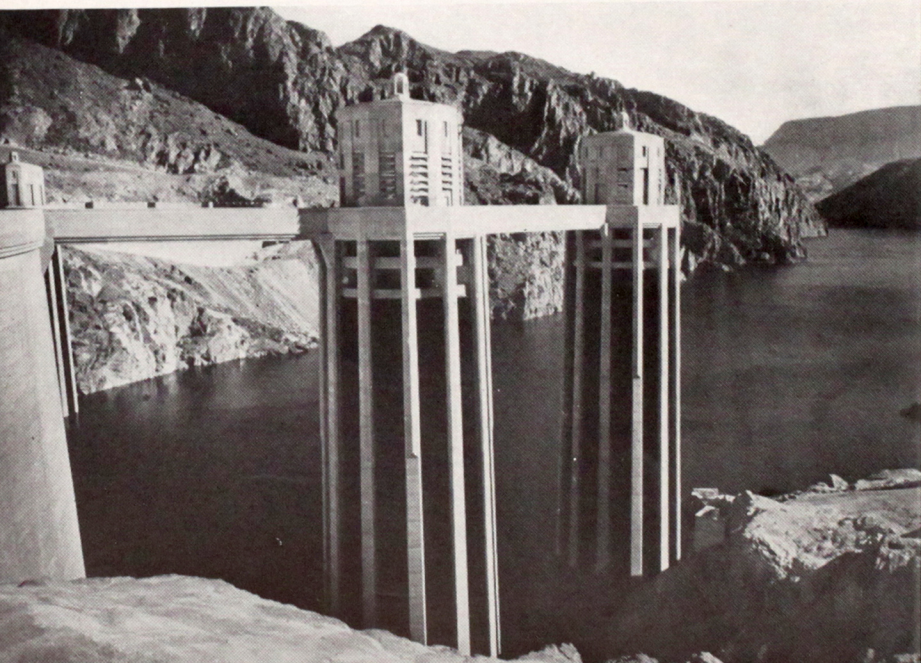
## THE LEICA MODEL G

The model G LEICA represents the ultimate in miniature cameras. Flexibility such as this model incorporates is not to be found in any other camera! For instance, shutter speeds in the model G are: 1 full second, 1/2, 1/4, 1/8, 1/20, 1/30, 1/40, 1/60, 1/100, 1/200, 1/500, and 1/1,000th second. The slow range of speeds (from 1 to 1/20th) permit a **continuous** range of speeds; for example, 1/6th of a second exposure can be secured by setting the dial between the 1/4 and 1/8 marks. Thus **any** desired speed can accurately be obtained in the slow range of speeds.

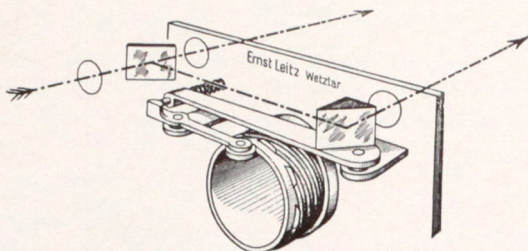
It will be noticed that each of the LEICA shutter speeds was determined only after careful thought and consideration. Each is a most important speed and has its definite place in photography. The standard speeds (1/20 to 1/1,000) are controlled by a shutter indicator dial located on the top of the LEICA camera, while the slow range speeds (1 to 1/20) are controlled by a secondary dial situated on the front of the camera adjacent to the lens and close to the top (see illustration). Thus the LEICA requires only **two** dials for **direct** setting within this vast speed range and no separate adjustment to individual speeds is required. In fact, to change from one speed to another is so simple that it can easily be done in the dark.

As the LEICA focal plane shutter travels horizontally from right to left (shutter release button to rewind knob), freedom from blur and distortion is assured. If the subject is traveling from left to right with such excessive speed that there is danger of blurring, the camera can be held upside down so as to cause the shutter to travel from left to right, thereby "stopping" the action.

The focal plane shutter of the LEICA camera is remarkably quiet, yet this silence is not secured at a sacrifice of shutter movement. The LEICA shutter moves across the aperture with speed and precision, yet silently. News, candid, stage, clinical, animal and nature photographers especially will find this a most useful feature of the LEICA.







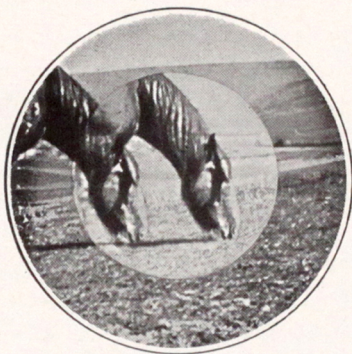
**Diagrammatical view of the LEICA built-in range finder.**

The famous built-in Autofocal range finder is worthy of some consideration. In the model G LEICA it is at its height of perfection. Basically, the device is designed on the principle of coincidence, in which a double image of the object to be photographed is seen. As the lens is focused, the twin images either separate or come together. When they are in perfect coincidence the lens is in perfect sharp focus. A collar, which is part of each LEICA lens, fits against a tiny roller which in turn actuates the prism of the range finder. The coupling between lens and range finder is completely automatic and the owner of the LEICA need not even think about it when changing lenses. The field seen in the range finder is considerably enlarged, being magnified by a  $1\frac{1}{2}X$  magnifier. The twin images are therefore clearly seen, even in unfavorable light. As some individuals like to have strong contrast, especially in brilliant sunlight, a special orange-red filter which fits over one of the range finder ports and imparts a deep color to one of the twin images, is available at extra cost. This is an accessory, desirable but not absolutely necessary. The accompanying schematic sketch shows clearly the entire range finder assembly and its method of operation.

Eyelets are built into the body of the camera at each top end which accommodate snap-hooks which in turn are attached to the special neck-strap supplied. This strap makes it possible to carry the camera suspended from either the neck or shoulder, leaving both hands free. A ten inch wire cable release is also supplied.

Briefly, the model G LEICA has everything with which to produce the finest of photographs. It is the most advanced and desirable camera in the entire camera field. We know that you will agree with this statement after you have examined it at your local photographic store.

**LEICA in focus . . . Large brilliant image seen in extremely accurate LEICA short base range finder.**



**LEICA out of focus . . . Double image is conveniently within the LEICA range finder field of view.**

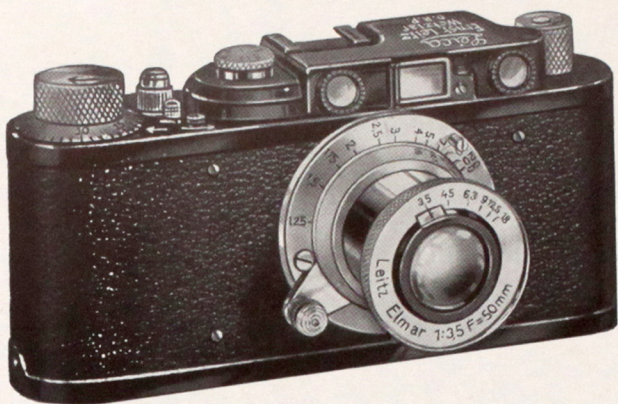
## THE LEICA MODEL F

The model F LEICA is very similar to the model G excepting that it lacks the 1/1,000th of a second shutter speed. It is available in black lacquer as well as chrome finish. Aside from these two differences, what has been said about the model G applies equally well to the model F LEICA.





**Model D LEICA**  
with f:3.5 50mm  
ELMAR lens.



## THE LEICA MODEL D

The model D LEICA is basically the same as the models F and G, but lacks a few of the latter's refinements. For instance, the model D's range of shutter speeds is from 1/20 to 1/500th of a second only. The range finder does not possess the 1½X magnifier in the eyepiece. For those who do not require the slow and extremely fast shutter speeds, the model D makes an ideal camera.

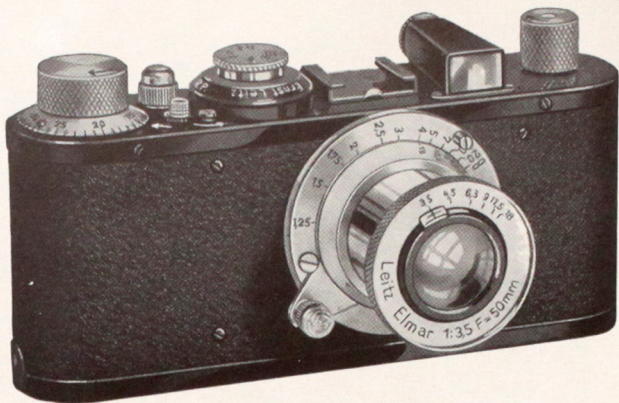


— Catch every fleeting expression with the LEICA —





**Model E LEICA**  
with f:3.5, 50mm  
ELMAR lens.



## THE LEICA MODEL E

The model E LEICA is often referred to as the "basic LEICA". It lacks some refinements, such as the built-in Autofocal range finder, slow and high shutter speeds, and neck-strap eyelets. A detachable horizontal range finder, however, is supplied. All LEICA models so far considered are basically the same in size, design, workmanship, and operation.

The model E LEICA is preferred by those who give first consideration to price or wish to use a camera exclusively for copying work and photomicrography where the range finder and wide selection of shutter speeds are not needed. The model E is of course standard in every respect, and therefore accommodates all LEICA lenses, filters, and other LEICA accessories. It is supplied in black lacquer finish only.

This model makes a strong appeal to the amateur who does not care to invest in a model D, F, or G at the present moment, but who at the same time does not wish to accept any substitute for genuine LEICA photography. Of especial interest to these is the fact that the model E may at any time be converted to the model D or F, thus modernizing the original "basic" LEICA. Here is a revolutionary idea which was originated by the manufacturers of

20

*Picture at right: — The LEICA for wide angle photography —*  
**HEKTOR f:6.3, 28mm lens, stop 6.3, 3 sec., Perutz**  
**Persenso Film.**

LEICAphoto by Augustus Wolfman.



the LEICA and which has proved a great success. Imagine, for example, your buying a four cylinder car and later on converting it into an eight cylinder—that is exactly what LEICA offers you when you purchase the model E, or D, respectively. The soundness of the basic principles of the LEICA make this possible, and it is definite proof of the genius and engineering skill which stands in back of it.

No matter which model LEICA you finally decide upon, be it the model G, F, D, or E, you are assured of the same standard quality, precision, and workmanship. No efforts are spared to make all models the finest cameras available, regardless of price.



## LEICA LENSES

The amazing battery of lenses for the LEICA is a chapter in itself, and is treated fully in booklet No. 1243 which may be had for the asking. A few words here, however, may not be amiss. There is a LEICA lens for each and every photographic purpose, as will be noted in the following list of lenses:

Lens	Focal Length	Max. Speed	Angle of View	Purpose
Hektor 50,290	28mm	f:6.3	76°	{ extreme wide-angle photography
Elmar 50,310	35mm	3.5	65°	{ normal wide-angle photography
Elmar 50,320	50mm	3.5	48°	{ standard "all-purpose" photography
Hektor 50,350	50mm	2.5	48°	{ sport and action photography
Summar 50,360	50mm	2	48°	{ candid, night, and general photography
Hektor 50,390	73mm	1.9	34°	{ ultra-speed and night-candid photography
Elmar 50,410	90mm	4	27°	aerial, sport and portraiture
Thambar 50,415	90mm	2.2	27°	{ pictorial, portraiture, and long focus photography
Elmar 50,430	105mm	6.3	24°	{ light weight lens for distance photography
Hektor 50,460	135mm	4.5	19°	long-range photography
Hektor 50,540	135mm			{ short-coupled, same as above, but for use with reflex mirror focusing device
Telyt 50,520	200mm	4.5	12°	{ extreme distance photography



No. 50,540

No. 50,390

No. 50,520

No. 50,415

No. 50,460

No. 50,430



No. 50,310

No. 50,360

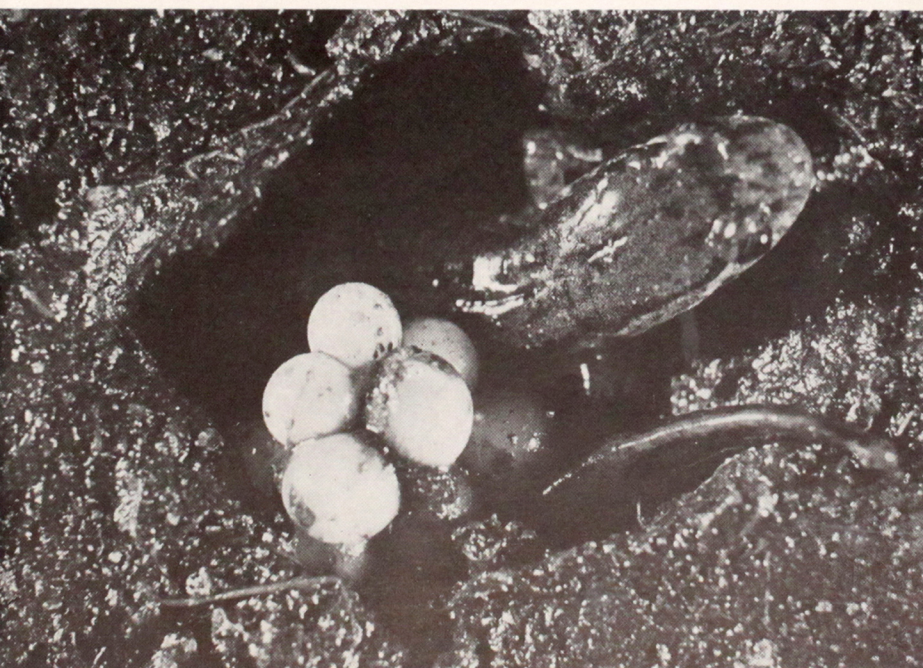
No. 50,350

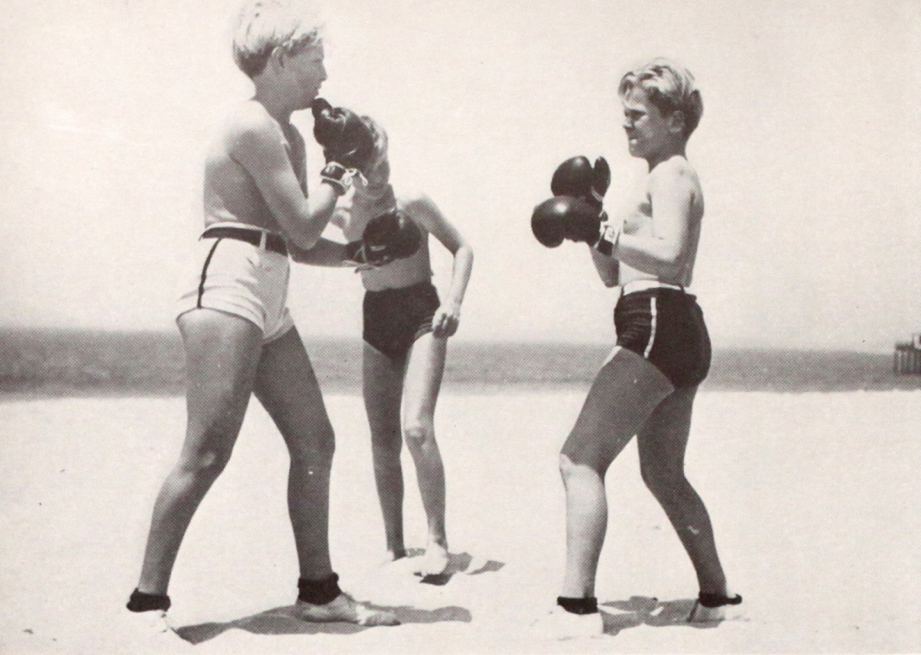
No. 50,290

No. 50,320

No. 50,410

This is the battery of thirteen LEICA lenses.





It will be apparent that with this wide selection of optics, no form of photography need be considered impossible or even difficult. It is likewise obvious that the LEICA owner doesn't need this complete battery of lenses—the selection is available to him so that for special requirements he can pick out one or more that will suit the work he contemplates. The average amateur who uses his LEICA only for routine work will usually find one lens entirely satisfactory.

The ELMAR 50mm f:3.5, HEKTOR 50mm f:2.5 and SUMMAR 50mm f:2 lenses are recommended as all around purpose lenses and the SUMMAR particularly when a higher speed is likewise a desirable feature of consideration.

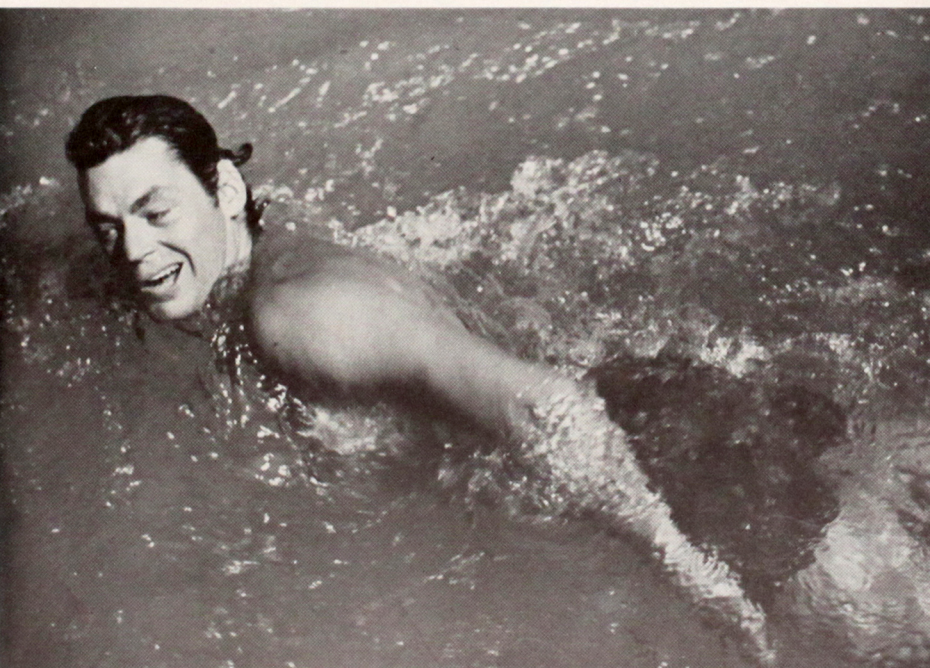


*Picture at left: — The boxing match —*

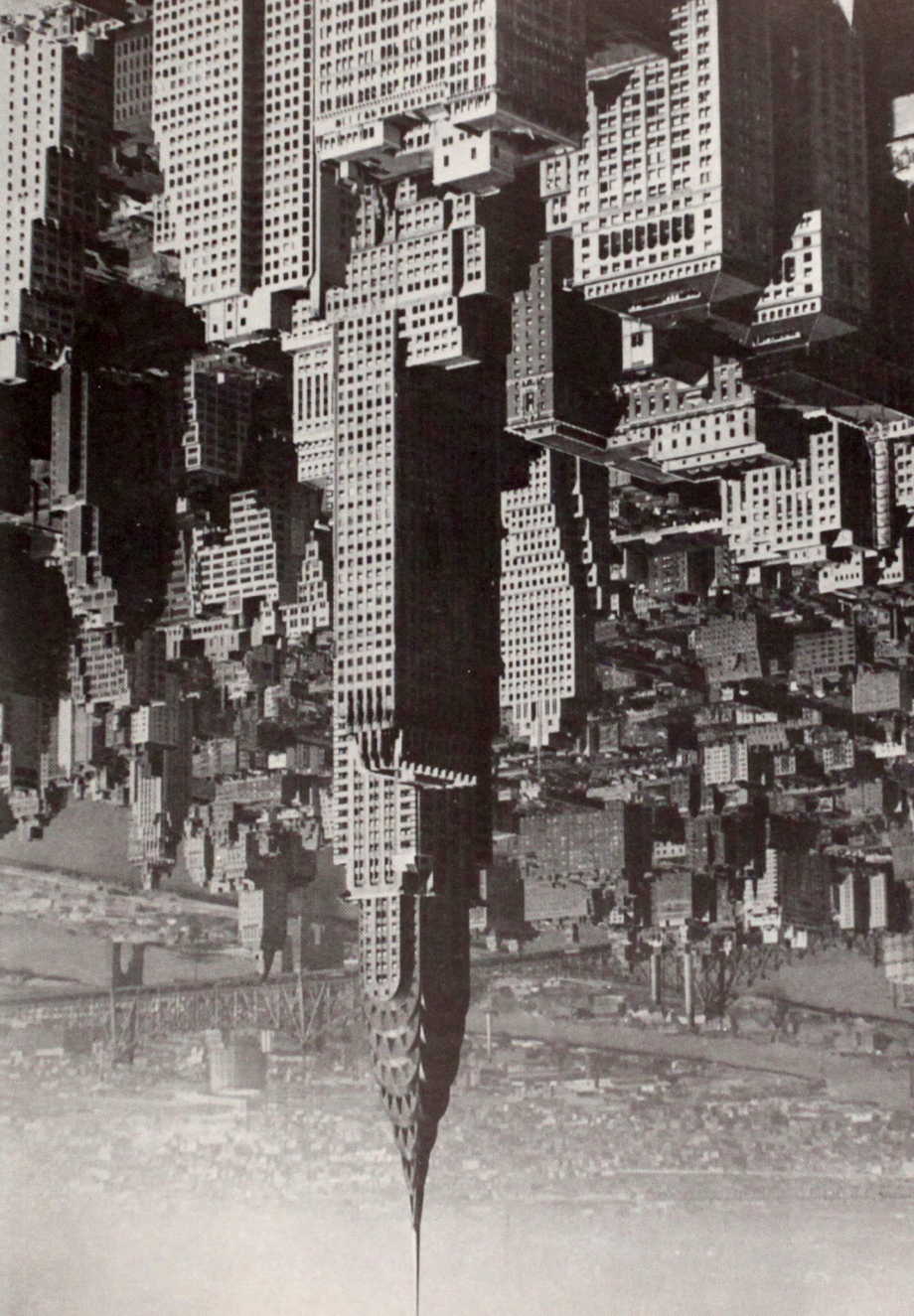
LEICAphoto by Tom Evans, M. G. M. Studios.

All LEICA lenses are engraved with a depth of focus scale which is invaluable to all users as it tells them at a glance the extent of the depth of focus the lens produces at any given diaphragm stop. All lenses (except TELYT) are fitted in focusing mounts which automatically couple with the built-in range finder of the models G, F, and D LEICAS.

The ELMAR, HEKTOR, and SUMMAR 50mm lenses are supplied in collapsible mounts which permit them to be slid into the camera-body when not in use, thus making the camera extremely compact for carrying.









## LEICA ACCESSORIES

As has been previously pointed out, many accessories for the LEICA are available. The average LEICA owner, however, will require only a few of the more important ones for general photographic purposes. A list of these is as follows:

- Sunshade
- Filters
- Exposure-meter
- Eveready carrying case
- Developing tank
- Enlarger
- Paper easel
- Orange filter

These few accessories will be of great value to the LEICA owner whose activities are mainly general "snapshooting".

Those who wish to become more ambitious in their LEICA-ING are referred to additional accessories which provide a greater versatility of application for the LEICA, viz.:

Panorama device (for making panorama pictures)

Stereoly device (for making true stereoscopic pictures)

Remote shutter control (for animal, nature, and candid pictures secured with the operator at a distance from the camera)

Rapid winder (for news, sport, candid, and other pictures where a sequence of many pictures of a subject in rapid succession is wanted)

Distance lenses such as ELMAR 105mm, HEKTOR 135mm, or TELYT 200mm (for distance photography, candid pictures, out-of-doors, etc.)

View finders (for indicating the fields of the various focal length lenses and for photographing at angles)

Photoflash attachments (for snapshots in unfavorable light)

Projectors (for lectures and home use)

There are many ramifications not mentioned in this booklet. Interested persons desiring additional information about the use of the LEICA and any of its numerous accessories can secure complete information by writing to the Service Department, E. Leitz, Inc., 60 East 10th Street, New York City.

A few of the most popular LEICA accessories are described here:



No. 51,790

**Sunshade:** A most useful device, which should be owned by every LEICA user because it prevents stray light from entering the lens during exposure. The best results are obtained with a LEICA sunshade on the lens. Several models are available, each for a distinct purpose and lens. Be sure to get the right sunshade for your LEICA.



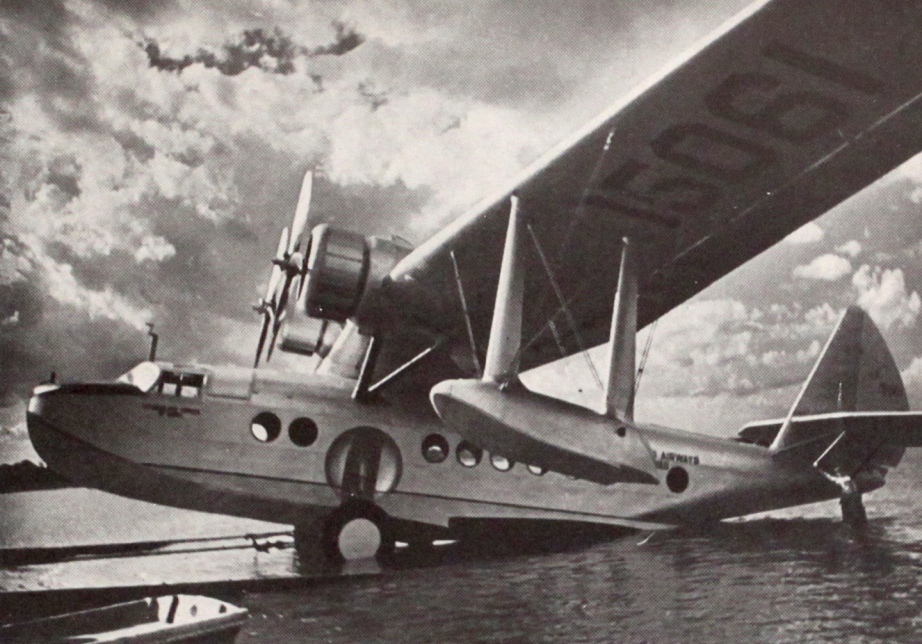
No. 51,110

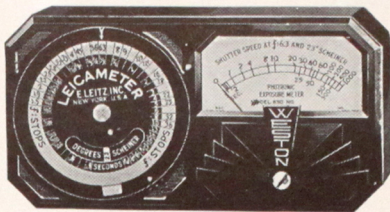


No. 51,020

**Filters:** A few well-chosen LEICA filters will make all the difference in your photographs. For bringing in cloud formations, producing night effects, and securing correct color and tonal values, a filter is necessary. The LEICA yellow filter No. 1 is usually regarded as the general-purpose filter for both ortho and pan film. This filter should be the first the beginner buys for his LEICA.

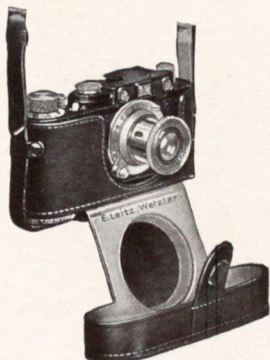






No. 51,505

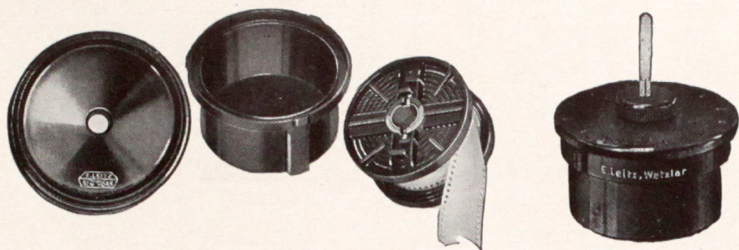
**Exposure meter:** Without correct exposures your LEICA pictures can never be completely successful. Make sure of the quality of your negatives by using a Weston LEICAMETER exposure meter. Small, compact, extremely accurate, and durable, the LEICAMETER frees you from all worry about exposure problems.



No. 53,010

**Carrying Case:** The LEICA owner is justly proud of the appearance of his LEICA, and therefore keeps, carries, and uses it in the popular Eveready case. The popularity of this type of case lies in the fact that the camera need not be removed for use—the cover and front merely open up, permitting the lens to project outward. The camera is gotten ready instantly when kept in an Eveready case. It is small—hardly larger than the camera itself—hence never in the way. Complete protection at all times is afforded the LEICA.



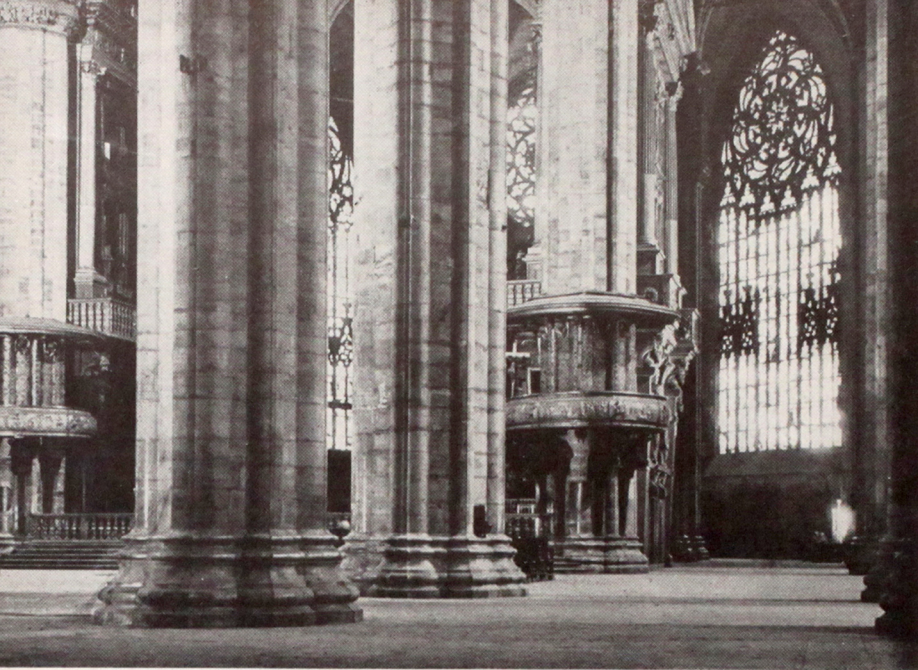


No. 56,400

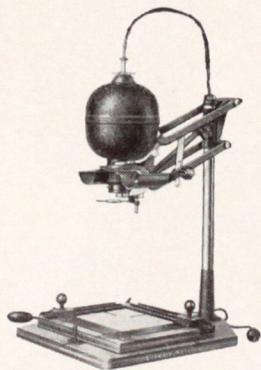
No. 56,490

**Developing Tank:** Not until the LEICA owner does his own developing and enlarging can he know the delights of bringing his photographic activities through the various processes. He only then begins to fully understand the underlying principles involved, and as a result his work with the LEICA constantly improves, yielding a larger return in pleasure and contentment. Two developing tanks are supplied: the REELO, and the CORREX. Both are excellent, and the LEICA owner makes no mistake by securing





either one of them. Developing LEICA films with one of these tanks is economical, sure, rapid, and highly successful.



No. 60,450

**FOCOMAT Enlarger**

**Enlarger:** The VALOY and FOCOMAT enlargers, designed expressly for LEICA negatives, are superior instruments far ahead of their time, incorporating as they do the very latest innovations which have proved successful in the enlarging of miniature negatives. The VALOY and FOCOMAT enlargers are basically similar, but the latter provides for automatic focusing which is a decided convenience, especially when any quantity of work is contemplated. (U. S. Patent 1,930,431.)



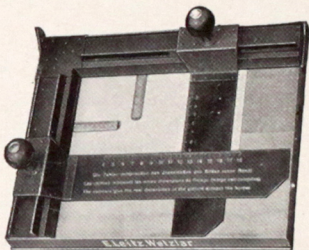




# **HALL OF ELEPHANTS—NEBRASKA STATE MUSEUM—A PANORAM**

How the picture was made . . . 50mm f:3.5 ELMAR  
DuPont Superior Film. Seven separate nega

**Paper Easel:** Because paper easels come in various sizes and styles, they are not sold as part of the enlarger unit. Listed separately, they enable the LEICA owner to make a suitable selection for his individual purposes. The LEICA paper easels are equipped with adjustable metal masking bands with which uniform white borders on the prints can be automatically obtained.

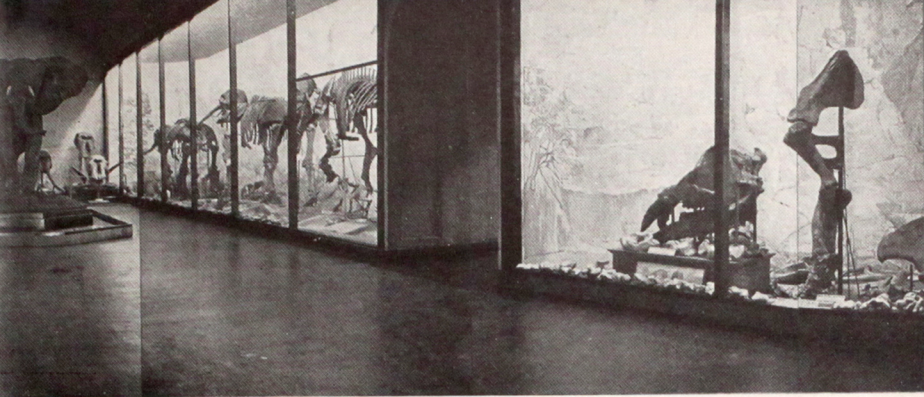


No. 61,310

**Orange Filter:** In enlarging it often becomes desirable to focus the projected image directly upon the sensitized paper on the paper easel. This cannot be done except with the aid of the special orange enlarging filter which attaches to the enlarger, and swings under the enlarger lens.

**Note:** Please refer to the catalog listing at the rear of this booklet or write for additional accessory literature.





**LEICA PICTURE MADE BY DR. A. L. LUGN, LINCOLN, NEBRASKA.**

ns with diaphragm set at f:12.5, 2 minutes exposure,  
es used to make the complete panorama view.

## LEICA INFORMATION SERVICE

A fact well worth keeping in mind is that the owner of a LEICA camera is entitled to free consultation service and advice at all times, and also the fascinating little magazine LEICA PHOTOGRAPHY which is published monthly by E. Leitz, Inc. LEICA PHOTOGRAPHY is unique in that it is the only magazine of its kind published in the United States. It is edited by Augustus Wolfman.

LEICA PHOTOGRAPHY magazine is now in its fourth year of existence, and serves as a bond between all registered LEICA owners in the United States. Its pages contain a wealth of valuable and inspirational information and assistance every month, and therefore LEICA PHOTOGRAPHY is looked forward to regularly by its many thousands of recipients.

So when you purchase a LEICA, you really get more than the camera—you get a life-time service and a magazine which will help you to more interesting and better results as time goes on. You will discover that photography with the LEICA is inexhaustable.

## TESTIMONIALS

Every day brings wonderful letters of commendation to our desks from people in all walks of life. When important, busy people take time off to write about their satisfaction of the LEICA camera, it means a good deal. We could fill a volume with such letters, but append here only a few which go to show the various ways in which the LEICA is being successfully used.

### Easy to Operate

"The ease of operation, economy, and splendid results make the LEICA the ideal camera for me".—S. L., Buffalo, N. Y.

### For News and Candid Photography

"The LEICA is the only camera I use in my newspaper work. Its convenience and ability to get candid shots under adverse conditions convinced me that it is eminently suited to my purpose".—D. N. R., Tampa, Florida.

### LEICA In The Air

"I use my LEICA for aerial photography. It is my choice of anything short of a regular aero camera. The absence of bellows makes the LEICA in effect an aerial camera of great compactness and economy".—F. J., Denver, Colorado.





## Portraits

"For portraiture I have selected the LEICA and the ELMAR 90mm lens. I get the most natural perspective with the lens, and the camera permits the use of a wide choice of panchromatic films".—W. L. V., New York City.

## Durability of the LEICA

"My LEICA Model D which was lost July 24, 1935, while touring the Northwest, was found near Bliss, Idaho on March 20, after having been exposed to the elements for 8 months. I was astonished to find that it is apparently not damaged. The summer sun heats the basalt lave of the Snake River Valley to a high temperature, and in the winter zero weather is common. There are occasional rains and snows. My LEICA has therefore withstood temperatures ranging through nearly 200° F."—H. P. Z., Detroit, Mich.

## Sharp Enlargements

"My LEICA outfit produces enlargements of contact sharpness and quality. Why should I use a larger and more expensively operated camera?"—A. N. U., Seattle, Washington.

## LEICA and Writing

"As a writer and traveler I find the LEICA indispensable. It is always in my pocket, ready to snap record pictures of scenes and locals which I wish to recall at a later date for use in stories".—V. E., Hollywood, California.

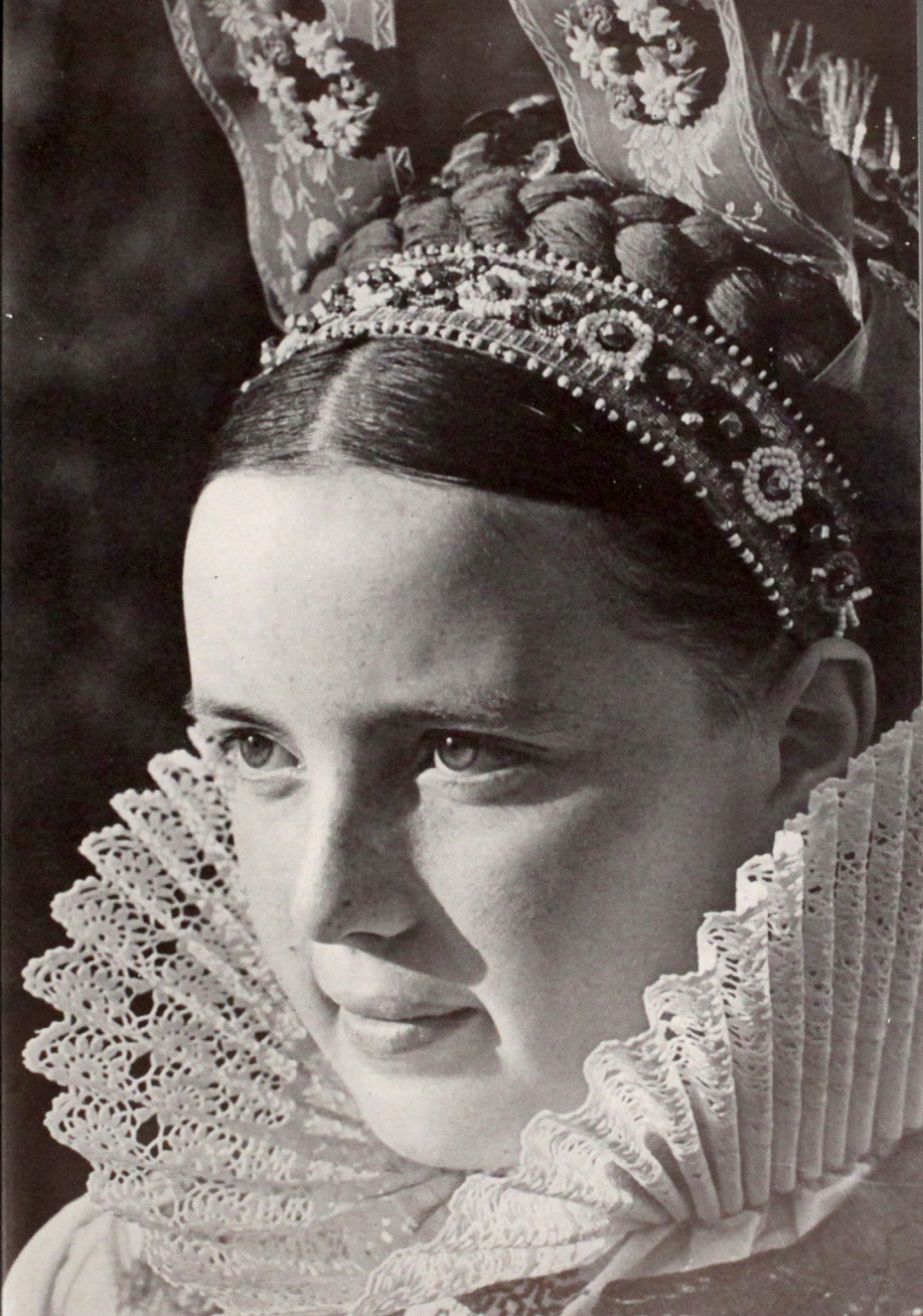
## Stream-lined Beauty

"As I am an industrial designer, I often leave my LEICA before me on my desk while I work, just to enjoy its modern streamlined appearance".—A. R., Chicago, Ill.

## Photographing Children

"My LEICA is indispensable for photographing my two children. I have made negatives which would be impossible to obtain with a larger camera".—H. S., Honolulu, Hawaii.





# PARTIAL LISTING OF LEICA CAMERAS AND ACCESSORIES

Prices subject to change without notice.

For items and accessories not listed here, please write to  
E. Leitz, Inc., - - - - 60 East 10th St., New York City

## LEICA CAMERAS

Cat. No. and Code Word		Price
<b>49,950</b> LU00B	<b>LEICA AUTOFOCAL CAMERA MODEL G</b> , complete with focal plane shutter with speeds from <b>1 to 1/1,000th second</b> , built-in focusing range finder, special $1\frac{1}{2}$ X magnifying eyepiece for range finder, eyelets for special strap, supplied with camera, 10 in. cable release and one film magazine, <b>chrome finish</b> , without lens or case.....	\$141.00
<b>49,960</b> LIOON	<b>LEICA AUTOFOCAL CAMERA MODEL G</b> , same as No. 49,950 but with SUMMAR 50mm focus f:2 lens..	255.00
<b>49,970</b> LEOOR	<b>LEICA AUTOFOCAL CAMERA MODEL G</b> , same as No. 49,950 but with ELMAR 50mm focus f:3.5 lens..	198.00
<b>50,000</b> LYDRO	<b>LEICA AUTOFOCAL CAMERA MODEL F</b> , complete with focal plane shutter with speeds from <b>1 to 1/500th second</b> , built-in focusing range finder, special $1\frac{1}{2}$ X magnifying eyepiece for range finder, eyelets for special strap, supplied with camera, 10 in. cable release, and one film magazine, <b>black finish</b> , without lens or case.....	117.00
<b>50,010</b> LYDRO- CHROM	<b>LEICA AUTOFOCAL CAMERA MODEL F</b> , same as No. 50,000 but <b>chrome finish</b> .....	126.00
<b>50,015</b> LYSUM	<b>LEICA AUTOFOCAL CAMERA MODEL F</b> , same as No. 50,000 but with SUMMAR 50mm focus f:2 lens	231.00
<b>50,020</b> LYMAR	<b>LEICA AUTOFOCAL CAMERA MODEL F</b> , same as No. 50,000 but with ELMAR 50mm focus f:3.5 lens	174.00
<b>50,030</b> LYKAN	<b>LEICA AUTOFOCAL CAMERA MODEL D</b> , with focal plane shutter with speeds for <b>1/20 to 1/500th second</b> , built-in range finder, coupling for automatic focusing, 10 in. cable release and one film magazine, <b>black finish</b> , without lens or case.....	93.00
<b>50,035</b> LYKAN- CHROM	<b>LEICA AUTOFOCAL CAMERA MODEL D</b> , same as No. 50,030 but <b>chrome finish</b> .....	102.00
<b>50,040</b> LYKUP	<b>LEICA AUTOFOCAL CAMERA MODEL D</b> , same as No. 50,030, but with ELMAR 50mm focus f:3.5 lens	150.00
<b>50,050</b> LYSTA	<b>LEICA CAMERA MODEL E</b> , complete with focal plane shutter with speeds from <b>1/20 to 1/500th second</b> , special horizontal detachable range finder, ELMAR 50mm focus, f:3.5 lens, and one film magazine, <b>black finish</b> , without case.....	111.00
<b>50,052</b> LYSTA- CHROM	<b>LEICA CAMERA MODEL E</b> , same as No. 50,050, but <b>chrome finish</b> .....	122.70



Cat. No. and Code Word		Price
<b>50,055</b> LEMAX	<b>LEICA CAMERA MODEL E</b> , same as No. 50,050 but without the special horizontal detachable range finder .....	<b>\$98.40</b>
<b>50,057</b> LEMAX- CHROM	<b>LEICA CAMERA MODEL E</b> , same as No. 50,055 but <b>chrome finish</b> .....	<b>108.90</b>
<b>50,070</b> LOOMY	<b>LEICA AUTOFOCAL CAMERA MODEL FF</b> , accommodating large film capacity (250 exposures). Magazine holds 33 feet of standard 35mm cinema film. This camera is particularly well adapted for aerial, copy, and other types of photography where a greater film capacity is a convenience. Aside from the larger film capacity, this model is identical to the model F LEICA No. 50,000. Complete, with focal plane shutter with speeds from 1 to 1/500th second, built-in focusing range finder, special 1½ X magnifying eye-piece for range finder, 10 in. cable release, and two special 33 ft. capacity film magazines (a magazine is used at both ends of this camera, making rewinding unnecessary), <b>without lens or case</b> .....	<b>222.00</b>
<b>50,080</b> LOOYE	<b>LEICA AUTOFOCAL CAMERA MODEL FF</b> , same as No. 50,070, but with ELMAR 50mm focus, f:3.5 lens NOTE: LEICA CAMERAS ARE NOT SUPPLIED WITHOUT LENSES. (SEE NO. 51,965 FILM TRIMMING GUIDE FOR FF, NO. 53,040 EVERREADY CASE, AND NO. 51,942 FILM WINDER.)	<b>279.00</b>
<b>50,111</b> OLIGO	<b>SINGLE EXPOSURE CAMERA</b> , same as No. 50,110, similar purposes of a special nature where only one exposure is required. The camera consists of a round metal body into which the standard LEICA lens is screwed. Special metal film holders are used which accommodate standard 35mm motion picture film in strips 1½ in. long. A special IBSOR shutter is supplied with the camera, which can be used on all LEICA lenses, and by means of which the exposures are made. A ground glass focusing screen is used for focusing the lens. It slides in and out of the rear of the camera, interchangeably with the film holder. This camera is in effect a miniature view camera. A view finder may be attached to the camera body if desired, provision having been made for such accommodation. The camera complete consisting of camera body, ground glass focusing screen, one metal film holder, and IBSOR shutter which can be used on all LEICA lenses, except Nos. 50,500 and 50,520, <b>but without lens</b> .....	<b>33.00</b>
<b>50,111</b> OLORA	<b>SINGLE EXPOSURE CAMERA</b> , same as No. 50,110, but <b>without IBSOR shutter</b> ..... NOTE: SEE NO. 51,610 FOR SPECIAL VIEW FINDER.	<b>15.00</b>

## LEICA LENSES

All lenses except Nos. 50,500, 50,520 and 50,540 are supplied with the coupling mount for use with the built-in range finders on the Model D, F and G cameras. These lenses can also be used with the Model E LEICA.

Some lenses have a small focusing mark for use with Infra-Red films and filters. The VIDOM Universal View Finder may be used with all LEICA lenses except Nos. 50,290 and 50,500.

NOTE: ALL LEICA LENSES HAVE A DEPTH OF FOCUS SCALE BUILT INTO THE LENS MOUNT.

Cat. No. and Code Word		Price
<b>50,290</b> HOOPY	<b>LEITZ Anastigmat HEKTOR</b> , 28mm focus, f:6.3 (extremely wide angle lens), angle of view 76°, in focusing mount .....	<b>\$75.00</b>
	NOTE: SEE NOS. 51,595 AND 51,596 FOR SPECIAL VIEW FINDER.	
<b>50,310</b> EKURZ	<b>LEITZ Anastigmat ELMAR</b> , 35mm focus, f:3.5 (wide angle lens), angle of view 65°, in focusing mount..	<b>60.00</b>
	NOTE: SEE NO. 51,600 FOR SPECIAL VIEW FINDER.	
<b>50,320</b> ELMAR	<b>LEITZ Anastigmat ELMAR</b> , 50mm focus, f:3.5 (standard lens), angle of view 48°, in focusing mount .....	<b>57.00</b>
<b>50,350</b> HEKTO	<b>LEITZ Anastigmat HEKTOR</b> , 50mm focus, f:2.5 (speed lens), angle of view 48°, in focusing mount	<b>67.50</b>
<b>50,360</b> SUMUS	<b>LEITZ Anastigmat SUMMAR</b> , 50mm focus, f:2 (super-speed lens), angle of view 48°, in collapsible mount .....	<b>114.00</b>
<b>50,390</b> HEGRA	<b>LEITZ Anastigmat HEKTOR</b> , 73mm focus, f:1.9 (ultra-speed lens), angle of view 34°, in special spiral focusing mount which does not require rotation of lens when being focused, including special sun shade .....	<b>198.00</b>
<b>50,410</b> ELANG	<b>LEITZ Anastigmat ELMAR</b> , 90mm focus, f:4 (speedy distance lens), angle of view 27°, in focusing mount .....	<b>83.50</b>
<b>50,415</b> TOODY	<b>LEITZ Anastigmat THAMBAR</b> , 90mm focus, f:2.2 (soft focus lens of highest speed for artistic portrait photography), angle of view 27°, in focusing mount, including special sunshade.....	<b>150.00</b>
<b>50,430</b> ELZEN	<b>LEITZ Anastigmat ELMAR</b> , 105mm focus, f:6.3 (distance lens of light weight for landscape photography), angle of view 24°, in focusing mount, including special sunshade .....	<b>69.00</b>
<b>50,460</b> HEFAR	<b>LEITZ Anastigmat HEKTOR</b> , 135mm focus, f:4.5 (lens for increased distances), embodying the HEKTOR optical principles in a distance lens, yielding exceptional results, angle of view 19°, in focusing mount .....	<b>126.00</b>
<b>50,500</b> OTPLO	<b>LEITZ Anastigmat TELYT</b> , 200mm focus, f:4.5 (full telephoto lens of highest definition, free from distortion), angle of view 12°, in focusing mount, including special sunshade .....	<b>144.00</b>
	NOTE: THE TELYT LENS NO. 50,500 CAN ONLY BE USED WITH MIRROR REFLEX HOUSING NO. 50,510.	
<b>50,510</b> PLOOT	<b>Mirror Reflex Housing</b> , complete, with ground glass focusing screen, magnifying arrangement, two magnifiers and double cable release unit.....	<b>114.00</b>
<b>50,520</b> TOOLF	<b>LEITZ Anastigmat TELYT</b> , 200mm focus, f:4.5 (No. 50,500), complete with Mirror Reflex Housing No. 50,510 .....	<b>258.00</b>



Cat. No. and Code Word		Price
<b>50,530</b> MOOSP	<b>Intermediate Extension Collar</b> , 15mm, for use with TELYT lens No. 50,500 (the extension ring No. 50,530 or multiple units thereof, are recommended for use with TELYT No. 50,500 when it is desired to use this lens for "close-up" photography at less than 10 ft.) .....	\$ 2.40
<b>50,540</b> OHEBO	<b>LEITZ Anastigmat HEKTOR</b> , 135mm focus, f:4.5, angle of view 19°, in short focusing mount, without coupling to the range finder (this lens can only be used with the mirror reflex housing No. 50,510 or with the intermediate collar No. 50,550) .....	111.00
<b>50,550</b> ZOOKE	<b>Intermediate Collar</b> with Automatic Coupling for LEICA range finder (with this Collar the HEKTOR lens No. 50,540 may be used in the same manner as the regular HEKTOR 135mm lens No. 50,460) .....	33.00

### LEICA FILTERS

NOTE: ALL LEICA FILTERS ARE OF SOLID GLASS IN WHICH THE COLOR IS INHERENT. THEY MAY THEREFORE BE USED UNDER ALL CLIMATIC CONDITIONS AND RETAIN THEIR ORIGINAL COLOR.

**34mm Filters in slip-on mounts for LEICA lenses Nos. 50,290, 50,310, 50,320, 50,350, 50,360, 50,410, 50,430, 50,460 and 50,540.** When using the ELMAR 105mm, f:6.3 lens, the filter is mounted over the sunshade.

<b>51,020</b> FIHEL	<b>Yellow Filter O</b> (very light) .....	5.40
<b>51,030</b> FIGRO	<b>Yellow Filter I</b> (light) .....	5.40
<b>51,040</b> FIGAM	<b>Yellow Filter II</b> (medium) .....	5.40
<b>51,050</b> QCP00	<b>Yellow Filter III</b> (dark) .....	5.40
<b>51,060</b> FIRAD	<b>Graduated Sky Filter</b> .....	6.60
<b>51,070</b> FIOLA	<b>U. V. (ultra violet) Protection Filter</b> , two times factor .....	5.40
<b>51,080</b> FIPOS	<b>Panchromatic (green) Filter</b> , two to three times factor .....	6.00
<b>51,082</b> FOOBD	<b>Graduated Panchromatic (green) Filter</b> .....	6.90
<b>51,085</b> FED00	<b>Infra Red Filter I</b> (light) .....	6.00
<b>51,090</b> FIKYB	<b>Infra Red Filter II</b> (medium) .....	6.00
<b>51,090a</b> FE00G	<b>Infra Red Filter III</b> (dark) .....	6.00
	<b>30mm Filters in screw-in mounts for LEICA lenses Nos. 50,290, 50,360, 50,410, 50,460, and 50,540.</b>	
<b>51,091</b> FIM00	<b>Yellow Filter O</b> (very light) .....	4.50
<b>51,092</b> FIOOC	<b>Yellow Filter I</b> (light) .....	4.50
<b>51,093</b> FAV00	<b>Yellow Filter II</b> (medium) .....	4.50
<b>51,094</b> QB00E	<b>Yellow Filter III</b> (dark) .....	4.50
<b>51,095</b> FB00K	<b>U. V. (ultra violet) Protection Filter</b> , two times factor .....	4.50

Cat. No. and Code Word		Price
<b>51,096</b> FBX00	<b>Panchromatic (green) Filter</b> , two to three times factor .....	<b>\$6.00</b>
<b>51,096a</b> FNOOY	<b>Infra Red Filter I</b> (light).....	<b>6.00</b>
<b>51,097</b> FCOOI	<b>Infra Red Filter II</b> (medium).....	<b>6.00</b>
<b>51,098</b> FNU00	<b>Infra Red Filter III</b> (dark).....	<b>6.00</b>
	<b>39mm Filters in screw-in mounts for LEICA lens No. 50,390:</b>	
<b>51,100</b> FIWAS	<b>Yellow Filter O</b> (very light).....	<b>5.40</b>
<b>51,110</b> FIREG	<b>Yellow Filter I</b> (light).....	<b>5.40</b>
<b>51,120</b> FIWIG	<b>Yellow Filter II</b> (medium).....	<b>5.40</b>
<b>51,130</b> FILXA	<b>Yellow Filter III</b> (dark).....	<b>5.40</b>
<b>51,140</b> FIWET	<b>U. V. (ultra violet) Protection Filter</b> , two times factor .....	<b>5.40</b>
<b>51,150</b> FIGIL	<b>Graduated Sky Filter</b> , in slip-on mount.....	<b>8.70</b>
<b>51,160</b> FIRYX	<b>Panchromatic (green) Filter</b> , two to three times factor .....	<b>6.60</b>
<b>51,162</b> FOOCR	<b>Panchromatic Graduated Green Sky Filter</b> .....	<b>9.00</b>
<b>51,168</b> FGOOE	<b>Infra Red Filter I</b> (light).....	<b>6.60</b>
<b>51,170</b> FIPL0	<b>Infra Red Filter II</b> (medium).....	<b>6.60</b>
<b>51,170a</b> FHOOD	<b>Infra Red Filter III</b> (dark).....	<b>6.60</b>
	<b>48mm Filters in screw-in mounts for LEICA lenses Nos. 50,415, 50,500 and 50,520:</b>	
<b>51,171</b> POOAH	<b>Yellow Filter O</b> (very light).....	<b>6.60</b>
<b>51,172</b> POOBV	<b>Yellow Filter I</b> (light).....	<b>6.60</b>
<b>51,173</b> POOCI	<b>Yellow Filter II</b> (medium).....	<b>6.60</b>
<b>51,174</b> POOFX	<b>U. V. (ultra violet) Protection Filter</b> , two times factor .....	<b>6.60</b>
<b>51,175</b> PGOOX	<b>Graduated Sky Filter</b> , in slip-on mount.....	<b>10.80</b>
<b>51,175a</b> POODW	<b>Panchromatic (green) Filter</b> , two to three times factor .....	<b>8.40</b>
<b>51,175b</b> PGY00	<b>Panchromatic Graduated Green Sky Filter</b> .....	<b>10.95</b>
<b>51,176</b> POOGL	<b>Infra Red Filter I</b> (light).....	<b>7.95</b>
<b>51,177</b> POOEK	<b>Infra Red Filter II</b> (medium).....	<b>7.95</b>
<b>51,178</b> POOHY	<b>Infra Red Filter III</b> (dark).....	<b>7.95</b>
<b>51,200</b> DUFAN	<b>LEICA DUFAYCOLOR Filter No. 1-A</b> for correct color-rendering on Dufaycolor film with <b>Photoflood</b> and <b>Photoflash</b> illumination, complete in 32mm filter mount .....	<b>6.00</b>
<b>51,210</b> DUFTU	<b>LEICA DUFAYCOLOR Filter No. 1-B</b> for correct color-rendering on Dufaycolor film with <b>tungsten</b> (Mazda) illumination, complete in 32mm filter mount .....	<b>6.00</b>



**Cat. No. and  
Code Word**

**Price**

**51,220**  
DUFEN

**LEICA DUFAYCOLOR Filter**, Daylight Green, for strong rendering of greens in daylight, complete in 32mm filter mount.....

**\$6.00**

**51,300**  
MOUNT

**Filter Mount**, 34mm diameter with set screw and special adapter ring to fit DUFAYCOLOR or Wratten Filters of 32mm diameter.....

**3.60**

**NOTE: Eastman Kodak Wratten Filters** are also available in LEICA Mounts on special order. The average price for Wratten filters in LEICA Mounts to fit all LEICA lenses with the exception of the HEKTOR 73mm, f:1.9, THAMBAR 90mm f:2.2 and TELYT 200mm f:4.5 lenses is.....

**6.00**

## CAMERA ACCESSORIES

**51,505**  
WESTO

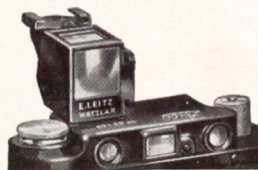
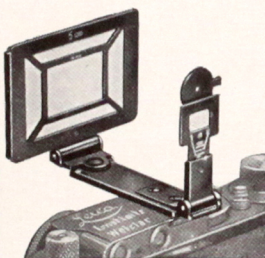
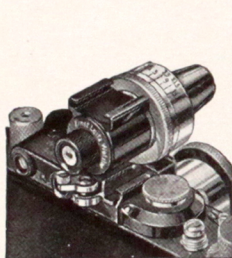
**WESTON LEICAMETER Model C** (No. 650), new model, with the sensitivity increased three times over the previous model, direct reading scale, simplified exposure dial; metal calculator disc gives correct readings for the greatest range of light intensities. **Without case**.....

**22.50**

**51,506**  
WESCA

**Soft Leather Case**, with zipper for LEICAMETER..

**1.75**



No. 51,530

No. 51,570

No. 51,560

**51,520**  
ORTUX

**Correction Lenses**, for use on range finder or view finder of Leica Models D, E, F and G for near and far-sightedness ..... **each**  
(Prices vary according to diopter desired)

**3.60 up**

**51,525**  
ORUXO

**Correction Lenses**, for use on range finder or view finder of Leica Models D, E, F and G to correct astigmatism, (prices vary according to the amount of correction necessary). ....

**8.70 up**

**NOTE:** Persons who wear spectacles may now have special lenses of the same correction as their spectacles (far-sightedness, near-sightedness or astigmatism) which screw into the range finder or view finder rear lens mount. **PRESCRIPTION OF THE PARTICULAR EYE-GLASSES MUST BE SENT WITH THE ORDER.** Correction lenses not in stock must be ordered from the factory and will take from 8 to 10 weeks to obtain.

**51,530**  
VIDOM

**VIDOM Universal View Finder**, with adjustable masking aperture and parallax adjustment, for use with all LEICA Cameras and Lenses, except lenses Nos. 50,290, 50,500 and 50,520.....

**26.70**

**51,535**  
VIDOMCHROM

**VIDOM Universal View Finder**, same as No. 51,530, but with chrome finish .....

**27.30**

**51,560**  
AUFSU

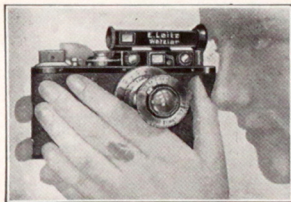
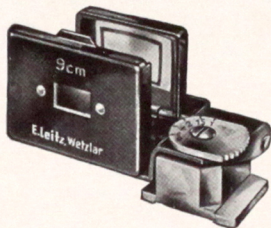
**Reflecting View Finder** for LEICA Camera for use with 50mm lenses Nos. 50,320, 50,350 and 50,360....

**10.50**

**Cat. No. and  
Code Word**

**Price**

<b>51,562</b> AY00C	<b>Reflecting View Finder</b> , same as No. 51,560, but with negative auxiliary lens, for use with the 35mm and 50mm LEICA lenses (when the negative lens is swung into position use the 35mm lens, when swung out use the 50mm lenses).....	<b>\$17.55</b>
<b>51,565</b> AH00T	<b>Reflecting View Finder</b> , similar to No. 51,562 for use with HEKTOR 28mm and 50mm lenses.....	<b>17.55</b>
<b>51,570</b> RASUK	<b>Direct Vision View Finder</b> , with parallax adjustment, special wire type metal finder accommodating the fields of all LEICA lenses excepting Nos. 50,290, 50,430, 50,440, 50,460 and 50,500.....	<b>8.70</b>
<b>51,575</b> RASUK- CHROM	<b>Direct Vision View Finder</b> , same as No. 51,570, but <b>chrome finish</b> .....	<b>9.60</b>
<b>51,580</b> RAMET	<b>Mask for RASUK Direct Vision Frame Finder</b> for giving fields of the 105 and 135mm lenses.....	<b>1.20</b>
<b>51,581</b> RAMET- CHROM	<b>Mask for RASUK Direct Vision Frame Finder</b> , same as No. 51,580, but <b>chrome finish</b> .....	<b>1.50</b>
<b>51,590</b> RASAL	<b>Direct Vision View Finder</b> , complete with mask giving fields of view of all LEICA lenses (combination of RASUK and RAMET) excepting Nos. 50,290 50,500 and 50,520 .....	<b>9.90</b>
<b>51,591</b> RASALCHROM	<b>Direct Vision View Finder</b> , same as No. 51,590, but <b>chrome finish</b> .....	<b>11.10</b>
<b>51,595</b> SU00Q	<b>Special View Finder</b> for 28mm HEKTOR lens No. 50,290 .....	<b>22.50</b>
<b>51,596</b> SU00QCHROM	<b>Special View Finder</b> , same as No. 51,595, but <b>chrome finish</b> .....	<b>24.60</b>
<b>51,600</b> WEISU	<b>Special View Finder</b> for 35mm ELMAR lens.....	<b>8.40</b>
<b>51,610</b> SUW00	<b>Special View Finder</b> for 50mm lenses, for use on single exposure camera No. 50,110 .....	<b>6.30</b>



*No. 51,615/618*

*No. 51,630*

<b>ø51,615</b> SA100	<b>Sport Finder</b> , especially arranged to facilitate quick and convenient operation with long-focus lenses; within a large area, within which the subject is shown in natural size, the section will appear on the film as marked off, and is shown by a bright and easily visible frame. A fast-moving subject can thus be kept track of before it appears within the picture angle of the objective. To compensate for parallax at close range, a disc is turned, the scale of which is visible within the field; <b>for use with the HEKTOR 73mm lens No. 50,390</b> .....	<b>12.60</b>
<b>ø51,615a</b> SA100CHROM	<b>Sport Finder</b> , same as No. 51,616 but <b>chrome finish</b> .....	<b>14.70</b>
<b>ø51,616</b> SER00	<b>Sport Finder</b> , same as No. 51,615, but for use with all LEICA lenses of 90mm focus.....	<b>12.60</b>
<b>ø51,616a</b> SER00CHROM	<b>Sport Finder</b> , same as No. 51,616, but <b>chrome finish</b> .....	<b>14.70</b>

ø—Not ready for immediate delivery.



Cat. No. and Code Word		Price
51,618	Sport Finder, same as No. 51,615, but for use with	
SYB00	all LEICA lenses of 135mm focus.....	\$12.60
51,618a	Sport Finder, same as No. 51,618, but chrome finish	14.70
SYEOCHROM		
51,620	WINKO Angle View Finder for LEICA Camera	
WINKO	models A, C and E .....	10.50
51,630	WINTU Angle View Finder for LEICA Camera	
WINTU	Models D, F and G (U. S. Patent 1,936,322).....	12.60
51,635	WINTU Angle View Finder, same as No. 51,630, but	
WINTU- CHROM	in chrome finish (U. S. Patent 1,936,322) .....	14.10
51,670	Short Base Range Finder FOKOS, for use on Model	
FOK08	E LEICA Camera (turret clip included with Model E LEICA No. 50,055) .....	12.60
51,680	Short Base Range Finder FOKOS, but with special	
HF00K	turret clip for use on models A, B and C LEICA Cameras .....	14.10
51,685	Orange Filter, in slip-on mount, for range finder	
ORAKO	for LEICA cameras D, F and G. This orange filter gives better contrast between the two range finder images .....	1.80
51,686	Orange Filter, same as No. 51,685, but chrome finish	1.80
ORAKOCHROM		
51,687	Optical Short Distance Focusing Device. This de-	
N00KY	vice allows the LEICA lenses coupled with range finder to be used at close distances between 3½ ft. and 1½ ft. enabling one to focus quickly as well as accurately. The device consists of an adapter cam, to be screwed into the objective flange; the cam carries a glass wedge that projects in front of the entrance window of the range finder and serves to deflect the light rays emanating from the subject. In addition, this device is equipped with an image- field stop situated in front of the direct view finder. The stop is manipulated by means of a curve and thus serves as parallax compensation. The cam is provided with a bayonet lock accommodating the LEICA ELMAR lens 50mm focus f:3.5 No. 50,320..	33.00
51,687a	Optical Short Distance Focusing Device, same as	
N00KY- CHROM	No. 51,687, but chrome finish.....	34.50
51,688	Optical Short Distance Focusing Device, same as	
N00KY- HESUM	No. 51,687, however, for use with LEICA lenses HEKTOR 50mm f:2.5 No. 50,350 or SUMMAR 50mm f:2 No. 50,360 .....	33.00
51,689	Optical Short Distance Focusing Device, same as	
N00KYHE- SUMCHROM	No. 51,688, but chrome finish.....	34.50
51,756	Lens Sunshade (metal) for LEICA lens No. 50,290	2.70
SO0HN		
51,758	Lens Sunshade (metal), for LEICA lens No. 50,310	2.70
FLQ00		
51,760	Lens Sunshade (metal), with set screw, for LEICA	
FS0N	lenses Nos. 50,320, 50,350, 50,410, 50,440, 50,460 and 50,540 .....	1.80
51,762	Lens Sunshade, same as No. 51,760, but chrome finish	2.10
FISONCHROM		
51,765	Lens Sunshade (metal), for LEICA lens No. 50,360	
SO0MP	especially designed for this lens and providing the highest efficiency .....	3.30
51,790	Lens Sunshade (metal), adjustable, for LEICA	
FIKUS	lenses Nos. 50,320, 50,350, 50,360, 50,410, 50,440 50,460 and 50,540. Barrel is calibrated for the vari- ous focal length lenses and may be adjusted ac- cordingly .....	5.40

—Not ready for immediate delivery.

Cat. No. and Code Word		Price
51,796 HEBOO	<b>Automatic Slow Speed Timing Device</b> , with speeds of 1, $\frac{1}{2}$ , $\frac{1}{4}$ and $\frac{1}{8}$ second, for attaching to LEICA Cameras A, C, D and E, <b>complete, but without case (Special Circular No. 1231, describing No. 51,796, upon request.)</b>	\$17.25
51,800 DIREKT	<b>Self-Timing Device</b> for LEICA Cameras. Permits delayed action for exposures.....	4.50
51,807 SCNOO	<b>Rapid Winder</b> —permits the making of successive exposures with extreme speed; it consists of an especially designed LEICA base-plate that may be interchanged with the standard base-plate. The special base-plate carries a trigger which slides in a groove. The trigger is operated by pulling it along the groove, this action rewinding the shutter and moving the film to the next section. The entire operation is done with one finger, thus permitting extremely rapid action. Pictures are thus made in surprisingly quick succession—as fast as the trigger can be pulled, in fact. The right hand is free for any other camera manipulations that may be necessary .....	19.50
51,808 SCNOOCHROM	<b>Rapid Winder</b> , same as No. 51,807, but <b>chrome finish</b>	21.60
NOTE: All LEICA cameras bearing a serial number below 111,450 must be altered to fit the Rapid Winders Nos. 51,807 and 51,808. The charge for this conversion is \$15.00. Also LEICA cameras bearing serial numbers between 111,450 and 159,000 must be changed at a cost of \$4.50. LEICA cameras with serial numbers above 159,000 can be used directly with the Rapid Winder without any change.		
51,810 VACUB	<b>LEICA Synchronized Photoflash Unit</b> , complete, with upright pillar (which accommodates batteries) with lug which fits into clip in all LEICA Cameras, set of batteries, receptacle for miniature testing lamp and standard Photoflash lamp, electrical connection for shutter release button, and folding metal reflector .....	7.50
NOTE: FOR COMPLETE DETAILS ABOUT THE LEICAFLASH UNIT ASK FOR CIRCULAR NO. 1222.		
51,820 DOOLU	<b>Spirit Level</b> (fits into clip on all LEICA Cameras)	2.10
51,830 FINOT	<b>Wire Cable Release</b> , 10 in. long, for LEICA Cameras with focal plane shutter, with arresting set screw for time exposures.....	.75
51,855 OOFRC	<b>Remote Release and Shutter Winder</b> , serves to operate the LEICA at distances when the presence of the operator may be disturbing, as in cases when photographing birds, wild animal life, etc.....	24.00
51,870 NATRA	<b>LEICA Negative Viewer and Marker</b> , with polished metal film channel, film-notching punch, and magnifying lens. Permits negatives to be seen clearly, distinctly and greatly enlarged so that detail in each is quickly noted without the necessity of placing in enlarger .....	12.90
51,880 NAMAS	<b>Small Plate of Milk Glass</b> , with frame for attaching in front of the negative viewer (No. 51,870)...	1.80
51,882 BF00X	<b>Negative and Positive Film Viewer</b> , desk model, large viewing lens, secondary high magnification lens, revolving mount for viewing vertical and horizontal films, 15-watt bulb for illumination, connecting cord .....	45.00



Cat. No. and Code Word		Price
51,890 FILCA	<b>Spare Roll Film Magazine</b> , for LEICA Camera (all models except Model FF No. 50,070).....	\$3.00
51,900 SPUCA	<b>Magazine Spool</b> , for LEICA film magazine No. 51,890	.90
51,910 SPULM	<b>Take-up Spool</b> , for LEICA Cameras D, E, F or G, as well as former models A, B or C.....	1.05
51,942 AFLOO	<b>Film Winder</b> with spring clip for holding film while winding LEICA magazine spool; this Winder will also take the larger model FF spools.....	7.05
51,950 AGRIF	<b>Hand Film Winder</b> , for use in loading LEICA magazine spools in darkroom.....	.60
51,960 ABLON	<b>Film Trimming Guide</b> , of hinged metal, used to shape and trim ends of film for loading into film magazines .....	1.80
51,965 ANZOO	<b>Film Trimming Guide</b> , for use with film of Camera FF, No. 50,070 .....	2.10
51,970 FIAKU	<b>Ball Jointed Tripod Head</b> , for use when mounting LEICA Camera in any fixed position.....	3.30
51,971 KGOON	<b>Large Ball Jointed Tripod Head</b> , similar to No. 51,970, but larger and heavier, especially recommended for the TELYT 200mm focus lens.....	8.25
51,975 SDOOG	<b>Quick-Changing Snap-Socket Tripod Head</b> .....	3.90
51,980 FARUX	<b>Panorama Tripod Head</b> , calibrated both for vertical and horizontal pictures with the LEICA Camera and any of the 50mm LEICA lenses. This panorama head permits the interchange of calibration rings so that perfectly matched pictures can be made with any of the LEICA lenses. Rings for other than the 50mm lenses are sold separately, see below	6.90
51,985 FOONW	<b>Interchangeable Calibrated Ring</b> , for use on Panorama Head No. 51,980, calibrated for 28mm lens..	1.80
51,990 FAROS	<b>Interchangeable Calibrated Ring</b> , for use on Panorama Head No. 51,980, calibrated for 35mm lens..	1.80
52,000 FAWAG	<b>Interchangeable Calibrated Ring</b> , for use on Panorama Head No. 51,980, calibrated for 73mm lens..	2.10
52,010 FAXIS	<b>Interchangeable Calibrated Ring</b> , for use on Panorama Head No. 51,980, calibrated for 90mm lens..	2.10
52,020 FASKI	<b>Interchangeable Calibrated Ring</b> , for use on Panorama Head No. 51,980, calibrated for 105mm lens.	2.10
52,030 FARLY	<b>Interchangeable Calibrated Ring</b> , for use on Panorama Head No. 51,980, calibrated for 135mm lens.	1.80
52,035 FOOQL	<b>Interchangeable Calibrated Ring</b> , for use on Panorama Head No. 51,980, calibrated for 200mm lens.	1.80
52,040 FIAVI	<b>Angle Bracket</b> , for convenience in attaching and leveling LEICA Camera to panorama head.....	3.75
52,045 TOOSF	<b>LEICA Table Tripod</b> , all metal construction, leather-faced where required to prevent scratching the camera, with leveling and tripod screws, complete, ready for use .....	7.05

## CARRYING AND PROTECTIVE CASES

53,010 ESNAR	<b>Everready Case</b> , cowhide, with neckstrap for LEICA Models A, C, D, E, F or G, with ELMAR 35mm or 50mm or HEKTOR 50mm lenses .....	8.70
53,020 ESMOS	<b>Everready Case</b> , for LEICA Model E and range finder FOKOS attached .....	8.70

Cat. No. and  
Code Word

53,030  
ESFUS  
53,040  
ESFOO

**Everready Case, for LEICA Models D, F and G with SUMMAR 50mm, f:2 collapsible mount.....**  
**Everready Case, cowhide, with neckstrap for LEICA Model FF, No. 50,070 .....**

**Price**  
**\$9.90**  
**12.00**



No. 53,080

53,070  
ETNEU

**Combination Case, brown cowhide, with strap handle and shoulder strap. Space for LEICA (models C, D, E, F or G), four of the LEICA lenses, universal view finder, angle view finder, three front lenses, two extra film magazines and four filters..**

**19.50**

53,080  
MTGUS

**Combination Case, brown cowhide, with strap handle and shoulder strap. Space for LEICA (models C, D, E, F or G), five of the LEICA lenses, universal view finder, angle view finder, three front lenses, two extra film magazines, and four filters..**

**24.00**

53,090  
ETMAX

**Combination Case, brown cowhide, with strap handle and shoulder strap. Space for LEICA (models C, D, E, F or G), seven LEICA lenses, universal view finder, angle view finder, three front lenses, two extra film magazines, and four filters.....**

**26.40**

53,100  
MUSAF

**Soft Leather Purse Case, for LEICA Models A, C, D, E, F or G .....**

**3.75**

## LEICA FILM

56,000  
FLIXY

**PERUTZ SPECIAL FINE GRAIN, ANTI-HALO ORTHOCHROMATIC FILM** (approx. 18-19° Scheiner). The finest-grained film available. 36 exposures in special metal daylight loading and unloading cartridge, hermetically sealed in lead tube .....**per cartridge**

**.99**

56,010  
FUJMA

**PERUTZ SPECIAL FINE GRAIN, ANTI-HALO ORTHOCHROMATIC FILM** (approx. 18-19° Scheiner). The finest-grained film available. 30-ft. rolls  
**per roll**

**2.70**



Cat. No. and Code Word		Price
<b>56,020</b> FLISO	<b>PERUTZ NEO-PERSENSO ORTHOCHROMATIC FILM</b> (approx. 21° Scheiner). A speedy, fine-grained film with excellent characteristics. 36 exposures in special metal daylight loading and unloading cartridge, hermetically sealed in lead tube ..... <b>per cartridge</b>	<b>\$.99</b>
<b>56,030</b> FUJLO	<b>PERUTZ NEO-PERSENSO ORTHOCHROMATIC FILM</b> (approx. 21° Scheiner). A speedy, fine-grained film with excellent characteristics. <b>30-ft. rolls</b> ..... <b>per roll</b>	<b>2.70</b>
<b>56,060</b> FLESA	<b>PERUTZ PEROMNIA PANCHROMATIC FILM</b> (approx. 22° Scheiner). The ideal speed panchromatic film with surprisingly fine grain. 36 exposures in special metal daylight loading and unloading cartridge, hermetically sealed in lead tube. <b>per cartridge</b>	<b>1.08</b>
<b>56,070</b> FLEWU	<b>PERUTZ PEROMNIA PANCHROMATIC FILM</b> (approx. 22° Scheiner). The ideal speed panchromatic film with surprisingly fine grain. <b>30-ft. rolls</b> ..... <b>per roll</b>	<b>3.15</b>
<b>56,075</b> FLEZI	<b>PERUTZ PERPANTIC PANCHROMATIC FILM</b> (approx. 21° Scheiner). A most excellent fine-grained panchromatic film of medium speed. Ideal for all purposes where a panchromatic film is indicated. 36 exposures in special metal daylight loading and unloading cartridge, hermetically sealed in lead tube ..... <b>per cartridge</b>	<b>1.08</b>
<b>56,076</b> FLIDU	<b>PERUTZ PERPANTIC PANCHROMATIC FILM</b> (approx. 21° Scheiner). A most excellent fine-grained panchromatic film of medium speed. Ideal for all purposes where a panchromatic film is indicated. <b>30-ft. rolls</b> ..... <b>per roll</b>	<b>3.15</b>
<b>56,080</b> FIGKA	<b>DUPONT SUPERIOR PANCHROMATIC FILM</b> (approx. 24° Scheiner). Daylight loading and unloading cartridges of 36 exposures..... <b>per cartridge</b>	<b>.80</b>
<b>56,090</b> FUJEP	<b>DUPONT MICROPAN PANCHROMATIC FILM</b> (approx. 17° Scheiner). A special, fine-grained panchromatic film with excellent contrast, useful for micro and copy work, as well as general photography. Daylight loading and unloading cartridges of 36 exposures ..... <b>per cartridge</b>	<b>.90</b>
<b>56,100</b> FIGIX	<b>DUPONT INFRA-D FILM</b> (approx. 17° Scheiner). For special infra-red photography and effect work. Daylight loading and unloading cartridges of 36 exposures ..... <b>per cartridge</b>	<b>1.15</b>
<b>56,210</b> DUFAY	<b>LEICADUFAY COLOR FILM</b> , in daylight loading and unloading spools of 30 exposures each.. <b>per roll</b>	<b>3.00</b>

NOTE: IN CONNECTION WITH THE LEICA DUFAYCOLOR FILM THE UV FILTERS NOS. 51,070 AND 51,095 ARE SUGGESTED FOR BRILLIANT SUNLIGHT AND DISTANT SCENES. THE DUFAYCOLOR FILTER 1-A NO. 51,200 IS RECOMMENDED FOR USE WITH PHOTOFLOOD AND PHOTOFLASH ILLUMINATION, AND THE DUFAYCOLOR FILTER 1-B NO. 51,210 IS USED IN CONJUNCTION WITH REGULAR MAZDA INCANDESCENT BULBS. THE DAYLIGHT GREEN DUFAYCOLOR FILTER 2-B NO. 51,220 IS EMPLOYED FOR A BETTER RENDERING OF GREENS IN DAYLIGHT.

## DEVELOPING ACCESSORIES

Cat. No. and Code Word		Price
<b>56,400</b> FETAN	<b>REELO All Bakelite Developing Tank, Model A</b> (for LEICA and all other 35mm cine film up to 5½ ft. lengths), complete with tank, lid, and grooved reel .....	<b>\$7.25</b>
<b>56,490</b> CORUN	<b>CORREX All Bakelite Developing Tank</b> , complete with reel, apron and hand agitator .....	<b>9.75</b>
<b>56,492</b> COSTI	<b>Hand Agitator</b> for CORREX tank.....	<b>.45</b>
<b>56,561</b> AGITA	<b>Electric Agitator</b> , for A. C. (alternating current) only. The New oscillating principle which assures the maximum agitation with the minimum of effort and energy. Attractively and substantially built, consisting of motor, ventilated housing, platform upon which tank is placed, and insulated cord. Complete, ready for use.....	<b>23.40</b>
<b>56,562</b> AGOTU	<b>Electric Agitator</b> , for D. C. (direct current) only. Same as No. 56,561 but for use on direct current....	<b>20.40</b>
<b>56,563</b> AGULI	<b>Automatic Time Switch</b> , for use for Electric Agitators Nos. 56,561 and 56,562. Bakelite housing and dial for 30-minute periods, automatic shut-off at any pre-determined time-interval. Complete with special plug and cord.....	<b>4.95*</b>
<b>56,570</b> FIMAN	<b>Developing Drum Outfit</b> , complete with two glass trays, metal stand support for drum, and glass revolving drum. Especially useful for developing natural color film and positive film prints where it is necessary to observe the development of the image on the film.....	<b>11.70</b>
<b>56,630</b> CORET	<b>Tank Thermometer</b> , calibrated in Fahrenheit for use with REELO or CORREX Tank.....	<b>1.20</b>
<b>56,640</b> FILEP	<b>Developer</b> , Perutz Fine-Grain Compensating, packed ten tubes per carton.....	<b>2.70</b>

## NEGATIVE FILE SYSTEMS

<b>57,000</b> FULPI	<b>Metal Filing Box</b> , with cover and sections for holding 25 rolls of LEICA film.....	<b>1.50</b>
<b>57,010</b> FULKU	<b>Loose-Leaf File</b> , for holding LEICA negatives cut into strips of three negatives each. Includes fifteen pages of heavy paper. Each page contains pockets for holding 24 strips of film (three pictures per strip) .....	<b>3.00</b>
<b>57,020</b> ULSBY	<b>Extra Pages</b> , for use in file No. 57,010.....each	<b>.38</b>
<b>57,030</b> FULLS	<b>LEICA Film Index</b> , containing transparent pockets for holding 36 LEICA negatives cut in strips of three negatives .....	<b>.36</b>
<b>57,040</b> LOOSE	<b>Loose-Leaf File</b> with transparent pockets to hold films in strips of six containing 20 pages, one page accommodates one roll of film .....	<b>3.60</b>



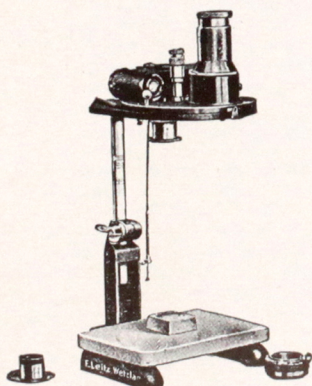
## STEREO APPARATUS

Cat. No. and Code Word		Price
<b>57,200</b> VOSTN	<b>STEREOLY Attachment</b> , for taking stereo pictures with the LEICA models D, F or G, <b>in case</b> (U. S. Patent 1,851,317) .....	<b>\$45.60</b>
<b>57,210</b> VORSA	<b>STEREOLY Attachment</b> , for taking stereo pictures with the LEICA models A, C or E, <b>in case</b> (U. S. Patent 1,851,317) .....	<b>45.60</b>
<b>57,230</b> VOTRA	<b>STEREO Viewer</b> , for LEICA pictures, taken with the STEREOLY Attachments No. 57,200 or No. 57,210, without stand, <b>in case</b> .....	<b>49.05</b>
<b>57,240</b> VOTIV	<b>Stand</b> , serving as support for Stereo Viewer No. 57,230 .....	<b>4.95</b>
<b>57,250</b> FLATE	<b>Stereo Slide Bar</b> , for use when making two separate LEICA negatives .....	<b>7.05</b>

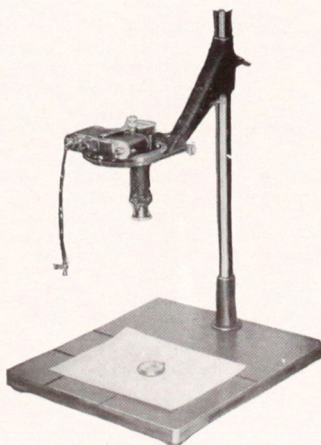
(SEE PAGE 61 FOR STEREO COVER GLASS PLATES.)

NOTE: FOR COMPLETE DETAILS ABOUT STEREO ACCESSORIES ASK FOR BOOKLET NO. 7428.

## COPY AND REPRODUCTION APPARATUS



No. 57,300  
With Magnifier No. 57340  
Attached to Stand No. 57,460



No. 57,300 with No. 57,310  
attached to upright and  
baseboard of enlarger.

Cat. No. and Code Word		Price
<b>57,300</b> OORES	<b>Rotating Focusing Copying Attachment</b> , consisting of Rotating Stage which holds the LEICA Camera and ground glass focusing screen with calibrated clear glass strip .....	<b>\$47.60</b>
	NOTE: THE COPY ATTACHMENT NO. 57,300 CAN BE FOCUSED AT ANY DISTANCE INCLUDING INFINITY.	
<b>57,310</b> GOORM	<b>Sliding Arm</b> , for attaching the Rotating Focusing Copying Attachment No. 57,300 to upright of enlarger .....	<b>15.40</b>
<b>57,320</b> GRBOO	<b>Focusing Copying Attachment</b> , similar to No. 57,300 but with a dove-tailed slider arrangement, for use with LEICA model FF.....	<b>49.05</b>
<b>57,330</b> COARM	<b>Sliding Arm</b> , for attaching the focusing copying attachment No. 57,320 to upright of enlarger.....	<b>15.40</b>
	NOTE: THE FOCUSING COPYING ATTACHMENTS NOS. 57,300 AND 57,320 TOGETHER WITH THE SLIDING ARMS CAN BE ATTACHED TO THE VERTICAL UPRIGHT OF THE LEICA UNIVERSAL ENLARGERS. IF AN ENLARGER IS NOT AVAILABLE, THE BASEBOARD AND UPRIGHT MAY BE PURCHASED SEPARATELY.	
<b>57,340</b> LOOCG	<b>Focusing Magnifier 5X</b> , for use on Copying Attachments Nos. 57,300, 57,320, 57,600, 57,605, 57,610 and 57,615 .....	<b>8.40</b>
<b>57,350</b> LOOFV	<b>Large Wide-field Focusing Magnifier 5X</b> , permitting to view the entire field of the image at one glance, for use on copying attachments Nos. 57,300, 57,320, 57,600, 57,605, 57,610 and 57,615.....	<b>17.50</b>
<b>57,352</b> LOOGI	<b>Large Wide Field Angular Focusing Magnifier 5X</b> , similar to No. 57,350, but with reflecting mirror permitting to view the ground glass focusing screen in horizontal direction .....	<b>24.50</b>
<b>57,355</b> LOOHW	<b>Focusing Magnifier 30X</b> , for increased exactitude in the focusing, for use on copying attachments Nos. 57,300, 57,320, 57,605 and 57,615.....	<b>16.80</b>
<b>57,360</b> ZWT00	<b>Intermediate Focusing Mount</b> for conveniently focusing the 50mm ELMAR lens when used with copying attachments Nos. 57,300 and 57,320. With this focusing mount the lens can be focused at any distance between $\infty$ and 16.5 in. At 16.5 in. the reduction is 1/6 .....	<b>10.50</b>
<b>57,365</b> ZWT00- HESUM	<b>Intermediate Focusing Mount</b> , same as No. 57,360, but for use with HEKTOR and SUMMAR lenses....	<b>10.50</b>
<b>57,370</b> BOOXG	<b>Extension Tube (7mm) "B"</b> , giving reductions of from 1/3 to 1/2.5, or in conjunction with intermediate focusing mounts Nos. 57,360 and 57,365, from 1/5 to 1/4. For use on Nos. 57,300 and 57,320.....	<b>1.40</b>
<b>57,380</b> MOOBG	<b>Extension Tube (16mm) "M.1:2"</b> , giving reductions in the ratio of 1/2. For use on Nos. 57,300 and 57,320.	<b>1.80</b>
<b>57,390</b> MOODH	<b>Extension Tube (24.5mm) "M.1:1.5"</b> , giving reductions in the ratio of 1/1.5. For use on Nos. 57,300 and 57,320 .....	<b>2.10</b>



Cat. No. and Code Word		Price
<b>57,400</b> MOOGW	<b>Extension Tube (41mm) "M.1:1"</b> , giving reproductions in natural size. For use on Nos. 57,300 and 57,320 .....	<b>\$2.40</b>
<b>57,405</b> TBK00	<b>Intermediate Adapter</b> with correction lens, for use with Nos. 57,300 and 57,320, when making photo-micrographs .....	<b>12.60</b>
<b>57,410</b> LSZ00	<b>Light-Excluding Ring</b> , for making light-tight connection between intermediate adapter No. 57,405 and microscope when making photo-micrographs with Nos. 57,300 and 57,320 .....	<b>5.55</b>
<b>57,412</b> COOED	<b>Special Short Focusing Mount</b> for the ELMAR 90mm lens for use with Nos. 57,300 and 57,320.....	<b>17.55</b>
<b>57,413</b> COOTL	<b>Special Short Focusing Mount</b> for the THAMBAR 90mm lens, for use with Nos. 57,300 and 57,320....	<b>17.55</b>
<b>57,414</b> COOHS	<b>Special Short Focusing Mount</b> for the ELMAR or HEKTOR 135mm lenses, for use with Nos. 57,300 and 57,320 .....	<b>21.00</b>
<b>57,415</b> MOORB	<b>Extension Tube</b> for the TELYT 200mm lens, for use with Nos. 57,300 and 57,320 .....	<b>3.90</b>

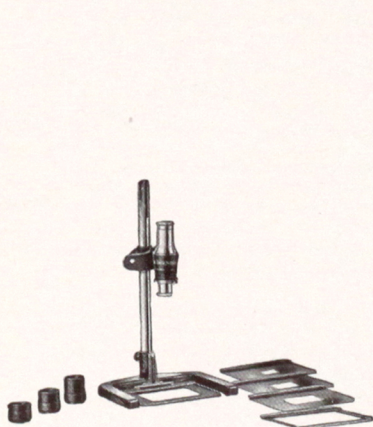
NOTE: WHILE IT IS QUITE SATISFACTORY TO USE THE 50mm LENSES FOR ORDINARY COPY WORK, SUCH AS REPRODUCTION OF MANUSCRIPTS, ETC., THE PERSPECTIVE CAN BE GREATLY IMPROVED BY USING ONE OF THE LONG FOCUS LEICA LENSES, ESPECIALLY WHEN PHOTOGRAPHS OF OBJECTS ARE TAKEN WHICH HAVE A CERTAIN DEPTH. THE 90 and 135mm LEICA LENSES WOULD NOT ALLOW OF FOCUSING AT ANY DISTANCE UP TO INFINITY WHEN USED IN THE FOCUSING COPYING ATTACHMENTS WITH THEIR STANDARD FOCUSING MOUNTS. FOR THIS REASON WE RECOMMEND THE **SPECIAL FOCUSING MOUNTS NOS. 57,412, 57,413 and 57,414**, WHICH CAN BE FOCUSED AT ANY DISTANCE UP TO INFINITY. FOR SHORTER DISTANCES AT GREATER MAGNIFICATIONS THEY ARE USED IN CONJUNCTION WITH ANY OF THE EXTENSION TUBES NOS. 57,370 to 57,400 and 57,635 to 57,670.

<b>57,420</b> RIOOZ	<b>Copying Ring Illuminator</b> , giving full, uniform illumination on small objects being copied with Nos. 57,300, 57,320, 57,600 and 57,610.....	<b>42.00</b>
<b>57,430</b> RFU00	<b>Regulating Rheostat</b> , 110-220-volt, fitted with ammeter, for use with ring illuminator No. 57,420.... NOTE: Rheostat No. 57,430 is required for use with Ring Illuminator No. 57,420.	<b>28.05</b>
<b>57,440</b> KBT00	<b>Electric Cord</b> , 5 ft. long, fitted with plugs.....	<b>2.70</b>
<b>57,450</b> ZSLOO	<b>Collapsible Upright Pillar</b> in three sections, total height 3 ft., including table clamp.....	<b>33.60</b>
<b>57,452</b> YQH00	<b>Further Intermediate Portions</b> (middle sections of the upright), 1 ft. long .....	<b>8.40</b>

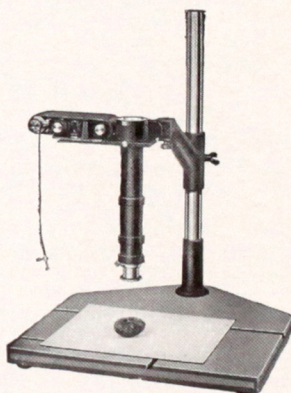
NOTE: The Collapsible Upright Pillar No. 57,450 serves for supporting the focusing copying attachments Nos. 57,300 and 57,320 in case the upright of an enlarger is not used. The copying devices are attached to the upright with the sliding arms Nos. 57,310 and 57,330. The intermediate portions serve for increasing the height of the upright.

<b>57,460</b> SP00V	<b>Special Horseshoe Stand</b> with clamping screw and supporting board, for the copying attachments Nos. 57,300 and 57,320 .....	<b>\$8.40</b>
<b>57,470</b> KG00N	<b>Large Ball and Socket Head</b> , similar to the regular LEICA ball and socket tripod head but larger and heavier, for attaching focusing copying attachments Nos. 57,300 and 57,320 to tripod when photographing with the camera and rotary stage in vertical position .....	<b>8.25</b>
<b>57,475</b> SPM00- D00SL	<b>Large Horseshoe Stand</b> with upright and supporting board for the copying attachments Nos. 57,300 and 57,320 .....	<b>25.20</b>

NOTE: THE COPYING ATTACHMENTS SHOULD BE ATTACHED TO STAND NO. 57,475 WITH THE SLIDING ARMS NOS. 57,310 or 57,330.



No. 57,675



No. 57,600 equipped with LEICA camera and extension tubes, attached by sliding arm No. 57,620 to upright with baseboard.



Cat. No. and Code Word		Price
<b>57,600</b> FULDY	<b>Sliding Focusing Copying Attachment, Model 1</b> , consisting of sliding attachment which holds LEICA Camera and ground-glass focusing screen.....	<b>\$24.75</b>
<b>57,605</b> COPIN	<b>Sliding Focusing Copying Attachment, Model 1</b> , same as No. 57,600, but with Special Focusing Screen which has a calibrated clear glass strip for critical focusing .....	<b>30.30</b>
<b>57,610</b> FULET	<b>Focusing Copying Attachment, Model 2</b> , similar to No. 57,600, but does not contain the sliding camera attachment. The ground-glass screen is manually removed to make space for the LEICA Camera. Other than the inconvenience involved, it produces the same results as No. 57,600.....	<b>13.50</b>
<b>57,615</b> COSLA	<b>Focusing Copying Attachment, Model 2</b> , same as No. 57,610, but with Special Focusing Screen which has a calibrated clear glass strip for critical focusing.....	<b>19.05</b>
<b>57,620</b> VEARM	<b>Sliding Arm</b> , for attaching LEICA and copying attachments Nos. 57,600 and 57,610 to upright of enlarger .....	<b>10.50</b>
NOTE: THE FOCUSING COPYING ATTACHMENTS TOGETHER WITH THE SLIDING ARM CAN BE ATTACHED TO THE VERTICAL UPRIGHT OF THE LEICA UNIVERSAL ENLARGERS. IF AN ENLARGER IS NOT AVAILABLE, THE BASEBOARD AND UPRIGHT MAY BE PURCHASED SEPARATELY.		
<b>57,630</b> LOOCG	<b>Magnifier 5X</b> with adjustable collar for Copy Attachments Models Nos. 1 and 2, as well as Nos. 57,300 and 57,320 .....	<b>8.40</b>
NOTE: ALSO SEE 30X MAGNIFIER NO. 57,355. WHEN THIS MAGNIFIER IS USED THE COPYING ATTACHMENTS NOS. 57,600 OR 57,610 SHOULD BE EQUIPPED WITH A SPECIAL FOCUSING SCREEN WHICH HAS A CALIBRATED CLEAR GLASS STRIP, at \$5.55 additional and an instalment charge of \$1.65. THE SLIDING FOCUSING COPYING ATTACHMENTS NOS. 57,605 and 57,615 HAVE A CALIBRATED CLEAR GLASS STRIP ON THE FOCUSING SCREEN.		
<b>57,635</b> FULOR	<b>1.2cm Extension Tube</b> , for use with Copy Attachments Nos. 57,300, 57,320, 57,600, 57,605, 57,610 and 57,615 and also the UDIMO Projectors.....	<b>1.80</b>
<b>57,640</b> UBECD	<b>2.2cm Extension Tube</b> , for use with Copy Attachments, Nos. 57,300, 57,320, 57,600, 57,605, 57,610 and 57,615, and also the UDIMO Projectors.....	<b>1.80</b>
<b>57,650</b> FULFO	<b>3cm Extension Tube</b> , for use with Copy Attachments, Nos. 57,300, 57,320, 57,600, 57,605, 57,610 and 57,615 .....	<b>2.10</b>
<b>57,660</b> FULGX	<b>6cm Extension Tube</b> , for use with Copy Attachments, Nos. 57,300, 57,320, 57,600, 57,605, 57,610 and 57,615 .....	<b>2.40</b>
<b>57,670</b> FULHI	<b>9cm Extension Tube</b> , for use with Copy Attachments, Nos. 57,300, 57,320, 57,600, 57,605, 57,610 and 57,615 .....	<b>3.00</b>
<b>57,675</b> OOZIS	<b>Collapsible Table Reproduction Device</b> , particularly useful when on trips and for work in archives, libraries, etc. It is comparatively small in size, light in weight and when collapsed very convenient to carry. This reproduction device consists of a horse-shoe base with upright; mounted to the latter is an arm permitting vertical adjustment. A rod situated	

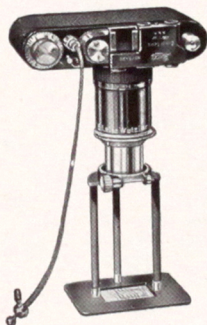
**Cat. No. and  
Code Word**

**Price**

parallel to the upright contains notches by means of which the sharp focus of lenses upon the specimen plane is facilitated, metal masks (of which five are included) indicate the area covered by various objectives at various distances. To facilitate the variation within the covered area, adapter rings (not included in this outfit, but listed separately below) are required to be placed between camera and objective .....

**\$36.60**

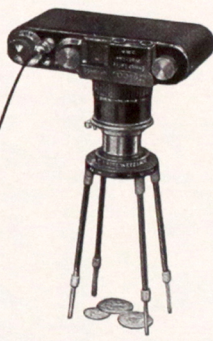
<b>57,676</b> 00ZKU	<b>Set of Five Adapter Rings</b> , of different lengths....	<b>13.95</b>
<b>57,730</b> ELPRO	<b>Front Lens I</b> , for ELMAR 50mm lens (covers areas from 16 9/16 x 24 13/16 to 8 9/16 x 12 7/8 in.).....	<b>7.05</b>
<b>57,740</b> ELPIK	<b>Front Lens II</b> , for ELMAR 50mm lens (covers areas from 8 7/16 x 12 5/8 to 5 5/8 x 8 1/2 in.).....	<b>7.65</b>
<b>57,750</b> ELPET	<b>Front Lens III</b> , for ELMAR 50mm lens (covers areas from 4 1/4 x 6 5/16 to 3 5/8 x 5 in.).....	<b>9.60</b>
<b>57,752</b> VMCOO	<b>Front Lens Adapter</b> , for accommodating ELMAR front lenses on SUMMAR 50mm f:2 lens No. 50,360	<b>1.05</b>
<b>57,800</b> FIRGI	<b>Adapter Ring</b> , for attaching LEICA filters on 50mm lenses when Front Lens is being used on camera lens .....	<b>.45</b>



No. 57,810



No. 57,890



No. 57,822

**57,810  
BELUN**

**Auxiliary Reproduction Device**, for LEICA with interchangeable ELMAR 50mm f:3.5 lens, for photographing small objects in natural size (1:1), consisting of an intermediate collar marked 1:1 and tripod with baseplate and clamping collar.....

**12.75**



**Cat. No. and  
Code Word**

**Price**

<b>57,815</b> BESUM	<b>Auxiliary Reproduction Device</b> , same as No. 57,810, but for SUMMAR 50mm, f:2 lens.....	<b>\$12.75</b>
<b>57,822</b> BEHOO	<b>Auxiliary Reproduction Device</b> for the LEICA Camera with interchangeable lenses ELMAR, HEKTOR or SUMMAR 50mm focus, for photographing small objects in slightly reduced size (scale 1:1½, 1:2 and 1:3), consisting of three different intermediate collars marked 1:1½, 1:2 and 1:3, universal clamping ring and four adjustable legs, with bands indicating distances (white bands for ELMAR and HEKTOR and yellow bands for SUMMAR lenses) ..	<b>18.00</b>
<b>57,862</b> BEOOY	<b>Setting Device</b> , for the LEICA Camera, with interchangeable lenses ELMAR, HEKTOR or SUMMAR 50mm focus in connection with supplementary front lenses Nos. 2 or 3, consisting of clamping ring and four adjustable legs, with bands indicating distances (white bands for ELMAR and HEKTOR and yellow bands for SUMMAR lenses).....	<b>9.00</b>
<b>57,884</b> BAZOO	<b>Universal Focusing Arrangement</b> , which combines in itself the working possibilities of the devices BEHOO No. 57,822 and BEOOY No. 57,862, consisting of a universal clamping ring which fits the two sets of extension legs for the BEHOO and BEOOY attachments, three intermediate extension tubes with markings 1:1.5, 1:2 and 1:3 and four auxiliary rods, with bands indicating distances (white bands for ELMAR and HEKTOR and yellow bands for SUMMAR lenses) .....	<b>25.50</b>
<b>57,890</b> BELOS	<b>Small Illuminating Lamp</b> , with 25-watt lamp for direct connection (please state voltage).....	<b>10.50</b>
<b>NOTE: FOR COMPLETE DETAILS ABOUT THE AUXILIARY REPRODUCTION DEVICES ASK FOR BOOKLET 7207a.</b>		

## PHOTOMICROGRAPHIC ACCESSORIES

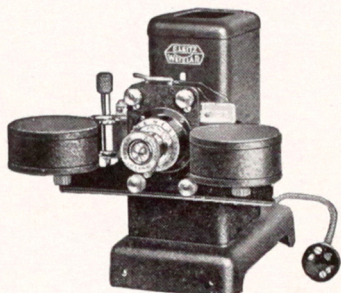
<b>58,300</b> MIOOP	<b>Micro Adapter</b> , for attaching LEICA Camera to draw-tube of microscope .....	<b>3.90</b>
<b>58,310</b> MIKAS	<b>Micro Ibo Attachment</b> , for the LEICA Camera for use in taking photographs through the microscope. This attachment is equipped with an extension tube, Compur shutter, reflecting focusing magnifier, Periplan 10 X eyepiece and two wire cable releases, complete in case .....	<b>56.00**</b>

## FILM AND SLIDE PRINTING APPARATUS

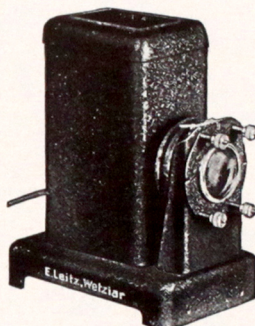
<b>59,000</b> ELDUR	<b>LEICA Positive Printing Apparatus</b> , for LEICA glass diapositives 50 x 50mm.....	<b>19.65</b>
<b>59,010</b> ELDIA	<b>ELDIA Printing Apparatus</b> , for printing paper or film strips from LEICA negatives, complete with window for LEICA negatives ( <i>U. S. Patent 1,796,258</i> ) .....	<b>19.65</b>
<b>59,110</b> USTOL	<b>Paper Slide Masks</b> , aperture 24 x 36mm, for use with standard 50 x 50mm glass slides. One side is coated with a special tin-foil compound which deflects the heat from the lamp house and protects the slide from excessive heat, per hundred.....	<b>2.10</b>
<b>59,120</b> ULSMA	<b>LEICA (Medium) 50 x 50mm Lantern Plates</b> , for black tones. Grade A glass.....per dozen	<b>.44**</b>

Cat. No. and Code Word		Price
59,130 ULSOB	LEICA (Contrast) 50 x 50mm Lantern Plates, for black tones. Grade A glass.....per dozen	\$ .44**
59,140 UGLAS	Cover Glass Plates, 35 x 120mm, for mounting three stereo pictures or three lantern slides...per hundred	3.45
59,150 UGLIT	Cover Glass Plates, 50 x 50mm, for glass positives.....per hundred	2.85
59,155 LANCA	Case for LEICA Lantern Slides, capacity 100 slides 50 x 50mm .....	1.95
59,160 UMASK	Black Paper Masks, 50 x 50mm with 24 x 36mm aperture .....	.90
59,170 UMKLE	Gummed Paper, for glass positives, 250 ft. long.....per roll	.60
59,175 CELLU	Scotch Cellulose Binding Tape, 2592 in. per roll, ½ in. wide, black. (This tape is opaque and makes a very smooth and attractive slide binding material.) Packed two rolls per can.....per roll	2.05
59,176 CERED	Scotch Cellulose Binding Tape, same as No. 59,175, but red.....per roll	2.05

## PROJECTION APPARATUS



No. 59,300  
with No. 59,700 attached



No. 59,370

NOTE: WHEN ORDERING ANY OF THE UDIMO PROJECTORS, IT IS NECESSARY TO SPECIFY THE CORRECT INTERCHANGEABLE CONDENSER WHICH IS REQUIRED. THE PROJECTORS ARE ALL LISTED WITHOUT THE INTERCHANGEABLE CONDENSERS NOS. 59,710 TO 59,745 AND ALSO WITHOUT THE ADDITIONAL FILM AND GLASS SLIDE ACCESSORIES WHICH ARE ALL LISTED SEPARATELY. WITH THIS LISTING, IT IS VERY EASY TO BUILD UP A PROJECTOR TO MEET ANY PROJECTION REQUIREMENTS.

59,300  
BCDUU

**UDIMO 100 Projector**, with standard 100-watt G. E. Mazda Projection bulb, reflector, two stationary condenser lenses of 52.5mm diameter, removable heat absorption filter, support for revolving front attachment, accommodates all UDIMO accessories interchangeably, with window shutter permitting reading or making notes in darkened auditoriums during projection, 8 ft. cord with switch and plug connections but **without** interchangeable condenser and attachments ..... **54.00**

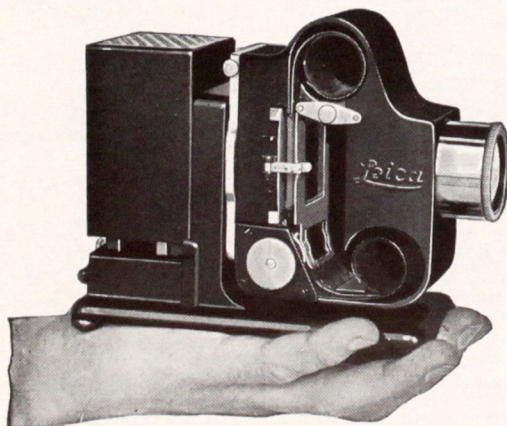


Cat. No. and Code Word		Price
<b>59,310</b> UBBBC	<b>Milk Glass Disc</b> , for UDIMO 100 Projector. This disc, which replaces the heat absorption filter No. 59,350, permits the projector to be used as an enlarger. The Milk Glass diffuses and softens the concentrated light in the projector.....	<b>\$ 2.10</b>
	NOTE: EXTENSION TUBE (2.2cm), NO. 57,640, IS REQUIRED FOR USE WITH THE UDIMO PROJECTORS WHEN MAKING ENLARGEMENTS.	
<b>59,330</b> UDAVI	<b>Carrying Case</b> , of non-warping wood, for carrying the UDIMO 100, No. 59,300 Projector and small accessories .....	<b>9.00</b>
<b>59,370</b> BCUUA	<b>UDIMO 250 Projector</b> , with standard 250-watt OS-RAM projection bulb, lamp house of improved and enlarged design, special condenser lens, accommodates all UDIMO accessories interchangeably. This model is useful for halls and projection where an intense illumination is necessary as for example, when projecting natural color slides, with window shutter permitting reading or making notes in darkened auditoriums during projection. <b>Without</b> interchangeable condenser and attachments.....	<b>69.00</b>
<b>59,390</b> BSIUU	<b>Carrying Case</b> , for UDIMO 300 Projector.....	<b>14.10</b>
<b>59,400</b> BDFUU	<b>UDIMO 400 Projector</b> , with standard 400-watt OS-RAM projection bulb, special large lamp house, water-cooled type heat absorption filter; accommodates all UDIMO accessories interchangeably. This Projector is designed for large halls and auditoriums, for extra large screen images and natural color projection where the maximum of illumination is necessary, with window shutter permitting reading or making notes in darkened auditoriums during projection. <b>Without</b> interchangeable condenser and attachments .....	<b>105.00</b>
<b>59,410</b> MIUUP	<b>UDIMO 750 Projector</b> , with standard 750-watt OS-RAM projection bulb similar to No. 59,400 but with special large and well-ventilated lamp housing, water-cooled heat absorption filter; accommodates all UDIMO accessories interchangeably. This projector is designed for the maximum possibilities in projection such as in large halls and auditoriums, and where dense natural color pictures are to be reproduced in huge proportions upon the screen. This projector represents the utmost in projection equipment, and as such will fill a definite need in professional and visual educational projection, with window shutter permitting reading or making notes in darkened auditoriums during projection. <b>Without</b> interchangeable condenser and attachments....	<b>192.00</b>
<b>59,425</b> BUUCF	<b>Carrying Case</b> , for UDIMO 500 or 750 Projectors and rheostat .....	<b>19.50</b>
<b>THE FOLLOWING ACCESSORIES ARE INTER-CHANGEABLE ON ALL PROJECTORS:</b>		
<b>59,700</b> UKEDU	<b>LEICA Film Attachment</b> , for interchangeable use of LEICA lenses, removable fire-protection drums, film sliding gate with 24 x 36mm window.....	<b>21.90</b>
<b>59,702</b> SERUU	<b>LEICA Film Attachment</b> , similar to No. 59,700, however equipped with special film drums of large capacity (20m film) .....	<b>37.50</b>

Cat. No. and Code Word		Price
<b>59,704</b> ATTAC	<b>LEICA Film Attachment</b> , for the special DIMAX projection lenses Cat. Nos. 59,881, 59,883 and 59,885, with removable fire protection drums and film sliding gate with 24x36mm window for use on UDIMO Projectors Nos. 59,400 and 59,410.....	<b>\$21.90</b>
<b>59,706</b> HMENT	<b>LEICA Film Attachment</b> , similar to Cat. No. 59,704, however equipped with special film drums of large capacity (20m film) .....	<b>37.50</b>
<b>59,710</b> BRUUM	<b>Interchangeable Condenser</b> , marked "5" for use with SUMMAR, HEKTOR, and ELMAR 50mm lenses. For UDIMO-100 and UDIMO-300 projectors only.....	<b>4.65</b>
<b>59,715</b> DLUWU	<b>Interchangeable Condenser</b> , marked "5" for use with SUMMAR, HEKTOR, and ELMAR 50mm lenses. For UDIMO-500 and 750 projectors .....	<b>4.65</b>
<b>59,720</b> UDAKI	<b>Interchangeable Condenser</b> , marked "7.3-8-9" for use with LEICA lenses HEKTOR 73mm, ELMAR 90mm and special projection lens MILAR 80mm focus .....	<b>4.65</b>
<b>59,730</b> UBIKU	<b>Interchangeable Condenser</b> , marked "10.5-12-13.5-15" for use with LEICA lenses ELMAR 105mm, ELMAR and HEKTOR 135mm, and special projection lenses DIMAX 120mm, and 150mm focus.....	<b>4.65</b>
<b>59,745</b> UUPMI	<b>Interchangeable Condenser</b> , marked "20-25", for use with special projection lenses DIMAX 200mm and 250mm focus .....	<b>4.65</b>
<b>FILM AND GLASS SLIDE SLIDING GATES</b>		
<b>59,810</b> AFUUV	<b>Film Sliding Gate</b> , with window, for standard size 18 x 24mm .....	<b>10.95</b>
<b>59,820</b> AKUUR	<b>Glass Slide Sliding Gate</b> , with round aperture of 43mm diameter for LEICA glass positives 50 x 50mm .....	<b>1.65</b>
<b>59,830</b> AWUUE	<b>Glass Slide Sliding Gate</b> , with round aperture of 48mm diameter for positives 30 x 40mm, mounted between glass plates 50 x 50mm.....	<b>1.65</b>
<b>59,840</b> AGNUU	<b>Glass Slide Sliding Gate</b> , with square aperture of 24 x 36mm for LEICA positives, mounted between glass plates measuring 35 x 120mm.....	<b>1.65</b>
NOTE: ALL SLIDING GATES CAN BE USED IN THE FILM ATTACHMENTS NOS. 59,700, 59,702, 59,704, 59,706, AND THE GLASS SLIDE ATTACHMENTS NOS. 59,890 and 59,892.		
<b>59,850</b> UBECD	<b>Extension Tube</b> (length 22mm), for UDIMO Projectors. This tube places LEICA lenses in position for projecting pictures at close distances for reading or enlarging purposes.....	<b>1.80</b>
<b>59,860</b> UDOZU	<b>Base Tube</b> , for special projection lenses in which both the 80 and 120mm focus projection lenses can be used interchangeably. The tube is provided with thread so that it can be screwed to the front of the projector .....	<b>6.30</b>
<b>59,870</b> UDA0B	<b>Special Projection Lens MILAR</b> , of 80mm focus, for use in conjunction with base tube No. 59,860 in Leica film attachments 59,700, 59,702 and 59,890 in all Udimo Projectors .....	<b>20.10</b>
<b>59,880</b> UPE0B	<b>Special Projection Lens DIMAX</b> , of 120mm focus, for use in conjunction with base tube No. 59,860 in LEICA film attachments 59,700, 59,702 and 59,890 in all UDIMO Projectors .....	<b>31.20</b>
<b>59,880a</b> ULEUF	<b>Special Projection Lens DIMAX</b> of 150mm focus with focusing mount for UDIMO Projector No. 59,370. (This lens can be directly attached to LEICA film attachments Nos. 59,700, 59,702 or 50,800).....	<b>42.60</b>



Cat. No. and Code Word		Price
<b>59,881</b> MAXIV	<b>Special Projection Lens DIMAX</b> of 150mm focus, for use with Projectors Nos. 59,400 and 59,410.....	<b>\$46.20</b>
<b>59,883</b> MAXTO	<b>Special Projection Lens DIMAX</b> of 200mm focus, for use with Projectors Nos. 59,400 and 59,410....	<b>49.20</b>
<b>59,885</b> MAXAF	<b>Special Projection Lens DIMAX</b> of 250mm focus, for use with Projector No. 59,410.....	<b>52.20</b>
	NOTE: THE SPECIAL PROJECTION LENSES DIMAX NOS. 59,881, 59,883 AND 59,885 DO NOT INCLUDE THE BASE FILM OR GLASS SLIDE ATTACHMENT. THEY CAN ONLY BE USED WITH ONE OF THE SPECIAL FILM OR GLASS SLIDE ATTACHMENTS NOS. 59,704, 59,706 AND 59,892.	
<b>59,890</b> UBAFE	<b>Glass Slide Attachment</b> , for interchangeable use with LEICA lenses, including sliding gate with window for 50x50mm glass positive slides.....	<b>6.45</b>
<b>59,892</b> SLIDE	<b>Glass Slide Attachment</b> , for use with the special projection lenses DIMAX, Cat. Nos. 59,881, 59,883 and 59,885 .....	<b>6.45</b>
<b>59,900</b> UKLIB	<b>Slide Changer</b> , for LEICA glass slides 50 x 50mm. for use with Nos. 59,890, 59,892, 59,700 and 59,704..	<b>4.80</b>
<b>59,910</b> AFLUU	<b>Lower Plane Glass Plate</b> , with window 18 x 24mm for interchangeable use with the normal glass plate of the film sliding gate No. 59,800 for LEICA size (24 x 36mm) .....	<b>2.70</b>
<b>59,920</b> USNAL	<b>Elevator Plate</b> (of metal), for tilting the Projectors Nos. 59,300, 59,370, 59,400 and 59,410.....	<b>1.95</b>

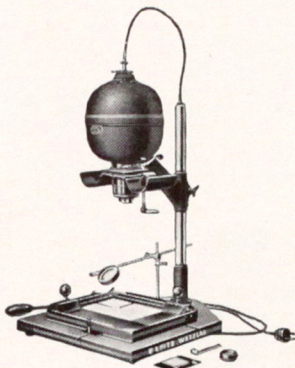


No. 60,000/60,010

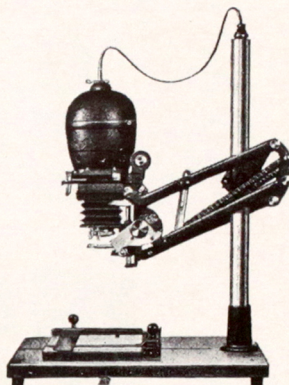
<b>60,000</b> UMINO	<b>LEICA UMINO Projector</b> , for use with single frame, double frame and 50 x 50mm glass slides, complete, including projection lens and 50-watt bulb, <b>without case</b> .....	<b>45.00</b>
<b>60,005</b> UMELA	<b>LEICA UMINO Projector</b> , same as No. 60,000 but equipped with front elevator attachment No. 60,018	<b>47.50</b>

Cat. No. and Code Word		Price
60,010 UMENA	LEICA UМЕНA Projector, same as No. 60,000, but including 100-watt projection bulb and heat absorption filter .....	\$47.50
60,015 UMATA	LEICA UМЕНA Projector, same as No. 60,010, but equipped with front elevator attachment No. 60,018	50.00
60,025 UMCAS	Leatherette Carrying Case, for UMINO Projector, with compartment for extra films or lamps.....	2.10
60,030 UMERN	Easel Desk Projection Screen, 16 x 16 in. with washable screen surface and cover.....	3.00
60,032 UMLED	Soft Leather Case, for Projection Screen No. 60,030	1.50

## ENLARGING APPARATUS



No. 60,300



No. 60,453

60,300 VALOY	<b>VALOY Universal Enlarging Apparatus</b> , for use with single frame, LEICA double frame and 3 x 4cm negatives, with lever for operating built-in pressure plate for holding negatives in flat plane, with 80cm upright pillar, 75-watt, 110-volt lamp, with thread permitting the use of LEICA lenses, but <b>without</b> lens or easel (paper holder).....	54.75
60,320 FYLT0	<b>Orange Filter</b> , for VALOY enlarger, to enable negative to be focused directly on sensitive paper.....	9.60
60,450 VIW00	<b>FOCOMAT Enlarger</b> , autofocusing enlarging for single frame, LEICA double frame and up to 4 x 4cm negatives. Similar to VALOY enlarger in design and operation, but has provision for automatic focus. Supplied with baseboard, 16 x 21 in.; adjustable focusing clamps for various settings when using films singly or in strips. LEICA 50mm lenses may be used. Adjustable lamp base, complete, with 75-watt, 110-volt lamp, metal masking plate for double frame negatives, lamp housing, metal upright pillar 80cm height, threaded focusing mount for receiving lens, but <b>without</b> lens and enlarging easel .....	96.00



Cat. No. and Code Word	Price
<b>60,452</b> VUT00	<b>FOCOMAT Enlarger</b> , similar to No. 60,450, however, equipped with baseboard 22x25.5 in. and upright measuring 120cm, <b>without lens and enlarging easel</b> <b>\$124.50</b>
<b>60,453</b> VOOWI	<p><b>FOCOMAT Enlarger</b>—large model—in general construction similar to No. 60,450, but serves for all negative sizes up to 6.5x9cm, supplied with baseboard 21x26 in., upright 80cm, enlarging lens 95mm focus f:4 for negative sizes 4x4cm to 6.5x9cm; any of the standard LEICA objectives 50mm, likewise the special ELMAR enlarging lens No. 61,360 may be used for negative sizes up to 4x4cm; however, it is to be borne in mind that the 50mm lenses do not fully cover the negative size 4x4cm. The automatic focus covers with lens 95mm a magnification from 1.8X to 6X, while with lens 50mm it covers magnifications from 2X to 13X. Through adjustment by hand, a magnification of 1.4X to 9X is obtainable for the 95mm lens, and up to 18X for the 50mm lenses. The novel film holding device simplifies working considerably and protects film against damage, assuring at the same time especially rapid change from one negative to another when working with uncut film strips without the film having to be removed from the apparatus. The film ends projecting from either side lie in film troughs and are thus safe against accidental damage. The film holding mechanism consists of a hinged frame with two glass plates to hold the film flat. When the film is to be moved on, the upper plate is lifted by means of an eccentric lever. Adjustable guides insure that negatives of various sizes are always central in the optical axis. Enlarger complete, with masking negative carrier plate for 24x36mm and 65x90mm sizes, and special ELMAR enlarging lens 95mm focus, f:4, <b>without easel</b> ..... <b>292.50</b></p> <p>NOTE: THE FOCOMAT ENLARGERS NOS. 60,450, 60,452 AND 60,453 AND VANOS Enlargers Nos. 60,581 and 60,583 ARE PROVIDED WITH BASEBOARDS WHICH ACCOMMODATE THE NEW "QUICK-ACTION" CLAMP WHICH IS A FEATURE OF THE ENLARGING EASEL NO. 61,323. BY MEANS OF A SINGLE MOVEMENT OF A METAL LEVER, THE EASEL IS EITHER FASTENED SECURELY OR LOOSENED FOR MOVING AND ADJUSTING ON THE BASEBOARD. THIS CONVENIENCE WILL BE ESPECIALLY WELCOMED BY COMMERCIAL FINISHERS AND THOSE WHO HAVE CONSIDERABLE ENLARGING TO DO WHERE VARIOUS SIZES AND AREAS OF PRINTS ARE WANTED. THIS NEW CLAMPING DEVICE DOES NOT PRECLUDE THE USE OF ANY OTHER TYPE OF ENLARGING EASEL.</p> <p>(FOR LISTING OF SPECIAL ELMAR ENLARGING LENS 50MM FOCUS, REFER TO NO. 61,360.)</p> <p><b>Orange Filter</b>, for FOCOMAT Enlarger No. 60,450.. <b>8.10</b></p> <p><b>Orange Filter</b>, for FOCOMAT Enlarger No. 60,453.. <b>10.50</b></p> <p><b>VANOS Enlarger</b>, for enlarging all negative sizes from LEICA 24x36mm to 65x90mm with novel film holding device, same as supplied with FOCOMAT enlarger No. 60,453. The lamp housing is roomy</p>
<b>60,460</b> FYSTY	
<b>60,465</b> FY00N	
<b>60,581</b> VYB00	

♣—Not ready for immediate delivery.

and well ventilated. A special 95mm focus enlarging lens with a speed of f:4 is supplied in focusing mount. This lens may be unscrewed and replaced with a standard ELMAR, HEKTOR, or SUMMAR 50mm LEICA camera lens when enlargements from LEICA negatives are contemplated. The 95mm lens is to be used when making enlargements from vest-pocket and 65 x 90mm negatives, while the LEICA 50mm lens is suggested when enlarging LEICA negatives because of the more favorable working distance afforded. The enlarger unit of this enlarger is counterbalanced by means of a weight which is attached by steel cables. The raising and lowering of the unit is thus made very easy and smooth. Furthermore, a ratchet device is built into the metal upright pillar which securely locks the unit in any position after raising or lowering it to conform to any given projected image size. (For further details, please write to the Service Department of E. Leitz, Inc.) VANOS enlarger complete, with baseboard 16x20 in., metal upright 86cm pillar, enlarging unit consisting of lamp house, 75-watt opal lamp, double glass plate negative carrier, special 95mm enlarging lens with speed of f:4, which is interchangeable with LEICA camera lenses, and counterbalanced mechanism, **without enlarging easel** .....

\$189.00

60,590  
FYLR

**Orange Filter**, in swinging mount for use on the VANOS Enlarger .....

9.60

60,670  
GLSI

**Hinged Double Glass Plate**, 3.5x17cm, for LEICA negative film, especially recommended for single negatives, for use with Enlargers Nos. 60,453, 60,581 and 60,583 .....

2.10

60,840  
VOBIT

**Special Diffusing Condenser** for use with the Enlargers Nos. 60,300, 60,450, 60,452, 60,453, 60,581 and 60,583 when employing Photoflood bulbs.....

6.60

60,845  
VORYM

**Special Ventilating Ring** for use with Enlargers Nos. 60,110, 60,300, 60,450, 60,452, 60,453, 60,581 and 60,583 when employing Photoflood bulbs.....

6.60

60,850  
RHEOS

**Photoflood Rheostat Control**, for controlling illumination in enlarger when using Photoflood lamp. Dial calibrated from "0" to "100" giving percentage of brilliancy. Operates on either A. C. or D. C. 110-volt current. Conforms to all specifications of Fire Underwriters' Board. Complete, ready for use.....

7.50

The Photoflood lamps can only be used in connection with the Special Diffusing Condenser No. 60,840. This condenser is placed inside of the illuminating head on top of the regular illuminating condenser. The Photoflood bulb always requires the use of the Special Ventilating Ring No. 60,845 which is placed between the upper and lower hemispheres of the lamp housing.

## ENLARGER EASELS AND ACCESSORIES

61,310  
FELIS

**Enlarging Easel**, for VALOY Enlarger for paper sizes up to 8x10 in., with metal masking bands. Maximum picture area 6½x8½ in.....

17.40

61,320  
FELUK

**Enlarging Easel**, for paper sizes up to 11 x 14 in., with metal masking bands. Maximum picture area 9x11 in. ....

20.70



<b>Cat. No. and Code Word</b>		<b>Price</b>
<b>61.323</b> FPY00	<b>Enlarging Easel</b> , with grooves at lower surface for attaching to the baseboard clamp of FOCOMAT Enlargers Nos. 60,450 and 60,453, and VANOS 60,581, for paper sizes up to 11 x 14 in., with metal masking bands, maximum picture area 9 x 11 in.....	<b>\$23.40</b>
<b>61.326</b> FS00T	<b>Enlarging Easel</b> , for paper sizes up to 16x20 in., with metal masking bands. Maximum picture area 13x17 in., for Enlargers Nos. 60,452, 60,453 and 60,583	<b>61.50</b>
<b>61.350</b> VEKIP	<b>Metal Bracket</b> , with step arrangement, for holding enlarging easel in tilted position to overcome distortion in negative .....	<b>1.50</b>
<b>61.352</b> ZR100	<b>Distortion Eliminating Device</b> , for the elimination of objectionable distortion in the negative, when making enlargements. When the camera is tilted distortion is produced in the negative. The shorter the focal length of the lens the greater is the amount of such distortion. This can be corrected in printing by tilting the negative in the enlarger, and the Distortion Eliminating Device enables this to be done. This device can be used in conjunction with Auxiliary Baseboards Nos. 61,353 and 61,354, or Metal Bracket with step arrangement No. 61,350, which allow the easel to be tilted, enabling greater correction. The Distortion Eliminating Device consists of a frame which can be inserted into the film carrier of Enlargers Nos. 60,100, 60,110, 60,300, 60,450, and 60,452. A hinged double glass plate negative carrier which holds the negative is held in position by two clips on the device. The double glass plate negative carrier can be tilted in various directions to overcome the distortion in the negative (not including hinged glass plate No. 60,670 which is recommended for use with this device) .....	<b>18.00</b>
<b>61.353</b> GOOBR	<b>Auxiliary Baseboard</b> , with ball-jointed head, to serve for tilting of enlarging easels, suitable for use with enlargers Nos. 60,300, 60,581 and 60,583....	<b>18.00</b>
<b>61.354</b> GOOFT	<b>Auxiliary Baseboard</b> , same as No. 61,353, however for use with enlargers Nos. 60,450 and 60,453.....	<b>20.40</b>
<b>61.355</b> YOOBN	<b>Threaded Flange</b> , for attaching to enlarging easels by means of which the easels can be mounted to the ball-jointed head of baseboards Nos. 61,353 and 61,354 .....	<b>2.70</b>
<b>61.360</b> VAROB	<b>Special 50mm ELMAR Lens</b> , with iris diaphragm, for use on all LEICA Enlargers. <b>This lens cannot be used on the LEICA Camera</b> .....	<b>35.25</b>
<b>61.370</b> VULPE	<b>Adjustable Magnifying Glass</b> , for critical focusing of image with enlargers .....	<b>17.55</b>

## LEICA LITERATURE

**LEICA PHOTOGRAPHY**, monthly publication issued free of charge to all LEICA owners, and \$1.00 to non-LEICA owners. \$2.00 yearly subscription to all others outside the United States. Edited by Augustus Wolfman.

The following books are obtainable from all photographic dealers or direct from E. Leitz, Inc.:

<b>63,010</b> LIMAN	<b>"The LEICA Manual"</b> , a book for the amateur and professional LEICA worker, edited and published by Willard D. Morgan and Henry M. Lester. Contributed chapters by over twenty experts in various branches of LEICA photography; over 500 pages containing the most complete information covering the field of LEICA photography; cloth binding, profusely illustrated .....	<b>\$4.00</b>
<b>63,020</b> MITRI	<b>"How To Use Your Candid Camera"</b> , by Ivan Dmitri, illustrated with about 70 photographs, cloth bound.	<b>3.50</b>
	<b>"Developing, Printing and Enlarging LEICA Pictures"</b> , by W. D. Morgan, 60 pages, paper covered, illustrated .....	<b>.25</b>
	<b>"The LEICA in Science"</b> , by W. D. Morgan, 68 pages, paper covered, illustrated .....	<b>.25</b>

The following literature is supplied free of charge by E. Leitz, Inc.:

<b>No. 1215</b> —Quick Reference Data for LEICA	<b>No. 1238</b> —The Miniature Camera in Visual Instruction
<b>No. 1222</b> —The LEICAFLASH Equipment	<b>No. 1240</b> —LEICA Manual
<b>No. 1223</b> —The REELO and CORREX Developing Equipment	<b>No. 1241</b> —The LEICA Developing Tank Agitator
<b>No. 1230</b> —UMINO Projectors	<b>No. 1245</b> —Accessories for your LEICA
<b>No. 1231</b> —Slow Timing Device	<b>No. 1246</b> —Weston LEICAmeter
<b>No. 1233</b> —LEICA Photo Finishers	<b>No. 1248</b> —Rapid Winder
<b>No. 1237</b> —The LEICA Comes of Age	<b>No. 1250</b> —Thambar Lens
	<b>No. 7567</b> —Telyt Lens
	<b>No. 7568</b> —HEKTOR Wide Angle Lens

68

*Picture at right:* —Capture the expressions of your pets with the LEICA—ELMAR f:3.5, 50mm lens, stop 6.3, 1/60 sec., Agfa-Isochrom-Film.  
LEICAphoto by H. Stoeckler.

*Back Cover Composition:* Photographs on the following page are the work of LEICA photographers, Alan Mowbray, Dr. Charles Proctor, Ivan Dmitri, Hans Kloss, Rockwell Kent, Tom Evans, M. G. M. Studios, Michael Helkin and Peter Stackpole.



