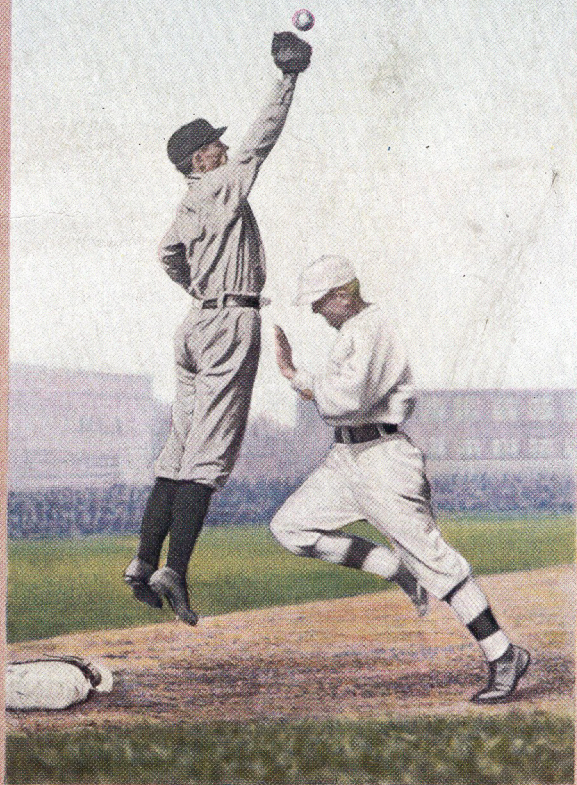


# GRAFLEX CAMERAS



**GRAFLEX**  
**AND**  
**GRAPHIC**  
**CAMERAS**

1919

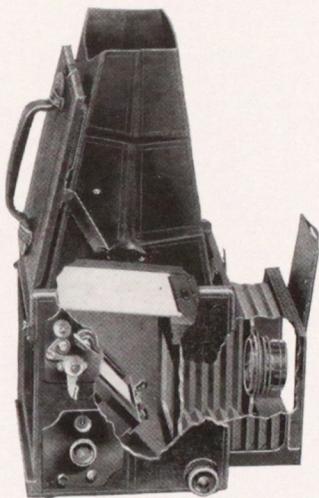
Folmer & Schwing Department  
Eastman Kodak Company  
Rochester, N. Y.



## THE GRAFLEX

A REFLECTING camera that lets your eye see what the lens sees before exposure, assuring increased pleasure and certainty in picture making.

Looking into the focusing hood, the operator sees a brilliant image of the subject upon the focusing screen, right side up, in



Sectional View of Graflex

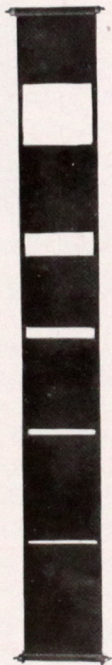
full picture size, and accurately adjusts the focus and composition up to the very instant the shutter release is pressed. This method of focusing makes it unnecessary to estimate the distance between camera and subject.

The illustration shows the interior construction of the Graflex and how the image

projected by the lens is reflected from the mirror to the ground glass screen in the top of the camera.

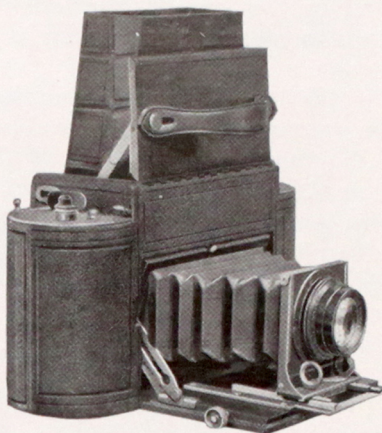
The Graflex Focal Plane Shutter, built into the camera, may be operated at automatic speeds ranging from  $\frac{1}{10}$  to  $\frac{1}{1000}$  of a second, as well as time exposures of any duration, providing for an extreme variety of photographic subjects and lighting conditions. The Graflex Focal Plane Shutter consists of a long curtain with a number of fixed apertures of varying width. The duration of exposures is regulated by the width of the aperture and the rapidity of its movement across the exposing aperture at the back of the camera. This shutter permits the lens to work at its full efficiency throughout the period of exposure, assuring well timed negatives when working under unfavorable light conditions, or when high shutter speeds are used.

The Graflex is made with the utmost precision, from the best materials, and is subjected to a rigid inspection and test before being placed on the market. The rich appearance of the Graflex is fully in keeping with its mechanical excellence. The body of the camera is made of mahogany covered with Morocco Leather. All uncovered wooden parts are ebonized, and all metal parts have a rich gun metal finish.



Graflex  
Shutter Curtain





## THE 1A GRAFLEX

### *Autographic*

#### SPECIFICATIONS

Outside dimensions, closed . . . . *	9½ x 3 x 5¼
Focal capacity . . . . .	6½ in.
Weight . . . . .	3¾ lbs.
Size of lens board . . . . .	2¼ x 2⅜ in.
Minimum focus of lens accommodated	4¾ in.

#### THE PRICE

	2½ x 4¼
1A Graflex without lens . . . . .	\$ 76.80
With Kodak Anastigmat Lens, f.4.5, No. 31	114.13
With B. & L. Kodak Anastigmat Lens, f.6.3, No. 2 . . . . .	101.86
With B. & L. Tessar Lens, Series Ic, f.4.5, No. 14 . . . . .	120.53
Leather Case for 1A Graflex . . . . .	7.50

*The prices of camera and lens equipments include  
the Excise War Tax.*

# THE 1A GRAFLEX

Folmer's Patent, February 5, 1907, and April 21, 1908

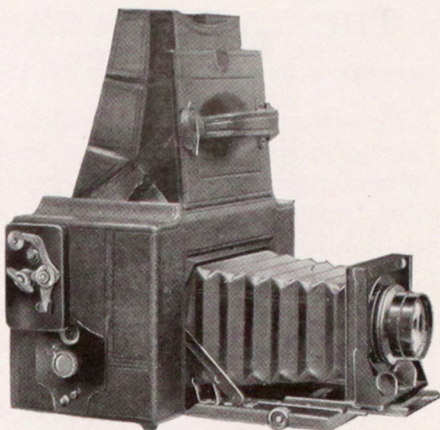
ALL the advantages of the Graflex reflecting principle, compactness and roll film convenience are embodied in this model of Graflex Cameras.

With the 1A Graflex, as with the other Graflex models, it is possible to see every picture the size it will appear in the finished print up to the instant of exposure, and to make exposures of any duration up to  $\frac{1}{1000}$  of a second. This camera is also fitted with a safety device which prevents the winding of the shutter curtain until the mirror is in position for focusing, preventing the unintentional fogging of film.

This camera takes the regular 1A Kodak Film of 6 or 12 exposures, and makes pictures of very pleasing proportions— $2\frac{1}{2} \times 4\frac{1}{4}$  inches. The Autographic feature, fitted to the camera back, enables the operator to write directly upon the Autographic Film, the date or other memorandum of every exposure at the time it is made, providing for the positive identification of any negative at any time. This permanent record of the exact date, or title, upon the negative, is frequently of value aside from the satisfaction of knowing the facts relative to every negative when an occasion arises for their use.

In order to make the camera as compact as possible the Focusing Screen of the 1A Graflex is made a trifle narrower than the full width of the negative; this does not interfere with accurate focusing.





## THE 3A GRAFLEX

### *Autographic*

#### SPECIFICATIONS

Dimensions . . . . .	10 x 5 x 6 $\frac{3}{8}$
Focal capacity . . . . .	10 in.
Weight . . . . .	7 lbs.
Size of lens board . . . . .	3 $\frac{1}{4}$ x 3 $\frac{1}{4}$ in.
Minimum focus of lens accommodated	6 $\frac{1}{2}$ in.

#### THE PRICE

	3 $\frac{1}{4}$ x 5 $\frac{1}{2}$
3A Graflex without lens . . . . .	\$ 90.67
With Kodak Anastigmat Lens, <i>f</i> .4.5, No. 33	144.00
With B. & L. Kodak Anastigmat Lens, <i>f</i> .6.3, No. 4 . . . . .	122.66
With B. & L. Tessar Lens, Series Ic, <i>f</i> .4.5, No. 15a . . . . .	153.07
Leather Case for 3A Graflex . . . . .	9.50

*The prices of camera and lens equipments include  
the Excise War Tax.*

# THE 3A GRAFLEX

Folmer's Patent, February 5, 1907, and April 21, 1908

**S**IMPLICITY of operation, the reflecting feature and roll film convenience, combine to make the 3A Graflex one of the most popular models of the Graflex line.

This camera makes  $3\frac{1}{4} \times 5\frac{1}{2}$  pictures, on regular 3A Kodak Film, which may be obtained wherever camera supplies are sold.

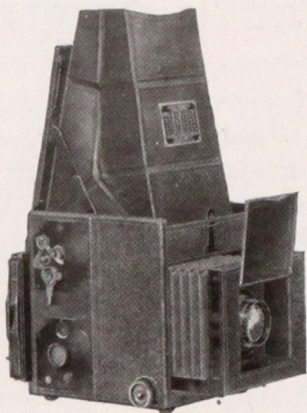
The Autographic feature, fitted to the 3A Graflex, enables the operator to write the date or any other necessary record for future reference directly upon the film, at the time the picture is made. This permanent record affords a relief from uncertainty and disappointment when positive identification of negatives is required.

Built into and part of the 3A Graflex, is the regular Graflex Focal Plane Shutter, giving instantaneous exposures from  $\frac{1}{10}$  to  $\frac{1}{1000}$  of a second, as well as time exposures of any duration. The front of the camera is exceedingly rigid and large enough to accommodate Anastigmat lenses working at the highest speed.

The focusing hood opens automatically when the cover of the camera is raised, and is detachable, to allow easy access to the ground glass screen when prolonged use makes cleaning necessary.

The surplus space at each side of the camera is converted into film storage pockets, each carrying two rolls of film. This permits the operator to carry in the camera sufficient film for fifty exposures.





# THE AUTO GRAFLEX

Folmer's Patent, February 5, 1907

## SPECIFICATIONS

	3 1/4 x 4 1/4	4 x 5	5 x 7
Dimensions when closed	5 3/4 x 5 3/8 x 6 1/4	6 3/4 x 6 1/4 x 7 1/4	9 1/4 x 8 1/4 x 8 3/4
Focal capacity . . . . .	7 in.	8 1/2 in.	12 in.
Weight . . . . .	3 lbs. 10 ozs.	5 lbs.	8 lbs.
Size of lens board . . . .	2 7/8 x 2 7/8 in.	3 1/4 x 3 1/4 in.	4 x 4 in.
Minimum focus of lens accommodated . . . . .	5 in.	6 in.	7 1/2 in.

## THE PRICE

Auto Graflex without lens, including	3 1/4 x 4 1/4	4 x 5	5 x 7
one double holder . . . . .	\$ 64.00	\$ 74.66	\$ 96.00
	No. 31	No. 32	No. 34
With Kodak Anastigmat Lens, f.4.5 . . . . .	101.33	117.86	162.13
With B. & L. Kodak Anastigmat	No. 2	No. 3	No. 5
Lens, f.6.3 . . . . .	89.06	100.80	140.26
	No. 14	No. 15	No. 16
With B. & L. Tessar, Series Ic, f.4.5 . . . . .	107.73	125.87	173.86
Graflex Roll Holder . . . . .	10.00	11.00	12.00
Graflex Magazine Plate Holder . . . . .	14.00	15.00	17.00
Film Pack Adapter, leather covered . . . . .	5.50	6.00	8.00
Leather case for camera and holder . . . . .	8.50	10.00	14.50
Leather case for camera and magazine . . . . .	9.50	11.00	15.50
Leather case to hold six plate holders . . . . .	5.50	6.00	7.00
Extra Graflex plate holders, each . . . . .	2.75	2.75	3.75
Ground glass panel . . . . .	2.25	2.75	3.75

*The prices of camera and lens equipments include  
the Excise War Tax.*

# THE AUTO GRAFLEX

Folmer's Patent, February 5, 1907

A REFLECTING camera that has won a superior position among both professional and amateur photographers on account of its simplicity of design and operation and adaptability to a very wide range of work.

The Auto Graflex is offered in three sizes:  $3\frac{1}{4} \times 4\frac{1}{4}$ ,  $4 \times 5$  and  $5 \times 7$ , each of the models embodying the exclusive Graflex features.

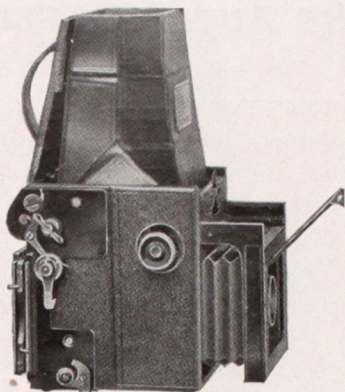
The reflecting mirror and Graflex Focal Plane Shutter are a part of this instrument, the shutter permitting speeds from time to  $\frac{1}{1000}$  of a second. The new design focusing hood renders focusing particularly easy, and is readily detachable.

The Auto Graflex may be fitted with any of the well known Anastigmats, although our experience has proved that the most satisfactory results will be obtained with the lenses listed with each model.

The Auto Graflex takes the regular Graflex plate holder, and is constructed to take the Graflex Roll Holder, the Graflex Magazine Plate Holder, which may be loaded with twelve glass plates, and the Film Pack Adapter, which takes the Premo Film Pack.

The  $5 \times 7$  Auto Graflex differs slightly in construction from the  $3\frac{1}{4} \times 4\frac{1}{4}$  and  $4 \times 5$  sizes. On the  $5 \times 7$  camera, the front, as well as the lens cover, is hinged, affording easy access to the lens, and the construction of the camera body is slightly different from that of the smaller models.





## THE AUTO GRAFLEX JUNIOR

### SPECIFICATIONS

Dimensions closed . . . . .	5 x 4 $\frac{3}{8}$ x 5
Focal capacity . . . . .	5 $\frac{1}{2}$ in.
Weight . . . . .	39 ozs.
Minimum focus of lens accommodated	4 in.

### THE PRICE

Auto Graflex Junior without lens, including one double plate holder . . . . .	2 $\frac{1}{4}$ x 3 $\frac{1}{4}$ \$44.80
With Kodak Anastigmat Lens, f.4.5, No. 30	77.87
With B. & L. Kodak Anastigmat Lens, f.6.3, No. 1 . . . . .	68.27
With B. & L. Tessar, Series Ic, f.4.5, No. 13	83.73
Graflex Roll Holder . . . . .	9.50
Graflex Magazine Plate Holder . . . . .	12.00
Graflex Film Pack Adapter . . . . .	5.00
Ground glass panel . . . . .	2.00
Leather case for camera and roll holder . .	7.00
Leather case for six plate holders . . . .	5.00
Leather case for camera and magazine . .	8.50
Extra Graflex plate holders, each . . . .	1.75

*The prices of camera and lens equipments include  
the Excise War Tax.*

## THE AUTO GRAFLEX JUNIOR

THIS model effectively meets the demand for a small camera of the reflecting type. The short focal length of the speedy Anastigmat Lenses, recommended for use with this camera, and the available range in shutter speeds—from time exposures to  $\frac{1}{10000}$  of a second—insure a wide latitude of photographic work, and great depth of definition even with large stops.

The  $2\frac{1}{4} \times 3\frac{1}{4}$  negatives, produced by this camera, show remarkable definition, and enlargements several times the original size may readily be made.

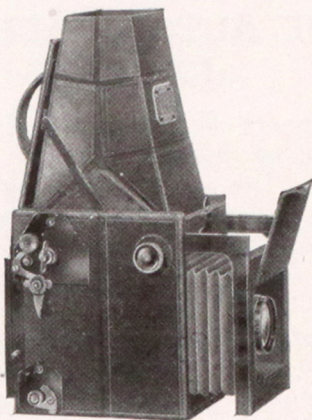
A safety device prevents the winding of the shutter curtain until the reflecting mirror is locked in focusing position, thus preventing the possibility of fogging the plate or film. The focusing hood is automatic in its action, and is finished with a square top, making it exceptionally easy to secure vertical pictures with the camera held on its side.

Like all models of this type, absolute parallelism of the front and focal plane is maintained, as the focusing racks and front standard are stamped from one piece of heavy brass.

The depressed metal front of the Auto Graflex Junior is threaded to accept the lenses listed.

Graflex attachments for the use of Plates, Film Packs or Graflex Roll Film interchangeably fit the back of the camera.





## THE REVOLVING BACK GRAFLEX JUNIOR

### SPECIFICATIONS

Dimensions when closed . . . . .	6 x 4½ x 6¼
Focal capacity . . . . .	7¼ in.
Weight . . . . .	3¼ lbs.
Minimum focus of lens accommodated . . . . .	5¼ in.

### THE PRICE

Revolving Back Graflex Junior without lens, 2¼ x 3¼ including one double plate holder . . . . .	\$ 74.67
With Kodak Anastigmat Lens, f.4.5, No. 32 . . . . .	117.87
With B. & L. Kodak Anastigmat Lens, f.6.3, No. 3 . . . . .	100.80
With B. & L. Tessar Lens, Series Ic, f.4.5, No. 15 . . . . .	125.87
Graflex Roll Holder . . . . .	9.50
Graflex Magazine Plate Holder . . . . .	12.00
Graflex Film Pack Adapter . . . . .	5.00
Ground glass panel, to interchange with plate holders . . . . .	2.00
Leather case for camera and roll holder . . . . .	7.50
Leather case for six plate holders . . . . .	5.00
Leather case for camera and magazine . . . . .	9.00
Extra Graflex plate holders, each . . . . .	1.75

*The prices of camera and lens equipments include  
the Excise War Tax.*

## THE REVOLVING BACK GRAFLEX JUNIOR

**S**IMILAR in design to the Auto Graflex Junior, this model is equipped with a revolving back, which permits making vertical negatives without turning the camera on its side. The revolving back may be changed from horizontal to vertical, or any intermediate position, without danger of fogging the plate or film when the slide is withdrawn. Because of this convenient feature it is necessary to make the reflecting mirror a trifle longer than that supplied with the Auto Graflex Junior. This slightly increases the length of the body of the camera, requiring the use of a lens of a slightly greater focal length.

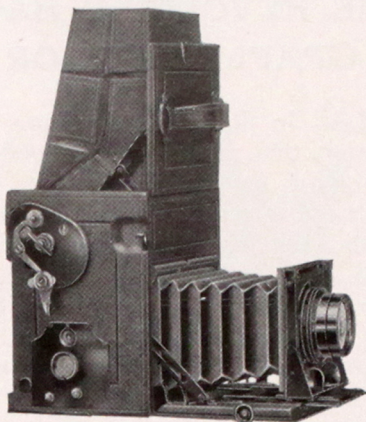
The shutter is the same as that supplied with other Graflex Cameras, having five fixed apertures permitting exposures of any duration from time to  $\frac{1}{1000}$  of a second. A safety device prevents the winding of the shutter curtain until the mirror is depressed.

The front is of the same rigid construction as that on the Auto Graflex Junior, and the detachable focusing hood gives easy access to the focusing screen.

The Revolving Back Graflex Junior is supplied with a depressed, cupped metal front threaded to accept the lenses listed.

Graflex Roll Film, Premo Film Packs or Plates may be used with the Graflex Attachments, interchangeably fitting the back of this camera.





# THE COMPACT GRAFLEX

## SPECIFICATIONS

	$3\frac{1}{4} \times 5\frac{1}{2}$	5 x 7
Dimensions when closed . . . . .	$7 \times 4\frac{7}{8} \times 7$	$9\frac{1}{2} \times 7 \times 9\frac{1}{2}$
Focal capacity . . . . .	10 in.	$12\frac{1}{2}$ in.
Weight . . . . .	5½ lbs.	8½ lbs.
Size of lens board . . . . .	$3\frac{1}{4} \times 3\frac{1}{4}$ in.	4 x 4 in.
Minimum focus of lens accommodated	$6\frac{1}{2}$ in.	$8\frac{1}{2}$ in.

## THE PRICE

Compact Graflex without lens, including one	$3\frac{1}{4} \times 5\frac{1}{2}$	5 x 7
double plate holder . . . . .	\$ 85.33	\$112.00
	No. 33	No. 34
With Kodak Anastigmat Lens, <i>f</i> .4.5 . . . . .	138.67	178.13
	No. 4	No. 5
With B. & L. Kodak Anastigmat Lens, <i>f</i> .6.3 . . . . .	117.33	156.26
	No. 15a	No. 16
With B. & L. Tessar, Series Ic, <i>f</i> .4.5 . . . . .	147.73	189.87
Graflex Roll Holder . . . . .	11.00	12.00
Graflex Magazine Plate Holder . . . . .	15.50	17.00
Graflex Film Pack Adapter, leather covered . . . . .	6.00	8.00
Ground glass panels . . . . .	2.75	3.75
Leather case for camera and roll holder . . . . .	9.50	13.50
Leather case for camera and magazine . . . . .	10.50	14.50
Extra case for six plate holders . . . . .	6.00	7.00
Extra Graflex plate holders . . . . .	2.75	3.75

*The prices of camera and lens equipments include the Excise War Tax.*

## THE COMPACT GRAFLEX

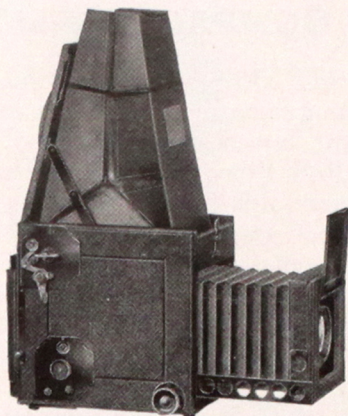
**C**OMPACTNESS of construction in a reflecting camera, affording the advantage of the interchangeable use of Plates, Graflex Roll Film or Premo Film Packs, characterizes this model.

Particular attention is directed to the automatic safety curtain which is actuated by the swinging mirror frame protecting the Plate or Film when the mirror is set in focusing position. As soon as the release lever is pressed, the swinging mirror causes the safety curtain to drop, and allows the Focal Plane Shutter to make the exposure in the usual way. The mirror frame in this camera is constructed of aluminum, which reduces the weight of the instrument, and as the mirror frame seats against an air cushion in the top of the camera, all vibration is eliminated—a valuable feature when making slow exposures while holding the camera in the hand.

The focusing hood is made amply large to afford full view of the focusing screen when making exposures with the camera held in position for making either horizontal or vertical negatives.

The Compact Graflex is fitted with the regular Graflex Focal Plane Shutter, permitting automatic exposures ranging from  $\frac{1}{10}$  to  $\frac{1}{10000}$  of a second and time exposures of any duration can be readily made. The camera takes the Graflex Plate Holder, Graflex Film Pack Adapter, Graflex Magazine Plate Holder or the improved Graflex Roll Film Holder.





## TELESCOPIC REVOLVING BACK GRAFLEX

### SPECIFICATIONS

	$3\frac{1}{4} \times 4\frac{1}{4}$	$4 \times 5$
Dimensions when closed . . . . .	$6\frac{3}{4} \times 5\frac{1}{2} \times 6\frac{7}{8}$	$8\frac{3}{8} \times 6\frac{3}{8} \times 7\frac{7}{8}$
Focal capacity . . . . .	$8\frac{1}{2}$ in.	12 in.
Weight . . . . .	$4\frac{1}{2}$ lbs.	$6\frac{3}{4}$ lbs.
Size of lens board . . . . .	$3\frac{1}{4} \times 3\frac{1}{4}$ in.	$3\frac{3}{4} \times 3\frac{3}{4}$ in.
Minimum focus of lens accommo- dated . . . . .	$5\frac{3}{4}$ in.	$7\frac{1}{8}$ in.

### THE PRICE

Telescopic R. B. Graflex without lens, including $3\frac{1}{4} \times 4\frac{1}{4}$ $4 \times 5$ one double plate holder and focusing panel . . . . .	\$101.33	\$112.00
	No. 32	No. 33
With Kodak Anastigmat Lens, <i>f</i> .4.5 . . . . .	144.53	165.33
	No. 3	No. 5
With B. & L. Kodak Anastigmat Lens, <i>f</i> .6.3 . . . . .	127.47	156.27
	No. 15	No. 16
With B. & L. Tessar, Series Ic, <i>f</i> .4.5 . . . . .	152.53	189.86
Graflex Roll Holder . . . . .	10.00	11.00
Graflex Magazine Plate Holder . . . . .	14.00	15.00
Film Pack Adapter, leather covered . . . . .	5.50	6.00
Leather case for camera and roll holder . . . . .	9.75	12.00
Leather case for camera and magazine . . . . .	10.50	13.00
Leather case for six plate holders . . . . .	5.50	6.00
Extra Graflex plate holders, each . . . . .	2.75	2.75

*The prices of camera and lens equipments include  
the Excise War Tax.*

## TELESCOPIC REVOLVING BACK GRAFLEX

THIS camera can be brought into action quickly and easily. Pressure on a release, located near the handle, opens the camera and brings the hood into position for focusing, while the lens cover opens automatically the instant the front is racked out. An exceptionally large front board permits the use of the most rapid Anastigmat Lenses, and sufficient bellows capacity is provided for lenses of long enough focus to give excellent pictorial effect.

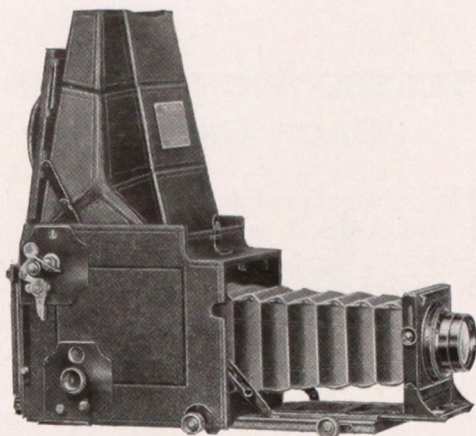
The Revolving Back permits making vertical or horizontal pictures without turning the camera on its side.

The regular Graflex Focal Plane Shutter and Reflecting Mirror are a part of this camera. The shutter is actuated to give automatic exposures from  $\frac{1}{10}$  to  $\frac{1}{1000}$  of a second, as well as time exposures of any duration.

The large, roomy focusing hood is attached in such a manner that it may be readily detached from the camera, permitting easy access to the focusing screen for cleaning or replacing.

The regular Graflex attachments for the use of Plates, Film Packs or Graflex Roll Film, interchangeably fit the back of the camera.





## REVOLVING BACK AUTO GRAFLEX

Folmer's Patent, February 5, 1907, and June 8, 1908

### SPECIFICATIONS

	$3\frac{1}{4} \times 4\frac{1}{4}$	4 x 5
Dimensions when closed . . . . .	$8\frac{1}{2} \times 5\frac{1}{2} \times 7$	$10 \times 6\frac{1}{4} \times 8$
Focal capacity . . . . .	15 $\frac{1}{2}$ in.	18 $\frac{1}{2}$ in.
Weight . . . . .	5 $\frac{3}{4}$ lbs.	7 $\frac{1}{2}$ lbs.
Size of lens board . . . . .	$3\frac{1}{4} \times 3\frac{3}{4}$ in.	$3\frac{3}{4} \times 3\frac{3}{4}$ in.
Minimum focus of lens accommodated .	7 $\frac{1}{8}$ in.	8 $\frac{3}{8}$ in.

### THE PRICE

Revolving Back Auto Graflex without lens, including one double plate holder and focusing panel	$3\frac{1}{4} \times 4\frac{1}{4}$ \$112.00	4 x 5 \$128.00
	No. 33	No. 34
With Kodak Anastigmat Lens, f.4.5 . . . . .	165.33	194.13
	No. 5	No. 6
With B. & L. Kodak Anastigmat Lens, f.6.3 . . . . .	156.26	187.73
	No. 10	
With B. & L. Protar Lens, Series VIIa, f.6.3 . . . . .	199.46	—
	No. 15a	No. 17
With B. & L. Tessar Lens, Series Ic, f.4.5 . . . . .	174.40	252.80
Graflex Roll Holder . . . . .	10.00	11.00
Graflex Magazine Plate Holder . . . . .	14.00	15.00
Film Pack Adapter, leather covered . . . . .	5.50	6.00
Leather case for camera and roll holder . . . . .	11.00	13.50
Leather case for camera and magazine . . . . .	12.00	14.50
Leather case for six plate holders . . . . .	5.50	6.00

*The prices of camera and lens equipments include  
the Excise War Tax.*

## REVOLVING BACK AUTO GRAFLEX

THE great bellows capacity provided with this camera permits the close approach required when making full sized reproductions, and also accommodates long focus lenses, or the single combinations of convertible lenses. The front bed is fitted with a telescopic rack of exceptional rigidity which can be drawn out beyond the edge of the platform, permitting full extension of the bellows.

The Revolving Back Auto Graflex is fitted with a specially designed rising and falling front which allows full movement of the front regardless of the position of the bellows.

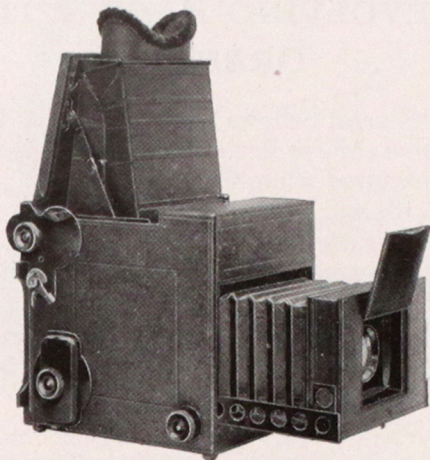
In many lines of photographic work it is frequently necessary to make vertical negatives without turning the camera on its side, and for those desiring a camera of this type the Revolving Back Auto Graflex is particularly valuable.

The hood is of ample size to permit accurate focusing for either horizontal or vertical pictures and is detachable, to provide easy access to the focusing screen for cleaning or repair.

The regular Graflex Focal Plane Shutter, actuated to give exposures from time to  $\frac{1}{1000}$  of a second, is part of this camera.

Graflex attachments for the use of Plates, Film Packs or Graflex Roll Film, interchangeably fit the back of the camera.





## THE PRESS GRAFLEX

Folmer's Patent, February 5, 1907, and June 8, 1909

### SPECIFICATIONS

Dimensions . . . . .	11 x 8 $\frac{1}{4}$ x 9 $\frac{3}{4}$
Focal capacity . . . . .	14 in.
Weight . . . . .	11 $\frac{1}{2}$ lbs.
Size of lens board . . . . .	4 x 4 in.
Minimum focus of lens accommodated	8 in.

### THE PRICE

Press Graflex without lens, including one	5 x 7
double plate holder . . . . .	\$133.33
With Kodak Anastigmat Lens, f.4.5, No. 34	199.47
With B. & L. Kodak Anastigmat Lens, f.6.3,	
No. 5 . . . . .	177.60
With B. & L. Tessar Lens, Series Ic, f.4.5,	
No. 16 . . . . .	211.20
Graflex Roll Holder . . . . .	12.00
Graflex Magazine Plate Holder . . . . .	17.00
Film Pack Adapter, leather covered . . . . .	8.00
Leather case for camera and roll holder . . . . .	18.00
Leather case for camera and magazine . . . . .	19.00
Leather case for six plate holders . . . . .	7.00
Extra Graflex Holders, each . . . . .	3.75

*The prices of camera and lens equipments include the Excise War Tax.*

## THE PRESS GRAFLEX

**D**ESIGNED to meet the exacting requirements of the Press and Commercial Photographer, the Press Graflex has proven especially satisfactory.

The Press Graflex is constructed to withstand very strenuous usage without injury to the mechanism, or throwing adjustments out of alignment. The shutter can be quickly set to give exposures as brief as  $\frac{1}{1500}$  of a second, as well as time exposures of any duration.

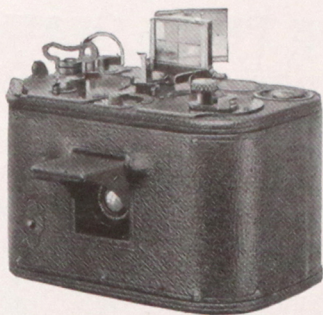
The camera is instantly accessible for focusing when being carried, as the top is opened by pressing a lever conveniently located near the handle; this automatically brings the focusing hood into position and the lens cover opens the instant the front is racked out, permitting the negative to be made with the least possible loss of time. This is a feature of great value to the newspaper photographer who frequently must quickly prepare for making a negative.

The telescopic side arms are of sufficient length to give a bellows extension of fourteen inches, while the special construction of this camera will permit the use of lenses having a focal length as short as eight inches.

A detachable, spring actuated ground glass panel holds the plate holder in place; this panel may be detached when using the Magazine Plate Holder or Graflex Roll Holder, or may be used for focusing when the camera is on a tripod in an elevated position.

The Press Graflex is made in the 5 x 7 size only.





## THE NO. 0 GRAPHIC CAMERA

Folmer's Patent, February 5, 1907, and April 21, 1908

### SPECIFICATIONS

Dimensions, 5 x 3½ x 3¼ in.; weight, 25 oz.

### THE PRICE

	1⅝ x 2½
No. 0 Graphic Camera . . . . .	\$48.00
Sole leather carrying case . . . . .	5.00

*The price of camera and lens includes the Excise War Tax.*

**T**HE No. 0 Graphic is a high grade fixed or universal focus film camera, fitted with a high speed Anastigmat Lens and Graflex Focal Plane Shutter,

The extreme simplicity of operation and the fact that it is unnecessary to focus makes it possible for the merest novice in photography to secure perfect results. With the lens working at its full aperture of *f*.6.3, everything up to within twelve feet of the camera is in focus, and by using a smaller diaphragm objects even nearer the camera will be in focus.

## THE No. 0 GRAPHIC—Continued

The Graflex Focal Plane Shutter with which the No. 0 Graphic is equipped has three apertures for instantaneous exposures— $\frac{1}{4}$ ,  $\frac{3}{4}$  and  $1\frac{1}{2}$  inches, giving a range of instantaneous exposures from  $\frac{1}{10}$  to  $\frac{1}{500}$  of a second, and one full opening for time exposures of any duration. An automatic sky-shade protects the lens from strong overhead light and serves the purpose of an automatic lens cap, while the curtain is being reset.

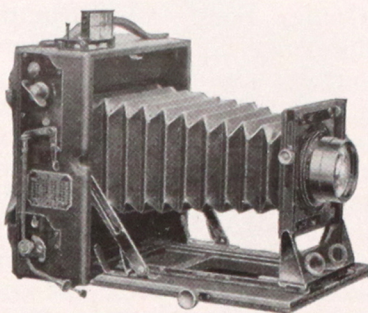
Every part of the No. 0 Graphic is adjusted with micrometer precision. The lens is of the best possible type for the work for which it is intended.

A specially constructed folding sight finder is provided, recording approximately the field covered by the lens when the camera is held on a level with the eyes at a normal reading distance. Fitted to this finder is a small metal bound mirror which, when swung into position, converts the instrument into a deceptive angle camera, permitting the making of photographs at right angles to the line of vision.

The No. 0 Graphic takes the regular No. 0 F.P. Kodak Film for pictures  $1\frac{5}{8} \times 2\frac{1}{2}$  inches.

The negatives made with this camera show such microscopic definition and extreme depth, that enlargements many times larger than the negative, retaining all the brilliancy of contact prints, may be made. A very simple means for making  $8 \times 10$  or smaller enlargements from No. 0 Graphic negatives has been provided in the Graflex Enlarging Camera.





## THE SPEED GRAPHIC

### SPECIFICATIONS

	$3\frac{1}{4} \times 4\frac{1}{4}$	4 x 5	$3\frac{1}{4} \times 5\frac{1}{2}$	5 x 7
Dimensions . . .	$5\frac{3}{4} \times 2\frac{3}{4} \times 6\frac{1}{4}$	$6\frac{1}{2} \times 4 \times 6\frac{3}{8}$	$7 \times 3\frac{1}{8} \times 7\frac{1}{2}$	$8\frac{3}{4} \times 3\frac{3}{4} \times 9\frac{3}{8}$
Focal capacity . .	10 in.	12 in.	12 in.	16 in.
Weight . . . . .	2½ lbs.	3½ lbs.	3¾ lbs.	5½ lbs.
Size of lens board .	$2\frac{1}{2} \times 2\frac{1}{2}$ in.	$3\frac{1}{4} \times 3\frac{1}{4}$ in.	$3\frac{1}{4} \times 3\frac{1}{4}$ in.	$3\frac{3}{4} \times 3\frac{3}{4}$ in.

### THE PRICE

Speed Graphic without lens, in-	$3\frac{1}{4} \times 4\frac{1}{4}$	4 x 5	$3\frac{1}{4} \times 5\frac{1}{2}$	5 x 7
cluding one plate holder . . .	\$ 58.67	\$ 61.87	\$ 64.00	\$ 74.67
	No. 31	No. 32	No. 33	No. 34
With Kodak Anastigmat Lens, f.4.5	96.00	105.07	117.33	140.80
With B. & L. Kodak Anastigmat	No. 2	No. 3	No. 4	No. 5
Lens, f.6.3 . . . . .	83.73	88.00	96.00	118.93
With B. & L. Tessar Lens, Series	No. 14	No. 15	No. 15a	No. 16
Ic, f.4.5 . . . . .	102.40	113.07	126.40	152.53
*Sole leather carrying case . . .	8.50	9.00	9.00	11.50
Extra lens board . . . . .	.45	.60	.60	.70
Extra plate holder . . . . .	1.75	1.75	1.75	2.00

*The prices of camera and lens equipments include  
the Excise War Tax.*

\*Carrying cases for Speed Graphic Cameras hold the camera and plate holders as follows:  $3\frac{1}{4} \times 4\frac{1}{4}$ , 5 holders; 4 x 5, 6 holders;  $3\frac{1}{4} \times 5\frac{1}{2}$ , 5 holders; 5 x 7, 6 holders.

## THE SPEED GRAPHIC

**F**OCAL Plane Shutter efficiency in a compact folding hand camera is the idea represented by this popular line of hand cameras.

The front is large enough to take the high speed Anastigmat lenses, and sufficiently firm to prevent vibration even when the camera is used with the bellows extended to its full capacity. The camera is provided with a rising front, which permits adjustment to eliminate an objectionable foreground.

The 4 x 5, 3¼ x 5½ and 5 x 7 Speed Graphic Cameras are equipped with the regular Graflex Focal Plane Shutter, actuated to give automatic exposures of any duration from  $\frac{1}{10}$  to  $\frac{1}{1000}$  of a second, and it is also possible to give time exposures of any duration. The shutter on the 3¼ x 4¼ Speed Graphic differs from that on the larger sizes, in that the exposure speeds run from "time" to  $\frac{1}{500}$  of a second, which is amply rapid for a camera using a short focus lens.

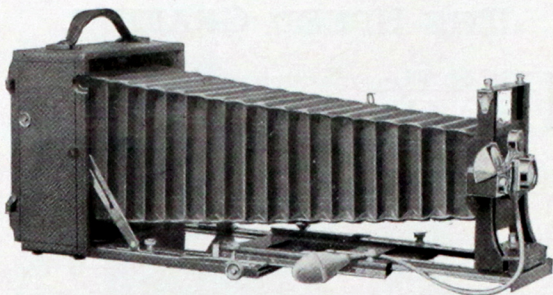
The spring actuated ground glass focusing panel will accept the Graphic Plate Holder or the Premo Film Pack Adapter.

For those wishing to use Roll Film, the back of the Speed Graphic Camera can be altered to interchangeably accept any of the Graflex attachments for the use of Graflex Roll Film, Premo Film Packs or Plates.

Prices for altering the camera back to accept Graflex attachments are as follows:

3¼ x 4¼	4 x 5	3¼ x 5½	5 x 7
\$11.00	\$11.00	\$11.00	\$12.00





## REVOLVING BACK CYCLE GRAPHIC

### SPECIFICATIONS

	4 x 5	5 x 7	6½ x 8½	8 x 10
Dimensions . . .	6⅞ x 4 x 7⅞	8¾ x 4¼ x 9¼	10⅜ x 4½ x 10⅜	12 x 5 x 12
Focal capacity . .	17 in.	22½ in.	26 in.	30 in.
Weight . . . . .	3¾ lbs.	6¼ lbs.	7½ lbs.	10½ lbs.
Size of lens board	2½ x 2½ in.	3½ x 3½ in.	4¼ x 4¼ in.	4¾ x 4¾ in.

### THE PRICE

Including double plate holder and sole leather carrying case

	4 x 5	5 x 7	6½ x 8½	8 x 10*
Revolving Back Cycle Graphic with Graphic Rapid Rectilinear Lens and Automatic Shutter . . . . .	\$ 71.78	\$ 89.77	\$110.88	\$142.50
With B. & L. Kodak Anastigmat Lens, f.6.3 and Volute Shutter . . . . .	113.17	150.35	180.95	—
With B. & L. Protar Lens, Series VIIa, and Volute Shutter . . . . .	158.50	193.55	—	—
Extra Plate Holders, each . . . . .	1.75	2.00	2.50	2.75
Graflex Focal Plane Shutter, leather covered to match, extra . . . . .	25.00	27.00	30.00	32.00
Supplementary bed for Wide Angle Lenses . . . . .	9.00	10.00	11.00	12.00
Extra Lens Boards, each . . . . .	.45	.50	.60	.60

*The prices of camera and lens equipments include  
the Excise War Tax.*

\*Furnished with reversible back only.

To insure proper fitting we recommend that cameras be purchased complete with lenses as listed. We will not hold ourselves responsible for results with any of our cameras when lenses are not fitted by us.

## REVOLVING BACK CYCLE GRAPHIC

THE rigid construction and accurate adjustments recommend the Revolving Back Cycle Graphic to those engaged in technical work involving the application of photography.

To allow the use of long focus lenses, ample bellows capacity is provided. The front runs out on telescopic framed tracks, reinforced by angle brass guides with milled head binding screws, which lock the bed rigidly in place. The construction of these tracks affords a wider base for the lens support and prevents any lateral or oscillating movement.

The swing back is secured by an adjustment of the side arms running in a slotted plate on the platform and locked by means of milled head binding screws.

The revolving back involves the same principle as that employed in the Revolving Back Graflex.

The new rising and falling front mechanism, by means of which the front may be raised or lowered to any desired position, is at the same time a lock in itself. The Graflex Focal Plane Shutter and Anastigmat Lens equipment is quite indispensable, if it is desired to adapt the camera to high speed photography.

The regular Premo Film Pack Adapter is interchangeable with the Graphic Plate Holder in the 4 x 5 and 5 x 7 sizes.



# GRAFLEX ROLL HOLDER

THE Graflex Roll Holder, 1915 model, takes the new Eastman Graflex Film, and is interchangeable with the Plate Holders on Graflex Cameras.

The Roll Holder is easily loaded in daylight and is fitted with a dark slide, which permits the removal of the Holder from the camera before the entire roll has been used without exposing the film.

## GRAFLEX ROLL HOLDERS

### 1915 MODEL

2 $\frac{1}{4}$ x 3 $\frac{1}{4}$	For Graflex Roll Holder Film No. 50 . . . . .	\$ 9.50
3 $\frac{1}{4}$ x 4 $\frac{1}{4}$	For Graflex Roll Holder Film No. 51 . . . . .	10.00
3 $\frac{1}{4}$ x 5 $\frac{1}{2}$	For Graflex Roll Holder Film No. 52 . . . . .	11.00
4 x 5	For Graflex Roll Holder Film No. 53 . . . . .	11.00
5 x 7	For Graflex Roll Holder Film No. 54 . . . . .	12.00

Graflex Roll Holders will fit Graflex Cameras only.

## EASTMAN GRAFLEX FILM

No. 50 . . . . .	3 $\frac{1}{4}$ x 2 $\frac{1}{4}$ . . . . .	6 Exposures . . . . .	\$ .21
No. 51 . . . . .	4 $\frac{1}{4}$ x 3 $\frac{1}{4}$ . . . . .	6 Exposures . . . . .	.36
No. 52 . . . . .	5 $\frac{1}{2}$ x 3 $\frac{1}{4}$ . . . . .	6 Exposures . . . . .	.41
No. 53 . . . . .	5 x 4 . . . . .	6 Exposures . . . . .	.47
No. 54 . . . . .	7 x 5 . . . . .	6 Exposures . . . . .	.83

To avoid error order Film by number.

*The prices of Graflex Film include the Excise War Tax.*

# GRAFLEX FILM PACK ADAPTER

THE Graflex Film Pack Adapter takes the Premo Film Pack. This combination provides a very rapid means for loading, unloading and changing the exposed film.

### THE PRICE

Graflex Film Pack Adapter, Model A . . . . .	2 $\frac{1}{4}$ x 3 $\frac{1}{4}$	3 $\frac{1}{4}$ x 4 $\frac{1}{4}$	4 x 5	3 $\frac{1}{4}$ x 5 $\frac{1}{2}$	5 x 7
	\$5.00	\$5.50	\$6.00	\$6.00	\$8.00

# THE GRAFLEX MAGAZINE PLATE HOLDER

THE Graflex Magazine Plate Holder is designed to carry twelve glass plates or cut films, in separate metal septums. When a plate is exposed the septum is drawn into a leather bag attached to the end of the magazine and re-inserted into the rear of the magazine holder.

Each septum is numbered on the back, the number appearing at a ruby window in the back of the magazine.

## SPECIFICATIONS

	$2\frac{1}{4} \times 3\frac{1}{4}$	$3\frac{1}{4} \times 4\frac{1}{4}$	$4 \times 5$	$3\frac{1}{4} \times 5\frac{1}{2}$	$5 \times 7$
Dimensions	$5 \times 3\frac{1}{8} \times 2\frac{1}{8}$	$6\frac{1}{4} \times 2\frac{1}{4} \times 4\frac{1}{4}$	$7\frac{1}{4} \times 2\frac{3}{8} \times 5$	$7\frac{3}{8} \times 2\frac{1}{4} \times 4\frac{1}{2}$	$9\frac{1}{4} \times 2\frac{5}{8} \times 6\frac{1}{4}$
Weight . .	14 oz.	$1\frac{1}{2}$ lbs.	2 lbs.	2 lbs.	$3\frac{1}{2}$ lbs.

## THE PRICE

$2\frac{1}{4} \times 3\frac{1}{4}$ , each . . . . .	\$12.00
$3\frac{1}{4} \times 4\frac{1}{4}$ , each . . . . .	14.00
$4 \times 5$ , each . . . . .	15.00
$3\frac{1}{4} \times 5\frac{1}{2}$ , each . . . . .	15.50
$5 \times 7$ , each . . . . .	17.00

# THE CROWN TRIPOD

Folmer's Patent, June 23, 1903

THE Crown is a four-section telescopic folding tripod, very rigid, quickly set up and readily adjusted for height. It is made of selected cherry, soaked in oil for ten days before being finished. The wood is then rubbed down and shellacked. This treatment renders it extremely tough and practically waterproof.

## THE PRICE

No. 1 Crown Tripod with 4-inch top . . . . .	\$ 8.00
No. 2 Crown Tripod with 6-inch top . . . . .	8.50
No. 3 Crown Tripod with 6-inch top . . . . .	10.00
No. 4 Crown Tripod with $6\frac{1}{2}$ -inch top . . . . .	10.50



## EASTMAN PLATE TANK

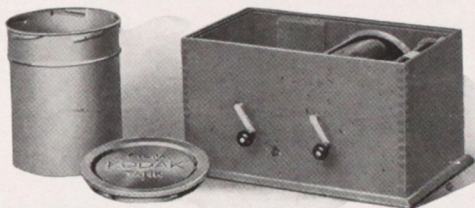


TO secure the best results plates should be developed in the Eastman Plate Tank. Development is based on the Time and Temperature method, whereby the exposed plates are immersed in a solution of certain strength, at a certain temperature, for a definite time.

### THE PRICE

Eastman Plate Tank, 4 x 5, for 4 x 5, 3 $\frac{1}{4}$ x 5 $\frac{1}{2}$ , 3 $\frac{1}{4}$ x 4 $\frac{1}{4}$ and 2 $\frac{1}{4}$ x 3 $\frac{1}{4}$ plates . . . . .	\$4.00
Eastman Plate Tank, 5 x 7 . . . . .	6.00

## KODAK FILM TANK



KODAK Film Tanks of standard sizes will accept the film spools for the Graflex Roll Holder, as well as those used by the 1A and 3A Graflex.

### THE PRICE

3 $\frac{1}{2}$ -inch Kodak Film Tank, for 3 $\frac{1}{4}$ x 5 $\frac{1}{2}$ 3A Film, 2 $\frac{1}{2}$ x 4 $\frac{1}{4}$ 1A Film and 3 $\frac{1}{4}$ x 2 $\frac{1}{4}$ Eastman Graflex Film No. 50 . . . . .	\$5.50
5-inch Kodak Film Tank, for 4 $\frac{1}{4}$ x 3 $\frac{1}{4}$ Eastman Graflex Film No. 51 . . . . .	6.50
7-inch Kodak Film Tank, for 5 $\frac{1}{2}$ x 3 $\frac{1}{4}$ Eastman Graflex Film No. 52, 5 x 4 Eastman Graflex Film No. 53 and 7 x 5 Eastman Graflex Film No. 54 . . . . .	8.00



## KODAK ANASTIGMAT

*f.4.5*

THE Kodak Anastigmat Lens, *f.4.5*, possesses all of the qualities essential to high speed photography with Graflex Cameras or the Graflex Focal Plane Shutter, and is also especially suitable for home portraiture, groups, landscapes and other varied pictorial subjects.

The excellent definition and uniform illumination throughout the area of the perfectly flat field, obtainable with the full aperture *f.4.5*, fully meets the requirements of the amateur and professional photographer, who must frequently work under unfavorable light conditions.

The lenses are compactly mounted and provided with Iris Diaphragm.

No.	Size of Plate covered with stop <i>f.4.5</i> Inches	Equivalent Focus Inches	PRICE Lens in barrel with Iris Diaphragm
30	2 $\frac{1}{4}$ x 3 $\frac{1}{4}$	4 $\frac{1}{2}$	\$31.00
31	3 $\frac{1}{4}$ x 4 $\frac{1}{4}$	5 $\frac{1}{2}$	35.00
32	4 x 5	6 $\frac{1}{2}$	40.50
33	3 $\frac{1}{4}$ x 5 $\frac{1}{2}$	7 $\frac{1}{2}$	50.00
34	5 x 7	8 $\frac{3}{4}$	62.00



THIS little booklet does not include the entire line of Graflex Cameras and accessories. Should more complete information be desired, the general Graflex Catalogue may be obtained from a local dealer in photographic supplies.

---

## TERMS

THE prices in this catalogue are strictly net, except to regular dealers who carry our goods in stock.

THESE PRICES, OWING TO UNSETTLED CONDITIONS, ARE, HOWEVER, SUBJECT TO CHANGE WITHOUT NOTICE.

For the convenience of our customers we recommend that they make their purchases from a dealer in photographic goods, as by so doing they can save both time and transportation charges.

FOLMER & SCHWING DEPARTMENT

EASTMAN KODAK COMPANY

ROCHESTER, N. Y.

**W. SCHILLER & CO.**  
**6 SOUTH BROADWAY**  
**ST. LOUIS, MO.**