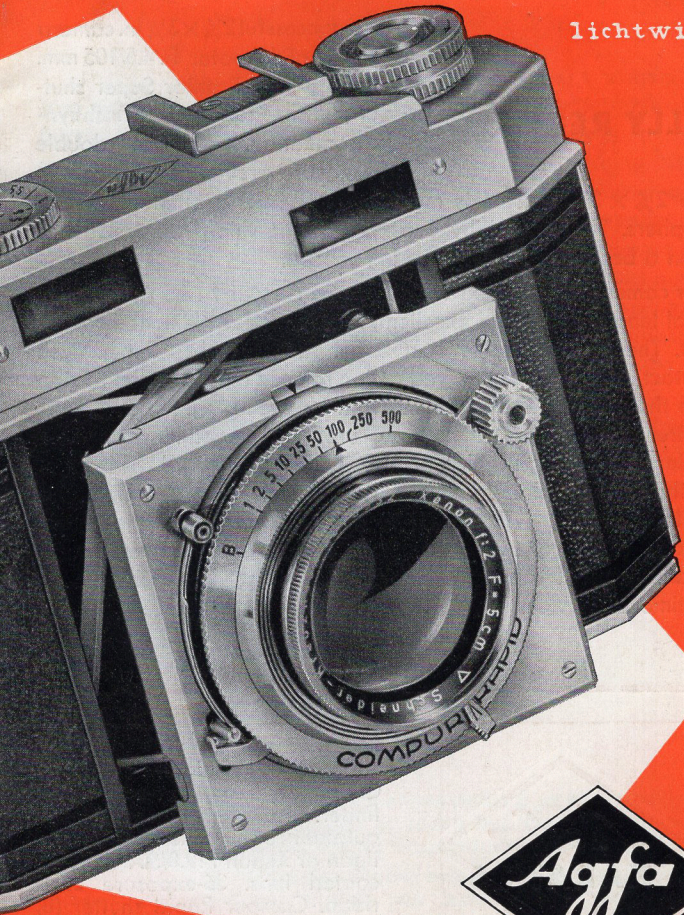


lichtwitz

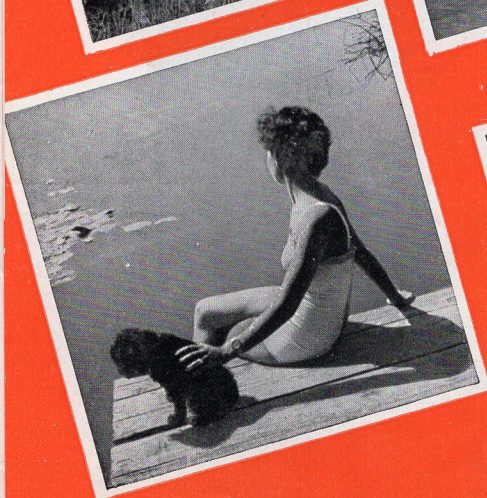
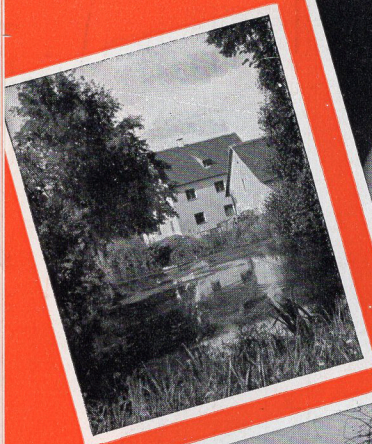


# AGFA CAMERAS

are now available in a complete line ranging from the low-priced Box to the most advanced design of the Karat 36. Whatever your choice may be, you will always obtain the maximum possible value, a dependable, long-life camera, guaranteed by



a name backed by traditional dependability





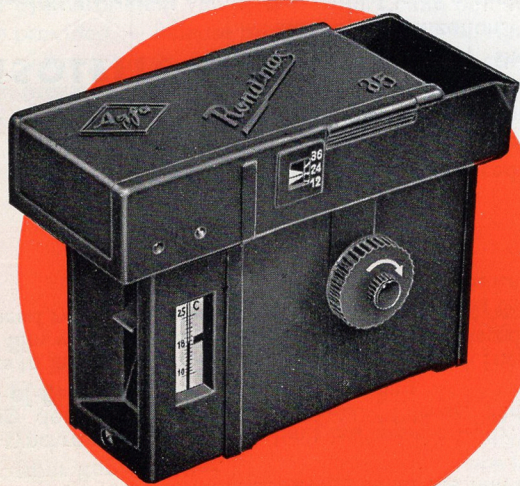
**Agfa**  
**BOX 50**  
Back again!

The Agfa Meniscus lens produces sharp pictures without focusing. All subjects at a distance of 8 ft. or more will be in sharp focus. Using the Agfa portrait lens, you may reduce the distance to as little as 3½ ft. — Built-in yellow filter. Two diaphragm settings. Reliable shutter for action shots and time exposure. Two bright-image brilliant viewfinders. Two tripod sockets. Film pressure plate. Cable release socket. Carrying strap. Camera is easily loaded. Hinged camera back cannot be lost. — The Agfa Box is characterized by efficiency and reliability. The smart ever-ready case gives adequate protection.

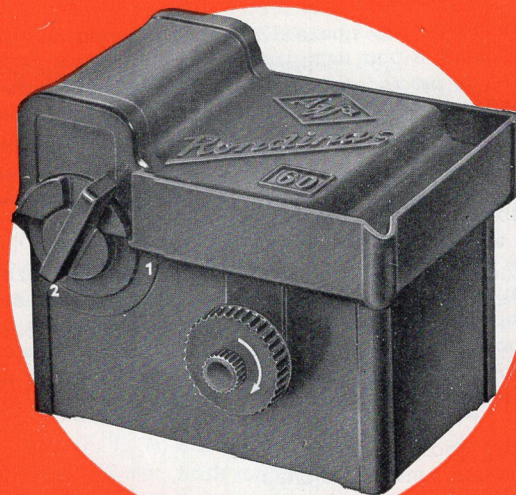
The reliable Agfa Box used by millions of amateurs. This robust all-metal camera is completely fool-proof. 8 large size snaps on 120 film (2¼ × 3¼ in.).

**Agfa**  
**RONDINAX 35**

No darkroom is needed. Films can be developed at any desired place. Just insert the film cartridge, attach the film to a clip, close the tank, and rotate a knob to wind the film on to the spiral drum. The emulsion remains untouched, flawless work being the result. A film cutting device combined with a film counter enables you to develop any desired portion of a film. A built-in thermometer indicates the bath temperature. Filling the tank requires only ⅓ pint of solution.



The ideal daylight-loading developing tank for all amateurs who wish to give their miniature films a personal touch by doing their own developing. Conveniently used, no splashing.



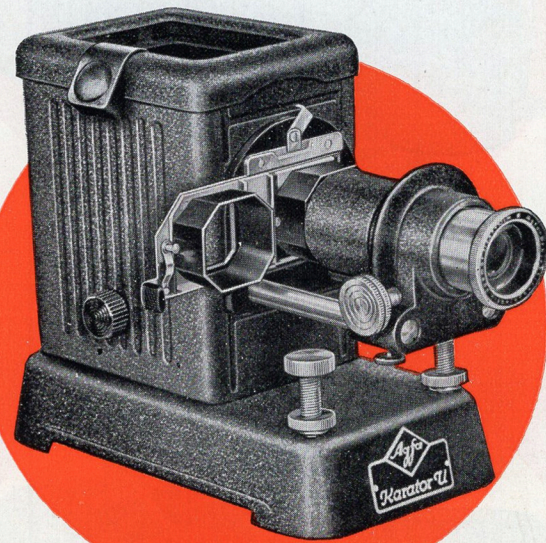
**Agfa**  
**RONDINAX 60**

After closing the tank, the backing paper is pulled out and severed from the film. The film, now protected from stray light, is attached to a winding band serving to wind it on to a spiral-grooved drum. No darkroom or other provisional equipment is needed. The film is fully protected from scratching and fogging. Developer consumption is extremely low, only ¼ pint of solution being required for filling. By using the Rondinax tank, the amateur can give his pictures a personal touch, because he has full control over the conditions under which the film is developed.

A daylight-loading developing tank for roll films 2½ in. wide, i. e. for 2¼ × 3¼, 2¼ × 2¼, and 1¾ × 2¼ in. pictures. The film spool is inserted in daylight.

**Agfa**  
**KARATOR U**

The new expertly engineered Agfa Karator "U" for the projection of slides 2 × 2 in. (for miniature pictures 24 × 36 mm) is equipped with an Agfa Agomar 2.8/10 cm. lens, or with an f:3.5/15 cm. lens. Light from a 250-watt lamp is fully utilized by a special condenser and reflector. Thus the projector can be successfully used in large-size rooms. Lenses and condensers are anti-reflex hard coated. Lamp centered from the outside. Reading light window. Heat protection glass. Vertical adjustment. Sturdy construction using stainless steel and light metal makes for long service.





**Agfa**  
**BILLY RECORD 4,5**

The  $2\frac{1}{4} \times 3\frac{1}{4}$  in. size is most popular among amateur photographers. The Agfa Billy camera offering this picture size has been a bestseller since it was introduced.

This camera is equipped with an Agfa Apotar f : 4.5 Anastigmat focal length  $4\frac{1}{8}$  in., an excellent, hardcoated, 3-element Anastigmat. The dependable Prontor Super shutter with a 3-mm. flash contact has a built-in delayed action release enabling you to step into the picture. — Convenient front lens focusing. An automatic shutter lock prevents double exposures. The hinged Newton viewfinder is used when taking pictures with the camera held in front of the eye. A brilliant viewfinder for horizontal and vertical use is also provided. — Release built into camera body. Hinged spool holder. Film pressure plate. Steel camera body covered with scratch-proof Robusit. The durable Billy Record will give you a lifetime of service.

The successful  $2\frac{1}{4} \times 3\frac{1}{4}$  in. camera with Agfa Apotar f : 4.5/105 mm. coated lens, Prontor Super shutter, selftimer and built-in flash synchronization. "Red Dot" double exposure prevention device.

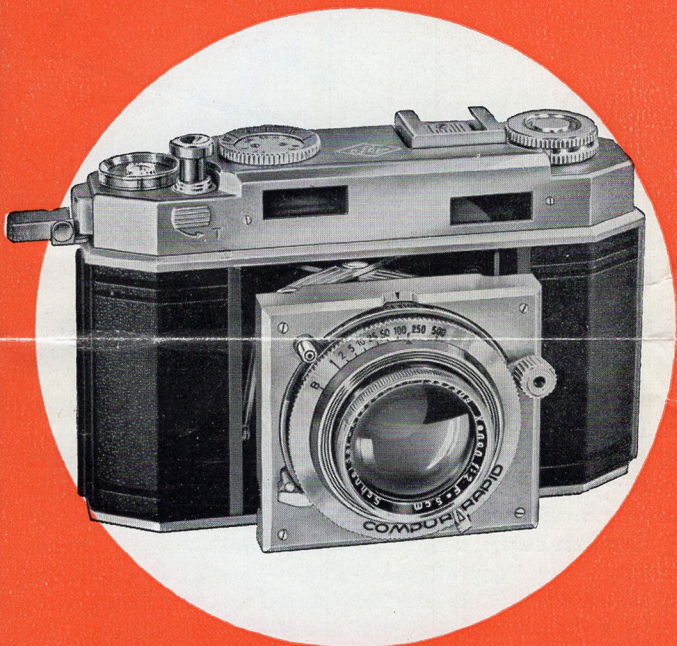
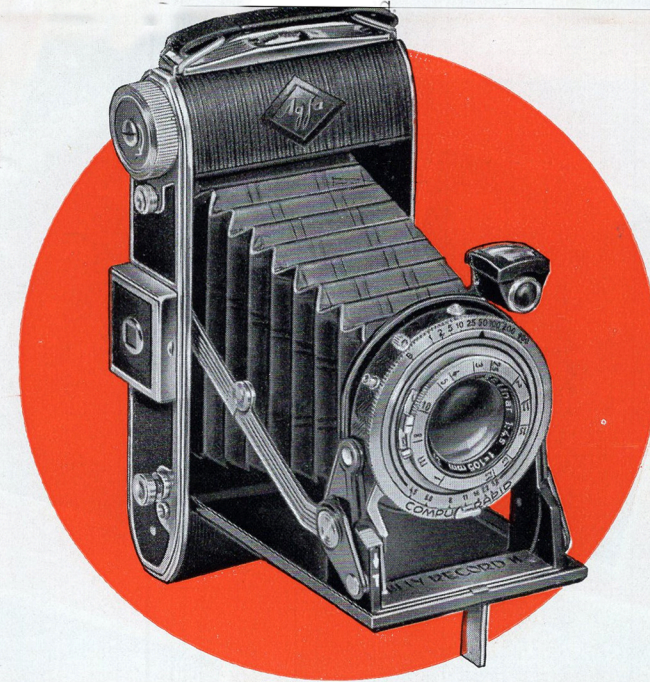
**Agfa**  
**BILLY RECORD II**

While producing more than a million Billy cameras, Agfa continuously improved its design. The Record II model is the most advanced of this series. Its sturdy construction, the reliable mechanism, and the high-grade lens combine into a camera that will meet the most exacting requirements.

The most typical feature of the new Billy Record II camera is the design of the spring braces which firmly support the lens board and give instant readiness for exposure. The Agfa Solinar f : 4.5 hard coated Anastigmat, focal length  $4\frac{1}{8}$  in., produces extremely sharp and brilliant pictures. The world-renowned Compur Rapid shutter (B, 1,  $\frac{1}{2}$ , etc. to  $\frac{1}{400}$  second) with delayed action (selftimer) has a 3-mm. flash contact.

Release built into camera body. Double-exposure lock. "T"-lever. Hinged Newton viewfinder and brilliant viewfinders. Front lens focusing. Hinged spool holder. Film pressure plate. Metal parts in satin-chrome finish. Scratch-proof Robusit covering.

The de luxe model of the  $2\frac{1}{4} \times 3\frac{1}{4}$  in. Billy camera. Agfa Solinar f : 4.5/105mm. coated lens Compur Rapid shutter with delayed action selftimer and built-in flash synchronization.



**Agfa**  
**KARAT 36**

Mastering the art of "dynamic photography" requires a special-type, precision-built camera equipped with a lens of the highest possible degree of perfection.

The famous Heligon or Xenon lenses used in the Agfa Karat 36 camera guarantee a maximum of sharpness and brilliancy in black-and-white as well as in colour pictures. The two outstanding features of its design are the coupling of the lens with the large range-viewfinder—a combination of viewfinder and rangefinder—and the extremely convenient dual function or the rapid-feeding lever which simultaneously advances the film and cocks the Compur Rapid shutter.

Flash synchronization. Release built into camera body. Lock preventing double exposure and blanks. "T"-lever. Film counter. Depth-of-field ring. Genuine leather covering.

Thanks to its easy manipulation, handy shape, quick focusing, and rapid film winding, the Karat 36 camera is considered the most advanced type of a rapid sequence spring-brace camera.

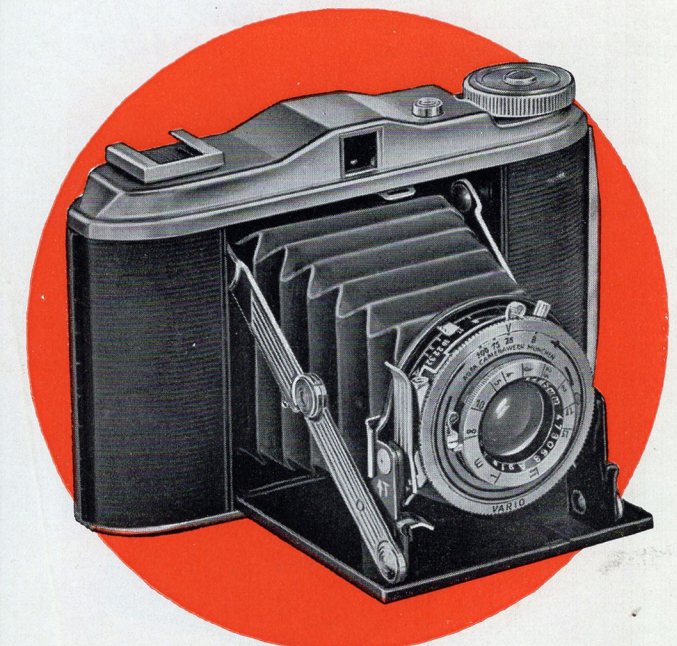
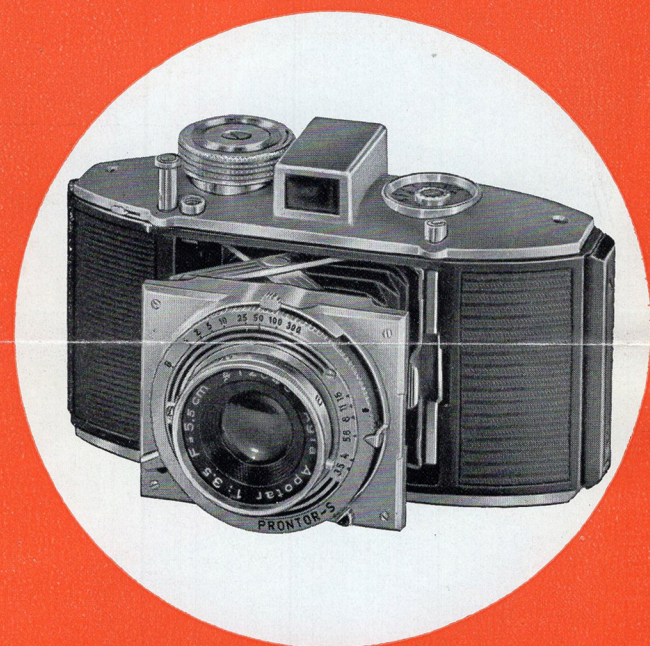
Fast action miniature camera. Coupled split-image range-viewfinder. Rapid film transport lever automatically cocks shutter. Heligon or Xenon f : 2.0/50 mm. hard coated lens. 36-exposure cartridge. Compur Rapid shutter (B, 1,  $\frac{1}{2}$ , etc., to  $\frac{1}{500}$  second). Flash synchronization. Time locking device.

**Agfa**  
**KARAT 12/3,5**

The Karat 12/3.5 camera which combines a low price with a surprising performance has found countless enthusiastic users. Many amateurs like using the 12-exposure cartridge, as it is just sufficient for an enjoyable snapshooting day.

The Agfa Apotar producing extremely sharp pictures is a three-element Anastigmat of the high speed of f : 3.5. The Prontor Super shutter (B, 1,  $\frac{1}{2}$ , etc. to  $\frac{1}{300}$  second) is fitted with delayed action selftimer. For time exposures a "T" button is provided. The camera is easily focused by turning the front lens mount. A special lock prevents double exposure and blanks. Smooth-acting release built into camera body. Built-in direct vision viewfinder producing a large and bright image. Automatic film counter. At the touch of a button, the lens board snaps into position, thus making the camera instantly ready for exposure.

An attractive, low-priced miniature camera with Agfa Apotar f : 3.5/55 mm. lens. Prontor Super shutter. Delayed action selftimer. 12-exposure Karat cartridge.



**Agfa**  
**ISOLETTE V**

This beautifully styled new Isolette model is of a slightly simplified design enabling countless amateurs to purchase a high-quality camera combining the advantages offered by the Isolette with a budget-sized price.

The Isolette "V" camera is fitted with the excellent three-element Anastigmat Agfa Agnar f : 4.5, focal length  $3\frac{1}{8}$  in., producing extremely sharp pictures. The lens is corrected for high-fidelity colour rendering. The Vario shutter can be set for B,  $\frac{1}{25}$ ,  $\frac{1}{75}$ , and  $\frac{1}{200}$  second or the Pronto selftimer shutter for  $\frac{1}{25}$ ,  $\frac{1}{50}$ ,  $\frac{1}{100}$ , and  $\frac{1}{200}$  second. A "T" button is provided for long-time exposure. — Other features worth mentioning: Smooth-acting, convenient release. Built-in Newton viewfinder. Accessory shoe. Front lens focusing. Hinged spool holder. Film pressure plate. — By taking twelve  $2\frac{1}{4} \times 2\frac{1}{4}$  in. pictures on  $2\frac{1}{4} \times 3\frac{1}{4}$  in. (120) film, the cost per picture is reduced to a considerable extent.

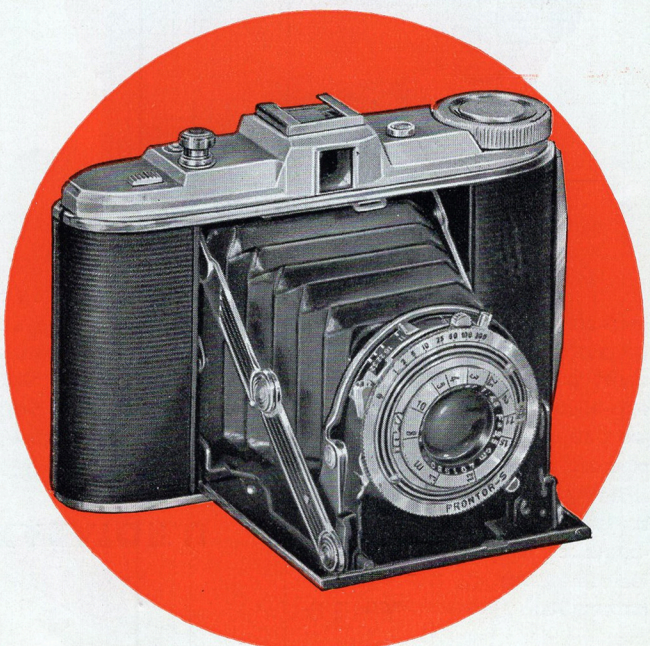
The extra low-priced new Isolette model. Square pictures  $2\frac{1}{4} \times 2\frac{1}{4}$  in. Agfa Agnar f : 4.5/85 mm. hard coated lens. Vario or Pronto (selftimer) shutter and flash synchronization.

**Agfa**  
**ISOLETTE 4,5**

Anybody who is looking for a camera that he expects to yield excellent pictures with a minimum of effort should examine the Agfa Isolette camera. The smart, handy Isolette, small and versatile as it is, will win everybody's approval. No wonder that it ranges among the most popular roll film cameras. The square picture size of  $2\frac{1}{4} \times 2\frac{1}{4}$  in. allows twelve exposures on  $2\frac{1}{4} \times 3\frac{1}{2}$  in. (120) film. The camera can always be held in the same position. This feature, in combination with the spring-brace mechanism and the conveniently located release, gives instant readiness for exposure.

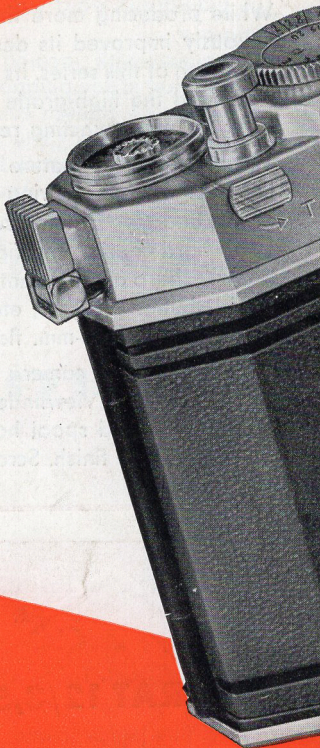
The high-grade Agfa Apotar f : 4.5 hard coated Anastigmat produces extremely sharp negatives which may be enlarged to any desired size. The Prontor Super shutter (B, 1,  $\frac{1}{2}$ , etc., to  $\frac{1}{300}$  second) is provided with delayed-action selftimer and a 3-mm flash contact. An interlocking mechanism prevents double exposures.

Spring-brace camera. Appealing  $2\frac{1}{4} \times 2\frac{1}{4}$  in. picture size. Agfa Apotar f : 4.5/85 mm. hard coated lens. Prontor Super shutter with delayed action selftimer and flash synchronization. "Red Dot" double exposure prevention device. Scratch-proof Robusit covering.



## The True Value of a Camera

is primarily determined by sound design principles, precision-made component parts and, above all, by its optical performance. Sharpness, brilliancy, and plastic appearance of pictures depend on perfect lenses. Agfa cameras use highly perfected Agfa anastigmats or other high-grade lenses such as Schneider Xenon or Rodenstock Heligon. All lenses are fully colour-corrected to meet all requirements of modern colour photography. The anti-reflex coating adds to the brilliancy of the pictures.



AGFA CAMERA WERK MÜNCHEN