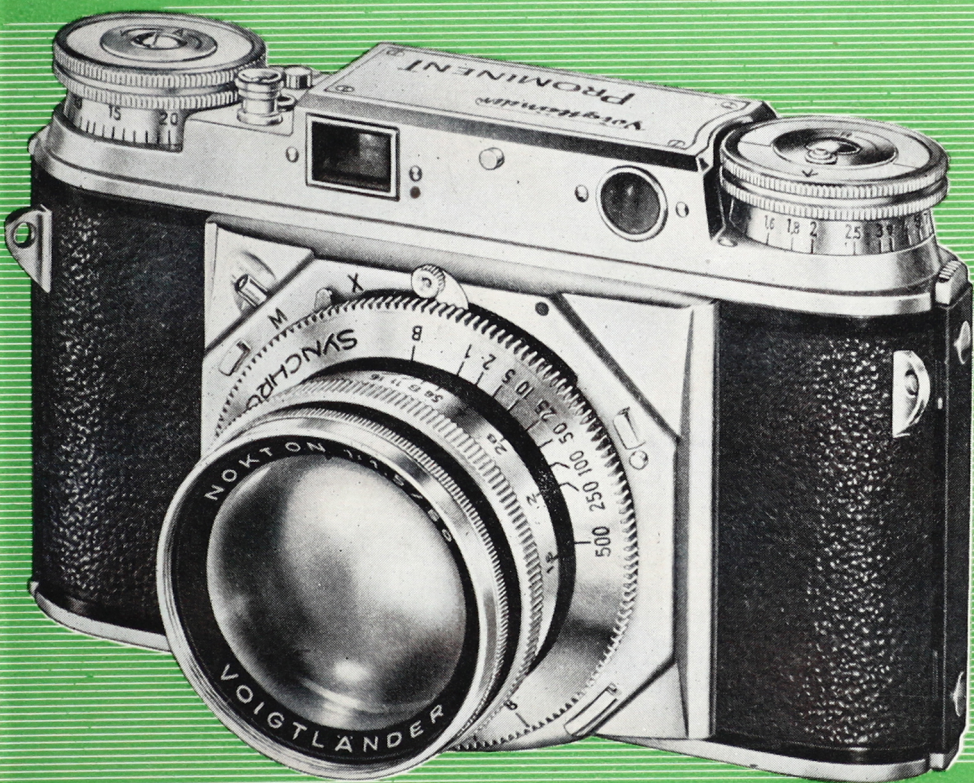


Voigtlander



known the world over

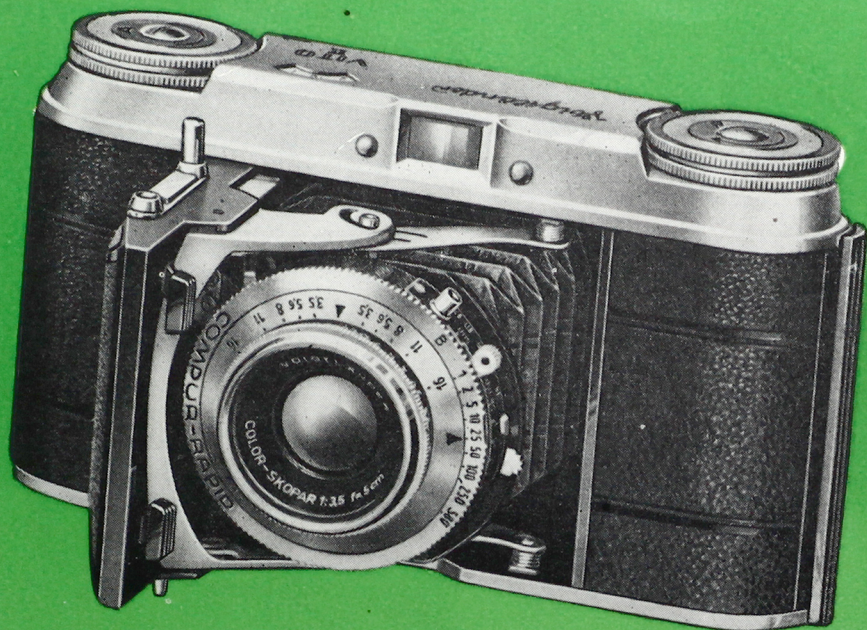
BETTER Lenses

BETTER Pictures

While the jewel-like precision workmanship of a fine camera is usually apparent almost at once, the capabilities and performance of its lens can only be proven one way and that is by actually using it. Voigtlander Cameras invite this challenge because every model is now fitted with a high efficiency anastigmat lens, part of a new series which mark a great and decisive advance in modern lens design.

New scientific methods of computation plus the use of new type of glass have made it possible to attain a degree of definition, contrast and a sparkling quality never before possible to attain.

The results are brilliant pictures even under adverse light conditions, sharp to the very edges even at full aperture, fine crisp detail and most important of all, the *faithful reproduction of colors.*



35 mm

36 EXPOSURES per cartridge

1" x 1 1/2" (24 x 36 mm)

A smart, streamlined, pocket-size, camera, the only one in this price range equipped with the new Voigtlander high-efficiency anastigmat COLOR-SKOPAR f:3.5 in X/Compur-Rapid or Prontor-S shutter, both synchronized for flash. Optical direct-vision finder, film counter, double lock, depth-of-field scale are some of the features. Operated at eye-level for rapid shooting; scales visible from above. Partly exposed films can be interchanged very easily. A small, versatile camera at a reasonable price.

Dimensions: 5 1/8 x 2 7/8 x 1 5/8 ins.

Weight: about 16 oz.

VITO II with Color-Skopar f:3.5 lens (50mm) in Prontor-S Shutter, 1 sec. to 1/300th; with built-in flash and built-in self-timer.

VITO II with Color-Skopar f:3.5 lens (50mm) in Compur Rapid Shutter, 1 sec. to 1/500th; with built-in flash.

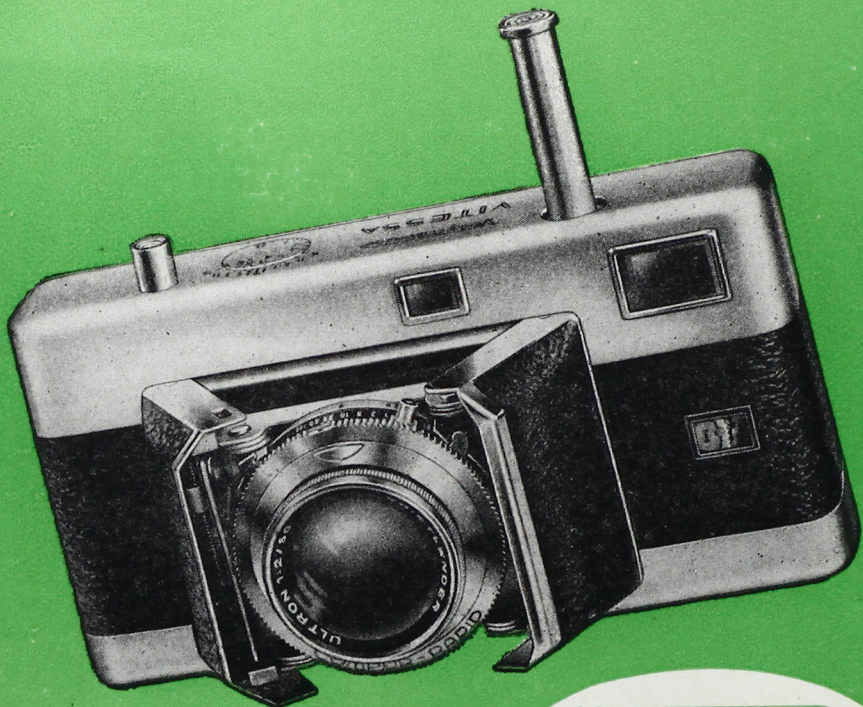
ACCESSORIES AVAILABLE:

Eveready Carrying Case
29mm Light Yellow Filter
29mm Medium Yellow Filter
29mm Chrome Lens Hood

29mm Focar Lens No. 1
for close-ups 18" to 31 1/2"
29mm Focar Lens No. 2
for close-ups 12" to 17"

Voigtlander

VITO II



35 mm

36 EXPOSURES per cartridge
1" x 1½" (24 x 36 mm)

Voigtlander

VITESSA

A most interesting camera of new design developed by Voigtlander. Its outstanding feature is the quickwind coupling: one press—click!—transports the film, counts the exposure, winds the shutter ready for shooting. In addition, there is the telemeter finder (viewfinder and rangefinder in one eye-piece) with parallax correction, Compur shutter synchronized for flash, film counter, double lock, and scratch-proof pressure plate. A smart, most up-to-date pocket camera. Small, handy and beautifully finished with no jutting-out parts. Press . . . snap! Almost as quickly as you can say it! Just the thing for sequence shots of important highlights of sporting events.

Dimensions: 5 3/8 x 3 x 1 5/8 ins.

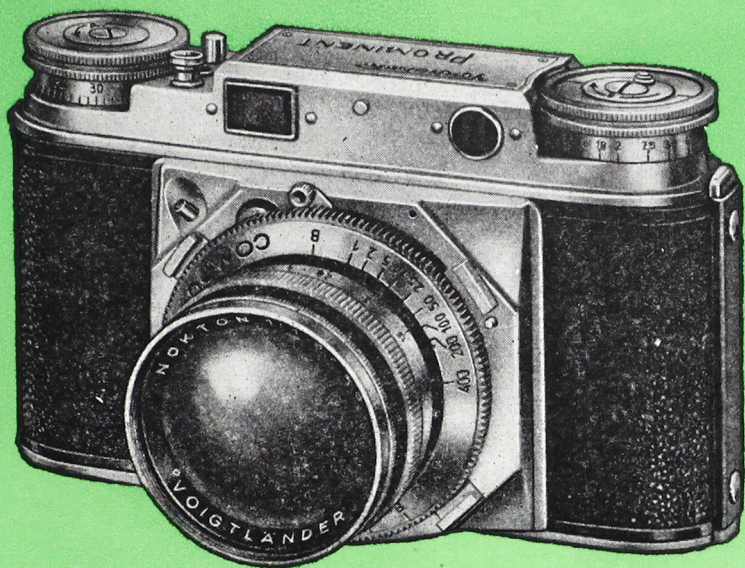
Weight: about 24 oz.

VITESSA with Ultron f:2 lens (50mm) in Compur Rapid Shutter, 1 sec. to 1/500th; with built-in flash.

ACCESSORIES AVAILABLE:

Eveready Carrying Case
32mm Light Yellow Filter
32mm Medium Yellow Filter
32mm Chrome Lens Hood

32mm Focar Lens No. 1
for close-ups 18" to 31½"
32mm Focar Lens No. 2
for close-ups 12" to 17"



Voigtlander **PROMINENT**

35 mm

36 EXPOSURES per cartridge
1" x 1½" (24 x 36 mm)

There are good cameras, there are very good cameras, and then there is the new Voigtlander PROMINENT. It is designed for interchangeable lenses, diaphragm shutter, telemeter-finder (viewfinder and rangefinder in one eye-piece) coupled with the lens. Shutter setting coupled with filmwinding. Sharply outlined pictures with electronic flash at 1/500th second! Operated at eye level, it is eminently suitable for quick shooting. Partly exposed films can be interchanged very easily. The first-class miniature camera for the press photographer or the exacting amateur. Dimensions: 5¼ x 3⅝ x 3¼ ins.

Weight: about 31 oz.
without lens about 25 oz.

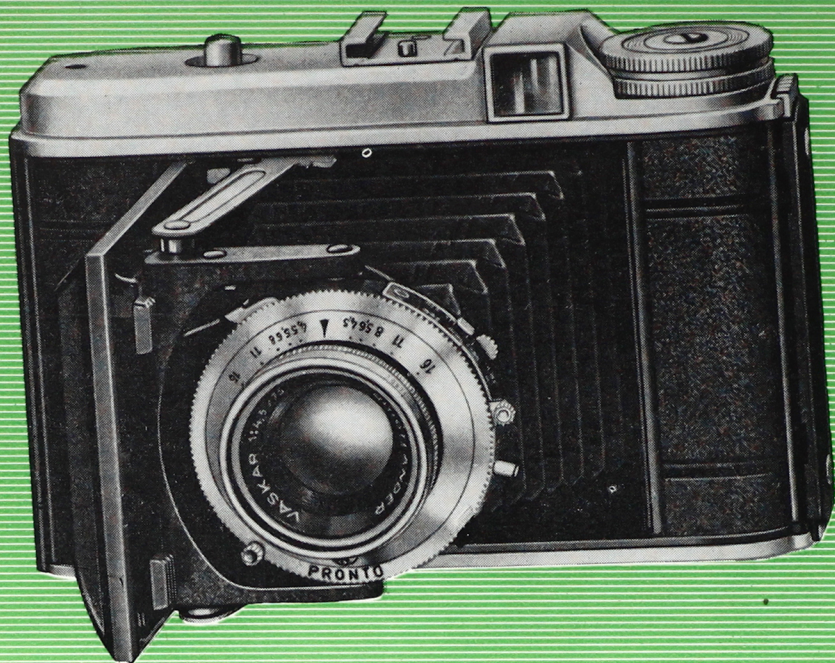
PROMINENT with Nokton f:1.5 lens (50mm) in Compur Rapid fully synchronized shutter, 1 sec. to 1/500th, with built-in self timer.

PROMINENT with Ultron f:2 lens (50mm) in Compur Rapid fully synchronized shutter, 1 sec. to 1/500th, with built-in self-timer.

ACCESSORIES AVAILABLE:

Eveready Carrying Case
47mm Light Yellow Filter
47mm Medium Yellow Filter
47mm Chrome Lens Hood

47mm Focar Lens No. 1
for close-ups 17" to 32"
47mm Focar Lens No.2
for close-ups 12" to 17"



2 1/4" x 2 1/4"

(6 x 6 cm)

12 EXPOSURES per roll

Voigtlander

PERKEO I

This small, light-weight camera takes pictures 2 1/4" x 2 1/4", just large enough for the album. It incorporates the essential features of modern camera construction: smart appearance, chrome trim, streamlined body, all parts conveniently located for comfortable shooting, new Voigtlander anastigmat VASKAR f:4.5, plus locking device, flash contact, self-timer, zone focusing for snapshots, depth-of-field ring, and others. A good camera for the amateur, easy to handle, at a moderate price.

Dimensions: 5 x 3 1/2 x 1-11/16th ins.

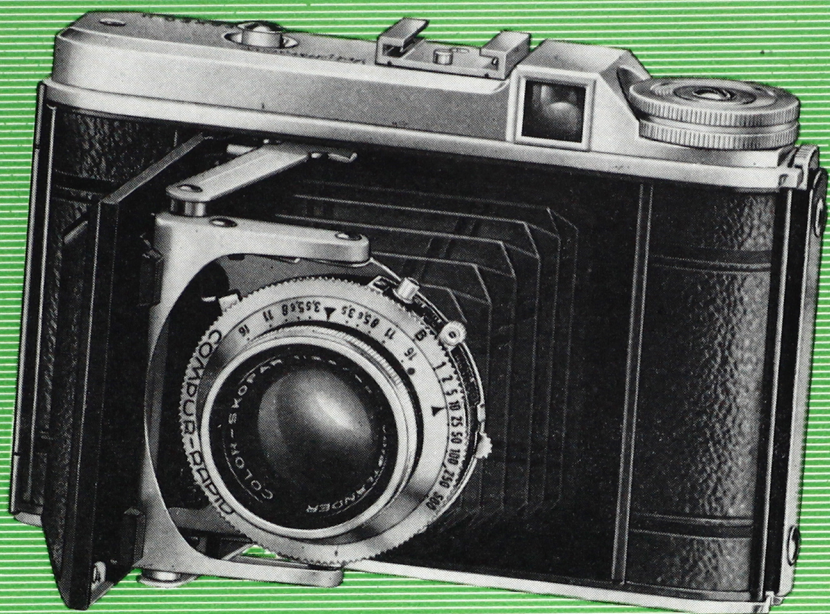
Weight: about 16 oz.

PERKEO I with Vaskar f:4.5 lens (75mm) in Pronto Shutter, 1/25 to 1/200 sec.; with built-in flash and built-in self-timer.

ACCESSORIES AVAILABLE:

Eveready Carrying Case
32mm Light Yellow Filter
32mm Medium Yellow Filter
32mm Chrome Lens Hood

32mm Focar Lens No.1
for close-ups 18" to 31"
32mm Focar Lens No. 2
for close-ups 12 1/2" to 17 1/2"



Voigtländer

PERKEO II

2 1/4" x 2 1/4"

(6 x 6 cm)

12 EXPOSURES per roll

As small as PERKEO I, this model is of even still smarter appearance, more versatile and of even higher performance, being equipped with the new high-efficiency anastigmat COLOR-SKOPAR f:3.5. The fast lens combined with the speed of the Compur-Rapid shutter makes it possible to photograph fast-moving subjects under poor light conditions. Other advantages over model I are these: Film winding automatically interlocked with film-counter from 1 to 12, and double exposure prevention. A perfect 2 1/4 x 2 1/4 camera for black-and-white as well as color.

Dimensions: 5 x 3 1/2 x 1-11/16th ins.

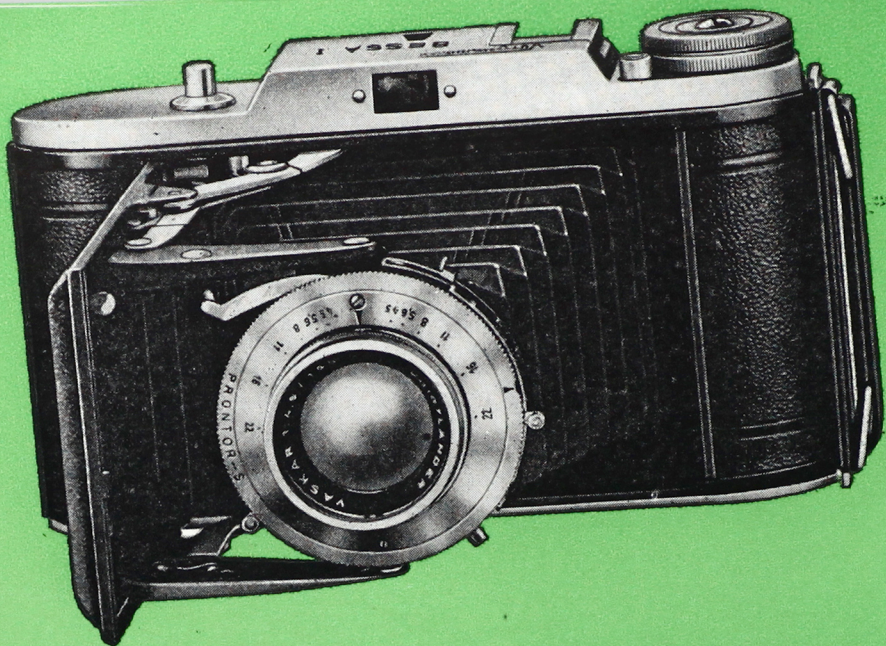
Weight: about 18 oz.

PERKEO II with Color-Skopar f:3.5 lens (80 mm) in Synchro-Compur fully synchronized M-X Shutter, 1 sec. to 1/500th.

ACCESSORIES AVAILABLE:

Eveready Carry Case
32mm Light Yellow Filter
32mm Medium Yellow Filter
32mm Chrome Lens Hood

32mm Focar Lens No. 1
for close-ups 18" to 31"
32mm Focar Lens No. 2
for close-ups 12 1/2" to 17 1/2"



2 1/4" x 3 1/4"

(6 x 9 cm)

8 EXPOSURES

OR

1 5/8" x 2 1/4" (4 1/2 x 6 cm)

16 EXPOSURES

Voigtlander

BESSA I

This newest model of the BESSA I (of which over 800,000 are in use throughout the world) represents the latest refinement in the development of this camera. Self-timer, optical direct vision finder corrected for parallax, double exposure prevention device. A special mask is provided which allows 16 pictures 1 5/8" x 2 1/4" per roll. Any 2 1/4" x 3 1/4" film can be used, whether on 120 or 620 spools. This new BESSA is destined to make a great number of friends, just as the former models did.

Dimensions: 6 3/4 x 3 7/8 x 1 7/8 ins.

Weight: about 27 oz.

BESSA I with Vaskar f:4.5 lens (105mm) in Prontor-S Shutter, 1 sec. to 1/250th; with built-in flash and built-in self-timer.

BESSA I with Color-Skopar f:3.5 lens (105mm) in Prontor-S Shutter, 1 sec. to 1/250th; with built-in flash and built-in self-timer.

BESSA I with Color-Skopar f:3.5 lens (105mm) in Compur-Rapid fully synchronized Shutter, 1 sec. to 1/500th; with built-in self-timer.

ACCESSORIES AVAILABLE:

Eveready Carrying Case
37mm Light Yellow Filter
37mm Medium Yellow Filter
37mm Chrome Lens Hood

37mm Focar Lens No. 1
for close-ups 17" to 32"
37mm Focar Lens No. 2
for close-ups 12" to 17"



Voigtlander

RANGEFINDER
BESSA II

2 1/4" x 3 1/4"

(6 x 9 cm)

8 EXPOSURES

This smart, particularly beautifully shaped camera with its precision tele-meter-finder (combined viewfinder-rangefinder) is the model for the amateur pictorialist who prefers a larger picture size.

It is the only camera equipped with the new high-efficiency anastigmat COLOR-HELIAR f:3.5 (or COLOR-SKOPAR f:3.5), and possesses a range of high-class technical features: Compur-Rapid shutter with self-timer, fully synchronized for flash, depth-of-field ring, all parts conveniently located for quick operation, all scales visible from above.

Dimensions: 6 3/4 x 4 x 2 ins.

Weight: about 31 oz.

RANGEFINDER BESSA II with Color-Skopar f:3.5 lens (105mm) in Compur Rapid fully synchronized M-X shutter, 1 sec. to 1/500th; built-in self-timer.

RANGEFINDER BESSA II with Color-Heliar f:3.5 lens (105mm) in Compur Rapid fully synchronized M-X shutter, 1 sec. to 1/500th; built-in self-timer.

ACCESSORIES AVAILABLE:

Eveready Carrying Case
37mm Light Yellow Filter
37mm Medium Yellow Filter
37mm Chrome Lens Hood

37mm Focar Lens No. 1
for close-ups 17" to 32"
37mm Focar Lens No. 2
for close-ups 12" to 17"

Voigtlander

KONTUR SPORTSFINDER

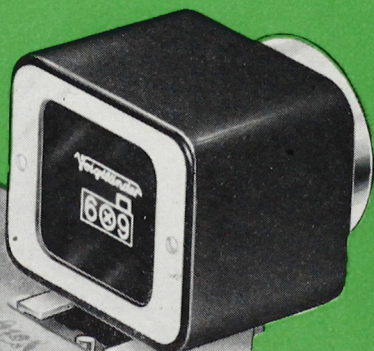


Both eyes are kept open while sighting the subject. The eye watching the subject directly will see it in its full size and brightness, while the eye looking into the finder will see a dark area with four solid white lines forming a rectangle. These solid lines show the field embraced by the camera when taking medium or distant shots.

There is also a dotted (parallax) area which indicates the exact angle of view when shooting close-ups at a distance of 3 feet. A small bright luminous dot shows the center of the field.

You simply study the composition of your picture or watch your subject to capture peak expression or action while you keep both eyes open all the time.

Has fitting to attach to standard shoes. Special clip-on adapters are available for Voigtlander cameras not equipped with shoes.





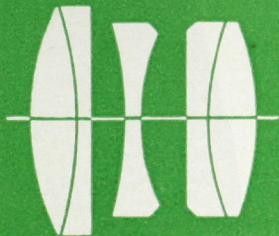
VASKAR f:4.5 Lens

This new three element Voigtlander Anastigmat will do a lot for a lens priced so reasonably. It is intended for the budget-wise amateur with limited means but who nevertheless demands fine results. Like all Voigtlander Lenses the Vaskar is factory coated for utmost efficiency.



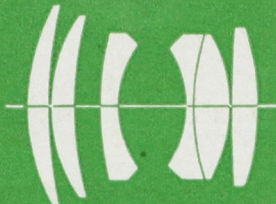
COLOR-SKOPAR f:3.5 Lens

Within a relatively short time this new four element lens has achieved a brilliant name for itself. Exceptionally good definition, brilliance of contrast and natural rendering of colors characterize this lens as one of the Voigtlander high efficiency anastigmats. Guaranteed to produce negatives capable of being enlarged many diameters.



COLOR-HELIAR f:3.5 Lens

New optical discoveries have led to a new computation of the HELIAR, the Voigtlander anastigmat of world-wide reputation. The new COLOR-HELIAR combines its acknowledged suitability for color photography with the scientific advance embodied in the new Voigtlander high-efficiency anastigmats. It is unsurpassed for portraits.



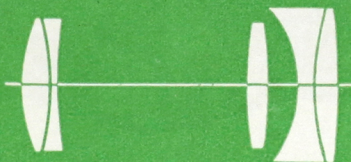
ULTRON f:2 Lens

Even at full aperture, this new high-efficiency lens gives needle-sharp definition to the edges of the picture, excellent, subtle contrast of detail with life-like effect, and is highly corrected for color reproduction. An all-purpose lens possessing outstanding resolving power.



NOKTON f:1.5 Lens

This is the fastest of the high-efficiency lenses. At the extreme aperture of f:1.5, it produces pictures which are needle-sharp to the edges even under adverse light conditions. Particularly suitable for pictures in the theatre, circus, or home, even without any additional lighting. The ideal lens for the reporter.



ADDITIONAL LENSES for "PROMINENT"

Two more of the new high-efficiency lenses for special purposes will be available in the near future: the tele-anastigmats TELOMAR f:5.5 100 mm focal length, and f:5.5 150 mm focal length, and an entirely new type of wide-angle lens, the ULTRAGON f:5.8 24 mm, each with mirror reflex attachment. Illustrated: TELOMAR.

Voigtländer

