

Cartridge Cameras

BEING A CATALOGUE OF
POCKET KODAKS, CART-
RIDGE KODAKS, BULLET,
BULLS-EYE AND FALCON
KODAKS AND ACCESSO-
RIES MANUFACTURED AT
ROCHESTER, NEW YORK,
BY THE EASTMAN KODAK
COMPANY, * * * * *

“YOU PRESS THE BUTTON,
WE DO THE REST”; OR,
YOU CAN DO IT YOURSELF.

**Cartridge
Camera
Catalogue.**

The Cartridge System.



WITH a Cartridge System Kodak, picture taking is easy.

It means photography minus the dark room, minus heavy yet fragile glass plates and bothersome plate holders. It means good pictures with little trouble.

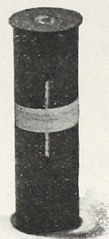
From the vantage ground of our developing and printing department we know just what cameras are giving the largest percentage of perfect pictures. In the busy season we develop thousands of negatives and turn out tens of thousands of prints in a single day. Naturally we watch the results closely. Soon after the introduction of the Bullet and Pocket Kodak cameras it became evident to us that they were turning out a higher average of work in the hands of the absolute novice than any camera big or little had ever produced before, while at the same time their capabilities were such as to recommend them to the most experienced amateurs. *We at once undertook to more thoroughly perfect the Cartridge System and increase its scope.*

How successful we have been is shown by the fact that last year we gave employment to 900 men and women in our camera factory alone, running 18

hours a day during the greater part of the summer in order to supply the demand for the Pocket, Bullet and Bulls-Eye Kodaks. During the past winter we doubled our capacity for the manufacture of Film Cartridges and the addition to our camera factory, recently completed, doubles the capacity of that department.

The absolute simplicity of the system has been the secret of its success. Indeed, so simple has photography become under our system of cartridge cameras that any bright boy or girl of ten years can successfully accomplish every step of picture-taking, from "pressing the button" to "doing the rest," yet in some styles we have provided the rising and falling front, rack and pinion movement, pneumatic shutters and other features required in cameras of the highest class, while all Kodaks from the cheapest to the most expensive have superb lenses.

In the cartridge system the film is put up in light-tight rolls that may be inserted in the camera in broad daylight. Extending the whole length of the strip of film and several inches beyond each end is a strip of black paper, which, in connection with the flanges on the spool, forms a light-proof cartridge.



FILM CARTRIDGE.

After inserting the spool in the camera and threading up the black paper the camera is closed and the key turned until the black paper has been reeled off and the sensitive film brought into place in the focal

plane. The black paper runs with and behind the film, and at proper intervals is marked in white ink with the number of the section of film, 1, 2, 3, etc. In the back of the camera is a small window of red celluloid through which the figures appear as the key is turned. The figures as seen through the window thus show just how far to turn the key and how many exposures have been made. After all the exposures have been made a few extra turns of the key entirely covers the film with black paper and the camera may be unloaded in daylight.

The black paper running the full length of and beyond the ends of the film, the pull of the roll holder is upon the paper only, a great improvement over other types, where, owing to a piece of black paper being attached to each end of the film, there are three sections and therefore a liability to pull apart.

Matters of Detail.



The Lens.

Every lens manufacturer turns out some good lenses—some poor lenses. Some manufacturers inspect their lenses more carefully than others and hold them up to a higher standard. They are said to be better lens makers—they are in reality better lens inspectors. The lenses used in our cameras must pass two inspectors—the lens factory inspector and a special inspector who has nothing to do with the making of the lens. We know that however excellent our camera may be it will be useless if we put in a poor lens—our inspection is, therefore, very rigid. *We allow none but perfect lenses to be used.*

Shutters.

All the shutters used in our cameras are mechanically accurate, are adapted to either time exposures or instantaneous work, and are provided with suitable sets of stops.

Adaptability.

Snap shots out of doors, time exposures indoors and flashlights at night all come within the scope of the Cartridge System cameras. Pocket Kodaks, Cartridge Kodaks and Bullet Kodaks use either plates or films.

Ounces vs. Pounds.

The cartridge cameras are lighter than glass plate instruments of the same capacity, and a film cartridge of twelve exposures 4 x 5, weighs but $2\frac{1}{2}$ ozs., while a dozen plates of equivalent size and half a dozen double plate holders to carry them in, weigh just three pounds, or nearly twenty times as much. It's no trouble to carry a half dozen film cartridges in one's pockets when out for a day's kodaking. They contain material for seventy-two shots and weigh only fifteen ounces. An equivalent in glass plates and holders would tip the scales at eighteen pounds—weight enough to spoil any outing.

Transparent Film.

The advantages of a light, transparent roll film over glass plates for outdoor work are so obvious that film is rapidly superseding glass plates for all except gallery work. Film making, with us, is no experiment, and the quality of our film is now fully equal to the best brands of plates on the market; indeed, for all work where there is a tendency to halation, film cartridges are far better than plates, owing to the thin support backed by black paper giving back no reflection.

On the Wheel.

The Pocket, No. 2 Falcon, No. 2 Bullet, No. 2 Bulls-Eye and No. 4 Cartridge Kodaks are especially adapted to use awheel. They are so light as to

add no perceptible weight to the wheel and for 1897 we have prepared a line of carrying cases for them that are light, convenient and practical. They are the result of a long series of experiments, are made to withstand wear and tear and have been given severe tests on all kinds of roads.

You Can "Do the Rest."

With every camera we furnish a carefully written and handsomely illustrated instruction-book, which explains each step of the picture taking and picture making in non-technical terms that anyone can understand. Many amateurs enjoy work in the dark room, and find as much pleasure in the making as in the taking of photographs. Films are quite as easy to handle in the developer as plates and are far less liable to injury. "You can do the rest."

"We Do the Rest."

Film cartridges can readily be sent through the mails when desired and our old offer still holds good:

"You press the button, we do the rest."

EASTMAN KODAK CO.

Rochester, N. Y.

EASTMAN PHOTOGRAPHIC MATERIALS CO., LTD.,

115-117 OXFORD STREET, { LONDON.
60 CHEAPSIDE,

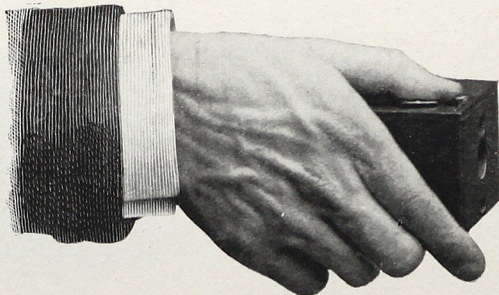
4 PLACE VENDOME, { PARIS.
5 AVE. DE L'OPERA,

EASTMAN KODAK GESELLSCHAFT, m. b. H.,

MARKGRAFEN STRASSE No. 91, BERLIN.

The Pocket Kodak.

Measures $2\frac{1}{4}$ x $2\frac{7}{8}$ x $\frac{3}{8}$ inches, makes a picture $1\frac{1}{2}$ x 2 inches, and weighs only 5 ounces.



The lens is carefully tested, is of the fixed focus type, and of sufficient length of focus ($2\frac{1}{2}$ ins.) to avoid distortion.

Built on the "Cartridge System" and can be loaded in daylight. Has improved rotary shutter and set of three stops for lens. The slides for changing stops and for time exposures are alongside of the exposure lever and always show by their position what stop is before the lens and whether the shutter is set for time or instantaneous exposures, thus acting as a warning.

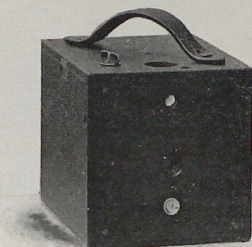
A Plate Holder for glass plates can be provided with each Pocket Kodak, no extra attachment being required. The change from a film to a plate camera can be made in a few seconds.

A rectangular Finder is provided for locating the image with accuracy. The construction is simple and accurate. The camera body is wonderfully strong and light.

In the quality of the work they will do, Pocket Kodaks equal the best cameras on the market. They make negatives of such perfect quality that enlargements of any size can be made from them. We do it, at a reasonable price, or you can do it yourself.

The Pocket Kodaks are covered with fine leather, and the trimmings are handsomely finished and lacquered. They are elegant, artistic and durable.

Pocket Kodak, covered with fine leather, with roll of film		
for 12 exposures, - - - - -		\$5 00
Leather Hand Carrying Case (for Pocket Kodak and three		
extra spools of film). Price of case only, - - -		75
Light Proof Film Cartridge, 12 exposures, - - -		25
Complete A B C Developing and Printing Outfit, - - -		1 50



No. 2 Falcon.

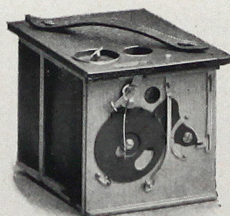
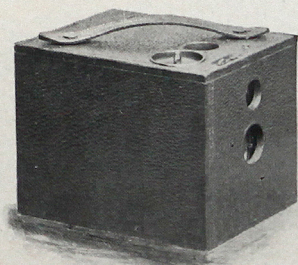
For square pictures $3\frac{1}{2} \times 3\frac{1}{2}$ inches; capacity, 18 exposures without reloading; size of camera, $4\frac{1}{2} \times 4\frac{1}{2} \times 5\frac{3}{4}$ inches, = 116 cubic inches; weight, 19 ounces; length of focus of lens, $4\frac{1}{2}$ inches.

This Kodak is built on the Cartridge System and can be loaded in daylight. Fitted with carefully tested achromatic lens with fixed focus, set of three stops, view finder, socket for tripod screw and safety shutter, which is perfectly adapted to time or instantaneous exposures.

Well made, covered with grain leather and handsomely finished.

Note—The prospective purchaser should bear in mind that the price of the Falcon camera includes every requisite for taking pictures except the film, whereas the price of most of the so-called five dollar plate cameras on the market includes only one plate holder, and a further expenditure of \$2 to \$3 is necessary if it is desired to make more than two exposures between each trip to the dark room.

No. 2 Falcon Kodak, not loaded,	-	-	-	-	\$5 00
Light-proof Film Cartridge, 12 exposures, $3\frac{1}{2} \times 3\frac{1}{2}$,	-	-	-	-	60
Black Sole Leather Carrying Case,	-	-	-	-	1 25
Complete A B C Developing and Printing Outfit,	-	-	-	-	1 50



Improved No. 2 Bulls-Eye.

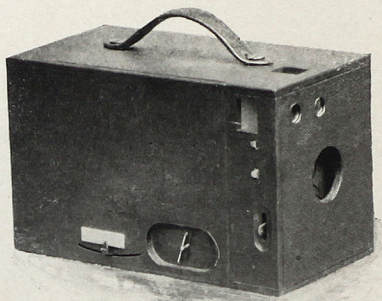
For square pictures, $3\frac{1}{2} \times 3\frac{1}{2}$ inches; capacity, 18 exposures without reloading; size of camera, $4\frac{1}{2} \times 4\frac{1}{2} \times 5\frac{3}{4}$ inches—116 cubic inches; weight, 18 ounces; length of focus of lens, $4\frac{1}{4}$ inches.

This camera is built on the "Cartridge System" and can be loaded in daylight. Fitted with achromatic lens, set of three stops, socket for tripod screw, and improved rotary shutter for snap shots or time exposures. The slides for changing stops and for time exposures are alongside of the exposure lever and always indicate by their position what stop is before the lens, and whether the shutter is set for time or instantaneous exposure. There is, therefore, no danger of committing the too common error of making snap shots with the smallest stop in the lens, or setting the shutter for a time exposure when a snap shot is intended, or vice versa. Handsomely finished, fitted with nickel-plated trimmings and covered with fine leather.

No. 2 Bulls-Eye, fitted with achromatic lens, not loaded,	-	\$8 00
Light-proof Film Cartridge, 12 exposures, $3\frac{1}{2} \times 3\frac{1}{2}$,	-	60
Black Sole Leather Carrying Case,	- - -	1 25
Complete A B C Developing and Printing Outfit,	- -	1 50

Improved No. 4 Bulls-Eye.

For rectangular pictures,
 4 x 5 inches; capacity,
 12 exposures without
 reloading. Size of
 camera, $4\frac{7}{8}$ x $5\frac{7}{8}$ x
 $9\frac{1}{4}$ inches=265 cubic
 inches; weight, 2
 pounds, 2 ounces; length of focus of lens, $6\frac{1}{4}$ inches.

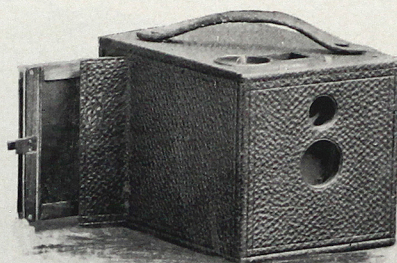


As manufactured by us, the No. 4 (4 x 5) Bulls-Eye Kodak is vastly improved over the original instrument. It is fitted with an achromatic lens of superior quality, having a set of three stops; has two finders, one for vertical and one for horizontal exposures; and is also provided with two sockets for tripod screws, one for vertical and one for horizontal exposures. Fitted with our improved rotary shutter, for snap shots or time exposures. The slides for changing stops and for time exposures are alongside of the exposure lever and always show by their position what stop is before the lens, and whether the shutter is set for time or instantaneous exposure. There is, therefore, no danger of committing the too common error of making snap shots with the smallest stop in the lens, or setting the shutter for time exposures when a snap shot is intended, or vice versa. It has a carefully adjusted focusing scale, and, being built on the "Cartridge System," can be loaded in daylight. Handsomely finished and covered with leather.

No. 4 Bulls-Eye, fitted with achromatic lens (not loaded),	\$12 00
Light-proof Film Cartridge, 12 exposures, 4 x 5, - -	90
Black Sole Leather Carrying Case, - - -	2 00
Complete A B C Developing and Printing Outfit, - -	1 50

Improved No. 2 Bullet.

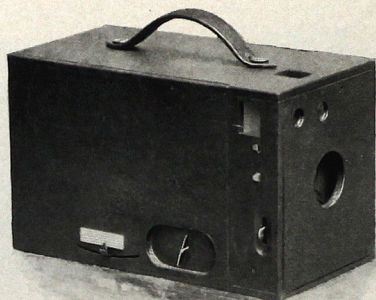
For square pictures, $3\frac{1}{2}$ x $3\frac{1}{2}$ inches; capacity 18 exposures without reloading; size of camera, $4\frac{1}{2}$ x $4\frac{1}{2}$ x 6 inches=121 cubic inches; weight 20 ounces; length of focus of lens, $4\frac{1}{4}$ inches.



SHOWING NO. 2 BULLET ADAPTED TO PLATES.

The Improved Bullet Kodak uses either roll films or glass plates (with plates the picture is $3\frac{1}{4}$ x $3\frac{1}{2}$ inches), and being built on the "Cartridge System," can be loaded in daylight. It is fitted with an achromatic lens, set of three stops, square finder, socket for tripod screw, and has our improved rotary shutter for snap shots or time exposures. The slides for changing stops and for time exposures are alongside of the exposure lever and always show by their position what stop is before the lens, and whether the shutter is set for time or instantaneous exposure. There is, therefore, no danger of committing the too common error of making snap shots with the smallest stop in the lens, or setting the shutter for a time exposure when a snap shot is intended, or vice versa. Handsomely finished and covered with leather.

No. 2 Bullet, fitted with achromatic lens, (not loaded),	-	\$10 00
Light-proof Film Cartridge, 12 exposures, $3\frac{1}{2}$ x $3\frac{1}{2}$,	-	60
Single Plate Holders, ($3\frac{1}{4}$ x $3\frac{1}{2}$ inches), each,	-	60
Glass Plates ($3\frac{1}{4}$ x $3\frac{1}{2}$ inches), per doz.,	-	35
Black Sole Leather Carrying Case,	-	1 25
Complete A B C Developing and Printing Outfit,	-	1 50

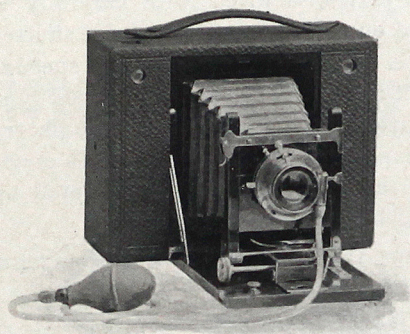


No. 4 Bullet.—for film and plates.

For rectangular pictures, 4 x 5 inches; capacity, 12 exposures without reloading; size of camera, $4\frac{7}{8}$ x $5\frac{7}{8}$ x $9\frac{1}{4}$ inches=265 cubic inches; weight, 2 lbs., 2 ozs.; length of focus of lens, $6\frac{1}{4}$ inches.

The No. 4 Bullet Kodak uses either roll films or glass plates, and being built on the "Cartridge System," can be loaded in daylight. It is fitted with an achromatic lens, set of three stops, two finders, one for vertical and one for horizontal exposures, two sockets for tripod screw, and has our improved rotary shutter for snap shots or time exposures. The slides for changing stops and for time exposures are alongside of the exposure lever and always show by their position what stop is before the lens, and whether the shutter is set for time or instantaneous exposure. There is, therefore, no danger of committing the too common error of making snap shots with the smallest stop in the lens, or setting the shutter for a time exposure when a snap shot is intended, or vice versa. Handsomely finished and covered with fine leather.

No. 4 Bullet, fitted with achromatic lens, (not loaded),	-	\$15 00
Light-proof Film cartridge, 12 exposures, 4 x 5,	-	90
Single Plate holders, (4 x 5 inches), each,	-	75
Glass Plates, 4 x 5, per doz.,	-	65
Black Sole Leather Carrying Case,	-	2 00



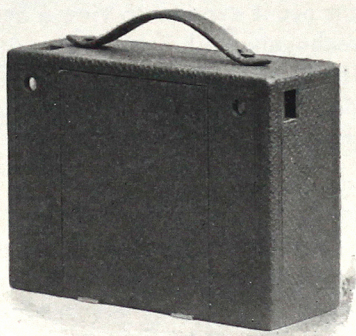
CARTRIDGE KODAK OPEN.

The No. 4 Cartridge Kodak.—For Film and Plates.

For rectangular pictures 4 x 5 inches; capacity 12 exposures without reloading; size of camera, $3\frac{1}{8}$ x $6\frac{3}{8}$ x $8\frac{1}{4}$ —167 cubic inches; weight, loaded, 2 lbs., 12 ozs.; length of focus of lens, $6\frac{1}{2}$ inches.

In the Cartridge Kodak we have adapted the "Film Cartridge System" to a Folding Kodak of the finest quality and greatest capabilities. In our years of experience in camera making no instrument which we have introduced has been so carefully planned, so severely tested, or has been the subject of so much thought and experiment as the Cartridge Kodak. The result is an instrument which is the embodiment of photographic perfection.

The Cartridge Kodak uses either our daylight loading Film



CARTRIDGE KODAK CLOSED.

Cartridges or glass plates, is fitted with carefully tested rapid rectilinear lenses and our own pneumatic release shutter fitted with iris diaphragm stops. This shutter has three speeds for instantaneous exposures; it makes short time exposures by one pressure of the bulb, the shutter closing when the bulb is released; and makes longer time exposures by pressing the bulb once to open the shutter and again to close it. It may be operated by the finger trigger instead of the bulb when so desired.

A wide angle lens, the cells of which fit the regular shutter, can be supplied when so desired.

The Cartridge Kodak is provided with a rising, sliding and falling front, two view finders, one for vertical and one for horizontal exposures, two sockets for tripod screws and is equally perfect as a hand or as a tripod camera. It has an index for focusing and when used with plates may be focused on the ground glass if desired.

When used with film there are no projecting parts, no attachments to become lost, no extras to be mislaid. The plate adapter is simple and compact and can be put in place or removed in five seconds.

Strength and reliability have not been sacrificed to mere lightness, nor efficiency to compactness. The finish is rich and beautiful. When closed for carrying it is inconspicuous and when open for use it exposes to view a bed and front board of highly polished mahogany with buffed brass fittings set off in brilliant contrast by the highly polished nickel shutter. In short, it has in a superlative degree, that rich and dainty finish which characterizes all our goods.

No. 4 Cartridge Kodak with Rapid Rectilinear lens and							
pneumatic shutter,	-	-	-	-	-	-	\$25 00
Light-Proof Film Cartridge, 12 exposures, 5 x 4 inches,	-	-	-	-	-	-	90
Wide Angle Lens,	-	-	-	-	-	-	5 00
Glass Plate Adapter, with Focusing Glass,	-	-	-	-	-	-	2 50
Double Glass Plate Holders, each,	-	-	-	-	-	-	1 00

Bicycle Carrying Cases.



THE POCKET KODAK BICYCLE CASE.

The Pocket Kodak Bicycle Carrying Case.

The Pocket Kodak Bicycle Carrying Case is made of the best black sole leather and will hold, beside the Kodak, three extra spools of film. It attaches to the frame in much the same manner as a tool bag and may be carried suspended from the top bar of the machine either at the head or at the seat post.

Price of Pocket Kodak Bicycle Case, - - - - \$1 00

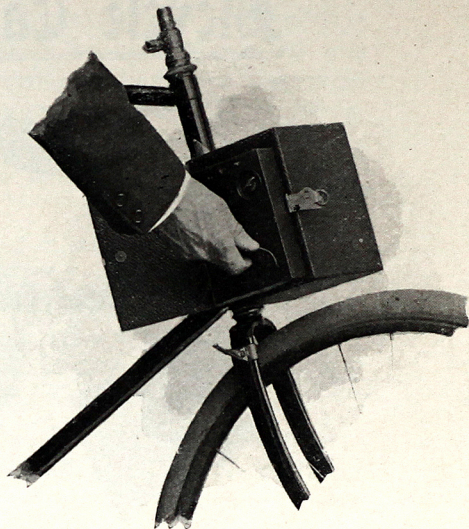
Style A Bicycle Case for No. 2 Bullet, Bulls-Eye and Falcon Kodaks.

The Style A case is strongly made of wood, covered with fine grain leather and lined with cloth and is fitted with springs on the inside which take up the vibration of the wheel and prevent injury to the camera. By means of two simple thumb screws it clamps securely to the head of the bicycle, and there being no play at points of contact with the machine it will not wear the enamel. It can be attached to the wheel so as to open either at the side or at the top, the door fastening with a strong catch.

Outside measurements $5\frac{3}{8} \times 5\frac{1}{2} \times 6\frac{7}{8}$ inches.

The door latch can be opened with one hand yet it cannot jar open and will not rattle.

By means of a set of adjustable washers (extra) the case may be held far enough in front of the bicycle head to allow for the free passage of the brake rod. It may also be provided (extra) with a lamp bracket attachment. A set of washers are furnished with each case and by their use the clamps will firmly grip any tubing from $\frac{7}{8}$ inch to $1\frac{1}{4}$ inches both inclusive. No wrench, screwdriver or other tools are necessary in making the attachment.



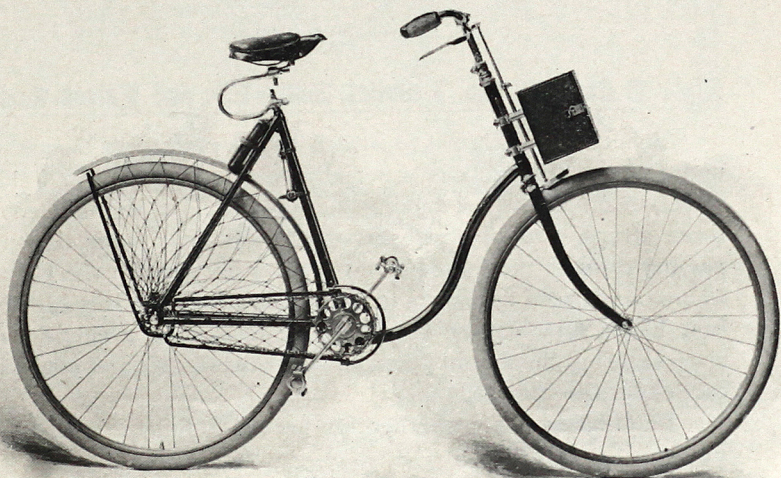
REMOVING THE CAMERA FROM CASE.

*No. 2 Bullet, Bulls-Eye and Falcon Kodak Bicycle Carrying Case, Style A,	-	-	-	-	-	-	\$2 00
Washers for holding Case in front of Brake Rod,	-	-	-	-	-	-	50
Detachable Lamp Bracket, (see page 23,)	-	-	-	-	-	-	25

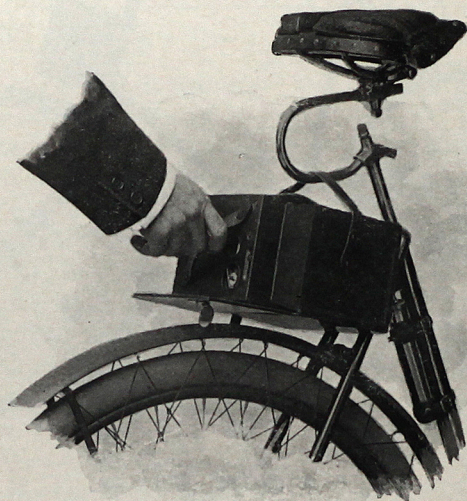
*In ordering specify whether for Bullet, Bulls-Eye or Falcon.



STYLE A BICYCLE CASE.
FOR NO. 2 BULLET, BULLS-EYE AND FALCON KODAKS.



STYLE A BICYCLE CASE.
SHOWING CASE HELD IN FRONT OF BRAKE ROD BY MEANS OF WASHERS
FOR NO. 2 BULLET, BULLS-EYE AND FALCON KODAKS.



REMOVING THE CAMERA.

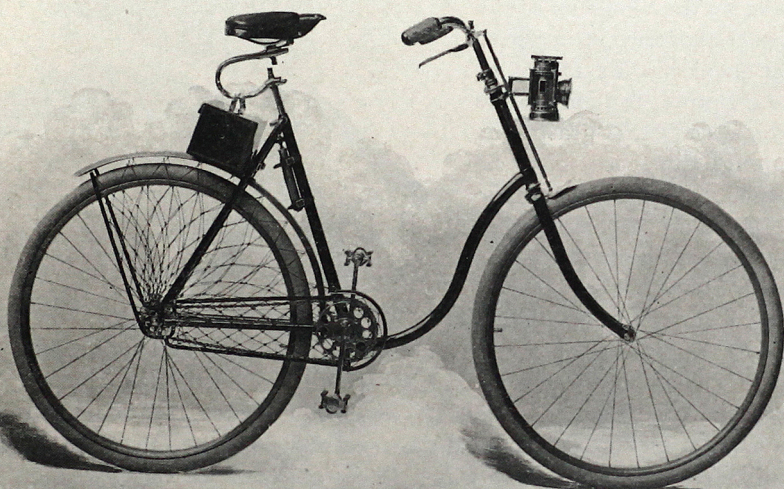
Style B Case for No. 2 Bullet, Bulls-Eye and Falcon Kodaks.

This case is designed to attach to the rear forks immediately under the saddle and is especially adapted to use on a lady's wheel, or on any wheel having mud-guards. It is provided with three straps, two of which attach to the rear forks, the third passing through the saddle spring proper or through the U spring where one is used as shown in the illustration. It is made of the best black sole leather and is easily accessible, a single strong clasp securing the flap in position. It makes a safe and convenient carrier for the camera.

In ordering state whether for use with Bullet, Bulls-Eye or Falcon.

Price, No. 2 Bullet, Bulls-Eye and Falcon Kodak Bicycle
Carrying Case, style B, - - - - - \$1 50

NOTE—This case is impracticable for very short riders as it requires a space of 6 inches in the clear between the mud-guard and the saddle spring.



STYLE B BICYCLE CASE.

FOR NO. 2 BULLET, BULLS-EYE AND FALCON KODAKS

Cartridge Kodak

Bicycle Case.

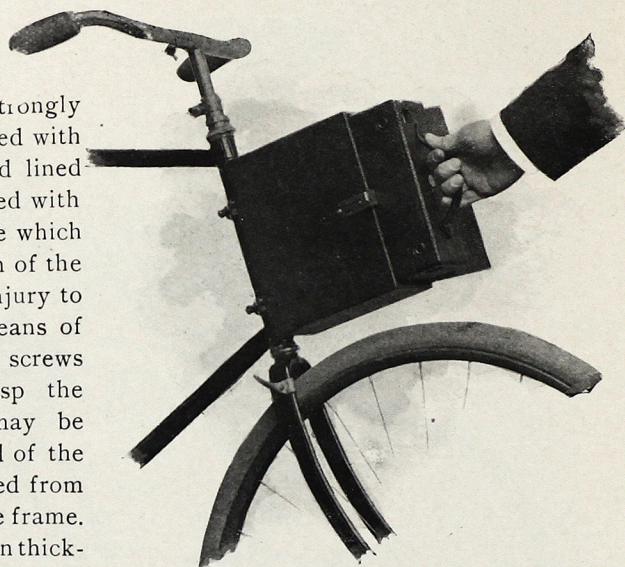
This case is strongly made of wood, covered with fine grain leather and lined with cloth and is fitted with springs on the inside which take up the vibration of the wheel and prevent injury to the camera. By means of two simple thumb screws which securely grasp the tubing the case may be attached to the head of the machine or suspended from the top bar, inside the frame. Being but $3\frac{3}{4}$ inches in thickness, it in no wise inconven-

iences the rider when carried in the latter position and stands but little chance of injury in case of a fall. The clamps can be attached to any side of the case (except, of course, the door) and in using it on the bicycle head the door may be at the top, at either side or directly in front, in which latter position the case presents almost no "wind resistance." There being no play at the points of contact with the machine, it will not wear the enamel.

Outside measurements, $3\frac{3}{4} \times 7\frac{1}{4} \times 8\frac{7}{8}$ inches.

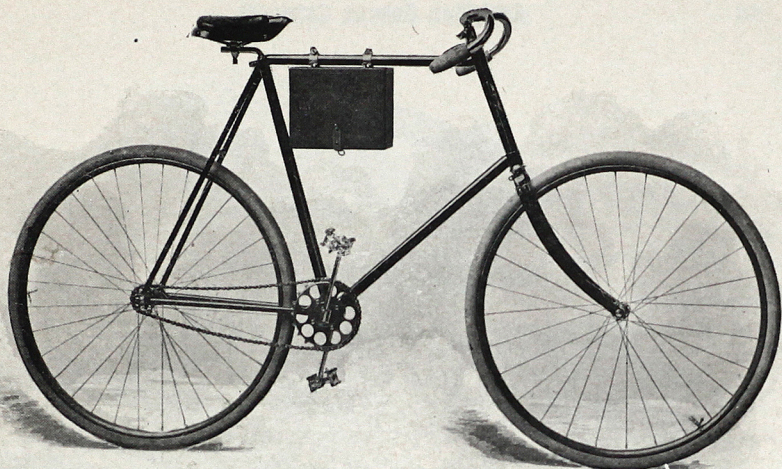
The door fastens with a strong brass catch which can be opened with one hand, yet cannot jar open and will not rattle.

By means of a set of adjustable washers (extra) the case may be held far enough in front of the bicycle head to allow for the free passage of a brake rod. It may also be provided (extra) with a lamp bracket attachment. A set of washers are furnished with each case and by their use the clamps will firmly grasp any tubing from $\frac{7}{8}$ to $1\frac{1}{4}$ inches, both inclusive. No wrench, screw driver or other tools are necessary in making the attachment,

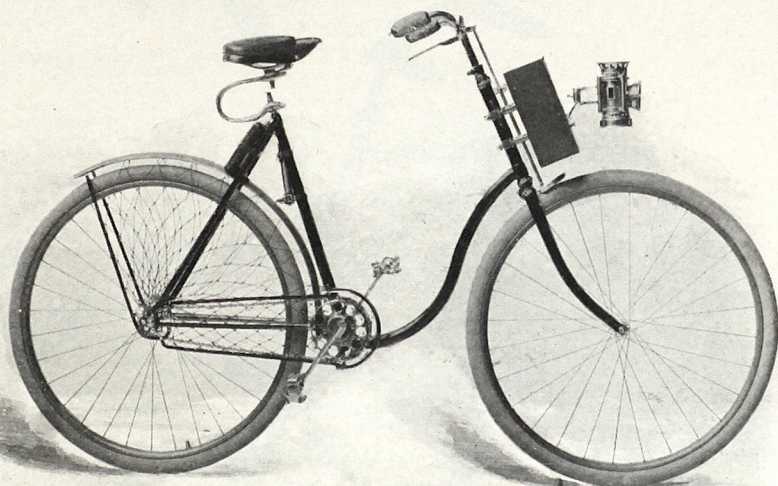


REMOVING THE KODAK.

No. 4 Cartridge Kodak Bicycle Case,	-	-	-	-	-	-	\$2 50
Washers for holding case in front of brake rod,	-	-	-	-	-	-	50
Detachable Lamp Bracket,	-	-	-	-	-	-	25

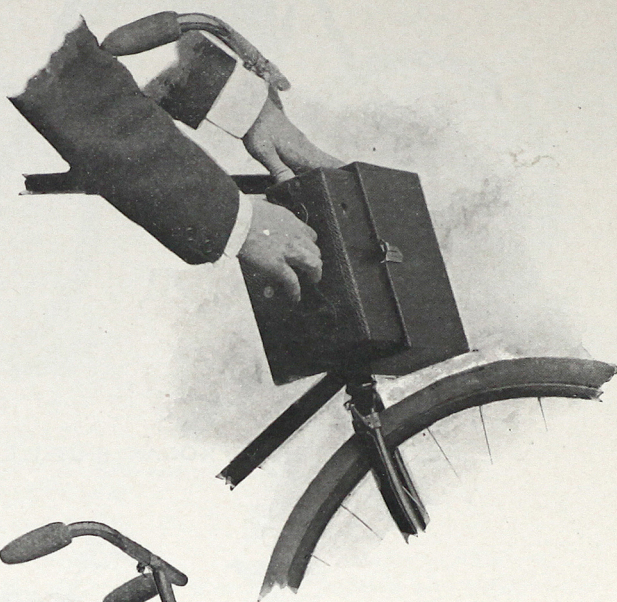


No. 4 CARTRIDGE KODAK BICYCLE CASE.
SHOWING CASE ATTACHED TO TOP BAR.

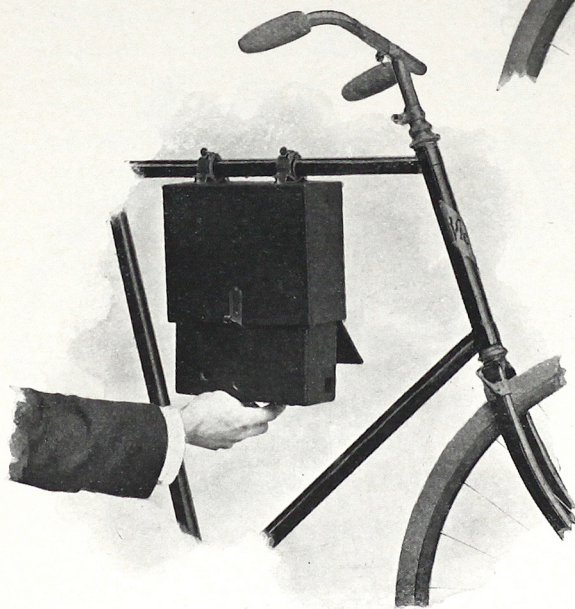


No. 4 CARTRIDGE KODAK BICYCLE CASE.
SHOWING CASE HELD IN FRONT OF BRAKE ROD BY MEANS OF WASHERS AND WITH LAMP ATTACHMENT.

REMOVING
THE KODAK.



TWO POSITIONS
OF CASE.





Eastman's A B C Developing and Printing Outfit.

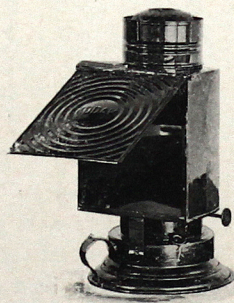
Includes every requisite for Developing, Printing and Finishing 24 pictures 4 x 5, or 3½ x 3½, or 96 Pocket Kodak pictures.

IT CONTAINS:

1 Eastman Improved Candle Lamp,	\$0 25	2 doz. 4 x 5 Solio Paper,	\$0 30
1 4 x 5 Printing Frame,	25	2 ozs. Solio Toning Solution,	15
1 " Glass for do.,	05	1 oz. Glycerine,	05
1 Glass Beaker,	12	Mask for making Pocket Kodak	
1 Stirring Rod,	05	Medallions,
4 4½ x 5½ Developing Trays,	40	Instruction Book,
1½ doz. Developing Powders,	25		
1½ lb. Hyposulphite Soda,	07		
1½ oz. Bromide Potassium,	10		
		Price complete, neatly packed,	\$1 50

Eastman's Kodak Dark-Room Lamp.

This lamp is well made and safe. It is equipped with improved burner carrying extra broad wick, and has new ventilating top ensuring a bright, steady flame. It is the safest dark-room lamp made, being fitted with both ruby and orange glass. The flame can be controlled from the outside, and it is fitted with adjustable shield to protect the eyes from the light and throw it directly on the work.

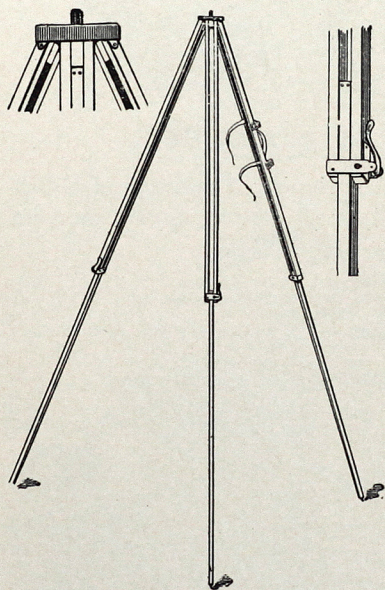


No. 1 Improved Kodak Dark-Room Lamps, 1 inch wick, each,	\$1 50
No. 2 do., ¾ inch wick, each,	1 00

Tripods.



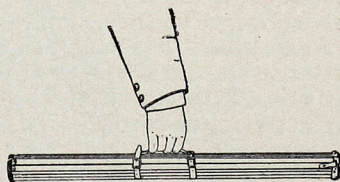
THE BULLS-EYE TRIPOD.



A compact and convenient tripod for use with any camera up to and including 4 x 5. A brass top plate with milled edges holds the socket screw securely in place and seats it in place in the camera when turned—thus doing away with the nuisance of the ordinary screw, turned by means of a key handle inconveniently located under the plate between the tripod legs, and always likely to be missing when most wanted.

The Bulls-Eye Tripod folds in two sections and is provided with a leather hand-strap for carrying. Made of the best seasoned spruce with brass fittings.

Price, - - - - \$2 00



THE KODAK TRIPOD.

Folds in four sections. Made in cherry only.

No. 1 Kodak Tripod, with folding lugs,	\$5 00
No. 2 Kodak Tripod, with solid lugs,	4 00
Leather Carrying Case with pocket for top,	3 00
Leather Carrying Case without pocket,	2 00

THE EASTMAN TRIPOD.

Folds in three sections.

No. 1 Spruce, for cameras up to 6½ x 8½, weight 1 lb., 10 oz.,	\$3 00
No. 1 Maple, for cameras up to 6½ x 8½, weight 2 lbs., 3 oz.,	3 00

NOTE—When kind of wood is not specified, we will furnish in maple.

THE VICTOR TRIPOD.

Folds in two sections.

No. 1 Spruce, for cameras up to 6½ x 8½, weight 1 lb., 11 oz.,	\$2 00
No. 1 Maple, for cameras up to 6½ x 8½, weight 2 lbs., 3 oz.,	2 00

NOTE—When kind of wood is not specified, we will furnish in maple.

THE STAFF TRIPOD.

This Tripod does not fold but closes together, forming a staff or cane.

†Improved Staff Tripod,	\$1 50
Special Adjustable Head, extra,	1 00

†When for use with Pocket Kodak so specify.

"ADJUSTABLE" TRIPOD HEAD.

By the use of our new "Adjustable" Tripod Head, the camera can be tilted to any desired angle and fastened securely in position without moving the tripod legs.

PRICE LIST.

No. 1. For the Eastman Tripod, No. 1 and Victor No. 1,	\$1 25
No. 2. For Kodak Tripod,	1 50

In ordering always give the name and number of Tripod for which you want adjustable head.

Any of the foregoing Tripods (except Staff and Bulls-Eye) may be ordered with the adjustable head and without the regular head, at the following prices:

Eastman No 1,	\$3 75
*Kodak No. 2,	4 80
Victor No. 1,	2 75

*We do not furnish the "Adjustable" head with folding lugs.

ADJUSTABLE JR. HEAD.

No. 1 "Adjustable Jr." for cameras up to 4 x 5, can be used on Bulls-Eye or Staff Tripods,	\$1 00
No. 2 "Adjustable Jr." for cameras up to 5 x 8, fits any ordinary Tripod,	1 50

Developing and Printing.



The Eastman Company was the first to render commercially possible the separation of the developing and printing from the picture taking. The division of labor inaugurated by it has brought picture taking within the reach of thousands of persons throughout the world who could not otherwise practice the art.

Carrying the division of labor still further, in our own factory we employ trained operators in every branch of the work. Men who do nothing but develop, girls who do nothing but print, men who do nothing but tone, girls who do nothing but mount, girls who do nothing but "spot" prints, men who do nothing but burnish, etc., etc. As a consequence each becomes skilled in his or her particular branch, and the result, under good superintendence, is good work—better work in particular and in average than can be done except under these favorable conditions.

Specimens.

A specimen photograph made with any of our cartridge cameras will be sent to any address in the United States upon receipt of 4 cents in postage stamps.

Price List.



POCKET KODAKS.

Pocket Kodak with film cartridge for 12 exposures,	\$5 00
Leather Hand Carrying Case (to hold Pocket Kodak and three extra spools of film). Price, case only,	75
Do. do., russet leather,	1 00
Leather Bicycle Carrying Case (to hold Pocket Kodak and three extra spools of film). Price, case only,	1 00
Box of film, 4 cartridges, 12 exposures each,	1 00
Film cartridge, 12 exposures,	25
Single Glass Plate Holders,	25
Thin crystal glass dry plates, 1 ½ x 2 inches, per doz.,	20
Complete Developing and Printing Outfit for 96 Prints,	1 50
Developing and printing 12 exposures,	50
Postage,	05
Developing only, roll 12 exposures,	25
Postage,	02
Printing and Mounting only, per doz.,	25
Postage,	05

NOTE—When there are any failures we furnish enough duplicates from the good negatives to make up the full number.

Mounts, white embossed, per doz.,	10
Staff Tripod, fitted for Pocket Kodak,	1 50
Wire Easels for Pocket Kodak Pictures, per box of 15,	25
Pocket Case, to hold 50 unmounted P. K. Prints,	25
Pocket Case, to hold 100 unmounted P. K. Prints,	50
Eastman's Indexed Negative Album, to hold 400 Pocket Kodak negatives,	1 00

Amounts less than One Dollar can be sent in postage stamps.

Price List—Continued.**BULLET, BULLS-EYE AND FALCON KODAKS.**

	No. 2. 3½ x 3½	No. 4. 4 x 5
Bullet Kodak (not loaded),	\$10 00	\$15 00
Bulls-Eye Kodak (not loaded),	8 00	12 00
Falcon Kodak (not loaded),	5 00	—
Film Cartridge, 12 exposures,	60	90
Developing and printing, 12 exposures,	1 50	1 80
Developing only, each,	06	08
Printing and mounting only, each,	08	10

On orders for less than one dozen prints, 25 cents extra will be charged.

*Sole Leather Carrying Case,	1 25	2 00
*Ladies' Buff Sole Leather Carrying Case, with name plate,	2 00	—
*Bicycle Carrying Case to clamp on head of machine, style A,	2 00	—
Washers to hold case in front of brake rod,	50	—
Lamp Bracket to attach to front of Carrying Case,	25	—
*Sole Leather Bicycle Carrying Case to attach under saddle style B,	1 50	—
⊕Single Glass Plate Holders for Bullet (3¼ x 3½ inches, for No. 2),	60	75
⊕Glass Dry Plates, per dozen (3¼ x 3½, for No. 2),	35	65
†Leather Carrying Case for 6 Plate Holders (for Bullet),	1 00	1 50
†Leather Carrying Case for 12 Plate Holders (for Bullet),	1 50	2 00
Focusing Glass for Bullet,	—	50

NO. 4 CARTRIDGE KODAK.

No. 4 Cartridge Kodak for 5 x 4 pictures with rapid rectilinear lens and pneumatic shutter (not loaded),	\$25 00
Wide Angle lens for No. 4 Cartridge Kodak,	5 00
Film Cartridge, 12 exposures 5 x 4,	90
Black Sole Leather Carrying Case with shoulder strap,	2 00
Developing, printing and mounting 12 exposures,	1 80
Developing only, each,	08
Printing and mounting only, each,	10
Bicycle Carrying Case for No. 4 Cartridge Kodak,	2 50
Washers to hold case in front of brake rod, per set,	50
Adjustable lamp bracket,	25

*In ordering state whether for Bullet, Falcon or Bulls-Eye.

⊕In ordering state if for use with '96 Bullet.

†The No. 4 case has also space for focusing glass.

Price List—Continued.

Glass Plate outfit, including adapter, ground glass, three double plate holders and black sole leather carrying case for three double plate holders, and focusing glass,	\$6 50
Special Glass Plate Outfit, including adapter, ground glass, 6 double plate holders and black sole leather carrying case to hold same, 10 00	
Glass Plate adapter with ground glass,	2 50
Double Glass Plate Holders, 4 x 5, each,	1 00
Black Sole Leather Carrying Case to hold three double plate holders and focusing glass,	1 00
Do. to hold six double plate holders and focusing glass,	1 50
Black Sole Leather Carrying Case to hold glass plate adapter, ground glass and 6 double plate holders,	2 50
Eastman's Extra Rapid Dry Plates, per doz., 4 x 5,	65
Lens Cap,	25

ENLARGEMENTS.

Standard Bromide, Platino-Bromide, Enameled Bromide or Matte-Enamel Bromide Enlargements from any size Negatives, mounted on cardboard with suitable margin :

	Each.	Per Dozen.
4¼ x 6½ each,	\$ 35	\$3 00
6½ x 8½, each,	50	5 00
8 x 10, each,	75	—
10 x 12, each,	1 00	—
11 x 14, each,	1 25	—
14 x 17, each,	1 50	—

Larger sizes in proportion.

Lantern Slides, each,	50	5 00
---------------------------------	----	------

EASTMAN'S SOLIO.

Size.	<i>A Rapid Printing-out Paper.</i>	Doz.	Gross.
3½ x 3½ (No. 2 Bullet or No. 2 Bulls-Eye),	\$ 15		\$1 00
4 x 5 (For 4 x 5 pictures or four Pocket Kodaks),	15		1 00

SECONDS.—A limited quantity of 4 x 5 (trimmed) Seconds at 50 cents per hundred.

SOLIO Combined Toning and Fixing Solution per 8 oz. bottle, 50 cents.

EASTMAN'S DRY PLATES.

Extra Rapid for Instantaneous Work.

1½ x 2 inches, (for Pocket Kodak), per doz.,	\$ 20
3¼ x 3½ inches, (for No. 2 Bullet), per doz.,	35
4 x 5 inches, per doz.,	65

Price List—Continued.**LANTERN SLIDE PLATES, ETC.**

Plates for making Lantern Slides, per dozen,	\$ 70
Cover Glass for Lantern Slides, per dozen,	35
Masks and Gummed Strips for Lantern Slides, per pkg.,	25

"BLUE PRINT" PAPER.

Ferro-Prussiate Paper, 2 dozen sheets, $3\frac{1}{2} \times 3\frac{1}{2}$,	\$ 16
Ferro-Prussiate Paper, 2 dozen sheets, 4×5 ,	20

CHEMICALS.

Eastman's Hydrochinon Developer Powders, per doz., sufficient for 48 oz. Developer,	\$ 50
Eastman's Pyro Developer Powders, per doz.,	50
Hyposulphite of Soda, pulverized, per pound,	10
Bromide Potassium, per ounce,	15
Citric Acid, 4 ounce bottle,	30
Oxalate Potash, per pound,	40
Protosulphate Iron, per pound,	10
Powdered Alum, per pound,	10
Solio Toning Solution, per 8 oz. bottle,	50
Solio Toning Solution can be shipped by mail in 4 ounce bottles as follows: 4 ounces Toning Solution, (<i>20c. extra postpaid</i>),	25
Solio Hardener, per 8 oz. bottle,	35

TRAYS.

Paper Developing Trays, for 4×5 , each,	\$ 10
Hard Rubber Trays, for 4×5 , and $4\frac{1}{4} \times 5\frac{1}{2}$ plates, each,	27

SPECIALTIES.

Eastman's Improved Orange Candle Lamp,	\$ 25
Luxo Flash Lamp,	1 25
Luxo Flash Powder, per oz. bottle,	60
Printing Frames, 4×5 , special, each,	25
Eastman's Negative Storage Album for 100 negatives, 4×5 , or 400 Pocket Kodak negatives,	1 00
Do. for 100 negatives, $3\frac{1}{2} \times 3\frac{1}{2}$,	75
Eastman's Wire Easels for Pocket Kodak pictures, per box of 15,	25
Eastman's Pocket Case for Pocket Kodak pictures (holds 50 unmounted prints),	25
Do., do., (holds 100 unmounted prints),	50

Terms.



The prices in this catalogue are strictly net, except to regular dealers who carry our goods in stock.

All prices are f. o. b. at Rochester. We make no charge for packing.

For the convenience of our customers we recommend that they make their purchases from a dealer in photographic goods as by so doing they can save both time and expressage, but where orders are sent direct, remittances must be by New York draft, express order, postal order, or currency (if currency, letter must be registered). Amounts less than one dollar may be remitted in postage stamps. We do not accept personal checks.

EASTMAN KODAK COMPANY,

Rochester, N. Y.

Patents.



The Kodak Camera, Roll Holder, the Kodet Camera, Bullet and Bulls-Eye Kodaks, Film, and processes, and machinery for manufacturing same, are covered by the following patents, owned by the Eastman Kodak Company :

No. 248,179,	October 11, 1881.
No. 306,594,	October 14, 1884.
No. 316,933,	May 5, 1885.
No. 317,049,	May 5, 1885.
No. 317,050,	May 5, 1885.
No. 355,084,	December 28, 1886.
No. 358,893,	March 8, 1887.
No. 370,050,	September 20, 1887.
No. 370,110,	September 20, 1887.
No. 370,111,	September 20, 1887.
No. 370,216,	September 20, 1887.
No. 388,850,	September 4, 1888.
No. 405,454,	June 18, 1889.
No. 407,396,	July 23, 1889.
No. 407,647,	July 23, 1889.
No. 408,596,	August 6, 1889.
No. 414,735,	November 12, 1889.
No. 417,202,	December 10, 1889.
No. 432,990,	July 29, 1890.
No. 433,020,	July 29, 1890.
No. 433,774,	August 5, 1890.
No. 433,775,	August 5, 1890.
No. 440,137,	November 11, 1890.
No. 441,831,	December 2, 1890.
No. 442,216,	December 9, 1890.
No. 464,260,	December 1, 1891.
No. 471,469,	March 22, 1892.
No. 472,257,	April 5, 1892.
No. 477,243,	June 21, 1892.
No. 479,305,	July 19, 1892.
No. 486,397,	November 15, 1892.
No. 501,866,	July 18, 1893.
No. 537,916,	April 23, 1895.
No. 539,557,	May 21, 1895.
No. 539,713,	May 21, 1895.
No. 554,769,	February 18, 1896.
No. 562,168,	June 16, 1896.
No. 572,326,	December 1, 1896.
No. 574,435,	January 5, 1897.
No. 575,208,	January 12, 1897.

Other patents pending.

Rochester.

GEORGE EASTMAN,	- -	1880
THE EASTMAN DRY PLATE CO.,	- -	1881-1884
THE EASTMAN DRY PLATE AND FILM CO.,	1884-	
	1889.	
	Capital, \$300,000.	
THE EASTMAN COMPANY,	- -	1890-1892
	Capital, \$1,000,000.	
EASTMAN KODAK COMPANY,	- -	1892
	Capital, \$5,000,000.	

London.

THE EASTMAN DRY PLATE AND FILM		
CO., - - - - -	- -	1885-1889
THE EASTMAN PHOTOGRAPHIC MATE-		
RIALS CO., L't'd, - - -	- -	1889
	Capital, £200,000.	

Definition of the word

"KODAK"

The *Standard Dictionary* says :
"Kodak is an arbitrary word constructed for trade-mark purposes."

We originated and own this trade-mark. No camera is a "Kodak" unless manufactured by the Eastman Kodak Company.

Don't let the clerk sell you any other camera under the name of "Kodak."

If it isn't our make, it isn't a
"Kodak."

*" You press the button,
We do the rest."*

EASTMAN KODAK CO.

ROCHESTER, N. Y.