



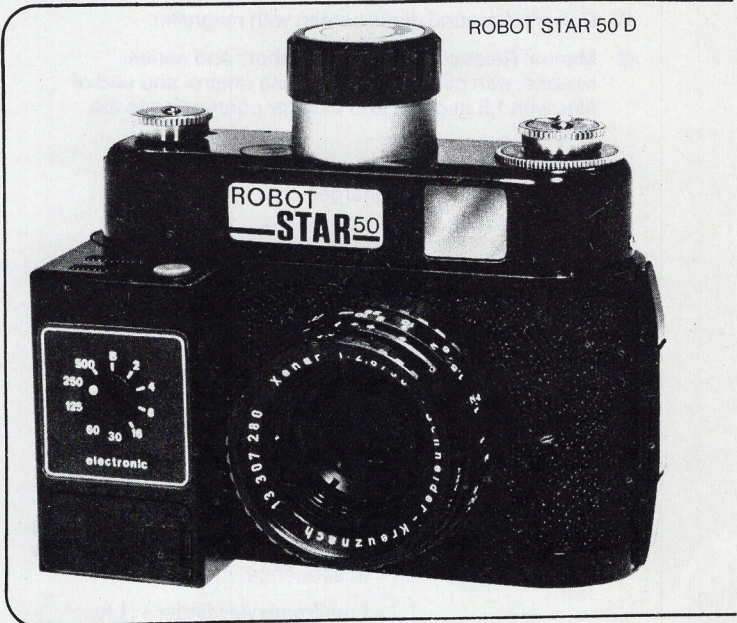
## ROBOT STAR 50 D

Recording Speed: max. 12 frames/sec.

The fast recording speed of this new and unique camera offers completely new dimensions of photography which were not given yet with the recording speeds achieved so far but now are made possible by the ROBOT fully automatic operation combined with a rotary shutter with electronic setting of shutter speeds and an integrated magnetic internal release.

With one single winding of the reliable spring motor the camera is ready to take 50 shots. At series release, the complete film can be exposed at an average recording speed of 12 frames/sec. Re-setting to single shots is possible as well as external release by foreign contacts or by radio for which the appropriate accessories are available.

The fully automatic function, the comprehensive range of accessories and the extremely high recording speed allow the adaption to the most different modes of application.



ROBOT STAR 50 D

STAR D	\$ 1499.00
STAR DA with 1/500 sec. only, no B and X	\$ 1299.00
Handpedal for STAR D	\$ 199.00

### Accessories for ROBOT STAR 50 D:

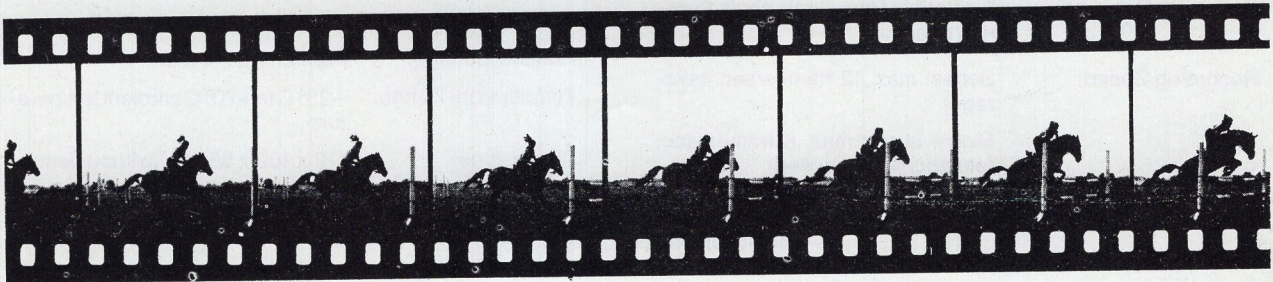
#### Interchangeable Lenses with screw mount

- Schneider Wide-Angle Xenagon 30 mm f/3.5 \$ 449.00
- Schneider Wide-Angle Xenagon 30 mm f/4 fix, with ring, in special flat mount 399.00
- Schneider Xenar 38 mm f/2.8 399.00
- Schneider Xenon 40 mm f/1.9 449.00
- Schneider Tele-Xenar 75 mm f/3.8 499.00
- Schneider Tele-Xenar 90 mm f/3.8 599.00
- Schneider Tele-Xenar 150 mm f/4.0 699.00

As all the ROBOT STAR cameras, the new ROBOT STAR 50 D is also operated with the highly reliable spring motor which is driven by a tropicalized, antimagnetic and unbreakable „Superflex“ stainless steel spring having a capacity of over 50 photos. Filmtransport, shutter cocking and frame counting is effected automatically after each shot.

The rotor-type shutter system operates absolutely free of any vibrations. It is also resistant against heat or cold and guarantees constant exposure of the film.

Its small dimensions, the rapid recording speed and also the clear 1:1 lumiframe viewfinder (for standard lenses up to Tele-Xenar 150 mm) make the ROBOT STAR 50 D being the ideal hand camera for all the tasks of the applied photography including photographic surveillance, motion analysis or even the keen amateur.



Original size

**ROBOT – reliable product of high precision quality**



### Further Accessories:

- NR (take-up) cassette with spool
- TR (feeding) cassette with spool
- SR quick-loading cassette with etui
- Universal elastic lenshood
- Universal ground glass screen with magnifier
- Manual Release Key for single shots and series release, with pilot lamp for release control and end of film, with 1,5 m cable and plug for connection to the camera
- Battery Rod 6 V with 1,5 m connection cable to the camera and 220 V recharger
- Manual Release Key for single shots and series release, with pilot lamp for release control and end of film, with 1,5 m cable and plug for connection to the battery rod
- Mounting and Contact Plate with cable tail for the battery rod
- Radio Remote Release (transmitter and receiver), with batteries and cable for connection to the camera
- Miniature Radio Remote Release (transmitter and receiver) with batteries and cable for connection to the camera
- Connection Cable 1,5 m with camera plug and cable tail
- 6 V silveroxide battery

### Technical Data:

Camera:	ROBOT STAR 50 D with spring motor for automatic shutter cocking and film transport up to 50 frames in sequence Lumiframe viewfinder 1:1 for f/38 - 150 mm Film rewind and frame counter	Release:	Manual, by hand contact, external impulse or radio for single and series release
Shutter:	All-metal rotary shutter with electronic setting of shutter speeds	Required Duration of Release Impulse:	Single Shots: min. 20 ms Series: permanent contact
Shutter Speeds:	Type A: 1/500 sec. + B only code fadaf Type B: 1/2 - 1/500 sec. + B code fadef	Power Supply:	Exchangeable 6 V silveroxide battery, external power supply possible
Shutter Speed Tolerance:	± 10 %	Plug Connection:	5-pole plug for the following functions: external release external power supply R-contact Filmend contact
Negative Size:	24 x 24 mm	Flash Synchronization:	At all shutter speeds
Recording Capacity:	50 frames	X-Contact:	Closing time 6 ms (depending on shutter speed)
Film:	35 mm miniature film	R-Contact:	Remote contact for external frame counter, signal etc. contact making during film transport duration of contact 40 - 80 ms (depending on spring tension) load factor 500 mA activ low
Cassettes:	Standard cartridges and NR cassettes TR cassettes when using film cuts SR daylight quick-change cassettes	Filmend Contact:	Permanent contact
Recording Sequence:	Reversible from single shots to series release	Temperature Range:	-20° C to +70° C ambient temperature
Recording Speed:	Series: max. 12 frames/sec. (average) Single shots: max. 8 frames/sec. (electrically controlled)	Dimensions:	112 x 102 x 55 mm (without lens)
Release System:	Magnetic internal release	Weight:	515 g (without lens)

- Technical modifications reserved -

**FULL 5 YEAR ROBOT WARRANTY BUYER PROTECTION**



PLEASE ASK FOR COMPLETE INFORMATION ON ROBOT ROYAL, STAR, RECORDER, MOTOR-RECORDER, AUTO-SEQUENCE CAMERAS, LENSES, MAGAZINES, ACCESSORIES-FOR INDUSTRY, SCIENCE, SPORTS, IDENTIFICATION, SURVEILLANCE, ETC. (SEE REPLY CARD)



MAIL: POB 427 • SHIPMENTS : 34-11 62nd STREET  
WOODSIDE, NY, 11377 - (212) 565-0004