

KORELLE-REFLEX

—SEVEN CAMERAS
IN ONE . . .

"the choice of the expert"

Cover illustration is a typical Korelle-Reflex Shot



BURKE & JAMES, Inc.

223 W. MADISON ST.

• ESTABLISHED 1897 •

CHICAGO, ILLINOIS

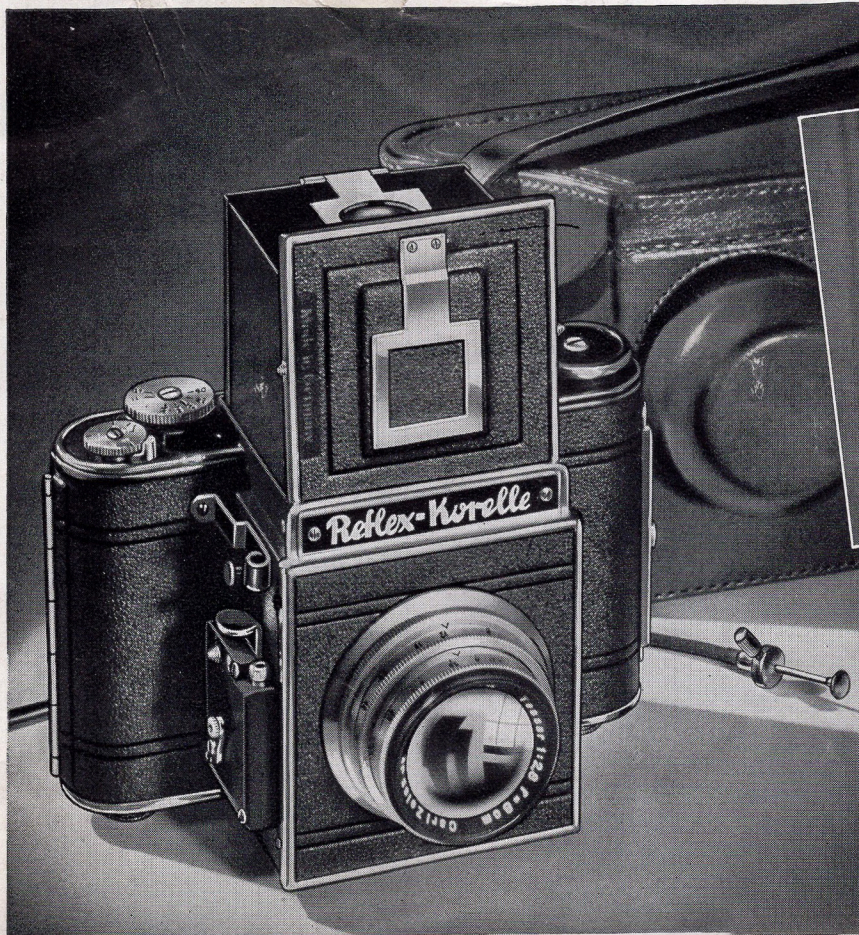
CABLE ADDRESS "INGENTO"

CATALOG No. 1138

PRINTED IN U. S. A.

KORELLE - REFLEX

(Actual Print Size)



POPULAR NEGATIVE SIZE 2 1/4 x 2 1/4 Inches (6x6cm.)

Korelle negatives make effective contact prints as well as enlargements up to many diameters. Note the wide range of types and subjects in Korelle examples above and on the opposite page.

The ideal size for the widest range of work and the utmost economy is served in the production of 12 negatives 2 1/4 x 2 1/4 inches from each roll of standard No. 120 roll film.

Other pictures taken with the Korelle Reflex are shown—Telephoto Shots . . . Microscopic Work . . . Extender Tube Photos.

Only the Korelle Reflex Offers All These Precision Features for Universal Use

● **CRITICAL REFLEX FOCUSING.** Korelle is of true reflex design. The highly polished "top surfaced" mirror reflects the image to the ground glass viewing screen. The full size image simplifies work of adjusting the diaphragm and the focusing to almost automatic operations. A special built-in magnifier enables the operator to secure critical focus instantly. Tripping the vibrationless shutter swings the mirror out of the way permitting the image to be impressed upon the film. The focusing hood is self erecting for quick use. A supplementary eye-level wire finder is provided for extra speed in sports photography for following fast action.

● **PARALLAX ELIMINATED.** No need to worry about missing the vital part of your subject or cutting off the feet or head of a figure even in a close-up when using the Korelle. Such failures are the result of a separate finder and taking lens. In the Korelle the image you sight on the ground glass is formed by the same lens that takes the picture . . . you see exactly what you shoot in full negative size.

● **FOCAL PLANE SHUTTER.** Whether you're taking still life or fast action the right shutter speed is immediately available. The high efficiency of the Korelle focal plane shutter assures even exposure to all parts of the film.

● **AUTOMATIC FILM STOP—NO DOUBLE EXPOSURES.** Korelle features such advanced refinements as a rapid film advance. After an exposure is made the film winding key is given one complete revolution plus a fraction of a turn when an automatic stop tells you that the film is in proper position for the next exposure. Winding the film automatically winds and sets the focal plane shutter—and operates the exposure counter, telling you at all times the number of exposures made—the number left. The shutter may be set independently of the film wind when desired—and shutter speeds may be set before or after winding.

● **POPULAR PICTURE SIZE—2 1/4 x 2 1/4 IN. (6x6cm.)** Korelle's popular picture size, 2 1/4 x 2 1/4 inches, is ideal for the widest possible range of work—

● **INTERCHANGEABLE LENSES.** The Korelle is designed to permit the instant interchange of lenses. All Korelle lenses are threaded to fit the lens flange on the camera. Objectives of various focal lengths are available. Telephoto lenses provide for "large image" work, enabling the operator to secure close-ups of distant objects. Special long focal length lenses are listed herewith. In addition, a complete line of color filters and lens attachments are available.

● **COMPACT DESIGN—PRECISION CONSTRUCTION.** Master craftsmanship makes possible the compact size—measures only 5 3/4 x 3 1/2 x 3 3/4 inches. The aluminum alloy body with rich leather covering makes possible its extreme light weight—only 29 ounces. Every part of the Korelle is hand fitted for life-long use.

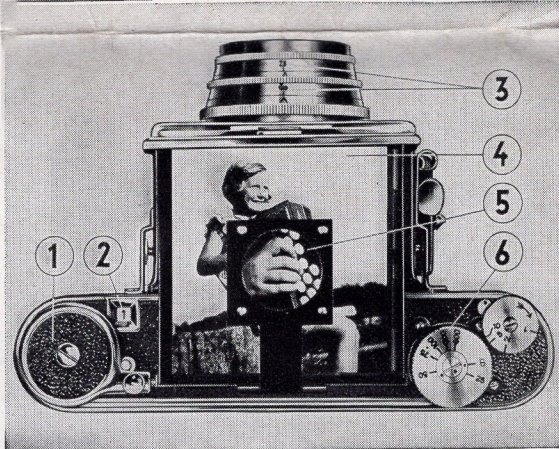
Model I—Shutter Speeds 1/25 to 1/500 Sec.

Model I Korelle Reflex cameras are fitted with a focal plane shutter that provides exposure speeds of 1/25, 1/50, 1/75, 1/100, 1/200 and 1/500th second and bulb.

Model I with F:3.5 Victor Lens Anastigmat lens of 75mm. (3-inch) focus. Recommended for all general types of work. Specify Number 401C when ordering. **\$62.50**
PRICE EACH.....

Model I with F:2.9 Radionar Lens In helical focusing mount. Anastigmat lens of 75mm. (3-inch) focal length. Specify Number 402C when ordering. **\$74.50**
PRICE EACH.....

Model I with F:2.8 Zeiss Lens Famous Zeiss Tessar lens of 75mm. (3 inch) focus. The finest lens for critical work. Specify Number 403C when ordering. **\$97.50**
PRICE EACH.....



See What You Shoot In the Ground Glass Viewing Screen

The illustration above shows you a Korelle camera as you look down into it when taking a picture. All adjustments are operated from the top of the camera, fully visible.

- 1—Rapid film advance key. Stops automatically when film is in proper position for next exposure.
- 2—Exposure counter, mechanically coupled to film advance. Works automatically.
- 3—Lens adjustments for diaphragm stop and focusing plainly visible from top. Lenses focus from 3 1/2 feet to infinity.
- 4—Ground glass focusing screen enables you to focus the image accurately—shows you instantly field of view covered by lens.
- 5—Focusing magnifier—enlarges a portion of the ground glass image for critical focusing.
- 6—Focal plane shutter—speeds to 1/500th second. May be set before or after winding. Coupled to film advance, eliminating double exposures.

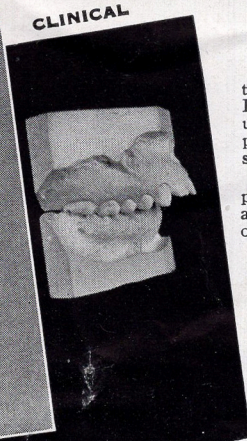
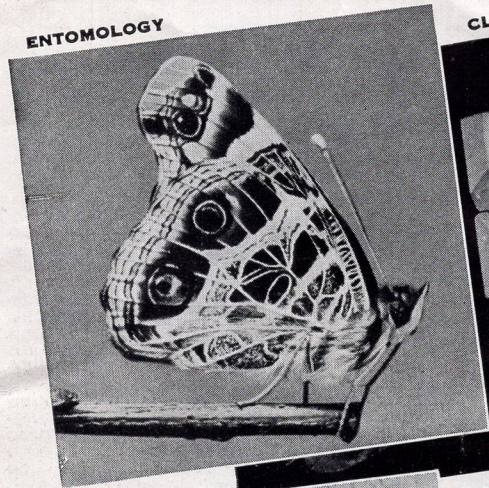
Model II—Shutter Speeds 2-1/500 Sec.

Model II Korelle Reflex cameras are fitted with a special focal plane shutter, providing speeds of 2, 1, 1/2, 1/10, 1/25, 1/50, 1/75, 1/100, 1/200, 1/500th second and bulb. A special delayed action mechanism on Model II enables operator to take his own picture, etc.

Model II with F:2.9 Radionar Lens Anastigmat lens of 75mm. (3-in.) focus. In helical focusing mount. Specify Number 404C when ordering. **\$102.50**
PRICE EACH.....

Model II with F:2.8 Zeiss Tessar Lens Extra fine lens equipment. High speed anastigmat of 75mm. (3 inch) focal length in helical focusing mount. Specify Number 405C when ordering. **\$124.50**
PRICE EACH.....

—Many Cameras in One!



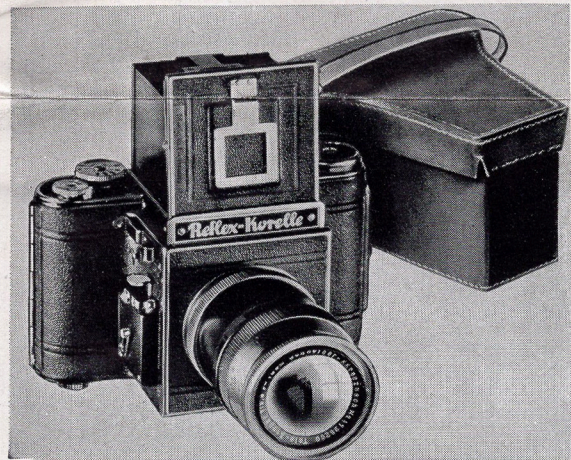
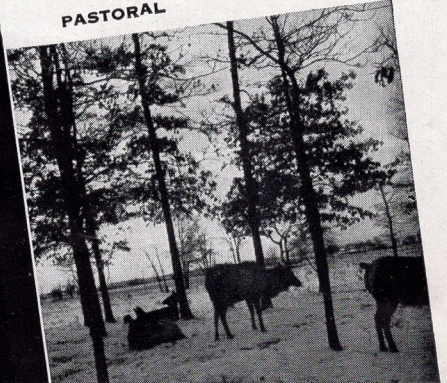
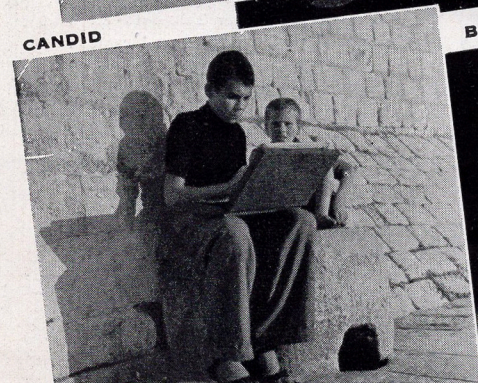
THE CHOICE OF EXPERTS—FOR ALL BRANCHES OF PHOTOGRAPHY

A list of Korelle Reflex owners reads like a "Who's who in Photography." Amateurs and professionals alike, from New York to Hollywood, praise it for its versatility in delivering the finest pictures under all types of conditions—candid shots . . . newspaper work . . . portraiture . . . copying . . . micro-photography . . . color lantern slides . . . sports and many other related branches of photography.

They like the sharp, clean-cut professional quality of the negatives produced by the Korelle—ample in size for pleasing contact prints and large enough to permit enlarging many diameters without loss of detail or appearance of grain.

The simplicity of operation and precision quality of its construction are other favorite points with Korelle's thousands of users. Control of the depth of focus on the ground glass, absolute freedom from parallax, elimination of double exposures and its instant readiness give them the complete satisfaction of a perfect picture when the ordinary camera would otherwise fail. Check for yourself every feature described here—compare with any camera at any price.

The extreme ease and simplicity of securing perfect pictures with a Korelle will astonish you. A wide choice of well-designed accessories and attachments are available for the Korelle, and you'll find a complete listing of special lenses for the Korelle, on the next page.



Special Korelle Reflex Cameras for Newspaper, Portrait, Sports, Etc.

Equipped with special telephoto lens for all types of special photographic purposes such as presswork, portraits, sports, nature study and advanced amateur work. Camera is the Korelle Model II with focal plane shutter, providing exposure speeds of 2, 1, 1/2, 1/5, 1/10, 1/25, 1/50, 1/75, 1/100, 1/200, 1/500th second and bulb. Includes the special delayed action feature. Complete with a special heavy sole leather ever-ready carrying case.

With Xenar F:5.5—7 1/8 inch Telephoto Lens

The long focal length of this high quality lens provides a greatly magnified image size . . . gives you close-ups of distant subjects. Its aperture rating of F:5.5 is ample for high speed candid work. With Ever-ready case.

Order by No. 501C..... **\$142.50**

With F:2—5 1/2" Cooke Lens for Difficult Work

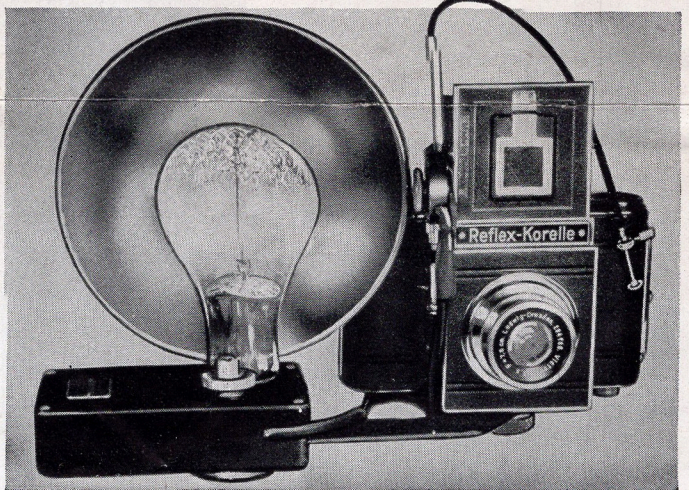
Same as the camera above but fitted with a super speed F:2 Cooke anastigmat lens of 5 1/2 inch focal length. Provides extra speed for indoor work. With Ever-ready case.

Order by No. 502C..... **\$369.50**

With F:2.7—6 1/2 inch Ernemann Lens

Same as the cameras above but equipped with an F:2.7 Ernemann anastigmat lens of 6 1/2 inch focus . . . combines speed with large image size. With Ever-ready case.

Order by No. 503C..... **\$195.00**



KALART MICROMATIC SPEED FLASH OUTFIT FOR KORELLE REFLEX MODELS I or II

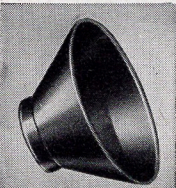
Speed flash photography opens up a new world of picture taking possibilities. You will be amazed at the many photographic adventures waiting to be explored with this new Photoflash Synchronizer attached to your Korelle Reflex.

The Synchronizer provides a scientific means of accurately timing the action of the Korelle focal plane shutter with the flash of the bulb. Even at high shutter speeds this perfect synchronization is maintained.

With the flash gun mounted on your Korelle camera, you can master every picture problem—day or night. At indoor sporting events, basketball, hockey—no matter how fast the action, you are assured of well-exposed negatives. When taking "candid" indoor shots—and portraits, wherever you happen to find your subject, the speed flash makes you master of the situation. In outdoor photography, where back or strong side lighting makes it necessary to soften shadows a synchronized flash is the correct solution. It stretches your picture taking day all around the clock.

Perfect mechanical and electrical design of the synchronizer assures smooth, dependable and thoroughly reliable operation. Adjustments are so simple—so positive that anyone can install it on the camera.

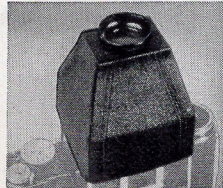
SYNCHRONIZER ONLY. Consists of synchronizer mechanism, bakelite battery case, battery, polished reflector and instructions. Order by No. 504C..... **\$13.50**



Sunshade

A definite aid in producing snappy, brilliant negatives. Permits only light rays from subject to pass thru the lens. 37mm. (1 1/8") size for F:2.9 or F:2.8 lenses.

Each **\$1.50**



Focusing Hood

Slips over the regular focusing hood. Built-in magnifying eyepiece shows an enlarged image. A real aid to accurate focus in brilliant sunshine, etc.

Each **\$3.50**



Ever-ready Case

Of heavy brown sole leather with shoulder strap. Has plush lining. Permits instant use without removing camera from the case. Finest construction.

Each **\$8.50**

ALL SUBJECTS CAN BE SUCCESSFULLY HANDLED WITH A KORELLE-REFLEX



Above—"Cicada"—made with 8 inch extension tube—auto spotlight for illumination. Subject posed under anaesthesia.



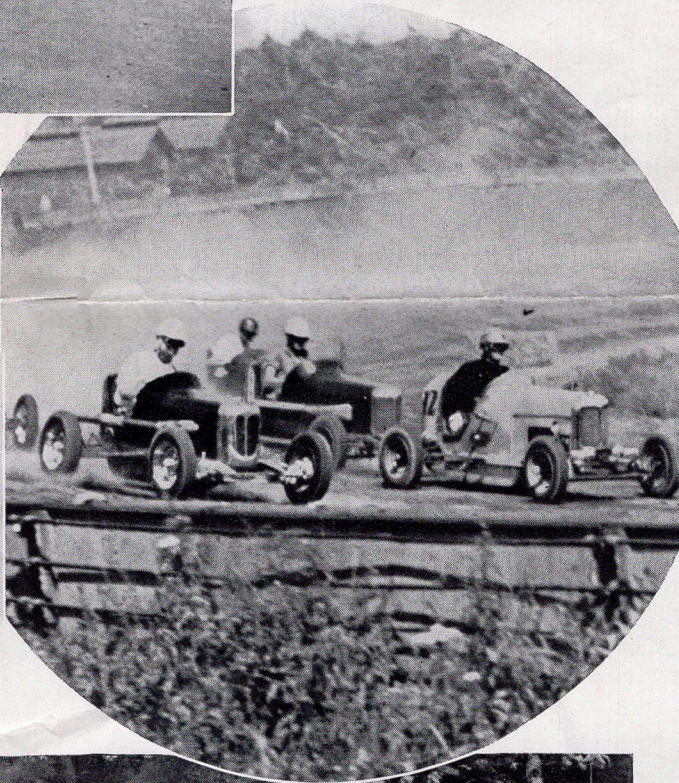
Above—Scenes like this easy for Korelle.

Right—arresting motion at the miniature auto races.

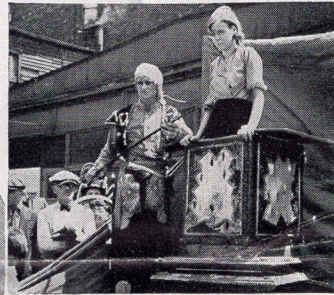


Above—portrait of a colt.

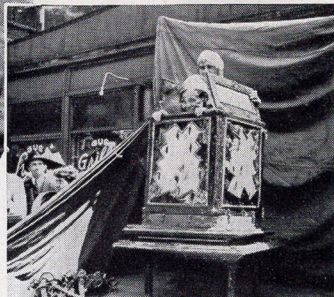
Below—Korelle handles subjects like this in its stride. Animals, scenes, outings, etc., are easy subjects.



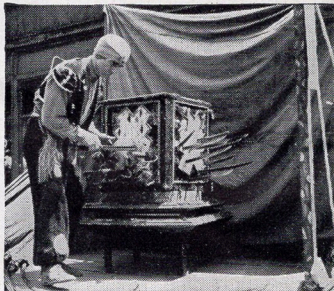
Below—A sequence series of the horror chamber trick. The girl climbs into the box.



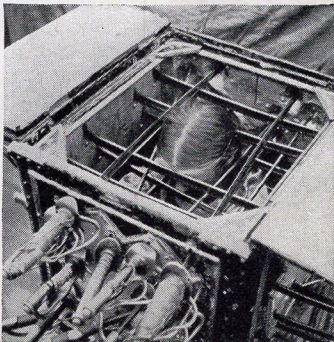
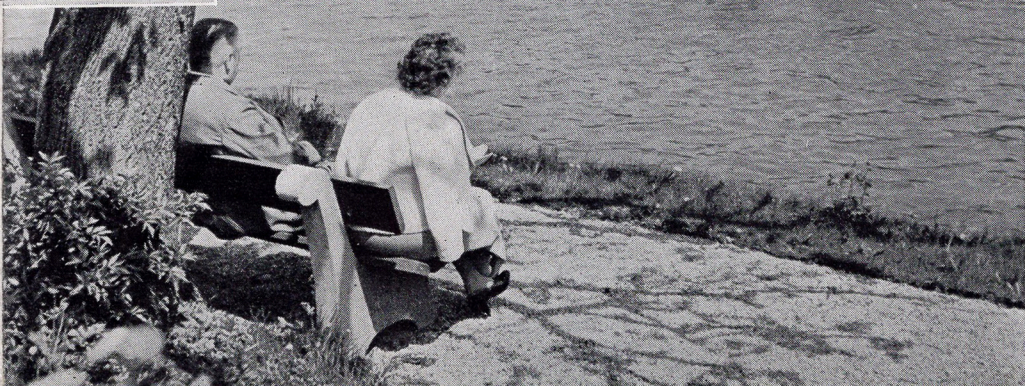
The box is closed and the fun is about to start.



Here is the horror of it—swords are run through the box.



Here is the trick of it. The young lady isn't touched. Such series are easy with a Korelle.

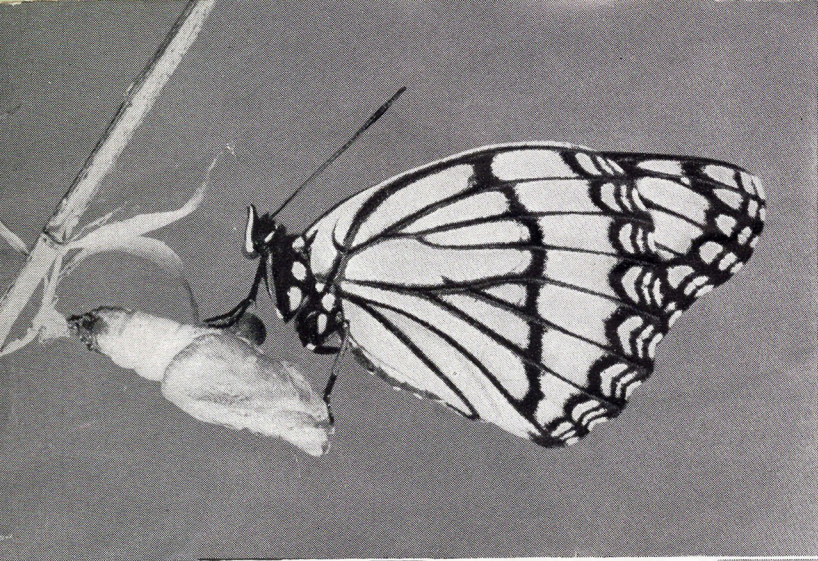


GOOD PICTURES

COME EASY

WITH A

KORELLE-REFLEX



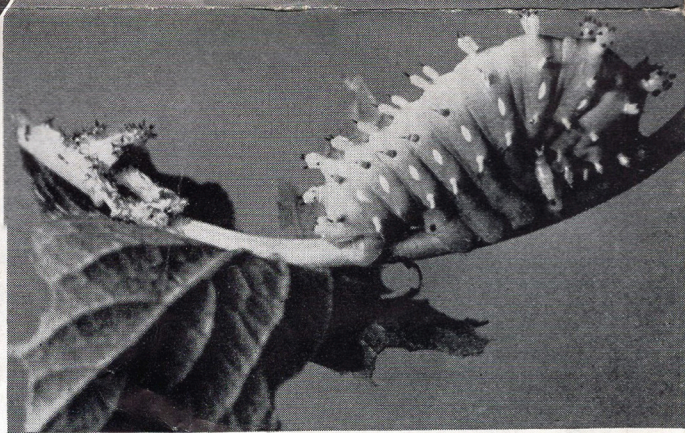
Viceroy Butterfly
Korelle-Reflexed with a
1½ in. extension
tube. A fine
specimen.



Portrait Subjects like this are made to order for the Korelle-Reflex. Visual focusing and high speed interchangeable lenses provide every requirement for perfect portraiture.



Garter
Snake, taken
with a Korelle
Reflex using a 3
in. extension tube.



Cecropia Larvae—made with the standard Korelle lens mounted on 1½ inch extension tube. A fine example of macrography.



Above—Even mail boxes can be picturesque with the right cloud background. Red filter.

Below—A typical Korelle Candid shot.



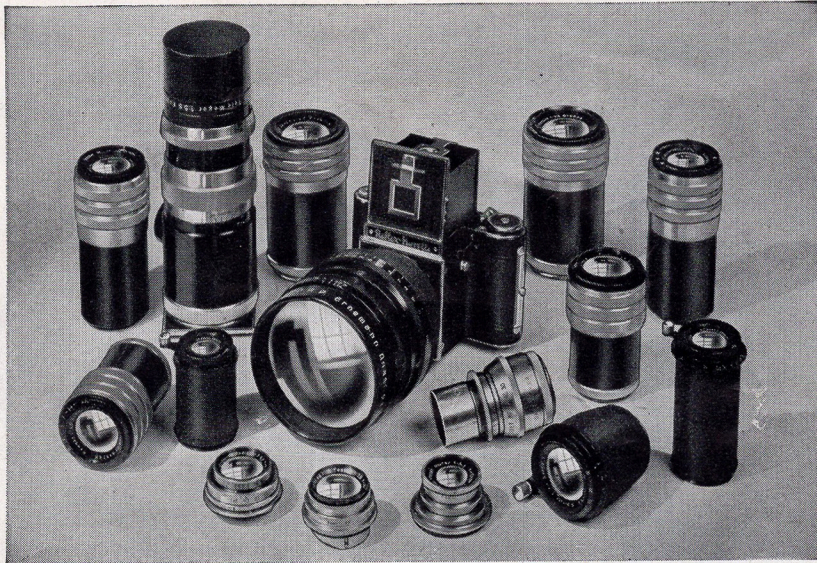
Right—impromptu portrait of a type now becoming so popular.



Young China—a posed portrait typifying the spirit of China—won a popular contest prize.



TELEPHOTO LENSES for KORELLE REFLEX



INTERCHANGEABLE ON ALL KORELLE REFLEX CAMERAS

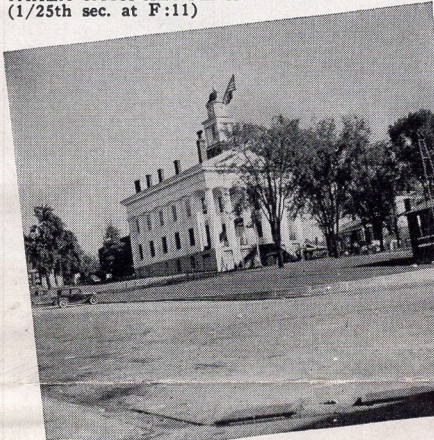
Notice the 3 snaps below, made with a Korelle Reflex fitted with 3 lenses of different focal length, all taken from the same camera position. The longer focal length telephoto lenses make them ideal for all candid and long distant work.

You'll find a "focal length" listed below for your purpose—portraiture . . . pictorial . . . newspaper . . . sports . . . candid . . . commercial, etc.

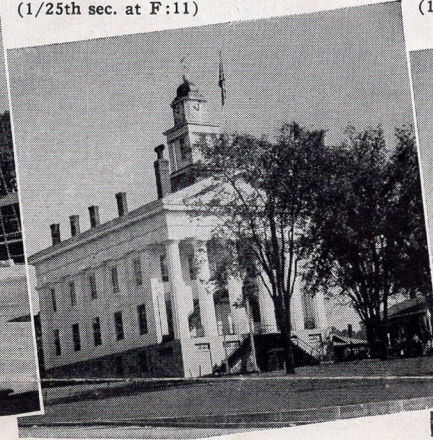
4 3/4 in. F:2.7 Carl Zeiss Tessar*	\$110.00
5 1/4 in. F:4.5 Imported Anastigmat	49.50
4 3/4 in. F:3.5 Laack Anastigmat	60.00
5 inch F:6.8 Goerz Dagor	65.00
5 1/4 in. F:2.0 Cooke Anastigmat	325.00
5 1/4 in. F:4.5 Carl Zeiss Tessar	90.00
6 inch F:4.5 Carl Zeiss Tessar	90.00
6 inch F:2.7 Ernemann*	124.50
6 inch F:6.8 Goerz (Berlin) Dagor	75.00
6 inch F:4.5 Dallmeyer Telephoto	90.00
6 1/2 in. F:2.7 Carl Zeiss Tessar*	140.00
6 1/2 in. F:4.5 Carl Zeiss Tessar	95.00
6 1/2 in. F:1.8 Ernemann Anastigmat*	197.50
7 1/8 in. F:6.3 Goerz (Berlin) Dogmar*	69.50
10 3/4 in. F:6.3 Laack Tele-Anastigmat*	90.00
10 in. F:6.8 Carl Zeiss Tele-Tessar	130.00
9 inch F:5.6 Dallmeyer Telephoto	120.00
12 in. F:5.5 Hugo Meyer Telephoto*	140.00

* Requires special fitting—send camera.

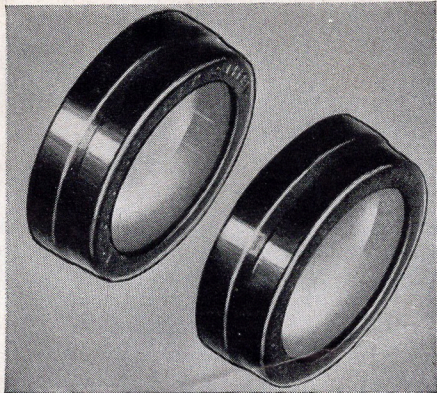
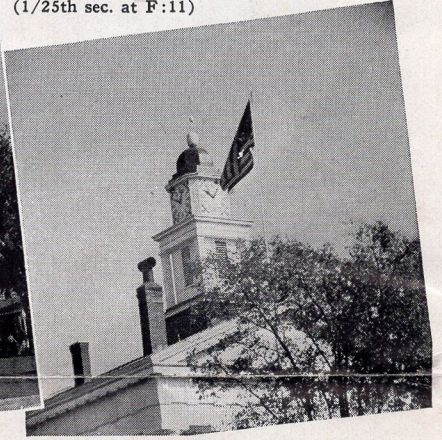
TAKEN WITH REGULAR 3" LENS
(1/25th sec. at F:11)



TAKEN WITH 5 1/4 INCH LENS
(1/25th sec. at F:11)



TAKEN WITH 9 INCH LENS
(1/25th sec. at F:11)

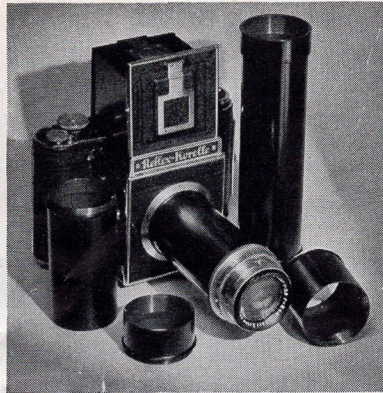


Color Filters

Ideal, slip-on type, with uniform spectral cut-off. Can be used with sunshade. 37mm. size in Yellow, Green, Red or Haze. They provide a professional touch to your pictures. Each \$3.75

Front Lenses

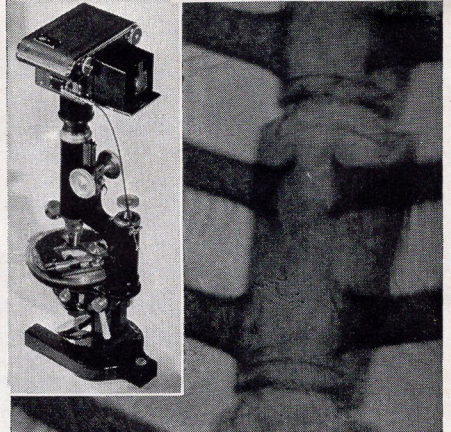
PROXAR TYPE—shortens focal length of your camera lens for close-ups or wide angle effects. Can be used with Ideal filters as listed at left 37mm. (1 1/8") size. Strengths: 1X, 2X or 4X. Each \$3.75



Lens Extension Tubes

Provide a means of extending the lens for close-up work—enabling you to photograph small objects larger than actual size. Tubes may be threaded together to secure even greater length. Of fine instrument brass, matt black finish.

3/4" each . . \$3.50 | 3" each . . \$4.00
1 1/2" each . . 3.50 | 8" each . . 8.00



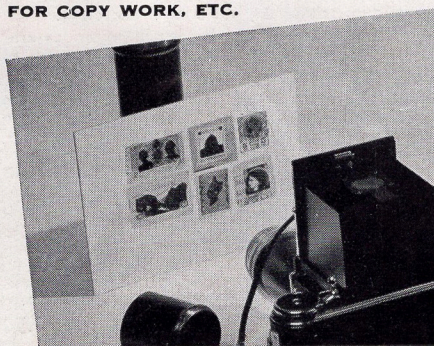
ANTENNAE MAGNIFIED 500 D. MICROSCOPE ADAPTER

A special coupling unit for mounting the Korelle Reflex on a microscope—designed to maintain proper optical axis, adapts the camera to the most exacting types of micrographic work. Widely used by scientists and laboratory research workers. Illustration above shows camera mounted on a standard microscope, and the reproduction shows a small section of a butterfly antennae greatly magnified. Amateur photographers who have a microscope available will find many new photographic adventures awaiting them in a fascinating branch of work. The marvels of nature, too small to be seen and appreciated with the human eye, can be brought up to immense proportions on the Korelle negative—and to even greater size when prints are made by projection. Specify diameter of microscope tube when ordering. PRICE EACH \$7.50

ILLUSTRATION at extreme left shows use of extension tube in fine copy work. Makes possible reproduction in actual size or larger than actual size.

ILLUSTRATION at left shows practical application of extender tube in finger print photography. Extension tubes may be used in all cases where a large image of a small object is desired.

FOR COPY WORK, ETC.



FINGER PRINT WORK

