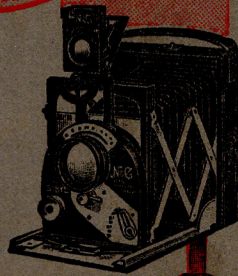


N. G.

C
A
M
E
R
A
S

AND

PHOTOGRAPHIC APPARATUS



ESTABLISHED IN 1893.



NEWMAN & GUARDIA Ltd.

MANUFACTURERS OF

Cameras

and

Photographic Apparatus

Celebrated for Forty Years
for the Highest Grade
Apparatus of Precision and
Accuracy.

Offices and Showrooms :

63, NEWMAN STREET,
Oxford Street, LONDON, W. 1.

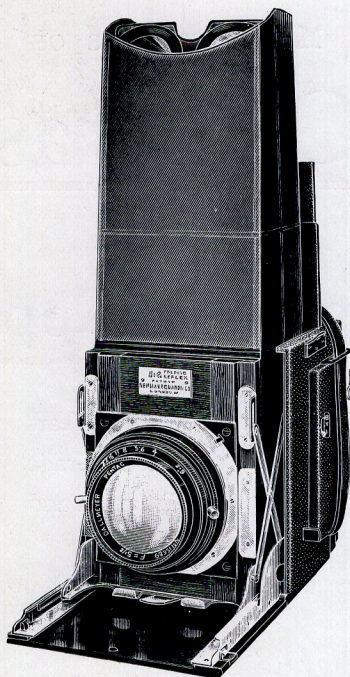
TELEPHONE :
MUSEUM 1081

TELEGRAPHIC ADDRESS :
GONIOMETER, RATH.
LONDON.



SPECIAL MODEL
PATENT
FOLDING REFLEX CAMERA

The most compact and efficient Folding Reflex Camera procurable, fitted with Large Aperture Lenses.



This, our latest model, fitted with lenses of F/2.9 and F/3.5 aperture, opens up fresh fields for the Reflex worker, rendering it easy to photograph subjects that were more or less difficult to obtain before the introduction of these lenses.

Studies of children can be taken indoors, and it is the ideal camera for animal and bird photography at the Zoo, or on those occasions when owing to the lighting conditions, work with a lens of smaller aperture would be impossible.

If convenient call and inspect this model at our showrooms.

== "N & G" ==

PATENT
FOLDING
REFLEX
CAMERA.

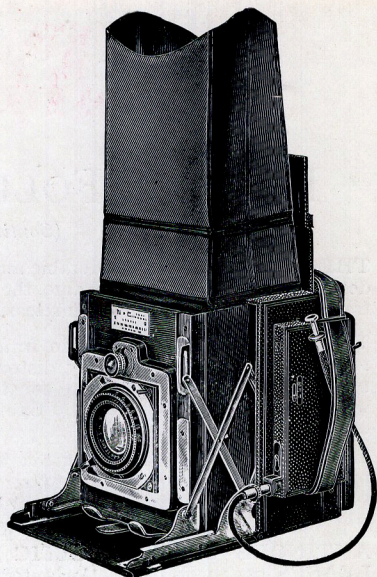
Manufactured in Two Models—

SPECIAL FOR LARGE
APERTURE LENSES.

STANDARD for F/4.5 LENSES

And in One Size only,
namely—

$3\frac{1}{2} \times 2\frac{1}{2}$ inches, or $6\frac{1}{2} \times 9$ c.m.



STANDARD MODEL.

The Standard model was placed upon the market in the Spring of 1921, in response to the demand which we felt existed for a really high-grade folding reflex, and is fitted with F/4.5 lenses only. The Special model will meet the requirements of those whose work necessitates the use of lenses of larger aperture, and the lenses fitted are the F/2.9 Ross Xpres of $5\frac{5}{8}$ in. focus, the F/2.9 Dallmeyer Pentac of $5\frac{1}{2}$ in. focus, the F/3.5 Ross Xpres of $5\frac{3}{4}$ in. focus, and the F/3.5 Dallmeyer Dalmac of 6 in. focus.

We have had the pleasure of supplying large numbers of these cameras, which are being used in all parts of the world with entire satisfaction; the construction being of metal almost throughout, which is treated with a special protective coating before leather covering, rendering them suitable for use in the most trying climates.

From the start, we have made compactness, combined with rigidity and simplicity, the main objects of design. The result is a Camera which possesses every necessary movement for the production of the highest class of work, yet meets the requirements of the professional or press photographer equally with those of the amateur who is anxious to obtain the finest results without undue complication.

The specification given below applies generally to both models, though in the case of the Special model the larger dimensions of the lenses fitted require certain modifications as stated. We shall be pleased to supply further information as to any detail upon receipt of enquiry.

CLOSED.—The Camera is entirely self-contained with no projections, the lens being properly protected from damage.

OPEN, it is in every way as rigid as a box form reflex. Single extension only is provided. **FOCUSING** is done by means of a focussing mount fitted to lens, every lens supplied being so fitted.

SHUTTER.—This is of entirely "N & G" design, and is of the self-capping quick wind, focal plane type. The instantaneous speeds given are $1/10$, $1/20$, $1/30$, $1/50$, $1/100$, $1/200$, $1/400$, and $1/800$ th of a second. Time and bulb movements are also provided.

There is **ONE SPRING TENSION ONLY** for all speeds, variation of these being obtained by merely setting the speed indicator against the desired figure, all speeds being clearly engraved upon indicator plate.



PATENT FOLDING REFLEX

(Continued).

THE MIRROR.—A considerable amount of care has been devoted to the design for mounting mirror frame, the whole unit being extremely light and free from jar or vibration when releasing.

The mirror itself is mounted in frame by means of THREE POINT SUSPENSION, totally avoiding any distortion of thin plate glass used. All movement catches and stops are constructed of the finest steel to eliminate wear, thus the accuracy of the Camera remains unimpaired after years of hard work.

THE RELEASE.—This is fitted to left side of Camera, leaving right hand free for focussing. It is extremely delicate, yet positive, and pressure is applied in a direction towards the body, avoiding all movement when making exposure.

ANTINOUS OR PNEUMATIC RELEASES can be fitted. An automatic time valve can also be supplied for use with the Pneumatic Release, giving slow speeds from $\frac{1}{4}$ to 3 seconds.

THE REVOLVING BACK is mounted upon Light-Trapped Metal flange, and is adapted to take either single metal dark slides, "N & G" double metal book-form slides, "N & G" film pack adapter, Graflex roll holder, or "N & G" changing boxes; practically any make of slide can be adapted to order.

FULL RISING FRONT, also a certain amount of falling front is provided in the Standard model, but in the Special model a rising front of approximately $\frac{1}{2}$ in. only can be obtained, with no falling front.

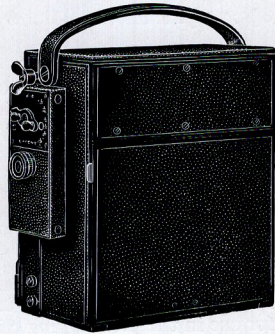
HORIZONTAL SWING FRONT, actuated by self-centring worm screw is a valuable feature fitted to the Standard model—but cannot be fitted to Special model.

LENSES.—Only the highest grade BRITISH lenses are fitted, of F/4.5 aperture and 5 $\frac{1}{4}$ in. focal length to the Standard model, and F/2.9 and F/3.5 to the Special model. These are quickly interchangeable on both models with TELE-PHOTO LENSES of the fixed focus, large aperture type, such as the Ross F/5.5 "Teleros" and Dallmeyer F/5.6 "Dallon," by means of the "N & G" QUICK CHANGE, BAYONET FLANGE.

LENS MOUNTING is a feature which receives the greatest care, and all lenses undergo thorough testing before being passed as suitable for fitting to an "N & G" Camera.

MAGNIFIER LENSES are fitted to hood to assist in focussing, and these fold inside the hood when the Camera is closed; special lenses to suit any sight can be fitted to order.

The Camera is provided with a long flexible strap for carrying, the thumb of left hand is inserted through the end of this strap when holding Camera ready for exposure. This gives a safe and convenient hold, and greatly assists in obtaining steadiness when exposing.



CAMERA CLOSED.



PATENT FOLDING REFLEX

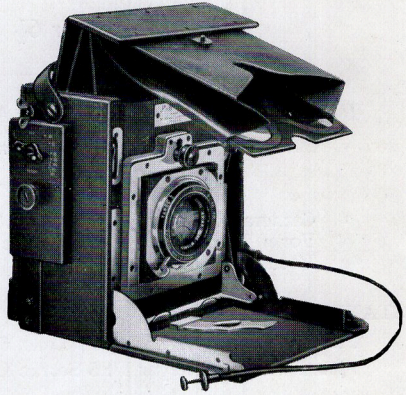
(Continued)

A TRIPOD BUSH is provided for stand work.

CAMERA IS OPENED by dropping the tail-board, pulling out the front to locked position, and setting the top ground glass focussing screen, this last operation automatically sets the mirror in position ready for focussing. The shutter speed is set, shutter wound, and Camera is then ready for exposure.

TO CLOSE the CAMERA is even more simple; merely depressing a spring catch on tail-board causes the top ground glass screen to fall parallel to Camera back, carrying the mirror with it.

As the front slides back to the closed position, the focussing hood folds down over lens (as shown in illustration herewith). The tail-board is then closed, and is locked to upper part of hood by a spring catch.



CAMERA BEING CLOSED.

WEIGHT.—The Standard model weighs only 3 lbs. 12 ozs., complete with lens in focussing jacket.

The Special model weighs 4 lbs. 8 ozs., complete with lens in focussing jacket.

We have been enabled to achieve this extraordinary result by the use of the new alloy "Duralumin," wherever possible. This metal is extremely light, yet far stronger and more rigid than aluminium, and is **ABSOLUTELY CLIMATE PROOF** in any part of the world.

DIMENSIONS.—The extreme compactness of Camera may be judged from the following dimensions:—

Standard model, 5 $\frac{3}{4}$ ins. \times 3 $\frac{1}{2}$ ins. \times 6 $\frac{1}{8}$ ins.

Special model, 5 $\frac{3}{4}$ ins. \times 4 $\frac{1}{2}$ ins. \times 6 $\frac{1}{8}$ ins.

THE CAMERA is covered in best hard grain Morocco leather, the bellows and hood are in one unit, and are of the finest leather procurable.

THE ONLY WOODWORK USED is on Camera front, which is best seasoned mahogany, finished in dull black.

THE FINISH throughout is in the usual "N & G" style; to previous users of our apparatus no more need be said.

FOR PRICES of these models and sundries, see overleaf.



PATENT
**FOLDING REFLEX
 CAMERAS**

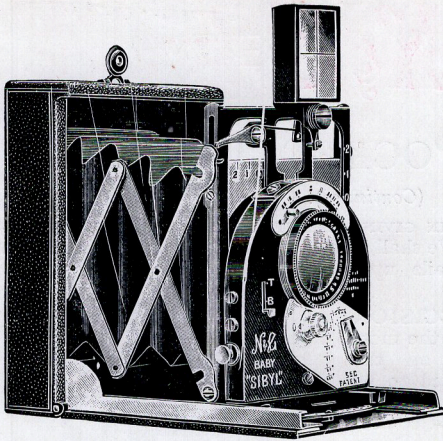
$3\frac{1}{2} \times 2\frac{1}{2}$ or $6\frac{1}{2} \times 9$ c/m.

PRICE LIST OF CAMERAS AND SUNDRIES.

All prices net.

Camera complete with 3 "N & G" Double Metal Book
 Form Dark Slides, Dark Slide Adapter, and Hooded
 Focussing Screen.

	£	s.	d.	
STANDARD MODEL.				
Fitted with Ross F4.5 Xpres Lens, $5\frac{1}{4}$ in.	47	10	0	
Fitted with Dallmeyer F4.5 Serrac Lens, $5\frac{1}{4}$ in.	47	0	0	
Dallmeyer F5.6 Dallon Telephoto Lens, 10 in. focus	15	10	0	
Ross F5.5 Teleros Lens, 11 in. focus	18	5	0	
		20		
SPECIAL MODEL.				
Fitted with Ross F2.9 Xpres Lens, $5\frac{3}{8}$ in.	57	0	0	
Fitted with Dallmeyer F2.9 Pentac Lens, $5\frac{1}{2}$ in.	56	0	0	
Fitted with Ross F3.5 Xpres Lens, $5\frac{3}{8}$ ins.	53	0	0	
Fitted with Dallmeyer F3.5 Dalmac Lens, 6 in.	51	0	0	
		20.5		
Ross F5.5 Teleros Lens, 11 in. focus	18	10	0	
Dallmeyer F5.6 Dallon Telephoto Lens, 10 in. focus	15	15	0	
<hr/>				
"N & G" Metal Double Book form Dark Slides, each	0	17	6	
Film Pack Adapter, $3\frac{1}{4} \times 2\frac{1}{4}$ in.	1	10	0	
"N & G" twelve plate Changing Box	5	5	0	
Graflex Roll Holder, $3\frac{1}{4}$ in. \times $2\frac{1}{4}$ in., adapted	5	12	0	
"N & G" Special Single Autochrome Slide	2	2	0	
Antinous Release	0	5	6	
Pneumatic Release Attachment with Time Valve	1	5	0	
"N & G" Folding Lens Hood, Standard Model	0	17	6	
"N & G" Folding Lens Hood, Special Model	1	1	0	
Filter in Holder in Pocket Case, Standard Model	0	16	6	
Filters for Special Models (To order.)				
"N & G" Patent Walking Stick Tripod	3	5	0	
Best Solid Leather Velvet Lined Cases to take Standard Model, 3 Double Dark Slides, and Film Pack Adapter				
ditto ditto Special Model	3	10	0	
		3	15	0



THE BABY "SIBYL" (HALF-SIZE).

"N & G"

**"SIBYL"
FOLDING
POCKET
CAMERAS**

Constructed in
Four Sizes.

THE BABY "SIBYL." For plates or film packs, $4\frac{1}{2} \times 6$ c.m.
ROLL FILM MODEL. Size of picture given, $2\frac{3}{8}$ in. \times $1\frac{5}{8}$ in.

THE "NEW SPECIAL." For plates, $3\frac{1}{2}$ in. \times $2\frac{1}{2}$ in., or $6\frac{1}{2} \times 9$ c.m.
" " " For film packs, $3\frac{1}{4}$ in. \times $2\frac{1}{4}$ in.
ROLL FILM MODEL. Size of picture given, $3\frac{5}{8}$ in. \times $2\frac{5}{16}$ in.

THE "SIBYL VITESSE." For plates, $3\frac{1}{2}$ in. \times $2\frac{1}{2}$ in., or $6\frac{1}{2} \times 9$ c.m.
" " " For film packs, $3\frac{1}{4}$ in. \times $2\frac{1}{4}$ in.

THE "NEW IDEAL." For plates or film packs, $4\frac{1}{4}$ in. \times $3\frac{1}{4}$ in.
ROLL FILM MODEL. Size of picture given, $4\frac{3}{8}$ in. \times 3 in.

THE "SIBYL EXCELSIOR."
ROLL FILM MODEL. $4\frac{1}{4}$ in. \times $2\frac{1}{2}$ in.

The "Sibyl" Cameras were first placed upon the market in 1906, and since that time have proved to be by far the most popular models that we have ever produced.

They are light, compact, and accurate in all movements, and are undoubtedly the ideal instruments for those who desire to produce the highest grade work, covering a wide scope, without the necessity for carrying a large and bulky camera.

They are all fitted with the "N & G" patent trellis bars to front. This invention has completely disproved the old idea that a heavy stirrup type front was necessary to obtain rigidity; a comparison of an "N & G" "Sibyl" with any other folding camera will at once prove the accuracy of this statement.

The "N & G" patent focussing movement, the "N & G" high-precision shutter, the adaptability for fitting tele-lenses, the care exercised in mounting the highest grade British lenses only, all are features which go to making the dainty little "Sibyl" Cameras what they undoubtedly are—

THE FINEST POCKET CAMERAS EVER PRODUCED.

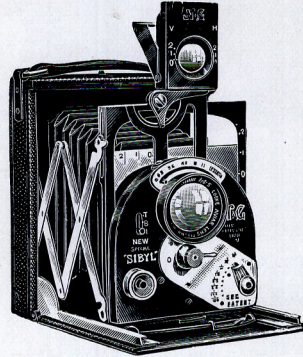


“SIBYL” POCKET CAMERAS

(Continued).

BELOW WE HAVE PLEASURE IN GIVING SPECIFICATION AND FULL PARTICULARS OF THESE MODELS. We shall be pleased to send further particulars with reference to any details upon receipt of enquiry.

THE “N & G” HIGH PRECISION SHUTTER.—This is one of the most important features found on the “Sibyl” models, and is fitted to no other Camera. The speeds are clearly engraved, and are guaranteed correct to within 10 % of scale. Every shutter is individually calibrated for each speed fraction. The range of speeds is, 1/2, 1/4, 1/8, 1/16, 1/32, 1/64, 1/100, 1/150, and 1/200th of a second on Baby “Sibyl” models, 1/2 to 1/150th (same range) on 3½ in. × 2½ in. models, and 1/2 to 1/100th on 1/4 plate models. All shutters are provided with time and bulb movements.



NEW SPECIAL “SIBYL”

THE SHUTTER on the New “Excelsior” and “Vitesse” models is of “N & G” design, embodying new principles, giving a unique range of Accurate Speeds from 2 SECONDS to 1/150th second; also positive Ball and Time movements when shutter is set at any speed.

THE SHUTTER RELEASE of all “Sibyl” Cameras is a special feature, the delicacy of this, in conjunction with the extremely smooth, silent working of shutter, enables long exposures to be given in the hand with no trace of movement. Speeds of 1/8, 1/4, and even of 1/2 second, being frequently used.

FOCUSSING.—The focussing adjustment fitted to all “Sibyl” models consists of a lever, pivoted to the sliding focussing plate, the short arm of which is coupled to the register catch attached to the tail-board. The long arm of lever describes a large arc of a circle across base of Camera front, enabling scale markings to be kept well separated. All distances are individually scribed for each Camera, and are clearly engraved in yards, the range given being from infinity to 2 yards.

A DEPTH OF FIELD SCALE is fitted to end of focussing lever (not on Baby models) which is used in conjunction with focussing scale if desired. The figures engraved upon this scale represent the Iris apertures most employed, and enable the fullest advantage to be taken of depth of focus at any lens aperture, for varying distances.

THE “N & G” DOUBLE REGISTER CATCH is a simple device to enable Camera to be fitted with changing boxes, “N & G” autochrome slides, etc., in addition to the usual metal slides, without the added complication of two focussing scales. The “Baby Sibyl,” being supplied only with double metal slides and film pack adapter of the same register, is not fitted with this device.

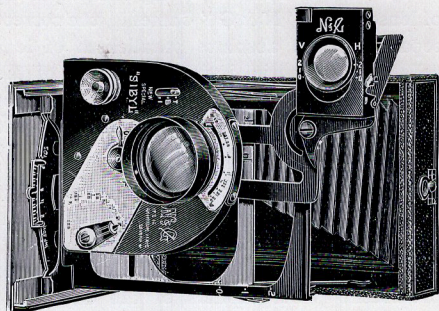
THE “N & G” PATENT FOLDING REFLECTOR FINDER is fitted to all “Sibyl” models, save only the “Baby Sibyl” plate model. This finder has a sliding lens, accurately scaled to show the exact view received by plate when rising front is used, both horizontal and vertical. It is also fitted with two levels in top, enabling lines of buildings, etc., to be kept square.



“SIBYL” POCKET CAMERAS

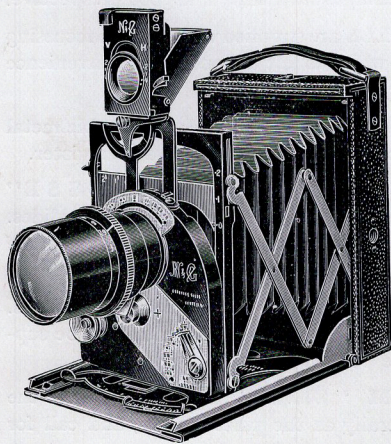
(Continued).

The “Baby Sibyl” plate model is fitted with the “N & G” self-erecting and closing direct vision finder, which also shows rising front both ways of plate. All “Sibyl” PLATE models may be fitted with this finder to order, in place of the folding reflector type. It is impossible to fit a direct vision finder to roll film models, except as a supplementary fitting, when it is attached to side of Camera, and does not then show rising front “Baby” plate models may be fitted with a supplementary folding reflector finder in the same manner, but in this case rising front is shown as in other “Sibyl” models.



SHOWING HORIZONTAL RISE,
FOLDING FINDER, AND
COLLAPSIBLE LENS HOOD.

FULL RISING FRONT, both horizontal and vertical, is provided on all models, to the extent of a quarter of the plate both ways. This is ample for the needs of both architectural and landscape work. The trellis bars are never swung sideways, obviating all strain in joints, this being, in our opinion, most important.



“SIBYL” FITTED WITH TELE-LENS.

THE “N & G” SLIDING METAL LENS HOOD is fitted to all “Sibyl” models except in the “Baby” size and “Sibyl Vitesse.” This hood slides back on lens when not required, and is valuable in shielding the lens from cross lights and reflections, greatly improving the brilliance of negatives.

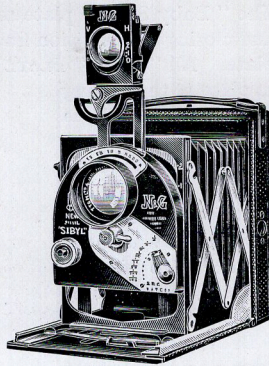


“SIBYL” POCKET CAMERAS

(Continued).

LENSES.—Only the highest grade British lenses are fitted, of F/4.5 aperture and F/3.5 aperture to “Sibyl Vitesse.” The greatest care is exercised in the fitting and mounting of lenses in all “N & G” Cameras, the correct separation and absolute parallelism of lens cells being essential if full advantage of the large aperture and high optical qualities given by these lenses is to be utilised to the full.

It is of no use to purchase an expensive lens unless these details receive careful attention and this is one of the reasons why “N & G” apparatus is the choice of the majority of the prominent photographers of the day.



SHOWING RISING FRONT MOVEMENT.

TELE-LENSES, of the Dallmeyer “Dallon” or Ross “Teleros” type, can be fitted to *all* “Sibyl” models, and are interchangeable with the normal lens.

These lenses place a new power in the hands of “Sibyl” users and greatly widen the scope of work available.

The definition at full aperture is equal to that given by the finest anastigmat and they are invaluable for distant landscapes, sporting events, etc., while for portraiture they possess the advantages of rapidity and good perspective.

THE “SIBYL” PLATE MODELS are supplied with hooded focussing screen, except the “Baby” model, which is left unhooded for convenience of use of magnifying glass.

The “Baby Sibyl” plate model is adapted to take “N & G” double metal dark slides and “N & G” film pack adapter only of the same register.

THE “NEW SPECIAL” and “SIBYL VITESSE” MODELS are supplied fitted with “N & G” double metal dark slides. The “N & G” metal film pack adapter for these models is the same register as the double dark slides.

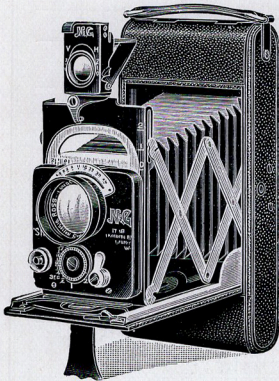
The “NEW IDEAL” model is supplied with single metal dark slides. “N & G” Changing Boxes for 12 plates, also for 24 cut films can be supplied for all plate models except the “BABY SIBYL.”

THE STANDARD ROLL FILM “SIBYL” MODELS have the same movements and fittings generally as the plate models, and call for no special description.

"N & E"

"SIBYL" POCKET CAMERAS

(Continued).



"SIBYL EXCELSIOR."

The Camera sides are constructed of the finest old seasoned mahogany to enable all fittings to be flush, otherwise their construction is identical with the plate models. They are made to take roll films only, and give extra large size pictures on the standard size film spools.

THE "SIBYL EXCELSIOR" ROLL FILM MODEL however possesses the following new and exclusive patented features:—

UNRIVALLED EASE OF LOADING.

—Spool chambers automatically lift clear of camera when back is opened. Spools are dropped in position. "No SPOOL

PINS," and return to position for use by merely closing camera back.

RELEASE CATCH for back incorporated in Winder, pulling out same and a $\frac{1}{4}$ -turn in reverse direction being all that is necessary. Snap closing is also fitted.

FLATNESS OF FILM SURFACE to a hitherto unattained degree is assured by means of special **Spring Pressure Plate** in camera back.

NOTHING WHICH A LONG EXPERIENCE CAN SUGGEST, or the best workmanship secure, has been omitted to make the "Sibyl" Cameras perfect in every detail.

They are of all metal construction, the cases being treated with a special protective coating, rendering them suitable for use in the most trying climates, before being covered in the best hard grain Morocco leather, the bellows are of the finest leather and the finish is of the best throughout.

WEIGHTS AND DIMENSIONS.

PLATE CAMERAS WITH FOCUSING SCREENS.

"Baby Sibyl," Plate, 9 ozs., $2\frac{3}{4}" \times 1\frac{3}{16}" \times 3\frac{9}{16}"$

"Baby Sibyl," Roll Film, 15 ozs., $3\frac{1}{8}" \times 1\frac{1}{4}" \times 6\frac{3}{16}"$

$3\frac{1}{2}" \times 2\frac{1}{2}"$ "New Special," Plate, 20 ozs., $3\frac{11}{16}" \times 1\frac{3}{4}" \times 5\frac{1}{8}"$

$3\frac{1}{4}" \times 2\frac{1}{4}"$ "New Special," Roll Film, 1 lb. 13 ozs., $4\frac{1}{8}" \times 1\frac{1}{2}" \times 8"$

$3\frac{1}{2}" \times 2\frac{1}{2}"$ "Sibyl Vitesse," Plate, 1 lb. 6 ozs., $3\frac{11}{16}" \times 2\frac{1}{16}" \times 5\frac{1}{4}"$

$\frac{1}{4}$ plate "New Ideal," Plate, 1 lb. 11 ozs., $4\frac{5}{16}" \times 1\frac{13}{16}" \times 5\frac{7}{8}"$

$\frac{1}{4}$ plate "New Ideal," Roll Film, 2 lb. 4 ozs., $4\frac{3}{4}" \times 1\frac{5}{8}" \times 8\frac{3}{4}"$

$4\frac{1}{4}" \times 2\frac{1}{2}"$ "Sibyl Excelsior," Roll Film, 2 lb. 2 ozs. $4\frac{1}{4}" \times 1\frac{5}{8}" \times 8\frac{3}{4}"$

For Prices of these Models and Sundries—See Overleaf.

"SIBYL" CAMERAS.

PLATE MODELS, complete with 3 "N & G" Metal Double Dark Slides and Focussing Screen.

Lens.	Baby 4½ × 6 c/m	New Special 3½ × 2½ or 6½ × 9 c/m	New Ideal ¼-plate or 4¼ × 3¼
Ross F4.5 Xpres	£19 5 0	£23 0 0	Double Dark Slides cannot be supplied
T.T. and H. F4.5 SIBYL Aviar	19 5 0	—	
Dallmeyer F4.5 Serrac	18 10 0	22 5 0	
Wray F4.5 Lustrar	17 10 0	21 5 0	

The New "Sibyl Vitesse." 3½ × 2½ in. or 6½ × 9 c/m.

Ross F3.5 Xpres Lens	£30 0 0
Dallmeyer F3.5 Dalmac Lens	28 10 0

PLATE MODELS, complete with 6 Single Metal Dark Slides, instead of Double Dark Slides.

Lens.	Single Dark Slides	£21 10 0	£25 0 0
Ross F4.5 Xpres	cannot be supplied	—	25 0 0
T.T. and H. F4.5 SIBYL Aviar	cannot be supplied	20 10 0	24 5 0
Dallmeyer F4.5 Serrac	cannot be supplied	19 10 0	23 5 0
Wray F4.5 Lustrar	cannot be supplied	—	—

ROLL FILM MODELS.

The New "Sibyl Excelstor." 4¼ × 2½

Ross F4.5 Xpres	£29 10 0
T.T. and H. F4.5 SIBYL Aviar	29 10 0
Dallmeyer F4.5 Serrac	28 15 0

Lens.	Baby 4½ × 6 c/m.	New Special 3½ × 2½ or 6½ × 9 c/m	New Ideal ¼-plate or 4¼ × 3¼
Ross F4.5 Xpres	£19 15 0	£23 0 0	£26 0 0
T.T. and H. F4.5 SIBYL Aviar	19 15 0	—	26 0 0
Dallmeyer F4.5 Serrac	19 0 0	22 5 0	25 5 0
Wray F4.5 Lustrar	18 0 0	21 5 0	24 5 0

TELE-PHOTO LENSES for use with "Sibyl" Cameras.

Dallmeyer F6.5 Dallon	(5¼ in.) £5 10 0	(9 in.) £8 12 6	(10½ in.) £10 10 0
Ross F5.5 Teleros	(6¼ in.) 11 10 0	(9 in.) 13 8 0	(11 in.) 16 3 0

Prices of "Sibyl" Sundries.

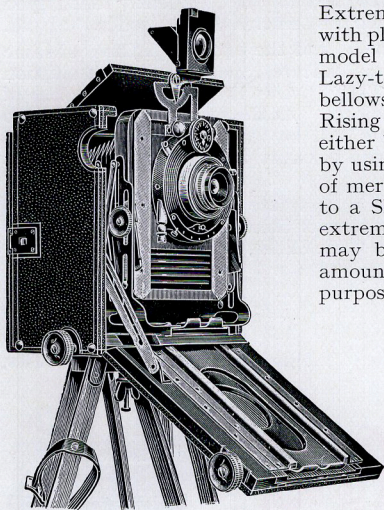
Description	4½ × 6 c/m	6½ × 9 c/m and 3½ × 2½	¼-plate 4¼ × 3¼
New "N & G" Double Book-Form Metal Dark Slide, each	£0 15 0	£0 17 6	—
Six Single Slides (numbered)	—	0 18 0	£0 18 0
"N & G" Film Pack Adapter	1 1 0	1 10 0	2 0 0
"N & G" Changing Boxes (12 plates)	—	5 0 0	5 5 0
Graflex Roll Holder	—	5 12 0	—
Hooded Focussing Screen	—	0 11 6	0 13 6
"N & G" Antinous Release	0 5 0	0 7 6	0 7 6
Light Filter in Holder in Pocket Case	0 15 6	0 16 6	0 17 6
"Sibyl" Tripod Boards	0 18 6	0 18 6	0 18 6
"N & G" Folding Lens Hood	0 17 6	0 17 6	0 17 6
"N & G" Rising Front, Folding Reflector Finder in Pocket Case, including fitting Supplementary Direct Vision Finder, fitted side of Camera, from	1 12 6	1 12 6	1 12 6
"N & G" Autochrome Slide	0 17 6	0 17 6	0 17 6
"N & G" Leather Hood for Folding Reflector Finder	—	2 2 0	2 2 0
Best Velvet Lined Pigskin or Morocco Leather Case for Roll Film Camera	—	0 4 6	0 4 6
Best Velvet Lined Brown or Black Hide Case for Camera and Slides	1 7 0	1 12 0	1 17 0
Ditto, for Camera, Slides, and Film Pack Adapter	1 10 0	2 0 0	2 5 0
Ditto, for Camera and Film Pack Adapter only	1 15 0	2 6 0	2 12 0
Ditto, for Camera and Film Pack Adapter only	1 1 0	1 10 0	1 12 6



“TRELLIS” CAMERA

¼ PLATE SIZE ONLY.

This apparatus is of the Hand or Stand type, designed to give the fullest range of movements likely to be required for any description of photography. It is light, conveniently compact, and the latitude of its movements will accommodate a whole series of Lenses, from that of the shortest focal length made (for architectural subjects) up to the lens of about 15 inch focus. Large aperture Lenses are also equally readily adapted, such as the F/3.5 and F/4.5 Ross Xpres, the F/4.5 Dallmeyer Serrac, the F/4.5 Cooke Aviar, etc.



SHOWING CAMERA OPENED FOR
WIDE ANGLE WORK.

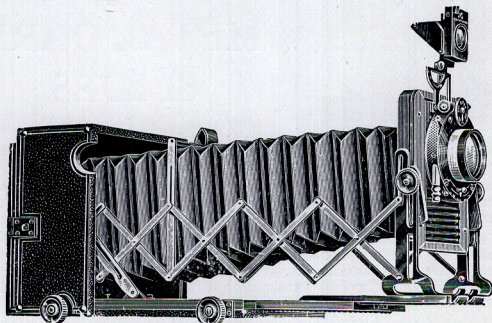
Extreme rigidity and parallelism of front with plate are again assured to users of this model by means of the “Trellis” or Lazy-tongs supports, and this at any bellows extension. The maximum of Rising Front necessary is also obtainable, either by raising the Front as a whole, or by using the quick and smooth movement of merely raising the Lens, which is fixed to a Sliding Friction Panel. In cases of extreme necessity, also, both movements may be requisitioned, and an abnormal amount of Rise obtained. For all general purposes however, the ever-ready Sliding Adjustment will be found to be ample. Where a wide-angle Lens is being employed also, it will be found of immense advantage, because at this extension the fold of the bellows do not permit of the Front as a whole being raised.

The form of revolving back employed is the same as that fitted to our Reflex Cameras, which a long experience has proved to be

entirely satisfactory, and we can guarantee to be absolutely light-tight and of smooth action. It locks itself into the horizontal or vertical position by means of Spring Bolts.

Central Swing Front movement is given, which automatically re-centres itself into a position of parallelism with plate.

The “Trellis” Camera is eminently suitable for Autochrome work of any description, and, fitted with our Special Autochrome slide, it has no equal for this purpose.



SHOWING DOUBLE EXTENSION.



“TRELLIS” CAMERA

(Continued).

The Camera is also made to take Single or Double Dark Slides, Film Pack Adapter, etc.

The Patent “N & G” Folding Reflector Finder is fitted, showing the actual rise of Front given on plate.

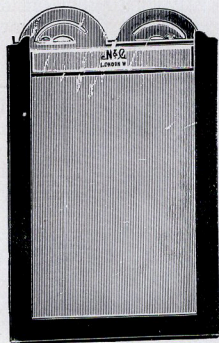
Customers’ own Lenses and Shutters can be fitted, or any suitable Lens and Shutter can be supplied and fitted to order.

All scale markings are accurately engraved according to test distance readings taken through lens to be fitted, and may be confidently relied upon when not using focussing screen, or when the Camera is being used in the hand.

The extension available on this Camera, and the extreme rigidity of same as a whole, at all positions, are its special features, and we have no hesitation in confidently recommending it as THE CAMERA for the best class of work among a very wide range of subjects. At the same time, although so serviceably equipped, its movements will be found entirely simple and direct in manipulation and such as can be easily mastered by all who elect to employ it.

Price of “N & G” “Trellis” Camera, complete with three Double Dark Slides, but without Lens or Shutter, $\frac{1}{4}$ -plate Camera, complete with three Double Dark Slides, fitted with “N & G” “Excelsior” Shutter and No. 7 Ross Combinable Lens—6” and $10\frac{1}{4}$ ” foci	£20 0 0
Film Pack Adapter	2 10 0
Extra Double Dark Slides	1 12 6

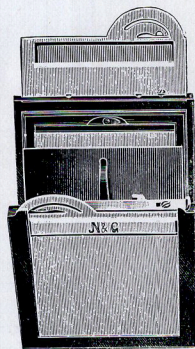
Prices of other Lenses and Shutters, “Trellis” Sundries, Leather Cases, etc., on application.



CLOSED.

“N & G”

DOUBLE
BOOK-FORM
METAL DARK
SLIDES.



OPEN.

The most perfect metal dark slide ever produced. It is of our own pattern and manufacture; in design it is similar to the universally approved wooden book-form slide, over which it offers unique advantages in compactness, durability, and ready access. It is a bare fraction thicker than two single metal slides.

The slide opens by side pressure on sliding bar at top, and snap-locks itself closed. Plates are loaded by dropping into holder frames, hand contact with sensitive surface being entirely avoided and perfect registration is assured. These slides have lately been further improved by the fitting of the “N & G” velvet-lined spring metal cut-off, overcoming all chance of light leakage at this important point due to worn or flattened plush.

Made in two sizes only, namely, $3\frac{1}{2}$ in. \times $2\frac{1}{2}$ in. or $6\frac{1}{2}$ \times 9 c.m. Price, 17/6 each.
 $2\frac{1}{8}$ in. \times $1\frac{1}{4}$ in. or $4\frac{1}{2}$ \times 6 c.m. Price, 15/- each.

“N & G”

PATENT
ADJUSTABLE
WALKING STICK
TRIPOD.

This tripod has many unique and useful features, it is light, and of a portable and handy design, is of attractive appearance, and is beautifully finished in polished wood and non-rustable metal, except only the shoe cap, which is of steel to provide durability. The accompanying illustrations show clearly the design and construction of this stand, also its adjustability for varying heights and uneven ground.

In attempting to meet the requirements for a stand of this type, previous designs have failed by endeavouring to provide for lightness only;

it is an essential for any tripod that it must not be too flimsy in the proportions of its supporting members.

In designing our stand, this fact has been kept well in mind, and it is of the lightest type compatible with reasonable strength possible to obtain.

THE “N & G” WALKING STICK TRIPOD consists of

two tripod erections, the upper one sliding inside the centres of the lower supporting sections. The legs of the upper section are securely clamped in any desired position by means of expanding clips, extra rigidity to top is provided by a “Duralumin” tube running from tripod top down through the head of lower section; when this is clamped by locking finger-screw, the whole tripod is as one piece, and may be moved bodily with legs prevented from moving. This is a most valuable feature when doing interior work on a smooth floor, or for home portrait work with a reflex camera.

THE “N & G” PATENT TRIPOD SCREW is another important feature to be found only on this stand.

To affix the Camera is the work of a moment only; remove screw from tripod top (it is held in place by a light spring clip) screw same firmly into Camera bush, insert head of tripod screw in tripod top, and push wedge clamp right home. Camera is then securely held.

THE HORN CROOK HANDLE is of handsome appearance, and is of sufficient size to hang comfortably from the arm when carrying.

THE EXPANDING HEAD provides useful additional support, and is of exceptionally neat design.

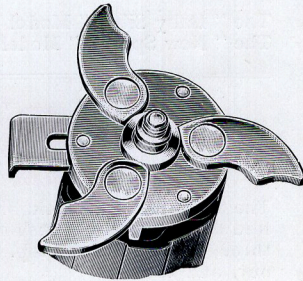
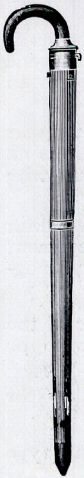
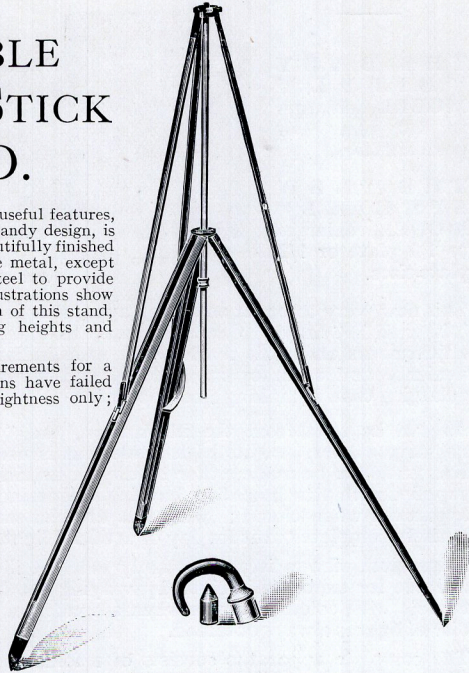
The stand gives reasonable extension for use with light Cameras of the “Sibyl” type, yet is amply rigid for use with a reflex camera at the height most used with this type of instrument.

It is particularly recommended in conjunction with our Folding Reflex Camera, being ideal for this purpose.

THE OVERALL DIMENSIONS, including handle, when closed are: length 36 in., diameter at top, 1 13/16th in., tapering to 1 1/4 in. at bottom.

WEIGHT, with horn crook handle is 1 lb. 12 ozs.

PRICE, £3 5 0



EXPANDING HEAD.



TRI-UNIPOD

(Patented).

The device meets a want—long felt by the serious hand camera worker, and is a practical solution of the difficulty of giving long automatic exposures without being burdened with a cumbersome tripod.

The **TRI-UNIPOD** is primarily a neat and practical Walking Stick, which in a few seconds can be converted into a camera support, and when used in conjunction with the operator's body, forms an ideal tripod, with which automatic exposures up to **ONE** Second can be given with certainty, thus making it possible to use light filters on subjects which would otherwise necessitate fitting the camera to a stand.

The method of use is clearly shown in illustration, particular attention being drawn to the ingenious camera support or platform, which is normally concealed in body of stick.

In construction the Tri-Unipod follows "N & G" methods throughout, embodying all that is essential without delicate or easily deranged mechanism.



In addition to sliding extension being used as illustrated it forms an excellent staff, the use of which will be greatly appreciated when climbing, or on long walks.

With the exception of the

handle, which is horn, and the extension piece which is hard wood, the TRI-UNIPOD is made of duralumin, so giving the maximum strength, with the minimum of weight. The cross struts of platform lock into position when extended, and form a rigid base for camera.



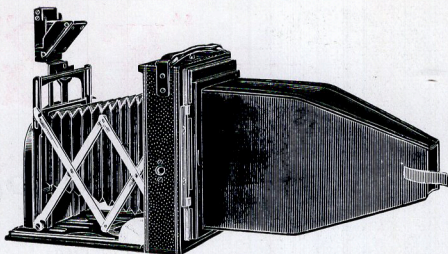
Weight, 20 ozs. Height as Walking Stick, 34 inches.

Height when extended, 48½ inches.

Price £2 2 0

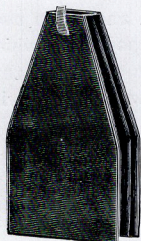
"N & E"

COMPOSING AND FOCUSSING HOOD.



SHOWING COMPOSING AND FOCUSSING HOOD
IN POSITION ON CAMERA.

This is a simple and convenient invention which is most effective, and can be carried in the breast pocket.



HOOD COLLAPSED
FOR POCKET.

As shown in the illustrations, it entirely does away with the need of a focussing cloth, and is for use with Cameras of the folding type. It can be supplied either with or without a magnifying lens, and by its employment, accurate focussing with a hand Camera becomes as certain as when using a reflex type of instrument.

The Hood was designed originally for use with our plate model "Sibyl" Cameras. These are fitted with a short hood to focussing screen, over which the composing hood fits, the ground glass then being completely shaded from outside light.

It is, however, suitable for use with practically all hand Cameras fitted with short, stiff, hood to focussing screen.

The process of focussing by this means is a far more comfortable proceeding than by the old method, and nobody should be without one of these inexpensive attachments.

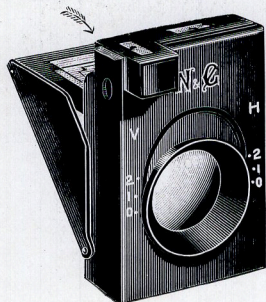
Hoods for focussing screens not of our standard pattern, can be made to order at slight extra cost. Length, breadth, and height of short hood on focussing screen should be given when ordering, or better still, the screen should be sent to us to ensure perfect fitting. Price, for use with either the $3\frac{1}{2}$ in. \times $2\frac{1}{2}$ in. or $1/4$ plate "Sibyl" Cameras :

With Magnifier Lens, 10/6

Without Lens, 7/6

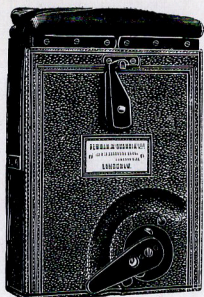
"N & E"

FOLDING REFLECTOR FINDER.



This finder can be fitted to many types of folding Cameras. By depressing the ground glass the finder will fold into very compact space. It is fitted on bridges, one on top, and one at side of Camera. It is detachable for use on both, and is supplied complete in leather-covered pocket case. It has a sliding lens accurately marked, horizontally and vertically, to show the exact amount of rising front necessary, and as will be obtained on plate by raising lens correspondingly, the Camera front being scaled to correspond with finder.

Price (complete in best leather pocket case), from **32/6**, including fitting to Camera.



“N & G”

CHANGING BOXES

Are made for all “N & G” Cameras (except “Baby Sibyl”), and can be fitted to many other makes as well.

These boxes are made in several fittings and sizes. They are constructed of the best old seasoned mahogany, covered in hard grain Morocco leather. All joints are tongued and grooved, the boxes being very strong and suited to every climate.

Anything of a complex nature in design has been avoided, with the result that the boxes are thoroughly dependable and satisfactory.

This is undoubtedly the most convenient and expeditious method of changing at present in use. The plate is raised from the back of box by lever, into leather bag at top, lifted over to front of box, and pressed down into register ready for exposure.

PRICES.

	£	s.	d.
12 Plate Box, $3\frac{1}{2} \times 2\frac{1}{2}$ ins., adapted for “Sibyl” Camera	5	0	0
12 Plate Box, $3\frac{1}{2} \times 2\frac{1}{2}$ ins., adapted for Folding Reflex ...	5	5	0
12 Plate Box, $\frac{1}{4}$ Plate, adapted for $\frac{1}{4}$ Plate “Sibyl” ...	5	5	0

Other sizes and fittings in stock, prices on receipt of particulars.

“N & G”

LEATHER CASES.

A good Camera deserves a good leather case. We have a name for, and specialise in, best quality, velvet lined, leather cases, in Brown or Black hide, Pigskin or Hard Grain Morocco. We shall be pleased to plan and supply special leather cases to take any Camera, or Camera set.

We stock a full range of Brown Hide velvet lined cases for all Cameras listed, and shall be pleased to quote for similar cases in Pigskin or Morocco on request.





REGISTERED DESIGN.

THE
"N & G"
 FOLDING
 LENS
 HOOD.



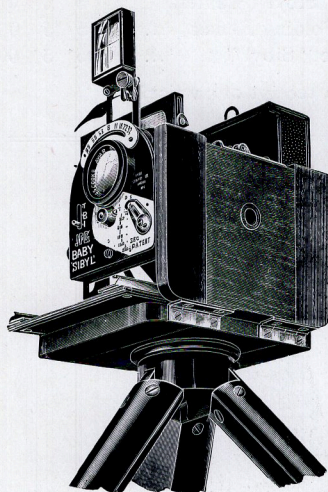
CLOSED.

Should be used by every Photographer

Ensures brilliant negatives with no signs of flare. Compact and efficient and fitted to customers' own lenses without extra charge. "N & G" workmanship and material throughout. Hoods can be fitted with metal adapter for light filters at an extra charge of 7/6

PRICES.

	£	s.	d.
Made up to diameter of any lens up to 1½ in.	0	17	6
Made up to diameter of any Lens from 1½ ins., price according to size From	1	1	0



SHOWING METHOD OF FITTING TRIPOD BOARD.

TRIPOD BOARDS

FOR

"SIBYL" POCKET CAMERAS.

The accompanying illustration shows method of use of this fitting. The light folding pocket "Sibyl" Camera becomes as solid and rigid for use on stand, with this attachment fitted, as any heavy built, or box form Camera. The "Sibyl" can be safely and satisfactorily used on any tripod in this way without fear of strain to the camera case. The tripod board has full size bushes, ensuring a safe hold on stand; it folds flat, and can easily be carried in the pocket or Camera case.

Strongly made in our factory in best seasoned mahogany, stained black.

Price, for all current "Sibyl" Models, 18/6 each.

LIGHT FILTERS.

A full range of Wratten "K" Filters kept in stock for all "Sibyl" and Folding Reflex models; for prices of these, see list of sundries for these models. We can also supply all Ilford filters for all models to order; prices as Wratten filters in list.

We shall be pleased to supply any Wratten, Ilford, or other makes of light filters to order. Prices upon application and receipt of particulars.

“N & G”

We wish to inform all “N & G” Clients that we are extremely pleased at all times to offer independent expert opinion on every type of photographic apparatus, both Cine and Still Form, and we can demonstrate, supply and service same.

In the following pages we list a few representative types, further particulars of which will gladly be supplied on request.

We can also supply at the shortest possible notice all makes of plates, film packs, roll films and printing paper.

Our Developing and Printing department is well known to “N & G” clients. Best work only done.
Developing and Printing list sent with pleasure on request.

We also usually have a few guaranteed second hand sets of “N & G” apparatus to dispose of on our clients’ behalf, all in perfect order, and overhauled at our works.

SPECIAL NOTICE.

We are also makers of all kinds of Scientific Instruments.
We work out Inventors’ Models.

We specialise in small precision press tool work, and accuracy is the keynote of our works.

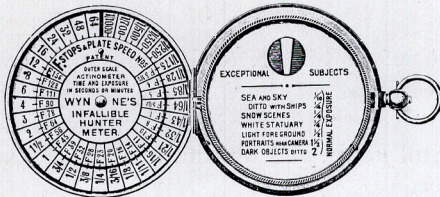
Our charges are moderate.

Our workmanship the highest class.

EXPOSURE METERS.

WYNNE'S INFALLIBLE EXPOSURE METER (PATENT).

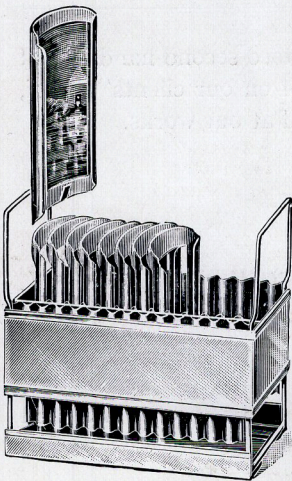
As supplied to H.M. the late QUEEN ALEXANDRA, the Duchess of Bedford, Sir William Crookes, Pathe Freres, Fox Film Company, Scott South Polar Expedition, etc., etc., is an unerring guide to the correct exposure required for every speed of plate on every kind of subject, and under every condition of light, which is shown simultaneously against every stop by the simple movement of one scale.



To find the correct exposure for any set of conditions, two simple operations only are necessary, viz: **FIRSTLY**, expose a small portion of the Sensitive paper through the taper slot in the instrument until it assumes the colour of the standard tint painted on the side, noting the number of seconds or minutes it takes to so colour. This denotes the actinic intensity of the light and is called the **ACTINOMETER TIME**. **SECONDLY**, set this Actinometer time on the outer scale against the F speed No. of the plate used, then against every diaphragm No. on the scale will be found the correct corresponding exposure or shortly, **YOU SET THE ONE SCALE—IT DOES THE REST.**

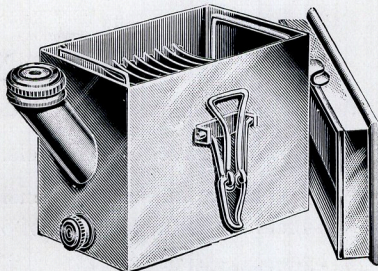
PRICES.

	s.	d.
Hunter Meter in Solid Nickel Case, complete, each	9	6
Extra Packets of Sensitive Paper	0	9
„ Buffed Calf Pocket Meter Cases	1	6
„ Sets of Scales (top and bottom dials complete) on polished White Ivorine	1	2
„ Interchangeable top scale only, F., U.S., or Autochrome	0	8
„ Books of Instructions	0	3
„ Speed Cards	0	3



THE "DALLAN" FILM PACK TANK.

For Developing Plates,
Flat Films,
and Film Packs.



Made in solid brass, Nickel-Plated. Watertight Reversible Lid. Each Tank holds twelve plates or films.

PRICES.

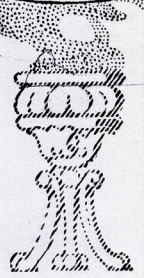
$4\frac{1}{2} \times 6$ c.m.	$3\frac{1}{2} \times 2\frac{1}{2}$	$\frac{1}{4}$ plate	5×4	$\frac{1}{2}$ plate
21/-	24/-	25/-	27/-	35/-



THE DALLMEYER BABY SPEED REFLEX CAMERA

with

f/2.9 "Pentac" Anastigmat Lens
size 4½ × 6 cm. only



For Plates, Cut Films and
Film Packs.

THE Dallmeyer Baby Speed Reflex Camera is unique in design and construction.

The Camera body is made of the finest selected Mahogany covered in real Morocco Leather, the metal parts being made of Duralumin, enamelled black.

The Dallmeyer "Pentac" Anastigmat Lens fitted has a focal length of 4 in. and an aperture of *f*/2.9. This enormous aperture enables photographs to be taken under practically any lighting conditions.

The reflex principle embodied in the camera allows the very best use of so large an aperture lens, as focusing up to the moment of exposure can be carried out. The silver surfaced mirror shows practically the full image obtained on the plate, and unlike the majority of Reflex Cameras is raised by means of a spring. This method allows the camera to be used above the head, thus a high view-point is obtainable. The mirror and shutter work immediately the release is pressed. This release is very light in operation and works in a horizontal plane.

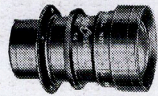
The focal-plane shutter is of the quick-wind, self-capping type, incorporating a slow speed of 1/10th. Speeds of 1/15th, 1/30th, 1/50th, 1/100th, 1/200th, 1/400th and 1/800th of a second, including Time and Bulb, are also provided. The focal-plane shutter runs close to the plate so that the maximum efficiency is obtained.

The camera is set for infinity when in the closed position. Extra extension is obtained by the use of the rack-and-pinion focusing knob which is concealed in the left-hand side of the camera body. Objects as near as 12 in. can be brought into focus.

Provision for raising the front is made and a tripod bush is incorporated in the base of the camera. A revolving back allowing either horizontal or vertical pictures to be taken is a noteworthy feature.

The hood is of a special design and very large considering the small size of the camera.

Weight of Camera : 2 lb. 3 ozs.
Measurements : 5½" × 5" × 5".



Dallon Tele-Anastigmat for use interchangeably.

Code Name.	Particulars.	Price.
Barbar	Dallmeyer Baby Speed Reflex Camera fitted with 4 in. <i>f</i> /2.9 Pentac Lens and 3 double book-form slides	£ s. d. 22 0 0
	Film Pack Adapter	1 1 0
	Leather Case, velvet lined, for Camera as above	1 17 6
	Extra metal book-form slides	15 0
	Lens Hood	4 0 B
	Conta	DALLON 9 in. <i>f</i> /5.6 Telephoto Lens for use interchangeably with Pentac Lens
Leather case for Dallon Lens		8 0 0
Dallmeyer × 2, × 3 or × 4 Filter for Pentac		14 6 0
Wire Release		1 6 0
Dallmeyer Focusing Magnifiers in Case		15 0 0



THE DALLMEYER "DUAL" ROLL FILM CAMERA



WITH the introduction of the Dallmeyer "Dual" Roll-Film Camera we endeavoured to supply the public with photographs at half-price!

The "Dual" Camera takes standard $3\frac{1}{4} \times 2\frac{1}{4}$ in. Roll-Films, 1/- for 8 exposures. Due to the novel construction of this Camera, 16 pictures are obtainable measuring $1\frac{5}{8} \times 2\frac{1}{4}$ in.. approximately vest-pocket size, on one spool of film.

The Dallmeyer "Dual" Camera is fitted with an $f/3.5$ "Dalmac" Anastigmat Lens, the definition and covering power of which allows post-card enlargements to be obtained equalling contact prints. The extreme aperture of $f/3.5$ enables photographs to be taken indoors or late on a summer's evening, the negatives being fully exposed, This Dalmac Lens has been designed to give great resolving power, is free from colour, spherical aberration, coma and distortion, and represents one of our finest series of anastigmat lenses.

The famous Compur Shutter has been chosen on account of its accuracy and construction. It gives speeds of 1 second to $1/250$ th, Time and Bulb, and in addition is fitted with a delayed action, which can be used at will, in order to obtain self-portraits, etc. The highest speeds are particularly suited for the photography of fast-moving objects—motor-car, yacht, horse-racing, etc.

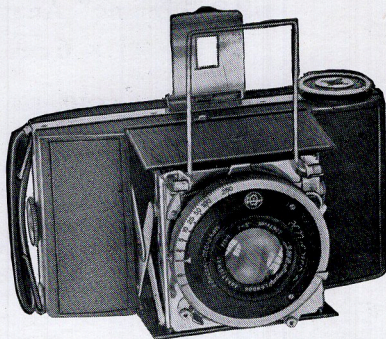
The Camera is made mainly of Duralumin, beautifully covered in real Morocco leather, and chromium-plated. It is small and light, and can easily be carried in the jacket pocket. At the touch of a button the camera glides open to Infinity ready for instant use. Focusing is carried out by novel mechanism, incorporated in the newly designed trellis bars, thereby ensuring absolute rigidity and parallelism of the front at all distances.

A double-frame, direct vision finder is fitted, allowing the camera to be used at eye-level—i.e., the normal and only correct view-point from which a photograph should be taken.

To ensure perfectly sharp negatives, a small metal pressure plate is fitted to the hinged camera back. Further, an air-release valve is situated behind the shutter to eliminate suction on the film when the camera is opened. These novel points ensure the film being kept in a perfectly flat plane.

One Roll-Film—Two with the Dallmeyer "Dual" Camera.

Weight: 1 lb. approx. Measurements: $5\frac{1}{2} \times 3\frac{1}{4} \times 1\frac{1}{2}$ "



Takes 16 Pictures on an 8-Exposure
Film!

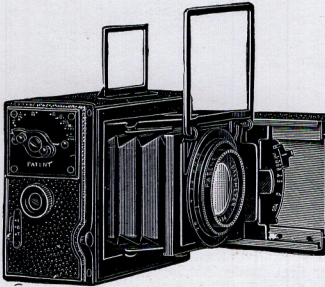
Code Name.	Particulars.	Price.
Duala	Dallmeyer "Dual" Roll-Film Camera, fitted with 3 in. $f/3.5$ Dallmeyer "Dalmac" Anastigmat Lens in Delayed-action Compur Shutter	£ s. d. 12 12 0
	Hand-made leather case, velvet lined	12 6
	Lens Hood	2 6 B
	Dallmeyer Filter, $\times 2$, $\times 3$ or $\times 4$ each	12 6



THE DALLMEYER SPEED CAMERA

with

f/2.9 "Pentac" Anastigmat Lens



THE Dallmeyer "Speed" Camera was the original ultra-speed pocket camera and as such has no equal even to-day. Used by the Amateur, Professional and Press, it has been the means of providing many of our daily papers with exceptional news-photographs.

The Dallmeyer "Pentac" lens fitted, having an aperture of $f/2.9$, allows instantaneous exposures to be taken in very dull interiors.

The use of a lens with such an enormous aperture opens up a field hitherto unapproachable. Exposures are only about a third of that necessary for an $f/4.5$ lens.

The definition over the entire plate is critical and the negatives are brilliant and full of contrast.

The focal plane shutter is of the Quick-Wind, Self-Capping type, incorporating a low speed of $1/8$ th, speeds of $1/16$ th, $1/32$ nd, $1/64$ th, $1/125$ th, $1/250$ th, $1/500$ th and $1/1000$ th of a second, including Time and Bulb, are also provided. The smooth, silent and frictionless working of the shutter, the convenient position and delicacy of release, ensure steadiness when exposing.

A double-frame finder facilitates location and composition and is ideal for Press or High-Speed work. The correct angle of view is shown even when using the rising front.

Focusing is carried out by means of a lever movement, working in front of camera, and all distances are well separated and clearly engraved in yards.

The front is as rigid as a box-form camera. The trellis bars ensure this as well as parallelism of lens to plate—a vital point when employing a lens of extreme aperture.

Rising front to the extent of $3/8$ ths of an inch in the vertical position is provided, and is sufficient to meet the demands of the average worker.

Tripod bushes are provided, for both vertical and horizontal position. These are deep-cut, ensuring a secure hold to Tripod.

The Camera, being largely constructed of Duralumin, allows strength to be combined with lightness. When closed it is self-contained, the lens being enclosed and protected.

Covered with best hard-grained leather, while the fittings are black and silver finished the camera presents an extremely handsome appearance.

PRICES

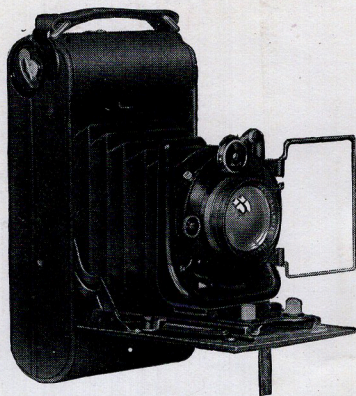
Code Names.		Particulars.	Price.	
$4\frac{1}{2} \times 6$ cm.	$3\frac{1}{2} \times 2\frac{1}{2}$ "		$4\frac{1}{2} \times 6$ cm.	$3\frac{1}{2} \times 2\frac{1}{2}$ "
Spadon	Negar	Dallmeyer SPEED CAMERA fitted with $f/2.9$ PENTAC LENS, 3 Double Book Form Slides and Wire Release	£ 15 0	£ 18 0
		Film Pack Adapter	1 0 0	1 10 0
		Leather Case, velvet lined, for Camera, 3 Slides and F.P.A.	1 1 0	1 5 0
		Extra Book-Form Slides, each	15 0	17 6B
		Lens Hood	3 0	4 0
		Dallmeyer Colour Filter, $\times 2$, $\times 3$ or $\times 4$, for Pentac Lens	14 0	14 6
		DALLON $f/5.6$ for use interchangeably with ordinary Lens	6" 8 0 0	9" 11 0 0
Jonah	Lonar	Fitting to Camera, scaling and supplying mask	10 0	10 0
		Leather Case for Dallon	4 0	8 0



THE DALLMEYER "PENTAC" ROLL FILM CAMERA

with
f/2.9 "Pentac" Lens

**The Fastest Roll Film
Camera Manufactured.**



Takes Standard Size $3\frac{1}{4} \times 2\frac{1}{4}$ " (6×9 cm.)
Roll Films.

THE "Pentac" Roll Film Camera has been specially manufactured to accommodate the *f/2.9* Pentac Anastigmat Lens—the Lens that made interior instantaneous photography without flashlight possible.

The Pentac Lens fitted has a focal length of $4\frac{1}{4}$ " (112 mm.) and covers the film to the extreme corners with perfect definition.

The enormous aperture allows the camera to be used all the year round.

The between-lens shutter, into which the Pentac Lens is mounted, is the famous Compur giving speeds of 1 second, $\frac{1}{2}$, $\frac{1}{5}$ th, $\frac{1}{10}$ th, $\frac{1}{25}$ th, $\frac{1}{50}$ th, $\frac{1}{100}$ th, $\frac{1}{150}$ th and $\frac{1}{200}$ th of a second, including Time and Bulb. The slow speeds are particularly useful when employed in conjunction with such a large aperture lens as the "Pentac." Photography inside the Theatre, at Home, or in the Streets after dark is possible, employing, say, 1 or $\frac{1}{2}$ second exposure. The shutter enables these slow exposures to be given automatically.

The Camera is constructed of a special aluminium alloy, allowing great strength to be combined with lightness.

The "Pentac" in Compur Shutter is held secure and parallel to the film by means of a die-cast "Stirrup" front. The Lens can be raised or lowered out of the centre by moving the lever which projects from the top of the shutter radially, from left to right.

Cross motion is obtained by pressing on the side of the aluminium "U" front, which causes this member to move in its cradle.

The film is held perfectly flat by a spring-loaded pressure pad operating in conjunction with the spring-controlled pressure clip on the body of the spool.

Real leather bellows are fitted as standard.

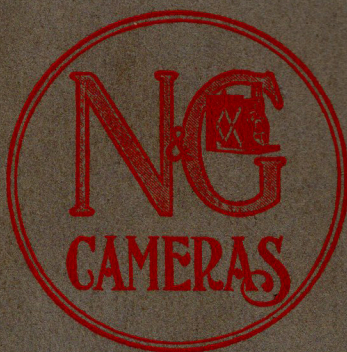
Focusing is carried out by a radial lever on the baseboard.

A double frame view-finder is fitted, clearly showing the exact view to be photographed at eye level.

The changing of spools is facilitated by a new and improved method, there being no loose parts to fall out and get lost.

The Camera is covered in the very best Persian Leather and tripod bushes are provided for both vertical and horizontal pictures.

Code Name.	Particulars.	Price.
Mayba	"Pentac" Roll Film Camera fitted with $4\frac{1}{4}$ " <i>f/2.9</i> Pentac Anastigmat Lens in Compur Shutter with Wire Release	£ s. d. 12 12 0
Ortor	Brown Leather, velvet-lined case with sling	1 1 0
Pusar	Push-on Lens Hood	4 0 0
Noter	9" <i>f/6.5</i> Dallon Tele-Anastigmat Lens for use interchangeably with Pentac	8 0 0
	9" <i>f/6.5</i> Popular Telephoto Lens for use interchangeably with Pentac	5 5 0
	Fitting to Camera, including Scaling	3 6 0
	Dallmeyer Colour Filter for Pentac Lens, $\times 2$, $\times 3$ or $\times 4$...	14 6 0



Chesey & Sons
Printers,
Banbury.