



***FOUR NEW CAMERAS
THAT ARE EVERY THING
AN SLR SERIES SHOULD BE
FUJICA AX-5/AX-3/AX-1/STX-1***

FUJICA
XC SLR

The New Fujica X-Series SLR Cameras

FUJICA AX-5

FUJICA AX-3

FUJICA AX-1

FUJICA STX-1

FOUR NEW CAMERAS THAT ARE EVERYTHING AN SLR SERIES SHOULD BE

Any well designed SLR camera series should cover as wide a range of needs as possible. And that is the carefully considered aim of the new Fujica X-Series. From multi-mode AE control to simple manual operation, these cameras cover the entire field to perfection. Whatever the photographer has in mind, there's a Fujica X-Series SLR camera to suit.

The top-of-the-line Fujica AX-5 is a high-quality, multi-mode SLR camera featuring five different AE modes plus manual exposure control.

Next in line is the Fujica AX-3, a quality SLR with aperture-priority AE, stopped-down AE, electronic flash AE and wide-range manual metering of great sensitivity.

The Fujica AX-1 is an economy AE camera stressing ease of operation.

Finally, the straightforward Fujica STX-1 is a completely manual exposure control SLR offering simple but flexible operation and compactness.

This new four-camera lineup from Fuji points the way to future advances in SLR technology.

The Fujica AX-5 incorporates every useful new advance in electronics, and has reached a technological level which will only be surpassed when extensive further development in the field has been achieved. Featured are five automatic exposure modes — aperture-priority AE, shutter-speed priority AE, programmed AE, stopped-down AE and electronic flash AE — plus manual exposure control whenever desired. This wide range of capabilities is able to respond to any photographic condition and confers complete freedom to realize any photographic concept.

The Fujica AX-3 and AX-1 feature simplified bodies, but incorporating the essential features of the AX-5, to complete an SLR camera series of superb capabilities and quality.

As a system camera series, the new Fujica SLR cameras can be equipped with a complete new line of system accessories. One fine example is the new X-Fujinon lens series, with a new bayonet mount developed to complement the operational simplicity of the camera bodies. There is also the Fujica Auto Winder X. And the Fujica Auto Strobo 300X — with bounce flash capability and a built-in auxiliary flash head. Both enhance creative potential. A new data back, the Fujica Photo Recorder, enables the photographer to enter any desired type of data directly onto the film using the built-in "light pen".

These new lenses and accessories were designed to form an integrated system with the advanced line of Fujica SLR cameras.

In addition to the AX Series, there is also the Fujica STX-1, a basic camera of simple design and function that adds economy to the Fuji concept of simplifying control and adding pleasure to photography. The Fujica STX-1 is a perfect camera for beginners, or as the start of a personal photographic system.

The new Fujica SLR camera series not only introduces a comprehensive new photographic system, but also opens up a whole new era of advanced, creative SLR photography.





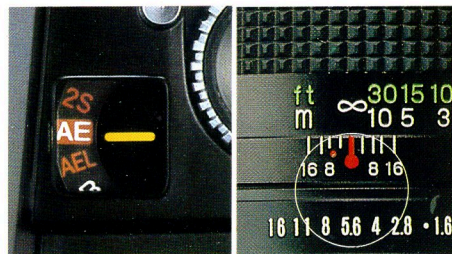
FUJICA AX-5

Five-mode Exposure Automation Plus Manual Control In One Quality Single-lens Reflex Camera

Mode 1: Aperture-priority AE For Total Depth-of-field Control

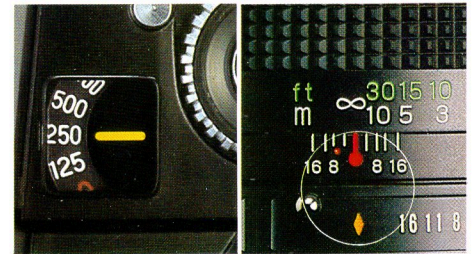
Aperture-priority AE is an extremely valuable tool for photographers who prize depth-of-field control. With the new Fujica AX-5, this function is available by merely setting the shutter speed dial to the "AE" or "AEL" position and then setting the aperture in accordance with the desired effect. The shutter speed will then be set automatically by the camera within the range of 2 seconds to 1/1000 sec. to obtain exactly the exposure required.

This makes possible effects such as making a subject stand out sharply against an out-of-focus background by opening the lens diaphragm to its maximum aperture. An effective technique for portraiture and other medium to close-range photography. Or a scene can be brought into sharp focus throughout by stopping the lens aperture down until the desired degree of sharpness is obtained.



Mode 2: Shutter-speed Priority AE For Total Motion Control

Sports and other types of action photography put a premium on setting just the right shutter speed to obtain the desired effect. Rapid motion can be frozen by using a high shutter speed such as 1/1000 sec. Or a slower shutter speed can be selected to allow intentional blurring of the main subject or background — by panning for example.

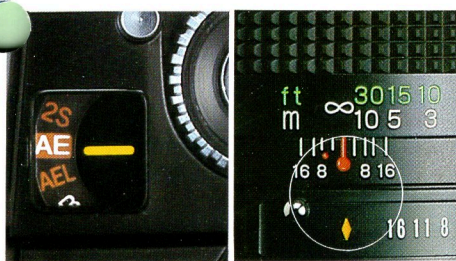


The more experience a photographer gains in action photography, the greater the realization that shutter speed control allows a more accurate rendering of the concept.

And this is where the shutter-speed priority AE function of the new Fujica AX-5 displays its true value. By lining up the diamond-shaped "Auto" mark against the index, the photographer can dial any desired shutter speed and the lens diaphragm will be automatically adjusted to the correct aperture for the exposure conditions the instant the shutter is released.



Mode 3: Programmed AE For Completely Automatic Exposure Control



News photography is a good example of a situation where a photographer must react to the action with little or no time for setting exposure controls. The Fujica AX-5 also features programmed AE, with completely automated control that provides optimum exposure settings under any condition. But one doesn't have to be a news photographer to use this function. It also makes family and travel snapshots more fun and less bother for the amateur.

For total automation through programmed AE control with the Fujica AX-5, the photographer merely sets the "Auto" mark on the aperture ring to the index and the shutter speed dial to "AE" or "AEL". The camera then automatically and instantly determines the proper exposure factors for the situation and programs the correct shutter speed-aperture combination accordingly.

Mode 4: Stopped-down AE For Convenience in Special Situations

The stopped-down AE function of the Fujica AX-5 expands the versatility of the system enormously. It allows the camera to be used with a microscope, reverse adapter, auto bellows, ultratelephoto lenses, and many others, and still provide exposure automation. Earlier lenses of the Praktika screw-mount can also be used in the same way by adding one of the Fujica mount adapters.

Stopped-down AE is easy with the AX-5. The photographer merely sets the shutter speed dial to "AE" or "AEL" (as

for aperture-priority control), sets the desired aperture and holds down the stopped-down button while releasing the shutter. The camera will automatically set the correct shutter speed through any close-up attachment, microscope or lens adapter that can be used with the camera body.

Mode 5: Electronic Flash AE For Simplified, Fully Automatic Flash Photography

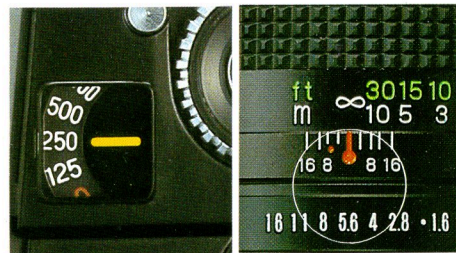


Electronic flash photography is completely automated and amazingly simple when the Fujica AX-5 is combined with the optional Fujica Auto Strobe 300X or AZ. Just set the aperture ring to the desired value* and, when the flash unit is fully charged, the camera will automatically set the shutter speed to the synchronization speed of 1/60 sec. and control flash output in accordance with the set aperture and subject distance. There are no problems of making connections because the AX-5 allows direct X-synchronization through the camera body accessory shoe. Each exposure will receive exactly the correct amount of light for a perfect photo, even when the bounce flash function of the Auto Strobe 300X is used.

Sequential auto flash exposure is also possible when the Fujica Auto Winder X is attached to the camera. The flash and winder coordinate their operation at up to two frames per second.

* The Fujica Auto Strobe 300X can be used at f/2.8, 5.6 or 11. Auto Strobe AZ can be used at all apertures.

Mode 6: Manual Exposure Control For Creative Freedom



The Fujica AX-5 also provides manual exposure control. For producing creative effects or giving photographs a flair of individuality, manual exposure control lets the photographer choose precisely the exposure values required to produce a brighter or darker tone, to highlight key elements of the photo, or create any desired atmosphere or mood.

Manual exposure control is easy with the Fujica AX-5. The LED display in the viewfinder shows both aperture and shutter speed settings, performing the same function as a meter readout display in other cameras, when the light metering button is pressed. In addition, a flashing LED indicates the correct aperture for the shutter speed set. Correct exposure can then be set by adjusting either the aperture or shutter speed until the LED stops flashing. This simple system allows setting of standard exposure values or creative variations to suit the photographic concept.

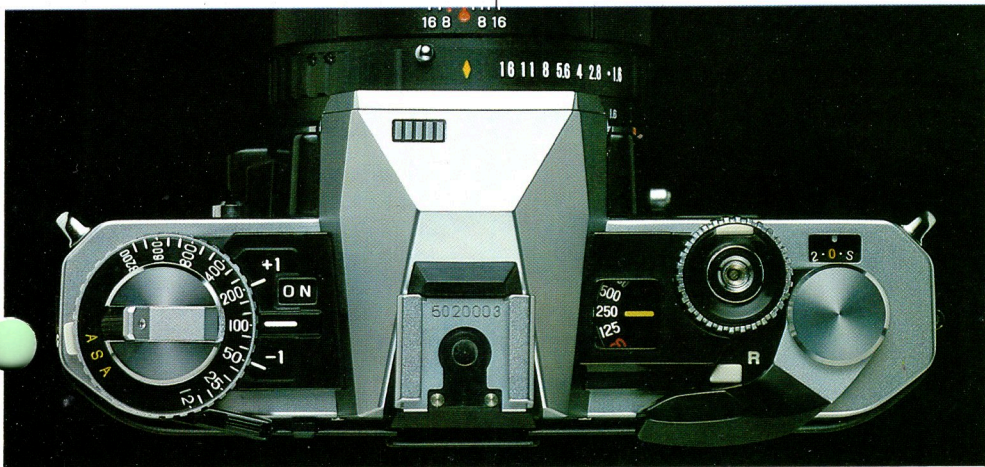
Note: All of the modes are not available when the 55 mm f/2.2 and 400 mm f/4.5 lenses are used.

"Cybernation" Compensates Auto- matic Exposure For Greater Accu- racy

"Cybernation can be defined as the automatic control of a process through the use of a computer. The "Cybernation" system featured in the Fujica AX-5 combines a computer CPU (central processing unit) with automated exposure control in order to gain extra accuracy. A feedback circuit rechecks exposure values the instant the shutter starts to operate and makes any correction necessary after the shutter release is pressed. A subtle touch that means exposures are absolutely correct for the instant the photograph is taken.

Not only that, "Cybernation" also prevents unintentional under- and over-exposure. For example, if the photographer should ignore the under- or overexposure warnings in the viewfinder in the shutter-speed priority AE mode, the camera normally could not set the correct aperture because it simply is not available. In such cases, the "electronic brain" of the Fujica AX-5 recalculates the exposure on the basis of the maximum or minimum available aperture and resets the shutter speed accordingly. Automatically, of course, as though the camera were thinking for itself.

The "Cybernation" system of the Fujica AX-5 operates in both the shutter-speed priority and programmed AE modes.



A COMPACT BODY PACKED WITH ULTRA-MODERN FUNCTIONS



Information Center Viewfinder: LED Display Of Full Exposure Data

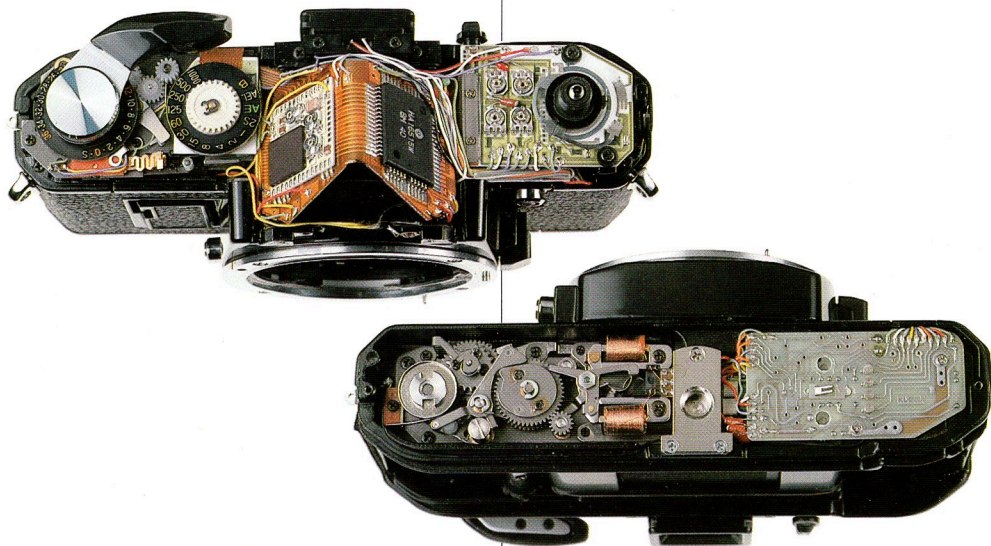
Clearly discernable LEDs display complete exposure information inside of the Fujica AX-5 viewfinder. Included are exposure mode in use, aperture, shutter speed, under- and overexposure warnings and battery check. The LED display lights when the shutter release button is pressed halfway, or when the light metering button is pressed. Exposure data can be checked in any of the AE modes and full information is shown for setting manual exposure. All information is displayed for immediate use without taking the eye away from the viewfinder. So the photographer never misses a shot due to losing sight of the subject.

Fast, Accurate Three-way Focusing

The focusing screen of the Fujica AX-5 incorporates split-image, microprism and matte field focusing capabilities. Together with the bright, clear viewfinder, this makes focusing fast and accurate.

Electronic Self-timer With Audible Signal

The electronic self-timer of the Fujica AX-5 provides a dependable and precise delay of 12 seconds. The only operation necessary is setting the on/off switch to the "SELF" position and pressing the shutter release. An audible signal tells the photographer when the self-timer is in operation.



Cordless Flash Connection With Direct X-Sync Contact

The Fujica Auto Strobe 300X and AZ units can be directly connected to the AX-5 for electronic flash AE operation. Direct X-sync connection is provided by merely clipping the flash unit to the hotshoe of the camera. No other special settings or operation are required.



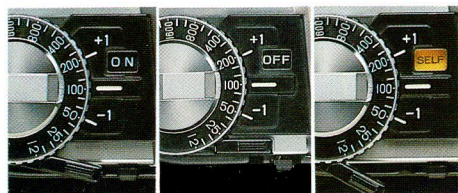
Auto Winder Operation

The Fujica Auto Winder X can be attached to the Fujica AX-5 for continuous operation at speeds of up to 2 frames per second, or for single frame shooting without the bother of manual film winding.

Smooth Film Advance Lever Operation

The film advance lever of the Fujica AX-5 is exceptionally light. Set at an ideal stand-off angle of 25°, the lever is easily engaged by the thumb. And ratchet operation with a wind angle of 144° enables fast, sure operation. Minimal friction in the mechanism makes movement smooth and quiet.

On/Off/Self-timer Switch



The on/off switch can be easily operated to save battery drain due to the camera always being on. This switch also doubles as the Self-timer Switch.

Two-way Exposure Metering

Whenever the shutter release button of the Fujica AX-5 is partially depressed, the exposure metering system is activated and the LED display lights up. In addition, this can also be done by pressing the white light metering button located on the rim of the shutter speed dial. Which means that the LED display can be lit and the shutter speed adjusted using just one finger.

Reversing-type Frame Counter

The frame counter is coupled to the film rewind action so it resets as the film is rewound, a convenient way to check rewind progress. Also resets to zero when back is opened.

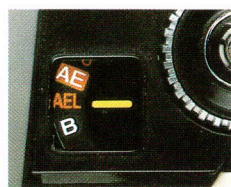
Film Check Window

One glance at the Film Check Window tells if film is loaded into the camera. And film type plus number of exposures can be seen when Fuji films are used.

LED Battery Checker

When battery power is running low, the red LED on the left side of the viewfinder blinks when the shutter release is partially depressed, or when the light metering button is pressed.

AE Lock Aids Exposure Compensation



The "AEL" position on the shutter speed dial indicates AE Lock. This function provides easy additional exposure compensation when operating in the Aperture-priority and Programmed AE mode. When the shutter release is partially depressed, the exposure reading is locked in until the shutter is released or the finger removed from the shutter release button.

The AE Lock is especially useful in such situations as where the subject is strongly backlit, yet it is desired for the subject to be correctly exposed. This can be easily done by moving close to the subject, locking in the exposure reading and moving back to the desired position to take the photograph.

Soft-touch Electromagnetic Shutter Release

The modern electromagnetic shutter release of the AX-5 requires only a light 100 grams of pressure to operate. A great help in preventing blurred pictures due to camera shake when releasing the shutter.

Fractional Exposure Control



The Fractional Exposure Control built into the film speed dial enables exposure compensation of plus or minus one full f-stop in increments of one-third step. Useful for taking high or low key shots as well as for many other creative effects.

Eyepiece Shutter

When an exposure is made with the eye away from the viewfinder eyepiece, such as when using the self-timer, ambient light sometimes enters the eyepiece and causes exposure error. The Fujica AX-5 is equipped with a convenient eyepiece shutter that can be closed to ensure that exposures are always correct in such cases.

Multiple Exposure

Multiple exposures are easy with the Fujica AX-5. Just take the first exposure in the normal way, then press the R (rewind) button to prevent the film being advanced when the film advance lever is operated. Repeat as many times as desired.

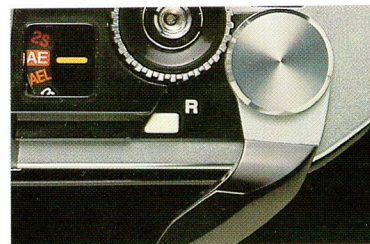


Photo Recorder, the Unique Fujica Data Back

In order to enter data directly on the film, the regular back of the Fujica AX-5 can be replaced by the unique Fujica Photo Recorder data back. The built-in "light pen" allows any type of data to be recorded.







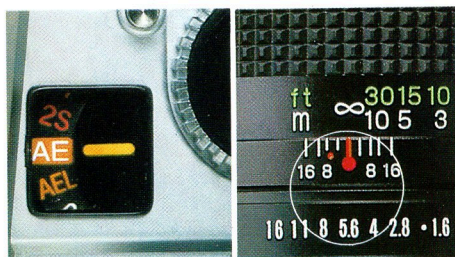
FUJICA AX-3

A Quality SLR Camera Featuring Three AE Modes Plus Manual Operation

The Fujica AX-3 offers aperture-priority, stopped-down and electronic flash AE modes, as well as manual control of exposure settings. The most advanced electronics technology and highest mechanical precision available today make photography both easy and enjoyable with the Fujica AX-3.

Featuring all the essential functions of the Fujica AX-5, this camera was designed to fully and economically meet the needs of all types of photographers. The Fujica AX-3 also accepts the Fujica Auto Winder X and a special data back, the Fujica Photo Recorder, as well as the Fujica Auto Strobe 300X and AZ.

Mode 1: Aperture-priority AE For More Accurate Photographic Expression



Perfectly exposed photographs are obtained by setting the shutter-speed dial to "AE" or "AEL" and setting the desired aperture. Shutter speeds will be adjusted automatically from a slow 2 seconds to a

stop-motion 1/1000 sec.

Aperture settings are directly visible in the viewfinder for rapid adjustment to changing conditions. Just a touch of the shutter release gives perfect results every time.

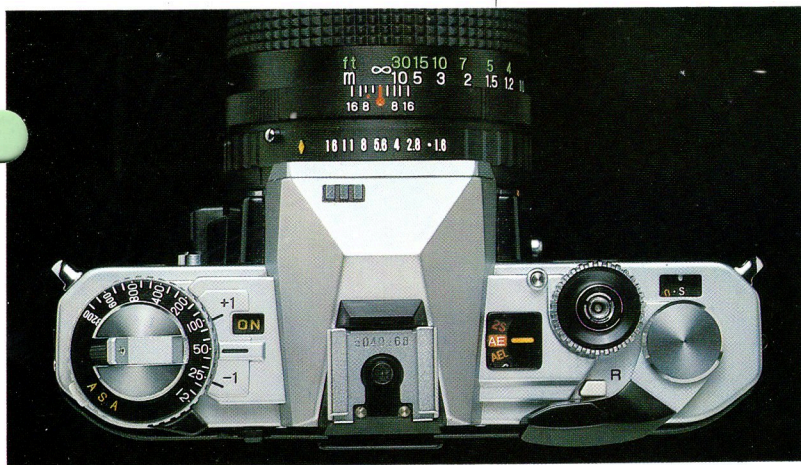
Mode 2: Stopped-down AE For Convenient Close-up and Microphotography

The stopped-down AE feature of the Fujica AX-3 is extremely convenient in close-up photography using bellows or other equipment, or for photographing through a microscope. For ordinary use, this feature also allows AE operation with the earlier Praktika screw-mount lenses when the Fujica mount adapters are used. With the shutter-speed dial set at "AE" or "AEL", just press the depth-of-field preview button and release the shutter for perfect exposure, automatically, with every shot.

Mode 3: Electronic Flash AE For Effortless Flash Photography

Combining the Fujica AX-3 and its many capabilities with the Auto Strobe 300X or AZ simplifies auto exposure flash photography to the maximum degree. The direct X-sync connection eliminates cords. And the shutter speed is automatically set to 1/60 sec. when the flash unit is fully changed. Releasing the shutter then puts the right amount of light on the subject for perfectly exposed flash photos without any effort at all.





Mode 4: Manual Operation For Your Creative Photography

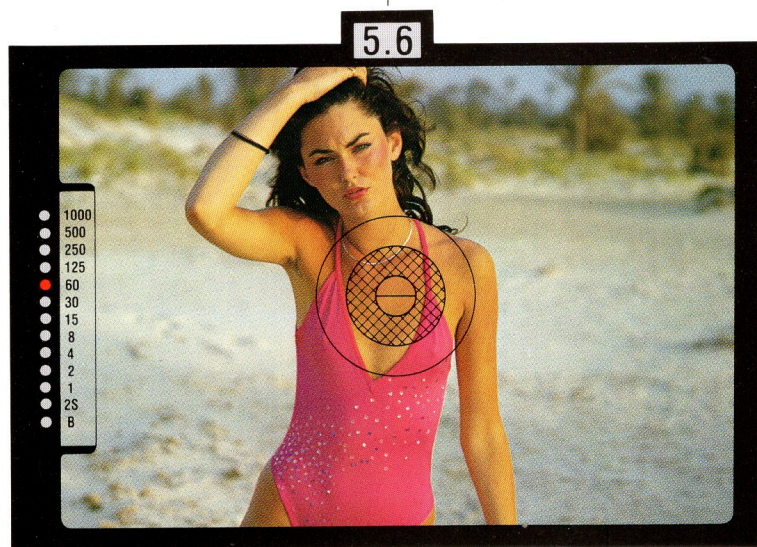
The electronic shutter of the Fujica AX-3 also permits manual control of exposure settings when desired for creative effects or other purposes. One LED inside the viewfinder lights to indicate the set shutter speed while another blinks to indicate the correct shutter speed for the aperture being used. Exposure can be set to provide exactly the mood desired by emphasizing certain details, or for experimenting with creative techniques. Manual shutter speeds are B, 2 to 1/1000 sec.

Note: The 400 mm f/4.5 telephoto lens can be used only with stopped-down metering with the Fujica AX-3.

Centralized LED Display of Full Exposure Data in Viewfinder

The full information center viewfinder of the Fujica AX-3 allows the photographer to check and set all exposure data even while framing the subject. There's never a missed opportunity.

Shutter speeds, over- and under-exposure warnings and battery condition are all clearly displayed by LED readouts and apertures are visible at the top of the viewfinder. Focusing is swift and easy, thanks to the three-way focusing screen with choice of split-image, microprism and matte field, plus the bright, clear viewfinder.



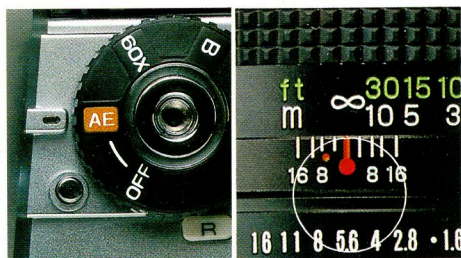
- ☐ Sequential shooting at up to two frames per second, or single-frame film advance, with the optional Fujica Auto Winder X.
- ☐ Mounted in place of the regular camera back, the Photo Recorder enables any type of notation to be made directly on the film.
- ☐ Simplified one-touch multiple-exposure capability expands creative potential.
- ☐ The electromagnetic shutter release requires only a light 100 grams of pressure.
- ☐ A precise 12-second delay with audible signal is provided by the Electronic Self-timer.
- ☐ The handy eyepiece shutter prevents exposure errors due to ambient light entering the viewfinder.
- ☐ The film counter resets as the film is rewound for easy checking of the progress of rewinding. Also resets to zero when the camera back is opened.
- ☐ The Film check window tells you at a glance if there is film in the camera. When using Fuji films, you can also check the type of film and number of exposures.



Simple AE Operation and Economy, Plus Cost-performance You'll Have to See to Believe

The new Fujica AX-1 features aperture-priority, stopped-down AE and electronic flash AE control. Other quality features are multiple-exposure mechanism, electromagnetic shutter release and electronic self-timer. The AX-1 also accepts the Fujica Auto Winder X, Fujica Auto Strobe 300X and AZ, and the Fujica Photo Recorser. Yet the AX-1 is so simple to handle that anyone can take outstanding photos. Another big feature is the amazingly low price for a camera of such advanced performance.

Total Photographic Freedom With Aperture-priority AE



The Fujica AX-1 allows the photographer to concentrate on the main subject, without the fuss and bother of constantly making exposure adjustments. Just set the shutter speed dial to "AE", select the desired aperture and press the feather-light shutter release. Shutter speeds are adjusted automatically to perfectly match the light conditions, with a range from 1/2 to 1/1000 sec. Photography with the AX-1 is a snap, even for beginners, because there's never the danger of missing a good shot.

Note: The 400 mm f/4.5 telephoto lens can be used only with stopped-down metering with the Fujica AX-1.

Numerous Other AE Possibilities

The Fujica AX-1 can also be used in the stopped-down AE mode, convenient for shooting close-ups using a bellows, microscope or other attachments. The earlier Praktika screw-mount lenses can also be attached using the Fujica mount adapters for use in this mode. After setting the shutter speed dial to "AE" and selecting the aperture, simply press the stopped-down button and release the shutter. The shutter speed will be set automatically for perfect exposure even under such normally difficult conditions.

Superb results are also possible at night or indoors with the Fujica AX-1 because electronic flash AE photography is so easy. Direct X-sync contact eliminates cords, so all that is necessary is to attach the Auto Strobe 300X or AZ and shoot. The camera automatically sets

the shutter speed to 1/60 sec. (sync speed) when the flash unit is fully charged. Perfect flash exposure is guaranteed for every picture without making any adjustment whatsoever.

Full Information Viewfinder



LED displays inside the viewfinder show shutter speed, over- and under-exposure warnings and battery condition. The eye never has to leave the viewfinder to check exposure information. The clear, bright viewfinder also features a three-way focusing screen with split-image, microprism and matte field for fast, accurate focusing under any condition and with any type of lens.

- ☐ The Fujica Auto Winder X can be attached for sequential shooting at up to 2 frames per second, or single frame advance.
- ☐ The Fujica Photo Recorser replaces the normal camera back to allow entry of any type of information directly on the film using the special "light pen."
- ☐ One-touch multiple-exposure capability enables greater creativity.
- ☐ A mere 100 grams of pressure is sufficient to operate the electromagnetic shutter release.
- ☐ Electronic self-timer provides a precise 12-second delay and gives an audible signal.
- ☐ Exposure errors due to entry of ambient light through the viewfinder eyepiece are prevented by the convenient eyepiece cap.
- ☐ The film counter resets as the film is rewound so progress can be easily checked.
- ☐ The Film Check Window tells at a glance if there is film in the camera. When using Fuji films, you can also check the type of film and number of exposures.
- ☐ Fractional Exposure Control allows exposure values to be varied by ± 1 f-stop to compensate backlighting and other conditions.

FUJICA AX-1



FUJICA STX-1

A Simplified SLR Camera With TTL Full Aperture Metering Plus Outstanding Performance and Quality Features

The Fujica STX-1 brings the pleasure and ease of SLR photography at an extremely low cost. Simple and functional, yet with outstanding performance, the STX-1 offers full-aperture TTL metering, shutter speeds from 1/2 to 1/700 sec., a three-way focusing screen, handling ease and high efficiency. Full SLR performance, functions and features have been incorporated at low cost with no loss of quality.

Easy Match-needle Exposure Metering



The operating controls of the Fujica STX-1 were designed for simple, foolproof operation. Merely centering the exposure meter needle gives the precise exposure required. Manual shutter-speed priority exposure control is possible by first setting the desired shutter speed and then adjusting the aperture accordingly. This allows selecting a high shutter speed for sharp results or a slower speed for intentional blurring and other creative effects. When depth-of-field is important, as in portraits, the desired aperture can be set first and then the shutter speed adjusted as necessary.

Fast, Accurate Three-way Focusing

The bright, clear viewfinder of the Fujica STX-1 makes focusing fast and

accurate with a special three-way focusing screen with a choice of split-image, microprism and matte field.

New X-Fujinon Lens Series Used

The Fujica STX-1 uses the same new X-Fujinon bayonet mount as the other cameras of the series. Newly developed especially for these cameras, the new X-Fujinon lenses offer total creative freedom for the photographer. The kind of freedom available only with a large range of interchangeable lenses capable of meeting every photographic demand.



A Compact, Lightweight Body That Provides Easy Handling

Measuring only 135 x 88 x 85 mm with the standard f/2.2 lens attached, the Fujica STX-1 is extremely compact. And weight is a mere 690 grams (24.2 oz.). This compactness and light weight not only makes the STX-1 easy to handle, it also makes it possible to take the camera along anywhere with complete comfort.

- ☐ Shutter speed range of B, 1/2 to 1/700 second handles any situation.
- ☐ The shutter release button features light action.
- ☐ Operation of the film advance lever is extremely smooth and easy. Both stand-off and wind angles are ideal for easy operation.
- ☐ Oil-less metal is used in main shutter parts to insure extra durability and longer service life.
- ☐ Fuji's unique black matte flocking eliminates reflection inside the camera for sharper, clearer pictures.





The Newly Developed X-Fujinon Lens Series – Lightweight, Compact Lenses With A New Bayonet Mount For Fast, Accurate Lens Changes

Convenient Lens Interchangeability With The Newly-developed Fujica X Bayonet Mount

Every model in Fujica's new X-Series of SLR cameras features the new Fujica bayonet mount system. Lens changes are simple, fast and sure. And lenses lock securely into place with only a 1/6 (65°) turn.



Aperture Coupling Lever

Full Aperture Signal Pin



Automatic Aperture Lever

The New High-performance X-Fujinon Compact Lens Series

An attractive characteristic of bayonet mount lenses is the combination of compactness with large diameter. Fujica's new X-Fujinon lenses are all compact and lightweight. They are also sharp with outstanding color balance and high contrast. They perfectly complement the compact, lightweight new Fujica X-Series SLR cameras, for easy handling and total portability.

Special Adapters Enable Use of Earlier Practika Screw-mount Lenses

Two special adapters make it possible to use the earlier Practika screw-mount lenses with Fujica's new SLR cameras. These adapters are the X-D and the X-S. Adapter-lens combinations are shown in the table below.

Fujica Mount Adapter X-D

FUJICA AX-5

Aperture-priority AE
(stopped-down)

Shutter-speed Priority AE

Programmed AE

Electronic Flash AE
(with Fujica Auto Strobe 300X)

Fujica Mount Adapter X-S

FUJICA AX-3/AX-1

Aperture-priority AE
(stopped-down)

Electronic Flash AE
(with Fujica Auto Strobe 300X)

FUJICA STX-1

Manual
(stopped-down)

New Fujica Accessories That Increase Photographic Potential

- ☐ Fujica Extension Tubes X (25 mm and 50 mm)
- ☐ Fujica Reverse Adapter X
- ☐ Fujica Microscope Adapter X
- ☐ Fujica Auto Bellows X
- ☐ Fujica Slide Copier X
- ☐ Fujica Focusing Rail X
- ☐ Fujica Macro cine Copy X
- ☐ Fujica Lens Hood (for 55 mm lens)
- ☐ Fujica Eyecup
- ☐ Fujica Angle Finder
- ☐ Fujica Eyesight Adjustment Lens
- ☐ Fujica Closeup Lens
- ☐ 2X Auto Tele-converter Lens X DM
- ☐ Carrying Case for Fujica Cameras



X-FUJINON INTERCHANGEABLE LENSES

Type	Name of Lens	Composition (com. — elem.)	Angle of View	Aperture		Min. Focus Distance		Weight g (oz)	Dimensions (mm)		Hood	Filter dia. (mm)
				Diaphragm	Min. f-stop	In meters	In feet		Max. dia.	Length		
Wideangle	EBC X-Fujinon-W 24mm f/2.8 DM	8—9	84°	Automatic	16	0.25	0.8	195 (6.8)	61.5φ	45.5	Square hood push-in	49φ
	EBC X-Fujinon-W 28mm f/3.5 DM	5—5	74°	Automatic	16	0.3	1.0	160 (5.6)	61.5φ	41.0	Square hood push-in	49φ
	EBC X-Fujinon-W 35mm f/2.8 DM	6—7	63°	Automatic	16	0.35	1.2	190 (6.7)	61.5φ	46.0	Round hood screw-in	49φ
Normal	*X-Fujinon 50mm f/1.6 DM	6—6	48°	Automatic	16	0.6	2	175 (6.1)	61.5φ	36.5	Round hood screw-in	49φ
	*EBC X-Fujinon 50mm f/1.6 DM	6—6	48°	Automatic	16	0.6	2	175 (6.1)	61.5φ	36.5	Round hood screw-in	49φ
	X-Fujinon 55mm f/1.6 DM	4—5	43°	Automatic	16	0.45	1.5	275 (9.6)	61.5φ	51.0	Round hood screw-in	49φ
	EBC X-Fujinon 55mm f/1.6 DM	4—5	43°	Automatic	16	0.45	1.5	275 (9.6)	61.5φ	51.0	Round hood screw-in	49φ
	X-Fujinon 55mm f/2.2	4—4	43°	Automatic	16	0.6	2	130 (4.6)	61.5φ	37.0	Round hood screw-in	49φ
Telephoto	EBC X-Fujinon-T 100mm f/2.8 DM	4—5	24°	Automatic	22	1.0	3.3	245 (8.6)	61.5φ	61.5	Round hood rew-in	49φ
	EBC X-Fujinon-T 135mm f/3.5 DM	4—4	18°	Automatic	22	1.5	5	290 (10.2)	61.5φ	79.0	Round hood screw-in	49φ
	EBC X-Fujinon-T 200mm f/4.5 DM	5—5	12°	Automatic	22	2.5	8.2	490 (17.2)	64.5φ	134.0	Built-in	49φ
	EBC X-Fujinon-T 400mm f/4.5	4—5	6°	Manual	45	8	26	1940 (68.0)	101.0φ	291.5	Built-in	49φ
Zoom	X-Fujinon-Z 29—47mm f/3.5—4.2 DM	8—8	74°—50°	Automatic	22	0.6	2	285 (10.0)	64.5φ	52.0	Round hood push-in	55φ
	X-Fujinon-Z 43—75mm f/3.5—4.5 DM	7—7	54°—32°	Automatic	22	1.2	4	310 (10.9)	64.0φ	62.5	—	49φ
	EBC X-Fujinon-Z 75—150mm f/4.5 DM	9—12	32°—16°	Automatic	22	1.8	6	715 (25.0)	69.5φ	144.5	Built-in	62φ
Fisheye	EBC X-Fujinon-F 16mm f/2.8 DM	8—12	180°	Automatic	16	0.2	0.7	408 (14.3)	74.0φ	56.0	Built-in	Built-in (four types)
Macro	EBC X-Fujinon-M 55mm f/3.5 DM	4—5	43°	Automatic	22	0.24	0.8	202 (7.1)	61.5φ	53.5	—	49φ

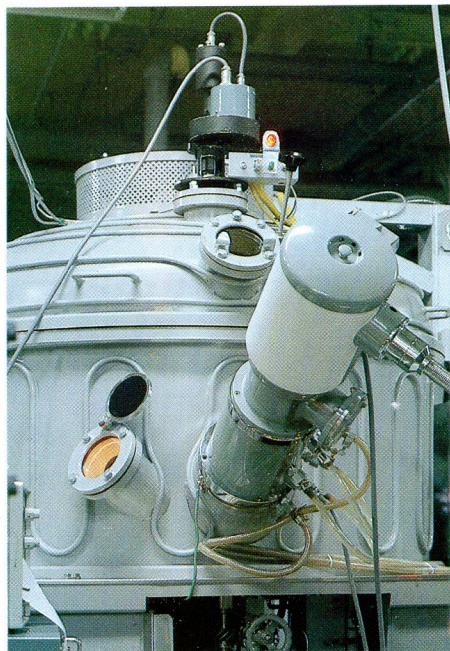
* To be made available soon. Note: These specifications are subject to change without notice due to new developments.

Electron Beam Coating (EBC)

A unique, patented Fuji process

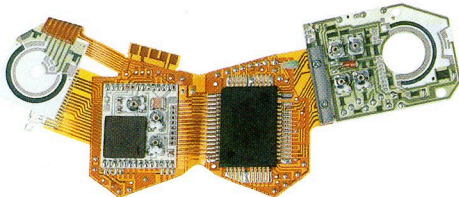
Most quality lenses are coated, but EBC is significantly different in three respects: (1) the number of coats, (2) the thinness of the coatings and (3) the materials used for coating. EBC lenses receive up to 11 coatings on key lens elements, coatings that are exceptionally uniform and thin. Using an electron beam, virtually all ideal coating substances can be melted (including, for example, zirconium oxide — a substance which cannot be used for lens coating with conventional methods).

The final result is up to 99.8% light transmittance, sharper pictures, and virtual elimination of flare and ghost.



The Highly Advanced Electronics Technology of The AX-5

The Highly Advanced Electronics Technology of The AX-5



Electronics Accuracy and Reliability

The electronics circuitry of the Fujica AX-5 is divided into four major blocks, all of which are ICs. This reduces the number of individual parts enormously, with the result that both accuracy and reliability are vastly improved. Heart of the exposure control system is a 7000-element micro-computer with a highly integrated I²L (Integrated-Injection Logic) LSI. The role of this amazingly complex but diminutive computer is to calculate optimum exposure values on the basis of such data as film speed, compensation values, intensity of the light from the subject, etc.

To make sure that the computer gets the most accurate information possible concerning light conditions, a new silicon cell with even faster response and wider linearity range has been developed for the AX-5.

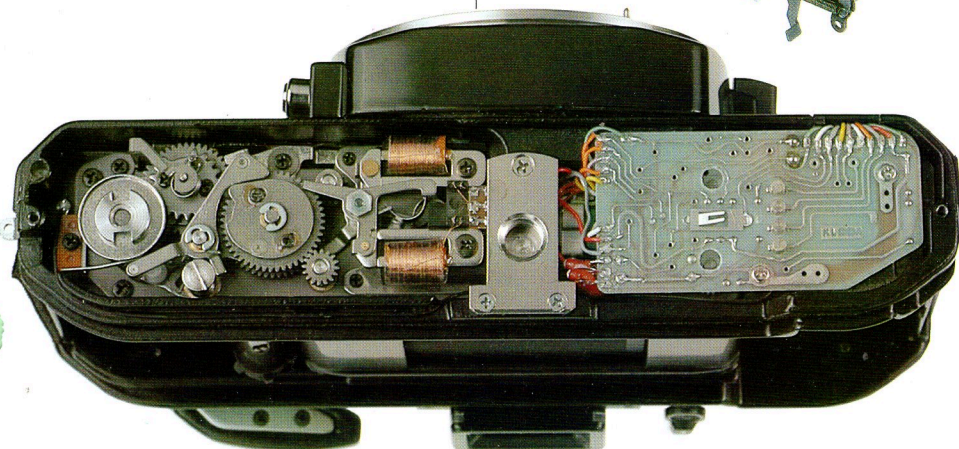
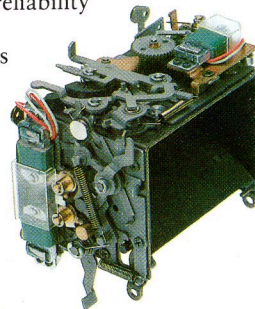
Linear Resistance

Further evidence of the advanced technology of the AX-5 is the use of linear resistance, instead of the step arrangement of most other cameras, for extremely accurate transmission of shutter speed and film speed information within the camera. And aperture information is transmitted by a tiny but highly accurate potentiometer.

Reliable Electromagnetic Control Via Electronic Switches

To ensure more precise timing of shutter speeds, electromagnets are used to control the front and rear shutter curtains. A combination electromagnet is also used to control the action of the mirror and lens aperture.

In turn, these electromagnets are controlled by electronic switches instead of the mechanical switches conventionally used. Unlike mechanical switches, these electronic switches have negligible mechanical error and time-lag. The result is extremely high reliability and accuracy through electronics technology.



FUJICA AUTO WINDER X

A Compact New Winder Featuring Continuous 2 Frames Per Second Operation or Single-frame Advance



Continuous shooting capability is a powerful tool for capturing photographic opportunities the instant they arise. And the 2 frames per second performance of

the new Fujica Auto Winder X is one of the most advanced of such tools. Single-frame operation is also possible with a flip of a single switch. A winder is extremely convenient for catching fast-breaking shots of action or even daily activities.

Compact and Lightweight for Extra Mobility

A compact but powerful new D.C. motor design has been used in the Fujica Auto Winder X for extra compactness and light weight. Used with the AX-5, AX-3 or AX-1 camera bodies, it is one of the lightest and most compact body/winder combinations available, and leaves the photographer free to move with the action.

Easy, One-operation Connection

Connecting the Fujica Auto Winder X is amazingly simple. Just attach it to the camera base with the convenient mounting screw and the electronic/mechanical linkage between winder and body meshes perfectly. It's that easy.

Bounce Flash Capability

Bounce flash techniques help to add a more natural flavor to photographs by diffusing the light from the flash unit. This technique is effortless with the Fujica Auto Strobe 300X. All that's necessary is a simple adjustment of the angle of the flash head. The CPU in the camera body makes all exposure calculations, automatically. Even a complete beginner can get real professional bounce flash results.



Built-in Auxiliary Flash Head

In addition to the main flash head (Guide No. 25 ASA100/m), the Auto Strobe 300X features a built-in mini-size auxiliary flash head (Guide No. 6 ASA100/m). This head operates automatically whenever the main head is used for bounce flash. It acts as a fill-in light to prevent shadows and add sharpness to the lighting of the subject. The result is more expressive flash pictures with professional studio lighting effects.

FUJICA AUTO STROBO 300 X

Fujica's New Auto Strobe 300X – Bounce Flash Capability and Built-in Auxiliary Flash



Fully controlled through the electronic circuitry of the body, the new Fujica Auto Strobe 300X is almost an integral part of the camera. The entire spectrum of electronic flash capabilities becomes available by simply attaching the unit to a Fujica AX-5, AX-3 or AX-1 camera body. Direct X-sync is provided by the hotshoe contact. And the shutter speed of the camera is automatically set to the synchronization speed of 1/60 sec. when the flash is fully charged. Auto or manual flash control can be selected with a simple switch. Sequential flash photography is also possible when using the Auto Strobe 300X with the Auto Winder X. Normal auto flash operation is possible with the Fujica STX-1 body.

FUJICA AUTO STROBO AZ

FUJICA PHOTO RECORDER

FUJICA AUTO STROBO AZ

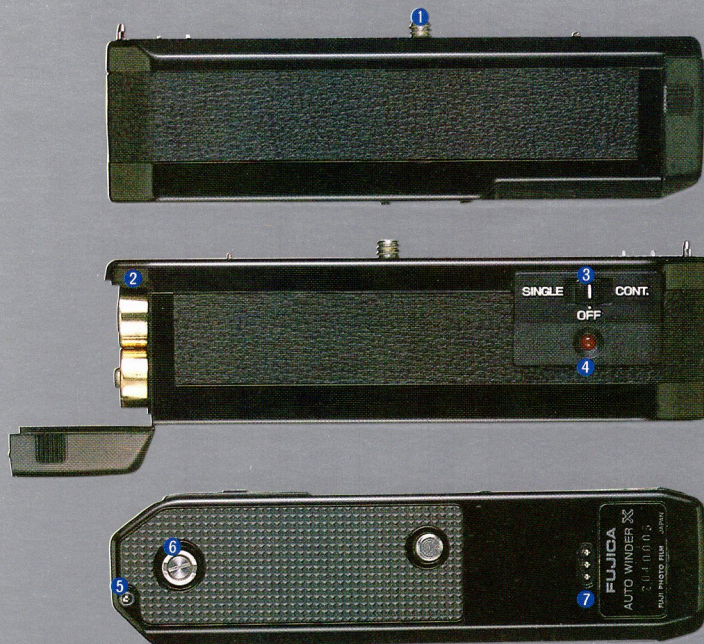
Completely Automatic Electronic Flash

The Fujica Auto Strobe AZ enables completely effortless automatic flash exposure by merely clipping the unit onto the hotshoe of one of the Fujica AX cameras. Film speed is automatically sensed and flash output adjusted accordingly. And operation is possible at any aperture. The result is the easiest, most accurate flash photographs ever.

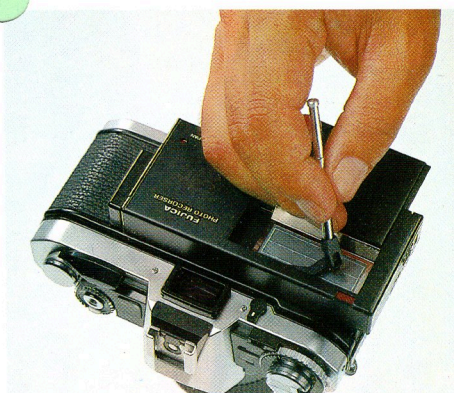
Used with the Fujica STX-1, the Auto Strobe AZ delivers normal automatic flash operation with output adjustment in accordance with subject distance after the desired aperture and flash sync shutter speed of 1/60 sec. have been set.



- ① Mount Screw
- ② Battery Chamber
- ③ SING./CONT. Selector Switch
- ④ Pilot Lamp
- ⑤ Guide Pin
- ⑥ Film Advance Coupler
- ⑦ Terminal



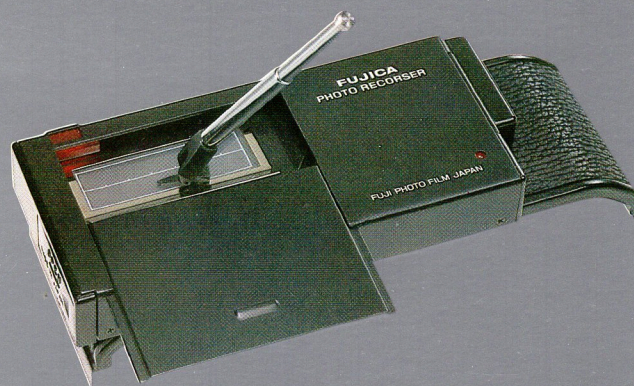
A New Idea In Data Backs – Complete Freedom in Entering Data and Notes



The Fujica Photo Recorder is a revolutionary new data back design which allows the photographer to enter any desired data directly onto the film. Unlike other data backs, which allow only limited numerical or alphabetical notations, Photo Recorder features a built-in "light pen" which enables the insertion of any kind of data, including notes, symbols, directions, names, messages and more.



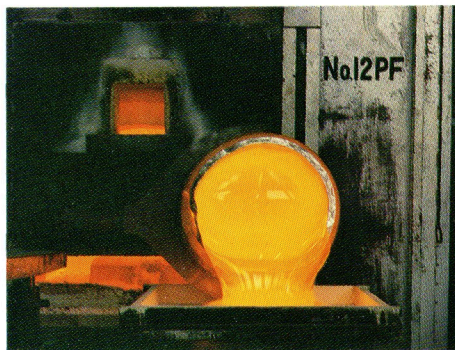
- ① Main Flash Tube
- ② Sub Flash Tube
- ③ Sensor Window
- ④ Aperture Selection Switch
- ⑤ Bounce Angle Indicator
- ⑥ Auto Aperture Range Indicators
- ⑦ Film Speed Setting Ring
- ⑧ Test/Pilot Lamp
- ⑨ Main Switch



This is Fuji Film

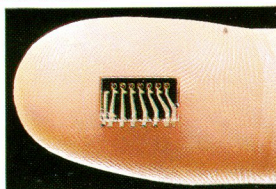
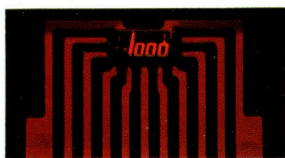
Technology That is Known Around the World

Fuji Film is one of the world's most experienced and advanced manufacturers of photographic and allied products. And the vast knowledge of the entire field of photography gained during more than forty years is utilized to the utmost in the constant development and production of a vast array of allied products. A range that includes everything from the wide variety of superb Fuji films to some of the world's finest professional lenses, and much more.



In addition to these long years of experience and some of the world's most advanced technology, Fuji also boasts of a completely integrated production system. A system which provides full control over each and every stage in the manufacturing process. As part of this system, Fuji Film manufactures its own optical glass to assure the most stringent quality standards are carefully met. The supply of basic lens materials to other manufacturers is proof of the quality. This system also assures that quality is not only high but that it is consistently uniform as well. A guarantee that each customer obtains the finest available when he purchases a Fuji Film product.

This total capability has also helped Fuji Film become a pioneer in the development of many world's firsts in photography. For example, Fuji led the world in the introduction of such new features as silicon photo diodes, light emitting diode (LED) and digital LED viewfinder displays of exposure information. There is also Fuji's unique EBC (Electron Beam Coating) used on many of the Fujinon lenses for nearly total light transmission of 99.8%, sharper photographs and virtual elimination of ghost and flare.



Besides the world-famous photosensitive materials and the new series of SLR cameras introduced in this catalog, Fuji Film also produces a compact camera series which includes the world's first 110 camera with both flash and auto winder built in, 8 mm movie cameras and projectors, film processing equipment, microfilms and microfilm equipment, graphic arts materials and magnetic tapes, and many, many more.

The comprehensive range of Fuji Film activities, the advanced technology and the enormous production capacity mean that the customer always gets the best possible product at the most reasonable price possible.



FUJICA AX-5 SPECIFICATIONS

- Type:** 35mm single-lens reflex multiple-mode automatic exposure camera with focal plane shutter.
- Picture Size:** 24 × 36mm.
- Exposure Modes:** Aperture-priority AE, shutter speed-priority AE, programmed AE, stopped-down AE, electronic flash AE, fully metered manual.
- Standard Lenses:** EBC X-Fujinon 50mm f/1.6 DM. EBC X-Fujinon 55mm f/1.6 DM. X-Fujinon-Z 43mm — 75mm f/3.5 — 4.5 DM.
- Lens Mount:** Fujica-X bayonet; 65° turning angle; flange back 43.5mm.
- Viewfinder:** Fixed eye-level pentaprism, silver-coated.
Field of view: 92% vertical and horizontal.
Magnification: 0.86x (with 50mm lens at infinity).
Focusing: 3-way system (split image, microprism, ground glass).
Mirror: Quick-return mirror, surface-treated for increased light reflection.
Eye-piece shutter: Built-in, lever-operated.
- Viewfinder Information:** By LED display.
Indicators: LED indication of exposure modes, shutter speeds (with scale), apertures (with scale); over/under-exposure warning, battery warning.
Activation of display: Viewfinder display activated by halfway pressure on shutter release button, or full depression of Light Metering Button, with main power switch on.
- Auto Exposure System:** Electronically controlled; selection of auto exposure modes by shutter speed dial and aperture ring.
Exposure meter: Through-the-lens (TTL) center-weighted averaging meter, with silicon photocells.
Metering range: EV 0 — 18 (2 sec. at f/1.4 — 1/1000 sec. at f/16, ASA 100/21 DIN).
Film speeds: ASA 12 — 3200 (12 — 36 DIN).
AE lock: With shutter speed dial on "AEL," pushing halfway down on shutter release freezes meter reading, locks it in memory.
Exposure compensation: Up to ±1 f-stop steplessly (click-stopped in 1/3 steps); by film speed dial.
Stop-down button: Lens diaphragm closed down while pressure is kept on the button.
- Manual Exposure:** Full metering capability, with LED indication of selected aperture and shutter speed, plus proper aperture.
- Shutter:** Electronically controlled cloth focal plane shutter, oil-less metal used in critical friction points.
Speed range: 2 sec. to 1/1000 sec. plus B.
Multiple exposure: Working film advance lever while pushing on "R" (for Rewind) button primes shutter for multiple exposure; process repeatable as often as wanted.
Self-timer: Electronically controlled, 12-sec. delay time; timer action signaled by electronic sound.

Shutter Release Button: Electromagnetic shutter release; halfway depression activates exposure meter and turns on viewfinder display; full depression makes exposure; separate Light Metering Button provided; cable release socket.

Flash Synchronization: X-contact, 1/60 sec. synch speed.

Flash fittings: Hot shoe on top of pentaprism, with contacts for auto operation with accessory flash unit.

Auto flash operation: With accessory flash unit, camera automatically sets flash synch speed and brings on 1/60 sec. LED display when flash is ready to fire; flash unit controls light output to suit subject distance, aperture and film speed in use.

Camera Back: Back cover springs open when rewind crank is pulled up; can be detached and replaced with Fujica Photo Recorder data back.

Film Loading: Easy loading with multi-slit take-up spool.

Film Advance: Single-stroke lever, winds also in multiple strokes; 144° winding angle, 25° standoff.

Frame Counter: Auto-reset additive type; counter reverses with film rewind action; no frames advanced during multiple exposure operation.

Film Rewind: By rewind button and crank; button resets itself when rewind is completed.

Power Source: One 6-volt silver oxide battery (JIS-4G13, Eveready No. 544, Mallory PX28), or alkaline-manganese battery (Eveready No. 537); half-year battery life under normal use.

Battery check: By LED viewfinder display: red LED at "B" position blinks to show insufficient battery power.

Power switch: Pulling out lever next to film speed dial readies camera for operation; self-timer operated by same lever.

Dimensions: 135 × 86 × 54mm (5-5/16 × 3-3/8 × 2-1/8 in.) (body alone);
135 × 86 × 87mm (5-5/16 × 3-3/8 × 3-3/8 in.) (with 50mm f/1.6 lens).

Weight: 525g (18.5 oz.) (body alone); 695g (24.5 oz.) (with 50mm f/1.6 lens).

Accessories: Hard case, strap, lens cap.

Optional Accessories: Fujica Auto Winder X, Fujica Auto Strobe AZ, Fujica Auto Strobe 300X, Fujica Photo Recorder, Fujica Mount Adapter X-D, Fujica Mount Adapter X-S, Fujica Auto Extension Tube X25, Fujica Auto Extension Tube X50, Fujica Auto Bellows X, Fujica Slide Copier X, Fujica Microscope Adapter X, Fujica Macrocincope X, Fujica Reverse Adapter X, Fujica Focusing Rail X, Fujica Right-Angle Finder, Fujica Eyesight Adjustment Lenses, Fujica Eyecup, Fujica Close-up Lens, Fujica Lens Hood 55, 2X Auto Tele-converter Lens X DM, Carrying Case for Fujica Cameras.

FUJICA AX-3 SPECIFICATIONS

- Type:** 35mm single-lens reflex aperture-priority automatic exposure camera with electronically controlled focal plane shutter.
- Picture Size:** 24 × 36mm.
- Exposure Modes:** Aperture-priority AE, stopped-down AE, electronic flash AE, fully metered manual.
- Standard Lenses:** X-Fujinon 50mm f/1.6 DM. X-Fujinon 55mm f/1.6 DM. X-Fujinon-Z 43mm — 75mm f/3.5 — 4.5 DM.
- Lens Mount:** Fujica-X bayonet; 65° turning angle; flange back 43.5mm.
- Viewfinder:** Fixed eye-level pentaprism, silver-coated.
Field of view: 92% vertical and horizontal.
Magnification: 0.86x (with 50mm lens at infinity).
Focusing: 3-way system (split image, microprism, ground glass).
Mirror: Quick-return mirror, surface-treated for increased light reflection.
Eye-piece shutter: Built-in, lever-operated.

Viewfinder Information: LED display and aperture window.

Indicators: LED shutter speeds indicator (with scale), aperture readout window, over/under-exposure warning, battery warning.

Activation of display: Viewfinder display activated by halfway pressure on shutter release button, with main power switch on.

Auto Exposure System: Electronically controlled.

Exposure meter: Through-the-lens (TTL) center-weighted averaging meter, with silicon photocells.

Metering range: EV 0 — 18 (2 sec. at f/1.4 — 1/1000 sec. at f/16, ASA 100/21 DIN).

Film speeds: ASA 12 — 3200 (12 — 36 DIN).

AE lock: With shutter speed dial on "AEL," pushing halfway down on shutter release freezes meter reading, locks it in memory.

Exposure compensation: Up to ±1 f-stop steplessly (click-stopped in 1/3 steps); by film speed dial.

- Stop-down button:** Lens diaphragm closed down while pressure is kept on the button.
- Manual Exposure:** Full metering capability, with LED indication of selected shutter speed, and proper shutter speed.
- Shutter:** Electronically controlled cloth focal plane shutter; oil-less metal used in critical friction points.
- Speed range:** 2 sec. to 1/1000 sec. plus B.
- Multiple exposure:** Working film advance lever while pushing on "R" (for Rewind) button primes shutter for multiple exposure; process repeatable as often as wanted.
- Self-timer:** Electronically controlled, 12-sec. delay time; timer action signaled by electronic sound.
- Shutter Release Button:** Electromagnetic shutter release; halfway depression activates exposure meter and turns on viewfinder display; full depression makes exposure; with cable release socket.
- Flash synchronization:** X-contact, 1/60 sec. synch speed.
- Flash fittings:** Hot shoe on top of pentaprism, with contacts for auto operation with accessory flash unit.
- Auto flash operation:** With accessory flash unit, camera automatically sets flash synch speed and brings on 1/60 sec. LED display when flash is ready to fire; flash unit controls light output to suit subject distance, aperture and film speed in use.
- Camera Back:** Back cover springs open when rewind crank is pulled up; can be detached and replaced with Fujica Photo Recorder data back.
- Film Loading:** Easy loading with multi-slit take-up spool.
- Film Advance:** Single-stroke lever, winds also in multiple strokes; 144° winding angle, 25° standoff.
- Frame Counter:** Auto-reset additive type; counter reverses with film rewind action; no frames advanced during multiple exposure operation.
- Film Rewind:** By rewind button and crank; button resets itself when rewind is completed.
- Power Source:** One 6-volt silver oxide battery (JIS-4G13, Eveready No. 544, Mallory PX28), or alkaline-manganese battery (Eveready No. 537); half-year battery life under normal use.
- Battery check:** By LED viewfinder display: red LED at "B" position blinks to show insufficient battery power.
- Power switch:** Pulling out lever next to film speed dial readies camera for operation; self-timer operated by same lever.
- Dimensions:** 135 × 86 × 54mm (5-5/16 × 3-3/8 × 2-1/8 in.) (body alone); 135 × 86 × 87mm (5-5/16 × 3-3/8 × 3-3/8 in.) (with 50mm f/1.6 lens).
- Weight:** 520g (18.2 oz.) (body alone); 690g (24.3 oz.) (with 50mm f/1.6 lens).
- Accessories:** Hard case, strap, lens cap.
- Optional Accessories:** Same as listed under AX-5

FUJICA AX-1 SPECIFICATIONS

- Type:** 35mm single-lens reflex aperture-priority automatic exposure camera with electronically controlled focal plane shutter.
- Picture Size:** 24 × 36mm.
- Exposure Modes:** Aperture-priority AE, electronic flash AE, plus manual with "B" and 1/60 sec.
- Standard Lenses:** X-Fujinon 50mm f/1.6 DM. X-Fujinon 55mm f/1.6 DM. X-Fujinon 55mm f/2.2.
- Lens Mount:** Fujica-X bayonet; 65° turning angle; flange back 43.5mm.
- Viewfinder:** Fixed eye-level pentaprism, silver-coated.
- Field of view:** 92% vertical and horizontal.
- Magnification:** 0.86x (with 50mm lens at infinity).
- Focusing:** 3-way system (split image, microprism, ground glass).
- Mirror:** Quick-return mirror, surface-treated for increased light reflection.
- Eyepiece shutter:** By fitting eyepiece cap.
- Viewfinder Information:** By LED display.
- Indicators:** LED indication of speeds (with scale), over/under-exposure warning, battery warning.
- Activation of display:** Viewfinder display activated by halfway pressure on shutter release button, with main power switch on.
- Auto Exposure System:** Electronically controlled.
- Exposure meter:** Through-the-lens (TTL) center-weighted averaging meter, with silicon photocells.
- Metering range:** EV 2 — 18 (1/2 sec. at f/1.4 — 1/1000 sec. at f/16, ASA 100/21 DIN).
- Film speeds:** ASA 25 — 3200 (15 — 36 DIN).
- AE lock:** With control dial set for "AE," pushing halfway down on shutter release freezes meter reading, locks it in memory.
- Exposure compensation:** Up to ±1 f-stop steplessly (click-stopped in 1/3 steps); by film speed dial.
- Stop-down button:** Lens diaphragm closed down while pressure is kept on the button.
- Shutter:** Electronically controlled cloth focal plane shutter, oil-less metal used in critical friction points.
- Speed range:** 1/2 sec. to 1/1000 sec. plus "B" and 1/60 sec. manual speeds.
- Multiple exposure:** Working film advance lever while pushing on "R" (for Rewind) button primes shutter for multiple exposure; process repeatable as often as wanted.
- Self-timer:** Electronically controlled, 12-sec. delay time; timer action signaled by electronic sound.
- Shutter Release Button:** Electromagnetic shutter release; halfway depression activates exposure meter and turns on viewfinder display; full depression makes exposure; with cable release socket.
- Flash Synchronization:** X-contact, 1/60 sec. synch speed.
- Flash fittings:** Hot shoe on top of pentaprism, with contacts for auto operation with accessory flash unit.
- Auto flash operation:** With accessory flash unit, camera automatically sets flash synch speed and brings on 1/60 sec. LED display when flash is ready to fire; flash unit controls light output to suit subject distance, aperture and film speed in use.
- Camera Back:** Back cover springs open when rewind crank is pulled up; can be detached and replaced with Fujica Photo Recorder data back.
- Film Loading:** Easy loading with multi-slit take-up spool.
- Film Advance:** Single-stroke lever, winds also in multiple strokes; 144° winding angle, 25° standoff.
- Frame Counter:** Auto-reset additive type; counter reverses with film rewind action; no frames advanced during multiple exposure operation.
- Film Rewind:** By rewind button and crank; button resets itself when rewind is completed.
- Power Source:** One 6-volt silver oxide battery (JIS-4G13, Eveready No. 544, Mallory PX28), or alkaline-manganese battery (Eveready No. 537); half-year battery life under normal use.
- Battery check:** Red battery check LED provided in viewfinder, next to shutter speed LEDs; blinking LED means insufficient battery power.
- Power switch:** Camera draws power when shutter speed dial is set for "AE," "60X" and "B"; power turned off at "OFF" position.
- Dimensions:** 135 × 86 × 54mm (5-5/16 × 3-3/8 × 2-1/8 in.) (body alone); 135 × 86 × 87mm (5-5/16 × 3-3/8 × 3-3/8 in.) (with 50mm f/1.6 lens).
- Weight:** 500g (17.5 oz.) (body alone); 675g (23.7 oz.) (with 50mm f/1.6 lens).
- Accessories:** Hard case, strap, lens cap, viewfinder eyepiece cap.
- Optional Accessories:** Same as listed under AX-5

FUJICA STX-1 SPECIFICATIONS

- Type:** 35mm single-lens reflex camera with focal plane shutter.
- Standard Lens:** X-Fujinon 55mm f/2.2.
- Lens Mount:** Fujica-X bayonet; 65° turning angle; flange back 43.5mm.
- Shutter:** Cloth focal-plane shutter; B, 1/2 — 1/700 sec.; X synch contact; Built-in self-timer; Hot shoe.
- Viewfinder:** Pentaprism with Fresnel lens; 0.96X magnification (55mm f/2.2 lens); 3-way focusing with microprism, split-image and ground glass. Exposure meter and shutter speed indicator visible in viewfinder.
- Mirror:** Quick-return mirror, surface-treated for increased light reflection.
- Exposure Meter:** Through-the-lens (TTL) full aperture center-weighted averaging meter. Metering range: EV 2 — 17-2/3 (1/2 sec. at f/1.4 — 1/700 sec. at f/16, ASA 100/21 DIN); Film speeds: ASA 25 — 3200 (15 — 36 DIN) (in increments of 1/3rd step); Power source: 1.5V × 2 silver batteries, Eveready S-76E, UCAR S-76E, Mallory MS-76H.

- Film Advance:** Single-stroke lever action, 140° winding angle with 20° latitude; easy loading; self-cocking shutter; provision for double exposure prevention; automatic-reset frame counter (additive type).
- Dimensions:** 133 × 86 × 88mm (5-15/64 × 3-25/64 × 3-15/32 in.) (with 55mm f/2.2 normal lens).
- Weight:** 690g (24.2 oz.) (with 55mm f/2.2 normal lens) 550g (19.3 oz.) (body alone)

Accessories: Hard case, strap, lens cap.

Optional Accessories: Fujica Auto Strobe 300X, Fujica Auto Strobe AZ, Fujica Mount Adapter X-D and X-S, Fujica Auto Extension Tube X25, Fujica Auto Extension Tube X50, Fujica Auto Bellows X, Fujica Slide Copier X, Fujica Microscope Adapter X, Fujica Macrocincopey X, Fujica Reverse Adapter X, Fujica Focusing Rail X, Fujica Eyesight Adjustment Lenses, Fujica Right-Angle Finder, Fujica Close-up Lens, Fujica Eyecup, Fujica Lens Hood 55, 2X Auto Tele-converter Lens X DM, Carrying Case for Fujica Cameras.

FUJICA AUTO WINDER X SPECIFICATIONS

- Winding Speed:** Approx. 0.5 sec. (up to two frames a second during continuous operation).
- Operation:** By shutter release button on camera body, with winder switch turned on.
- Coupled Shutter Speed Range:** 2 sec — 1/1000 sec., plus B, for both continuous and single-frame modes.
- Frame Counter:** Camera frame counter coupled to winder action.
- Winder Action Check:** By red LED above winder switch: LED lights when film is being advanced properly.
- Automatic Stop Circuit:** Winder stops automatically when film is finished or when batteries lose working voltage.
- Power Source:** Four AA-size (penlight) batteries. Minimum winding capacity: 20 36-exposure rolls at normal temperature (carbon-zinc batteries).
- Attachment to Camera:** By thumbscrew that fits in Camera's tripod socket.
- Dimensions:** 137 × 36 × 37.5mm. (5-3/8 × 1-7/16 × 1-15/32 in.)
- Weight:** 250g (8.8 oz.) (without batteries).

FUJICA AUTO STROBO 300 X SPECIFICATIONS

- Type:** Electronic flash with series control auto flash operation.
- Camera Fitting:** Clip-on in camera hot shoe; locking provision.
- Guide Number:** 30 (ASA 100-meter) Two flash tubes are used in bounce flash, with these guide numbers:
Main flash unit: 25 (ASA 100/ meter)
Sub-flash unit: 6 (ASA 100/meter)
- Light Coverage:** Corresponds to angles of view of 35mm lens with 35mm film format.
With Wide Adapter, illumination covers picture area of 28mm lens.
- Recycling Time:** 7 sec. (with fresh set of alkaline-manganese batteries).
5 sec. (under similar conditions with nickel-cadmium batteries).
- Light Quality:** Daylight type.
- Number of Flashes:** 150 flashes with AA-size (penlight) alkaline-manganese batteries.
- Aperture Selection:** Three auto apertures, color coded, plus manual.
With ASA 100 film (21DIN), color aperture setting work with following lens apertures:
Red: f/2.8, Green: f/5.6, Yellow: f/11
- Flash Distance Range:** Red Mark: 1.5 — 10.7m (5 — 36 ft.)
Green mark: 1.0 — 5.3m (3.3 — 18ft.)
Yellow mark: 0.8 — 2.7m (2.7 — 9 ft.)
- Bounce Flash:** Flash head tilts from 0° to 90°; turning flash head up automatically switches on sub-unit, with bounce flash always working as a two-tube system.
- Power Source:** Four AA-size (penlight) batteries.
- Film Speeds:** ASA 25 — ASA 400 (15 — 27 DIN); film speed to be set manually on flash unit.
- Dimensions:** 85 × 82 × 125mm. (3-11/32 × 3-15/64 × 4-59/64 in.)
- Weight:** 300g (10.5 oz.)

FUJICA AUTO STROBO AZ SPECIFICATIONS

- Type:** Electronic flash with series circuit for automatic light control.
- Camera Fitting:** Special contact for clip-on mounting with provision for locking.
- Guide Number:** 17 (ASA 100-meter)
- Light Angle:** 42° vertically and 59° horizontally; provides coverage for 35mm format with 35mm lens.
- Recycling Time:** 7 sec. with AM-3 (alkali-manganese) batteries.
- Number of Flashes:** 300 with AM-3 (alkali-manganese) batteries.
- Light Quality:** Daylight
- Film Speed:** ASA 25 — 800; film speed is automatically sensed and flash output adjusted accordingly.
- Power Source:** Four penlight batteries.
- Dimensions:** 55 × 65 × 106mm. (2-11/64 × 2-9/16 × 4-11/64 in.)
- Weight:** 190g (6.7 oz.)

FUJICA PHOTO RECORDER SPECIFICATIONS

- Dimensions (H × D × W):** 15 × 49 × 105mm. (19/32 × 1-59/64 × 4-9/64 in.)
- Memory Plate Area:** 40 × 14mm. (1-37/64 × 35/64 in.)
- Film Recording Area:** 8 × 2.8mm (5/16 × 1/8 in.) (1/5 of memory plate area).
- Film Recording Position:** Lower lefthand corner (approx. 3mm (1/8 in.) from frame lines).
- Memory Plate Type:** Erasable memory plate (to be replaced with new plate at appropriate intervals).
- Power Source:** Two AAA-size (alkaline-manganese) batteries.



FUJI PHOTO FILM CO., LTD.

26-30, NISHIAZABU 2-CHOME,
MINATO-KU, TOKYO 106, JAPAN

FUJI FILM ABROAD:
IN NORTH AMERICA:
NEW YORK, HONOLULU
IN EUROPE:
DUSSELDORF, LONDON
IN SOUTH AMERICA:
SAO PAULO

IN ASIA:
HONG KONG, SINGAPORE,
BANGKOK, TAIPEI, SEOUL,
MANILA