

KODAK





*In selecting a camera,
consider these four points :*

**KODAKS
AND BROWNIES**

THE PICTURE SIZE that appeals to you most . . .

THE TYPE OF CAMERA YOU PREFER . . . box or folding . . .

THE VARIETY OF PICTURES you want, and the conditions under which you expect to take them . . .

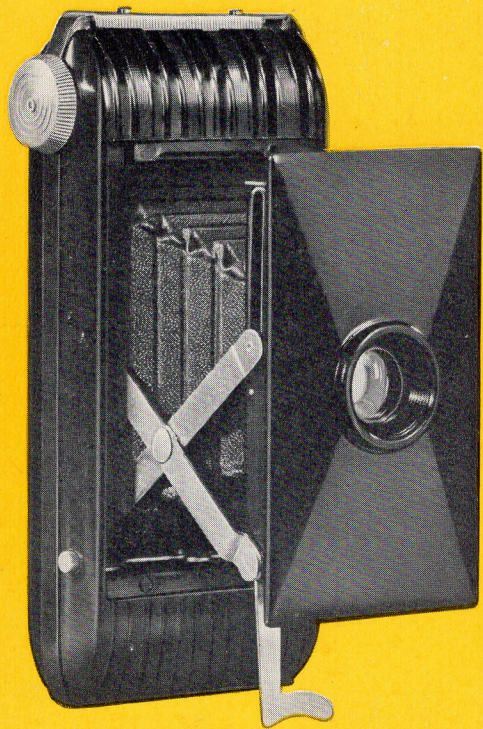
THE PRICE you want to pay. . . . Your dealer will be glad to help you make your selection.

For complete information on Kodak Film and photographic accessories, ask for the booklet, *Kodak Picture-Making Aids*.

Prices in this catalogue are subject to change without notice

CANADIAN KODAK CO., LIMITED, TORONTO, ONTARIO

(November, 1937)



Jiffy Kodak V.P. "Vest pocket" Kodaks are long-time favorites because of their great convenience . . . their reliable picture quality . . . their moderate cost. In this latest version, ultra-modern molded construction and the popular "Jiffy" action have been thrown in for good measure. Jiffy Kodak V.P. is smart and swift. Press a button and the lens snaps out into position. Press the release and you've made the picture, without focusing or other adjustment. Here you have the famous five-dollar Kodak completely restyled . . . and a more completely satisfying picture-maker than ever before.

DETAILS Picture size, $1\frac{5}{8} \times 2\frac{1}{2}$ inches. Permanent "built-in" glossy finish, with ornamental ribbing. Removable back. Weight, 10 ounces. Fixed focus. Kodak Doubler lens, deeply recessed for protection. Built-in shutter, with 2 release triggers. Aperture can be stopped down to f.16. Folding direct-view eye-level finder.

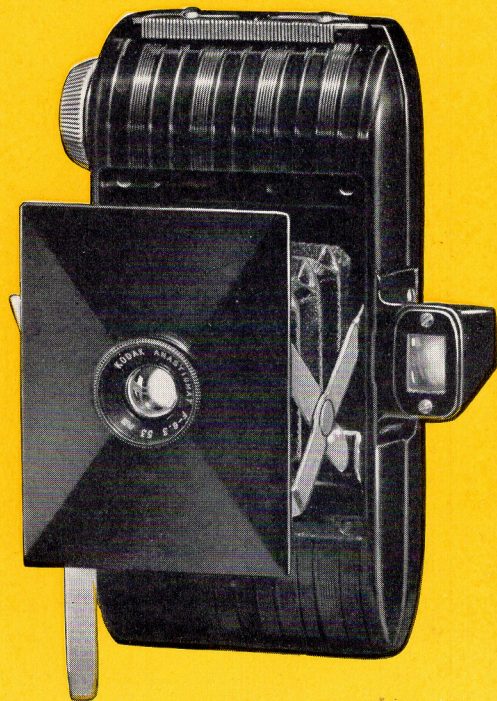
PRICES Jiffy Kodak V. P., \$5. Cowhide carrying case, \$1.65. No. 127 Kodak Film (8 exposures): Regular N.C., \$.20; Verichrome, \$.25; "SS" or Panatomic, \$.30.

J I F F Y K O D A K V . P .

Kodak Bantam Though it is so small that it fits the palm of the hand, Kodak Bantam leads to good pictures larger than itself. Modern photo-finishing methods give you these big prints at reasonable cost. Film cost, too, is low . . . 20 cents for an eight-exposure roll of Kodak Panatomic. This capable film, plus fixed focus and fixed shutter speed, cancels ordinary exposure problems. Besides, you don't have to watch the window when winding film: a special device centres exposures . . . speeds up your picture-making. Smallest of all Kodaks, the Bantam is also one of the most intriguing . . . especially the versatile *f.6.3* model.

DETAILS Standard enlargement size, $2\frac{3}{4} \times 4$ inches. Molded body, $4\frac{3}{8} \times 2\frac{1}{4} \times 1$ inch. Weight .8 ounces. *F.6.3* model has Kodak Anastigmat *f.6.3* lens, snapshot and time actions, optical eye-level finder*. Doublet model has Kodak Doublet lens, snapshot and bulb actions, folding eye-level finder.

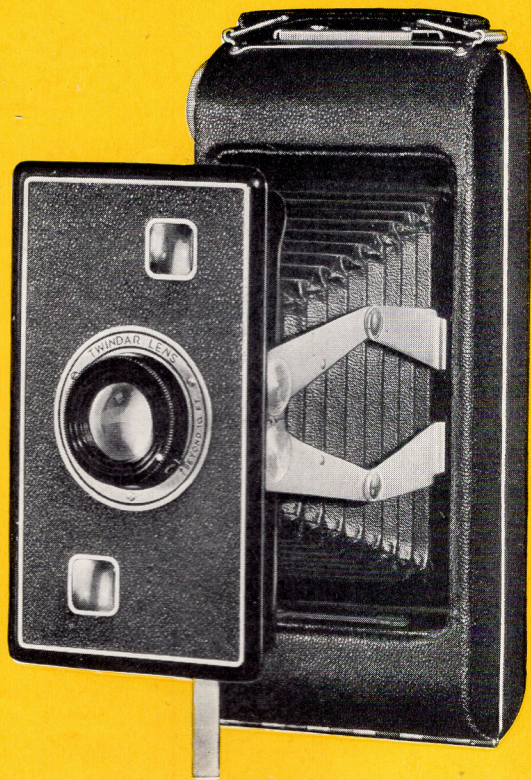
PRICES *Kodak Bantam, f.6.3*, \$10.50. *Kodak Bantam, Doublet*, \$6.50. Case for either model, \$1.50. Kodak Panatomic Film No. F828 (8 exposures), \$.20.

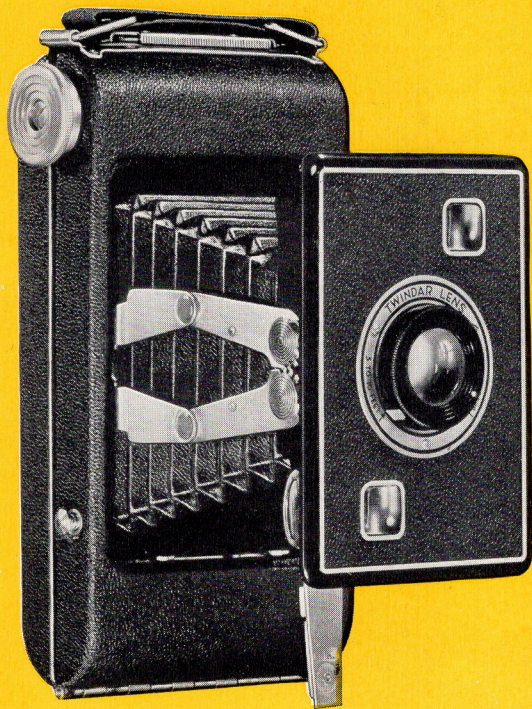


Jiffy Kodaks Six-16 and Six-20, Series II

There is no secret about the popularity of Jiffy Kodaks. They have all the style of the folding camera plus the simplicity of a box model. Press a button: "Pop"—the Jiffy opens. Press another: "Click"—it gets the picture. Jiffy operation is as simple as that. It's so simple, in fact, that anyone can master it in a minute. The fast-moving mechanism comes in a camera body notable both for its compactness and its new finish of modish pin-grain material enhanced by lacquered, plated, and natural metal trimmings.

Good pictures come easily with a Jiffy Kodak, Series II. The brilliant finders "pick out" the subject clearly . . . instantly. The Twindar lens assures sharp focus for either near or distant views. The sturdy built-in shutter is ready at a moment's notice for "snap" or time exposure. And two other points must not be overlooked—Jiffy Kodaks make not only good pictures, but *big*





pictures; and they cost little to buy. Simplest folding cameras ever devised, their happy combination of qualities makes them irresistible to many thousands of people.

DETAILS Picture sizes: Six-16, $2\frac{1}{2} \times 4\frac{1}{4}$ inches; Six-20, $2\frac{1}{4} \times 3\frac{1}{4}$ inches. Camera opened by slight pressure on a button, which releases spring-actuated erecting arms. Twindar lens has revolving mount which can be turned to either of two positive stops, for distances from 5 to 10 feet, and beyond 10 feet. Built-in shutter with snapshot and time actions, three apertures, and finger release. Crowned, brilliant waist-level finders for vertical and horizontal pictures. Swinging foot supports camera for time exposures in either vertical or horizontal position. Black pin-grain covering. Closely fitting hinged back. Swinging cover over ruby window, to protect films of high sensitivity. Black japanned metal cap (extra) protects lens from dust, sand, and breakage.

PRICES *Jiffy Kodak Six-16, Series II*, \$10.25. Leather Case, \$2.20. Kodak Film No. 616 (8 exposures): Verichrome, \$.35; "SS" or Panatomic, \$.40. Lens Cap, \$.21.

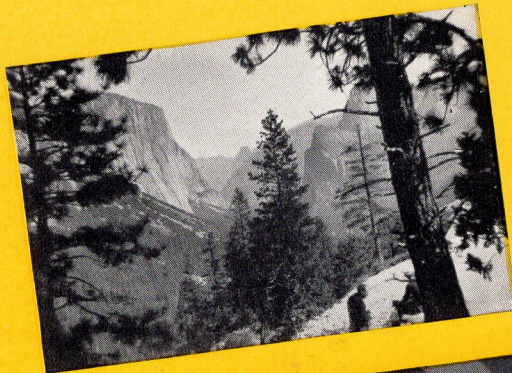
Jiffy Kodak Six-20, Series II, \$9.25. Leather Case, \$1.95. Kodak Film No. 620 (8 exposures): Verichrome, \$.30; "SS" or Panatomic, \$.35. Lens Cap, \$.21.

JIFFY KODAK SIX-20, SERIES II

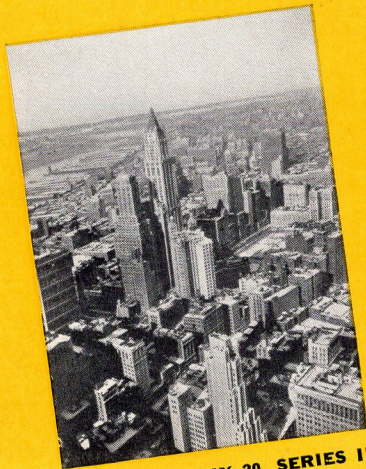


KODAK SENIOR SIX-16





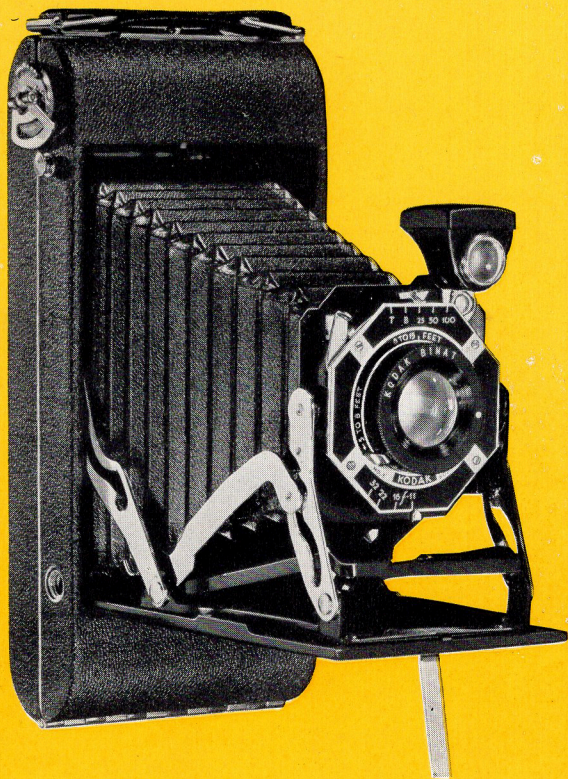
JEFFY KODAK V.P.



KODAK DUO SIX-20, SERIES II



KODAK BANTAM (standard 2 3/4 x 4 enlargement)



Kodak Juniors Six-16 and Six-20, Series II

One fact about these Kodaks stands out above all others: they offer you the opportunity of getting a fine, fast lens (Kodak Anastigmat $f.6.3$) at an extremely moderate price. Thus equipped, Kodak Juniors make snapshots even on cloudy days, or indoors at night with the aid of Kodak "SS" Film and Mazda Photoflood bulbs. The Doublet and single-lens models, on their part, are thoroughly reliable for less exacting picture situations.

Any Kodak Junior, Series II, gets into action quickly and easily. One pull on the bed latch snaps the lens out into picture-taking position. Once the camera is open you can sight through either the waist-level or the eye-level finder, depending upon your subject or upon the angle of view you prefer. When the picture has been made, light finger pressure on a metal bar releases the bed, and the camera is closed as quickly as it was opened.

Swiftness and convenience of operation are topped off by a trim, new finish. There have been other Kodak Juniors, but, more than ever, these models represent "a lot for a little."

DETAILS Picture sizes: Six-16, $2\frac{1}{2} \times 4\frac{1}{4}$ inches; Six-20, $2\frac{1}{4} \times 3\frac{1}{4}$ inches. Self-erecting front—one pull opens camera and erects lens into position. Two tripod sockets. Single-lens models have fixed focus. *F.6.3* and Bimat models, focus adjustable by revolving lens mount.

PRICES *Kodak Junior Six-16, Series II*: with Kodak Anastigmat *f.6.3* lens, Kodex shutter (speeds to 1/100 second), \$16.25; with Bimat lens, Kodon shutter (speeds to 1/100 second), \$14; with single lens, Kodal shutter (time, snapshot settings), \$11.25. Cases: soft leather, \$2.20; lined grain leather, \$3.35. Kodak Film No. 616 (8 exposures): Verichrome, \$.35; "SS" or Panatomic, \$.40.

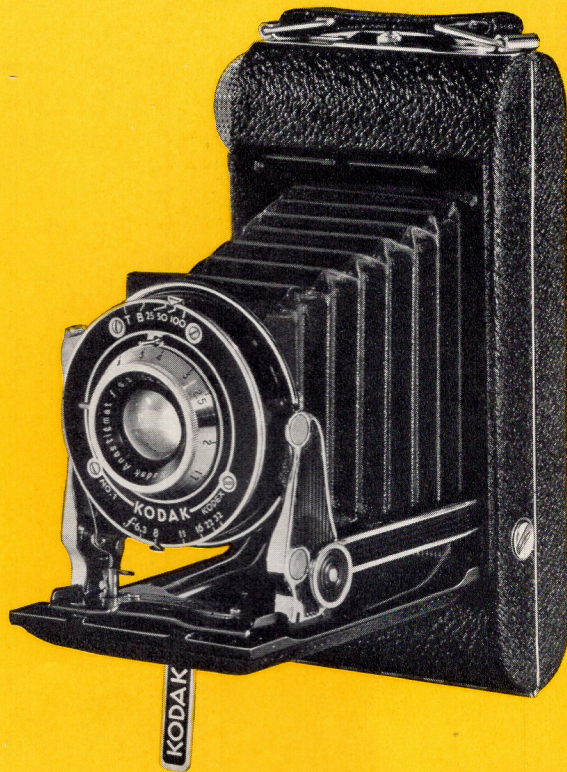
Kodak Junior Six-20, Series II: with Kodak Anastigmat *f.6.3* lens, Kodon shutter (speeds to 1/100 second), \$14.50; with Bimat lens, Kodon shutter (speeds to 1/100 second), \$12; with single lens, Kodo shutter (time and instantaneous settings), \$9.50. Carrying cases: soft leather, \$1.95; lined grain leather, \$2.80. Kodak Film No. 620 (8 exposures): Verichrome, \$.30; "SS" or Panatomic, \$.35.



Kodak Seniors Six-16 and Six-20 In these new Kodaks is presented a group of very fine yet moderately priced cameras combining latest design and outstanding ability. They are trim and businesslike in looks . . . swift to get into action . . . satisfyingly certain in their results. They have a new shutter release located on the camera body. Utilizing this device, the picture-taker holds the camera firmly in both hands, sights through the optical direct-view eye-level finder, releases the shutter with the touch of a finger. This technique minimizes camera movement and gets the picture from eye level at the instant the scene is "right."

The Seniors open by means of a push button; and pressure on a one-finger release . . . another new feature . . . allows the camera to be closed in one simple motion. Both sizes come with a choice of equipment, topped by the Kodak Anastigmat $f.4.5$ lens and Kodamatic shutter.

Ultra-modern in style, the Seniors have the





fundamental design that spells excellent pictures. They are the "hit" of the year in fine cameras.

DETAILS Picture sizes: Six-16, $2\frac{1}{2} \times 4\frac{1}{4}$ inches; Six-20, $2\frac{1}{4} \times 3\frac{1}{4}$ inches. Self-erecting front. Kodex shutter has 3 speeds to $1/100$ second. Kodamatic shutter has 5 speeds to $1/200$ second, and built-in delayed-action timer. Bimat models have simple three-position focusing mounts. Revolving mounts on other models can be set from $3\frac{1}{2}$ feet to infinity. Body shutter-release button. Handy knurled film-winding knob. Swing-out film supply bracket. Sliding film window. Bar bed-release. Vertical and horizontal tripod sockets.

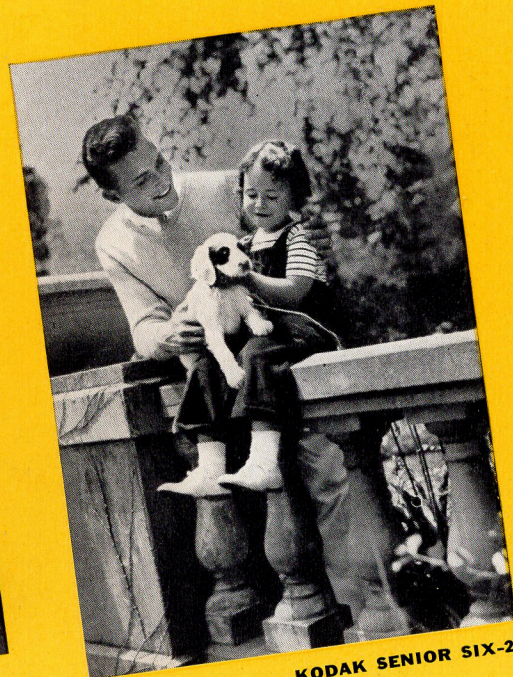
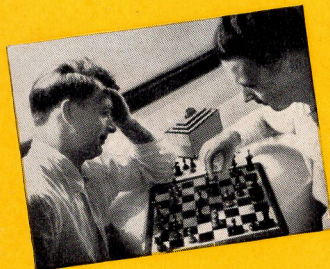
PRICES *Kodak Senior Six-16*: with Kodak Anastigmat *f.4.5* lens, Kodamatic shutter, \$35; with Kodak Anastigmat *f.6.3* lens, Kodex shutter, \$23; with Kodak Bimat lens, Kodex shutter, \$18.25. Lined grain leather case \$3.35. Kodak Film No. 616 (8 exposures): Verichrome, \$.35; "SS" or Panatomic, \$.40.

Kodak Senior Six-20: with Kodak Anastigmat *f.4.5* lens, Kodamatic shutter, \$31; with Kodak Anastigmat *f.6.3* lens, Kodex shutter, \$20.50; with Kodak Bimat lens, Kodex shutter, \$16.75. Lined grain leather case, \$2.80. Kodak Film No. 620 (8 exposures): Verichrome, \$.30; "SS" or Panatomic, \$.35.

KODAK RECOMAR 18

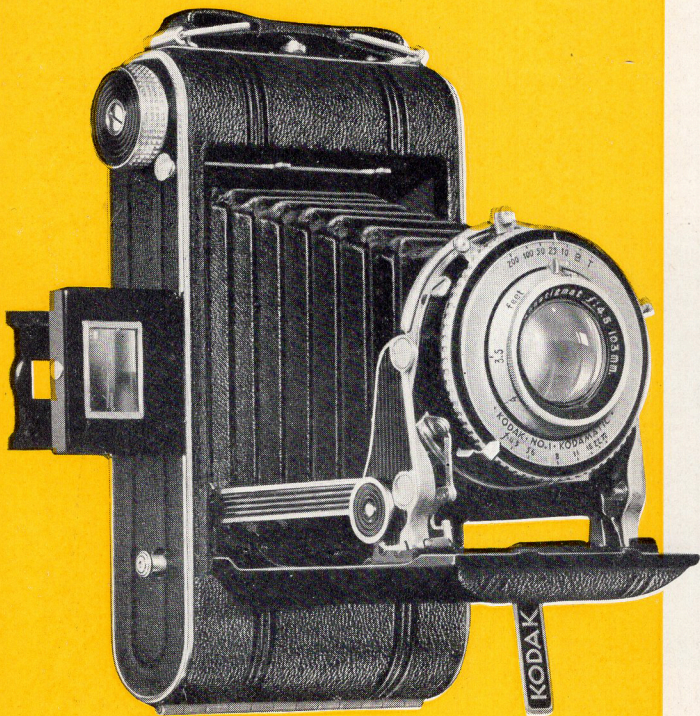


KODAK JUNIOR SIX-16, SERIES II



KODAK SPECIAL SIX-20

KODAK SENIOR SIX-20



Kodak Specials Six-16 and Six-20

Here is a real delight for camera enthusiasts who want equipment refined to the last detail. Six new Kodak Specials, all fitted with $f.4.5$ lenses and fast shutters, give discriminating picture-takers a chance to choose an instrument exactly suited to their needs and tastes. And they bring users a wealth of the latest developments in camera making.

Kodak Specials have a new folding optical eye-level finder. Together with the body shutter release, it affords the utmost in operating efficiency. Pressure on a button opens the camera, and a one-finger bed release permits quick closing. A knurled knob speeds up film winding. Case and back are special-quality aluminum. The covering is genuine pin-seal grain leather, set off by chromium and black lacquer.

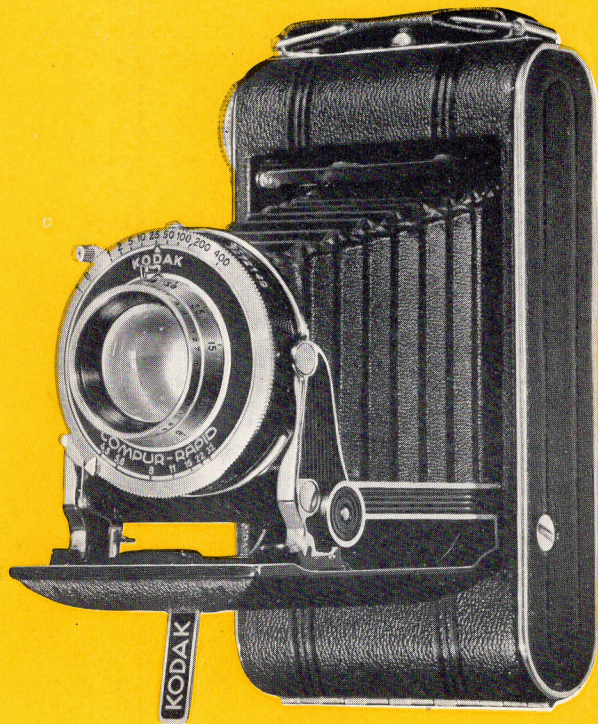
From start to finish, Kodak Specials are strictly *de luxe*, their refinements serving the prime purpose of providing full help for the

superb lenses and shutters. Exceptional picture-makers all, they reach their peak in models with the new, precise Kodak Anastigmat Special *f*.4.5 lens and Compur-Rapid shutter.

DETAILS Picture sizes: Six-16, 2 1/2 x 4 1/4 inches; Six-20, 2 1/4 x 3 1/4 inches. Body shutter release (also regular trigger release). Built-in self timer. Focusing by revolving lens mount (down to 3 1/2 feet on Six-20's, 4 feet on Six-16's). Kodamatic shutter has 5 speeds to 1/200; Compur-Rapid, 8 speeds to 1/400.

PRICES *Kodak Special Six-16*: with Kodak Anastigmat Special *f*.4.5 lens, Compur-Rapid shutter, \$53.50; with Kodak Anastigmat Special *f*.4.5 lens, Kodamatic shutter, \$45; with Kodak Anastigmat *f*.4.5 lens, Kodamatic shutter, \$40. Lined grain leather case, \$3.35. Kodak Film No. 616 (8 exposures): Verichrome, \$.35; "SS" or Panatomic, \$.40.

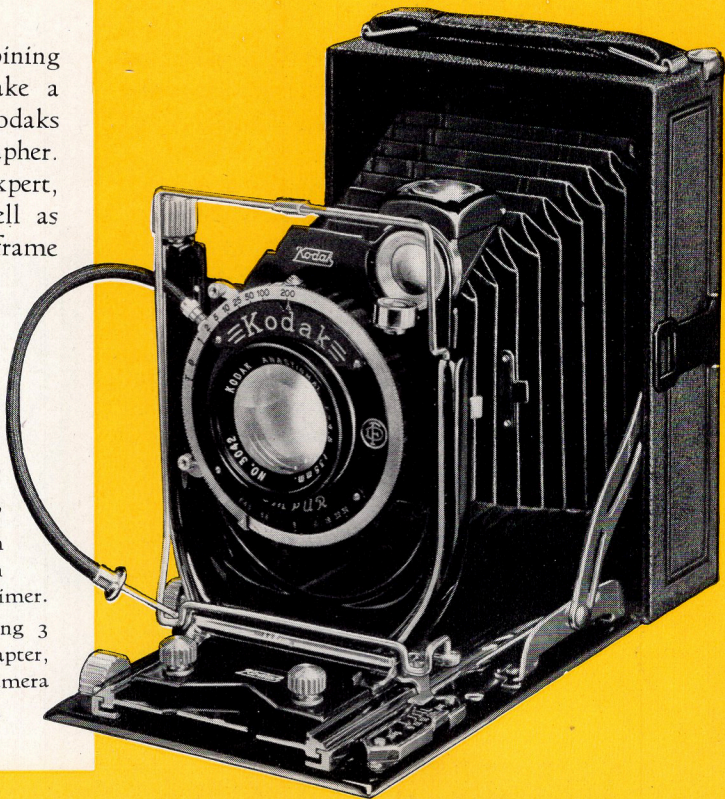
Kodak Special Six-20: with Kodak Anastigmat Special *f*.4.5 lens, Compur-Rapid shutter, \$50; with Kodak Anastigmat Special *f*.4.5 lens, Kodamatic shutter, \$41.50; with Kodak Anastigmat *f*.4.5 lens, Kodamatic shutter, \$36.50. Lined grain leather case, \$2.80. Kodak Film No. 620 (8 exposures): Verichrome, \$.30; "SS" or Panatomic, \$.35.

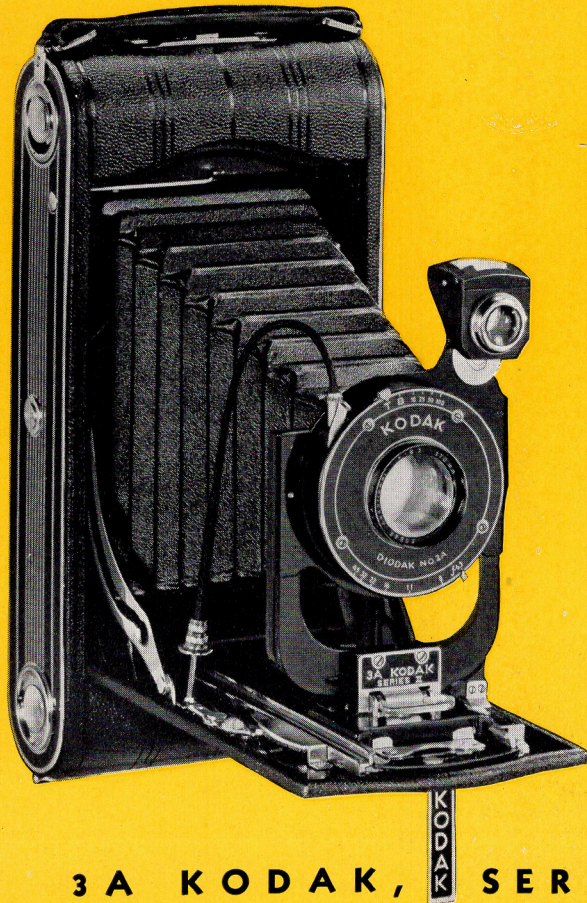


Kodak Recomars 18 and 33 Combining mechanical excellence with ability to take a great variety of negative materials, these Kodaks are admirably suited to the serious photographer. Their use is not, however, limited to the expert, for their refinements mean simple as well as varied picture-taking. They have both wire-frame eye-level and brilliant waist-level finders . . . focusing by rack-and-pinion or ground-glass back . . . double-extension bellows and bed. Their lens is the Kodak Anastigmat *f.4.5* . . . a triumph in optical design . . . their shutter the famous Compur. Sturdy, precise, they give a lifetime of first-class performance.

DETAILS Picture sizes and negative materials: "18"—2 1/4 x 3 1/4-inch film packs, 6.5 x 9-cm. cut film or plates; "33"—3 1/4 x 4 1/4-inch or 9 x 12-cm. film packs, 9 x 12-cm. cut film or plates. Built-in self timer.

PRICES "18," \$60.50; "33," \$71 (both including 3 combination plate and film holders, film pack adapter, cable release). Lined brown cowhide case for camera and accessories: for "18," \$5.65; for "33," \$6.15.

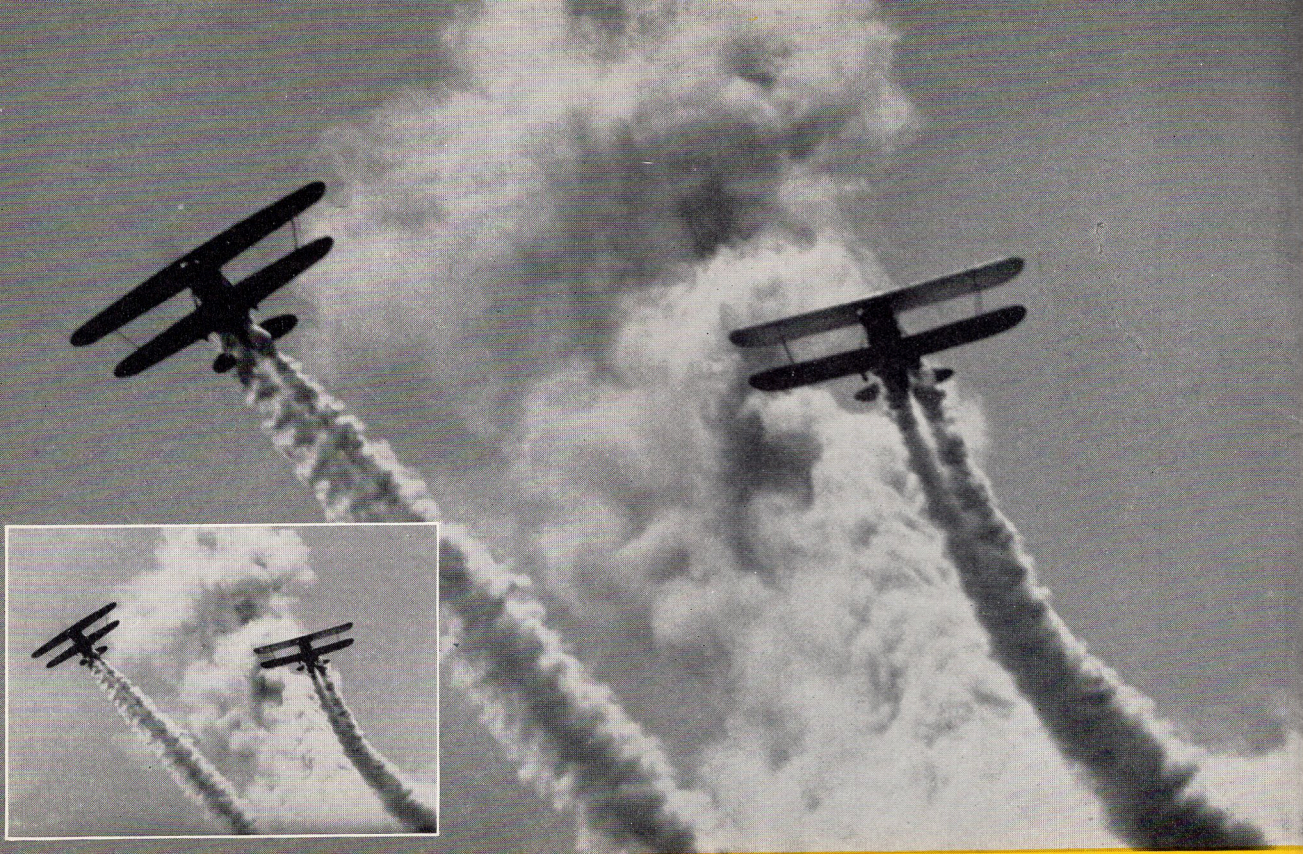




3A Kodak, Series II An ideal camera for people who want large pictures without the necessity of enlarging. With a 3A Kodak, Series II, you get pictures of full-post-card size . . . $3\frac{1}{4} \times 5\frac{1}{2}$ inches. The camera itself combines the beauty of chromium-and-black side panels, and creased cowhide covering, with full modern efficiency. Two high-grade lenses . . . Kodak Anastigmats $f.4.5$ and $f.6.3$. . . are available. Geared to shutters of corresponding excellence, both assure good pictures even under difficult conditions, the $f.4.5$ naturally having the wider scope. In performance as well as looks the 3A, Series II, is a noteworthy big-picture camera.

DETAILS Picture size, $3\frac{1}{4} \times 5\frac{1}{2}$ inches. $F.4.5$ model: both waist-level and eye-level finders; rising, falling front.

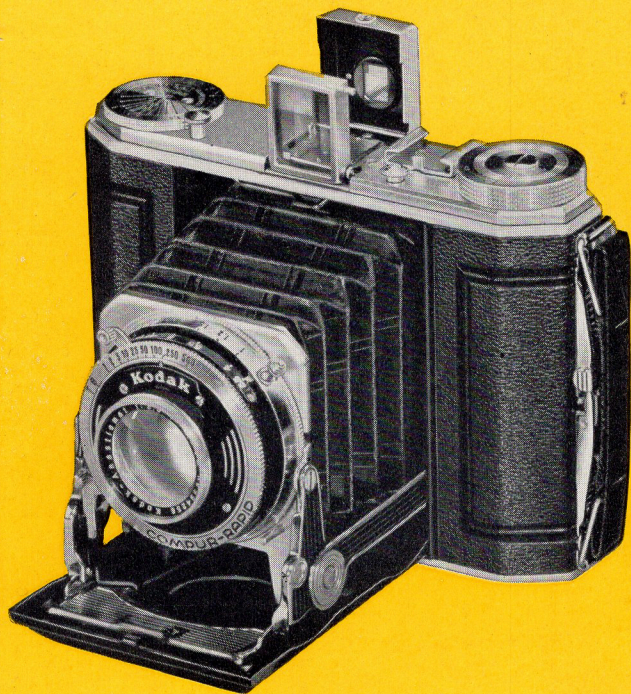
PRICES 3A Kodak, Series II, with Kodak Anastigmat $f.4.5$ lens, Compur shutter (8 speeds to $1/200$ second), \$80; with Kodak Anastigmat $f.6.3$ lens, Diodak shutter (4 speeds to $1/100$ second), \$50. Lined grain leather case, \$6.40. Kodak Film No. 122 (6 exposures): Verichrome, \$.55; "SS" or Panatomic, \$.65.



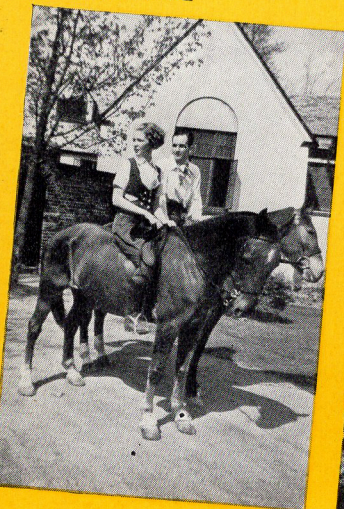
Kodak Duo Six-20, Series II Though built with the smart compactness of a true "miniature," the Duo makes pictures $1\frac{5}{8} \times 2\frac{1}{4}$ inches... album size. They may be enlarged, of course, for the Kodak Anastigmat $f.3.5$ lens and Compur-Rapid shutter give negatives almost limitless sharp detail. As for scope... the Duo is as sure of itself in dealing with nighttime pictures and action shots as it is in ordinary snapshooting. Carefully finished, and provided with such refinements as the body shutter release, it is a brilliant example of photographic craftsmanship.

DETAILS Picture size, $1\frac{5}{8} \times 2\frac{1}{4}$ inches. Button release opens camera, erects Kodak Anastigmat $f.3.5$ lens. Compur-Rapid shutter (9 speeds to $1/500$ second). Body shutter release (also regular finger release). Focusing from $3\frac{1}{2}$ feet to infinity by revolving entire lens-and-shutter mount. Diaphragm settings from $f.3.5$ to $f.22$. Rotating depth-of-focus scale. Fine-grained, tooled black leather covering. Satin chrome trimmings.

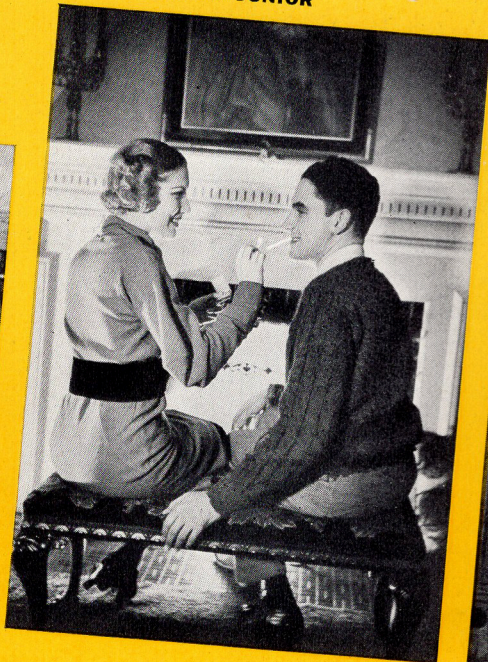
PRICES Kodak Duo Six-20, Series II, \$61. Brown cowhide carrying case, \$7.75. Kodak Film No. 620 (16 exposures): Verichrome, \$.30; "SS" or Panatomic, \$.35.



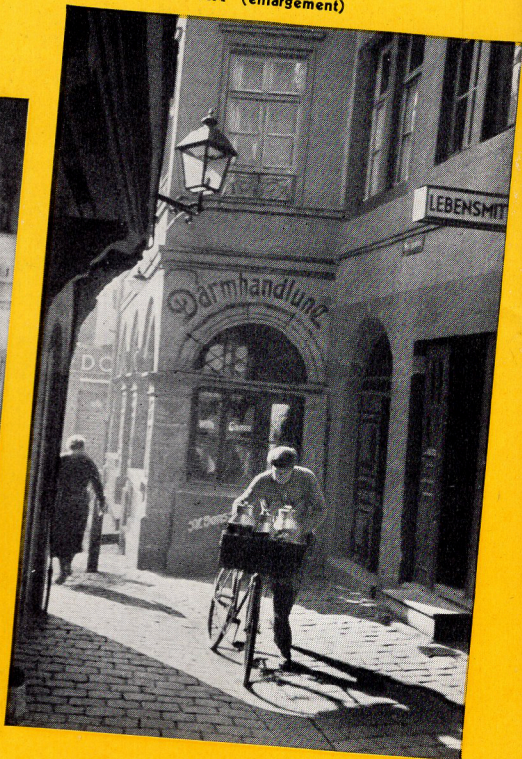
BABY BROWNIE



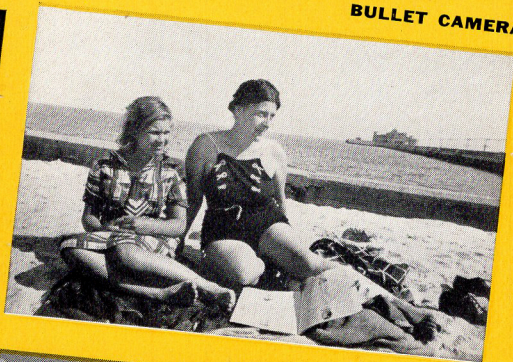
SIX-20 BROWNIE JUNIOR



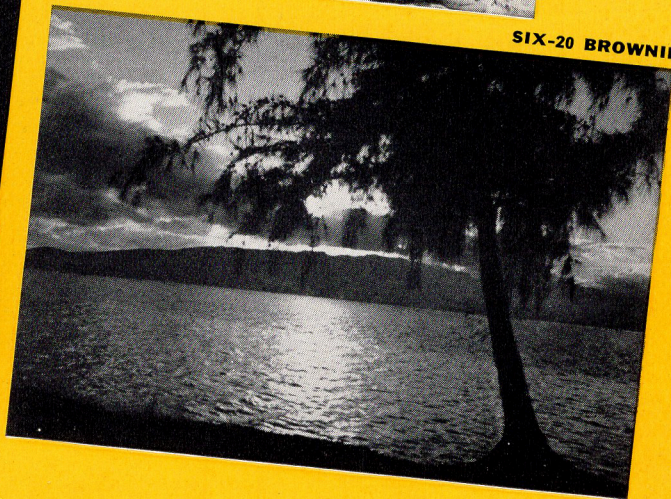
KODAK RETINA (enlargement)



BULLET CAMERA



SIX-20 BROWNIE

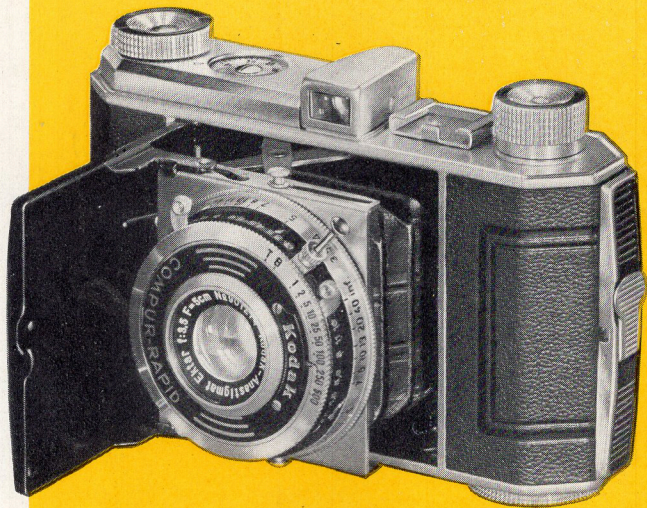


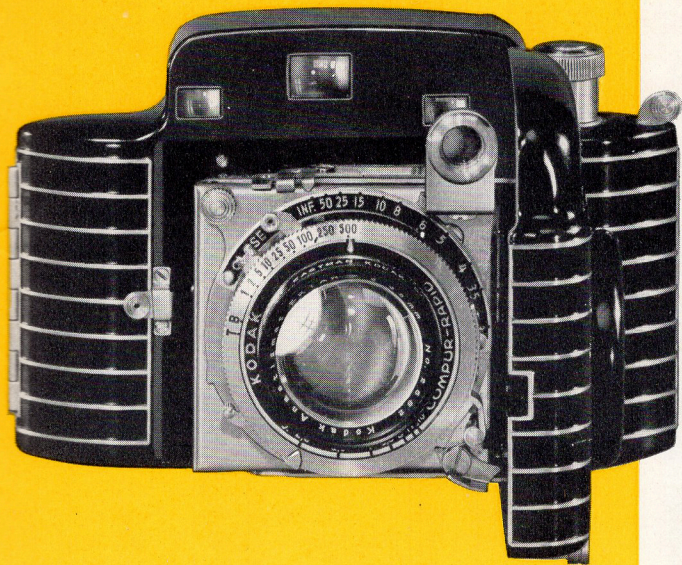
KODAK BANTAM SPECIAL (standard $2\frac{3}{4}$ x 4 enlargement)

Kodak Retina Here is remarkable photographic proficiency compressed to the dimensions of a true "miniature." Closed, the Retina slips into pocket or handbag. Opened in a second, it is ready not only for everyday photography, but for fast sports shots . . . indoor pictures at night . . . rainy-day snapshots . . . lovely, full-color views on Kodachrome Film. Its black-and-white pictures can be enlarged to striking proportions. Its color transparencies may be viewed as they are or projected on a screen, with charming results.

DETAILS Picture size, $1 \times 1\frac{1}{2}$ inches. Kodak Anastigmat EKTAR $f.3.5$ lens. Compur-Rapid shutter (1 to $1/500$). Finger and special plunger releases. Enclosed optical eye-level finder. Depth-of-focus scale. Exposure counter. Black morocco covering, chromium trimmings.

PRICES *Kodak Retina*, \$61. Soft black leather case, \$2.05. Combination case, for camera, filters, range finder, \$6.70. Kodak Film No. 135, 36 exposures: "SS," Panatomic, or Super X, \$.95; Infra-Red, \$1.30; 18 exposures: Panatomic or Super X, \$.65. Kodachrome Film No. K135 (K135A for Photoflood lighting), 18 exposures, \$3, including processing.





Kodak Bantam Special A camera that unites the adaptability of a fine "miniature" with advanced construction and styling. Bantam Special's coupled range finder simultaneously measures distances and focuses the camera. The Compur-Rapid shutter offers speeds to 1/500 second. A special device locks the film in position for each exposure. Best of all, the super-speed, super-corrected lens, Kodak Anastigmat EKTAR *f.2.0*, assures unsurpassed scope and quality in both black-and-white and Kodachrome full-color photography. The brilliantly finished aluminum body fully protects this mechanism, completing a choice photographic instrument.

DETAILS Standard black-and-white enlargement size, $2\frac{3}{4} \times 4$ inches. Stainless steel and chromium fittings. Special film-pressure plate. Weight, 16 ounces.

PRICES *Kodak Bantam Special*, \$120. Brown leather case, \$9. Field case, \$11. Kodak Film No. 828 (8 exposures): Panatomic, \$.20; Super X \$.25. Kodachrome Film No. K828 (K828A for Photoflood lighting), 8 exposures, \$1.65, including processing.



Six-16 and Six-20 Brownies Look where you may, you will not find a box camera that can excel either of these Brownies. Previous Brownie models have made photographic history... the Six-16 and Six-20 are following in their footsteps. As a matter of fact, they are even better than their predecessors, embodying, as they do, refinements that only yesterday's experience and today's facilities could provide. Their Diway lens insures sharp focus for either near or distant subjects. Finders are extra-large and of the brilliant type. Shutters are as dependable as ever. And the improvement in appearance made by the decorative metal front is obvious at a glance.

DETAILS Picture sizes: Six-16, $2\frac{1}{2} \times 4\frac{1}{4}$ inches; Six-20, $2\frac{1}{4} \times 3\frac{1}{4}$ inches. Eastman Rotary shutter (snapshot, time actions). Black morocco-grain covering.

PRICES *Six-16 Brownie*, \$4.25. Kodak Film No. 616 (8 exposures): Regular N.C., \$.30; Verichrome, \$.35; "SS" or Panatomic, \$.40. *Six-20 Brownie*, \$3.50. Kodak Film No. 620 (8 exposures): Regular N.C., \$.25; Verichrome, \$.30; "SS" or Panatomic, \$.35.

Six-16 and Six-20 Brownie Juniors

For large pictures, made in the simplest way possible, choose a Brownie Junior. The focus is "fixed"—you never have to measure distances. Just load your camera, aim at your subject, trip your shutter . . . and the picture is made. And your Junior will be good-looking, too, with its neat, leather-like covering, and . . . by way of contrast . . . its two-toned metal front. Point of prime importance, however, is this: into the design of the Brownie Juniors went real care, and out of them come real pictures, even though the user may never have tripped a camera shutter before.

DETAILS Picture sizes: Six-16, $2\frac{1}{2} \times 4\frac{1}{4}$ inches; Six-20, $2\frac{1}{4} \times 3\frac{1}{4}$ inches. Meniscus lens and protective front crystal. Rotary shutter (snapshot, time actions). Two extra-large ground-glass finders.

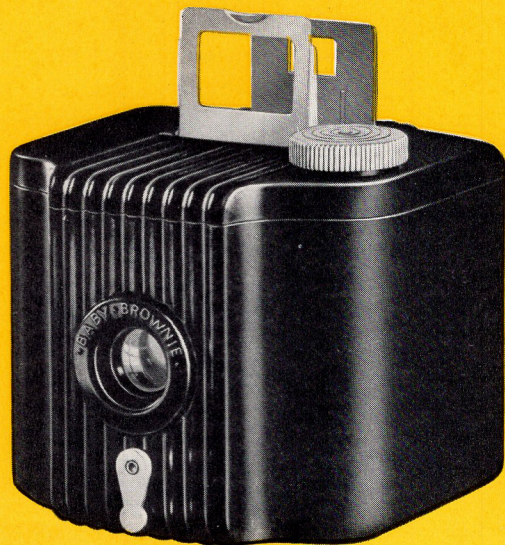
PRICES *Six-16 Brownie Junior*, \$3.25. Kodak Film No. 616 (8 exposures): Regular N.C., \$.30; Verichrome, \$.35; "SS" or Panatomic, \$.40. *Six-20 Brownie Junior*, \$2.75. Kodak Film No. 620 (8 exposures): Regular N.C., \$.25; Verichrome, \$.30; "SS" or Panatomic, \$.35.

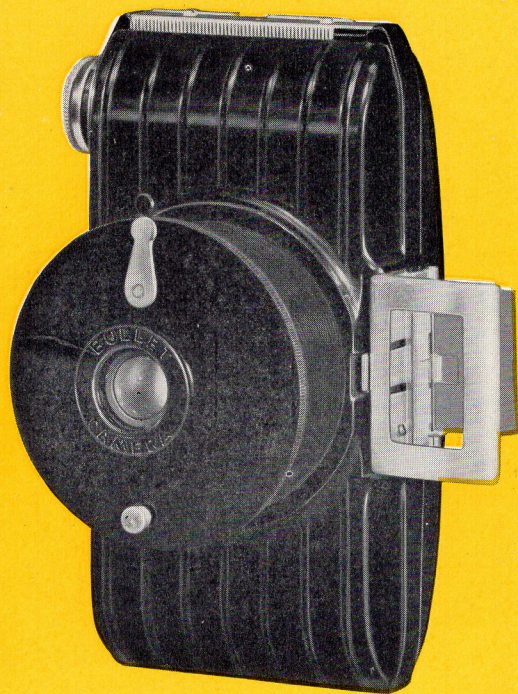


Baby Brownie Perhaps you have been doubtful as to whether a real camera could be built to sell for only one dollar. Yet here it is: a full-fledged, modern picture-taker...and an unusually handsome one, too. Many like its glossy black shape...its easy, reliable action. And others are surprised by the quality of the pictures it turns out. The explanation is simple: though small and inexpensive, the Baby Brownie embodies all the experience gained in many years of camera construction. It is correctly designed...carefully built...painstakingly inspected. The result is a smart little camera of amazing efficiency and reliability.

DETAILS Picture size, $1\frac{5}{8} \times 2\frac{1}{2}$ inches. Easy loading by removing top of camera. Makes vertical or horizontal pictures. Meniscus lens. Rotary shutter with snapshot action. Fixed focus, with range from 5 feet to infinity. Folding eye-level direct-view finder.

PRICES Baby Brownie, \$1.25. Carrying case, \$.36. Kodak Film No. 127 (8 exposures): Regular N.C., \$.20; Verichrome, \$.25; "SS" or Panatomic, \$.30.





Bullet Camera It's new . . . and its new features have quickly made it a sensation in picture-taking circles. One turn on its ingenious spiral mount and the lens is out in picture-taking position. The rest is just as easy: sight on the subject through the eye-level finder and press the release. No focusing is necessary. After the picture is made the finder is folded, the mount turned back, and the Bullet takes on a smooth, compact, hand-fitting form. It's more than a novelty, though, for it is scientifically designed for what every Eastman camera must do—make genuinely good pictures. Though it means fun from the start, the Bullet camera scores its real hit when the first batch of prints comes back.

DETAILS Picture size, $1\frac{5}{8} \times 2\frac{1}{2}$ inches. Latest molded construction, with permanent glossy finish. Meniscus lens. Snapshot and bulb actions. Removable back, for quick, easy loading.

PRICES Bullet Camera, \$3. Case with hand strap, \$.85. Kodak Film No. 127 (8 exposures): Regular N.C., \$.20; Verichrome, \$.25; "SS" or Panatomic, \$.30.

ACCESSORIES FOR THE PICTURE-MAKER

KODAFLECTOR (Right)

Improves greatly the efficiency of photo bulbs. Complete, \$6.25.

KODAK HANDY REFLECTOR, MODEL B (not illustrated)

Simple, effective cardboard reflectors; special holders. 2 for \$3.30.

KODAK POCKET RANGE FINDER

Eliminates the guesswork with any folding camera. \$8.70.

KODAK METAL TRIPODS

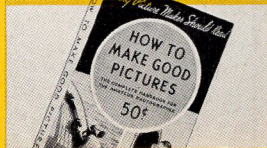
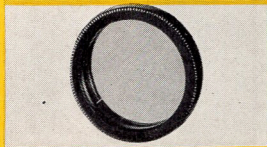
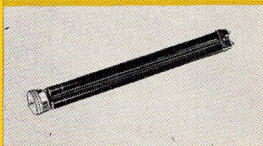
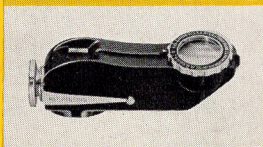
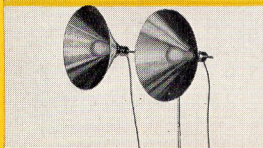
Fit any standard tripod socket. Legs are of light, rigid telescoping brass tubing. 3 models—one as low as \$3.95.

KODAPOD AND OPTIPOD

For standard tripod sockets. May be attached to any handy object to hold the camera steady during exposure. Kodapod, \$2.40; Optipod, \$1.60.

KODAK SELF TIMER

For any camera with a cable release. Clicks the shutter automatically. Allows camerist to take his own picture. \$1.60.



DARKROOM OUTFIT

Supplies for developing and printing at home. Kodak Developing and Printing Outfit No. 2, is \$3.60.

LENS ATTACHMENTS

Fit over the regular camera lens to give unusual results. Kodak Portrait Attachments, \$.55, \$.85, and \$2.50. Other types of attachments are as low as \$1.10.

VELOX WATER COLORS

12 shades coated on paper stamps. Rapidly soluble in water to produce effects desired. In enamel case with 3 brushes, \$1.30.

KODAK ALBUMS

Attractive . . . durable . . . easy to use. Many styles, in a wide price range. Kodak Albums are priced from \$.26 to \$6.65.

"HOW TO MAKE GOOD PICTURES"

Latest, revised edition of this helpful publication. Hundreds of pictures, diagrams. Every amateur photographer should own a copy. Price \$.50.





ACCEPT NOTHING BUT THE
FILM WITH THE TRADE MARK
"KODAK" ON THE BOX.

In Canada "KODAK" is the registered
trade-mark and sole property of Canadian
Kodak Co., Limited, Toronto, Ontario.



WARD & SON
STORE No. 2 312 PRINCESS ST.
Phone 2699 - KINGSTON, ONT.