



PREMO CAMERAS



# PREMO CAMERAS

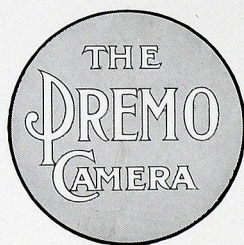
NINETEEN  
HUNDRED  
FIFTEEN

MANUFACTURED BY  
ROCHESTER OPTICAL DIVISION  
EASTMAN KODAK COMPANY  
ROCHESTER, N. Y.



# P R E M O S

Have been manufactured and have given continuous good service to the public for over thirty years. They not only have these long years of keen manufacturing experience behind them, but are also backed by the policy of the Eastman Kodak Co. of allowing nothing to be placed on the market which will not do all that is claimed for it. Anyone interested in amateur photography will find listed in this catalogue a line of cameras from which a most satisfactory choice can be made, no matter what the requirements may be, and each model is efficient and dependable in the fullest sense of the terms.





## COMPACT EFFICIENCY

THE underlying idea in Premo construction is that each model shall possess the highest degree of efficiency for the work for which it is intended and at the same time be kept as compact, as light in weight, and as convenient to operate as the most painstaking effort can make it.

The perfection of the daylight loading Premo Film Pack system has made the Premo the simplest of all cameras to load and operate. And the film pack takes up so little room that it is possible to make Premo cameras remarkably light, compact and so free from complications that they can be furnished at very moderate prices, considering the quality which is put into each one.

Every Premo is fitted with the most efficient type of shutter in its particular grade, and all lenses, from the meniscus to the anastigmat, are carefully tested by the highest standard, and promptly rejected if they fail to come up to that standard.

In the matter of lenses, still greater efficiency has been added to the Premo line this year by the addition of the new Kodak Anastigmat lens, *f.* 7.7. While all Premo lenses, as stated above, are fully reliable in their particular field, an anastigmat, of course, offers a very decided advantage in definition, flatness of field, and sharpness, over any uncorrected lens. And in this new lens is offered such an anastigmat, with the additional advantage of greater speed, at a very nominal increase in price.

Aside from lens and shutter equipment and painstaking construction, the remaining factor for efficiency is the film used. Premo Film Pack film is cut from the same stock as the Eastman N. C. Film, so that there can be no question of quality of results.

All Premo cameras are accompanied by clearly worded instruction books which make it easy for the veriest beginner to make good pictures with a Premo from the start. In each instruction book is a blank form which, when filled out and returned to us, entitles the purchaser of the camera to a free subscription for one year to "Kodakery", a monthly photographic magazine of instruction and entertainment for the amateur.

ROCHESTER OPTICAL DIVISION,

EASTMAN KODAK CO.,

ROCHESTER, N. Y.



# THE PREMO FILM PACK

**I**N our advertising, we often refer to Premos as being the smallest and lightest, the easiest to load and operate of all cameras. This is true, because the Premo Film Pack, with which most of our cameras are loaded, requires very little space when in use and itself is constructed upon a most simple, convenient principle.

Packed flat, the Premo Film Pack can be loaded in Premo Film cameras by two operations. Just open back of camera and drop in pack—then close back and it's done. This is the easiest and quickest method of loading any camera.



To prepare for the first exposure, simply pull out from the pack the paper tab marked

"Safety Cover." Then to change films for successive exposures, merely pull out successive tabs. Upon pulling out the twelfth tab the pack is rendered light-tight, so that it may be safely removed in any light.

With these advantages of easy loading and operating, the Premo Film Pack has another most important one—the removal of one or more films for development at any time.

This feature is found in no other film system, and obviates the necessity of exposing all the films before any can be developed.



And development has been made very simple. As we have said, anyone who follows directions in our instruction books can make good exposures, and if the exposures are right, development, heretofore a bugbear to many amateurs, is certain with the Premo Film Pack Tank.

All one has to do is to dissolve the developing powders in the tank, bring the solution to the proper temperature and put in the films. See page 34.



## THE PREMO ADAPTER

**W**ITH the introduction of the Premo Film Pack it was found that a simple film pack holder or adapter, modeled upon the ordinary plate holder, would make it a simple matter to load any Premo plate camera with film packs.

The Premo Film Pack Adapter has the general size and appearance of a plate holder. But it has a hinged back which can be easily opened, the film pack dropped in place, back closed, and the adapter then loaded into the plate camera just as an ordinary plate holder is.

To make exposures, the slide is withdrawn, the "safety cover" pulled out and the film pack operated for successive exposures just as in film cameras.

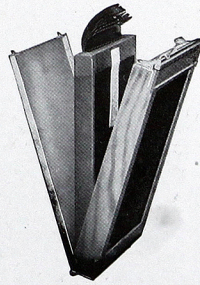
Then at any time the slide may be reinserted, the adapter removed and the subject sharply focused on the ground glass by precisely the same method you would follow in using glass plates.

Thus a Premo plate camera will take films or plates with equal facility; it offers the daylight loading and other features of the Premo Film Pack, as well as every advantage of the ordinary focusing camera; and many of these Premos are as compact as purely film cameras.

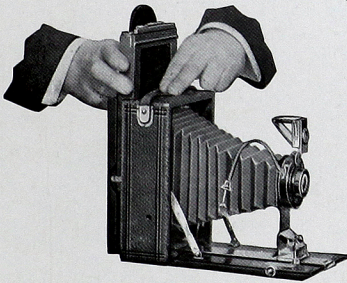
With the Premo Film Pack Adapter, also, it is an easy matter to make multiple pictures (two or more exposures) on one film.

This is done by manipulating the slide in connection with the film pack tab, and the procedure is fully explained in the Premo manuals.

For prices on Premo Film Packs and Adapters, see page 42.



Premo  
Film Pack Adapter.



The Adapter is loaded just like  
a Plate Holder.



## KODAK BALL BEARING SHUTTERS

AS the name of this shutter implies, the leaves work on ball bearings, giving it remarkable smoothness and precision, and as the leaves open and close in the shape of a star, the very maximum of light is admitted for each exposure.

Another feature of this shutter is the cable release—replacing the usual rubber bulb and tube. This does away with shutter pumps, is practically indestructible, and removes all the objections found with rubber for this purpose. The shutter is also supplied with finger release, iris diaphragm, and has variable indicated speeds of  $1/25$ ,  $1/50$  and  $1/100$  second, as well as bulb and time

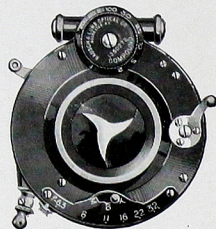


exposure actions.

It is regularly supplied with the Film Premo No. 1, Pocket Premo C and Premoette Sr. A modified type similar to the above but fitted with bulb and tube instead of cable release is supplied with the Premo No. 8. The No. 0 Ball Bearing Shutter supplied with the Premoette Jr. No. 1 operates with finger release only and is graduated for speeds of  $1/25$  and  $1/50$  second.

## COMPOUND SHUTTER

The Compound Shutter is an automatic and setting shutter combined. Automatically, either time or bulb exposures may be made, while it may be set for speeds of from 1 to  $1/150$ ,  $1/200$  and  $1/250$  second, according to size of shutter. The shutter leaves are formed of segments opening in star shape, giving even illumination over the entire plate the instant the exposure is started, and it has an iris diaphragm. Case is made of aluminum, and accurate adjustments can be made with shutter in any position. It may be operated by either bulb or finger release.



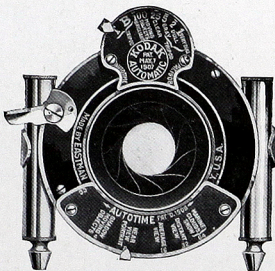
The Compound Shutter is regularly supplied on the Premoette Jr. Specials Nos. 1 and 1A and Filmplate Premo Special.



# KODAK AUTOMATIC SHUTTER AND KODAK AUTOTIME SCALE

THE Kodak Automatic Shutter is carefully adjusted for time, bulb and instantaneous exposures. It is also graduated for fractional parts of a second, is unusually accurate and works with either finger or cable release.

This shutter is regularly fitted with the Kodak Autotime Scale, and is supplied on the Filmplate and Premos Nos. 9 and 10. You need never have a defective negative of out-of-door subjects, as this scale assures correct exposures when used according to instructions. The objects of the scale are, first to correctly time the exposure according to the light prevailing; second, to use the aperture giving the correct depth of focus and definition required by the subject. The technical knowledge is supplied by the scale itself. It automatically tells the photographer how to make the exposure.



These scales are supplied regularly on the Kodak Automatic Shutter and at a nominal charge for all other standard shutters and lenses, and can be readily attached by any one. Always order by style letter as below.

- Style A. For use with Kodak Ball Bearing shutter,  $2\frac{1}{2} \times 4\frac{1}{4}$  and  $3\frac{1}{4} \times 4\frac{1}{4}$ , when fitted with double lens only.
- Style AA. For use with Kodak Ball Bearing shutter,  $3 \times 5\frac{1}{4}$ ,  $3\frac{1}{4} \times 5\frac{1}{2}$  and  $4 \times 5$ , when fitted with double lens only.
- Style B. For use with F. P. K. Automatic,  $2\frac{1}{2} \times 4\frac{1}{4}$  and  $3\frac{1}{4} \times 4\frac{1}{4}$ , No. 1 S. V. Automatic, or No. 1 B. & L. S. V. Automatic shutters.
- Style BB. For use with F. P. K. Automatic,  $3\frac{1}{4} \times 5\frac{1}{2}$  and  $4 \times 5$ , No. 2 S. V. Automatic, or No. 2 B. & L. S. V. Automatic shutters.
- Style C. For use with Kodak Automatic shutter,  $3\frac{1}{4} \times 4\frac{1}{4}$ .
- Style CC. For use with Kodak Automatic shutter,  $3\frac{1}{4} \times 5\frac{1}{2}$  and  $4 \times 5$ .
- Style D. For use with B. & L. Automatic and Century Automatic shutters,  $3\frac{1}{4} \times 4\frac{1}{4}$ .
- Style DD. For use with B. & L. Automatic and Century Automatic shutters,  $3\frac{1}{4} \times 5\frac{1}{2}$  and  $4 \times 5$ .
- Style DDD. For use with B. & L. Automatic shutter,  $4\frac{1}{4} \times 6\frac{1}{2}$ .
- Style H. For use with No. 0 Compound shutter,  $2\frac{1}{2} \times 4\frac{1}{4}$  and  $3\frac{1}{4} \times 4\frac{1}{4}$ .
- Style HH. For use with No. 1 Compound shutter,  $3\frac{1}{4} \times 5\frac{1}{2}$  and  $4 \times 5$ .
- Style HHH. For use with No. 2 Compound shutter,  $4\frac{1}{4} \times 6\frac{1}{2}$  and  $5 \times 7$ .
- Style K. For use with Kodak Ball Bearing shutter and Planatograph lens as supplied on Premoette Jr. No. 1.
- Style KK. For use with Kodak Ball Bearing shutter and Meniscus Achromatic lens as supplied on Premoette Jr. No. 1.

## PRICES

Styles H, HH and HHH	-	-	-	-	-	\$1.50
All other styles	-	-	-	-	-	1.00



# PREMO JUNIOR CAMERAS



THE Premo Juniors are ideal cameras of the fixed focus type, for besides the advantages of the ordinary fixed focus camera, they offer in addition all the simplicity of loading and operating of the Premo Film Pack. (See page 4.)

Fitted with tested lenses and automatic shutters, these cameras make most satisfactory pictures in the hands of anyone, and are especially suitable for the children, by reason of their simplicity, small price and substantiality.

## SPECIFICATIONS

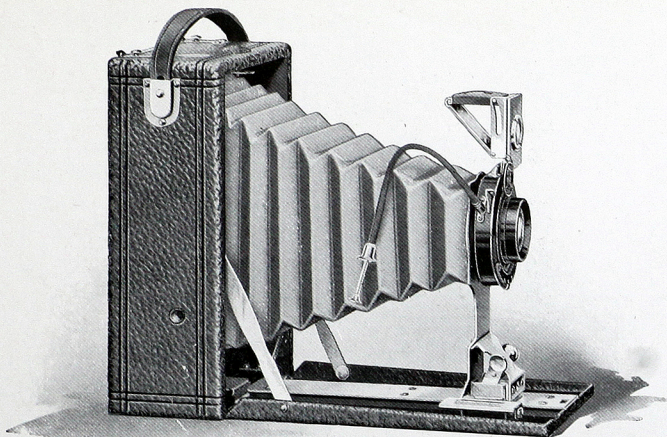
Capacity, 12 exposures without reloading. Size of Camera, No. 0,  $2\frac{1}{4} \times 3\frac{5}{8} \times 5\frac{1}{4}$  in.; No. 1,  $3\frac{1}{8} \times 4\frac{1}{2} \times 5\frac{3}{4}$  in.; No. 1A,  $3\frac{1}{2} \times 5\frac{1}{2} \times 5\frac{7}{8}$  in.; No. 3,  $4 \times 5\frac{1}{2} \times 5\frac{3}{4}$  in. Weight, No. 0, 7 ozs.; No. 1, 11 ozs.; No. 1A, 14 ozs.; No. 3, 20 ozs. Shutters, Rotary Automatic, all excepting No. 0, with diaphragm stops. Lens, No. 0 and No. 1 Meniscus; No. 1A and 3, Meniscus Achromatic. Finders, two. Tripod Sockets, No. 0, none; Nos. 1, 1A and 3, two.

## PRICES

	No. 0 $1\frac{3}{4} \times 2\frac{3}{8}$	No. 1 $2\frac{1}{4} \times 3\frac{1}{4}$	No. 1A $2\frac{1}{2} \times 4\frac{1}{4}$	No. 3 $3\frac{1}{4} \times 4\frac{1}{4}$
Premo Junior, Meniscus Lens, Automatic Shutter - -	\$1.50	\$2.00		
Ditto with Meniscus Achromatic Lens - - -			\$3.00	\$4.00
Carrying Case - - -	.60	.75	.85	1.10
Premo Film Pack (12 exposures) - - -	.25	.40	.50	.70
Kodak Portrait Attachment -		.50	.50	.50



# F I L M P R E M O N o . 1



THE Film Premos are convenient and easy of manipulation to the last degree. Working upon this principle we are able to offer these cameras not only at moderate prices, but for compactness and light weight, for ease of loading and unloading, the Film Premos have a considerable margin over any other type of camera.

As convenient and low priced as these cameras are, however, the very first consideration in their construction is the quality of results which must be produced. And the lens and shutter equipments and the film used in them offer the assurance that the Film Premos will produce as good pictures as any camera that can be purchased, aside from those fitted with anastigmat lenses.

## SPECIFICATIONS

Capacity, 12 film exposures. Box, seasoned wood. Bed, aluminum. Dimensions,  $3\frac{1}{4} \times 4\frac{1}{4}$ ,  $2\frac{1}{4} \times 4 \times 5\frac{1}{2}$  in.; 3A ( $3\frac{1}{4} \times 5\frac{1}{2}$ ),  $2\frac{3}{8} \times 4\frac{5}{8} \times 7\frac{1}{8}$  in. Weight  $3\frac{1}{4} \times 4\frac{1}{4}$ , 19 ozs.; 3A ( $3\frac{1}{4} \times 5\frac{1}{2}$ ), 29 ozs. Lens, Planatograph. Shutter, Kodak Ball Bearing with cable release (see page 6). Tripod Sockets, two. Finder, reversible, brilliant, collapsible. Automatic Standard Clamp.

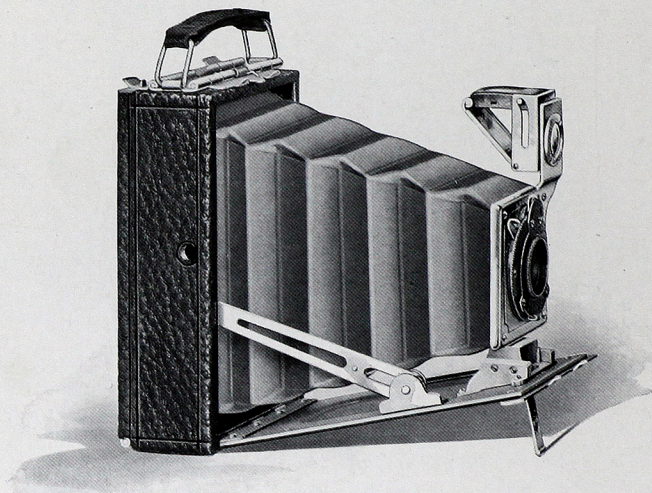
## PRICES

	$3\frac{1}{4} \times 4\frac{1}{4}$	3A $3\frac{1}{4} \times 5\frac{1}{2}$
Film Premo No. 1, with Planatograph Lens and Kodak Ball Bearing Shutter - -	\$10.00	\$12.50
Ditto with Meniscus Achromatic Lens and Kodak Ball Bearing Shutter - -	8.00	10.50
Sole Leather Carrying Case - - - -	1.50	2.00
Kodak Autotime Scale (See page 7 for style)	1.00	1.00
Premo Film Pack (12 exposures) - -	.70	.80
Kodak Portrait Attachment - - - -	.50	.50





## P R E M O E T T E J U N I O R



**C**OMPACT efficiency is the secret of the really remarkable success of this attractive little camera.

Made largely of aluminum, it is just a trifle larger than the pictures it makes, and it is so easy to operate, so well manufactured, so carefully equipped and tested, that the merest beginner in photography can use a Premoette Jr. and get pictures of excellent quality from the very start. Besides this, Premoette Jr. negatives are of such good quality that enlargements up to almost any size can be made from them, when desired. Thus with this little camera, which can be carried in a boy's pocket or a lady's hand-bag, it is easily possible, by the simple process of enlargement, to get pictures as large as those made with the most bulky of view cameras.

For this reason many amateurs who have larger outfits are adding these inexpensive little cameras to their equipment. In fact, there is not an amateur photographer in the country, no matter how complete his photographic equipment, who would not find a Premoette Jr. a very convenient and valuable addition to it.



# P R E M O E T T E J U N I O R

The greatest of care is taken in the selection of lenses for these cameras. For the single lens fitting, only meniscus achromatic lenses which have stood rigid tests are used, and the same is true of the double lens equipment where our standard Planatograph lenses are fitted in each case. Thus these cameras will produce sharp, clearly defined pictures under all ordinarily favorable conditions.

The Premoette Jr. is fitted with the smoothly working, precise Kodak Ball Bearing Shutter, the camera is covered with genuine grain leather and is handsomely finished in every detail. And with its compact, substantial construction and capabilities for high grade work is combined that simplicity of loading and operating possible only in a Premo Film Pack camera. (See page 4.) In addition to these advantages any Premoette Jr. will make an excellent outfit for home portrait work when fitted with the inexpensive Kodak Portrait Attachment.

For one who desires to make a present at the holidays, or on any occasion, the Premoette Jr. makes an ideal gift. It is suitable alike for a boy or girl, a man or woman of any age.

## S P E C I F I C A T I O N S

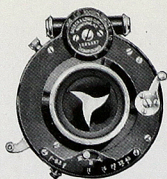
*Premoette Jr. No. 1.* Capacity, 12 film pack exposures without reloading. Dimensions,  $1\frac{1}{2} \times 3 \times 4\frac{3}{4}$  in. Weight, 12 ozs. Lens, Meniscus Achromatic. Shutter, Kodak Ball Bearing No. 0 (See page 6). Finder, collapsible, reversible, brilliant. Tripod Sockets, two.

*Premoette Jr. No. 1A.* Capacity, 12 film pack exposures without reloading. Dimensions,  $1\frac{3}{4} \times 3\frac{1}{4} \times 5\frac{3}{4}$  in. Weight, 18 ozs. Lens, Meniscus Achromatic. Shutter, Kodak Ball Bearing (see page 6), but has no bulb, operating with finger release only. Finder, brilliant, reversible, collapsible. Tripod Sockets, two.

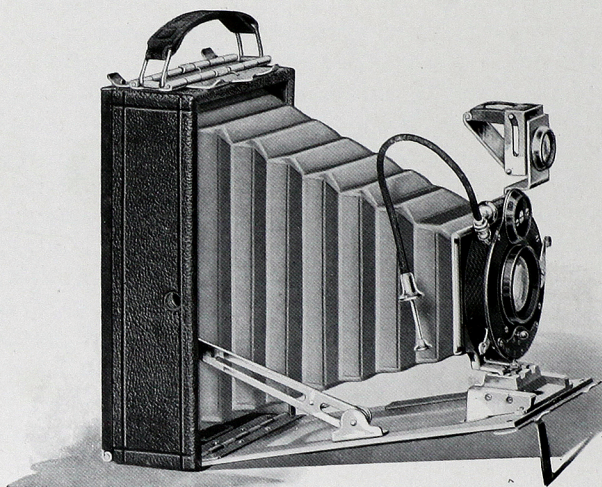
## P R I C E S

	No. 1 $2\frac{1}{4} \times 3\frac{1}{4}$	No. 1A $2\frac{1}{2} \times 4\frac{1}{4}$
Premoette Jr. with Meniscus Achromatic Lens		
and Kodak Ball Bearing Shutter - - -	\$5.00	\$ 8.00
Ditto, with Planatograph Lens - - -	7.00	10.00
Kodak Autotime Scale (See page 7 for style)	1.00	1.00
Carrying Case - - - - -	1.00	1.25
Premo Film Pack (12 exposures) - - -	.40	.50
Kodak Portrait Attachment - - - - -	.50	.50





## PREMOETTE JR. *SPECIAL*



**F**OR the average amateur the regular Premoette Jr. will be found eminently satisfactory, but for those who insist upon the best to be had, who demand a camera capable of making good pictures under all conditions where pictures could possibly be made, the Premoette Jr. Special offers the very maximum of photographic efficiency in the smallest possible compass.

Here is a camera with the light weight and compactness, the ease of loading and operating of the original Premoette Jr., but with an equipment which places it on a par in capabilities, with the largest, most expensive amateur cameras made.

It is fitted with the Compound Shutter with cable release, attaining a maximum speed of  $1/300$  of a second in the No. 1, and  $1/250$  in the No. 1A size, and the Zeiss Kodak Anastigmat lens,  $f. 6.3$ . This lens was made expressly for hand camera work and combines depth, definition and speed to a remarkable degree. This equipment enables one to work under adverse conditions that the ordinarily equipped camera could not meet as, for instance, snap shot work in dull lights, fast indoor por-



## P R E M O E T T E   J R .   S P E C I A L

traiture, and the like. And the remarkable sharpness of the negatives makes them suitable for enlarging up to any size desired.

Either size can be carried in the pocket or in a lady's handbag. Thus, however cramped for room, one may be certain he can take along a Premoette Jr., and make as good pictures of anything he cares about, as can be made with any camera.

Aside from the difference in size, the two models are practically identical. Focusing is provided for by a series of three focusing slots in which the standard is inserted as occasion requires. The focusing block on the No. 1 folds over to permit closing the camera; in the No. 1A this is not necessary.

In keeping with its high grade equipment, we have finished this camera in the best possible manner. It is covered with genuine Persian Morocco, and the bellows is of the finest quality black leather, giving it a rich, attractive appearance.

In a word, this is the finest, handsomest small camera you ever saw—a marvel of compactness and efficiency.

These cameras as fitted with Cooke Kodak Anastigmat lens, *f.* 6.3, offer unusual value in an anastigmat equipment at very low prices.

### S P E C I F I C A T I O N S

*Premoette Jr. No. 1 Special.* Capacity, 12  $2\frac{1}{4} \times 3\frac{3}{4}$  film pack exposures without reloading. Dimensions,  $1\frac{1}{2} \times 3 \times 4\frac{3}{4}$  in. Weight, 13 ozs. Lens, Zeiss Kodak Anastigmat, *f.* 6.3. Shutter, compound with cable release, highest speed  $1/300$  second. Finder, brilliant, reversible, collapsible. Tripod Sockets, two.

*Premoette Jr. No. 1A Special.* Capacity, 12  $2\frac{1}{2} \times 4\frac{1}{4}$  Premo Film Pack exposures without reloading. Dimensions,  $1\frac{3}{4} \times 3\frac{3}{4} \times 5\frac{3}{4}$  in. Weight, 19 ozs. Lens, Zeiss Kodak Anastigmat, *f.* 6.3. Shutter, compound with cable release, highest speed  $1/250$  second. Finder, reversible, brilliant, collapsible. Tripod Sockets, two.

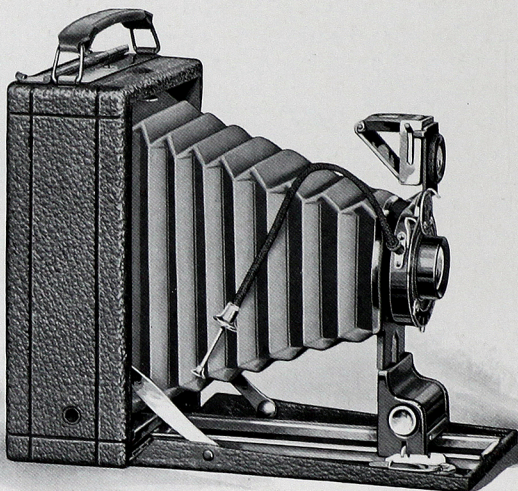
### P R I C E S

	No. 1 $2\frac{1}{4} \times 3\frac{3}{4}$	No. 1A $2\frac{1}{2} \times 4\frac{1}{4}$
Premoette Jr. Special with Zeiss Kodak Anastigmat Lens, <i>f.</i> 6.3, and Compound Shutter	\$36.00	\$41.00
Ditto, with Cooke Kodak Anastigmat Lens, <i>f.</i> 6.3		32.00
Grain Leather Carrying Case	1.50	1.75
Kodak Autotime Scale (See page 7 for style)		1.50
Premo Film Pack (12 exposures)	.40	.50
Kodak Portrait Attachment	.50	.50





## P R E M O E T T E S E N I O R



**T**HE advantages of the anastigmat lens for amateur photography have become so generally recognized that we have designed this new model to provide, for the most popular of the larger amateur sizes, a compact, easily operated camera with anastigmat efficiency, at the lowest possible price.

It is made in the  $2\frac{1}{2} \times 4\frac{1}{4}$  and  $3\frac{1}{4} \times 5\frac{1}{2}$  (post card) sizes, and is equipped with the new Kodak Anastigmat *f.* 7.7, lens. This lens, for definition and covering power, is the equal of any anastigmat made, and has a higher speed than any R. R. lens. Thus in getting this camera the amateur assures himself not only of the microscopic definition of the finest anastigmat, but also of a greater speed than is possible with the ordinarily equipped camera. And when it is considered that a perfectly reliable  $2\frac{1}{2} \times 4\frac{1}{4}$  camera with these advantages can be bought for \$15.00, and a  $3\frac{1}{4} \times 5\frac{1}{2}$  (post card) camera for \$17.50, the desirability of this model to the amateur photographer can not be over-estimated.



# P R E M O E T T E   S E N I O R

The Premoette Sr. is carefully made in every detail. The idea has been to keep the camera as simple in operation as possible, to avoid all special adjustments or features which were not essential to the making of first-class pictures under average conditions of amateur photography. This camera makes no pretensions to cover the field of the specialist, but it is a camera which will give the best of satisfaction to those who wish to make good, clear, sharp, every-day pictures of the persons and things they are interested in.

This idea has not only enabled us to keep the price of the camera low, but also to offer a camera which, in compactness, light weight, ease of operating and all-around simplicity, has a considerable margin over the average type of camera.

The Premoette Sr. can be loaded in an instant in any light. Just open back of camera, drop in Premo Film Pack, close back and it's done. To change films for successive exposures, just pull out successive film pack tabs.

The lens support, or standard, is exceptionally rigid, and is operated along the runways by means of an automatic clamp, making it an easy matter to draw the lens out to the focusing scale, where an automatic focusing lock provides for instant focusing of objects at any distance.

They are covered with genuine leather of selected grain, metal parts are finished in nickel and black lacquer, and they are cameras which the merest beginner can successfully use, without any previous experience.

## S P E C I F I C A T I O N S

Capacity, 12 exposures. Box, seasoned wood. Bed and back, aluminum. Dimensions,  $2\frac{1}{2} \times 4\frac{1}{4}$ ,  $1\frac{7}{8} \times 3\frac{5}{8} \times 5\frac{5}{8}$  inches; 3A,  $3\frac{1}{4} \times 5\frac{1}{2}$ ,  $2\frac{1}{4} \times 4\frac{1}{2} \times 7\frac{1}{8}$  inches. Weight,  $2\frac{1}{2} \times 4\frac{1}{4}$ , 21 ounces; 3A,  $3\frac{1}{4} \times 5\frac{1}{2}$ , 35 ounces. Lens, Kodak Anastigmat, *f.* 7.7. Shutter, Kodak Ball Bearing, with cable release (See page 6). Tripod Sockets, two. Finder, reversible, brilliant, collapsible. Automatic standard clamp. Automatic focusing lock.

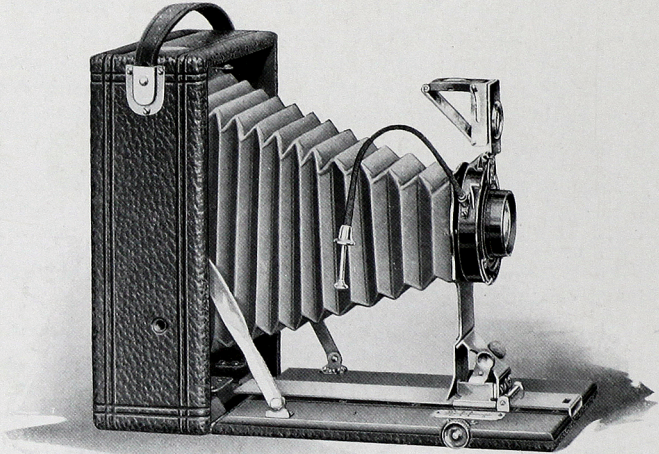
## P R I C E S

		3A
Premoette Sr. with Kodak Anastigmat Lens,	$2\frac{1}{2} \times 4\frac{1}{4}$	$3\frac{1}{4} \times 5\frac{1}{2}$
<i>f.</i> 7.7, and Kodak Ball Bearing Shutter -	\$15.00	\$17.50
Sole Leather Carrying Case - - -	1.50	2.00
Kodak Autotime Scale (See page 7 for style)	1.00	1.00
Premo Film Pack (12 exposures) - -	.50	.80
Kodak Portrait Attachment - - -	.50	.50





## P O C K E T P R E M O C



**I**N this camera are offered the daylight loading feature and all the other conveniences of films, together with the ground glass focusing feature of the plate camera. It uses films or plates with equal facility, and the ground glass may be used for focusing before each exposure just as well *when using films* as when using plates.

In loading, the method is precisely the same; one is just as convenient as the other. The camera is loaded with plates by means of an ordinary double plate holder, with films, in the Premo Film Pack Adapter. (See page 5.)

The camera is equipped with an accurate focusing scale, so that it may be focused by scale if desired. You do not have to use the ground glass. But when you want it, it is always there. A rack and pinion attachment is supplied for ease in focusing.

These advantages are offered in a camera which is even lighter and more compact than the average purely film camera and which is so easy to operate that anyone can make good pictures with a Pocket Premo C from the



# P O C K E T P R E M O C

start, without any previous experience. The Pocket Premo C is fitted with our Planatograph, the best rapid rectilinear lens that can be obtained, and the new Kodak Ball Bearing Shutter with cable release. With this lens working at *f.* 8 and shutter with star-shaped leaves, the camera is very effective for general "snap shot" work.

This camera is also offered equipped with the new Kodak Anastigmat lens, *f.* 7.7. This lens provides the sharpness of focus and the definition of the highest grade anastigmat lens, and has an advantage in speed over any R. R. lens. With such a lens, the Pocket Premo C is especially desirable, for with its ground glass focusing feature, it enables one to obtain the fullest advantage of an anastigmat lens equipment.

The ground glass focusing feature makes this camera especially desirable for home portraiture when fitted with Kodak Portrait attachment, for you can then see exactly how the subject is going to look in the finished picture and arrange your focus accordingly.

For the popular post card size, the 3A Pocket Premo C makes an outfit of unusual scope and capabilities at a moderate price. The camera is handsomely finished, covering is genuine leather, bellows is of red leather and metal parts are nickeled.

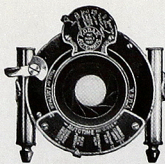
## SPECIFICATIONS

Capacity, 12 film or 2 plate exposures. Box, mahogany. Bed, mahogany, with rack and pinion for focusing. Finder, reversible, collapsible, brilliant. Tripod Sockets, two. Lens, Planatograph. Shutter, Kodak Ball Bearing, with cable release (see page 6). Dimensions,  $3\frac{1}{4} \times 4\frac{1}{4}$ ,  $2\frac{1}{8} \times 4\frac{1}{4} \times 5\frac{1}{2}$  in.; 3A ( $3\frac{1}{4} \times 5\frac{1}{2}$ ),  $2\frac{1}{4} \times 5 \times 7\frac{1}{8}$  in. Weight,  $3\frac{1}{4} \times 4\frac{1}{4}$ , 21 ozs.; 3A ( $3\frac{1}{4} \times 5\frac{1}{2}$ ), 32 ozs. Automatic Standard Clamp.

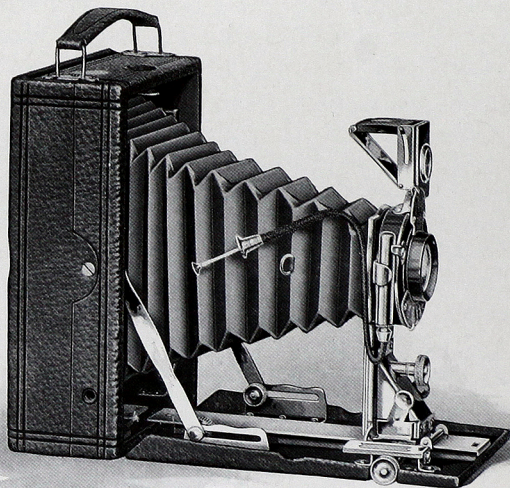
## PRICES

	$3\frac{1}{4} \times 4\frac{1}{4}$	3A $3\frac{1}{4} \times 5\frac{1}{2}$
Pocket Premo C with Planatograph Lens,		
Kodak Ball Bearing Shutter and Plate		
Holder - - - - -	\$12.00	\$15.00
Ditto, with Kodak Anastigmat Lens, <i>f.</i> 7.7 - - -	17.00	20.00
Double Plate Holder - - - - -	1.00	1.00
Sole Leather Carrying Case - - - - -	1.75	2.00
Kodak Autotime Scale (See page 7 for style) - - -	1.00	1.00
Premo Film Pack Adapter - - - - -	1.00	1.50
Premo Film Pack (12 exposures) - - - - -	.70	.80
Kodak Portrait Attachment - - - - -	.50	.50





## F I L M P L A T E P R E M O



**I**N choosing his photographic outfit the amateur is often undecided as to whether he should select a film or a plate camera. He knows that the film camera is more convenient, that it will load and unload in daylight, and as the films are much lighter and occupy less space than dry plates, he knows that the film camera is especially desirable for use at vacation time, when traveling, and on other occasions where light weight and the greatest convenience are necessary. On the other hand, he knows that the plate camera offers the advantage of ground glass focusing between each exposure—a very desirable feature to many as it insures absolutely sharp focus and does away with the estimating of distances.

In the Filmplate Premo the question is very easily answered, for this camera takes films or plates with equal facility, just as the user chooses. Thus in this camera are offered the daylight loading feature and all the other conveniences of films, together with the ground glass focusing feature of the plate camera. And the ground glass may be used for focusing before each exposure just as well *when using films* as when using plates.



# F I L M P L A T E P R E M O

The underlying idea of this model is to supply a camera equipped for the most serious work, in as compact and convenient form as possible. It has a rack and pinion for focusing, rising and sliding front and swing bed. These latter features are of great importance in making pictures of high buildings, mountains, and the like, for they enable the user to decrease his foreground without tipping the camera proper, which would cause an untrue convergence of lines toward the top of the picture.

It is fitted with the new Kodak Automatic Shutter with Kodak Autotime Scale and cable release. The lens is the Planatograph, the best lens obtainable aside from an anastigmat.

With all these advantages there is nothing bulky or cumbersome or complicated about the Filmplate Premo. It is as compact and as easily carried as the average camera for films alone. It is so simple to understand and operate that anyone who can read the instructions which come with the camera can at once start in to make good pictures, without any trouble at all.

These cameras are especially suitable for home portraiture with the Kodak Portrait Attachment on account of the ground glass focusing feature.

## SPECIFICATIONS

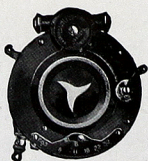
Capacity, 12 film or 2 plate exposures. Box, cherry. Bed, aluminum. Rack and pinion for fine focusing. Front, rising and sliding. Finder, reversible, brilliant, collapsible. Tripod Sockets, two. Lens, Planatograph. Shutter, Kodak Automatic with Autotime Scale (see page 7). Dimensions,  $3\frac{1}{4} \times 4\frac{1}{4}$ ,  $2\frac{1}{4} \times 4\frac{1}{8} \times 5\frac{3}{8}$  in.; 3A ( $3\frac{1}{4} \times 5\frac{1}{2}$ ),  $2\frac{3}{8} \times 4\frac{3}{4} \times 7\frac{1}{8}$  in.;  $4 \times 5$ ,  $2\frac{1}{4} \times 4\frac{7}{8} \times 6\frac{1}{8}$  in.;  $5 \times 7$ ,  $2\frac{5}{8} \times 6 \times 8\frac{3}{8}$  in. Weight,  $3\frac{1}{4} \times 4\frac{1}{4}$ , 30 ozs.; 3A ( $3\frac{1}{4} \times 5\frac{1}{2}$ ), 37 ozs.;  $4 \times 5$ , 33 ozs.;  $5 \times 7$ , 56 ozs. Automatic Standard Clamp.

## PRICES

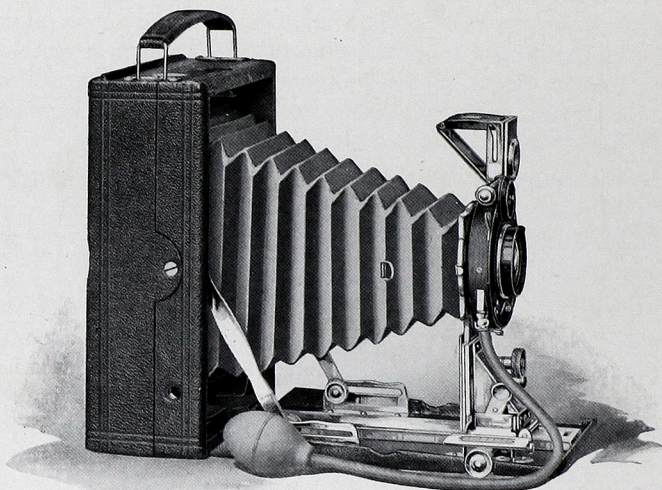
Filmplate Premo with Planatograph Lens, Kodak Auto. Shutter, Autotime Scale, Plate Holder and Film Pack Adapter -

	$3\frac{1}{4} \times 4\frac{1}{4}$	3A $3\frac{1}{4} \times 5\frac{1}{2}$	$4 \times 5$	$5 \times 7$
Carrying Case - - -	\$22.50	\$25.00	\$25.00	\$30.00
Premo Film Pack - - -	1.75	2.25	2.25	3.00
Kodak Portrait Attachment -	.70	.80	.90	1.60
	.50	.50	.50	.50





## FILMPLATE PREMO *SPECIAL*



**F**OR those who want the highest possible efficiency in a hand camera, combined with compactness and convenience, the Filmplate Premo Special is truly the ideal camera.

It is thoroughly equipped to make good pictures under all conditions of amateur photography where good pictures could possibly be made, aside from ultra rapid focal plane photography.

It is fitted with every desirable mechanical convenience. It has a fast, fully corrected lens—the Zeiss Kodak Anastigmat, *f.* 6.3, specially designed for hand camera work, and a high speed shutter, the Compound, that works with great precision. This shutter attains a speed of  $1/250$  second in the  $3\frac{1}{4} \times 4\frac{1}{4}$  size,  $1/200$  in the  $3\frac{1}{4} \times 5\frac{1}{2}$  and  $4 \times 5$  sizes and  $1/150$  second in the  $5 \times 7$  size.

This equipment cannot be surpassed. It not only provides a very high speed for rapidly moving objects, but it enables the operator to make pictures on dark days, indoors, and under generally unfavorable light conditions, where absolute failure would result from the use of the ordinarily equipped camera.



## FILMPLATE PREMO SPECIAL

These advantages are offered in a camera that takes films or plates with equal facility, and is as compact and easy to carry, as convenient to operate, as the average hand camera for films only. In addition this camera is provided with a ground glass which may be used for sharp focusing and accurate composing between each exposure, and this can be done with equal ease whether films or plates are used. This is an advantage which will appeal strongly to many, as it enables one to utilize to the fullest extent the microscopic definition of his anastigmat lens.

In keeping with the high grade of work for which this camera is designed, we have constructed and finished it in the best possible manner. The covering is a rich black morocco, the bellows black leather, and metal parts are handsomely nickelled, producing a most attractive combination.

Particular attention is called to the unusually low price of these cameras fitted with Cooke Kodak Anastigmat Lens, *f.* 6.3.

### SPECIFICATIONS

Capacity, 12 film or 2 plate exposures. Box, seasoned wood. Bed, aluminum. Rack and pinion for fine focusing. Front, rising and sliding. Finder, brilliant, reversible, collapsible. Tripod Sockets, two. Lens, Zeiss Kodak Anastigmat, *f.* 6.3. Shutter, Compound. Dimensions,  $3\frac{1}{4} \times 4\frac{1}{4}$ ,  $2\frac{1}{4} \times 4\frac{1}{8} \times 5\frac{3}{8}$  in.;  $3\frac{1}{4} \times 5\frac{1}{2}$ ,  $2\frac{1}{8} \times 4\frac{1}{8} \times 7\frac{1}{8}$  in.;  $4 \times 5$ ,  $2\frac{1}{4} \times 4\frac{7}{8} \times 6\frac{1}{8}$  in.;  $5 \times 7$ ,  $2\frac{5}{8} \times 6 \times 8\frac{3}{8}$  in. Weight,  $3\frac{1}{4} \times 4\frac{1}{4}$ , 26 ozs.;  $3\frac{1}{4} \times 5\frac{1}{2}$ , 36 ozs.;  $4 \times 5$ , 28½ ozs.;  $5 \times 7$ , 48 ozs.

### PRICES

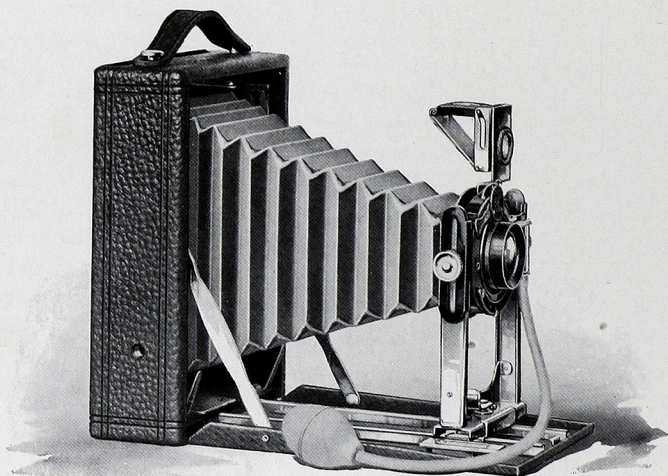
Filmplate Premo Special with Zeiss Kodak Anastigmat Lens, <i>f.</i> 6.3, and Com- pound Shutter, Film Pack Adapter and Plate Holder	$3\frac{1}{4} \times 4\frac{1}{4}$	$3\frac{1}{4} \times 5\frac{1}{2}$	$4 \times 5$	$5 \times 7$
Ditto, Cooke Kodak Anastig- mat Lens, <i>f.</i> 6.3	\$50.00	\$60.00	\$60.00	\$80.00
Ditto, Cooke Ser. III A, <i>f.</i> 6.5, Lens	40.00	45.00	45.00	
Ditto, B. & L. Zeiss Tessar Ser. II B, <i>f.</i> 6.3, Lens	61.00	67.50	67.50	90.00
Case, Velvet Lined	60.00	71.00	71.00	90.00
Kodak Autotime Scale (see page 7 for style)	2.75	3.00	3.00	4.00
Premo Film Pack	1.50	1.50	1.50	1.50
	.70	.80	.90	1.60





P R E M O

N U M B E R 8



**I**N the plate camera field Premos have always been pre-eminent in quality and dependability from the very beginning of amateur photography. They have been manufactured for over thirty years, upon the idea of giving the customer the very best possible values for money expended.

The Premo No. 8 is an excellent illustration of the application of this idea. Designed for the amateur who wants a convenient, dependable plate camera at a moderate price, it is so carefully made and so simple to operate that it will produce remarkably good results.

The shutter furnished with this camera is a modified form of the Kodak Ball Bearing, having all the precision and smooth action of that shutter, but working with bulb and tube instead of cable release. It is graduated for speeds of  $1/25$ ,  $1/50$  and  $1/100$  seconds, as well as for bulb and tube exposures. The regular lens supplied is the Planatograph. At a slight additional charge the  $3\frac{1}{4} \times 5\frac{1}{2}$  (post card) size is furnished with the Kodak Anastigmat lens, *f.* 7.7. This makes a remarkably efficient



## P R E M O N U M B E R 8

camera, with the microscopic definition and greater speed of the anastigmat, at a very small price.

The camera is made of seasoned wood, with front bed of aluminum and metal runways, making an instrument of unusual compactness for a plate camera.

The bed and box of the Premo No. 8 are covered with black leather, the bellows is black and the metal parts being finished in nickel, give the camera a neat, attractive appearance.

The standard is made of metal and is very rigid, a rising and falling front is supplied and the finder is of the new Premo collapsible type.

This model, of course, is provided with a ground glass for sharp focusing, and while it is intended primarily for plates, it can be loaded with films just as easily. By the use of a Premo Film Pack Adapter it can be converted into a compact, daylight loading film camera, perfectly suitable for the vacationist or for any occasion where the light weight and greater convenience of films would be desirable. It is really one camera which offers the advantage of two.

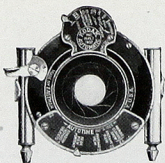
### SPECIFICATIONS

Capacity, 12 film or 2 plate exposures. Box, kiln-dried wood, covered with leather. Standard, made of metal, with rising and falling front. Carrying Case, imitation leather, with compartments for holders. Finder, reversible brilliant, collapsible. Tripod Sockets, two. Lens, Planatograph. Shutter, Kodak Ball Bearing with bulb and tube (see page 6). Dimensions,  $3\frac{1}{4} \times 5\frac{1}{2}$ ,  $2 \times 5 \times 7\frac{1}{4}$  in.;  $4 \times 5$ ,  $2 \times 5\frac{1}{4} \times 6\frac{1}{2}$  in.;  $5 \times 7$ ,  $2\frac{1}{4} \times 6\frac{1}{2} \times 8\frac{1}{2}$  in. Weight,  $3\frac{1}{4} \times 5\frac{1}{2}$ , 34 ozs.;  $4 \times 5$ , 30 ozs.;  $5 \times 7$ , 42 ozs.

### PRICES

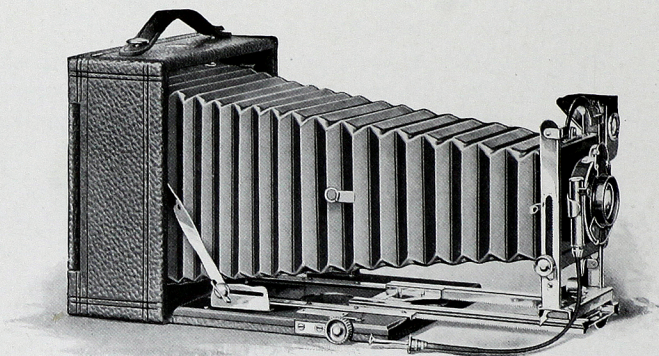
Premo No. 8, with Planatograph Lens, Kodak Ball Bearing Shutter, Carrying Case and Plate Holder	4x5	3A $3\frac{1}{4} \times 5\frac{1}{2}$	5x7
	\$12.00	\$14.00	\$18.00
Ditto, with Kodak Anastigmat Lens, f. 7.7		19.00	
Kodak Autotime Scale (See page 7 for style)	1.00	1.00	1.00
Premo Film Pack Adapter	1.50	1.50	2.50
Premo Film Pack (12 exposures)	.90	.80	1.60
Kodak Portrait Attachment	.50	.50	.50





P R E M O

N U M B E R 9



**T**HIS efficient camera is designed for the amateur who wishes an instrument of very wide scope. With its complete equipment and accurate, convenient mechanical adjustments, it is a camera never before approached at the price.

The Premo No. 9 is fitted with the new Premo reversible back. This is the simplest back to reverse ever offered, for with its patented spring lug construction, it may be instantly removed and reversed without any tendency to stick or bind.

The bellows is of black leather and has sufficient draw to permit the use of the single lens combination or a telephoto attachment of several magnifications. The extension plate is actuated by rack and pinion working with exceptional smoothness and provided with a simple locking device.

The standard is constructed of metal, is very rigid, and incorporates a rising and falling front of great latitude. This in connection with the swing bed construction makes it an easy matter to take pictures of tall buildings, and the like, without tipping the camera, with its attendant distortion of the picture. The lens board is removable and the finder is the new Premo collapsible brilliant.

The instrument is of the most substantial construction, all working parts operate with mechanical precision and it



## P R E M O N U M B E R 9

is finished in the most careful manner. The covering is of black leather, specially selected for its beautiful grain, the bed is finished in black and the metal parts are heavily nickeled.

The regular lens and shutter equipment comprises the Kodak Automatic shutter and Autotime scale and the Planatograph lens—a perfectly satisfactory equipment for everyday amateur photography. The single combination of the lens will produce sharp, clear pictures of objects at a distance, double the size made with the complete lens.

In the 3A and 4 x 5 sizes the camera is offered, at a slight increase in price, fitted with the new Kodak Anastigmat lens, *f.* 7.7. For those who wish an Anastigmat of even greater speed it is supplied with the Cooke Kodak Anastigmat lens working at *f.* 6.3 and the Compound shutter with cable release.

Like all Premo plate cameras the Premo No. 9 takes films or plates with equal facility.

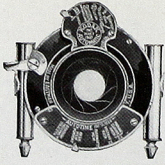
### SPECIFICATIONS

Capacity, 12 film or 2 plate exposures. Box, kiln-dried wood, covered with fine grain leather. Bed, hand polished wood, finished in black, and supplied with rack and pinion for fine focusing, and swing arrangement. Back, spring catch, reversible. Stand-ard, made of metal, with rising and falling front. Finder, brilliant reversible, collapsible. Tripod Socket, one. Lens, Planatograph. Shutter, Kodak Automatic (see page 7). Carrying Case, sole leather, with compartments for holders. Bellows, black leather; draw  $3\frac{1}{4} \times 5\frac{1}{2}$ , 13 in.; 4 x 5, 13 in.; 5 x 7,  $15\frac{1}{4}$  in. Dimensions,  $3\frac{1}{4} \times 5\frac{1}{2}$ ,  $3 \times 7 \times 7$  in.; 4 x 5,  $3 \times 7 \times 7$  in.; 5 x 7,  $2\frac{7}{8} \times 8\frac{1}{4} \times 8\frac{1}{4}$  in. Weight,  $3\frac{1}{4} \times 5\frac{1}{2}$ , 63 ozs.; 4 x 5, 63 ozs.; 5 x 7, 76 ozs.

### PRICES

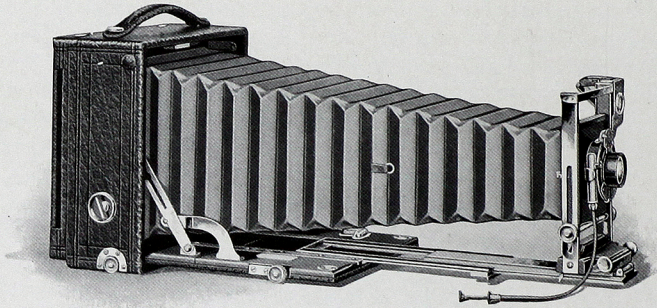
Premo No. 9, with Planatograph			
Lens, Kodak Automatic Shut-		3A	
ter with Kodak Autotime Scale,	4x5	$3\frac{1}{4} \times 5\frac{1}{2}$	5x7
Case and Holder - - -	\$28.00	\$28.00	\$33.00
Ditto, with Kodak Anastigmat Lens,			
<i>f.</i> 7.7 - - - - -	33.00	33.00	
Ditto, with Cooke Kodak Anastig-			
mat Lens, <i>f.</i> 6.3, and Com-			
pound Shutter with cable re-			
lease - - - - -	51.00	51.00	
Ditto, with Zeiss Kodak Anastigmat			
Lens, <i>f.</i> 6.3, and Compound			
Shutter - - - - -	62.50	62.50	81.50
Premo Film Pack Adapter - -	1.50	1.50	2.50
Premo Film Pack (12 exposures)	.90	.80	1.60
Kodak Portrait Attachment - -	.50	.50	.50





P R E M O

N U M B E R 10



**D**ESIGNED to meet the requirements of the most advanced photographer and of the specialist in photographic work, the Premo No. 10 is equipped with every known adjustment desirable in a hand camera for making pictures under all conditions.

The bellows is of such length as to readily accommodate the single combinations of any lens system, and also to meet the capacity requirements of telephoto lenses of the highest magnifications. This feature is also a valuable one in the processes of enlarging, copying and portraiture.

Provision is made for the use of lenses of the widest angle. For this purpose, it is necessary only to unclasp the two supplementary side arms, which drops the bed down on a hinge, removing it from the path of the shortest focus lens. Then a short supplementary bed, carried conveniently at the top of the camera when not in use, is substituted for the regular bed, affording easy focusing facilities.

The movable extensions are constructed entirely of metal, are actuated by a single pinion and attached to the wooden bed by metal angle pieces, making the operation impervious to changing atmospheric conditions. The swing back is actuated by rack and pinion, with locking device, as is also the rising and falling front. The standard clamp is automatic.



## P R E M O   N U M B E R   10

The camera is regularly fitted with the Planatograph lens—the best obtainable aside from the anastigmat, but it is constructed with the view of accommodating anastigmat lenses of any kind when desired. The regular shutter is the reliable Kodak Automatic fitted with Kodak Autotime Scale. This scale automatically indicates the proper time and stop opening for all outdoor exposures.

The finish and general workmanship of the instrument must be seen to be appreciated. The shutter and all metal parts are highly nicked and the covering is of the best leather, especially selected for its beautiful grain. The wood is mahogany with hand polished black finish. The carrying case is of sole leather, lined with purple velvet.

With all these advantages the Premo No. 10 can be successfully used even by the beginner. Its special features do not have to be reckoned with excepting when needed, and the Premo adapter will convert it at any time into a daylight loading film camera. The camera is made in the 5 x 7 size only.

### S P E C I F I C A T I O N S

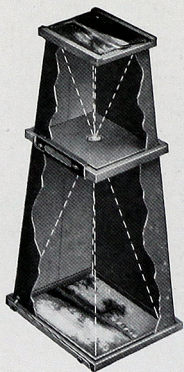
Capacity, 12 film or 2 plate exposures. Box, mahogany, leather covered. Bed, mahogany, with highly polished black finish and with triple extension runway. Back, spring catch, reversible. Swing, vertical; rack and pinion actuated, with locking device. Front, rising and falling; rack and pinion actuated, with locking device. Lens Board, removable; size  $3\frac{1}{2} \times 3\frac{1}{2}$  in. Finder, Brilliant, reversible. Tripod Sockets, two. Lens, Planatograph. Shutter, Kodak Automatic with Autotime Scale (see page 7). Carrying Case, sole leather, plush lined, with compartment for holders. Bellows, black leather; draw, 19 in. Dimensions,  $4 \times 8\frac{1}{2} \times 8\frac{1}{2}$  in. Weight,  $5 \times 7$ ,  $5\frac{1}{2}$  lbs. Automatic Standard Clamp.

### P R I C E S

Premo No. 10, with Planatograph Lens and Kodak Auto. Shutter with Autotime Scale, Carrying Case and Plate Holder - - - - -	5x7 \$ 60.00
With Zeiss Kodak Anastigmat Lens, <i>f.</i> 6.3, and Compound Shutter - - - - -	109.00
With B. & L.-Zeiss Protar VIIa Lens, <i>f.</i> 7, and Compound Shutter - - - - -	141.00
Premo Film Pack Adapter - - - - -	2.50
Premo Film Pack - - - - -	1.60
Kodak Autotime Scale for Compound Shutter (See page 7 for style) - - - - -	1.50



## BROWNIE ENLARGING CAMERA



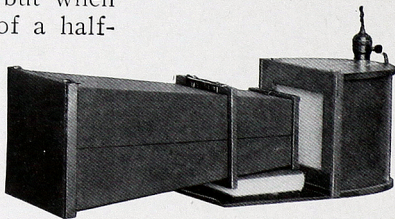
With one of these cameras it's just as easy to make first-class enlargements as it is to print on Velox paper. In fact, the two processes are very much the same excepting that, in ordinary printing, the negative and paper are in contact, while in enlarging, the paper is at some distance from the negative, with a lens in between. The Improved Brownie Enlarging Camera consists of a light-tight cone with attachments to hold a negative at the small end, and a sheet of Bromide or Velox paper at the other. They are collapsible and made in two sections, the lens support holding them firmly together when in use. Exposures may be made to the sky or the Brownie Illuminator described below may be used.

No. 2 Brownie Post Card Enlarging Camera for post card ( $3\frac{1}{4} \times 5\frac{1}{2}$ ) enlargements from $2\frac{1}{4} \times 3\frac{1}{4}$ negatives - - - - -	\$1.75
No. 2 Brownie Enlarging Camera, for $5 \times 7$ enlargements from $2\frac{1}{4} \times 3\frac{1}{4}$ negatives - - - - -	2.00
No. 3 Ditto, for $6\frac{1}{2} \times 8\frac{1}{2}$ enlargements from $3\frac{1}{4} \times 4\frac{1}{4}$ negatives - - - - -	3.00
No. 4 Ditto, for $8 \times 10$ enlargements from $4 \times 5$ negatives (will also take $3\frac{1}{4} \times 5\frac{1}{2}$ negatives) - - - - -	4.00

## BROWNIE ILLUMINATOR

A very convenient device, providing a strong, even light by which to print with the Brownie Enlarging Camera. It is collapsible, but when set up, has the form of a half-round, light-proof box with socket through which is inserted an electric light bulb.

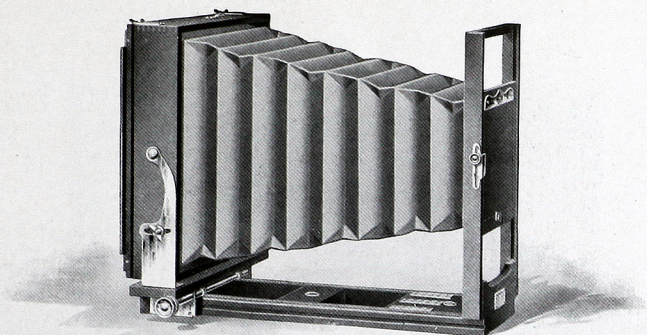
The inner walls of this box are white and act as a reflector when the light is turned on. At the end is a ground glass, which diffuses the light, so that by placing negative end of the enlarging camera in contact with this glass and turning on the electricity, an excellent steady printing light is obtained.



Brownie Enlarging Camera Illuminator - - - - -	\$3.00
--	--------



# T H E R . O . C . V I E W



**A**N inexpensive, reliable view camera for those who do not require extra long bellows capacity. It is especially adapted for interior work as it focuses from the rear only, and the back may be moved as close to the front as desired so that extreme wide angle lenses may be used.

The front board is so wide that stereoscopic lenses may be used, and the standard is strong and rigid, affording a safe support for the heaviest lenses.

The back is supplied with horizontal and vertical cut out boards, so that four pictures may be made on one plate if desired. Vertical and horizontal swings, rising and falling front and reversible back are provided. The camera is strongly built for service and will last indefinitely. It folds up compactly when not in use.

The R. O. C. View Outfit offers a most complete and satisfactory equipment for general purposes at a moderate price.

## SPECIFICATIONS

Bellows Draw, 5 x 7, 14 in.; 6½ x 8½, 15½ in.; 8 x 10, 17 in. Weight, 5 x 7, 4¾ lbs.; 6½ x 8½, 6 lbs.; 8 x 10, 6¾ lbs. Size of Lens Board, 5 x 7, 3¾ x 6¾ in.; 6½ x 8½, 4½ x 6½ in.; 8 x 10, 5 x 6 in. Carrying Case, square style canvas.

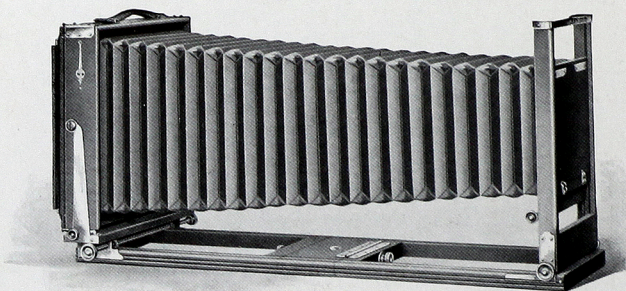
## PRICES

	5x7	6½x8½	8x10
R. O. C. View with Case and Holder	\$12.00	\$13.00	\$14.00
R. O. C. View Complete Outfit* -	27.00	35.00	42.00
Extra Carrying Case, Regular -	1.75	2.00	2.25

\*R. O. C. Complete Outfit includes: R. O. C. View Camera, Symmetrical Lens and D. V. Auto Shutter, six Plate Holders, Combination Tripod, R. O. C. Focusing Cloth, and Carrying Case holding complete outfit.



## EASTMAN VIEW No. 1 IMPROVED MODEL OF EMPIRE STATE



AS an inexpensive view camera, suitably equipped for all-around commercial work, the Eastman View No. 1 is without question the best value ever offered.

The camera is made of best quality cherry with mahogany finish. Metal parts are of polished brass, and corners are dovetailed and reinforced by metal angle pieces.

It has no complications, but is built for practical service, and its various adjustments are such as to work conveniently and easily.

It has double extensions and both front and back are actuated by rack and pinion, so that the camera may be focused from either end, and the back can be racked up as close to the front as desired. This provides for the use of lenses of the widest angle. The camera has rising and falling front, actuated by rack and pinion, and this can be locked solidly at any point by merely pushing in the pinion. The front board is removable and is large enough to accommodate any lens.

Both horizontal and vertical swings are provided, and the back is reversible and furnished with a vertical cut-off board, so that two negatives may be made on one plate, if desired.

A strap handle and plumb level are supplied and an automatic bellows support which prevents sagging of the bellows at any time.

The price includes one double plate holder and canvas carrying case. This case is of the combination style, with three compartments in the bottom; one for the camera,



# EASTMAN VIEW No. 1

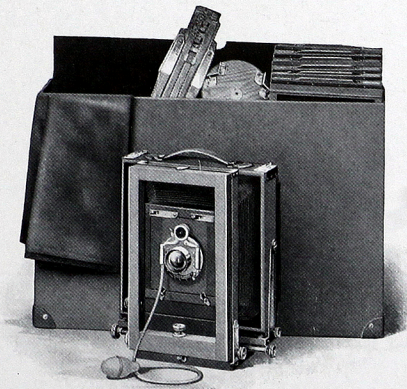
one for plate holders and the other for focusing cloth, lenses or other accessories. On top of these is an extra compartment for carrying the tripod.

The case is strongly made, with corners reinforced, and full length straps of the best leather.

Particular attention is called to the Eastman View No. 1 Complete Outfits. Never before has so much real view camera efficiency been offered for so small an outlay.

For those who want larger size view cameras we will furnish the regular

Empire State model in the 11 x 14 size with carrying case and one plate holder for \$45.00.



## SPECIFICATIONS

Bellows Draw, 5 x 7, 22½ in.; 6½ x 8½, 26 in.; 8 x 10, 29 in. Weight, 5 x 7, 6 lbs.; 6½ x 8½, 8 lbs.; 8 x 10, 9½ lbs. Size of Lens Board, 5 x 7, 4¼ x 4¼ in.; 6½ x 8½, 4¾ x 4¾ in.; 8 x 10, 4¾ x 4¾ in. Carrying Case, long style canvas, combination style, with compartment for camera, holders and tripod.

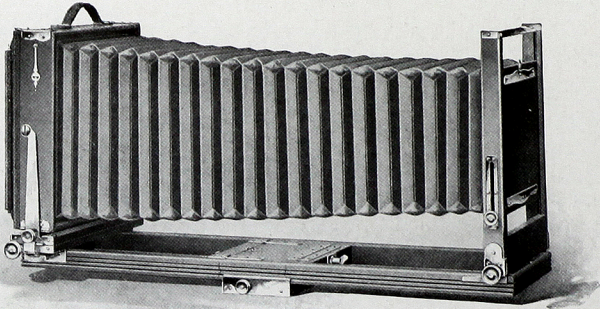
## PRICES

Eastman View No. 1 (improved model of Empire State) with Case and Holder - - -	5x7 \$19.00	6½x8½ \$21.00	8x10 \$23.00
Eastman View No. 1 Complete Outfit* - - -	34.00	43.00	51.00
Complete Outfit as above, but with Rapid Rectigraphic instead of Symmetrical Lens - - -	45.00	55.00	65.00
Extra Carrying Case - - -	3.50	3.75	4.00
Extra Lens Board - - -	.30	.40	.50

\*Eastman View No. 1 Complete Outfit includes: Eastman View No. 1 Camera, Symmetrical Lens, Double Valve Auto Shutter, six Plate Holders, Combination Tripod, R. O. C. Focusing Cloth, and Case to hold complete outfit.



## EASTMAN VIEW No. 2 IMPROVED MODEL OF EMPIRE STATE



ALL our experience in view camera making, all the information that we have been able to collect, of the needs of the view camera worker, have been put into the proposition of providing in this new model a view camera as near to perfection as human ingenuity can devise.

It has all the good points of the famous old Empire State, with important additional features which leave nothing to be desired in view camera work, however exacting it may be.

The camera is constructed with the idea of providing the greatest possible solidity and strength throughout. The extensions are extra thick, the standard is very large and will furnish an absolutely rigid support for the heaviest lenses. Corners are dovetailed and reinforced by brass angle pieces, and the metal parts are all made of the best quality of brass, fully lacquered.

The front board is removable and very large. The rising and falling front is actuated by rack and pinion, as are both the horizontal and vertical swings. The camera can be focused from both front and rear by rack and pinion, so that the back can be racked up as close to the front as desired. Thus lenses of the widest angle can be used. A sliding tripod block is provided so that the camera can always be supported directly above the tripod or the weight distributed, as the operator may wish.

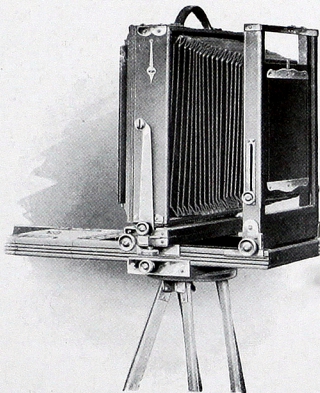
The back is reversible, a plumb level and strap handle are supplied and both horizontal and vertical cut-off



## EASTMAN VIEW No. 2

boards are furnished so that four different negatives can be made on one plate if desired. The bellows of this camera is made of genuine leather and a spring arrangement working automatically prevents it from sagging at any time.

The method of locking extensions is very convenient, not by means of the old-fashioned, long threaded screw, but by a specially constructed device which locks firmly by merely being pushed in and given a quarter turn. The back extension, which is detachable, in addition to this device is further strengthened by two clamp catches which hold it absolutely rigid.



The camera is made of hand-polished mahogany, with exception of the extensions, which are of cherry on account of its greater strength.

### SPECIFICATIONS

Bellows Draw, 5 x 7, 23 in.; 6½ x 8½, 26½ in.; 8 x 10, 29½ in. Weight, 5 x 7, 7 lbs.; 6½ x 8½, 10½ lbs.; 8 x 10, 11¼ lbs. Size of Lens Board, 5 x 7, 4½ x 4½ in.; 6½ x 8½, 6 x 6 in.; 8 x 10, 6 x 6 in. Carrying Case, canvas, combination style, with compartments for camera, holders and tripod. All operating nuts on the right side, binding nuts on the left hand side.

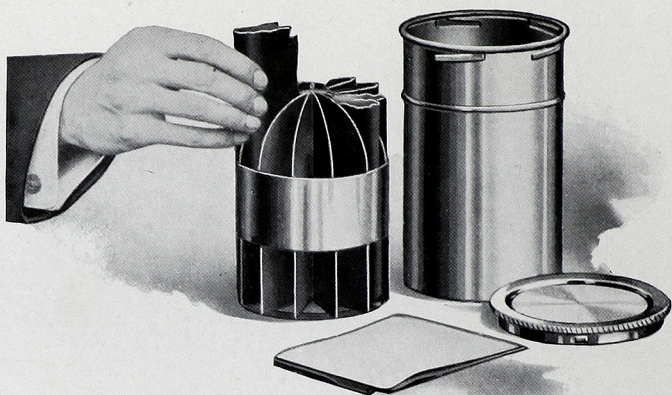
### PRICES

Eastman View No. 2 (improved model of Empire State) with Case and Holder - - -	5x7	6½x8½	8x10
	\$25.00	\$28.00	\$30.00
Eastman View No. 2 Complete Outfit* - - - - -	40.00	50.00	58.00
Complete Outfit as above, but with Rapid Rectigraphic instead of Symmetrical Lens - - -	51.00	62.00	72.00
Extra Carrying Case - - -	4.00	4.50	5.00
Extra Lens Boards - - -	.60	.75	.75

\*Eastman View No. 2 Complete Outfit includes: Eastman View No. 2 Camera, Symmetrical Lens, Double Valve Auto Shutter, six Plate Holders, Combination Tripod, R. O. C. Focusing Cloth, and Case to hold complete outfit. See illustration similar outfit page 31.



## PREMO FILM PACK TANK



THOSE who use the Premo Film Pack need never give a thought to development, for if they will use the Premo Film Pack Tank they can absolutely know that every pack they expose is certain to be perfectly developed, provided they follow the simple directions for use of the tank. This means that the merest beginner, without any need of skill or help, can get as good results in development as the most expert photographer.

For the tank is simplicity itself. It requires no experience, no lengthy manipulation in a close dark-room. And we recommend the tank system to the most careful workers as being infinitely simpler than the older method and producing results superior to those which can be obtained by the most painstaking tray development.

The Premo Film Pack Tank consists of two pieces—a metal receiver or cage for the films, and a tank with cover for the developing fluid. The entire outfit is self-contained and can be easily carried in a corner of a suitcase.

The cage is divided into twelve compartments—in the 5 x 7 size, six—each accommodating one film. As the film is taken from the pack it is held between the thumb and fingers, slightly bent from top to bottom, and slipped into its respective compartment. When all the compartments are filled, the cage is placed in tank, which has been



## PREMO FILM PACK TANK

previously filled with developer, the top replaced and the films left to develop for a certain specified time. No further attention is necessary except to turn the tank end for end several times during the progress of development.

At the expiration of the full time, open the tank, take out the cage, remove films, place them in a tray of water for a moment, then transfer to the fixing bath. Development is completed. Rinse out cage and tank and set them aside.

The operation of removing films from the pack and loading the cage is done, of course, in a darkened room by the light of a ruby lamp. During the day any darkened closet will suffice; at night any dark room in which the shades are drawn will answer. To load the films in cage will take only two or three minutes, and as soon as the top is placed on tank it may be brought out into any light and left until development is completed. And night is really an ideal time to develop films, as they can be fixed and washed in a short time and will dry over night, being all ready to print from in the morning.

If it is desired to develop less than a dozen films, one merely removes from his pack as many films as have been exposed, places them in the cage, and proceeds in the same manner as described above.

The cage of the No. 1 Tank is slightly different from that shown in the illustration, but the method of loading is the same and, of course, the results are just as dependable in every respect.

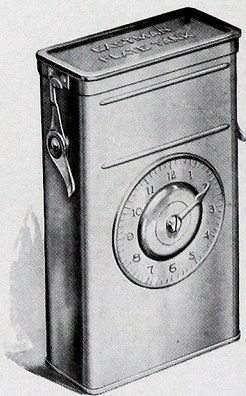
### PRICES

Premo Film Pack Tank No. 1, for 12 $1\frac{3}{4} \times 2\frac{3}{8}$ or $2\frac{1}{4} \times 3\frac{1}{4}$ films - - - - -	\$1.25
Ditto, No. 2 for 12 $2\frac{1}{2} \times 4\frac{1}{4}$ , $3\frac{1}{4} \times 4\frac{1}{4}$ , $3 \times 5\frac{1}{4}$ , $3\frac{1}{4} \times 5\frac{1}{2}$ or $4 \times 5$ films - - - - -	3.50
Ditto, No. 3, for 6 $5 \times 7$ films - - - - -	4.00
Premo Tank Developing Powders, in packages of 6, No. 1	.20
Premo Tank Developing Powders, in packages of 6, No. 2	.25
Premo Tank Developing Powders, in packages of 6, No. 3	.35
Kodak Acid Fixing Powder, per 1 pound package -	.25
Ditto, per $\frac{1}{2}$ pound package - - - - -	.15
Ditto, per $\frac{1}{4}$ pound package - - - - -	.10



# EASTMAN PLATE TANK

**I**N the Eastman Plate Tank, plates may be developed in the same manner and with the same assurance of excellent results as may films developed in the Premo Film Pack Tank. The theory of construction is precisely the same, with of course such differences as are necessary because of the physical differences between films and plates.



It consists of a metal solution cup, a cage for holding twelve (or less) plates and a loading fixture for loading plates into the cage. In the  $3\frac{1}{4} \times 4\frac{1}{4}$ ,  $3\frac{1}{4} \times 5\frac{1}{2}$  and  $4 \times 5$  sizes, the cage of plates may be developed in a Premo Film Pack Tank, so that one using a Premo that takes films or plates and having a Premo Film Pack Tank needs only to purchase the cage and loading fixture of the plate tank for the development of his plates, an advantage in economy. It is thus ap-

parent that the owner of a Premo plate camera can not only use films or plates in his camera with equal facility, but he can also avail himself of the advantages of tank development with either medium.

## PRICES

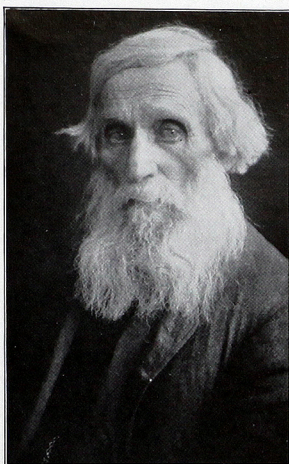
Eastman Plate Tank for $4 \times 5$ , $3\frac{1}{4} \times 5\frac{1}{2}$ or smaller plates, includes Solution Cup, Plate Cage, Loading Fixture and Adjustable Kit	- - - - -	\$ 3.50
Ditto, $5 \times 7$ , without Kit	- - - - -	4.50
Ditto, $8 \times 10$ , with Adjustable Kit	- - - - -	10.00
Adjustable Kit for $4 \times 5$ or $3\frac{1}{4} \times 5\frac{1}{2}$ Tank, to take smaller plates	- - - - -	.50
Kits for $5 \times 7$ Tank, to take $3\frac{1}{4} \times 5\frac{1}{2}$ , $4\frac{1}{4} \times 6\frac{1}{2}$ or $4\frac{3}{4} \times 6\frac{1}{2}$ plates, each	- - - - -	.75
Extra Adjustable Kit for $8 \times 10$ Plate Tank	- - - - -	1.00
Plate Cage and Loading Fixture for $4 \times 5$ and $3\frac{1}{4} \times 5\frac{1}{2}$ plates (can be used in a $4 \times 5$ Premo Film Pack Tank)	- - - - -	1.10
Eastman Plate Tank Powders, for $4 \times 5$ Tank, per package $\frac{1}{2}$ dozen	- - - - -	.20
Ditto, for $5 \times 7$ Tank, per package, $\frac{1}{2}$ dozen	- - - - -	.35
Ditto, for $8 \times 10$ Tank, per package, $\frac{1}{2}$ dozen	- - - - -	.50
Kodak Acid Fixing Powder, per 1-pound package	- - - - -	.25
Ditto, per $\frac{1}{2}$ -pound package	- - - - -	.15
Ditto, per $\frac{1}{4}$ -pound package	- - - - -	.10



# PREMO ACCESSORIES

## THE KODAK PORTRAIT ATTACHMENT

This is simply an extra lens which fits on in front of the regular lens and in no way affects the operation of the camera, excepting to so change the focus as to permit working close to the subject, thereby giving good sized head and shoulder portraits. Not supplied for cameras larger than 5 x 7. Order by number.



Made with Pocket Premo C and  
Kodak Portrait Attachment  
(Reduced)

No. 0. For Premo Jrs.  
No. 1 and No. 1A - \$ .50

No. 3. For  $3\frac{1}{4} \times 4\frac{1}{4}$  Film  
Premo No. 1;  $3\frac{1}{4} \times 4\frac{1}{4}$   
Pocket Premo C; Premoette Jr. No. 1A, both  
single and double lens;  
 $2\frac{1}{2} \times 4\frac{1}{4}$  Premoette Sr.;  
Premo Jrs. Nos. 3 and 4 .50



No. 5. For all 4 x 5, 3A and 5 x 7  
Premos Nos. 8, 9 and 10; all sizes  
of Filmplate Premos; 3A Pocket  
Premo C; 3A Premoette Sr.; 3A  
and 4 x 5 Film Premo No. 1 - \$ .50  
No. 6. For Premoette Jr. No. 1A  
Special - - - - .50  
No. 7. For 3A Filmplate Premo  
Special - - - - .50  
No. 8. For Premoette Jr. No. 1, with  
both single and double lens - - .50

## KODAK COLOR FILTERS

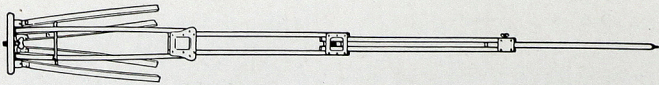
These are mounted in the same manner as the Kodak Portrait Attachment. Please order by number.

No. 0. For Premo Jrs. Nos. 1 and 1A - - - - \$ .50  
No. 3. For  $3\frac{1}{4} \times 4\frac{1}{4}$  Film Premo No. 1;  $3\frac{1}{4} \times 4\frac{1}{4}$  Pocket  
Premo C; Premoette Jr. No. 1A, both single and  
double lens; Premo Jrs. Nos. 3 and 4 - - - - .75  
No. 5. For all 4 x 5, 3A and 5 x 7 Premos Nos. 8, 9 and  
10; all sizes of Filmplate Premos; 3A Pocket C; 3A  
and 4 x 5 Film Premo No. 1 - - - - 1.00  
No. 6. For Premoette Jr. No. 1A Special - - - - .75  
No. 7. For 3A Filmplate Premo Special - - - - 1.00  
No. 8. For Premoette Jr. No. 1, with both single and  
double lens - - - - .50



# P R E M O T R I P O D S

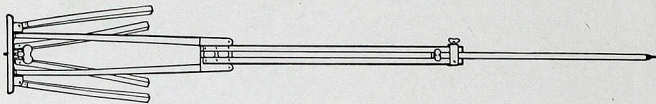
## CROWN TRIPOD



Made in four sections, of selected cherry. Very rigid.

Style.	Folded.	Extended.	Weight.	Price.
No. 1	16¼ inches	4 1/3 feet	36 ozs.	\$5.50
No. 2	17¼ inches	4 2/3 feet	65 ozs.	6.00
No. 3	20 inches	5 1/2 feet	70 ozs.	7.50

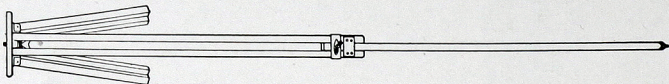
## COMBINATION TRIPOD



This tripod is made on the sliding and folding principle. The wood parts are of ash and the finish is of the very best.

Style.	Size of Camera.	Weight.	Price.
No. 2½	6½ x 8½ and smaller	3 lbs.	\$3.00
No. 3	8 x 10 and 10 x 12	4 lbs.	3.50
No. 4	11 x 14 and 14 x 17	5 lbs.	4.50
No. 5	17 x 20 and 20 x 24	8 lbs.	6.00

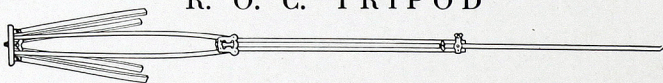
## SLIDING TRIPOD



A perfectly rigid tripod for the heaviest cameras. The No. 1 and No. 2 are made of spruce, the No. 3 and No. 4 of ash.

Style.	Size of Camera.	Weight.	Price.
No. 1	5 x 7 and smaller	2 lbs.	\$2.00
No. 2	5 x 8 and 6½ x 8½	2 lbs. 8 ozs.	2.50
No. 3	8 x 10 and 10 x 12	4 lbs. 8 ozs.	3.00
No. 4	11 x 14 and 14 x 17	6 lbs. 8 ozs.	4.00

## R. O. C. TRIPOD



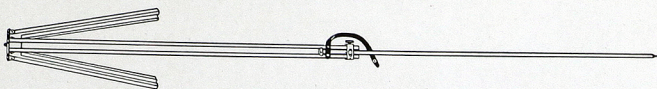
The R. O. C. Tripod is of the combination type and is for use with any camera up to and including the 5 x 7 size. It is made of maple.

Weight, 32 ozs. Length, 22 to 57 in. Price, \$1.70



# P R E M O T R I P O D S

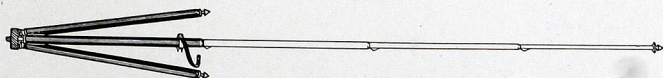
## FLEXO TRIPOD



For cameras up to and including the 5 x 7 size this is a very satisfactory tripod at small expense. Only clear, straight grained spruce is used in its construction.

Weight, 16 ozs. Length, 29 to 54 in. Price, 90 cents

## KODAK METAL TRIPOD



Combining light weight and compactness with exceptional rigidity, this is an ideal tripod for cameras up to 5 x 7.

Has telescoping legs of brass tubing—lower sections nicked, the upper black enameled—and should a part become inoperative through wear or accident, any section may be removed for repairs. This is a unique feature among metal tripods.

When extended each section catches and holds firmly. To close, it is necessary to press in top catch only, the others then releasing automatically.

The Nos. 1 and 2 have revolving heads for attaching to camera. With this construction the camera may be swung, so as to take in the desired view without moving the tripod, a distinct advantage over other types of metal tripods.

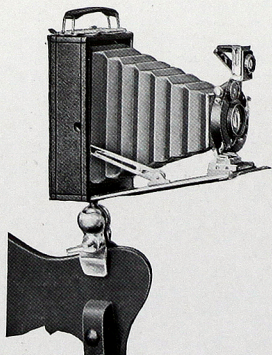
The Nos. 1 and 2 also have straps for holding the legs in place when closed.

		Sections.	Closed.	Length Extended.	Weight.	Price.
Kodak Metal Tripod						
No. 0	-	3	15½ in.	39½ in.	15 ozs.	\$1.60
Kodak Metal Tripod						
No. 1	-	4	15 in.	48½ in.	24½ ozs.	2.50
Kodak Metal Tripod						
No. 1C	-		15¼ in.	48⅞ in.	25½ ozs.	2.25
Kodak Metal Tripod						
No. 2	-	5	13½ in.	49½ in.	25 ozs.	3.25
Kodak Metal Tripod						
No. 2C	-		13¾ in.	49⅞ in.	26 ozs.	3.00
Leatherette Case for No. 0	-	-	-	-	-	.75
Leather Carrying Case for any style	-	-	-	-	-	1.50



## PREMO ACCESSORIES

### THE UNIVERSAL CLAMP



The Universal Clamp is a small, convenient substitute for a tripod which may be attached to any camera. It can be carried readily in the pocket, is very light, and may be attached to a chair, fence, automobile or motorcycle handle bar. The clamp jaws are padded with felt.

Price - - - - \$ .75

### EASTMAN TRIPOD BRACE

An exceedingly simple device for holding the tripod legs in position when extended. Cannot collapse.

Eastman Tripod Brace - - - Price, \$1.00

### R. O. C. TRIPOD TRUCK

An excellent device for those who use a tripod indoors. Perfectly solid when extended, supplied with casters and folds compactly when not in use.

R. O. C. Tripod Truck	}	No. 1 for average tripods	-	\$1.00
		No. 2 for very heavy tripods	-	1.25

### B. & L.-ZEISS PROTAR LENS—SERIES V, f. 18

Designed for extreme wide-angle work, this lens embraces a field of 110 degrees.

No.	Size.	Equivalent Focus.	Price.
1 - - - -	4¼ x 6½	3⅝ inches	\$20.00
2 - - - -	5 x 7	4⅞ inches	20.00
3 - - - -	6½ x 8½	5⅞ inches	25.00
4 - - - -	8 x 10	7⅞ inches	31.00

### SYMMETRICAL WIDE-ANGLE LENS

Has an angle of about 80 degrees and is furnished in cells to interchange with the various lenses supplied on Premo Cameras.

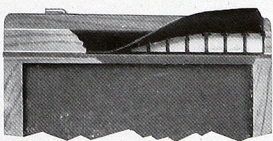
No.	Size.	Equivalent Focus.	Price. in Cells Only.
1 - - - -	4 x 5	3½ inches	\$ 5.00
2 - - - -	5 x 7	5 inches	7.50
3 - - - -	6½ x 8½	6½ inches	12.00
4 - - - -	8 x 10	8 inches	15.00



# P R E M O   A C C E S S O R I E S

## P R E M O   P L A T E   H O L D E R

Premo holders are made absolutely light tight by a fully patented light-lock. This device is shown in cut and is constructed of finely tempered, non-corrosive metal with independently operating spring fingers overlaid with a closely woven, specially prepared fabric. A slide can be inserted cornerwise without admitting light to the plate. Fitted with lacquered press-board slides that will not electrify, collect dust, crack or split.



$3\frac{1}{4} \times 4\frac{1}{4}$	-	\$1.00	$4 \times 5$	-	\$1.00	$6\frac{1}{2} \times 8\frac{1}{2}$	-	\$1.75
$3\frac{1}{4} \times 5\frac{1}{2}$	-	1.00	$5 \times 7$	-	1.25			

## E A S T M A N   V I E W   H O L D E R

These holders are made with bottom flap, avoiding all danger of plates falling out. They are strongly constructed, have patented spring finger light-lock, and made to fit both models of the Eastman View Camera. Slides are of lacquered press-board.

$5 \times 7$	-	\$1.00	$6\frac{1}{2} \times 8\frac{1}{2}$	-	\$1.10	$8 \times 10$	-	\$1.25
--------------	---	--------	------------------------------------	---	--------	---------------	---	--------

## U N I V E R S A L   P L A T E   H O L D E R

Made in the same style as the Eastman View Holder but to fit Empire State and Premo View Cameras.

$5 \times 7$	-	\$1.00	$8 \times 10$	-	\$1.25	$14 \times 17$	-	\$5.00
$6\frac{1}{2} \times 8\frac{1}{2}$	-	1.10	$11 \times 14$	-	4.00			

## E A S T M A N   P O R T R A I T   F I L M   H O L D E R S

For use with portrait films, to fit Eastman View, Universal and Premo View Cameras.

$5 \times 7$	-	\$1.00	$8 \times 10$	-	\$1.25	$11 \times 14$	-	\$4.00
$6\frac{1}{2} \times 8\frac{1}{2}$	-	1.10						

## R. O. C.   P L A T E   H O L D E R

This holder is of good construction, it has the patented light trap feature of Premo holders, and is adapted for use in the R. O. C. View Camera.

$5 \times 7$	-	\$1.00	$6\frac{1}{2} \times 8\frac{1}{2}$	-	\$1.10	$8 \times 10$	-	\$1.25
--------------	---	--------	------------------------------------	---	--------	---------------	---	--------

## P L A T E   H O L D E R   A N D   A D A P T E R   S L I D E S

### L A C Q U E R E D   P R E S S B O A R D

$3\frac{1}{4} \times 4\frac{1}{4}$	-	\$ .20	$5 \times 7$	-	\$ .25	$8 \times 10$	-	\$ .40
$3\frac{1}{4} \times 5\frac{1}{2}$	-	.20	$6\frac{1}{2} \times 8\frac{1}{2}$	-	.30	$11 \times 14$	-	.60
$4 \times 5$	-	.20						

### H A R D   R U B B E R

$5 \times 7$	-	\$ .35	$6\frac{1}{2} \times 8\frac{1}{2}$	-	\$ .50	$8 \times 10$	-	\$ .65
--------------	---	--------	------------------------------------	---	--------	---------------	---	--------



# PREMO ACCESSORIES

## PLATE HOLDER KITS

Size Outside.	Size of Opening for Plate.	Price.
4 x 5	3 $\frac{1}{4}$ x 4, 3 $\frac{1}{4}$ x 4 $\frac{1}{4}$ - - - -	\$ .20
5 x 7	3 $\frac{1}{4}$ x 4, 3 $\frac{1}{4}$ x 4 $\frac{1}{4}$ , 3 $\frac{1}{4}$ x 5 $\frac{1}{2}$ , 4 x 5, 4 $\frac{1}{4}$ x 6 $\frac{1}{2}$	.25
6 $\frac{1}{2}$ x 8 $\frac{1}{2}$	3 $\frac{1}{4}$ x 4 $\frac{1}{4}$ , 4 x 5, 3 $\frac{1}{4}$ x 5 $\frac{1}{2}$ , 4 $\frac{1}{4}$ x 6 $\frac{1}{2}$ , 4 $\frac{3}{4}$ x 6 $\frac{1}{2}$ , 5 x 7 - - - -	.30
8 x 10	4 $\frac{1}{4}$ x 6 $\frac{1}{2}$ , 4 $\frac{3}{4}$ x 6 $\frac{1}{2}$ , 5 x 7, 6 $\frac{1}{2}$ x 8 $\frac{1}{2}$ - - - -	.40
11 x 14	6 $\frac{1}{2}$ x 8 $\frac{1}{2}$ , 8 x 10, 10 x 12 - - - -	.50
14 x 17	10 x 12, 11 x 14 - - - -	.80

## PREMO FILM PACK ADAPTERS

Adapters are regularly carried in stock for all Premo and Poco cameras up to and including the 5 x 7 size.

Size.	Price.	Size.	Price.
3 $\frac{1}{4}$ x 4 $\frac{1}{4}$ - - -	\$1.00	4 x 5 - - -	\$1.50
3 x 5 $\frac{1}{4}$ - - -	1.50	5 x 7 - - -	2.50
3A (3 $\frac{1}{4}$ x 5 $\frac{1}{2}$ ) - -	1.50		

## PREMO FILM PACKS

Twelve exposures in each pack.

Size.	Price.	Size.	Price.	Size.	Price.
1 $\frac{3}{4}$ x 2 $\frac{3}{8}$ -	\$ .25	3 $\frac{1}{4}$ x 4 $\frac{1}{4}$ -	\$ .70	4 x 5 -	\$ .90
2 $\frac{1}{4}$ x 3 $\frac{1}{4}$ -	.40	3 x 5 $\frac{1}{4}$ -	.75	5 x 7 -	1.60
2 $\frac{1}{2}$ x 4 $\frac{1}{4}$ -	.50	3A (3 $\frac{1}{4}$ x 5 $\frac{1}{2}$ ) -	.80		

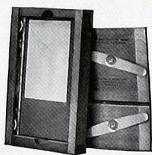
## GLASS DRY PLATES

Seed, Standard or Stanley.

Size.	Price per Dozen.	Size.	Price per Dozen.	Size.	Price per Dozen.
3 $\frac{1}{4}$ x 4 $\frac{1}{4}$ -	\$ .45	4 $\frac{1}{4}$ x 6 $\frac{1}{2}$ -	\$ .90	6 $\frac{1}{2}$ x 8 $\frac{1}{2}$ -	\$1.65
3 $\frac{1}{4}$ x 5 $\frac{1}{2}$ -	.55	5 x 7 -	1.10	8 x 10 -	2.40
4 x 5 -	.65	5 x 8 -	1.25		

## PRINTING FRAMES

Especial attention is called to the new Kodak Maskit



Printing Frame. It is furnished with a series of paper masks, and a patented, simply working device on the inside of the frame holds paper mask and negative firmly together, preventing all chance of slipping. All Eastman printing frames are strongly constructed of suitable material.

### PRICES

Kodak Maskit Printing Frame, 3 $\frac{1}{4}$ x 4 $\frac{1}{4}$ , opens two-thirds	\$ .40
Kodak Maskit Printing Frame, 3 $\frac{1}{4}$ x 5 $\frac{1}{2}$ , opens two-thirds	.45
Kodak Maskit Printing Frame, 5 x 7, opens two-thirds	.50
Eastman, 3 $\frac{1}{2}$ x 3 $\frac{1}{2}$ , opens two-thirds	.25
Eastman 3 $\frac{1}{4}$ x 4 $\frac{1}{4}$ , opens two-thirds	.25
Eastman 3 $\frac{1}{4}$ x 5 $\frac{1}{2}$ , for films, opens two thirds	.25
Ditto, for plates	.25
Eastman, 4 x 5, opens two-thirds	.25
Eastman, 5 x 7, opens two-thirds	.35



# PREMO ACCESSORIES

## KODAK CANDLE LAMP

This lamp is collapsible, well made, of special tested ruby fabric, bound in metal frames.

Kodak Candle Lamp - - - \$ .25  
Extra Candles for same, per dozen .30



## KODAK DARK ROOM LAMP

The Kodak Dark Room Lamp is oil burning and is fitted with both orange and ruby glass.

No. 2 Kodak Dark Room Lamp \$1.00

## MOULDED TUMBLER GRADUATES

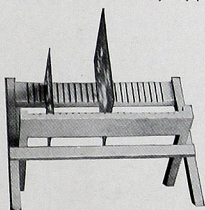
An inexpensive graduate but fully reliable in every respect.

2 ounces - - \$ .10      8 ounces - - \$ .20  
4 ounces - - .15      16 ounces - - .30



## DEVELOPING TRAYS

Bulls-Eye,  $3\frac{1}{4} \times 4\frac{1}{4}$  - - - - - \$ .12  
Bulls-Eye,  $4 \times 5$  or  $4 \times 6$  - - - - - .15  
Bulls-Eye,  $5 \times 7$  - - - - - .25  
Eastman Enameled,  $4\frac{3}{8} \times 5\frac{3}{8}$  - - - - - .25  
Eastman Enameled,  $4 \times 6$  - - - - - .25  
Eastman Enameled,  $5\frac{1}{4} \times 7\frac{3}{8}$  - - - - - .50



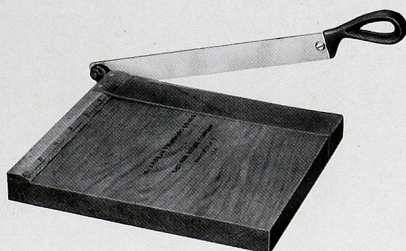
## PREMO NEGATIVE RACK

This rack accommodates negatives of all sizes. It folds flat when not in use.

No. 1, for 12 negatives - \$ .20  
No. 2, for 24 negatives - .25

## KODAK TRIMMING BOARD

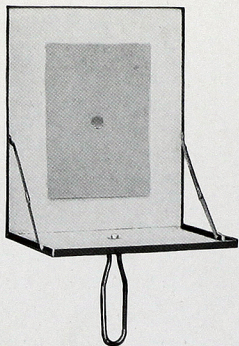
A thoroughly reliable trimming board at a moderate price, constructed of hard wood with natural finish. The blade is of the best steel and a rule is fitted to the board.



No. 1,  $5 \times 5$  in. - - - - - \$ .40  
No. 2,  $7 \times 7$  in. - - - - - .60  
Transparent Trimming Gauge for either (extra) - .20



## FLASH-LIGHT MATERIAL



The simplest and safest method of making flash-light pictures is by means of the Eastman Flash Sheets and Kodak Flash Sheet Holder. The sheets burn slowly, giving a broad, soft light, and not so startling the subject as to give a staring effect to the eyes.

The holder is a genuine innovation. A saw tooth holds the sheet in proper position and it is lighted from the back through an aperture provided in the center for the purpose. In this manner the holder is always between the operator and the flash sheet, and it may be held in the hand or supported on a tripod, a socket being provided for the latter purpose.

- \*No. 1 Flash Sheets, per package of  $\frac{1}{2}$  dozen sheets, 3 x 4 \$ .31
- \*No. 2 Flash Sheets, per package of  $\frac{1}{2}$  dozen sheets, 4 x 5 .50
- \*No. 3 Flash Sheets, per package of  $\frac{1}{2}$  dozen sheets, 5 x 7 .75
- Kodak Flash Sheet Holder - - - 1.00

\*Prices subject to change without notice.

## KODAK MAGNESIUM RIBBON HOLDER



This extremely handy little apparatus provides a most convenient method of burning magnesium ribbon for photographic purposes. It comprises at once a compact magazine for storing the ribbon, a convenient holder for burning

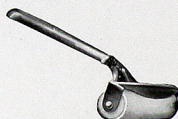
it, and a means of measuring definite lengths of the ribbon.

- Kodak Magnesium Ribbon Holder - - - - - \$ .20
- Alcohol Lamp, for use with above - - - - - .20

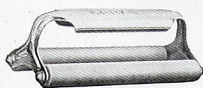
## FLEXO PRINT ROLLER

An inexpensive but very satisfactory roller for amateur use; has black enameled frame and a 4-inch rubber roller.

Price, \$ .15



## KODAK PRINT ROLLER



The best roller ever made for general amateur use; has double rubber rollers, 2 x 6 inches, and nickeled frame.

Price, \$ .50



## PREMO ACCESSORIES

### DEVELOPING AND PRINTING

Size.	Developing and Printing Per Pack.		Developing only, Per Pack.	Printing only, Each Exposure.	
	Mounted.	Unmounted.		Mounted.	Unmounted.
1 3/4 x 2 3/8, 12 exp.	\$ .95	\$ .89	\$ .40	\$ .06	\$ .05 1/2
2 1/4 x 3 1/4, 12 exp.	1.40	1.28	.50	.08	.07
2 1/2 x 4 1/4, 12 exp.	1.50	1.38	.70	.08	.07
3 1/4 x 4 1/4, 12 exp.	1.50	1.38	.70	.08	.07
3 1/4 x 5 1/2, 12 exp.	1.80	1.68	1.00	.10	.09
4 x 5, 12 exp.	1.80	1.68	1.00	.10	.09
5 x 7, 12 exp.	2.40	2.10	1.20	.12 1/2	.10

Unmounted Velox prints are furnished unless otherwise specified.

"Double Weight" prints will be billed at mounted rates.

No orders executed for less than 25 cents.

### DEVELOPING AND PRINTING OUTFITS

Eastman 3A Outfit includes every requisite for developing by the dark room method, printing and finishing twenty-four 3 1/4 x 5 1/2 or smaller pictures.

1 Kodak Candle Lamp, 25c; 1 Printing Frame, 25c; 1 Glass for Frame, 5c; 1 4-ounce Graduate, 15c; 1 Stirring Rod, 5c; 4 Developing Trays, 40c; 5 Tubes Eastman's Special Developer, 25c; 1/2 pound Kodak Acid Fixing Powder, 15c; 1 package Bromide Potassium, 10c; 2 dozen 3 1/4 x 5 1/2 Velox Paper, 30c; 2 ounces Nepera Solution, for developing Velox, 10c; Instruction Book, 10c. These articles if purchased separately would cost \$2.15. Price, complete, neatly packed, \$1.50.

A B C Outfit, similar to above, but for 4 x 5 negatives, \$1.50.

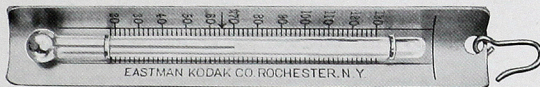
### THERMOMETER STIRRING ROD



Two articles of great use to the amateur, combined in one. The rod is 1/4-inch in diameter and 9 inches long. One end is flattened for crushing purposes. The thermometer is carefully tested and is unusually accurate.

Price, \$ .60

### EASTMAN THERMOMETER



Especially suitable for determining the temperature in tank development. Made with curved back to fit inside of tank, and has a hook from which it can be suspended.

Price, \$ .50

### EASTMAN PHOTO PASTE

A solid, first quality white paste. Will not cockle nor discolor print or mount.

4 ounce jar, \$ .10      8 ounce jar, \$ .20

5 ounce tube, \$ .25





# PREMO ACCESSORIES

## THE KODAK ALBUM

(Patent Applied For)



Made on a new principle, which does away with mounting prints by paste or otherwise. They are merely slipped into pocket strips at top and bottom, and will not come out unless removed by hand. Has handsome grain leather cover and black leaves with linen finish.

A, $2\frac{1}{4} \times 3\frac{3}{4}$ , 25 leaves, 3 on	- - - -	\$2.25
B, $2\frac{1}{2} \times 4\frac{1}{4}$ , 25 leaves, 3 on	- - - -	2.50
C, $3\frac{1}{4} \times 4\frac{1}{4}$ , 25 leaves, 3 on	- - - -	2.50
D, $3\frac{3}{4} \times 5\frac{1}{2}$ , 25 leaves, 3 on	- - - -	2.75
E, $3\frac{3}{4} \times 5\frac{1}{2}$ , 50 leaves, 3 on	- - - -	3.50
F, 4 x 5, 25 leaves, 2 on	- - - -	2.60
G, $4\frac{1}{4} \times 6\frac{1}{2}$ , 25 leaves, 2 on	- - - -	2.75
H, 5 x 7, 25 leaves, 2 on	- - - -	3.00

## THE MINERVA ALBUM

This album is bound solid, with 50 linen finish leaves, black only. Covered with black morocco grain leather. A special feature of this album is the large pocket in back cover for loose prints.

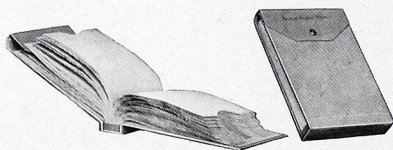
A, 5 x 8	- \$1.25	C, 10 x 12	- \$2.75
B, 7 x 11	- 1.50	D, 9 x 14	- 3.00

## THE FORUM ALBUM

Flexible, black leather embossed cloth cover.

A, 25 black leaves, or N, 25 Sepia leaves, $5\frac{1}{2} \times 7$	- -	\$ .35
B, 25 black leaves, or O, 25 Sepia leaves, $7 \times 10$	- -	.50
C, 25 black leaves, or P, 25 Sepia leaves, $10 \times 7$	- -	.50
D, 25 black leaves, or R, 25 Sepia leaves, $11 \times 14$	- -	1.25
E, 50 black leaves, $5\frac{1}{2} \times 7$	- - - -	.50
F, 50 black leaves, $7 \times 10$	- - - -	.75
G, 50 black leaves, $10 \times 7$	- - - -	.75
H, 50 black leaves, $11 \times 14$	- - - -	1.50

## EASTMAN FILM NEGATIVE ALBUMS



For 100 negatives, $2\frac{1}{2} \times 4\frac{1}{4}$ , or smaller	- \$ .75
For 100 negatives, $3\frac{3}{4} \times 4\frac{1}{4}$ , or $4 \times 5$	- 1.00
For 100 negatives, $3\frac{3}{4} \times 5\frac{1}{2}$ , or smaller	- 1.00
For 100 negatives, $5 \times 7$ or smaller	- 1.50



# PREMO ACCESSORIES

## CARD MOUNTS

### BALTIC

Buff, Brown or Grey.

Heavy stock, beveled edge, heavy borders—a beautiful rich mount.

For Prints.	Size Outside.	Per 50.	Per 100.
2¼x3¼	4⅜x5⅜	\$ .55	\$1.10
2½x4¼	4½x6¼	.65	1.25
3¼x4¼	5⅛x6⅛	.70	1.35
3¼x5½	5⅜x8	.80	1.55
4 x5	6 x7	.85	1.65
5 x7	8 x10	1.40	2.75

### MARINE

London Brown and Ash Grey.

For Prints.	Size Outside.	Per 50.	Per 100.
2¼x3¼	4⅜x5⅜	\$ .50	\$ .95
2½x4¼	4½x6¼	.50	1.00
3¼x4¼	5⅛x6⅛	.50	1.00
3¼x5½	5⅜x8	.70	1.35
4 x5	6 x7	.65	1.25
5 x7	8 x10	1.05	2.10

## INSLIP ENLARGEMENT MOUNT

Color, English Gray or Sepia-Buff.

	For Prints.	Size Outside.	Price Per Dozen.
A	3¼x5½	7¼x9¼	\$ .50
B	3⅝x5½	8⅛x9¾	.50
C	4¼x6½	8½x10¾	.50
D	5 x7	9⅜x11⅜	.50

	For Prints.	Size Outside.	Price Per Dozen.
E	5 x8½	9⅝x13⅛	\$ .58
F	6½x8½	11⅝x13⅝	.60
G	6 x10	10⅝x14⅝	.65
H	8 x10	12⅝x14⅝	.80

	For Prints.	Size Outside.	Price Per Half Dozen
J	10x12	15¼x17¼	\$ .80
K	7x12	12 x17	.60

	For Prints.	Size Outside.	Price Per Half Dozen
L	8x14	14¼x20¼	\$ .60
M	11x14	17¼x20¼	1.10

## WOODMAT

A new medium for mounting prints on the "slip in" principle, giving the effect of a rich brown wood frame.

	For Print.	Outside.	Each.
No. 1	2¼ x 3¼	4⅜ x 5⅜	- \$ .05
No. 1A	2½ x 4¼	4⅝ x 6⅜	- .06
No. 3	3¼ x 4¼	5½ x 6½	- .07
No. 3A	3¼ x 5½	6¼ x 8⅜	- .08
No. 4	4 x 5	6¾ x 7¾	- .08
No. 4A	4¼ x 6½	7 x 9¼	- .10



## SUNDRIES

Cable Release	- - - - -	\$ .25
Bulbs and Tubes, No. 2	- - - - -	.25
Bulbs and Tubes, No. 3	- - - - -	.35
Focus Cloth, Rubber	- - - - -	.50
Ground Glass:		
4 x 5	- - - - -	.15
5 x 7	- - - - -	.20
6½ x 8½	- - - - -	.25
8 x 10	- - - - -	.30
Reversible Backs:		
For View Cameras, 5x7	- - - - -	5.00
For View Cameras, 6½x8½	- - - - -	6.00
For View Cameras, 8x10	- - - - -	7.00
Premo View Finder	- - - - -	1.50
Screws for Tripod Head:		
Nos. 1, 2 and 3	- - - - -	.15
Nos. 4 and 5	- - - - -	.25
Screws for Tripod Leg:		
Nos. 1, 2 and 3	- - - - -	.10
Nos. 4 and 5	- - - - -	.15

Milled Head Screws for Cameras:		
½ inch and smaller	- - - - -	.10
Larger than ½ inch	- - - - -	.15
Shoulder Straps, Black:		
½ x 52 inch with Snaps and Buckles	- - - - -	.40
⅝ x 52 inch with Snaps and Buckles	- - - - -	.50
½ x 66 inch, with Buckle	- - - - -	.40
⅝ x 74 inch, with Buckle	- - - - -	.50
Tan Straps for View Cases with Buckle. Specify style and size of camera when ordering:		
34, 40 and 44 inches	- - - - -	.40
52, 60 and 66 inches	- - - - -	.50
Tubing, per foot	- - - - -	.06



## TESTED CHEMICALS

Eastman Chemical Outfit	\$ .30
Eastman Special Developer Powders, per package 5, in sealed glass tubes	.25
Eastman Hydrochinon Developer Powders, per dozen	.50
Ditto, per ½ dozen	.25
Ditto, per package 5 powders, in sealed glass tubes	.25
Eastman's Pyro Developer Powders, per dozen	.50
Ditto, per ½ dozen	.25
Ditto, per package 5 powders, in sealed glass tubes	.25
Tozol, per 1-ounce bottle	.40
Elon, per 1 ounce	.50
Roylon, per 1-ounce bottle	.50
Hydrochinon, per 1-ounce bottle	.26
Eastman's Permanent Crystal Pyro, per 1-ounce bottle	.25
Velox Re-developer Tubes, package of 12 tubes	.60
Hypo Sulphite of Soda, granular, per pound	.08
Alum, powdered, per pound	.13
Kodak Acid Fixing Powder, per pound package	.25
Ditto, per ½-pound package	.15
Ditto, per ¼-pound package	.10
Eastman Intensifier, glass tube, per tube	.15
Eastman Reducer, per box of 5 tubes	.25
Eastman Opaque No. 1, per tube	.15
Potassium Bromide, per ounce	.18
Acetic Acid, 28 per cent., per 1-pound bottle	.20
Citric Acid, 4-ounce bottle	.44
Eastman Tested Carbonate of Soda (desiccated), per 1-pound bottle	.20
Eastman Tested Sulphite of Soda (desiccated), per 1-pound bottle	.30

These Prices Subject to Change Without Notice.

## VELOX PAPER AND SUNDRIES

Size.	Single Weight			Double Weight.		
	Doz.	½ Gross.	Gross.	Doz.	½ Gross.	Gross.
2¼ x 3¼	-.10	\$.60	\$1.00	\$.15	\$.75	\$1.25
2½ x 4¼	-.12	.70	1.25	.18	.90	1.55
3¼ x 4¼	-.15	.80	1.50	.20	1.00	1.90
3¼ x 5½	-.15	.80	1.50	.20	1.00	1.90
4 x 5	-.20	1.10	2.00	.25	1.40	2.50
5 x 7	-.35	2.00	3.50	.45	2.50	4.40
Velox Post Cards	-	-	-	.20	1.10	2.00
N. A. (Non-abrasion) Velox Liquid Developer, 4-ounce bottle (makes 20 ozs. for Special, 12 ozs. for Regular)	-	-	-	-	-	\$.25
Ditto, 16-ounce bottle	-	-	-	-	-	.75
Nepera Solution, per 4-ounce bottle	-	-	-	-	-	.20
Ditto, per 16-ounce bottle	-	-	-	-	-	.60
Nepera Auxiliary Powders (for converting Nepera solution to a film or plate developer), per package 1 dozen	-	-	-	-	-	.15
Velox Re-developer for Sepia Tones, per 4-ounce bottle	-	-	-	-	-	.50
Ditto, 2 ounces (sufficient for 150 4 x 5 prints)	-	-	-	-	-	.30
Nepera M. Q. N. A. Tubes, box of 5 tubes	-	-	-	-	-	.75
Kodak N. A. M. Q. Developer, per package 3 tubes	-	-	-	-	-	.25

## Terms

The prices in this catalogue are strictly net, except to regular dealers who carry our goods in stock. For the convenience of our customers we recommend that they make their purchases from a dealer in photographic goods, as by so doing they can save both time and express charges.

ROCHESTER OPTICAL DIVISION,

EASTMAN KODAK CO.,

ROCHESTER, N. Y.





O. H. PECK COMPANY  
EASTMAN KODAK COMPANY  
112-114-116 FIFTH STREET SOUTH  
MINNEAPOLIS, MINN.