

GRAFLEX



GRAFLEX

and

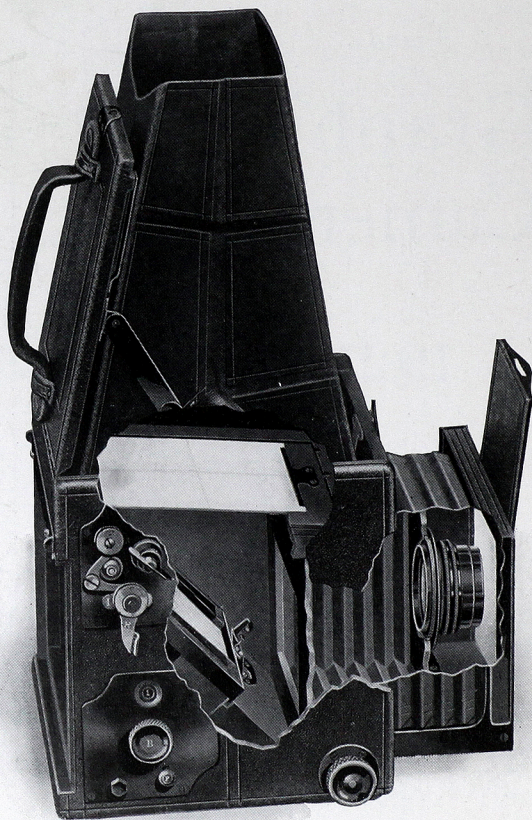
Graphic Cameras

1921

Eastman Kodak Company

Folmer & Schwing Department

Rochester, N. Y.



THE GRAFLEX
REFLECTING PRINCIPLE

THE GRAFLEX

THE Graflex is well called "The camera that does the difficult things in photography—and does them well." The Graflex however does more than that—it makes pictures of ordinary subjects with more certainty than any other type of camera.

The Graflex increases the possibilities of pictorial results. The Graflex user soon learns to appreciate this and to attempt any subject, regardless of time, place or light condition. This certainty of results with the Graflex greatly increases the pleasure of picture making.

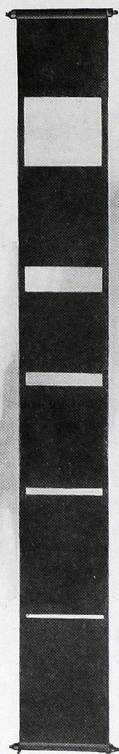
Story-telling pictures make a strong appeal and hold the interest, whether faithful records of athletic activities, pleasing poses of children at play, home portraits, indoor studies or pictures made in the soft light of cloudy or rainy days—all easily made with the Graflex.

There is no measuring or estimating the distance between the subject and camera to obtain proper focus of the lens. Simply look into the hood and see the reflection of the subject—full picture size and right side up. A slight turn of a button instantly adjusts the focus—degree of sharpness—of this reflected image as the camera is pointed to properly include the desired detail. All guess work is eliminated, and the picture is shown just as it will appear in the finished print. The image before the lens is reflected upon a ground glass at the bottom of the hood by a mirror which swings out of the way, when the shutter is released for an exposure.

Full illumination and uniform exposure of the film or plate are unique features of the Graflex Focal Plane

Shutter, quite as important as the reflecting principle. The Graflex should not be associated with "speed pic-

tures" only, for the optical and mechanical principles that make possible fully timed negatives in $\frac{1}{1000}$ of a second will also make perfect negatives under adverse light conditions. The Graflex Focal Plane Shutter has a decided advantage over shutters of the usual type because the lens works at full efficiency throughout the period of exposure—all the light passing through the lens reaches the plate. With shutters of the between-the-lens type the lens is working at its full opening only during a fraction of the exposure, the remaining portion of the exposure period being taken up by the opening and closing of the shutter. This is illustrated on the following page.

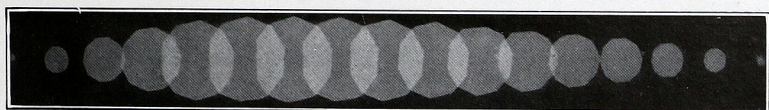
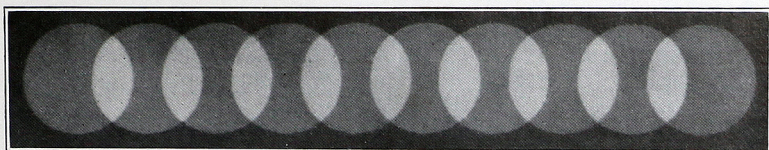


Graflex Shutter
Curtain

The Graflex Focal Plane Shutter is a long curtain with five fixed openings varying from the full size of the plate to one-eighth of an inch in width. These openings being of a fixed size and metal bound, insure at all times an absolutely uniform rectangular opening and uniform exposure. The curtain moves as closely as possible to the surface

of the film or plate.

The length of exposure is regulated by the size of the curtain aperture used and the tension which regulates the speed at which the opening moves across the film or plate.



These illustrations are reproduced from actual photographs made at the Kodak Research Laboratory. The upper figure shows that with a Graflex Focal Plane Shutter there is no diminishing of the volume of light due to the opening and the closing of the shutter, the lens working at its full efficiency during the entire period of exposure. The lower figure shows how a between-the-lens shutter, when making short exposures, uses up most of the exposure period in opening and closing, allowing the lens to work at its full efficiency only during a small fraction of the exposure.

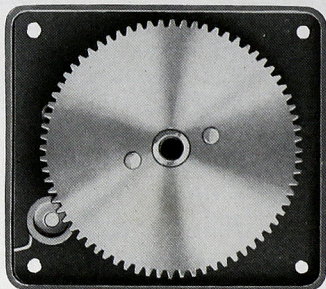
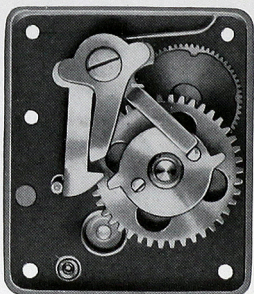
This is why the Graflex Focal Plane Shutter allows more light to reach the plate or film during the interval of exposure than any other shutter.

Attached to the camera, a shutter speed plate gives the approximate speeds in fractional parts of a second obtained with the various combinations of curtain openings and degrees of tension. With every Graflex is supplied an exposure table for views and speed work, showing at a glance the approximately correct shutter speed and lens aperture to use for every kind of subject.

Picture making with the Graflex is indeed simple. A suitable exposure period is found in the tables and the shutter set. Focusing is done while watching the full picture size image on the screen and when the desired composition is shown, the exposure is made by a pressure of the mirror release lever. The mirror swings out of the way, releasing the shutter curtain. The mirror comes to rest against an air cushion formed in the top

of the camera, effectively preventing all vibration. Another exclusive Graflex feature is the safety device which prevents re-winding of the shutter curtain until the mirror is returned to focusing position, thus preventing premature exposure of the film or plate.

The Focal Plane Shutter in Graflex cameras operates at twenty-four instantaneous speeds from $\frac{1}{10}$ to $\frac{1}{1000}$ of a second. Adjustments can also be made for slow "instantaneous" speeds of about $\frac{1}{8}$ of a second and "time" exposures of any duration. The only exceptions are the Press Graflex, where a speed of $\frac{1}{1500}$ of a second may be obtained, and the Home Portrait Graflex which has a maximum speed of $\frac{1}{500}$ of a second.



Auto Graflex Shutter Control Mechanism

Every Graflex is made and adjusted with the utmost precision, subjected to rigid inspection and thoroughly tested before leaving the factory, insuring to the user the greatest possible camera satisfaction.

The Graflex is constructed of mahogany covered with the finest grade Persian Morocco leather, harmonizing perfectly with the rich appearance given by the oxidized metal work and ebonized finish of all visible wood parts. Tripod plates are provided for the use of a tripod when making prolonged time exposures.

THE 1A GRAFLEX

Autographic

THE 1A Graflex is a very compact camera with Kodak roll film convenience. These advantages are offered in combination with the Graflex reflecting principle and Graflex Focal Plane Shutter efficiency in a camera that makes pictures $2\frac{1}{2} \times 4\frac{1}{4}$ —a proportion that is helpful to pleasing composition.

The Autographic feature, which allows a permanent record to be made upon the negative immediately after exposure, eliminates



uncertainty and provides a means of positive identification for future reference.

The 1A Graflex with the focusing hood folded neatly into the top and the lens and bellows withdrawn into the body of the camera, gives a very compact instrument that is handily carried and makes it a strong favorite with the tourist.

The camera is easily opened and brought into action and, being loaded with Kodak Roll Film, is instantly ready for six or twelve exposures. The shutter speed table attached to the camera gives the approximate shutter speeds in fractional parts of a second from $\frac{1}{10}$ to $\frac{1}{1000}$ of a second for all classes of subjects.

A tripod socket is fitted into the base of the camera for time exposures.

Details

Outside dimensions, closed, $9\frac{1}{2} \times 3 \times 5\frac{1}{4}$; focal capacity, $6\frac{1}{2}$ in.; weight, $3\frac{3}{4}$ lbs.; size of lens board, $2\frac{1}{4} \times 2\frac{3}{8}$ in.; minimum focus of lenses accommodated, $4\frac{3}{4}$ in. For Film only. Plate adapters are not supplied. Tripod socket in base of camera.

The Price

	$2\frac{1}{2} \times 4\frac{1}{4}$
1A Graflex without lens	\$104.00
With Kodak Anastigmat Lens <i>f</i> .4.5, No. 31	141.33
With B. & L. Tessar Lens, Series Ic, <i>f</i> .4.5, No. 14	155.50
Leather Case for 1A Graflex	8.25
Extra lens boards, each75
Autographic Film Cartridge, 12 exposures (No. A 116)60
Autographic Film Cartridge, 6 exposures (No. A 116)30

The prices of camera and film include the Excise War Tax.

THE 3A GRAFLEX

Autographic

THIS camera combines the many advantages of the Graflex reflecting principle with those of roll film in the very popular $3\frac{1}{4} \times 5\frac{1}{2}$ size.

The Autographic feature fitted to the 3A Graflex, allows the date or any other necessary record for future reference to be made directly upon the film at the time, obviating uncertainty and disappointment when identification of the negative is desired.

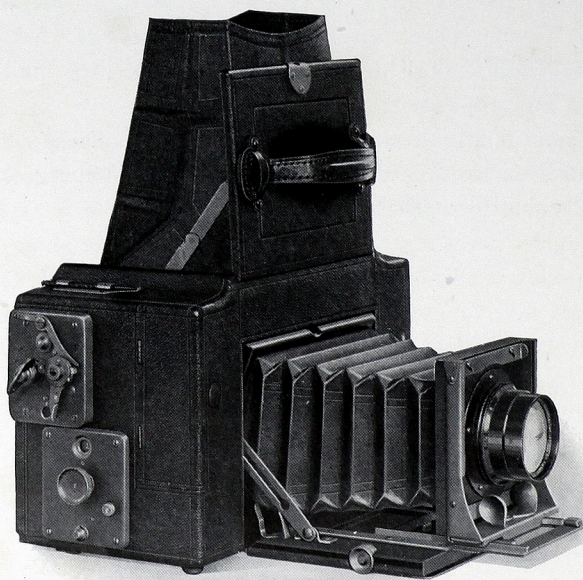
With the unusual bellows extension, focal length and speed of the lenses recommended and the variety of shutter speeds available, the 3A Graflex is equipped for a great variety of work, including home portraits, close-up nature studies, landscapes and pictures of action and animation.

The construction of the camera provides storage spaces for four extra rolls of film, making a total capacity of fifty exposures—easily and conveniently carried.

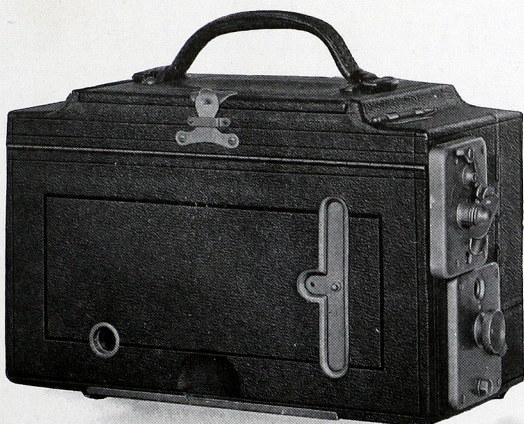
The lens carriage is very rigid and large enough to accommodate any of the high speed anastigmat lenses having sufficient focal length—from $6\frac{1}{2}$ to $7\frac{1}{2}$ in. The lenses listed have been carefully selected, but to get the full value of the 3A Graflex, an $f.4.5$ lens is strongly urged.

The Graflex Focal Plane Shutter, built into the camera, provides for twenty-four instantaneous speeds from $\frac{1}{10}$ to $\frac{1}{1000}$ of a second and are shown on the shutter speed plate on the hood. A slow instantaneous speed of $\frac{1}{8}$ of a second and "time" exposures of any length are provided for.

When the cover of the camera is raised the focusing hood opens automatically and is large enough to permit easy and accurate focusing. This hood can easily be removed to give access to the ground glass screen when, after prolonged use, cleaning becomes necessary.



THE 3A GRAFLEX
Autographic



3A Graflex, Closed, Showing Autographic Feature

The "Infinity Focus" is set by a metal stop adjusted to the track and when the front is drawn out to this point, distant objects may be photographed without focusing. This is useful for general landscape work where none of the subjects are close to the camera.

A tripod is rarely necessary with the Graflex, but for the occasional use for prolonged time exposures, two tripod sockets are provided, one in the base for horizontal pictures and one in the side for vertical pictures.

Details

Dimensions, 10 x 5 x 6 $\frac{3}{8}$; focal capacity, 10 in.; weight, 7 lbs.; size of lens board, 3 $\frac{1}{4}$ x 3 $\frac{1}{4}$ in.; minimum focus of lenses accommodated, 6 $\frac{1}{2}$ in. For Film only. Plate adapters are not supplied.

The Price

	3 $\frac{1}{4}$ x 5 $\frac{1}{2}$
3A Graflex without lens	\$120.00
With Kodak Anastigmat Lens, <i>f</i> .4.5, No. 33	173.33
With B. & L. Tessar Lens, Series Ic, <i>f</i> .4.5, No. 15a	193.00
Leather Case for 3A Graflex	10.50
Extra lens boards, each90
Autographic Film Cartridge, 10 exposures (No. A 122)90
Autographic Film Cartridge, 6 exposures (No. A 122)55

The prices of camera and film include the Excise War Tax.

REFER TO FITTING LENSES, PAGE 55.

THE AUTO GRAFLEX

THE Auto Graflex is very simple and rapid in operation. It is well adapted to all round work, using either plates or film.

Made in three popular sizes, any one of which is suitable for an almost unlimited variety of work unless long focus lenses and considerable bellows extension is called for.

Release of a catch brings the viewing hood into position and a slight turn of the focusing button raises the lens shield and advances the front, projecting the subject on to the ground glass almost instantaneously—a great advantage when a good subject for a picture is unexpectedly encountered.

While the back of the Auto Graflex does not revolve, vertical pictures can readily be made by focusing in normal position and then turning the camera on its side and making the exposure.

Although any of the well-known Anastigmat lenses can be fitted



to the Auto Graflex, the most satisfactory results will be obtained with the lenses listed with each model. Wide angle and short focus lenses cannot be fitted to Graflex cameras, as the lens must be set far enough from the focal plane to allow the mirror to swing out of the path of the light.

The 5 x 7 Auto Graflex varies slightly in construction from the 3 1/4 x 4 1/4 and 4 x 5 sizes. The front, as well as the lens cover, is hinged, giving easy access to the lens, and the top edge of the camera body is recessed similar to the Revolving Back Auto Graflex.

The Auto Graflex is fitted to take the regular Graflex Plate Holder, also the Graflex Magazine Plate Holder, the Graflex Film Pack Adapter and the Graflex Roll Holder.

Details

	3 1/4 x 4 1/4	4 x 5	5 x 7
Dimensions when closed	5 3/4 x 5 3/8 x 6 1/4	6 3/4 x 6 1/4 x 7 1/4	9 1/4 x 8 1/4 x 8 3/4
Focal capacity	7 in.	8 1/2 in.	12 in.
Weight	3 lbs. 10 ozs.	5 lbs.	8 lbs.
Size of lens board	2 7/8 x 2 7/8 in.	3 1/4 x 3 1/4 in.	4 x 4 in.
Minimum focus of lenses accommodated	5 in.	6 in.	7 1/2 in.

The Price

	3 1/4 x 4 1/4	4 x 5	5 x 7
Auto Graflex without lens, including one double holder	\$ 80.00	\$ 92.00	\$116.00
With Kodak Anastigmat Lens, f.4.5 No. 31	117.33	No. 32 135.20	No. 34 182.13
With B. & L. Tessar Ser. Ic, f.4.5 No. 14	131.50	No. 15 152.00	No. 16 206.00
Graflex Roll Holder	12.00	13.25	14.50
Graflex Magazine Plate Holder	15.50	16.50	18.75
Graflex Film Pack Adapter	6.00	6.75	8.75
Leather case for camera and roll holder	9.50	11.00	16.00
Leather case for camera and magazine plate holder	10.50	12.25	17.00
Leather case to hold six plate holders	6.00	6.75	7.75
Extra Graflex plate holders, each	3.00	3.00	4.15
Extra lens boards, each	.90	.90	1.15
Ground glass panel, to interchange with plate holders	3.50	4.25	5.75
Premo Film Packs	.90	1.10	1.90
Eastman Graflex Roll Film, 6 exp. No. 51	.45	No. 53 .55	No. 54 .95

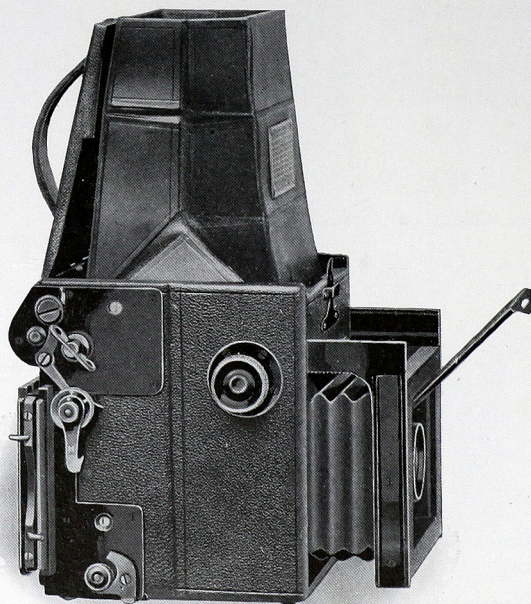
The prices of camera and film include the Excise War Tax.

REFER TO FITTING LENSES, PAGE 55.

AUTO GRAFLEX JUNIOR

THE Auto Graflex Junior is a small and very compact camera with the unique features of the larger models of Auto Graflex. It can be depended upon when the subjects are unusual as well as for average views.

The high speed Anastigmat lenses, of short focal length, listed with the camera, combined with the great range in shutter speed, give a wide latitude to photographic work and a great depth of definition with lens stops of large aperture. The $2\frac{1}{4} \times 3\frac{1}{4}$ negatives show remarkable definition and enlargements several times the original size may be made from choice negatives.



The Auto Graflex Junior has, like the larger models, twenty-four varying shutter speeds and adjustment for time exposures.

Picture making with this camera is almost automatic. Simply raising the top brings the hood into focusing position. A turn of the focusing button advances and uncovers the lens, projecting the image onto the ground glass, right side up and full picture size.

The Auto Graflex Junior has a cupped metal front threaded to take the Kodak Anastigmat *f*.4.5 lens and No. 13 B. & L. Tessar, Series Ic lens. Roll Film, Premo Film Packs or Plates may be interchangeably used in the various Graflex attachments made for this camera. There is one tripod socket in the bottom of the camera.

Details

Dimensions closed, 5 x 4 $\frac{3}{8}$ x 5; focal capacity, 5 $\frac{1}{2}$ in.; weight, 39 ozs.; minimum focus of lens accommodated, 4 in.

The Price

	2 $\frac{1}{4}$ x 3 $\frac{1}{4}$
Auto Graflex Junior without lens, including one double plate holder	\$64.00
With Kodak Anastigmat Lens, <i>f</i> .4.5, No. 30	97.08
With B. & L. Tessar, Series Ic, <i>f</i> .4.5, No. 13	109.00
Graflex Roll Holder	11.50
Graflex Magazine Plate Holder	13.25
Graflex Film Pack Adapter	5.50
Ground glass panel, to interchange with plate holders	3.25
Leather case for camera and plate holder or roll holder	7.75
Leather case for six plate holders	5.50
Leather case for camera and magazine plate holder	9.50
Extra Graflex plate holders, each	2.00
Premo Film Packs50
Eastman Graflex Roll Film, No. 50, 6 exposures25

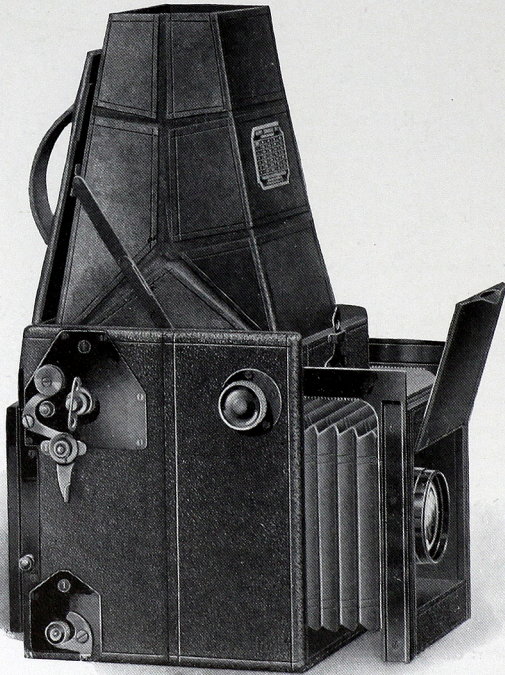
85.00
89.00

The prices of camera and film include the Excise War Tax.

Revolving Back GRAFLEX JUNIOR

THIS has all the good features of the Auto Graflex Junior with the additional advantage of the revolving back, which allows the making of vertical pictures without turning the camera on its side. The revolving back may be changed to any position without danger of fogging the film or plate when the slide is withdrawn.

The Revolving Back Graflex Junior makes the same size picture as the Auto Graflex Junior and, while similar in construction, has



a slightly longer body to accommodate the additional length of mirror required for vertical focusing. A lens of slightly greater focal length is necessary for the same reason.

The Graflex Focal Plane Shutter with an exposure range from "time" to $\frac{1}{1000}$ of a second is provided. A safety device prevents the winding of the shutter curtain until the mirror is locked in focusing position, preventing the fogging of film or plate.

The Revolving Back Graflex Junior can be fitted with the Kodak Anastigmat *f*.4.5 Lens and the B. & L. Tessar Lens, Series Ic, No. 15. It is fitted with one tripod socket in the bottom of the camera.

Details

Dimensions when closed	6 x 4½ x 6¼
Focal capacity	7¼ in.
Weight	3¼ lbs.
Minimum focus of lenses accommodated	5¼ in.

The Price

Revolving Back Graflex Junior, without lens, including one double plate holder	2¼ x 3¼ \$ 88.00
With Kodak Anastigmat Lens, <i>f</i> .4.5, No. 32	131.20
With B. & L. Tessar Lens, Series Ic, <i>f</i> .4.5, No. 15	148.00
Graflex Roll Holder	11.50
Graflex Magazine Plate Holder	13.25
Graflex Film Pack Adapter	5.50
Ground glass panel, to interchange with plate holders	3.25
Leather case for camera and plate holder or roll holder	8.25
Leather case for six plate holders	5.50
Leather case for camera and magazine plate holder	10.00
Extra Graflex plate holders, each	2.00
Premo Film Packs50
Eastman Graflex Roll Film, No. 50, 6 exposures25

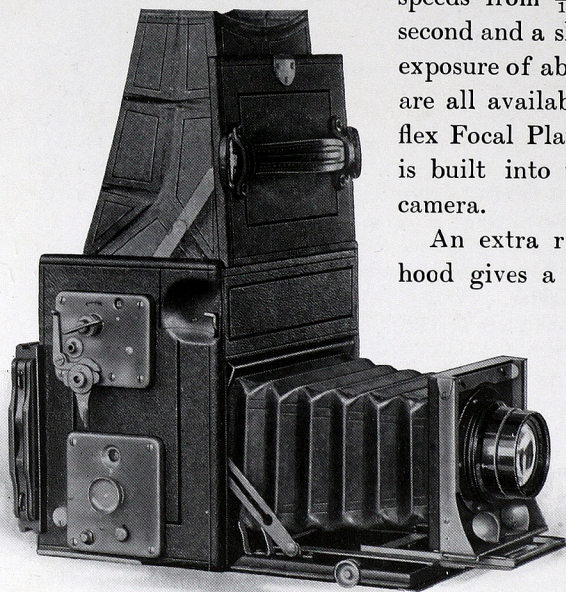
The prices of camera and film include the Excise War Tax.

THE COMPACT GRAFLEX

AS its name implies, the Compact Graflex combines all the advantages of Graflex construction; the smallest possible size for a reflecting camera making $3\frac{1}{4} \times 5\frac{1}{2}$ or 5×7 pictures and the interchangeable use of Eastman Graflex Roll Film, Premo Film Packs and Plates.

The Anastigmat lenses for both sizes of the Compact Graflex were chosen for their speed as well as focal length. For all-round photography including high speed work, indoor portraits and pictures made on dark or rainy days, a lens working at $f.4.5$ is strongly recommended. The lens support is made of metal and has a strong spring clamp which grips the track firmly at any desired point. Time exposures of any length; instantaneous speeds from $\frac{1}{10}$ to $\frac{1}{1000}$ of a second and a slow instantaneous exposure of about $\frac{1}{5}$ of a second are all available with the Graflex Focal Plane Shutter which is built into the body of the camera.

An extra roomy focusing hood gives a full view of the



focusing screen when making exposures with the camera in position for making either horizontal or vertical negatives. The hood is detachable, allowing the focusing screen to be cleaned when necessary. The Compact Graflex takes the regular Graflex Plate Holder, Graflex Film Pack Adapter, Graflex Magazine Plate Holder, Graflex Cut Film Holder and Graflex Roll Film Holder. Two tripod sockets are provided, one for horizontal and another for vertical pictures.

Details

	$3\frac{1}{4} \times 5\frac{1}{2}$	5×7
Dimensions when closed	$7 \times 4\frac{7}{8} \times 7$	$9\frac{1}{2} \times 7 \times 9\frac{1}{2}$
Focal capacity	10 in.	$12\frac{1}{2}$ in.
Weight	$5\frac{1}{2}$ lbs.	$8\frac{1}{2}$ lbs.
Size of lens board	$3\frac{1}{4} \times 3\frac{1}{4}$ in.	4×4 in.
Minimum focus of lenses accommodated	$6\frac{1}{2}$ in.	$8\frac{1}{2}$ in.

Wide Angle Lenses cannot be used with Graflex Cameras.

The Price

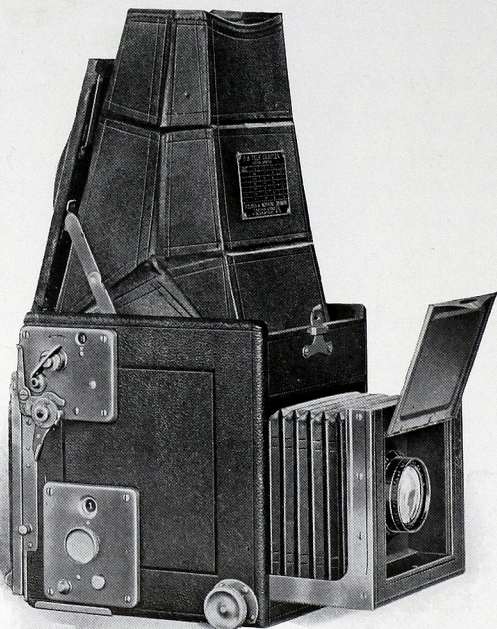
	$3\frac{1}{4} \times 5\frac{1}{2}$	5×7
Compact Graflex without lens, including one double plate holder . . .	\$120.00	\$144.00
With Kodak Anastigmat Lens, <i>f</i> .4.5 No. 33	173.33	No. 34 210.13
With B. & L. Tessar, Series Ic, <i>f</i> .4.5 No. 15a	193.00	No. 16 234.00
Graflex Roll Holder	13.25	14.50
Graflex Magazine Plate Holder . .	17.00	18.75
Graflex Film Pack Adapter, leather covered	6.75	8.75
Ground Glass Panels, to interchange with plate holders	4.25	5.75
Leather Carrying Case for camera and plate holder or roll holder . .	10.50	15.00
Leather Case for camera and magazine	11.50	16.00
Graflex Cut Film Holders	3.00	4.40
Extra Case for six plate holders . .	6.75	7.75
Extra Graflex Plate Holders	3.00	4.15
Extra Lens Boards, each90	1.15
Premo Film Packs	1.10	1.90
Eastman Graflex Roll Film, 6 exposures	No. 52 .55	No. 54 .95

The prices of camera and film include the Excise War Tax.

REFER TO FITTING LENSES, PAGE 55.

Revolving Back TELESCOPIC GRAFLEX

THE distinctive features of the R. B. Telescopic Graflex are the revolving back and greater focal length capacity than is available with the Auto Graflex of the same size. The Graflex Focal Plane Shutter and reflecting mirror combined with the high speed Anastigmat lens makes for ease and certainty in successful picture making with this camera. It is an exceptionally handy and practical camera for the beginner as well as for the more advanced worker.



The camera is quickly brought into use by pressure on a catch near the handle, causing the camera top to open, releasing the large roomy focusing hood while the lens cover automatically raises as the front is racked forward. The revolving back is quickly and smoothly changed from horizontal to vertical position.

Details

	$3\frac{1}{4} \times 4\frac{1}{4}$	4×5
Dimensions when closed . . .	$6\frac{3}{4} \times 5\frac{1}{2} \times 6\frac{7}{8}$	$8\frac{3}{8} \times 6\frac{3}{8} \times 7\frac{7}{8}$
Focal capacity	8 $\frac{1}{2}$ in.	12 in.
Weight	4 $\frac{1}{2}$ lbs.	6 $\frac{3}{4}$ lbs.
Size of lens board	$3\frac{1}{4} \times 3\frac{1}{4}$ in.	$3\frac{3}{4} \times 3\frac{3}{4}$ in.
Minimum focus of lenses accom- modated	5 $\frac{3}{4}$ in.	7 $\frac{1}{8}$ in.

The Price

	$3\frac{1}{4} \times 4\frac{1}{4}$	4×5
Telescopic R. B. Graflex without lens, including one double plate holder and focusing panel	\$120.00	\$136.00
With Kodak Anastigmat Lens, <i>f</i> .4.5 . . No. 32	163.20	No. 33 189.33
With B. & L. Tessar, Series Ic, <i>f</i> .4.5 . . No. 15	180.00	No. 16 226.00
Graflex Roll Holder	12.00	13.25
Graflex Magazine Plate Holder	15.50	16.50
Graflex Film Pack Adapter	6.00	6.75
Leather case for camera and roll holder .	10.75	13.25
Leather case for camera and magazine .	11.50	14.25
Leather case for six plate holders . . .	6.00	6.75
Extra Graflex plate holders, each . . .	3.00	3.00
Graflex Cut Film Holder	3.00	3.00
Extra lens boards, each90	1.10
Premo Film Packs90	1.10
Eastman Graflex Roll Film, 6 exposures .	No. 51 .45	No. 53 .55

The prices of camera and film include the Excise War Tax.

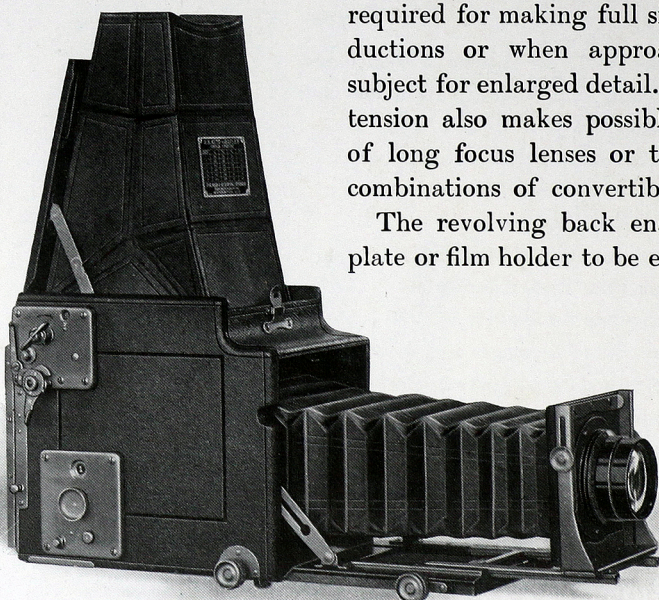
Revolving Back

AUTO GRAFLEX

THE Revolving Back Auto Graflex has an unusual bellows capacity which makes it one of the most adaptable of the Graflex cameras. While it may be used at normal focus for average views, the extra length bellows allows the lens to be moved forward far enough to give close-up detail or even full size reproductions of small objects. Where subjects cannot be closely approached, a large image is made possible by the use of a long focus lens.

The camera bed has a telescopic rack which is exceptionally rigid and may be extended beyond the edge of the platform, permitting the great bellows extension required for making full size reproductions or when approaching a subject for enlarged detail. This extension also makes possible the use of long focus lenses or the single combinations of convertible lenses.

The revolving back enables the plate or film holder to be easily and



quickly turned without removal, for making either horizontal or vertical pictures. The ground glass focusing panel may be attached in place of the plate or film holder when it is desired to focus the lens without the aid of the reflecting mirror.

The hood is of ample size to permit accurate focusing for either horizontal or vertical pictures and is detachable for the purpose of cleaning the focusing screen when necessary.

The Revolving Back Auto Graflex takes the Graflex Plate, Cut Film Holder, Graflex Magazine Plate Holder and Graflex Film Pack Adapter. Roll Film quality and convenience are provided with the Graflex Roll Holder and Eastman Graflex Film.

Details

	$3\frac{1}{4} \times 4\frac{1}{4}$	4×5
Dimensions when closed	$8\frac{1}{2} \times 5\frac{1}{2} \times 7$	$10 \times 6\frac{1}{4} \times 8$
Focal capacity	$15\frac{1}{2}$ in.	$18\frac{1}{2}$ in.
Weight	$5\frac{3}{4}$ lbs.	$7\frac{1}{2}$ lbs.
Size of lens board	$3\frac{1}{4} \times 3\frac{1}{4}$ in.	$3\frac{3}{4} \times 3\frac{3}{4}$ in.
Minimum focus of lenses accommodated	$7\frac{1}{8}$ in.	$8\frac{3}{8}$ in.

The Price

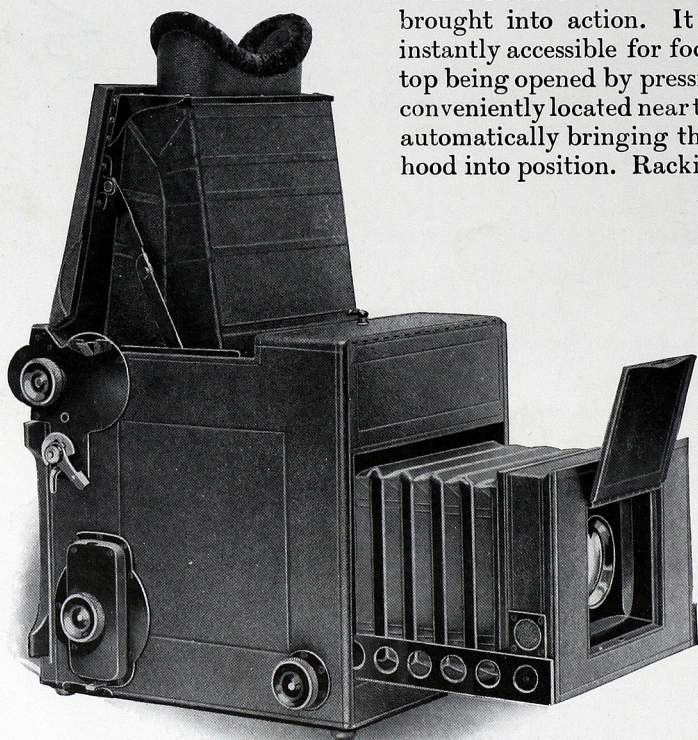
	$3\frac{1}{4} \times 4\frac{1}{4}$	4×5
Revolving Back Auto Graflex, without lens, including one double plate holder and focusing panel	\$136.00	\$152.00
With Kodak Anastigmat Lens, <i>f</i> .4.5 . . No. 33	189.33	No. 34 218.13
With B. & L. Protar Lens, Series VIIa . . No. 10	235.00	No. 13 283.00
With B. & L. Tessar Lens, Series Ic, <i>f</i> .4.5 No. 15a	209.00	No. 17 297.00
Graflex Roll Holder	12.00	13.25
Graflex Magazine Plate Holder	15.50	16.50
Graflex Film Pack Adapter	6.00	6.75
Leather case for camera and roll holder	12.25	15.00
Leather case for camera and magazine	13.25	16.00
Leather case for six plate holders	6.00	6.75
Extra Graflex plate holders, each	3.00	3.00
Extra lens boards, each90	1.10
Premo Film Packs90	1.10
Eastman Graflex Roll Film, 6 exposures . . No. 51	.45	No. 53 .55

The prices of camera and film include the Excise War Tax.

THE PRESS GRAFLEX

THE Press Graflex is made to meet the exacting demands of press and commercial photography. It is strongly built to withstand excessively hard use. A feature of this camera, apart from the reinforced construction, is the increased range of instantaneous shutter speeds—from $\frac{1}{10}$ to $\frac{1}{1500}$ of a second—giving not only a choice of exposures for average work but also for extremely rapid action. Adjustments can also be made for a slow instantaneous speed of about $\frac{1}{10}$ of a second, as well as time exposures of any length.

The Press Graflex is very quickly brought into action. It is always instantly accessible for focusing, the top being opened by pressing a lever conveniently located near the handle, automatically bringing the focusing hood into position. Racking out the



front uncovers the lens, allowing an exposure to be made with the least possible delay, a feature of great value to the press photographer when little or no time is allowed for making an exposure.

While the focal capacity is fourteen inches, lenses having a focal length of only eight inches can be fitted, giving a combination that makes for great latitude in focusing both near and distant objects.

The shutter aperture and tension index numbers are both plainly visible while the camera is in normal focusing position, an aid when changing shutter speeds.

The large and spacious focusing hood is fitted with an eye shield which effectually excludes outside light. A detachable, spring actuated ground glass panel holds the plate holder or Graflex Film Pack Adapter in position. This panel is detached when using the Magazine Plate Holder or Graflex Roll Holder. When working with the camera on a tripod in an elevated position it can be focused from the rear by means of the ground glass panel. The tripod sockets are provided for long exposures in either horizontal or vertical position.

The Press Graflex is made only in 5 x 7 size.

Details

Dimensions, 11 x 8 $\frac{1}{4}$ x 9 $\frac{3}{4}$; focal capacity, 14 in.; weight, 11 $\frac{1}{2}$ lbs.; size of lens board, 4 x 4 in.; minimum focus of lenses accommodated, 8 in.

The Price

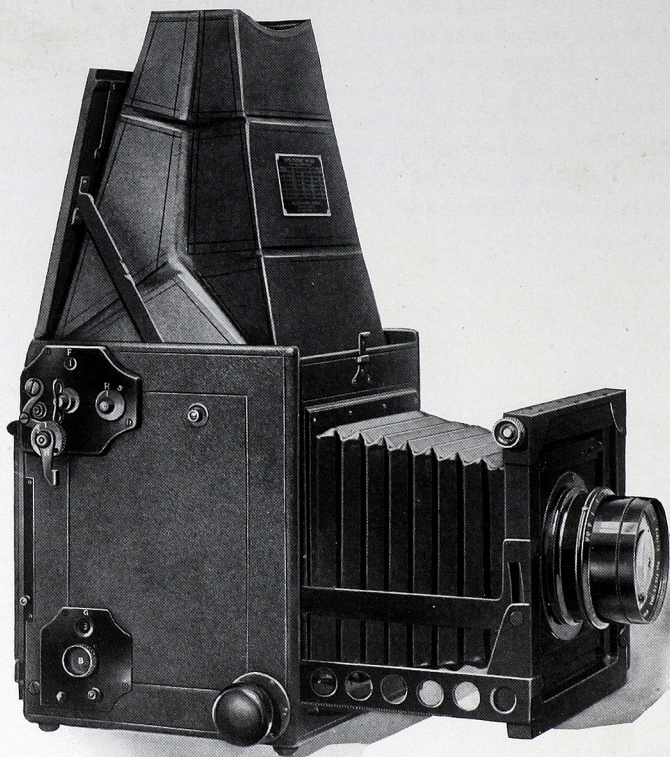
	5 x 7
Press Graflex without lens, including one double plate holder	\$192.00
With Kodak Anastigmat lens, <i>f</i> .4.5, No. 34	258.13
With B. & L. Tessar Lens, Series Ic, <i>f</i> .4.5, No. 16	282.00
Press Graflex Roll Holder	14.50
Press Graflex Magazine Plate Holder	18.75
Graflex Film Pack Adapter, leather covered	8.75
Leather case for camera and roll holder, with lock and key	19.75
Leather case for camera and magazine holder, with lock and key	21.00
Leather case for six plate or cut film holders	7.75
Extra Graflex plate holders, each	4.15
Graflex Cut Film Holders	4.40
Extra lens boards, each	1.15
Premo Film Packs	1.90
Eastman Graflex Roll Film, No. 54, 6 exposures95

213.
244.50

The prices of camera and film include the Excise War Tax.

THE HOME PORTRAIT GRAFLEX

THE Home Portrait Graflex is especially efficient for securing full time short exposures in the home where there are few facilities for controlling the light. It is most adaptable for pictures on the lawn, in the garden, on verandas and in the shade, since it is fast enough to secure sharp pictures of a moving subject. While primarily intended for portrait work, this camera is equally suitable for other branches of photography where excessive shutter speed is not required.

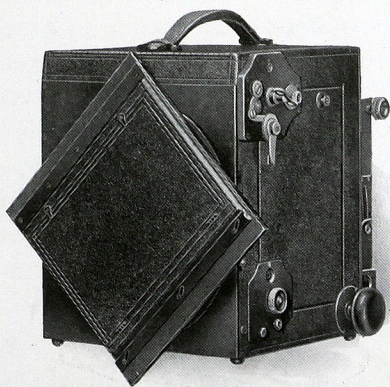


Fitted with a special Focal Plane Shutter, the Home Portrait Graflex will give automatic exposures as long as one second or instantaneous exposures up to $\frac{1}{800}$ of a second. By a special adjustment, greater illumination may be obtained with automatic exposures by adding one or more of the curtain apertures to the full opening. This adjustment consists of an escapement permitting the curtain to travel its full length, utilizing all apertures. The shutter can also be adjusted for time exposures of any length.

A special feature of this camera making for efficiency in portrait work is the swinging front. By a slight turn of a quick acting screw, the lens is raised or lowered and tilted to correct the false perspective frequently obtained in sitting figures or in groups where some of the figures are in front of others. By this device it is possible to obtain the desired amount of diffusion in the draperies. The image remains brilliantly visible while the adjustments are being made, thus eliminating all uncertainty as to the effect secured.

The tilting adjustment can also be used in a manner similar to a rising and falling front, as when the lens is tilted the front describes an arc, moving up and down according to the way the tilting screw is turned. When the lens is centered, the front board and the focal plane are parallel.

The Revolving Back permits either vertical or horizontal negatives without turning the camera. It is unnecessary to remove the back from the camera when changing from one position to another.



Home Portrait Graflex, Showing
Revolving Back

A ground glass focusing panel is supplied with the Home Portrait Graflex. This panel has a spring actuated cover with side shields and is used for focusing when the camera is in an elevated position or on a tripod. A tripod socket is provided for prolonged exposures. There are also two buttons on the camera to enable the operator to use a shoulder strap to support the camera when desirable.

The Home Portrait Graflex takes the regular 5 x 7 Graflex Plate Holder, Graflex Magazine Plate Holder, Graflex Cut Film Holder and Film Pack Adapter. Eastman Graflex Film may be used with the Graflex Roll Holder.

Details

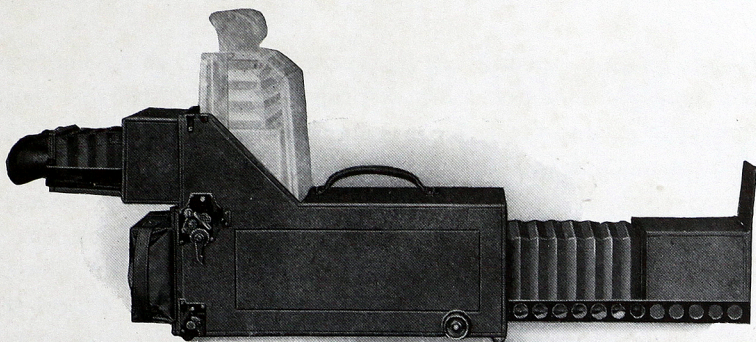
Dimensions, $9\frac{3}{4} \times 9 \times 10\frac{1}{2}$; focal capacity, 15 in.; weight, $11\frac{1}{2}$ lbs.; size of lens board, 5×5 in.; minimum focus of lenses accommodated, $9\frac{7}{8}$ in.

The Price

Home Portrait Graflex without lens, including one double plate holder and focusing panel	5 x 7 \$200.00
With B. & L. Tessar, Ic, f.4,5, No. 18	403.00
Graflex Roll Holder	14.50
Graflex Magazine Plate Holder	18.75
Graflex Film Pack Adapter, leather covered	8.75
Leather case for camera and roll holder, with lock and key	19.75
Leather case for camera and magazine holder, with lock and key	22.00
Leather case for six plate or Portrait Film holders	7.75
Extra Graflex Plate holders	4.15
Graflex Cut Film Holders	4.40
Extra lens boards, each	1.20
Premo Film Packs	1.90
Eastman Graflex Roll Film, No. 54, 6 exposures95

The prices of camera and film include the Excise War Tax.

REFER TO FITTING LENSES, PAGE 55.



THE NATURALISTS' GRAFLEX

THE Naturalists' Graflex camera is designed especially for naturalists' use in photographing birds, animals and other nature studies where long focus or tele-photo lenses are required. For inanimate objects, the focusing hood can be used in a vertical position, but when concealment is necessary, the hood can be brought to the horizontal position and focusing done from the rear.

The B. & L. Telegmat $f.6.8$ lens supplied with this camera has a focal length of $14\frac{1}{2}$ inches, giving an image the same size as would be obtained with a 24 inch lens. The brilliancy of the image is greater than with a telephoto system of telephoto attachment and positive lens.

Details

Dimensions, $20\frac{1}{2} \times 6\frac{1}{4} \times 11$; focal capacity, $27\frac{1}{2}$ in.; weight, 8 lbs.; size of lens board, $4\frac{1}{2} \times 4\frac{1}{2}$ in.; minimum focus of lenses accommodated, $14\frac{1}{4}$ in.

The Price

Naturalists' Graflex, without lens, including one double	4 x 5
plate holder and focusing panel	\$216.00
With B. & L. Telegmat Lens, $f.6.8$	349.33
Graflex Magazine Plate Holder	16.50
Extra Graflex Plate Holders	3.00
Graflex Cut Film Holders	3.00
Graflex Roll Holder	13.25
Leather case for camera and roll holder or magazine holder	26.50
Premo Film Packs, 4 x 5	1.10
Eastman Graflex Roll Film No. 53, 6 Exposures55

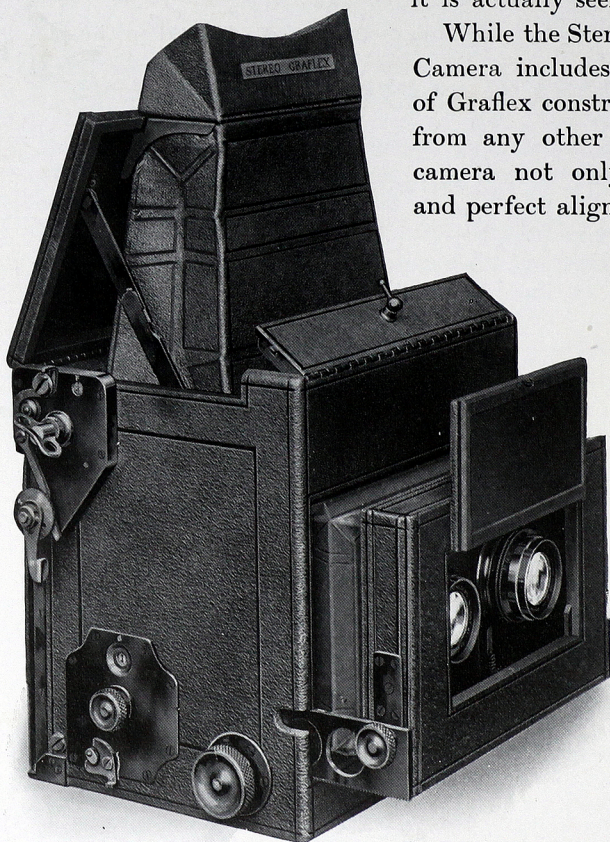
The prices of camera and film include the Excise War Tax.

STEREO AUTO GRAFLEX

THE Stereo Auto Graflex makes two pictures of a subject with every exposure. When placed side by side and viewed through a stereoscope the two pictures blend into one and reproduce the subject in full relief and relative position, producing the effect of roundness, breadth and depth in almost startling actuality. A stereoscopic picture shows the subject as

it is actually seen by both eyes.

While the Stereo Auto Graflex Camera includes every principle of Graflex construction, it differs from any other form of stereo camera not only in its design and perfect alignment but in its



method of focusing. The top of the focusing hood contains a pair of stereo prisms arranged to give a stereoscopic effect when focusing. One image only shows on the ground glass—right side up, and the subject is seen just as the finished print or stereogram will appear when viewed through a stereoscope.

The two lenses are carefully matched and mounted on a lens board with a separation of $3\frac{1}{2}$ inches between their centers. The images are prevented from overlapping by a central irremovable partition extending from the lens board to the plate or film. A rising front allows for adjustment of the foreground in the pictures. The Stereo Graflex has the regular Graflex Focal Plane Shutter giving exposures from time to $\frac{1}{1000}$ of a second.

Details

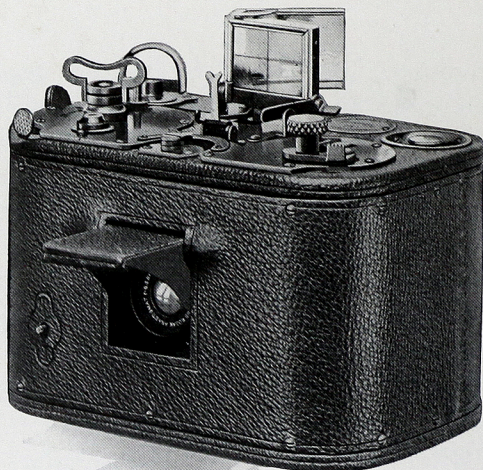
Dimensions when closed, $8\frac{1}{4} \times 9 \times 8\frac{3}{4}$; focal capacity, 8 in.; weight, 8 lbs.; size of lens board, $3 \times 5\frac{3}{4}$ in.; minimum focus of lenses accommodated, $6\frac{1}{4}$ in.

The Price

Stereo Auto Graflex without lenses, including one double plate holder and focusing panel	\$224.00
With matched pair B. & L. Kodak Anastigmat Lenses, f.6.3, No. 3	288.00
Graflex Roll Holder	14.50
Graflex Magazine Plate Holder	18.75
Graflex Film Pack Adapter, leather covered	8.75
Leather case for camera and roll holder, with lock and key	13.75
Leather case for camera and magazine holder, with lock and key	15.00
Extra Graflex plate holders	4.15
Graflex Cut Film Holders	4.40
Extra lens boards each	3.00
Premo Film Packs, 5×7	1.90
Eastman Graflex Roll Film, No. 54, 6 exposures95

The prices of camera and film include the Excise War Tax.

REFER TO FITTING LENSES, PAGE 55.



No. 0 GRAPHIC

A SMALL camera with advantages that go a long way to secure a high percentage of good pictures. With the highly corrected Kodak Anastigmat lens working at $f.6.3$ everything beyond twelve feet will be in focus, and with a smaller lens opening objects at even a lesser distance will be in focus.

The negatives, $1\frac{5}{8} \times 2\frac{1}{2}$ inches, made by the No. 0 Graphic on Eastman Kodak Film Cartridges, have such excellent definition and depth of focus that enlargements made from them up to 8×10 inches, will have all the brilliancy of contact prints.

Exposures of $\frac{1}{10}$ to $\frac{1}{500}$ of a second, and adjustments for prolonged time exposures are provided for by the Graflex Focal Plane Shutter which is built into the camera. This in combination with the splendid lens equipment and the simple operation of the camera makes it possible to secure highly satisfactory results.

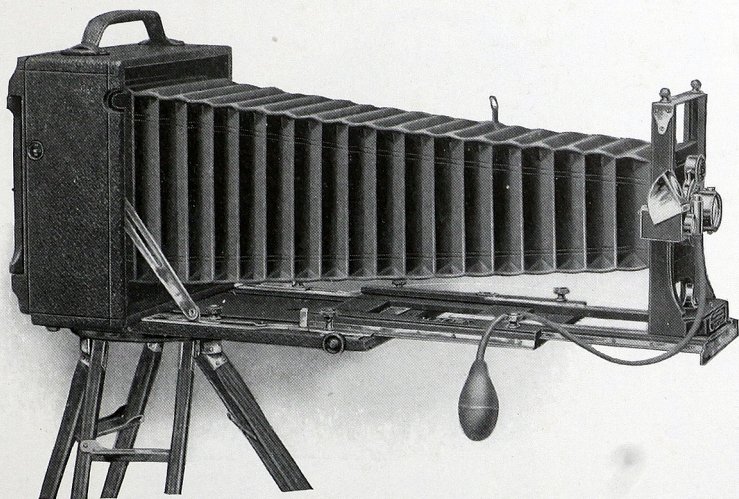
Details

Dimensions, $5 \times 3\frac{1}{2} \times 3\frac{1}{4}$; weight, 25 oz.

The Price

No. 0 Graphic Camera with Kodak Anastigmat Lens, $f.6.3$	$1\frac{5}{8} \times 2\frac{1}{2}$	\$64.00
N. C. Film Cartridge, 6 exposures, No. 12120
N. C. Film Cartridge, 12 exposures, No. 12135
Sole leather carrying case		5.50

The prices of camera and film include the Excise War Tax.

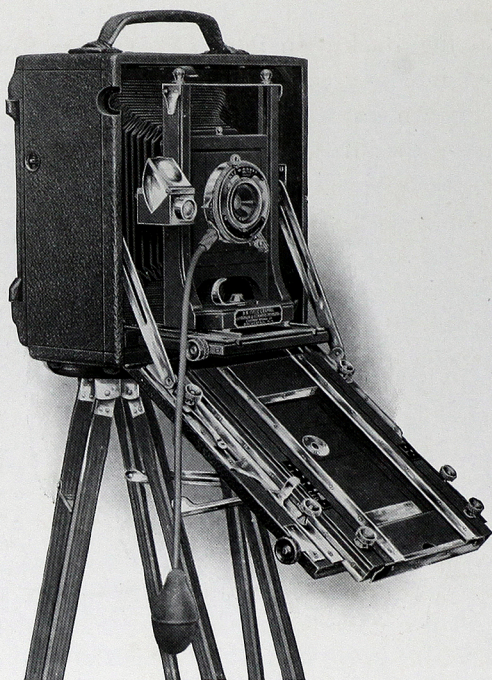


Revolving Back CYCLE GRAPHIC

A CAMERA of great adaptability, built to fill the exacting requirements of advanced photography. The unusually long bellows extension providing for the use of lenses of various focal lengths; the focusing back that can be revolved from horizontal to vertical positions without removal; the adjustable back swing and lens board; the adaptability to Photo-micrographic work of medium magnification; and the compact, rigid construction, all combine to give the satisfactory results for which this camera is noted.

The medium focal length lenses listed with the various sizes of the Revolving Back Cycle Graphic are for use at normal focusing distances for average views, and for close up detail and copying, with the lens racked out to within the limitation of the bellows draw.

The focal capacity provided is more than ample to accommodate the single elements of the Series VIIa, convertible Protar



R. B. Cycle Graphic with Supplementary Wide Angle Bed

lenses, selected for use with this camera, which have a focal length slightly greater than that of the whole lens, adapting the Cycle Graphic to landscape and commercial work, portraits and groups, and wherever true perspective or larger reproductions of distant objects are required.

The camera front moves on telescopic tracks reinforced by angle guides with binding screws locking the bed rigidly in place. The wide base block of the lens support is clamped to the camera bed with a heavy bolt giving the greatest strength and rigidity—adapting the Cycle Graphic to telephoto and other work of a precise nature.

The lens board can be raised or lowered to get the best pictorial effect on the ground glass. This adjustment is self locking at any point.

The Revolving Back is similar to the Graflex Revolving Back and is moved into any position easily and quickly without removal from the camera. The entire back frame can be removed to give access to the interior of the camera. Both Cycle Graphic cameras have the revolving back.

A swing back is provided for the preservation of vertical lines in the subject.

The 5 x 7 Revolving Back Cycle Graphic is easily converted into a film camera by the use of the regular Premo Film Pack Adapter, which is interchangeable with the 5 x 7 Graphic Plate Holders.

Details

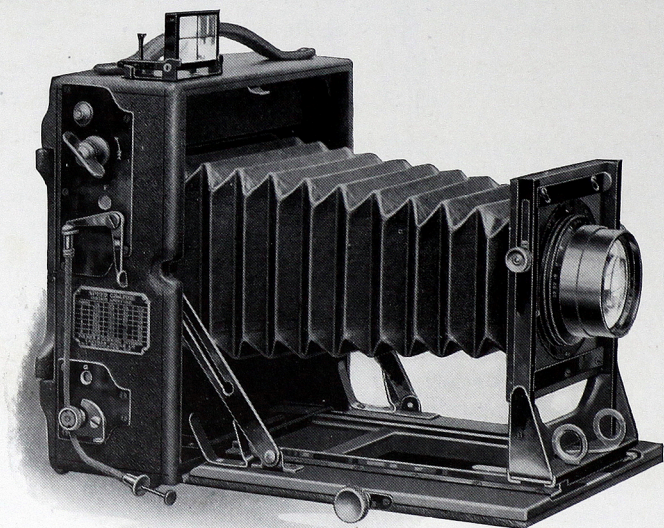
	5 x 7	6½ x 8½
Dimensions	8¾ x 4¼ x 9¼	10¾ x 4½ x 10¾
Focal capacity	22½ in.	26 in.
Weight	6¼ lbs.	7½ lbs.
Size of lens board	3⅛ x 3⅛ in.	4¼ x 4¼ in.

The Price

Including double plate holder and sole leather carrying case

Revolving Back Cycle Graphic with Graphic Rapid Rectilinear Lens and Automatic Shutter	5 x 7 \$110.97	6½ x 8½ \$142.71
Extra for Ser. V, B. & L. Extreme Wide Angle Lens in Volute Shutter	No. 2 51.00	No. 3 57.00
With B. & L. Protar Lens, Series VIIa, and Volute Shutter	No. 10 230.00	No. 13 289.00
Extra Graphic Plate Holders	2.20	2.75
Premo Film Pack Adapters	3.00	
Graphic Cut Film Holders	2.20	2.75
Premo Film Packs	1.90	
Supplementary bed for Wide Angle Lenses	15.00	17.00
Extra lens boards75	.90

The prices of camera and film include the Excise War Tax.



THE SPEED GRAPHIC

THE SPEED GRAPHIC

THE Speed Graphic Camera is made for those desiring Focal Plane Shutter efficiency in a compact folding camera.

The Graflex Focal Plane Shutter is built into the body of the camera, which is made in four sizes, $3\frac{1}{4} \times 4\frac{1}{4}$, 4×5 , $3\frac{1}{4} \times 5\frac{1}{2}$ (post card size), and 5×7 . This shutter gives time exposures of any length and automatic exposures from $\frac{1}{10}$ to $\frac{1}{1000}$ of a second except in the $3\frac{1}{4} \times 4\frac{1}{4}$ model, which differs from the larger models in that it has only four instead of five exposing apertures and the speeds are limited to $\frac{1}{500}$ of a second, which is sufficiently rapid for the short focus lenses fitted to the $3\frac{1}{4} \times 4\frac{1}{4}$ Speed Graphic. The lens front is large enough to take high speed Anastigmatic lenses and firm enough to prevent vibration when the bellows is extended to its full capacity. The rising front allows sufficient movement to cut out objectionable foreground and to enable the camera to be used for architectural subjects.

The back of the Speed Graphic is non-reversible and when making vertical pictures the camera is turned on its side. Provision is made for the Graphic Plate Holder, the Graphic Cut Film Holder as well as the Premo Film Pack Adapter, which provides Eastman Film quality and convenience with its great simplicity and rapidity in daylight loading and film changing.

The Speed Graphic is made from selected kiln-dried mahogany, especially treated to withstand climatic changes, and is covered with morocco leather. All exposed wood parts are ebonized and the metal work is oxidized, giving a camera of attractive appearance. Two tripod sockets are provided for making prolonged exposures in either vertical or horizontal position.

Details

	$3\frac{1}{4} \times 4\frac{1}{4}$	4×5	$3\frac{1}{4} \times 5\frac{1}{2}$	5×7
Dimensions . . .	$5\frac{3}{4} \times 2\frac{3}{4} \times 6\frac{1}{4}$	$6\frac{1}{2} \times 4 \times 6\frac{3}{8}$	$7 \times 3\frac{1}{8} \times 7\frac{1}{2}$	$8\frac{3}{4} \times 3\frac{3}{4} \times 9\frac{3}{8}$
Focal capacity. .	10 in.	12 in.	12 in.	16 in.
Weight	$2\frac{1}{2}$ lbs.	$3\frac{1}{2}$ lbs.	$3\frac{3}{4}$ lbs.	$5\frac{1}{2}$ lbs.
Size of lens board	$2\frac{1}{2} \times 2\frac{1}{2}$ in.	$3\frac{1}{4} \times 3\frac{1}{4}$ in.	$3\frac{1}{4} \times 3\frac{1}{4}$ in.	$3\frac{3}{4} \times 3\frac{3}{4}$ in.

The Price

Including one double plate holder

	$3\frac{1}{4} \times 4\frac{1}{4}$	4×5	$3\frac{1}{4} \times 5\frac{1}{2}$	5×7
Speed Graphic without lens . .	\$ 80.00	\$ 88.00	\$ 88.00	\$104.00
With Kodak Anastigmat Lens . .	No. 31	No. 32	No. 33	No. 34
<i>f</i> .4.5	117.33	131.20	141.33	170.13
With B. & L. Tessar, Series 1c . .	No. 14	No. 15	No. 15a	No. 16
Lens, <i>f</i> .4.5	131.50	148.00	161.00	194.00
*Sole leather carrying case,				
with lock and key	9.50	10.00	10.00	12.75
Extra lens board70	.90	.90	1.10
Extra Graphic Plate Holders . .	2.00	2.00	2.00	2.20
Graphic Cut Film Holders . . .	2.00	2.00	2.00	2.20
Premo Film Pack Adapters . . .	1.50	2.00	2.00	3.00
Premo Film Packs90	1.10	1.10	1.90

*Carrying cases for Speed Graphic Cameras hold the camera and plate holders as follows:
 $3\frac{1}{4} \times 4\frac{1}{4}$, 5 holders; 4×5 , 6 holders; $3\frac{1}{4} \times 5\frac{1}{2}$, 5 holders; 5×7 , 6 holders.

The prices of camera and film include the Excise War Tax.

SPEED GRAPHIC CAMERAS WITH GRAFLEX BACK

If it is desired to use Eastman daylight loading roll film, the back of the Speed Graphic Camera can be altered to take the Graflex Roll Holder described on page 46. With this Graflex back all Graflex attachments can be used with the Speed Graphic Cameras.

The prices for altering backs of Speed Graphic Cameras to take Graflex attachments are given below. These prices include ground glass focusing panel but no plate or film holder.

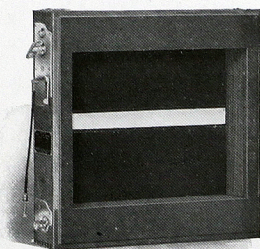
$3\frac{1}{4} \times 4\frac{1}{4}$	4×5	$3\frac{1}{4} \times 5\frac{1}{2}$	5×7
\$13.50	\$13.50	\$13.50	\$14.50

THE GRAFLEX FOCAL PLANE SHUTTER

THERE is no style of shutter that can equal the Graflex for obtaining successful pictures of rapidly moving objects—on the athletic field, swiftly moving traffic, birds and animals in motion and wherever rapid action is required.

The Graflex Focal Plane Shutter has a range of twenty-four instantaneous speeds from $\frac{1}{10}$ to $\frac{1}{10000}$ of a second, and can be adjusted for time exposures of any duration. The shutter has five curtain apertures— $\frac{1}{8}$, $\frac{3}{8}$, $\frac{3}{4}$, $1\frac{1}{2}$ and one the full size of the plate or film. These openings are metal bound to retain their perfect alignment. Attached to the side of the camera is a shutter speed plate giving the approximate shutter speeds in fractions of a second, obtained with the various combinations of the curtain apertures and tension numbers—1 to 6. By the use of the highest tension number and the smallest curtain aperture, $\frac{1}{8}$, the highest shutter speed is obtained. Equal distribution and intensity of light over every portion of the sensitive surface is obtained by operating the shutter curtain immediately in front of the plate or film. There is no falling off in the volume of light passing through the lens during the entire period of exposure. The Graflex Shutter transmits to the plate a higher percentage of light in a given time than any other type of shutter, which means fully timed negatives at high shutter speeds.

The Graflex Focal Plane Shutter shown above is supplied in natural wood finished for use with Eastman View Cameras, the ground glass focusing back being removed from the view camera and the shutter attached in its place. The focusing back is then attached to the Focal Plane Shutter.



Details

	5 x 7	6½ x 8½	8 x 10
Dimensions . . .	8¼ x 8¼ x 2	9¾ x 9¾ x 2½	11½ x 11½ x 2½
Weight . . .	22 oz.	26 oz.	32 oz.

The Price

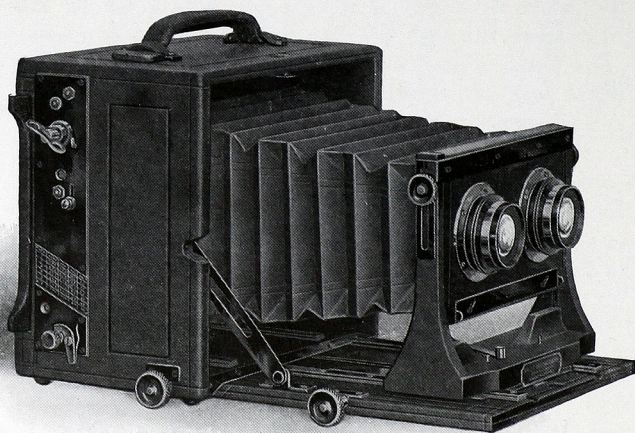
Graflex Focal Plane Shutter, for	5 x 7	6½ x 8½	8 x 10
Eastman View Cameras . . .	\$24.00	\$26.50	\$30.00

STEREOSCOPIC GRAPHIC

THE Stereoscopic Graphic is in many respects like the Stereo Auto Graflex described on page 32, though each camera has exclusive features. The Graflex Focal Plane Shutter is part of the Stereoscopic Graphic, but the Graflex reflecting feature is omitted. Focusing has to be done upon the screen at the back of the camera.

The focal capacity is $12\frac{3}{4}$ inches, accommodating a pair of matched stereo lenses for making stereo pictures. A central partition extending from the lens board to the plate or film prevents the overlapping of images projected by the two lenses. This partition can be easily and quickly removed and a single lens of greater focal length substituted for the stereo lenses, allowing the camera to be used to excellent advantage for regular 5 x 7 pictures.

The front is provided with a rising and lowering adjustment, and the camera has a bellows extension of $12\frac{3}{4}$ inches. The Graflex Focal Plane Shutter is built into the body of the camera,



the shutter being adjusted to give exposures of any duration from time to $\frac{1}{1000}$ of a second.

The front is securely fastened to a wide track of hard milled brass, preventing oscillation and side movement when it is racked out. Focus is adjusted by rack and pinion. The special spring roller partition automatically adjusts itself to lenses of any focal length.

The front platform of the Stereoscopic Graphic can be dropped out of the way when using short focus wide angle lenses for special work, an extra pinion being set in the base of the camera for focusing wide angle lenses.

Details

Dimensions when closed, $8\frac{7}{8} \times 5\frac{1}{2} \times 7\frac{7}{8}$; focal capacity, $12\frac{3}{4}$ in.; weight, 6 lbs.; size of lens board, $3\frac{1}{8} \times 6$ in.; minimum focus of lenses accommodated, $3\frac{3}{4}$ in.

The Price

Stereoscopic Graphic without lenses, including one double plate holder	\$136.00
With matched B. & L. Kodak Anastigmat Lenses, No. 3, <i>f</i> .6.3	200.00
With matched B. & L. Extreme Wide Angle Lenses, Series V, No. 2	200.00
B. & L. Kodak Anastigmat Lens No. 5, <i>f</i> .6.3, for full size plate (5 x 7), extra	48.00
Leather carrying case	13.25
Extra lens boards	1.15
Graphic Plate Holders	2.20
Graphic Cut Film Holders	2.20
Premo Film Pack Adapter	3.00
Premo Film Packs, 5 x 7	1.90

The prices of camera and film include the Excise War Tax.

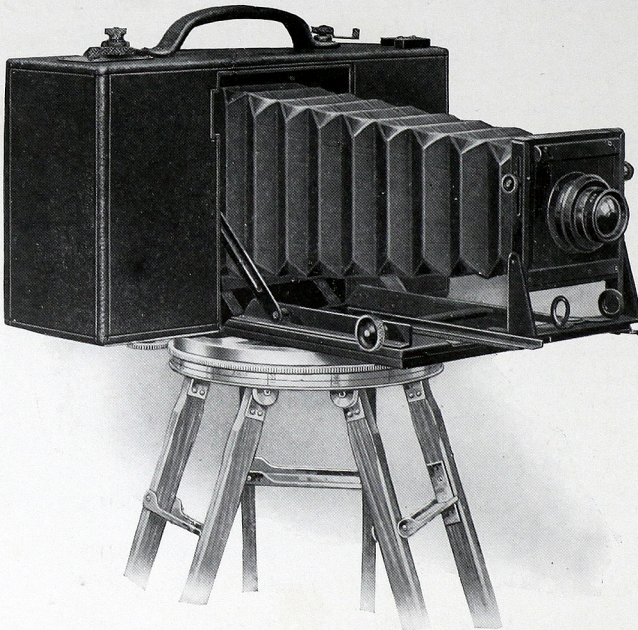
REFER TO FITTING LENSES, PAGE 55.

CIRKUT CAMERAS AND OUTFITS

THE Circuit Camera makes a continuous panoramic picture on Eastman daylight loading roll film. A motor driven mechanism revolves the camera on the tripod top through any angle of view and of any length within the capacity of the roll film, drawing the film at the same time across the exposure slot.

The Cirkut offers innumerable possibilities for profitable pictures. Cirkut groups of large gatherings, conventions, commencements; panoramic views of real estate developments, farm, timber and fruit land, mining properties and views of factories, towns and cities are always in demand.

The Cirkut Camera is operated in the same manner as a regular view camera. The lens is focused upon a ground glass screen in the usual way. The Cirkut can be revolved upon the special tripod head through a complete circle of 360 degrees. A scale is provided giving the approximate length of film required for any



view as it is focused and composed on the ground glass. A register shows the exact amount of film used for each exposure and the amount of unexposed film is easily calculated.

The Cirkut is made in two styles: Cirkut Cameras for panoramic pictures exclusively, and Cirkut Outfits which make panoramic pictures and also 5×7 or $6\frac{1}{2} \times 8\frac{1}{2}$ views upon Eastman Professional Film or plates.

The Revolving Back Cycle Graphic Cameras supplied with Cirkut Outfits Nos. 6 and 8 are fully described on pages 33 to 35.

The Price

No. 5 Cirkut Camera complete, including Special Convertible Lens; $6\frac{1}{4}$, 11 and 14 in., one No. 2 Crown Tripod, one Cirkut Tripod Top, Gears, Key and Carrying Case to hold complete outfit	\$151.59
No. 10 Cirkut Camera complete, including Turner Reich Lens Series II No. 4; $10\frac{1}{2}$, 18 and 24 in. Automatic Shutter, one F. & S. Professional Tripod, one Cirkut Tripod Top, one Bulb and Hose, Gears and two Carrying Cases to hold complete equipment	385.85
No. 10 Cirkut Camera without lens and shutter	297.15
No. 16 Cirkut Camera complete, including Turner Reich Lens Series II; 15, 24 and 36 in. in Automatic Shutter, one F. & S. Professional Tripod, one Cirkut Tripod Top, one Bulb and Hose, Gears and three Carrying Cases to hold complete equipment	629.85
No. 16 Cirkut Camera without lens and shutter	454.75
No. 6 Cirkut Outfit complete, including Revolving Back Cycle Graphic, 5×7 , with Graphic Rapid Rectilinear Lens in Automatic Shutter, one 5×7 double Plate Holder, one $6\frac{1}{2}$ -in. Cirkut Attachment, one Cirkut Tripod Top, one $6\frac{1}{2}$ -in. Tripod Top, one No. 4 Crown Tripod, one Bulb and Hose, Gears and two Carrying Cases to hold complete equipment	214.47
No. 6 Cirkut Outfit with Turner Reich Lens Series II No. 2, in Shutter, Triple Foci, $7\frac{1}{2}$ -12 and 18 in.	265.44
No. 8 Cirkut Outfit complete, including Revolving Back Cycle Graphic, $6\frac{1}{2} \times 8\frac{1}{2}$, with Graphic Rapid Rectilinear Lens in Automatic Shutter, one $6\frac{1}{2} \times 8\frac{1}{2}$ double Plate Holder, one 8-in. Cirkut Attachment, one Cirkut Tripod Top, one $6\frac{1}{2}$ -in. Crown Tripod Top, one No. 4 Crown Tripod, one Bulb and Hose, Gears and two Carrying Cases to hold complete equipment	297.96
No. 8 Cirkut Outfit with Turner Reich Lens Series II No. 4, in Shutter, $10\frac{1}{2}$, 18 and 24-in.	374.07

The prices of cameras include the Excise War Tax.

Cirkut Method Booklet upon request.

CIRKUT FILM

FILM for Cirkut Outfits Nos. 6 and 8 can not be used in Cirkut Cameras Nos. 10 and 16; nor can film for Cirkut Cameras Nos. 10 and 16 be used in Cirkut Outfits Nos. 6 and 8.

The Price

Film for No. 5 Cirkut Camera

White Label

5 in. x 15 in., per roll	\$0.30
5 in. x 20 in., per roll45
5 in. x 30 in., per roll65
5 in. x 42 in., per roll85

For No. 6 Cirkut Outfit

Green Label

6½ in. x 3 ft., per roll	\$.95
6½ in. x 6 ft., per roll	1.90
6½ in. x 10 ft., per roll	3.10

For No. 8 Cirkut Outfit

Green Label

6½ in. x 3 ft., per roll	\$.95
6½ in. x 6 ft., per roll	1.90
6½ in. x 10 ft., per roll	3.10
8 in. x 4 ft., per roll	1.55
8 in. x 8 ft., per roll	3.10
8 in. x 12 ft., per roll	4.65

For No. 10 Cirkut Camera

White Label

6 in. x 5 ft., per roll	\$1.45
6 in. x 10 ft., per roll	2.90

6 in. x 15 ft., per roll	\$4.35
8 in. x 5 ft., per roll	1.90
8 in. x 10 ft., per roll	3.80
8 in. x 15 ft., per roll	5.70
8 in. x 20 ft., per roll	7.60
10 in. x 4 ft., per roll	1.90
10 in. x 6 ft., per roll	2.90
10 in. x 10 ft., per roll	4.80
10 in. x 15 ft., per roll	7.20
10 in. x 20 ft., per roll	9.60

For No. 16 Cirkut Camera

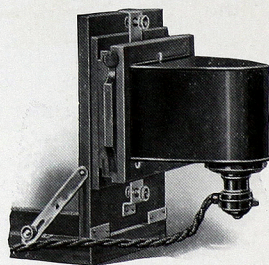
White Label

8 in. x 5 ft., per roll	\$1.90
8 in. x 10 ft., per roll	3.80
8 in. x 15 ft., per roll	5.70
8 in. x 20 ft., per roll	7.60
10 in. x 4 ft., per roll	1.90
10 in. x 6 ft., per roll	2.90
10 in. x 10 ft., per roll	4.80
10 in. x 15 ft., per roll	7.20
10 in. x 20 ft., per roll	9.60
12 in. x 6 ft., per roll	3.45
12 in. x 10 ft., per roll	5.70
12 in. x 15 ft., per roll	8.55
16 in. x 6 ft., per roll	4.60
16 in. x 10 ft., per roll	7.60
16 in. x 20 ft., per roll	15.20

The prices of film include the Excise War Tax.

THE GRAFLEX ILLUMINATOR

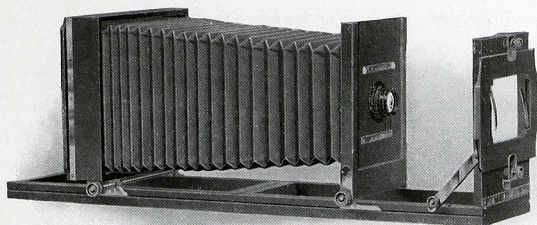
THIS attachment provides properly diffused artificial illumination for making enlargements with the Graflex Enlarging Camera, shown on page 45. The lamp house is provided with a switch socket accommodating a 60 Watt Mazda Lamp. The negative carrier will accept negatives of any size up to 3¼ x 5½ or 4 x 5, and may be adjusted to any required position. The Illuminator can also be tilted to obtain correct alignment in negatives.



Outside Dimensions, 7 x 8¼ x 8¾

The Price

Graflex Illuminator, including 6 feet of flexible cord and plug, without lamp \$8.75



THE GRAFLEX ENLARGING CAMERA

THERE is a great deal of pleasure and satisfaction in making large pictures from small negatives. Varied and beautiful pictorial effects are possible with the Graflex Enlarging Camera and the different grades of Eastman Bromide Paper which afford a choice that will be most suitable for the negative and character of the subject.

Enlargements 8 x 10 and smaller can be made from negatives of any size up to 4 x 5 or $3\frac{1}{4} \times 5\frac{1}{2}$. The No. 3 Kodak Anastigmat Lens having a focal length of $6\frac{1}{8}$ inches is recommended for use with this camera. Lenses of shorter focal length that will properly cover the negative, may also be used. The enlargements can be made by daylight or by artificial light with the Graflex Illuminator shown on opposite page.

Details

Bellows capacity	28 in.
Length of bed	36 in.
Size of lens board	$4\frac{1}{4} \times 4\frac{1}{4}$ in.
Weight	$8\frac{3}{4}$ lbs.

The Price

Graflex Enlarging Camera, 8 x 10, without lens, including one Bromide Paper Holder	\$41.72
With No. 3 Kodak Anastigmat Lens, <i>f</i> .6.3, in barrel with Iris Diaphragm	71.57
Graflex Illuminator, without lamp, provided with six feet of cord and plug (see page 44)	8.75
Extra lens board60

The prices of camera include the Excise War Tax.



GRAFLEX ROLL HOLDER

ALL the advantages of daylight loading, film quality and convenience are obtained with the Graflex Roll Holder and Eastman Graflex Film.

Graflex Roll Holders are interchangeable with plate holders on Graflex Cameras. They may be loaded, in daylight, while attached to the camera, in practically the same manner that a Kodak is loaded. A retarding ratchet is provided allowing the film to be drawn flat after it is in position for exposure, giving a true recording plane. The dark slide permits removal of the holder from the camera before the entire roll has been exposed.

The Price

GRAFLEX ROLL HOLDERS

2 $\frac{1}{4}$ x 3 $\frac{1}{4}$	For Graflex Roll Holder Film No. 50	\$11.50
3 $\frac{1}{4}$ x 4 $\frac{1}{4}$	For Graflex Roll Holder Film No. 51	12.00
3 $\frac{1}{4}$ x 5 $\frac{1}{2}$	For Graflex Roll Holder Film No. 52	13.25
4 x 5	For Graflex Roll Holder Film No. 53	13.25
5 x 7	For Graflex Roll Holder Film No. 54	14.50

Graflex Roll Holders will fit Graflex Cameras only.

EASTMAN GRAFLEX ROLL FILM

No. 50, 3 $\frac{1}{4}$ x 2 $\frac{1}{4}$, 6 Exposures	\$ 0.25
No. 51, 4 $\frac{1}{4}$ x 3 $\frac{1}{4}$, 6 Exposures45
No. 52, 5 $\frac{1}{2}$ x 3 $\frac{1}{4}$, 6 Exposures55
No. 53, 5 x 4, 6 Exposures55
No. 54, 7 x 5, 6 Exposures95

To avoid error order film by number.

The prices of Graflex Film include Excise War Tax.

GRAFLEX FILM PACK ADAPTER

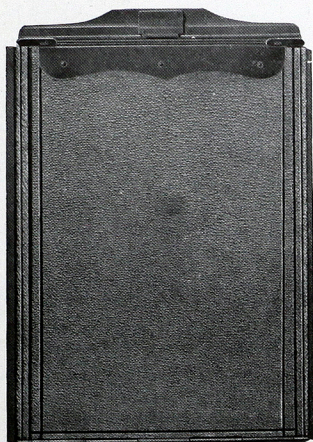
Leather Covered

THE Graflex Film Pack Adapter converts a plate Graflex into a Daylight loading film camera—giving all the advantages of film quality and convenience.

The Adapter is attached just like a plate holder, to all models excepting the 1A and 3A Graflex, which use Kodak roll film exclusively. The dark slide provides for removal of the Adapter at any time before the entire Film Pack is exposed.

To load: Open the hinged back and drop in a Premo Film Pack containing twelve exposures. An important feature is the rapidity and ease with which film is changed for successive exposures, and the provision for removing one or more exposed films from the Pack, immediately after exposure.

Graflex Film Pack Adapters are covered with the same fine grade of leather used on Graflex Cameras.



The Price

	2¼ x 3¼	3¼ x 4¼	4 x 5	3¼ x 5½	5 x 7
Graflex Film Pack Adapter	\$5.50	\$6.00	\$6.75	\$6.75	\$8.75

PREMO FILM PACKS

EACH Pack contains twelve exposures of Eastman N. C. Film, which is non-curling, non-halation and properly orthochromatic.

The Price

2¼ x 3¼	3¼ x 4¼	3¼ x 5½	4 x 5	5 x 7
No. 320, \$0.50	No. 318, \$0.90	No. 322, \$1.10	No. 323, \$1.10	No. 315, \$1.90

The prices of Premo Film Packs include the Excise War Tax.

GRAFLEX HOLDERS IN METRIC SIZES

FOR PLATE AND CUT FILM

The Price

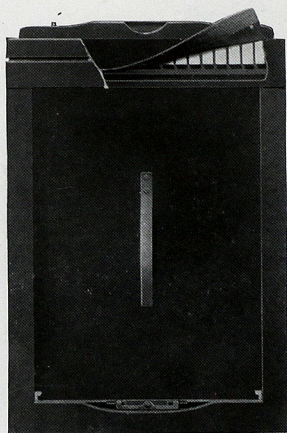
Plate Size

9 x 12 cm.—interchanges with 4" x 5" size, each	3.00
13 x 18 cm.—interchanges with 5" x 7" size, each	4.15

Cut Film Size

9 x 12 cm.—interchanges with 4" x 5" size, each	3.00
13 x 18 cm.—interchanges with 5" x 7" size, each	4.40

THE GRAFLEX PLATE HOLDER



THE Graflex Holder is simple, strong, practical and absolutely light proof. Made of well seasoned cherry, handsomely finished in black, it is fitted with a spring finger cut-off, which excludes all light and prevents fogging of plates when drawing or replacing slides. Two sliding locks hold the plate securely and do away with side and end rabbets, allowing the full width and length of the plate to be exposed with the exception of about $\frac{1}{16}$ of an inch at one end.

The Price

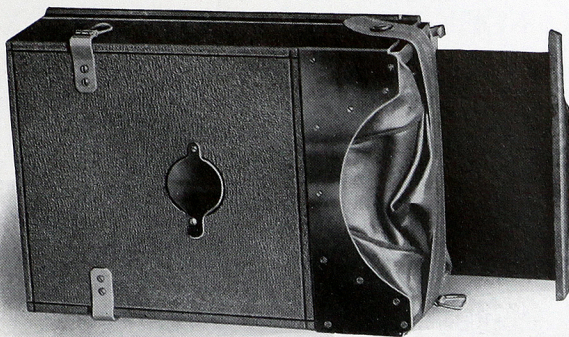
$2\frac{1}{4} \times 3\frac{1}{4}$, each . . .	\$2.00	4×5 , each . . .	\$3.00
$3\frac{1}{4} \times 4\frac{1}{4}$, each . . .	3.00	$3\frac{1}{4} \times 5\frac{1}{2}$, each . . .	3.00
5×7 , each	\$4.15		
$3\frac{1}{4} \times 4\frac{1}{4}$ Graflex Cut Film Holders, each	\$3.00		
4×5 Graflex Cut Film Holders, each	3.00		
5×7 Graflex Cut Film Holders, each	4.40		

THE GRAPHIC PLATE HOLDER

DESIGNED for use with Graphic Cameras, Graphic Plate Holders are not interchangeable with Graflex Holders. The principal features are the spring finger cut-off, which prevents the entrance of light when drawing or replacing the dark slide, the spring on the septum, the sliding locks and the absence of side rabbets. Made of selected cherry in natural finish.

The Price

$3\frac{1}{4} \times 4\frac{1}{4}$, each . . .	\$2.00	5×7 , each . . .	\$2.20
4×5 , each . . .	2.00	$6\frac{1}{2} \times 8\frac{1}{2}$, each . . .	2.75
$3\frac{1}{4} \times 5\frac{1}{2}$, each . . .	2.00	8×10 , each . . .	3.00
Graphic Cut Film Holders, $3\frac{1}{4} \times 4\frac{1}{4}$, $3\frac{1}{4} \times 5\frac{1}{2}$, 4×5 , 5×7 , $6\frac{1}{2} \times 8\frac{1}{2}$ and 8×10 , same price as Plate Holders.			



THE GRAFLEX MAGAZINE PLATE HOLDER

THE Graflex Magazine holds twelve glass plates, each in a separate metal septum. Each septum is consecutively numbered on the back, the number appearing at a ruby window in the back of the magazine as each exposure is made. When a plate is exposed the septum is drawn into a leather bag attached to the end of the magazine, by means of a draw rod, and reinserted by hand in the rear of the magazine holder.

Springs at the back of the magazine force the septums forward, and bring the plate in the forward septum into exact register. It is not necessary to expose all the plates before development, as one or more can be removed at any time, in the dark room. The Magazine Holder may be removed from the camera at any time, as the dark slide effectually prevents the light from reaching the plates.

Details

	2¼ x 3¼	3¼ x 4¼	4 x 5	3¼ x 5½	5 x 7
Dimensions	5x3½x2½	6¼x2¼x4¼	7¼x2¾x5	7¾x2¼x4½	9¼x2½x6¼
Weight . .	14 oz.	1½ lbs.	2 lbs.	2 lbs.	3½ lbs.

The Price

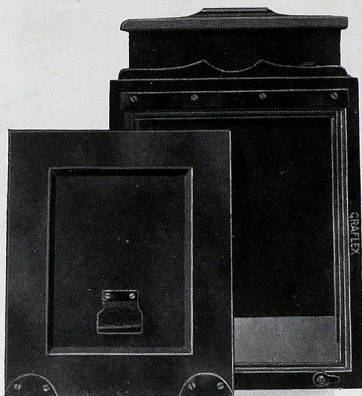
2¼ x 3¼	Graflex Magazine Plate Holder	\$13.25
3¼ x 4¼	Graflex Magazine Plate Holder	15.50
4 x 5	Graflex Magazine Plate Holder	16.50
3¼ x 5½	Graflex Magazine Plate Holder	17.00
5 x 7	Graflex Magazine Plate Holder	18.75

GRAFLEX COLOR PLATE HOLDER

DESIGNED to provide correct register of focus in color photography without reversal of the ground glass focusing screen.

The holders will accept Autochrome Plates or other color plates exposed through a screen.

When using Autochrome Plates, a sheet of black cardboard one thirty-second of an inch in thickness should be placed in the holder in order that the sensitized surface of the plate may be brought into correct register. When making photographs on color plates, which are exposed through a lined screen, it is unnecessary to use the cardboard backing, as the thickness of the screen brings the sensitized surface of the plate into the correct position. Receding springs compensate for glass of varying thickness.



The Price

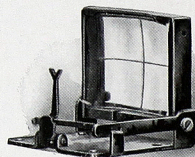
2¼ x 3¼, each . . .	\$6.00	4 x 5, each . . .	\$7.50
*3¼ x 4, each . . .	6.50	3¼ x 5½, each . . .	8.00
3¼ x 4¼, each . . .	7.00	5 x 7, each . . .	9.00

*Lantern Slide.

GRAPHIC SIGHT FINDER

A DIRECT vision, folding sight finder that is attached to the top of the camera. The subject will be centered on the plate or film when the point where the horizontal and vertical lines that are engraved on the finder lens are seen in the notch in the top of the vertical sight bar.

The finder folds compactly. Pressure upon a spring automatically brings the lens and sight bar into position for viewing.



The Price

3¼ x 4¼	\$4.00	4 x 5	\$4.00
3¼ x 5½	4.00	5 x 7	5.50

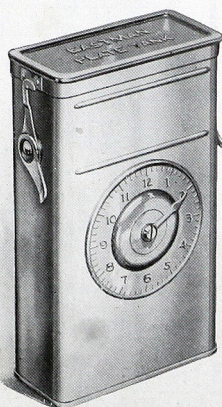
EASTMAN PLATE TANK

THE best photographic results are dependent upon correctly developed negatives.

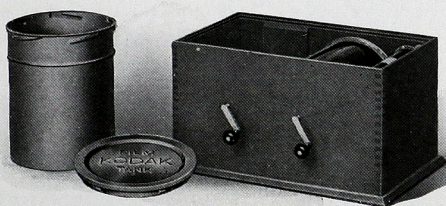
With the Eastman Plate Tank any number up to twelve plates may be developed at one time, by the time and temperature method. And all of the negatives will be of uniform quality.

The Price

Eastman Plate Tank, 4 x 5, for
4 x 5, 3¼ x 5½, 3¼ x 4¼ and
2¼ x 3¼ plates \$4.00
Eastman Plate Tank, 5 x 7 . . 6.00



KODAK FILM TANK



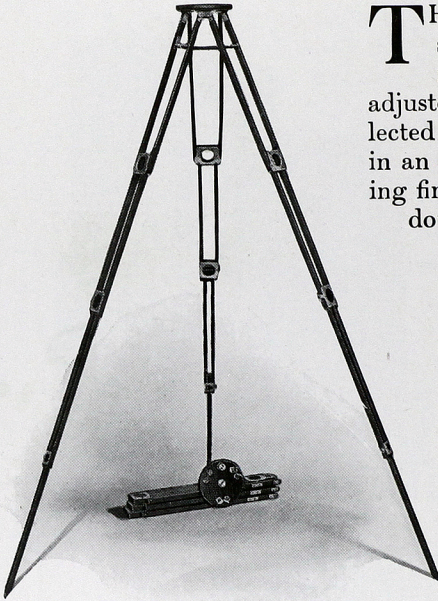
EASTMAN Graflex Film for Graflex Roll Holders and Kodak Film for the 1A and 3A Graflex Cameras can be developed in the Kodak Film Tank.

The "daylight all the way" method of development is not only convenient—it greatly simplifies making excellent negatives.

The Price

3½-inch Kodak Film Tank, for 3¼ x 5½ 3A Kodak Film, 2½ x 4¼
1A Film and 3¼ x 2¼ Eastman Graflex Film No. 50 \$6.00
5-inch Kodak Film Tank, for 4¼ x 3¼ Eastman Graflex Film No. 51, 7.00
7-inch Kodak Film Tank, for 5½ x 3¼ Eastman Graflex Film No. 52,
5 x 4 Eastman Graflex Film No. 53 and 7 x 5 Graflex Film No. 54, 8.50

THE CROWN TRIPOD



THE Crown is a four-section telescopic folding tripod, absolutely rigid, quickly set up and readily adjusted for height. It is made of selected straight-grained cherry, soaked in an oil bath for ten days before being finished. The wood is then rubbed down and shellaced, rendering it extremely tough and practically waterproof.

All binding screws on lower sections of the tripod are "upset" and cannot be lost. Taper pins in the ear pieces of the head fit snugly into metal tipped sockets of the legs, preventing loose joints and side play. Expansion brackets in the upper section make it impossible for the legs to be detached from the head until brackets are folded.

Details

	No. 1	No. 2	No. 3	No. 4
Closed	16 $\frac{1}{4}$ ins.	17 $\frac{1}{4}$ ins.	19 $\frac{1}{2}$ ins.	19 $\frac{1}{2}$ ins.
Extended	4 $\frac{1}{3}$ ft.	4 $\frac{2}{3}$ ft.	5 $\frac{1}{2}$ ft.	5 $\frac{1}{2}$ ft.
Weight	36 ozs.	65 ozs.	70 ozs.	84 ozs.

The Price

No. 1 Crown Tripod with 4-inch top	\$ 9.25
No. 2 Crown Tripod with 6-inch top	9.75
No. 3 Crown Tripod with 6-inch top	11.50
No. 4 Crown Tripod with 6 $\frac{1}{2}$ -inch top	13.25

CARRYING CASE FOR CROWN TRIPODS

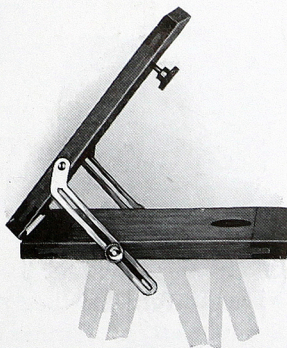
A CASE consisting of a long compartment for the Crown Tripod legs, and a smaller compartment attached to the side to hold the tripod top.

The Price

No. 1 Sole Leather	\$ 6.75	No. 3 Sole Leather	\$ 8.75
No. 2 Sole Leather	7.25	No. 4 Sole Leather	10.00

THE CROWN TILTING TRIPOD TOP

THE Crown Tilting Tripod Top, for use with Crown Tripods, is hinged in the center, allowing quick and rigid adjustment of the camera from horizontal to vertical or any intermediate position without moving or adjusting the tripod legs. These tilting adjustments, within the limitation of the swing back of the camera used, are especially helpful when photographing architectural subjects, as well as small objects that cannot conveniently be attached to a support.

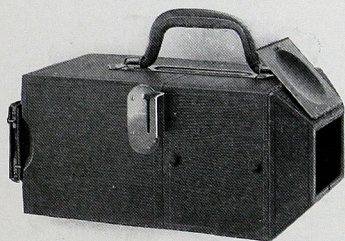


When ordering it is necessary to give the number of the tripod or the diameter of the tripod top with which the tilting top is to be used.

The Price

No. 1 Crown Tilting Tripod Top, for 4 inch Tripod Head .	\$2.75
No. 2 Crown Tilting Tripod Top, for 6 inch Tripod Head .	3.30
No. 4 Crown Tilting Tripod Top, for 6½ inch Tripod Head .	4.15
Professional Crown Tilting Tripod Top, for 11½ inch Tripod Head	9.00

F. & S. FINGER PRINT CAMERA



A THOROUGHLY practical camera for securing accurate records of finger prints. It is also readily adapted for other uses where accurate photographic records are desired. For quickly obtaining a picture of a small pattern, signature, formula, label or portion of printed or written matter.

Details

Dimensions, 11¾ x 6 x 6; weight, with batteries, 5 lbs. 8 ozs.

The Price

F. & S. Finger Print Camera complete with Kodak Anastigmat Lens, *f*.6.3, shutter, two batteries, ten lamps and one double plate holder, 2¼ x 3¼ \$52.00

Takes all accessories made to fit the Graflex Junior, 2¼ x 3¼ (see page 15).

KODAK ANASTIGMAT *f*.4.5



THE Kodak Anastigmat Lens *f*.4.5 possesses all of the qualities essential to high-speed photography with Graflex Cameras or the Graflex Focal Plane Shutter, and is also especially suitable for home portraiture, groups, landscapes and other pictorial subjects.

The excellent definition and uniform illumination throughout the area of the perfectly flat field, obtainable with the full aperture *f*.4.5, fully meets the requirements of the amateur and professional photographer, who must frequently work under unfavorable light conditions.

The lenses are compactly mounted and provided with Iris Diaphragm, actuated by an outer ring bearing the numbers of the stop system. The mounting is finished throughout in black lacquer.

Kodak Anastigmat, *f*.4.5

No.	Size of Plate covered with Stop <i>f</i> .4.5 Inches	Equivalent Focus Inches	PRICE
			Lens in barrel with Iris Diaphragm
30	2 $\frac{1}{4}$ x 3 $\frac{1}{4}$	4 $\frac{1}{2}$	\$31.00
31	3 $\frac{1}{4}$ x 4 $\frac{1}{4}$	5 $\frac{1}{2}$	35.00
32	4 x 5	6 $\frac{1}{2}$	40.50
33	3 $\frac{1}{4}$ x 5 $\frac{1}{2}$	7 $\frac{1}{2}$	50.00
34	5 x 7	8 $\frac{1}{2}$	62.00

B. & L. Tessar, *Series Ic*, *f*.4.5

No.	Size of Plate covered with Stop <i>f</i> .4.5 Inches	Equivalent Focus Inches	PRICE	
			Lens in Barrel with Iris Diaphragm	Lens Fitted with Volute Shutter
13	2 $\frac{1}{2}$ x 3 $\frac{1}{2}$	4 $\frac{1}{2}$	\$ 42.00	\$ 65.00
14	3 $\frac{1}{4}$ x 4 $\frac{1}{4}$	5 $\frac{1}{2}$	48.00	71.00
15	4 x 5	6 $\frac{1}{2}$	56.00	81.00
15a	5 x 7	7 $\frac{1}{2}$	68.00	93.00
16	5 x 8	8 $\frac{1}{2}$	84.00	111.00
17	6 $\frac{1}{2}$ x 8 $\frac{1}{2}$	9 $\frac{7}{8}$	135.00	162.00
18	8 x 10	11 $\frac{3}{4}$	190.00
18a	10 x 12	14 $\frac{3}{4}$	245.00
19	11 x 14	15 $\frac{5}{8}$	295.00
20	14 x 17	19 $\frac{1}{2}$	420.00

B. & L. Protar, *Series VIIa*

No.	Size of Plate covered with Full Aperture Inches	Equivalent Focus of Single Protars Inches		Combined Equivalent Focus Inches	Speed f	PRICE	
		Front Lens	Back Lens			Lens in Barrel with Iris Diaphragm	Lens fitted with Aluminum Volute Shutter
4	4 x 5	8 $\frac{3}{4}$	8 $\frac{3}{4}$	5 $\frac{1}{8}$	6.3	\$ 64.00	\$ 87.00
5	4 $\frac{1}{4}$ x 6 $\frac{1}{2}$	11 $\frac{3}{8}$	8 $\frac{3}{4}$	5 $\frac{3}{8}$	7.0	70.00	93.00
6	4 $\frac{1}{4}$ x 6 $\frac{1}{2}$	13 $\frac{3}{4}$	8 $\frac{3}{4}$	6 $\frac{1}{8}$	7.7	79.00	104.00
7	4 $\frac{1}{2}$ x 7 $\frac{1}{4}$	11 $\frac{3}{8}$	11 $\frac{3}{8}$	6 $\frac{3}{8}$	6.3	75.00	98.00
8	5 x 7	13 $\frac{3}{4}$	11 $\frac{3}{8}$	7	7.0	84.00	109.00
10	5 x 8	13 $\frac{3}{4}$	13 $\frac{3}{4}$	7 $\frac{7}{8}$	6.3	92.00	117.00
11	6 $\frac{1}{2}$ x 8 $\frac{1}{2}$	16 $\frac{3}{8}$	13 $\frac{3}{4}$	8 $\frac{1}{2}$	7.0	107.00	132.00
12	6 $\frac{1}{2}$ x 8 $\frac{1}{2}$	18 $\frac{7}{8}$	13 $\frac{3}{4}$	9 $\frac{1}{8}$	7.7	132.00	159.00
13	6 $\frac{1}{2}$ x 8 $\frac{1}{2}$	16 $\frac{3}{8}$	16 $\frac{3}{8}$	9 $\frac{1}{4}$	6.3	122.00	147.00
14	7 x 9	18 $\frac{7}{8}$	16 $\frac{3}{8}$	10	7.0	147.00	174.00
15	7 x 9	23 $\frac{1}{4}$	16 $\frac{3}{8}$	10 $\frac{7}{8}$	7.7	173.00	200.00
16	7 x 9	18 $\frac{7}{8}$	18 $\frac{7}{8}$	10 $\frac{3}{8}$	6.3	171.00	198.00
17	8 x 10	23 $\frac{1}{4}$	18 $\frac{7}{8}$	11 $\frac{7}{8}$	7.0	197.00	224.00
18	8 x 10	27 $\frac{1}{8}$	18 $\frac{7}{8}$	12 $\frac{3}{4}$	7.7	232.00	259.00
19	8 x 10	23 $\frac{1}{4}$	23 $\frac{1}{4}$	13 $\frac{1}{4}$	6.3	216.00	243.00

FITTING LENSES

THE focal length of the lens selected must be suitable for the Graflex camera with which it is to be used, and the lens must also be correctly fitted and mounted so that the flange is parallel to the sensitive film or plate, if the best photographic results are expected. Therefore, in justice to ourselves, and for the purpose of avoiding errors, our guarantee applies only to cameras that are shipped from our factory with lenses attached.

When lenses of suitable focal length are sent to us for fitting a nominal charge will be made for the work.

Wide Angle Lenses cannot be used with Graflex Cameras.

TERMS

THE prices in this catalogue are strictly net, except to regular dealers who carry our goods in stock. THESE PRICES, OWING TO UNSETTLED CONDITIONS, ARE, HOWEVER, SUBJECT TO CHANGE WITHOUT NOTICE. For the convenience of our customers we recommend that they make their purchases from a dealer in photographic goods, as by so doing they can save both time and transportation charges.

Eastman Kodak Company

Folmer & Schwing Department

Rochester, N. Y.