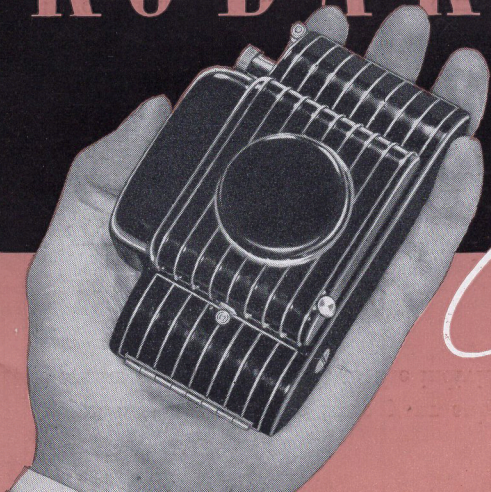


KODAK BANTAM

Special

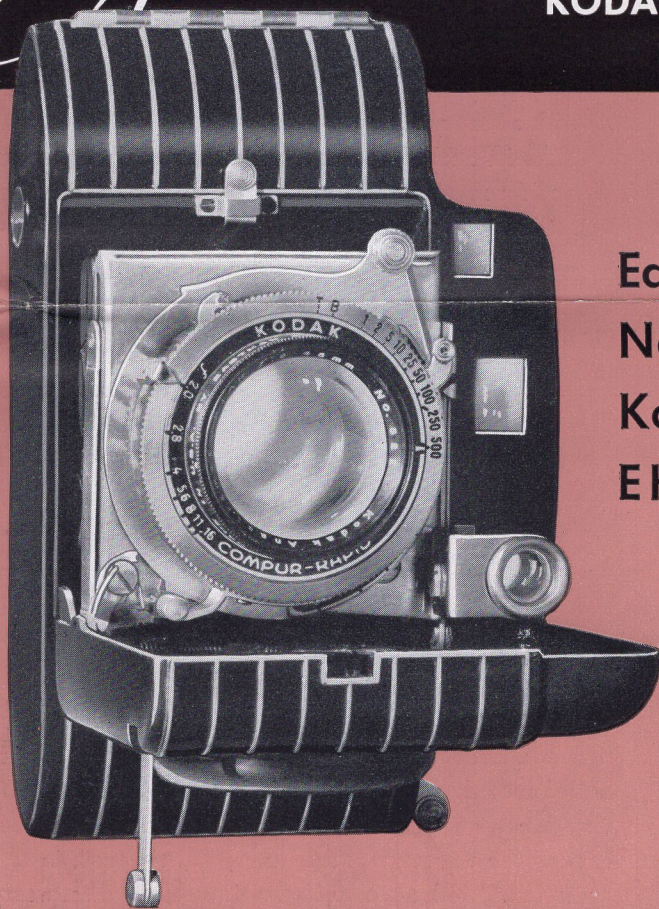


KODAK BANTAMS
f.4.5 AND f.5.6

KODAK BANTAM

Special

A BRILLIANT PRECISION
MINIATURE CAMERA FOR
BLACK-AND-WHITE AND
KODACHROME PICTURES



Equipped with the
New High-Speed
Kodak Anastigmat
EKTAR f.2.0 Lens
and Coupled
Military Type
Range Finder

Features

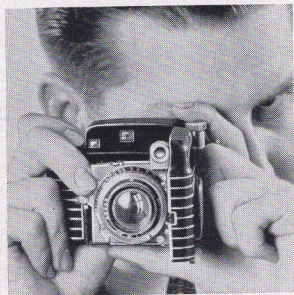
OF KODAK BANTAM SPECIAL

A NEW CAMERA CONCEPTION

HERE is a Kodak that establishes a completely new level in camera design. Unsurpassed in ability, it combines this quality with a beauty of line that instantly sets it apart from the usual "miniature." Not only does its finely machined case, when closed, protect the superb equipment, but it is shaped for maximum symmetry and convenience in the hand. Extremely precise and versatile, Bantam Special has at the same time the appearance, "feel," and balance of a choice and exquisitely made instrument.

EKTAR f.2.0 ANASTIGMAT

NOTABLE feature of the Bantam Special is its super-speed EKTAR *f*.2.0 (45 mm.) lens—a high-precision, six-element Kodak Anastigmat. Corrected to the highest degree, the EKTAR performs outstandingly even when "wide open." Regardless of conditions, it can be counted on for the microscopically sharp negatives necessary for big, richly detailed enlargements. Able companion to the EKTAR lens is the Compur-Rapid shutter. Its nine speeds—from 1 to 1/500 second—capitalize to the full the EKTAR'S ability to cope with swift action or difficult light.



COUPLED RANGE FINDER

SUPPLEMENTING the superlative lens-and-shutter combination is a built-in, military-type, split-field range finder. Sealed into the same housing occupied by the brilliant view finder, and coupled with the focusing mechanism, it enables the user to find the range, and to focus, in one operation. With a Bantam Special you need never worry

about how far you are from your subject. A focusing eyepiece on the range finder permits quick adjustment to the individual user's vision.

OTHER FEATURES

SMARTLY styled die-cast and machined aluminum case. Tough, highly polished, black baked-enamel finish, with contrasting, raised aluminum ribbing. Metal operating parts, stainless steel or chromium finish. Kodak Anastigmat EKTAR $f.2.0$ lens has focal length of 45 mm. Range of diaphragm, $f.2$ to $f.16$. Focus from 3 feet to infinity. Depth of focus at 10 feet and $f.16$, from $4\frac{1}{2}$ feet to infinity. Compur-Rapid shutter has 9 speeds, from 1 to 1/500 second, "time" and "bulb" actions. Lever shutter release (plunger type or cable release may be added). Camera closes when focusing knob has been pushed just beyond infinity position. Opening camera sets focus automatically at infinity. Flush-type sliding film window. Extensible winding knob, for greater convenience. Film locks automatically in centered position for each exposure. Hinged back. Special film-pressure plate. Tripod socket for horizontal position. Length, $4\frac{7}{8}$ "; width, $3\frac{1}{8}$ "; thickness, $1\frac{3}{16}$ ". Weight, 16 ounces.

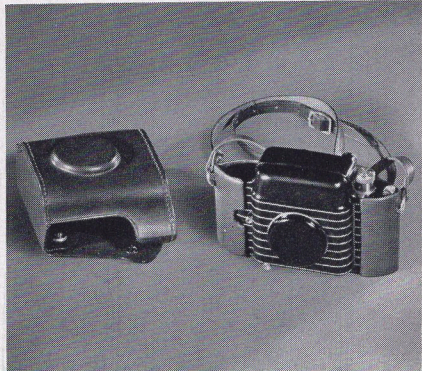
UNUSUALLY LOW PRICE

KODAK Bantam Special is a remarkable camera from every viewpoint. Compare it with other cameras and you will agree that its price . . . only \$87.50 . . . is low indeed for an instrument of such outstanding quality. This low price includes the sportsman's field case shown at the right below.

CARRYING CASES



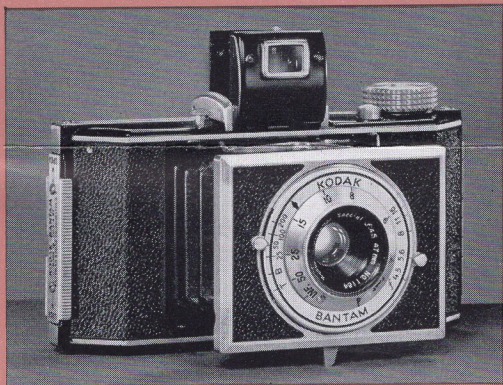
KODAK Bantam Special is supplied complete with a two-piece sportsman's field case of smooth, tan sole leather (right). Equipped with neckstrap, this practical case keeps the Bantam Special ready for instant use. Sells separately at \$8.50. The Combination Case (left) also is made of tan sole leather. Clips in cover hold lens attachments. With shoulder and hand straps, retails at \$7.



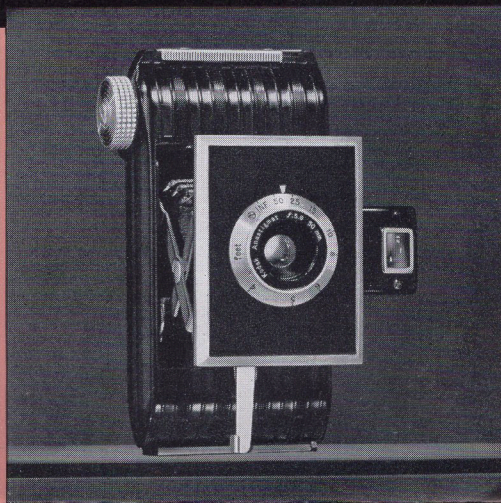
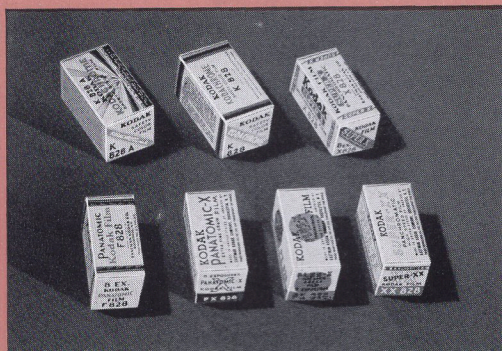
KODAK BANTAMS **f.4.5 AND f.5.6**

KODAK BANTAM f.4.5 (below)

THE latest in Kodaks, another in the popular line of Kodak Bantams that fit in the palm of your hand. (Yet modern photo-finishing methods give you $2\frac{3}{4}$ x 4-inch prints at moderate cost.) The Kodak Anastigmat Special f.4.5 lens easily bags difficult subjects with the aid of the 1/200-second shutter. Plunger-type shutter release is located on the body at the side of the optical eye-level finder. Die-cast aluminum case covered with black, morocco-grained Kodadur. Retail at \$27.50.



KODAK FILMS FOR BANTAMS



KODAK BANTAM f.5.6 (above)

THIS splendid performer has a molded case, with die-cast aluminum front finished in glistening black enamel. The capable Kodak Anastigmat f.5.6 lens focuses from four feet to infinity. Setting-type shutter for time, "bulb," 1/25, 1/50, or 1/100-second exposures. Retail at \$16.50.

KODAK Bantam Special, Kodak Bantams f.4.5 and f.5.6 load with the following 8-exposure roll films.

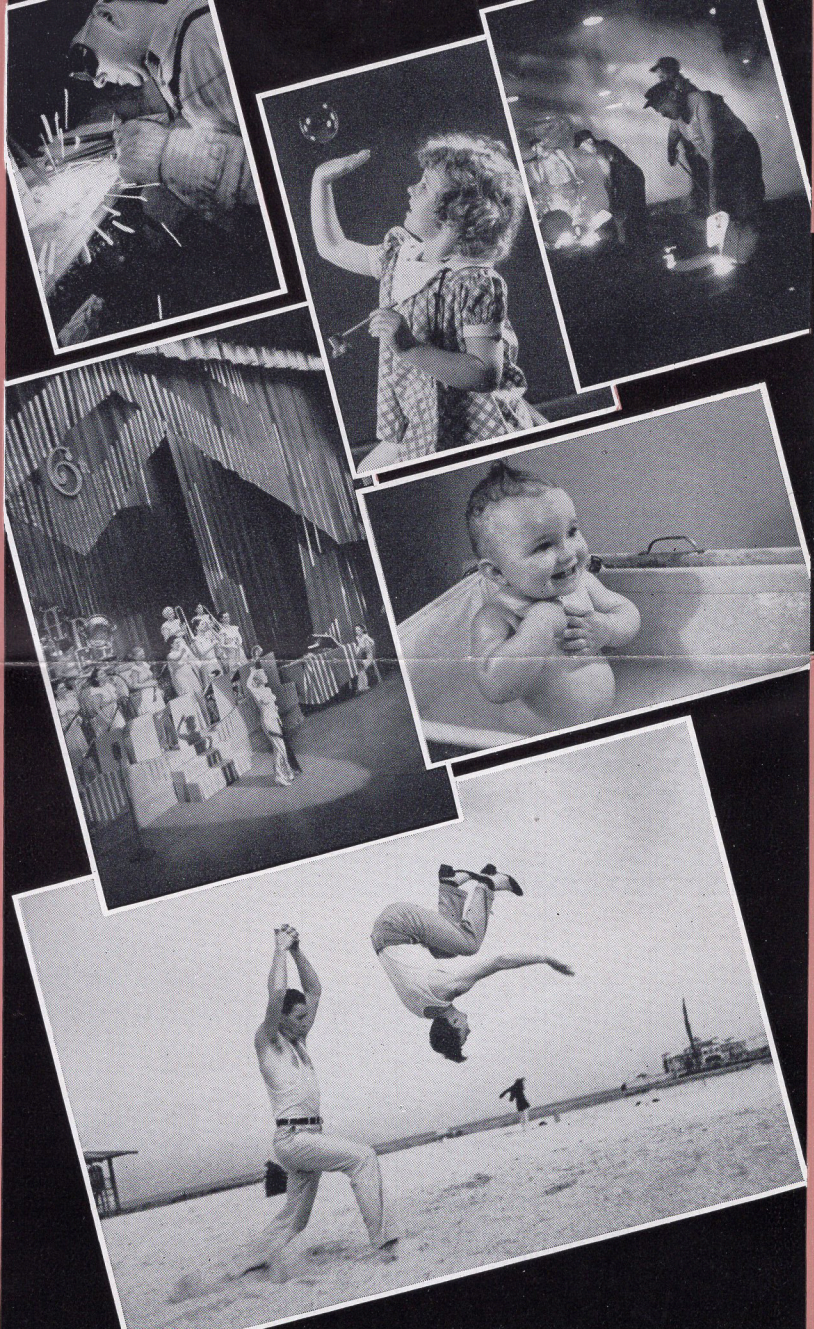
Black-and-white—Three new Kodak Films at 25 cents a roll: fine-grain, fast Plus-X (PX828), finer-grain Panatomic-X (FX828), and extremely fast Super-XX (XX828). Also Kodak Panatomic (F828) and Super-X (X828) at 20 cents a roll, and Infra-Red (IR828) at 25 cents a roll.

Kodachrome—Brilliant full-color transparencies are easily made with Kodachrome Film No. K828 or, under Photoflood lighting, No. K828A. The price, \$1.35 per roll, includes processing.

**KODACHROME . . .
FOR GORGEOUS
FULL-COLOR**

A wide range of black-and-white pictures, outdoors and in, lead up to the climax—gorgeous full-color Kodachrome transparencies which can either be viewed in their original size by transmitted light, or mounted in slides for large-size projection on the home screen. Ideal projection is obtained with the Kodaslide Projector, which retails at \$48.50. For taking Kodachrome pictures of extremely distant landscapes, the Kodachrome Haze Filter is provided. Kodachrome Filter for Photoflood permits K828 Film to be used under Photofloods and Type A Kodachrome Filter for Daylight should be used when exposing Type A Kodachrome Film in daylight. Kodachrome Filters: for Kodak Bantam Special, \$2.50 each; for Kodak Bantams, f.4.5 and f.5.6, \$2.00 each.

*Reduced from standard
2 3/4 x 4-inch enlargements.*



YOU must see the Kodak Bantam Special, hold it to your eye, really get the feel of this superb precision instrument. Stop soon at our camera counter to go over its many fine points.

PHILIP MORRIS & CO.
CAMERA DEPT.
NASHUA, N. H.