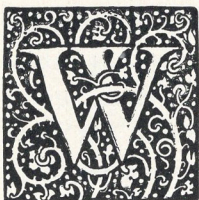




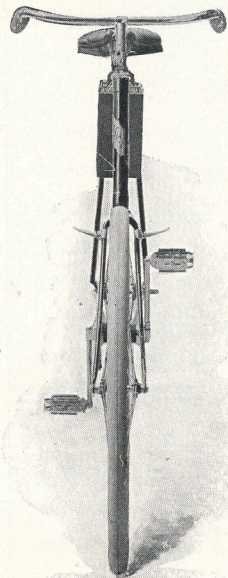
Bicycle Kodaks

Bicycle Kodaks

Copyrighted 1897
by Eastman Kodak Co.
Rochester, N. Y.



WHEN the cycle paths lie deep with snow; when the steed of steel has been carefully put away for the season, when the leafless trees bow before the wintry blast and the night wind whistles weirdly in the chimney till its moan dies away in a ghostly cadence—'tis then that the cyclist in his cozy corner by the glowing fire lives over again his pleasant days awheel. Once more he is out among the fields, flying upon his air-shod steed along a smooth stretch of road, or lolling lazily beneath the friendly shade of a giant oak. He smiles quietly as he recalls his struggles with a punctured tire, the seemingly endless hills which he climbed under a blazing sun—time leaving to his memory only the humorous side of his mishaps and softening their hardships. Regretfully he sighs as he recalls the fact that he has nothing but his poor unreliable memory to bring back those pleasant scenes. No pictures of the river with which he grew to be so friendly in his rambles awheel along its banks—no pictures of its quiet pools, its rippling runs or roaring rapids. No pictures of the quaint inn where he stopped to dine or of the quiet



village street—no pictures of the green fields, the quiet cattle contentedly chewing the cud as they stood mid-leg in the limpid brook and no pictures of the friends whose gay companionship added so much to the pleasures of his outings. Each winter he has resolved that another summer he would add a camera to his outfit, but when the riding season has opened the inconvenient size and shape of the cameras, their bulky accessories, the trappy methods of attaching them to the wheel have discouraged him, and another summer slips away with no suitable mementoes of his wheeling trips.

But in 1897 he will carry a camera—a Bicycle Kodak. The Bicycle Kodaks are so light as to add no perceptible weight to the wheel and for 1897 we have prepared a line of carrying cases for them that are light, convenient and practical. They are the result of a long series of experiments, are made to withstand wear and tear and have been given severe tests on all kinds of roads.

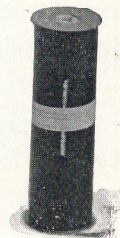
The cameras for which they are made are of the latest models and are all constructed on our Film Cartridge System by which they can be Loaded in Daylight. For all tourists they are the best and most convenient cameras made—for the wheelman they are the only practical instruments.

A roll of film for 12 exposures weighs but a few ounces, where an equivalent in glass plates would weigh pounds, it may be carried in the pocket without inconvenience and being as flexible as paper it cannot break—an obvious advantage over glass plates.

THE CARTRIDGE SYSTEM.

In the cartridge system of film photography as exemplified in the Pocket Kodak, the Bullet, the Bulls-Eye, the Falcon and the Cartridge Kodak, the film is put up in light-tight rolls that may be inserted in the camera in broad daylight. Extending the whole length of the strip of film and several inches beyond each end is a strip of black paper, which in connection with the flanges on the spool, forms a light-proof cartridge.

After inserting the spool in the camera and threading up the black paper, the camera is closed and the key turned until the black paper has been reeled off and the sensitive film brought into place in the focal plane. The black paper runs with and behind the film, and at proper intervals is marked in white ink with the number of the section of film, 1, 2, 3, etc. In the back of the camera is a small window of red celluloid through which the figures appear as the key is turned. The figures as seen through the window show just how far to turn the key and how many exposures have been made. After all the exposures have been made a few



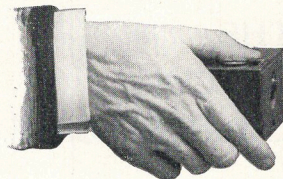
FILM CARTRIDGE.

extra turns of the key entirely cover the film with black paper and the camera may be unloaded in daylight.

The pull of the roll-holder is upon one section only (the black paper running the full length of and beyond the ends of the film); a great improvement over other types, where, owing to a piece of black paper being attached to each end of the film, there are three sections and, therefore, a liability to pull apart.



THE POCKET KODAK.



Measures $2\frac{1}{4} \times 2\frac{7}{8} \times 3\frac{3}{8}$ inches, makes a picture $1\frac{1}{2} \times 2$ inches, and weighs only 6 ozs. Length of focus of lens, $2\frac{1}{2}$ inches.

Built on the "Cartridge" system and can be loaded in daylight. Has improved rotary shutter and set of three stops for lens. When used for instantaneous exposures the shutter is always set.

A Plate-holder for glass plates can be provided with each Pocket Kodak, no extra attachment being required. A rectangular Finder is provided for locating the image with accuracy. The construction is simple and accurate and the lens of fine quality and carefully tested.

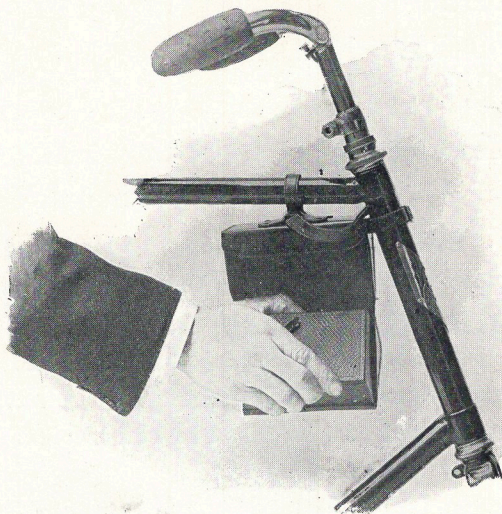
In the quality of the work they will do, Pocket Kodaks equal the best cameras on the market. They make negatives of such perfect quality that enlargements of any size can be made from them.

Covered with fine leather, handsomely finished.

| | |
|---|---------|
| Pocket Kodak, loaded, 12 exposures, - - - - - | \$5 00. |
| Light Proof Film Cartridge, 12 exposures, $1\frac{1}{2} \times 2$ inches, - - - - - | 25. |

THE BICYCLE . . CARRYING CASE.

The Pocket Kodak Bicycle Carrying Case is made of the best black sole leather and will hold, beside the Kodak, three extra spools of film. It attaches to the frame in much the same manner as a tool bag and may be carried suspended from the top bar of the machine either at the head or at the seat post.



Price of Pocket Kodak Bicycle Case, - - - - - \$1 00.

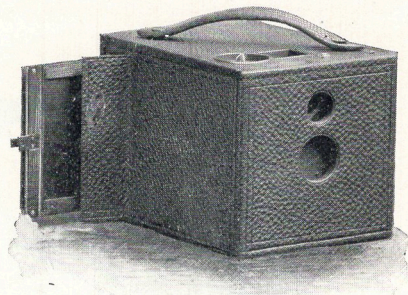


THE POCKET KODAK BICYCLE CASE.

NO. 2 BULLET.

(FOR FILMS OR PLATES.)

For square pictures, $3\frac{1}{2}$ x $3\frac{1}{2}$ inches; capacity, 18 exposures without reloading; size of camera, $4\frac{1}{2}$ x $4\frac{1}{2}$ x 6 inches; weight, 20 ounces; length of focus of lens, $4\frac{1}{4}$ inches.



SHOWING NO. 2 BULLET ADAPTED TO PLATES.

The Improved Bullet uses either Film Cartridges or glass plates (with plates the picture is $3\frac{1}{4}$ x $3\frac{1}{2}$ inches), and can be "loaded in daylight." It is fitted with a carefully tested achromatic lens of superior quality, set of three stops, square finder, socket for tripod screw, and has our improved rotary shutter for snap-shots or time exposures. When used for instantaneous exposures the shutter is always set.

Either as a film or as a plate camera the No. 2 Bullet is a wonderfully compact and convenient instrument. No "adapter" is necessary when used with plates, no extras being required except, of course, the plate holders themselves.

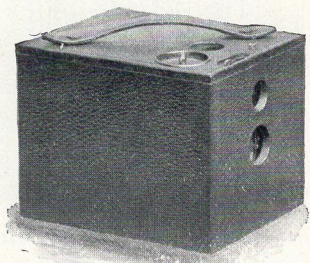
The slides for changing stops and for time exposures are alongside of the exposure lever and always show by their position what stop is before the lens, and whether the shutter is set for time or instantaneous exposure. There is, therefore, no danger of committing the too common error of making snap shots with the smallest stop in the lens, or setting the shutter for a time exposure when a snap shot is intended, or vice versa.

Handsomely finished and covered with leather.

| | | | |
|--|---|---|---------|
| No. 2 Bullet, fitted with achromatic lens, (not loaded), | - | - | \$10 00 |
| Single plate holders ($3\frac{1}{4} \times 3\frac{1}{2}$ inches), each, | - | - | 60 |
| Light-proof Film Cartridge, 12 exposures, $3\frac{1}{2} \times 3\frac{1}{2}$, | - | - | 60 |
| Light-proof Film Cartridge, 18 exposures, $3\frac{1}{2} \times 3\frac{1}{2}$, | - | - | 90 |
| Glass Plates ($3\frac{1}{4} \times 3\frac{1}{2}$ inches), per doz., | - | - | 45 |

NO. 2 BULLS-EYE.

For square pictures, $3\frac{1}{2} \times 3\frac{1}{2}$ inches; capacity, 18 exposures without reloading; size of camera, $4\frac{1}{2} \times 4\frac{1}{2} \times 5\frac{3}{4}$ inches; weight 18 ounces; length of focus of lens, $4\frac{1}{4}$ inches.



This camera is built on the "Cartridge" system, and can be loaded in daylight. Fitted with carefully tested achromatic lens of superior quality, set of three stops, view finder, socket for tripod screw, and improved rotary shutter for snap-shots or time exposures. When used for instantaneous exposures the shutter is always set.

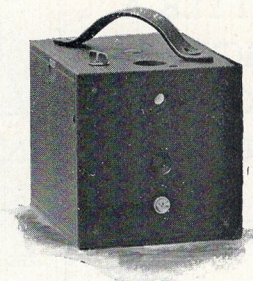
As in the Pocket Kodak and all of the Bullet and Bulls-Eye cameras, the slides for changing stops and for time exposures are alongside of the exposure lever and always show by their position what stop is before the lens, and whether the shutter is set for time or instantaneous exposures.

Handsomely finished and covered with leather.

| | | | | | | | |
|--|---|---|---|---|---|---|--------|
| No. 2 Bulls-Eye, not loaded, | - | - | - | - | - | - | \$8 00 |
| Light-proof Film Cartridge, 12 exposures, $3\frac{1}{2} \times 3\frac{1}{2}$, | - | - | - | - | - | - | 60 |

NO. 2
FALCON.

For square pictures $3\frac{1}{2} \times 3\frac{1}{2}$ inches; capacity 18 exposures without reloading; size of camera, $4\frac{1}{2} \times 4\frac{1}{2} \times 5\frac{3}{4}$ inches; weight, 19 ounces; length of focus of lens, $4\frac{1}{2}$ inches.



This camera is built on the cartridge system and can be loaded in daylight. Fitted with carefully tested achromatic lens, set of three stops, view finder, socket for tripod screw and safety shutter.

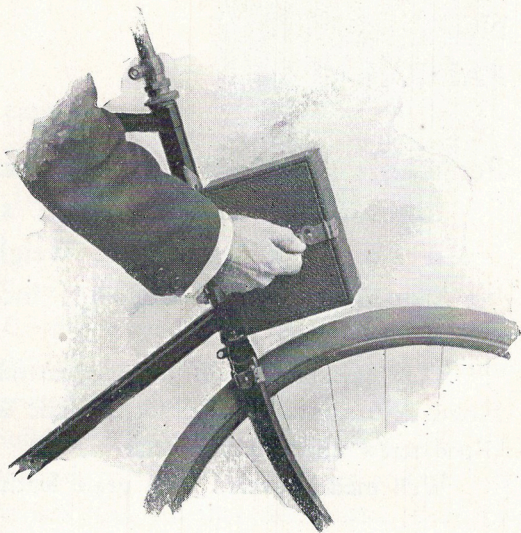
Well made, covered with grain leather and handsomely finished.

| | | | | | | |
|--|---|---|---|---|---|--------|
| No. 2 Falcon Camera, not loaded, | - | - | - | - | - | \$5 00 |
| Light-proof Film Cartridge, 12 exposures, $3\frac{1}{2} \times 3\frac{1}{2}$, | - | - | - | - | - | 60 |

STYLE A
BICYCLE CASE
FOR No. 2 BULLETS,
BULLS-EYES AND FALCONS.

The style A case is strongly made of wood, covered with fine grain leather and lined with cloth and is fitted with springs on the inside which take up the vibration of the wheel and prevent injury to the camera. By means of two simple thumb screws it clamps securely to the head of the bicycle, and there being no play at points of contact with the machine it will not wear the enamel. It can be attached to the wheel so as to open either at the side or at the top, the door fastening with a strong catch.

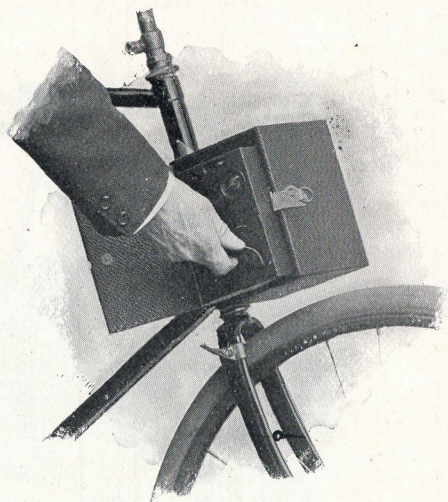
Outside measurements $5\frac{3}{8}$ x $5\frac{1}{2}$ x $6\frac{7}{8}$ inches.



UNFASTENING THE CATCH.

The door latch can be opened with one hand yet it cannot jar open and will not rattle.

By means of a set of adjustable washers (extra) the case may be held far enough in front of the bicycle head to allow for the free passage of the brake rod. It may also be provided (extra) with a lamp bracket attachment. A set of washers are furnished with each case and by their use the clamps will firmly grip any tubing from $\frac{7}{8}$ inch to $1\frac{1}{4}$ inches both inclusive. No wrench, screw driver or other tools are necessary in making the attachment.



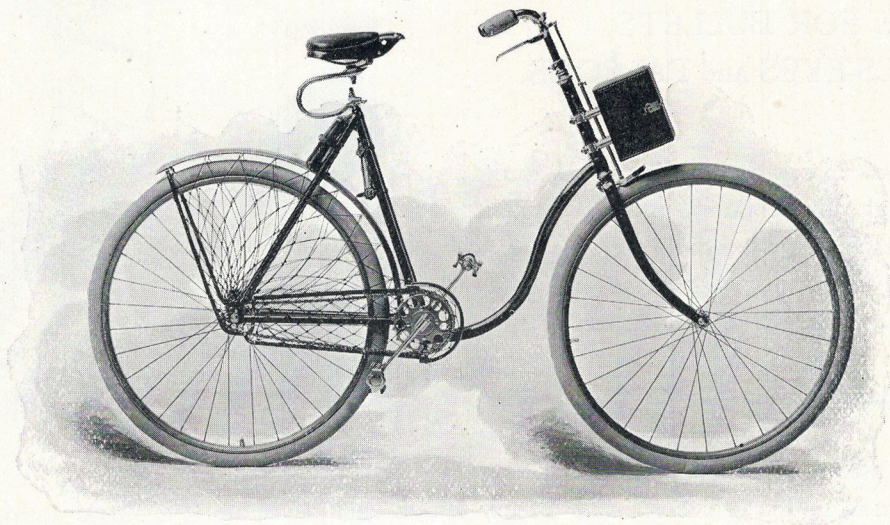
REMOVING THE CAMERA FROM CASE.

| | | | |
|---|---|---|--------|
| *No. 2 Bullet, Bulls-Eye and Falcon Bicycle Carrying Case, Style A, | - | - | \$2 00 |
| Washers for Holding Case in Front of Brake Rod, | - | - | 50 |
| Detachable Lamp Bracket, (see page 26,) | - | - | 25 |

*In ordering specify whether for Bullet, Bulls-Eye or Falcon.



STYLE A BICYCLE CASE.
FOR BULLETS, BULLS-EYES AND FALCONS.



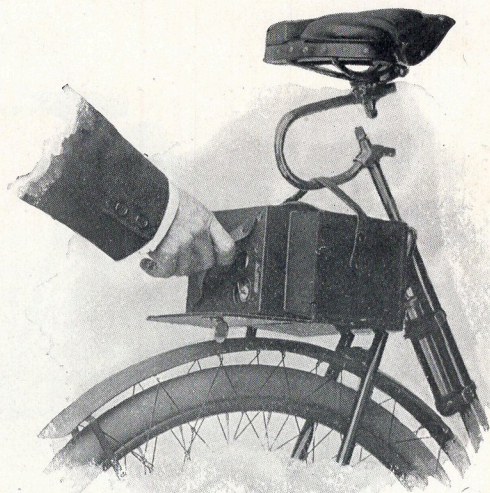
STYLE A BICYCLE CASE.

SHOWING CASE HELD IN FRONT OF BRAKE ROD BY MEANS OF WASHERS.
FOR BULLETS, BULLS-EYES AND FALCONS.

STYLE B CASE FOR BULLETS, BULLS-EYES and FALCONS.

This case is designed to attach to the rear forks immediately under the saddle and is especially adapted to use on a lady's wheel, or on any wheel having mudguards. It is provided with three straps, two of which attach to the rear forks, the third passing through the saddle spring proper or through the U spring where one is used as shown in the illustration.

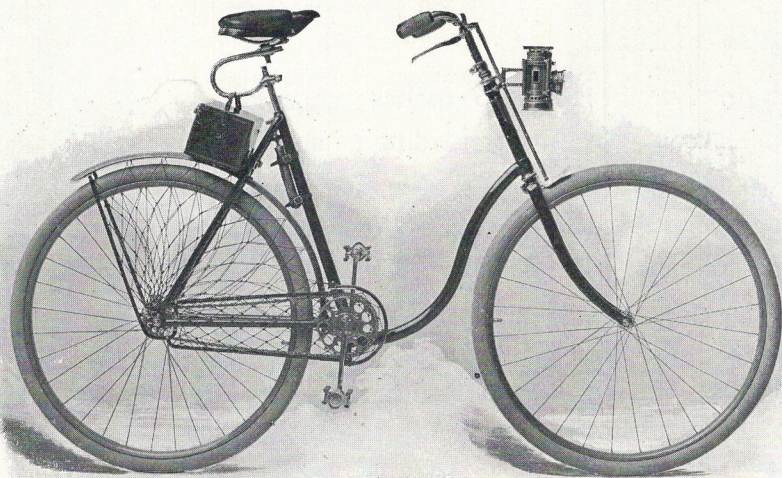
It is made of the best black sole leather and is easily accessible, a single strong clasp securing the flap in position. It makes a safe and convenient carrier for the camera.



REMOVING THE CAMERA.

Price, No. 2 Bullet, Bulls-Eye and Falcon Bicycle Carrying Case, Style B, \$1.50

NOTE—This case is impracticable for very short riders as it requires a space of 6 to 7 inches between the mudguard and the saddle spring.

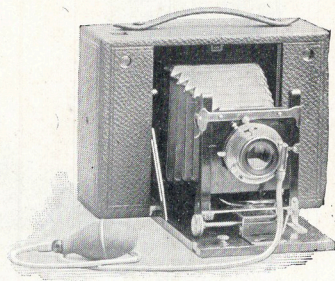


STYLE B BICYCLE CASE.
FOR BULLETS, BULLS-EYES AND FALCONS.

THE NO. 4 CARTRIDGE KODAK.

(FOR FILM AND PLATES.)

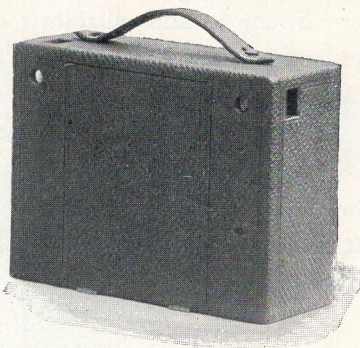
For rectangular pictures 4 x 5 inches; capacity, 12 exposures without reloading; size of camera, $3\frac{1}{8} \times 6\frac{3}{8} \times 8\frac{1}{4}$, = 167 cubic inches; weight, loaded, 2 lbs., 12 ozs; length of focus of lens, $6\frac{1}{2}$ inches.



CARTRIDGE KODAK OPEN.

In the Cartridge Kodak we have adapted the "Film Cartridge System" to a Folding Kodak of the finest quality and greatest capabilities. It is hardly more than half the thickness of other cameras which are adapted to both film and plates and is the only folding camera having the daylight loading feature. We never place a camera upon the market until we have thoroughly tested its actual working qualities under all conditions and the finished product is always an improvement over the first model, but in our years of experience in camera making no instrument which we have introduced has been so carefully planned, so severely tested, or has been the subject of so much thought and experiment as the Cartridge Kodak. The result is an instrument which is the embodiment of photographic perfection.

The Cartridge Kodak uses either our daylight loading Film Cartridges or glass plates, is fitted with carefully tested rapid rectilinear lenses and our own pneumatic release shutter fitted with iris diaphragm stops. This shutter has three speeds for instantaneous exposures; it makes short time exposures by one pressure of the bulb, the shutter closing when the bulb is released; and makes longer time exposures by pressing the bulb once to open the shutter and again to close it. It may be operated by the finger trigger instead of the bulb when so desired.



CARTRIDGE KODAK CLOSED.

The Cartridge Kodak is provided with a rising, sliding and falling front, two view finders, one for vertical and one for horizontal exposures, two sockets for tripod screws and is equally perfect as a hand or as a tripod camera. It has an index for focusing and when used with plates may be focused on the ground glass if desired.

When used with film there are no projecting parts, no attachments to become lost, no extras to be mislaid. The plate adapter is simple and compact and can be put in place or removed in five seconds.

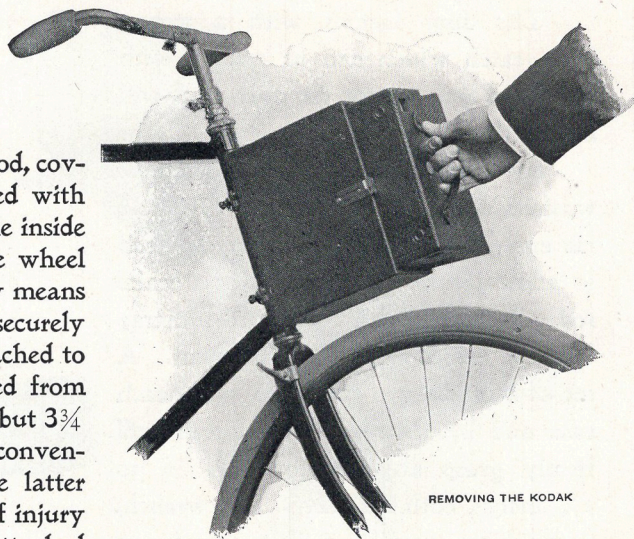
Strength and reliability have not been sacrificed to mere lightness, nor efficiency to compactness. The finish is rich and beautiful. When closed for carrying it is inconspicuous, there being no metal parts in sight, even the key, which is in the bottom of the camera, being recessed and entirely hidden from view. When open for use it exposes to view a bed and front board of highly polished mahogany with buffed brass fittings set off in brilliant contrast by the highly polished nickel shutter. In short, it has in a superlative degree, that rich and dainty finish which characterizes all our goods.

| | |
|--|---------|
| No. 4 Cartridge Kodak with Rapid Rectilinear lens and pneumatic shutter, | \$25 00 |
| Light Proof Film Cartridge, 12 exposures, 5 x 4 inches, | - - 90 |

CARTRIDGE KODAK BICYCLE CASE.

This case is strongly made of wood, covered with fine grain leather and lined with cloth and is fitted with springs on the inside which take up the vibration of the wheel and prevent injury to the camera. By means of two simple thumb screws which securely grasp the tubing the case may be attached to the head of the machine or suspended from the top bar, inside the frame. Being but $3\frac{3}{4}$ inches in thickness, it in no wise inconveniences the rider when carried in the latter position and stands but little chance of injury in case of a fall. The clamps can be attached to any side of the case (except, of course, the door) and in using it on the bicycle head the door may be at the top, at either side or directly in front, in which latter position the case presents almost no "wind resistance." There being no play at the points of contact with the machine, it will not wear the enamel.

Outside measurements, $3\frac{3}{4}$ x $7\frac{1}{4}$ x $8\frac{7}{8}$ inches.



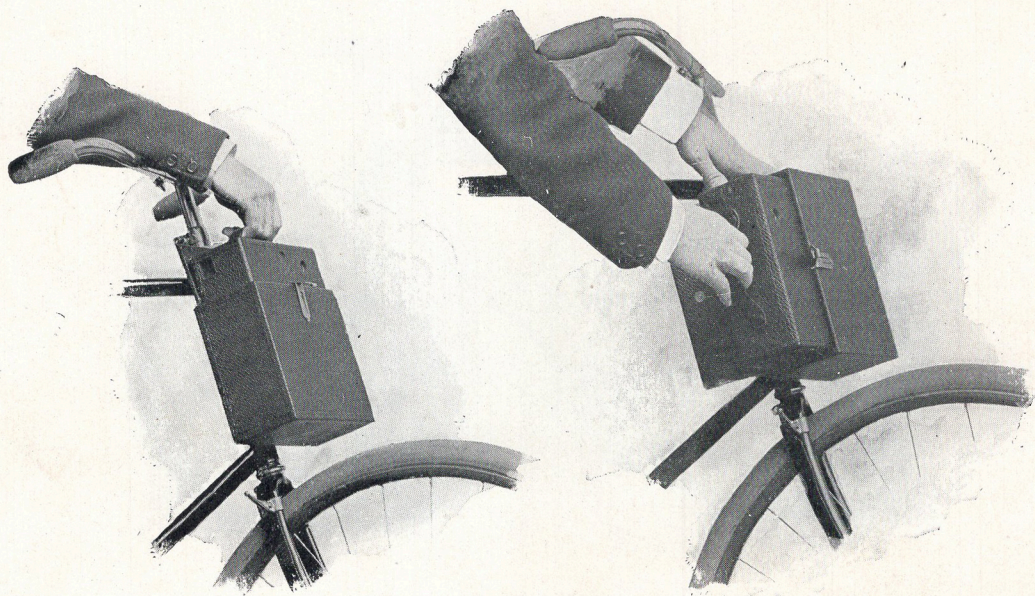
REMOVING THE KODAK

The door fastens with a strong brass catch which can be opened with one hand yet cannot jar open and will not rattle.

By means of a set of adjustable washers (extra) the case may be held far enough in front of the bicycle head to allow for the free passage of a brake rod. It may also be provided (extra) with a lamp bracket attachment. A set of washers are furnished with each case and by their use the clamps will firmly grasp any tubing from $\frac{7}{8}$ to $1\frac{1}{4}$ inches, both inclusive. No wrench, screw driver or other tools are necessary in making the attachment.



| | | | | |
|---|---|---|---|--------|
| No. 4 Cartridge Kodak Bicycle Case, | - | - | - | \$2 50 |
| Washers for holding Case in front of brake rod, | - | - | - | 50 |
| Detachable Lamp Bracket, | - | - | - | 25 |



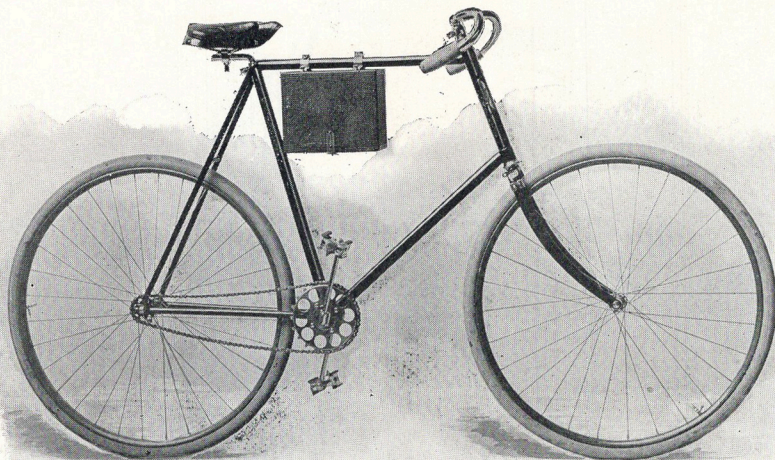
REMOVING THE KODAK.

TWO POSITIONS OF CASE.



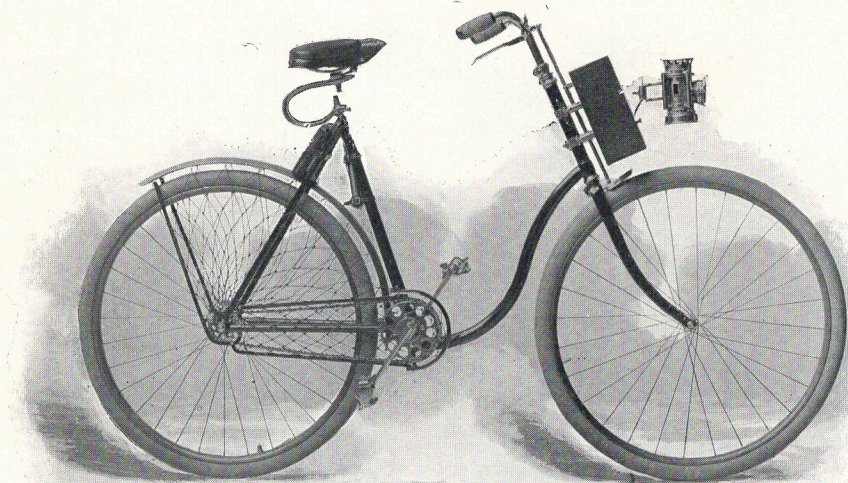
No. 4 CARTRIDGE KODAK BICYCLE CASE.

SHOWING CASE ADJUSTED TO OPEN AT TOP.



NO. 4 CARTRIDGE KODAK BICYCLE CASE.

SHOWING CASE ATTACHED TO TOP BAR.

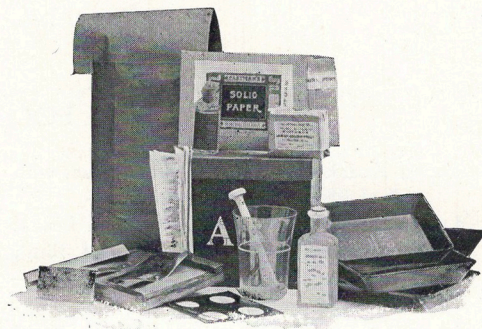


NO. 4 CARTRIDGE KODAK BICYCLE CASE.

SHOWING CASE HELD IN FRONT OF BRAKE ROD BY MEANS OF WASHERS, WITH LAMP ATTACHMENT.

EASTMAN'S A B C DEVELOPING AND PRINTING OUTFIT

Includes every requisite for Developing, Printing and Finishing 24 Pictures 4 x 5, or 96 Pocket Kodak Pictures, and can be used with any of the foregoing cameras.



IT CONTAINS:

| | | | |
|--|--------|--|--------|
| 1 Eastman Candle Lamp, - - - - | \$0 25 | ½ oz. Bromide Potassium, - - - - | \$0 10 |
| 1 4 x 5 Printing Frame, - - - - | 25 | 2 doz. 4 x 5 Solio Paper, - - - - | 50 |
| 1 " Glass for do., - - - - | 05 | 2 ozs. Solio Toning Solution, - - - - | 15 |
| 1 Glass Beaker, - - - - | 12 | 1 oz. Glycerine, - - - - | 05 |
| 1 Stirring Rod, - - - - | 05 | Mask for making Pocket Kodak Medallions, - - - - | — |
| 4 4¼ x 5½ Developing Trays, - - - - | 40 | Instruction Book, - - - - | — |
| ½ doz. pairs Developing Powders, - - - - | 25 | | |
| ½ lb. Hyposulphite Soda, - - - - | 07 | | \$2 24 |

Price Complete Neatly Packed, \$1.50.

NOTE :—This outfit cannot be shipped by mail.

PRICE LIST.

POCKET KODAKS.

| | | | |
|--|--------|---|--------|
| Pocket Kodak covered with fine leather, with roll of film for 12 exposures, - - - | \$5 00 | Printing and mounting only, per dozen, | \$0 25 |
| Leather Hand Carrying Case (to hold Pocket Kodak and three extra spools of film), Price, case only, - - - - - | 75 | Postage, - - - - - | 05 |
| Do., do., russet leather, - - - - - | 1 00 | NOTE—When there are any failures we furnish enough duplicates from the good negatives to make up the full number. | |
| Leather Bicycle Carrying Case (to hold Pocket Kodak and three extra spools of film), Price, case only, - - - - - | 1 00 | Mounts, white embossed, per dozen, - - - | \$ 10 |
| Box of film, 4 Cartridges, 12 exposures each, 1 00 | | Enlarging Camera, including lens, - - - | 10 00 |
| Film Cartridge, 12 exposures, - - - - - | 25 | Tripod for Enlarging Camera, - - - - - | 2 00 |
| Single glass plate holders, - - - - - | 25 | Hard Rubber Trays, 7 x 9, each, - - - | 72 |
| Thin crystal glass dry plates, 1½ x 2 inches, per doz., - - - - - | 20 | Eastman's Enameled or Platino Bromide paper, per doz., 6½ x 8½, - - - - - | 1 10 |
| Developing one roll of film (12 exposures) and furnishing one Solio Print from each negative, mounted and burnished (12 finished photographs), - - - - - | 50 | Staff Tripod, fitted for Pocket Kodak, - - - | 1 50 |
| Postage, - - - - - | 05 | Wire Easels for Pocket Kodak pictures, per box of 15, - - - - - | 25 |
| Developing only; roll 12 exposures, - - - | 25 | Pocket Case, to hold 50 unmounted P. K. Prints, - - - - - | 25 |
| Postage, - - - - - | 02 | Pocket Case, to hold 100 unmounted P. K. Prints, - - - - - | 50 |

Amounts less than One Dollar can be sent in postage stamps.

PRICE LIST—Continued.

NO. 2 BULLET, NO. 2 BULLS-EYE AND NO. 2 FALCON CAMERAS.

| | | | |
|--|---------|---|--------|
| No. 2 Bullet, for $3\frac{1}{2}$ x $3\frac{1}{2}$ pictures, for film or plates (not loaded), - - - - | \$10 00 | Washers for holding case in front of brake rod, - - - - - | \$0 50 |
| No. 2 Bulls-Eye, for $3\frac{1}{2}$ x $3\frac{1}{2}$ pictures (not loaded), - - - - - | 8 00 | Detachable Lamp Bracket, - - - - | 25 |
| No. 2 Falcon, for $3\frac{1}{2}$ x $3\frac{1}{2}$ pictures (not loaded), - - - - - | 5 00 | Bicycle Carrying Case for the No. 2 Bullet, Bulls-Eye or Falcon, Style B, - - - | 1 50 |
| Film Cartridges, 12 exposures $3\frac{1}{2}$ x $3\frac{1}{2}$, - | 60 | Black Sole Leather Hand Carrying Case for No. 2 Bullet, Bulls-Eye or Falcon, - | 1 25 |
| Film Cartridges, 18 exposures $3\frac{1}{2}$ x $3\frac{1}{2}$, - | 90 | Ladies' Buff Leather Hand Carrying Case, with name plate, for No. 2 Bullet, Bulls-Eye, or Falcon, - - - - - | 2 00 |
| Developing, Printing and Mounting, 12 exposures $3\frac{1}{2}$ x $3\frac{1}{2}$, - - - - - | 1 50 | Single Glass Plate Holders, $3\frac{1}{4}$ x $3\frac{1}{2}$ inches, for No. 2 Bullet, - - - - - | 60 |
| Developing, Printing and Mounting, 18 exposures $3\frac{1}{2}$ x $3\frac{1}{2}$, - - - - - | 2 25 | Glass Dry Plates, $3\frac{1}{4}$ x $3\frac{1}{2}$, per dozen, - | 45 |
| Developing only, each $3\frac{1}{2}$ x $3\frac{1}{2}$, - - | 06 | Leather Carrying Case for 6 plate holders for No. 2 Bullet, - - - - - | 1 00 |
| Printing and Mounting only, each $3\frac{1}{2}$ x $3\frac{1}{2}$, - | 08 | Leather Carrying Case for 12 plate holders for No. 2 Bullet, - - - - - | 1 50 |
| On orders for less than one dozen prints 25c. extra will be charged. | | | |
| Bicycle Carrying Case for No. 2 Bullet, Bulls-Eye or Falcon, Style A, - - - | 2 00 | | |

PRICE LIST—Continued.

NO. 4 CARTRIDGE KODAK.

| | | | |
|--|---------|--|-------|
| No. 4 Cartridge Kodak for 5 x 4 pictures with rapid rectilinear lens and pneumatic shutter (not loaded), - - - - | \$25 00 | Adjustable lamp bracket, - - - - | \$ 25 |
| Film Cartridge, 12 exposures 5 x 4, - - | 90 | Glass Plate Outfit, including adapter, ground glass, three double plate holders and black sole leather carrying case for three double plate holders, - - - - | 6 50 |
| Black sole leather carrying case with shoulder strap, - - - - | 2 00 | Glass Plate Adapter with ground glass, - | 2 50 |
| Developing, printing and mounting, 12 exposures, - - - - | 1 80 | Double Glass Plate Holders, 4 x 5, each, - | 1 00 |
| Developing only, each, - - - - | 08 | Black Sole Leather Carrying Case to hold three double plate holders and focusing glass, - | 1 00 |
| Printing and mounting only, each, - - | 10 | Do. to hold six double plate holders and focusing glass, - - - - | 1 50 |
| Bicycle Carrying Case for No. 4 Cartridge Kodak, - - - - | 2 50 | Eastman's Extra Rapid Dry Plates, per dozen, 4 x 5, - - - - | 65 |
| Washers to hold case in front of brake rod, per set, - - - - | 50 | Lens Cap, - - - - | 25 |

PRICE LIST—Continued.

SUNDRIES.

| | | | |
|---|--------|--|--------|
| Mounts for $3\frac{1}{2} \times 3\frac{1}{2}$ prints, white embossed, per dozen, - - - - - | \$0 14 | No. 1 Kodak Tripod, folds into two sections 16 inches long, and can be readily carried on the wheel, - - - - - | \$5 00 |
| Do., per 100, - - - - - | 1 10 | Leather Carrying Case for No. 1 Kodak Tri- pod (can be easily strapped to handle bars), | 3 00 |
| Mounts for No. 4 Cartridge Kodak prints, white embossed, per dozen, - - - - - | 15 | Bulls-Eye Tripod, for cameras 4 x 5 or smaller, folds in two sections, - - - - - | 2 00 |
| Do., per 100, - - - - - | 1 20 | Staff Tripod, suitable for any camera, 4 x 5 or smaller, (if for Pocket Kodak so state on order), - - - - - | 1 50 |
| Eastman's Hydrochinon Developer Powders, per dozen pairs, - - - - - | 50 | Eastman's Film Negative Album, to hold 100 negatives, $3\frac{1}{2} \times 3\frac{1}{2}$, - - - - - | 75 |
| Eastman's Pyro Developer Powders, per dozen pairs, - - - - - | 50 | Do., to hold 100 negatives, 4 x 5, or 400 Pocket Kodak negatives, - - - - - | 1 00 |
| Eastman's Solio Paper, 4 x 5, per dozen, | 25 | | |
| Eastman's Solio Paper, $3\frac{1}{2} \times 3\frac{1}{2}$ per dozen, | 15 | | |
| Eastman's Solio Toning Solution, per 8-ounce bottle, - - - - - | 50 | | |

EASTMAN PHOTOGRAPHIC MATERIALS CO., LTD.,
115-117 OXFORD ST., LONDON.
4 PLACE VENDOME, PARIS,
5 AVENUE DE L'OPERA, PARIS.

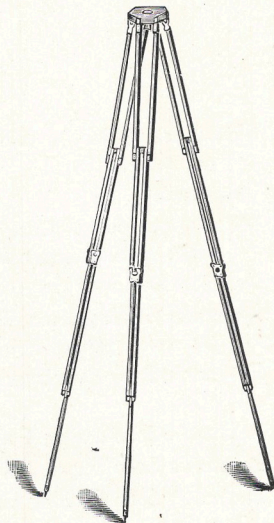
EASTMAN KODAK GESELLSCHAFT, M. B. H.
91 MARKGRAFEN STRASSE, BERLIN.

EASTMAN KODAK CO.,
Rochester, N. Y.

KODAK TRIPODS.

Length, extended, 55½ inches; length, folded, 15⅞ inches; weight, 2 lbs. 3 oz. Especially designed for use with Kodaks.

When put up in the Leather Carrying Case the Kodak Tripod is perfectly adapted to the wheelman's use. Being but 15⅞ inches long it can be readily strapped to the handle bar where it will in no way inconvenience the rider. Perfectly rigid and suitable for any camera up to 8 x 10. Made of the best seasoned cherry with brass fittings.



PRICE OF KODAK TRIPODS.

| | | | | | |
|--|---|---|---|---|--------|
| No. 1 Kodak Tripod with folding lugs, | - | - | - | - | \$5 00 |
| No. 2 Kodak Tripod with solid lugs, | - | - | - | - | 4 00 |
| Leather Carrying Case with pocket for top for No. 1, | - | - | - | - | 3 00 |
| Leather Carrying Case without pocket, | - | - | - | - | 2 00 |

Send for Descriptive Catalogue.

COMPLETE CATALOGUE OF

KODAKS,
BULLETS,
BULLS-EYES AND FALCONS

FREE AT AGENCIES OR BY MAIL.