

GRAFLEX



GRAFLEX and Graphic Cameras Eastman Supplies



1926

Graflex, Graphic, Cirkut and Crown products, formerly manufactured by the Eastman Kodak Company (Folmer & Schwing Department), are now made by

THE FOLMER GRAFLEX CORPORATION
ROCHESTER, NEW YORK

For sale by
EASTMAN KODAK COMPANY
ROCHESTER, NEW YORK



The above illustration is from a Graflex negative made at $1/25$ of a second. The cover illustration is from a Graflex negative made at $1/490$ of a second.



The Graflex

STRIKING pictures of everyday subjects are easy to make with a Graflex. You know when the focus is sharp; you see what the view includes. The lens admits abundant light, the shutter at your will works at slow or extremely high speeds.

With such advantages, the Graflex has long been the professional's favorite hand camera. Naturally enough, such safeguards are valued still more by the amateur.

Proper focus, pleasing composition and ample exposure—the essentials of a good negative—are facilitated by the reflecting mirror, focal plane shutter and fast lens on any Graflex.

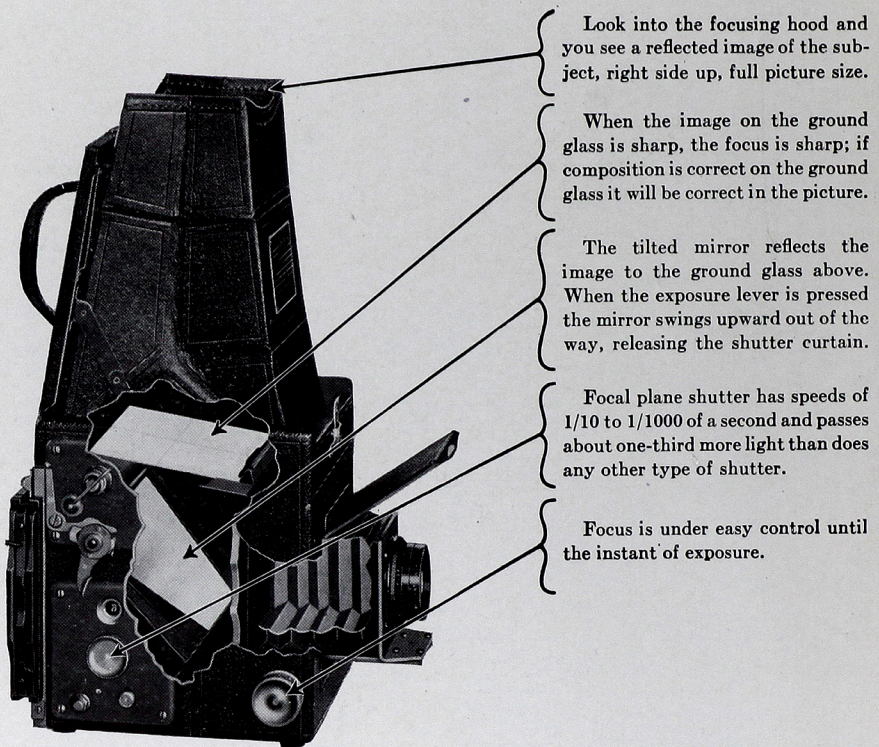
These features are as valuable at 1/10 as at 1/1000; as valuable for quiet portrait studies as for exciting action scenes. Therefore, the Graflex user finds photographic excellence easy to attain. His camera will do all, except wide angle work, that any hand camera can do.

A Right-side-up, Picture-size Image

The reflecting mirror takes the guesswork out of composition and focusing by showing on the ground glass at the base of the viewing hood a right-side-up, picture-size image of the subject, visible until the instant of exposure. Arrangement, lighting and spacing are all seen in advance; action is faithfully followed. Composition becomes a matter of easy control.

Precise focus is also certain. As the lens is racked back and forth, the image reflected on the ground glass tells when the focus is right. Thus the reflecting mirror feature protects the amateur from two of his favorite faults. He *knows* when the focus is sharp, he *sees* what the view includes.

The Graflex focal plane shutter is a long curtain in which are several reinforced rectangular openings of different sizes. During an exposure one of these openings passes close across the film,

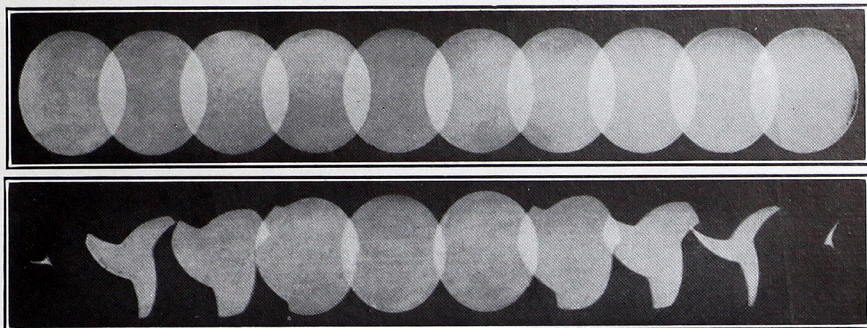


giving uniform illumination throughout. Attached to the camera is a metal plate on which are engraved the exposures obtained by each curtain opening when combined with each curtain tension. The mechanism is simple and positive.

Speeds For All Occasions

Twenty-four instantaneous speeds, 1/10 to 1/1000 of a second, a slow snapshot of about 1/5 and *time* are provided: a range that covers every requirement.

At 1/350 or 1/295, Graflex pictures of lively youngsters, athletes or active animals have an air of animation that can be caught only at high speed. With the shutter set at 1/5 or 1/10, snapshots can be made indoors under good light.



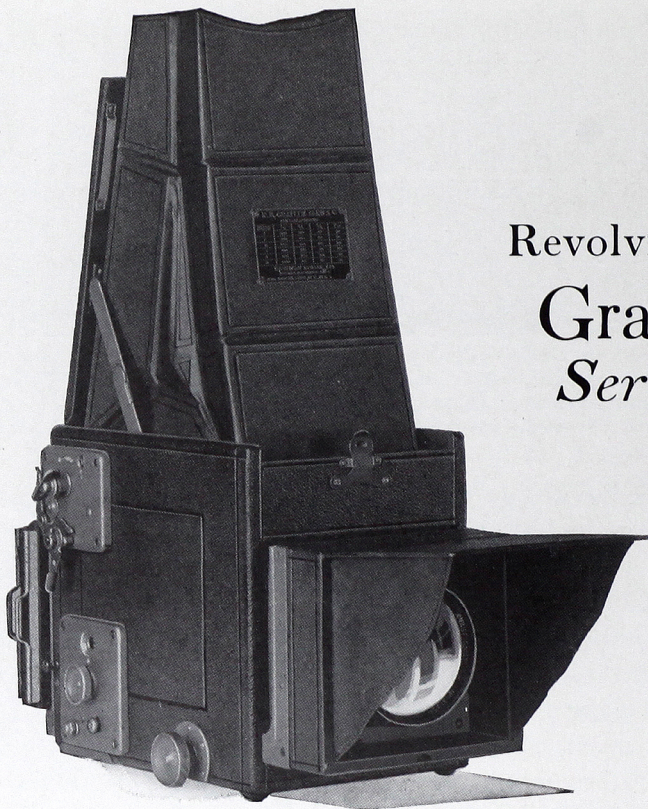
From actual photographs made with identical lenses during exposures of $1/100$ of a second, each flash representing $1/1000$ of a second. The upper strip, made with a Graflex focal plane shutter, shows uniform illumination, whereas the lower strip indicates that the best between-lens shutter is "wide open" during the fifth and sixth flashes only.

As shown in the laboratory photographs above, the Graflex focal plane shutter works at full efficiency throughout the exposure and passes about a third more light than does one of the "between-lens" type. This means that the Graflex can be operated at greater shutter speed without danger of underexposure and that when using Kodak Cut Film *Super Speed* a slow snapshot will often do where another camera would require *time*.

The big, fast anastigmat lens $f.4.5$ or $f.2.5$ permits the focal plane shutter's efficiency to be fully realized. And for sharp definition, all over the negative, the anastigmat takes first rank in the optical world.

Though richly handsome, the Graflex is designed to withstand rough use. Beneath its cover of luxurious Morocco leather is a body of choice mahogany, sturdily joined. Exposed wood parts are ebonized; exposed metal parts are silver-plated brass, oxidized to a dull, matte tone. Each Graflex is built of the best and by the best, throughout.

The Graflex combines the reflecting mirror, focal plane shutter and fast lens in a camera that satisfies the most exacting professional worker. Yet it is so easy to operate, and to understand, that the amateur appreciates its advantages as soon as he gets a Graflex in his hands and sees in the hood a big, right-side-up, image of his subject—a thrill that no other type of camera can offer.



Revolving Back Graflex, *Series C*

THIS new $3\frac{1}{4} \times 4\frac{1}{4}$ camera combines extreme optical speed — $f.2.5$ — with the sturdiness that distinguishes any Graflex.

Its lens is a $6\frac{1}{2}$ -inch Cooke Anastigmat $f.2.5$, the fastest ever offered on a Graflex, fast enough for instantaneous exposures outdoors in all weather and indoors under good light. Newspaper men, pictorialists and advanced amateurs will therefore welcome the Graflex, *Series C*.

Since so fast a lens requires rigid, accurate mounting, the $f.2.5$ anastigmat is "built into" a substantial front. A hinged cover serves, when open, as a shield for sides and top.

Favorite Graflex features are all present on the *Series C*. The reflecting mirror shows when the image is sharp, shows what the

view includes. Focusing and spacing are free from guesswork. The revolving back is another valuable aid.

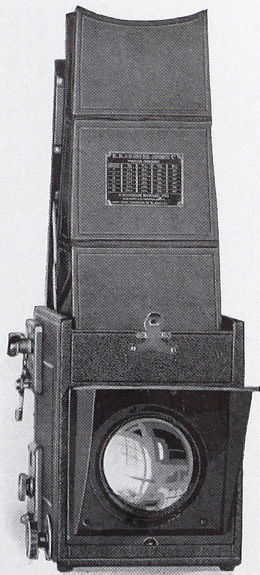
Shutter speeds are 1/10 to 1/1000, a "slow" of about 1/5, and *time*.

Interchangeable attachments permit the use of cut film, plates, film packs and roll film. With Kodak Cut Film *Super Speed* behind the *f.2.5* lens, successful short exposures can be made of many hitherto difficult subjects.

3¼ x 4¼ is a popular Graflex size throughout the world. Bigger prints are obtainable by enlarging.

DETAILS

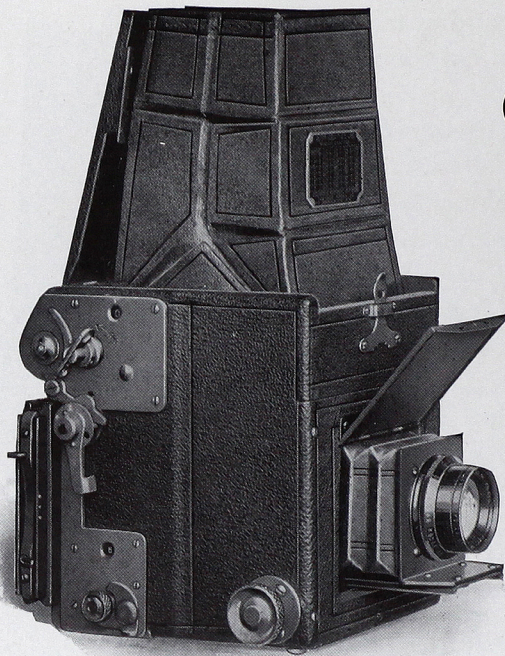
Dimensions, 8½ x 5½ x 7¼ in.; weight, 7¼ lbs.; focal length of lens, 6½ in.; closest working distance, 23 inches.



Cooke Anastigmat *f.2.5* is the fastest lens ever offered on a Graflex.

PRICES

	3¼ x 4¼
REVOLVING BACK GRAFLEX, <i>Series C</i> , with one cut film holder or one plate holder and Cooke Anastigmat Lens <i>f.2.5</i>	\$260.00
Graflex Roll Holder, No. 151	12.50
Graflex Cut Film Holder	2.75
Graflex Cut Film Magazine	14.50
Graflex Plate Magazine	14.50
Graflex Film Pack Adapter	5.50
Graflex Plate Holder	2.75
Ground Glass Focusing Panel to interchange with holder	5.50
Leather Case for camera and roll holder or cut film magazine	11.00
Leather Case for camera and plate magazine	12.50
Kodak Cut Film <i>Regular Speed</i> , doz.65
Kodak Cut Film <i>Super Speed</i> , doz.75
Kodak Film Pack, No. 51890
Eastman Film Cartridge No. 151, 6 exposures45



Graflex, *Series B*

$2\frac{1}{4} \times 3\frac{1}{4}$

IN THIS little camera, recent refinements supplement the renowned reflecting feature, focal plane shutter and fast lens. It carries a Kodak Anastigmat *f*.4.5, permanently set in a rigid metal front, which moves smoothly on a single wide track: the *Series B* improvements.

Like larger Graflexes, this popular model has the reflecting mirror, by which the user *knows* when focus is sharp and *sees* what the view includes. He may go from viewpoint to viewpoint or the subject itself may change. Yet focus remains under instant control. His left thumb waits at the shutter release for the moment when the reflected image pleases his eye.

Like larger Graflexes, this camera has twenty-four snapshot speeds from 1/10 to 1/1000, a slow automatic exposure of 1/5 and any *time* desired.

Picture size is ample for the album; $2\frac{1}{4} \times 3\frac{1}{4}$ film is inexpensive;

splendid enlargements are easy to make from Kodak Anastigmat negatives.

One cut film holder is regular equipment, a plate holder is optional and attachments for using film packs and roll film are listed below.

It's a quick action camera. Hood opens, lens uncovers, at the release of a catch near the handle and a turn of the focusing knob.

Think of all this capacity and convenience in a camera that closes to five-inch height, that weighs only forty ounces.

It's the smallest and lowest priced Graflex, the $2\frac{1}{4} \times 3\frac{1}{4}$ *Series B*.

DETAILS

Dimensions, $5 \times 4\frac{3}{8} \times 5$ in.; weight with lens, $2\frac{1}{2}$ lbs; focal length of lens, $4\frac{3}{8}$ inches; closest working distance, 22 inches.

PRICES

	$2\frac{1}{4} \times 3\frac{1}{4}$
GRAFLEX, <i>Series B</i> , with one cut film holder or one plate holder and Kodak Anastigmat Lens <i>f</i> .4.5, No. 30	\$58.50
Graflex Roll Holder, No. 150	12.50
Graflex Cut Film Holder	2.50
Graflex Cut Film Magazine	13.00
Graflex Plate Magazine	13.00
Graflex Film Pack Adapter	5.50
Graflex Plate Holder	2.50
Ground Glass Focusing Panel, to interchange with holder	4.50
Leather Case for camera and roll holder or cut film magazine	7.25
Leather Case for camera and plate magazine	8.00
Kodak Cut Film <i>Regular Speed</i> , doz.45
Kodak Cut Film <i>Super Speed</i> , doz.50
Kodak Film Pack, No. 52050
Eastman Film Cartridge No. 150, 6 exposures25



Graflex, *Series B*

$3\frac{1}{4} \times 4\frac{1}{4}$

4 x 5

5 x 7

EVERY *Series B* Graflex is fitted with a Kodak Anastigmat lens *f*.4.5 of suitable focal length and covering power. Such unity of design in the factory means harmony in the hands of the user when there's a tricky picture to make.

From sighting the subject to closing the camera is a matter of mere seconds with a *Series B* Graflex. Slip a catch near the handle to open the hood; give the focusing knob a tiny turn to uncover the lens. The reflected image shows big and brilliant, right-side-up, until the shutter is tripped. Freedom from guesswork in the process means absence of error in the picture.

Twenty-four snapshot adjustments from 1/10 to 1/1000, a slow automatic of 1/5, as well as *time*, match every necessity. And speed for speed, the Graflex focal plane shutter admits a third more light

than does any other type of shutter: a guard against underexposure.

One holder for Kodak Cut Film and Kodak Cut Film *Super Speed* or one plate holder is regularly supplied. Attachments are also available for using film packs and rolls, so that anyone can make his negatives on whatever medium he prefers.

The $3\frac{1}{4} \times 4\frac{1}{4}$ and 4×5 are popular Graflex sizes while the 5×7 has its own special virtue: enlargements are seldom necessary.

DETAILS

	$3\frac{1}{4} \times 4\frac{1}{4}$	4×5	5×7
Dimensions	$5\frac{3}{4} \times 5\frac{3}{8} \times 6\frac{1}{4}$	$6\frac{3}{4} \times 6\frac{1}{4} \times 7\frac{1}{4}$	$9\frac{1}{4} \times 8\frac{1}{4} \times 8\frac{3}{4}$
Weight	$4\frac{1}{2}$ lbs.	$6\frac{1}{4}$ lbs.	$9\frac{3}{4}$ lbs.
Focal length of lens.	$5\frac{1}{2}$ in.	$6\frac{3}{8}$ in.	$8\frac{1}{2}$ in.
Closest working distance	$24\frac{3}{4}$ in.	$25\frac{3}{4}$ in.	$27\frac{3}{4}$ in.

PRICES

	$3\frac{1}{4} \times 4\frac{1}{4}$	4×5	5×7
GRAFLEX, <i>Series B</i> , with one cut film holder or one plate holder and Kodak Anastigmat Lens <i>f.4.5</i>	No. 31 \$80.00	No. 32 \$100.00	No. 34 \$160.00
Graflex Roll Holder	No. 151 12.50	No. 153 13.50	No. 154 16.00
Graflex Cut Film Holder	2.75	3.00	4.00
Graflex Cut Film Magazine	14.50	15.50	18.00
Graflex Plate Magazine	14.50	15.50	18.00
Graflex Film Pack Adapter	5.50	6.50	8.50
Graflex Plate Holder	2.75	3.00	4.00
Kodak Pictorial Diffusion Disk	No. 31 5.00	No. 32 5.00	No. 34 6.00
Ground Glass Focusing Panel, to interchange with holder	5.50	6.00	8.00
Leather Case for camera and roll holder or cut film magazine	9.50	10.75	16.00
Leather Case for camera and plate magazine	10.75	12.50	17.00
Kodak Cut Film <i>Regular Speed</i> , doz.65	.90	1.45
Kodak Cut Film <i>Super Speed</i> , doz.75	1.00	1.60
Kodak Film Pack	No. 518 .90	No. 523 1.10	No. 515 1.90
Eastman Film Cartridge, 6 exp.	No. 151 .45	No. 153 .55	No. 154 .95



Revolving Back
Graflex,
Series B

$2\frac{1}{4} \times 3\frac{1}{4}$

IT's a small camera. Yet it boasts every basic Graflex feature, plus a revolving back.

Tall subjects are bigger and better in vertical pictures than in horizontal. This Graflex makes either kind, easily. With a quarter turn of the revolving back, the long way of the film is placed upright. The camera need never be held on its side; the viewing hood is always on top. Composition is simplified when one sees on the ground glass a right-side-up image of the subject. Since the image is picture size, it shows every detail that will show in the negative.

Fast speeds up to 1/1000 are provided for exciting action. In outdoor shade and in well-lighted rooms the 1/10 and 1/5 are useful, indeed, with the Kodak Anastigmat opened to *f*.4.5.

One cut film holder or one plate holder comes with the camera.

Roll film and film packs can also be used in the proper attachments, listed below.

Amateurs are attracted to the Graflex by the certainty of Graflex picture-making. Many of them select this particular model because of its compact completeness. It is sure to satisfy anyone who doesn't require contact prints larger than $2\frac{1}{4} \times 3\frac{1}{4}$ —an economical size for which to buy film.



The Revolving Back works smoothly and is light-tight in any position.

DETAILS

Dimensions, $6 \times 4\frac{1}{2} \times 6\frac{1}{4}$ in.; weight, 4 lbs.; focal length of lens, $5\frac{1}{2}$ in.; closest working distance, $22\frac{1}{2}$ inches.

PRICES

	$2\frac{1}{4} \times 3\frac{1}{4}$
REVOLVING BACK GRAFLEX, <i>Series B</i> , with one cut film holder or one plate holder and Kodak Anastigmat Lens <i>f</i> .4.5, No. 31	\$85.00
Graflex Roll Holder, No. 150	12.50
Graflex Cut Film Holder	2.50
Graflex Cut Film Magazine	13.00
Graflex Plate Magazine	13.00
Graflex Film Pack Adapter	5.50
Graflex Plate Holder	2.50
Kodak Pictorial Diffusion Disk, No. 31	5.00
Ground Glass Focusing Panel to interchange with holder	4.50
Leather Case for camera and roll holder or cut film magazine	7.75
Leather Case for camera and plate magazine	8.75
Kodak Cut Film <i>Regular Speed</i> , doz.45
Kodak Cut Film <i>Super Speed</i> , doz.50
Kodak Film Pack, No. 52050
Eastman Film Cartridge No. 150, 6 exposures25



Revolving Back
Graflex,
Series B

$3\frac{1}{4} \times 4\frac{1}{4}$
 4×5

AMATEURS and professionals alike praise this camera. For it has a revolving back combined with the reflecting mirror, focal plane shutter, fast lens and *Series B* improvements. Both the $3\frac{1}{4} \times 4\frac{1}{4}$ and 4×5 are popular sizes.

A quarter turn of the back places the long dimension of the film in vertical position, permitting large images of tall subjects. The back is light-tight in any position and the holder can stay in place during the turn.

Attractive pictures are no task with a Graflex. As one looks down on the ground glass he knows what the lens is seeing. If the image is pleasing and sharp in the hood, it will be pleasing and sharp in the picture.

Among the twenty-four speeds, the $1/10$ is as useful as the $1/1000$.

And indoors or in the shade the slow exposure of $1/5$, with the lens at $f.4.5$, can often be substituted for *time*, a real advantage in photographing children, pets and other subjects that won't stand still for long.

Kodak Anastigmat $f.4.5$ is a fast lens, and more. For sharpness of definition it is unexcelled; the life that is in its negatives remains in its enlargements.

One cut film holder or one plate holder comes with the camera; roll film and film packs can be used in auxiliary attachments.

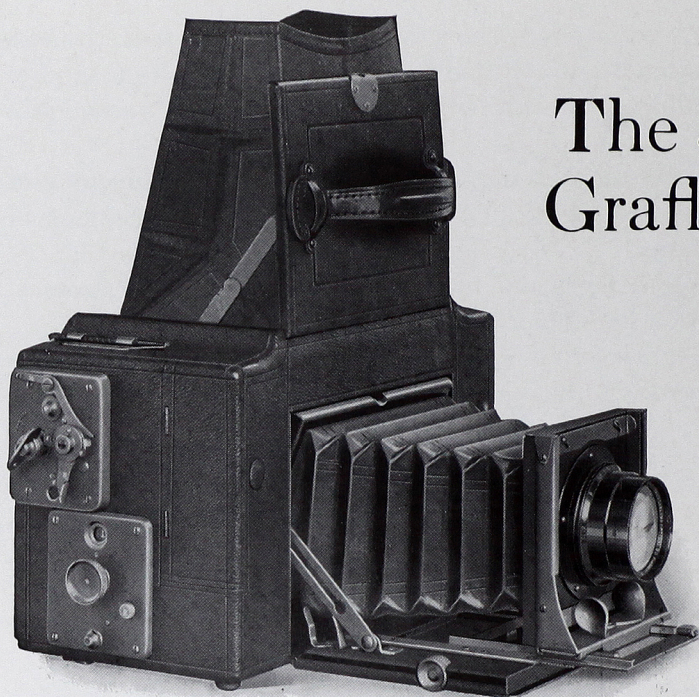
Horizontal composition is easy with any Graflex; vertical also is easy with a revolving back model.

DETAILS

	$3\frac{1}{4} \times 4\frac{1}{4}$	4×5
Dimensions	$6\frac{3}{4} \times 5\frac{1}{2} \times 6\frac{7}{8}$	$8\frac{3}{8} \times 6\frac{3}{8} \times 7\frac{7}{8}$
Weight	$5\frac{1}{2}$ lbs.	$7\frac{3}{4}$ lbs.
Focal length of lens.	$6\frac{3}{8}$ in.	$7\frac{1}{2}$ in.
Closest working distance	24 in.	$27\frac{1}{2}$ in.

PRICES

	$3\frac{1}{4} \times 4\frac{1}{4}$	4×5
REVOLVING BACK GRAFLEX, <i>Series B</i> , with one cut film holder or one plate holder and Kodak Anastigmat Lens $f.4.5$	No. 32 \$105.00	No. 33 \$120.00
Graflex Roll Holder	No. 151 12.50	No. 153 13.50
Graflex Cut Film Holder	2.75	3.00
Graflex Cut Film Magazine	14.50	15.50
Graflex Plate Magazine	14.50	15.50
Graflex Film Pack Adapter	5.50	6.50
Graflex Plate Holder	2.75	3.00
Kodak Pictorial Diffusion Disk	No. 32 5.00	No. 33 5.00
Leather Case for camera and roll holder or cut film magazine	11.00	12.75
Leather Case for camera and plate magazine	12.50	14.50
Ground Glass Focusing Panel to interchange with holder	5.50	6.00
Kodak Cut Film <i>Regular Speed</i> , doz.65	.90
Kodak Cut Film <i>Super Speed</i> , doz.75	1.00
Kodak Film Pack	No. 518 .90	No. 523 1.10
Eastman Film Cartridge, 6 exposures	No. 151 .45	No. 153 .55



The 3A Graflex

Autographic

THIS is the only Graflex embodying the Autographic feature and using regular Kodak roll film. Another popular point is that it makes $3\frac{1}{4} \times 5\frac{1}{2}$ (postcard) pictures.

With the Autographic device, date and title or other important facts can be written on the margin of the film at the time of exposure. Such identification, permanent on the negative, is always useful and often invaluable. Ages of children, engineering data, names of places and people are examples of notes worth recording for later reference.

Kodak Film offers these advantages: it loads in daylight, develops in daylight with a Kodak Film Tank and is easily obtainable all over the world.

At the ends of the 3A Graflex, room is provided for four ten-exposure rolls, which, added to one roll loaded for use, gives the

camera a self-contained capacity of fifty pictures. Travelers and sportsmen speak well of this convenience.

Coupled with these advantages, the 3A Graflex has the twenty-four speed (1/10 to 1/1000) focal plane shutter, with a slow exposure of 1/5 that is useful in dull light, and *time*. The reflecting mirror is present, also, and the lens is the Kodak Anastigmat f.4.5.

The 3A, like other Graflexes, is richly finished. The leather covering is Morocco; the metal parts are oxidized silver plate.

DETAILS

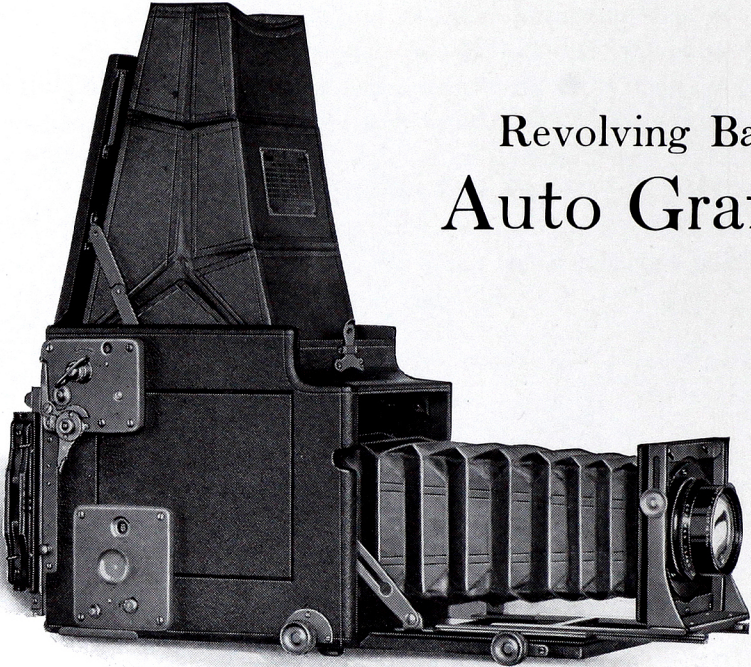
Dimensions, $6\frac{3}{8}$ x 5 x 10 in.; Bellows capacity, 10 in.; Weight, 8 lbs.; Focal length of lens, $7\frac{1}{2}$ inches.

PRICES

3A *AUTOGRAPHIC GRAFLEX with Kodak Anastigmat	$3\frac{1}{4}$ x $5\frac{1}{2}$
Lens f.4.5, No. 33	\$140.00
Kodak Pictorial Diffusion Disk, No. 33	5.00
Leather Case	11.00
Extra Lens Board75
Autographic Film Cartridge, 10 exposures, No. A12290
Autographic Film Cartridge, 6 exposures, No. A12255

*"Autographic" is a registered and common law trademark of the Eastman Kodak Company.

Revolving Back Auto Graflex



AMBITIOUS photographers select this camera, with good reason. It is the most versatile member of the versatile Graflex family.

Its bellows length permits close-ups of actual size—essential in scientific work or nature study and valuable in less specialized fields. Generous bellows draw also allows the use of a long focus anastigmat or of a convertible lens's single element. This means big images of far away subjects. Between these extremes lies a tremendous variety of photographic tasks which this camera easily masters.

On a camera that makes big images, the revolving back is doubly important. The rising front reduces foreground and saves the waste of trimming.

The image can be measured, or studied with a magnifier, on the ground glass focusing panel which is supplied to fit the back.

As on other Graflexes, the reflecting mirror is always an aid; the focal plane shutter has twenty-four speeds—1/10 to 1/1000—a slow exposure of 1/5 and *time*. One cut film holder or one plate holder is regular equipment; roll film or film packs can be used in attachments.

In both sizes, 3¼ x 4¼ and 4 x 5, the Revolving Back Graflex is a widely useful camera; and widely used.

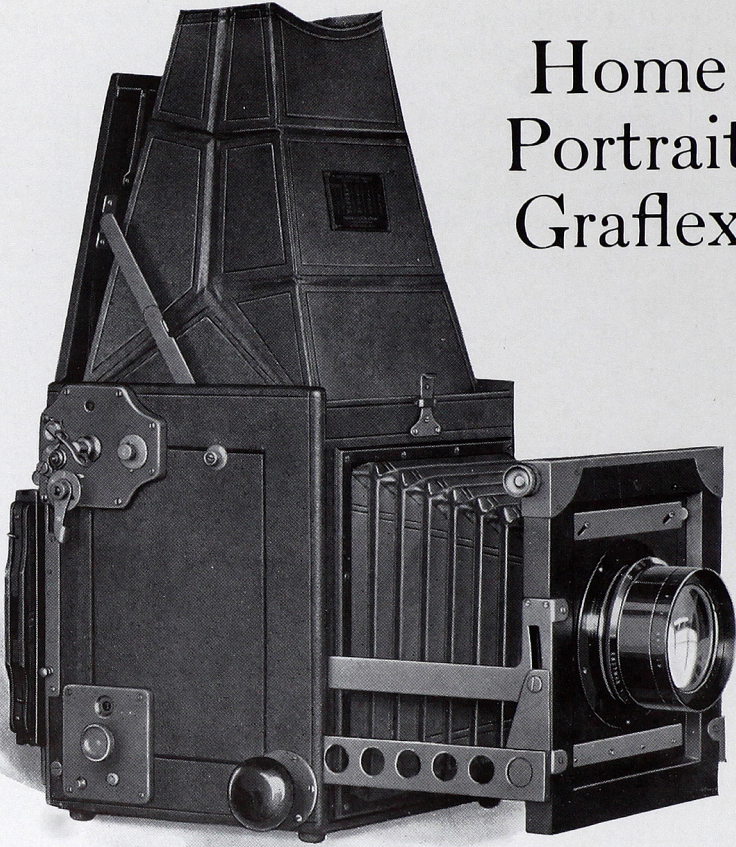
DETAILS

	3¼ x 4¼	4 x 5
Dimensions	8½ x 5½ x 7	10 x 6¼ x 8
Bellows capacity	15½ in.	18½ in.
Weight	5¾ lbs.	7 lbs.
Size of lens board	3¼ x 3¼ in.	3¾ x 3¾ in.
Minimum focus of lenses accommodated	7½ in.	9 in.
Focal length of lenses listed:		
Kodak Anastigmat <i>f</i> .4.5	No. 33 7½ in.	No. 35 10 in.
B. & L. Protar, Series VIIa, <i>f</i> .6.3, complete	No. 10 7⅞ in.	No. 13 9¼ in.
Either element singly	No. 10 13¾ in.	No. 13 16⅜ in.

PRICES

	3¼ x 4¼	4 x 5
REVOLVING BACK AUTO GRAFLEX, without lens, including focusing panel and one cut film holder or one plate holder	\$108.00	\$124.00
With Kodak Anastigmat Lens <i>f</i> .4.5	No. 33 158.00	No. 35 232.00
With B. & L. Protar Lens, Series VIIa, <i>f</i> .6.3	No. 10 203.00	No. 13 249.00
Graflex Roll Holder	No. 151 12.50	No. 153 13.50
Graflex Cut Film Holder	2.75	3.00
Graflex Cut Film Magazine	14.50	15.50
Graflex Plate Magazine	14.50	15.50
Graflex Film Pack Adapter	5.50	6.50
Graflex Plate Holder	2.75	3.00
Kodak Pictorial Diffusion Disk	No. 33 5.00	
Leather Case for camera and roll holder or cut film magazine	11.00	13.50
Leather Case for camera and plate magazine	11.75	14.75
Extra Lens Board75	.90
Kodak Cut Film <i>Regular Speed</i> , doz.65	.90
Kodak Cut Film <i>Super Speed</i> , doz.75	1.00
Kodak Film Pack	No. 518 .90	No. 523 1.10
Eastman Film Cartridge, 6 exposure	No. 151 .45	No. 153 .55

Home Portrait Graflex



THE home portrait photographer aims to catch the subject in a natural moment. His success often depends on whether his camera can quickly meet the requirements of that moment. This the Home Portrait Graflex will do. It has a swinging front and revolving back supplementing the reflecting mirror and focal plane shutter.

As the photographer changes focus and raises, lowers or tilts the lens, he studies the 5 x 7 image in the hood. He trips the shutter at the very instant when the reflected image shows that lighting, composition and expression are right. Such simplicity and certainty are especially valuable when working with children.

Automatic shutter speeds are provided from 1/500 down to one second; the last, with *Super Speed* film, is a frequent substitute for *time*.

Good perspective is promoted by using the Kodak Anastigmat lens *f*.4.5, of 12-inch focal length. It makes big images at good distance. Bellows capacity is 15 inches.

When the camera must set on a high tripod, the ground glass panel is quickly attached to the revolving back, for focusing from the rear.

Cut film, regular or *Super Speed*, is first choice for use with this camera so one cut film holder (or one plate holder) is included. The film pack adapter, plate magazine, roll holder or cut film magazine can be attached.

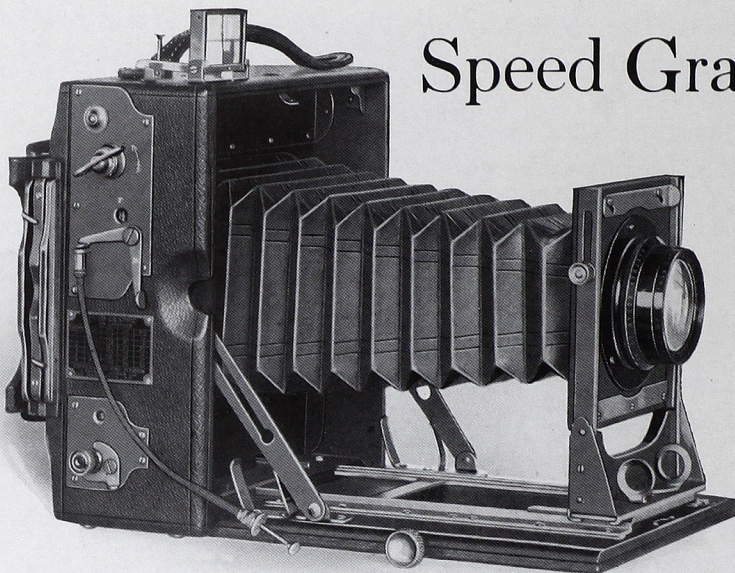
This camera's chief purpose is to make striking portraits, yet its wide range of speed, splendid lens and revolving back fit it for a considerable variety of commercial uses.

DETAILS

Dimensions, 9¾ x 9 x 10½ in.; focal capacity, 15 in.; weight with lens, 16¾ lbs.; size of lens board, 5 x 5 in.; minimum focus of lenses accommodated, 10 inches.

PRICES

	5 x 7
HOME PORTRAIT GRAFLEX without lens, including focusing panel and one cut film holder or one plate holder	\$225.00
With Kodak Anastigmat Lens <i>f</i> .4.5, No. 36	375.00
Graflex Roll Holder, No. 154	16.00
Graflex Cut Film Holder	4.00
Graflex Cut Film Magazine	18.00
Graflex Plate Magazine	18.00
Graflex Film Pack Adapter	8.50
Graflex Plate Holder	4.00
Leather Case for camera and roll holder or cut film magazine	23.50
Leather Case for camera and plate magazine	25.50
Extra Lens Board	1.50
Kodak Cut Film <i>Regular Speed</i> , doz.	1.45
Kodak Cut Film <i>Super Speed</i> , doz.	1.60
Kodak Film Pack, No. 515	1.90
Eastman Film Cartridge No. 154, 6 exposures95



Speed Graphic

THE 4 x 5 Speed Graphic is the aristocrat among folding cameras. It has the Graflex finish, Morocco leather on kiln-dried mahogany; it has the Graflex focal plane shutter and the Kodak Anastigmat lens *f.4.5*.

Press photographers pick this camera for theirs, which indicates its ready adaptability to all sorts of subjects under all sorts of conditions.

Speeds are 1/10 to 1/1000, twenty-four in number.

The Kodak Anastigmat *f.4.5* is in a removable lens board which fits tightly to a sturdy standard. The front rises, to control foregrounds.

Focusing is done with the ground glass panel, built into the back, or with the scale and finder. The finder is of the direct, eye-level type, and collapsible.

One cut film holder (plate holder optional) is regularly supplied and a film pack adapter can be attached. Note in the price list that the camera is also sold with the back fitted to take Graflex attachments, which permit interchangeable use of cut film, plates, roll film, film packs.

Two tripod sockets are provided.

The Speed Graphic is a handsome camera, popular among judges of good pictures.

DETAILS

Dimensions, 6½ x 4 x 6¾ in.; bellows capacity, 12 in.; weight with lens, 4¼ lbs.; focal length of lens, 6¾ inches.

PRICES

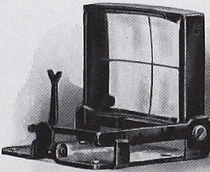
Including one cut film holder or one plate holder

	4 x 5
SPEED GRAPHIC, without lens	\$ 75.00
With Kodak Anastigmat Lens f.4.5, No. 32	116.00
*SPEED GRAPHIC (Graflex back), without lens	88.00
*With Kodak Anastigmat Lens f.4.5, No. 32	129.00
Graflex Plate Holder	2.50
Graflex Cut Film Holder	2.50
Film Pack Adapter (for use on Speed Graphic with regular back)	3.50
Graflex Roll Holder No. 153	13.50
Graflex Cut Film Holder	3.00
Graflex Cut Film Magazine	15.50
Graflex Plate Magazine	15.50
Graflex Film Pack Adapter	6.50
Graflex Plate Holder	3.00
Leather Case for camera and six holders	11.00
Kodak Pictorial Diffusion Disk, No. 32	5.00
Extra Lens Board	.75
Kodak Cut Film <i>Regular Speed</i> , doz	.90
Kodak Cut Film <i>Super Speed</i> , doz.	1.00
Kodak Film Pack No. 523.	1.10
Eastman Film Cartridge, 6 exposures, No. 153	.55

*When the Graflex type of back is desired, please specify "Speed Graphic with Graflex back."

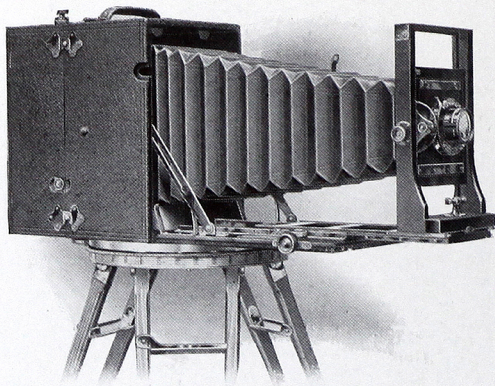
Graphic Sight Finder

A DIRECT-VISION, folding sight finder, to be attached to the top of the camera. The subject is centered on the image area when the intersection of the lines engraved on the finder lens is in direct line with the notch in the top of the vertical sight bar.



PRICES

	3¼ x 4¼	3¼ x 5½	4 x 5	5 x 7
Graphic Sight Finder	\$4.00	\$4.50	\$4.50	\$5.25



No. 10 Cirkut Camera

NO. 10 Cirkut is a revolving panoramic camera, for photographing views or groups. It makes negatives 6, 8 or 10 inches in height, of any width required to include the subject. Image size is also easily controlled; the Turner-Reich lens offers three focal lengths.

While an exposure is in progress a clockwork mechanism turns the camera smoothly on the tripod head. Simultaneously the film passes a narrow slot, through which it receives the light from the lens. The exposure allowed to each point on the film is variable between $1/2$ and $1/12$ of a second so that different conditions can be met.

Measurement scales show the amount of film needed for the view and the footage that has been used from the roll. By pressing a button, the end of a scene can be marked by a perforation, for guidance in cutting later.

The front board can be raised, and lowered. A ground glass focusing panel is built into the back.

DETAILS

Lens: Turner-Reich Convertible Anastigmat, Series II. Focal lengths: complete, $10\frac{1}{2}$ in.; front element, 24 in.; rear element, 18 in. Shutter: double valve type.

Accessories: Cirkut gears for regulating speed, Cirkut Tripod Head, Professional Tripod Legs, two carrying cases.

Dimensions of camera, 9 x 11 x 12 in.; focal capacity, 27 in.; weight, 19 lbs.; size of lens board, 4 x 4 inches.

PRICES

No. 10 Cirkut Camera, complete as described above \$405.00

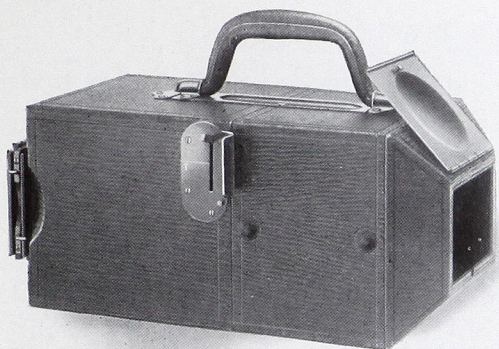
Eastman Film for No. 10 Cirkut Camera (White Label):

6 in. x 5 ft., \$1.45; 6 in. x 10 ft., \$2.90; 6 in. x 15 ft., \$4.35.

8 in. x 5 ft., \$1.90; 8 in. x 10 ft., \$3.80; 8 in. x 15 ft., \$5.70; 8 in. x 20 ft., \$7.60.

10 in. x 4 ft. \$1.90; 10 in. x 6 ft., \$2.90; 10 in. x 10 ft., \$4.80; 10 in. x 15 ft., \$7.20;

10 in. x 20 ft., \$9.60.



Folmer & Schwing Finger Print Camera

THOUGH originally intended for detective use, the Finger Print Camera has been put to many other interesting tasks. It produces exact size copies. Therefore it is uniquely suitable for photographing patterns, labels, signatures, printed matter and similar subjects.

This camera furnishes its own light. Four tiny bulbs in the front are supplied with current by batteries located within the instrument. During an exposure the opening is held against the surface that is to be photographed and the lamps illuminate it brightly.

Negative size is $2\frac{1}{4} \times 3\frac{1}{4}$ inches. One cut film holder or one plate holder is furnished. The back will take the $2\frac{1}{4} \times 3\frac{1}{4}$ Graflex attachments, however, so that roll film or packs can be used. The lens is a Kodak Anastigmat *f*.6.3. The shutter is a dependable device, easy to set and easy to release.

DETAILS

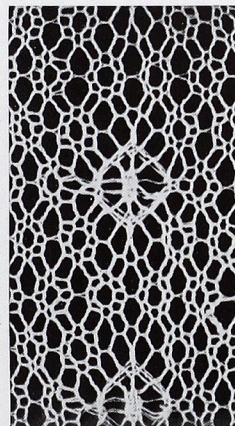
Dimensions, $11\frac{3}{4} \times 6 \times 6$ in.; weight $5\frac{1}{2}$ lbs.

PRICES

FOLMER & SCHWING FINGER PRINT CAMERA
with one cut film holder or one plate holder,
two batteries, six extra lamps, Kodak Anastigmat Lens *f*.6.3 \$55.00
Leather Case for camera 10.25
For prices of $2\frac{1}{4} \times 3\frac{1}{4}$ Graflex holders magazines, film pack adapter and of films, see page 9.



From a Finger Print
Camera negative



An exact scale copy of a lace sample. Only one-third of the picture is shown here.

Kodak Cut Film

LIGHT weight, small bulk, safety from breakage: these are physical properties that make Kodak Cut Film so pleasant to work with. What is more, it produces superior negatives because it is non-halation and meets every standard for fineness of grain, latitude and gradation.

Kodak Cut Film is as sensitive as the best portrait plates; and Kodak Cut Film *Super Speed* has a much faster emulsion.

Super Speed is the film to use when the subject requires a short exposure or when the light is difficult. For indoor story-telling pictures and portraits, for snapshots in dull light, it is especially valuable. And on easier occasions the protection that its extra speed offers against underexposure is still worth while.

Kodak Cut Film can be used in a cut film holder, the Graflex Cut Film Magazine, or, with sheaths, in any plate holder.

PRICES

	$2\frac{1}{4} \times 3\frac{1}{4}$	$3\frac{1}{4} \times 4\frac{1}{4}$	$3\frac{1}{4} \times 5\frac{1}{2}$	4 x 5	5 x 7
Kodak Cut Film <i>Regular Speed</i> , doz.	\$0.45	\$0.65	\$0.90	\$0.90	\$1.45
Kodak Cut Film <i>Super Speed</i> , doz.	.50	.75	1.00	1.00	1.60

Kodak Cut Film Sheath

Adapts a plate holder to the use of Kodak Cut Film. It is made of aluminum, ribbed to insure a uniform focal plane. Instantly inserted or removed.

PRICES

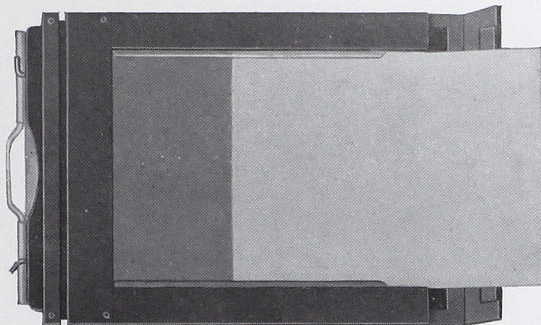
	$2\frac{1}{4} \times 3\frac{1}{4}$	$3\frac{1}{4} \times 4\frac{1}{4}$	$3\frac{1}{4} \times 5\frac{1}{2}$	4 x 5
Kodak Cut Film Sheath . . .	\$.10	\$.10	\$.15	\$.15

No. 3 Eastman Film Sheath

For adapting 5 x 7 and $6\frac{1}{2} \times 8\frac{1}{2}$ plate holders to the use of cut film.

PRICES

	5 x 7	$6\frac{1}{2} \times 8\frac{1}{2}$
No. 3 Eastman Film Sheath . . .	\$.20	\$.25



Graflex Cut Film Holder

ALTHOUGH the Graflex Cut Film Holder looks and attaches, like a plate holder, the two are quite different in design and operation.

When the dark slide is withdrawn, the end of the frame opens on a hinge as shown in the above illustration. The film slips in or out smoothly, making loading and unloading easy indeed. And the film stays flat, held in narrow channels, the sensitized surface forming a uniform focal plane.

With this device cut film advantages are available to the user of any Graflex except the 1A and 3A Autographic models which take cartridge film only.

PRICES

	$2\frac{1}{4} \times 3\frac{1}{4}$	$3\frac{1}{4} \times 4\frac{1}{4}$	$3\frac{1}{4} \times 5\frac{1}{2}$	4×5	5×7
Graflex Cut Film Holder	\$2.50	\$2.75	\$3.00	\$3.00	\$4.00

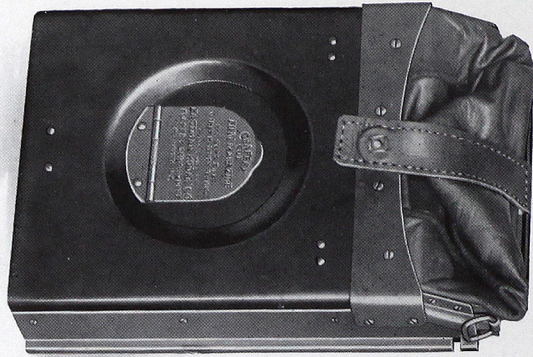
Graflex Plate Holder

Prices given for Graflex Cut Film Holders apply also to the corresponding sizes of Graflex Plate Holders.

Graphic Cut Film Holder and Graphic Plate Holder

PRICES

$3\frac{1}{4} \times 4\frac{1}{4}$, \$2.50; $3\frac{1}{4} \times 5\frac{1}{2}$, \$2.50; 4×5 , \$2.50; 5×7 , \$2.75; $6\frac{1}{2} \times 8\frac{1}{2}$, \$3.00; 8×10 , \$4.00.



Graflex Cut Film Magazine

AN attachment that arms the Graflex for a dozen exposures without reloading. It carries twelve films, ready for use, each in a metal septum. By means of a sliding rod, the septum containing an exposed film is drawn into a light-tight leather bag (shown folded) and re-inserted behind the other films.

Each septum bears a numeral so that the number of exposures made since loading can be quickly told by looking through the ruby window that lies underneath the small spring flap on the back.

The Graflex Cut Film Magazine can be detached from the camera at any time and one or more films removed in a darkroom without waiting for all twelve to be exposed. When the camera is placed in its case, the magazine stays right in position—ready.

DETAILS

	$2\frac{1}{4} \times 3\frac{1}{4}$	$3\frac{1}{4} \times 4\frac{1}{4}$	$3\frac{1}{4} \times 5\frac{1}{2}$	4×5	5×7
Dimensions	$5\frac{1}{8} \times 3\frac{1}{4} \times 1\frac{3}{8}$	$6\frac{1}{4} \times 4\frac{1}{4} \times 1\frac{3}{8}$	$7\frac{5}{8} \times 3\frac{7}{8} \times 1\frac{5}{8}$	$7 \times 5 \times 1\frac{5}{8}$	$9\frac{1}{4} \times 6\frac{1}{4} \times 1\frac{5}{8}$
Weight loaded	12 oz.	18 oz.	1½ lbs.	1½ lbs.	2½ lbs.

PRICES

	$2\frac{1}{4} \times 3\frac{1}{4}$	$3\frac{1}{4} \times 4\frac{1}{4}$	$3\frac{1}{4} \times 5\frac{1}{2}$	4×5	5×7
Graflex Cut Film Magazine	\$13.00	\$14.50	\$15.50	\$15.50	\$18.00

Graflex Plate Magazine

This attachment is similar to the Graflex Cut Film Magazine, but is necessarily bulkier, and heavier when loaded. Prices are the same as for the Graflex Cut Film Magazine.



Graflex Film Pack Adapter

WITH this attachment in use, the Graflex, unless it is a 1A or 3A Autographic, loads in daylight with Kodak Film Packs. Twelve exposures can be made without re-loading; the Kodak Film Pack Tank (see page 31) provides easy means of developing several films at once.

The Graflex Film Pack Adapter is covered with leather like that found on Graflex cameras themselves.

PRICES

	$2\frac{1}{4} \times 3\frac{1}{4}$	$3\frac{1}{4} \times 4\frac{1}{4}$	$3\frac{1}{4} \times 5\frac{1}{2}$	4×5	5×7
Graflex Film Pack Adapter	\$5.50	\$5.50	\$6.50	\$6.50	\$8.50

Kodak Film Packs

EACH pack contains twelve non-curling, non-halation, properly orthochromatic films. Single films can be taken from the pack in a darkroom without waiting until all are exposed.

After each picture a paper tab is withdrawn and torn off, uncovering an unused film, ready for the next subject. Thus, as many as a dozen exposures can be made in quick succession.

PRICES

$2\frac{1}{4} \times 3\frac{1}{4}$	$3\frac{1}{4} \times 4\frac{1}{4}$	$3\frac{1}{4} \times 5\frac{1}{2}$	4×5	5×7
No. 520, \$0.50	No. 518, \$0.90	No. 522, \$1.10	No. 523, \$1.10	No. 515, \$1.90



Graflex Roll Holder

QUICKLY attached to any Graflex (except the 1A and 3A Autographic models), this device permits the use of Eastman Film Cartridges. The advantages are obvious: the Film is loaded in daylight and can be daylight-developed in a Kodak Film Tank.

The current Graflex Roll Holder is an improved model in which the spools stay parallel and friction is avoided. A retarding ratchet keeps the film flat and taut. After inserting the dark slide the holder can be detached and re-attached between exposures but the camera goes into the case without its removal.

PRICES

GRAFLEX ROLL HOLDERS

3¼ x 2¼	For Eastman Film Cartridge No. 150	\$12.50
4¼ x 3¼	For Eastman Film Cartridge No. 151	12.50
5½ x 3¼	For Eastman Film Cartridge No. 152	13.50
5 x 4	For Eastman Film Cartridge No. 153	13.50
7 x 5	For Eastman Film Cartridge No. 154	16.00

Graflex Roll Holders fit only Graflex cameras and Graphic cameras with Graflex backs.

Eastman Film Cartridges

FOR GRAFLEX ROLL HOLDERS

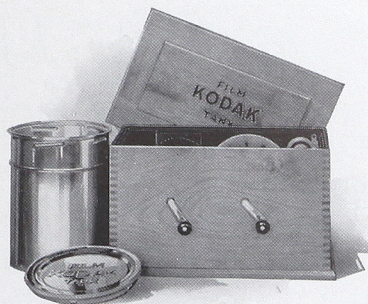
No. 150, 3¼ x 2¼,	6 Exposures	\$ 0.25
No. 151, 4¼ x 3¼,	6 Exposures45
No. 152, 5½ x 3¼,	6 Exposures55
No. 153, 5 x 4,	6 Exposures55
No. 154, 7 x 5,	6 Exposures95

To avoid error, order film by number.

Kodak Film Tank

FOR daylight development of Eastman Film Cartridges used in Graflex Roll Holders, and of Kodak Film, used in the 1A and 3A Autographic Graflex cameras.

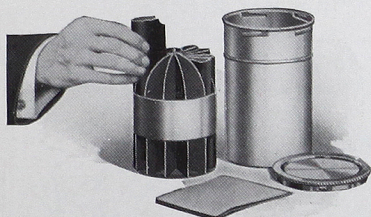
Each exposure on the roll yields its best by this method.



PRICES

3½-inch Kodak Film Tank, for 3¼ x 5½ (3A) Kodak Film, 2½ x 4¼ (1A) Kodak Film and 3¼ x 2¼ Eastman Film Cartridge No. 150 . . .	\$6.50
5-inch Kodak Film Tank, for 4¼ x 3¼ Eastman Film Cartridge No. 151 . . .	8.00
7-inch Kodak Film Tank, for 5½ x 3¼ Eastman Film Cartridge No. 152, 5x4 Eastman Film Cartridge No. 153 and 7 x 5 Eastman Film Cartridge No. 154 . . .	10.00

Kodak Film Pack Tank



A DIVIDED metal cage and cup comprise this outfit for developing all or part of a film pack at one time.

In loading, each film is slipped into a compartment, as shown. The cage is then lowered into the developer that is contained in the solution cup, which is light-tight when covered.

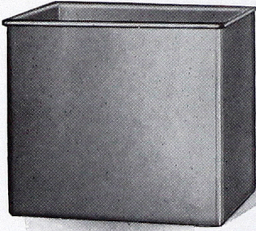
By following the time and temperature method, negatives of uniform quality are produced.

The Kodak Film Pack Tank is made in three sizes. Two are designed to hold twelve films; the third holds six 5 x 7 films.

PRICES

Kodak Film Pack Tank No. 1, for twelve 2¼ x 3¼ films	\$1.75
Kodak Film Pack Tank No. 2, for twelve 3¼ x 4¼, 3¼ x 5½, or 4 x 5 films	3.50
Kodak Film Pack Tank No. 3, for six 5 x 7 films	4.00

Kodak Developing Box No. 1



UNIFORM development of Kodak Cut Film by the time and temperature method is quick and easy with this box. It is made of incorrodible metal and measures 4 x 5 $\frac{1}{4}$ x 6 inches.

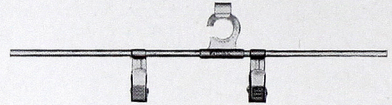
Twelve 2 $\frac{1}{4}$ x 3 $\frac{1}{4}$, 3 $\frac{1}{4}$ x 4 $\frac{1}{4}$, 3 $\frac{1}{4}$ x 5 $\frac{1}{2}$ or 4 x 5 films, each in a Kodak Cut Film Developing Hanger, can be developed at one time.

THE PRICE

Kodak Developing Box No. 1, without hangers \$2.00

Kodak Cut Film Developing Hanger

THIS hanger is nine inches long so that it lies securely across the six-inch top of a Kodak Developing Box No. 1. Each film is gripped by two easily operated, incorrodible metal clips.



THE PRICE

Kodak Cut Film Developing Hanger, each \$.20

Eastman Developing and Fixing Box

For the larger sizes of cut film. During development or fixing, the films are suspended in Eastman Film Developing Hangers No. 4. The box is made of hard rubber.

PRICES

	No. 2 for 8 5 x 7 films	No. 3 for 20 5 x 7 or 12 6 $\frac{1}{2}$ x 8 $\frac{1}{2}$ films
Eastman Developing and Fixing Box	\$4.00	\$6.00

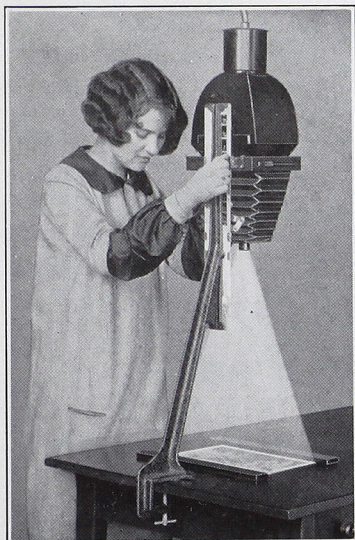
Eastman Film Developing Hanger No. 4

A strong, light metal frame, which holds the film securely in channels, without clips.

PRICES

	5 x 7	6 $\frac{1}{2}$ x 8 $\frac{1}{2}$
Eastman Film Developing Hanger No. 4	\$.60	\$.75

The Kodak Auto-Focus Enlarger



MOVE the camera up and down and while the image size changes, the focus remains sharp. Enlarging thus becomes a simplified process that is rapid and as easy as contact printing.

The standard clamps to an ordinary table and the bromide paper is held in position by quickly adjusted paper holders.

Prints any size from $1\frac{1}{2}$ to $3\frac{1}{2}$ diameters can be made from either plate or film negatives up to 4 x 6 inches. The largest possible print is 14 x 21. $2\frac{1}{4}$ x $3\frac{1}{4}$ negatives will make $7\frac{7}{8}$ x $11\frac{3}{8}$ inch enlargements.

The lens is a Kodak Anastigmat, which insures sharpness.

Ventilated lamp house has a capacity for an electric lamp (not supplied) of from 75 to 200 watts.

A diffusing disc is obtainable separately for soft focus effects.

Kodak Auto-Focus Enlarger with Kodak Anastigmat Lens, electric cord and plug, set of six flexible metal masks \$33.00
Diffusing Disc 1.00

Eastman Bromide Papers

FOR enlargements, Eastman Bromide Papers are emphatically faster than the other developing papers and as easy to use as Velox. Grades: Velvet, Brilliant Velvet, Royal, Enameled, Matte-enamel and Standard B and C. Royal Bromide is a buff paper, suited for making sepia enlargements by redevelopment.

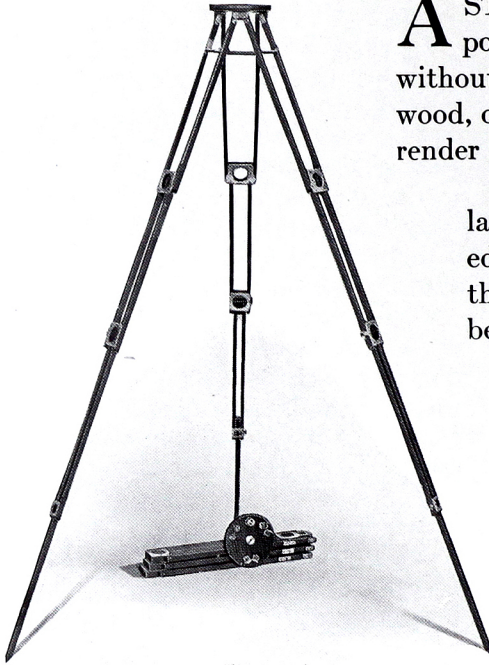
Size	Per Doz.	Size	Per Doz.	Size	Per Doz.
5 x 7	\$0.50	8 x 10	\$1.10	14 x 17	\$3.15
5 x 8	.55	10 x 12	1.70	16 x 20	4.20
$6\frac{1}{2}$ x $8\frac{1}{2}$.80	11 x 14	2.10	18 x 22	5.25

Standard BB and CC Double Weight

Size	Per Doz.	Size	Per Doz.	Size	Per Doz.
5 x 7	\$0.60	$6\frac{1}{2}$ x $8\frac{1}{2}$	\$1.00	10 x 12	\$2.15
5 x 8	.70	8 x 10	1.40	11 x 14	2.65

Other sizes in proportion.

Crown Tripod



A STRONG, rigid, telescopic tripod that holds a heavy camera without vibrating. Made of cherry wood, oil soaked, then shellacked to render it waterproof.

The head of this tripod is large and substantial. Near its edge is a second screw socket so that the weight of a camera can be properly balanced when the bellows is extended.

Expansion brackets keep the legs firmly attached when in use; binding screws cannot be lost; joints fit snugly. A well-designed, and sturdily built tripod.

DETAILS				
Length closed	Length extended	Weight	Diameter of top	Weight of Camera carried
No. 1—16 in.	4 ft. 4 in.	36 oz.	4 in.	6 lbs.
No. 2—17 in.	4 ft. 8 in.	65 oz.	6 in.	9 lbs.
No. 4—20 in.	5 ft. 6 in.	90 oz.	6½ in.	18 lbs.

PRICES

Crown Tripod	No. 1, \$10.00	No. 2, \$11.00	No. 4, \$13.50
------------------------	----------------	----------------	----------------

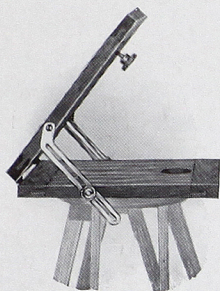
Carrying Case for Crown Tripods

A sole leather case consisting of a long compartment for the Crown Tripod legs, and a smaller compartment to hold the tripod top

PRICES

No. 1, for Tripod No. 1 . . .	\$6.50	No. 2, for Tripod No. 2 . . .	\$7.75
No. 4, for Tripod No. 4 . . .	\$9.25		

Crown Tilting Tripod Top



WITH this device in use on a Crown Tripod, the camera can be pointed upward or downward, at any angle from horizontal to vertical, without adjusting the tripod legs.

PRICES

No. 1 Crown Tilting Tripod Top, for 4 in. head \$3.25
 No. 2 Crown Tilting Tripod Top, for 6 in. head 3.50
 No. 4 Crown Tilting Tripod Top, for 6½ in. head 4.00

Eastman Metal Trimmer No. 10

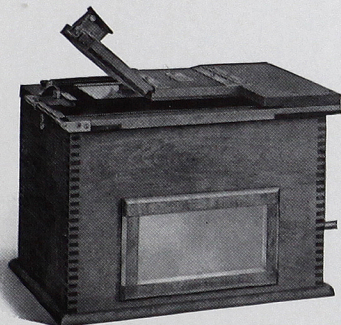
A STURDY trimmer that cuts easily and precisely. Its table measures ten inches each way, is engraved in squares, has a brass ruler and a transparent trimming guide.



THE PRICE

Eastman Metal Trimmer No. 10, finished in polished enamel . . . \$15.00

Kodak Amateur Printer



A SELF-CONTAINED outfit for making white margin prints from film negatives of any size from 1⅝ x 2½ up to 4 x 5½ inches. A small ruby bulb within the box provides light by which to adjust film, mask and paper, and latching the hinged pressure board automatically turns on a 60-watt Mazda lamp for the exposure. The position of this lamp can be changed

to give even illumination on negatives of various sizes. An orange window in the side serves as a safelight while developing prints.

THE PRICE

Kodak Amateur Printer, with complete electrical equipment except 60-watt Mazda bulb . . . \$10.00

Velox

“Look for VELOX on the back”

VELOX paper brings out the best that is in a negative and often produces a better print than the negative itself promises. It partially corrects for error in exposure and compensates considerably for the uncontrolled lighting by which the amateur works.

Velox can do this because its four degrees of contrast cover a wide latitude that permits emphasizing or subduing the character of the negative in printing. It is the only photographic paper manufactured for use with amateur negatives especially.

GRADE	SURFACE	CONTRAST			
Velvet Velox	Semi-Gloss	*1	*2	*3	*4
Portrait Velox	Smooth Matte	2			
Carbon Velox	Matte	1	2	3	4
Glossy Velox	Enameled	1	*2	*3	4

*Furnished also in Double-weight Velox. Double-weight papers require no mount and when printed under a mask, which will insure a white margin, offer a very artistic effect.

Each sheet bears the name “Velox” faintly tinted on the back, to indicate that the paper best suited for amateur negatives has been used.

Velox is a non-abrasion, developing-out paper. Each degree of contrast is offered in a variety of surfaces as listed in the table above.

Extremely contrasty negatives give best results on No. 1; average and also contrasty negatives print well with No. 2; flat negatives require No. 3; exceedingly thin or exceedingly flat negatives produce good prints on No. 4.

PRICES

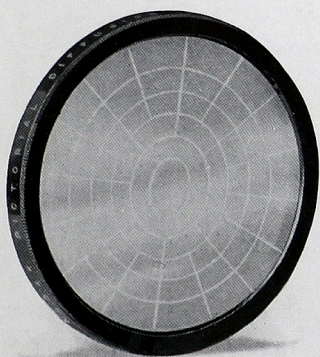
Size Inches	Single Weight			Double Weight		
	Dozen	½ Gross	Gross	Dozen	½ Gross	Gross
1½ x 2½	\$0.12		\$1.10	\$0.15		\$1.40
2¼ x 3¼	.12		1.10	.15		1.40
2½ x 4¼	.15		1.35	.20		1.70
3¼ x 4¼	.20		1.75	.25		2.20
2½ x 4½	.20		1.75	.25		2.20
3¼ x 5½	.20		2.00	.25		2.50
4 x 5	.25		2.30	.30		2.90
5 x 7	.40	\$2.10	3.90	.50	\$2.60	4.90
Velox Post-cards, 3⅞ x 5⅞, furnished in Velvet, Contrasts Nos. 2 and 3 and in Glossy, Contrasts Nos. 2 and 3				.30	1.50	2.90
Velox Double Post-cards, 3⅞ x 10½ inches				.60	3.00	5.80

Velox Sundries

Eastman M. Q. Developer per package of 5 tubes . . .	\$0.30
Nepera Solution, per 4-ounce bottle28
Ditto, per 16-ounce bottle84
Nepera Auxiliary Powders (for converting Nepera Solution to a film or plate developer), per package, 1 dozen35
*Velox Re-developer Tubes, for sepia toning, per package 12 tubes	1.08
Velox Liquid Hardener, per 4-ounce bottle25
Ditto, 8-ounce bottle35
Kodak Acid Fixing Powder for fixing Velox prints, per pound25
Ditto, 1/2 pound15
Ditto, 1/4 pound10

*Package includes bleaching agent.

Kodak Pictorial Diffusion Disk



THIS new auxiliary lens produces a soft, blended effect in the negative without the loss of brilliance that results when the image is thrown out of focus. Detail is sharp as ever, but toned down.

Now that it is obtainable this attachment is almost a necessity for photographing landscapes. And it is entirely suited for close-up work, as well, where softened lines will add to the attractiveness of the picture.

A Kodak Pictorial Diffusion Disk slips easily on or off the lens. Disks are now available to fit four of the Kodak Anastigmat lenses *f.4.5*. Order by number.

PRICES

No. 31 Kodak Pictorial Diffusion Disk for No. 31 Kodak Anastigmat <i>f.4.5</i>	\$5.00
No. 32 Kodak Pictorial Diffusion Disk for No. 32 Kodak Anastigmat <i>f.4.5</i>	5.00
No. 33 Kodak Pictorial Diffusion Disk for No. 33 Kodak Anastigmat <i>f.4.5</i>	5.00
No. 34 Kodak Pictorial Diffusion Disk for No. 34 Kodak Anastigmat <i>f.4.5</i>	6.00

Eastman Safelight Lamp



THIS well-built metal lamp hangs from an electric cord or fixture, takes a 10-watt bulb and is especially recommended for use over work table and trays. Unless otherwise specified the 5 x 7 Safelight supplied is of Series 2, for use with films or plates.

PRICES

Eastman Safelight Lamp, without bulb	\$ 3.00
Extra Safelight, 5 x 7, any series75

Kodak Safelight Lamp

A CONVENIENT lamp by which to examine negatives during development. Made of durable metal, white enameled inside. Electric fittings, except the 25-watt bulb, are included.

A 5 x 7 Safelight, Series 1, for use with films or plates not color sensitive, is supplied unless otherwise ordered.



PRICES

Kodak Safelight Lamp, without bulb	\$ 3.50
Extra Safelight, 5 x 7, any series75

Brownie Safelight Lamp



TO fit over a 10-watt bulb and screw into any electric socket. Contains Series 1 Safelight, unless otherwise ordered, in end and side.

PRICES

Brownie Safelight Lamp, without bulb	\$ 1.75
Extra Circular End Safelight, any series25
Extra Rectangular Safelight, any series40

Safelights

Available for safelight lamps described on the opposite page:

Series 00—Yellow light, for use with developing-out papers.

Series 0 —Bright orange light, for use with bromide paper and lantern plates.

Series 1 —Orange safelight, for use with films or plates not highly color sensitive.

Series 2 —Safelight for extra rapid orthochromatic plates sensitive to green but not red.

Series 3 —Green safelight, for use with red-sensitive panchromatic plates.

Series 4 —Bright green safelight, for use with ordinary plates, for those who cannot use a red light. Not safe for orthochromatic plates.

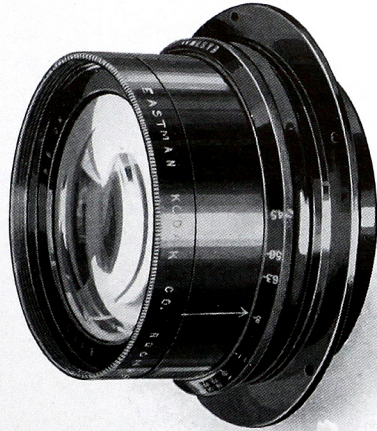
Kodak Anastigmat *f.* 4.5

THIS lens is an optical gem, formulated by Kodak scientists, made by Kodak craftsmen, tested by Kodak experts.

For definition and flatness of field it is the peer of any lens in the world, regardless of price. Even at full aperture it cuts sharply, clear to the margins. Throughout the image area, Kodak Anastigmat negatives have that brilliance and sparkle which mean quality in the contact print and character in the enlargement.

Kodak Anastigmat *f.* 4.5 is the proper lens for ambitious photography. It admits so much light that ample exposure is easy; it widens the picture possibilities of the camera to which it is fitted.

Each Kodak Anastigmat *f.* 4.5 is mounted as shown in the illustration, complete with an iris diaphragm controlled by a milled ring on which the *f.* markings are engraved.



No.	Size of Film covered with Stop <i>f.</i> 4.5 Inches	Equivalent Focus in Inches	Price of Lens in barrel with Iris Diaphragm
30	2 $\frac{1}{4}$ x 3 $\frac{1}{4}$	4 $\frac{3}{8}$	\$ 31.00
31	3 $\frac{1}{4}$ x 4 $\frac{1}{4}$	5 $\frac{1}{2}$	35.25
32	4 x 5	6 $\frac{3}{8}$	41.00
33	5 x 7	7 $\frac{1}{2}$	50.00
34	5 x 8	8 $\frac{1}{2}$	62.50
35	6 $\frac{1}{2}$ x 8 $\frac{1}{2}$	10	108.00
36	8 x 10	12	150.00

Tested Chemicals



CERTAINTY in making negatives and prints depends as much on the quality of your chemicals as on any other one thing. All Kodak chemicals are tested, both photographically and for purity, before the E. K. C. tested seal is allowed to go on them.

Eastman Special Developer Powders, per package of 5, in sealed glass tubes	\$.35
Eastman M. Q. Developer, per package of 5 tubes	.30
Eastman Hydrochinon Developer Powders, per package of 5 tubes	.30
Eastman Pyro Developer Powders, per package of 5 tubes	.25
Elon, per 1-ounce	.52
Hydrochinon, per 1-ounce can	.22
Eastman Permanent Crystal Pyro, per 1-ounce bottle	.27
Velox Re-developer tubes, package of 12 tubes	1.08
Hyposulphite of Soda, granular, per pound	.18
Alum, powdered, per pound	.20
Kodak Acid Fixing Powder, per pound package	.25
Ditto, per ½-pound package	.15
Ditto, per ¼-pound package	.10
Eastman Intensifier, per glass tube	.15
Eastman Reducer and Stain Remover, per box of 5 tubes	.50
Eastman Opaque No. 1, per tube	.25
Potassium Bromide, granular, per ounce	.15
Acetic Acid 28 per cent pure, per 1-pound bottle	.35
Citric Acid, 4-ounce bottle	.38
Kodak Tested Carbonate of Soda (desiccated), per 1-pound bottle	.40
Kodak Tested Sulphite of Soda (desiccated), per 1-pound bottle	.45

For Velox preparations, see page 37.

Terms

THE prices in this catalogue are strictly net, except to regular dealers who carry the goods in stock. These prices are, however, subject to change without notice. For the convenience of our customers, we recommend that they make their purchases from a dealer in photographic goods, as by so doing they can save both transportation charges and time.

THE FOLMER GRAFLEX CORPORATION
ROCHESTER, N. Y.

EASTMAN KODAK COMPANY
ROCHESTER, N. Y.

