

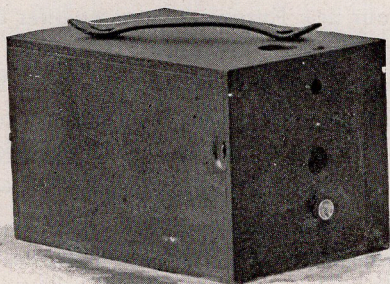
EASTMAN'S

\$ 4.00

No. 2 ✻ ✻

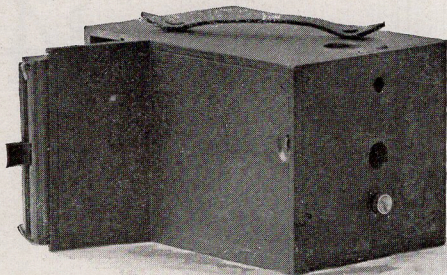
EUREKA CAMERA.

FOR $3\frac{1}{2} \times 3\frac{1}{2}$ PICTURES.



NO. 2 EUREKA CAMERA, CLOSED.

\$ 4.00



NO. 2 EUREKA CAMERA, OPEN FOR RECEIVING PLATE HOLDER.

IN our new Eureka camera we offer the amateur a glass plate instrument that can be depended upon, and at a price that is only made possible by the magnificent facilities at our command. It contains no uncertain and untried devices for cheapening cost and no clumsy attempts at making it a "magazine" camera.

It is an honest camera, honestly made.

THE LENS.

The first essential to good picture taking is a good lens. Our No. 2 Eureka lens is strictly achromatic, has a fixed focus of $4\frac{1}{4}$ inches, is of fine quality and every lens must pass our own rigid inspection before it is put into the hands of a customer. It must be perfect.

THE SHUTTER.

The Eureka safety shutter is adapted to both time and instantaneous exposures and is simple and rapid. By turning a button the shutter is set without exposing the plate. A touch on the lever makes the exposure without jarring the camera, and by simply pulling out this same lever the action is changed from instantaneous to time exposures. A set of three stops are also provided.

SIZE AND CAPACITY.

The No. 2 Eureka is as light as is consistent with strength, and in size is $4\frac{5}{8} \times 4\frac{3}{4} \times 7\frac{1}{2}$ inches. A space in the back provides for carrying three double plate holders for $3\frac{1}{2} \times 3\frac{1}{2}$ pictures.

ADAPTABILITY.

The No. 2 Eureka camera is perfectly adapted to hand or tripod use, being fitted with standard size brass tripod socket, and will take snap-shots out of doors, time exposures indoors or flash-lights at night.

Fitted with view finder for locating the image with accuracy.

FINISH.

Neatly covered with fine grain leather and fitted with leather handle for carrying.

PRICE LIST.



No. 2 Eureka camera, with one double plate holder, achromatic lens, - - - - -	\$4.00	
Double plate holders, 3½ x 3½ each, - - -	.75	
Eastman's Extra Rapid Dry Plates, per dozen 3½ x 3½,	.35	
Eastman's A B C Developing and Printing outfit, com- plete for developing and printing 24 pictures, -	1.50	
Eastman's Solio paper, 3½ x 3½ per dozen, - -	.15	
Solio combined Toning and Fixing Solution, per 8 oz. bottle, - - - - -	.50	
Toning and Fixing Solution can be shipped by mail in 4 ounce bottles as follows : 4 ounces Toning and Fixing Solution, (<i>20c. extra postpaid.</i>) - -		.25
Black Sole Leather Carrying Case, - - -	1.25	
Staff Tripod, - - - - -	1.50	
Bulls-Eye Tripod (Folds in Two Sections), - -	2.00	
Eastman's Hydrochinon Developer Powders per doz., (Sufficient for 48 oz. developer.) - - -	.50	
Hyposulphite Soda, pulverized, per pound, - -	.10	
Bromide Potassium, per ounce bottle, - - -	.15	
Mounts, white embossed, per doz., - - -	.14	
“ “ “ “ hundred - - -	1.10	
Eastman's Orange Candle Lamp, - - -	.25	
No. 1 Kodak Dark Room Lamp, one inch wick, -	1.50	
No. 2 Kodak Dark Room Lamp, ⅝ inch wick, -	1.00	
Luxo Flash Lamp, - - - - -	1.25	
“ “ powder, per oz. - - - - -	.60	

EASTMAN KODAK CO.

Rochester, N. Y.