

**INSTRUCTIONS
FOR WORKING**

**THE "SIBYL"
POCKET
CAMERAS**

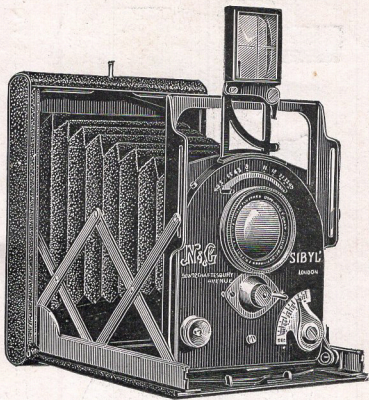
**With Valuable Hints on
Hand - Camera Work,**



NEWMAN & GUARDIA, LTD.,

**17 AND 18, RATHBONE PLACE,
OXFORD STREET, LONDON, W.**

COPYRIGHT

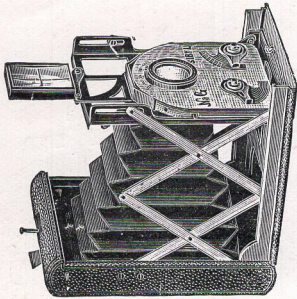


THE "SIBYL" CAMERA.
Model 2B.

The "SIBYL,"



FOLDED FOR CARRYING
IN POCKET.



OPENED READY FOR WORK.

**INSTRUCTIONS - -
FOR WORKING -
THE "SIBYL" - -
POCKET CAMERAS.**

COPYRIGHT.

Newman & Guardia, Ltd.,
17 and 18, Rathbone Place,
Oxford Street, London, W.

Telegraphic Address:
'GONIOMETER, LONDON.'

Telephone
3525 CENTRAL.

CONTENTS.

	PAGE
Double Extension, The	24
Exposure	13, 19, 26
Film Pack Adapter Changing Box and Dark Slides	27, 28, 29, 30
Focussing	11, 18, 25, 27
Hints on Hand-Camera Work	6
Illustrations	1, 2, 22, 23
Instrument, to Open the	17, 24
„ Close the	17, 24
Interiors	14
Lens, The	8
“ N. & G. Developer	11
„ Plates	10
Plates	8, 9
Rising Front, The	19, 26
Shutter, The	8, 13, 18, 19, 20, 25, 27
“ Sibyl ” Accessories, Prices of	30, 31, 32
“ Sibyl ” Cameras, Sizes, Weights and Prices of	5
“ Sibyl ” De Luxe Model, Instructions for Working the	21

SIZES, WEIGHTS, & PRICES
OF
“SIBYL” CAMERAS.

Model No.	Name and Description of Camera.	Outside Measurements when closed.	Approximate Weight of Camera.	Prices, complete.
1	“DE LUXE.” $\frac{1}{4}$ plate. Double Extension.	Inches. $6 \times 4\frac{1}{4} \times 1\frac{5}{8}$	26 oz.	£ s. d. 21 0 0
2A and 2B	“SPECIAL.” $\frac{1}{4}$ plate, 2A f/4.8. 2B f/4.5.	$5\frac{7}{8} \times 4\frac{1}{4} \times 1\frac{7}{16}$	20 $\frac{1}{2}$ oz.	2A 16 16 0 2B 17 17 0
3	“TESSAR.” $\frac{1}{4}$ plate.	$5\frac{7}{8} \times 4\frac{1}{4} \times 1\frac{7}{16}$	20 $\frac{1}{4}$ oz.	14 14 0
4	“COOKE.” $\frac{1}{4}$ plate.	$5\frac{7}{8} \times 4\frac{1}{4} \times 1\frac{7}{16}$	19 $\frac{3}{4}$ oz.	14 0 0
5	“TESSAR.” $3\frac{1}{2} \times 2\frac{1}{2}$ plate. ($6\frac{1}{2} \times 9$ cm.)	$5\frac{1}{16} \times 3\frac{9}{16} \times 1\frac{3}{16}$	13 $\frac{3}{4}$ oz.	10 10 0
6	“COOKE.” $3\frac{1}{2} \times 2\frac{1}{2}$ plate. ($6\frac{1}{2} \times 9$ cm.)	$5\frac{1}{16} \times 3\frac{9}{16} \times 1\frac{3}{16}$	13 $\frac{3}{4}$ oz.	9 9 0

:: Hints on ::
Hand-Camera Work.



THE "SIBYL" is a really efficient Pocket Camera containing all the adjustments required for General Photographic Work, and capable of producing negatives of the finest quality.

The following Hints will help towards quickly obtaining a high average of good results. They are intended for Amateurs possessing some knowledge of photographic technique, but *all Photographers* are advised to carefully read and *carry out* our sugges-

tions. Even Experts will find in them "wrinkles" which, if followed, will certainly tend to further improve the quality of their work.

NOTE.—*Beginners without any previous knowledge of Photography should first read through one of the many Manuals which provide such general information on the Principles of Photography, as applies to all Cameras.*

We recommend and supply the following :

Practical A B C of Photography, by E. J. Wall.

Early Work in Photography, by Ethelbert Henry.

Photography for All, by Jerome Harrison.

Modern Photography, by W. K. Burton.

Price 1/0 each ; by Post, 1/2.

Buy the Camera *before* you want it ; it is a mistake to get one filled with plates, and to start immediately on a journey, trusting to find out how to work it "as you go along."

To find out the efficiency of the Shutter, the power of the Lens and the speed of Plates :

Set the Camera, fix it on a Tripod, and point it to an Open Landscape or a Street View without strong shadows and in sunlight. Set the Focussing Scale at "12 yards," and stop the Lens down to $f/16$. Withdraw the Shutter of the Dark Slide about $\frac{1}{2}$ -inch. Set the Shutter at $\frac{1}{64}$ th second, and give that exposure eight times. Withdraw the Slide another $\frac{1}{2}$ -inch and give the same exposure four times; expose another $\frac{1}{2}$ -inch twice, another $\frac{1}{2}$ -inch once, and a fifth $\frac{1}{2}$ -inch once again. Now develop the plate with a *Strong* Developer, and you will get a negative with an image made up of six transverse bands, representing respectively exposures *equivalent* to $\frac{1}{4}$, $\frac{1}{8}$, $\frac{1}{16}$, $\frac{1}{32}$, and $\frac{1}{64}$ th at $f/16$, and one strip unexposed, Print this negative, and you will see at once which is the correct exposure for that particular kind of Subject, Light, Stop, Plate and Developer. Such a test negative will teach one more than any amount of arbitrary advice.

NOTE.—*The value of the Exposures given on preceding page is, of course, arrived at as follows :*

Strips.

1		8	4	2	1	1=16 times $\frac{1}{64}$ th = $\frac{1}{4}$ sec.
2		4	2	1	1= 8	,, ,, = $\frac{1}{8}$,,
3			2	1	1= 4	,, ,, = $\frac{1}{16}$,,
4				1	1= 2	,, ,, = $\frac{1}{32}$,,
5					1= 1	,, ,, = $\frac{1}{64}$,,
6						0=plain glass.

Plates or Films.

“Extra Rapid” Plates or Films should always be used, provided they are of good quality; when you find a brand which you like, *stick to it*, at least for one season. Plates are, as a rule, better and faster than Films; use the former whenever possible.

NOTE.—*Either Plates or Cut Films can be used in the “Sibyl” Single Dark Slides. All brands of sensitive material can be used.*

The "N. & G." Plates.

The "N. & G." Plates have been placed on the market in order to provide users of "N. & G." Cameras, and others, with a reliable material, rich in Silver, and of Uniform Speed. They are prepared from *Picked Emulsion*, coated on *Specially Thin Glass*.

PRICES.

Speeds	$3\frac{1}{2} \times 2\frac{1}{2}$	$\frac{1}{4}$ -Plate	5×4	$\frac{1}{2}$ -Plate
H. & D.	Per doz.		Per doz.	Per doz.

N. & G. SPECIAL FINE GRAIN.

200	1/-	1/6	2/6	3/8
-----	-----	-----	-----	-----

N. & G. H.S. HIGH SPEED.

350	1/-	1/6	2/6	3/8
-----	-----	-----	-----	-----

N. & G. S.R. SPECIAL RAPID.

250	9d.	1/-	1/7	2/3
-----	-----	-----	-----	-----

N. & G. ORTHO.

170	9d.	1/-	1/7	2/3
-----	-----	-----	-----	-----

N. & G. NYDIA, FINE GRAIN.

250	—	1/2 Pkt. of 8.	—	—
-----	---	-------------------	---	---

BACKED PLATES, EXTRA ALL MAKES.

3d.	3d.	4d.	6d.
-----	-----	-----	-----

We recommend the following:

“N. & G.” Developer.

FOR HAND-CAMERA WORK.

This is a *Pyro-Soda Developer*, prepared from the Purest Chemicals and Distilled Water, according to a Special Formula. It preserves the full energy of the ingredients undiminished for any length of time, and gives Brown Negatives of excellent quality, which can be made “Soft” or “Plucky” at will, to suit any printing process.

No other Developer will give such good Negatives from short and “high-speed” exposures.

Price 1/6 and 2/6 the Set of Two Bottles Concentrated Solutions. Packing and Inland Postage, 9d.

Focussing. (See also page 18).

There is no difficulty whatever in focussing with a “Sibyl” Camera. The instrument is not likely to be used *in the hand* for objects nearer than three yards, and all

objects beyond nine yards will be at "infinity," *i.e.*, quite sharp with the "Sibyl" Lens at $f/8$, and at its normal distance from the plate. In the very worst case, therefore, one need only learn to measure from about three to nine yards. When the Lens is stopped down to $f/11$ or $f/16$, the "Depth of the Field" becomes so great that, except for very near objects, even if one is considerably out in estimating the distance, the image is still likely to be fairly sharp.

The Scale of every "Sibyl" Camera is *especially* measured for its own Lens, and is absolutely correct. When estimating distances, count the yards from your feet towards the subject. Always aim to focus the Camera *somewhat in front* of the subject; that is to say, if you estimate a person to be standing 6 yards from the Camera, rack out to $5\frac{1}{2}$ yards. For General subjects use the instrument at "12 yards," and reserve the actual "infinity" for *very distant* objects only.

NOTE.—The "N. & G." Telemeter will quickly teach the beginner to estimate distances correctly. Price 1/- in Case.

Exposure.

The Iris Diaphragm and Shutter Scales are marked for :—

APERTURES.

Model

No. 1	$f/6.3, 8, 11, 16, 22, 32 \text{ \& } 45$
„ 2A	$f/4.5, 5.6, 6.3, 8, 11, 16, 22, 32 \text{ \& } 45$
„ 2B	$f/4.8, 5.6, 6.3, 8, 11, 16, 22, 32 \text{ \& } 45$
„ 3 & 5	$f/6.3, 8, 11, 16, 22, 32 \text{ \& } 45$
„ 4 & 6	$f/6.5, 8, 11, 16, 22, 32 \text{ \& } 45$

All Models, Speed :—

$\frac{1}{2}, \frac{1}{4}, \frac{1}{8}, \frac{1}{16}, \frac{1}{32}, \frac{1}{64}, \frac{1}{100}$ th sec.

so that any combination of *Speed* and *Aperture* can be made with the certainty of the plates receiving exactly *the same amount of Exposure*, and admitting of *Simultaneous Development*, however different the Subjects.

If $\frac{1}{25}$ th or $\frac{1}{50}$ th or $\frac{1}{75}$ th of a second is wanted, reduce or enlarge the aperture of the Iris Diaphragm about a half, by putting the Iris pin half-way between the next lower or higher division marking to the F. number fixed upon ; this gives the practical equivalent light value.

EXAMPLE :—Exposure wanted, $\frac{1}{50}$ of a second at $f/11$. Set speed to $\frac{1}{64}$ th of a second and Iris pin between $f/8$ and $f/11$.

Releasing the Shutter.

The beginner should from the outset learn how to use his Shutter. Always use the Hand Release when working the Camera in the hand. *Do not push* the Release right home with a *sudden jerk*, or you will shake the Camera and spoil the picture. Steady the body well just before exposing. Hold the Camera in both hands, on a level with the eyes. Keep the arms close to the body, steady the first finger of the right hand on the Release, and press gently. The Shutter works without the slightest vibration, so if you keep the Camera still (holding your breath just at the moment of exposure) no picture will ever be lost through moving the Camera. Remember that the "Sibyl" Shutter *regulates its own speed*; one should press as slowly and lightly for the $\frac{1}{2}$ second as for the $\frac{1}{100}$ th.

For Tripod work always use the Antinous Release.

Interiors.

For photographing Interiors, and all subjects with strong lights and deep shadows, use *Backed Plates*. With a "Sibyl" Camera and Backed Plates, the most brilliant light—even the sun itself—may be included in a picture without fear of flare, inhalation or fog.

INSTRUCTIONS - -
FOR WORKING
THE "SIBYL" - -
POCKET CAMERAS.



Do not touch any part
of the Camera till after
carefully reading these
Instructions. - - - -

SHORT INSTRUCTIONS.

The "Sibyl" is exceedingly simple to work. The following ten points show the the whole process of taking an instantaneous picture. Some of these movements are only required occasionally, and all become quite automatic after a little practice.

1. Open the Camera.
2. Raise Viewfinder in position.
3. Set the Iris Diaphragm.
4. Adjust the Focussing Scale.
5. Adjust Speed Index of Shutter.
6. Set the Shutter.
7. Withdraw the Shutter of Dark Slide.
8. Release the Shutter.
9. Replace the Shutter of Dark Slide.
10. Fold the Camera.

Only 6, 7, 8 and 9 must be done every time—the others when required.

COMPLETE INSTRUCTIONS.

As will be seen by the following, there is nothing new in working the "Sibyl" to anyone who has used a Camera before,

while even absolute beginners master all the necessary movements the first time they follow these instructions with the "Sibyl" in the hand.

Special Instructions for using the "Sibyl," with extra Fittings or Adjustments will be found in later pages.

To Open the Instrument.

Hold the Camera in the left hand, with the first finger on the small knob at the top. Press gently, and incline the Camera downward; open the Base into position. The Camera front will now swing forward, and may be fixed by pulling until set perfectly rigid by spring catch.

To Close the Instrument.

Press the spring catch, which will be found at the bottom of the Shutter, in the centre, or in Model No. 1 press the two catches together. Allow the front to fall into "closed position," raise Base, and close by pressure only.

NOTE.—*The Direct-vision Finder must be closed down into position first.*

To Adjust the Focussing Scale.

The Focussing Scale is tested and engraved for distances of 2, 3, 4, 6, 8, 12 and 20 yards, and "infinity."

The Indicator is situated at the Base, under Shutter; move from right to left, according to requirements.

For all General Views, Landscapes, Street Scenes, &c., place the Focussing Scale at the line engraved "12" yards. For near objects estimate the distance in yards, and set the Scale to the corresponding figure. (But read paragraph on "Focussing," page 11.)

To Adjust the Speed Index of Shutter.

Move the Curved Pointer along the Scale in front of the Shutter, to the desired Speed.

The Scale is measured and engraved for Automatic Exposures of $\frac{1}{2}$, $\frac{1}{4}$, $\frac{1}{8}$, $\frac{1}{16}$, $\frac{1}{32}$, $\frac{1}{64}$, and $\frac{1}{100}$ th second. Give always the longest exposure that the movement of the object photographed will allow.

To Set the Shutter.

Move the Indicator of the Setting Lens from O to + or *vice versa*. By looking into the Lens, (or on the front of the Shutter of Model No. 1, see Special Indicator), it is possible to see immediately if the Shutter is set, *i.e.*, the O or + must correspond to the mark facing the point of the Indicator.

NOTE.—*The Shutter may be set even when the Slide of Changing Box or Dark Slide is withdrawn, as the Shutter blades do not open while the Shutter is being set.*

To Make a Time Exposure.

Set the Shutter and place the Speed Indicator at $\frac{1}{2}$ -second, give one light touch to the Release and let go. This will leave the Shutter open, another pressure will then close the Shutter and complete the Exposure.

To Use the Rising Front.

Place second finger at top of Camera Front beside Finder, press thumb under the Lens (or in Model No. 1 Special Knob is

provided) and push upwards. To lower, second finger should be placed on top of Shutter, and thumb under Baseboard.

NOTE. — *The Rising Front must be lowered to original position before closing the Camera.*

To Release the Shutter.

Gently press the Release (next to N. and G. on front).



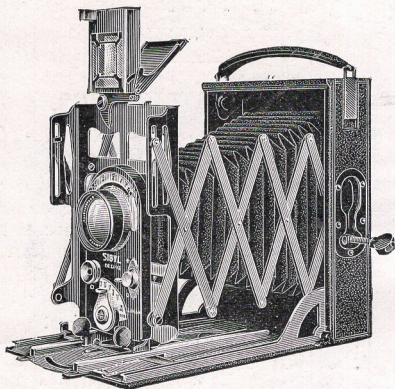
Special Instructions for Working The "Sibyl" De Luxe Model No. 1.

SHORT INSTRUCTIONS.

The "Sibyl" Model No. 1 is as simple to work as all the other Models. The following ten points show the whole process of taking an instantaneous picture. Some of these movements are only required occasionally, and all become quite automatic after a little practice.

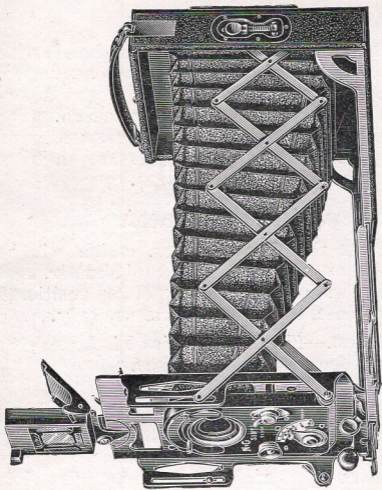
1. Open the Camera.
2. Raise View Finder in position.
3. Set the Iris Diaphragm.
4. Adjust the Focussing Scale.
5. Adjust Speed Index of Shutter.
6. Set the Shutter.
7. Withdraw the Shutter of Dark Slide.
8. Release the Shutter.
9. Replace the Shutter of Dark Slide.
10. Fold the Camera.

Only 6, 7, 8 and 9 must be done every time—the others when required.



CAMERA OPEN AND TRIPOD SCREW
IN POSITION.





CAMERA SHOWING DOUBLE EXTENSION AND RISING FRONT.

COMPLETE INSTRUCTIONS.

To Open the Instrument.

Hold the Camera in the left hand, with the first finger on the small knob at the top. Press gently, and incline the Camera downward; open the Base into position. The Camera front will now swing forward, and may be fixed by slight pressure on front catches, pulling into position.

To Close the Instrument.

Press the front catches, which will be found at the bottom of the Shutter, and press the front back into "closed position," raise Base, and close by pressure only.

NOTE.—*The Direct-vision Finder must be closed down into position first.*

To Use the Double Extension.

Hold the Camera in the left hand and by slight pressure on the catches bring the Camera front right forward into the slots marked S. Then with the thumb and first finger of the right hand, pull the Baseboard outwards by the knob (on right hand side of the front of the Baseboard) until the

Baseboard catches into position. Remove the front combination of the Lens by one half turn of the bayonet fitting.

NOTE.—*The Plate or Film register must be corrected according to requirements. See page 27 "To alter for use from Film Pack, &c."*

To Adjust the Focussing Scale.

The Focussing Scale is tested and engraved for distances of 2, 3, 4, 6, 8, 12 and 20 yards, and "Infinity." The Indicator is situated at the base, under Shutter; move the lever on the side according to requirements.

To Adjust the Speed Index of Shutter.

Move the Curved Pointer forward along the Scale in front of the Shutter to the desired Speed. The Scale is measured and engraved for Automatic Exposures of $\frac{1}{2}$, $\frac{1}{4}$, $\frac{1}{8}$, $\frac{1}{16}$, $\frac{1}{32}$, $\frac{1}{64}$, $\frac{1}{100}$ th second. Give always the *longest* exposure that the movement of the object photographed will allow.

To Set the Shutter.

Move the Indicator of the Setting Lens from 0 to + or *vice versa*. By looking

at the Indicator it is possible to see immediately if the Shutter is set, *i.e.*, the O or + must correspond to the mark facing the pointer.

NOTE. — *The Shutter may be set even when the Slide of Changing Box or Dark Slide is withdrawn, as the Shutter blades do not open while the Shutter is being set.*

To Make a Time Exposure.

Set the Shutter and place the Speed Indicator at $\frac{1}{2}$ -second, give one light touch to the Release and let go. This will leave the Shutter open, another pressure will then close the Shutter and complete the Exposure.

To Use the Rising Front.

Place second finger at top of Camera Front beside Finder, press thumb under the knob provided on the top left-hand side of the Camera Front and push upwards. To lower, second finger should be placed on top of Shutter, and thumb under Baseboard.

NOTE. — *The Rising Front must be lowered to original position before closing the Camera.*

To Alter for Use from Film Pack Adapter Changing Box to Dark Slides.

On each side of the centre runners of the Baseboard a small spring is fitted, which is pressed outwards and then simply pushed along into position required either for F. (films) or P. (plates).

To Release the Shutter.

Gently press the Release (next to "N. & G." on front).



ADDITIONAL INSTRUCTIONS.

To Alter Focussing Scale of "Sibyl" Cameras, Models 2, 3, 4, 5 & 6, for use with Dark Slides or Film Pack Adapter, &c.

On Baseboard of Camera, towards the back, will be found a Spring Lever with Slots engraved "1" and "2."

Slot "1" is for use with the Single Metal Dark Slides usually supplied with the "Sibyl" Camera.

Slot "2" is for use with a Film Pack Adapter, &c.

To Alter for use from Dark Slides to Film Pack Adapter or Changing Box.

Lower Base, and without allowing Front to fall forward.

Set Focussing Lever to 20 yards.

Pull back Spring Lever, and while same is held, set Focussing Lever to 2 yards; then release Spring Lever.

Focussing Scale will then be adjusted to position "2," *i.e.*: — For Film Pack Adapter, &c.

To Alter for use from Film Pack Adapter or Changing Box to Dark Slides.

Lower Base, and without allowing Front to fall forward.

Set Focussing Lever to 2 yards.

Pull back Spring Lever, and while same is held, set Focussing Lever to 20 yards; then release Spring Lever.

Focussing Scale will then be adjusted to position "1," *i.e.* :—For Dark Slides.

For altering Focussing Scale of Model No. 1 for use with Dark Slides or Film Pack Adapter, &c., see Special Instructions.

To attach Film Pack Adapter to "Sibyl" Camera.

When Film Pack Adapter is to be used the Clip for Dark Slides should be closed down.

Place Adapter in position, at back of Camera, so that the two Catches on right-hand side of the Camera fit into two Slots cut in Adapter.

Press the opposite side of Adapter well down into position and slide the Spring Catch on Adapter along (towards the top of Camera) until it clips into position.

To Detach Film Pack Adapter from Camera.

Raise Spring Catch of Adapter at the small end, and while same is held, slide Spring Catch along (towards bottom of Camera) as far as it will go.

Film Pack Adapter is then easily detached.



PRICES OF "SIBYL" ACCESSORIES, &c.

	3½ × 2½ Plate			¼-Plate		
	£	s.	d.	£	s.	d.
Extra Leather Case, containing 6 Dark Slides, Nos. 7-12 ...	0	11	6	0	15	0
"Sibyl" Changing Box, Form I., for 8 Plates or 8 Films; or Form II., for 12 Cut Films ...	2	5	0	2	5	0
"Sibyl" Changing Box, Form I., for 12 Plates or 12 Films; or Form II., for 18 Cut Films ...	2	7	6	2	7	6
Special "Sibyl" Film Pack Adapter	1	10	0	1	15	0
Extra Dark Slides each	0	1	6	0	1	6
Leather Case (only), for 6 Slides	0	2	9	0	6	0
Focussing Screens, complete with Hoods	0	3	6	0	4	6

	3½ × 2½ Plate			¼-Plate		
	£	s.	d.	£	s.	d.
Focussing Screens, without Hoods	0	1	6	0	1	6
Focussing Screens, for use with Film Pack Adapter	0	4	6	0	4	6
"N. & G." Light Filter, complete in Holder, with Pocket Case	0	10	6	0	10	6
Ground Glass (real image), View Finder, complete with Levels	0	15	0	0	15	0
Antinous Release for Shutter ...	0	7	6	0	7	6
Tripod Board, complete with Screw for Tripod Work ...	0	10	6	0	10	6
"N. & G." Eiffel Stand, No. 2A Stand, size, closed, 30¾ × 1½ × 1¼ in.	1	8	6	1	8	6
"N. & G." Eiffel Stand, No. 2B Stand, size, closed, 30¾ × 2 × 1¾ in.	1	13	6	1	13	6
"N. & G." Aluminium Stand, in Leather Case	1	10	0	1	10	0
"N. & G." Plates ... per doz.	0	1	0	0	1	6
"N. & G." Plates, Backed ,,	0	1	3	0	1	9
"N. & G." H.S. Plates ,,	0	1	0	0	1	6
	To order only					
Ditto Backed ,,	0	1	3	0	1	9
"N. & G." S.R. Plates ,,	0	0	9	0	1	0
	To order only					
Ditto Backed ,,	0	1	0	0	1	3
"N. & G." Ortho Plates ,,	Not stocked			0	1	0
Ditto Backed ,,				0	1	3
Rack and Tank Washer	0	2	6	0	2	6
Xylonite Trays	0	0	4	0	0	5
" " Transparent	Not stocked			0	0	11
" " with Lifter				0	0	9
Printing out Paper, Ilford, per packet, 24 pieces	0	0	5	—		
Printing out Paper, Ilford and all makes, 36 pieces	—			0	1	0

	$\frac{1}{2} \times \frac{1}{2}$ Plate.	$\frac{1}{4}$ -Plate.
	£ s. d.	£ s. d.
Printing Frames	0 0 9	0 1 6
"Standa" Daylight Developing Tanks (for development with- out a Dark Room), "B" quality	0 10 0	0 12 6
Film Packs, Kodak N. C. Film, 12 exp	0 1 8	0 3 0
Junior Adon Telephoto Attach- ment, including fitting ...	3 0 0	3 0 0
	To	To
The New Folding "N. and G." Enlarger, "Sibyl" $\frac{1}{4}$ -plate ...	$\frac{1}{2}$ -Plate 3 15 0	1/1 Plate 4 5 0
The New Folding "N. & G." Enlarger, $3\frac{1}{2} \times 2\frac{1}{2}$	3 5 0	3 17 6

THE "N. & G." CAMERAS are well known as high-class instruments, absolutely reliable, and capable of the finest work—whether artistic, scientific or general. They take any kind of Sensitive Material, and are as efficient and easy to use on a tripod as in the hand; and being, also, readily adapted for Wide-Angle, Telephoto-graphic, and High-Speed Work, they are UNIVERSAL INSTRUMENTS which meet every requirement of photographers desiring to obtain perfect negatives under all sorts of conditions.

Telegraphic Address:
"Goniometer, London."

NEWMAN & GUARDIA, Ltd.,

**17 & 18, Rathbone Place,
Oxford Street, London, W.**

Telephone:
3525 Central